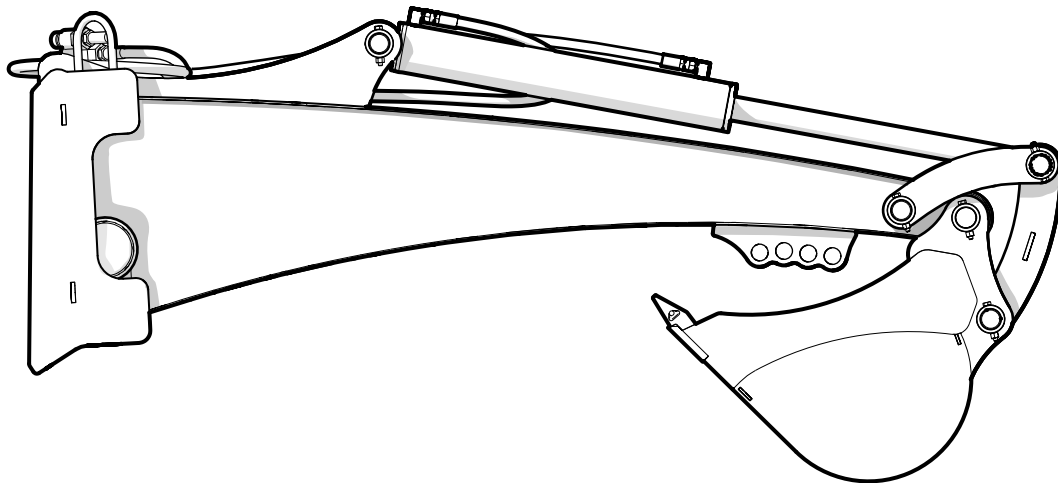


PARTS MANUAL

Serial Number 3620Q446 & up

QC620 SKID STEER BACK HOE



Foreword

This Wallenstein parts manual is prepared to assist customers in ordering quality OEM replacement parts.

Regular maintenance combined with replacing old, worn or broken parts with the correct OEM parts is essential in prolonging the life of your Wallenstein product. Refer to this manual to identify replacement parts.

To order parts, contact your Wallenstein dealer or distributor. Have the product model and serial number handy.

If your dealer is no longer available, please go to our website: <http://wallensteinequipment.com> and click on the [Dealer Locator](#) to find the nearest dealer.

All information contained in this parts manual is current as per the revision date at the bottom of the page. Wallenstein reserves the right to change product specifications at any time without notice.

If your product specifications differ from those contained in this manual, contact Wallenstein for current information.

Reproduction of information in this parts manual is prohibited without prior written permission from Wallenstein Equipment Inc.

Wallenstein Equipment Inc. • © 2019

WARNING!

Refer to the operators manual for safe operation and maintenance.

Maintenance should be performed by trained personnel only.

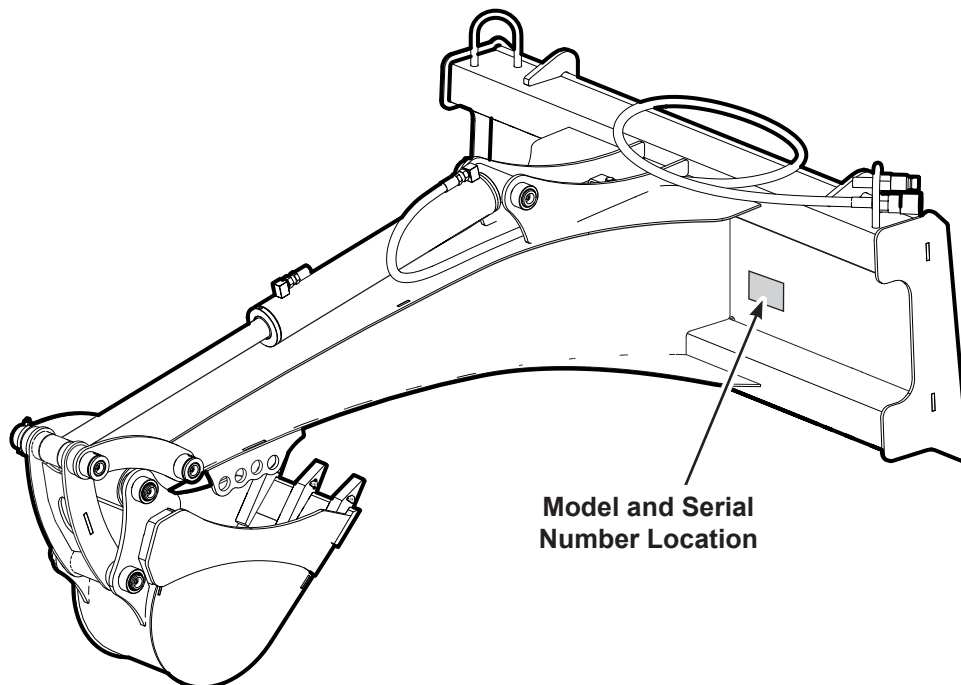
Serial Number Location

Always provide the model and serial number of your Wallenstein product when ordering parts or requesting service or other information. This information is found on the product information plate as shown below.

Record your product information here for future reference.

Model _____

Serial Number _____



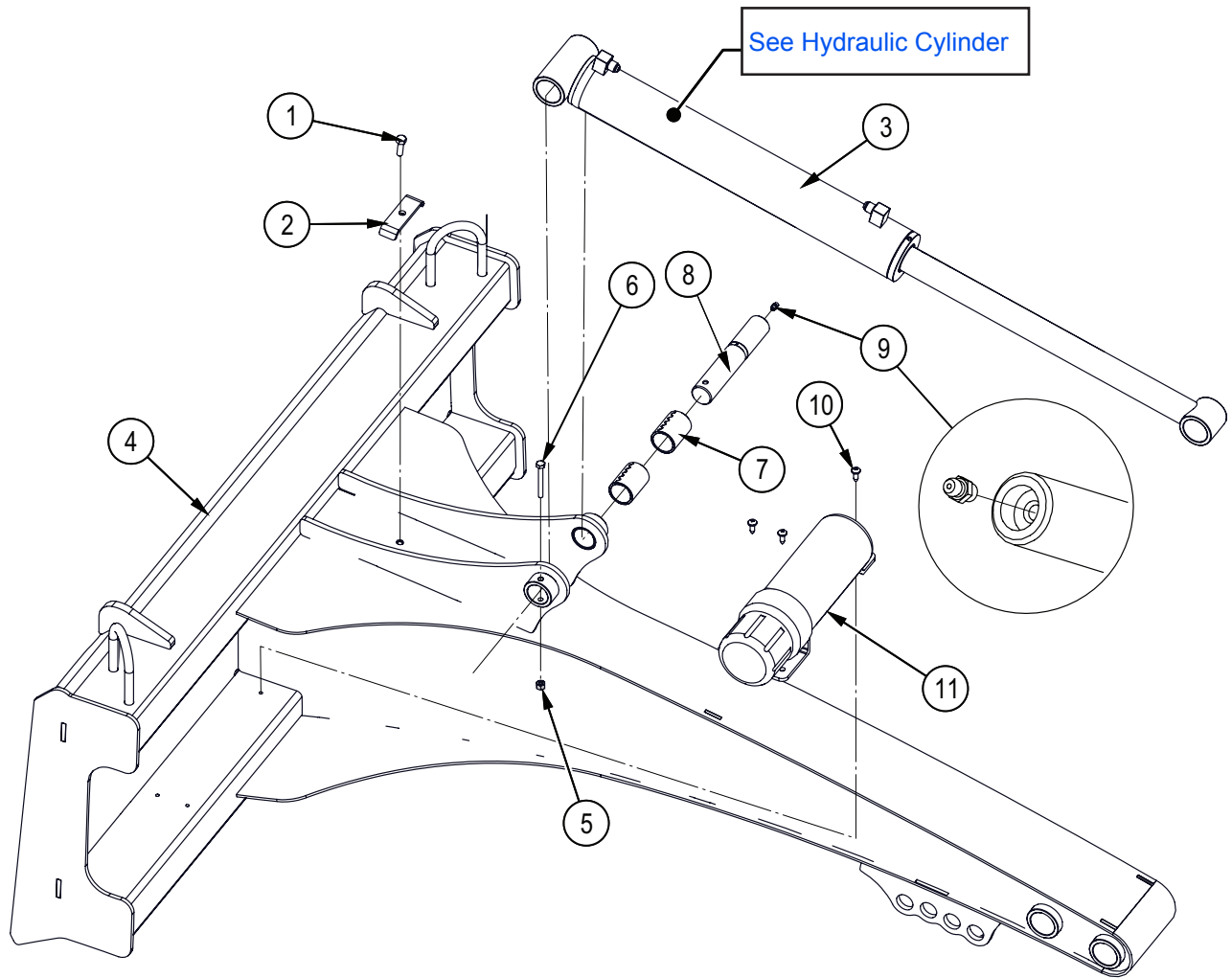
Model and Serial
Number Location

www.wallensteinequipment.com

Contents

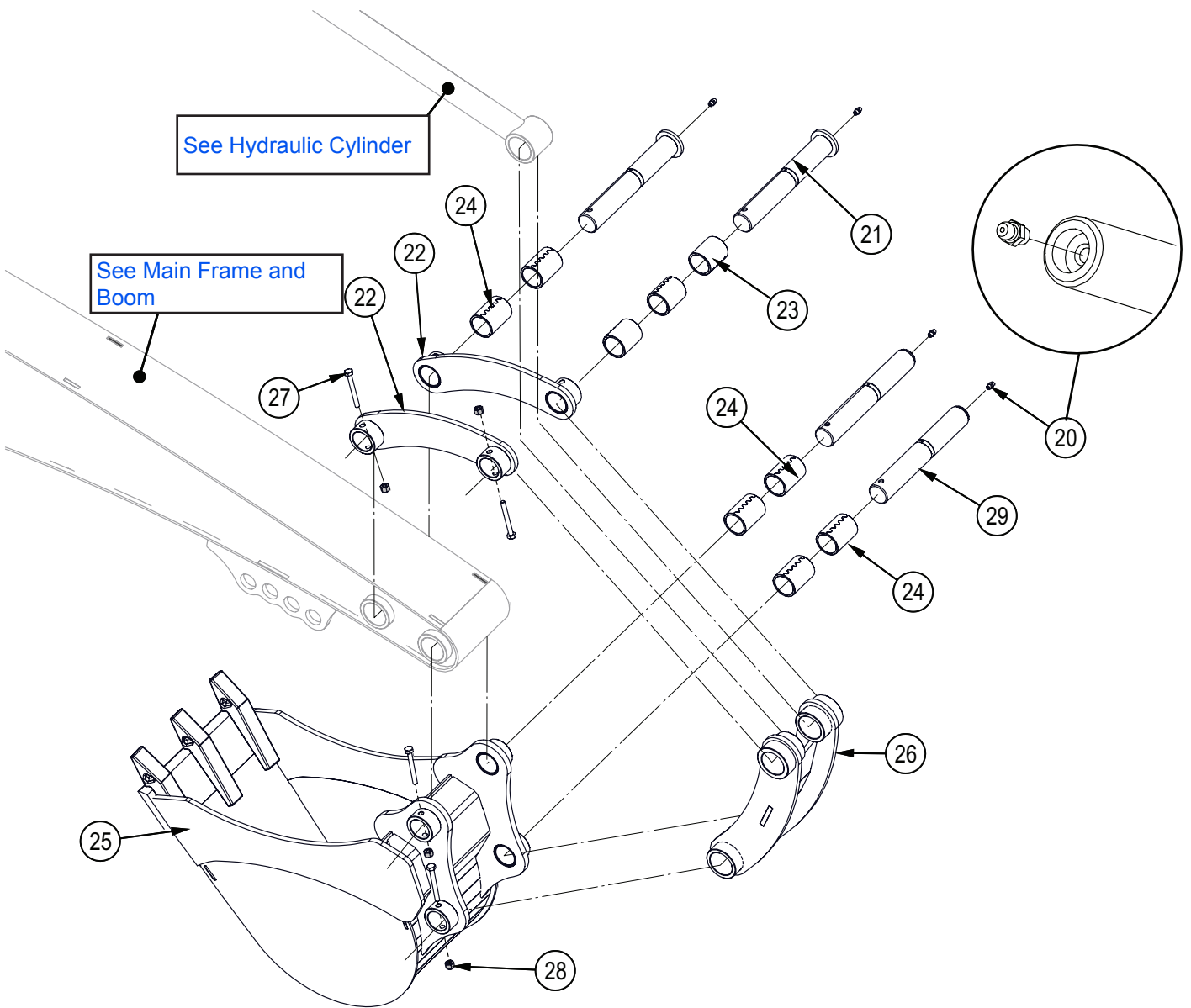
Main Frame and Boom	4
Bucket and Linkage Assembly	5
Cylinder Detail	6
Hydraulic Circuit	7
Decal Layout.....	8
Accessories	9
Common Bolt Torque Values	10
Hydraulic Fitting Torque Values	11

Main Frame and Boom



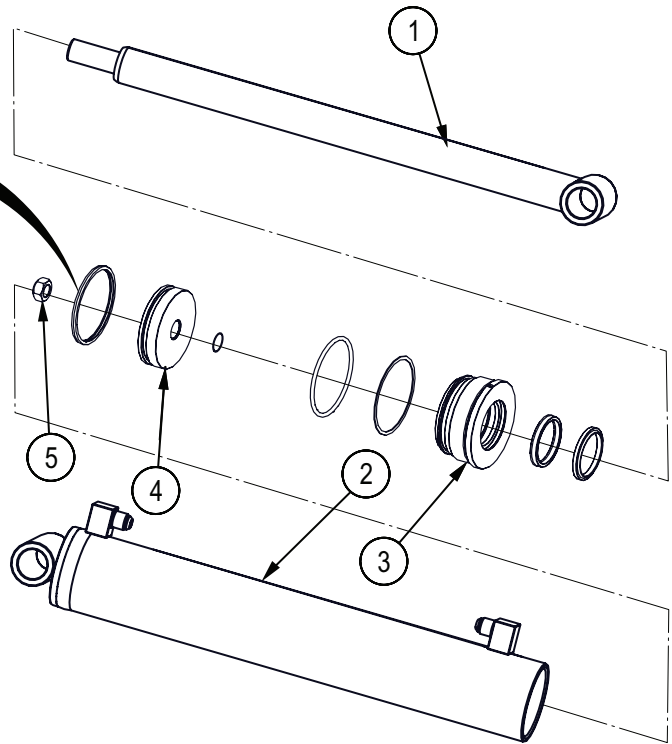
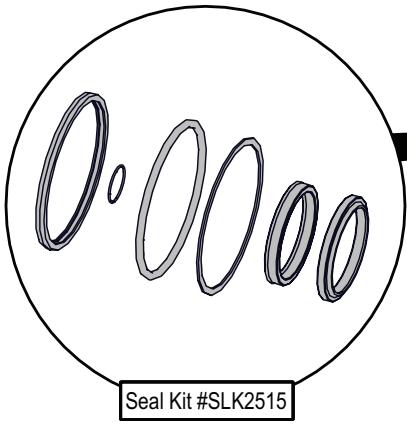
Item No.	Part No.	Description	Qty
1	Z71210	Hex Bolt, 5/16NC x 1"	1
2	3011L176	Clamp, Two Hose	1
3	3012C207	Cylinder, 2-1/2x14-3/4 Stroke	1
4	3033W200	Main Frame & Boom	1
5	Z72211	Hex Lock Nut, 1/4NC	1
6	Z71122	Hex Bolt, 1/4NC x 2-1/4"	1
7	Z27232	Connex Bushing, 1-1/4" ID x 2" Long x 1/8" Wall	2
8	3012M210	Pin, Linkage 1-1/4 x 7	1
9	Z29202	Grease Fitting, 1/4NF	1
10	Z76721	Self-tapping Screw, 1/4" x 3/4"	3
11	Z96503	Manual Tube, 3-1/2" Short	1

Bucket and Linkage Assembly



Item No.	Part No.	Description	Qty
20	Z29202	Grease Fitting, 1/4NF	4
21	3012W217	Bucket Pin w/ Washer	2
22	3012W202	RH Bucket Linkage	2
23	Z27231	Connex Bushing, 1-1/4" ID x 1-3/4" Long x 1/8" Wall	3
24	Z27232	Connex Bushing, 1-1/4" ID x 2" Long x 1/8" Wall	6
25	3082W041	GX720 9" Backhoe Bucket	1
26	3012W203	Middle Bucket Linkage	1
27	Z71122	Hex Bolt, 1/4NC x 2-1/4"	4
28	Z72211	Hex Lock Nut, 1/4NC	4
29	3012M209	Pin, Linkage 1-1/4 x 8-3/8	2

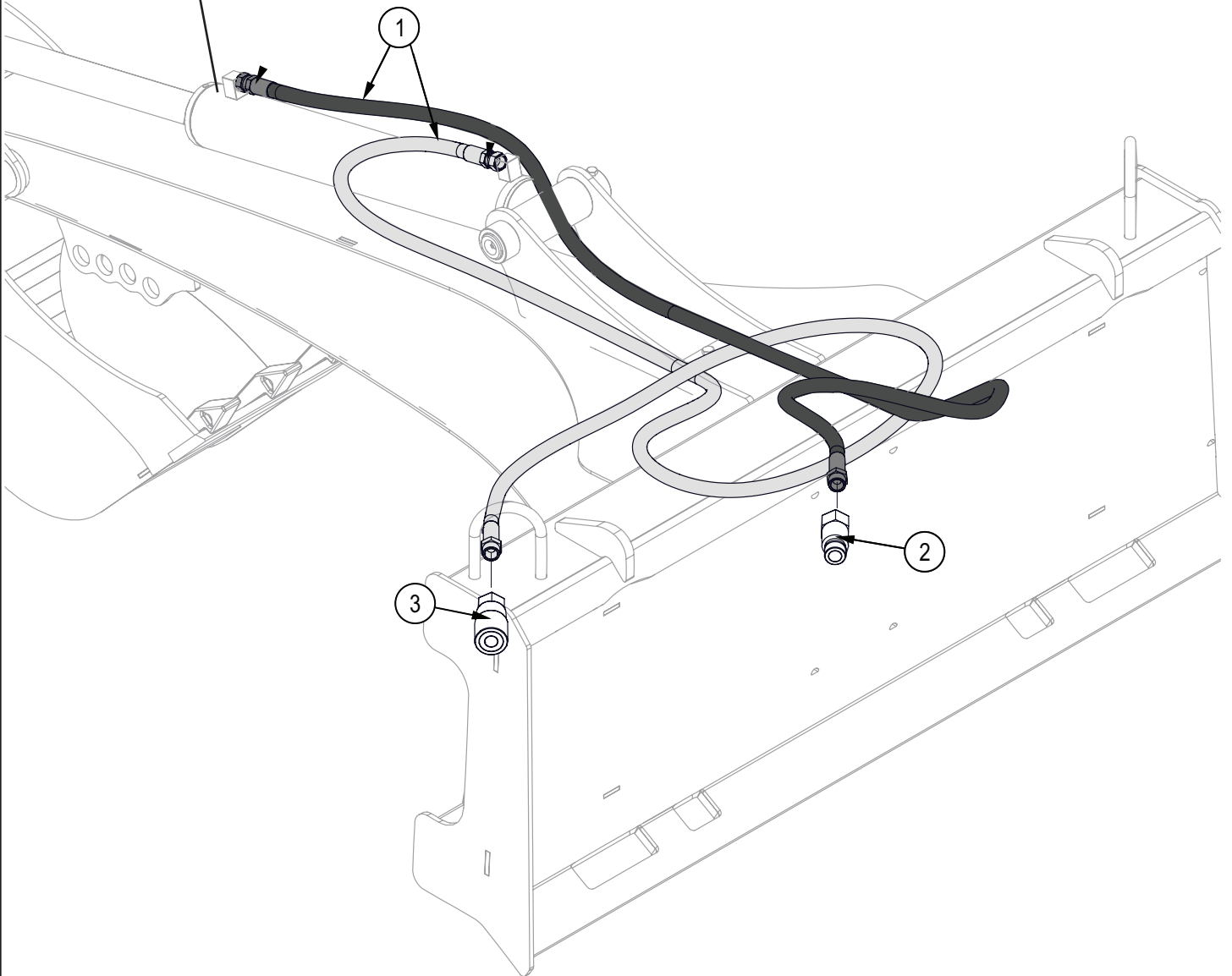
Cylinder Detail



Item No.	Part No.	Description	Qty
1	3012C2073	Rod, 1-1/2 x 1	1
2	3012C2074	Barrel, 2-1/2" Bore	1
3	G250-150S	Gland, 2-1/2" x 1-1/2"	1
4	P100-250SP	Piston, 2-1/2" Bore	1
5	Z72276	Hex Lock Nut, 3/4NF	1

Hydraulic Circuit

See Hydraulic Cylinder

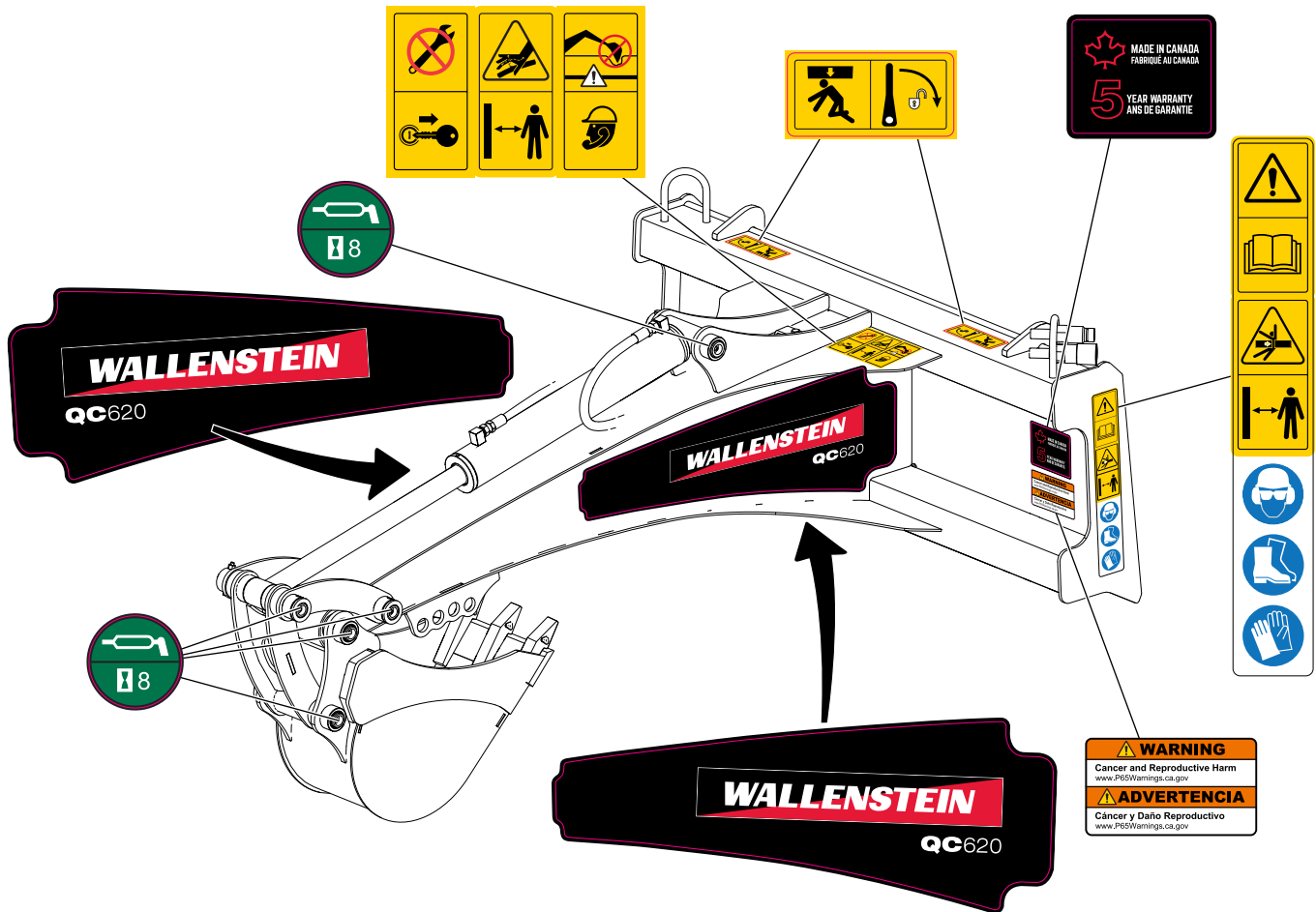


Item No.	Part No.	Description	Qty
1	Z52231	3/8" Hose, FJIC06 x MP08 x 94"	2
2	Z51919	Flat-Face Coupler, FP08 x M ISO 16028	1
3	Z51920	Flat-Face Coupler, FP08 x F ISO 16028	1

Decal Layout

IMPORTANT! If parts are replaced that have safety signs on them, new signs must be applied. Safety signs must always be replaced if they become damaged, are removed, or become illegible.

Safety signs are included in the product decal kit available from your authorized dealer. Decals are not available separately.



Accessories

PT300 3 Point Hitch
• Category I
BK2900 9" Bucket
• 3 teeth
• Bucket Volume: 0.8 ft ³
BK2120 12" Bucket
• 3 teeth
• Bucket Volume: 1.2 ft ³
BK2150 15" Bucket
• 4 teeth
• Bucket Volume: 1.5 ft ³
BK2180 18" Bucket
• 4 teeth
• Bucket Volume: 1.8 ft ³
BK2240 24" Bucket
• 5 teeth
• Bucket Volume: 2.4 ft ³
BK2240D 24" Ditching Bucket
• No teeth
• Bucket Volume: 2.4 ft ³
BT5310 Clamp on mechanical thumb
Using the mechanical thumb allows better control of material that is difficult to scoop or place with precision.


Common Bolt Torque Values

Checking Bolt Torque

The tables shown give correct torque values for various bolts and capscrews. Tighten all bolts to the torque values specified in the table, unless indicated otherwise. Check tightness of bolts periodically.

IMPORTANT! If replacing hardware, use fasteners of the same grade.

IMPORTANT! Torque figures indicated in the table are for non-greased or non-oiled threads. Do not grease or oil threads unless indicated otherwise. When using a thread locker, increase torque values by 5%.

 **NOTE:** Bolt grades are identified by their head markings.

Imperial Bolt Torque Specifications

Bolt Diameter	Torque Value					
	SAE Gr. 2		SAE Gr. 5		SAE Gr. 8	
	lbf•ft	N•m	lbf•ft	N•m	lbf•ft	N•m
1/4"	6	8	9	12	12	17
5/16"	10	13	19	25	27	36
3/8"	20	27	33	45	45	63
7/16"	30	41	53	72	75	100
1/2"	45	61	80	110	115	155
9/16"	60	95	115	155	165	220
5/8"	95	128	160	215	220	305
3/4"	165	225	290	390	400	540
7/8"	170	230	420	570	650	880
1"	225	345	630	850	970	1320



SAE Gr. 2



SAE Gr. 5



SAE Gr. 8

Metric Bolt Torque Specifications

Bolt Diameter	Torque Value			
	Gr. 8.8		Gr. 10.9	
	lbf•ft	N•m	lbf•ft	N•m
M3	0.4	0.5	1.3	1.8
M4	2.2	3	3.3	4.5
M6	7	10	11	15
M8	18	25	26	35
M10	37	50	52	70
M12	66	90	92	125
M16	166	225	229	310
M20	321	435	450	610
M30	1,103	1 495	1,550	2 100
M36	1,917	2 600	2,700	3 675



8.8



10.9

Hydraulic Fitting Torque Values

Tightening Flare Type Tube Fittings

1. Check flare and flare seat for defects that might cause leakage.
2. Align tube with fitting before tightening.
3. Hand-tighten swivel nut until snug.
4. To prevent twisting the tube, use two wrenches. Place one wrench on the connector body and tighten the swivel nut with the second. Torque to values shown.

If a torque wrench is not available, use the FFFT (Flats From Finger Tight) method.

Hydraulic Fitting Torque					
Tube Size OD	Hex Size Across Flats	Torque value		Flats From Finger Tight	
		lbf·ft	N·m	Flats	Turns
3/16	7/16	6	8	2	1/6
1/4	9/16	11–12	15–17	2	1/6
5/16	5/8	14–16	19–22	2	1/6
3/8	11/16	20–22	27–30	1-1/4	1/6
1/2	7/8	44–48	59–65	1	1/6
5/8	1	50–58	68–79	1	1/6
3/4	1-1/4	79–88	107–119	1	1/8
1	1-5/8	117–125	158–170	1	1/8

Values shown are for non-lubricated connections.