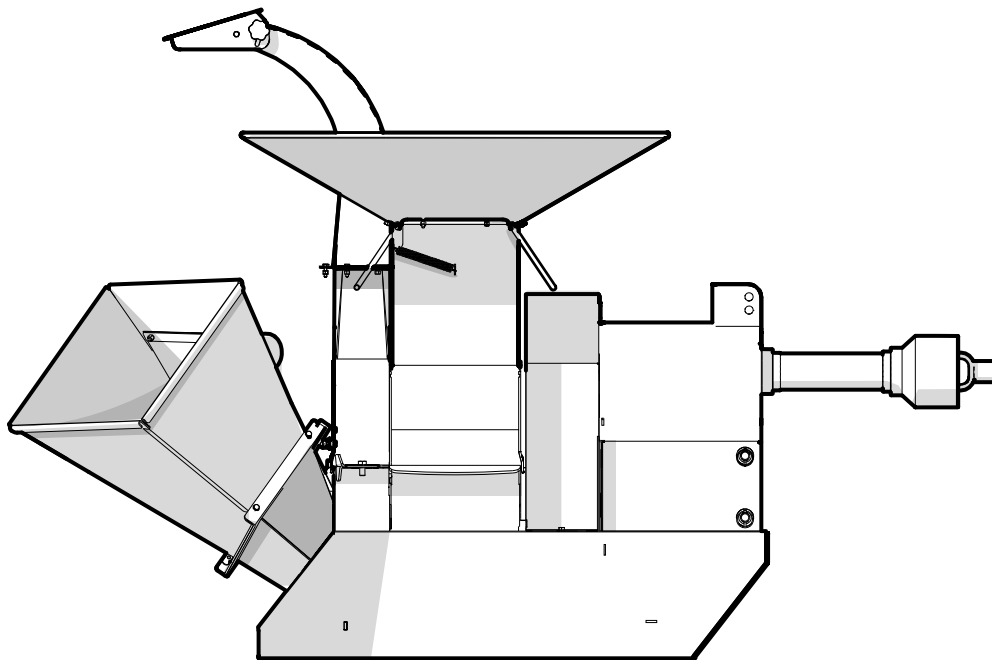


PARTS MANUAL

Serial Number 1M42605 & up

BXM42 3PH Chipper-Shredder



Foreword

This Wallenstein parts manual is prepared to assist customers in ordering quality OEM replacement parts.

Regular maintenance combined with replacing old, worn or broken parts with the correct OEM parts is essential in prolonging the life of your Wallenstein product. Refer to this manual to identify replacement parts.

To order parts, contact your Wallenstein dealer or distributor. Have the product model and serial number handy.

If your dealer is no longer available, please go to WallensteinEquipment.com. At the bottom of the page, select Dealer Locator.

All information contained in this parts manual is current as per the revision date at the bottom of the page. Wallenstein reserves the right to change product specifications at any time without notice.

If your product specifications differ from those contained in this manual, contact Wallenstein for current information.

Reproduction of information in this parts manual is prohibited without prior written permission from Wallenstein Equipment Inc.

Wallenstein Equipment Inc. • © 2023

WARNING!

For safety, operation, and maintenance information, see the Operator's Manual.

Maintenance should be performed by trained personnel only.

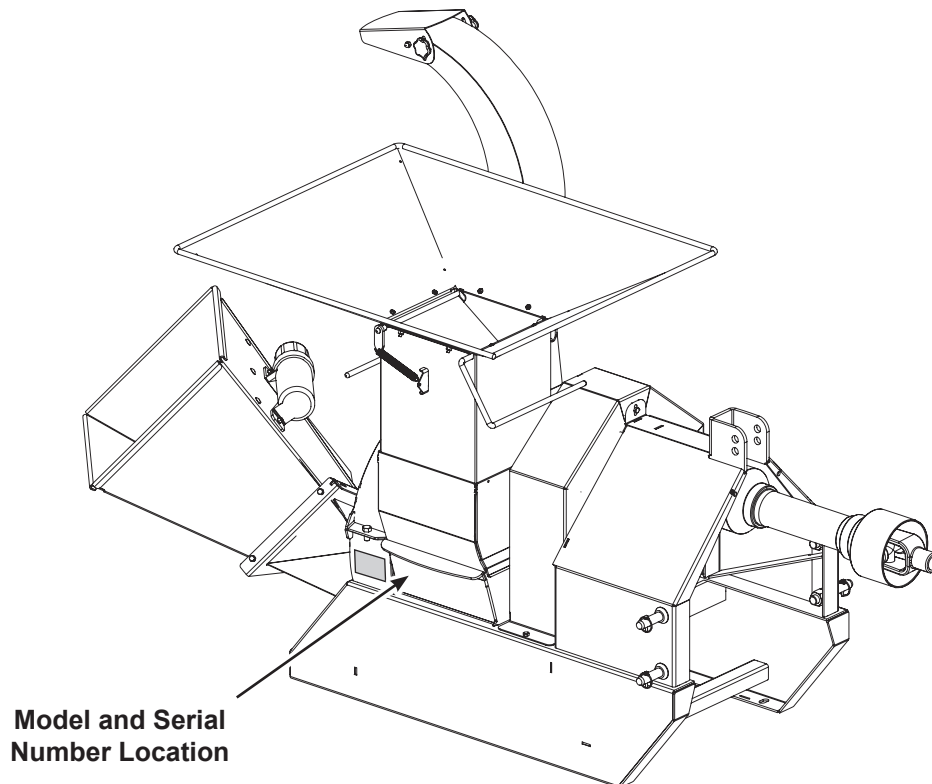
Serial Number Location

Always provide the model and serial number of your Wallenstein product when ordering parts or requesting service or other information. The serial number is on the product information plate as shown below.

Record your product information here for future reference.

Model _____

Serial Number _____



Model and Serial Number Location

Contents

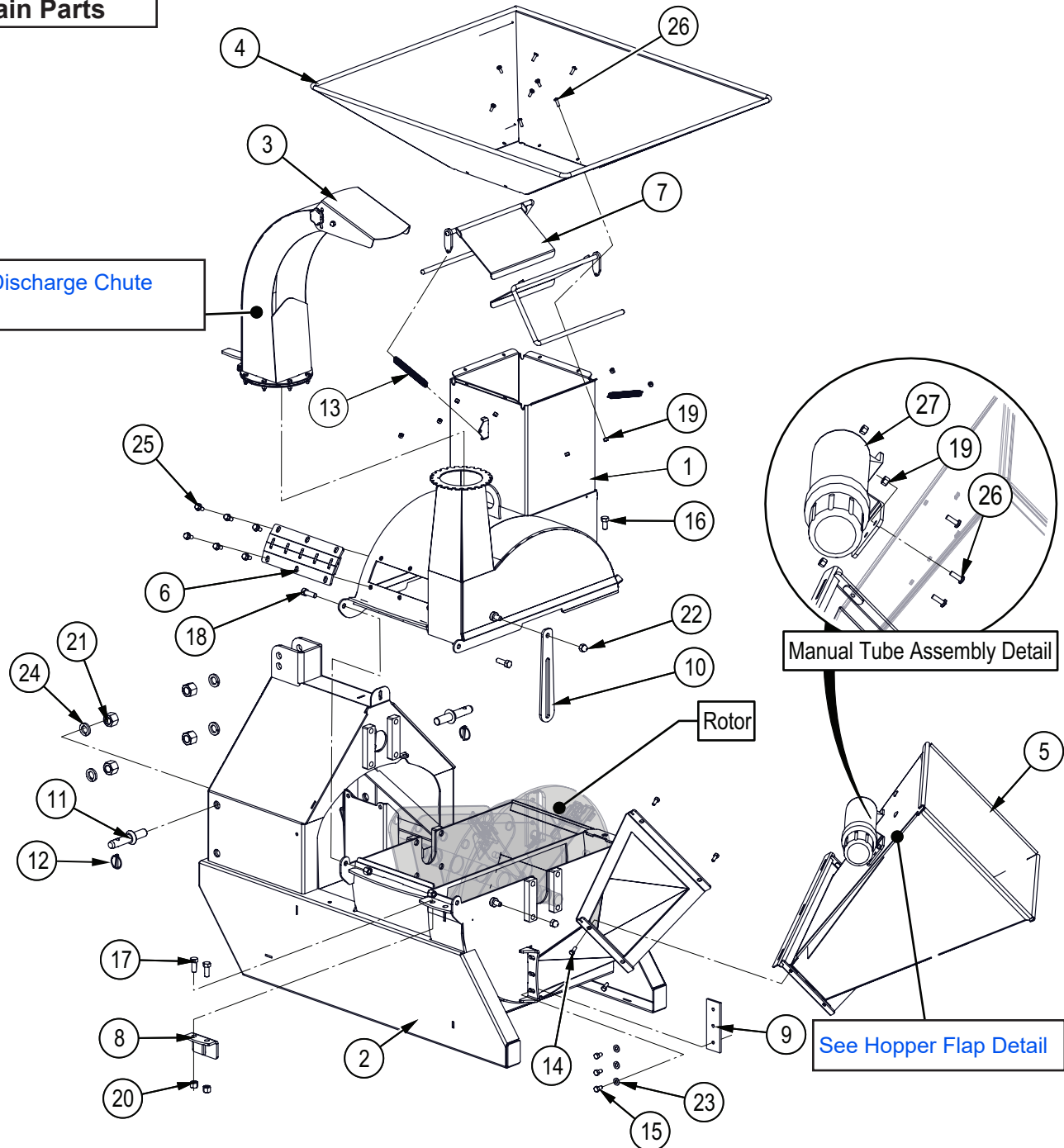
Main Parts	4
Driveline	5
Rotor Detail	6
Discharge Chute Assembly	7
Hopper Flap Detail	8
Decal Layout	9
Accessories	11
Common Bolt Torque Values	12
Hydraulic Fitting Torque Values	13

Main Parts

See Discharge Chute Detail

Manual Tube Assembly Detail

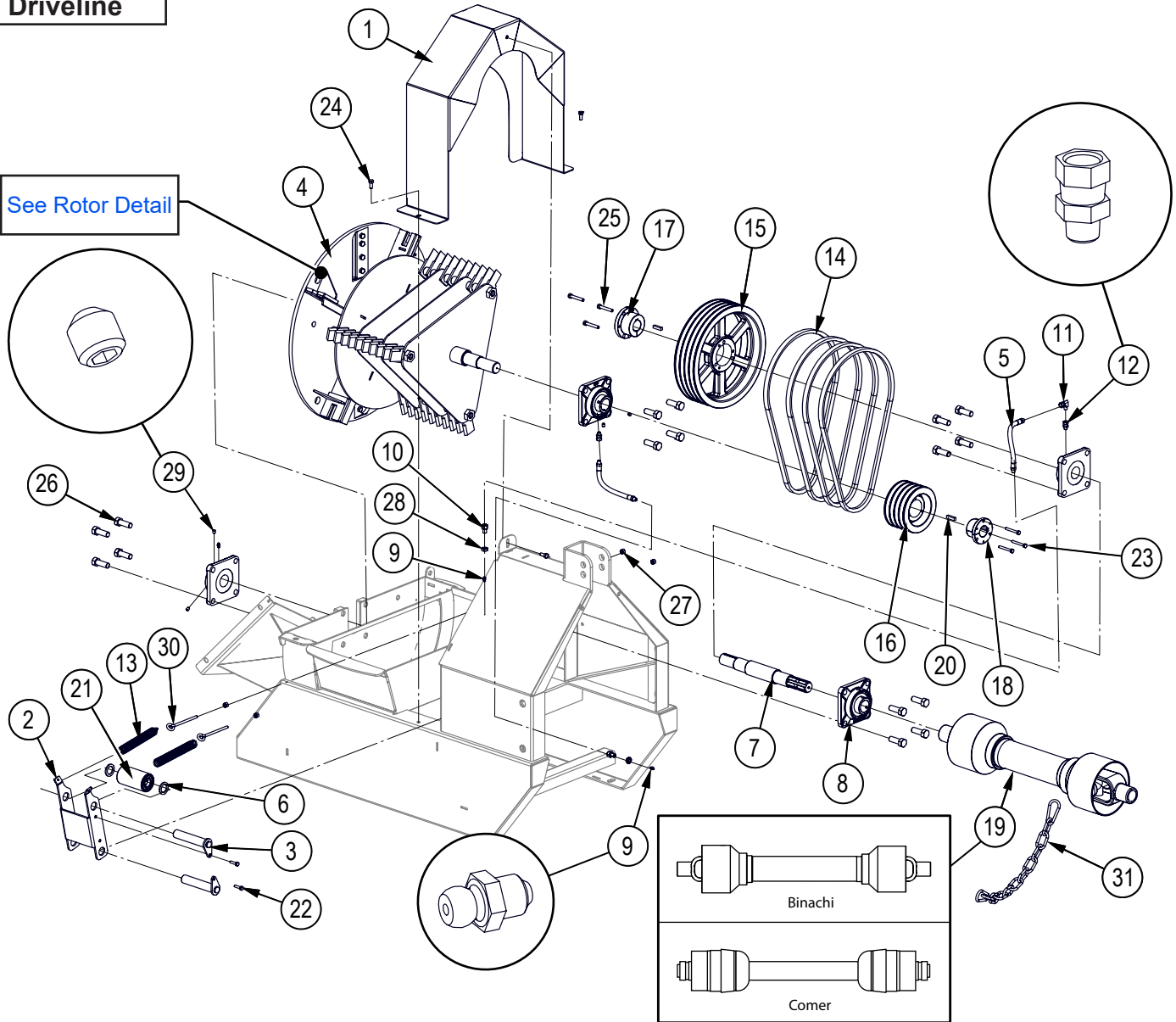
See Hopper Flap Detail



Item No.	Part No.	Description	Qty
1	1016W602	Housing, Upper Rotor	1
2	1016W601	Housing, Bottom Rotor	1
3	1016A005	Assembly, Discharge Chute	1
4	1016W627	Hopper, Shredder	1
5	1016W632	Chipper Feed Hopper	1
6	1016W634	Chop Block	1
7	1016W625	Flapper	2
8	1011W104	Twig Breaker	1
9	1011M104	Knife, 4" Ledger	1
10	1016L729	Positive Stop Plate	1
11	Z11431	Implement Pin, 7/8" x 1-3/4" x 7/8NF	2
12	Z12110	Lynch Pin, 3/16"	4
13	Z31301	Ext Spring, 17mm OD x 140mm x 0.080"	2
14	Z71207	Hex Bolt, 5/16NC x 3/4"	4

Item No.	Part No.	Description	Qty
15	Z71372G8	Hex Bolt, 3/8NF x 5/8" G8	3
16	Z71510	Hex Bolt, 1/2NC x 1"	1
17	Z71512	Hex Bolt, 1/2NC x 1-1/4"	2
18	Z71515	Hex Bolt, 1/2NC x 1-1/2"	2
19	Z72211	Hex Lock Nut, 1/4NC	11
20	Z72251	Hex Lock Nut, 1/2NC	4
21	Z72282	Hex Lock Nut, 7/8NF	4
22	Z72915	Acorn Nut, 1/2NC	2
23	Z73131	SAE Washer, 3/8"	3
24	Z73381	Split Lock Washer, 7/8"	4
25	Z76133	Flange Bolt, 3/8NC x 3/4"	6
26	Z78301	Machine Screw, 1/4NC x 3/4"	11
27	Z96503	Manual Tube, 3-1/2" Short	1

Driveline

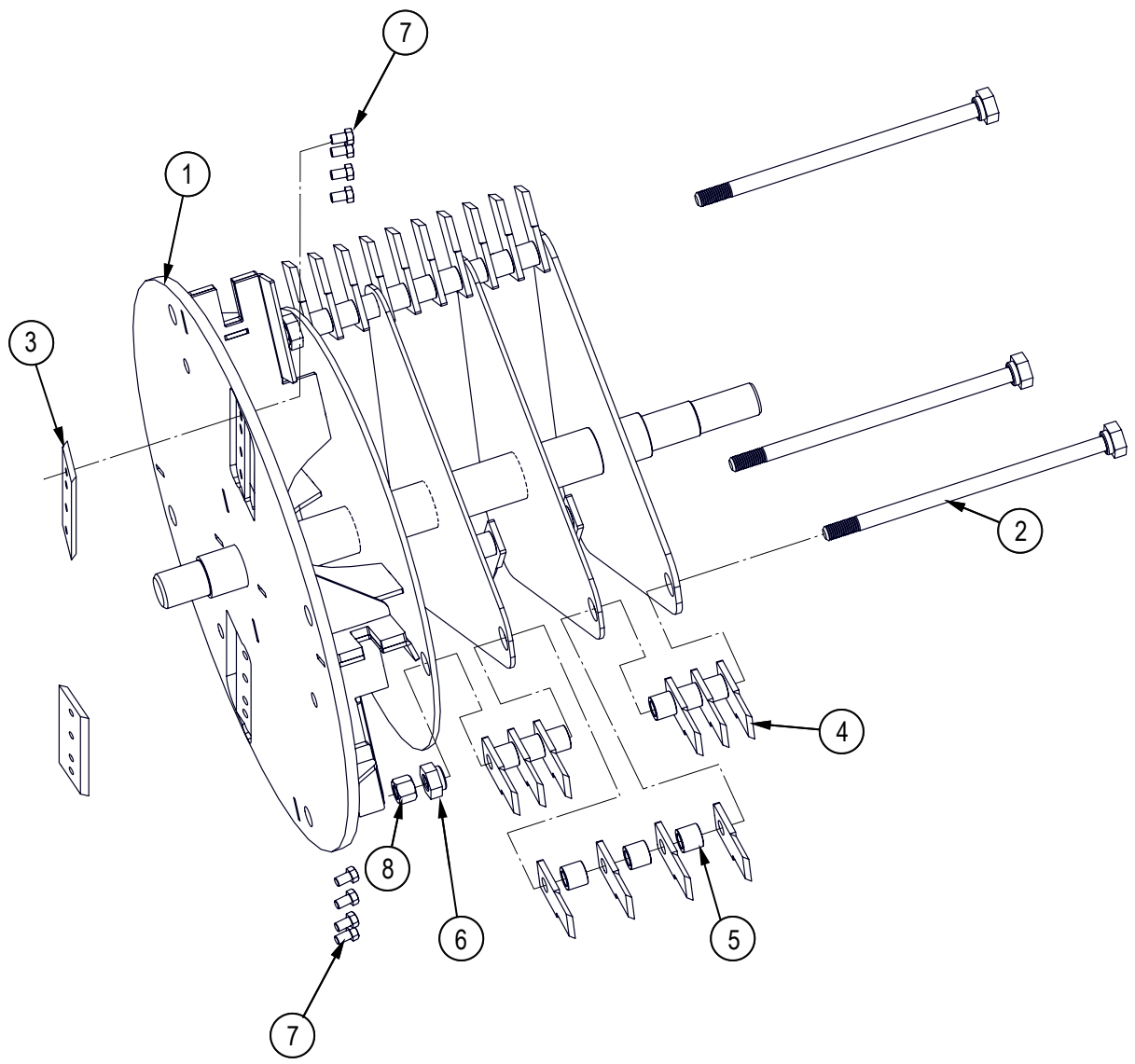


Note: When ordering parts please confirm which brand of PTO shaft is on your machine.
Comer PTO shafts bolt to the back. Binachi PTO shafts have a push connection.

Item No.	Part No.	Description	Qty
1	1016W631	Belt Shield	1
2	1016W633	Idler Arm, Main Belt Tightner	1
3	1016W612	Belt Tightner, Main Pivot Pin	2
4	1016W603	Rotor	1
5	1016F001	1/4" Grease Whip, MP02 x MP02 x 9"	2
6	1016L972	Washer, Idler	2
7	1016M621	Shaft, Splined	1
8	Z25204	4-Bolt Flange Bearing, UCF208-24	4
9	Z29202	Grease Fitting, 1/4NF	3
10	Z29206	Bulkhead, FP x FP 0402 x 7/16NC	2
11	Z29307	Elbow 90 Grease Fitting, MP x FPX 0202	1
12	Z29311	Grease Fitting, MP x FPX 0202	2
13	Z31404	Ext Spring, 25mm OD x 178mm x 0.135"	2
14	Z41158	Single Belt, B50	4
15	Z41311	Sheave, 4B124 x SK	1
16	Z41312	Sheave, 4B54 x SD	1

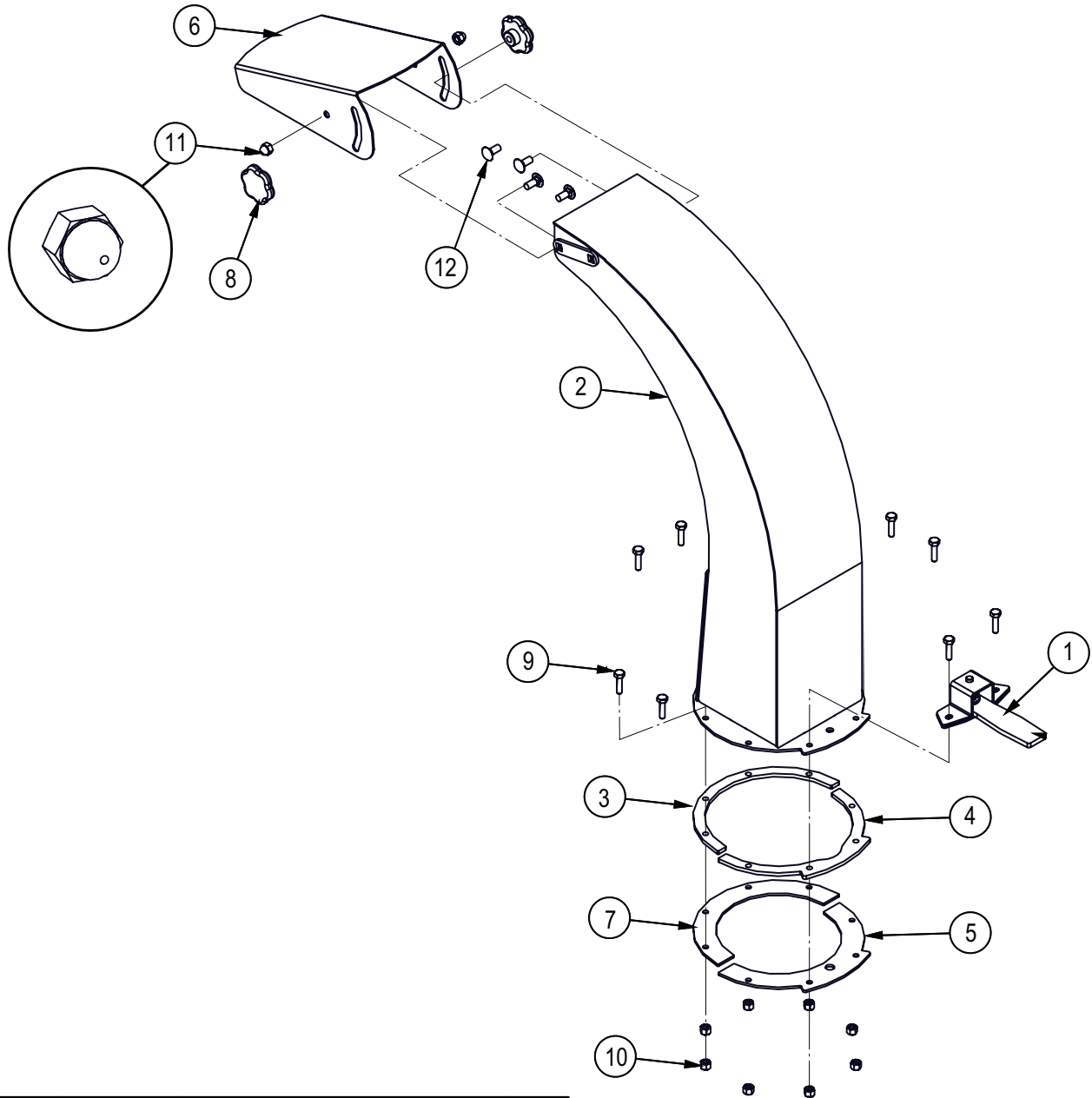
Item No.	Part No.	Description	Qty
17	Z41501	Hub, SK x 1-3/8"	1
18	Z41517	Hub, SD x 1-3/8"	1
19	Z44504	PTO Shaft	1
20	Z46544	Key, 5/16" x 5/16" x 1-1/4"	2
21	Z49101	Idler Assembly, 2-1/4" x 4" x 1"	1
22	Z71110	Hex Bolt, 1/4NC x 1"	2
23	Z71120	Hex Bolt, 1/4NC x 2"	3
24	Z71207	Hex Bolt, 5/16NC x 3/4"	3
25	Z71220	Hex Bolt, 5/16NC x 2"	3
26	Z71672G8	Hex Bolt, 5/8NF x 1-3/4" G8	16
27	Z72221	Hex Lock Nut, 5/16NC	4
28	Z72341	Jam Nut, 7/16NC	2
29	Z74121	Set Screw, 5/16NC x 3/8"	4
30	Z76521	Eye Bolt, 5/16NC x 4"	2
31	Z92310	PTO Support Chain with Two Snaps	1

Rotor Detail

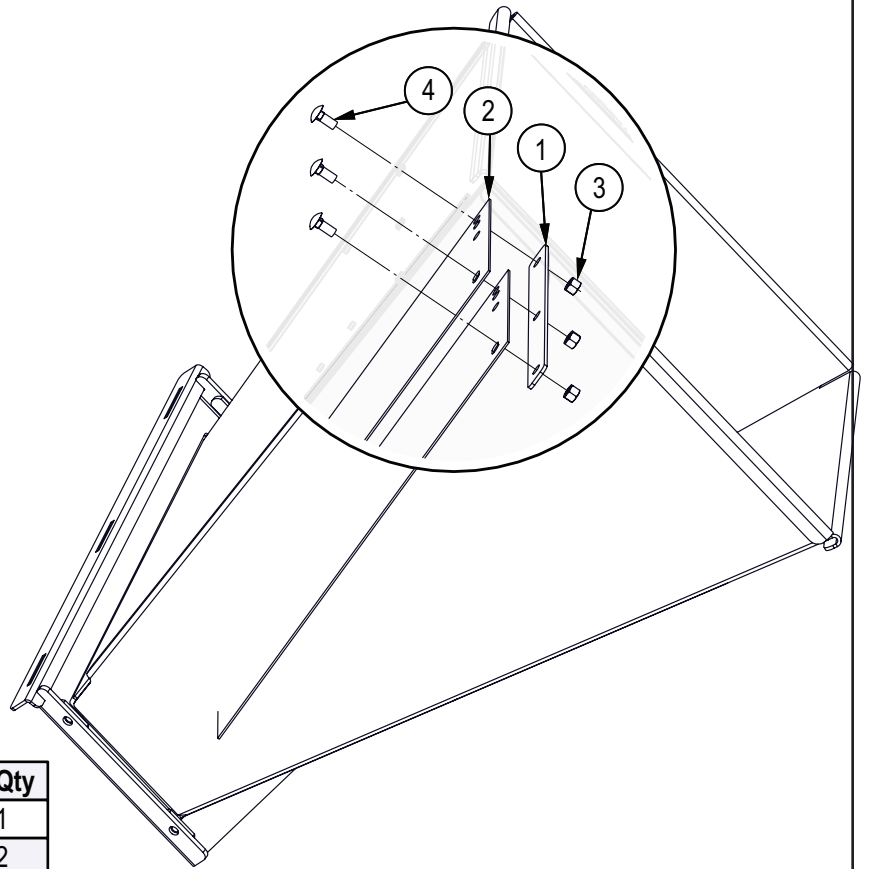


Item No.	Part No.	Description	Qty
1	1016W603	Rotor	1
2	1016W626	Retainer Pin	3
3	1011M103	Knife, 4" Rotor	2
4	1016M608	Knife, BXM Shredder	30
5	1016M613	Spacer, Shredder	27
6	1016M627	Bushing, Retainer Rod	3
7	Z71372G8	Hex Bolt, 3/8NF x 5/8" G8	8
8	Z72261	Hex Lock Nut, 5/8NC	3

Discharge Chute Assembly



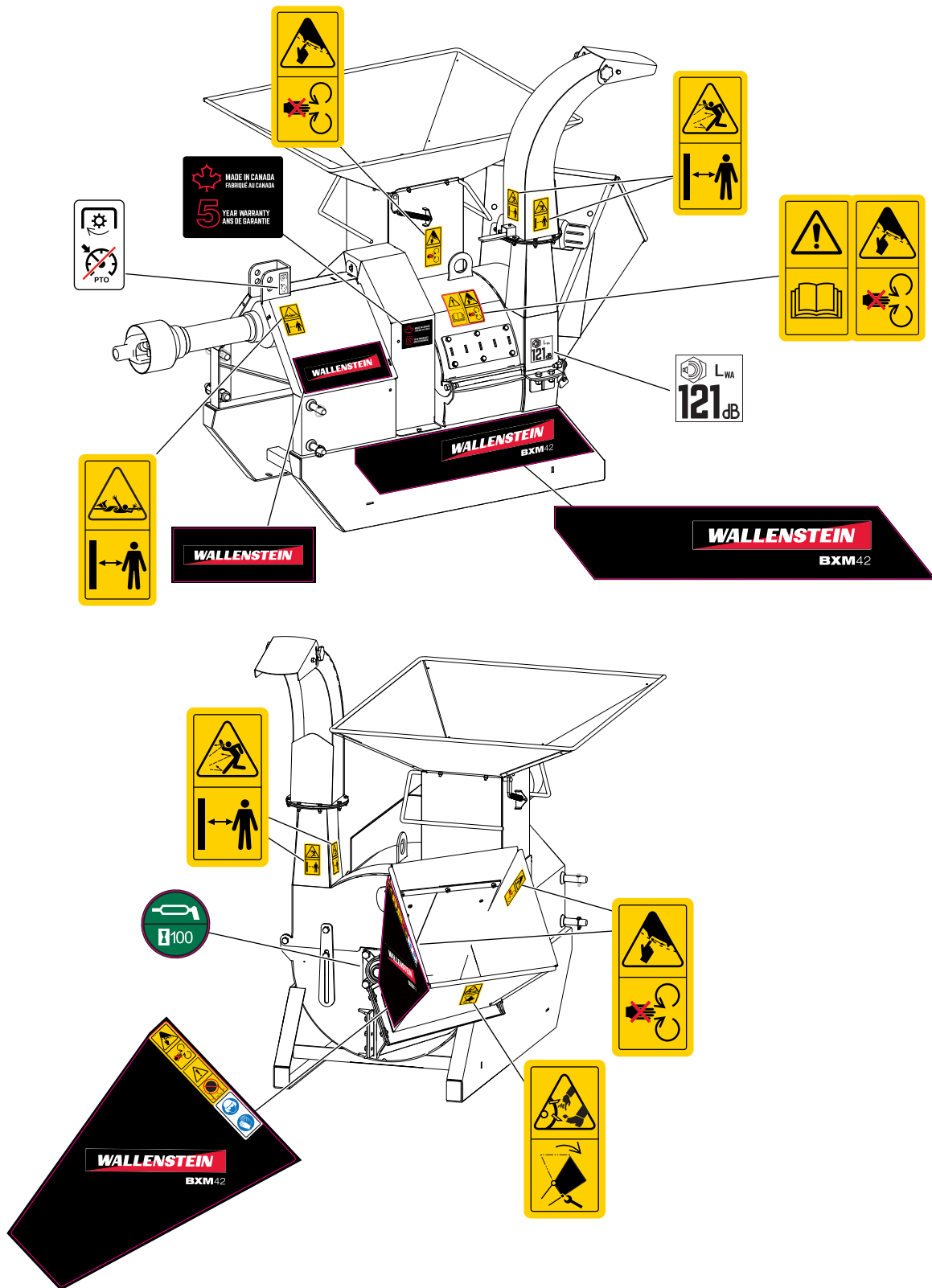
Item No.	Part No.	Description	Qty
1	1012W208	Assembly, Hood Latch	1
2	1016W007	Discharge Chute	1
3	1016L027	Plate, Spacer Ring	1
4	1016L029	Plate, Spacer Ring	1
5	1016L030	Plate, Hood Capture	1
6	1016L033	Deflector, Discharge Chute	1
7	1016L034	Plate, Hood Capture	1
8	Z19313	Hand Knob, 5/16NC Female Stud	2
9	Z71110	Hex Bolt, 1/4NC x 1"	8
10	Z72211	Hex Lock Nut, 1/4NC	8
11	Z72914	Acorn Nut, 5/16NC	2
12	Z76221	Carriage Bolt, 5/16NC x 3/4"	4

Hopper Flap Detail

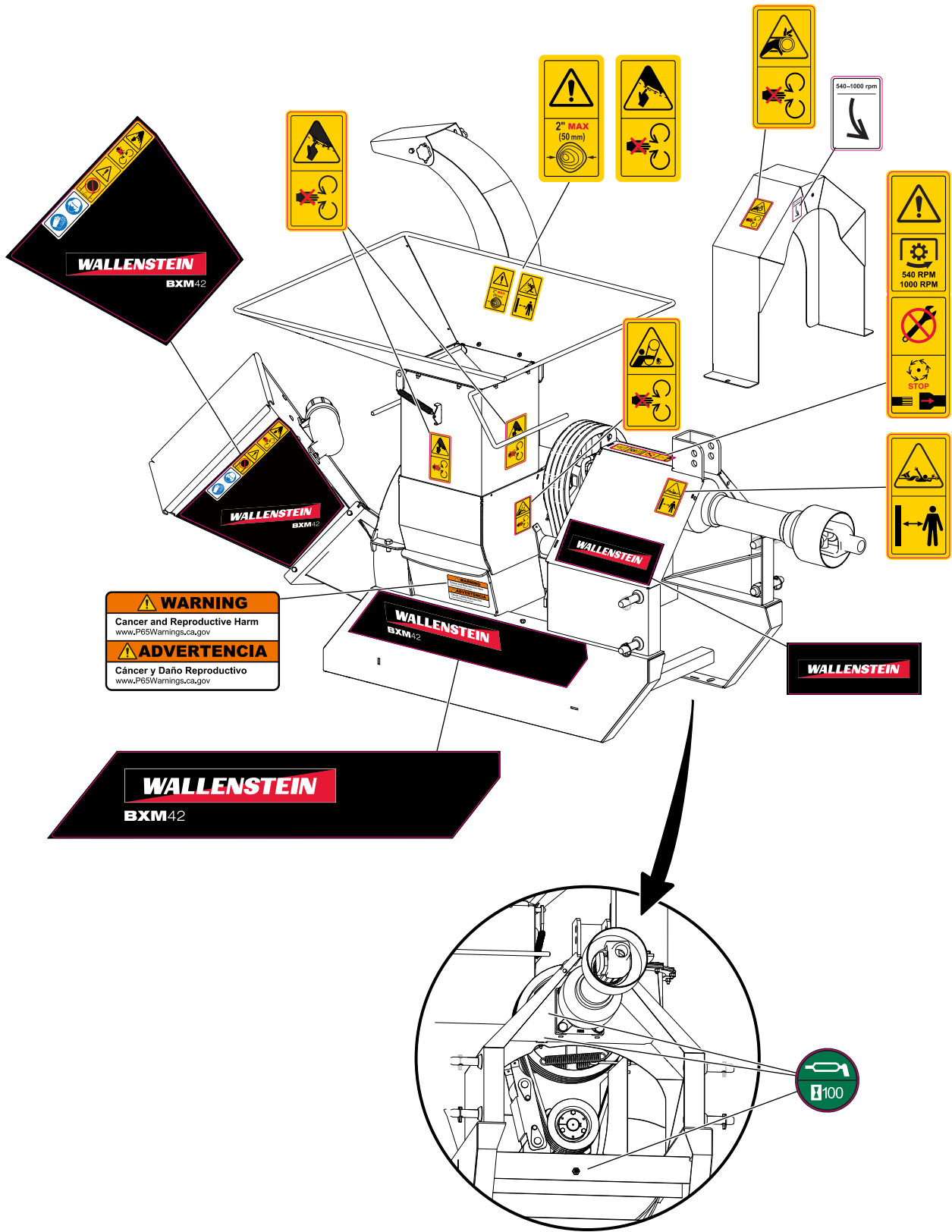
Item No.	Part No.	Description	Qty
1	1011L151	Strap, Hopper Flap	1
2	1011S103	Flap, Hopper	2
3	Z72221	Hex Lock Nut, 5/16NC	3
4	Z76221	Carriage Bolt, 5/16NC x 3/4"	3

Decal Layout

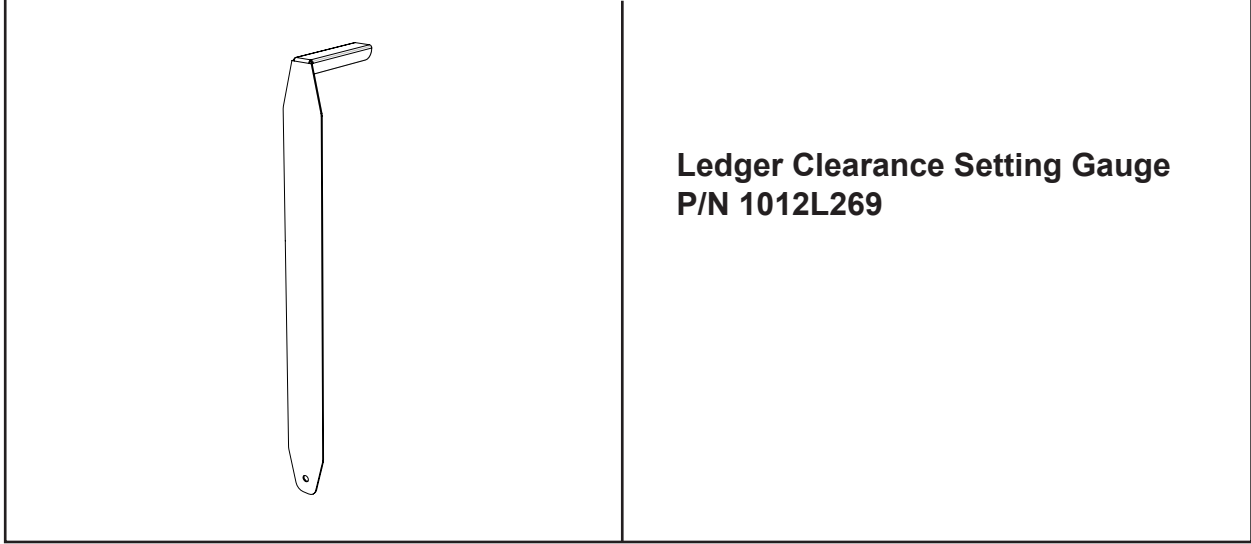
IMPORTANT! If parts are replaced that have safety signs on them, new signs must be applied. Safety signs must always be replaced if they become damaged, are removed, or become illegible.



Decal Layout



Accessories



Call your dealer for pricing and availability

Common Bolt Torque Values

Checking Bolt Torque

The tables shown give correct torque values for various bolts and capscrews. Tighten all bolts to the torque values specified in the table, unless indicated otherwise. Check tightness of bolts periodically.

IMPORTANT! If replacing hardware, use fasteners of the same grade.

IMPORTANT! Torque figures indicated in the table are for non-greased or non-oiled threads. Do not grease or oil threads unless indicated otherwise. When using a thread locker, increase torque values by 5%.



NOTE: Bolt grades are identified by their head markings.

Imperial Bolt Torque Specifications

Bolt Diameter	Torque Value					
	SAE Gr. 2		SAE Gr. 5		SAE Gr. 8	
	lbf·ft	N·m	lbf·ft	N·m	lbf·ft	N·m
1/4"	6	8	9	12	12	17
5/16"	10	13	19	25	27	36
3/8"	20	27	33	45	45	63
7/16"	30	41	53	72	75	100
1/2"	45	61	80	110	115	155
9/16"	60	95	115	155	165	220
5/8"	95	128	160	215	220	305
3/4"	165	225	290	390	400	540
7/8"	170	230	420	570	650	880
1"	225	345	630	850	970	1320



SAE Gr. 2



SAE Gr. 5



SAE Gr. 8

Metric Bolt Torque Specifications

Bolt Diameter	Torque Value			
	Gr. 8.8		Gr. 10.9	
	lbf·ft	N·m	lbf·ft	N·m
M3	0.4	0.5	1.3	1.8
M4	2.2	3	3.3	4.5
M6	7	10	11	15
M8	18	25	26	35
M10	37	50	52	70
M12	66	90	92	125
M14	83	112	116	158
M16	166	225	229	310
M20	321	435	450	610
M30	1,103	1 495	1,550	2 100



8.8



10.9

Hydraulic Fitting Torque Values

Tightening Flare Type Tube Fittings

1. Check flare and flare seat for defects that might cause leakage.
2. Align tube with fitting before tightening.
3. Hand-tighten swivel nut until snug.
4. To prevent twisting the tube, use two wrenches. Place one wrench on the connector body and tighten the swivel nut with the second. Torque to values shown.

If a torque wrench is not available, use the FFFT (Flats From Finger Tight) method.

Hydraulic Fitting Torque							
Tube Size OD	Hex Size Across Flats	Torque value		Flats From Finger Tight			
		Inches	Inches	lbf•ft	N•m	Flats	Turns
3/16	7/16			6	8	2	1/6
1/4	9/16			11–12	15–17	2	1/6
5/16	5/8			14–16	19–22	2	1/6
3/8	11/16			20–22	27–30	1-1/4	1/6
1/2	7/8			44–48	59–65	1	1/6
5/8	1			50–58	68–79	1	1/6
3/4	1-1/4			79–88	107–119	1	1/8
1	1-5/8			117–125	158–170	1	1/8

Values shown are for non-lubricated connections.