

PARTS MANUAL

Serial number 201S001 to 210S181, 1100000 and up

LXG210S / SB Mini Skid Steer Grapple

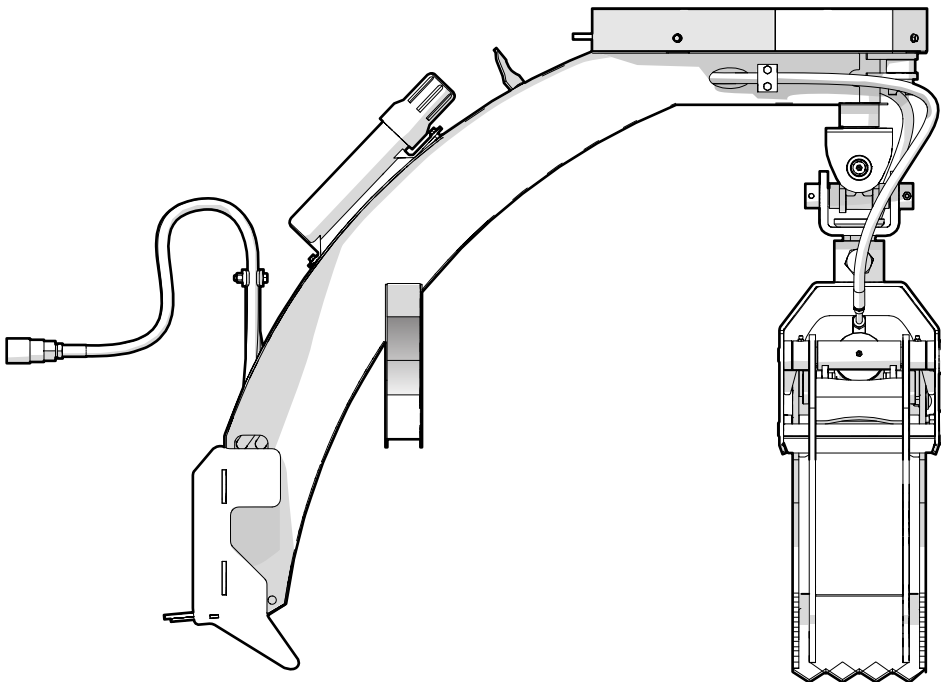


Table of Contents

Introduction3
Model and Serial Number Location.....3
Main Assembly4
Main Assembly5
Pivot Assembly Detail6
Return Lock Assembly Detail7
Grapple Assembly8
Wide (Outside) Fork Assembly.....9
Hydraulic Circuit.....10
Label Locations11
Accessories12
Bolt Torque13
Hydraulic Fitting Torque.....14
Lug Nut Torque14

Introduction

! WARNING!

For safety, operation, and maintenance information, see the Operator's Manual for your product.

Only qualified people are approved to maintain the machine.

! WARNING!

Replace all safety labels that are missing, damaged, or illegible. If a component is replaced and it has a safety label on it, apply a safety label to the new component. If a person operates a machine with missing, damaged, or illegible safety labels it puts them at risk of serious injury or death.

W100

This document provides information about the original equipment manufacturer (OEM) components (parts). Always replace a part with the correct OEM part. For service, support, or to order parts, contact your local Wallenstein Equipment dealer or distributor.

Always provide the model and serial number of your Wallenstein product when you order parts, or request service or other information. The model and serial number location is shown in the following illustration.

Record the model and serial number of your product here:

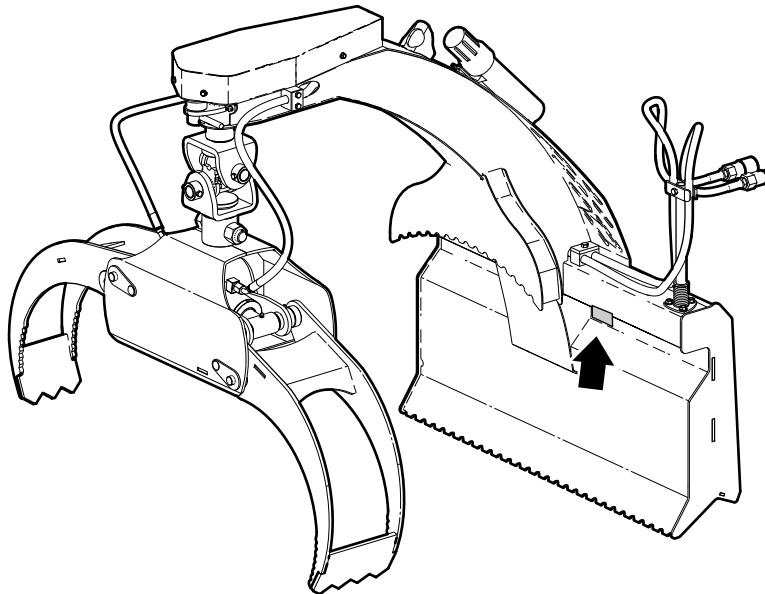
Model	
Serial Number	

The information contained in this document was current at the revision date noted on the bottom of each page. Wallenstein Equipment reserves the right to change product specifications at any time without notice. If your product specifications are different from the information in this document, contact your local dealer or distributor. To find a local dealer or distributor, go to WallensteinEquipment.com and select **Dealer Locator** at the bottom of the page.

Wallenstein Equipment Inc. • © 2024. All rights reserved.

No part of this work may be copied, reproduced, replaced, distributed, published, displayed, modified, or transferred in any form or by any means except with the prior permission of Wallenstein Equipment Inc.

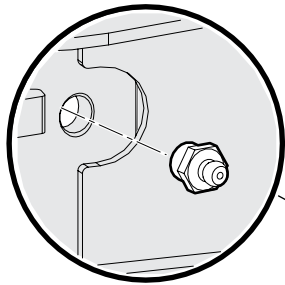
Model and Serial Number Location



Main Assembly

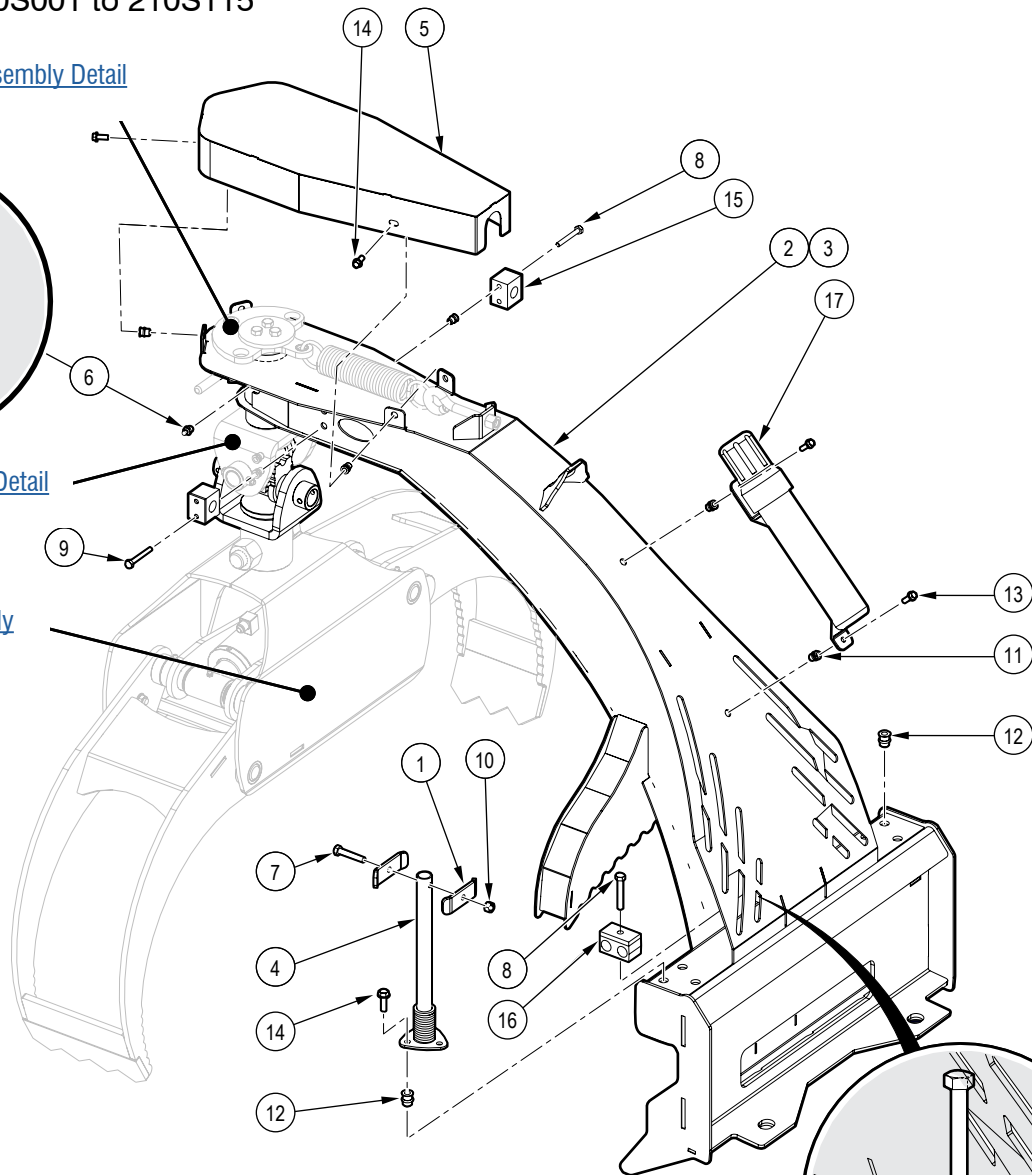
Serial number 210S001 to 210S115

See [Return Lock Assembly Detail](#)



See [Pivot Assembly Detail](#)

See [Grapple Assembly](#)



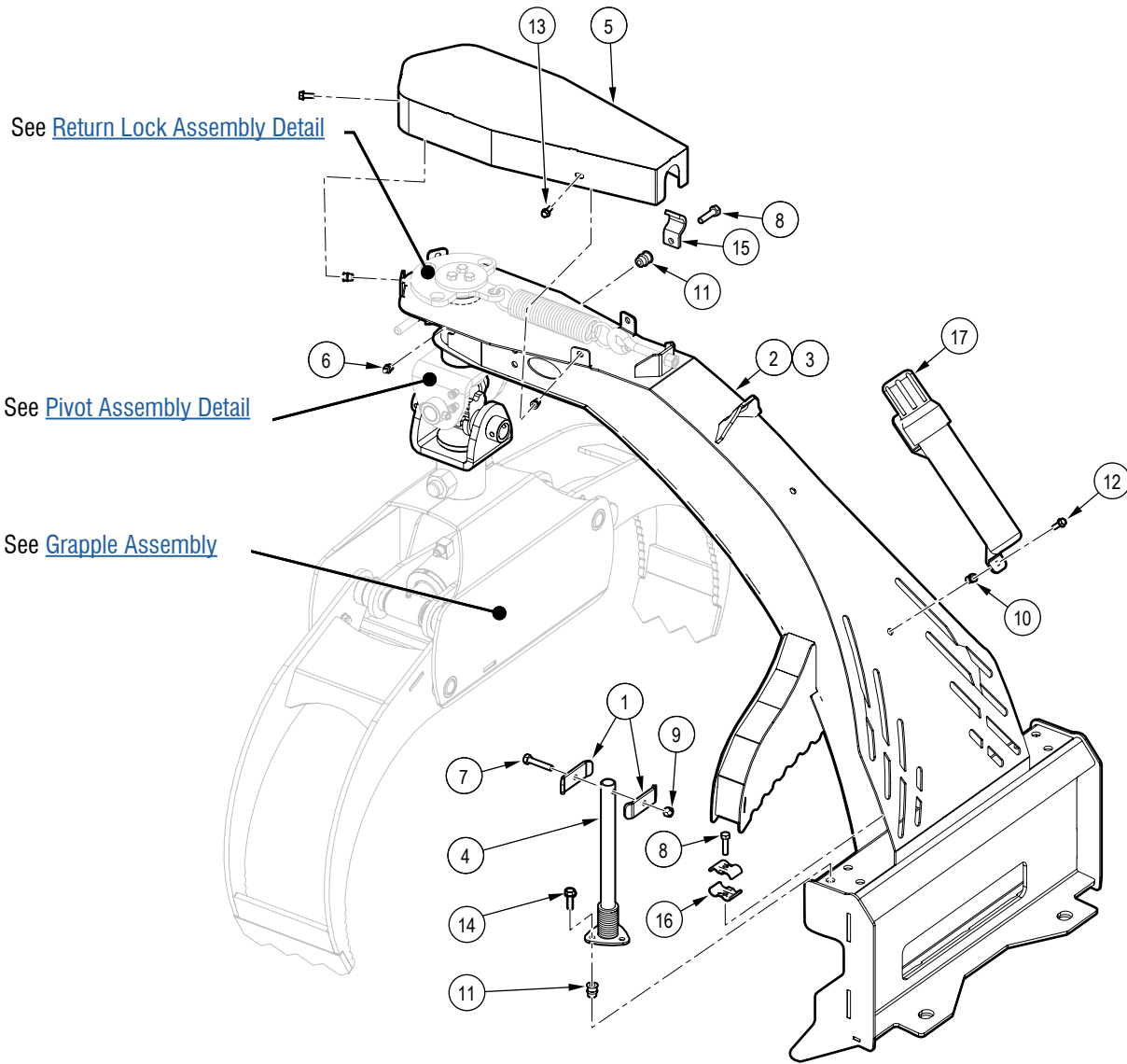
Detail of Items #8 and #16 Installation

Item	Part number	Description	Quantity
1	6075L021	Clamp, Double Hose	2
2	6075W001	Main Boom – LXG210S	1
3	6075W501	Main Boom – LXG210SB	1
4	6075W002	Hose Mount Whip	1
5	6075W003	Spring Guard	1
6	Z29201	Grease Fitting, MP02	1
7	Z71120	Hex Bolt, 1/4NC x 2"	4
8	Z71212	Hex Bolt, 5/16NC x 1-1/4"	1
9	Z71220	Hex Bolt, 5/16NC x 2"	2

Item	Part number	Description	Quantity
10	Z72221	Hex Lock Nut, 5/16NC	1
11	Z72955	Rivet Nut, 1/4NC x 165	10
12	Z72957	Rivet Nut, 5/16NC x 312	6
13	Z76111	Flange Bolt, 1/4NC x 3/4"	2
14	Z76117	Flange Bolt, 1/4NC x 5/8"	4
15	Z76125	Flange Bolt, 5/16NC x 1"	3
16	2250L286	Hose Clamp, 2 x 3/8"	4
17	Z96505	Manual Tube, 2" Short	1

Main Assembly

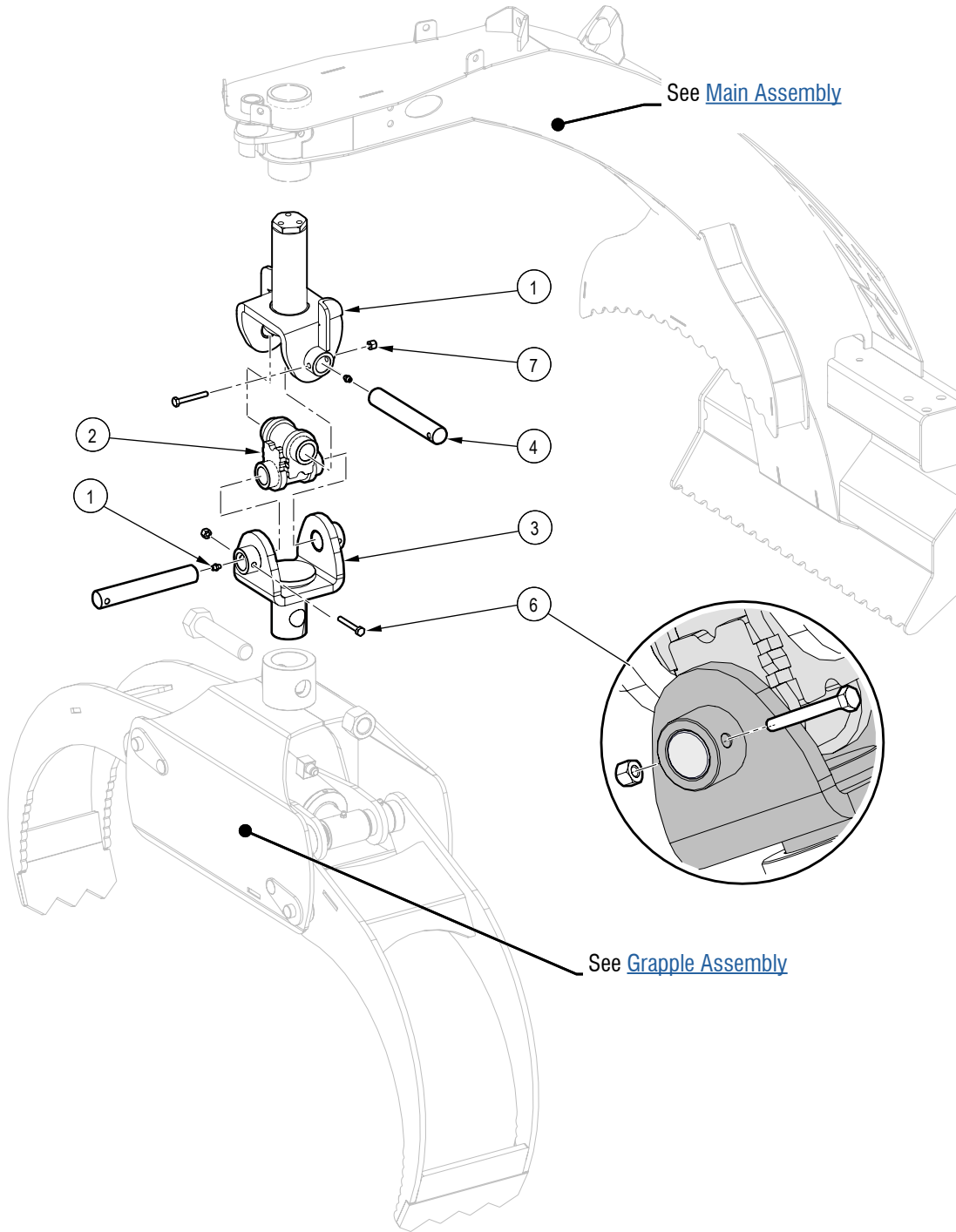
Serial number 210S116 & Up



Item	Part number	Description	Quantity
1	6075L021	Clamp, Double Hose	2
2	6075W001	Main Boom – LXG210S	1
3	6075W501	Main Boom – LXG210SB	1
4	6075W002	Hose Mount Whip	1
5	6075W003	Spring Guard	1
6	Z29201	Grease Fitting, MP02	1
7	Z71217	Hex Bolt, 5/16NC x 1-3/4"	1
8	Z71212	Hex Bolt, 5/16NC x 1-1/4"	3
9	Z72221	Hex Lock Nut, 5/16NC	1

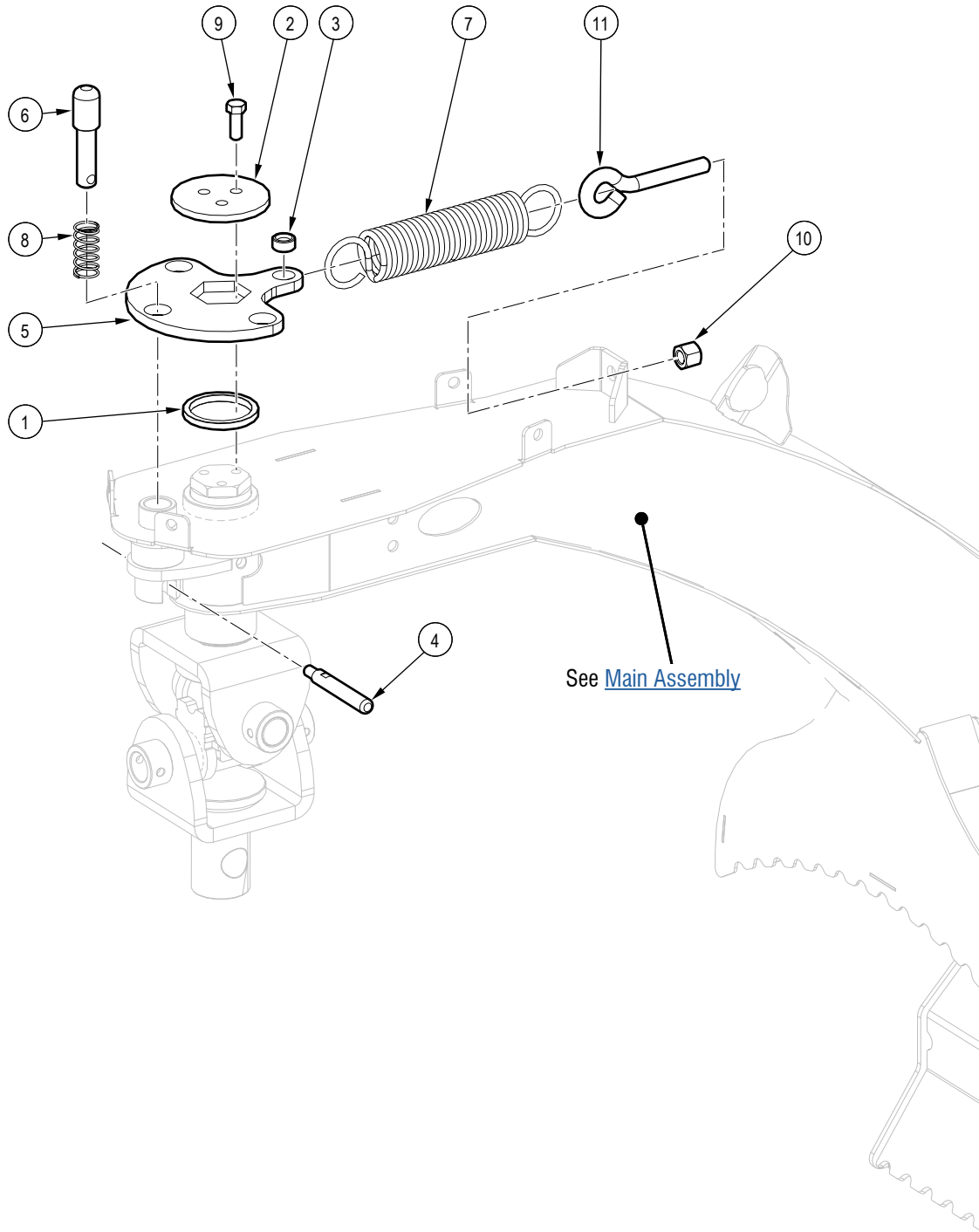
Item	Part number	Description	Quantity
10	Z72955	Rivet Nut, 1/4NC x 165	6
11	Z72957	Rivet Nut, 5/16NC x 312	10
12	Z76111	Flange Bolt, 1/4NC x 3/4"	2
13	Z76117	Flange Bolt, 1/4NC x 5/8"	4
14	Z76125	Flange Bolt, 5/16NC x 1"	3
15	6011L128	Hose Clamp, 1 x 3/8"	2
16	2250L286	Hose Clamp, 2 x 3/8"	2
17	Z96505	Manual Tube, 2" Short	1

Pivot Assembly Detail



Item	Part number	Description	Quantity
1	6075W004	Main Pivot	1
2	6075W005	Pivot Link	1
3	6075W006	Grapple Pivot	1
4	6011M107	Greasable Pin	2
5	Z29202	Grease Fitting, 1/4NF	2
6	Z71120	Hex Bolt, 1/4NC x 2"	2
7	Z72211	Hex Lock Nut, 1/4NC	2

Return Lock Assembly Detail

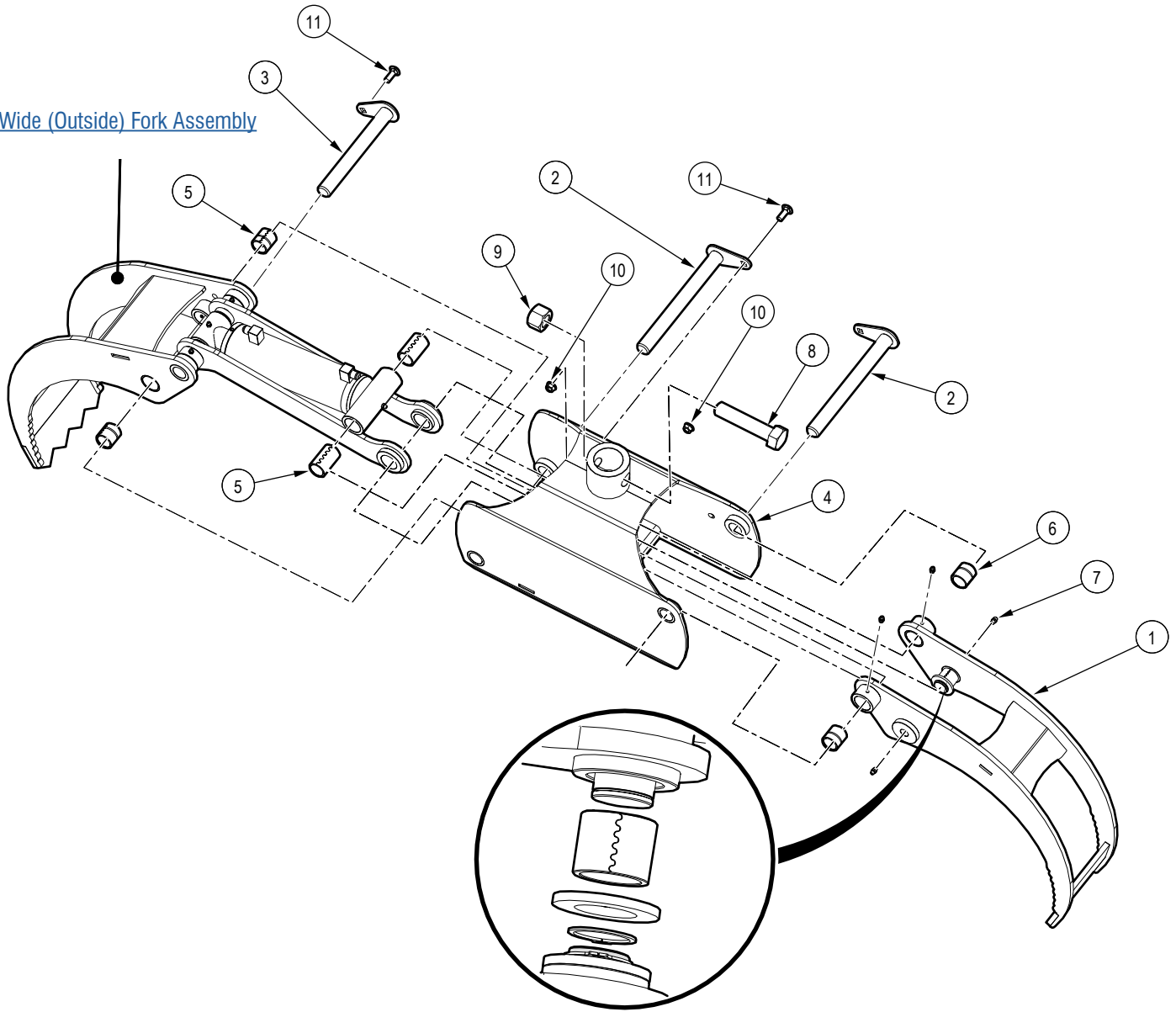


Item	Part number	Description	Quantity
1	6011M104	Flat Bearing	1
2	6016L003	Plate, Main Pivot Keeper	1
3	6016M007	Bushing, Spring	1
4	6016M511	6016M511	1
5	6071L109	Flange	1
6	6071M102	Pin, Grapple Lock	1
7	Z31502	Ext Spring, 1-3/4" OD x 9" x .207"	1

Item	Part number	Description	Quantity
8	Z32306	Comp Spring, 0.845" OD x 1-3/4" x 0.068"	1
9	Z71310	Flange Bolt, 3/8NC x 1"	3
10	Z72331	Jam Nut, 3/8NC	2
11	Z76533	Eye Bolt, 3/8NC x 2-1/2"	1

Grapple Assembly

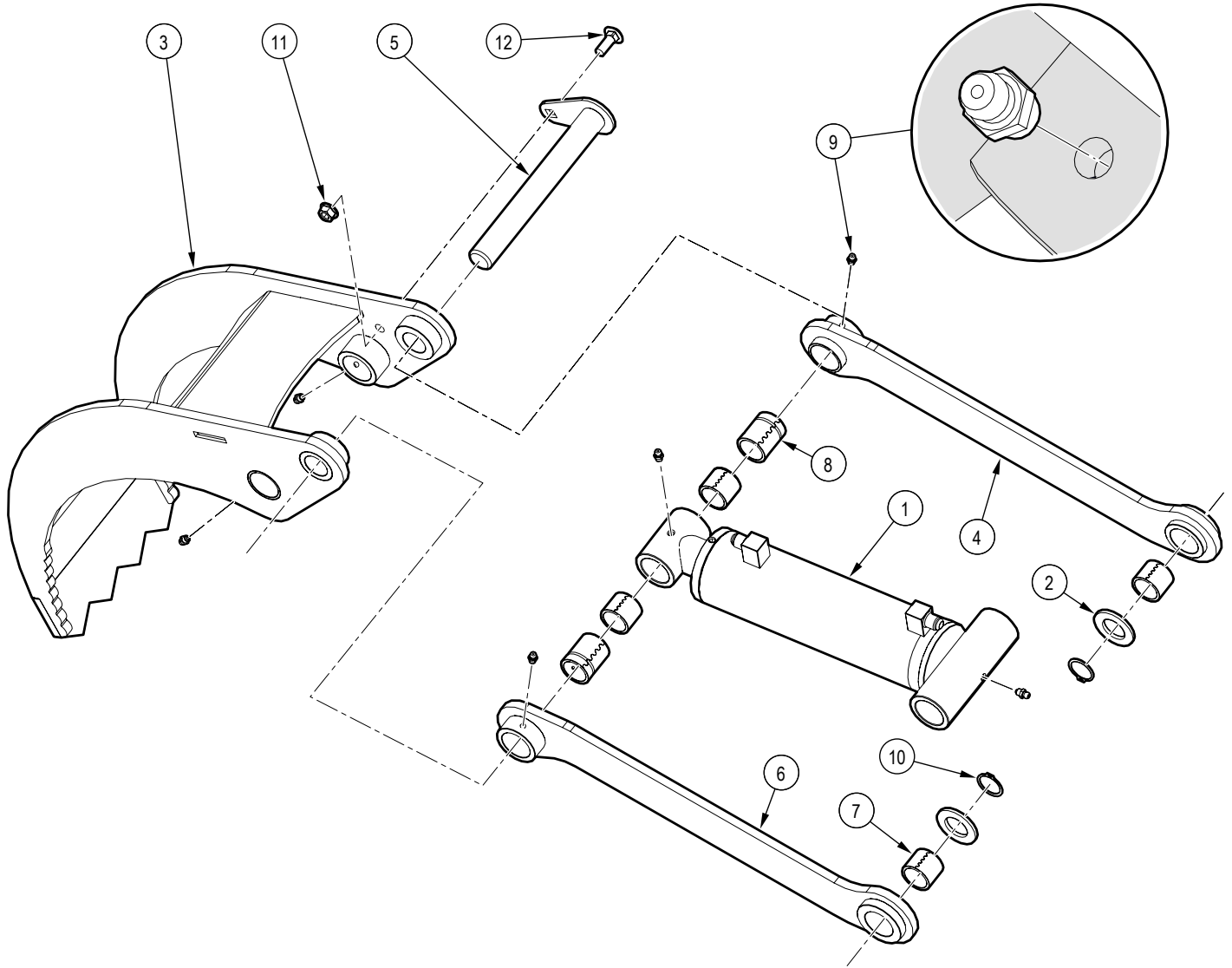
See [Wide \(Outside\) Fork Assembly](#)



Item	Part number	Description	Quantity
1	6012W201	Narrow (Inside) Fork	1
2	6012W203	1" Flange Pin	2
3	6012W205	1" Hex Head Pin	1
4	6012W215	Main Grapple Frame	1
5	Z27222	Connex Bushing, 1" ID x 2" Long x 1/8" Wall	2
6	Z27227	Connex Bushing, 1" ID x 1-1/4" Long x 1/8" Wall x 1/2" Groove Center	4

Item	Part number	Description	Quantity
7	Z29202	Grease Fitting, 1/4NF	4
8	Z71911	Hex Bolt, 1NC x 4-1/2"	1
9	Z72291	Hex Lock Nut, 1NC	1
10	Z72531	Serrated Flange Locknut, 3/8NC	3
11	Z76231	Carriage Bolt, 3/8NC x 1"	3

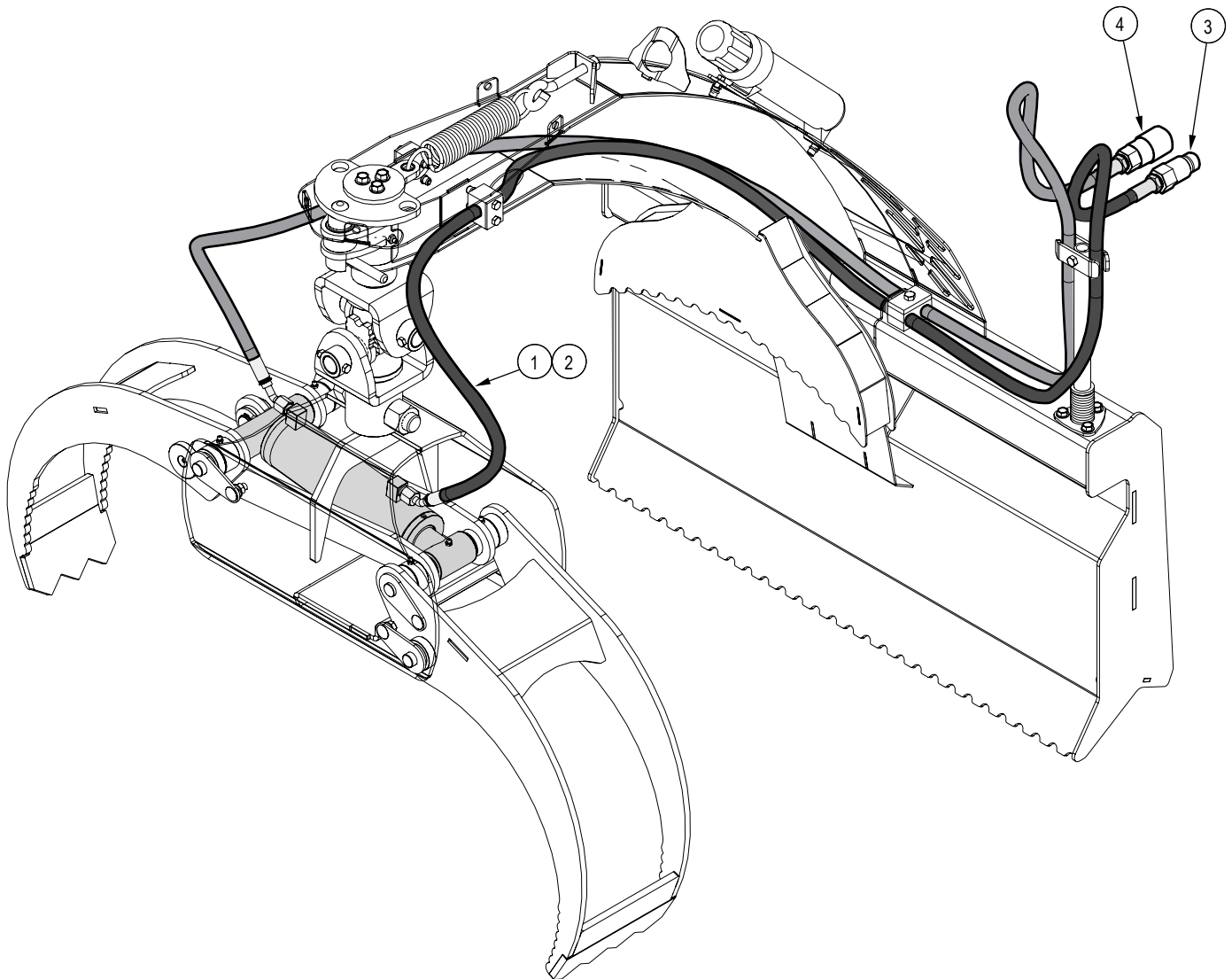
Wide (Outside) Fork Assembly



Item	Part number	Description	Quantity
1	6012C205	Cylinder, 2-1/2 x 6	1
2	6012L118	Washer, Linkage	2
3	6012W202	Wide (Outside) Fork	1
4	6012W204	Linkage Bar	1
5	6012W205	1" Hex Head Pin	1
6	6012W207	Linkage Bar	1
7	Z27223	Connex Bushing, 1" ID x 1" Long x 1/8" Wall	4

Item	Part number	Description	Quantity
8	Z27226	Connex Bushing, 1" ID x 1-1/2" Long x 1/8" Wall x 3/8" Groove Center	2
9	Z29202	Grease Fitting, 1/4NF	6
10	Z46204	External Retaining Ring, 1"	2
11	Z72531	Serrated Flange Locknut, 3/8NC	1
12	Z76231	Carriage Bolt, 3/8NC x 1"	1

Hydraulic Circuit



Item	Part number	Description	Quantity
1	6075F001	3/8" Hose, 45FJIC06 x MP08 x 108" – LXG210S	2
2	6075F501	3/8" Hose, 45FJIC06 x MP08 x 113" – LXG210B	2
3	Z51919	Flat-Face Coupler, FP08 x M ISO 16028	1
4	Z51920	Flat-Face Coupler, FP08 x F ISO 16028	1

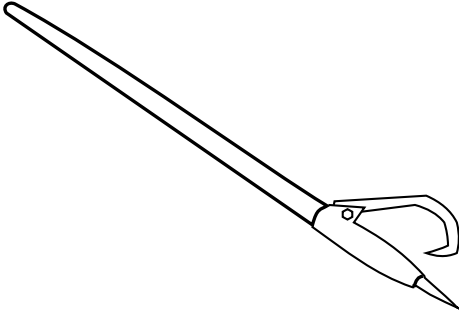
Accessories

For price and availability, contact your local Wallenstein dealer or distributor.

For accessory installation instructions, go to WallensteinEquipment.com/Support.aspx, and then select **Accessories**.

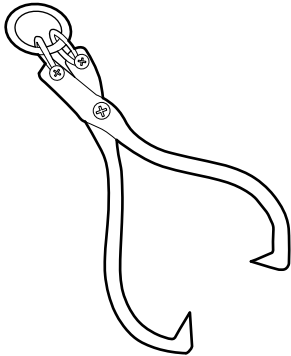
Log Peavey 48" (122 cm) Z99001

Quality 2-3/8" (60 mm) diameter hardwood handle, with a Western Duck Bill hook.
Helps to move those heavy log timbers into position



Skidding Tongs Z99003

Heavy Duty Forged Ring Skidding Tongs
Maximum Opening: 25" (63.5 cm)
Minimum Opening: 4-1/2" (11 cm)
Tough log skidding tongs are a quick and easy way to skid logs.



Bolt Torque

IMPORTANT! If you replace hardware, use fasteners of the same grade.

IMPORTANT! The torque specifications in these tables are for non-greased or non-oiled threads. Do not grease or oil fastener threads unless otherwise indicated. When using a thread lock, increase the specified torque 5%.



Bolt grades are identified by the marks on the bolt head.

The bolt torque specification tables provide the correct torque settings for common bolts and capscrews. Tighten all bolts to the torque that is specified in the table, unless otherwise indicated. Check the bolt tightness periodically.

Imperial Bolt Torque Specifications

Bolt Diameter	Torque					
	SAE Gr. 2		SAE Gr. 5		SAE Gr. 8	
	lbf•ft	N•m	lbf•ft	N•m	lbf•ft	N•m
1/4 inch	6	8	9	12	12	17
5/16 inch	10	13	19	25	27	36
3/8 inch	20	27	33	45	45	63
7/16 inch	30	41	53	72	75	100
1/2 inch	45	61	80	110	115	155
9/16 inch	60	95	115	155	165	220
5/8 inch	95	128	160	215	220	305
3/4 inch	165	225	290	390	400	540
7/8 inch	170	230	420	570	650	880



SAE Gr. 2



SAE Gr. 5



SAE Gr. 8

Metric Bolt Torque Specifications

Bolt Diameter	Torque			
	Gr. 8.8		Gr. 10.9	
	lbf•ft	N•m	lbf•ft	N•m
M3	0.4	0.5	1.3	1.8
M4	2.2	3	3.3	4.5
M6	7	10	11	15
M8	18	25	26	35
M10	37	50	52	70
M12	66	90	92	125
M14	83	112	116	158
M16	166	225	229	310
M20	321	435	450	610
M30	1,103	1,495	1,550	2,100



8.8



10.9

Hydraulic Fitting Torque

Tighten flare-type tube fittings:

1. Check the flare and flare seat for defects that might cause leaks.
2. Align the tube with the fitting before tightening.
3. Hand-tighten the swivel nut until it is snug.
4. To prevent the tube from twisting, use two wrenches. Place one wrench on the connector body and tighten the swivel nut with the second wrench. Torque the fitting to the correct specification.

If a torque wrench is not available, use the flats from finger tight (FFFT) method.

Hydraulic Fitting Torque Specifications					
Tube size OD	Hex size across flats	Torque		Flats from finger tight	
		lbf•ft	N•m	Flats	Turns
3/16	7/16	6	8	2	1/6
1/4	9/16	11–12	15–17	2	1/6
5/16	5/8	14–16	19–22	2	1/6
3/8	11/16	20–22	27–30	1-1/4	1/6
1/2	7/8	44–48	59–65	1	1/6
5/8	1	50–58	68–79	1	1/6
3/4	1-1/4	79–88	107–119	1	1/8
1	1-5/8	117–125	158–170	1	1/8

Specifications are for non-lubricated connections.

Lug Nut Torque



WARNING!

Wheel lug nuts must be installed and kept at the correct torque to prevent loose wheels, broken studs, or possible separation of a wheel from the axle.

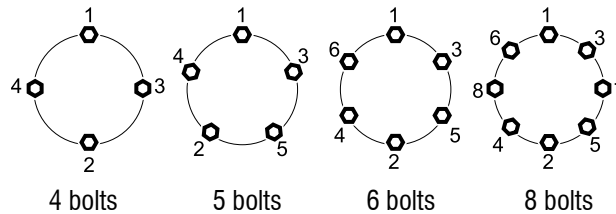
It is an extremely important safety procedure to apply and maintain the correct torque on lug nuts that secure the wheel to the trailer axle. A calibrated torque wrench is the best tool to make sure that the correct amount of torque is applied to a fastener.

Tighten wheel lug nuts to the correct torque before the first use and after each wheel removal. After a wheel is installed, check and torque the lug nuts after the first 10 miles (16 km), 25 miles (40 km), and 50 miles (80 km). Check the lug nut torque periodically thereafter.

- Start all lug nuts onto the threads by hand.
- Tighten lug nuts in stages, following the pattern shown below the Lug Nut Torque Specifications table.

Lug Nut Torque Specifications				
Wheel size	Units	First stage	Second stage	Third stage
8 inch	lbf•ft N•m	12–20 16–26	30–35 39–45.5	45–55 58.5–71.5
12 inch	lbf•ft N•m	20–25 26–32.5	35–40 45.5–52	50–60 65–78
13 inch	lbf•ft N•m	20–25 26–32.5	35–40 45.5–52	50–60 65–78
14 inch	lbf•ft N•m	20–25 26–32.5	50–60 65–78	90–120 117–156
15 inch	lbf•ft N•m	20–25 26–32.5	50–60 65–78	90–120 117–156
16 inch	lbf•ft N•m	20–25 26–32.5	50–60 65–78	90–120 117–156

Lug nut torque pattern:





MAKING WORK FEEL MORE LIKE PLAY™

WallensteinEquipment.com

