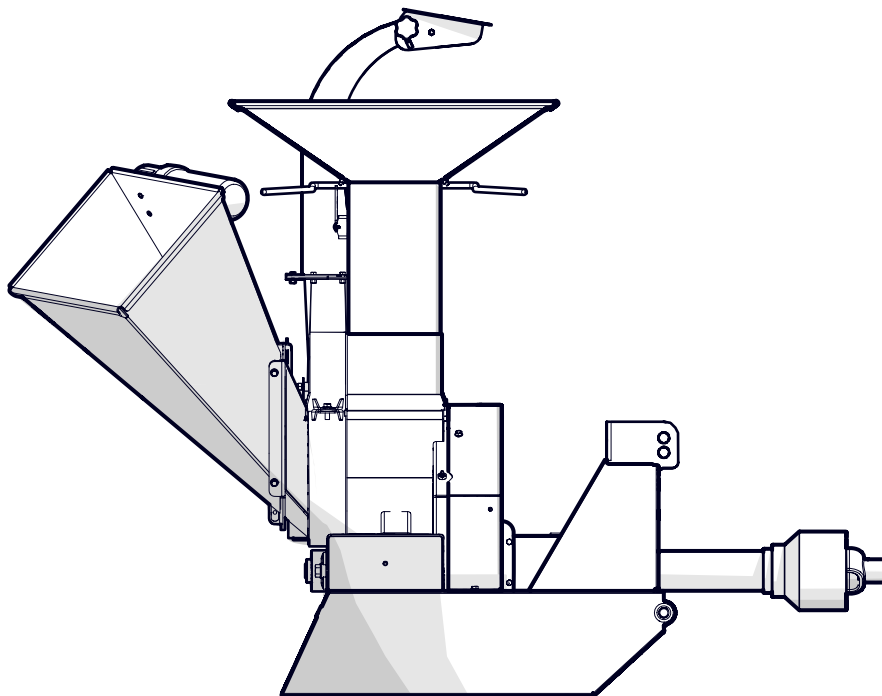


# PARTS MANUAL

---

Serial Number 1M32889 & up

## **BXM32** **3PH Chipper-Shredder**



## Foreword

This Wallenstein parts manual is prepared to assist customers in ordering quality OEM replacement parts.

Regular maintenance combined with replacing old, worn or broken parts with the correct OEM parts is essential in prolonging the life of your Wallenstein product. Refer to this manual to identify replacement parts.

To order parts, contact your Wallenstein dealer or distributor. Have the product model and serial number handy.

If your dealer is no longer available, please go to [WallensteinEquipment.com](http://WallensteinEquipment.com). At the bottom of the page, select Dealer Locator.

All information contained in this parts manual is current as per the revision date at the bottom of the page. Wallenstein reserves the right to change product specifications at any time without notice.

If your product specifications differ from those contained in this manual, contact Wallenstein for current information.

Reproduction of information in this parts manual is prohibited without prior written permission from Wallenstein Equipment Inc.

Wallenstein Equipment Inc. • © 2023



### WARNING!

**For safety, operation, and maintenance information, see the Operator's Manual.**

**Maintenance should be performed by trained personnel only.**

### Serial Number Location

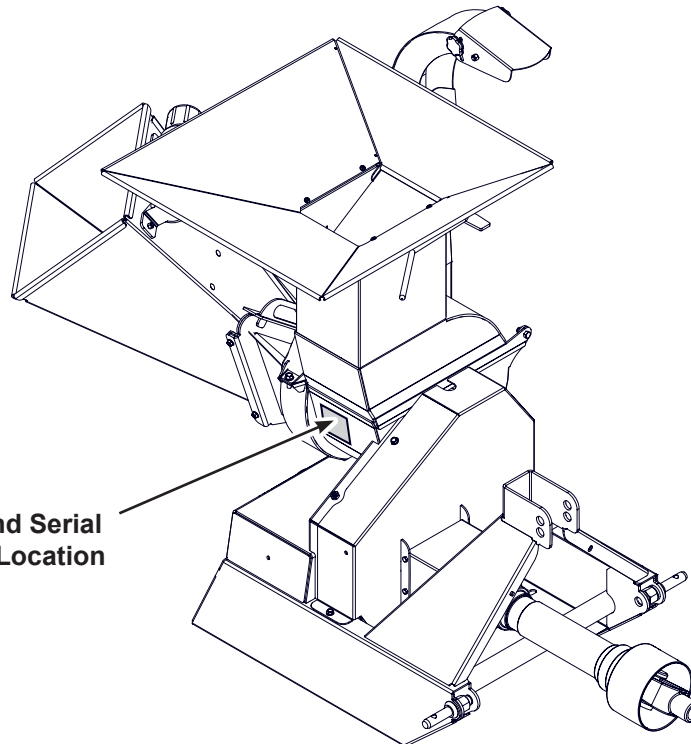
Always provide the model and serial number of your Wallenstein product when ordering parts or requesting service or other information. The serial number is on the product information plate as shown below.

**Record your product information here for future reference.**

**Model** \_\_\_\_\_

**Serial Number** \_\_\_\_\_

**Model and Serial  
Number Location**

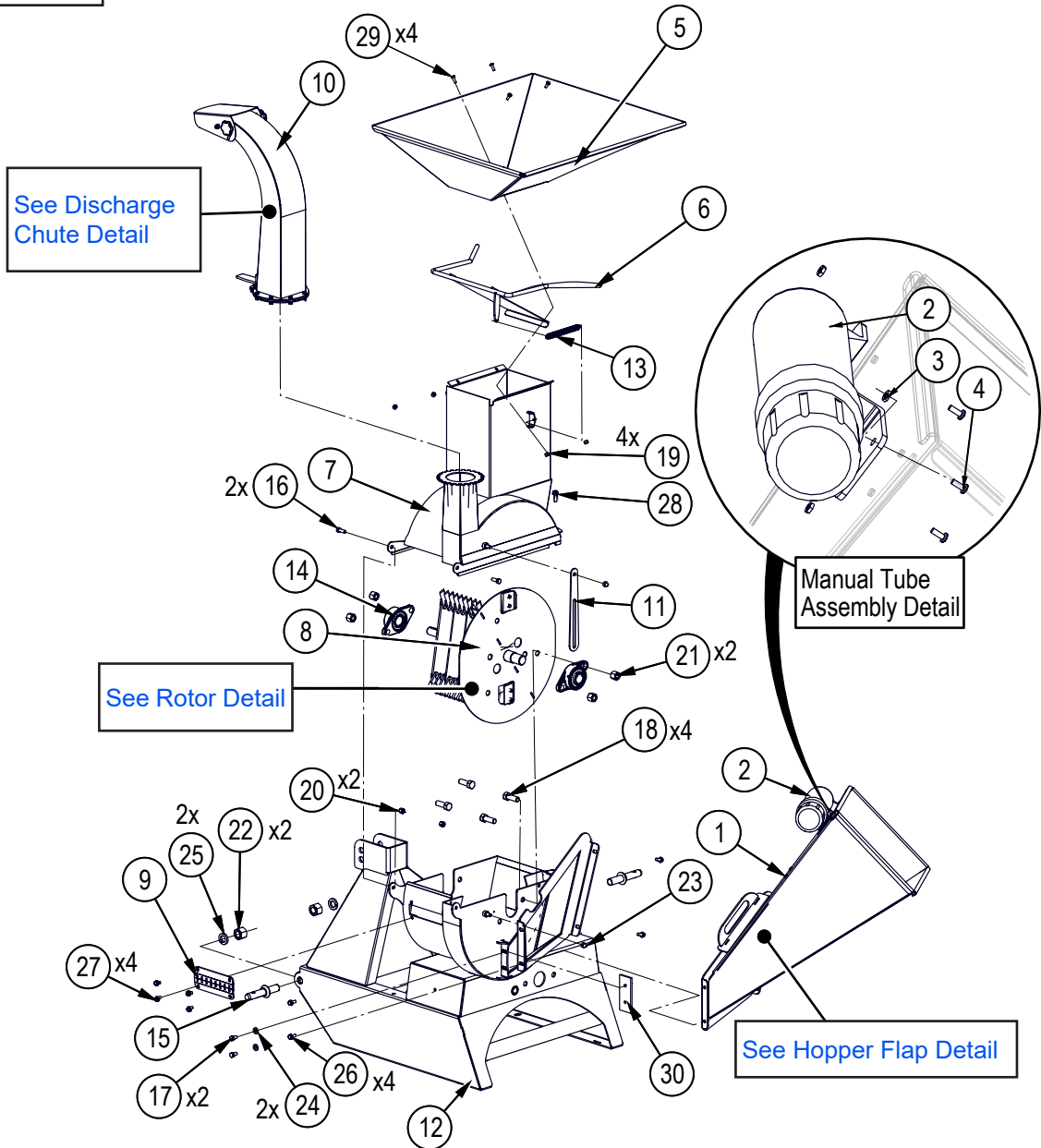


[www.wallensteinequipment.com](http://www.wallensteinequipment.com)

## Contents

<b>Main Parts.....</b>	<b>4</b>
<b>Driveline.....</b>	<b>5</b>
<b>Rotor Detail.....</b>	<b>6</b>
<b>Discharge Chute Assembly.....</b>	<b>7</b>
<b>Hopper Flap Detail .....</b>	<b>8</b>
<b>Grease Whip Detail .....</b>	<b>8</b>
<b>PTO Shaft.....</b>	<b>9</b>
<b>Decal Layout.....</b>	<b>10</b>
<b>Accessories .....</b>	<b>12</b>
<b>Common Bolt Torque Values .....</b>	<b>13</b>
<b>Hydraulic Fitting Torque Values .....</b>	<b>14</b>

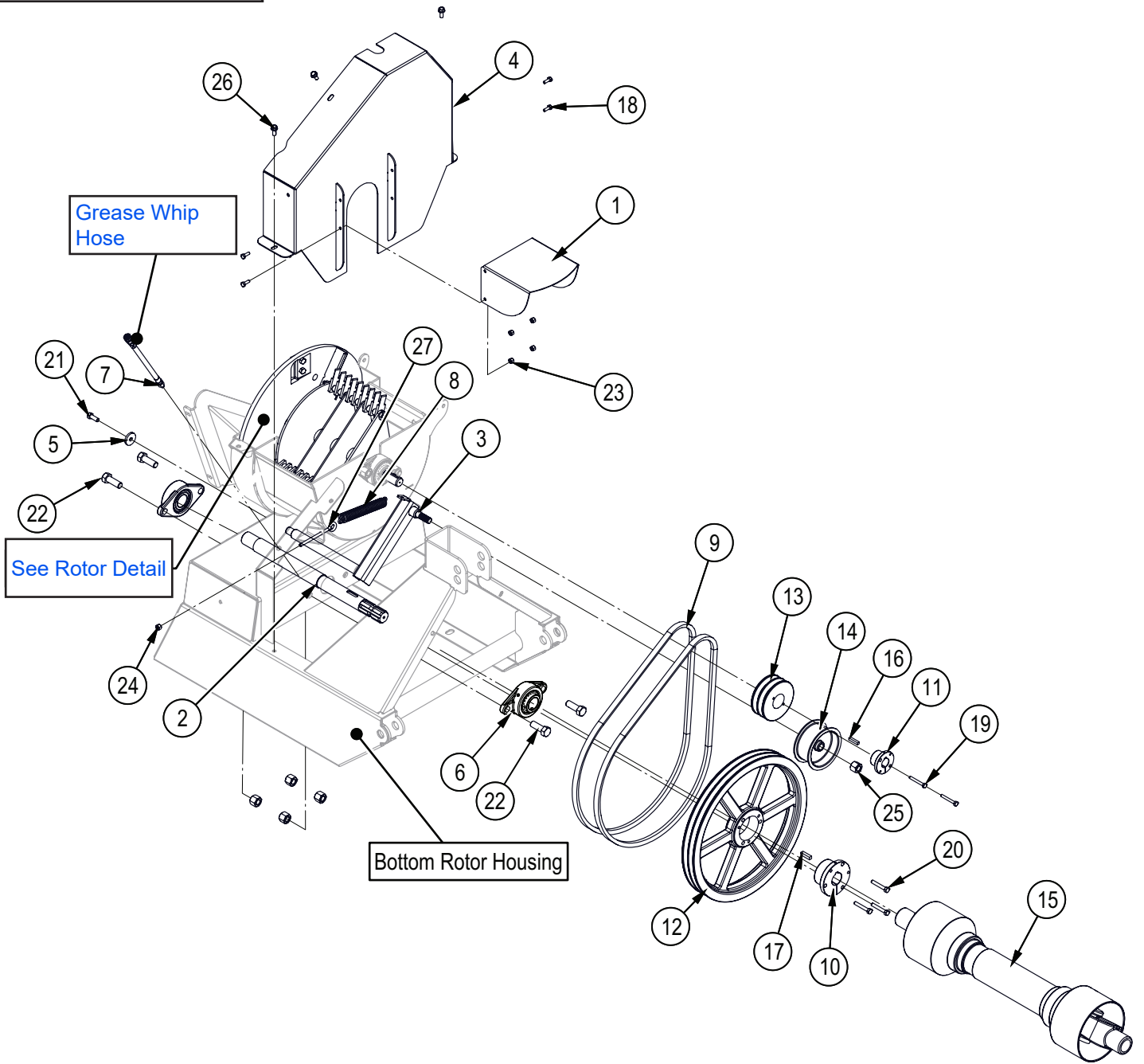
**Main Parts**



Item No.	Part No.	Description	Qty
1	1018W107	Chipper Chute	1
2	Z96503	Manual Tube, 3-1/2" Short	1
3	Z72752	Machine Nut, #10NF	3
4	Z78303	Machine Screw, #10NF x 1/2"	3
5	1056W617	Hopper Shredder Top	1
6	1056W107	Shredder, Chute Flapper	1
7	1056W102	Housing, Upper Rotor	1
8	1056W103	Rotor	1
9	1056W610	Concave	1
10	1056A302	Assembly, Discharge Chute	1
11	1056L229	Positive Stop Plate	1
12	1017W720	Housing, Bottom Rotor	1
13	Z31301	Ext Spring, 17mm OD x 140mm x 0.080"	1
14	Z25103	2-Bolt Flange Bearing, UCFL206-20	2
15	Z11431	Implement Pin, 7/8" x 1-3/4" x 7/8NF	2
16	Z71310	Hex Bolt, 3/8NC x 1"	2

Item No.	Part No.	Description	Qty
17	Z71372G8	Hex Bolt, 3/8NF x 5/8" G8	2
18	Z71617	Hex Bolt, 5/8NC x 1-3/4"	4
19	Z72211	Hex Lock Nut, 1/4NC	4
20	Z72231	Hex Lock Nut, 3/8NC	2
21	Z72261	Hex Lock Nut, 5/8NC	4
22	Z72282	Hex Lock Nut, 7/8NF	2
23	Z72911	Acorn Nut, 3/8NC	2
24	Z73131	SAE Washer, 3/8"	2
25	Z73381	Split Lock Washer, 7/8"	2
26	Z76121	Flange Bolt, 5/16NC x 3/4"	4
27	Z76122	Flange Bolt, 5/16NC x 1/2"	4
28	Z76134	Flange Bolt, 3/8NC x 1"	1
29	Z78301	Machine Screw, 1/4NC x 3/4"	4
30	1056M304	Knife, 3" Ledger	1

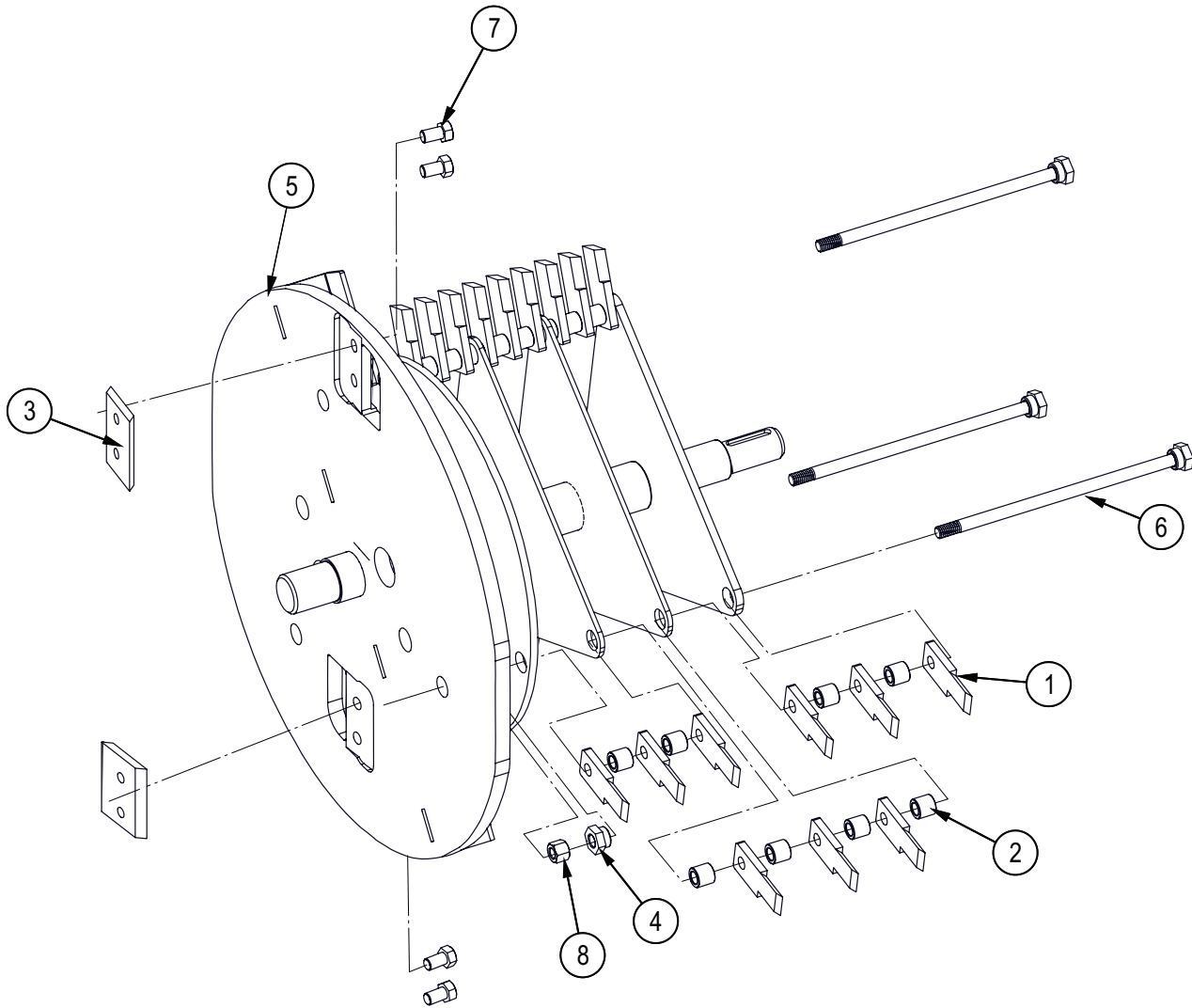
**Driveline**



Item No.	Part No.	Description	Qty
1	1017L718	PTO Cover	1
2	1017M702	Shaft, Splined	1
3	1017W701	Idler Arm	1
4	1017W702	Shield	1
5	1056L968	Washer, Idler Capture	1
6	Z25104	2-Bolt Flange Bearing, UCFL207-22	2
7	Z29309	1/4" Grease Whip Assy, 9"	1
8	Z31404	Ext Spring, 25mm OD x 178mm x 0.135"	1
9	Z41159	Single Belt, B59	2
10	Z41501	Hub, SK x 1-3/8"	1
11	Z41510	Hub, L x 1"	1
12	Z41706	Double Sheave, 2B160 x SK	1
13	Z41708	Double Sheave, 2MBL44 x L	1
14	Z49104	Idler Assembly, 4" x 1-7/8" x 5/8"	1

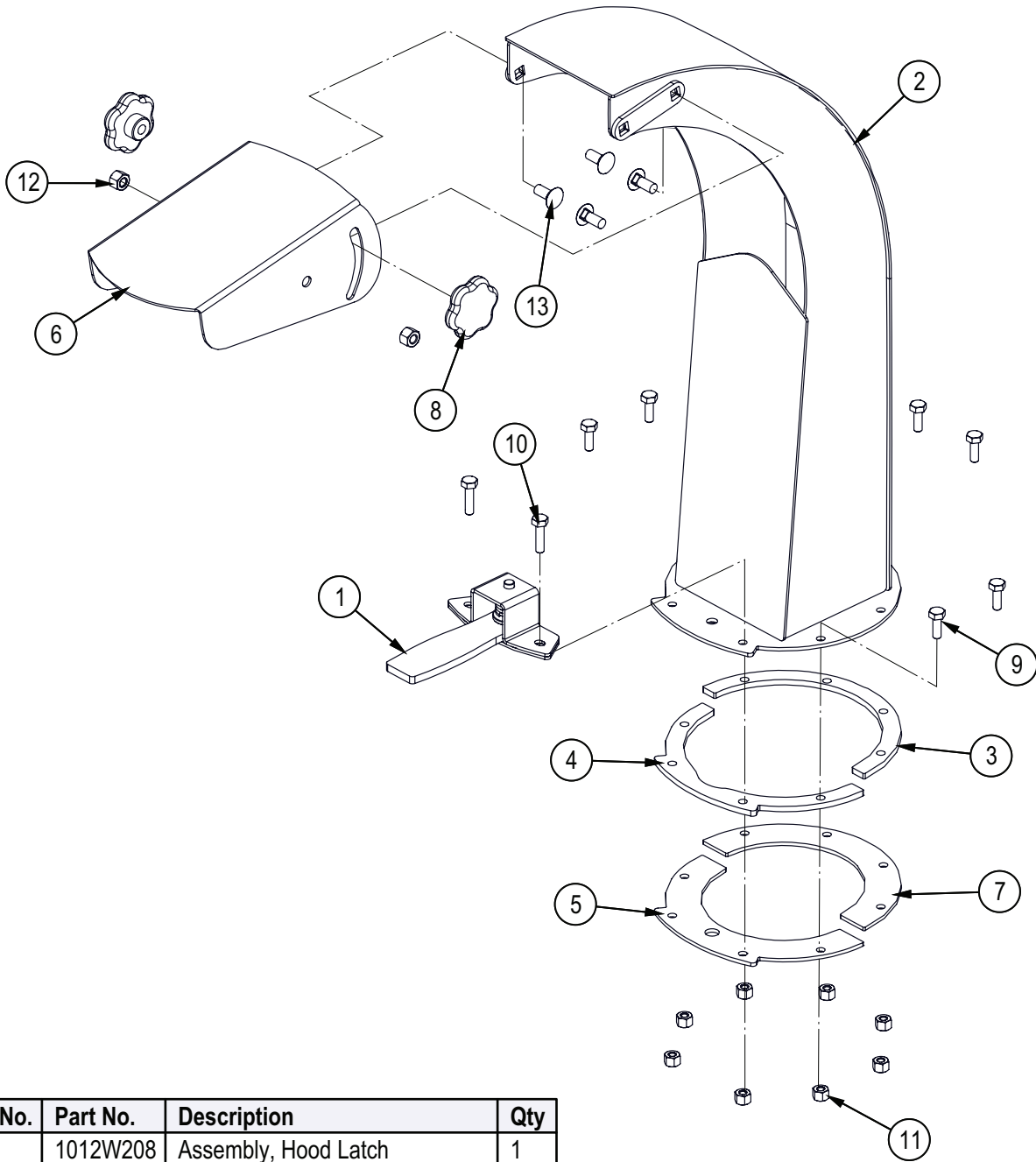
Item No.	Part No.	Description	Qty
15	Z44402	PTO Shaft, Series B4 x 32.402"	1
16	Z46534	Key, 1/4" x 1/4" x 1-1/4"	1
17	Z46544	Key, 5/16" x 5/16" x 1-1/4"	1
18	Z71107	Hex Bolt, 1/4NC x 3/4"	4
19	Z71120	Hex Bolt, 1/4NC x 2"	2
20	Z71220	Hex Bolt, 5/16NC x 2"	3
21	Z71310	Hex Bolt, 3/8NC x 1"	1
22	Z71617	Hex Bolt, 5/8NC x 1-3/4"	4
23	Z72211	Hex Lock Nut, 1/4NC	4
24	Z72221	Hex Lock Nut, 5/16NC	1
25	Z72261	Hex Lock Nut, 5/8NC	5
26	Z76121	Flange Bolt, 5/16NC x 3/4"	3
27	Z76521	Eye Bolt, 5/16NC x 4"	1

**Rotor Detail**



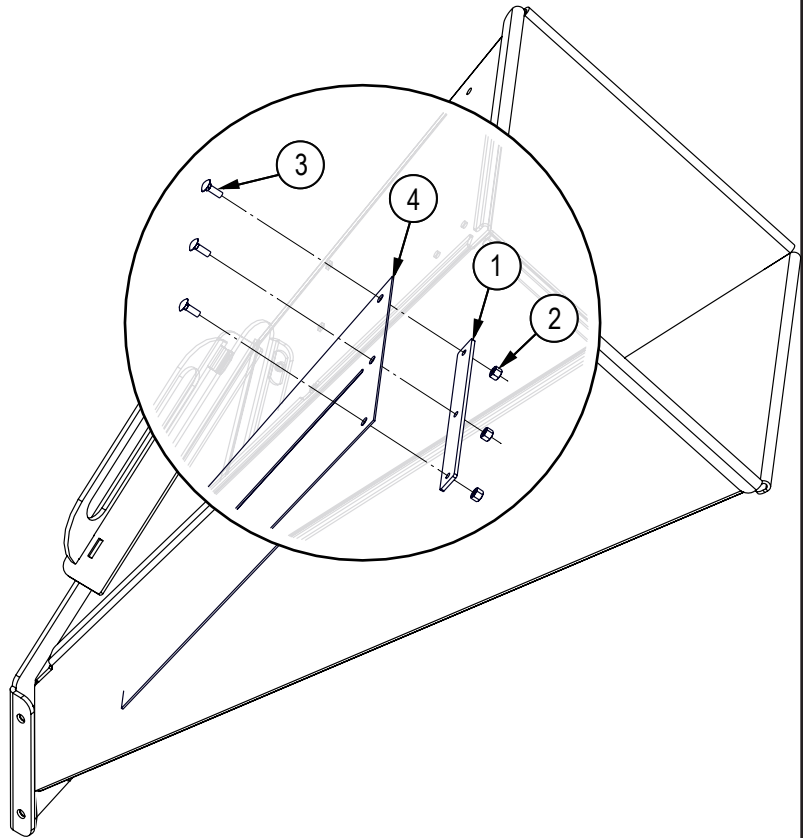
Item No.	Part No.	Description	Qty
1	1056M108	Knife, Shredder	27
2	1056M115	Spacer, Shredder .580	24
3	1056M303	Knife, 3" Rotor	2
4	1056M626	Retainer Rod Head	3
5	1056W103	Rotor	1
6	1056W614	Hammer Retainer Pin	3
7	Z71372G8	Hex Bolt, 3/8NF x 5/8" G8	4
8	Z72231	Hex Lock Nut, 3/8NC	3

**Discharge Chute Assembly**



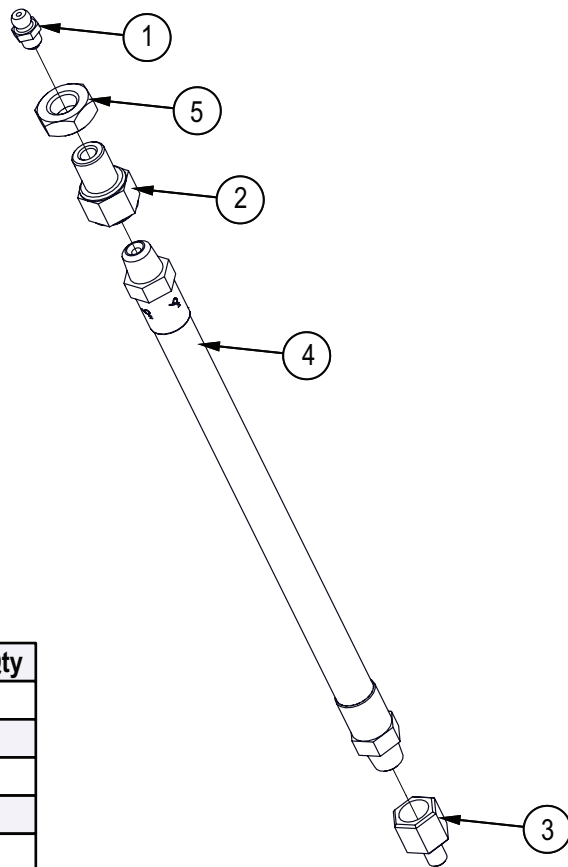
Item No.	Part No.	Description	Qty
1	1012W208	Assembly, Hood Latch	1
2	1056W307	Discharge Chute	1
3	1056L327	Ring	1
4	1056L329	Plate, Spacer Ring	1
5	1056L330	Plate, Hood Cature	1
6	1056L333	Deflector, Discharge Chute	1
7	1056L334	Ring	1
8	Z19313	Hand Knob, 5/16NC Female Stud	2
9	Z71107	Hex Bolt, 1/4NC x 3/4"	6
10	Z71110	Hex Bolt, 1/4NC x 1"	2
11	Z72211	Hex Lock Nut, 1/4NC	8
12	Z72221	Hex Lock Nut, 5/16NC	2
13	Z76221	Carriage Bolt, 5/16NC x 3/4"	4

**Hopper Flap Detail**



Item No.	Part No.	Description	Qty
1	1018L994	Chipper Chute Flap Clamp	1
2	Z72211	Hex Lock Nut, 1/4NC	3
3	Z76211	Carriage Bolt, 1/4NC x 3/4"	3
4	1056S604	Flap, Hopper	1

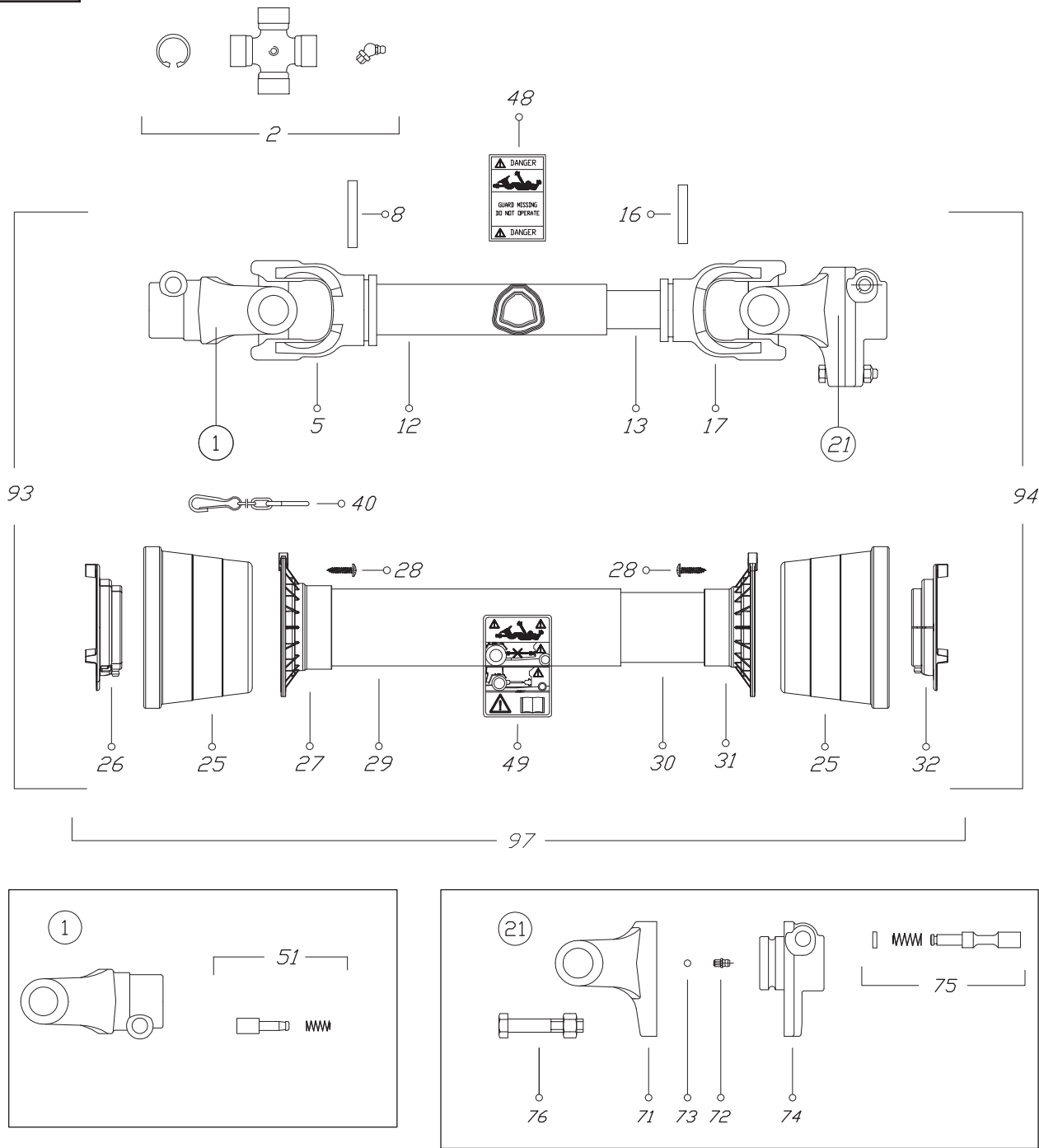
**Grease Whip Detail**



Item No.	Part No.	Description	Qty
1	Z29202	Grease Fitting, 1/4NF	1
2	Z29206	Bulkhead, FP x FP 0402 x 7/16NC	1
3	Z29303	Grease Fitting, FP02 x 1/4NF	1
4	Z29304	1/4" Grease Whip, MP x MP 0202 x 9"	1
5	Z72341	Jam Nut, 7/16NC	1



**PTO Shaft**



**PTO Shaft – P/N Z44402**

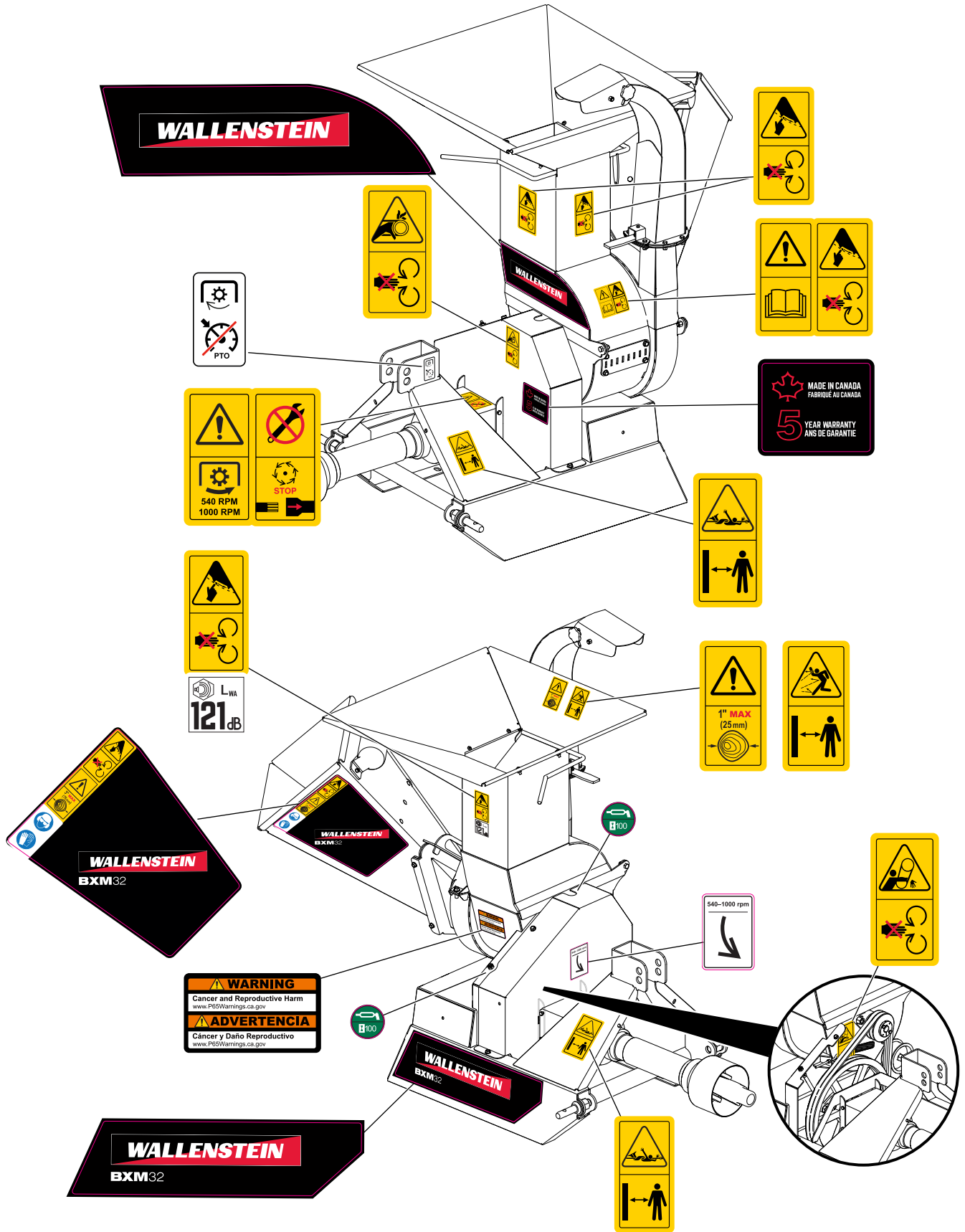
Item.	Description	Qty.	Part Number
1	YOKE	1	0800403
2	CROSS JOURNAL ASS.	2	08204
5	OUTER TUBE YOKE	1	08004021
8	FLEXIBLE PIN	1	098700860
12	CM. 100 CARDAN TUBE(*)	1	09881433100
13	CM. 100 CARDAN TUBE(*)	1	09881364100
16	FLEXIBLE PIN	1	098700855
17	INNER TUBE YOKE	1	08004011
21	SHEAR BOLT YOKE	1	08805A604633
25	CONE SHIELD BELL 03-04	2	021904C001
26	OUTER BEARING 03-04	1	025504C001
27	OUTER BASE CONE 03-04	1	025404C001
28	SCREW	6	0998052242
29	OUTER SAFETY TUBE	1	0988966NB4061
30	INNER SAFETY TUBE	1	0988961NB4061

Item.	Description	Qty.	Part Number
31	INNER BASE CONE 03-04	1	025404C002
32	INNER BEARING 03-04	1	025504C002
40	CHAIN	1	0252000001
48	LABEL DANGER OUTER DRIVE TUBE	1	09872006
49	EXTERNAL SHIELD LABEL	1	09872003
51	COMPLETE PUSH BUTTON	1	0986014047
71	YOKE FOR LB4	1	08896904
72	GREASE NIPPLE	1	0984010150
73	STEEL BALL	23	098680104
74	HUB	1	088964
75	PUSH PIN SET	1	0986014075
76	SHEARBOLT AND NUT M8 x 1.25 x 45 10.9	1	Z44902 (Package of 5)
93	OUTER HALF SHAFT	1	B4N061US2
94	INNER HALF SHAFT	1	B4N061US1098
97	SAFETY GUARD	1	083US04061

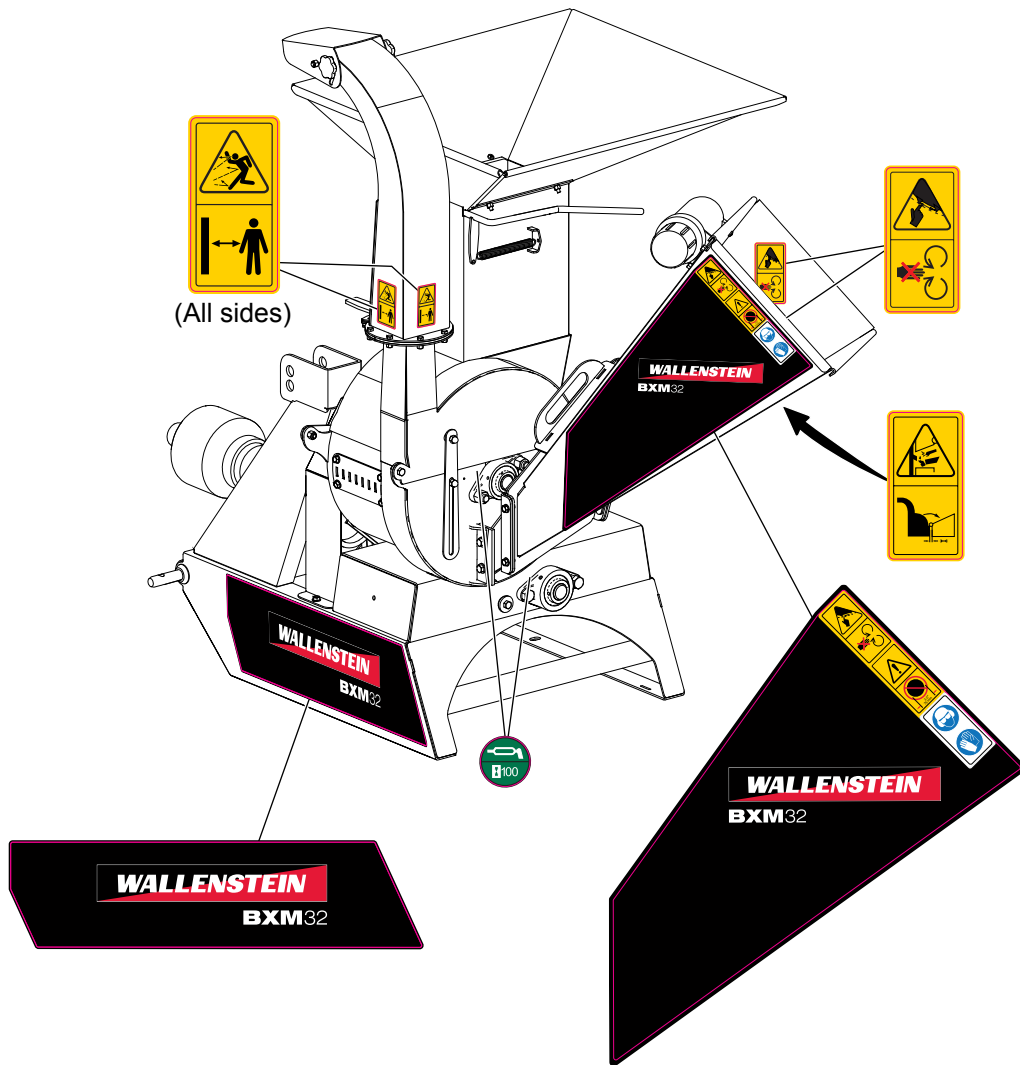
**Decal Layout**

**IMPORTANT!** If parts are replaced that have safety signs on them, new signs must be applied. Safety signs must always be replaced if they become damaged, are removed, or become illegible.

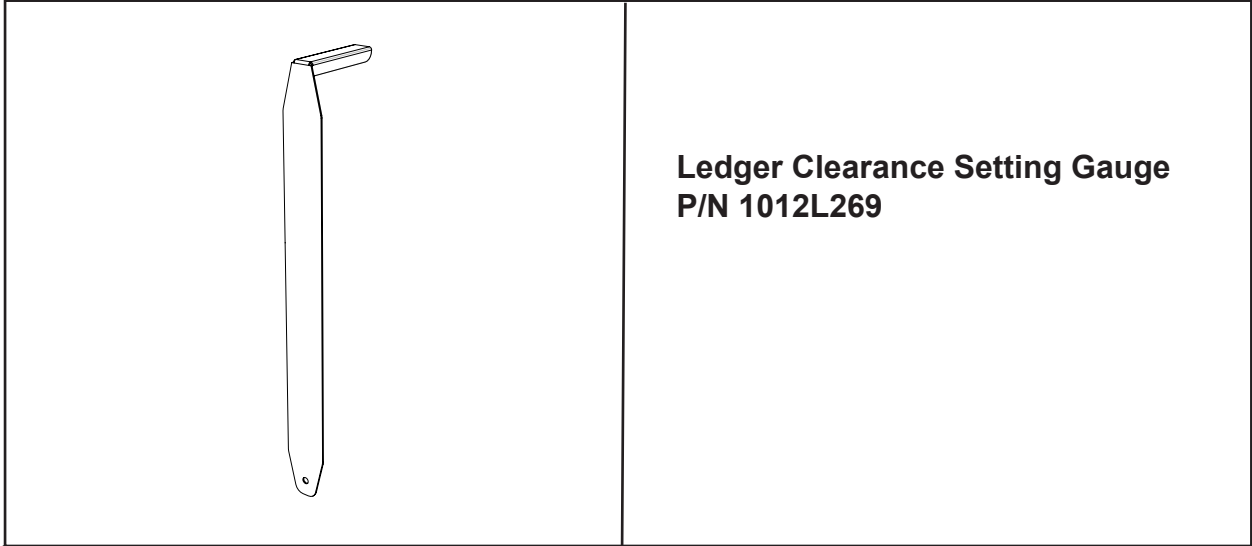
Safety signs are included in the product decal kit available from your authorized dealer. Decals are not available separately.



**Decal Layout**



**Accessories**



Call your dealer for pricing and availability


**Common Bolt Torque Values**

**Checking Bolt Torque**

The tables shown give correct torque values for various bolts and capscrews. Tighten all bolts to the torque values specified in the table, unless indicated otherwise. Check tightness of bolts periodically.

**IMPORTANT!** If replacing hardware, use fasteners of the same grade.

**IMPORTANT!** Torque figures indicated in the table are for non-greased or non-oiled threads. Do not grease or oil threads unless indicated otherwise. When using a thread locker, increase torque values by 5%.

 **NOTE:** Bolt grades are identified by their head markings.

Imperial Bolt Torque Specifications						
Bolt Diameter	Torque Value					
	SAE Gr. 2		SAE Gr. 5		SAE Gr. 8	
	lbf·ft	N·m	lbf·ft	N·m	lbf·ft	N·m
1/4"	6	8	9	12	12	17
5/16"	10	13	19	25	27	36
3/8"	20	27	33	45	45	63
7/16"	30	41	53	72	75	100
1/2"	45	61	80	110	115	155
9/16"	60	95	115	155	165	220
5/8"	95	128	160	215	220	305
3/4"	165	225	290	390	400	540
7/8"	170	230	420	570	650	880
1"	225	345	630	850	970	1320



Metric Bolt Torque Specifications				
Bolt Diameter	Torque Value			
	Gr. 8.8		Gr. 10.9	
	lbf·ft	N·m	lbf·ft	N·m
M3	0.4	0.5	1.3	1.8
M4	2.2	3	3.3	4.5
M6	7	10	11	15
M8	18	25	26	35
M10	37	50	52	70
M12	66	90	92	125
M14	83	112	116	158
M16	166	225	229	310
M20	321	435	450	610
M30	1,103	1 495	1,550	2 100



## Hydraulic Fitting Torque Values

### Tightening Flare Type Tube Fittings

1. Check flare and flare seat for defects that might cause leakage.
2. Align tube with fitting before tightening.
3. Hand-tighten swivel nut until snug.
4. To prevent twisting the tube, use two wrenches. Place one wrench on the connector body and tighten the swivel nut with the second. Torque to values shown.

If a torque wrench is not available, use the FFFT (Flats From Finger Tight) method.

Hydraulic Fitting Torque							
Tube Size OD	Hex Size Across Flats	Torque value		Flats From Finger Tight			
		Inches	Inches	lbf•ft	N•m	Flats	Turns
3/16	7/16			6	8	2	1/6
1/4	9/16			11–12	15–17	2	1/6
5/16	5/8			14–16	19–22	2	1/6
3/8	11/16			20–22	27–30	1-1/4	1/6
1/2	7/8			44–48	59–65	1	1/6
5/8	1			50–58	68–79	1	1/6
3/4	1-1/4			79–88	107–119	1	1/8
1	1-5/8			117–125	158–170	1	1/8

Values shown are for non-lubricated connections.