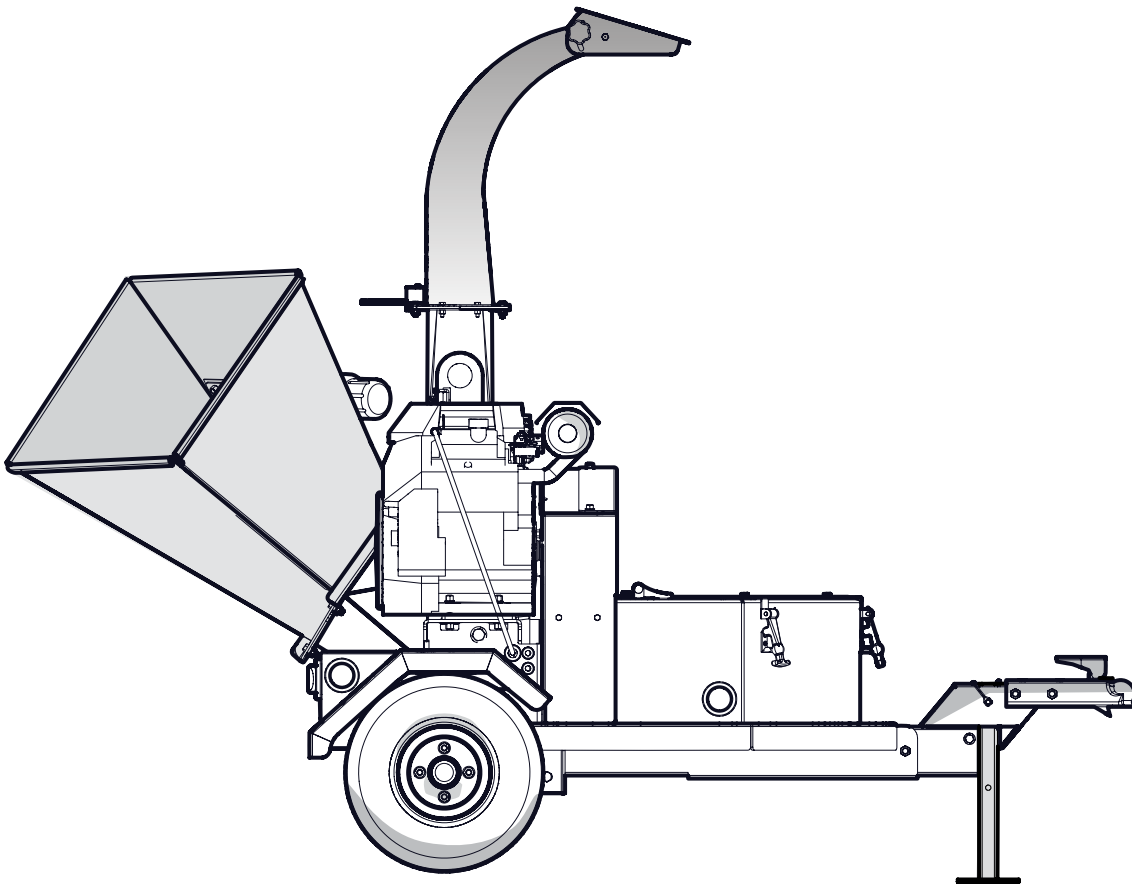


PARTS MANUAL

Serial Number 2E9US1115FS040137 to SN 2E9US1113NS040216

BXT4224 CHIPPER



Foreword

This Wallenstein parts manual is prepared to assist customers in ordering quality OEM replacement parts.

Regular maintenance combined with replacing old, worn or broken parts with the correct OEM parts is essential in prolonging the life of your Wallenstein product. Refer to this manual to identify replacement parts.

To order parts, contact your Wallenstein dealer or distributor. Have the product model and serial number handy.

If your dealer is no longer available, please go to our website: <http://wallensteinequipment.com> and click on the [Dealer Locator](#) to find the nearest dealer.

All information contained in this parts manual is current as per the revision date at the bottom of the page. Wallenstein reserves the right to change product specifications at any time without notice.

If your product specifications differ from those contained in this manual, contact Wallenstein for current information.

Reproduction of information in this parts manual is prohibited without prior written permission from Wallenstein Equipment Inc.

Wallenstein Equipment Inc. • © 2019

WARNING!

Refer to the operators manual for safe operation and maintenance.

Maintenance should be performed by trained personnel only.

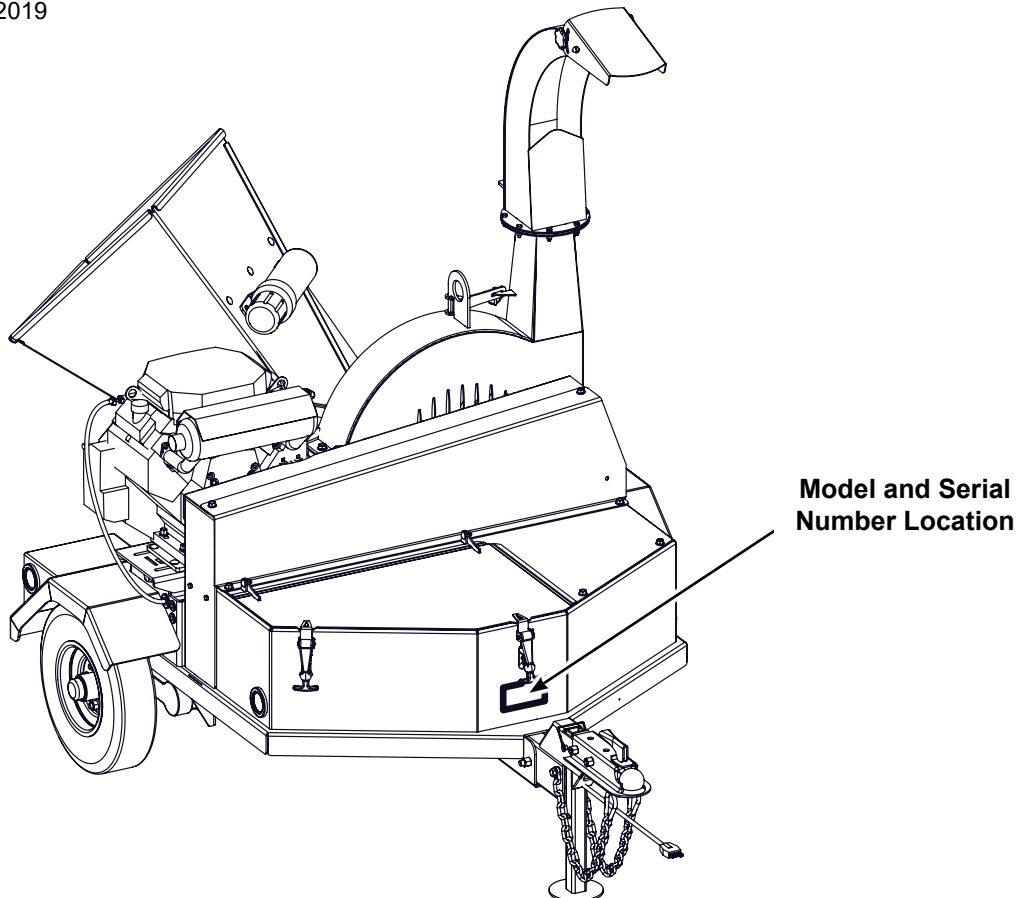
Serial Number Location

Always provide the model and serial number of your Wallenstein product when ordering parts or requesting service or other information. This information is found on the product information plate as shown below.

Record your product information here for future reference.

Model _____

Serial Number _____

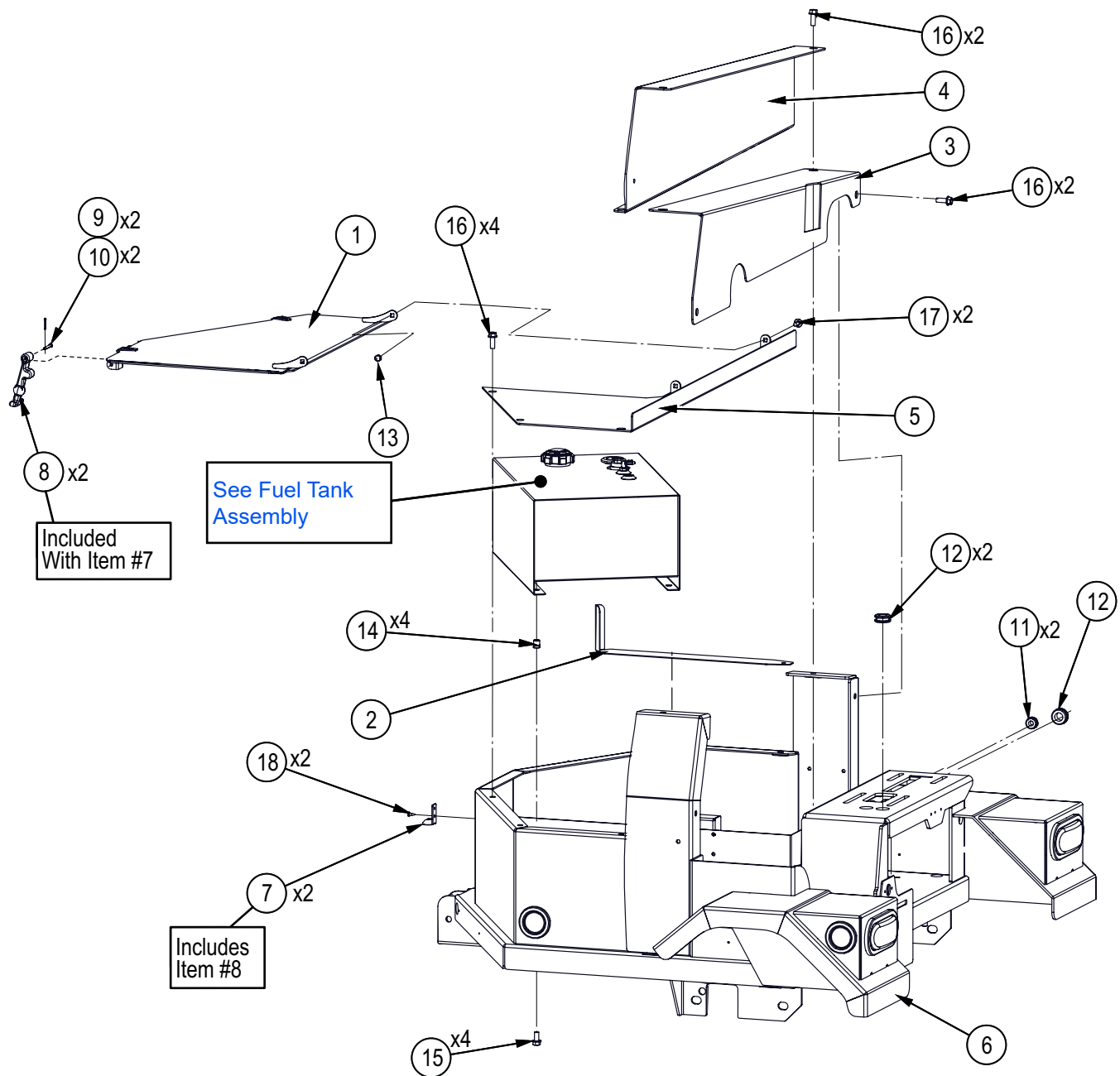


www.wallensteinequipment.com

Contents

| | |
|--|-----------|
| Main Frame and Guards | 4 |
| Blower Assembly | 5 |
| Discharge Chute Assembly..... | 6 |
| Wheels and Axle..... | 7 |
| Engine and Driveline | 8 |
| Fuel Tank Assembly..... | 9 |
| Rotor | 10 |
| Self-Feed Hopper | 11 |
| Hitch Assembly | 12 |
| Idler Hub | 13 |
| Battery and Harness | 14 |
| Decal Layout..... | 15 |
| Decal Layout..... | 16 |
| Common Bolt Torque Values | 18 |
| Hydraulic Fitting Torque Values | 19 |
| Wheel Lug Torque Values..... | 19 |

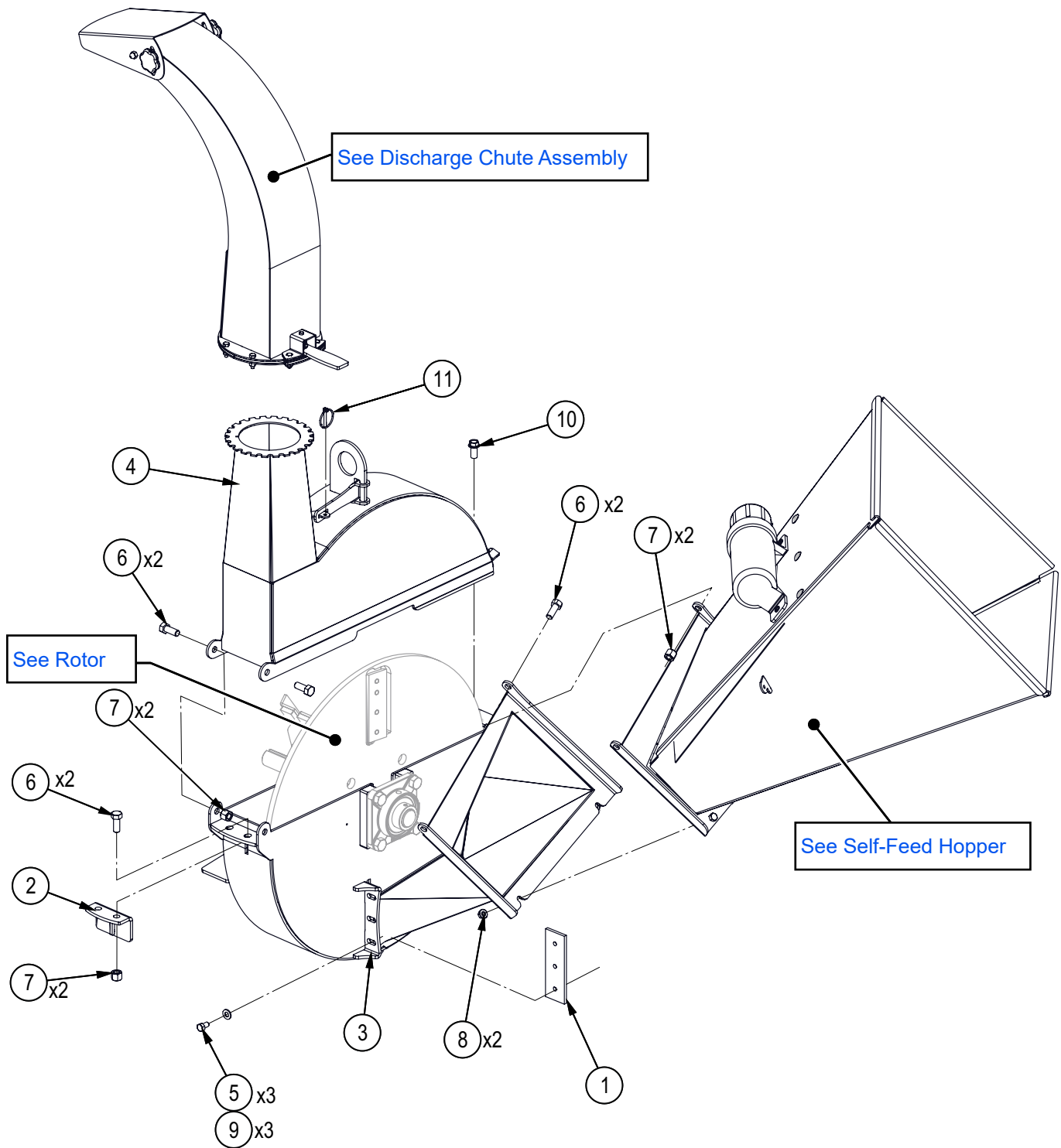
Main Frame and Guards



| Item No. | Part No. | Description | Qty |
|----------|----------|----------------------------|-----|
| 1 | 1052A104 | Toolbox Lid | 1 |
| 2 | 1012L269 | Gauge, Ledger Setting | 1 |
| 3 | 1052L122 | Rear Belt Guard | 1 |
| 4 | 1052L125 | Front Belt Guard | 1 |
| 5 | 1052W106 | Bay Cover | 1 |
| 6 | 1052W502 | Main Frame | 1 |
| 7 | Z18201 | Hood Fastener, Top Bracket | 2 |
| 8 | | Hood Fastener, Latch Strap | 2 |
| 9 | Z11300 | Clevis Pin 3/16 x 1-3/8 | 2 |
| 10 | Z12300 | Cotter Pin 3/32 X 3/4 | 2 |

| Item No. | Part No. | Description | Qty |
|----------|----------|--------------------------------|-----|
| 11 | Z62808 | Rubber Grommet, 7/16" x 1/4" | 2 |
| 12 | Z62822 | Rubber Grommet, 3/4" x 1/4" | 3 |
| 13 | Z72914 | Acorn Nut, 5/16NC | 2 |
| 14 | Z72959 | Rivet Nut, 3/8NC x 150 | 4 |
| 15 | Z76133 | Flange Bolt, 3/8NC x 3/4" | 4 |
| 16 | Z76134 | Flange Bolt, 3/8NC x 1" | 8 |
| 17 | Z76221 | Carriage Bolt, 5/16NC x 3/4" | 2 |
| 18 | Z76711 | Self-tapping Screw, #10 x 1/2" | 4 |

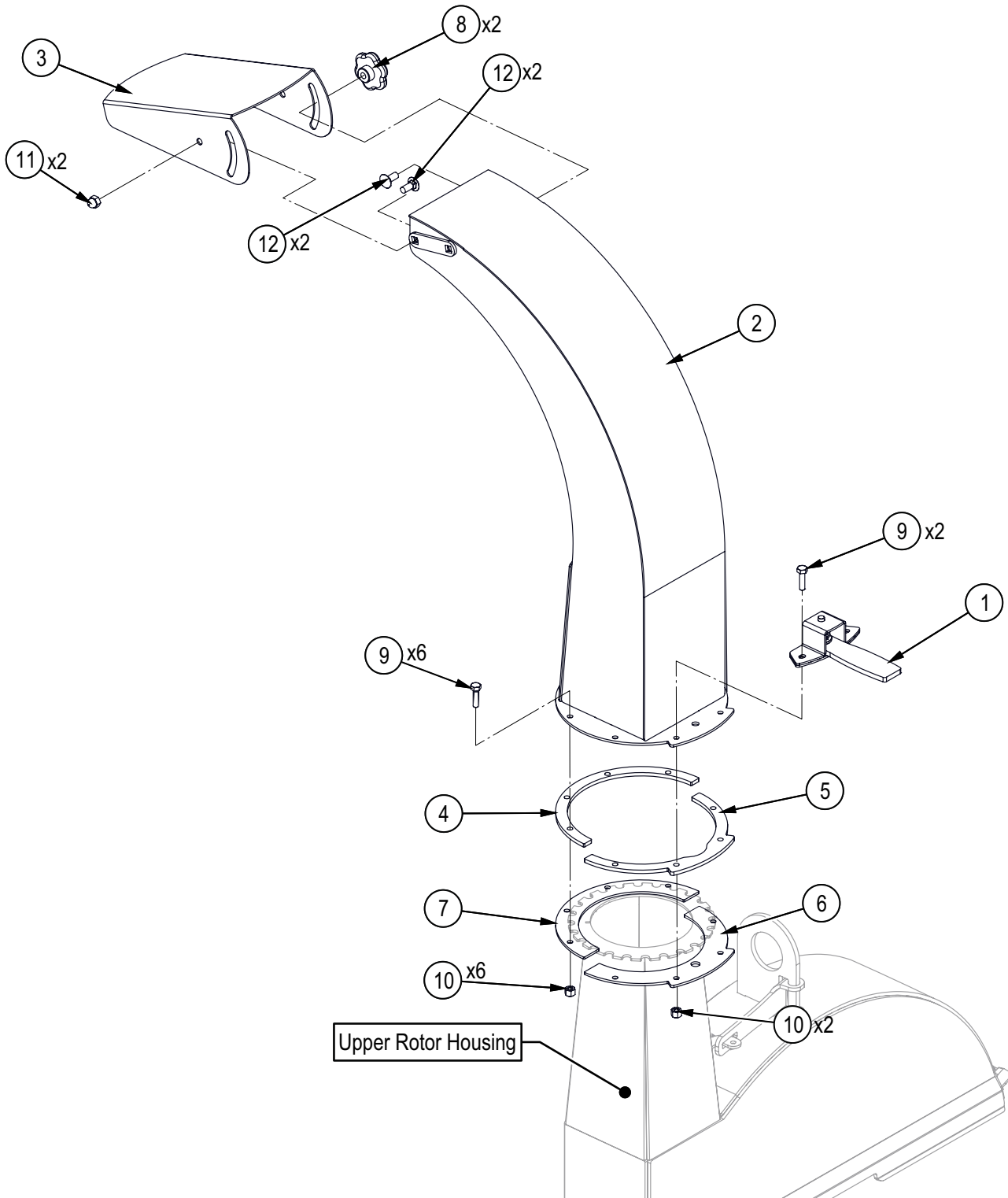
Blower Assembly



| Item | Part No. | Description | Qty |
|------|----------|---------------------------|-----|
| 1 | 1011M104 | Knife, 4" Ledger | 1 |
| 2 | 1011W104 | Twig Breaker | 1 |
| 3 | 1052W291 | Housing, Bottom Rotor | 1 |
| 4 | 1052W292 | Housing, Upper Rotor | 1 |
| 5 | Z71372G8 | Hex Bolt, 3/8NF x 5/8" G8 | 3 |
| 6 | Z71512 | Hex Bolt, 1/2NC x 1-1/4" | 6 |

| Item | Part No. | Description | Qty |
|------|----------|--------------------------------|-----|
| 7 | Z72251 | Hex Lock Nut, 1/2NC | 6 |
| 8 | Z72531 | Serrated Flange Locknut, 3/8NC | 2 |
| 9 | Z73131 | SAE Washer, 3/8" | 3 |
| 10 | Z76153 | Flange Bolt, 1/2NC x 1" | 1 |
| 11 | Z12110 | Lynch Pin, 3/16" | 1 |

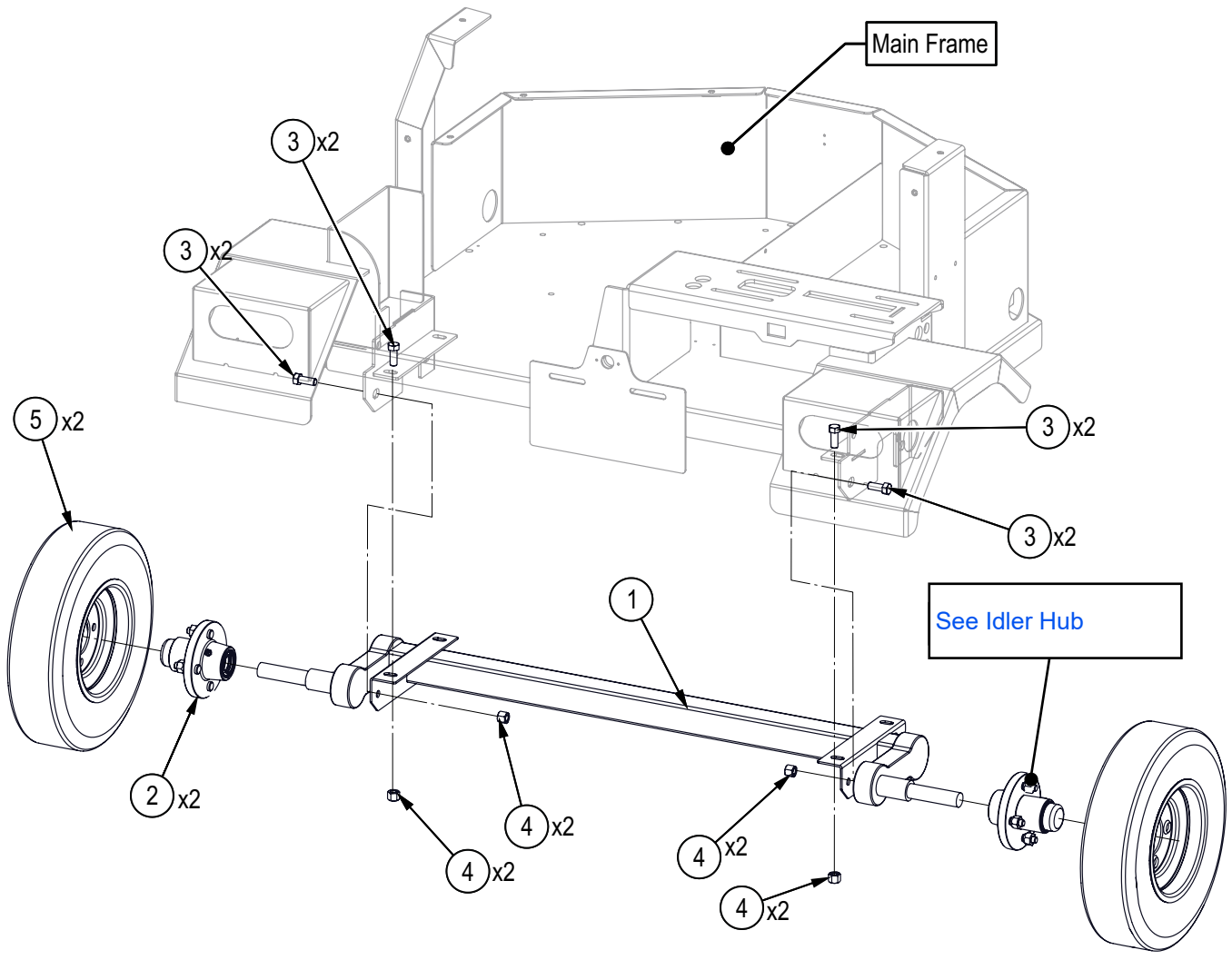
Discharge Chute Assembly



| Item | Part No. | Description | Qty |
|------|----------|----------------------------|-----|
| 1 | 1012W208 | Assembly, Hood Latch | 1 |
| 2 | 1016W007 | Discharge Chute | 1 |
| 3 | 1016L033 | Deflector, Discharge Chute | 1 |
| 4 | 1016L027 | Plate, Spacer Ring | 1 |
| 5 | 1016L029 | Plate, Spacer Ring | 1 |
| 6 | 1016L030 | Plate, Hood Capture | 1 |
| 7 | 1016L034 | Plate, Hood Capture | 1 |

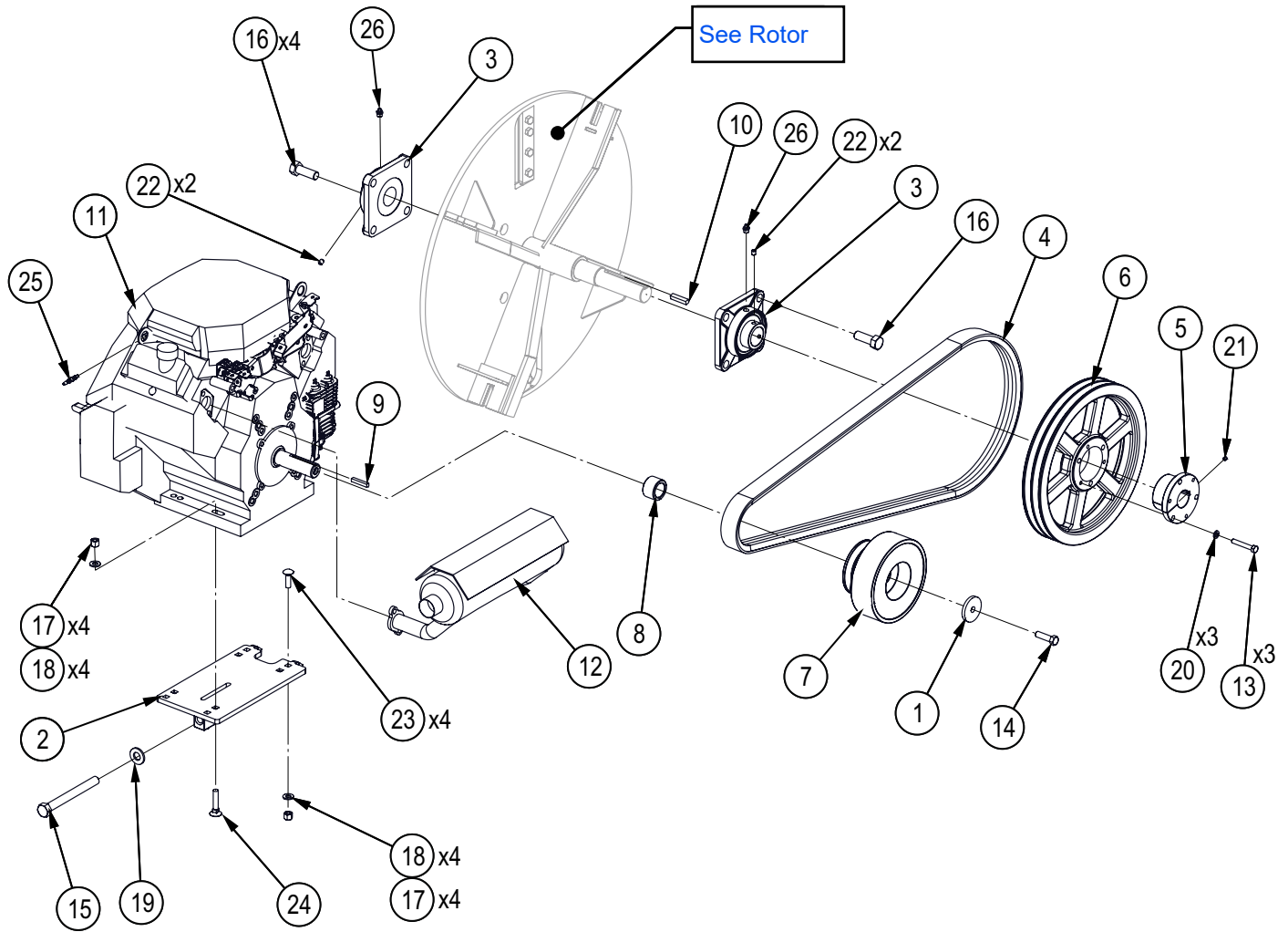
| Item | Part No. | Description | Qty |
|------|----------|-------------------------------|-----|
| 8 | Z19313 | Hand Knob, 5/16NC Female Stud | 2 |
| 9 | Z71110 | Hex Bolt, 1/4NC x 1" | 8 |
| 10 | Z72211 | Hex Lock Nut, 1/4NC | 8 |
| 11 | Z72914 | Acorn Nut, 5/16NC | 2 |
| 12 | Z76221 | Carriage Bolt, 5/16NC x 3/4" | 4 |

Wheels and Axle



| Item | Part No. | Description | Qty |
|------|----------|---|-----|
| 1 | Z91120 | #9 Full Flex Axle, 1000lbs x 52" HF Axle Only | 1 |
| 2 | Z91206 | Idler Hub Assy, 1000lbs x 4on4" x 1-1/16" | 2 |
| 3 | Z71512 | Hex Bolt, 1/2NC x 1-1/4" | 8 |
| 4 | Z72251 | Hex Lock Nut, 1/2NC | 8 |
| 5 | Z91301 | 4.80-8 LRB SportTrail 4on4" | 2 |

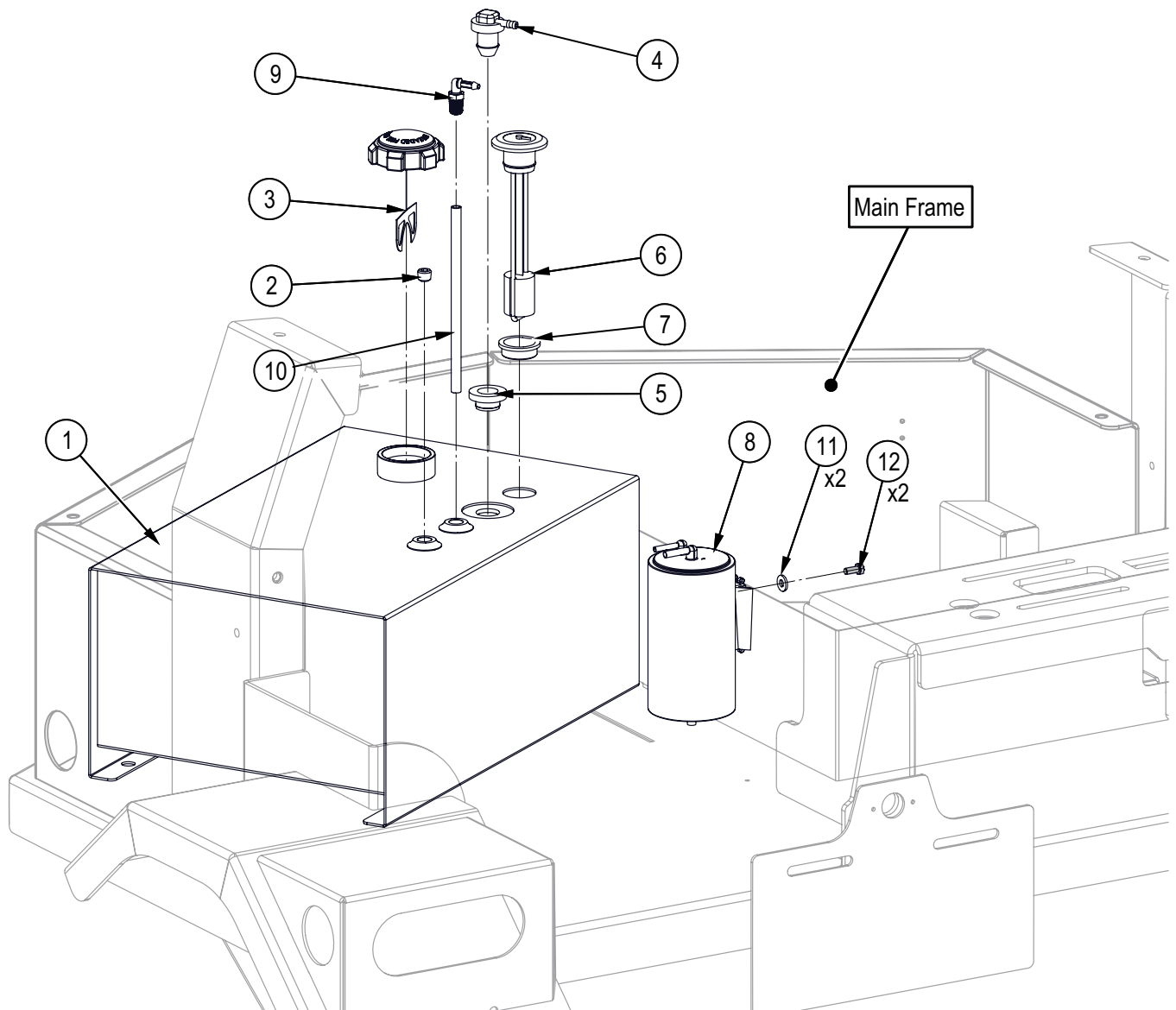
Engine and Driveline



| Item | Part No. | Description | Qty |
|------|----------|-----------------------------------|-----|
| 1 | 1052L503 | Washer, Clutch Trap x 7/16" | 1 |
| 2 | 1052W104 | Engine Adjustment Plate | 1 |
| 3 | Z25204 | 4-Bolt Flange Bearing, UCF208-24 | 2 |
| 4 | Z41259 | Belt, Double "B" x 77" | 1 |
| 5 | Z41501 | Hub, SK x 1-3/8" | 1 |
| 6 | Z41702 | Double Sheave, 2B124 x SK | 1 |
| 7 | Z41902 | Centrifugal Clutch, 2B39 x 1-1/8" | 1 |
| 8 | Z46353 | Spacer, 1-1/8" ID x 1.065" | 1 |
| 9 | Z46532 | Key, 1/4" x 1/4" x 1-1/2" | 1 |
| 10 | Z46543 | Key, 5/16" x 5/16" x 1-1/2" | 1 |
| 11 | Z47168 | Honda GX690RHTXA, Electric | 1 |
| 12 | Z47169 | Aftermarket Muffler, GX690 | 1 |
| 13 | Z71220 | Hex Bolt, 5/16NC x 2" | 3 |
| 14 | Z71472 | Hex Bolt, 7/16NF x 1-1/2" | 1 |

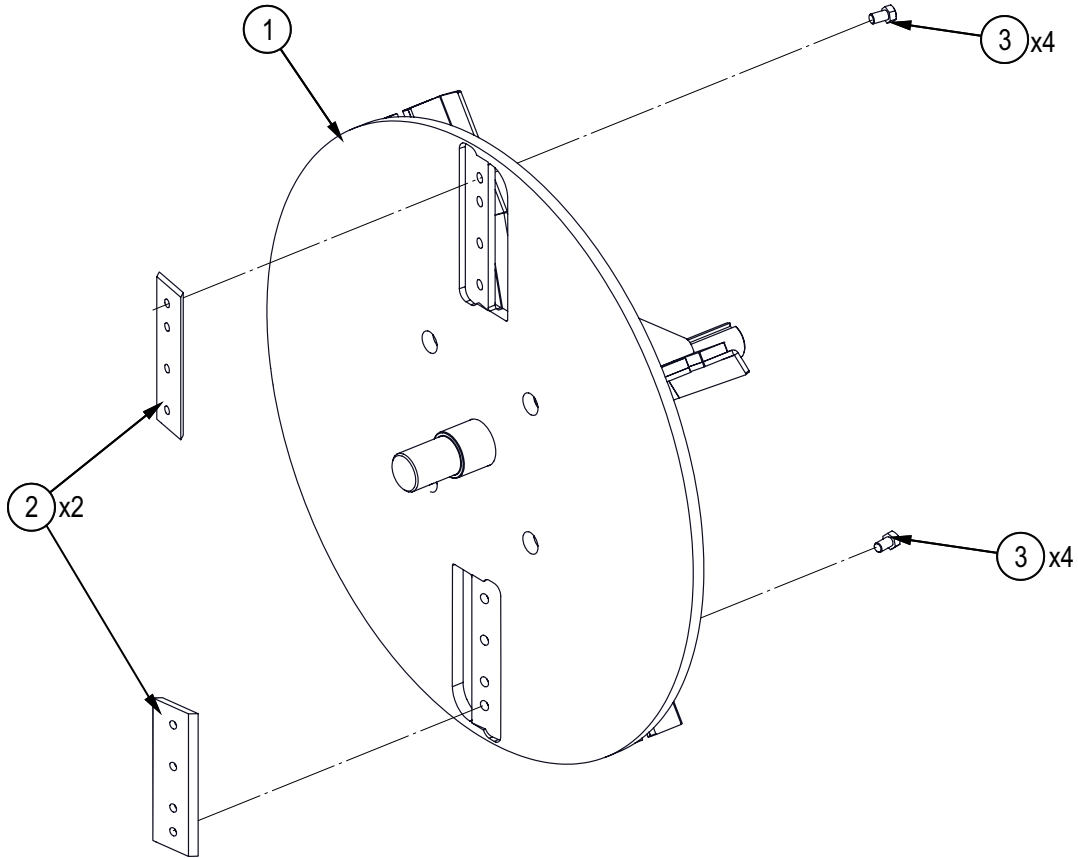
| Item | Part No. | Description | Qty |
|------|----------|-------------------------------|-----|
| 15 | Z71660 | Hex Bolt, 5/8NC x 6" | 1 |
| 16 | Z71672G8 | Hex Bolt, 5/8NF x 1-3/4" G8 | 8 |
| 17 | Z72231 | Hex Lock Nut, 3/8NC | 8 |
| 18 | Z73131 | SAE Washer, 3/8" | 8 |
| 19 | Z73161 | SAE Washer, 5/8" | 1 |
| 20 | Z73321 | Split Lock Washer, 5/16" | 3 |
| 21 | Z74111 | Set Screw, 1/4NC x 1/4" | 1 |
| 22 | Z74122 | Set Screw, 5/16NF x 3/8" | 4 |
| 23 | Z76232 | Carriage Bolt, 3/8NC x 1-1/4" | 4 |
| 24 | Z76632 | Plow Bolt, 3/8NC x 2" | 4 |
| 25 | Z93314 | Plastic Reducer, HB x HB 0403 | 1 |
| 26 | Z29201 | Grease Fitting, MP02 | 2 |

Fuel Tank Assembly



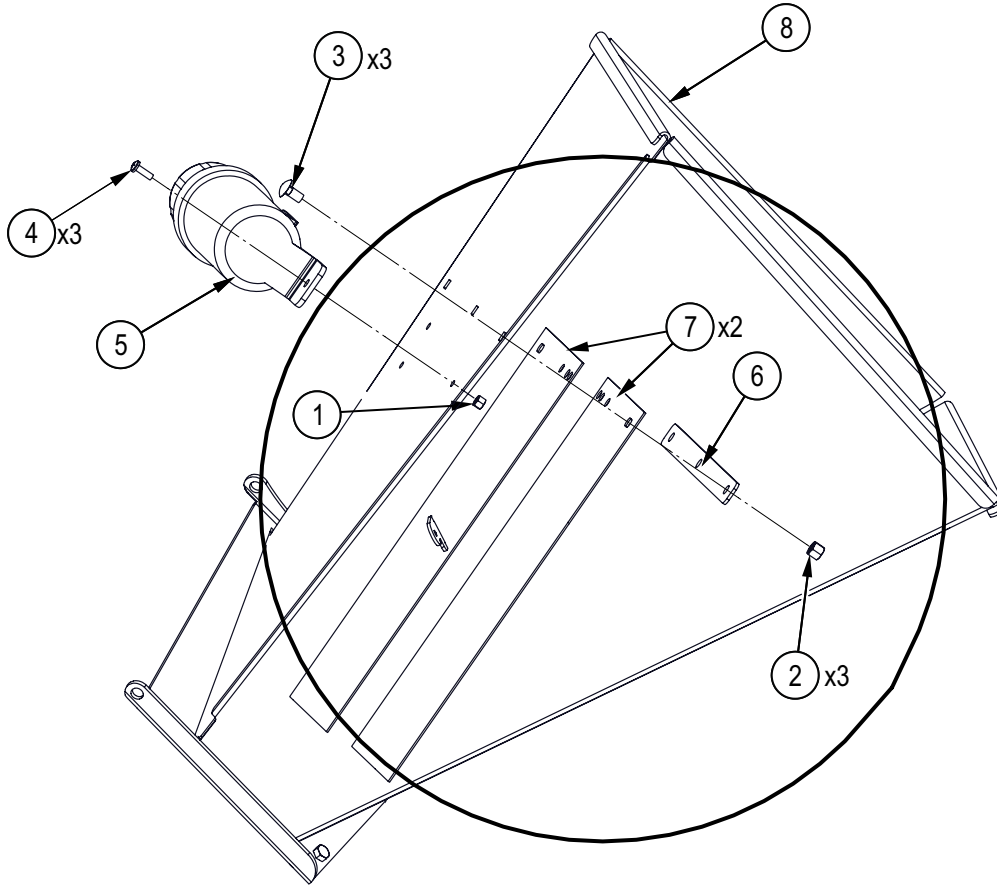
| Item | Part No. | Description | Qty |
|------|----------|--|-----|
| 1 | 1052W501 | Fuel Tank, Trailer Chippers | 1 |
| 2 | Z51194 | Socket Plug, MP 04 | 1 |
| 3 | Z93108 | EPA Ratchet Fuel Cap, Unleaded Fuel x Unvented with Tether | 1 |
| 4 | Z93110 | EPA Remote Vent, HB04 | 1 |
| 5 | Z93111 | Vent Grommet For Z93110 | 1 |
| 6 | Z93113 | Fuel Gauge, Grommet Mount x 7" | 1 |
| 7 | Z93115 | Fuel Gauge Grommet for Z93113 | 1 |
| 8 | Z93309 | EPA Carbon Canister, 652cc | 1 |
| 9 | Z93312 | Plastic Elbow 90, MP x HB 0404 | 1 |
| 10 | 1052S501 | Fuel Pickup Tube | 1 |
| 11 | Z73111 | SAE Washer, 1/4" | 2 |
| 12 | Z77130 | Hex Bolt, M6x1.0 x 14mm | 2 |

Rotor



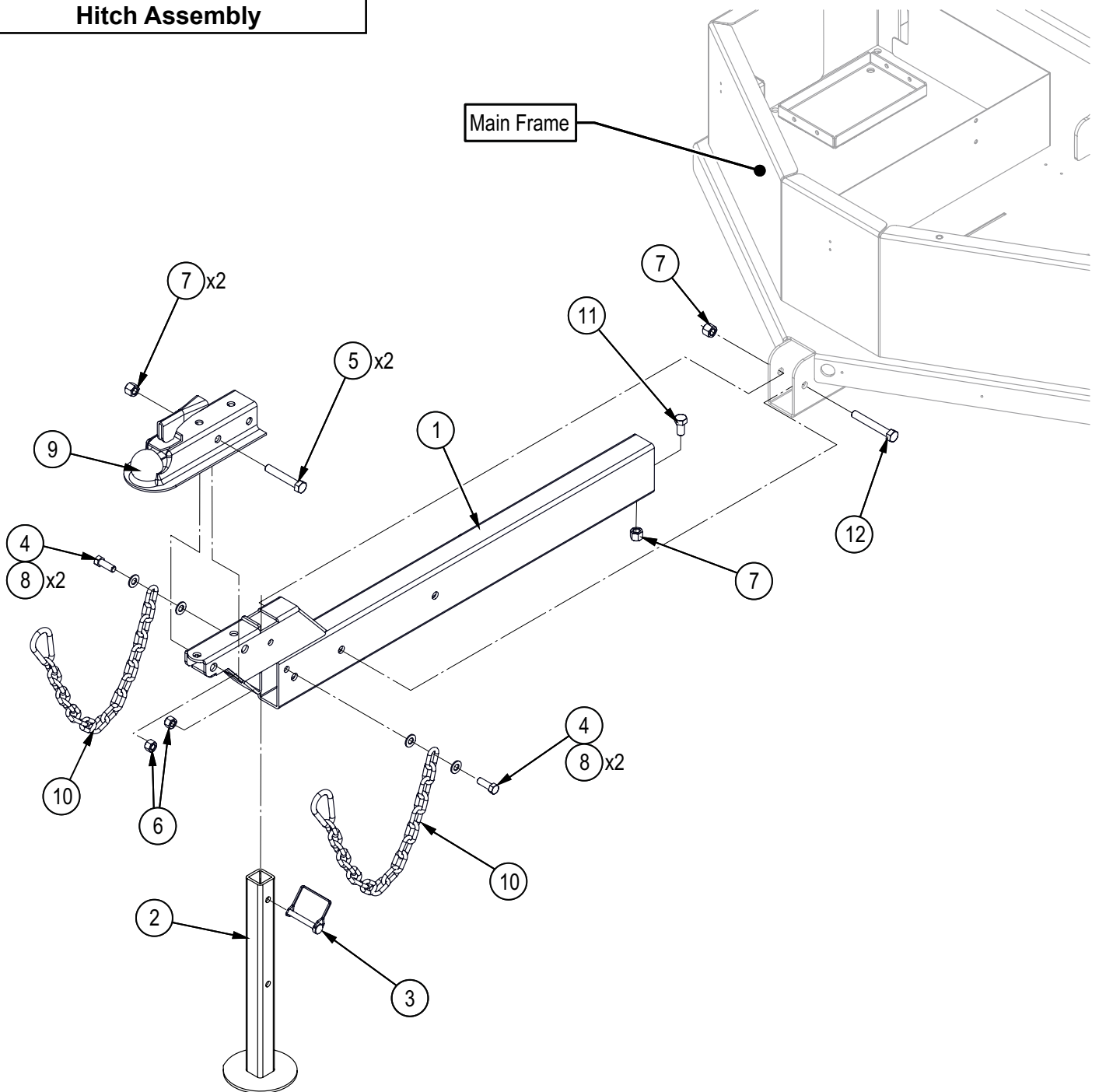
| Item | Part No. | Description | Qty |
|------|----------|---------------------------|-----|
| 1 | 1052W293 | Rotor | 1 |
| 2 | 1011M103 | Knife, 4" Rotor | 2 |
| 3 | Z71372G8 | Hex Bolt, 3/8NF x 5/8" G8 | 8 |

Self-Feed Hopper



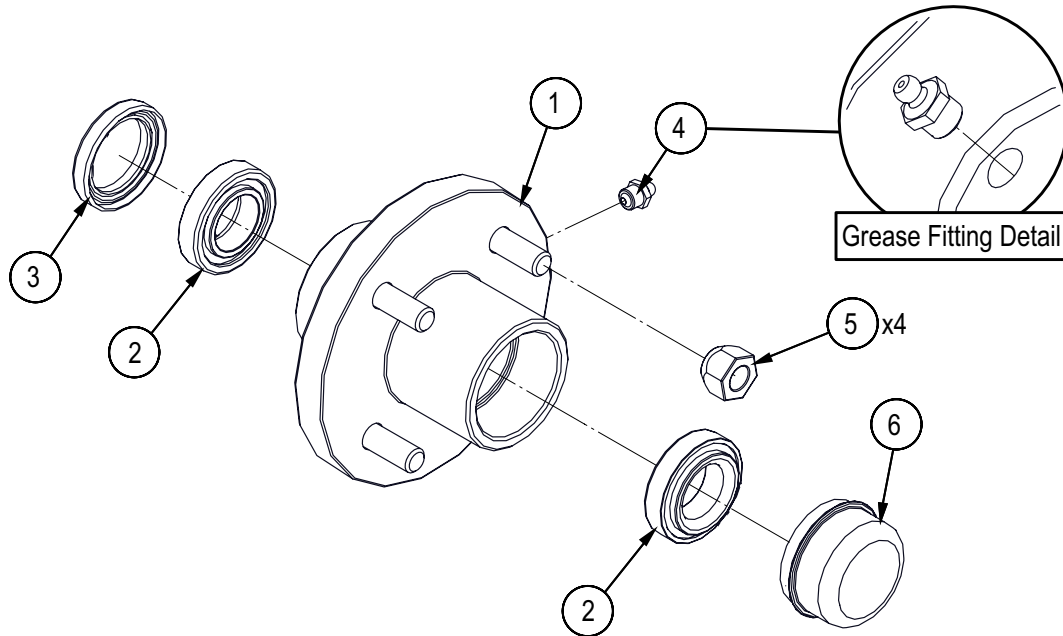
| Item | Part No. | Description | Qty |
|------|----------|-----------------------------|-----|
| 1 | Z72211 | Hex Lock Nut, 1/4NC | 3 |
| 2 | Z72231 | Hex Lock Nut, 3/8NC | 3 |
| 3 | Z76233 | Carriage Bolt, 3/8NC x 3/4" | 3 |
| 4 | Z78301 | Machine Screw, 1/4NC x 3/4" | 3 |
| 5 | Z96503 | Manual Tube, 3-1/2" Short | 1 |
| 6 | 1011L151 | Strap, Hopper Flap | 1 |
| 7 | 1011S103 | Flap, Hopper | 2 |
| 8 | 1011W108 | Infeed Hopper | 1 |

Hitch Assembly



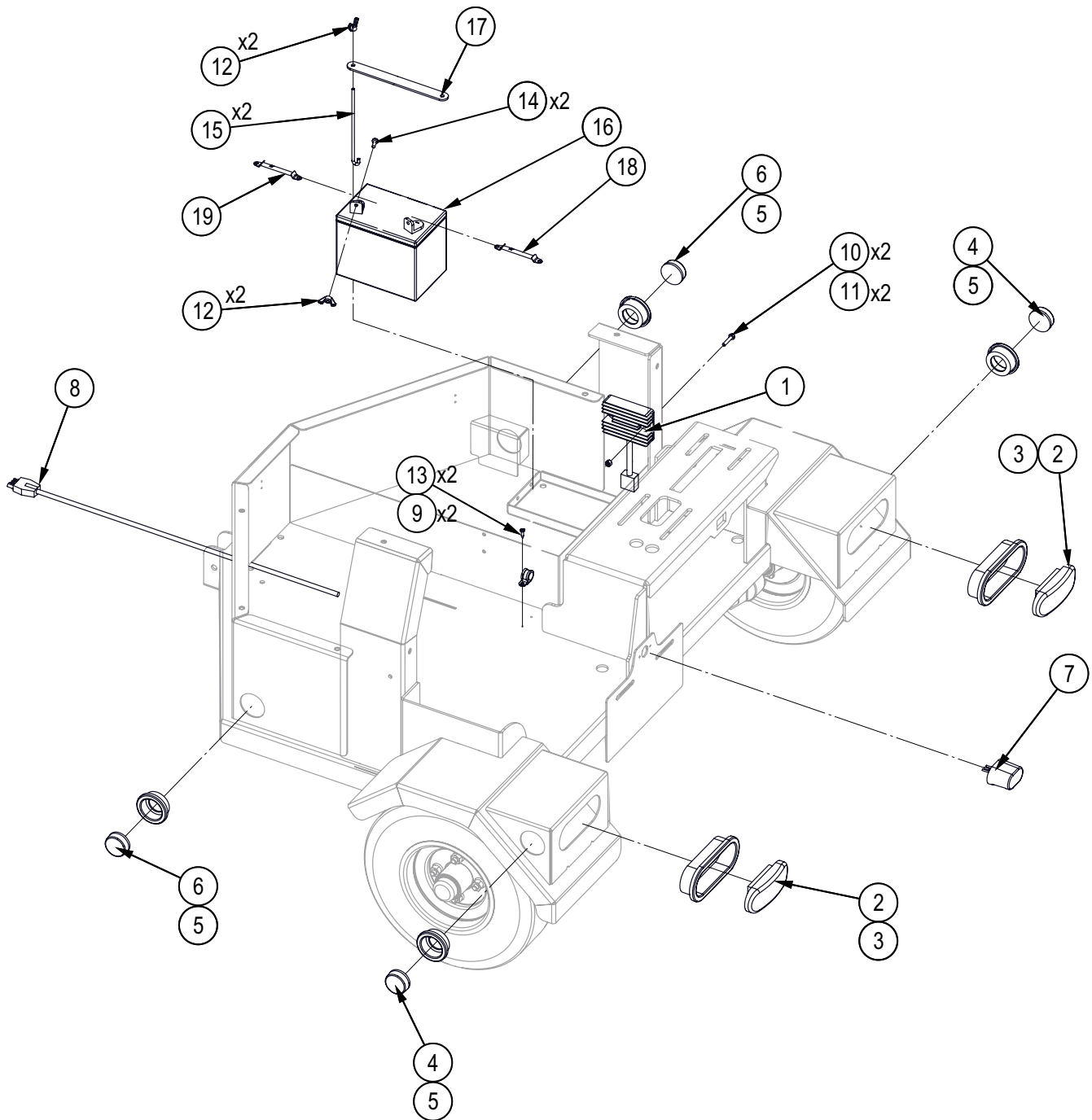
| Item | Part No. | Description | Qty |
|------|----------|---------------------------------------|-----|
| 1 | 1052W101 | Main Spine | 1 |
| 2 | 1052W102 | Jack Stand | 1 |
| 3 | Z12432 | Snap Lock Pin, 3/8" x 2-1/2" | 1 |
| 4 | Z71412 | Hex Bolt, 7/16NC x 1-1/4" | 2 |
| 5 | Z71530 | Hex Bolt, 1/2NC x 3" | 2 |
| 6 | Z72241 | Hex Lock Nut, 7/16NC | 2 |
| 7 | Z72251 | Hex Lock Nut, 1/2NC | 4 |
| 8 | Z73142 | SAE Washer, 7/16" | 4 |
| 9 | Z91614 | Hitch Coupler, 2" Ball x 2" x 3500lbs | 1 |
| 10 | Z92303 | Safety Chain, 1/4" x 2ft with Snap | 2 |
| 11 | Z71510 | Hex Bolt, 1/2NC x 1" | 1 |
| 12 | Z71535 | Hex Bolt, 1/2NC x 3-1/2" | 1 |

Idler Hub



| Item | Part No. | Description | Qty |
|------|----------|-------------------------------|-----|
| 1 | Z91201 | Hub, 1000lbs x 4on4 | 1 |
| 2 | Z23202 | Roller Bearing, L44649 L44610 | 2 |
| 3 | Z28302 | Double Lip Seal, 1-1/16" | 1 |
| 4 | Z29201 | Grease Fitting, MP02 | 1 |
| 5 | Z72931 | Lug Nut, 1/2NF | 4 |
| 6 | Z91801 | Dust Cap, 1.98 Bore | 1 |

Battery and Harness



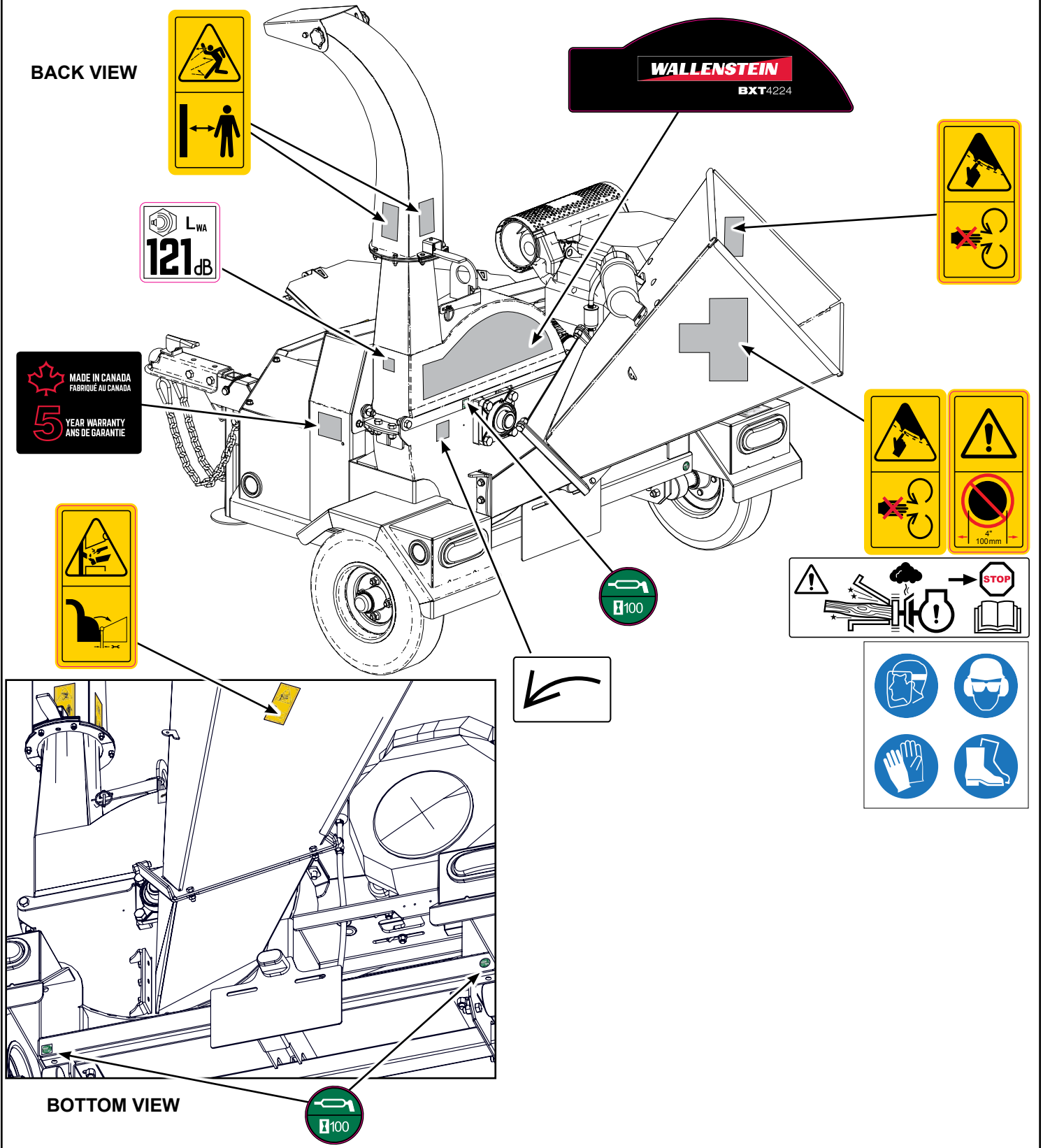
| Item | Part No. | Description | Qty |
|------|----------|-----------------------------|-----|
| 1 | Z47901 | Regulator Rectifier | 1 |
| 2 | Z61102 | STT Lamp, Oval | 2 |
| 3 | Z61103 | Grommet, Oval x Open Back | 2 |
| 4 | Z61201 | Marker Lamp, Round x Red | 2 |
| 5 | Z61202 | Grommet, Round x Open Back | 4 |
| 6 | Z61205 | Marker Lamp, Round x Amber | 2 |
| 7 | Z61301 | License Lamp, White | 1 |
| 8 | Z62127 | Harness, BXT62 Lights | 1 |
| 9 | Z62821 | Rubberized Wire Clamp, 5/8" | 2 |
| 10 | Z71112 | Hex Bolt, 1/4NC x 1-1/4" | 2 |

| Item | Part No. | Description | Qty |
|------|----------|--------------------------------|-----|
| 11 | Z72211 | Hex Lock Nut, 1/4NC | 2 |
| 12 | Z72921 | Wing Nut, 1/4NC | 4 |
| 13 | Z76712 | Self-tapping Screw, #10 x 3/4" | 2 |
| 14 | Z78301 | Machine Screw, 1/4NC x 3/4" | 2 |
| 15 | Z93202 | J-Hook, 1/4" x 7" | 2 |
| 16 | Z93204 | Battery, 325CCA | 1 |
| 17 | Z93207 | Hold-Down Strap, 1" x 8-1/2" | 1 |
| 18 | Z93210 | Battery Cable, Negative x 25" | 1 |
| 19 | Z93212 | Battery Cable, Positive x 28" | 1 |

Decal Layout

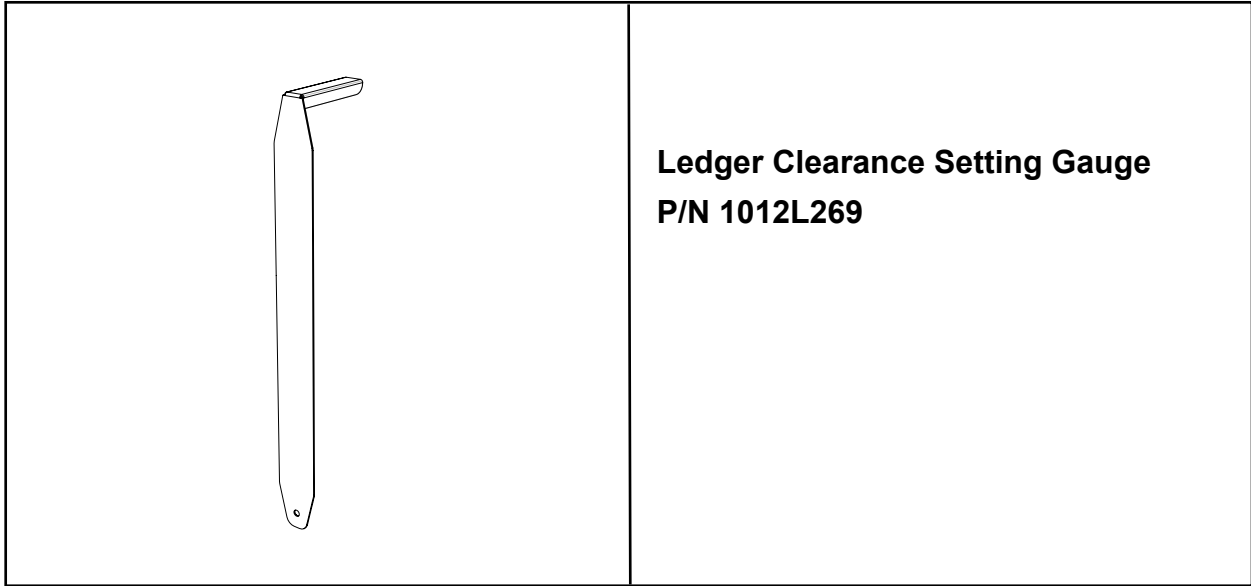
IMPORTANT! If parts are replaced that have safety signs on them, new signs must be applied. Safety signs must always be replaced if they become damaged, are removed, or become illegible.

Safety signs are included in the product decal kit available from your authorized dealer. Decals are not available separately.



Accessories

Call your dealer for pricing and availability




Common Bolt Torque Values

Checking Bolt Torque

The tables shown give correct torque values for various bolts and capscrews. Tighten all bolts to the torque values specified in the table, unless indicated otherwise. Check tightness of bolts periodically.

IMPORTANT! If replacing hardware, use fasteners of the same grade.

IMPORTANT! Torque figures indicated in the table are for non-greased or non-oiled threads. Do not grease or oil threads unless indicated otherwise. When using a thread locker, increase torque values by 5%.

 **NOTE:** Bolt grades are identified by their head markings.

Imperial Bolt Torque Specifications

| Bolt Diameter | Torque Value | | | | | |
|---------------|--------------|-----|-----------|-----|-----------|------|
| | SAE Gr. 2 | | SAE Gr. 5 | | SAE Gr. 8 | |
| | lbf•ft | N•m | lbf•ft | N•m | lbf•ft | N•m |
| 1/4" | 6 | 8 | 9 | 12 | 12 | 17 |
| 5/16" | 10 | 13 | 19 | 25 | 27 | 36 |
| 3/8" | 20 | 27 | 33 | 45 | 45 | 63 |
| 7/16" | 30 | 41 | 53 | 72 | 75 | 100 |
| 1/2" | 45 | 61 | 80 | 110 | 115 | 155 |
| 9/16" | 60 | 95 | 115 | 155 | 165 | 220 |
| 5/8" | 95 | 128 | 160 | 215 | 220 | 305 |
| 3/4" | 165 | 225 | 290 | 390 | 400 | 540 |
| 7/8" | 170 | 230 | 420 | 570 | 650 | 880 |
| 1" | 225 | 345 | 630 | 850 | 970 | 1320 |



SAE Gr. 2



SAE Gr. 5



SAE Gr. 8

Metric Bolt Torque Specifications

| Bolt Diameter | Torque Value | | | |
|---------------|--------------|-------|----------|-------|
| | Gr. 8.8 | | Gr. 10.9 | |
| | lbf•ft | N•m | lbf•ft | N•m |
| M3 | 0.4 | 0.5 | 1.3 | 1.8 |
| M4 | 2.2 | 3 | 3.3 | 4.5 |
| M6 | 7 | 10 | 11 | 15 |
| M8 | 18 | 25 | 26 | 35 |
| M10 | 37 | 50 | 52 | 70 |
| M12 | 66 | 90 | 92 | 125 |
| M14 | 83 | 112 | 116 | 158 |
| M16 | 166 | 225 | 229 | 310 |
| M20 | 321 | 435 | 450 | 610 |
| M30 | 1,103 | 1 495 | 1,550 | 2 100 |



8.8



10.9

Hydraulic Fitting Torque Values

Tightening Flare Type Tube Fittings

1. Check flare and flare seat for defects that might cause leakage.
2. Align tube with fitting before tightening.
3. Hand-tighten swivel nut until snug.
4. To prevent twisting the tube, use two wrenches. Place one wrench on the connector body and tighten the swivel nut with the second. Torque to values shown.

If a torque wrench is not available, use the FFFT (Flats From Finger Tight) method.

| Hydraulic Fitting Torque | | | | | |
|--------------------------|-----------------------|--------------|---------|-------------------------|-------|
| Tube Size OD | Hex Size Across Flats | Torque value | | Flats From Finger Tight | |
| | | lbf•ft | N•m | Flats | Turns |
| 3/16 | 7/16 | 6 | 8 | 2 | 1/6 |
| 1/4 | 9/16 | 11–12 | 15–17 | 2 | 1/6 |
| 5/16 | 5/8 | 14–16 | 19–22 | 2 | 1/6 |
| 3/8 | 11/16 | 20–22 | 27–30 | 1-1/4 | 1/6 |
| 1/2 | 7/8 | 44–48 | 59–65 | 1 | 1/6 |
| 5/8 | 1 | 50–58 | 68–79 | 1 | 1/6 |
| 3/4 | 1-1/4 | 79–88 | 107–119 | 1 | 1/8 |
| 1 | 1-5/8 | 117–125 | 158–170 | 1 | 1/8 |

Values shown are for non-lubricated connections.

Wheel Lug Torque Values

It is extremely important safety procedure to apply and maintain proper wheel mounting torque on your trailer axle. Torque wrenches are the best method to assure the proper amount of torque is being applied to a fastener.

Wheel lugs should be torqued before first road use and after each wheel removal. Check and re torque after the first 10 miles (16 km), 25 miles (40 km), and again at 50 miles (80 km). Check periodically thereafter.

NOTE: *Wheel lugs must be applied and maintained at the proper torque levels to prevent loose wheels, broken studs, and possible dangerous separation of wheels from your axle.*

- Start all lugs by hand to prevent cross threading.
- Tighten lugs in sequence, per wheel lug torque sequence chart.
- The tightening of the fasteners should be done in stages. Following the recommended sequence, tighten fasteners per wheel torque requirements chart.

| Wheel Lug Nut Torque | | | | |
|----------------------|---------------|------------------|------------------|--------------------|
| Wheel Size | Units | 1st Stage | 2nd Stage | 3rd Stage |
| 8" | lbf•ft N•m | 12–20 16–26 | 30–35 39–45.5 | 45–55 58.5–71.5 |
| 12" | lbf•ft N•m | 20–25 26–32.5 | 35–40 45.5–52 | 50–60 65–78 |
| 13" | lbf•ft N•m | 20–25 26–32.5 | 35–40 45.5–52 | 50–60 65–78 |
| 14" | lbf•ft N•m | 20–25 26–32.5 | 50–60 65–78 | 90–120 117–156 |
| 15" | lbf•ft N•m | 20–25 26–32.5 | 50–60 65–78 | 90–120 117–156 |
| 16" | lbf•ft N•m | 20–25 26–32.5 | 50–60 65–78 | 90–120 117–156 |

Wheel Lug Torque Pattern

