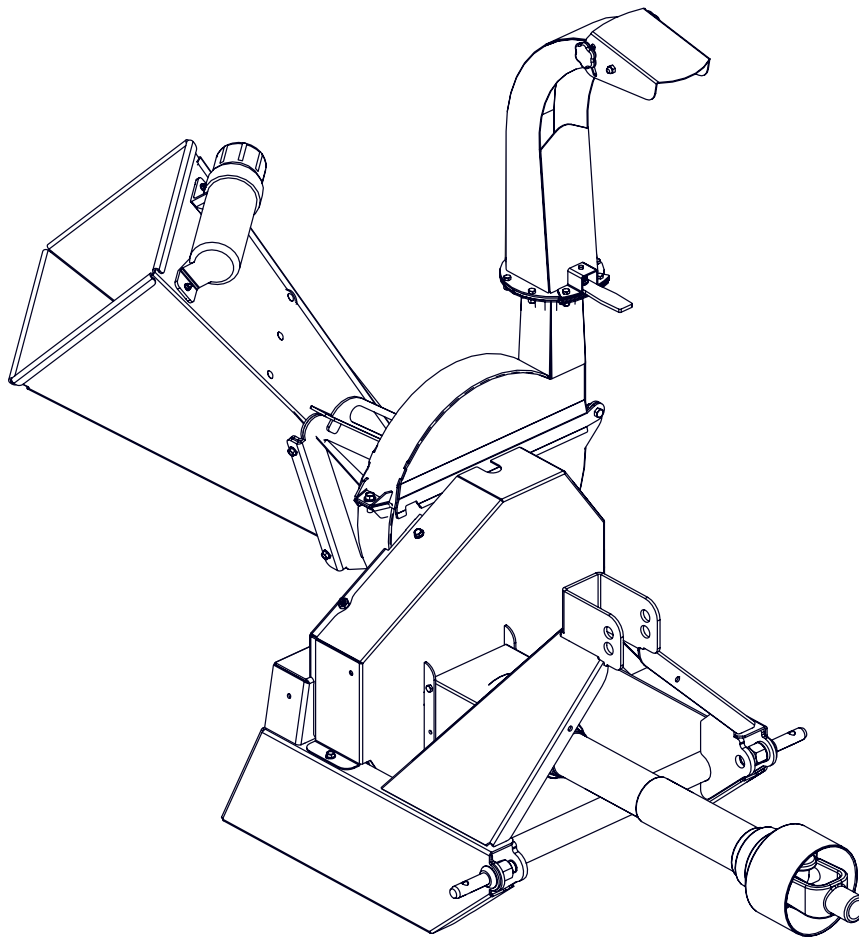




EMB Manufacturing Inc.
4144 Boomer Line · St. Clements, On · N0B 2M0 · Canada
Ph: (519) 699-9283 · Fax: (519) 699-4146
www.wallensteinequipment.com

BX32S Chipper Parts Manual

Starting with S/N's
132S676



Refer to the operators
manual for safe
operation and
maintenance

Foreword

EMB Mfg. has prepared this parts manual to assist customers in ordering quality OEM replacement parts.

Proper and regular service and replacing old, worn or broken parts with the correct OEM parts are essential to prolonging the life of your EMB product. Please refer to this manual before ordering any replacement parts.

All information contained in this parts manual is based on the latest product specification available at the time of printing this manual. If your product differs from the specifications contained within this manual contact EMB Mfg. for information.

EMB reserves the right to alter specifications on their products at any time.

Reproduction of this parts manual of any kind is prohibited without prior written permission from EMB Mfg.

For parts and information please contact your dealer. If your dealer is no longer available please go to our website: <http://www.wallensteinequipment.com> and click on "FIND A DEALER NEAR YOU" for information on a local dealer.

Table of Contents

Bolt Torque.....	4
Hydraulic Fitting Torque	5
Wheel Lug Torque	5
Main Assembly	6
Driveline.....	7
Discharge Chute Assembly.....	8
Hopper Flap Detail	8
Grease Whip Ass'y	9
Label Layout.....	12
Accessories.....	14

Maintenance should be performed by
trained personnel only.



Refer to the operators
manual for safe
operation and
maintenance

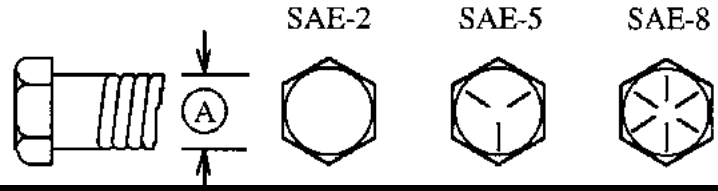
Bolt Torque

CHECKING BOLT TORQUE

The tables shown below give correct torque values for various bolts and capscrews. Tighten all bolts to the torques specified in chart unless otherwise noted. Check tightness of bolts periodically, using bolt torque chart as a guide. Replace hardware with the same strength bolt.

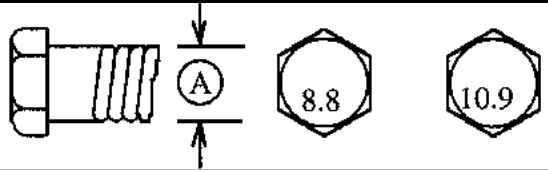
ENGLISH TORQUE SPECIFICATIONS

Bolt Diameter "A"	Bolt Torque*					
	SAE 2 (N.m) (lb-ft)		SAE 5 (N.m) (lb-ft)		SAE 8 (N.m) (lb-ft)	
1/4"	8	6	12	9	17	12
5/16"	13	10	25	19	36	27
3/8"	27	20	45	33	63	45
7/16"	41	30	72	53	100	75
1/2"	61	45	110	80	155	115
9/16"	95	60	155	115	220	165
5/8"	128	95	215	160	305	220
3/4"	225	165	390	290	540	400
7/8"	230	170	570	420	880	650
1"	345	225	850	630	1320	970



METRIC TORQUE SPECIFICATIONS

Bolt Diameter "A"	Bolt Torque*			
	8.8 (N.m) (lb-ft)		10.9 (N.m) (lb-ft)	
M3	0.5	0.4	1.8	1.3
M4	3	2.2	4.5	3.3
M5	6	4	9	7
M6	10	7	15	11
M8	25	18	35	26
M10	50	37	70	52
M12	90	66	125	92
M14	140	103	200	148
M16	225	166	310	229
M20	435	321	610	450
M24	750	553	1050	774
M30	1495	1103	2100	1550
M36	2600	1917	3675	2710



Torque figures indicated above are valid for non-greased or non-oiled threads and heads unless otherwise specified. Therefore, do not grease or oil bolts or capscrews unless otherwise specified in this manual. When using locking elements, increase torque values by 5%.

* Torque value for bolts and capscrews are identified by their head markings.

Hydraulic Fitting Torque

Tightening Flare Type Tube Fittings *

1. Check flare and flare seat for defects that might cause leakage.
2. Align tube with fitting before tightening.
3. Lubricate connection and hand tighten swivel nut until snug.
4. To prevent twisting the tube(s), use two wrenches. Place one wrench on the connector body and with the second tighten the swivel nut to the torque shown.

Tube Size OD (in.)	Nut Size Across Flats (in.)	Torque Value*		Recommended Turns To Tighten (After Finger Tightening)	
		(N.m)	(lb-ft)	(Flats)	(Turn)
3/16	7/16	8	6	1	1/6
1/4	9/16	12	9	1	1/6
5/16	5/8	16	12	1	1/6
3/8	11/16	24	18	1	1/6
1/2	7/8	46	34	1	1/6
5/8	1	62	46	1	1/6
3/4	1-1/4	102	75	3/4	1/8
7/8	1-3/8	122	90	3/4	1/8

The torque values shown are based on lubricated connections as in reassembly.

Wheel Lug Torque

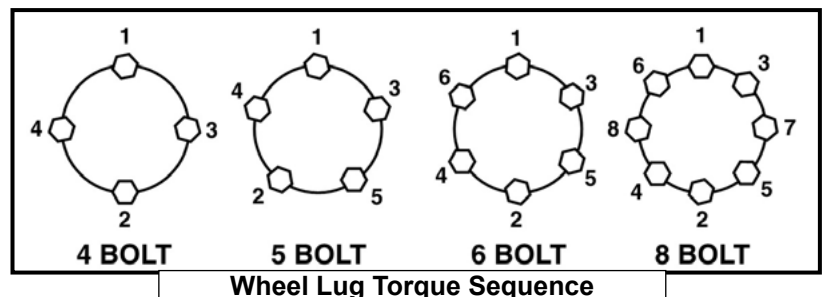
It is extremely important safety procedure to apply and maintain proper wheel mounting torque on your trailer axle. Torque wrenches are the best method to assure the proper amount of torque is being applied to a fastener.

Wheel lugs should be torqued before first road use and after each wheel removal. Check and re torque after the first 16Km (10 miles), 40Km (25 miles), and again at 80Km (50 miles). Check periodically thereafter.

Note: Wheel lugs must be applied and maintained at the proper torque levels to prevent loose wheels, broken studs, and possible dangerous separation of wheels from your axle.

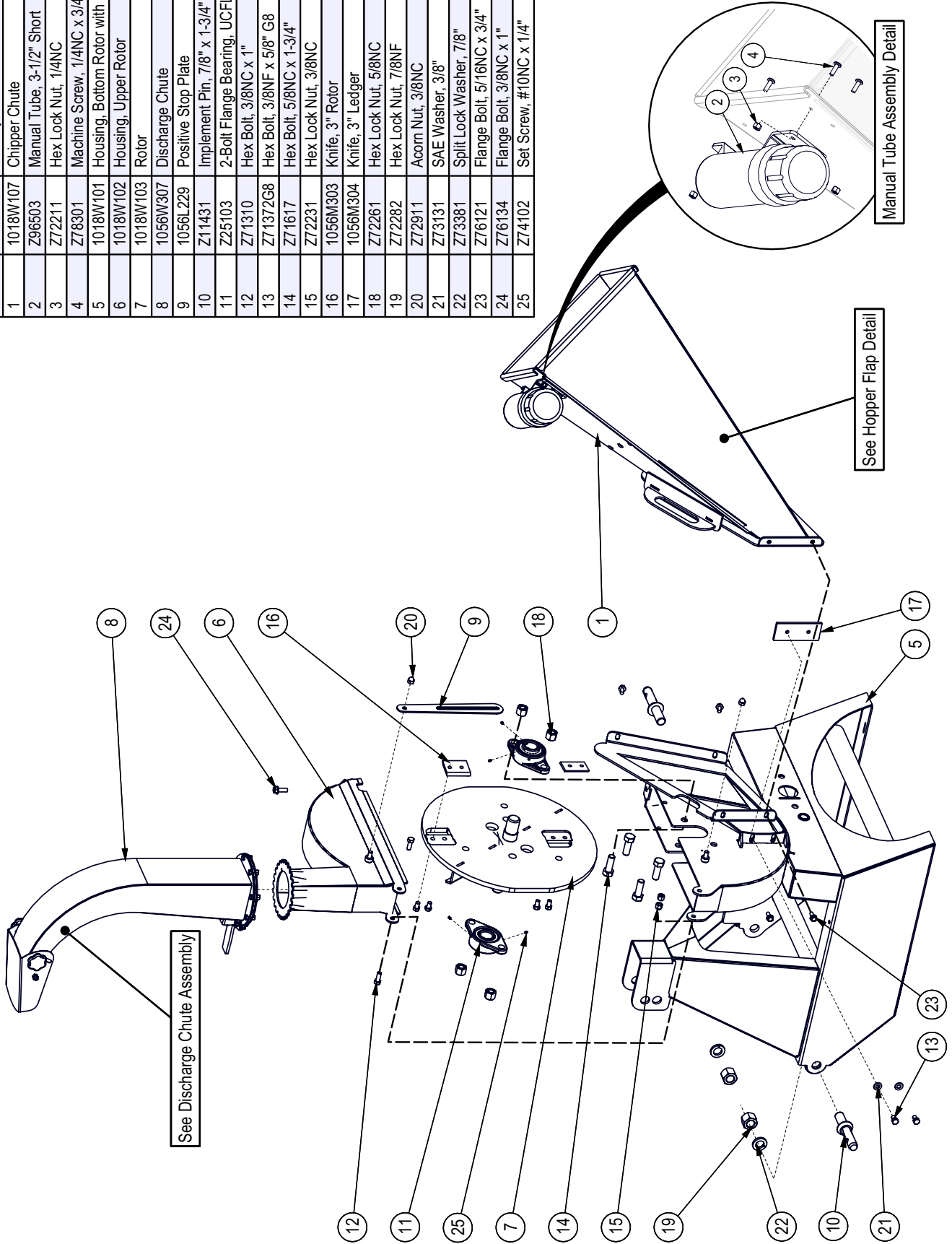
- Start all lugs by hand to prevent cross threading.
- Tighten lugs in sequence, per wheel lug torque sequence chart.
- The tightening of the fasteners should be done in stages. Following the recommended sequence, tighten fasteners per wheel torque requirements chart.

Wheel Torque Requirements				
Wheel Size	Torque Unit	1st Stage	2nd Stage	3rd Stage
8"	ft-lbs	12 - 20	30 - 35	45 - 55
	Nm	16 - 26	39 - 45.5	58.5 - 71.5
12"	ft-lbs	20 - 25	35 - 40	50 - 60
	Nm	26 - 32.5	45.5 - 52	65 - 78
13"	ft-lbs	20 - 25	35 - 40	50 - 60
	Nm	26 - 32.5	45.5 - 52	65 - 78
14"	ft-lbs	20 - 25	50 - 60	90 - 120
	Nm	26 - 32.5	65 - 78	117 - 156
15"	ft-lbs	20 - 25	50 - 60	90 - 120
	Nm	26 - 32.5	65 - 78	117 - 156
16"	ft-lbs	20 - 25	50 - 60	90 - 120
	Nm	26 - 32.5	65 - 78	117 - 156

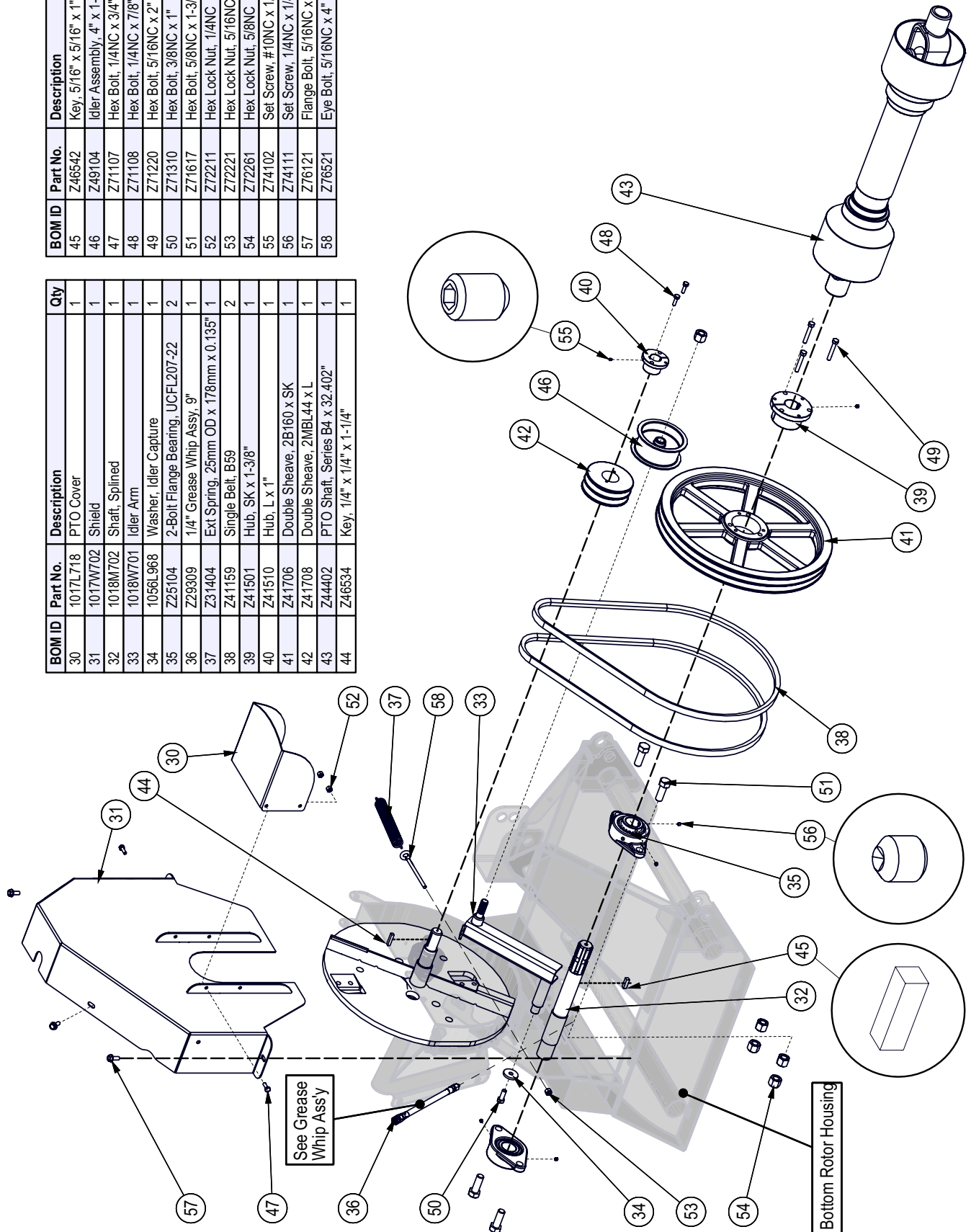


Main Assembly

BOM ID	Part No.	Description	Qty
1	1018W107	Chipper Chute	1
2	Z96503	Manual Tube, 3-1/2" Short	1
3	Z72211	Hex Lock Nut, 1/4NC	3
4	Z78301	Machine Screw, 1/4NC x 3/4"	3
5	1018W101	Housing, Bottom Rotor with PTO frame	1
6	1018W102	Housing, Upper Rotor	1
7	1018W103	Rotor	1
8	1056W307	Discharge Chute	1
9	1056L229	Positive Stop Plate	1
10	Z11431	Implement Pin, 7/8" x 1-3/4" x 7/8NF	2
11	Z25103	2-Bolt Flange Bearing, UCFL206-20	2
12	Z71310	Hex Bolt, 3/8NC x 1"	2
13	Z71372G8	Hex Bolt, 3/8NF x 5/8" G8	6
14	Z71617	Hex Bolt, 5/8NC x 1-3/4"	4
15	Z72231	Hex Lock Nut, 3/8NC	2
16	1056M303	Knife, 3" Rotor	2
17	1056M304	Knife, 3" Ledger	1
18	Z72261	Hex Lock Nut, 5/8NC	4
19	Z72282	Hex Lock Nut, 7/8NF	2
20	Z72911	Acorn Nut, 3/8NC	2
21	Z73131	SAE Washer, 3/8"	2
22	Z73381	Split Lock Washer, 7/8"	2
23	Z76121	Flange Bolt, 5/16NC x 3/4"	4
24	Z76134	Flange Bolt, 3/8NC x 1"	1
25	Z74102	Set Screw, #10NC x 1/4"	4



Driveline

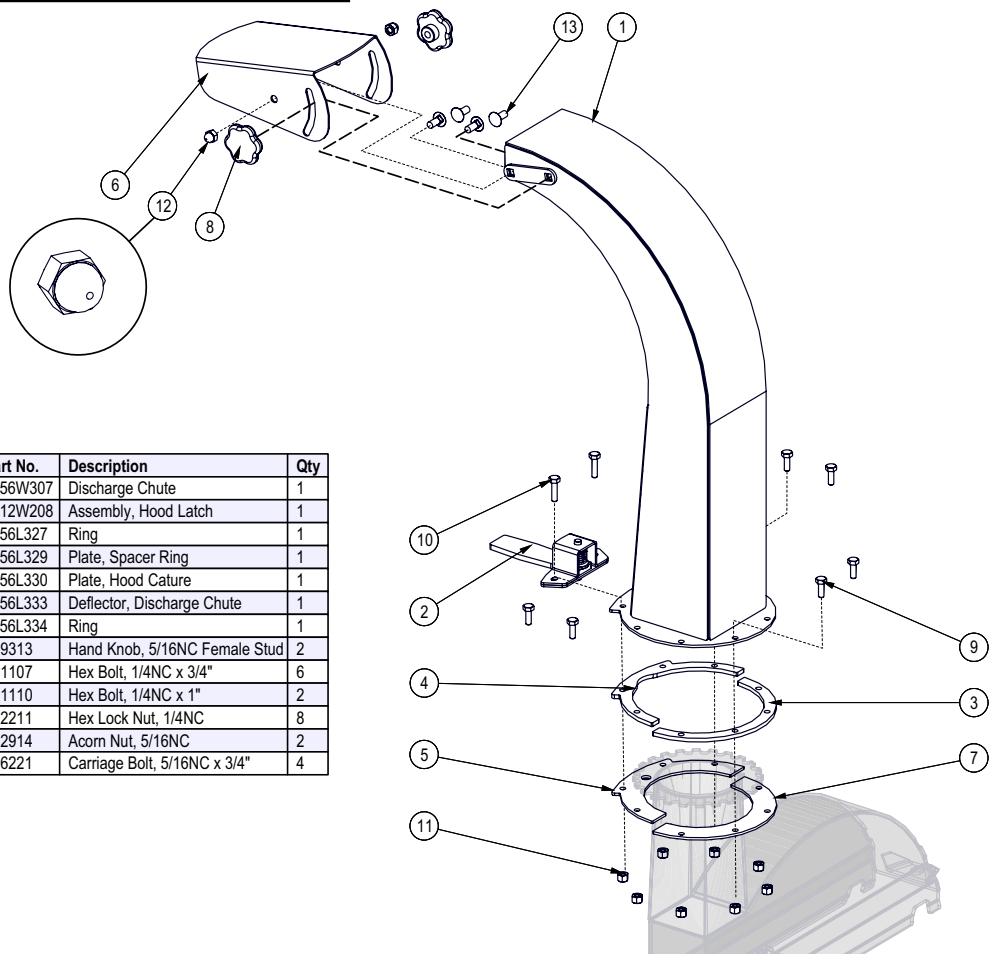


BOM ID	Part No.	Description	Qty
30	1017L718	PTO Cover	1
31	1017W702	Shield	1
32	1018M702	Shaft, Splined	1
33	1018W701	Idler Arm	1
34	1056L968	Washer, Idler Capture	1
35	Z25104	2-Bolt Flange Bearing, UCFL207-22	2
36	Z29309	1/4" Grease Whip Assy, 9"	1
37	Z31404	Ext Spring, 25mm OD x 178mm x 0.135"	1
38	Z41159	Single Belt, B59	2
39	Z41501	Hub, SK x 1-3/8"	1
40	Z41510	Hub, L x 1"	1
41	Z41706	Double Sheave, 2B160 x SK	1
42	Z41708	Double Sheave, 2MBL44 x L	1
43	Z44402	PTO Shaft, Series B4 x 32.402"	1
44	Z46534	Key, 1/4" x 1/4" x 1-1/4"	1

BOM ID	Part No.	Description	Qty
45	Z46542	Key, 5/16" x 5/16" x 1"	1
46	Z49104	Idler Assembly, 4" x 1-7/8" x 5/8"	1
47	Z71107	Hex Bolt, 1/4NC x 3/4"	2
48	Z71108	Hex Bolt, 1/4NC x 7/8"	2
49	Z71220	Hex Bolt, 5/16NC x 2"	3
50	Z71310	Hex Bolt, 3/8NC x 1"	1
51	Z71617	Hex Bolt, 5/8NC x 1-3/4"	4
52	Z72211	Hex Lock Nut, 1/4NC	2
53	Z72221	Hex Lock Nut, 5/16NC	1
54	Z72261	Hex Lock Nut, 5/8NC	5
55	Z74102	Set Screw, #10NC x 1/4"	1
56	Z74111	Set Screw, 1/4NC x 1/4"	5
57	Z76121	Flange Bolt, 5/16NC x 3/4"	3
58	Z76521	Eye Bolt, 5/16NC x 4"	1

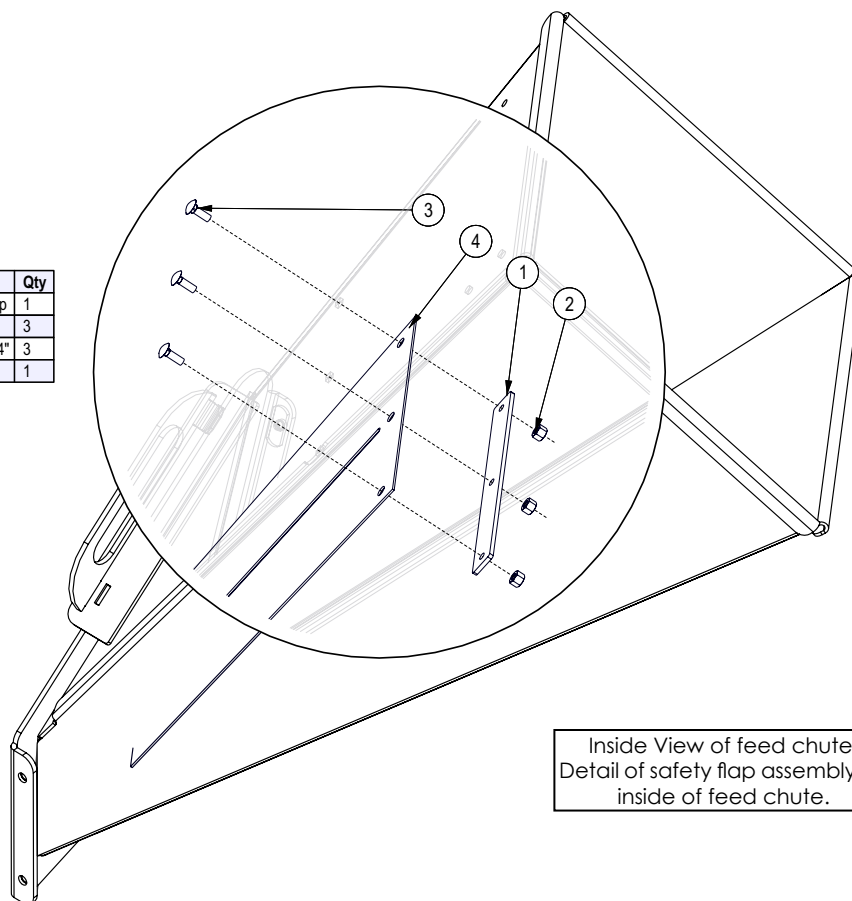
Discharge Chute Assembly

BOM ID	Part No.	Description	Qty
1	1056W307	Discharge Chute	1
2	1012W208	Assembly, Hood Latch	1
3	1056L327	Ring	1
4	1056L329	Plate, Spacer Ring	1
5	1056L330	Plate, Hood Capture	1
6	1056L333	Deflector, Discharge Chute	1
7	1056L334	Ring	1
8	Z19313	Hand Knob, 5/16NC Female Stud	2
9	Z71107	Hex Bolt, 1/4NC x 3/4"	6
10	Z71110	Hex Bolt, 1/4NC x 1"	2
11	Z72211	Hex Lock Nut, 1/4NC	8
12	Z72914	Acorn Nut, 5/16NC	2
13	Z76221	Carriage Bolt, 5/16NC x 3/4"	4



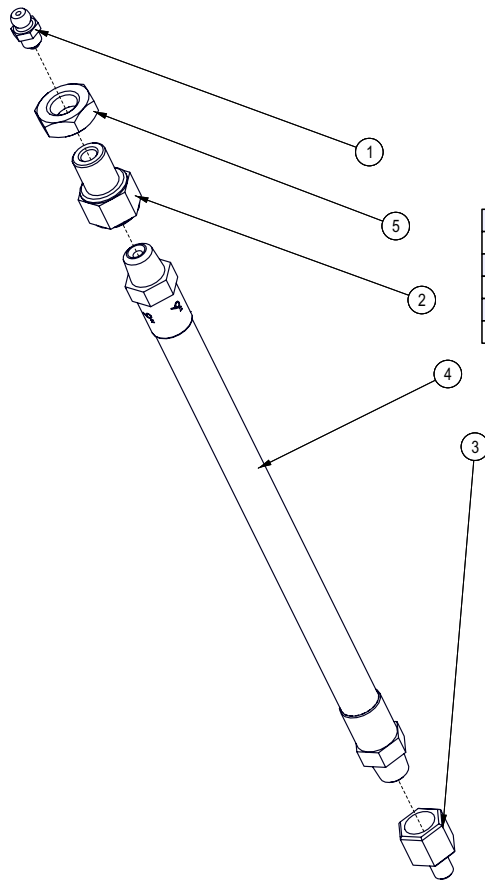
Hopper Flap Detail

BOM ID	Part No.	Description	Qty
1	1018L994	Chipper Chute Flap Clamp	1
2	Z72211	Hex Lock Nut, 1/4NC	3
3	Z76211	Carriage Bolt, 1/4NC x 3/4"	3
4	1056S604	Flap, Hopper	1

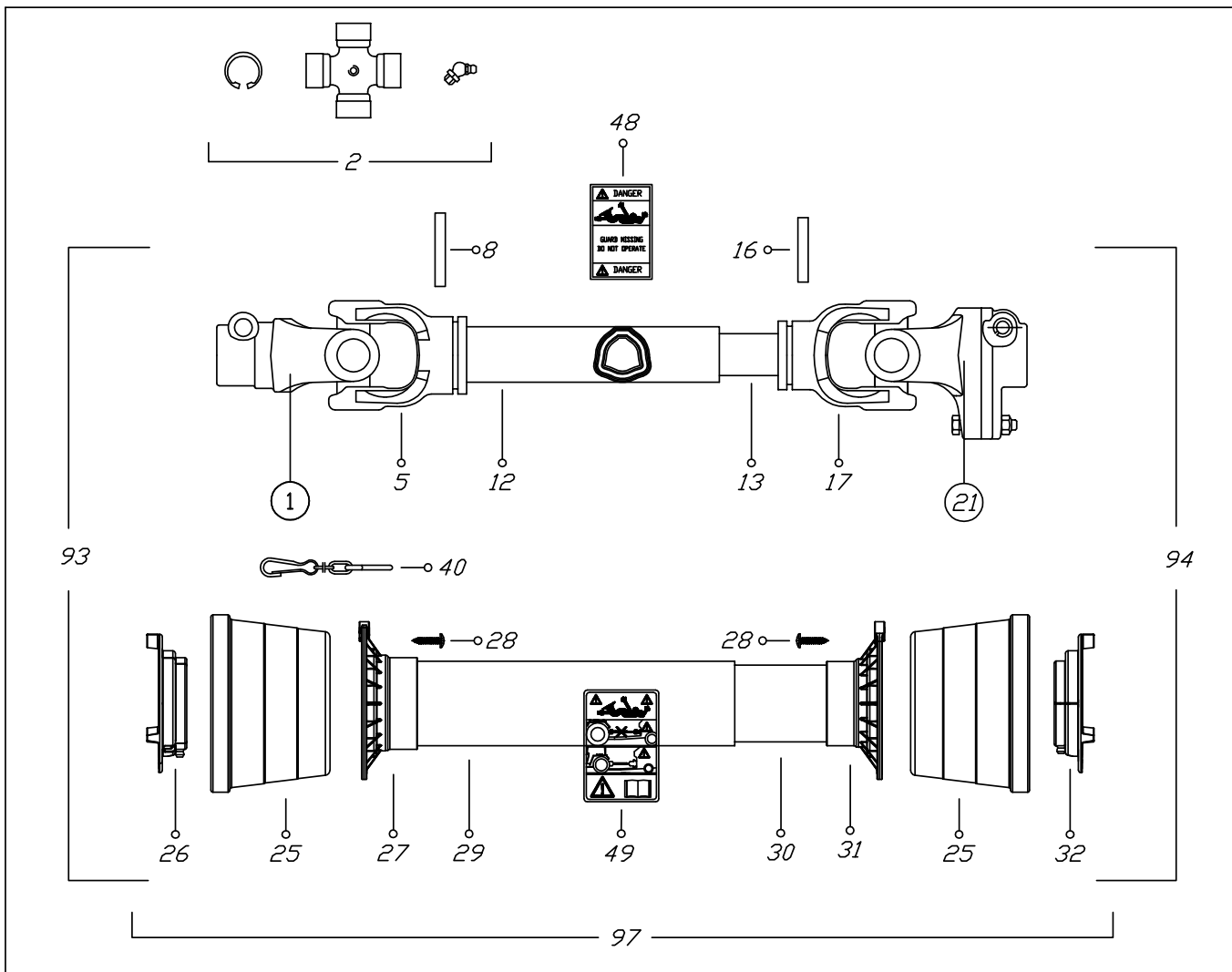


Inside View of feed chute:
Detail of safety flap assembly on
inside of feed chute.

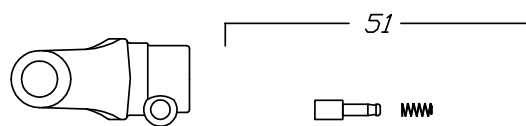
Grease Whip Ass'y



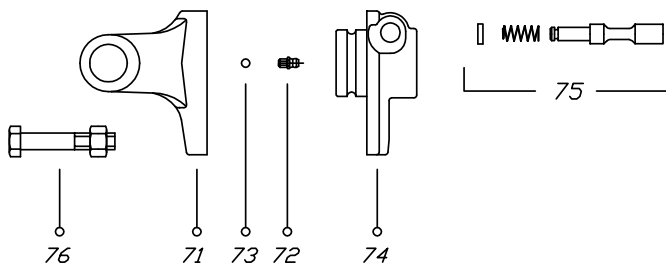
BOM ID	Part No.	Description	Qty
1	Z29202	Grease Fitting, 1/4NF	1
2	Z29206	Bulkhead, FP x FP 0402 x 7/16NC	1
3	Z29303	Grease Fitting, FP02 x 1/4NF	1
4	Z29304	1/4" Grease Whip, MP x MP 0202 x 9'	1
5	Z72341	Jam Nut, 7/16NC	1



①



②1

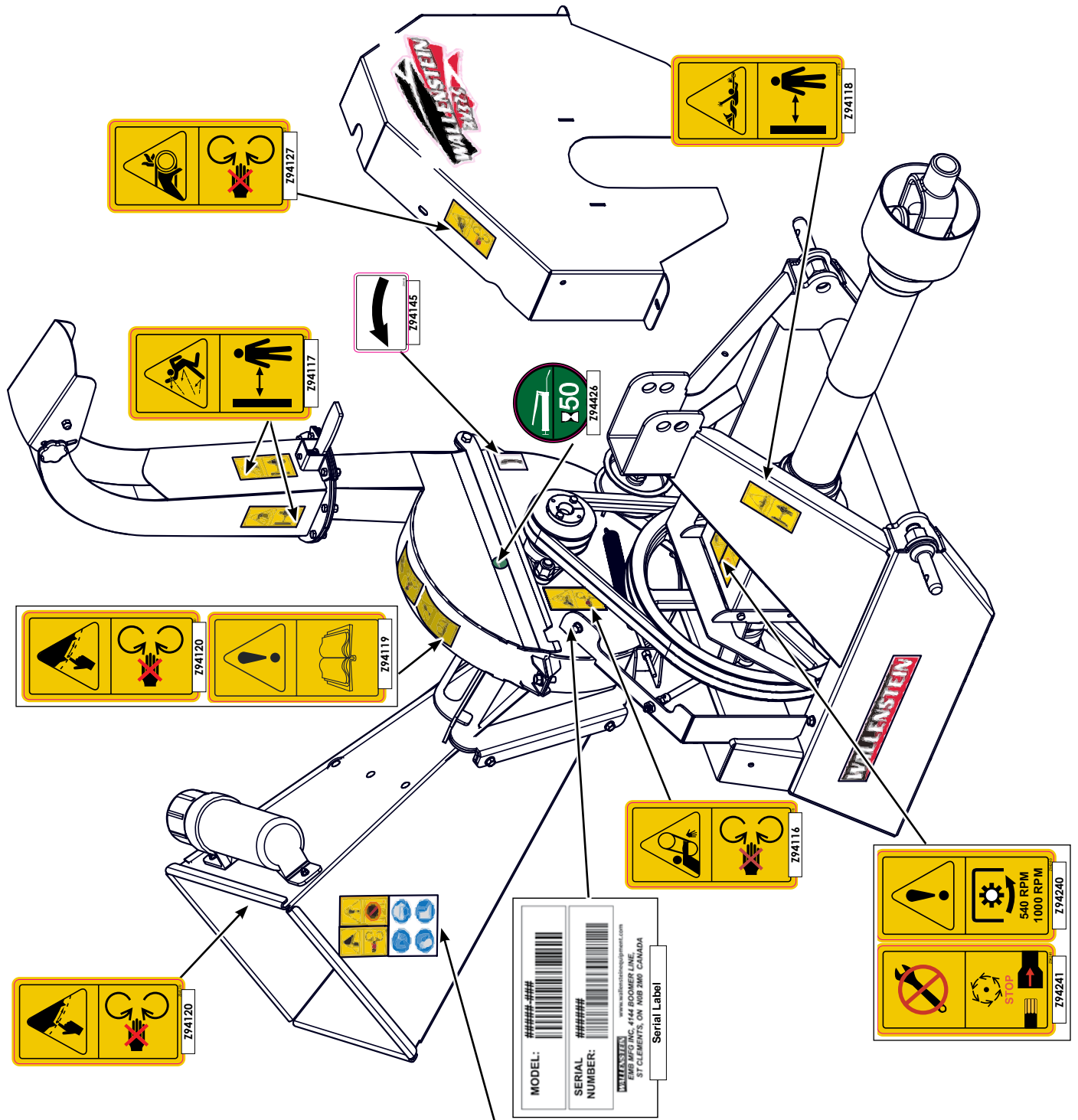


Binacchi SPARE PARTS LIST : B4N061USA60098

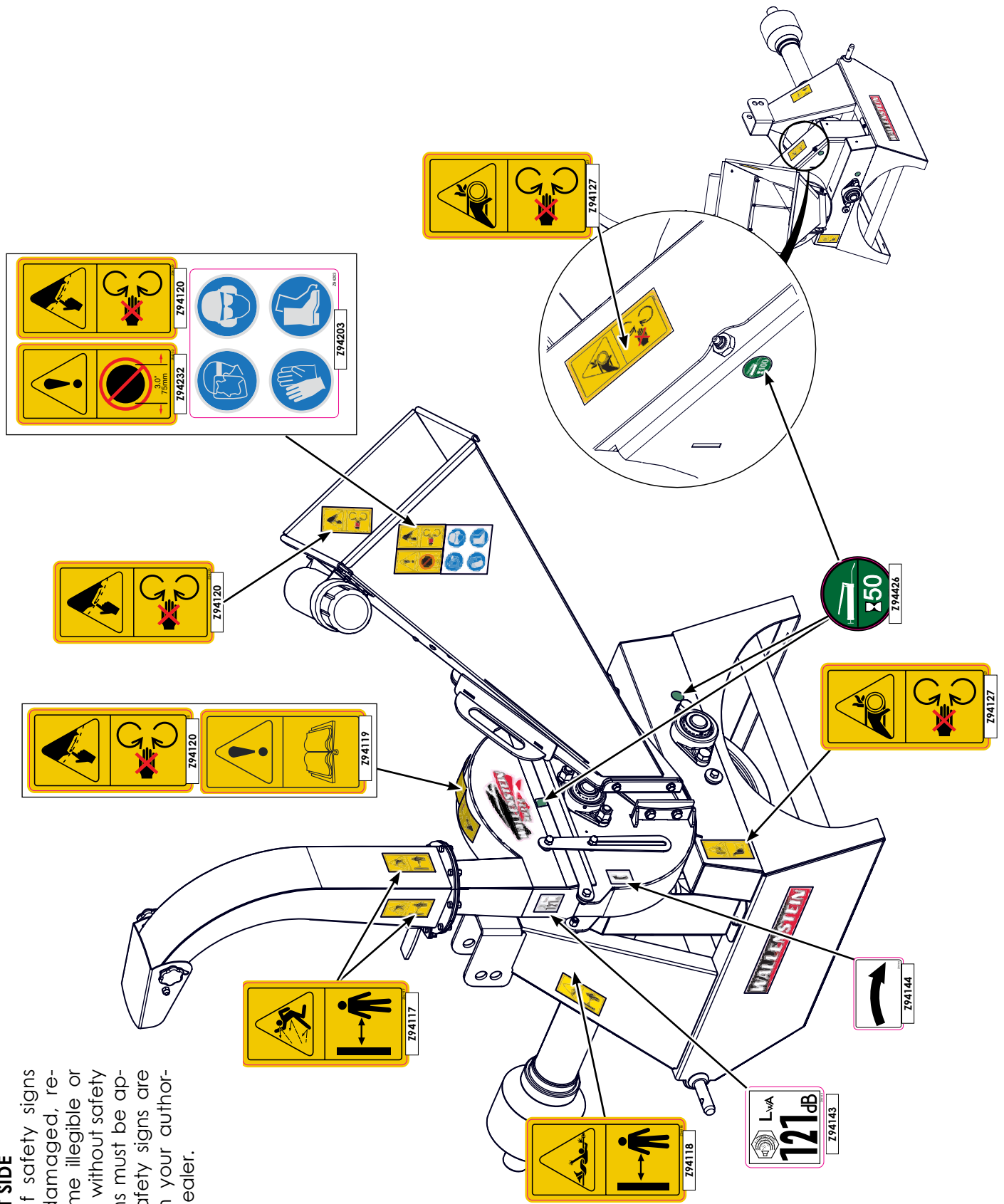
POS.	DESCRIPTION	Q.	Part #
01	YOKE	1	0800403
02	CROSS JOURNAL ASS.	2	08204
05	OUTER TUBE YOKE	1	08004021
08	FLEXIBLE PIN	1	098700860
12	CM. 100 CARDAN TUBE(*)	1	09881433100
13	CM. 100 CARDAN TUBE(*)	1	09881364100
16	FLEXIBLE PIN	1	098700855
17	INNER TUBE YOKE	1	08004011
21	SHEAR BOLT M8X1.25X45	1	Z44902
25	CONE SHIELD BELL 03-04	2	021904C001
26	OUTER BEARING 03-04	1	025504C001
27	OUTER BASE CONE 03-04	1	025404C001
28	SCREW	6	0998052242
29	OUTER SAFETY TUBE	1	0988966NB4061
30	INNER SAFETY TUBE	1	0988961NB4061
31	INNER BASE CONE 03-04	1	025404C002
32	INNER BEARING 03-04	1	025504C002
40	CHAIN	1	0252000001
48	LABEL DANGER OUTER DRIVE TUBE	1	09872006
49	EXTERNAL SHIELD LABEL	1	09872003
51	COMPLETE PUSH BUTTTON	1	0986014047
71	YOKE FOR LB4	1	08896904
72	GREASE NIPPLE	1	0984010150
73	STEEL BALL	23	098680104
74	HUB	1	088964
75	PUSH PIN SET	1	0986014075
76	NUT AND BOLT M8 x 1.25 x 45 10.9	1	Z44902
93	OUTER HALF SHAFT	1	B4N061US2
94	INNER HALF SHAFT	1	B4N061US1098
97	SAFETY GUARD	1	083US04061

Label Layout

LEFT SIDE
 REMEMBER - If safety signs have been damaged, removed, become illegible or parts replaced without safety signs, new signs must be applied. New safety signs are available from your authorized dealer.

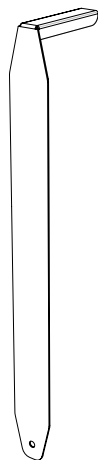


RIGHT SIDE
 REMEMBER - If safety signs have been damaged, removed, become illegible or parts replaced without safety signs, new signs must be applied. New safety signs are available from your authorized dealer.



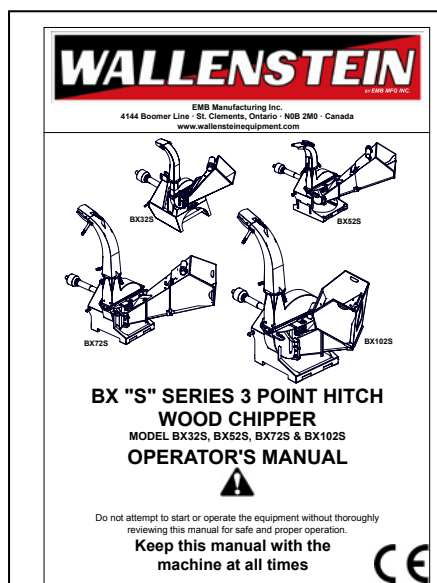
Accessories

Call your dealer for pricing and availability



#1012L269 LEDGER CLEARANCE SETTING GAUGE

An easy and accurate way of setting the critical clearances between the ledger blade and the rotor chipper blade.



#Z97085 BX "S" SERIES 3 POINT HITCH WOOD CHIPPER OPERATOR'S MANUAL

Available as a download at
www.wallensteinequipment.com