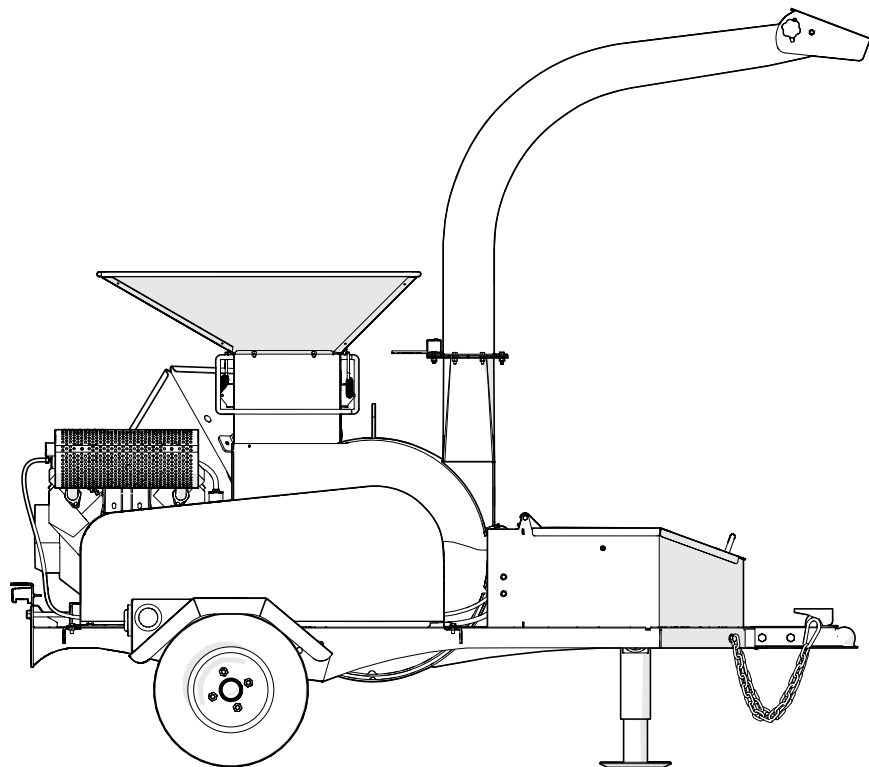


PARTS MANUAL

Serial Number 2E9US1116FS058016 to 2E9US1116FS060064

BXMT4238 **Chipper-Shredder**



Foreword

This Wallenstein parts manual is prepared to assist customers in ordering quality OEM replacement parts.

Regular maintenance combined with replacing old, worn or broken parts with the correct OEM parts is essential in prolonging the life of your Wallenstein product. Refer to this manual to identify replacement parts.

To order parts, contact your Wallenstein dealer or distributor. Have the product model and serial number handy.

If your dealer is no longer available, please go to our website: <http://wallensteinequipment.com> and click on the [Dealer Locator](#) to find the nearest dealer.

All information contained in this parts manual is current as per the revision date at the bottom of the page. Wallenstein reserves the right to change product specifications at any time without notice.

If your product specifications differ from those contained in this manual, contact Wallenstein for current information.

Reproduction of information in this parts manual is prohibited without prior written permission from Wallenstein Equipment Inc.

Wallenstein Equipment Inc. • © 2022

WARNING!

Refer to the operators manual for safe operation and maintenance.

Maintenance should be performed by trained personnel only.

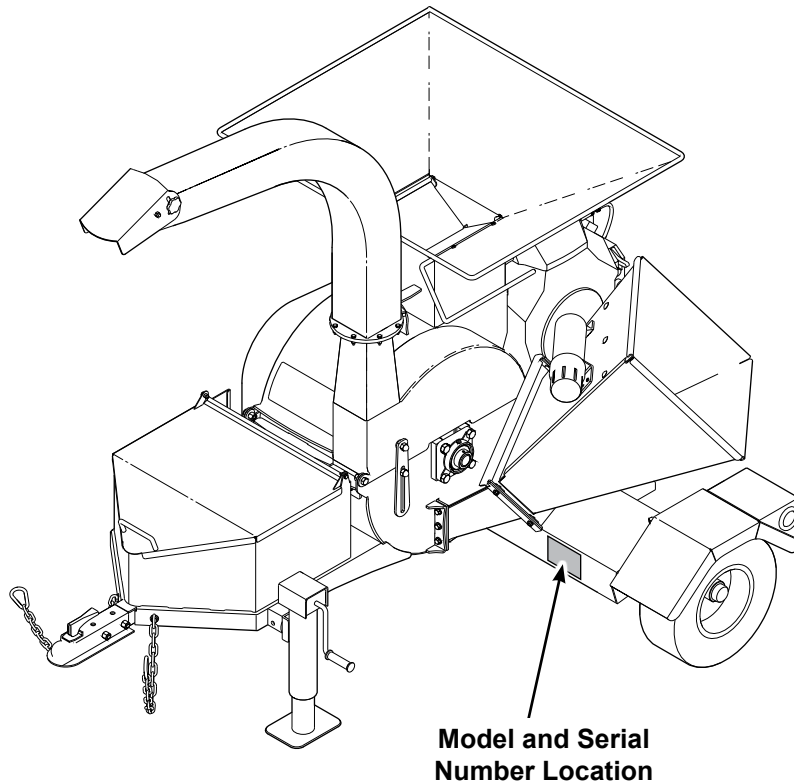
Serial Number Location

Always provide the model and serial number of your Wallenstein product when ordering parts or requesting service or other information. This information is found on the product information plate as shown below.

Record your product information here for future reference.

Model _____

Serial Number _____

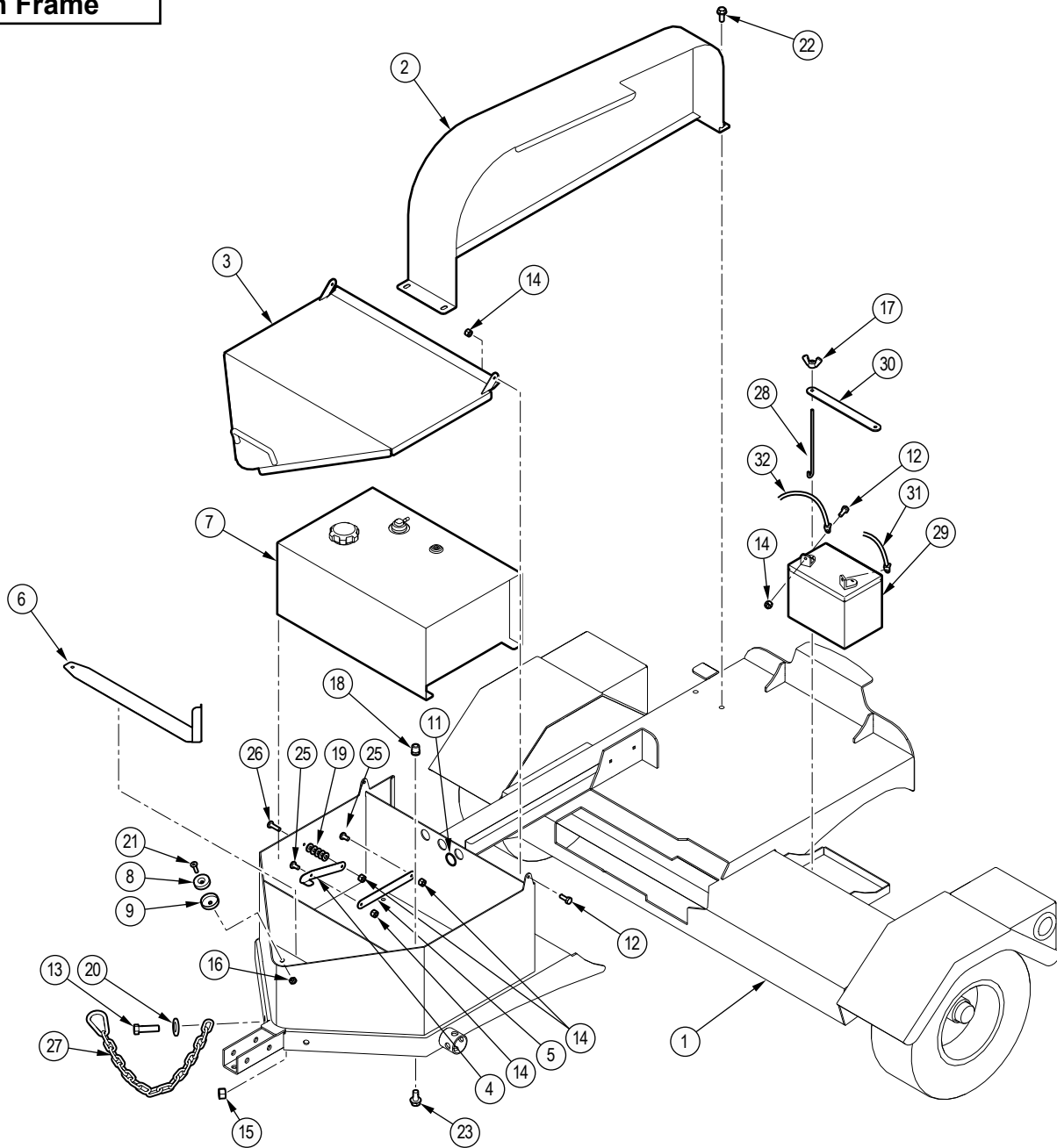


www.wallensteinequipment.com

Contents

| | |
|---|-----------|
| Main Frame | 4 |
| Blower Parts | 5 |
| Engine and Driveline | 6A |
| Engine and Driveline with Hour Meter | 6B |
| Running Gear S/N 2E9US1116FS058016 to 2E9US1118LS060053..... | 7A |
| Running Gear S/N 2E9US1118LS060054 and Up | 7B |
| Idler Hub Assembly..... | 8 |
| Chipper Feed Hopper Flap..... | 9 |
| Discharge Chute Assembly..... | 10 |
| Rotor | 11 |
| Fuel Tank Assembly and Lines..... | 12 |
| Decal Layout..... | 13 |
| Common Bolt Torque Values | 15 |
| Wheel Lug Torque Values..... | 16 |

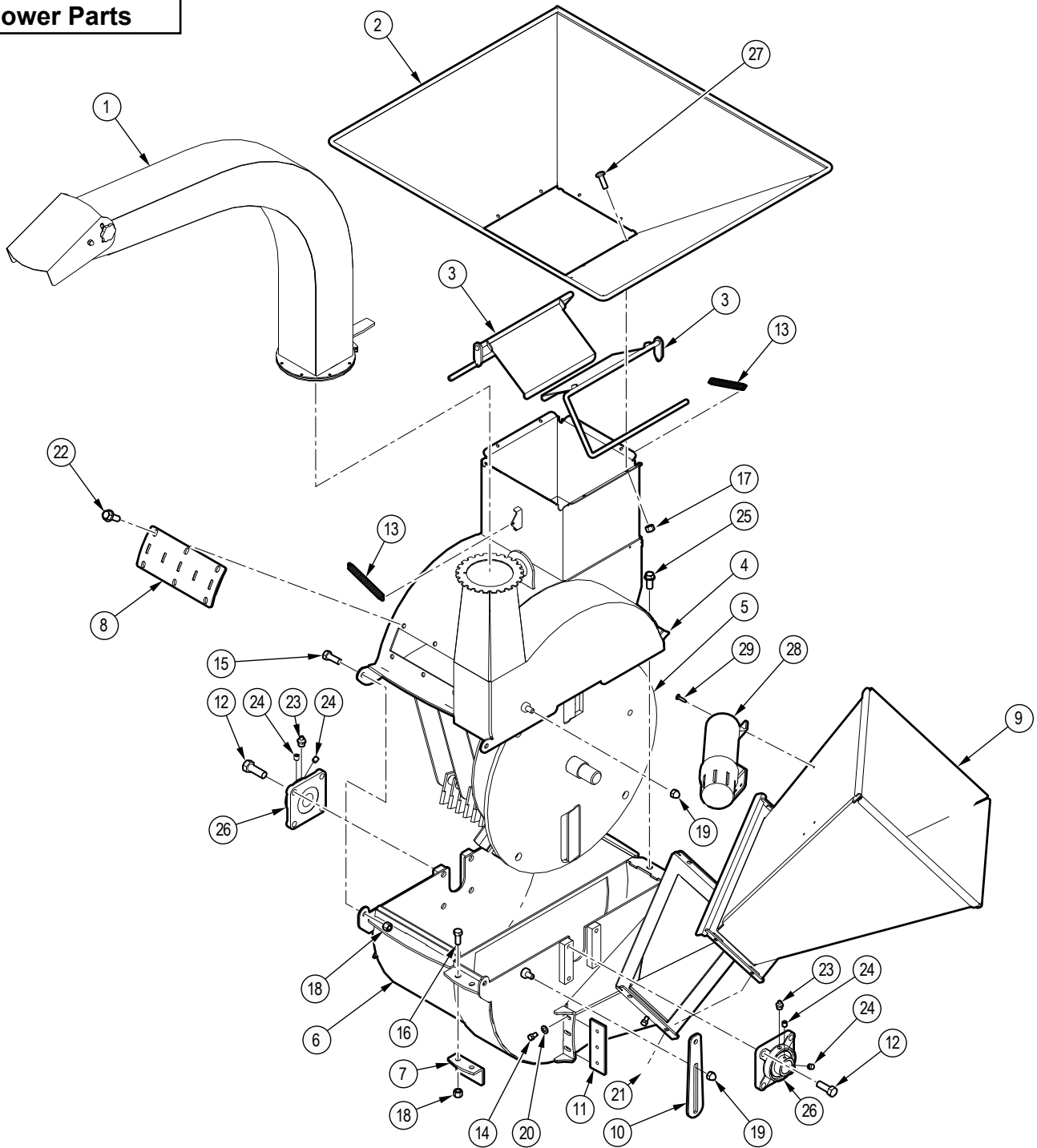
Main Frame



| Item No. | Part No. | Description | Qty |
|----------|----------|---------------------------------|-----|
| 1 | 1055W503 | Main Frame | 1 |
| 2 | 1055W510 | Belt Shield | 1 |
| 3 | 1055W519 | Tool Box Lid | 1 |
| 4 | 1055L594 | Lock Link, Toolbox Lid | 1 |
| 5 | 1055L595 | Link, Toolbox Lid | 1 |
| 6 | 1012L269 | Gauge, Ledger Setting | 1 |
| 7 | 1052A501 | Fuel Tank, Trailer Chippers EPA | 1 |
| 8 | Z19910 | Puck Magnet, 1" | 1 |
| 9 | Z19911 | Magnet Cup, 1" for Z19910 | 1 |
| 11 | Z62823 | Rubber Grommet, 5/8" x 1/8" | 2 |
| 12 | Z71107 | Hex Bolt, 1/4NC x 3/4" | 4 |
| 13 | Z71415 | Hex Bolt, 7/16NC x 1-1/2" | 2 |
| 14 | Z72211 | Hex Lock Nut, 1/4NC | 7 |
| 15 | Z72241 | Hex Lock Nut, 7/16NC | 2 |
| 16 | Z72752 | Machine Nut, #10NF | 1 |

| Item No. | Part No. | Description | Qty |
|----------|----------|------------------------------------|-----|
| 17 | Z72921 | Wing Nut, 1/4NC | 2 |
| 18 | Z72958 | Rivet Nut, 3/8NC x 150 | 4 |
| 19 | Z73111 | SAE Washer, 1/4" | 5 |
| 20 | Z73142 | SAE Washer, 7/16" | 2 |
| 21 | Z75203 | FHCS, #10NF x 3/4" | 1 |
| 22 | Z76121 | Flange Bolt, 5/16NC x 3/4" | 4 |
| 23 | Z76133 | Flange Bolt, 3/8NC x 3/4" | 4 |
| 25 | Z78317 | Machine Screw, 1/4NC x 1/2" | 2 |
| 26 | Z78318 | Machine Screw, 1/4NC x 7/8" | 1 |
| 27 | Z92303 | Safety Chain, 1/4" x 2ft with Snap | 2 |
| 28 | Z93202 | J-Hook, 1/4" x 7" | 2 |
| 29 | Z93204 | Battery, 325CCA | 1 |
| 30 | Z93207 | Hold-Down Strap, 1" x 8-1/2" | 1 |
| 31 | Z93213 | Battery Cable, Negative x 36" | 1 |
| 32 | Z93214 | Battery Cable, Positive x 36" | 1 |

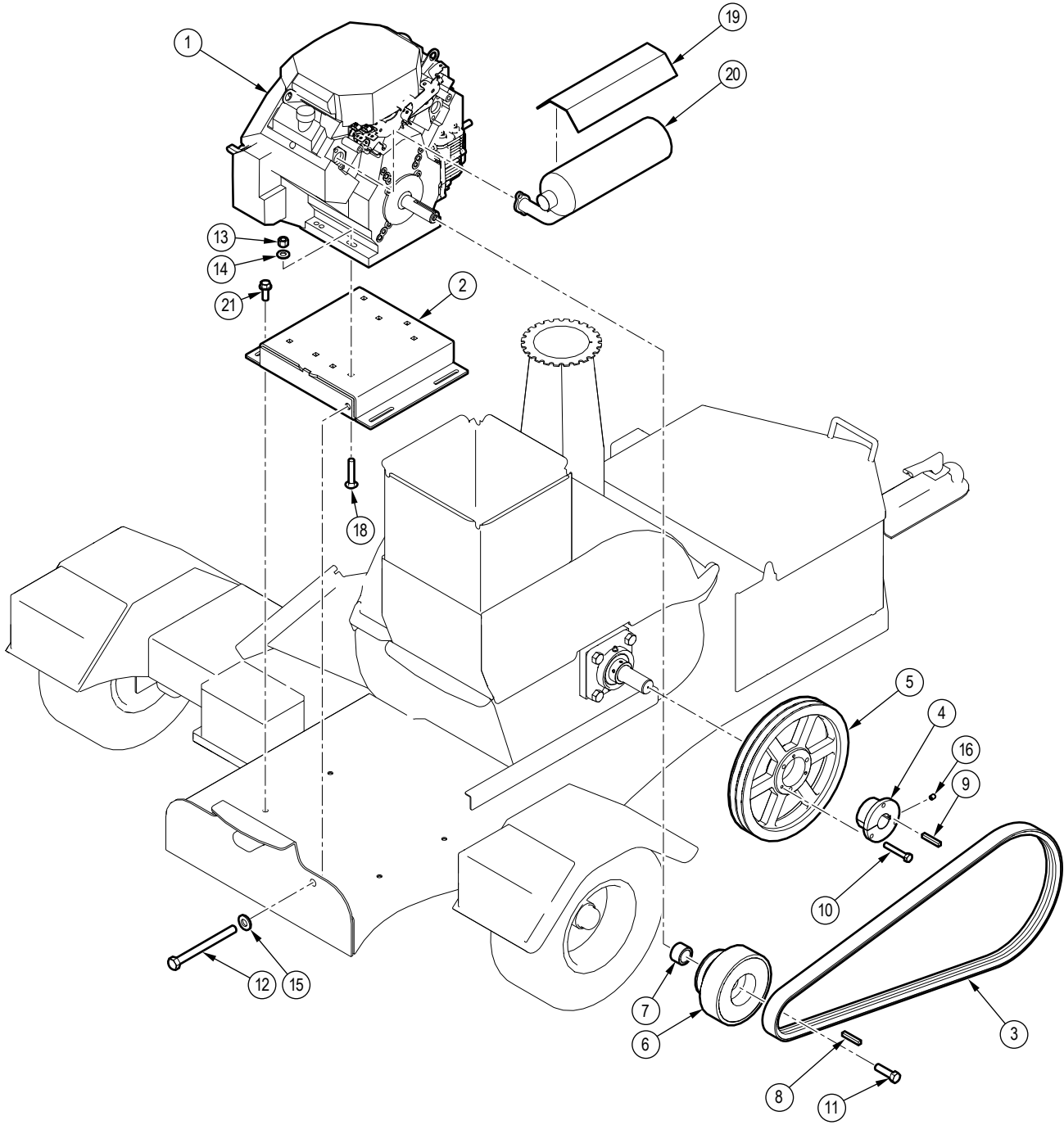
Blower Parts



| Item No. | Part No. | Description | Qty |
|----------|----------|--------------------------------------|-----|
| 1 | 1055A502 | Assembly, Discharge Chute | 1 |
| 2 | 1016W627 | Hopper, Shredder | 1 |
| 3 | 1016W625 | Flapper | 2 |
| 4 | 1055W517 | Housing, Upper Rotor | 1 |
| 5 | 1016W603 | Rotor | 1 |
| 6 | 1055W518 | Housing, Bottom Rotor | 1 |
| 7 | 1011W104 | Twig Breaker | 1 |
| 8 | 1016W634 | Chop Block | 1 |
| 9 | 1016W632 | Chipper Feed Hopper | 1 |
| 10 | 1055L598 | Positive Stop Plate | 1 |
| 11 | 1011M104 | Knife, 4" Ledger | 1 |
| 12 | Z71672G8 | Hex Bolt, 5/8NF x 1-3/4" G8 | 8 |
| 13 | Z31301 | Ext Spring, 17mm OD x 140mm x 0.080" | 2 |
| 14 | Z71372G8 | Hex Bolt, 3/8NF x 5/8" G8 | 3 |
| 15 | Z71510 | Hex Bolt, 1/2NC x 1" | 2 |

| Item No. | Part No. | Description | Qty |
|----------|----------|----------------------------------|-----|
| 16 | Z71512 | Hex Bolt, 1/2NC x 1-1/4" | 2 |
| 17 | Z72211 | Hex Lock Nut, 1/4NC | 8 |
| 18 | Z72251 | Hex Lock Nut, 1/2NC | 4 |
| 19 | Z72915 | Acorn Nut, 1/2NC | 2 |
| 20 | Z73131 | SAE Washer, 3/8" | 3 |
| 21 | Z76121 | Flange Bolt, 5/16NC x 3/4" | 4 |
| 22 | Z76134 | Flange Bolt, 3/8NC x 1" | 6 |
| 23 | Z29201 | Grease Fitting, MP02 | 2 |
| 24 | Z74122 | Set Screw, 5/16NF x 3/8" | 4 |
| 25 | Z76153 | Flange Bolt, 1/2NC x 1" | 1 |
| 26 | Z25204 | 4-Bolt Flange Bearing, UCF208-24 | 2 |
| 27 | Z78301 | Machine Screw, 1/4NC x 3/4" | 8 |
| 28 | Z96503 | Manual Tube, 3-1/2" Short | 1 |
| 29 | Z76712 | Self-tapping Screw, #10 x 3/4" | 3 |

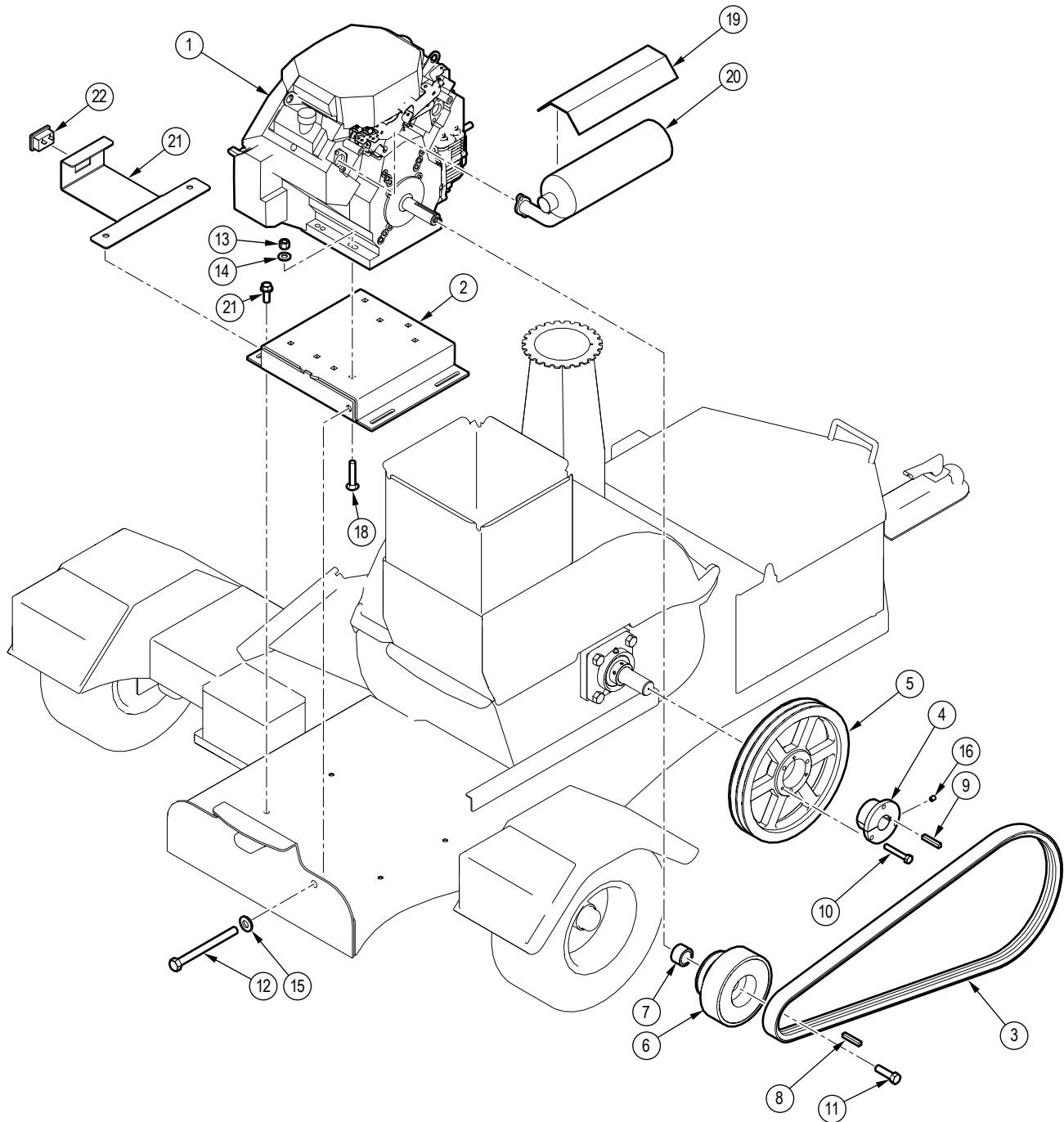
Engine and Driveline



| Item No. | Part No. | Description | Qty |
|----------|----------|------------------------------------|-----|
| 1 | Z47501 | Kohler CH980, Electric | 1 |
| 2 | 1055W514 | Engine Mount | 1 |
| 3 | Z41259 | Belt, Double "B" x 77" | 1 |
| 4 | Z41501 | Hub, SK x 1-3/8" | 1 |
| 5 | Z41702 | Double Sheave, 2B124 x SK | 1 |
| 6 | Z41903 | Centrifugal Clutch, 2B46 x 1-7/16" | 1 |
| 7 | Z46353 | Spacer, 1-7/16" ID x 2.625" | 1 |
| 8 | Z46556 | Key, 3/8" x 3/8" x 2-1/4" | 1 |
| 9 | Z46543 | Key, 5/16" x 5/16" x 1-1/2" | 1 |
| 10 | Z71220 | Hex Bolt, 5/16NC x 2" | 3 |
| 11 | Z71671 | Hex Bolt, 5/8NF x 1-1/2" | 1 |

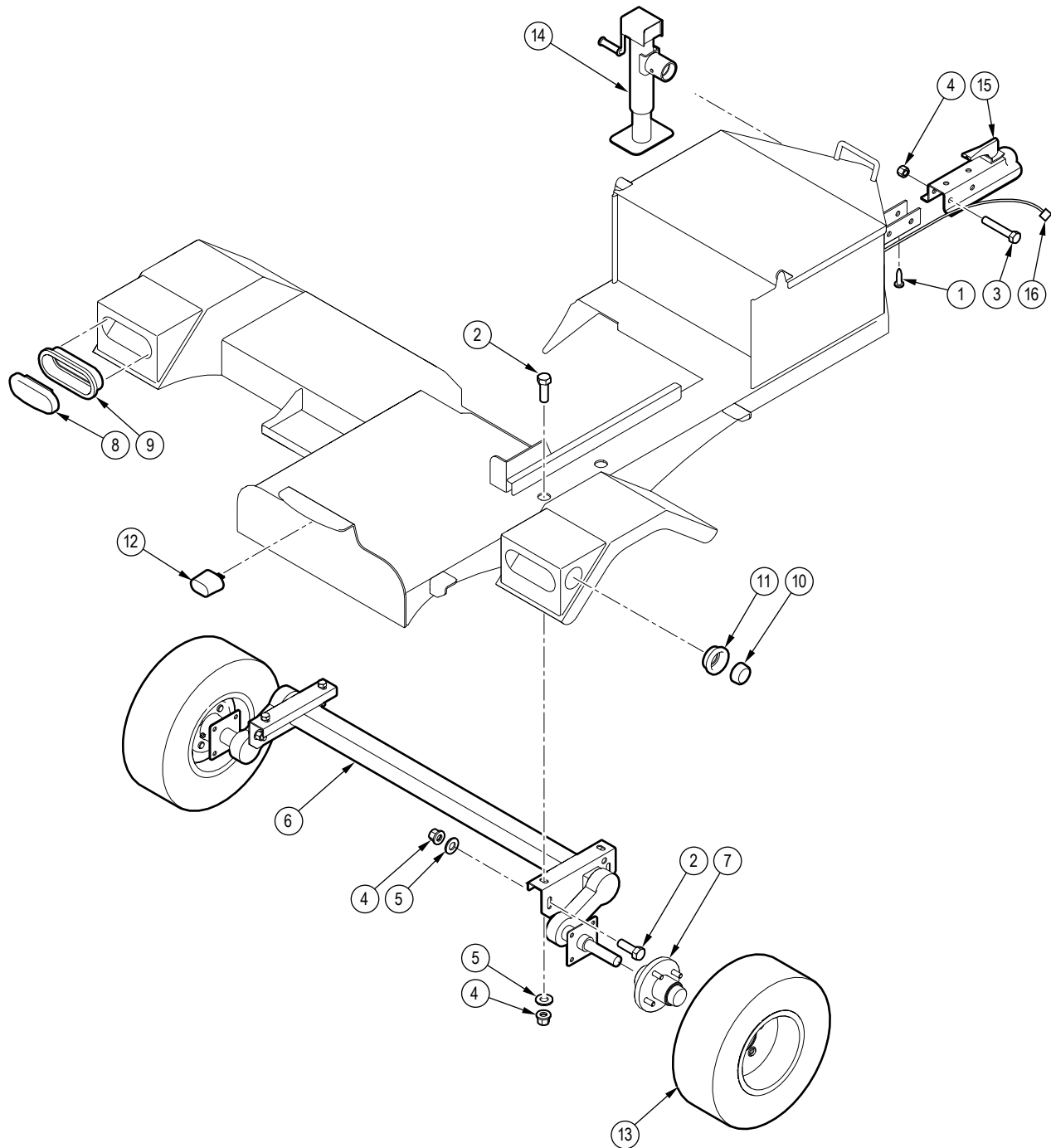
| Item No. | Part No. | Description | Qty |
|----------|----------|---------------------------------------|-----|
| 12 | Z71590 | Hex Bolt, 1/2NC x 5-1/2" Full Threads | 1 |
| 13 | Z72231 | Hex Lock Nut, 3/8NC | 4 |
| 14 | Z73131 | SAE Washer, 3/8" | 4 |
| 15 | Z73151 | SAE Washer, 1/2" | 1 |
| 16 | Z74111 | Set Screw, 1/4NC x 1/4" | 1 |
| 18 | Z76235 | Carriage Bolt, 3/8NC x 2" | 4 |
| 19 | Z47505 | Muffler Guard, CH980 | 1 |
| 20 | Z47168 | Muffler, CH980 w/ Key Side Exhaust | 1 |
| 21 | Z76134 | Flange Bolt, 3/8NC x 1" | 4 |

Engine and Driveline with Hour Meter



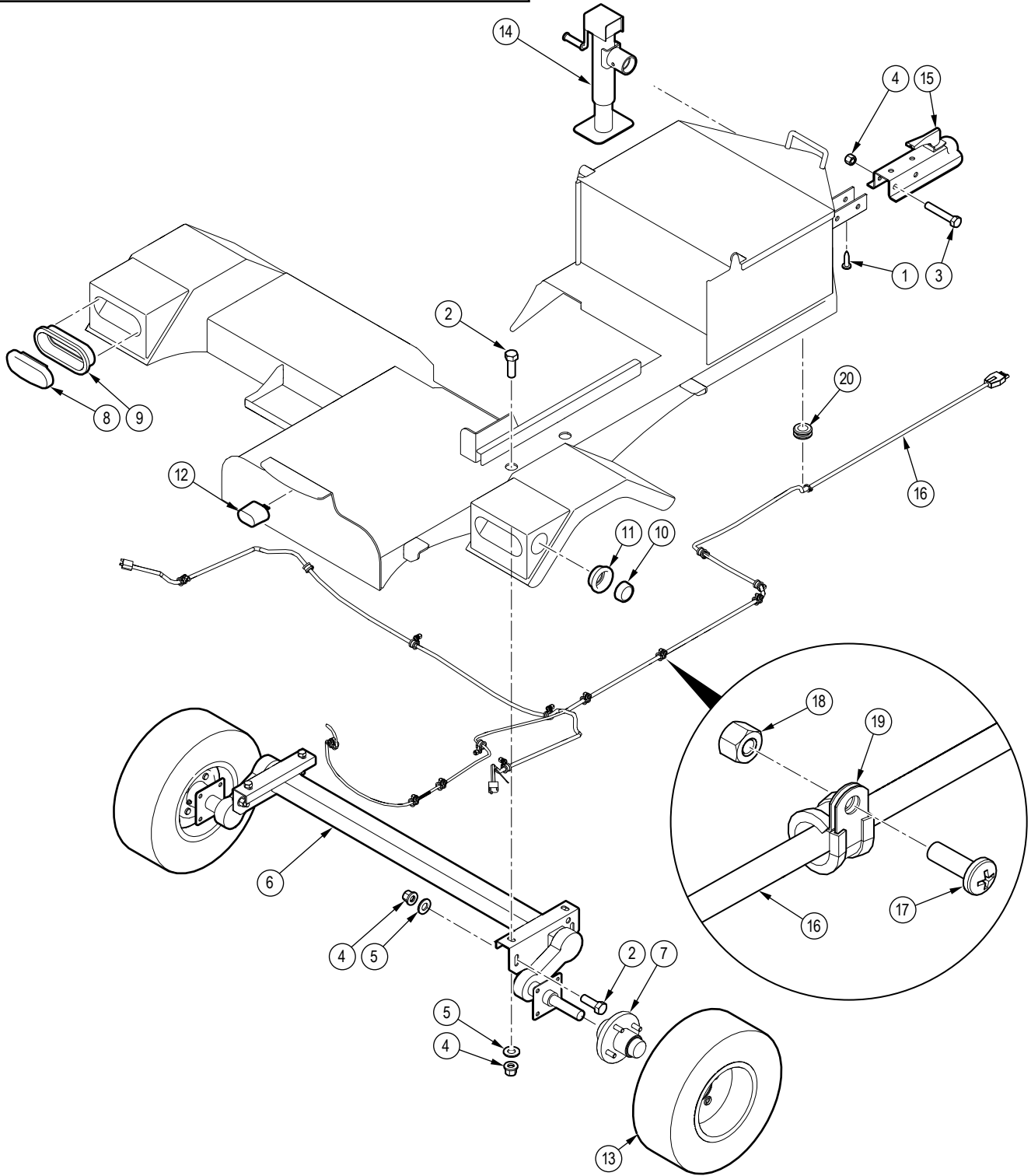
| Item No. | Part No. | Description | Qty | Item No. | Part No. | Description | Qty |
|----------|----------|------------------------------------|-----|----------|----------|---------------------------------------|-----|
| 1 | Z47501 | Kohler CH980, Electric | 1 | 12 | Z71590 | Hex Bolt, 1/2NC x 5-1/2" Full Threads | 1 |
| 2 | 1055W514 | Engine Mount | 1 | 13 | Z72231 | Hex Lock Nut, 3/8NC | 4 |
| 3 | Z41259 | Belt, Double "B" x 77" | 1 | 14 | Z73131 | SAE Washer, 3/8" | 4 |
| 4 | Z41501 | Hub, SK x 1-3/8" | 1 | 15 | Z73151 | SAE Washer, 1/2" | 1 |
| 5 | Z41702 | Double Sheave, 2B124 x SK | 1 | 16 | Z74111 | Set Screw, 1/4NC x 1/4" | 1 |
| 6 | Z41903 | Centrifugal Clutch, 2B46 x 1-7/16" | 1 | 18 | Z76235 | Carriage Bolt, 3/8NC x 2" | 4 |
| 7 | Z46353 | Spacer, 1-7/16" ID x 2.625" | 1 | 19 | Z47505 | Muffer Guard, CH980 | 1 |
| 8 | Z46556 | Key, 3/8" x 3/8" x 2-1/4" | 1 | 20 | Z47168 | Muffer, CH980 w/ Key Side Exhaust | 1 |
| 9 | Z46543 | Key, 5/16" x 5/16" x 1-1/2" | 1 | 21 | Z76134 | Flange Bolt, 3/8NC x 1" | 4 |
| 10 | Z71220 | Hex Bolt, 5/16NC x 2" | 3 | 22 | 1055L599 | Hour Meter MT | 1 |
| 11 | Z71671 | Hex Bolt, 5/8NF x 1-1/2" | 1 | | Z64612 | Tach/Hour Meter Rectangular | 1 |

Running Gear S/N 2E9US1116FS058016 to 2E9US1118LS060053



| Item No. | Part No. | Description | Qty | Item No. | Part No. | Description | Qty |
|----------|----------|---|-----|----------|----------|---------------------------------------|-----|
| 1 | Z76712 | Self-tapping Screw, #10 x 3/4" | 5 | 9 | Z61103 | Grommet, Oval x Open Back | 2 |
| 2 | Z71515 | Hex Bolt, 1/2NC x 1-1/2" | 8 | 10 | Z61201 | Marker Lamp, Round x Red | 2 |
| 3 | Z71530 | Hex Bolt, 1/2NC x 3" | 2 | 11 | Z61202 | Grommet, Round x Open Back | 2 |
| 4 | Z72251 | Hex Lock Nut, 1/2NC | 10 | 12 | Z61301 | License Lamp, White | 1 |
| 5 | Z73151 | SAE Washer, 1/2" | 8 | 13 | Z91316 | 16.5x6.5-8 LRC USA Trail 4on4" | 2 |
| 6 | Z91115-1 | #9 Full Flex Axle, 2200lbs x 54" HF Axle Only | 1 | 14 | Z91512 | Trailer Jack, Side Wind x 2000lbs | 1 |
| 7 | Z91206 | Idler Hub Assy, 1000lbs x 4on4" x 1-1/16" | 2 | 15 | Z91614 | Hitch Coupler, 2" Ball x 2" x 3500lbs | 1 |
| 8 | Z61102 | STT Lamp, Oval | 2 | 16 | Z62101 | Harness, 300 Lights | 1 |

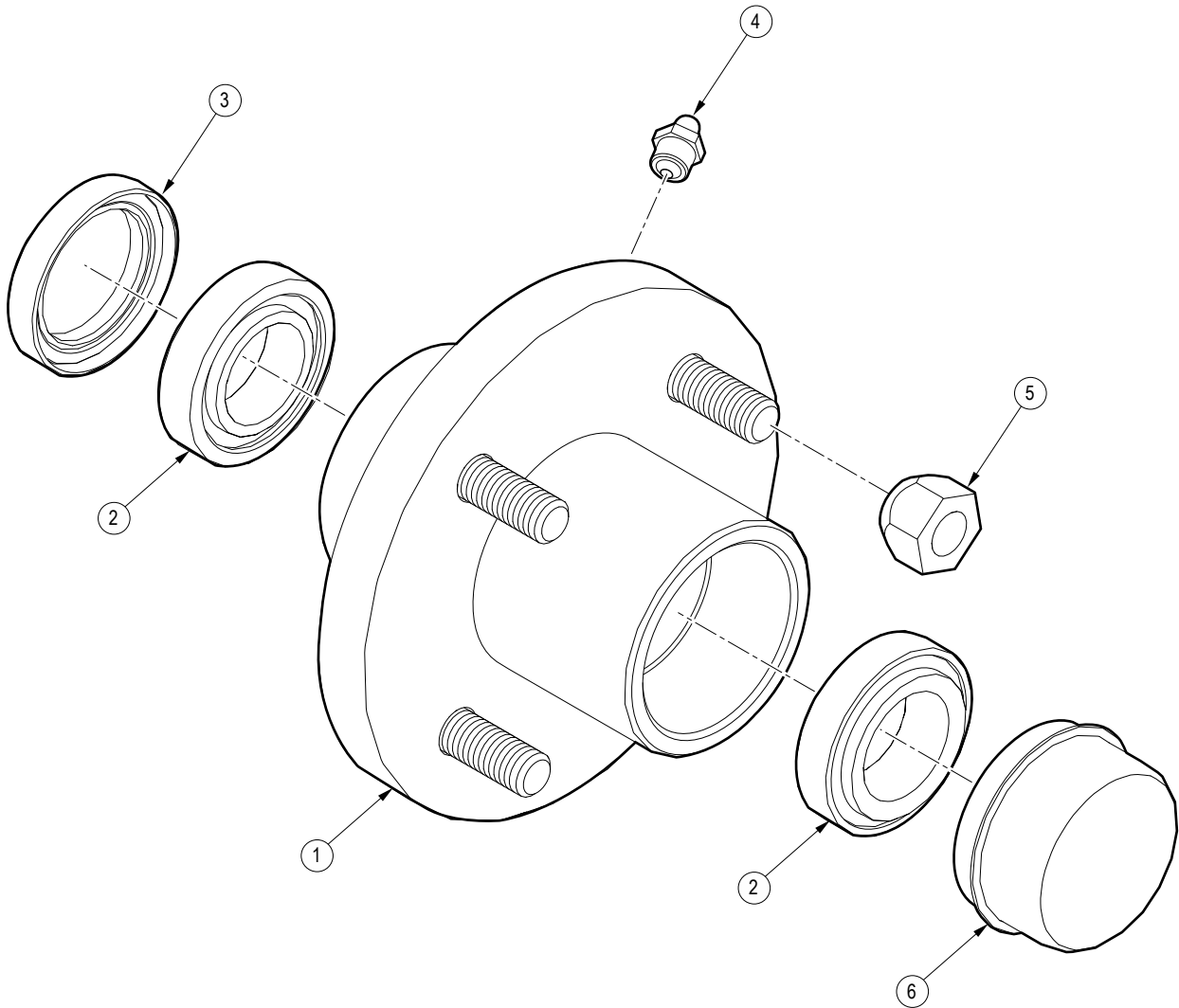
Running Gear S/N 2E9US1118LS060054 and Up



| Item No. | Part No. | Description | Qty |
|----------|----------|---|-----|
| 1 | Z76712 | Self-tapping Screw, #10 x 3/4" | 5 |
| 2 | Z71515 | Hex Bolt, 1/2NC x 1-1/2" | 8 |
| 3 | Z71530 | Hex Bolt, 1/2NC x 3" | 2 |
| 4 | Z72251 | Hex Lock Nut, 1/2NC | 10 |
| 5 | Z73151 | SAE Washer, 1/2" | 8 |
| 6 | Z91115-1 | #9 Full Flex Axle, 2200lbs x 54" HF Axle Only | 1 |
| 7 | Z91206 | Idler Hub Assy, 1000lbs x 4on4" x 1-1/16" | 2 |
| 8 | Z61102 | STT Lamp, Oval | 2 |
| 9 | Z61103 | Grommet, Oval x Open Back | 2 |
| 10 | Z61201 | STT Lamp, Oval | 2 |

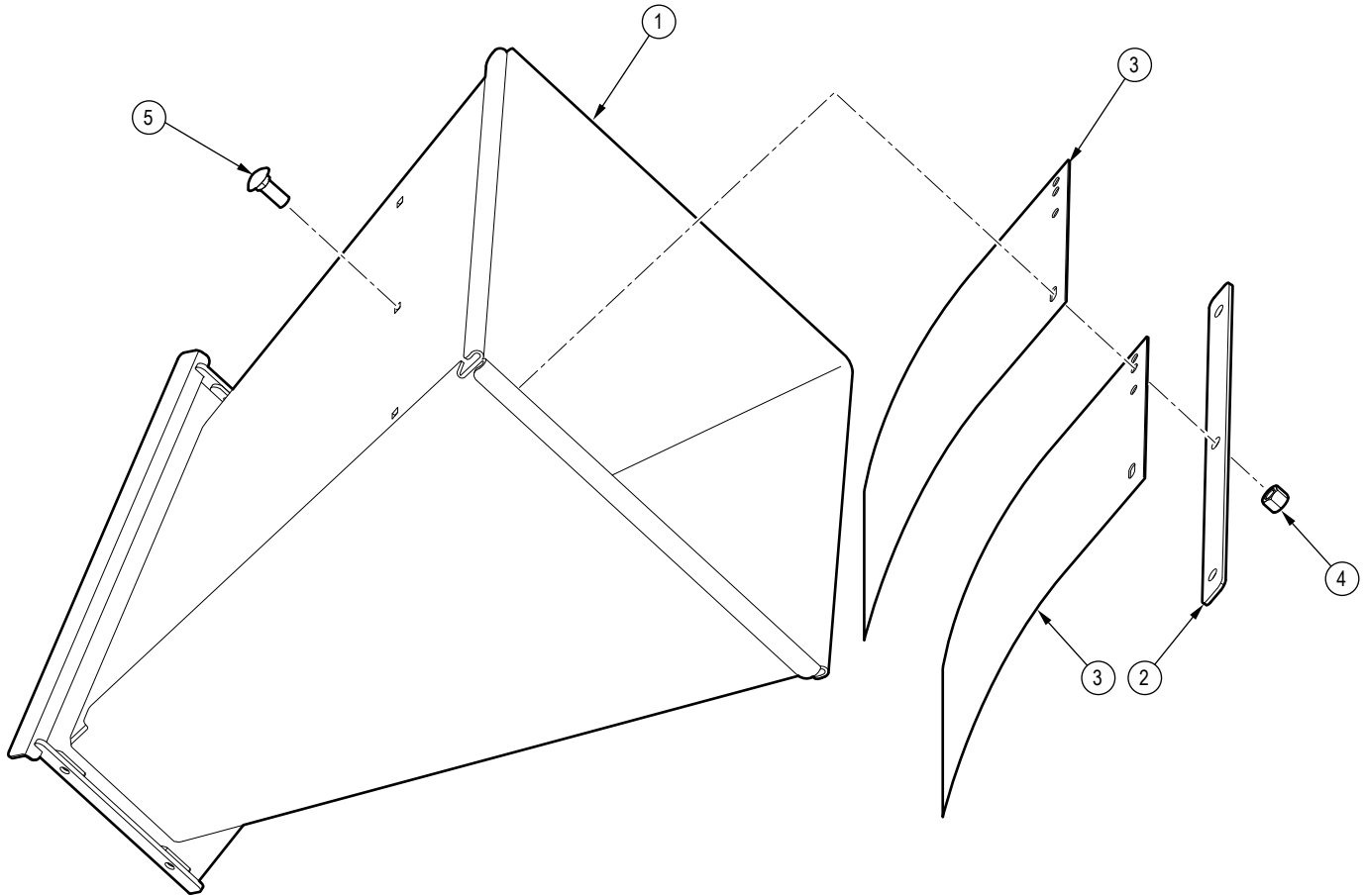
| Item No. | Part No. | Description | Qty |
|----------|----------|---------------------------------------|-----|
| 11 | Z61202 | Grommet, Round x Open Back | 2 |
| 12 | Z61301 | License Lamp, White | 1 |
| 13 | Z91316 | 16.5x6.5-8 LRC USA Trail 4on4" | 2 |
| 14 | Z91512 | Trailer Jack, Side Wind x 2000lbs | 1 |
| 15 | Z91614 | Hitch Coupler, 2" Ball x 2" x 3500lbs | 1 |
| 16 | 1055F001 | BXMT42, Wiring Harness | 1 |
| 17 | Z78301 | Machine Screw, 1/4NC x 3/4" | 14 |
| 18 | Z72211 | Hex Lock Nut, 1/4NC | 15 |
| 19 | Z62819 | Rubberized Wire Clamp, 1/2" | 15 |
| 20 | Z62822 | Rubber Grommet, 3/4" x 1/4" | 1 |

Idler Hub Assembly



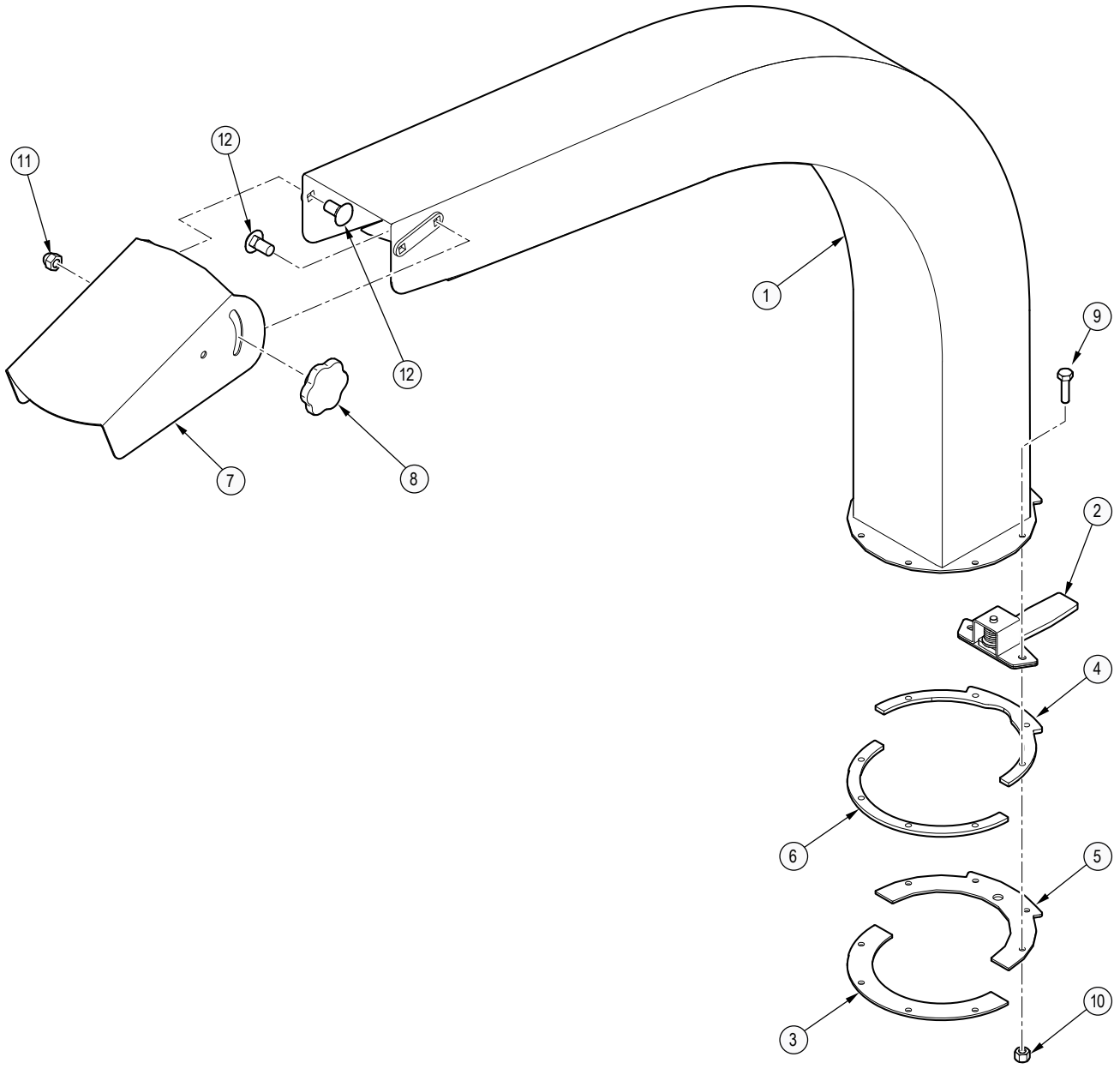
| Item No. | Part No. | Description | Qty |
|----------|----------|-------------------------------|-----|
| 1 | Z91201 | Hub, 1000lbs x 4on4 | 1 |
| 2 | Z23202 | Roller Bearing, L44649 L44610 | 2 |
| 3 | Z28302 | Double Lip Seal, 1-1/16" | 1 |
| 4 | Z29201 | Grease Fitting, MP02 | 1 |
| 5 | Z72931 | Lug Nut, 1/2NF | 4 |
| 6 | Z91801 | Dust Cap, 1.98 Bore | 1 |

Chipper Feed Hopper Flap



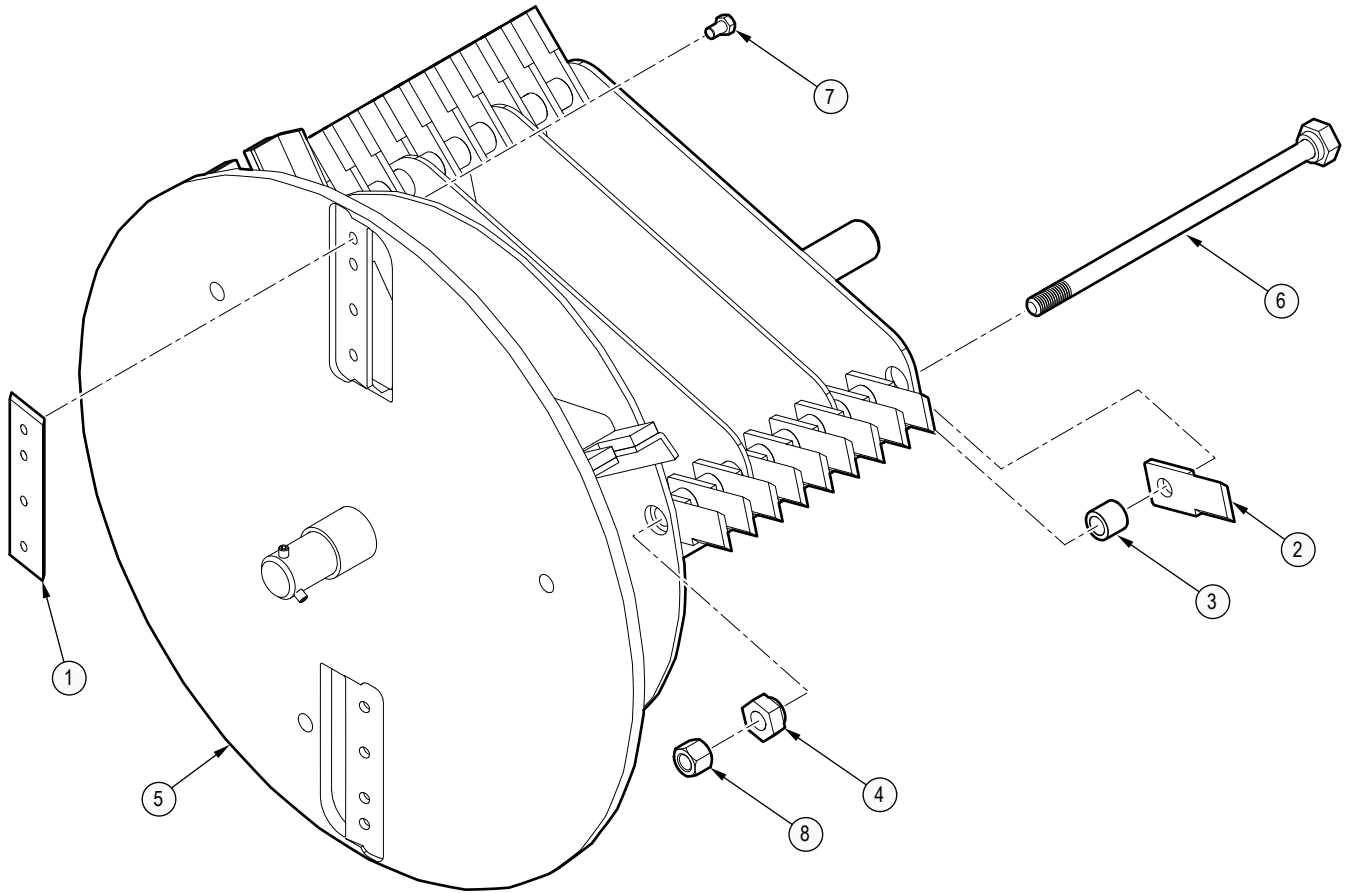
| Item No. | Part No. | Description | Qty |
|----------|----------|---------------------------|-----|
| 1 | 1016W632 | Chipper Feed Hopper | 1 |
| 2 | 1011L151 | Strap, Hopper Flap | 1 |
| 3 | 1011S103 | Flap, Hopper | 2 |
| 4 | Z72231 | Hex Lock Nut, 3/8NC | 3 |
| 5 | Z76231 | Carriage Bolt, 3/8NC x 1" | 3 |

Discharge Chute Assembly



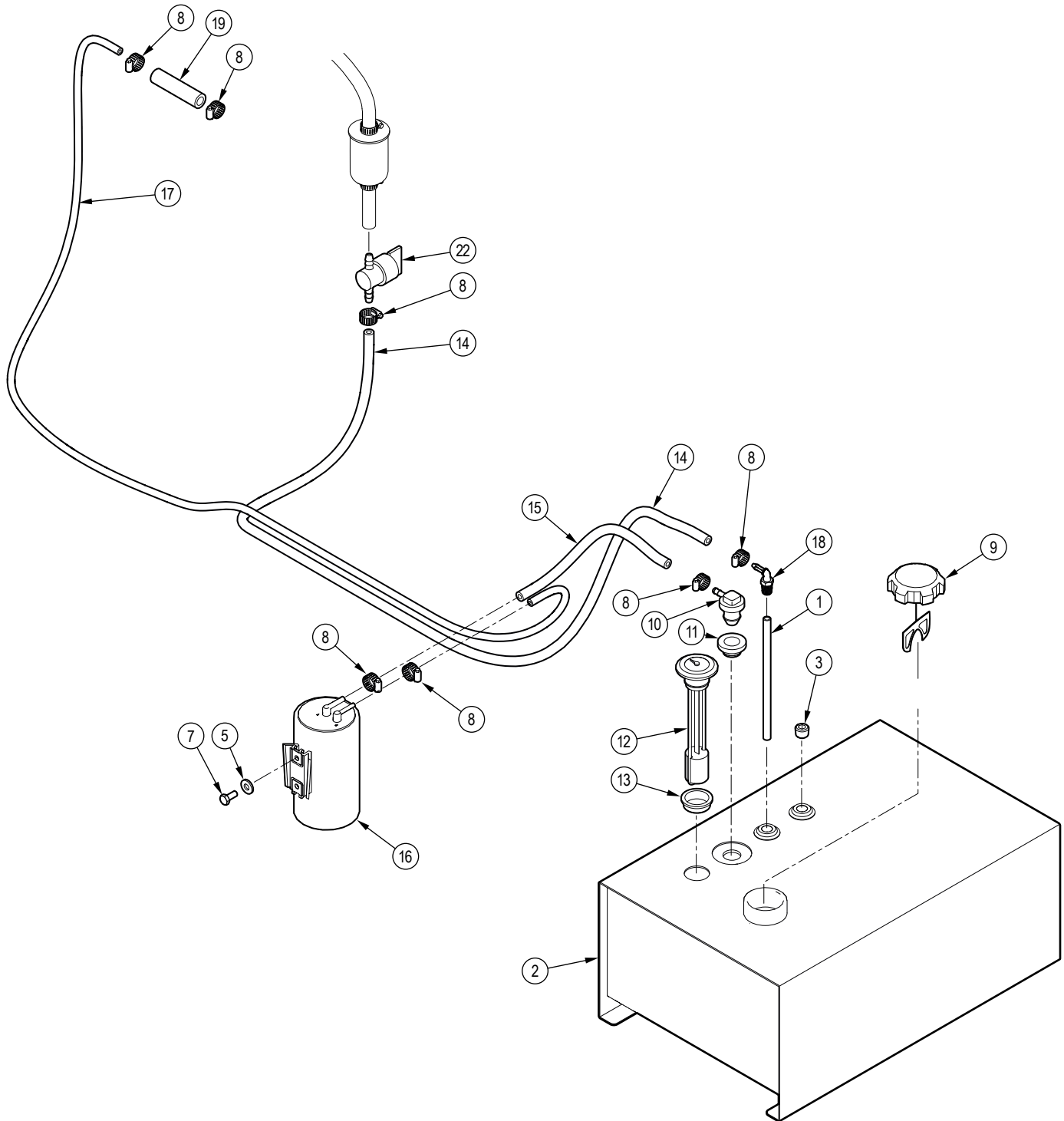
| Item No. | Part No. | Description | Qty | Item No. | Part No. | Description | Qty |
|----------|----------|----------------------|-----|----------|----------|-------------------------------|-----|
| 1 | 1055W507 | Discharge Chute | 1 | 7 | 1055L533 | Deflector, Discharge Chute | 1 |
| 2 | 1012W208 | Assembly, Hood Latch | 1 | 8 | Z19313 | Hand Knob, 5/16NC Female Stud | 2 |
| 3 | 1016L027 | Plate, Spacer Ring | 1 | 9 | Z71110 | Hex Bolt, 1/4NC x 1" | 8 |
| 4 | 1016L029 | Plate, Spacer Ring | 1 | 10 | Z72211 | Hex Lock Nut, 1/4NC | 8 |
| 5 | 1016L030 | Plate, Hood Capture | 1 | 11 | Z72221 | Hex Lock Nut, 5/16NC | 2 |
| 6 | 1016L034 | Plate, Hood Capture | 1 | 12 | Z76221 | Carriage Bolt, 5/16NC x 3/4" | 4 |

Rotor



| Item No. | Part No. | Description | Qty |
|----------|----------|---------------------------|-----|
| 1 | 1011M103 | Knife, 4" Rotor | 2 |
| 2 | 1016M608 | Knife, BXM Shredder | 30 |
| 3 | 1016M613 | Spacer, Shredder | 27 |
| 4 | 1016M627 | Bushing, Retainer Rod | 3 |
| 5 | 1016W603 | Rotor | 1 |
| 6 | 1016W626 | Retainer Pin | 3 |
| 7 | Z71372G8 | Hex Bolt, 3/8NF x 5/8" G8 | 8 |
| 8 | Z72261 | Hex Lock Nut, 5/8NC | 3 |

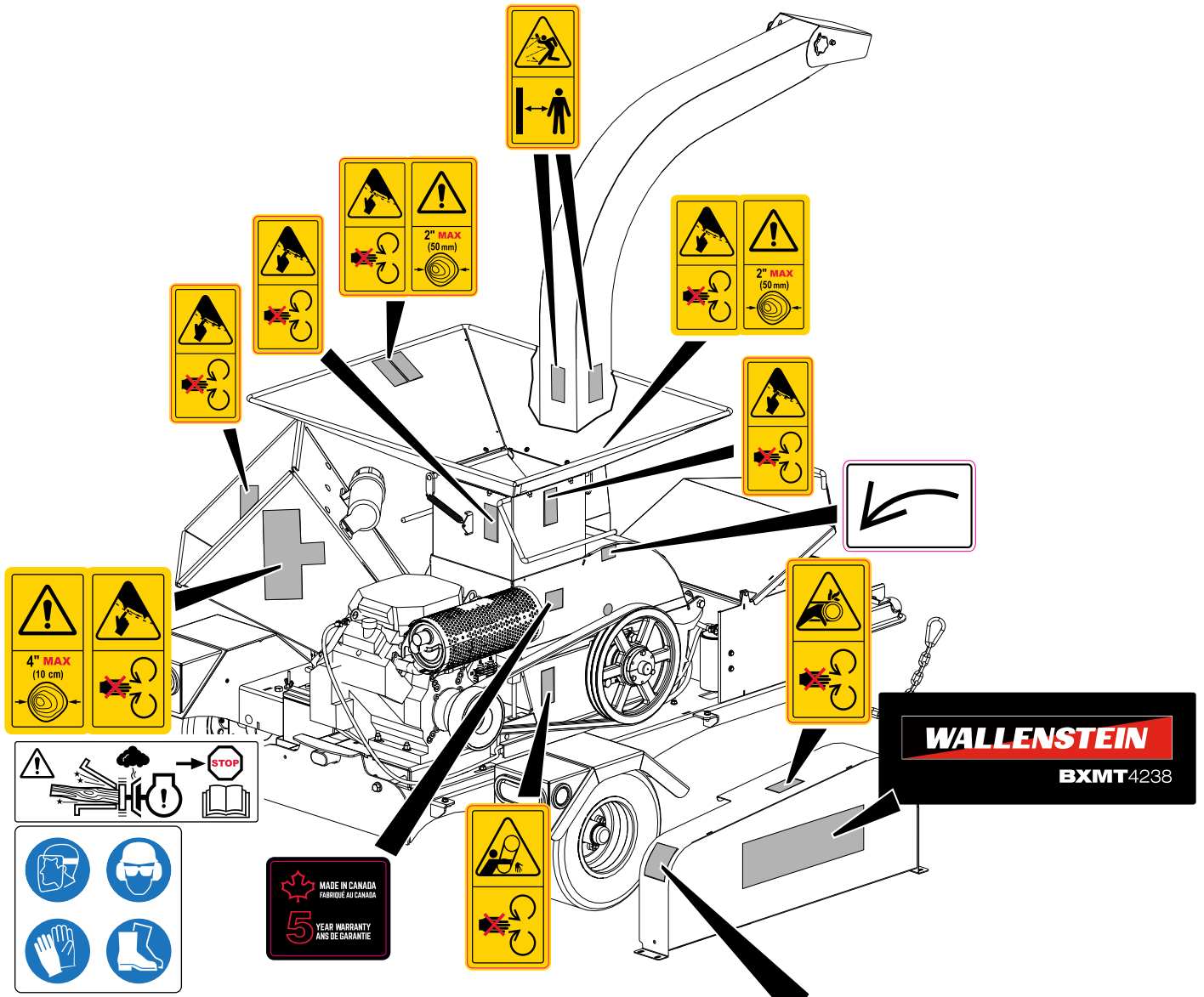
Fuel Tank Assembly and Lines



| Item No. | Part No. | Description | Qty |
|----------|----------|--|-----|
| 1 | 1052S501 | Fuel Pickup Tube | 1 |
| 2 | 1052W501 | Fuel Tank, Trailer Chipper | 1 |
| 3 | Z51194 | Socket Plug, MP 04 | 1 |
| 5 | Z73111 | SAE Washer, 1/4" | 2 |
| 7 | Z77130 | Hex Bolt, M6x1.0 x 14mm | 2 |
| 8 | Z79405 | Hose Clamp, SAE #4 (5/8") BXT6224 | 11 |
| 9 | Z93108 | EPA Ratchet Fuel Cap, Unleaded Fuel x Unvented with Tether | 1 |
| 10 | Z93110 | EPA Remote Vent, HB04 | 1 |
| 11 | Z93111 | Vent Grommet For Z93110 | 1 |
| 12 | Z93113 | Fuel Gauge, Grommet Mount x 7" | 1 |

| Item No. | Part No. | Description | Qty |
|----------|----------|--|-----|
| 13 | Z93115 | Fuel Gauge Grommet for Z93113 | 1 |
| 14 | Z93307 | EPA Fuel Line, 1/4" x 55" BXT6228su | 1 |
| 15 | Z93307 | EPA Fuel Line, 1/4" x 8" | 1 |
| 16 | Z93309 | EPA Carbon Canister, 652cc | 1 |
| 17 | Z93310 | EPA Fuel Line, 3/16" x 68" BXT6224 A | 1 |
| 18 | Z93312 | Plastic Elbow 90, MP x HB 0404 BXT6224 A | 1 |
| 19 | Z93313 | EPA Fuel Line, 3/16" | 1 |
| 22 | Z93301 | Fuel Shut-Off Valve, 1/4" BXT6228su Only | 1 |
| 23 | Z93307 | EPA Fuel Line, 1/4" ID x 4" BXT6228su Only | 1 |

Decal Layout



| | |
|-------------------|--|
| | |
| 4" MAX (10 cm) | |

| | |
|--|-------------------|
| | |
| | 2" MAX (50 mm) |

| | |
|--|-------------------|
| | |
| | 2" MAX (50 mm) |

| | | | |
|--|--|--|--|
| | | | |
| | | | |

| | |
|--|--|
| | |
| | |

MADE IN CANADA
FABRIQUE AU CANADA

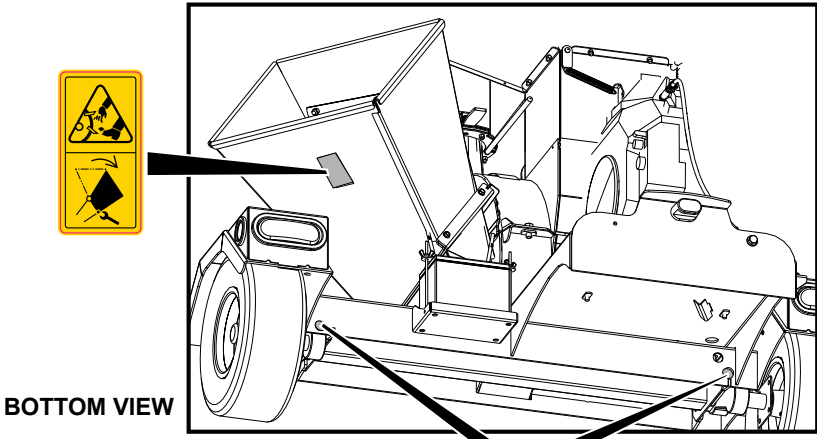
5 YEAR WARRANTY
ANS DE GARANTIE

| |
|--|
| |
| |

WALLENSTEIN

BXMT4238

| | | | |
|--|---------|--|--|
| | | | |
| | MAX RPM | | |
| | LOW RPM | | |



| |
|--|
| |
| |




Common Bolt Torque Values

Checking Bolt Torque

The tables shown give correct torque values for various bolts and capscrews. Tighten all bolts to the torque values specified in the table, unless indicated otherwise. Check tightness of bolts periodically.

IMPORTANT! If replacing hardware, use fasteners of the same grade.

IMPORTANT! Torque figures indicated in the table are for non-greased or non-oiled threads. Do not grease or oil threads unless indicated otherwise. When using a thread locker, increase torque values by 5%.

 **NOTE:** Bolt grades are identified by their head markings.

Imperial Bolt Torque Specifications

| Bolt Diameter | Torque Value | | | | | |
|---------------|--------------|-----|-----------|-----|-----------|------|
| | SAE Gr. 2 | | SAE Gr. 5 | | SAE Gr. 8 | |
| | lbf•ft | N•m | lbf•ft | N•m | lbf•ft | N•m |
| 1/4" | 6 | 8 | 9 | 12 | 12 | 17 |
| 5/16" | 10 | 13 | 19 | 25 | 27 | 36 |
| 3/8" | 20 | 27 | 33 | 45 | 45 | 63 |
| 7/16" | 30 | 41 | 53 | 72 | 75 | 100 |
| 1/2" | 45 | 61 | 80 | 110 | 115 | 155 |
| 9/16" | 60 | 95 | 115 | 155 | 165 | 220 |
| 5/8" | 95 | 128 | 160 | 215 | 220 | 305 |
| 3/4" | 165 | 225 | 290 | 390 | 400 | 540 |
| 7/8" | 170 | 230 | 420 | 570 | 650 | 880 |
| 1" | 225 | 345 | 630 | 850 | 970 | 1320 |



SAE Gr. 2



SAE Gr. 5



SAE Gr. 8

Metric Bolt Torque Specifications

| Bolt Diameter | Torque Value | | | |
|---------------|--------------|-------|----------|-------|
| | Gr. 8.8 | | Gr. 10.9 | |
| | lbf•ft | N•m | lbf•ft | N•m |
| M3 | 0.4 | 0.5 | 1.3 | 1.8 |
| M4 | 2.2 | 3 | 3.3 | 4.5 |
| M6 | 7 | 10 | 11 | 15 |
| M8 | 18 | 25 | 26 | 35 |
| M10 | 37 | 50 | 52 | 70 |
| M12 | 66 | 90 | 92 | 125 |
| M14 | 83 | 112 | 116 | 158 |
| M16 | 166 | 225 | 229 | 310 |
| M20 | 321 | 435 | 450 | 610 |
| M30 | 1,103 | 1 495 | 1,550 | 2 100 |



8.8



10.9

Wheel Lug Torque Values

It is extremely important safety procedure to apply and maintain proper wheel mounting torque on your trailer axle. Torque wrenches are the best method to assure the proper amount of torque is being applied to a fastener.

Wheel lugs should be torqued before first road use and after each wheel removal. Check and re torque after the first 10 miles (16 km), 25 miles (40 km), and again at 50 miles (80 km). Check periodically thereafter.

NOTE: *Wheel lugs must be applied and maintained at the proper torque levels to prevent loose wheels, broken studs, and possible dangerous separation of wheels from your axle.*

- Start all lugs by hand to prevent cross threading.
- Tighten lugs in sequence, per wheel lug torque sequence chart.
- The tightening of the fasteners should be done in stages. Following the recommended sequence, tighten fasteners per wheel torque requirements chart.

| Wheel Lug Nut Torque | | | | |
|----------------------|---------------|------------------|------------------|--------------------|
| Wheel Size | Units | 1st Stage | 2nd Stage | 3rd Stage |
| 8" | lbf•ft N•m | 12–20 16–26 | 30–35 39–45.5 | 45–55 58.5–71.5 |
| 12" | lbf•ft N•m | 20–25 26–32.5 | 35–40 45.5–52 | 50–60 65–78 |
| 13" | lbf•ft N•m | 20–25 26–32.5 | 35–40 45.5–52 | 50–60 65–78 |
| 14" | lbf•ft N•m | 20–25 26–32.5 | 50–60 65–78 | 90–120 117–156 |
| 15" | lbf•ft N•m | 20–25 26–32.5 | 50–60 65–78 | 90–120 117–156 |
| 16" | lbf•ft N•m | 20–25 26–32.5 | 50–60 65–78 | 90–120 117–156 |

Wheel Lug Torque Pattern

