

PARTS MANUAL

Serial number 172S00001 to 172S00755, 1100000 and up

BX72S Wood Chipper

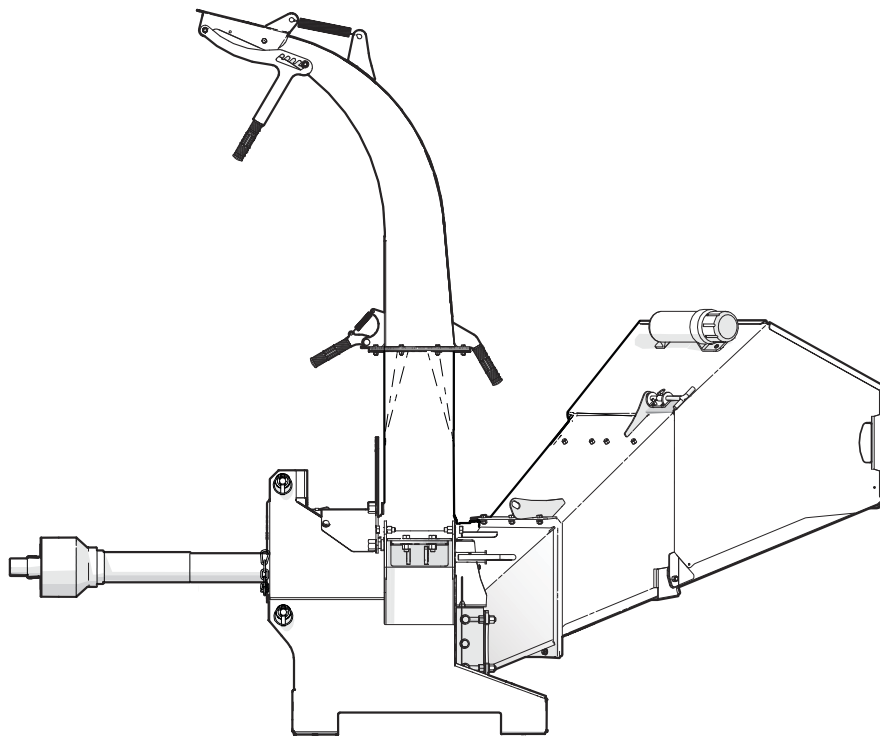


Table of Contents

Introduction3
Model and Serial Number Location.....3
Upper Rotor Housing4
Discharge Chute.....5
Rotor Assembly6
Lower Rotor Housing7
Lower Rotor Housing8
Chipper Hopper.....9
Ledger Knife Components.....10
Label Locations - Left Side11
Label Locations - Right Side.....12
Accessories13
Bolt Torque14

Introduction

! WARNING!

For safety, operation, and maintenance information, see the Operator’s Manual for your product.

Only qualified people are approved to maintain the machine.

! WARNING!

Replace all safety labels that are missing, damaged, or illegible. If a component is replaced and it has a safety label on it, apply a safety label to the new component. If a person operates a machine with missing, damaged, or illegible safety labels it puts them at risk of serious injury or death.

W100

This document provides information about the original equipment manufacturer (OEM) components (parts). Always replace a part with the correct OEM part. For service, support, or to order parts, contact your local Wallenstein Equipment dealer or distributor.

Always provide the model and serial number of your Wallenstein product when you order parts, or request service or other information. The model and serial number location is shown in the following illustration.

Record the model and serial number of your product here:

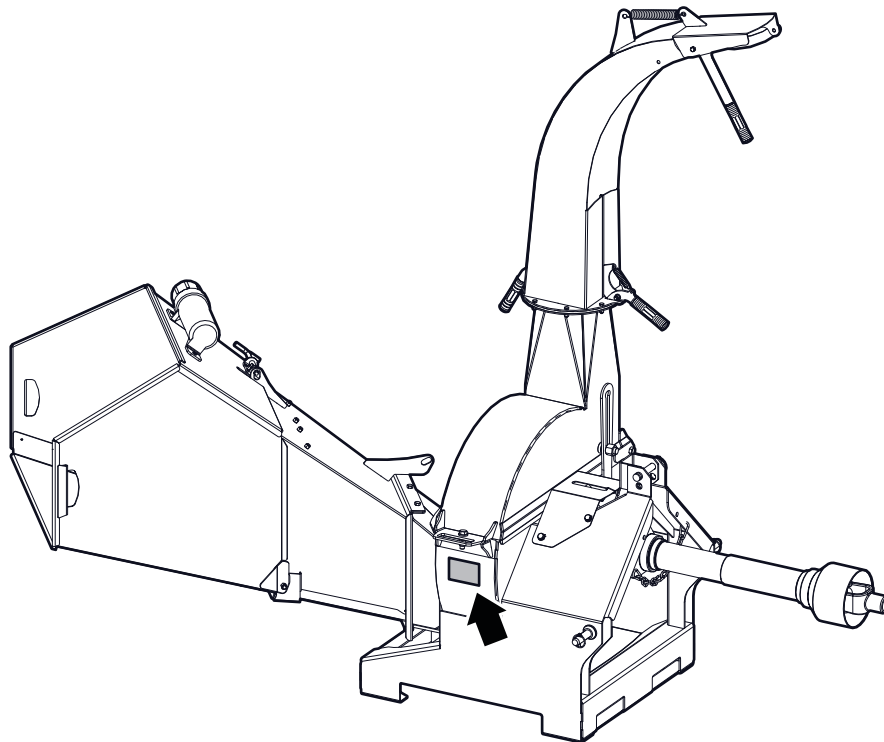
Model	
Serial Number	

The information contained in this document was current at the revision date noted on the bottom of each page. Wallenstein Equipment reserves the right to change product specifications at any time without notice. If your product specifications are different from the information in this document, contact your local dealer or distributor. To find a local dealer or distributor, go to WallensteinEquipment.com and select **Dealer Locator** at the bottom of the page.

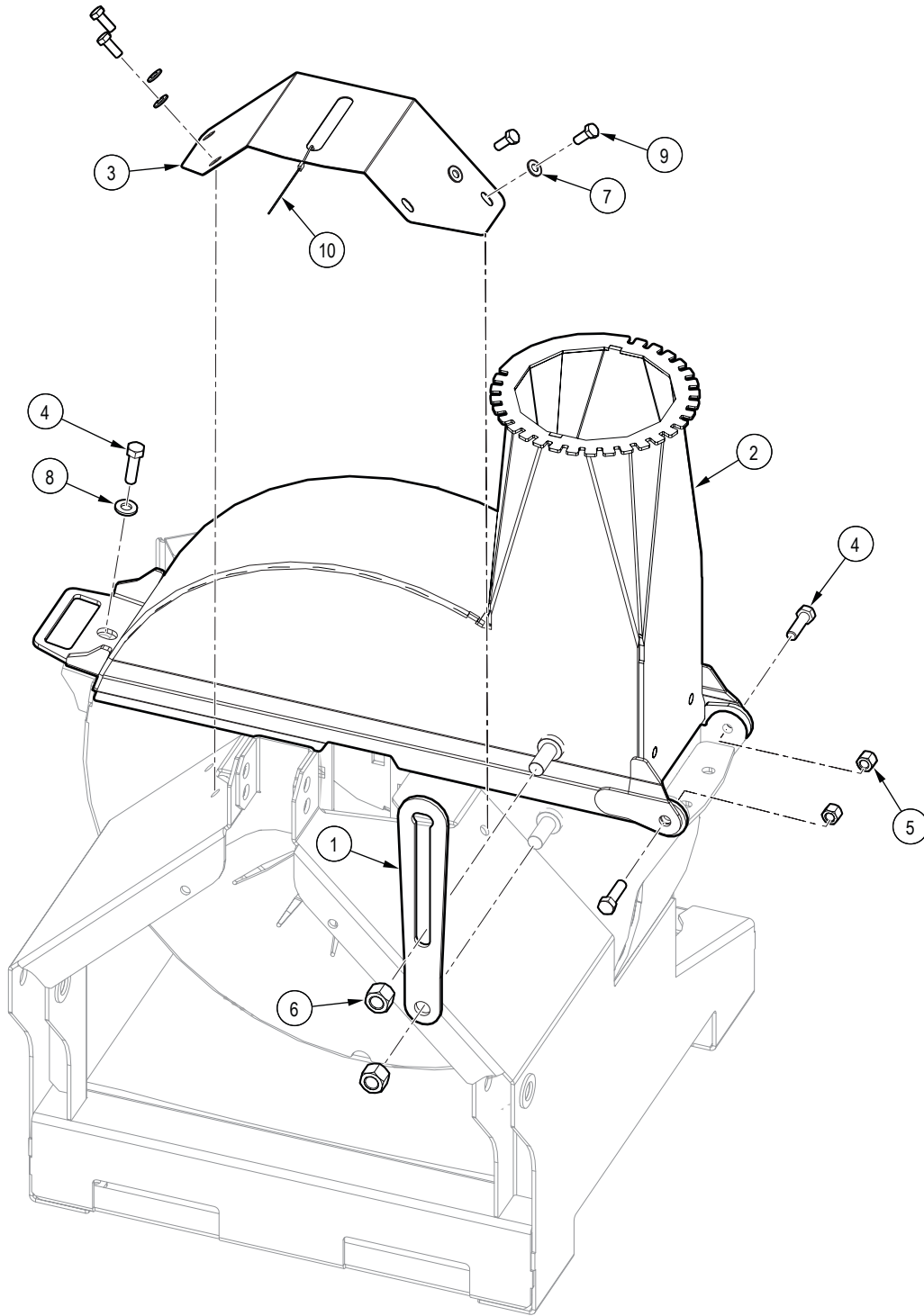
Wallenstein Equipment Inc. • © 2024. All rights reserved.

No part of this work may be copied, reproduced, replaced, distributed, published, displayed, modified, or transferred in any form or by any means except with the prior permission of Wallenstein Equipment Inc.

Model and Serial Number Location



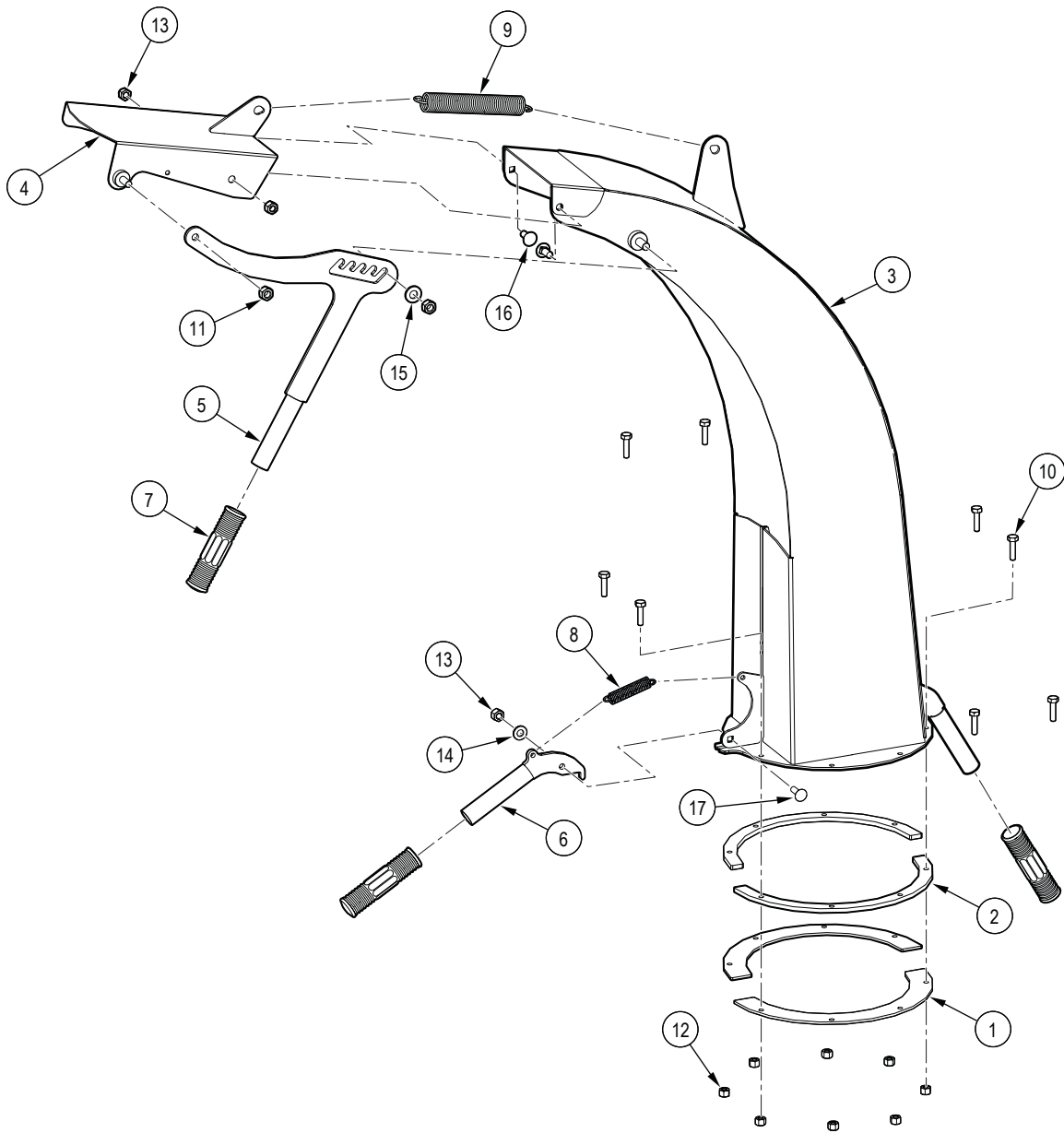
Upper Rotor Housing



Item	Part number	Description	Quantity
1	1023L155	Rotation Stop	1
2	1025W112	Upper Housing	1
3	1024L154	PTO Guard	1
4	Z71517	Hex Bolt, 1/2NC x 1-3/4"	3
5	Z72251	Hex Lock Nut, 1/2NC	2
6	Z72271	Hex Lock Nut, 3/4NC	2

Item	Part number	Description	Quantity
7	Z73131	SAE Washer, 3/8"	4
8	Z73151	SAE Washer, 1/2"	1
9	Z77162	Hex Bolt, M10 x 1.5 x 25 mm	4
10	Z92110	Aircraft Cable, 1/16" x 24"	1

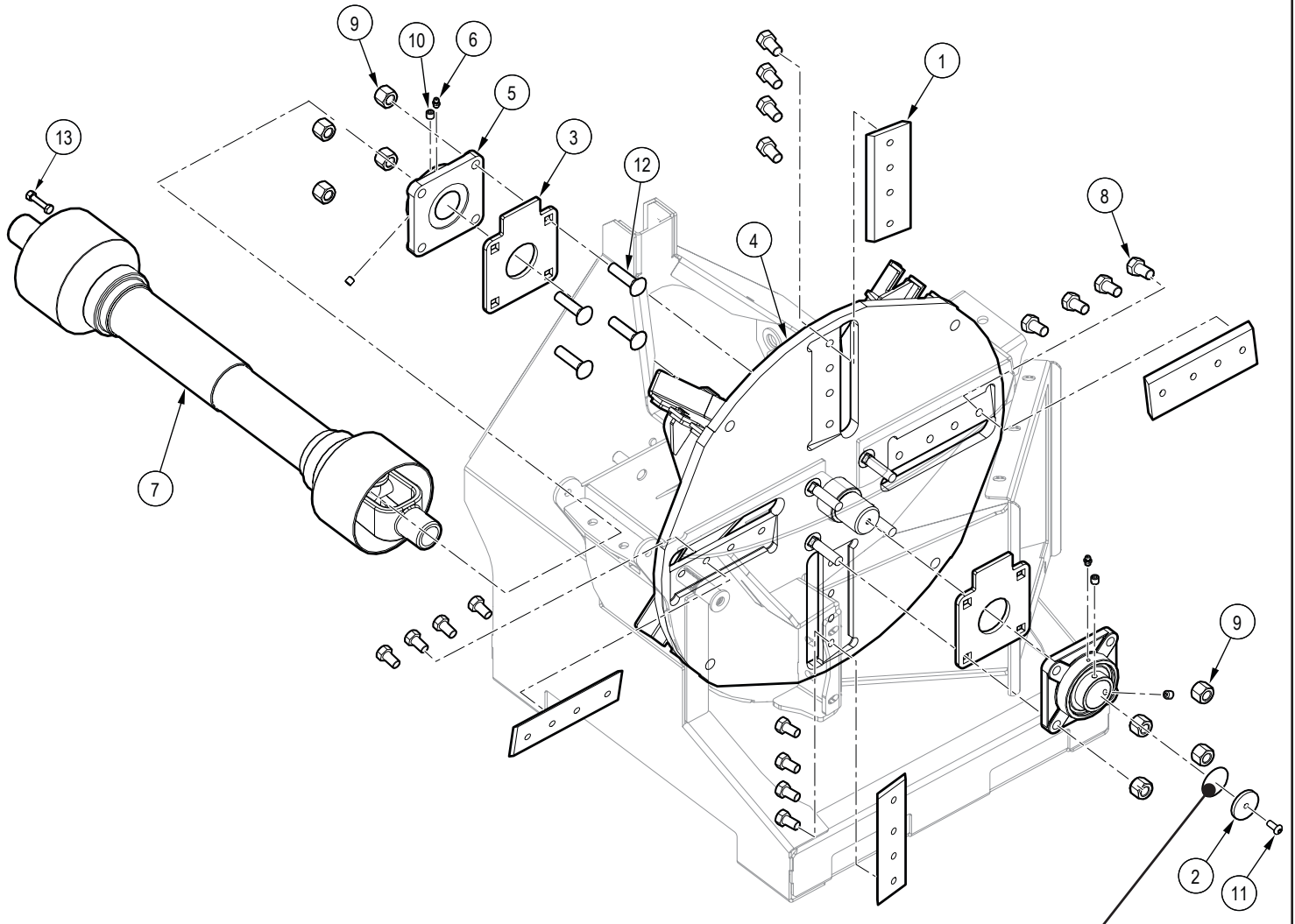
Discharge Chute



Item	Part number	Description	Quantity
1	1023L291	Hood Capture Ring	2
2	1023L292	Spacer Ring	2
3	1023W223	Discharge Chute	1
4	1023W224	Discharge Deflector	1
5	1023W226	Deflector Handle	1
6	1024W108	Discharge Latch	1
7	Z19321	Grip, 1" x 5"	3
8	Z31305	Extension Spring, 5/8" OD x 3" x 0.08"	1
9	Z31403	Extension Spring, 27 mm OD x 178 mm x 0.105"	1

Item	Part number	Description	Quantity
10	Z71110	Hex Bolt, 1/4NC x 1"	8
11	Z72231	Hex Nut, 3/8NC	2
12	Z72211	Hex Lock Nut, 1/4NC	8
13	Z72221	Hex Lock Nut, 5/16NC	3
14	Z73122	SAE Washer, 5/16"	1
15	Z73131	SAE Washer, 3/8"	1
16	Z76221	Carriage Bolt, 5/16NC x 3/4"	2
17	Z76225	Carriage Bolt, 5/16NC x 1"	1

Rotor Assembly



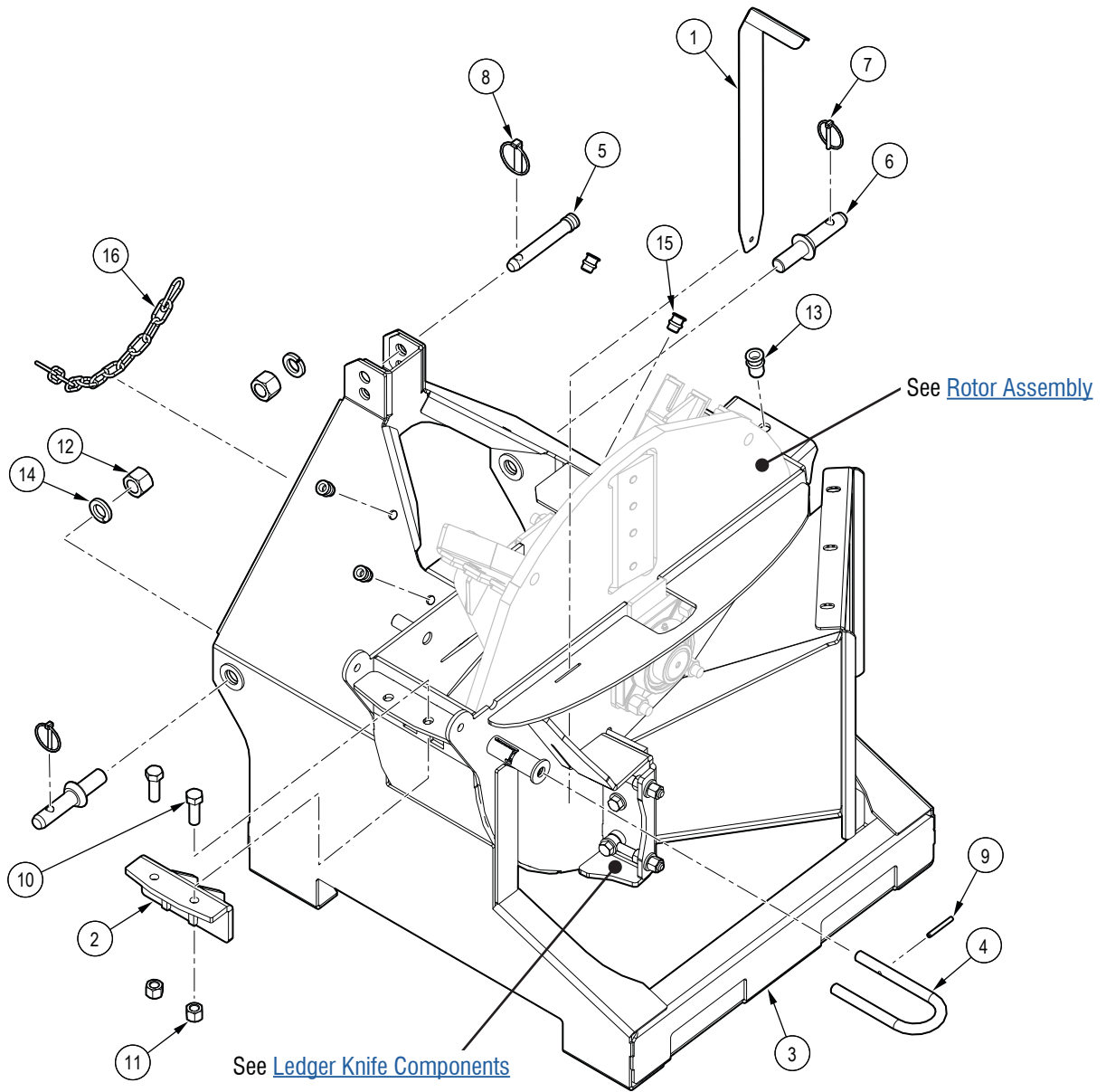
Clockwise rotation label
See [Label Locations - Left Side](#)

Item	Part number	Description	Quantity
1	1012M203	Rotor Knife, BX62	4
2	1021S102	Rotation Indicator Cover	1
3	1023L145	Bearing Plate, Hopper Side	2
4	1025W101	Rotor, BX72S	1
5	Z25203	4 Bolt Flange Bearing	2
6	Z29202	Grease Zerk 1/4NF	2
7	Z44504	PTO Shaft	1
8	Z71572G8	Hex Bolt, 1/2NF x 7/8" G8	16

Item	Part number	Description	Quantity
9	Z72261G8	Hex Lock Nut, 5/8NC G8	8
10	Z74132	Set Screw, 3/8NF x 3/8"	4
11	Z75351	BHCS, 5/16NF x 3/4"	1
12	Z76266G8	Z76266G8 Carriage Bolt, 5/8NC x 2-1/4" G8	8
13	Z19407	Shearbolt, M10x1.5X55 mm G10.9 with locknut (package of 5)	1

Lower Rotor Housing

Serial number 172S00001 to 172S00402.

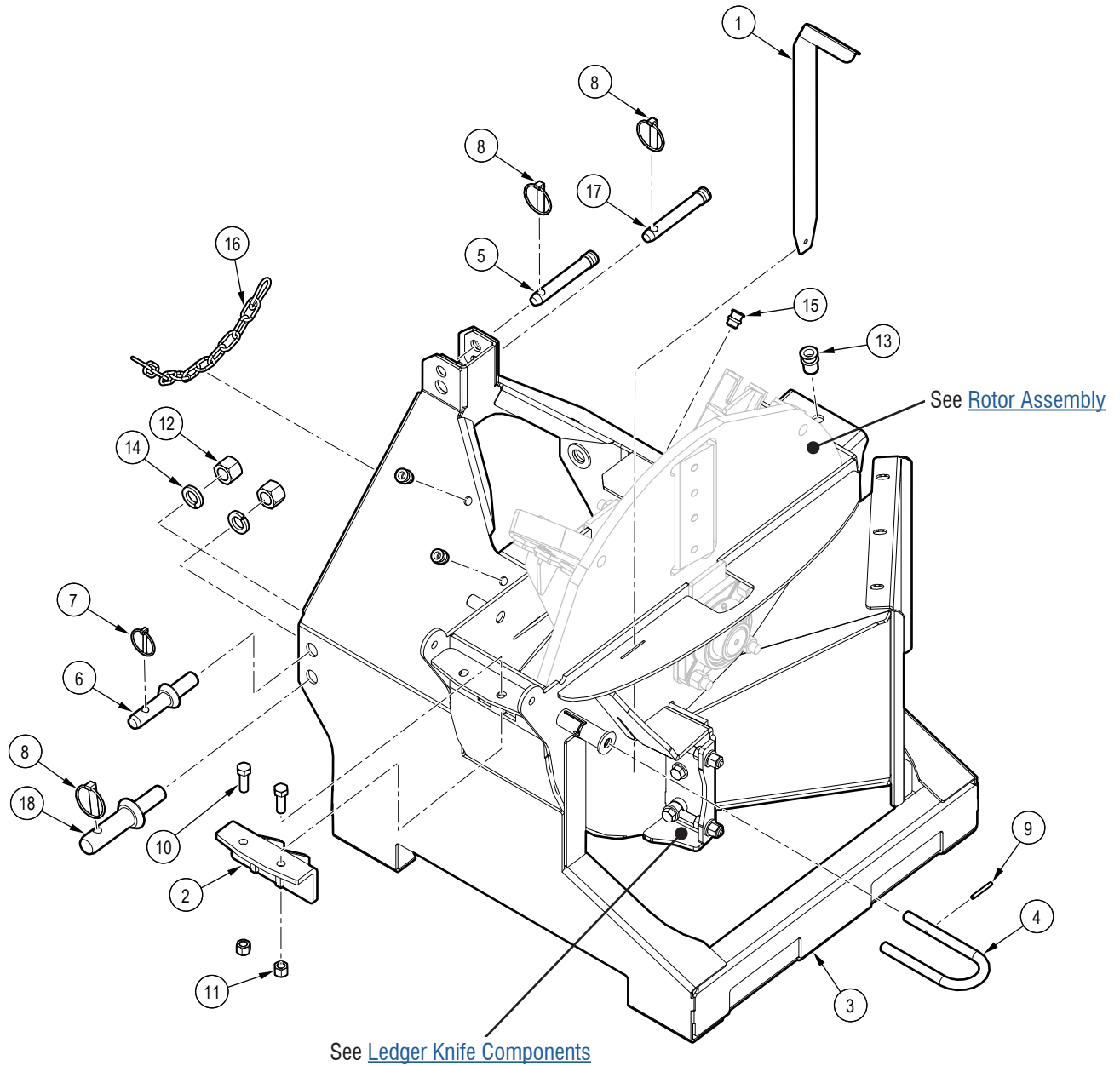


Item	Part number	Description	Quantity
1	1012L269	Gauge, Ledger Setting	1
2	1012W204	Twig Breaker	1
3	1025W102	Lower Housing	1
4	1082M402	Locking Plunger	1
5	Z11122	Toplink Pin, 3/4" x 3-7/8"	1
6	Z11431	Implement Pin, 7/8" x 1-3/4" x 7/8NF	2
7	Z12110	Linchpin, 3/16"	2
8	Z12140	Linchpin, 7/16"	1

Item	Part number	Description	Quantity
9	Z14151	Roll Pin, 3/16" x 1-1/2"	1
10	Z71515	Hex Bolt, 1/2NC x 1-1/2"	2
11	Z72251	Hex Lock Nut, 1/2NC	2
12	Z72282	Hex Lock Nut, 7/8NF	2
13	Z72961	Rivet Nut, 1/2NC x 350	1
14	Z73381	Split Lock Washer, 7/8"	2
15	Z77940	Rivet Nut, M10x1.5 x 313	4
16	Z92310	PTO Support Chain, 3/16" x 1ft with Two Snaps	1

Lower Rotor Housing

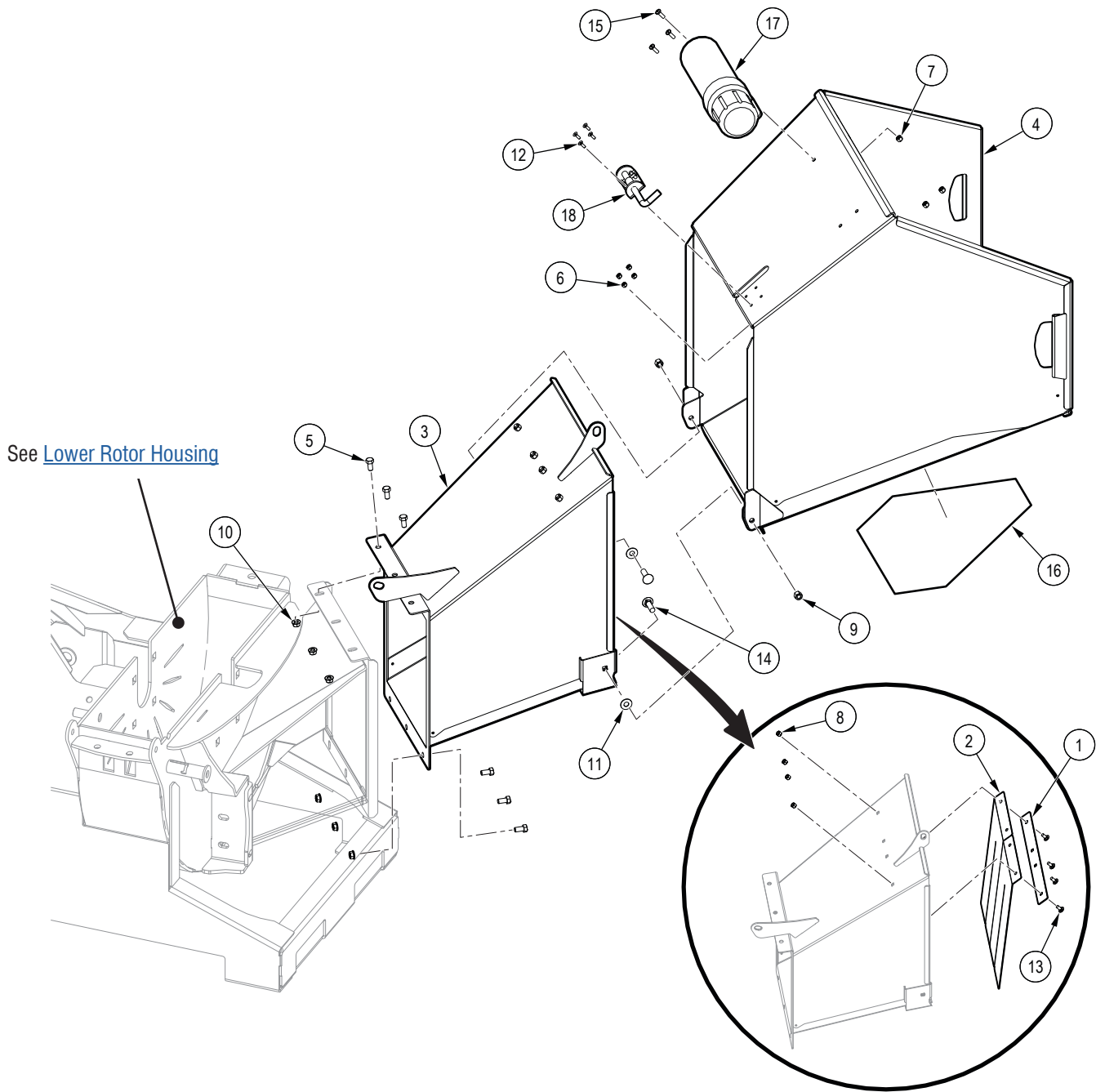
Serial number 172S00403 to 172S00755, 1100000 and up.



Item	Part number	Description	Quantity
1	1012L269	Gauge, Ledger Setting	1
2	1012W204	Twig Breaker	1
3	1025W113	Lower Housing	1
4	1082M402	Locking Plunger	1
5	Z11122	Toplink Pin, 3/4" x 3-7/8"	1
6	Z11431	Implement Pin, 7/8" x 1-3/4" x 7/8NF	2
7	Z12110	Linchpin, 3/16"	2
8	Z12140	Linchpin, 7/16"	4
9	Z14151	Roll Pin, 3/16" x 1-1/2"	1

Item	Part number	Description	Quantity
10	Z71515	Hex Bolt, 1/2NC x 1-1/2"	2
11	Z72251	Hex Lock Nut, 1/2NC	2
12	Z72282	Hex Lock Nut, 7/8NF	4
13	Z72961	Rivet Nut, 1/2NC x 350	1
14	Z73381	Split Lock Washer, 7/8"	4
15	Z77940	Rivet Nut, M10x1.5 x 313	4
16	Z92310	PTO Support Chain, 3/16"	1
17	Z11142	Toplink Pin, 1" x 4-5/16"	1
18	Z11442	Implement Pin, 1-1/8" x 2-1/4" x 7/8	2

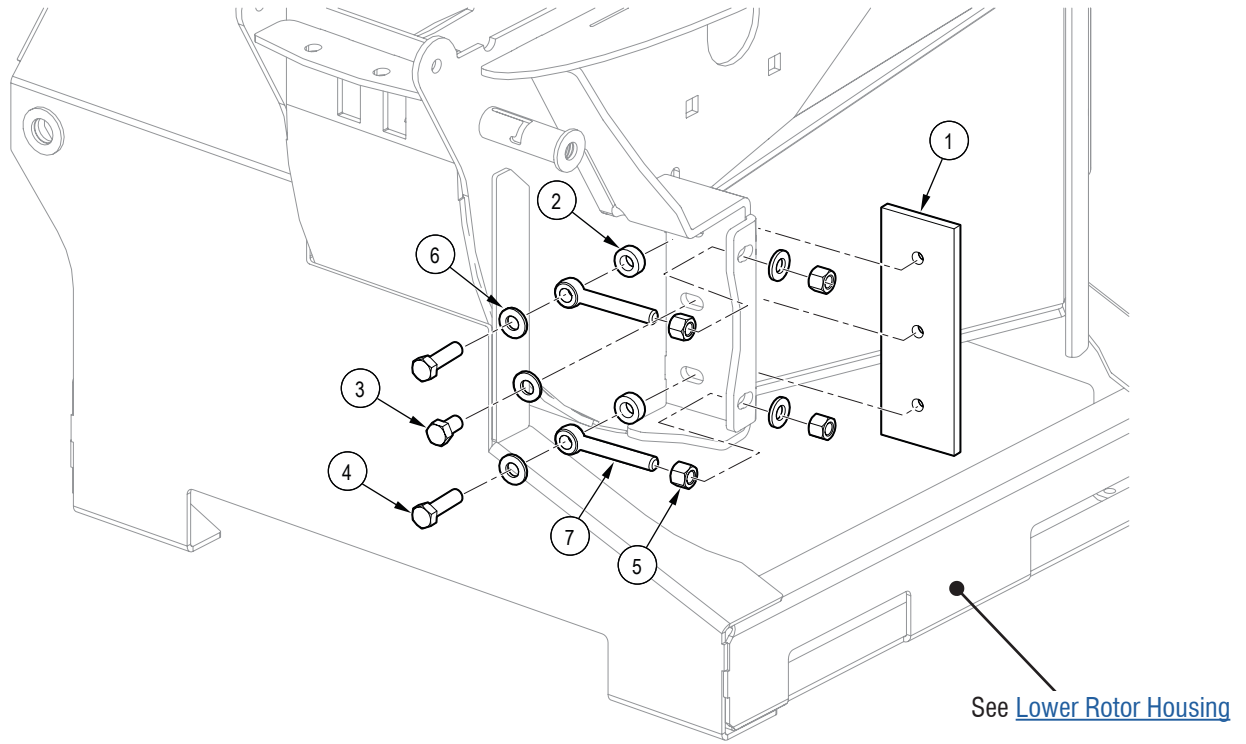
Chipper Hopper



Item	Part number	Description	Quantity
1	1025L156	Flap Trap Plate, BX72S	1
2	1025S108	Hopper Flap, BX72S	2
3	1025W110	Mid Hopper	1
4	1025W111	Folding Hopper	1
5	Z71307	Hex Bolt, 3/8NC x 3/4"	6
6	Z72204	Hex Lock Nut, #10NF	4
7	Z72211	Hex Lock Nut, 1/4NC	3
8	Z72221	Hex Lock Nut, 5/16NC	4
9	Z72231	Hex Lock Nut, 3/8NC	2

Item	Part number	Description	Quantity
10	Z72531	Serrated Flange Locknut, 3/8NC	6
11	Z73233	PTFE Washer, 3/8" x 1/16"	2
12	Z75204	FHCS, #10NF x 5/8"	4
13	Z76221	Carriage Bolt, 5/16NC x 3/4"	4
14	Z76232	Carriage Bolt, 3/8NC x 1-1/4"	2
15	Z78301	Machine Screw, 1/4NC x 3/4"	3
16	Z94601	Slow-Moving Vehicle (SMV) Sign	1
17	Z96503	Manual Tube, 3-1/2" Short	1
18	Z18207	Spring Latch Pin 1/2 x 1" Stroke	1

Ledger Knife Components

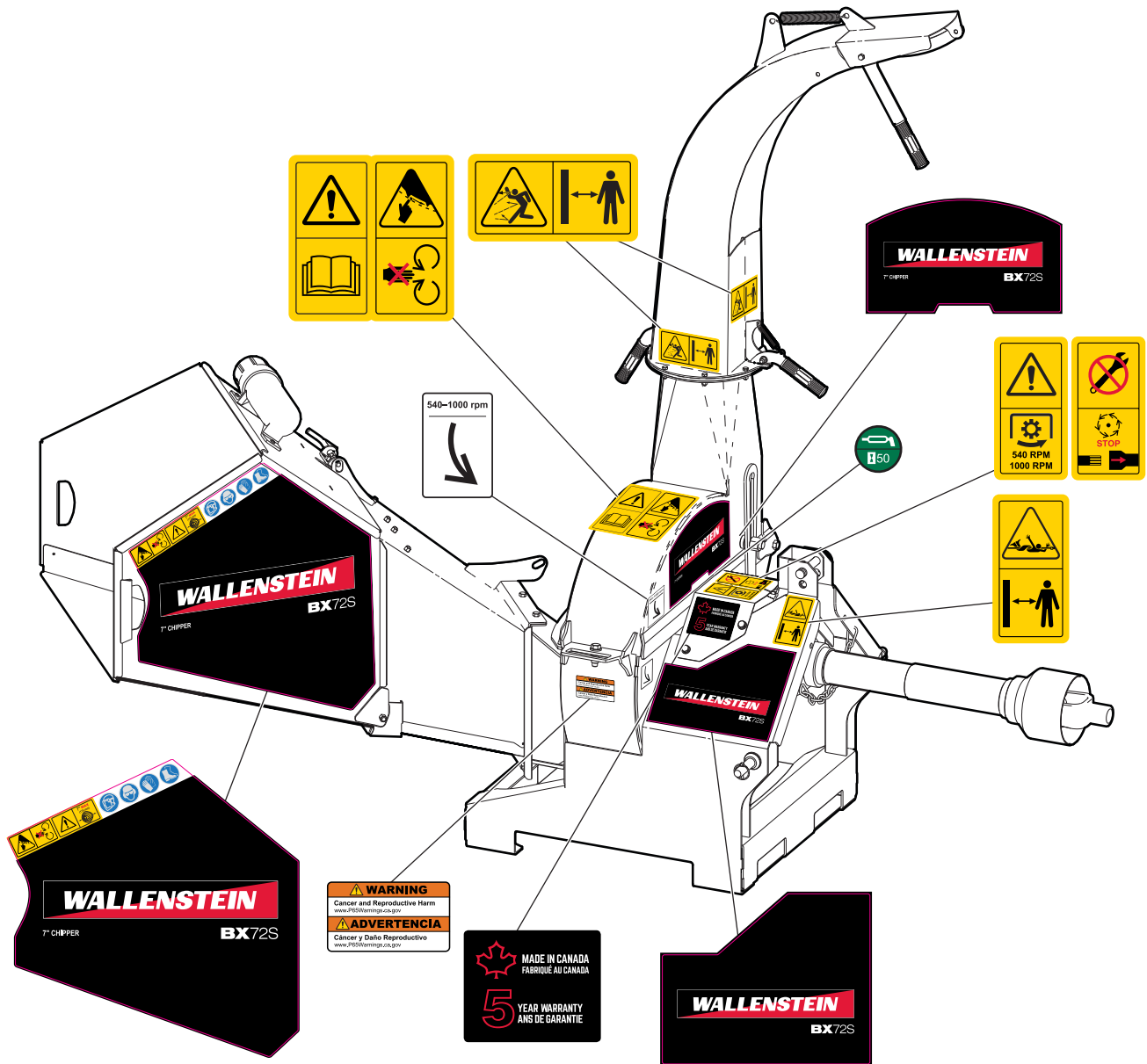


Item	Part number	Description	Quantity
1	1012M204	Knife, BX62 Ledger	1
2	1023L150	Ledger Washer	2
3	Z71572G8	Hex Bolt, 1/2NF x 7/8" G8	1
4	Z71579G8	Hex Bolt, 1/2NF x 1-3/4" G8	2

Item	Part number	Description	Quantity
5	Z72251	Hex Lock Nut, 1/2NC	4
6	Z73151	SAE Washer, 1/2"	5
7	Z76553	Rod End, 1/2NC x 3-1/2" Full Threads	2

Label Locations - Right Side

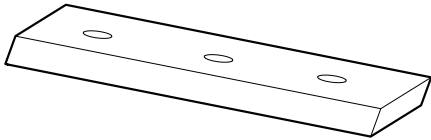
IMPORTANT! If you replace a part that has a safety label on it, you must apply a new safety label. Immediately replace safety labels that are damaged, have been removed, or are illegible.



Accessories

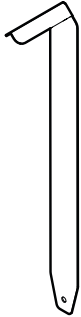
For price and availability, contact your local Wallenstein dealer or distributor.

For accessory installation instructions, go to WallensteinEquipment.com/Support.aspx, and then select **Accessories**.



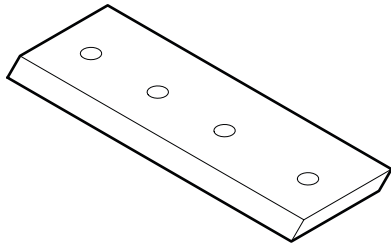
Ledger Knife
1012M204

A replacement ledger knife.



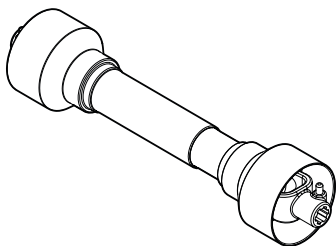
Ledger Knife Clearance Gauge
1012L269

Easily set the correct clearance when you change or adjust the ledger knife or rotor knives.



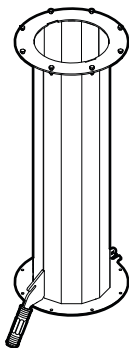
Reversible Rotor Knife
1012M203

A replacement reversible rotor knife.



PTO Shaft (1,000 rpm)
Z44506

Series B5 x 55-1/4 x 21 spline power take-off shaft.



30" Discharge Height Extension
CHE100

A discharge chute height extension for use with tractors that have a 1,000 rpm PTO speed. Only available in black.

Bolt Torque

IMPORTANT! If you replace hardware, use fasteners of the same grade.

IMPORTANT! The torque specifications in these tables are for non-greased or non-oiled threads. Do not grease or oil fastener threads unless otherwise indicated. When using a thread lock, increase the specified torque 5%.



Bolt grades are identified by the marks on the bolt head.

The bolt torque specification tables provide the correct torque settings for common bolts and capscrews. Tighten all bolts to the torque that is specified in the table, unless otherwise indicated. Check the bolt tightness periodically.

Imperial Bolt Torque Specifications

Bolt Diameter	Torque					
	SAE Gr. 2		SAE Gr. 5		SAE Gr. 8	
	lbf•ft	N•m	lbf•ft	N•m	lbf•ft	N•m
1/4 inch	6	8	9	12	12	17
5/16 inch	10	13	19	25	27	36
3/8 inch	20	27	33	45	45	63
7/16 inch	30	41	53	72	75	100
1/2 inch	45	61	80	110	115	155
9/16 inch	60	95	115	155	165	220
5/8 inch	95	128	160	215	220	305
3/4 inch	165	225	290	390	400	540
7/8 inch	170	230	420	570	650	880



SAE Gr. 2



SAE Gr. 5



SAE Gr. 8

Metric Bolt Torque Specifications

Bolt Diameter	Torque			
	Gr. 8.8		Gr. 10.9	
	lbf•ft	N•m	lbf•ft	N•m
M3	0.4	0.5	1.3	1.8
M4	2.2	3	3.3	4.5
M6	7	10	11	15
M8	18	25	26	35
M10	37	50	52	70
M12	66	90	92	125
M14	83	112	116	158
M16	166	225	229	310
M20	321	435	450	610
M30	1,103	1,495	1,550	2,100



8.8



10.9



MAKING WORK FEEL MORE LIKE PLAY™

WallensteinEquipment.com

