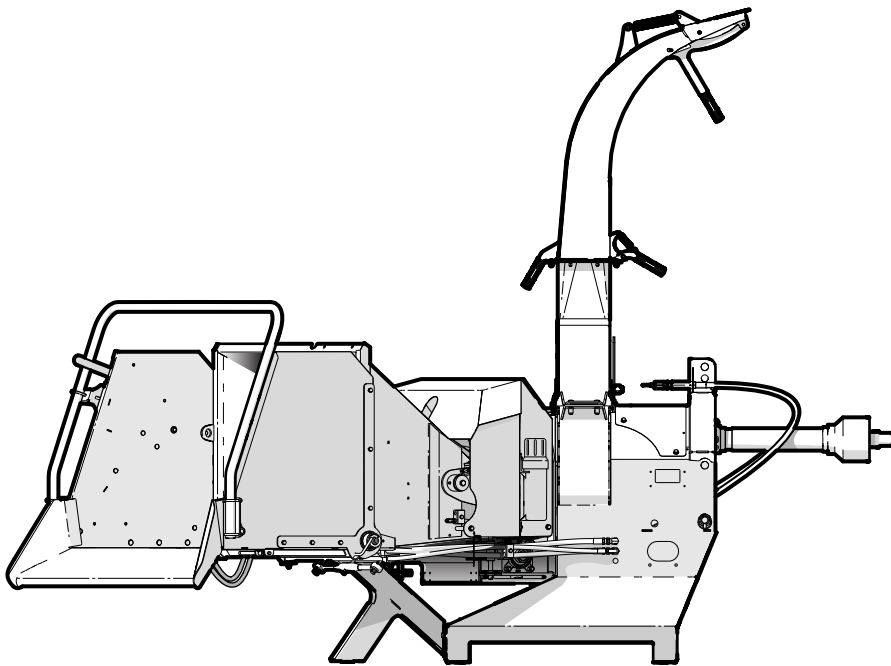


PARTS MANUAL

Serial Number 1102R510 & Up

BX102R / RI / RP / RPI **3 PH Roller-feed Chipper**



Foreword

This Wallenstein parts manual is prepared to assist customers in ordering quality OEM replacement parts.

Regular maintenance combined with replacing old, worn or broken parts with the correct OEM parts is essential in prolonging the life of your Wallenstein product. Refer to this manual to identify replacement parts.

To order parts, contact your Wallenstein dealer or distributor. Have the product model and serial number handy.

If your dealer is no longer available, please go to our website: <http://wallensteinequipment.com> and click on the [Dealer Locator](#) to find the nearest dealer.

All information contained in this parts manual is current as per the revision date at the bottom of the page. Wallenstein reserves the right to change product specifications at any time without notice.

If your product specifications differ from those contained in this manual, contact Wallenstein for current information.

Reproduction of information in this parts manual is prohibited without prior written permission from Wallenstein Equipment Inc.

Wallenstein Equipment Inc. • © 2022

WARNING!

Refer to the operators manual for safe operation and maintenance.

Maintenance should be performed by trained personnel only.

Serial Number Location

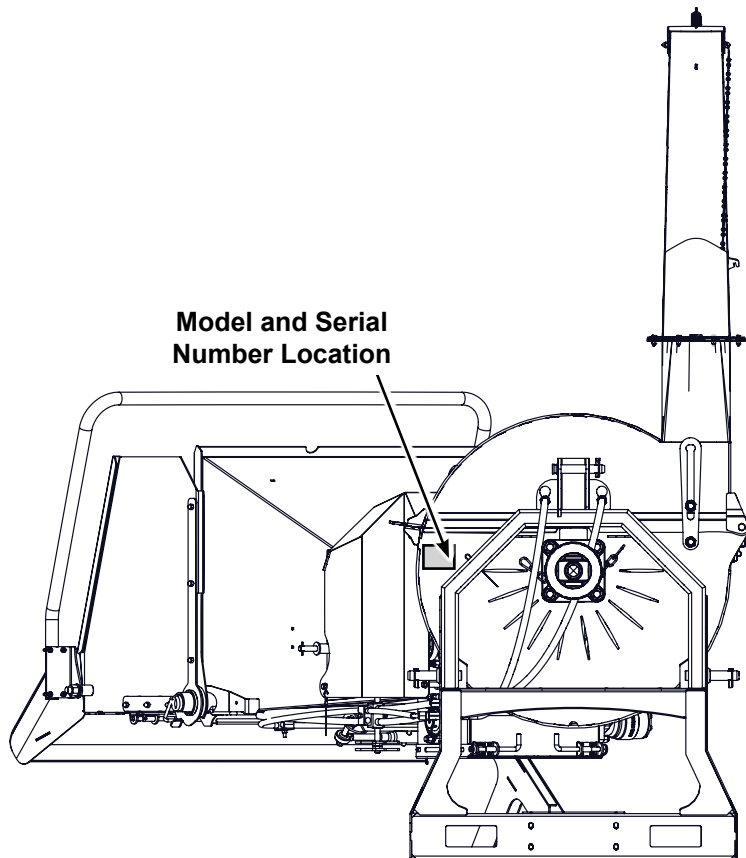
Always provide the model and serial number of your Wallenstein product when ordering parts or requesting service or other information. This information is found on the product information plate as shown below.

Record your product information here for future reference.

Model _____

Serial Number _____

Model and Serial Number Location



Models covered in this manual:

BX102R

BX102RI – P3 option

BX102RP – Winch option

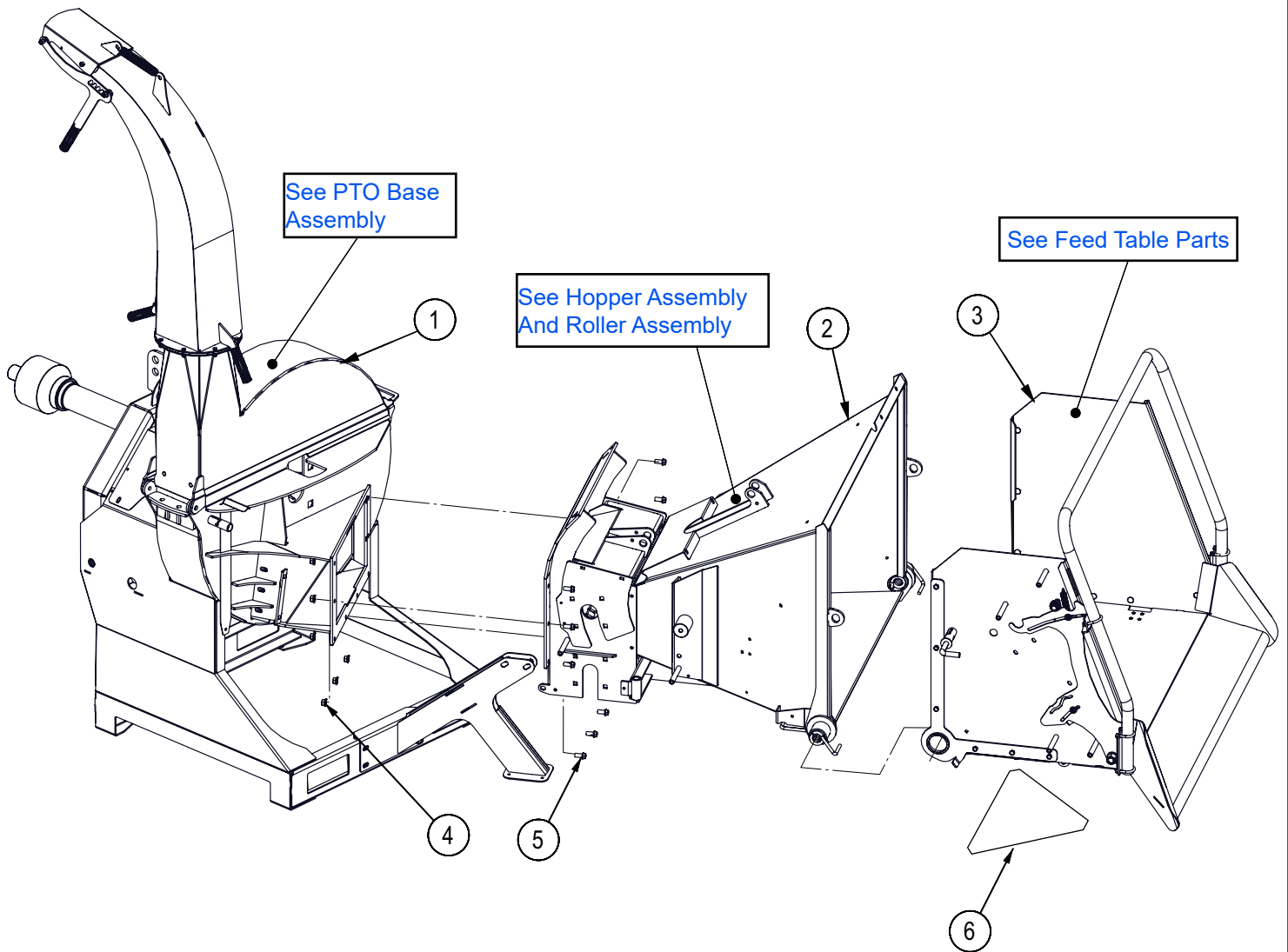
BX102RPI – Winch and P3 options

www.wallensteinequipment.com

Contents

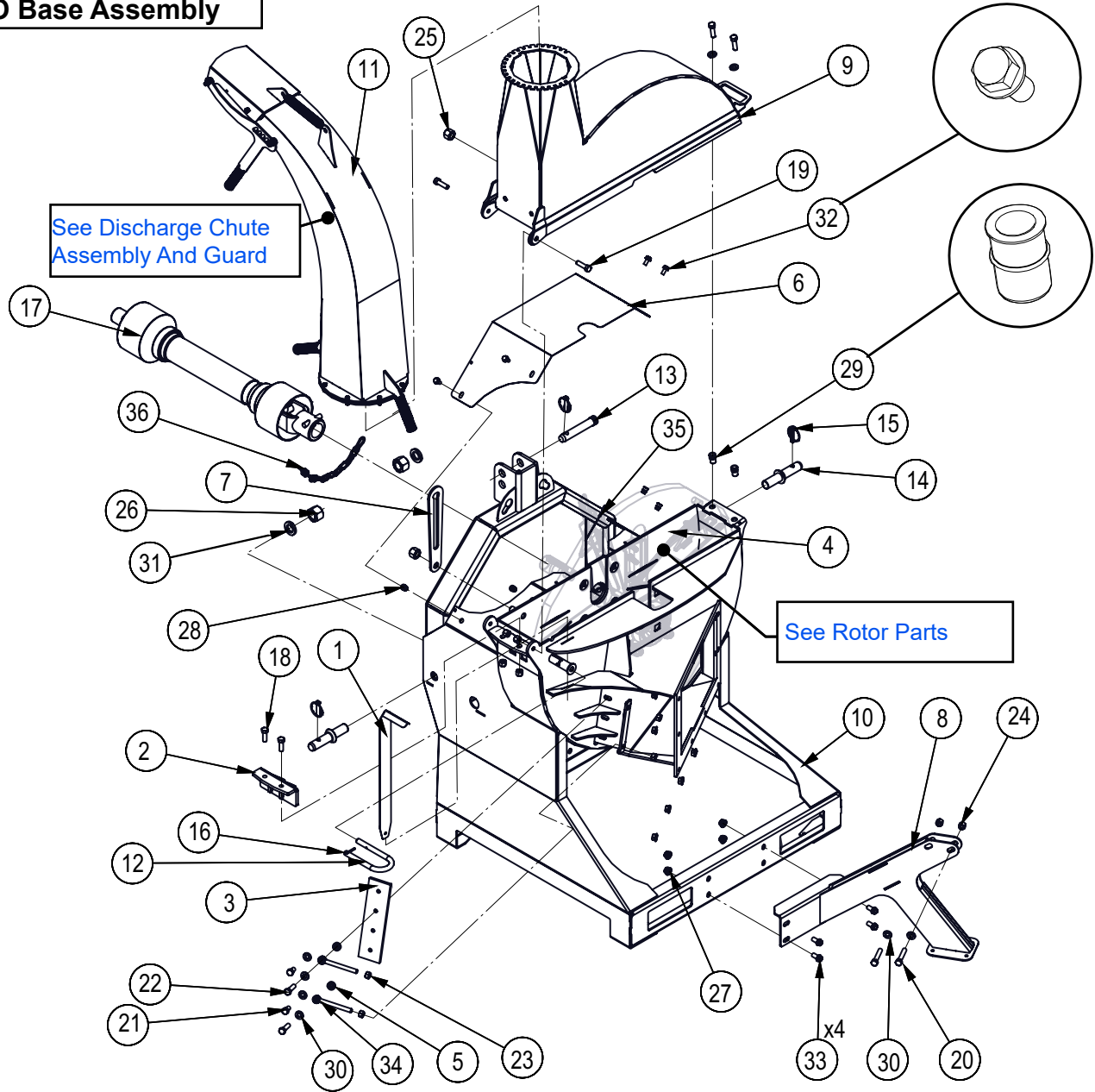
| | |
|--|-----------|
| Main Parts | 4 |
| PTO Base Assembly | 5 |
| Rotor Parts | 6 |
| Discharge Chute Assembly and Guard | 7 |
| Upper Roller Assembly | 8 |
| Lower Roller Assembly | 9 |
| Hopper Assembly (Top View) | 10 |
| Hopper Assembly (Bottom View) | 11 |
| Feed Table Parts | 12 |
| Feed Roller Valve Detail | 13 |
| Feed Roller Control Detail | 13 |
| Hydraulic Winch Option | 14 |
| Winch Drum Detail | 15 |
| Winch Arm Assembly | 15 |
| Fairlead Assembly Detail | 16 |
| Roller Lift Hydraulic Cylinder | 16 |
| Hydraulic Cylinder Detail | 17 |
| Flow Divider Detail | 17 |
| Control Valve Detail – Winch Option | 18 |
| P3 | 19 |
| Roller Control Components | 20 |
| PTO Shaft | 22 |
| Hydraulic Circuit | 23 |
| Hydraulic Circuit – Winch Option | 24 |
| P3 Wiring Harness | 25 |
| Decal Layout | 26 |
| Decal Layout | 27 |
| Decal Layout | 28 |
| Accessories | 29 |
| Common Bolt Torque Values | 30 |
| Hydraulic Fitting Torque Values | 31 |

Main Parts



| Item No. | Part No. | Description | Qty |
|----------|----------|--------------------------------|-----|
| 1 | 1021A105 | PTO Base Assembly | 1 |
| 2 | 1022A211 | PTO Hopper SubAssembly | 1 |
| 3 | 1022A210 | STD Hyd Feed Table | 1 |
| 4 | Z72551 | Serrated Flange Locknut, 1/2NC | 6 |
| 5 | Z76153 | Flange Bolt, 1/2NC x 1" | 8 |
| 6 | Z94601 | SMV Decal | 1 |

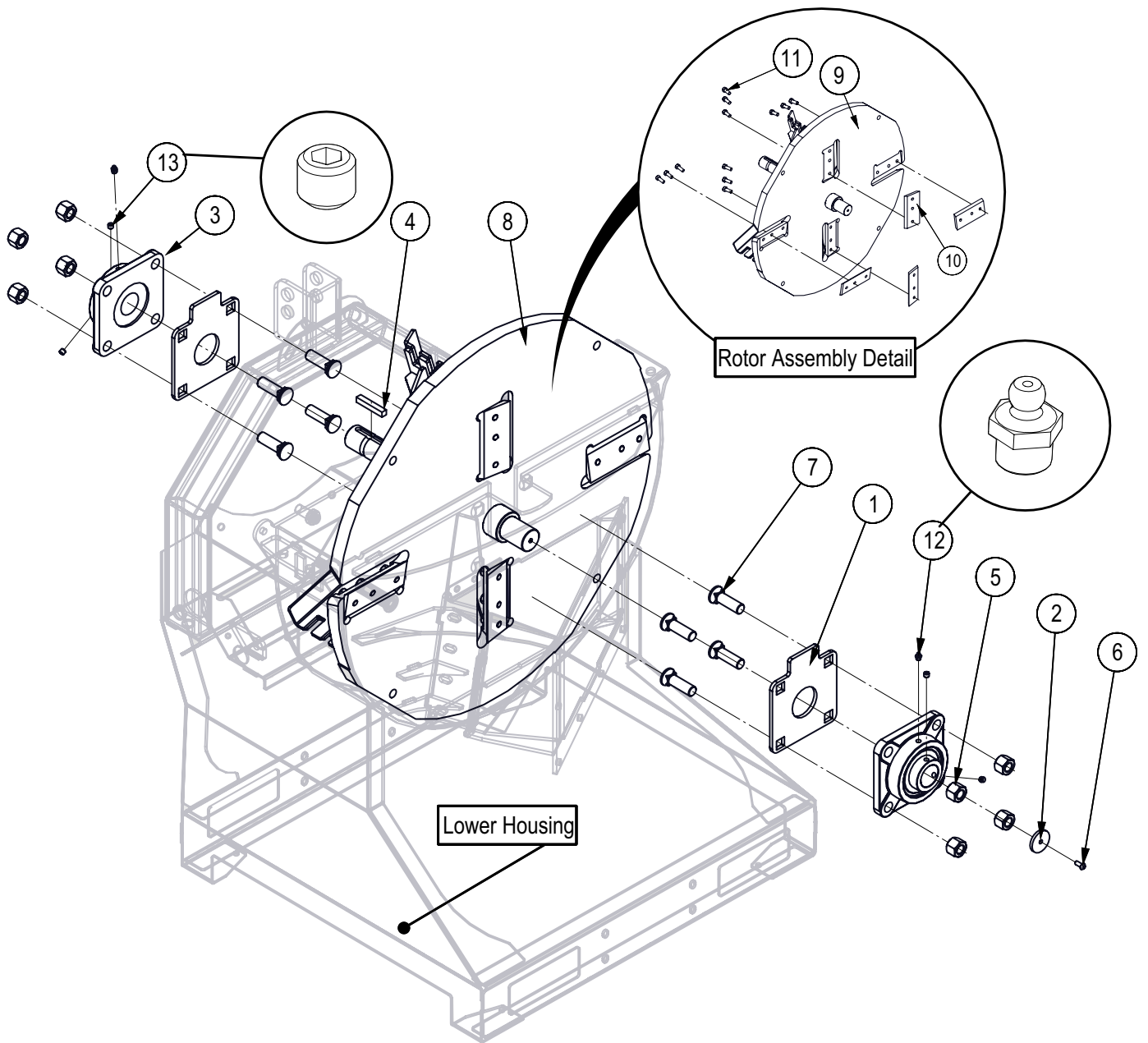
PTO Base Assembly



| Item No. | Part No. | Description | Qty |
|----------|----------|---|-----|
| 1 | 1012L269 | Gauge, Ledger Setting | 1 |
| 2 | 1012W204 | Twig Breaker | 1 |
| 3 | 1019M904 | Knife, BX92 Ledger | 1 |
| 4 | 1021A101 | Rotor Assembly, 10" Capacity | 1 |
| 5 | 1021L150 | Ledger Washer | 2 |
| 6 | 1021L153 | PTO Shield | 1 |
| 7 | 1021L155 | Rotation Stop | 1 |
| 8 | 1021W104 | Hopper Support Weldment | 1 |
| 9 | 1021W105 | Weldment, Upper Housing | 1 |
| 10 | 1021W106 | Lower Housing Weldment, 7-1/2" | 1 |
| 11 | 1023A215 | Discharge Chute, BX72 | 1 |
| 12 | 1082M402 | Locking Plunger | 1 |
| 13 | Z11142 | Toplink Pin, 1" x 4-5/16" | 1 |
| 14 | Z11441 | Implement Pin, 1-1/8" x 1-3/4" x 1-1/8NF | 2 |
| 15 | Z12140 | Lynch Pin, 7/16" | 3 |
| 16 | Z14151 | Roll Pin, 3/16" x 1-1/2" | 1 |
| 17 | Z44802 | PTO Shaft, Series B8 x 36.496" (2" Crossbolt) | 1 |
| 18 | Z71515 | Hex Bolt, 1/2NC x 1-1/2" | 2 |
| 19 | Z71517 | Hex Bolt, 1/2NC x 1-3/4" | 4 |

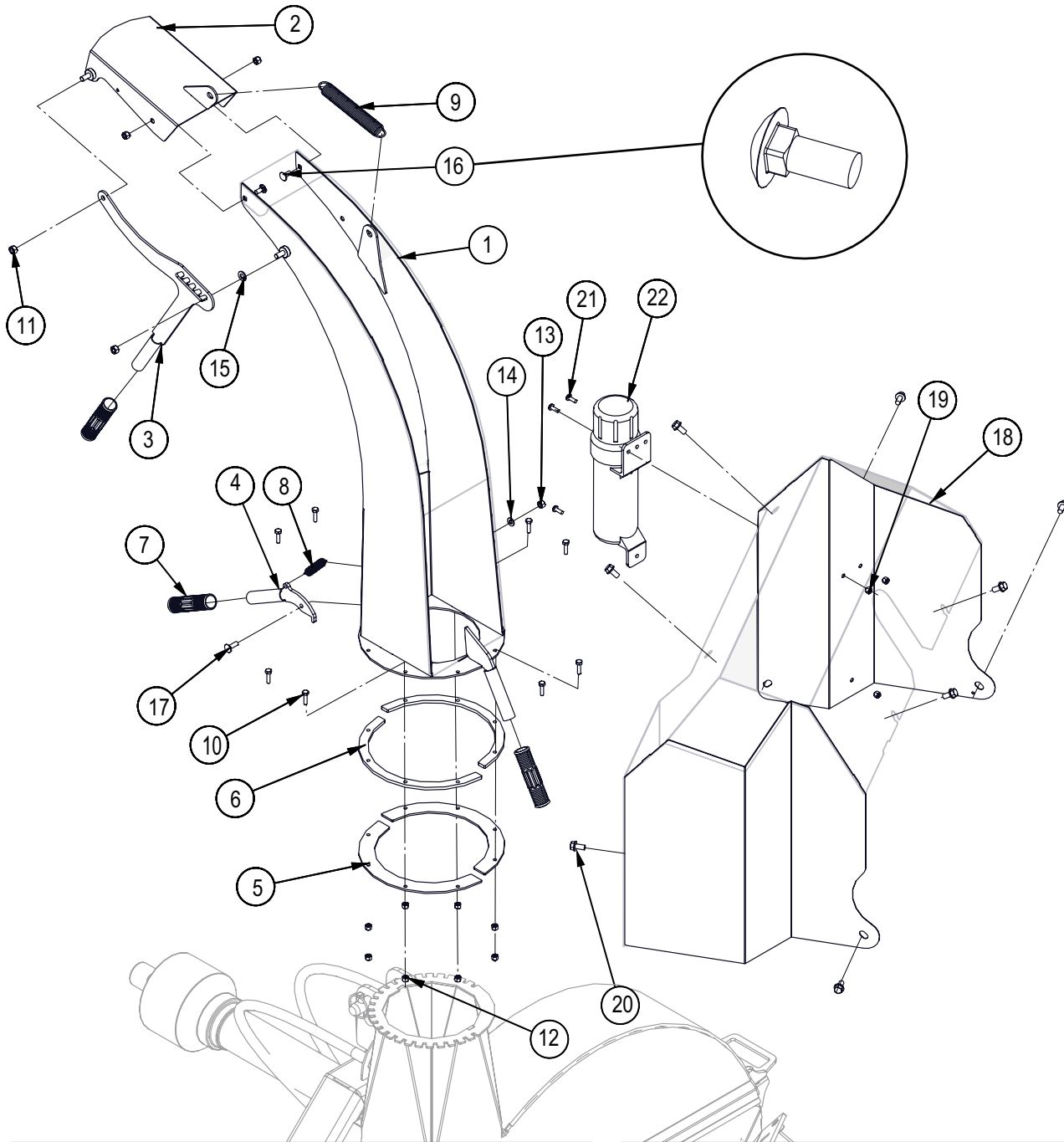
| Item No. | Part No. | Description | Qty |
|----------|----------|---|-----|
| 20 | Z71527 | Hex Bolt, 1/2NC x 2-3/4" | 2 |
| 21 | Z7157268 | Hex Bolt 1/2NF x 7/8 Gr8 | 2 |
| 22 | Z71579G8 | Hex Bolt, 1/2NF x 1-3/4" G8 | 2 |
| 23 | Z72151 | Hex Nut, 1/2NC | 4 |
| 24 | Z72251 | Hex Lock Nut, 1/2NC | 6 |
| 25 | Z72271 | Hex Lock Nut, 3/4NC | 2 |
| 26 | Z72294 | Hex Lock Nut, 1-1/8NF | 2 |
| 27 | Z72551 | Serrated Flange Locknut, 1/2NC | 10 |
| 28 | Z72959 | Rivet Nut, 3/8NC x 312 | 4 |
| 29 | Z72961 | Rivet Nut, 1/2NC x 350 | 2 |
| 30 | Z73151 | SAE Washer, 1/2" | 8 |
| 31 | Z73391 | Split Lock Washer, 1-1/8" | 2 |
| 32 | Z76133 | Flange Bolt, 3/8NC x 3/4" | 4 |
| 33 | Z76153 | Flange Bolt, 1/2NC x 1" | 4 |
| 34 | Z76552 | Rod End, 1/2NC x 5" Full Threads | 2 |
| 35 | Z92114 | Aircraft Cable, 1/16" x 12" | 1 |
| 36 | Z92310 | PTO Support Chain, 3/16" x 1ft with Two Snaps | 1 |

Rotor Parts



| Item No. | Part No. | Description | Qty |
|----------|----------|-----------------------------------|-----|
| 1 | 1021L165 | Bearing Plate, BX102R x 5/16" | 2 |
| 2 | 1021S102 | Rotation Indicator Cover | 1 |
| 3 | Z25209 | 4-Bolt Flange Bearing, UCF311-32G | 2 |
| 4 | Z46563 | Key, 1/2" x 1/2" x 3" | 1 |
| 5 | Z72281G8 | Hex Lock Nut, 7/8NC G8 | 8 |
| 6 | Z75351 | BHCS, 5/16NF x 3/4" | 1 |
| 7 | Z76681G8 | Dome Plow Bolt, 7/8NC x 3" G8 | 8 |
| 8 | 1021A101 | Rotor Assembly, 10" Capacity | 1 |
| 9 | 1021W101 | Rotor Weldment, 10" Capacity | 1 |
| 10 | 1019M903 | Knife, BX92 Rotor | 4 |
| 11 | Z71575G8 | Hex Bolt, 1/2NF x 1-1/4" G8 | 12 |
| 12 | Z29201 | Grease Fitting, MP02 | 2 |
| 13 | Z74141 | Set Screw, 7/16NF x 3/8" | 4 |

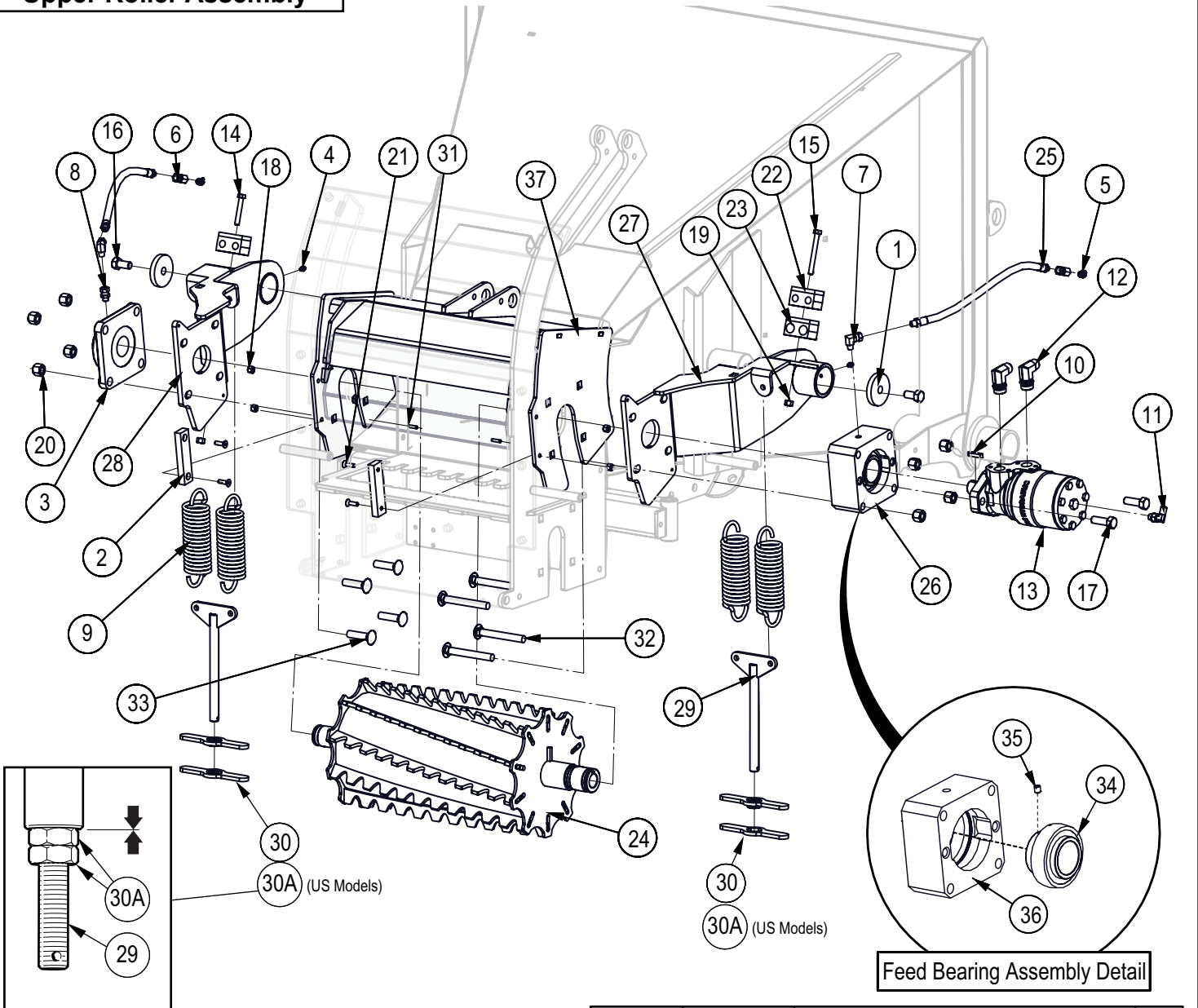
Discharge Chute Assembly and Guard



| Item No. | Part No. | Description | Qty |
|----------|----------|--------------------------------------|-----|
| 1 | 1023W223 | Discharge Chute | 1 |
| 2 | 1023W224 | Discharge Deflector | 1 |
| 3 | 1023W226 | Deflector Handle | 1 |
| 4 | 1024W108 | Discharge Latch | 1 |
| 5 | 1023L291 | Hood Capture Ring | 2 |
| 6 | 1023L292 | Spacer Ring | 2 |
| 7 | Z19321 | Handle Grip, 1" | 3 |
| 8 | Z31305 | Ext Spring, 5/8" OD x 3" x 0.08" | 1 |
| 9 | Z31403 | Ext Spring, 27mm OD x 178mm x 0.105" | 1 |
| 10 | Z71110 | Hex Bolt, 1/4NC x 1" | 8 |
| 11 | Z72131 | Hex Nut, 3/8NC | 2 |
| 12 | Z72211 | Hex Lock Nut, 1/4NC | 8 |

| Item No. | Part No. | Description | Qty |
|----------|----------|------------------------------|-----|
| 13 | Z72221 | Hex Lock Nut, 5/16NC | 3 |
| 14 | Z73122 | SAE Washer, 5/16" | 1 |
| 15 | Z73131 | SAE Washer, 3/8" | 1 |
| 16 | Z76221 | Carriage Bolt, 5/16NC x 3/4" | 2 |
| 17 | Z76225 | Carriage Bolt, 5/16NC x 1" | 1 |
| 18 | 1022W221 | Bridge Guard | 1 |
| 19 | Z72211 | Hex Lock Nut, 1/4NC | 3 |
| 20 | Z76133 | Flange Bolt, 3/8NC x 3/4" | 8 |
| 21 | Z78301 | Machine Screw, 1/4NC x 3/4" | 3 |
| 22 | Z96503 | Manual Tube, 3-1/2" Short | 1 |

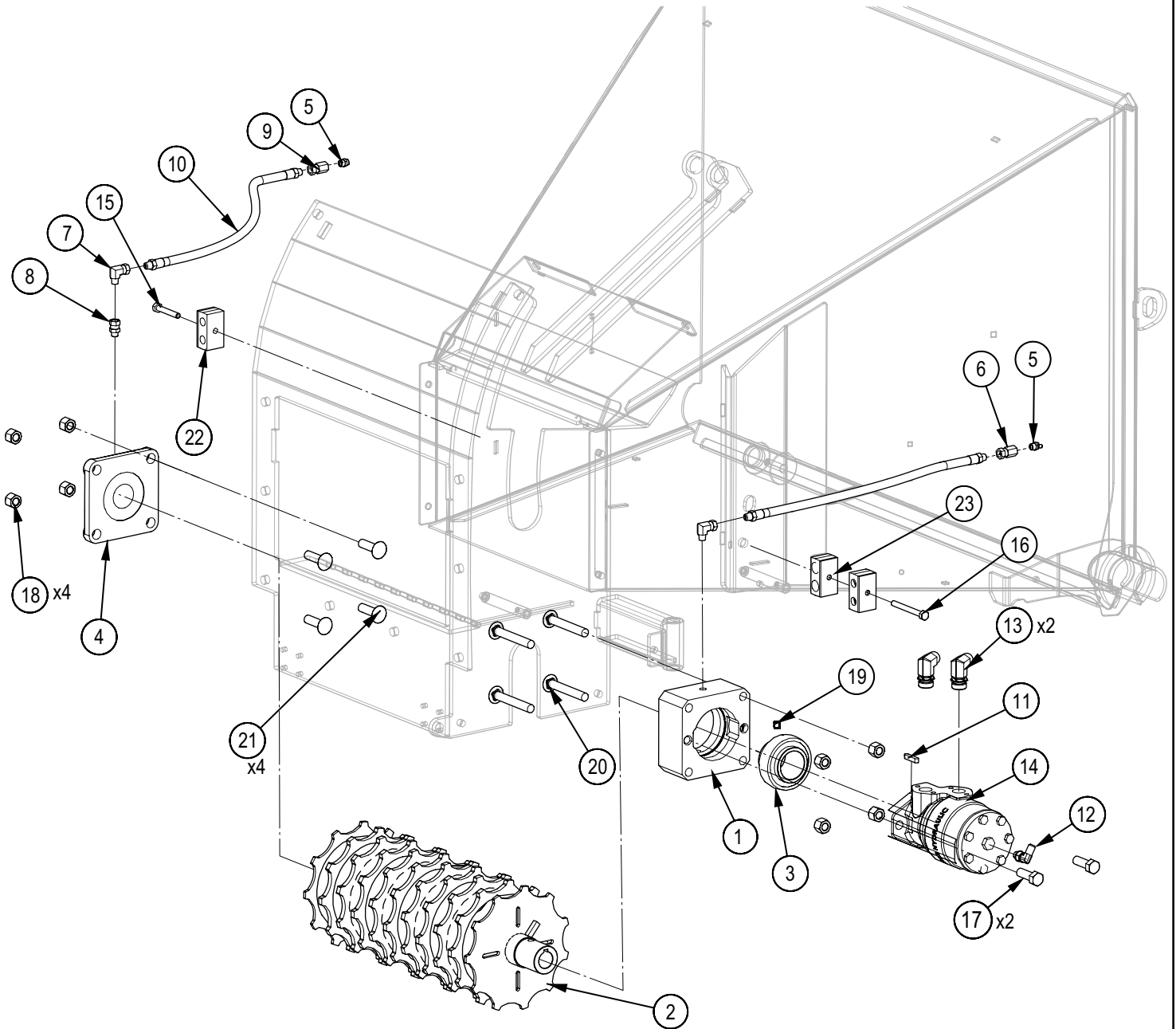
Upper Roller Assembly



| Item No. | Part No. | Description | Qty |
|----------|----------|---|-----|
| 1 | 1015L618 | Capture Washer | 2 |
| 2 | 1022S208 | Rotor Hood Slide | 2 |
| 3 | Z25204 | 4-Bolt Flange Bearing, UCF208-24 | 1 |
| 4 | Z29202 | Grease Fitting, 1/4NF | 2 |
| 5 | Z29204 | Elbow 45 Grease Fitting, MP02 | 2 |
| 6 | Z29302 | Grease Fitting, FP x FPX 0202 | 2 |
| 7 | Z29307 | Elbow 90 Grease Fitting, MP x FPX 0202 | 2 |
| 8 | Z29311 | Grease Fitting, MP x FPX 0202 | 1 |
| 9 | Z31501 | Ext Spring, 2" OD x 7" x 0.250" | 4 |
| 10 | Z46594 | Blind Chipper Key, 1/4" x 1/4" x 1-1/4" | 1 |
| 11 | Z51657 | Elbow 90, MJIC x MORB 0404 | 1 |
| 12 | Z51658 | Elbow 90, MJIC x MORB 0810 | 2 |
| 13 | Z54105 | Hydraulic Motor, 400CCR | 1 |
| 14 | Z71220 | Hex Bolt, 5/16NC x 2" | 1 |
| 15 | Z71230 | Hex Bolt, 5/16NC x 3" | 1 |
| 16 | Z71510 | Hex Bolt, 1/2NC x 1" | 2 |
| 17 | Z71515 | Hex Bolt, 1/2NC x 1-1/2" | 2 |
| 18 | Z72211 | Hex Lock Nut, 1/4NC | 4 |

| Item No. | Part No. | Description | Qty |
|----------|-----------|-------------------------------------|-----|
| 20 | Z72251 | Hex Lock Nut, 1/2NC | 8 |
| 21 | Z75211 | FHCS, 1/4NC x 7/8" | 4 |
| 22 | Z79462 | Double Hose Clamp, 1/2" OD | 2 |
| 23 | Z79463 | Double Hose Clamp, 11/16" OD | 1 |
| 24 | 1022W231 | BX102R Upper Feed Roller, Spiral | 1 |
| 25 | 1021F106 | 1/4" Grease Whip, MP02 x MP02 x 13" | 2 |
| 26 | 1022A205 | Feed Bearing Assembly | 1 |
| 27 | 1022W202 | Roller Pivot Arm LH | 1 |
| 28 | 1022W202H | Roller Pivot Arm RH | 1 |
| 29 | 1022W206 | Spring Yoke | 2 |
| 30 | 1022W220 | Nut Handle | 4 |
| 30A | Z72361 | Jam Nut, 5/8NC (US Models only) | 4 |
| 31 | Z14152 | Roll Pin, 3/16" x 3/4" | 4 |
| 32 | Z762511 | Carriage Bolt, 1/2NC x 4" | 4 |
| 33 | Z76255 | Carriage Bolt, 1/2NC x 2" | 4 |
| 34 | Z21903 | Ball Bearing, UC209-28 x Insert | 1 |
| 35 | Z74122 | Set Screw, 5/16NF x 3/8" | 1 |
| 36 | 1022M218 | UC Motor Bearing Housing | 1 |
| 37 | 1060W307 | Bridge, Guarded - BX102R, BX102RI | 1 |

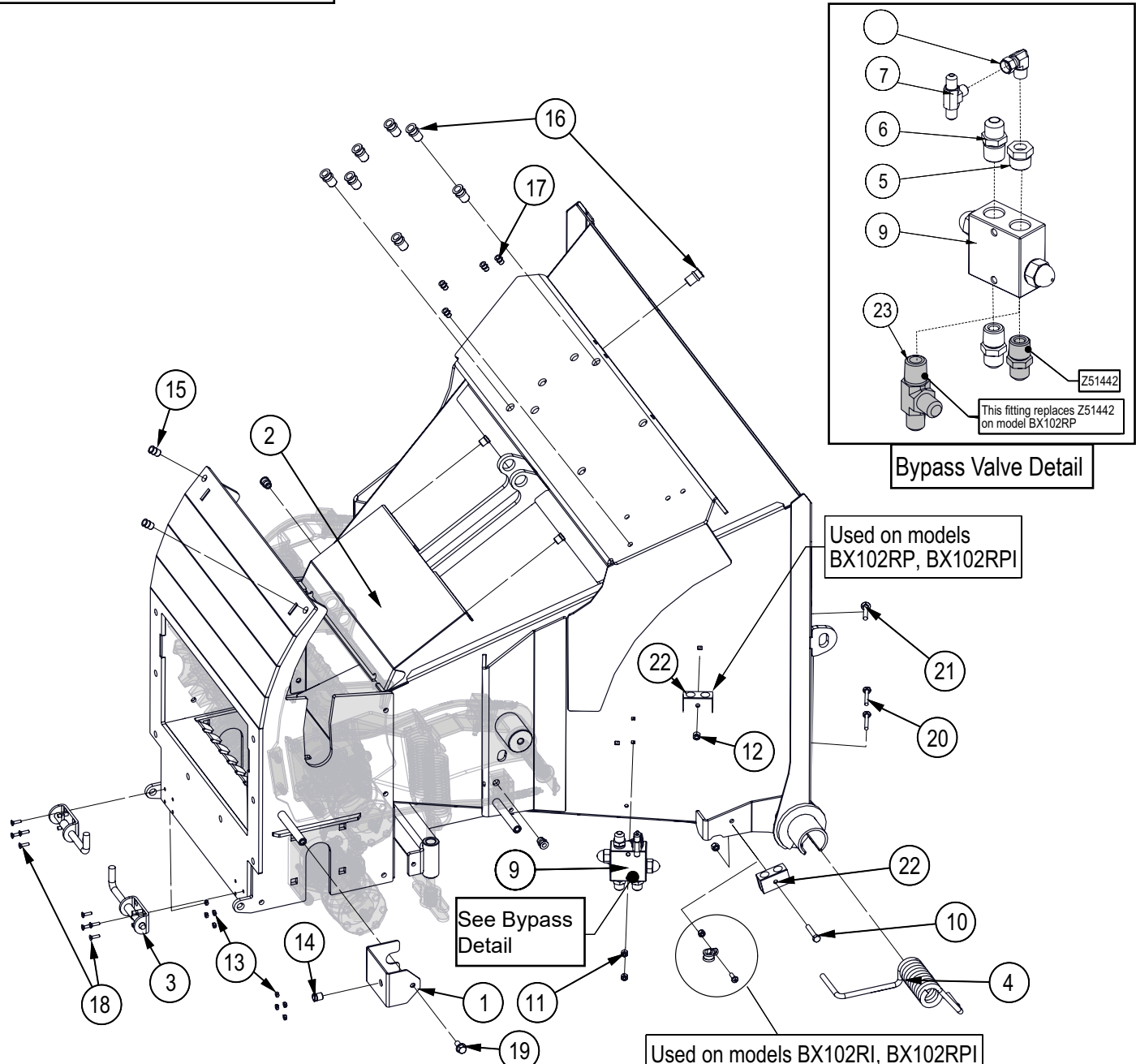
Lower Roller Assembly



| Item No. | Part No. | Description | ty |
|----------|----------|------------------------------------|----|
| 1 | 1022M218 | UC Motor Bearing Housing | 1 |
| 2 | 1022W205 | Lower Feed Roll | 1 |
| 3 | Z21903 | Ball Bearing Insert 1-3/4" | 1 |
| 4 | Z25204 | 4-Bolt Bearing 1-1/2" Bore | 1 |
| 5 | Z29204 | Grease Fitting, 1/8NPT x 45 | 2 |
| 6 | Z29302 | Straight, FP x FPX 0202 | 1 |
| 7 | Z29307 | Elbow 90 MP x FPX 0202 | 2 |
| 8 | Z29311 | Straight, MP x FPX 0202 | 1 |
| 9 | Z29312 | Straight, FP x FPX 0202 | 1 |
| 10 | Z29313 | 1/4 Grease Hose, MP02 x MP02 x 16" | 2 |
| 11 | Z46594 | Blind Chipper Key 1/4 x 1-1/4 | 1 |
| 12 | Z51657 | Elbow 90, MORB x MJIC 0404 | 1 |

| Item No. | Part No. | Description | Qty |
|----------|----------|------------------------------|-----|
| 13 | Z51658 | Elbow 90 MJIC x MORB 0810 | 2 |
| 14 | Z54104 | 315 Series Hydraulic Motor | 1 |
| 15 | Z71220 | Hex Bolt, 5/16NC x 2 | 1 |
| 16 | Z71230 | Hex Bolt, 5/16NC x 3 | 1 |
| 17 | Z71515 | Hex Bolt, 1/2NC x 1-1/2 | 2 |
| 18 | Z72251 | Hex Lock Nut, 1/2NC | 8 |
| 19 | Z74122 | Set Screw, 5/16NF | 1 |
| 20 | Z762510 | Carriage Bolt, 1/2NC x 3-1/2 | 4 |
| 21 | Z76258 | Carriage Bolt, 1/2NC x 1-3/4 | 4 |
| 22 | Z79462 | Double Hose Clamp 1/2" | 2 |
| 23 | Z79463 | Double Hose Clamp 11/16" | 1 |

Hopper Assembly (Top View)



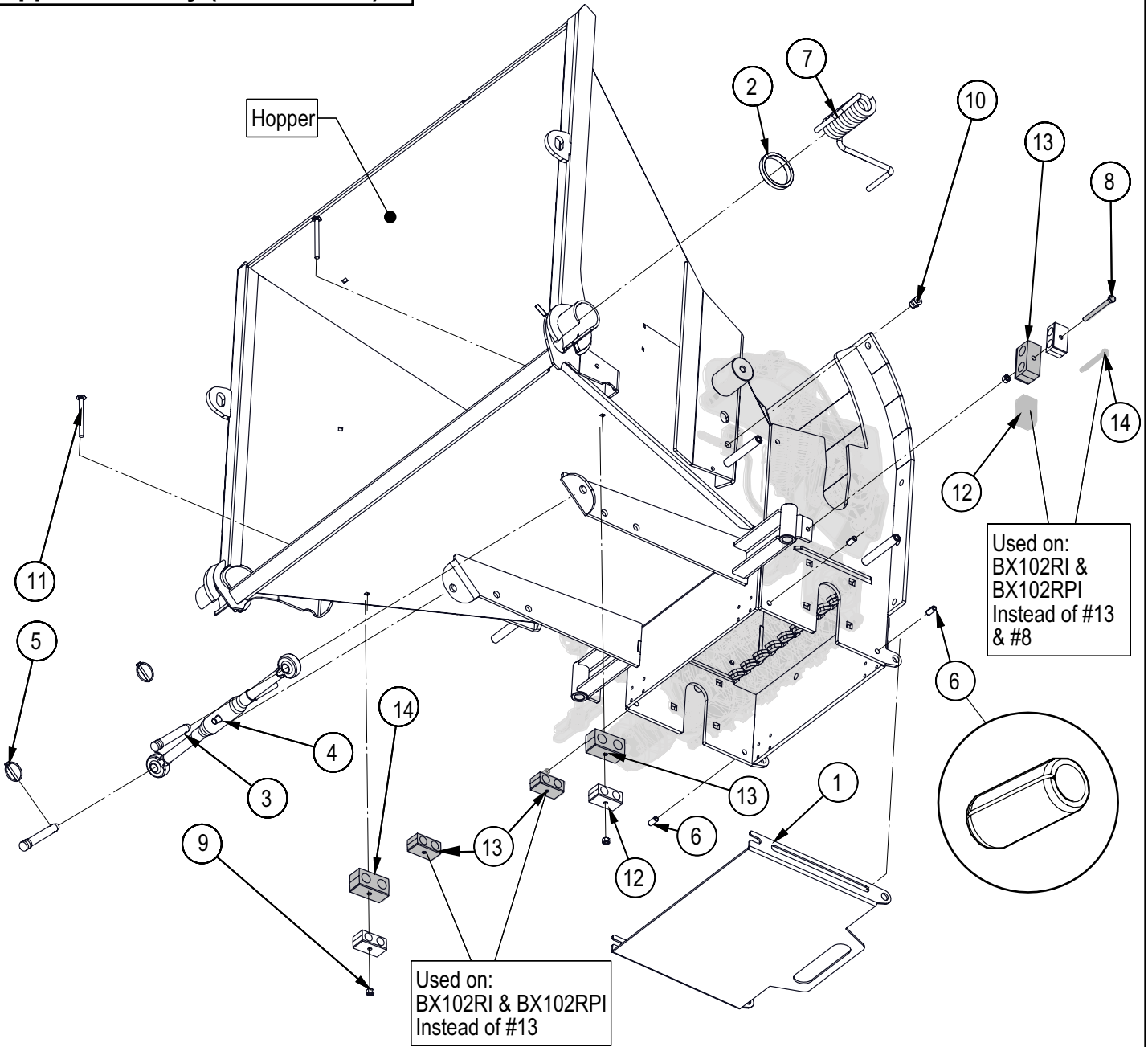
Note: Main Hopper
 BX102R, BX102RI p/n 1022W201
 BX102RP, BX102RPI p/n 1083W107

Used on models BX102RI, BX102RPI
 1 x Z72211 Hex Lock Nut 1/4 NC
 1 x Z62819 Rubberized Wire Clamp
 1 x Z78301 Mach. Screw 1/4-20 x 3/4
 1 x Z73111 Flat Washer 1/4

| Item No. | Part No. | Description | Qty |
|----------|----------|---|-----|
| 1 | 1022L300 | Bridge Guard Mount | 1 |
| 2 | 1022W201 | Main Hopper | 1 |
| 3 | Z18207 | Spring Latch Pin 1/2 x 1" Stroke | 2 |
| 4 | Z33302 | Torsion Spring 3/8wire x 2 O.D. x 5" LH | 1 |
| 5 | Z516420 | Straight, MJIC x MORB 0408 | 1 |
| 6 | Z51643 | Straight, MJIC x MORB 0808 | 3 |
| 7 | Z515902 | Tee MJIC x MJIC x FJICX 040404 | 1 |
| 8 | Z51569 | Elbow 90 MP x FJICX 0404 | 1 |
| 9 | Z56401 | Crossover Relief Valve | 1 |
| 10 | Z71217 | Hex Bolt, 5/16NC x 1-3/4 | 1 |
| 11 | Z72211 | Hex Lock Nut, 1/4NC | 2 |
| 12 | Z72221 | Hex Lock Nut, 5/16NC | 2 |

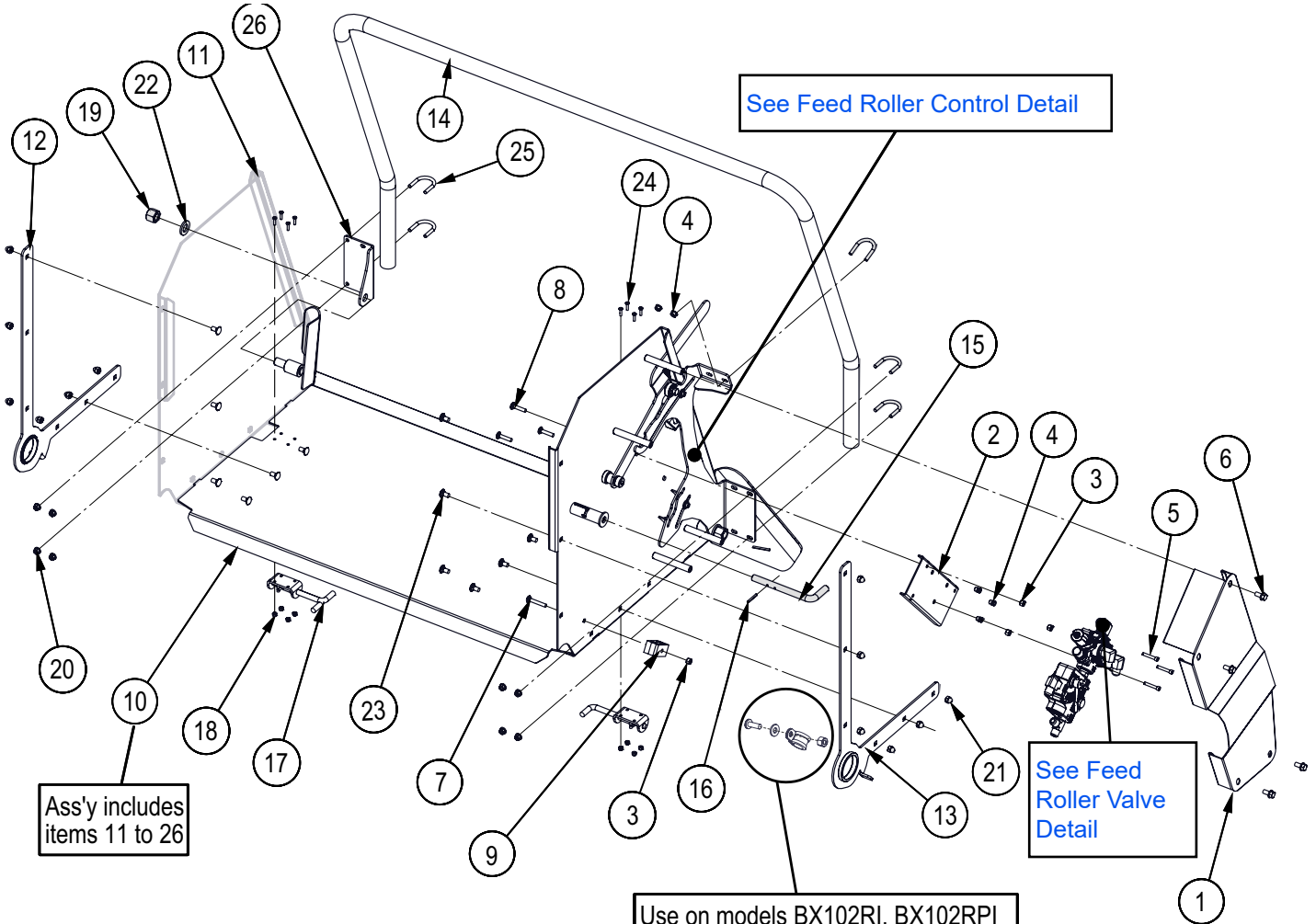
| Item No. | Part No. | Description | Qty |
|----------|----------|-------------------------------|-----|
| 13 | Z72752 | Machine Nut, #10-32NF | 8 |
| 14 | Z72958 | Riv-Nut 3/8NC x 150 | 3 |
| 15 | Z72959 | Riv-Nut 3/8NC x 312 | 2 |
| 16 | Z72961 | Riv-Nut 1/2NC x 350 | 8 |
| 17 | Z72962 | Riv-Nut, 1/4NC x 260 | 4 |
| 18 | Z75203 | FHCS, #10-32NF x 3/4 | 8 |
| 19 | Z76133 | Flange Bolt, 3/8NC x 3/4 | 1 |
| 20 | Z76213 | Carriage Bolt, 1/4NC x 2 | 2 |
| 21 | Z76227 | Carriage Bolt, 5/16NC x 1-3/4 | 1 |
| 22 | Z79463 | Double Hose Clamp 11/16" | 2 |
| 23 | Z51487 | Tee MJIC x MP x MJIC 080808 | 1 |

Hopper Assembly (Bottom View)



| Item No. | Part No. | Description | Qty |
|----------|----------|---|-----|
| 1 | 1022L280 | Lower Roller Guard | 1 |
| 2 | 1022M230 | Feed Table Wear Bushing | 1 |
| 3 | Z11111 | Toplink Pin 5/8 x 2-3/4 | 2 |
| 4 | Z11501 | Toplink, Cat 0 | 1 |
| 5 | Z12110 | Latch Pin 3/16 | 2 |
| 6 | Z14301 | Roll Pin, 10mm x 22mm | 3 |
| 7 | Z33301 | Torsion Spring 3/8wire x 2 O.D. x 5" RH | 1 |
| 8 | Z71235 | Hex Bolt, 5/16NC x 3-1/2 | 1 |
| 9 | Z72221 | Hex Lock Nut, 5/16NC | 3 |
| 10 | Z72957 | Riv-Nut 5/16NC x 312 | 2 |
| 11 | Z76229 | Carriage Bolt, 5/16NC x 3-1/2 | 2 |
| 12 | Z79463 | Double Hose Clamp 11/16" | 4 |
| 13 | Z79464 | Double Hose Clamp 13/16" | 3 |
| 14 | Z71230 | Hex Bolt, 5/16NC x 3 | 1 |

Feed Table Parts



Ass'y includes items 11 to 26

See Feed Roller Control Detail

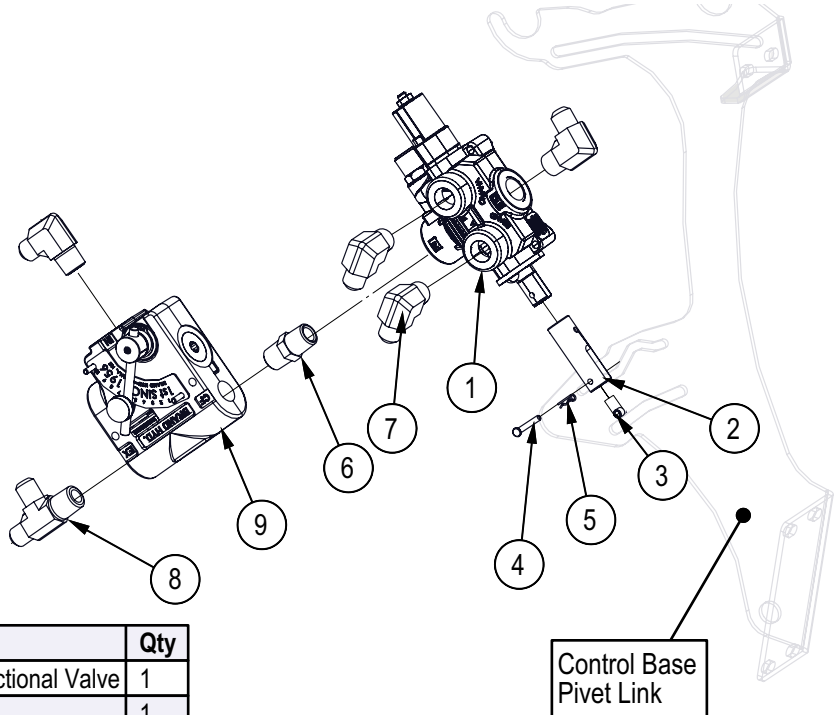
See Feed Roller Valve Detail

Use on models BX102RI, BX102RPI
 1x Z72211 Hex Lock Nut 1/4 NC
 1x Z62819 Rubberized Wire Clamp
 1x Z78301 Mach. Screw 1/4NC x 3/4
 1x Z73111 SAE Washer 1/4

| Item No. | Part No. | Description | Qty |
|----------|-----------|--------------------------------|-----|
| 1 | 1022L256 | Valve Guard | 1 |
| 2 | 1023L285 | Valve Mount Plate | 1 |
| 3 | Z72221 | Hex Lock Nut, 5/16NC | 4 |
| 4 | Z72955 | Rivet Nut, 1/4NC x 165 | 3 |
| 5 | Z75116 | SHCS, 1/4NC x 1-1/2" | 3 |
| 6 | Z76133 | Flange Bolt, 3/8NC x 3/4" | 4 |
| 7 | Z762202 | Carriage Bolt, 5/16NC x 2" | 1 |
| 8 | Z76224 | Carriage Bolt, 5/16NC x 1-1/2" | 3 |
| 9 | Z79463 | Double Hose Clamp, 11/16" OD | 1 |
| 10 | 1022A201 | Common Feed Table Assembly | 1 |
| 11 | 1022W204 | Feed Table | 1 |
| 12 | 1022W230 | Feed Table Trap Plate | 1 |
| 13 | 1022W230H | Feed Table Trap, LH | 1 |
| 14 | 1022S203 | Feed Control Handle | 1 |

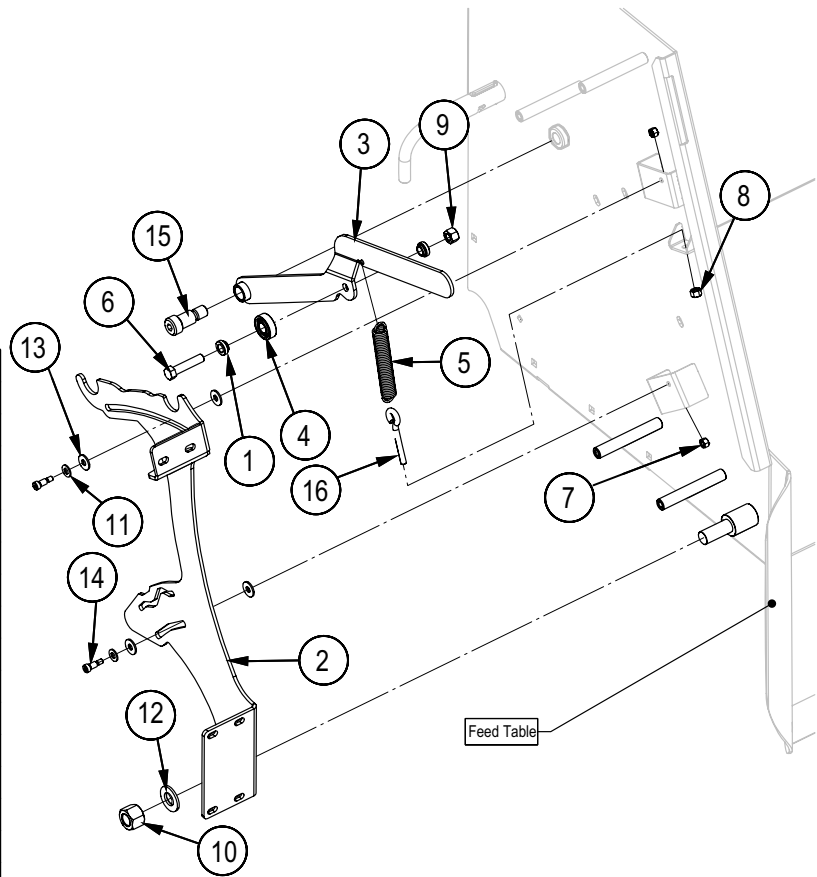
| Item No. | Part No. | Description | Qty |
|----------|----------|------------------------------------|-----|
| 15 | 1061M108 | L Handled Plunger, Compact | 1 |
| 16 | Z14151 | Roll Pin, 3/16" x 1-1/2" | 1 |
| 17 | Z18207 | Spring Latch Pin, 1/2" x 1" Stroke | 2 |
| 18 | Z72204 | Hex Lock Nut, #10NF | 8 |
| 19 | Z72271 | Hex Lock Nut, 3/4NC | 1 |
| 20 | Z72521 | Serrated Flange Locknut, 5/16NC | 10 |
| 21 | Z72911 | Acorn Nut, 3/8NC | 12 |
| 22 | Z73171 | SAE Washer, 3/4" | 1 |
| 23 | Z76233 | Carriage Bolt, 3/8NC x 3/4" | 12 |
| 24 | Z78316 | Machine Screw, #10NF x 3/4" | 8 |
| 25 | 1015S538 | U-bolt, Bearing Adapter | 5 |
| 26 | 1022L271 | Feed Control Pivot | 1 |

Feed Roller Valve Detail



| Item No. | Part No. | Description | Qty |
|----------|----------|--|-----|
| 1 | Z56215 | Spring Ctr Low Force Directional Valve | 1 |
| 2 | 1022M213 | Bearing Yoke | 1 |
| 3 | 1022M217 | Solid Bearing | 1 |
| 4 | Z11301 | Clevis Pin 3/16 x 1-3/8" | 1 |
| 5 | Z12210 | Hitch Pin Clip, 1/16 | 1 |
| 6 | Z51122 | Nipple, MP x MP 0808 | 1 |
| 7 | Z51451 | #8JIC x 1/2NPT 90 Elbow | 4 |
| 8 | Z51487 | Tee MJIC x MP x MJIC 080808 | 1 |
| 9 | Z56305 | Brand PFC 0-8 GPM | 1 |

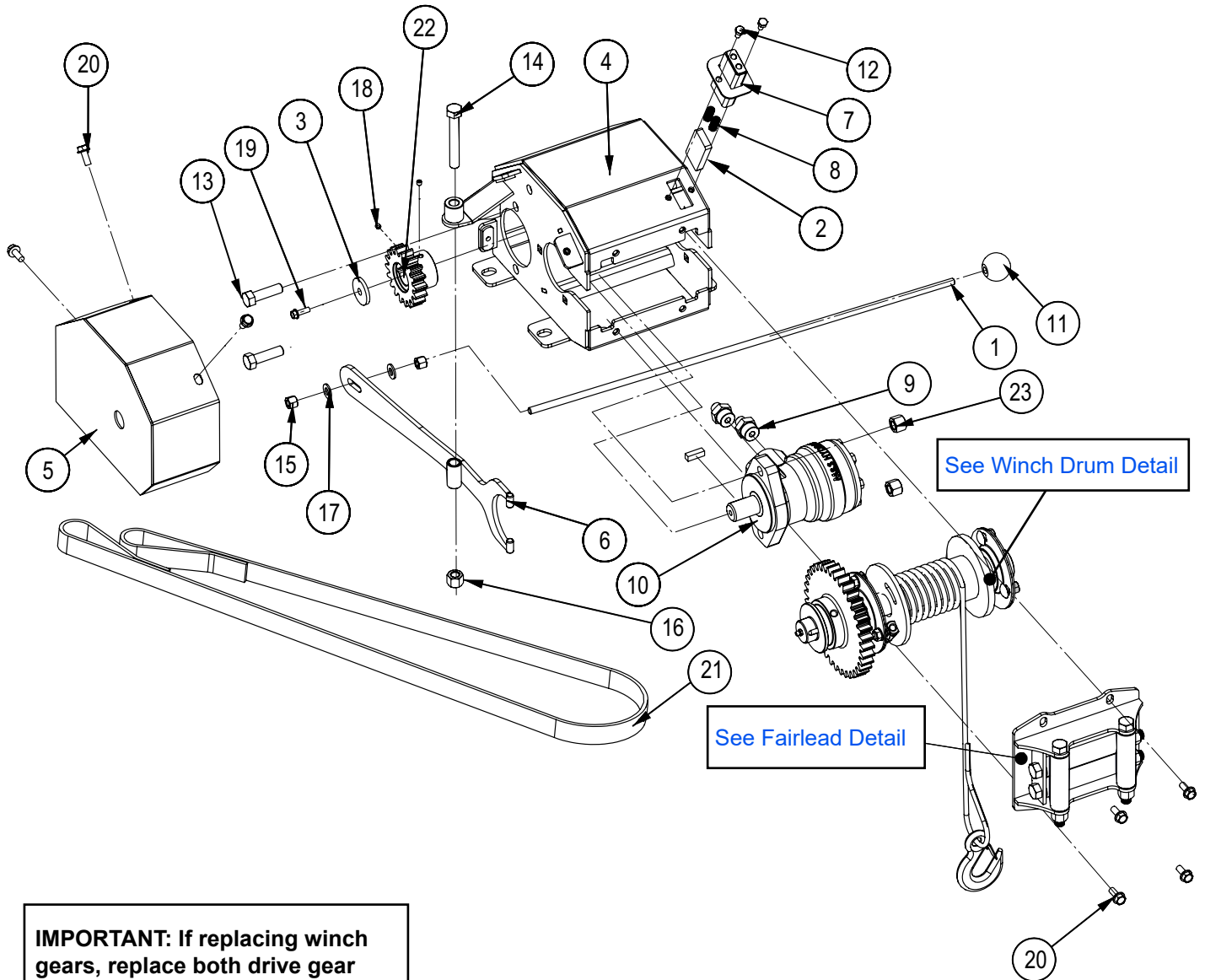
Feed Roller Control Detail



| Item No. | Part No. | Description | Qty |
|----------|----------|---------------------------------|-----|
| 1 | 1015M537 | Bushing, Bearing | 2 |
| 2 | 1022L239 | Control Base Pivot Link | 1 |
| 3 | 1022W224 | Detent Reset | 1 |
| 4 | Z21203 | Ball Bearing 6202 RS | 1 |
| 5 | Z31401 | Spring 3/4 x 4" Heavy | 1 |
| 6 | Z71420 | Hex Bolt, 7/16NC x 2 | 1 |
| 7 | Z72211 | Hex Lock Nut, 1/4NC | 2 |
| 8 | Z72221 | Hex Lock Nut, 5/16NC | 1 |
| 9 | Z72241 | Hex Lock Nut, 7/16NC | 1 |
| 10 | Z72271 | Hex Lock Nut, 3/4NC | 1 |
| 11 | Z73122 | Flat Washer, 5/16 | 2 |
| 12 | Z73171 | Flat Washer, 3/4" | 1 |
| 13 | Z73222 | PTFE Flat Washer, 5/16 x 0.080" | 4 |
| 14 | Z75522 | Shoulder Bolt, 5/16 x 1/2" | 2 |
| 15 | Z75574 | Shoulder Bolt, 3/4 x 1 | 1 |
| 16 | Z76522 | Eye Bolt 5/16NC x 2 | 1 |

Hydraulic Winch Option

MODELS BX102RP, BX102RPI



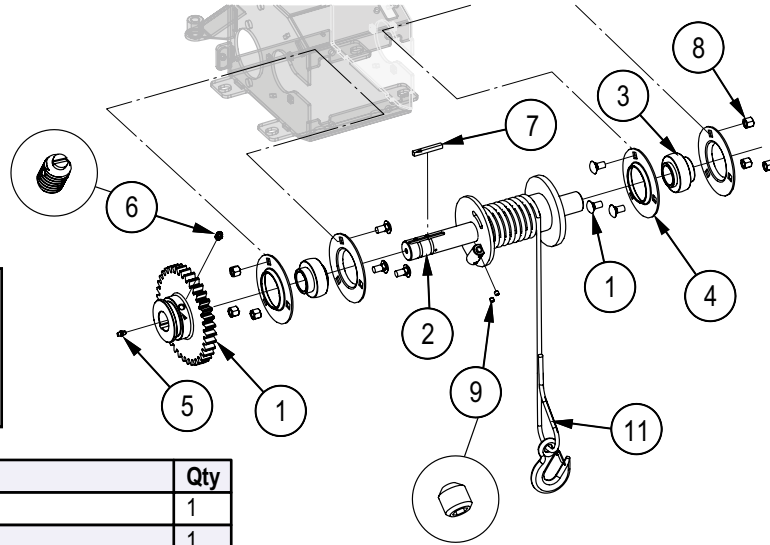
IMPORTANT: If replacing winch gears, replace both drive gear and driven gear so they are correctly matched.

| Item No. | Part No. | Description | Qty |
|----------|----------|---------------------------------------|-----|
| 1 | 1083M203 | Winch Control Rod | 1 |
| 2 | 5012M204 | Block, Drum Brake | 1 |
| 3 | 5081L114 | Washer, Motor Shaft | 1 |
| 4 | 5081W102 | Housing, Winch | 1 |
| 5 | 5081W111 | Shield | 1 |
| 6 | 5081W112 | Handle, Winch Clutch | 1 |
| 7 | 5081W114 | Holder, Brake Pad | 1 |
| 8 | Z32201 | Comp Spring, 10mm OD x 64mm x 0.0475" | 2 |
| 9 | Z51645 | Straight, MJIC x MORB 0610 | 2 |
| 10 | Z54108 | Hydraulic Motor, 50CCR | 1 |
| 11 | Z56914 | Handle Kit, Knob | 1 |
| 12 | Z71105 | Hex Bolt, 1/4NC x 1/2" | 2 |

| Item No. | Part No. | Description | Qty |
|----------|----------|--------------------------------|-----|
| 13 | Z71517 | Hex Bolt, 1/2NC x 1-3/4" | 2 |
| 14 | Z71535 | Hex Bolt, 1/2NC x 3-1/2" | 1 |
| 15 | Z72231 | Hex Lock Nut, 3/8NC | 2 |
| 16 | Z72251 | Hex Lock Nut, 1/2NC | 1 |
| 17 | Z73131 | SAE Washer, 3/8" | 2 |
| 18 | Z74111 | Set Screw, 1/4NC x 1/4" | 2 |
| 19 | Z76111 | Flange Bolt, 1/4NC x 3/4" | 1 |
| 20 | Z76121 | Flange Bolt, 5/16NC x 3/4" | 7 |
| 21 | Z92405 | 60" Winching Strap | 1 |
| 22 | 5081M126 | Drive Gear Hub | 1 |
| 23 | Z72551 | Serrated Flange LockNut, 1/2NC | 2 |

Winch Drum Detail

MODELS BX102RP, BX102RPI

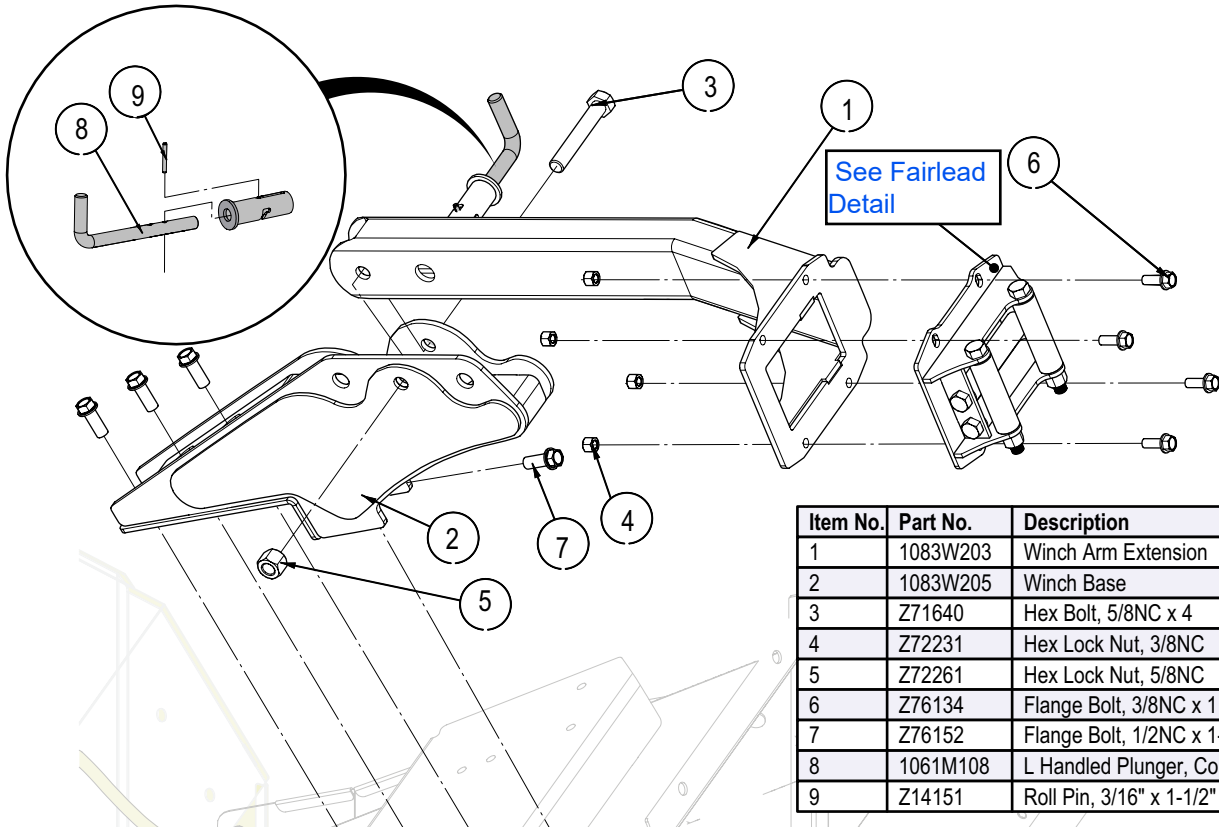


IMPORTANT: If replacing winch gears, replace both drive gear and driven gear so they are correctly matched.

| Item No. | Part No. | Description | Qty |
|----------|----------|--|-----|
| 1 | 5081M125 | Gear, Driven | 1 |
| 2 | 5081W121 | Drum, Main Cable | 1 |
| 3 | Z25207 | Z25203 Insert Only | 2 |
| 4 | Z25301 | PF206 Flange Only | 4 |
| 5 | Z29202 | Grease Zerk 1/4NF | 1 |
| 6 | Z34302 | Spring Plunger, 3/8NC x 5/8" x 21 lbs | 1 |
| 7 | Z46531 | Key, 1/4 x 1/4 x 2 | 1 |
| 8 | Z72231 | Hex Lock Nut, 3/8NC | 6 |
| 9 | Z74113 | Set Screw, 1/4NC x 1/2" | 2 |
| 10 | Z76233 | Carriage Bolt, 3/8NC x 3/4" | 6 |
| 11 | Z92112 | Synthetic Winch Rope 1/4 x 50' with Hook | 1 |

Winch Arm Assembly

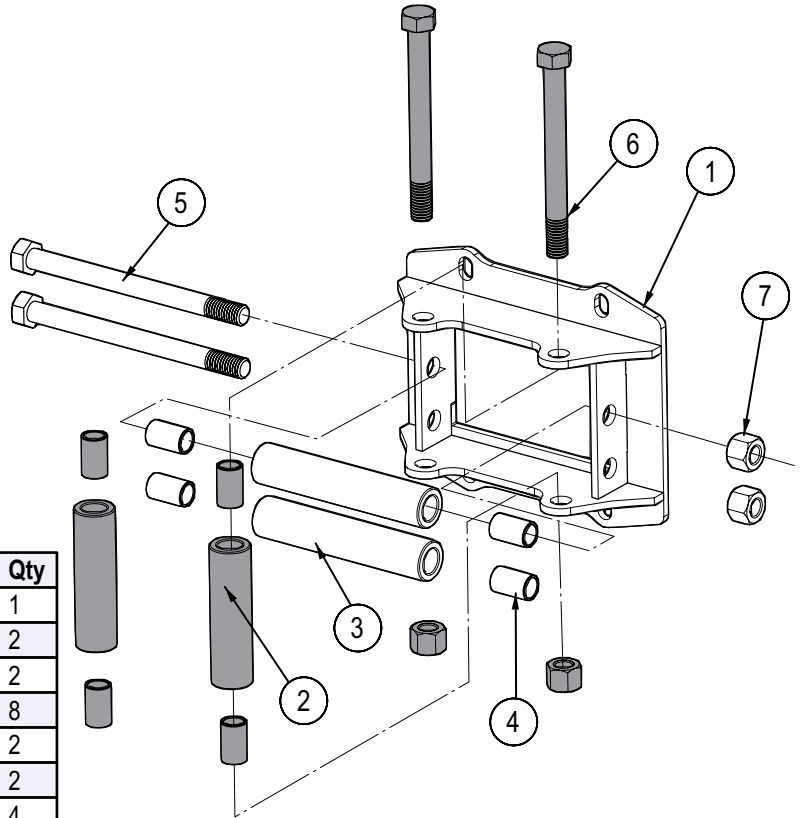
MODELS BX102RP, BX102RPI



| Item No. | Part No. | Description | Qty |
|----------|----------|----------------------------|-----|
| 1 | 1083W203 | Winch Arm Extension | 1 |
| 2 | 1083W205 | Winch Base | 1 |
| 3 | Z71640 | Hex Bolt, 5/8NC x 4 | 1 |
| 4 | Z72231 | Hex Lock Nut, 3/8NC | 4 |
| 5 | Z72261 | Hex Lock Nut, 5/8NC | 1 |
| 6 | Z76134 | Flange Bolt, 3/8NC x 1 | 4 |
| 7 | Z76152 | Flange Bolt, 1/2NC x 1-1/4 | 3 |
| 8 | 1061M108 | L Handled Plunger, Compact | 1 |
| 9 | Z14151 | Roll Pin, 3/16" x 1-1/2" | 1 |

Fairlead Assembly Detail

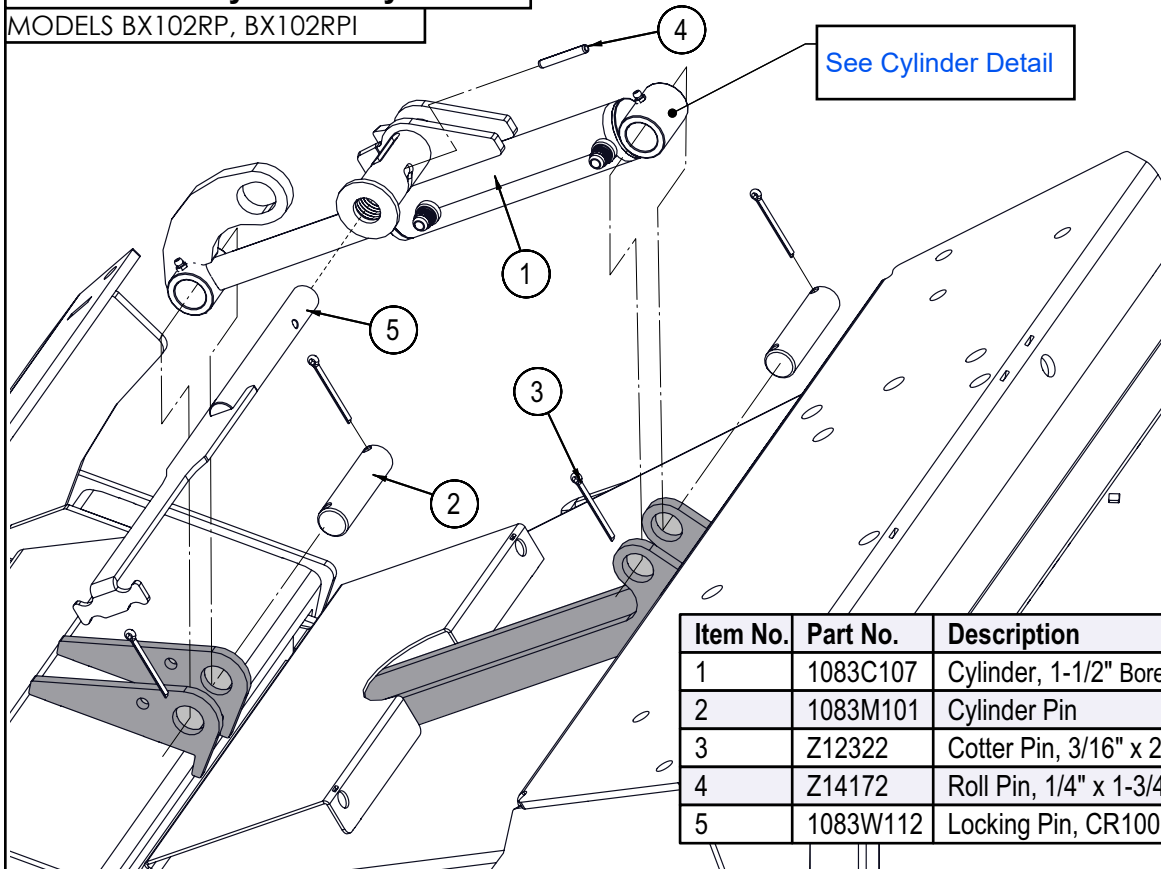
MODELS BX102RP, BX102RPI



| Item | Part No. | Description | Qty |
|------|----------|--------------------------------------|-----|
| 1 | 5081W103 | Bracket, Fairlead | 1 |
| 2 | 5081M109 | Bushing, Fairlead Side | 2 |
| 3 | 5081M111 | Bushing, Fairlead Top | 2 |
| 4 | Z27103 | Fibreglide Bearing 1/2" x 1" | 8 |
| 5 | Z71566 | Hex Bolt, 1/2NC x 6-1/4, 5-1/4 Shank | 2 |
| 6 | Z71567 | Hex Bolt, 1/2NC x 5, 4" Shank | 2 |
| 7 | Z72251 | Hex Lock Nut, 1/2NC | 4 |

Roller Lift Hydraulic Cylinder

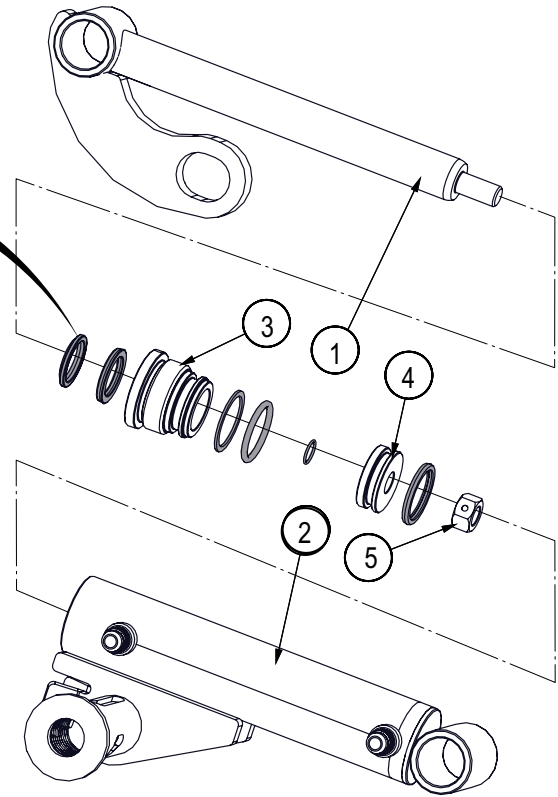
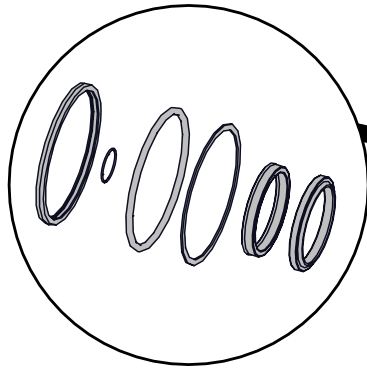
MODELS BX102RP, BX102RPI



| Item No. | Part No. | Description | Qty |
|----------|----------|---|-----|
| 1 | 1083C107 | Cylinder, 1-1/2" Bore x 6" Stroke x Locking | 1 |
| 2 | 1083M101 | Cylinder Pin | 2 |
| 3 | Z12322 | Cotter Pin, 3/16" x 2" | 4 |
| 4 | Z14172 | Roll Pin, 1/4" x 1-3/4" | 1 |
| 5 | 1083W112 | Locking Pin, CR100 Hood | 1 |

Hydraulic Cylinder Detail

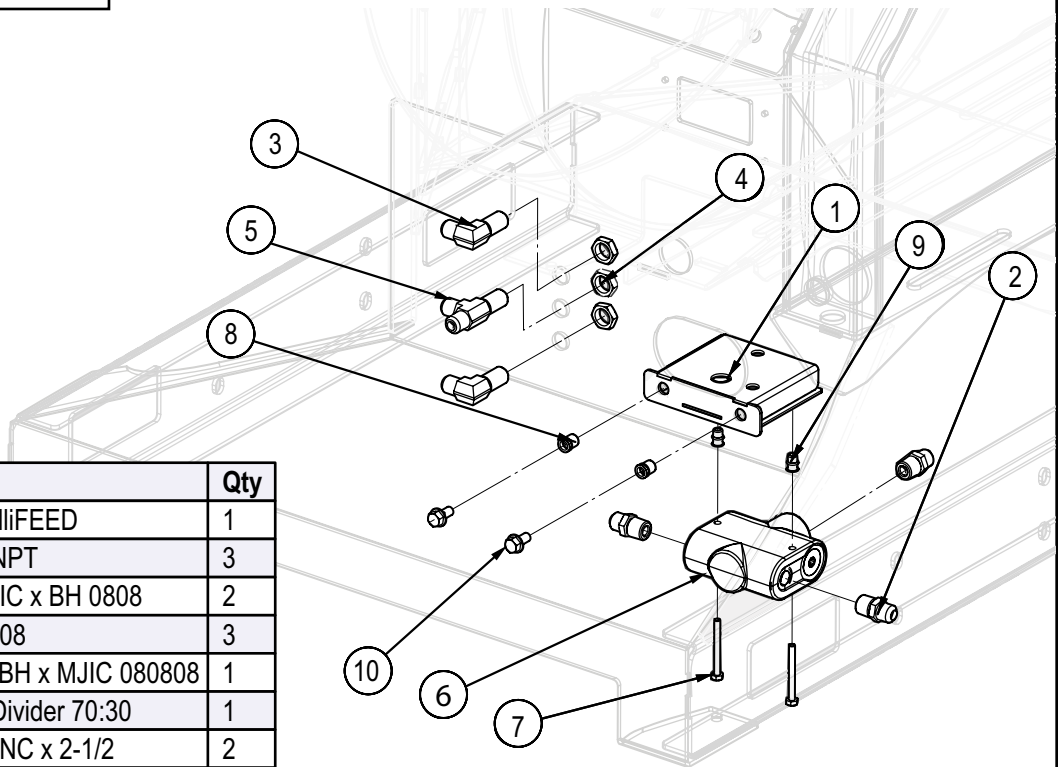
MODELS BX102RPI



| Item No. | Part No. | Description | Qty |
|----------|------------|-------------------------|-----|
| 1 | 1083C1063 | Rod, 1x3/4 | 1 |
| 2 | 1083C1064 | Barrel, 1-1/2" Bore | 1 |
| 3 | G150-100S | Gland, 1-1/2" x 1" | 1 |
| 4 | P500-150SP | Piston, 1-1/2" Bore | 1 |
| 5 | Z72254 | Hex CTR-lock Nut, 1/2NF | 1 |

Flow Divider Detail

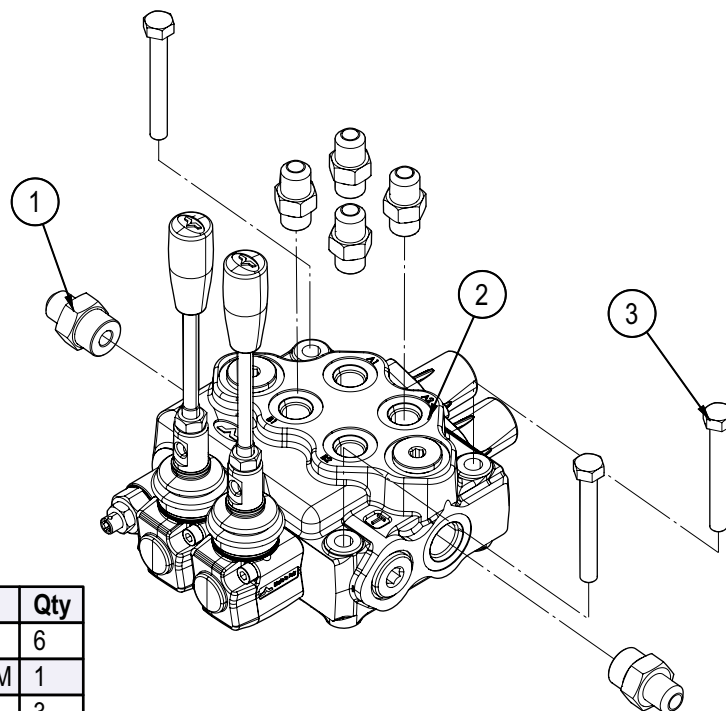
MODELS BX102RPI



| Item No. | Part No. | Description | Qty |
|----------|----------|------------------------------|-----|
| 1 | 1083W151 | BX102R IntelliFEED | 1 |
| 2 | Z51442 | #8 JIC x 1/2NPT | 3 |
| 3 | Z51492 | Elbow 90 MJIC x BH 0808 | 2 |
| 4 | Z51493 | BH Locknut, 08 | 3 |
| 5 | Z51494 | Tee, MJIC x BH x MJIC 080808 | 1 |
| 6 | Z56306 | Brand Flow Divider 70:30 | 1 |
| 7 | Z71125 | Hex Bolt, 1/4NC x 2-1/2 | 2 |
| 8 | Z72958 | Riv-Nut 3/8NC x 150 | 2 |
| 9 | Z72962 | Riv-Nut, 1/4NC x 260 | 2 |
| 1 | Z76133 | Flange Bolt, 3/8NC x 3/4 | 2 |

Control Valve Detail – Winch Option

MODELS BX102RP, BX102RPI

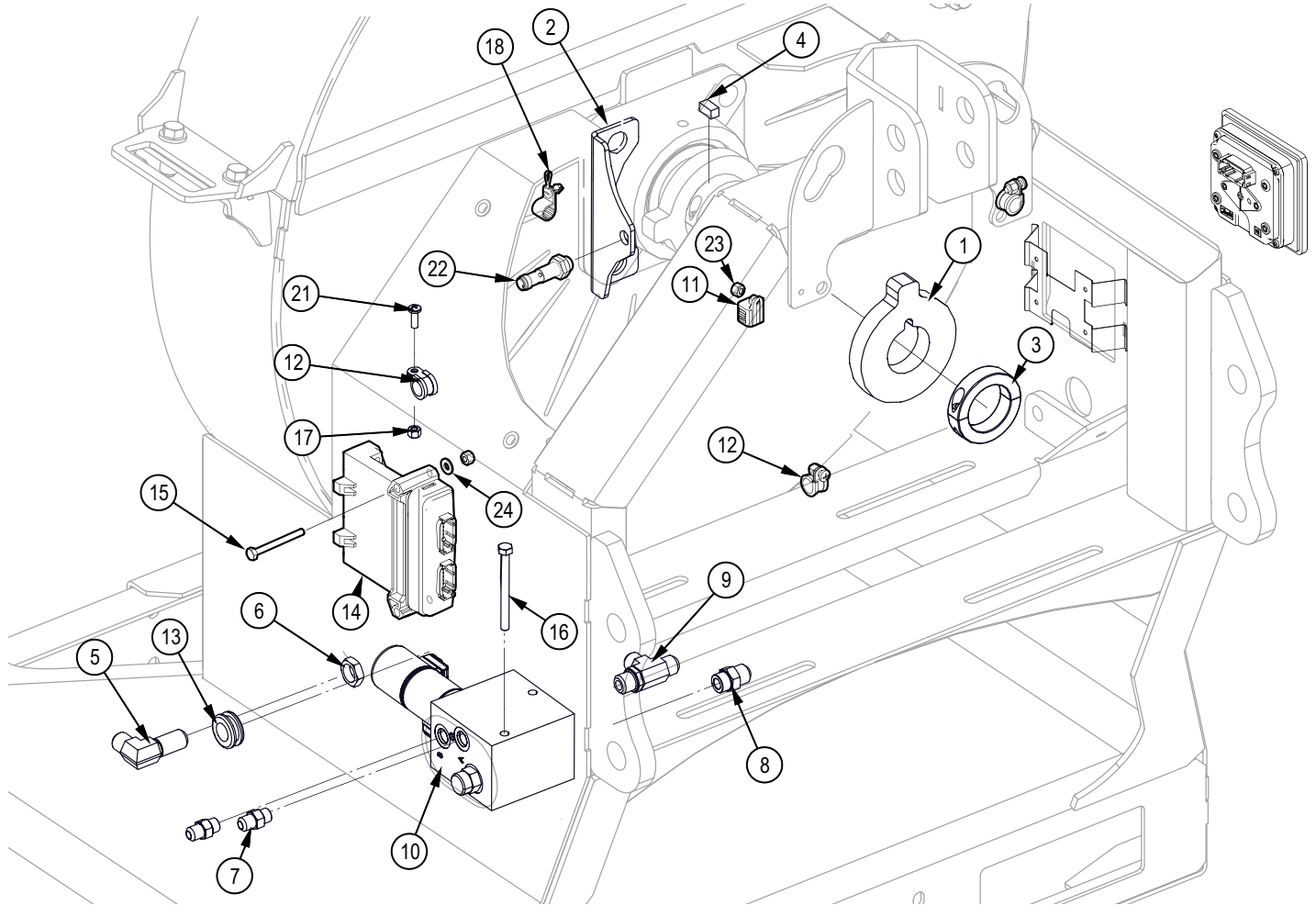
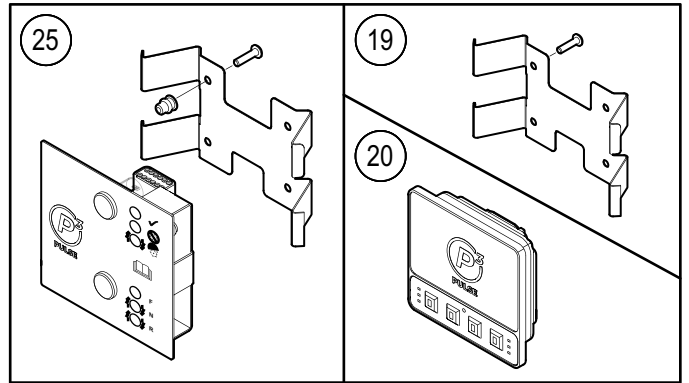


| Item No. | Part No. | Description | Qty |
|----------|----------|-----------------------------|-----|
| 1 | Z51644 | Straight, MJC x MORB 0608 | 6 |
| 2 | Z56218 | Two Spool Valve, VC x 12GPM | 1 |
| 3 | Z71225 | Hex Bolt, 5/16NC x 2-1/2" | 3 |

Seal and Replacement Kits

| | |
|-------------|--|
| 1x SK SD5/1 | Complete seal kit for your part #Z56216) |
| 1x SK SD5/2 | Complete seal kit for your part #Z56219) |
| 1x L5(M8) | Lever box |

P3 Components – BX102RI & RPI

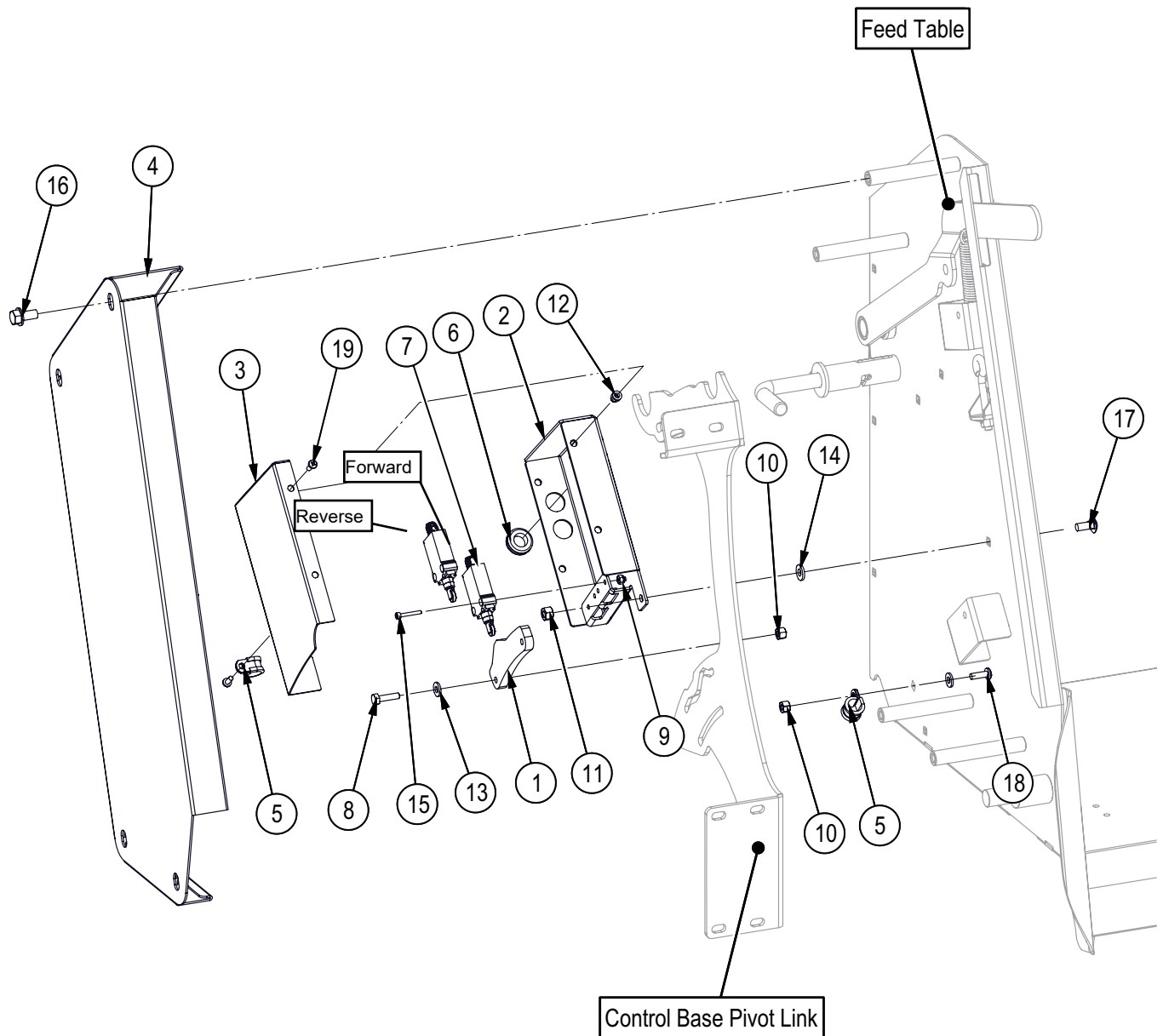


| Item No. | Description | Descriptio | Qty |
|----------|-------------|--------------------------------|-----|
| 1 | 1083L151 | Rotor Speed Indicator, BX102 | |
| 2 | 1083L152 | Sensor Mounting Bracket | 1 |
| 3 | Z46314 | Shaft Collar, 2" ID x 11/16 | 1 |
| 4 | Z46552 | Key, 3/8 x 3/8 x 3/4 | 1 |
| 5 | Z51492 | Elbow 90 MJIC x BH 0808 | 1 |
| 6 | Z51493 | BH Locknut, 0 | |
| 7 | Z51641 | #6ORB x #6JIC | 2 |
| 8 | Z51643 | #8ORB x #8JIC | 1 |
| 9 | Z51673 | Tee, MJIC x MORB x MJIC 080808 | 1 |
| 10 | Z56508 | CR IntelliFEED Manifold 6gpm | 1 |
| 11 | Z62829 | Dust Cap, DT06-6S x Lug | 1 |
| 12 | Z62819 | Rubberized Wire Clamp, 1/2" | 4 |

| Item No. | Description | Descriptio | Qty |
|----------|-------------|----------------------------------|-----|
| 13 | Z62822 | Rubber Grommet 3/4 x 1/4 | 1 |
| 14 | 1062E003 | Controller, 24 Pin V3.0 | 1 |
| 15 | Z71125 | Hex Bolt, 1/4NC x 2-1/2" | 2 |
| 16 | Z71235 | Hex Bolt, 5/16NC x 3-1/2" | 2 |
| 17 | Z72211 | Hex Lock Nut, 1/4NC | 5 |
| 18 | Z62828 | Cable Clamp, P-Type Push In 1/2" | 1 |
| 19 | Z66223 | Bracket, Display Mount | 1 |
| 20 | 1062E004 | Display, 4.3" x 4 Button V3.0 | 1 |
| 21 | Z78301 | Machine Screw, 1/4-20NC x 3/4 | 3 |
| 22 | Z64406 | Prox Sensor, 12mm NOx4mm x M12 | 1 |
| 23 | Z72204 | Hex Lock Nut, #10NF | 1 |
| 24 | Z73111 | SAE Washer, 1/4" | 2 |
| 25 | 1063A059 | Indicator Panel / Mounting Kit | 1 |

Roller Control Components

BX102RI, BX102RPI

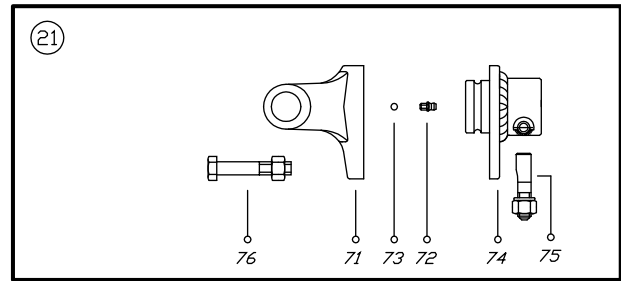
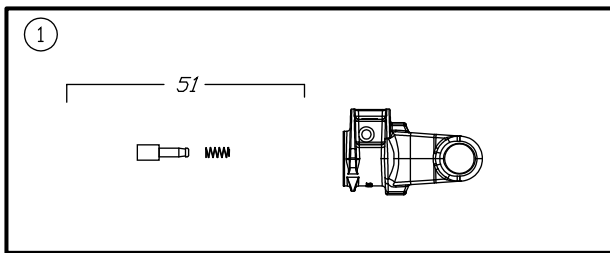
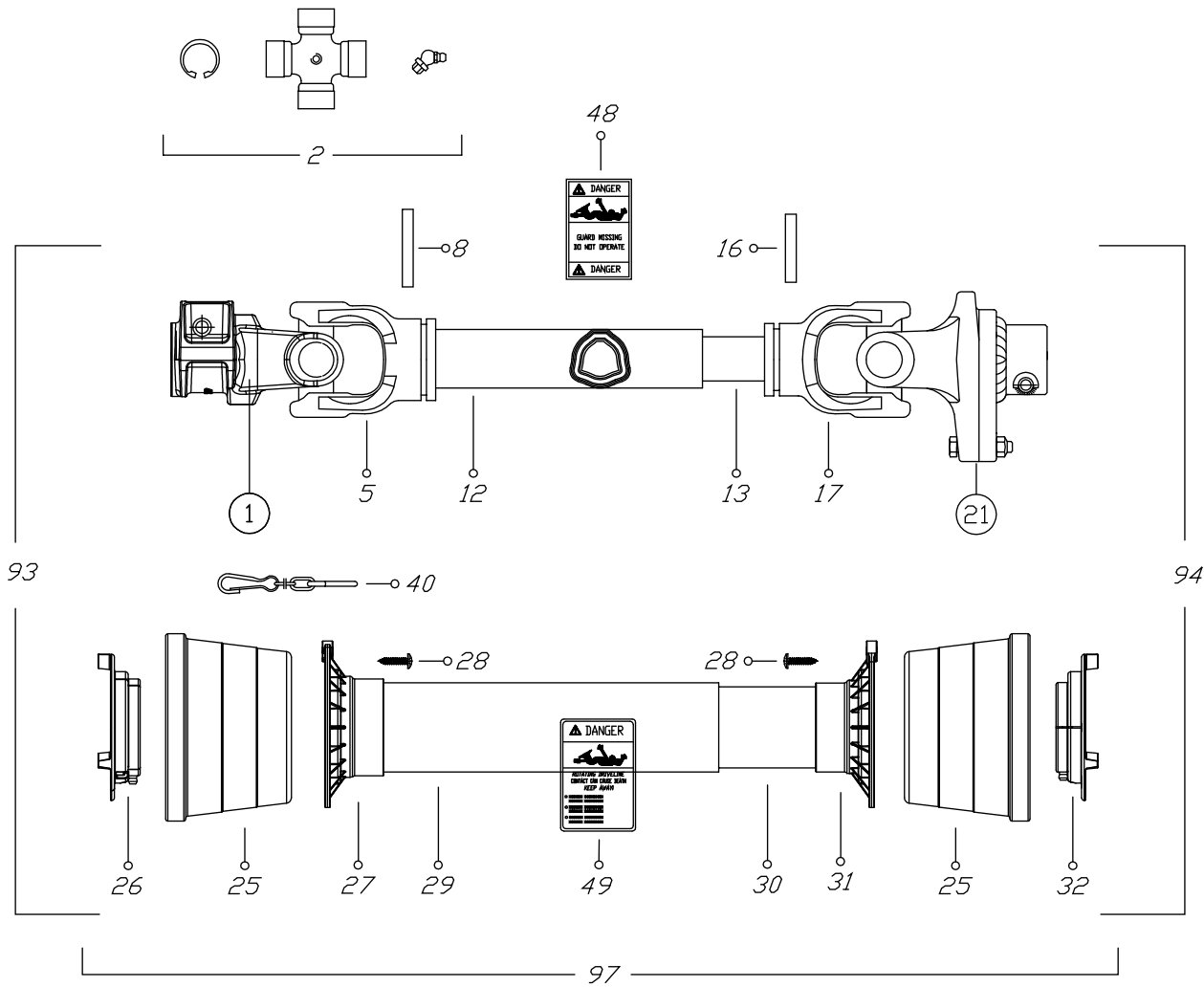


ECN0430

| Item No. | Part No. | Description | Qty |
|----------|----------|--------------------------------|-----|
| 1 | 1060L402 | Feed Pickup Trigger | 1 |
| 2 | 1060L403 | Switch Mount Plate, LH | 1 |
| 3 | 1083L155 | Sensor Box Lid | 1 |
| 4 | 1083L156 | Feed Switch Guard | 1 |
| 5 | Z62819 | Rubberized Wire Clamp, 1/2" | 2 |
| 6 | Z62823 | Rubber Grommet, 5/8" x 1/8" | 2 |
| 7 | Z66115 | Limit Switch, Roller Tip x M12 | 2 |
| 8 | Z71110 | Hex Bolt, 1/4NC x 1" | 2 |
| 9 | Z72202 | Hex Lock Nut, #8NC | 4 |
| 10 | Z72211 | Hex Lock Nut, 1/4NC | 3 |

| Item No. | Part No. | Description | Qty |
|----------|----------|-------------------------------|-----|
| 11 | Z72221 | Hex Lock Nut, 5/16NC | 3 |
| 12 | Z72954 | Rivet Nut, #10NF x 130 | 4 |
| 13 | Z73111 | SAE Washer, 1/4" | 3 |
| 14 | Z73123 | Rubber Washer, 5/16" x 0.093" | 3 |
| 15 | Z75103 | SHCS, #8NC x 1" | 4 |
| 16 | Z76133 | Flange Bolt, 3/8NC x 3/4" | 4 |
| 17 | Z76221 | Carriage Bolt, 5/16NC x 3/4" | 3 |
| 18 | Z78301 | Machine Screw, 1/4NC x 3/4" | 1 |
| 19 | Z78303 | Machine Screw, #10NF x 1/2" | 4 |

PTO Shaft

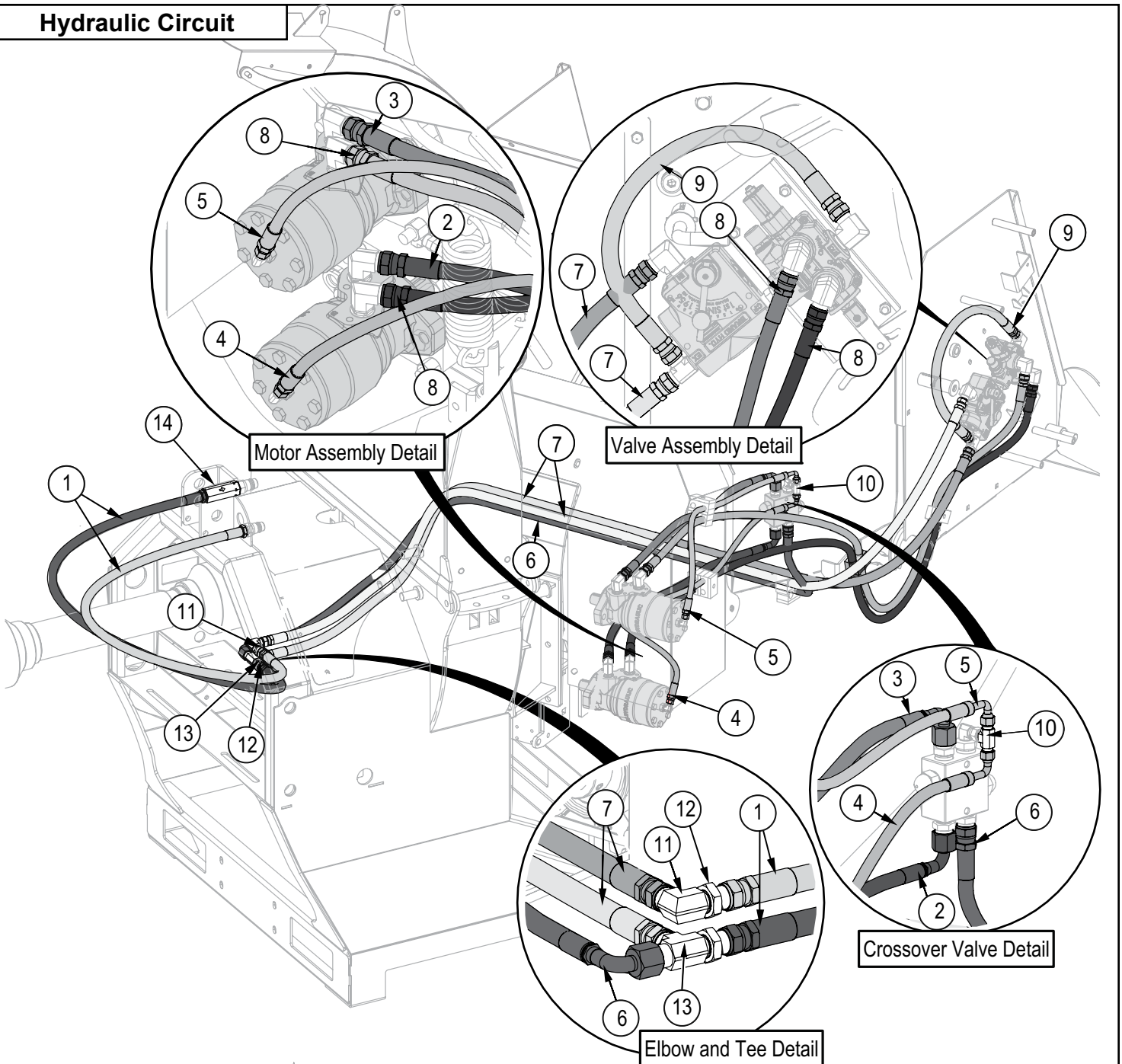


PTO Shaft – P/N Z44802

| POS. | DESCRIPTION | Qty. | Part No. |
|------|------------------------|------|---------------|
| 01 | YOKE | 1 | 0800803A60 |
| 02 | CROSS JOURNAL ASS. | 2 | 08208 |
| 05 | OUTER TUBE YOKE | 1 | 08080021 |
| 08 | FLEXIBLE PIN | 1 | 098701075 |
| 12 | CM. 100 CARDAN TUBE(*) | 1 | 09881544100 |
| 13 | CM. 100 CARDAN TUBE(*) | 1 | 09881455100 |
| 16 | FLEXIBLE PIN | 1 | 098701065 |
| 17 | INNER TUBE YOKE | 1 | 08080011 |
| 21 | SHEAR BOLT YOKE | 1 | 08805A604633 |
| 25 | CONE SHIELD BELL 07-08 | 2 | 021908C001 |
| 26 | OUTER BEARING | 1 | 025508C001 |
| 27 | OUTER BASE CONE 07-08 | 1 | 025408C001 |
| 28 | SCREW | 8 | 0998052242 |
| 29 | OUTER SAFETY TUBE | 1 | 0988981NB8066 |
| 30 | INNER SAFETY TUBE | 1 | 0988975NB8066 |

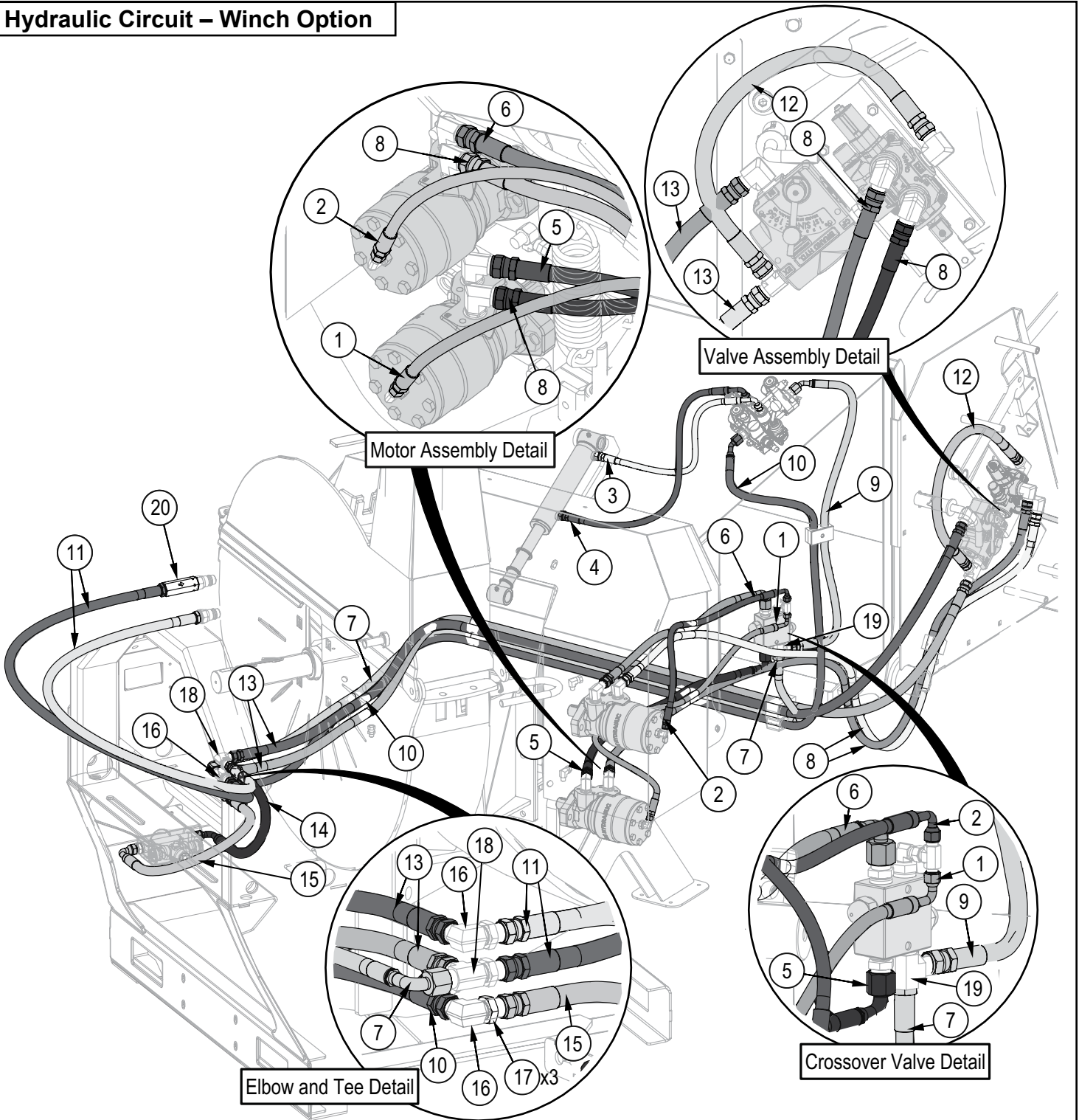
| POS. | DESCRIPTION | Qty. | Part No. |
|------|--|------|--------------------|
| 31 | INNER BASE CONE 07-08 | 1 | 025408C002 |
| 32 | INNER BEARING | 1 | 025508C002 |
| 40 | CHAIN | 1 | 0252000001 |
| 48 | LABEL DANGER OUTER DRIVE TUBE | 1 | 09872006 |
| 49 | EXTERNAL SHIELD LABEL | 1 | 09872003 |
| 51 | COMPLETE PUSH BUTTTON | 1 | 0986014060 |
| 71 | YOKE FOR LB8 | 1 | 088608553 |
| 72 | GREASE NIPPLE | 1 | 0984010150 |
| 73 | STEEL BALL | 24 | 098680516 |
| 74 | HUB | 1 | 08868P70 |
| 75 | CONIC SCREW | 1 | 0408000061 |
| 76 | SHEARBOLT AND NUT M12 x 1.75 x 65 10.9 | 1 | Z19408 (Pack of 5) |
| 93 | OUTER HALF SHAFT | 1 | B8061US2 |
| 94 | INNER HALF SHAFT | 1 | B8061US1098001 |
| 97 | SAFETY GUARD | 1 | 083US08061 |

Hydraulic Circuit



| Item No. | Part No. | Description | Qty |
|----------|----------|------------------------------------|-----|
| 1 | 1021F101 | 1/2" Hose, FJIC08 x MP08 x 84" | 2 |
| 2 | 1021F102 | 3/8" Hose, FJIC08 x 90FJIC08 x 23" | 1 |
| 3 | 1021F103 | 3/8" Hose, FJIC08 x 90FJIC08 x 21" | 1 |
| 4 | 1021F104 | 1/4" Hose, FJIC04 x 90FJIC04 x 34" | 1 |
| 5 | 1021F105 | 1/4" Hose, FJIC04 x 90FJIC04 x 26" | 1 |
| 6 | 1021F108 | 3/8" Hose, FJIC08 x 90FJIC08 x 82" | 1 |
| 7 | 1021F109 | 1/2" Hose, FJIC08 x FJIC08 x 96" | 2 |
| 8 | 1021F110 | 3/8" Hose, FJIC08 x FJIC08 x 65" | 2 |
| 9 | 1023F108 | 1/2" Hose, FJIC08 x FJIC08 x 22" | 1 |
| 10 | Z51488 | Tee, MJIC x MJIC x MJIC 040404 | 1 |
| 11 | Z51492 | Elbow 90, MJIC x BH 0808 | 1 |
| 12 | Z51493 | BH Locknut, 08 | 2 |
| 13 | Z51494 | Tee, MJIC x BH x MJIC 080808 | 1 |
| 14 | Z56102 | Check Valve, FP08 x 0PSI | 1 |

Hydraulic Circuit – Winch Option

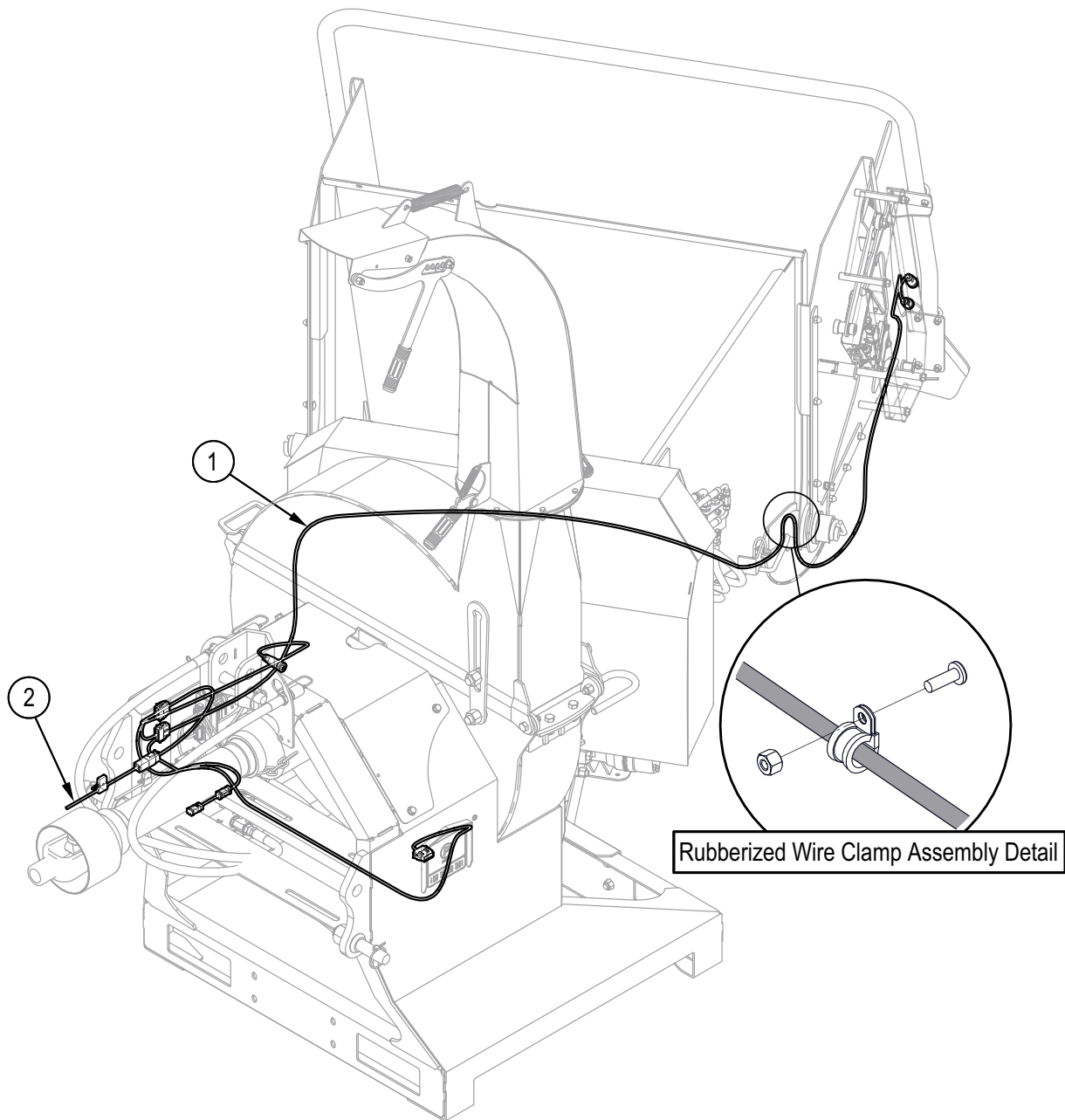


| Item No. | Part No. | Description | Qty |
|----------|----------|------------------------------------|-----|
| 1 | Z52126 | 1/4 Hose, FJIC04 x 90FJIC04 x 34" | 1 |
| 2 | Z52127 | 1/4 Hose, FJIC04 x 90FJIC04 x 26" | 1 |
| 3 | Z52135 | 1/4 Hose, FJIC06 x 90FJIC06 x 18" | 1 |
| 4 | Z52136 | 1/4 Hose, FJIC06 x 90FJIC06 x 23" | 1 |
| 5 | Z52250 | 3/8 Hose, FJIC08 x 90FJIC08 x 23" | 1 |
| 6 | Z52251 | 3/8 Hose, FJIC08 x 90FJIC08 x 21" | 1 |
| 7 | Z52252 | 3/8 Hose, FJIC08 x 90FJIC08 x 82" | 1 |
| 8 | Z52253 | 3/8 Hose, FJIC08 x FJIC08 x 65" | 2 |
| 9 | Z52257 | 3/8 Hose, FJIC08 x 45FJIC06 x 30" | 1 |
| 10 | Z52258 | 3/8 Hose, FJIC08 x 45FJIC06 x 106" | 1 |

| Item No. | Part No. | Description | Qty |
|----------|----------|-----------------------------------|-----|
| 11 | Z52308 | 1/2 Hose, MP08 x FJIC08 x 54" | 2 |
| 12 | Z52343 | 1/2 Hose, FJIC08 x FJIC08 x 22" | 1 |
| 13 | Z52344 | 1/2 Hose, FJIC | 2 |
| 14 | Z52345 | 1/2 Hose, FJIC08 x 90FJIC08 x 16" | 1 |
| 15 | Z52346 | 1/2 Hose, FJIC08 x 90FJIC08 x 20" | 1 |
| 16 | Z51492 | Elbow 90 MJIC x BH 0808 | 2 |
| 17 | Z51493 | BH Locknut, 08 | 3 |
| 18 | Z51494 | Tee, MJIC x BH x MJIC 080808 | 1 |
| 19 | Z51487 | Tee MJIC x MP x MJIC 080808 | 1 |
| 20 | Z56102 | Check Valve, FP08 x 0PSI | 1 |

P3 Wiring Harness

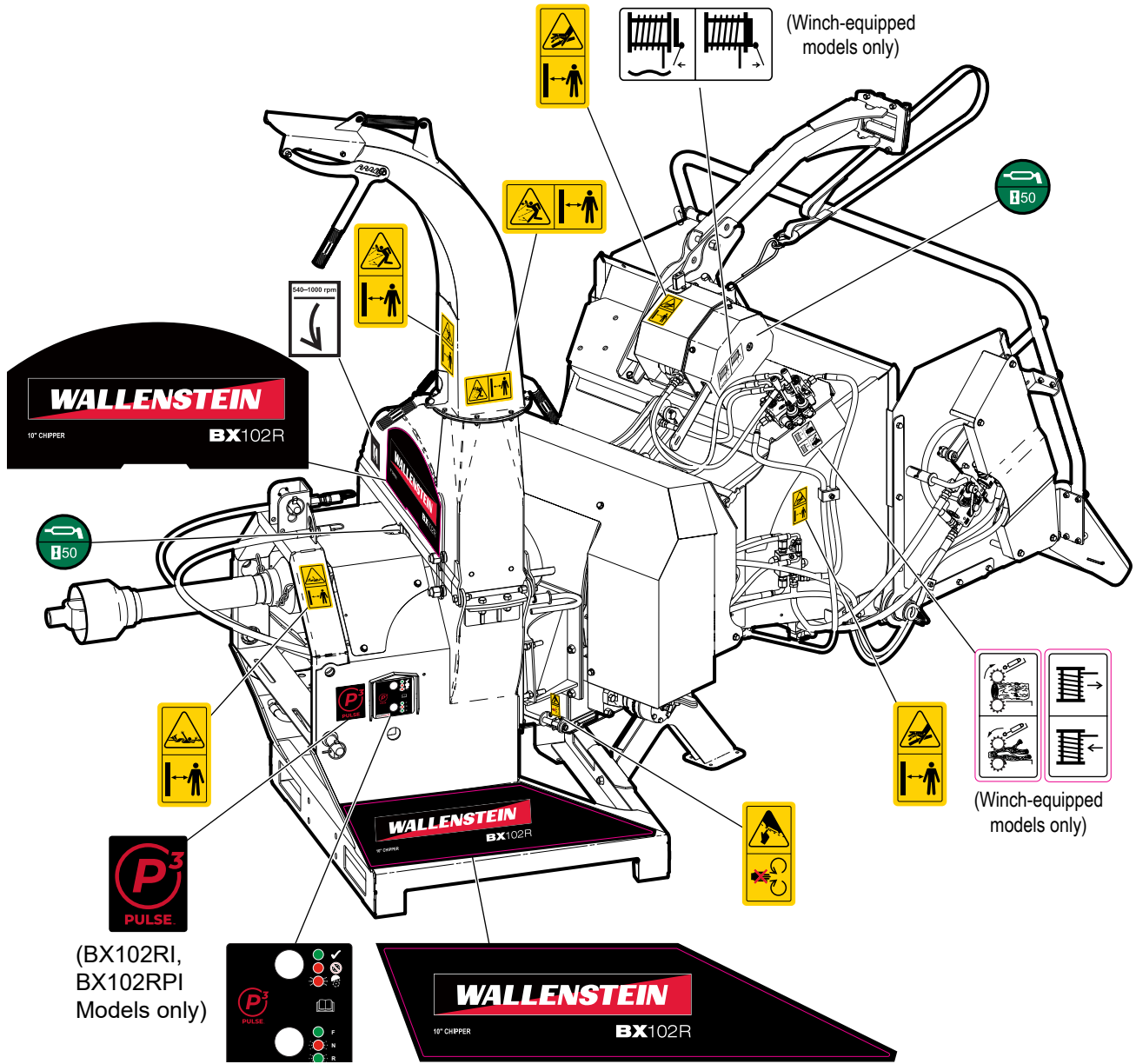
BX102RI, BX102RPI



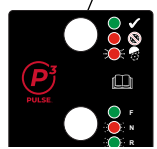
| Item No. | Part No. | Description | Qty |
|----------|----------|---------------------------|-----|
| 1 | 1083F159 | Harness, P3 Logic | 1 |
| 2 | 1083F158 | Harness, Feed Logic 6 Pin | 1 |

Decal Layout

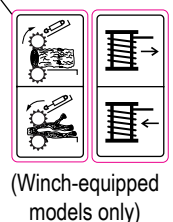
IMPORTANT! If parts are replaced that have safety signs on them, new signs must be applied. Safety signs must always be replaced if they become damaged, are removed, or become illegible.



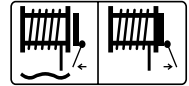
(BX102RI, BX102RPI Models only)



(only on BX52RI models that have an indicator panel)



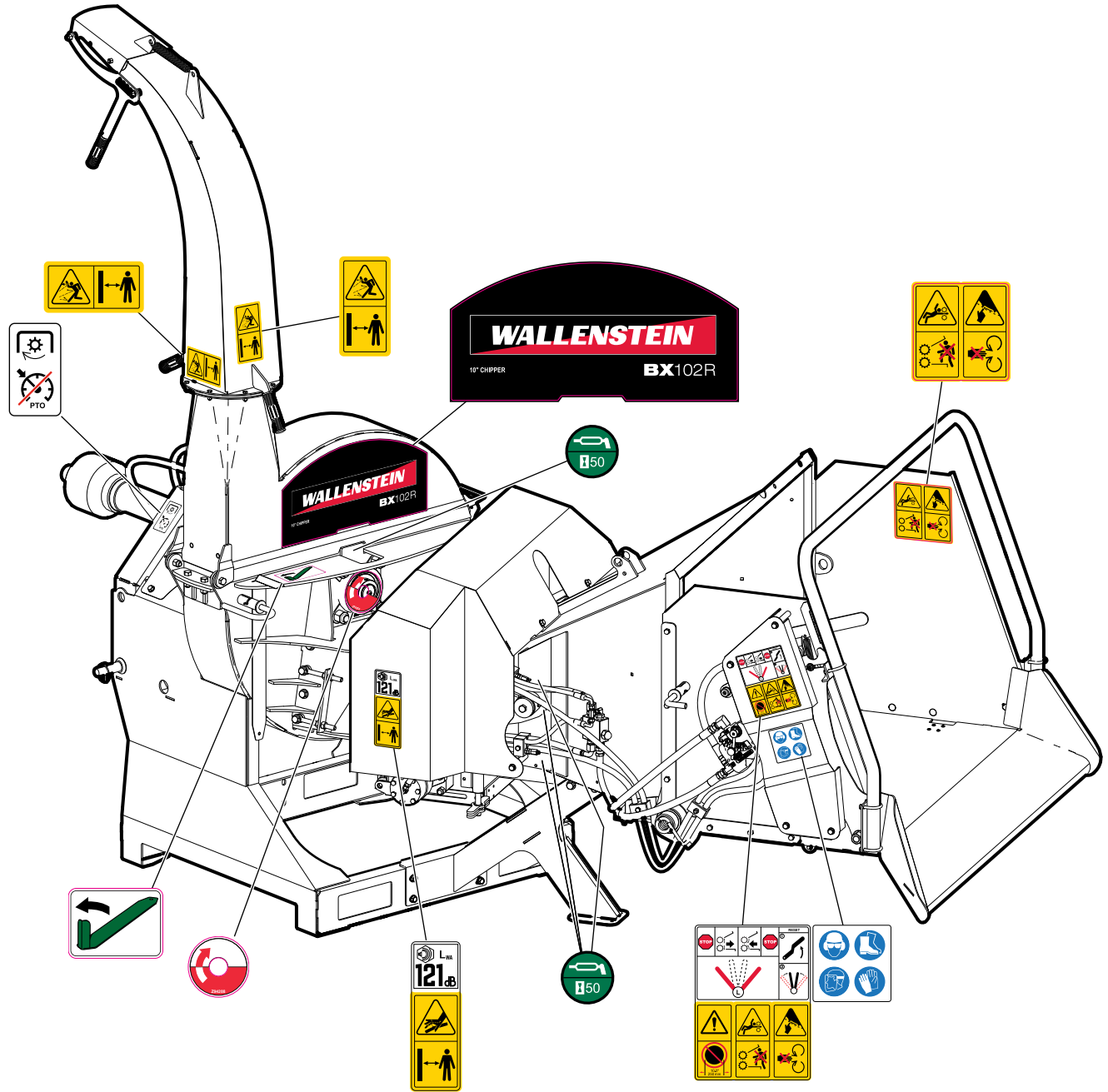
(Winch-equipped models only)

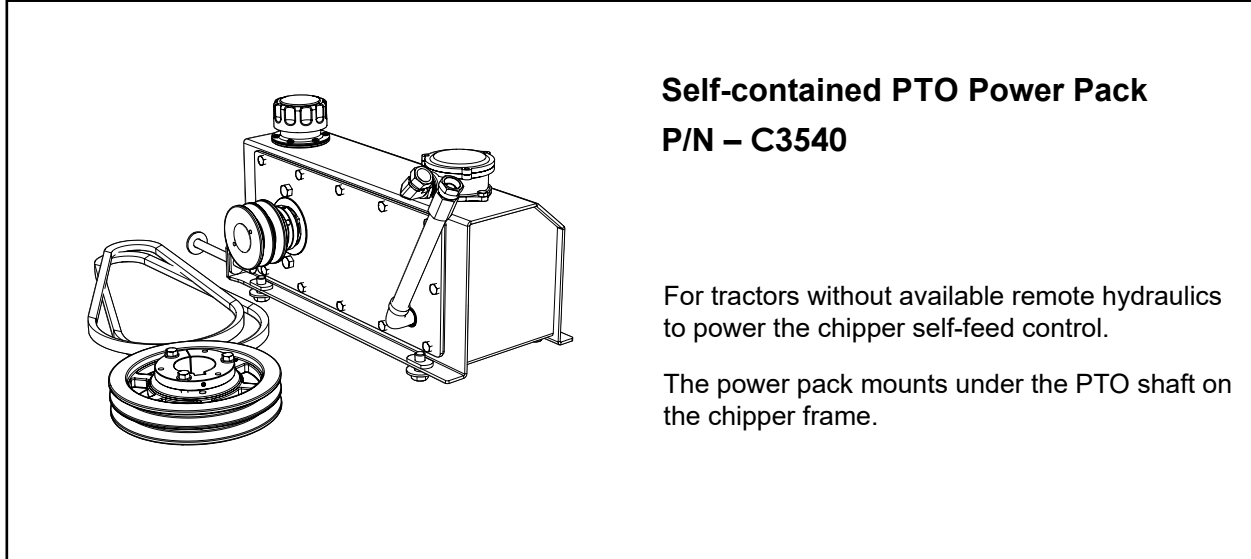


(Winch-equipped models only)



Decal Layout



Accessories**Self-contained PTO Power Pack
P/N – C3540**

For tractors without available remote hydraulics to power the chipper self-feed control.

The power pack mounts under the PTO shaft on the chipper frame.

Call your dealer for pricing and availability


Common Bolt Torque Values

Checking Bolt Torque

The tables shown give correct torque values for various bolts and capscrews. Tighten all bolts to the torque values specified in the table, unless indicated otherwise. Check tightness of bolts periodically.

IMPORTANT! If replacing hardware, use fasteners of the same grade.

IMPORTANT! Torque figures indicated in the table are for non-greased or non-oiled threads. Do not grease or oil threads unless indicated otherwise. When using a thread locker, increase torque values by 5%.

 **NOTE:** Bolt grades are identified by their head markings.

Imperial Bolt Torque Specifications

| Bolt Diameter | Torque Value | | | | | |
|---------------|--------------|-----|-----------|-----|-----------|------|
| | SAE Gr. 2 | | SAE Gr. 5 | | SAE Gr. 8 | |
| | lbf•ft | N•m | lbf•ft | N•m | lbf•ft | N•m |
| 1/4" | 6 | 8 | 9 | 12 | 12 | 17 |
| 5/16" | 10 | 13 | 19 | 25 | 27 | 36 |
| 3/8" | 20 | 27 | 33 | 45 | 45 | 63 |
| 7/16" | 30 | 41 | 53 | 72 | 75 | 100 |
| 1/2" | 45 | 61 | 80 | 110 | 115 | 155 |
| 9/16" | 60 | 95 | 115 | 155 | 165 | 220 |
| 5/8" | 95 | 128 | 160 | 215 | 220 | 305 |
| 3/4" | 165 | 225 | 290 | 390 | 400 | 540 |
| 7/8" | 170 | 230 | 420 | 570 | 650 | 880 |
| 1" | 225 | 345 | 630 | 850 | 970 | 1320 |



SAE Gr. 2



SAE Gr. 5



SAE Gr. 8

Metric Bolt Torque Specifications

| Bolt Diameter | Torque Value | | | |
|---------------|--------------|-------|----------|-------|
| | Gr. 8.8 | | Gr. 10.9 | |
| | lbf•ft | N•m | lbf•ft | N•m |
| M3 | 0.4 | 0.5 | 1.3 | 1.8 |
| M4 | 2.2 | 3 | 3.3 | 4.5 |
| M6 | 7 | 10 | 11 | 15 |
| M8 | 18 | 25 | 26 | 35 |
| M10 | 37 | 50 | 52 | 70 |
| M12 | 66 | 90 | 92 | 125 |
| M14 | 83 | 112 | 116 | 158 |
| M16 | 166 | 225 | 229 | 310 |
| M20 | 321 | 435 | 450 | 610 |
| M30 | 1,103 | 1 495 | 1,550 | 2 100 |



8.8



10.9

Hydraulic Fitting Torque Values

Tightening Flare Type Tube Fittings

1. Check flare and flare seat for defects that might cause leakage.
2. Align tube with fitting before tightening.
3. Hand-tighten swivel nut until snug.
4. To prevent twisting the tube, use two wrenches. Place one wrench on the connector body and tighten the swivel nut with the second. Torque to values shown.

If a torque wrench is not available, use the FFFT (Flats From Finger Tight) method.

| Hydraulic Fitting Torque | | | | | |
|--------------------------|-----------------------|--------------|---------|-------------------------|-------|
| Tube Size OD | Hex Size Across Flats | Torque value | | Flats From Finger Tight | |
| | | lbf•ft | N•m | Flats | Turns |
| 3/16 | 7/16 | 6 | 8 | 2 | 1/6 |
| 1/4 | 9/16 | 11–12 | 15–17 | 2 | 1/6 |
| 5/16 | 5/8 | 14–16 | 19–22 | 2 | 1/6 |
| 3/8 | 11/16 | 20–22 | 27–30 | 1-1/4 | 1/6 |
| 1/2 | 7/8 | 44–48 | 59–65 | 1 | 1/6 |
| 5/8 | 1 | 50–58 | 68–79 | 1 | 1/6 |
| 3/4 | 1-1/4 | 79–88 | 107–119 | 1 | 1/8 |
| 1 | 1-5/8 | 117–125 | 158–170 | 1 | 1/8 |

Values shown are for non-lubricated connections.