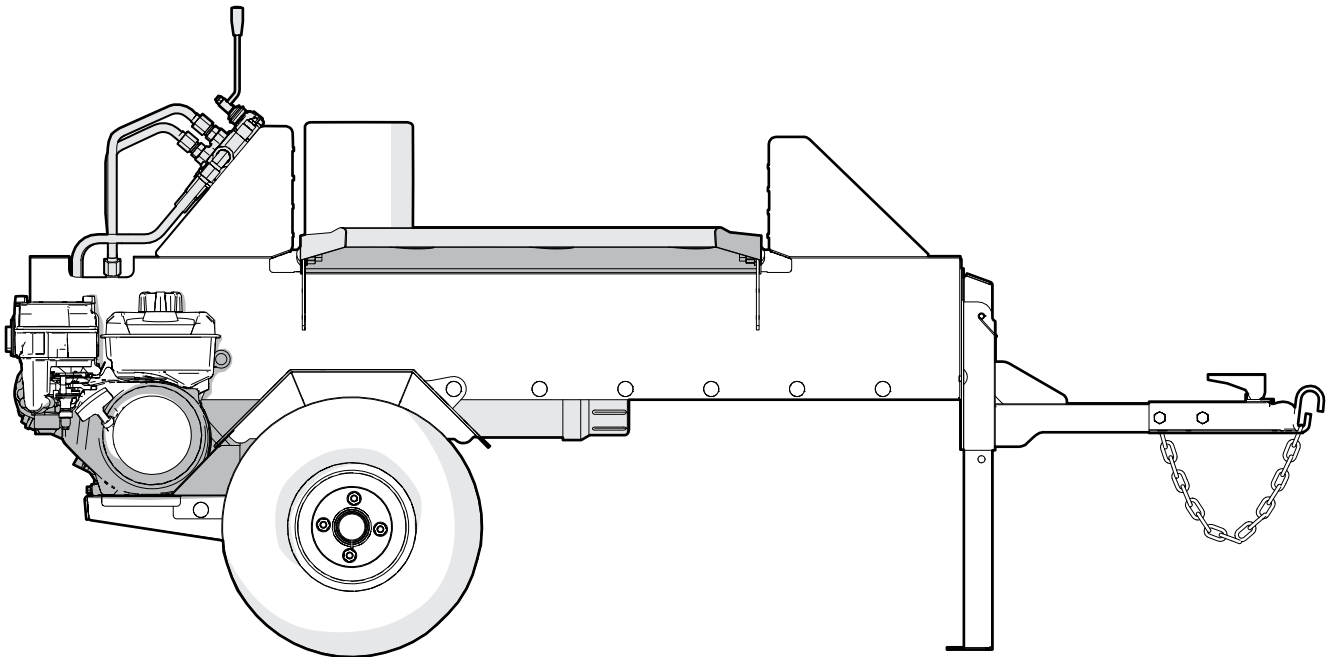


# PARTS MANUAL

---

Serial number 1102386 and up

## WXT20H Log Splitter



---

Revision B Apr-2024

Part Number: 2074T100

**WALLENSTEIN**

## **Table of Contents**

<b>Introduction .....</b>	<b>3</b>
<b>Model and Serial Number Location.....</b>	<b>3</b>
<b>Main Frame Assembly.....</b>	<b>4</b>
<b>Log Base Assembly .....</b>	<b>5</b>
<b>Main Base Assembly.....</b>	<b>6</b>
<b>Engine and Hydraulics Assembly .....</b>	<b>7</b>
<b>Valve Assembly .....</b>	<b>8</b>
<b>Hydraulic Circuit.....</b>	<b>9</b>
<b>Label Locations .....</b>	<b>10</b>
<b>Accessories .....</b>	<b>11</b>
<b>Bolt Torque .....</b>	<b>12</b>
<b>Hydraulic Fitting Torque.....</b>	<b>13</b>
<b>Lug Nut Torque .....</b>	<b>13</b>

## Introduction

### **! WARNING!**

For safety, operation, and maintenance information, see the Operator's Manual for your product.

Only qualified people are approved to maintain the machine.

### **! WARNING!**

Replace all safety labels that are missing, damaged, or illegible. If a component is replaced and it has a safety label on it, apply a safety label to the new component. If a person operates a machine with missing, damaged, or illegible safety labels it puts them at risk of serious injury or death.

W100

This document provides information about the original equipment manufacturer (OEM) components (parts). Always replace a part with the correct OEM part. For service, support, or to order parts, contact your local Wallenstein Equipment dealer or distributor.

Always provide the model and serial number of your Wallenstein product when you order parts, or request service or other information. The model and serial number location is shown in the following illustration.

Record the model and serial number of your product here:

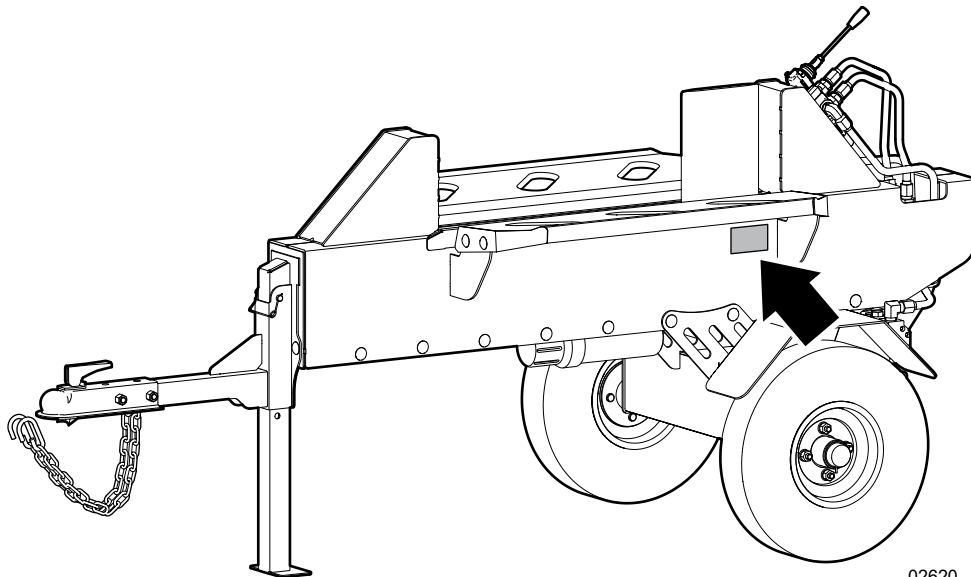
<b>Model</b>	
<b>Serial Number</b>	

The information contained in this document was current at the revision date noted on the bottom of each page. Wallenstein Equipment reserves the right to change product specifications at any time without notice. If your product specifications are different from the information in this document, contact your local dealer or distributor. To find a local dealer or distributor, go to [WallensteinEquipment.com](http://WallensteinEquipment.com) and select **Dealer Locator** at the bottom of the page.

**Wallenstein Equipment Inc. • © 2024. All rights reserved.**

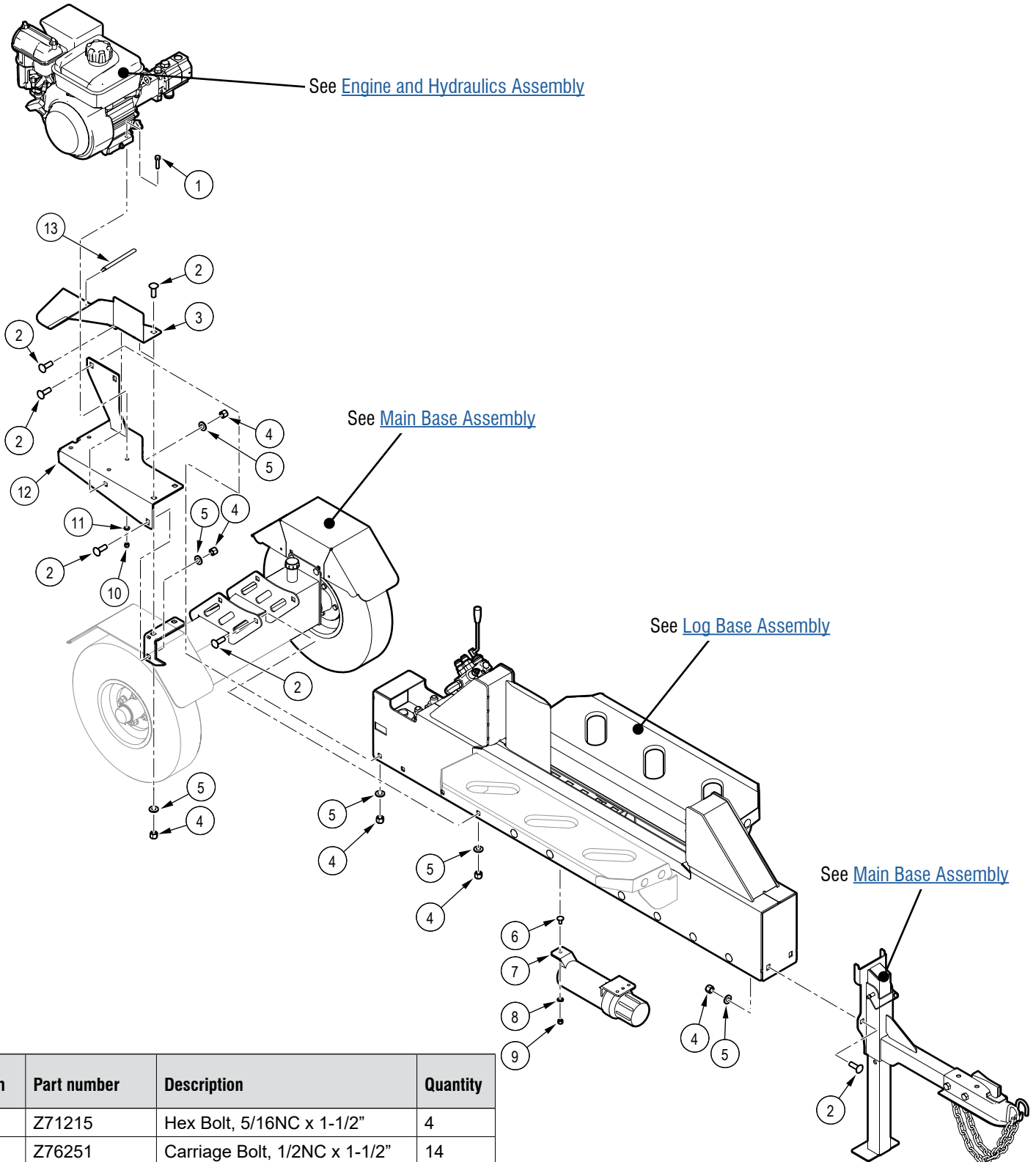
No part of this work may be copied, reproduced, replaced, distributed, published, displayed, modified, or transferred in any form or by any means except with the prior permission of Wallenstein Equipment Inc.

## Model and Serial Number Location



02620

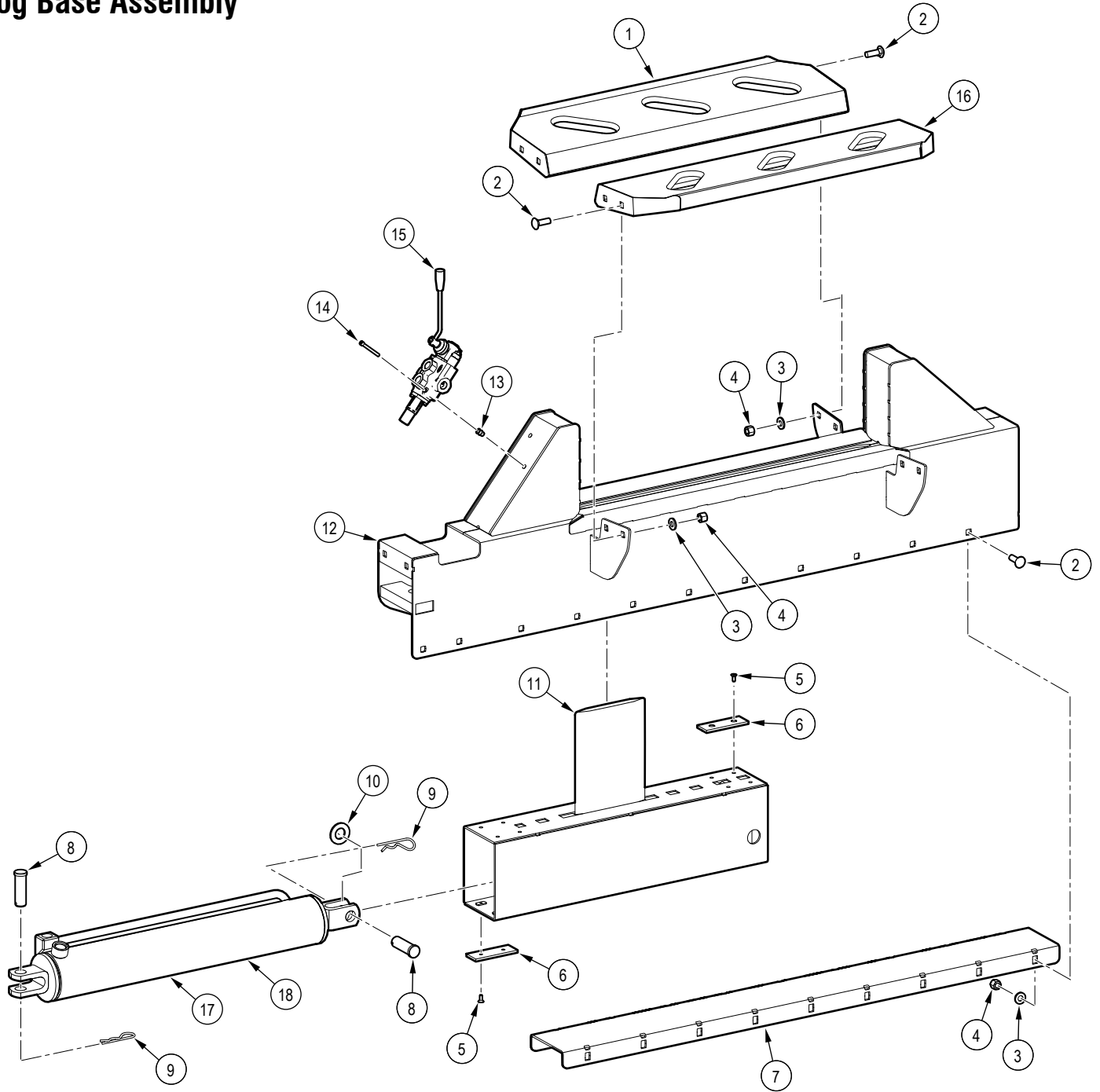
# Main Frame Assembly



Item	Part number	Description	Quantity
1	Z71215	Hex Bolt, 5/16NC x 1-1/2"	4
2	Z76251	Carriage Bolt, 1/2NC x 1-1/2"	14
3	2074W121	Deflector Weldment	1
4	Z72251	Hex Lock Nut, 1/2NC	14
5	Z73151G8	SAE Washer, 1/2" Grade 8	14
6	Z79132	Weld Screw, 5/16NC x 5/8"	1
7	Z96503	Manual Tube, 3-1/2" Short	1
8	Z73122G8	SAE Washer, 5/16" Grade 8	1
9	Z72221	Hex Lock Nut, 5/16NC	1

Item	Part number	Description	Quantity
10	Z72221	Hex Lock Nut, 5/16NC	4
11	Z73122G8	SAE Washer, 5/16" Grade 8	4
12	2074W120	Engine Mount, Weldment	1
13	Z92504	Rubber Edge Trim, 1/16"	1

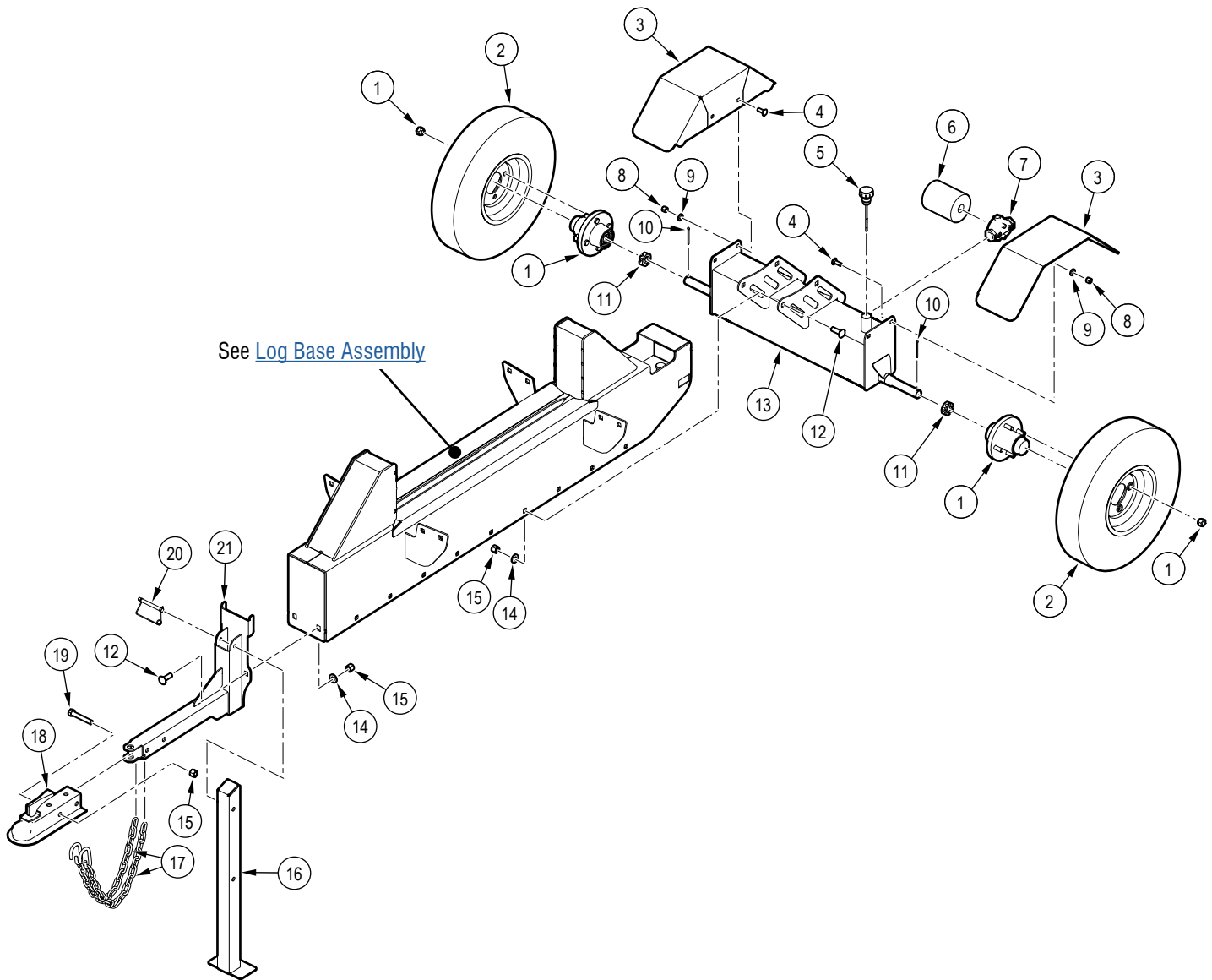
# Log Base Assembly



Item	Part number	Description	Quantity
1	2074W117	Table Weldment, LH	1
2	Z76251	Carriage Bolt, 1/2NC x 1-1/2"	14
3	Z73151G8	SAE Washer, 1/2" Grade 8	14
4	Z72251	Hex Lock Nut, 1/2NC	14
5	Z75213	FHCS, 1/4NC x 5/8"	16
6	2074S002	Low Friction Slider	8
7	2074W119	Linear Bearing Bottom, Weldment	1
8	2074M108	Clevis Pin, 1144SP, 1" x 3", 2-5/8" Usable	2
9	Z12245	Hitch Pin Clip, 11/64" x 3-3/4"	2

Item	Part number	Description	Quantity
10	Z73191G8	SAE Washer, 1" Grade 8	2
11	2074W111	Knife Slider Weldment	1
12	2074W103	Linear Rail Weldment	1
13	Z72962	Rivet Nut, 1/4NC x 260	2
14	Z75117	SHCS, 1/4NC x 2-1/4"	2
15	Z56223-M	Single Spool Valve	1
16	2074W118	Table Weldment, RH	1
17	2074C101	Cylinder, 4 x 24 x 1-1/2	1
18	SLK-4015	Seal Kit, 4" x 1-1/2"(not shown)	1

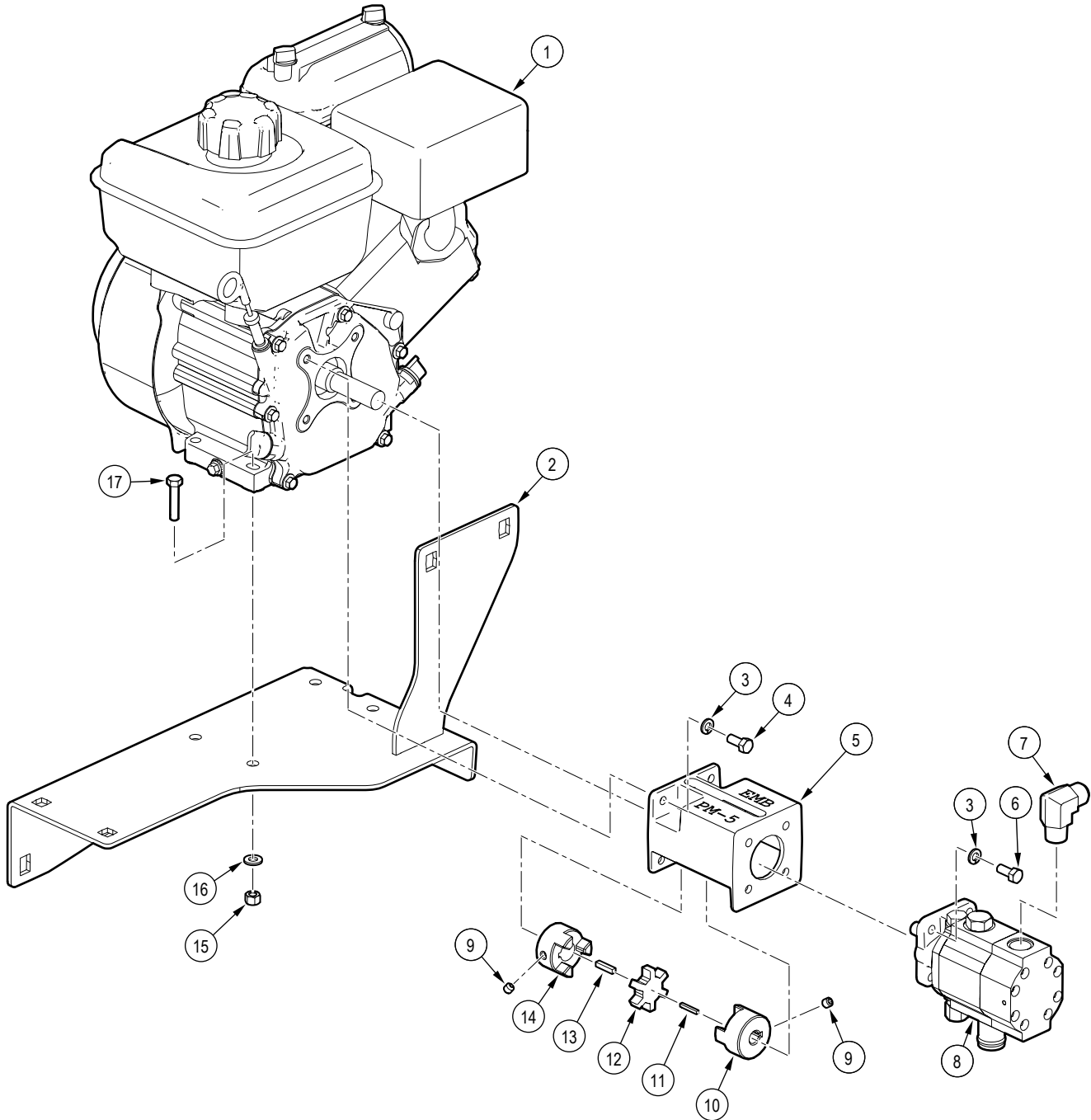
# Main Base Assembly



Item	Part number	Description	Quantity
1	Z91202	Idler Hub Assembly, 1000lbs x 4on4" x 1"	2
2	Z91335	Wheels 5.70-8 4x4"	2
3	2074L747	Fender, 18" Wheels	2
4	Z76231	Carriage Bolt, 3/8NC x 1"	4
5	Z55402	Vented Plug Dipstick x 5"	1
6	Z55301	Particulate Filter, FP12	1
7	Z55302	Filter Cap, MP12 x FP12	1
8	Z72231	Hex Lock Nut, 3/8NC	4
9	Z73131G8	SAE Washer, 3/8" Grade 8	4
10	Z12341	Cotter Pin, 5/32" x 2"	2
11	Z72691	Castle Nut, 1NF x 9/16" Thick	2

Item	Part number	Description	Quantity
12	Z76251	Carriage Bolt, 1/2NC x 1-1/2"	4
13	2074W105	Weldment, Tank	1
14	Z73151G8	SAE Washer, 1/2" Grade 8	4
15	Z72251	Hex Lock Nut, 1/2NC	6
16	2074L166	Leg	1
17	Z92303	Safety Chain, 1/4" Gr43 x 2ft x 6,000lbs	2
18	Z91614	Hitch Coupler, 2" Ball x 2" x 3500lbs	1
19	Z71530	Hex Bolt, 1/2NC x 3"	2
20	Z12433	Snap Lock Pin, 3/8" x 3"	1
21	2074W115	Tongue, Weldment	1

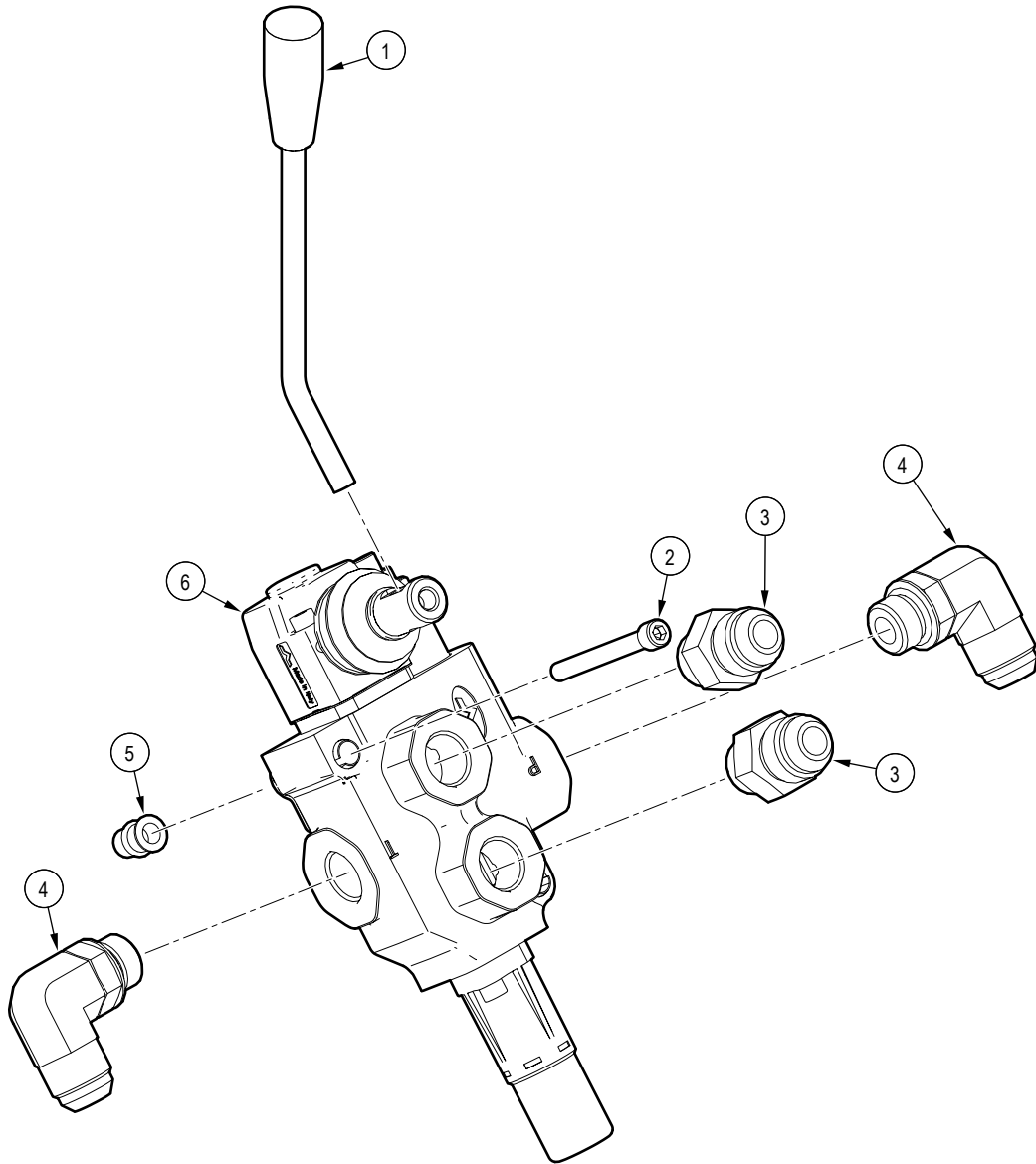
# Engine and Hydraulics Assembly



Item	Part number	Description	Quantity
1	Z47752	Vanguard 6.5 hp (203 cc)	1
2	2074W120	Engine Mount, Weldment	1
3	Z73321	Split Lock Washer, 5/16"	8
4	Z71273	Hex Bolt, 5/16NF x 3/4"	4
5	Z53801	Pump Mount, PM-5	1
6	Z71207	Hex Bolt, 5/16NC x 3/4"	4
7	Z514503	Elbow 90, MJIC x MP 1008	1
8	Z53204	Two-Stage Pump, 11GPM	1
9	Z74111	Set Screw, 1/4NC x 1/4"	2

Item	Part number	Description	Quantity
10	Z46410	Shaft Coupling, L075 x 1/2"	1
11	Z46511	Key, 1/8" x 1/8" x 7/8"	1
12	Z46408	Spider, L075	1
13	Z46521	Key, 3/16" x 3/16" x 7/8"	1
14	Z46406	Shaft Coupler, L075 x 3/4"	1
15	Z72221	Hex Lock Nut, 5/16NC	4
16	Z73122G8	SAE Washer, 5/16" Grade 8	4
17	Z71215	Hex Bolt, 5/16NC x 1-1/2"	4

# Valve Assembly



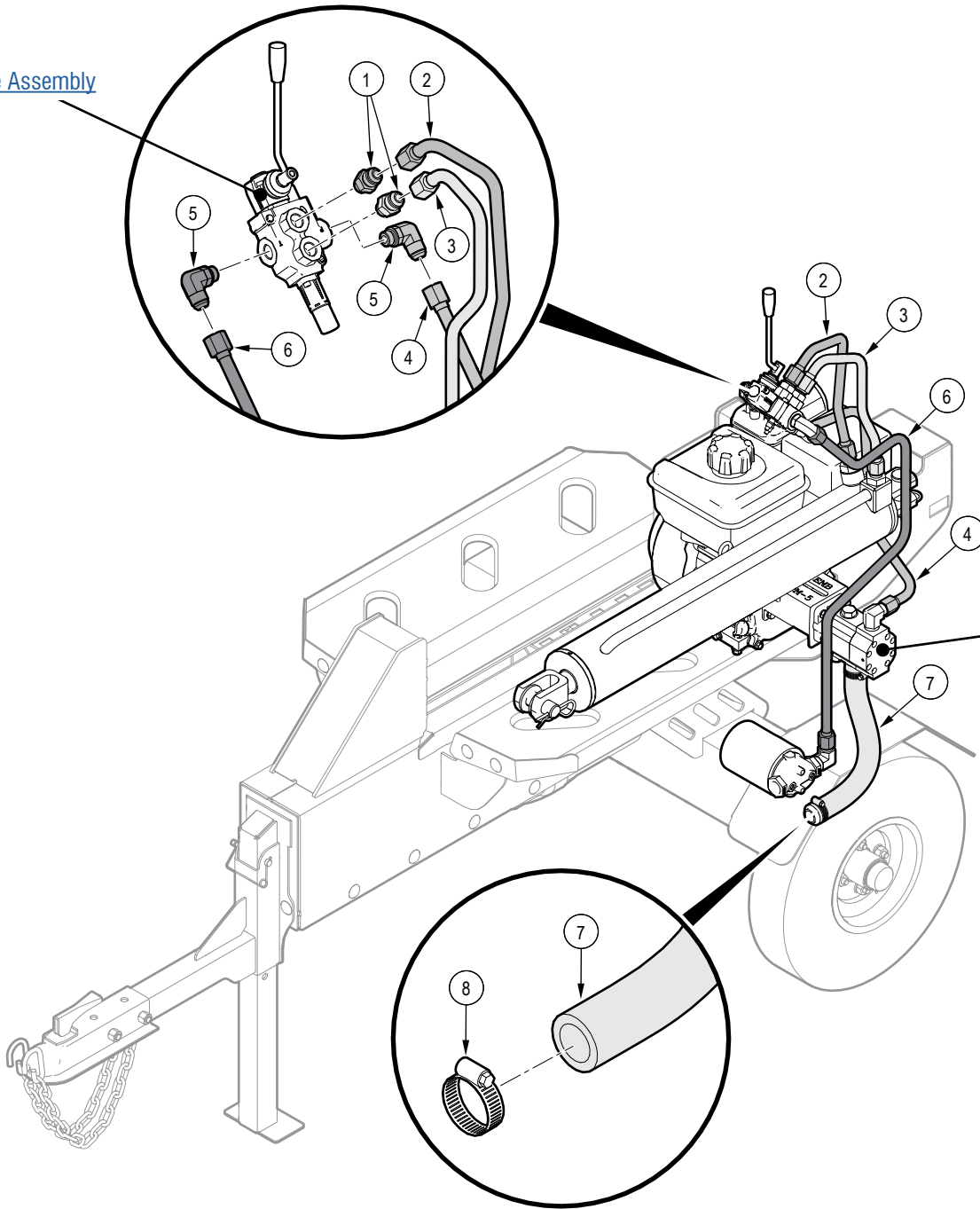
Item	Part number	Description	Quantity
1	2074M109	40 Degree Handle for Z56223	1
2	Z75117	SHCS, 1/4NC x 2-1/4"	2
3	Z516423	Straight, MJIC x MORB 1008	2

Item	Part number	Description	Quantity
4	Z516510	Elbow 90, MJIC x MORB 1008	2
5	Z72962	Rivet Nut, 1/4NC x 260	2
6	Z56223-M	Single Spool Valve	1



# Hydraulic Circuit

See [Valve Assembly](#)



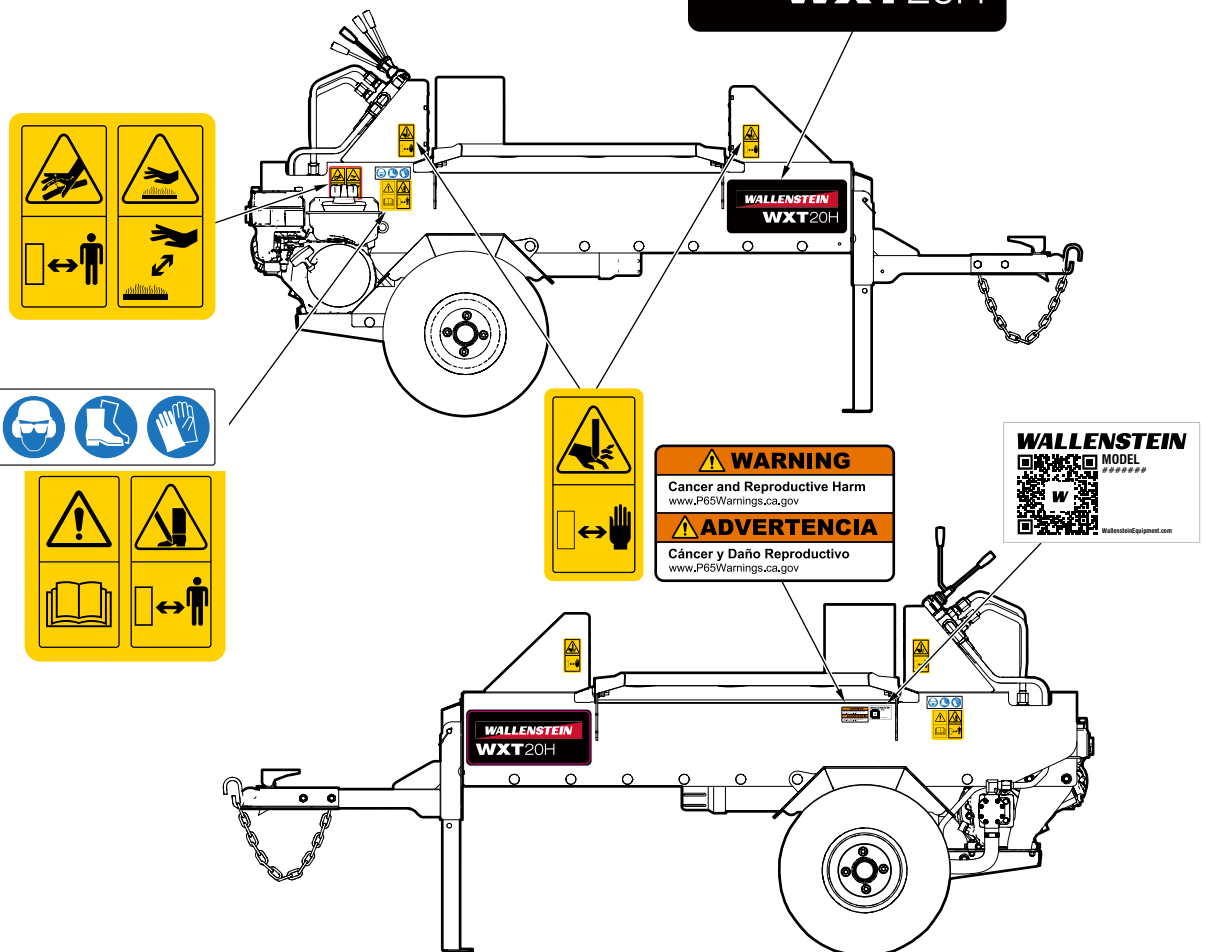
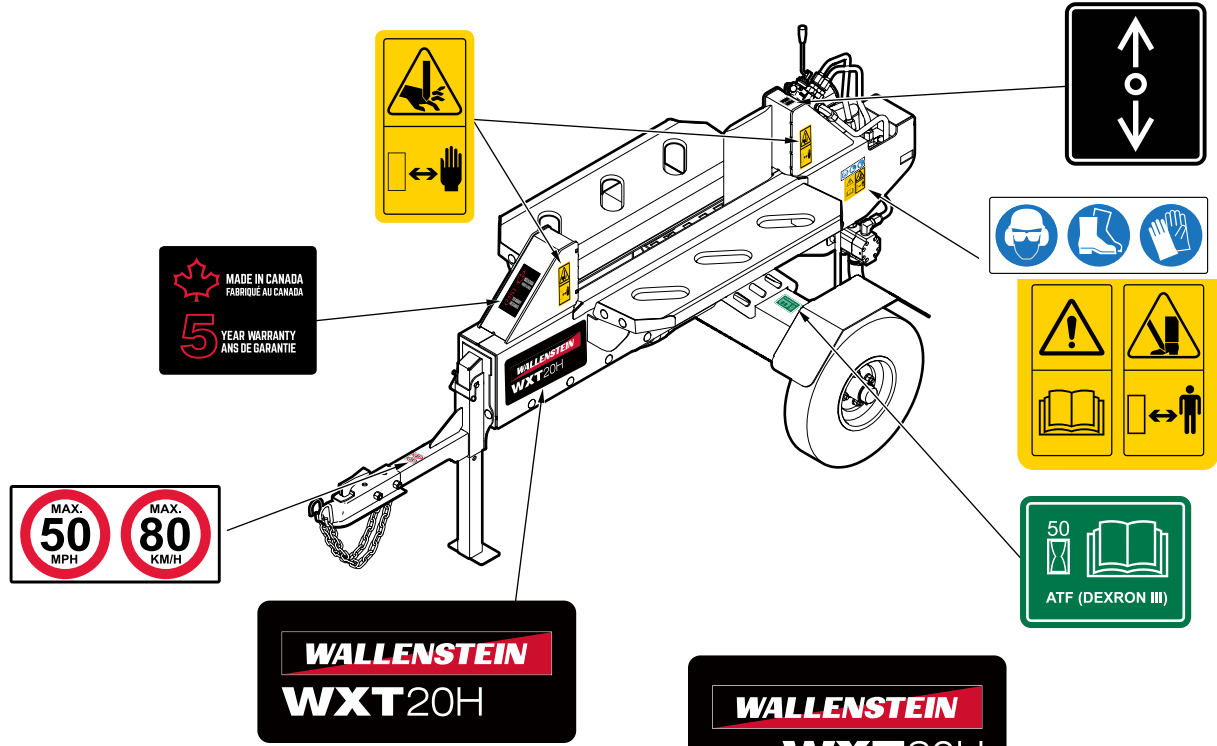
Item	Part number	Description	Quantity
1	Z516423	Straight, MJIC x MORB 1008	2
2	2074F103	5/8" Tube, FJIC10 x FJIC10	1
3	2074F101	5/8" Tube, FJIC10 x FJIC10	1
4	2074F105	5/8" Tube, FJIC10 x FJIC10	1

Item	Part number	Description	Quantity
5	Z516510	Elbow 90, MJIC x MORB 1008	2
6	2074F104	5/8" Tube, FJIC10 x FJIC10	1
7	2074F106	Suction Hose, 1" x 17"	1
8	Z79401	Hose Clamp, SAE 16 (1-1/2")	2

# Label Locations

**IMPORTANT! If you replace a part that has a safety label on it, you must apply a new safety label. Immediately replace safety labels that are damaged, have been removed, or are illegible.**

Contact your local Wallenstein Equipment dealer or distributor to order a safety label kit. Labels are not sold individually.



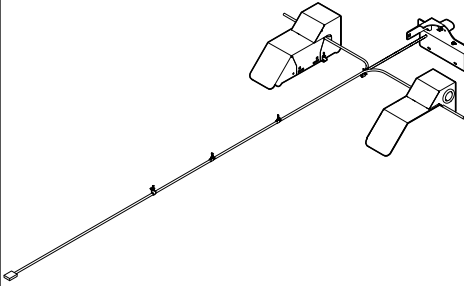
## Accessories

For price and availability, contact your local Wallenstein dealer or distributor.

For accessory installation instructions, go to [WallensteinEquipment.com/Support.aspx](http://WallensteinEquipment.com/Support.aspx), and then select **Accessories**.

### Light Kit W4300

The light kit (including fenders) enhances visibility and safety while towing.



## Bolt Torque

**IMPORTANT!** If you replace hardware, use fasteners of the same grade.

**IMPORTANT!** The torque specifications in these tables are for non-greased or non-oiled threads. Do not grease or oil fastener threads unless otherwise indicated. When using a thread lock, increase the specified torque 5%.



Bolt grades are identified by the marks on the bolt head.

The bolt torque specification tables provide the correct torque settings for common bolts and capscrews. Tighten all bolts to the torque that is specified in the table, unless otherwise indicated. Check the bolt tightness periodically.

### Imperial Bolt Torque Specifications

Bolt Diameter	Torque					
	SAE Gr. 2		SAE Gr. 5		SAE Gr. 8	
	lbf•ft	N•m	lbf•ft	N•m	lbf•ft	N•m
1/4 inch	6	8	9	12	12	17
5/16 inch	10	13	19	25	27	36
3/8 inch	20	27	33	45	45	63
7/16 inch	30	41	53	72	75	100
1/2 inch	45	61	80	110	115	155
9/16 inch	60	95	115	155	165	220
5/8 inch	95	128	160	215	220	305
3/4 inch	165	225	290	390	400	540
7/8 inch	170	230	420	570	650	880



SAE Gr. 2



SAE Gr. 5



SAE Gr. 8

### Metric Bolt Torque Specifications

Bolt Diameter	Torque			
	Gr. 8.8		Gr. 10.9	
	lbf•ft	N•m	lbf•ft	N•m
M3	0.4	0.5	1.3	1.8
M4	2.2	3	3.3	4.5
M6	7	10	11	15
M8	18	25	26	35
M10	37	50	52	70
M12	66	90	92	125
M14	83	112	116	158
M16	166	225	229	310
M20	321	435	450	610
M30	1,103	1,495	1,550	2,100



8.8



10.9

## Hydraulic Fitting Torque

Tighten flare-type tube fittings:

1. Check the flare and flare seat for defects that might cause leaks.
2. Align the tube with the fitting before tightening.
3. Hand-tighten the swivel nut until it is snug.
4. To prevent the tube from twisting, use two wrenches. Place one wrench on the connector body and tighten the swivel nut with the second wrench. Torque the fitting to the correct specification.

If a torque wrench is not available, use the flats from finger tight (FFFT) method.

Hydraulic Fitting Torque Specifications					
Tube size OD	Hex size across flats	Torque		Flats from finger tight	
		lbf•ft	N•m	Flats	Turns
3/16	7/16	6	8	2	1/6
1/4	9/16	11–12	15–17	2	1/6
5/16	5/8	14–16	19–22	2	1/6
3/8	11/16	20–22	27–30	1-1/4	1/6
1/2	7/8	44–48	59–65	1	1/6
5/8	1	50–58	68–79	1	1/6
3/4	1-1/4	79–88	107–119	1	1/8
1	1-5/8	117–125	158–170	1	1/8

Specifications are for non-lubricated connections.

## Lug Nut Torque



### WARNING!

**Wheel lug nuts must be installed and kept at the correct torque to prevent loose wheels, broken studs, or possible separation of a wheel from the axle.**

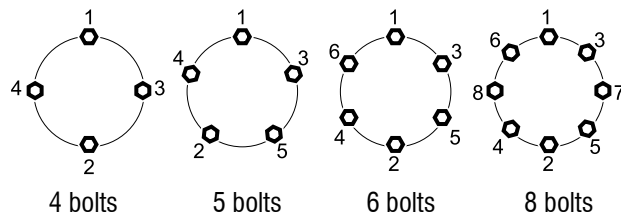
It is an extremely important safety procedure to apply and maintain the correct torque on lug nuts that secure the wheel to the trailer axle. A calibrated torque wrench is the best tool to make sure that the correct amount of torque is applied to a fastener.

Tighten wheel lug nuts to the correct torque before the first use and after each wheel removal. After a wheel is installed, check and torque the lug nuts after the first 10 miles (16 km), 25 miles (40 km), and 50 miles (80 km). Check the lug nut torque periodically thereafter.

- Start all lug nuts onto the threads by hand.
- Tighten lug nuts in stages, following the pattern shown below the Lug Nut Torque Specifications table.

Lug Nut Torque Specifications				
Wheel size	Units	First stage	Second stage	Third stage
8 inch	lbf•ft	12–20	30–35	45–55
	N•m	16–26	39–45.5	58.5–71.5
12 inch	lbf•ft	20–25	35–40	50–60
	N•m	26–32.5	45.5–52	65–78
13 inch	lbf•ft	20–25	35–40	50–60
	N•m	26–32.5	45.5–52	65–78
14 inch	lbf•ft	20–25	50–60	90–120
	N•m	26–32.5	65–78	117–156
15 inch	lbf•ft	20–25	50–60	90–120
	N•m	26–32.5	65–78	117–156
16 inch	lbf•ft	20–25	50–60	90–120
	N•m	26–32.5	65–78	117–156

Lug nut torque pattern:





**MAKING WORK FEEL MORE LIKE PLAY™**

[WallensteinEquipment.com](http://WallensteinEquipment.com)

