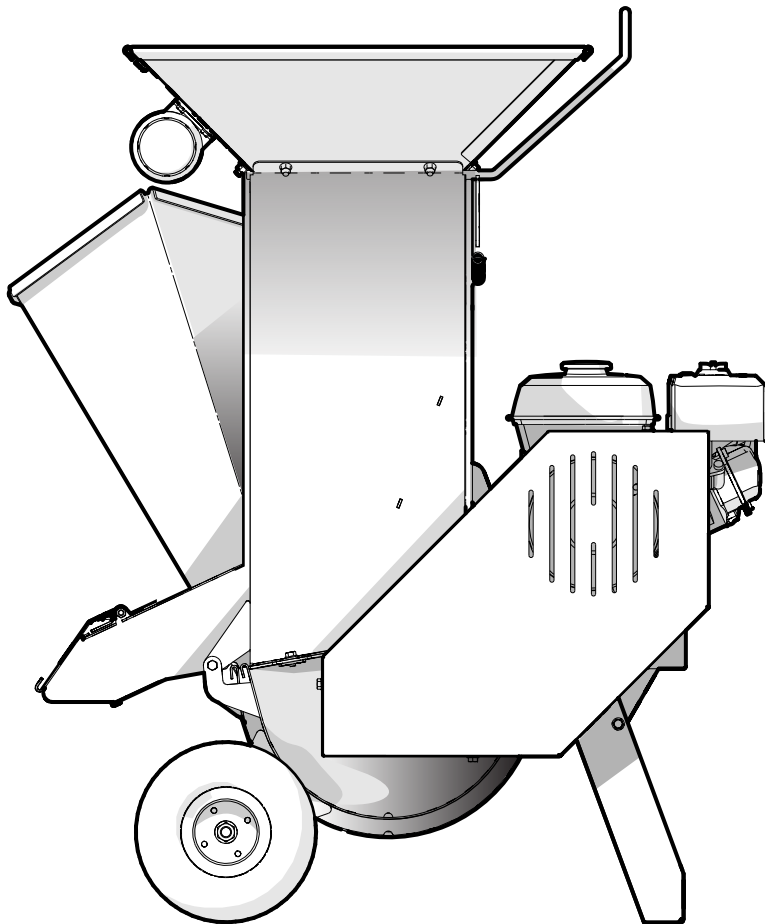


PARTS MANUAL

Serial Number 1MC34B1 & up

BXMC34BEU **CART CHIPPER / SHREDDER**



CE

Foreword

This Wallenstein parts manual is prepared to assist customers in ordering quality OEM replacement parts.

Regular maintenance combined with replacing old, worn or broken parts with the correct OEM parts is essential in prolonging the life of your Wallenstein product. Refer to this manual to identify replacement parts.

To order parts, contact your Wallenstein dealer or distributor. Have the product model and serial number handy.

If your dealer is no longer available, please go to our website: <http://wallensteinequipment.com> and click on the [Dealer Locator](#) to find the nearest dealer.

All information contained in this parts manual is current as per the revision date at the bottom of the page. Wallenstein reserves the right to change product specifications at any time without notice.

If your product specifications differ from those contained in this manual, contact Wallenstein for current information.

Reproduction of information in this parts manual is prohibited without prior written permission from Wallenstein Equipment Inc.

Wallenstein Equipment Inc. • © 2019

WARNING!

Refer to the operators manual for safe operation and maintenance.

Maintenance should be performed by trained personnel only.

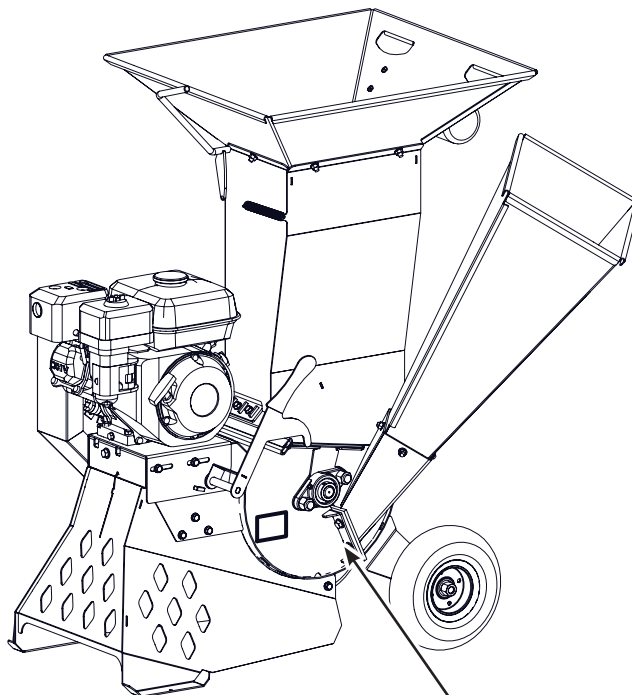
Serial Number Location

Always provide the model and serial number of your Wallenstein product when ordering parts or requesting service or other information. This information is found on the product information plate as shown below.

Record your product information here for future reference.

Model _____

Serial Number _____



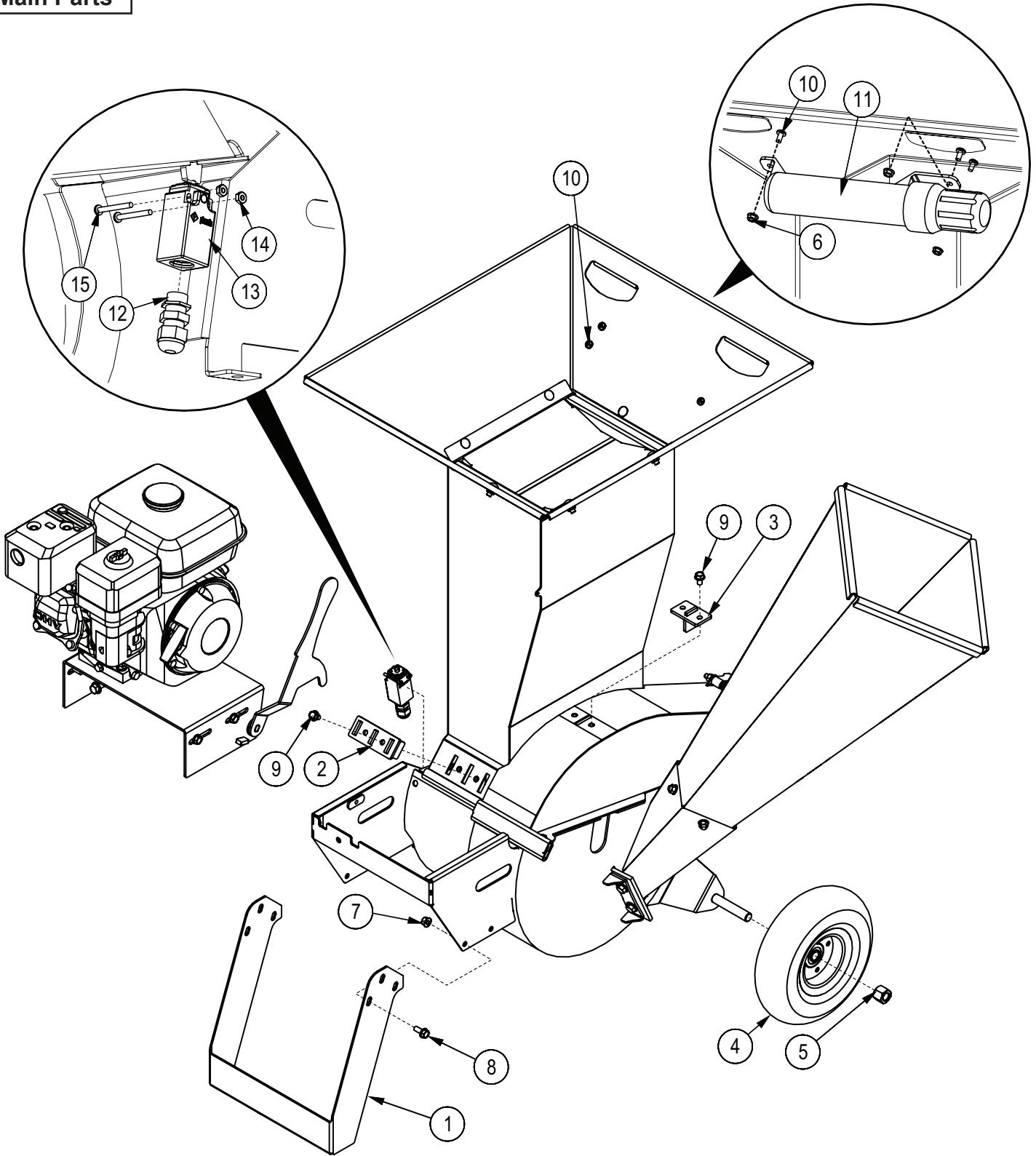
Model and Serial Number Location

www.wallensteinequipment.com

Contents

Main Parts	4
Upper \ Bottom Rotor Housing	5
Deflector Detail	6
Engine and Driveline	7
Rotor Assembly	8
Flapper Assembly	9
Decal Layout	10
Accessories	12
Common Bolt Torque Values	13

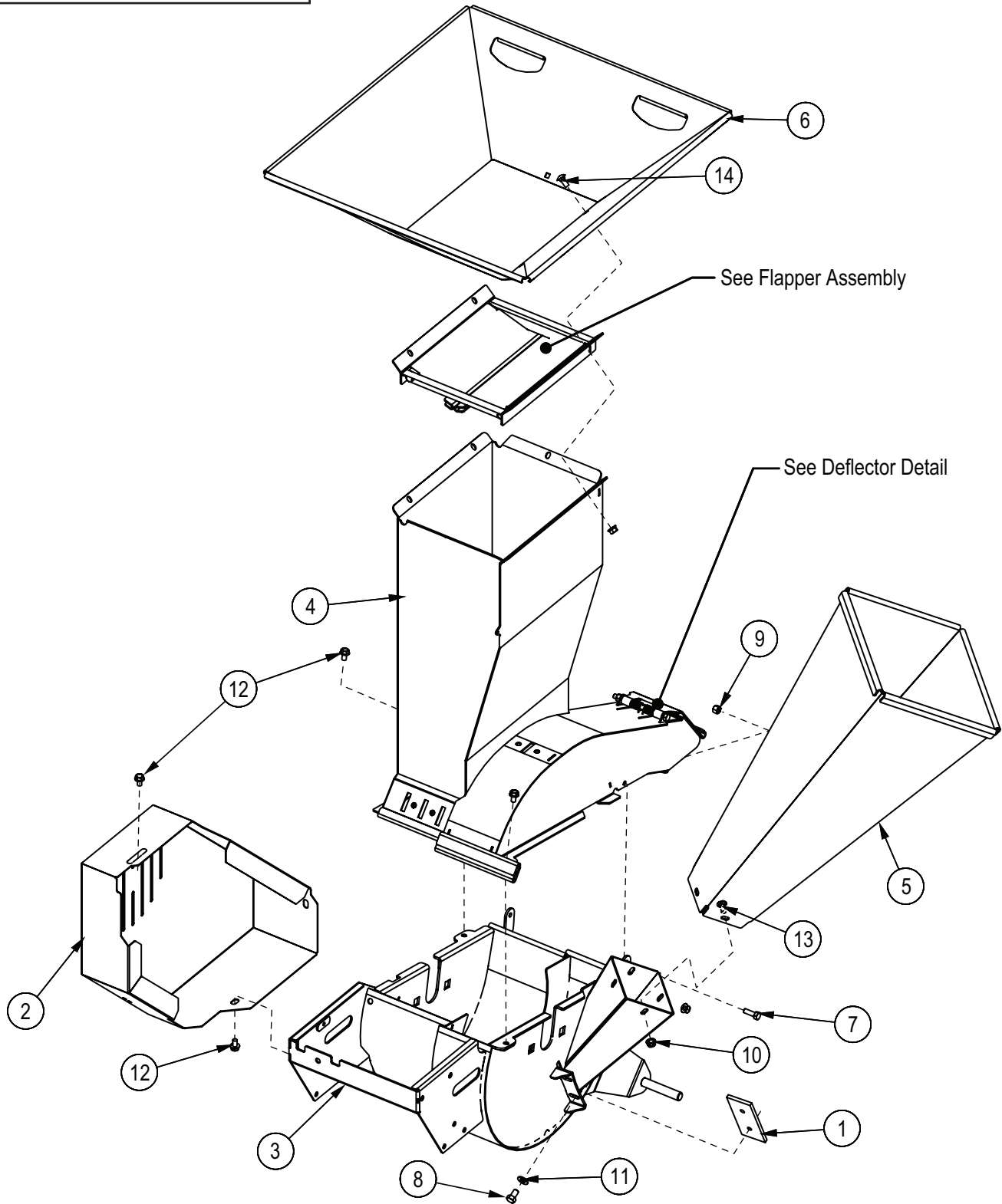
Main Parts



BOM ID	Part No.	Description	Qty
1	1073L239	Front Leg	1
2	1073W125	Chop Block	1
3	1073W126	Twig Breaker	1
4	Z91307	4.10-3.50-4NHS LRB 300lbs x 5/8"	2
5	Z72261	Hex Lock Nut, 5/8NC	2
6	Z72511	Serrated Flange Locknut, 1/4NC	3
7	Z72521	Serrated Flange Locknut, 5/16NC	6
8	Z76121	Flange Bolt, 5/16NC x 3/4"	6

BOM ID	Part No.	Description	Qty
9	Z76122	Flange Bolt, 5/16NC x 1/2"	4
10	Z78317	Machine Screw, 1/4NC x 1/2"	3
11	Z96503	Manual Tube, 3-1/2" Short	1
12	Z62820	Straight Fitting, 3/8" Wire	1
13	Z66109	Limit Switch, Pizzato FR501	1
14	Z72741	Machine Nut, #8NC	2
15	Z78313	Machine Screw, #8NC x 1-1/2"	2

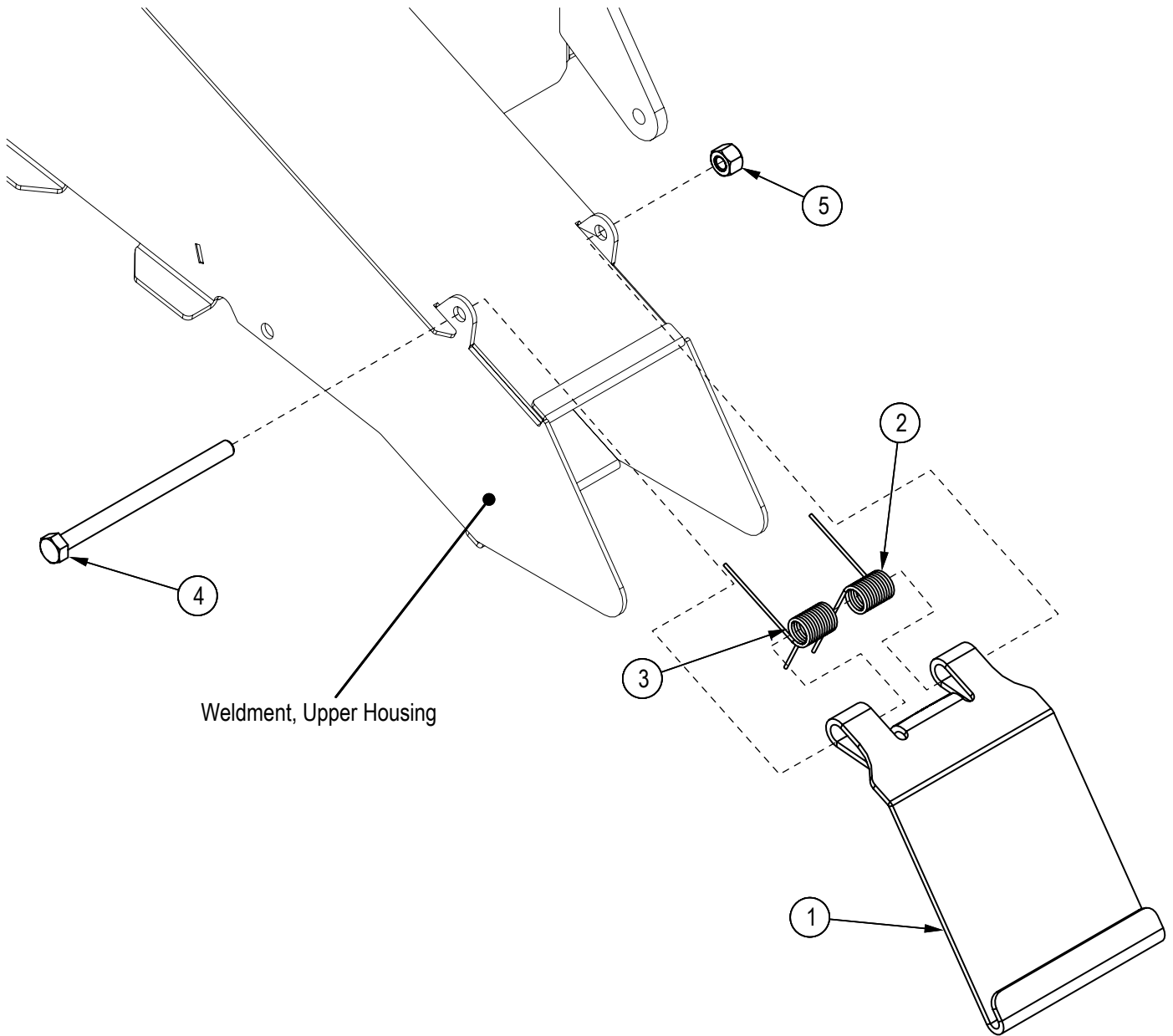
Upper \ Bottom Rotor Housing



BOM ID	Part No.	Description	Qty
1	1056M304	Knife, 3" Ledger	1
2	1073L233	Belt Shield	1
3	1073W102	Housing, Bottom	1
4	1073W104	Housing, Upper	1
5	1073W112	Extension	1
6	1073W129	Hopper	1
7	Z71210	Hex Bolt, 5/16NC x 1"	2

BOM ID	Part No.	Description	Qty
8	Z71372G8	Hex Bolt, 3/8NF x 5/8" G8	2
9	Z72221	Hex Lock Nut, 5/16NC	2
10	Z72521	Serrated Flange Locknut, 5/16NC	10
11	Z73131	SAE Washer, 3/8"	2
12	Z76122	Flange Bolt, 5/16NC x 1/2"	5
13	Z76221	Carriage Bolt, 5/16NC x 3/4"	10

Deflector Detail

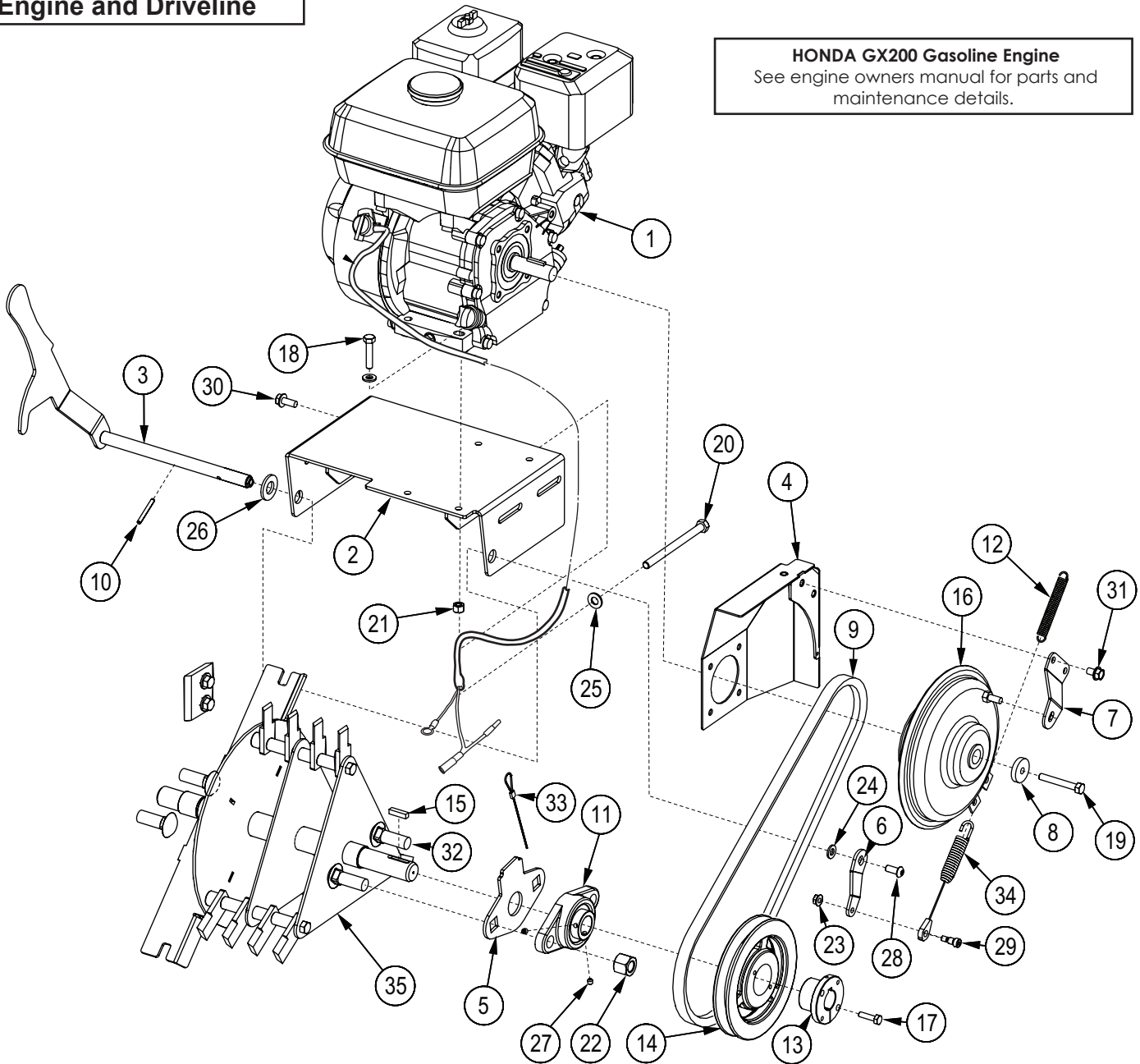


Weldment, Upper Housing

BOM ID	Part Number	Description	Qty
1	1073L242	Deflector	1
2	Z33201	Tor Spring, 0.585" OD x 0.850" x 0.063" - RH	1
3	Z33202	Tor Spring, 0.585" OD x 0.850" x 0.063" - LH	1
4	Z71245	Hex Bolt, 5/16NC x 4-1/2"	1
5	Z72221	Hex Lock Nut, 5/16NC	1

Engine and Driveline

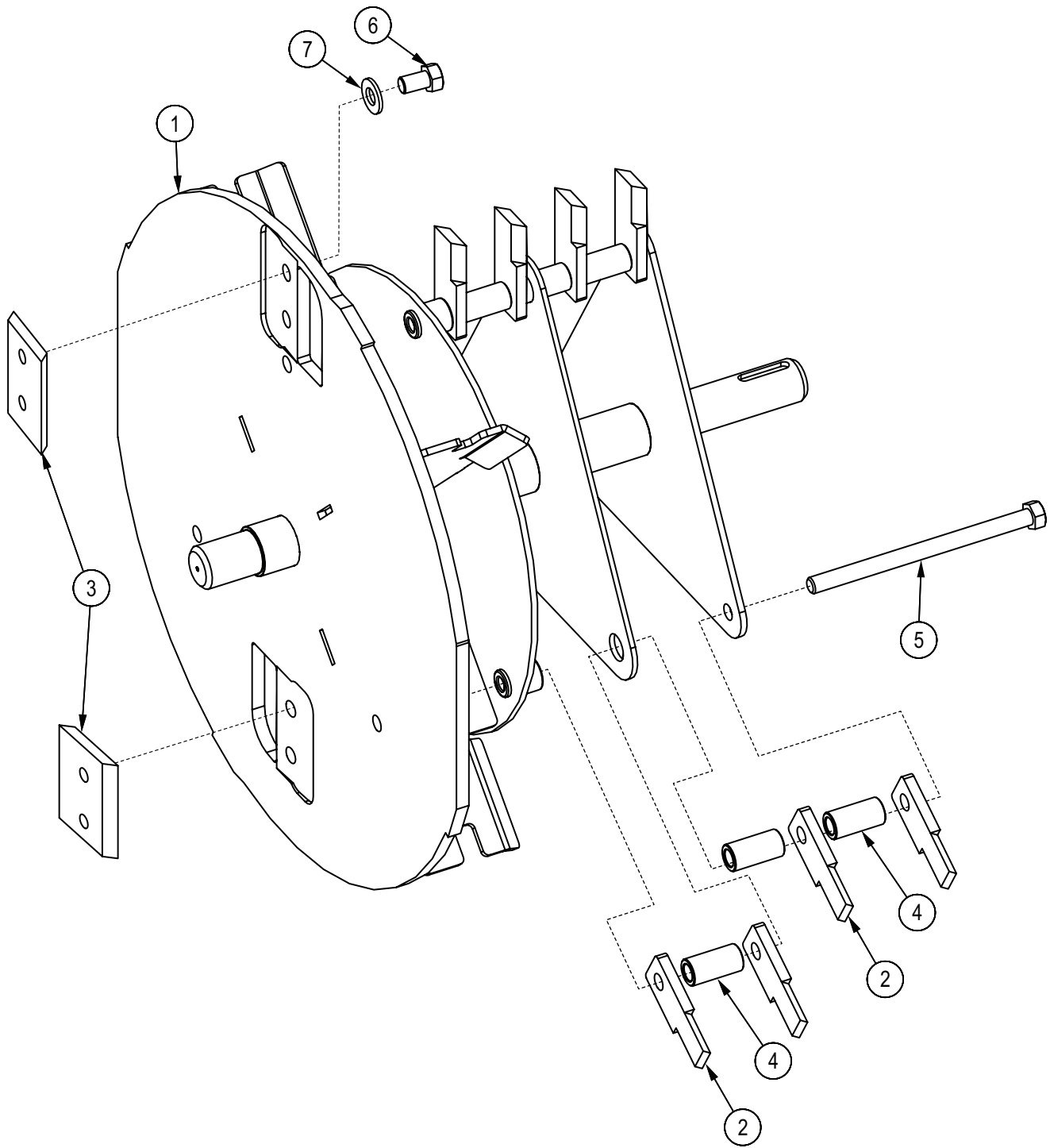
HONDA GX200 Gasoline Engine
See engine owners manual for parts and maintenance details.



BOM ID	Part No.	Description	Qty
1	Z47131	Honda GX200UTQH6, Rope	1
2	1073W127	Engine Base	1
3	1073W130	Clutch Actuator	1
4	1073W124	Shield Mount	1
5	1073L266	Bearing Cover Plate	2
6	1073L268	Clutch Actuator Foot	1
7	1073L270	Clutch Keep	1
8	1073L255	Trap Washer	1
9	Z41161	Single Belt, B42	1
10	Z14151	Roll Pin, 3/16" x 1-1/2"	1
11	Z25101	2-Bolt Flange Bearing, UCFL205-16	2
12	Z31304	Ext Spring, 1/2" OD x 2-1/2" x .063"	1
13	Z41510	Hub, L x 1"	1
14	Z41609	Sheave, MBL62 x L	1
15	Z46533	Key, 1/4" x 1/4" x 1"	1
16	Z49301	Brake Clutch, 3.6" x 3/4"	1
17	Z71110	Hex Bolt, 1/4NC x 1"	2
18	Z71215	Hex Bolt, 5/16NC x 1-1/2"	4

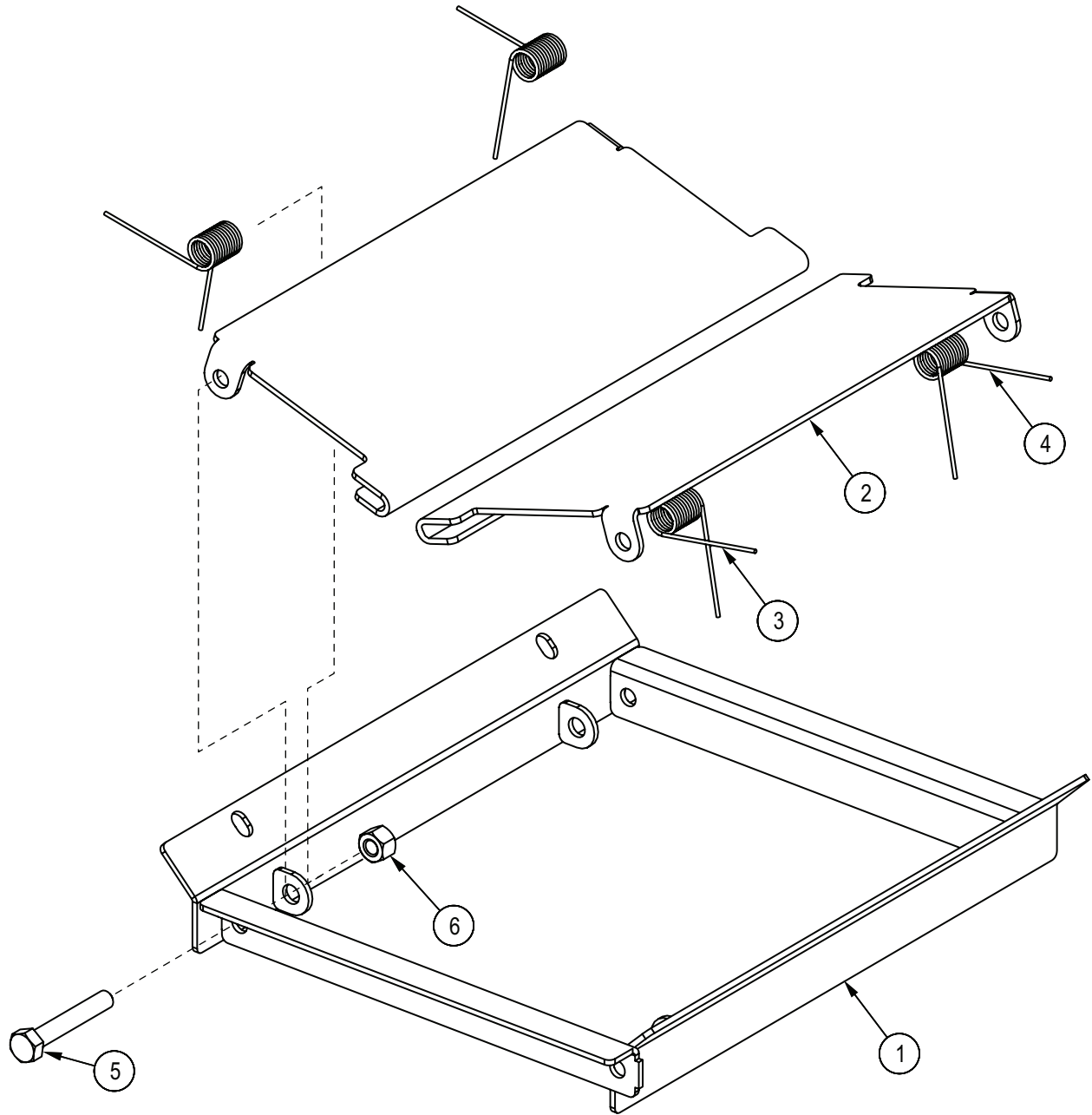
BOM ID	Part No.	Description	Qty
19	Z71277	Hex Bolt, 5/16NF x 2-1/4"	1
20	Z71390	Hex Bolt, 3/8NC x 5" Full Threads	1
21	Z72221	Hex Lock Nut, 5/16NC	4
22	Z72261	Hex Lock Nut, 5/8NC	4
23	Z72511	Serrated Flange Locknut, 1/4NC	1
24	Z73122	SAE Washer, 5/16"	5
25	Z73131	SAE Washer, 3/8"	1
26	Z73161	SAE Washer, 5/8"	2
27	Z74111	Set Screw, 1/4NC x 1/4"	4
28	Z75351	BHCS, 5/16NF x 3/4"	5
29	Z75523	Shoulder Bolt, 5/16" x 3/8"	1
30	Z76121	Flange Bolt, 5/16NC x 3/4"	4
31	Z76122	Flange Bolt, 5/16NC x 1/2"	2
32	Z76262	Carriage Bolt, 5/8NC x 1-3/4"	4
33	Z92110	Aircraft Cable, 1/16" x 24"	1
34	Z92117	Clutch Actuator Cable with Spring and 5/16" Eye	1
35	1073A101	Assembly, Rotor	1

Rotor Assembly



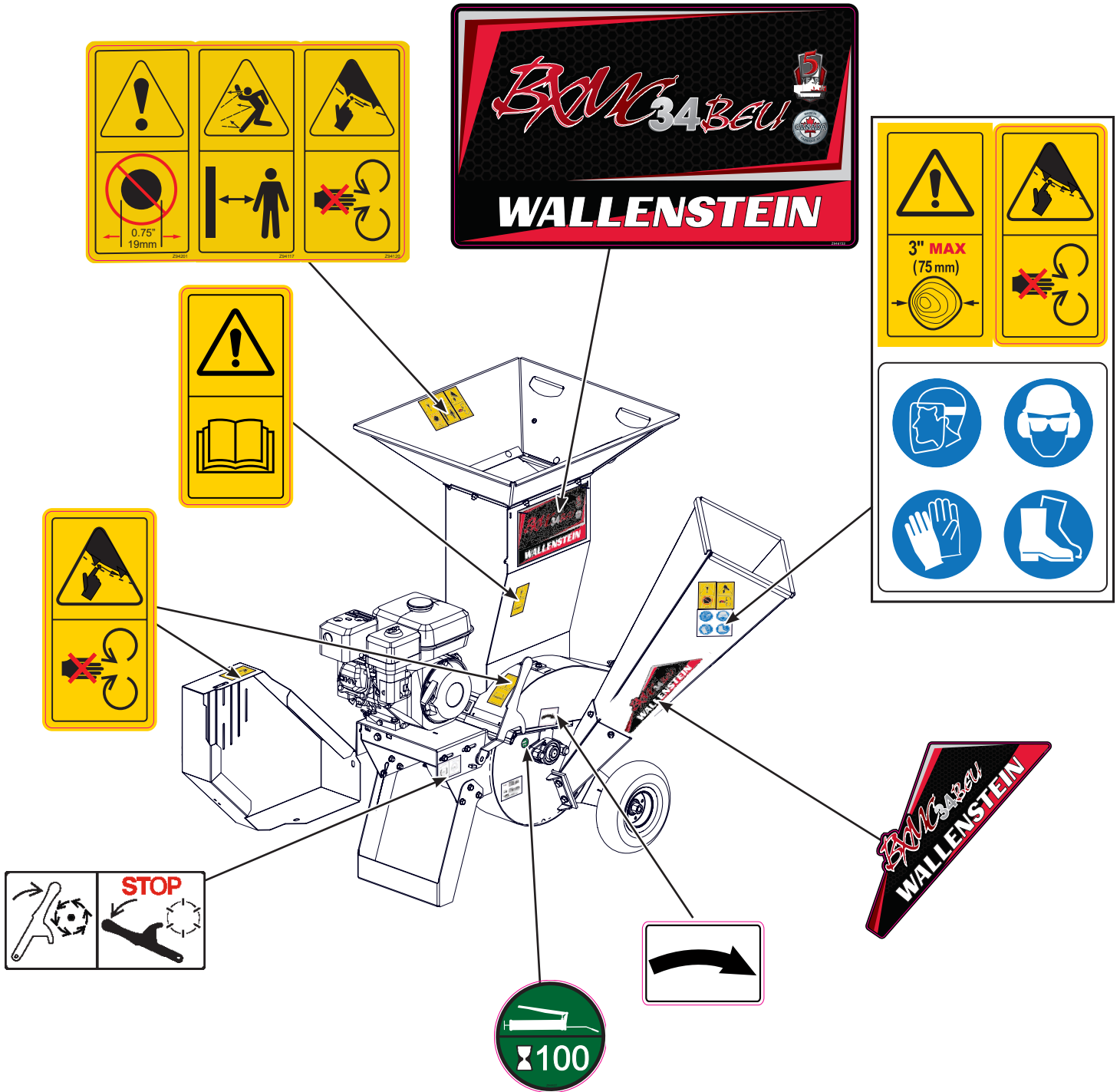
BOM ID	Part No.	Description	Qty
1	1073W103	Rotor	1
2	1056M108	Knife,Shredder	12
3	1056M303	Knife, 3" Rotor	2
4	1073M104	Spacer, Shredder 1.25	9
5	Z71355G8	Hex Bolt, 3/8NC x 5-1/2" G8	3
6	Z71372G8	Hex Bolt, 3/8NF x 5/8" G8	4
7	Z73131	SAE Washer, 3/8"	4

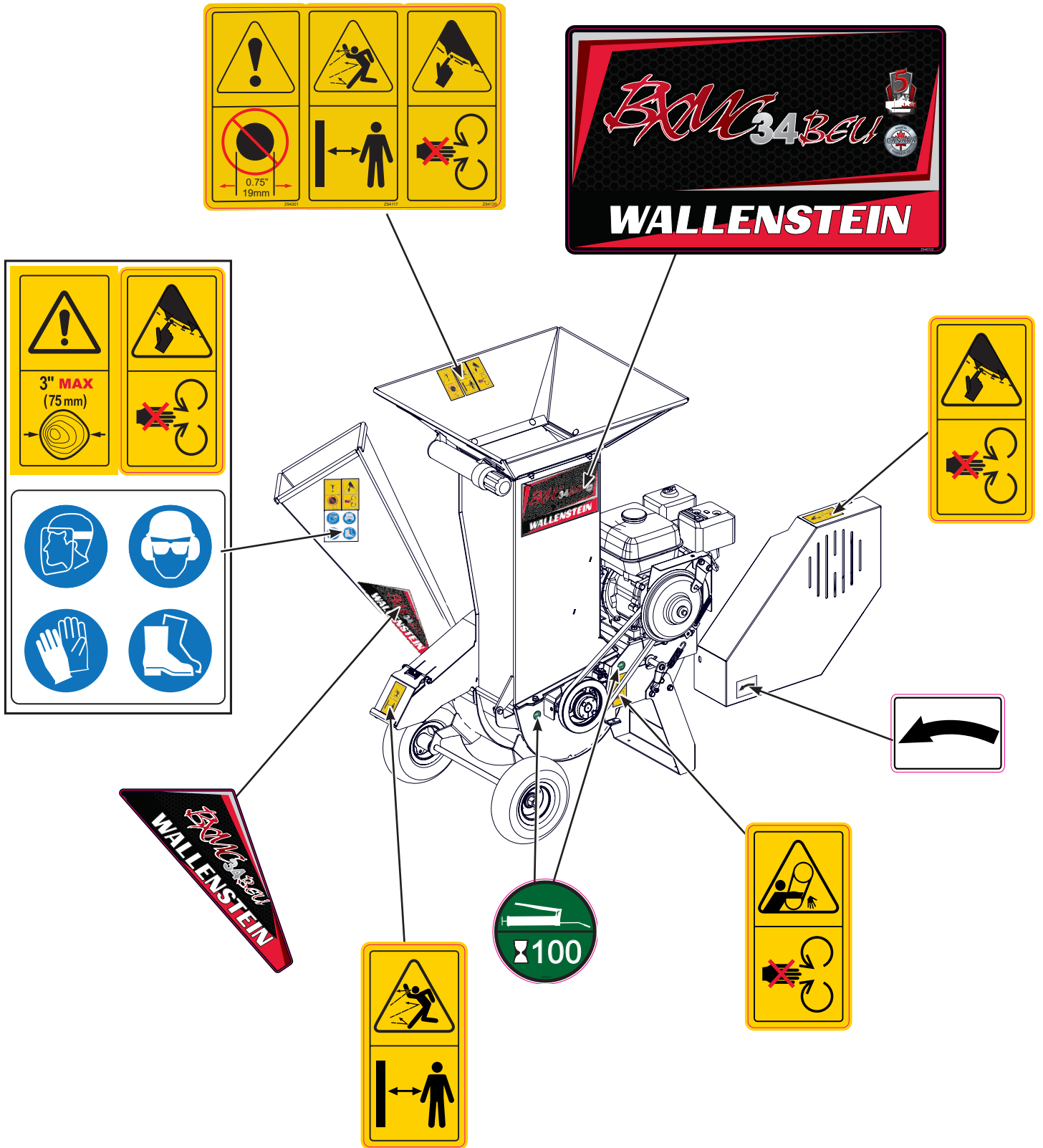
Flapper Assembly



BOM ID	Part No.	Description	Qty
1	1082W358	CE BXMC32EU Frame	1
2	1082L368	CE BXMC32EU Flap	2
3	Z33201	Tor Spring, 0.585" OD x 0.850" x 0.063" - RH	2
4	Z33202	Tor Spring, 0.585" OD x 0.850" x 0.063" - LH	2
5	Z71220	Hex Bolt, 5/16NC x 2"	4
6	Z72221	Hex Lock Nut, 5/16NC	4

Decal Layout



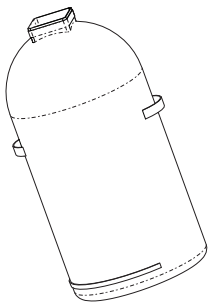


Accessories

Call your dealer for pricing and availability

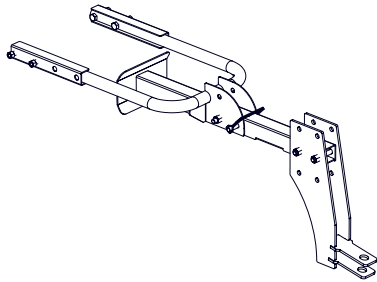
**Ledger Clearance Setting Gauge****P/N 1012L269**

An easy and accurate way of setting the critical clearances between the ledger blade and the rotor chipper blade.

**Mulch Collector Bag****P/N 1082S352**

An easy way to collect your mulch and distribute it where its needed.

The mulch bag holds 2.7 ft³ (28 L) and is a mildew resistant synthetic material. It is a porous material, allowing air from the rotor to pass through without restricting collection of the chips.

**Garden Tractor Hitch.****P/N 1082A355**

Allows for hauling your chipper with your garden tractor, convenient when working around the yard, a must for larger properties.

Easy to install, bolt on to your chipper and you're ready to go!


Common Bolt Torque Values

Checking Bolt Torque

The tables shown give correct torque values for various bolts and capscrews. Tighten all bolts to the torque values specified in the table, unless indicated otherwise. Check tightness of bolts periodically.

IMPORTANT! If replacing hardware, use fasteners of the same grade.

IMPORTANT! Torque figures indicated in the table are for non-greased or non-oiled threads. Do not grease or oil threads unless indicated otherwise. When using a thread locker, increase torque values by 5%.

 **NOTE:** Bolt grades are identified by their head markings.

Imperial Bolt Torque Specifications						
Bolt Diameter	Torque Value					
	SAE Gr. 2		SAE Gr. 5		SAE Gr. 8	
	lbf•ft	N•m	lbf•ft	N•m	lbf•ft	N•m
1/4"	6	8	9	12	12	17
5/16"	10	13	19	25	27	36
3/8"	20	27	33	45	45	63
7/16"	30	41	53	72	75	100
1/2"	45	61	80	110	115	155
9/16"	60	95	115	155	165	220
5/8"	95	128	160	215	220	305
3/4"	165	225	290	390	400	540
7/8"	170	230	420	570	650	880
1"	225	345	630	850	970	1320



Metric Bolt Torque Specifications				
Bolt Diameter	Torque Value			
	Gr. 8.8		Gr. 10.9	
	lbf•ft	N•m	lbf•ft	N•m
M3	0.4	0.5	1.3	1.8
M4	2.2	3	3.3	4.5
M6	7	10	11	15
M8	18	25	26	35
M10	37	50	52	70
M12	66	90	92	125
M14	83	112	116	158
M16	166	225	229	310
M20	321	435	450	610
M30	1,103	1 495	1,550	2 100

