

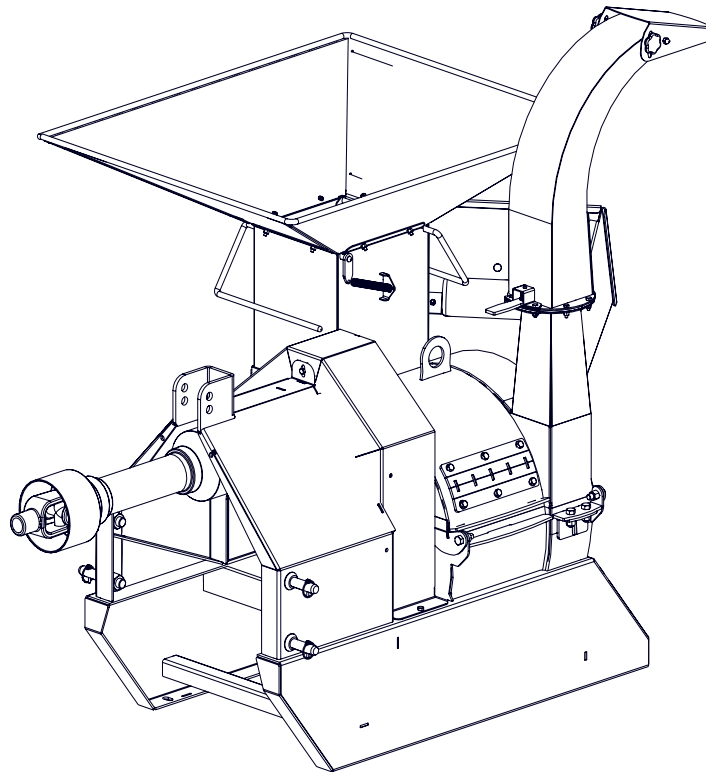


EMB Manufacturing Inc.
4144 Boomer Line · St. Clements, Ontario · N0B 2M0 · Canada
www.wallensteinequipment.com

PARTS MANUAL

BXM42 Chipper

Serial Number 1M42605 & up



Refer to the operators manual for safe
operation and maintenance

Contents

Main Parts4

Driveline5

Driveline - Continued6

Rotor Detail7

Discharge Chute Assembly8

Hopper Flap Detail.....8

PTO Shaft Assembly9

Label Layout10

Accessories11

Bolt Torque.....12

Hydraulic Fitting Torque13

 **WARNING!**

Refer to the operators manual for safe operation and maintenance.

Maintenance should be performed by trained personnel only.

Foreword

EMB Manufacturing has prepared this parts manual to assist customers in ordering quality OEM replacement parts.

Regular maintenance, and replacing old, worn or broken parts with the correct OEM parts, is essential in prolonging the life of your EMB product. Please refer to this manual to identify replacement parts.

To order parts, please contact your dealer for further information. If your dealer is no longer available please go to our website: <http://www.wallensteinequipment.com> and click on the [Dealer Locator](#) to find the nearest dealer.

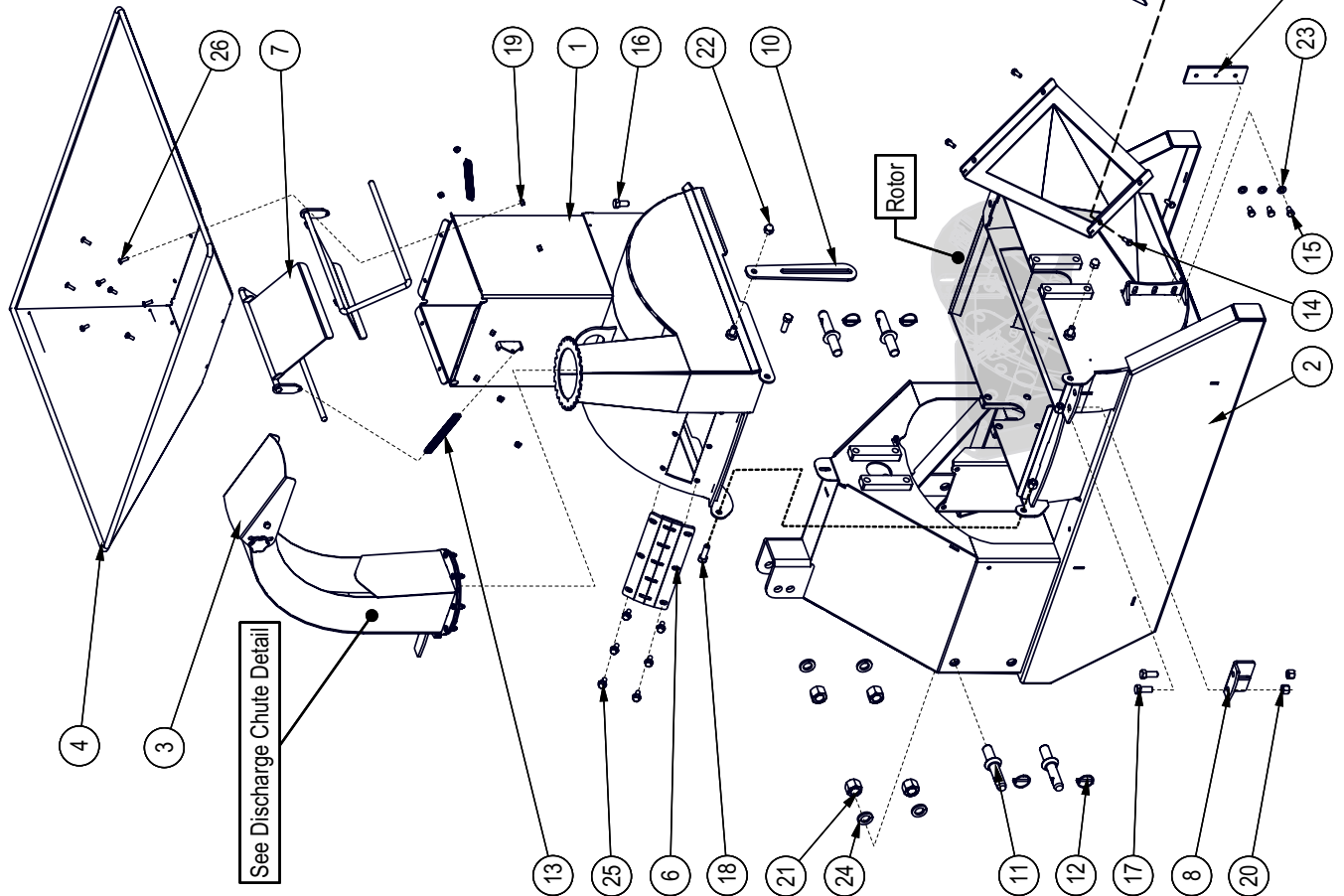
All information contained in this parts manual is current as per the revision date at the bottom of the page. EMB reserves the right to change product specifications at any time without notice.

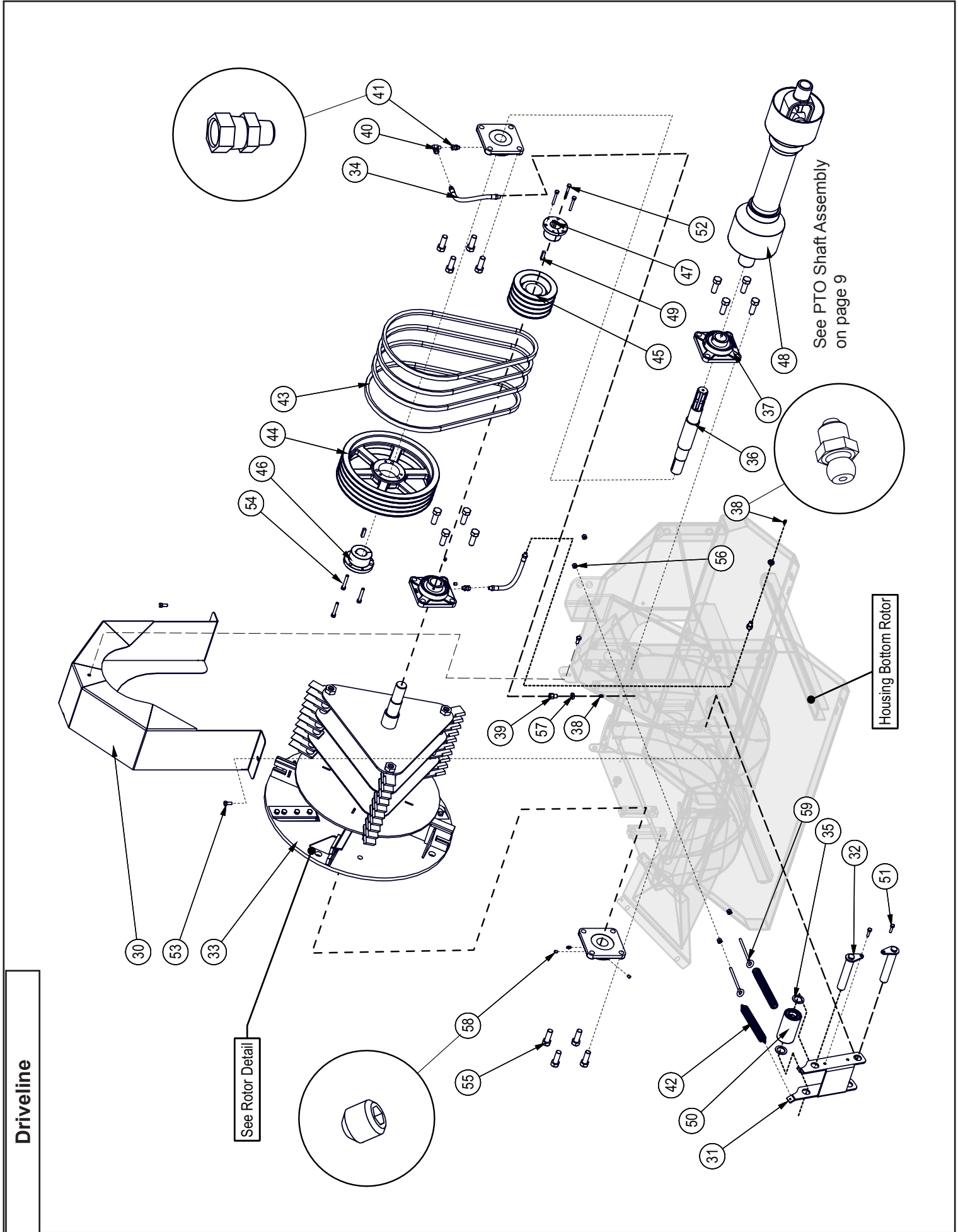
If your product specifications differ from those contained in this manual, contact EMB Manufacturing for information.

Reproduction of this parts manual of any kind is prohibited without prior written permission from EMB Manufacturing.

Main Parts

BOM ID	Part No.	Description	Qty
1	1016W602	Housing, Upper Rotor	1
2	1016W601	Housing, Bottom Rotor	1
3	1016A005	Assembly, Discharge Chute	1
4	1016W627	Hopper, Shredder	1
5	1016W632	Chipper Feed Hopper	1
6	1016W634	Chop Block	1
7	1016W625	Flapper	2
8	1011W104	Twig Breaker	1
9	1011M104	Knife, 4" Ledger	1
10	1016L729	Positive Stop Plate	1
11	Z11431	Implement Pin, 7/8" x 1-3/4" x 7/8NF	4
12	Z12110	Lynch Pin, 3/16"	4
13	Z31301	Ext Spring, 17mm OD x 140mm x 0.080"	2
14	Z11207	Hex Bolt, 5/16NC x 3/4"	4
15	Z11372G8	Hex Bolt, 3/8NF x 5/8" G8	3
16	Z11510	Hex Bolt, 1/2NC x 1"	1
17	Z11512	Hex Bolt, 1/2NC x 1-1/4"	2
18	Z11515	Hex Bolt, 1/2NC x 1-1/2"	2
19	Z12211	Hex Lock Nut, 1/4NC	11
20	Z12251	Hex Lock Nut, 1/2NC	4
21	Z12282	Hex Lock Nut, 7/8NF	4
22	Z12915	Acorn Nut, 1/2NC	2
23	Z13131	SAE Washer, 3/8"	3
24	Z13381	Split Lock Washer, 7/8"	4
25	Z16133	Flange Bolt, 3/8NC x 3/4"	6
26	Z18301	Machine Screw, 1/4NC x 3/4"	11
27	Z96503	Manual Tube, 3-1/2" Short	1



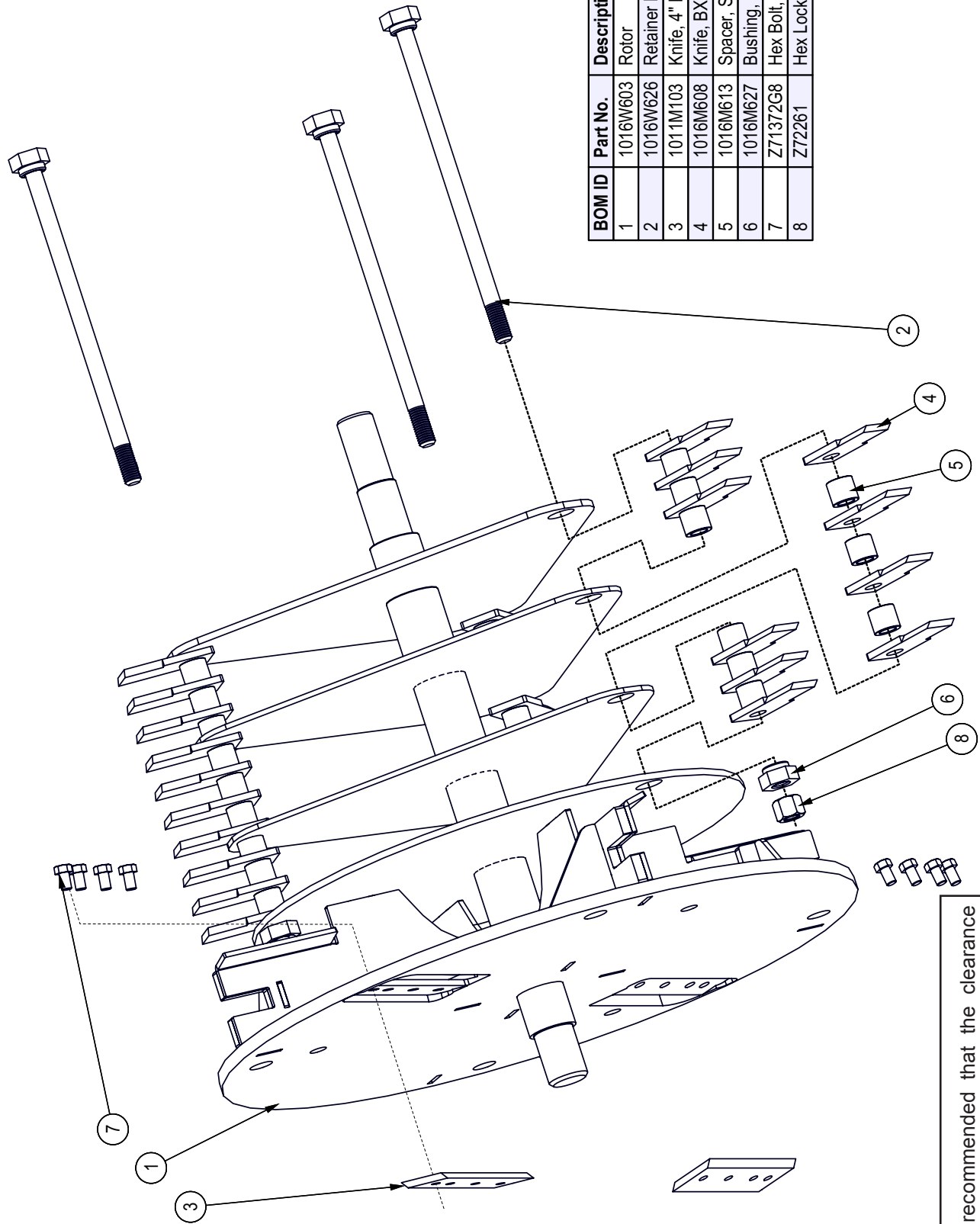


Driveline - Continued

BOM ID	Part No.	Description	Qty
46	Z41501	Hub, SK x 1-3/8"	1
47	Z41517	Hub, SD x 1-3/8"	1
48	Z44504	PTO Shaft, Series B5 x 30.748"	1
49	Z46544	Key, 5/16" x 5/16" x 1-1/4"	2
50	Z49101	Idler Assembly, 2-1/4" x 4" x 1"	1
51	Z71110	Hex Bolt, 1/4NC x 1"	2
52	Z71120	Hex Bolt, 1/4NC x 2"	3
53	Z71207	Hex Bolt, 5/16NC x 3/4"	3
54	Z71220	Hex Bolt, 5/16NC x 2"	3
55	Z71672G8	Hex Bolt, 5/8NF x 1-3/4" G8	16
56	Z72221	Hex Lock Nut, 5/16NC	4
57	Z72341	Jam Nut, 7/16NC	2
58	Z74121	Set Screw, 5/16NC x 3/8"	4
59	Z76521	Eye Bolt, 5/16NC x 4"	2

BOM ID	Part No.	Description	Qty
30	1016W631	Belt Shield	1
31	1016W633	Idler Arm, Main Belt Tightner	1
32	1016W612	Belt Tightner, Main Pivot Pin	2
33	1016W603	Rotor	1
34	1016F001	1/4" Grease Whip, MP02 x MP02 x 9"	2
35	1016L972	Washer, Idler	2
36	1016M621	Shaft, Splined	1
37	Z25204	4-Bolt Flange Bearing, UCF208-24	4
38	Z29202	Grease Fitting, 1/4NF	3
39	Z29206	Bulkhead, FP x FP 0402 x 7/16NC	2
40	Z29307	Elbow 90 Grease Fitting, MP x FPX 0202	1
41	Z29311	Grease Fitting, MP x FPX 0202	2
42	Z31404	Ext Spring, 25mm OD x 178mm x 0.135"	2
43	Z41158	Single Belt, B50	4
44	Z41311	Sheave, 4B124 x SK	1
45	Z41312	Sheave, 4B54 x SD	1

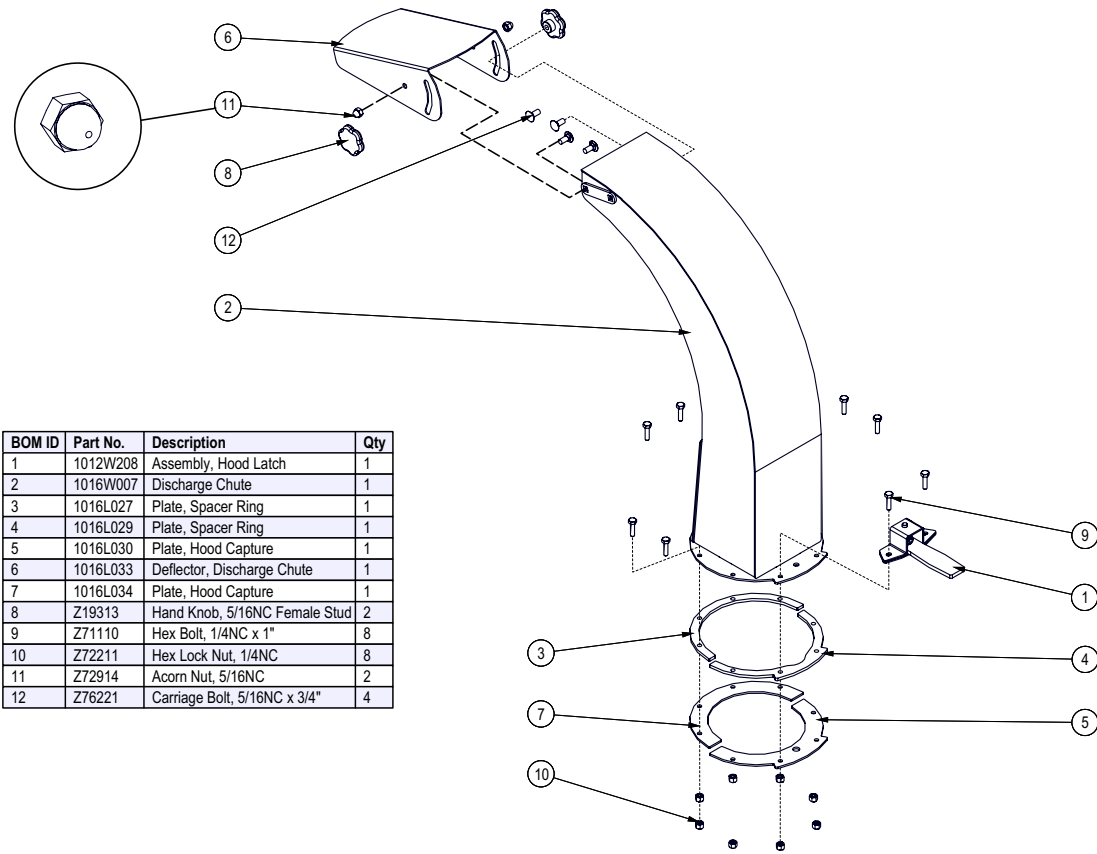
Rotor Detail



BOM ID	Part No.	Description	Qty
1	1016W603	Rotor	1
2	1016W626	Retainer Pin	3
3	1011M103	Knife, 4" Rotor	2
4	1016M608	Knife, BXM Shredder	30
5	1016M613	Spacer, Shredder	27
6	1016M627	Bushing, Retainer Rod	3
7	Z71372G8	Hex Bolt, 3/8NF x 5/8" G8	8
8	Z72261	Hex Lock Nut, 5/8NC	3

It is recommended that the clearance between the rotor and stationary blades be set and maintained at 1/32 to 1/16" (.76 - 1.52 mm) to obtain the best performance.

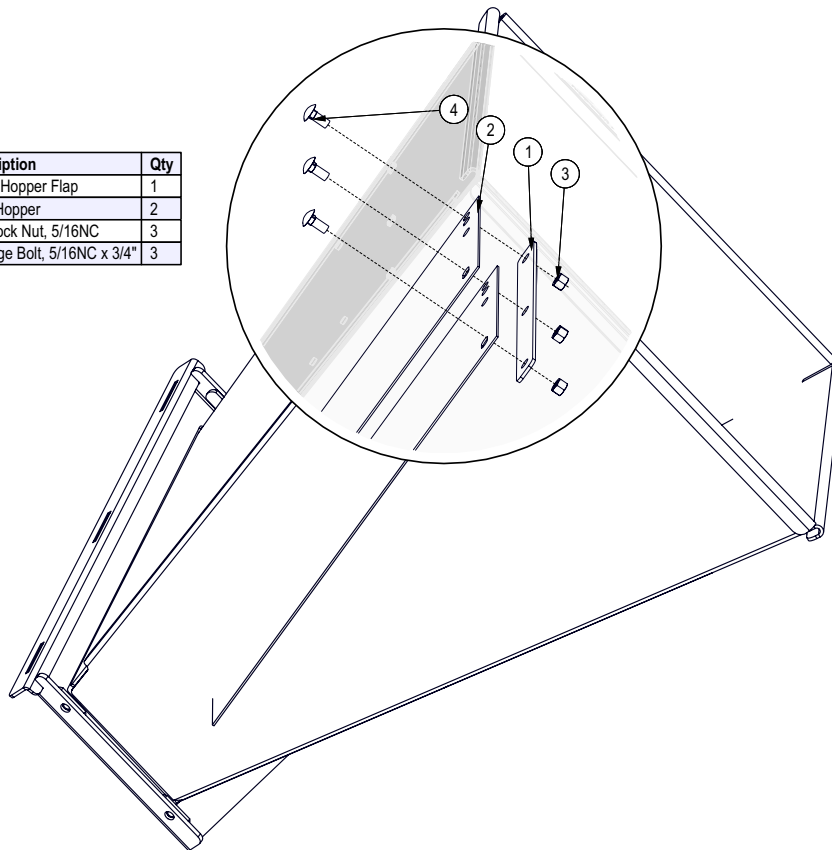
Discharge Chute Assembly



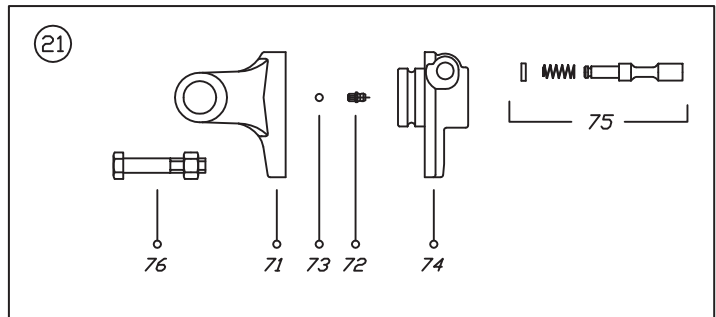
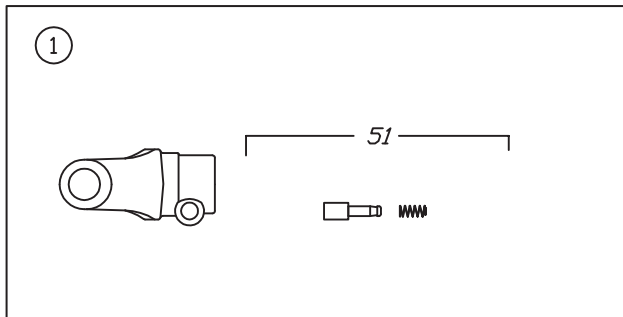
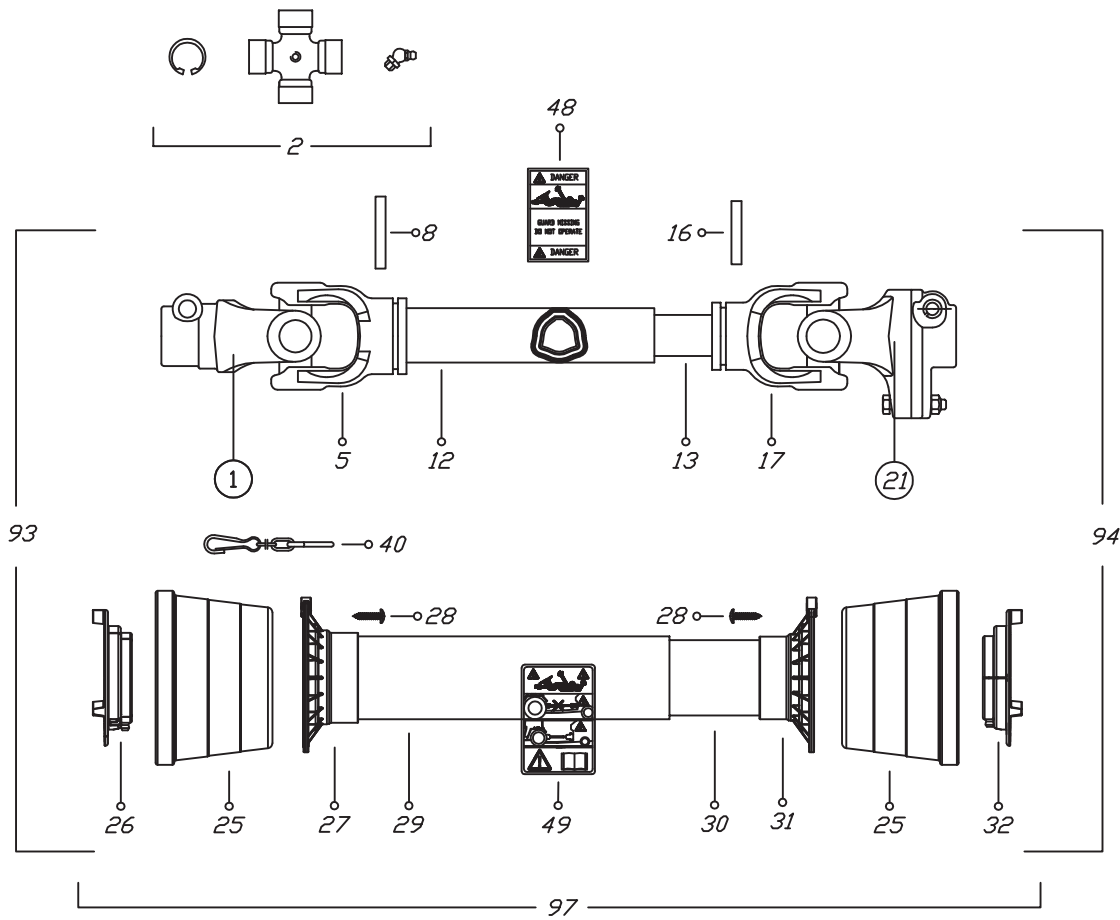
BOM ID	Part No.	Description	Qty
1	1012W208	Assembly, Hood Latch	1
2	1016W007	Discharge Chute	1
3	1016L027	Plate, Spacer Ring	1
4	1016L029	Plate, Spacer Ring	1
5	1016L030	Plate, Hood Capture	1
6	1016L033	Deflector, Discharge Chute	1
7	1016L034	Plate, Hood Capture	1
8	Z19313	Hand Knob, 5/16NC Female Stud	2
9	Z71110	Hex Bolt, 1/4NC x 1"	8
10	Z72211	Hex Lock Nut, 1/4NC	8
11	Z72914	Acorn Nut, 5/16NC	2
12	Z76221	Carriage Bolt, 5/16NC x 3/4"	4

Hopper Flap Detail

BOM ID	Part No.	Description	Qty
1	1011L151	Strap, Hopper Flap	1
2	1011S103	Flap, Hopper	2
3	Z72221	Hex Lock Nut, 5/16NC	3
4	Z76221	Carriage Bolt, 5/16NC x 3/4"	3



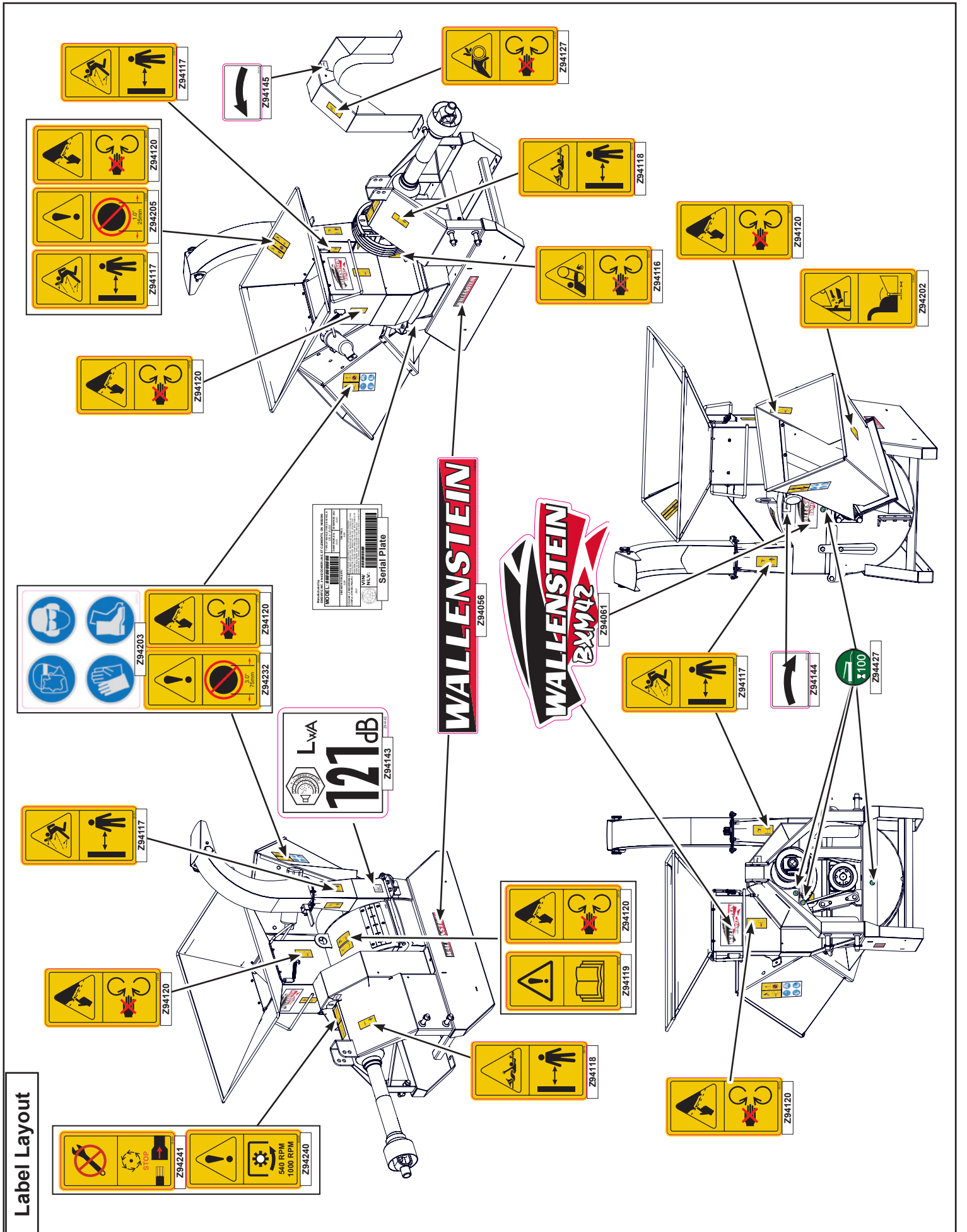
PTO Shaft Assembly



00112

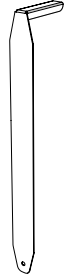
Binacchi SPARE PARTS LIST : B5D056US098001			
POS.	DESCRIPTION	Q.	Part #
01	YOKE	1	0800503
02	CROSS JOURNAL ASS.	2	08205
05	OUTER TUBE YOKE	1	08005021
08	FLEXIBLE PIN	1	098701075
12	CM. 100 CARDAN TUBE(*)	1	09881523100
13	CM. 100 CARDAN TUBE(*)	1	09881454100
16	FLEXIBLE PIN	1	0987001065
17	INNER TUBE YOKE	1	08005011
21	SHEAR BOLT YOKE	1	08805A604633
25	CONE SHIELD BELL 05-06	2	021906C001
26	OUTER BEARING 05	1	025505C001
27	OUTER BASE CONE 05-06	1	025406C001
28	SCREW	6	0998052242
29	OUTER SAFETY TUBE	1	0988981NB5056
30	INNER SAFETY TUBE	1	0988975NB5056

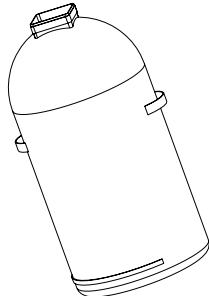
Binacchi SPARE PARTS LIST : B5D056US098001			
POS.	DESCRIPTION	Q.	Part #
31	INNER BASE CONE 05-06	1	025406C002
32	INNER BEARING 05	1	025505C002
40	CHAIN	1	0252000001
48	LABEL DANGER OUTER DRIVE TUBE	1	09872006
49	EXTERNAL SHIELD LABEL	1	09872003
51	COMPLETE PUSH BUTTTON	1	0986014047
71	YOKE FOR LB5	1	08896905
72	GREASE NIPPLE	1	0984010150
73	STEEL BALL	23	098680104
74	HUB	1	088965A60
75	PUSH PIN SET	1	0986014075
76	SHEAR BOLT AND NUT M10 x 1.5 x 55 10.9	1	Z19407 (Package of 5)
93	OUTER HALF SHAFT	1	B5056US2
94	INNER HALF SHAFT	1	B5056US1098001
97	SAFETY GUARD	1	083US05056



Accessories

Call your dealer for pricing and availability

<p>#1012L269</p> 	<p>#1012L269 Ledger Clearance Setting Gauge.</p> <p>An easy and accurate way of setting the critical clearances between the ledger blade and the rotor chipper blade.</p>
--	---

<p>#1082S352</p> 	<p>#1082S352 Mulch Collector Bag.</p> <p>An easy way to collect your mulch and distribute it where its needed.</p> <p>The mulch bag holds 2.7 cu.ft (28 litres) and is a mildew resistant synthetic material. It is a porous material, allowing air from the rotor to pass through without restricting collection of the chips.</p>
--	---

	<p>#Z97053 CHIPPER-SHREDDER OPERATOR'S MANUAL</p> <p>Available as a download at www.wallensteinequipment.com</p>
--	---


Bolt Torque

Checking Bolt Torque

The tables shown give correct torque values for various bolts and capscrews. Tighten all bolts to the torque values specified in the table, unless indicated otherwise. Check tightness of bolts periodically.

IMPORTANT! If replacing hardware, use fasteners of the same grade.

IMPORTANT! Torque figures indicated in the table are for non-greased or non-oiled threads. Do not grease or oil threads unless indicated otherwise. When using a thread locker, increase torque values by 5%.

 **NOTE:** Bolt grades are identified by their head markings.

Imperial Bolt Torque Specifications

Bolt Diameter	Torque Value					
	SAE Gr. 2		SAE Gr. 5		SAE Gr. 8	
	lbf•ft	N•m	lbf•ft	N•m	lbf•ft	N•m
1/4"	6	8	9	12	12	17
5/16"	10	13	19	25	27	36
3/8"	20	27	33	45	45	63
7/16"	30	41	53	72	75	100
1/2"	45	61	80	110	115	155
9/16"	60	95	115	155	165	220
5/8"	95	128	160	215	220	305
3/4"	165	225	290	390	400	540
7/8"	170	230	420	570	650	880
1"	225	345	630	850	970	1320



SAE Gr. 2



SAE Gr. 5



SAE Gr. 8

Metric Bolt Torque Specifications

Bolt Diameter	Torque Value			
	Gr. 8.8		Gr. 10.9	
	lbf•ft	N•m	lbf•ft	N•m
M3	0.4	0.5	1.3	1.8
M4	2.2	3	3.3	4.5
M6	7	10	11	15
M8	18	25	26	35
M10	37	50	52	70
M12	66	90	92	125
M16	166	225	229	310
M20	321	435	450	610
M30	1,103	1 495	1,550	2 100
M36	1,917	2 600	2,700	3 675



8.8



10.9

Hydraulic Fitting Torque

Tightening Flare Type Tube Fittings

1. Check flare and flare seat for defects that might cause leakage.
2. Align tube with fitting before tightening.
3. Hand-tighten swivel nut until snug.
4. To prevent twisting the tube, use two wrenches. Place one wrench on the connector body and tighten the swivel nut with the second. Torque to values shown.

If a torque wrench is not available, use the FFFT (Flats From Finger Tight) method.

Hydraulic Fitting Torque					
Tube Size OD	Hex Size Across Flats	Torque value		Flats From Finger Tight	
		lbf·ft	N·m	Flats	Turns
3/16	7/16	6	8	2	1/6
1/4	9/16	11–12	15–17	2	1/6
5/16	5/8	14–16	19–22	2	1/6
3/8	11/16	20–22	27–30	1-1/4	1/6
1/2	7/8	44–48	59–65	1	1/6
5/8	1	50–58	68–79	1	1/6
3/4	1-1/4	79–88	107–119	1	1/8
1	1-5/8	117–125	158–170	1	1/8

Values shown are for non-lubricated connections.