

WALLENSTEIN

BY EMB MFG INC.

TRAILER WOOD PROCESSOR MODELS WP865, WP835, WP635 ASSEMBLY INSTRUCTION MANUAL

**Please review and understand the
operators manual before attempting
to operate this machinery.**

EMB MANUFACTURING INC.

**4144 BOOMER LINE
ST. CLEMENTS, ON
N0B 2M0 CANADA
PH: (519) 699-9283
FAX: (519) 699-4146**

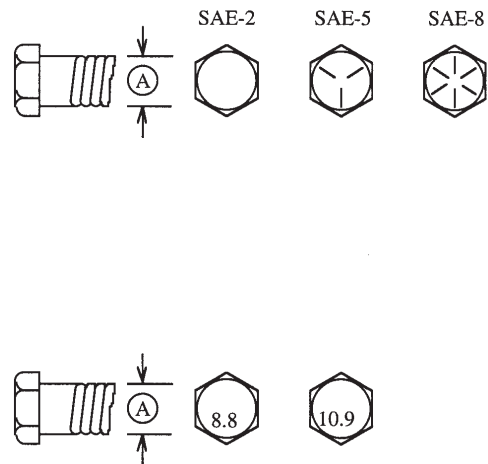
1.0 ASSEMBLY SAFETY

1. Read and understand the Assembly Manual and all safety signs before starting.
2. Follow good safety practices:
 - Keep service area clean and dry.
 - Be sure electrical outlets and tools are properly grounded.
 - Use adequate light for the job at hand.
3. Use properly sized tools, stands, jacks and hoists at all times.
4. Don't handle heavy and/or bulky components alone, ask for help.
5. Position in a large open area to allow access from all sides during assembly.
6. Keep the assembly area neat and clean to prevent slipping or tripping.
7. When using lifting equipment, place jack stands under the machine to securely stabilize it before working on, beside or under it during assembly.
8. Stay away from overhead power lines and obstructions when lifting the machine during assembly. Contact with power lines can cause electrocution. Contact with obstructions can damage components or cause them to fail.
9. Tighten all fasteners to their specified torque, then recheck before using the machine.

2.0 BOLT TORQUE

ENGLISH TORQUE SPECIFICATIONS

Bolt Diameter "A"	Bolt Torque*					
	SAE 2 (N.m) (lb-ft)		SAE 5 (N.m) (lb-ft)		SAE 8 (N.m) (lb-ft)	
1/4"	8	6	12	9	17	12
5/16"	13	10	25	19	36	27
3/8"	27	20	45	33	63	45
7/16"	41	30	72	53	100	75
1/2"	61	45	110	80	155	115
9/16"	95	60	155	115	220	165
5/8"	128	95	215	160	305	220
3/4"	225	165	390	290	540	400
7/8"	230	170	570	420	880	650
1"	345	225	850	630	1320	970



Torque figures indicated above are valid for non-greased or non-oiled threads and heads unless otherwise specified. Therefore, do not grease or oil bolts or caps crews unless otherwise specified in this manual. When using locking elements, increase torque values by 5%.

* Torque value for bolts and capscrews are identified by their head markings.

3.0 ASSEMBLY

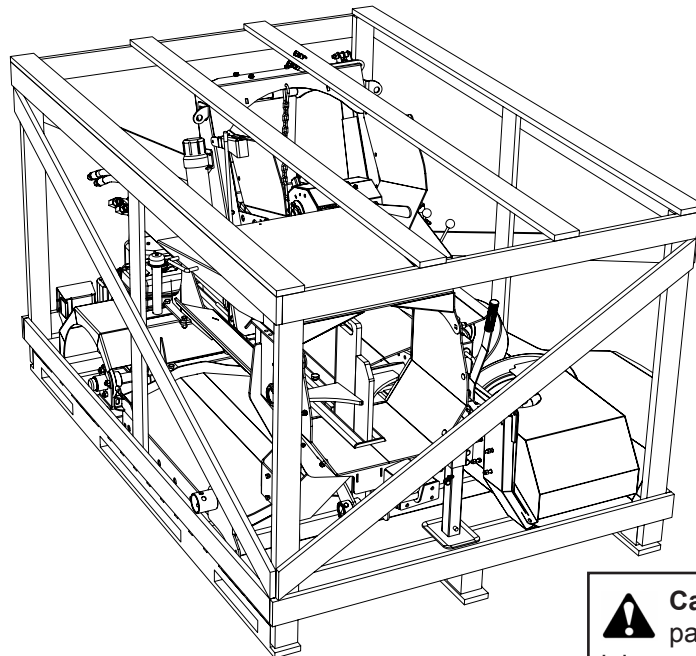
This assembly manual is for all trailer model Wood Processors. The WP865 is used as an example but generally applies to all wood processor models. Model specific instructions are identified in the manual.

The machine is shipped from the factory in a partially disassembled configuration and attached to a pallet that provides easy moving and handling. Always use tools, equipment and fork lifts of appropriate size and capacity for the job.

Inspect for damage from shipping, immediately contact the shipping company if damage is found.

When the machine is shipped, follow this assembly procedure:

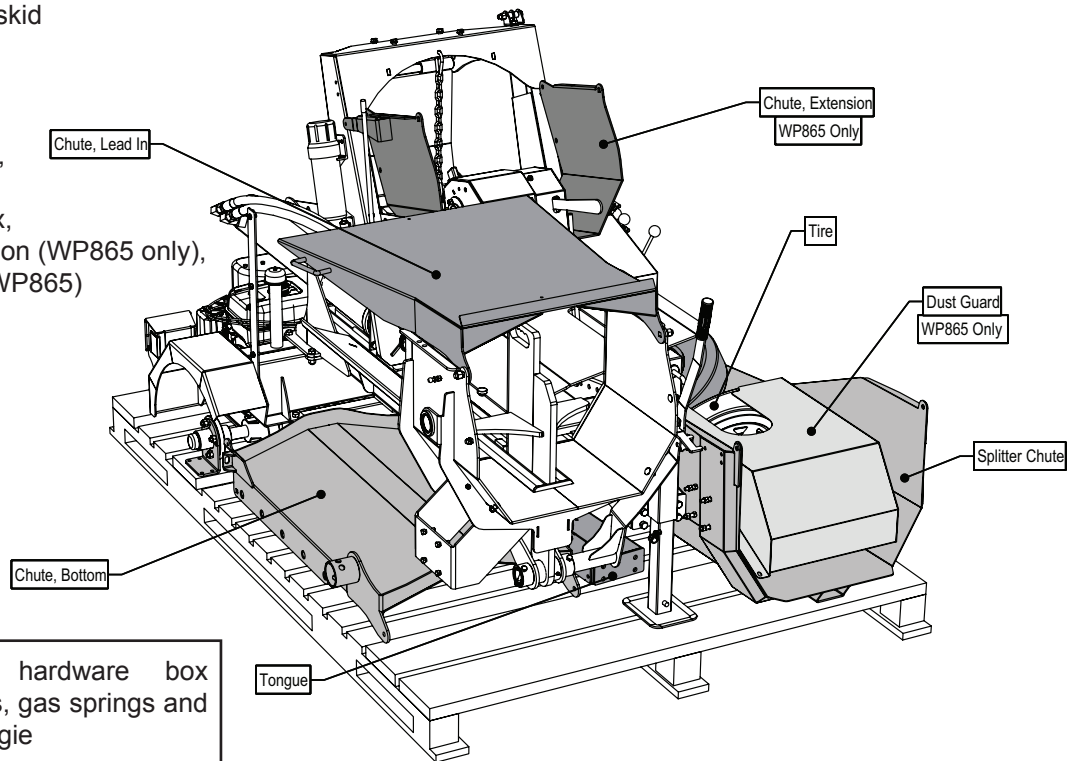
1. Clear the area of bystanders, especially small children.
2. Be sure you have all the required tools before you start.
3. Move the shipping package into an area where it is accessible from all sides.
4. Remove the screws holding the lid to the shipping pallet, remove the lid and set aside away from the assembly area.



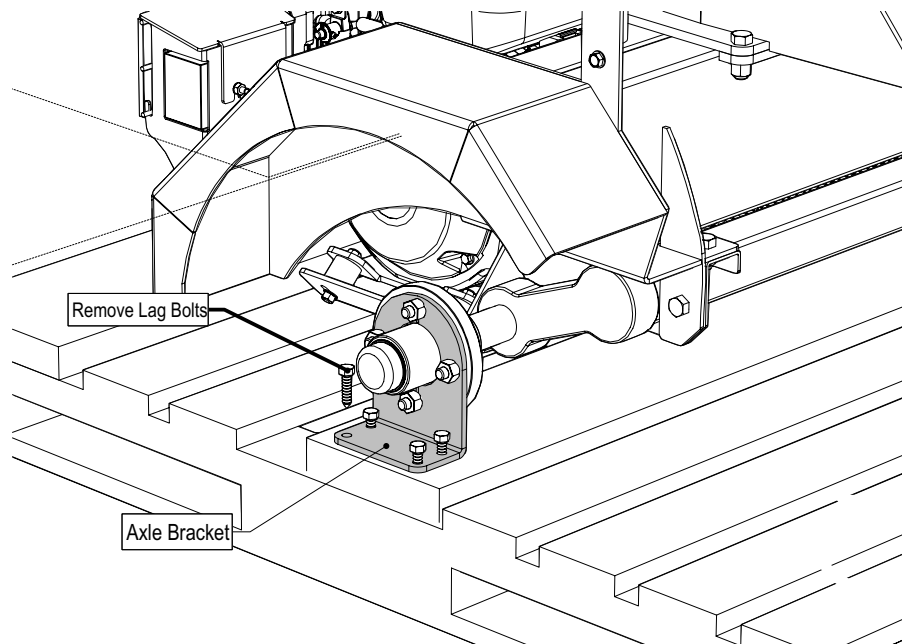
Caution: Heavy or bulky parts: prevent potential injury ask for help when lifting or moving heavy, bulky parts.

5. Remove the following loose components from the skid to make assembly easier. Set them aside in a safe place, close by. Some parts are attached with screw to the skid

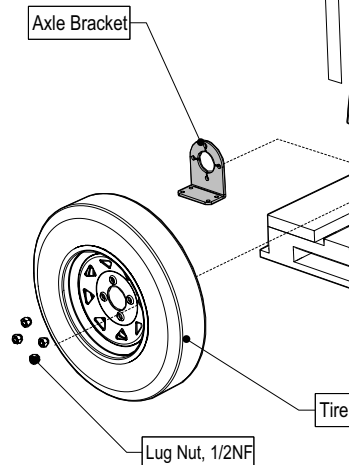
- tires,
- splitter chute,
- tongue,
- bottom chute,
- lead in chute,
- hardware box,
- chute extension (WP865 only),
- dust guard (WP865)



6. On the left and right side, remove the lag bolts securing the hub mounted shipping brackets to the skid, but do not remove the brackets from hub.

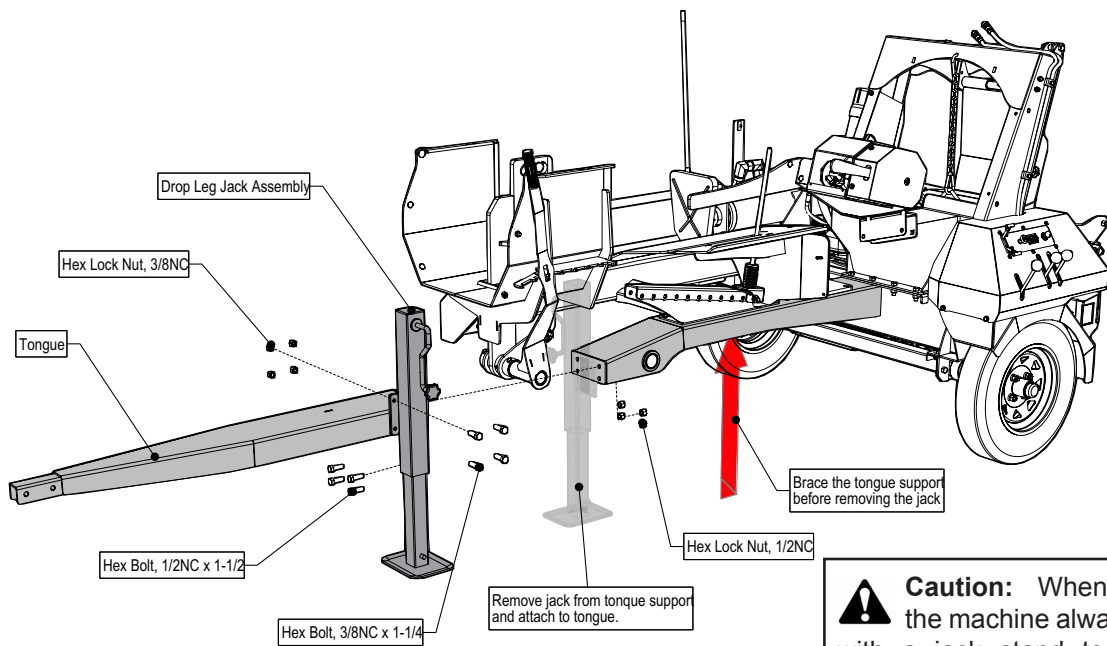


7. Lift one side of the wood processor with a tire jack under the axle, brace the axle with jack stand. Undo the lug nuts, and remove the axle bracket from the hub and install the tire assembly with the lug nuts.
8. Block the tire and repeat step 7 for the other side.



Caution: When raising the machine always brace with a jack stand to prevent potential injury from the machine slipping during assembly.

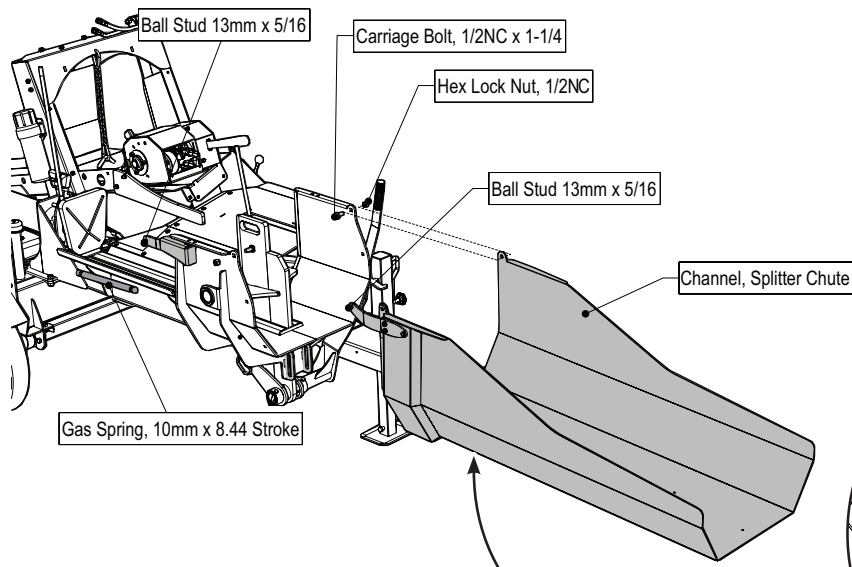
9. When both wheels are on, with the aid of two helpers prepare to roll the wood processor off of the skid.
 - Grab hold and lift the tongue support (where the jack is attached),
 - helpers: positioned on either side of the wood processor by the wheels,
 - in a controlled manner, roll the wood processor off of the skid onto the floor.
10. With the wood processor on the floor, brace the tongue support, block the wheels and remove the jack assembly.
11. Find the tongue and fasten the jack assembly to it as shown in the diagram.
12. Take the tongue / jack assembly and fasten it to the tongue support. (Where the jack was attached.)



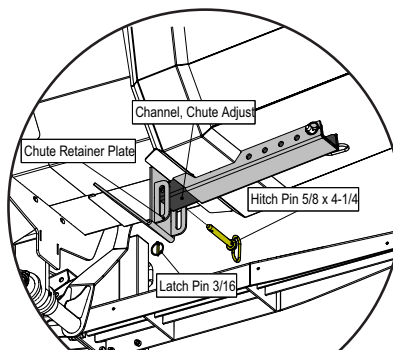
Caution: When raising the machine always brace with a jack stand to prevent potential injury from the machine slipping during assembly.

Splitter Chute Ass'y: Models WP635 & WP835

13. Attach the splitter chute channel to the splitter cradle with 2 x carriage bolt / nuts.
14. Snap the gas spring onto the ball stubs, and secure each end with spring clips.
15. Secure the chute adjust channel with the hitch pin and latch pin.



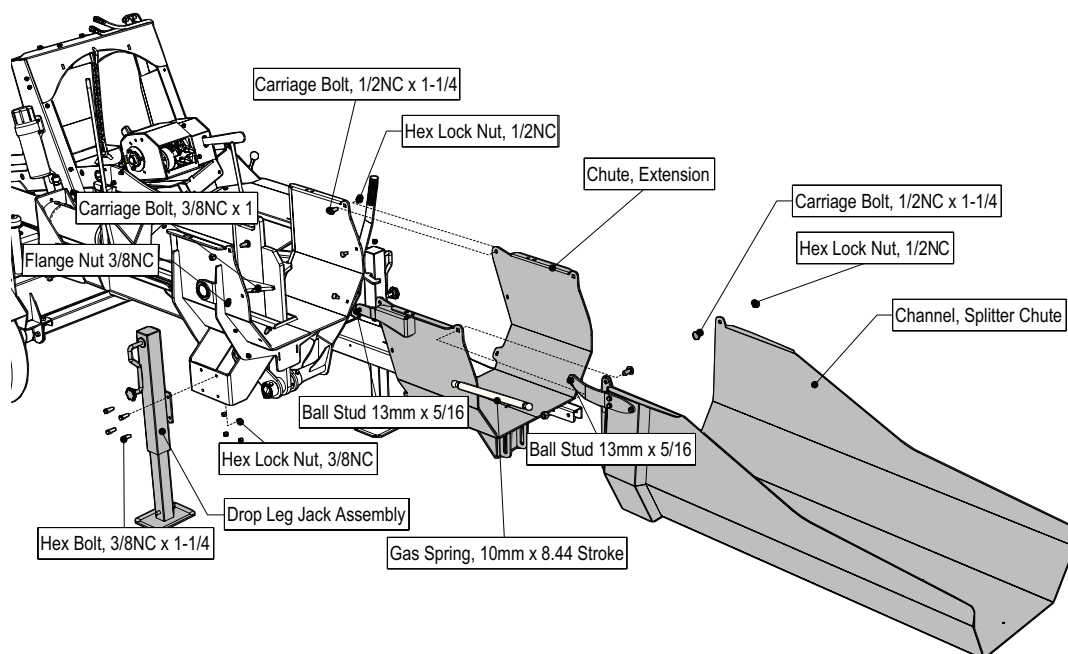
Caution: Heavy or bulky parts: prevent potential injury ask for help when lifting or moving heavy, bulky parts.



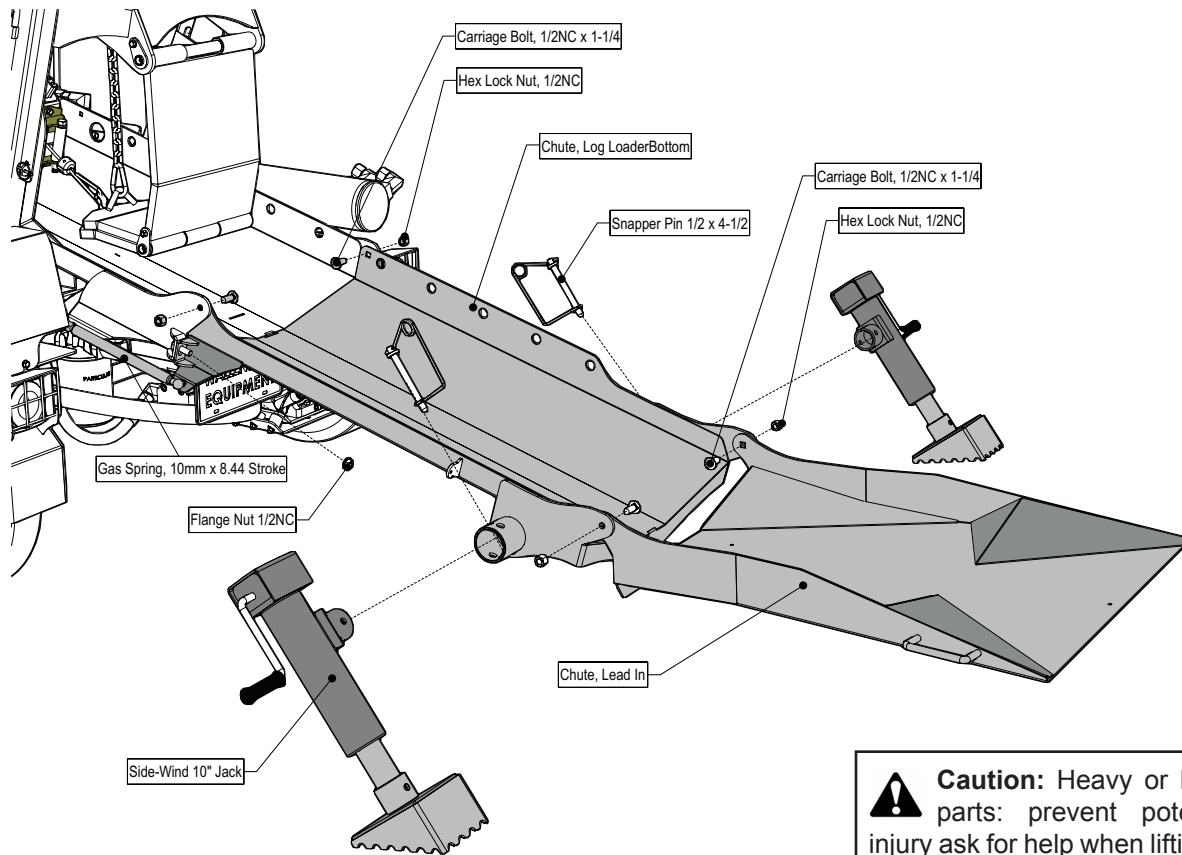
Chute Adjust Channel - all models

Splitter Chute Ass'y: Model WP865

16. Use 4 hex bolts and nuts to attach the drop leg jack to the side of the splitter channel.
17. Attach the chute extension to the splitter cradle with 2 x 1/2" carriage bolt / nuts and 4 x 3/8" carriage bolts and nuts.
18. Next, attach the splitter chute channel to the extension chute with 2 x carriage bolt / nuts.
19. Snap the gas spring onto the ball stubs, and secure each end with spring clips.
20. Secure the chute adjust channel with the hitch pin and latch pin.

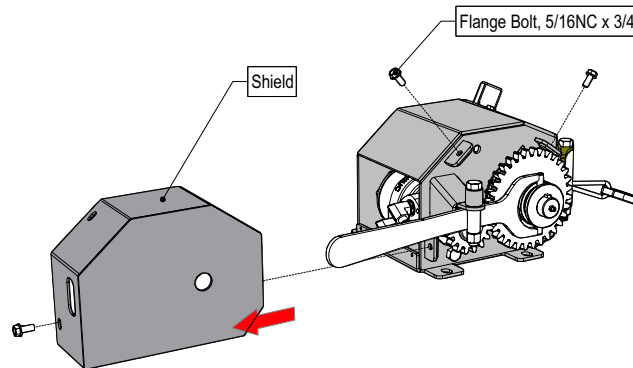


21. Find the log loader bottom chute and fasten it to the log chute using the 2 x carriage bolts / nuts and 2 x flange nuts as shown in the diagram.
22. Attach 2 x gas spring to the ball studs on either side of the loader chute, and secure with spring clips.
23. Attach the 2 x side wind jacks to the jack sockets, secure with the snapper pins.
24. Using the two carriage bolts / nuts fasten the lead in chute to the loader chute as shown in the diagram.

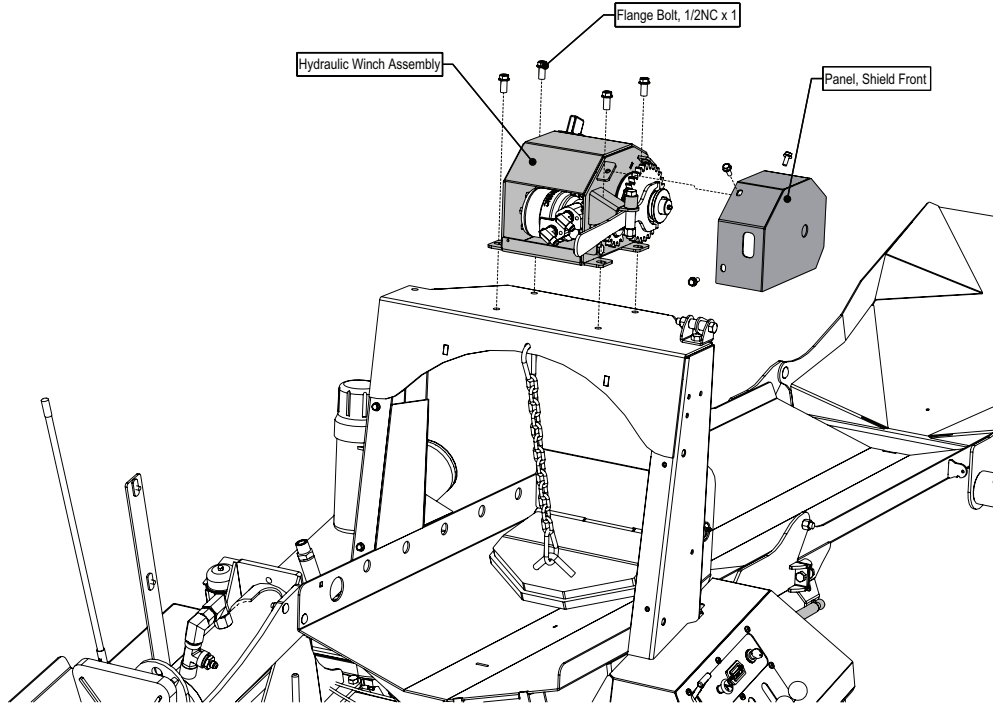


Caution: Heavy or bulky parts: prevent potential injury ask for help when lifting or moving heavy, bulky parts.

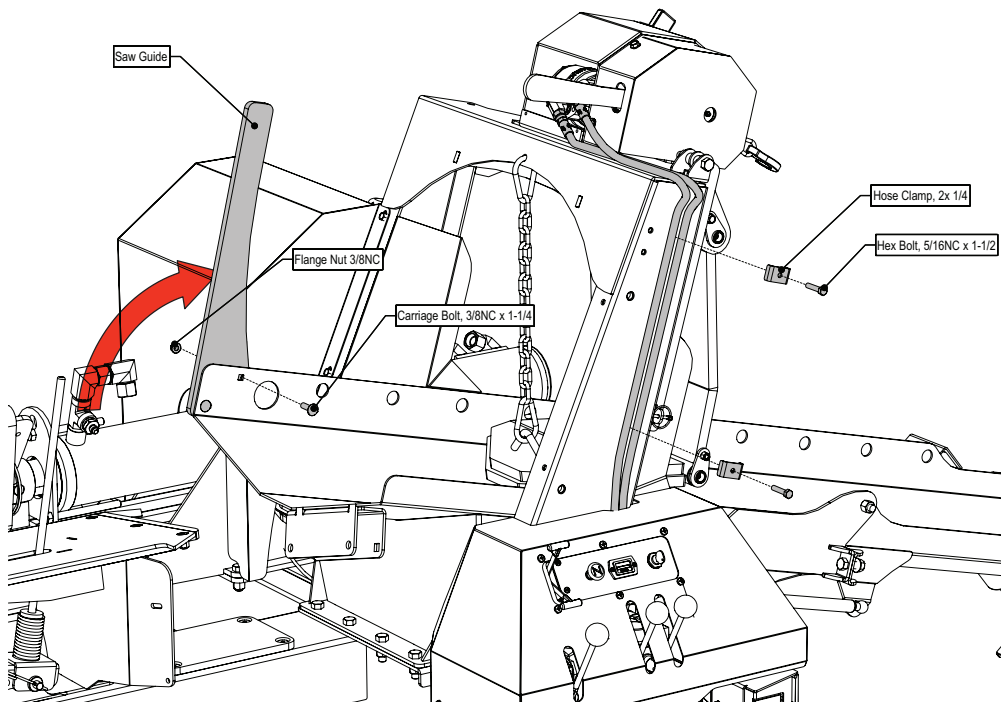
25. Find the winch, the shield covering the gears will need to be removed to gain access to the mounting tabs. Unscrew 3 x flange bolts, pull the shield slightly out and pull forward to remove.



26. Place the winch on top of the channel bridge, and fasten down with 4 x flange bolts. Re-assemble the shield back onto the winch.

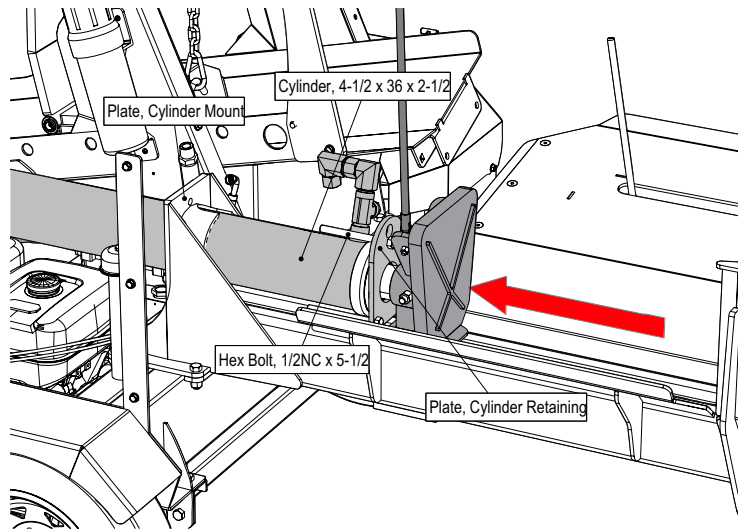


27. Secure the winch hydraulic lines onto the side of the channel bridge, using 2 x hose clamps and hex bolts.
28. Swivel the saw guide up into position and fasten with 2 x carriage bolt and nuts.



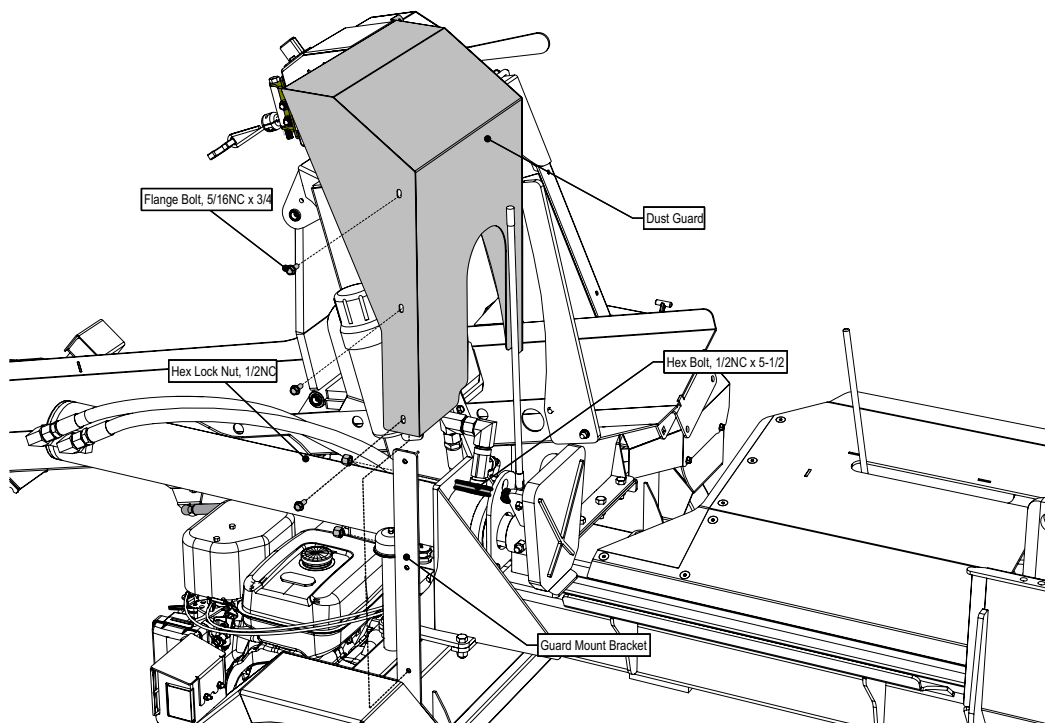
Cylinder and Dust Guard Ass'y: Model WP865

29. Hydraulic cylinder needs to be assembled into position: push the cylinder ass'y back to the cylinder mount plate, align the 3 x hex bolts in the cylinder retaining ring with the bolt holes in the mount plate.



30. When the cylinder is in position, bolt the cylinder in place with the 3 x hex bolts and nuts.

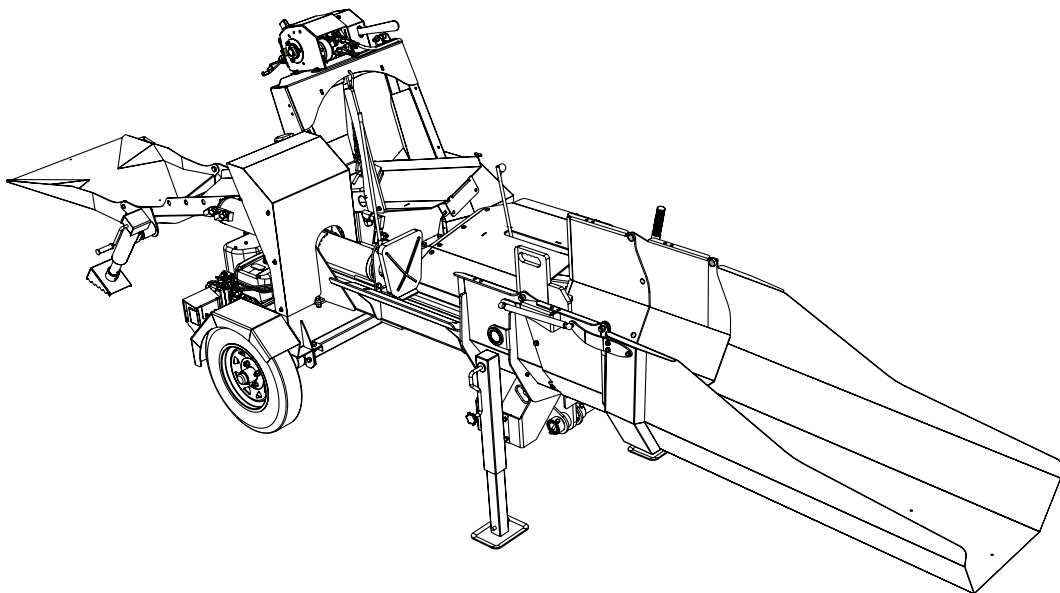
31. Install the dust guard onto the guard mount bracket with the 3 x flange bolts and hex lock nuts.



After the Wood Processor is fully assembled, recheck all the fasteners and ensure the owners manual is in the manual tube.

Go thru the pre-delivery inspection check to ensure the machine is properly set up and functioning.

<input checked="" type="checkbox"/>	Pre-Delivery Inspection
	Inspect for damage from shipping, immediately contact the shipping company if damage is found.
Wood Processor	
	Engine Starts and Runs
	Hydraulic Splitter Controls Function
	Hydraulic Cylinder Functions
	Splitter Chute Folds Up
	Wedge Height Adjuster Functions
	Loader & Leadin Chutes Fold Up & Latch Securely
	Log Stabilizer Moves Freely
	Fasteners Tight
	Grease Zerks / Lubricate Pivot Points
	Hydraulic Connections
	Review Operating and Safety Instructions
Safety Checks	
	All Safety Decals Installed
	Guards and Shields Installed and Secured
	All Jacks Function
	Retainer Installed Through Hitch Points
	Check Tire Pressure
	Check Wheel Nuts
	Check Operation of Running / Brake Lights
	Review Operating and Safety Instructions
Hydraulic Winch	
	Check Winch Clutch Handle Control
	Check Winch Rope / Hook / Fairlead
	Check Hydraulic Function
	Grease Zerks / Lubricate Pivot Points
	Review Operating and Safety Instructions
Optional Equipment	
	Chain Saw Holster: Installed securely
	6 Way Wedge: Check Height Adjuster
	Chainsaw Pivot: Check Pivot Function



**Congratulations on
successfully completing assembly of your
Wallenstien Wood Processor**