



# Uncratering and Assembly Instructions Enclosed



# WALLENSTEIN



## WX520 WOOD SPLITTER UNPACKING & ASSEMBLY INSTRUCTIONS

EMB MFG INC.  
4144 Boomer Line  
St. Clements, Ontario N0B 2M0  
Canada  
Toll Free: 1-877-695-9283  
Phone: 519-699-9283  
Fax: 519-699-4146  
[www.embmfg.com](http://www.embmfg.com)



## **WARNING**

Detailed information on standard workshop and safety procedures, and general servicing operations is not included in this manual, which has been prepared to assist qualified service personnel. EMB MFG. assumes no responsibility or liability for **PERSONAL INJURY** or **EQUIPMENT DAMAGE** which results from any servicing procedure performed, including those instructions outlined in this manual. Before performing a servicing operation, an individual must have determined to his/her satisfaction that a personal injury or **EQUIPMENT** damage will not result from the servicing procedure or tools selected.

## **IMPORTANT**

Please refer to torque chart for all torque specifications.

## Uncrating the WX520 Wood Splitter

1. Remove all screws securing upper part of crate to lower skid. There are two (2) screws located at each of four (4) corners around the bottom of crate. **Photo 1**

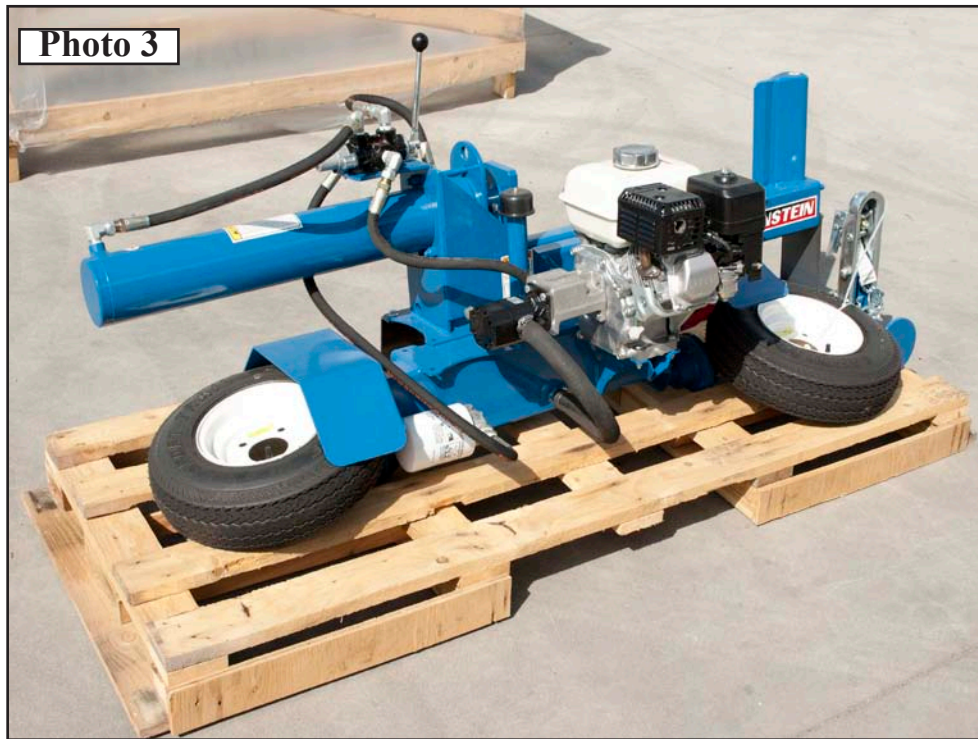


2. Remove the upper portion of crate. **Photo 2**





3. Locate tires and remove tie-wraps securing them to wood skid. *Photos 3 & 4*

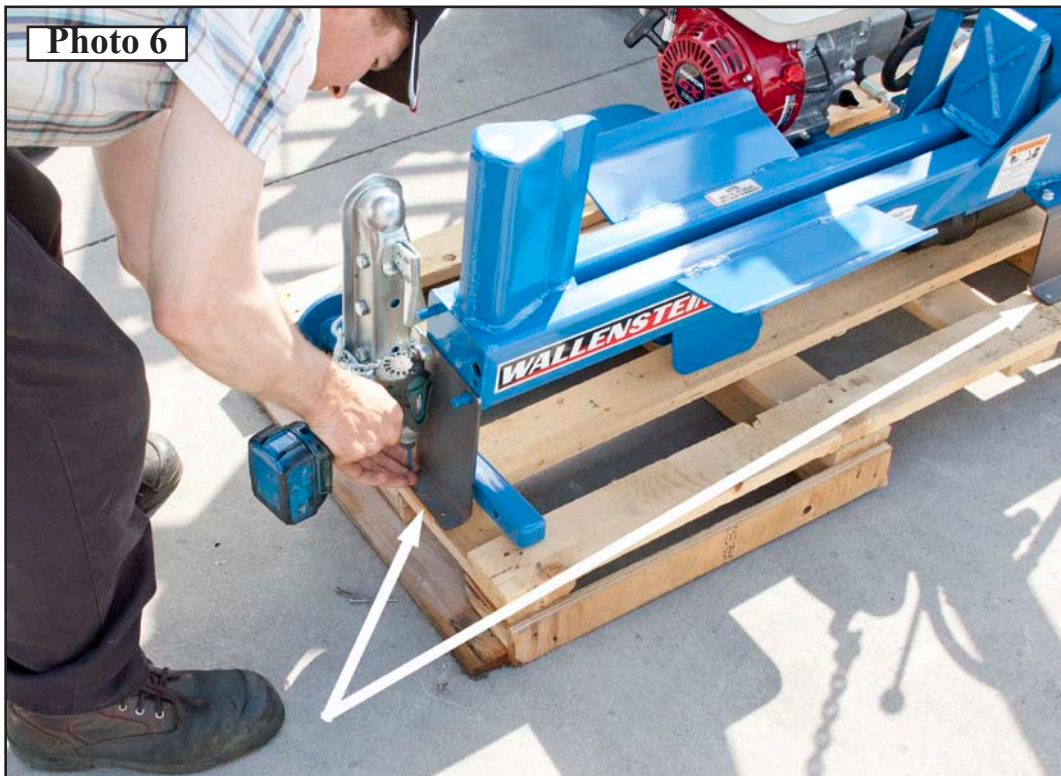




- Using a lift truck or another convenient and SAFE method, secure one end of splitter (near hydraulic handle) to prevent it from falling over while removing shipping brackets. *Photo 5*

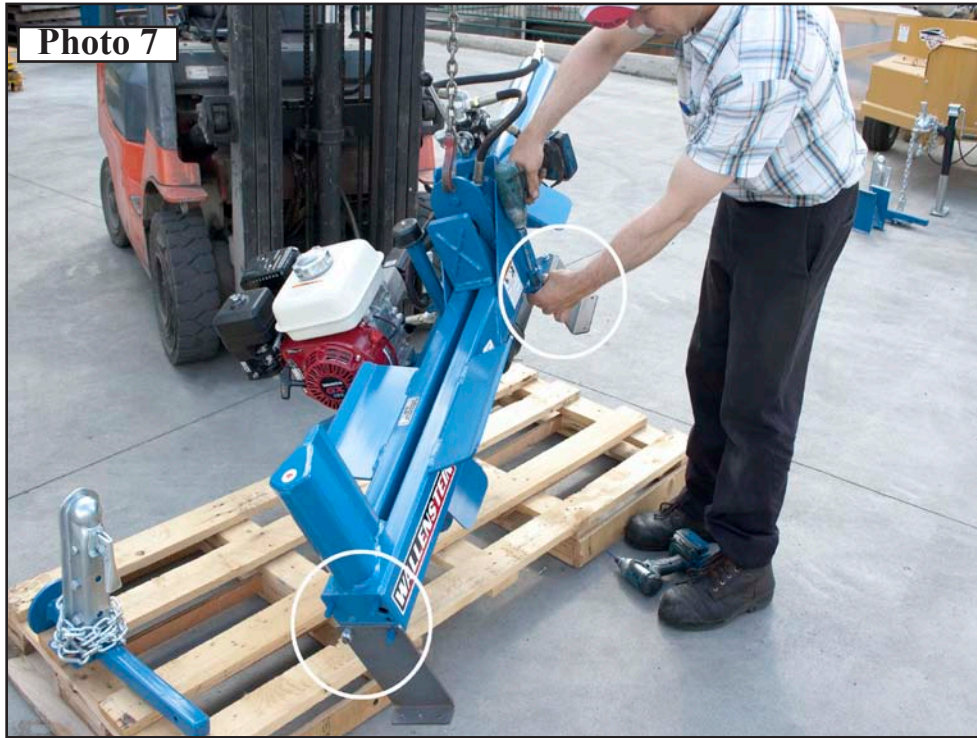


- Unfasten both brackets at wood skid by removing wood screws. *Photo 6*





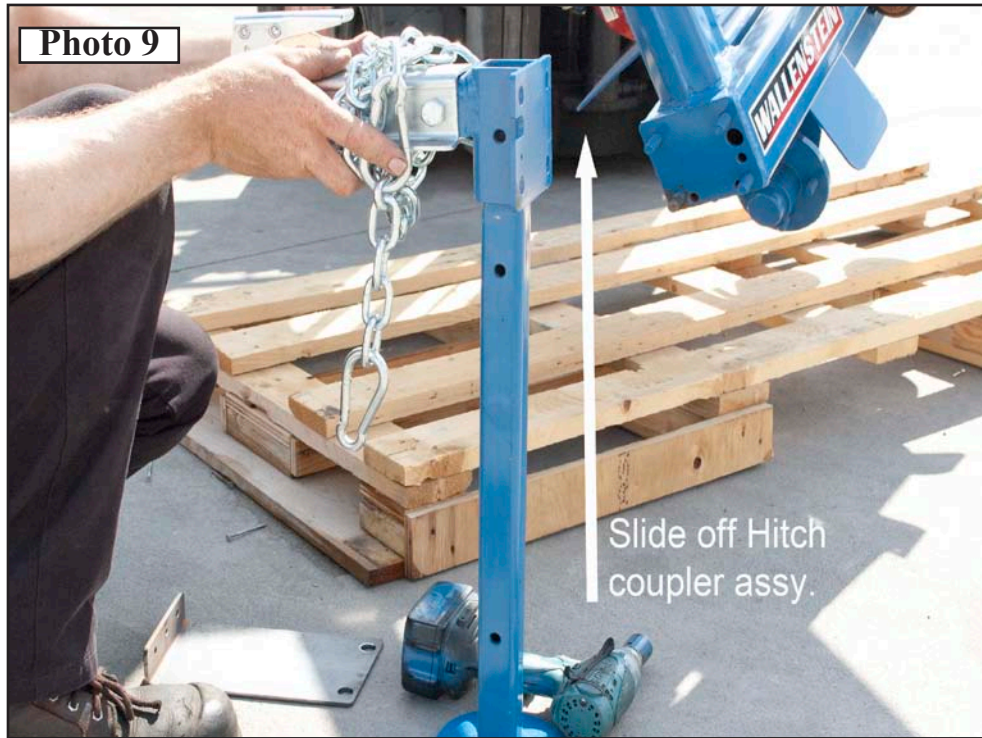
7. Suspend splitter slightly off skid and remove the shipping brackets from splitter.  
*Photo 7*



8. Remove fasteners securing 2" Hitch Coupler and Jack Stand at skid *Photo 8*



8. Slide the 2" Hitch Coupler off Jack Stand *Photo 9*

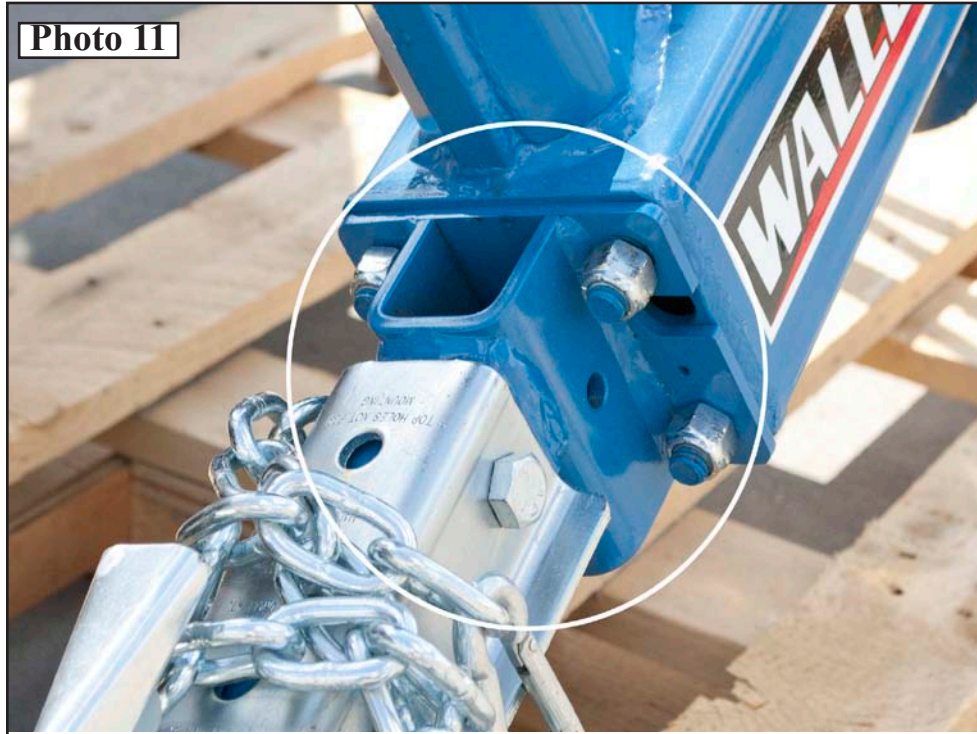


9. Locate plastic Manual Tube and remove hardware located wrapped inside packaged Operator's Manual. *Photo 10*





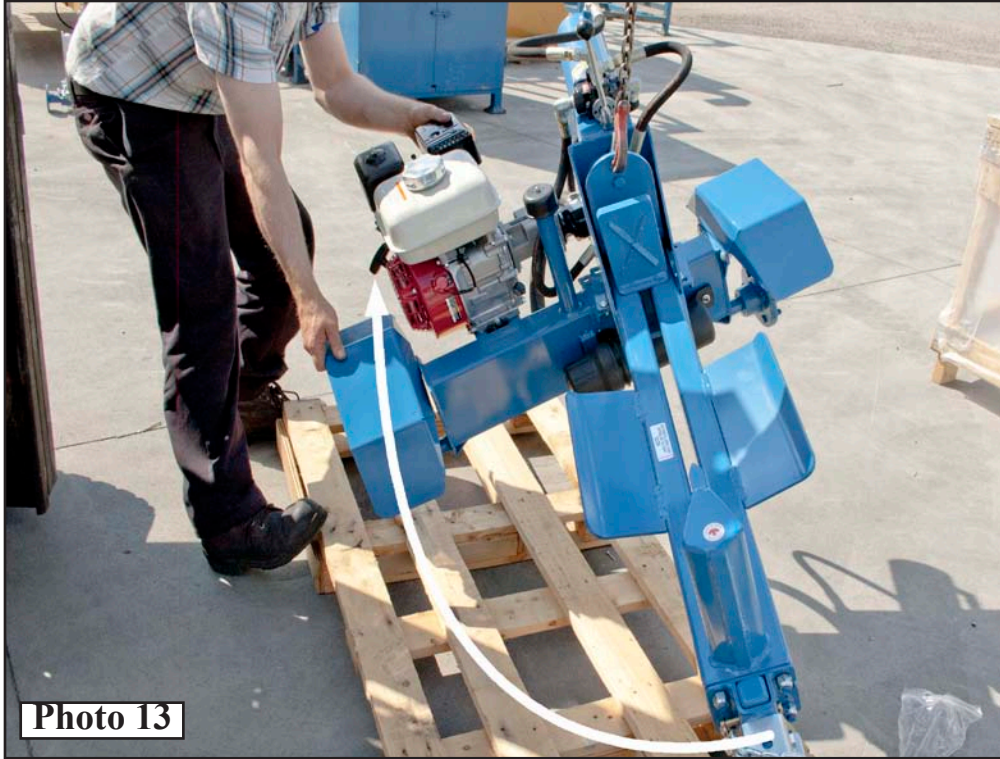
10. Secure the 2" Hitch Coupler at the Splitter using four 1/2" Locknut *Photo 11*



11. Slide Front Jack into position at 2" Hitch Coupler Assy and secure with one (1) Snapper Pin 3/8 x 2-1/4 *Photo 12*

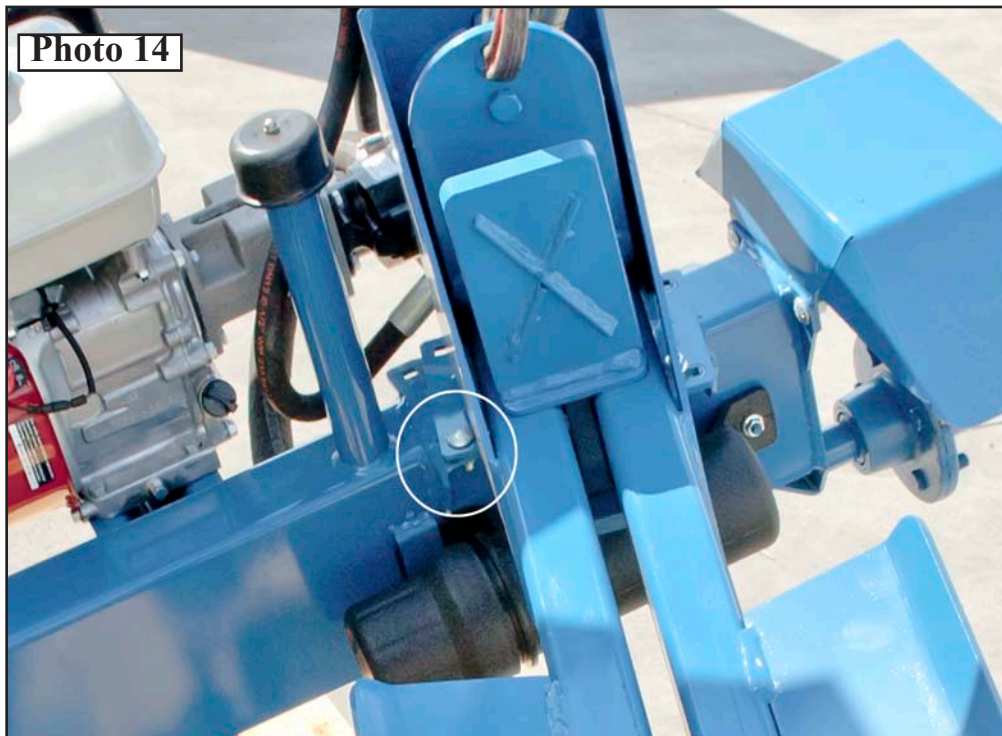


12. Swivel Axle Assembly 90 degrees to Main Base Weldment. *Photo 13*



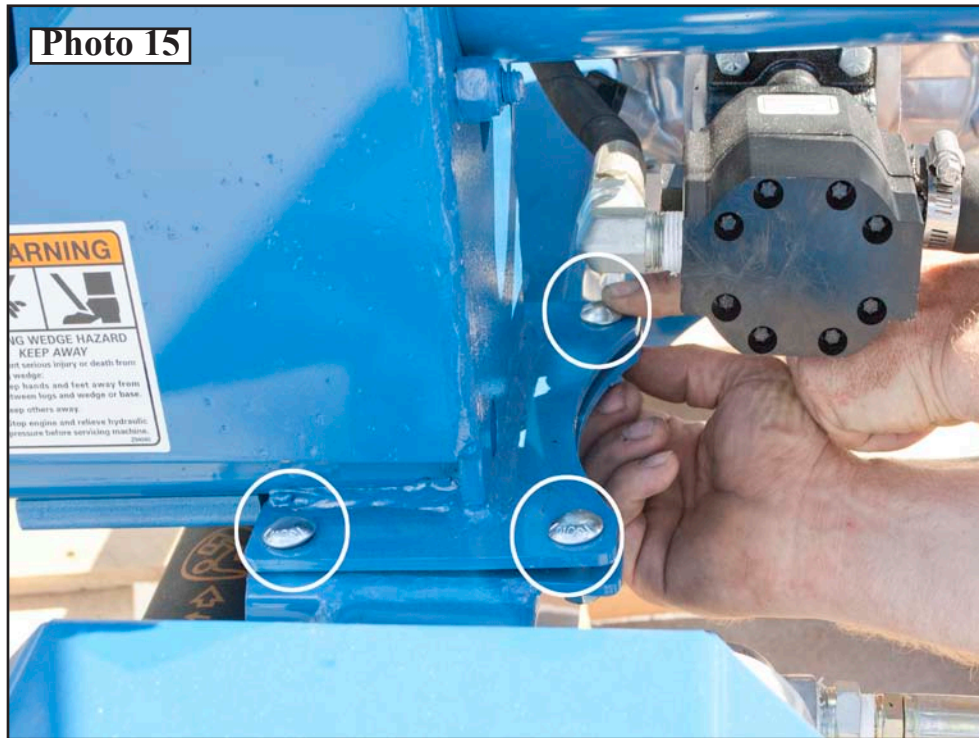
**NOTE**

*There is one (1) 3/8 x 1 Carriage Bolt and one (1) 3/8" Flange Nut at this location to allow the Main Splitting Frame to swivel. Photo 14*





13. Install the remaining three (3) 3/8 x 1 Carriage Bolts and three (3) 3/8" Flange Nuts to the axle assembly and secure. *Photo 15*



14. Locate Right Side Fender and remove the single fastener securing the fender in the rear most position for shipping purposes. *Photo 16*





15. Reassemble the fender back to the right side moving it forward and securing it with two (2) 3/8 x 3/4 Carriage Bolts and two (2) 3/8" Flange Nuts. **Photo 17**



16. Install one (1) 4.80-8 LRB SportTrail 3-3/4 Solid, Right Side Tire and secure with four (4) Lug Nut 1/2NF. **Photo 18**



17. Install one (1) 4.80-8 LRB SportTrail 3-3/4 Solid, Left Side Tire and secure with four (4) Lug Nut 1/2NF. *Photo 19*



18. Gently lower completed splitter assembly to the ground. *Photo 20*

