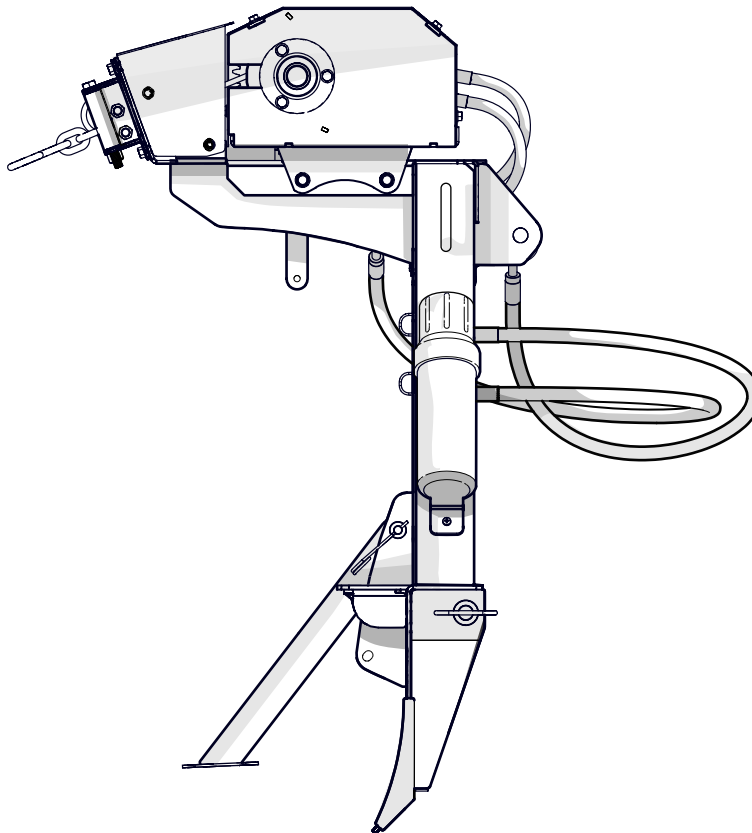


PARTS MANUAL

Serial Number 5351 & Up

FX35 HYDRAULIC LOG SKIDDING WINCH



Foreword

This Wallenstein parts manual is prepared to assist customers in ordering quality OEM replacement parts.

Regular maintenance combined with replacing old, worn or broken parts with the correct OEM parts is essential in prolonging the life of your Wallenstein product. Refer to this manual to identify replacement parts.

To order parts, contact your Wallenstein dealer or distributor. Have the product model and serial number handy.

If your dealer is no longer available, please go to our website: <http://wallensteinequipment.com> and click on the [Dealer Locator](#) to find the nearest dealer.

All information contained in this parts manual is current as per the revision date at the bottom of the page. Wallenstein reserves the right to change product specifications at any time without notice.

If your product specifications differ from those contained in this manual, contact Wallenstein for current information.

Reproduction of information in this parts manual is prohibited without prior written permission from Wallenstein Equipment Inc.

Wallenstein Equipment Inc. • © 2019

WARNING!

Refer to the operators manual for safe operation and maintenance.

Maintenance should be performed by trained personnel only.

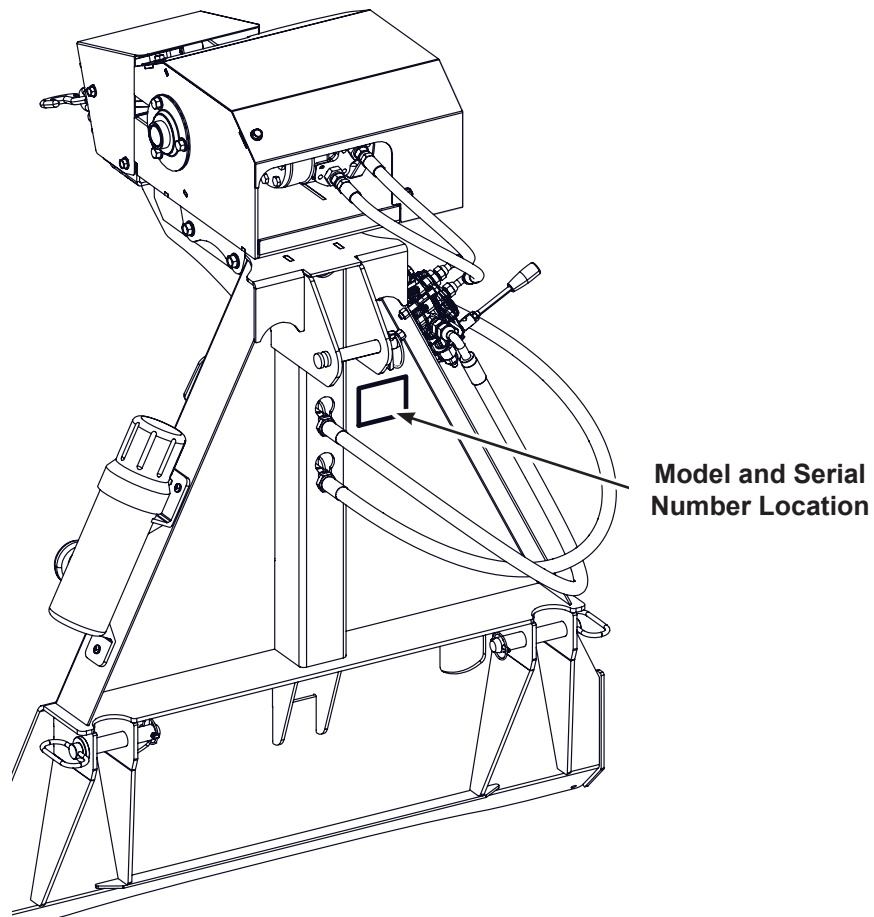
Serial Number Location

Always provide the model and serial number of your Wallenstein product when ordering parts or requesting service or other information. This information is found on the product information plate as shown below.

Record your product information here for future reference.

Model _____

Serial Number _____

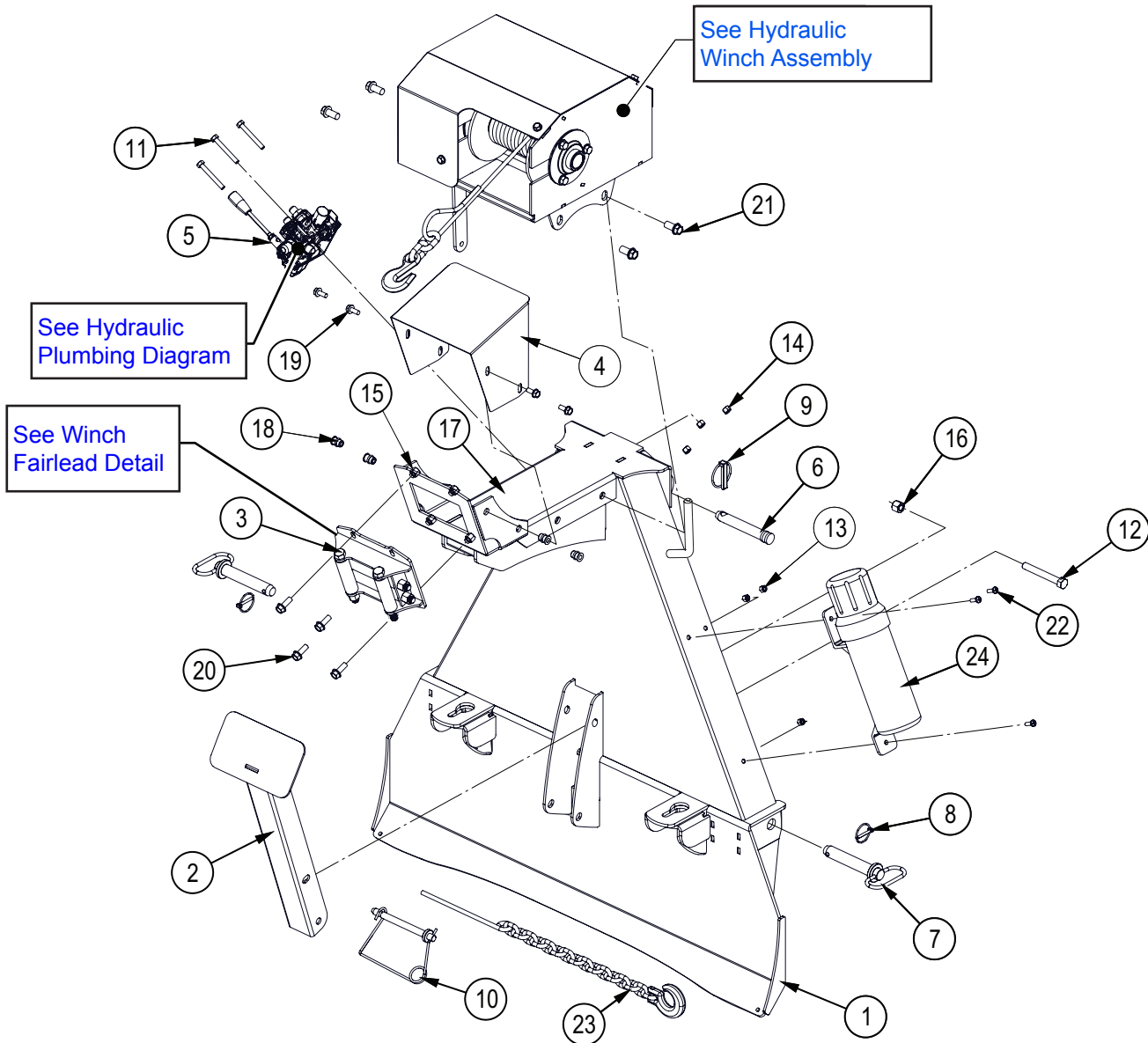


www.wallensteinequipment.com

Contents

Main Parts	4
Hydraulic Winch	5
Winch Drum Detail	6
Fairlead Detail	7
Hydraulic Plumbing Diagram	8
Decal Layout	9
Accessories	10
Common Bolt Torque Values	11
Hydraulic Fitting Torque Values	12

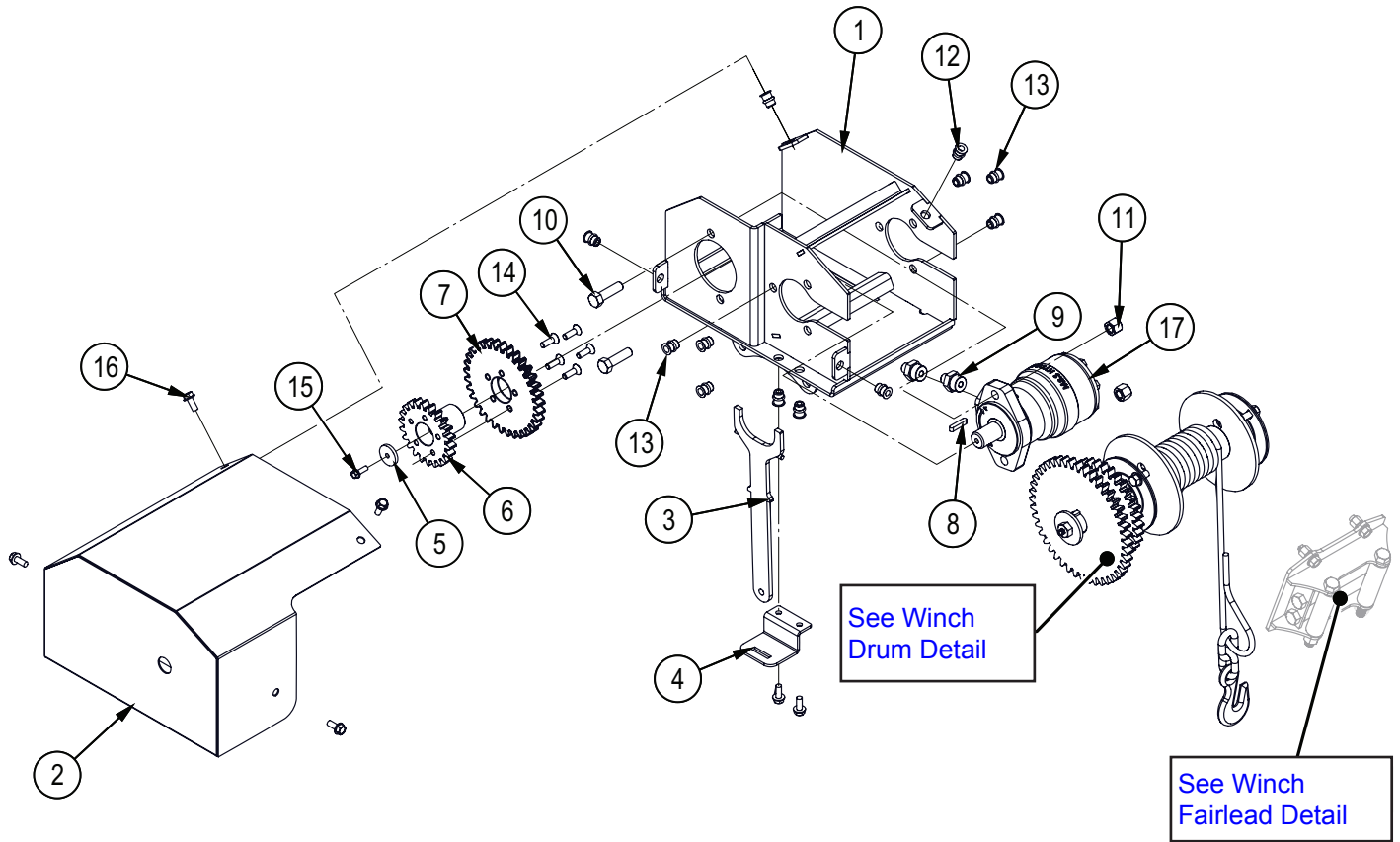
Main Parts



Item No.	Part No.	Description	Qty
1	5016W001	Main Frame	1
2	5016W002	Storage Stand	1
3	5081A101	Fairlead	1
4	5016L020	Guard	1
5	Z56216	Single Spool Valve, VC Tandem SC x 12GPM	1
6	Z11122	Toplink Pin, 3/4" x 3-7/8"	1
7	Z11251	Hitch Pin, 7/8" x 4-1/4"	2
8	Z12110	Lynch Pin, 3/16"	2
9	Z12140	Lynch Pin, 7/16"	1
10	Z12441	Snap Lock Pin, 1/2" x 4-1/2"	1
11	Z71225	Hex Bolt, 5/16NC x 2-1/2"	3
12	Z71537	Hex Bolt, 1/2NC x 3-3/4"	1
13	Z72211	Hex Lock Nut, 1/4NC	3

Item No.	Part No.	Description	Qty
14	Z72221	Hex Lock Nut, 5/16NC	3
15	Z72231	Hex Lock Nut, 3/8NC	4
16	Z72251	Hex Lock Nut, 1/2NC	1
17	Z72551	Serrated Flange Locknut, 1/2NC	4
18	Z72957	Rivet Nut, 5/16NC x 3/12	4
19	Z76121	Flange Bolt, 5/16NC x 3/4"	4
20	Z76134	Flange Bolt, 3/8NC x 1"	4
21	Z76153	Flange Bolt, 1/2NC x 1"	4
22	Z78301	Machine Screw, 1/4NC x 3/4"	3
23	Z92318	Choker Chain, 5/16" x 90"	1
24	Z96503	Manual Tube, 3-1/2" Short	1

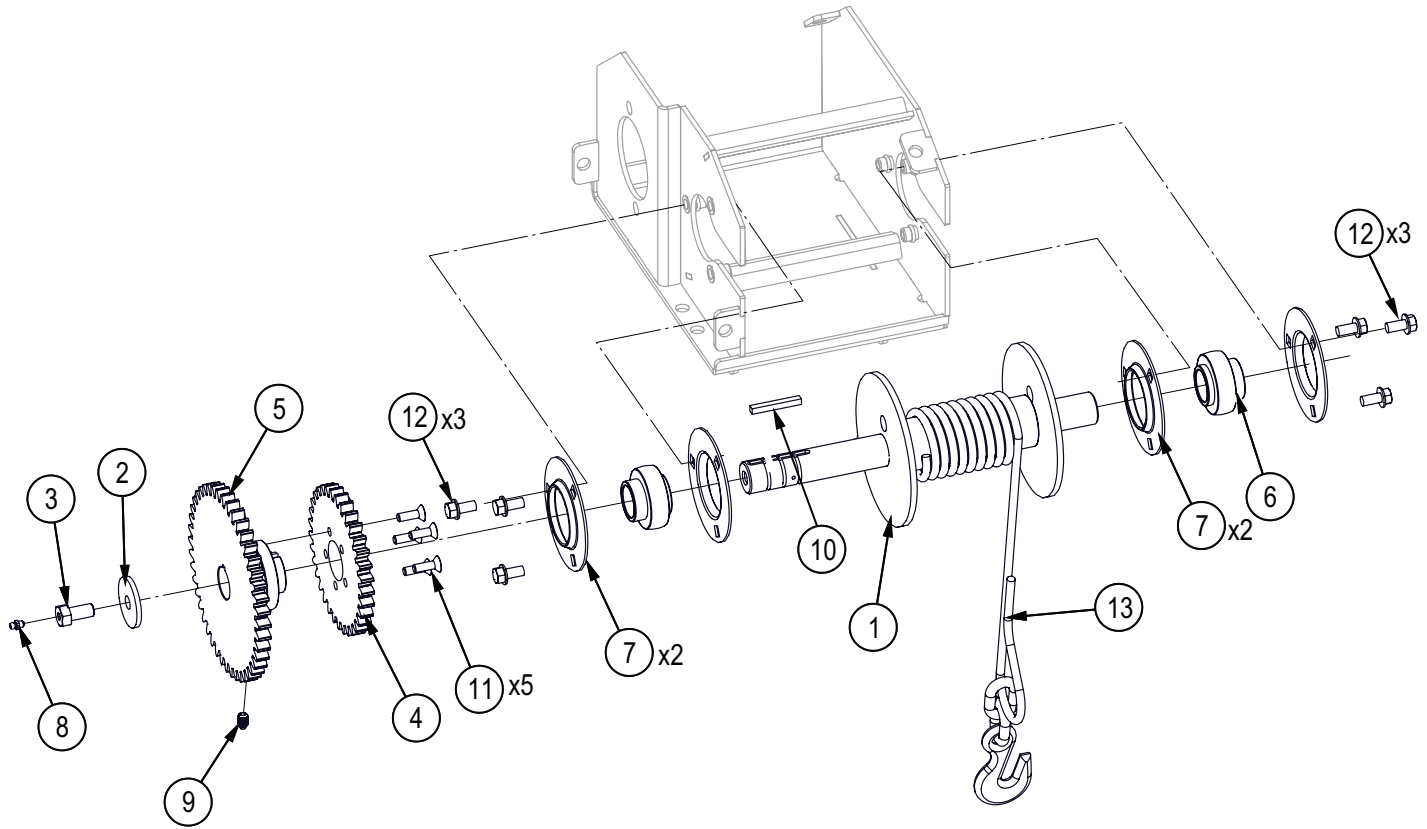
Hydraulic Winch



Item No.	Part No.	Description	Qty
1	6083W215	Housing, Winch	1
2	6083W203	Shield	1
3	6083W207	Clutch Lever	1
4	6083L215	Lever Bracket	1
5	6083L293	Washer, Motor Shaft	1
6	6083M255	Gear, Low Drive	1
7	6083M256	Gear, High	1
8	Z46594	Blind Chipper Key, 1/4" x 1/4" x 1-1/4"	1
9	Z51645	Straight, MJIC x MORB 0610	2

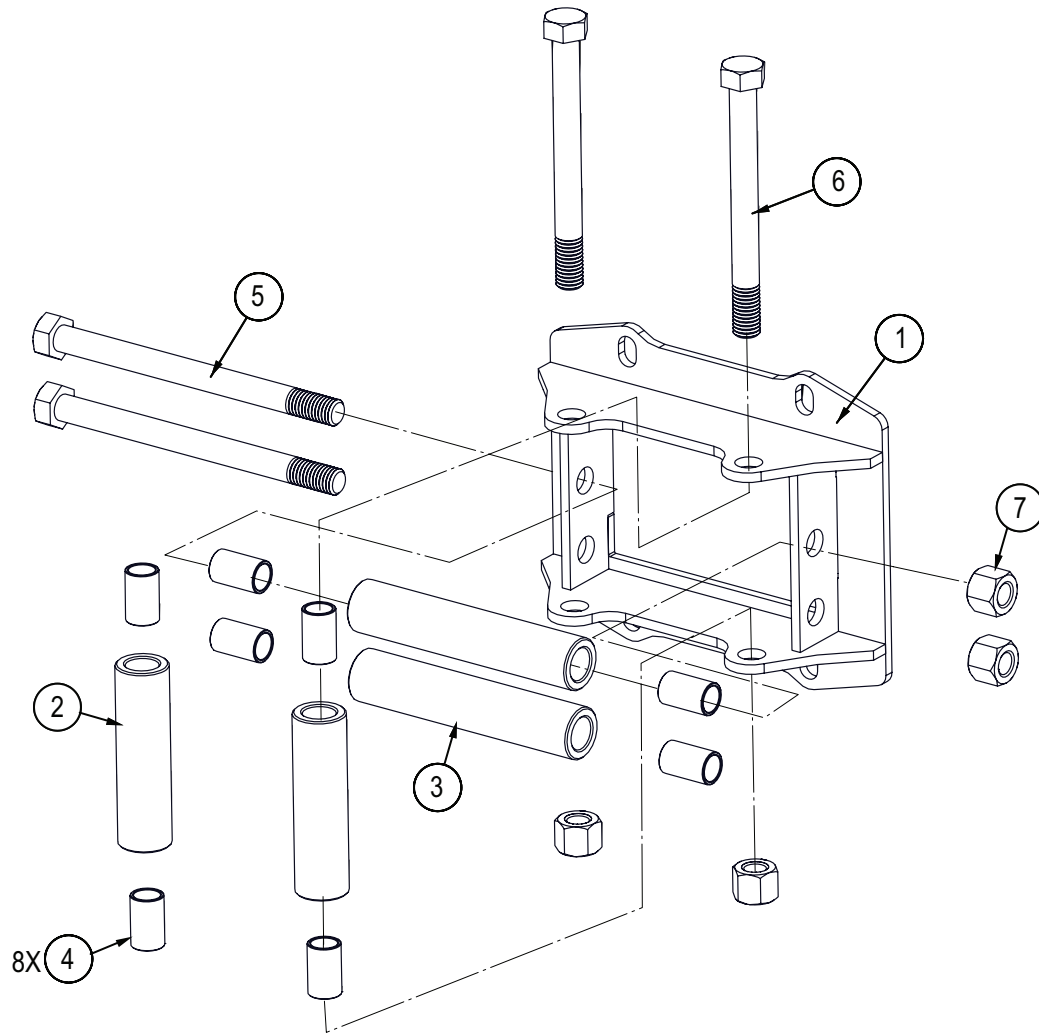
Item No.	Part No.	Description	Qty
10	Z71517	Hex Bolt, 1/2NC x 1-3/4"	2
11	Z72251	Hex Lock Nut, 1/2NC	2
12	Z72957	Rivet Nut, 5/16NC x 312	6
13	Z72959	Rivet Nut, 3/8NC x 312	6
14	Z75222	FHCS, 5/16NF x 1"	5
15	Z76111	Flange Bolt, 1/4NC x 3/4"	1
16	Z76121	Flange Bolt, 5/16NC x 3/4"	6
17	Z54102	Hydraulic Motor, 200CCR	1

Winch Drum Detail



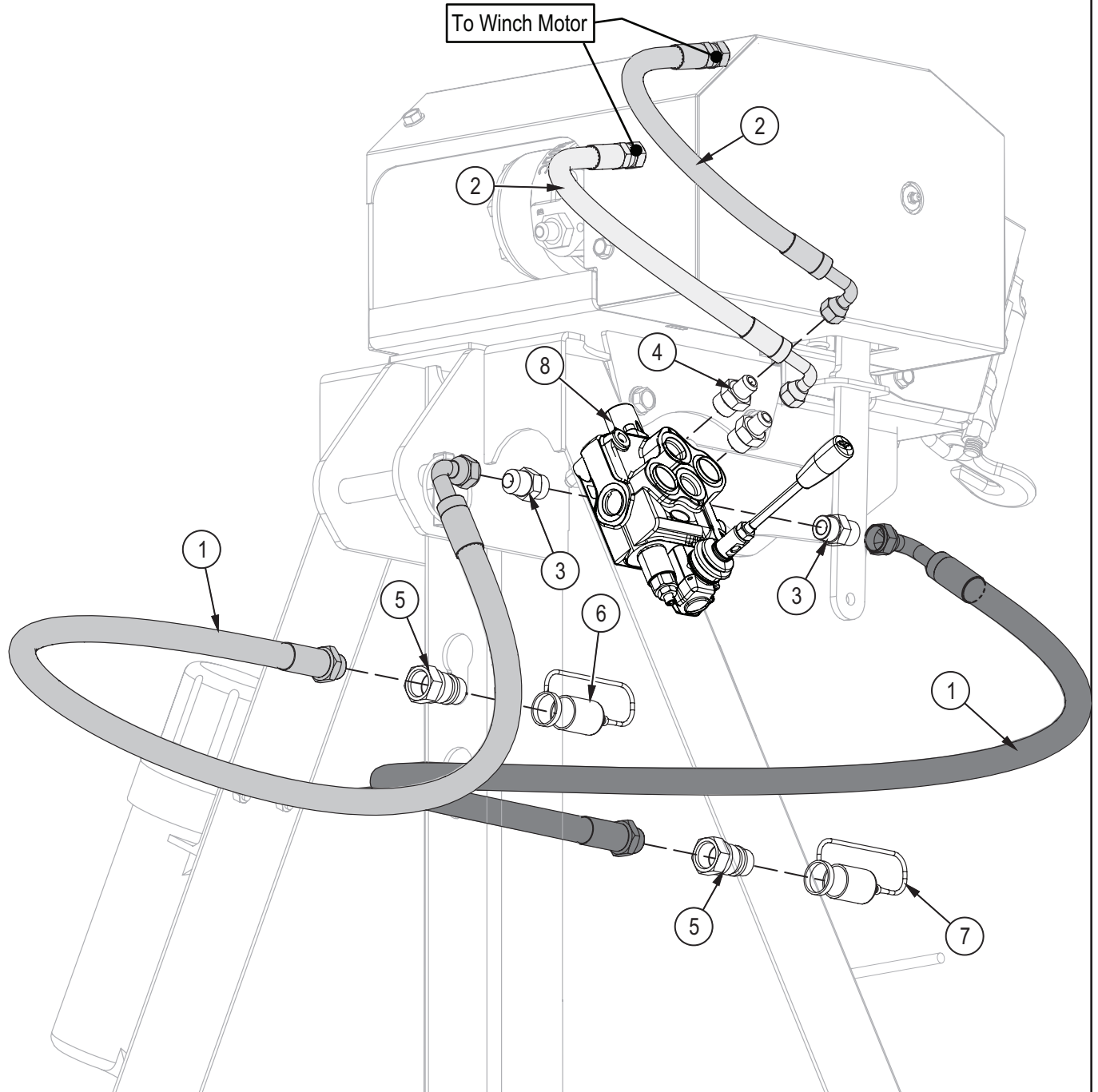
Item No.	Part No.	Description	Qty
1	6083W201	Drum, Main Cable	1
2	6083L207	Washer, Capture	1
3	6083M252	1/2-13 x 1 Bolt Modified	1
4	6083M256	Gear, High	1
5	6083M257	Gear, Low Driven	1
6	Z25207	Bearing Insert, UC206-20	2
7	Z25301	3-Bolt Flange Bearing, PF206 x Flange Only	4
8	Z29202	Grease Fitting, 1/4NF	1
9	Z34302	Spring Plunger, 3/8NC x 5/8" x 21 lbs	1
10	Z46531	Key, 1/4" x 1/4" x 2"	1
11	Z75222	FHCS, 5/16NF x 1"	5
12	Z76133	Flange Bolt, 3/8NC x 3/4"	6
13	Z92118	Synthetic Winch Cable, 5/16" x 80ft with Grab Hook	1

Fairlead Detail



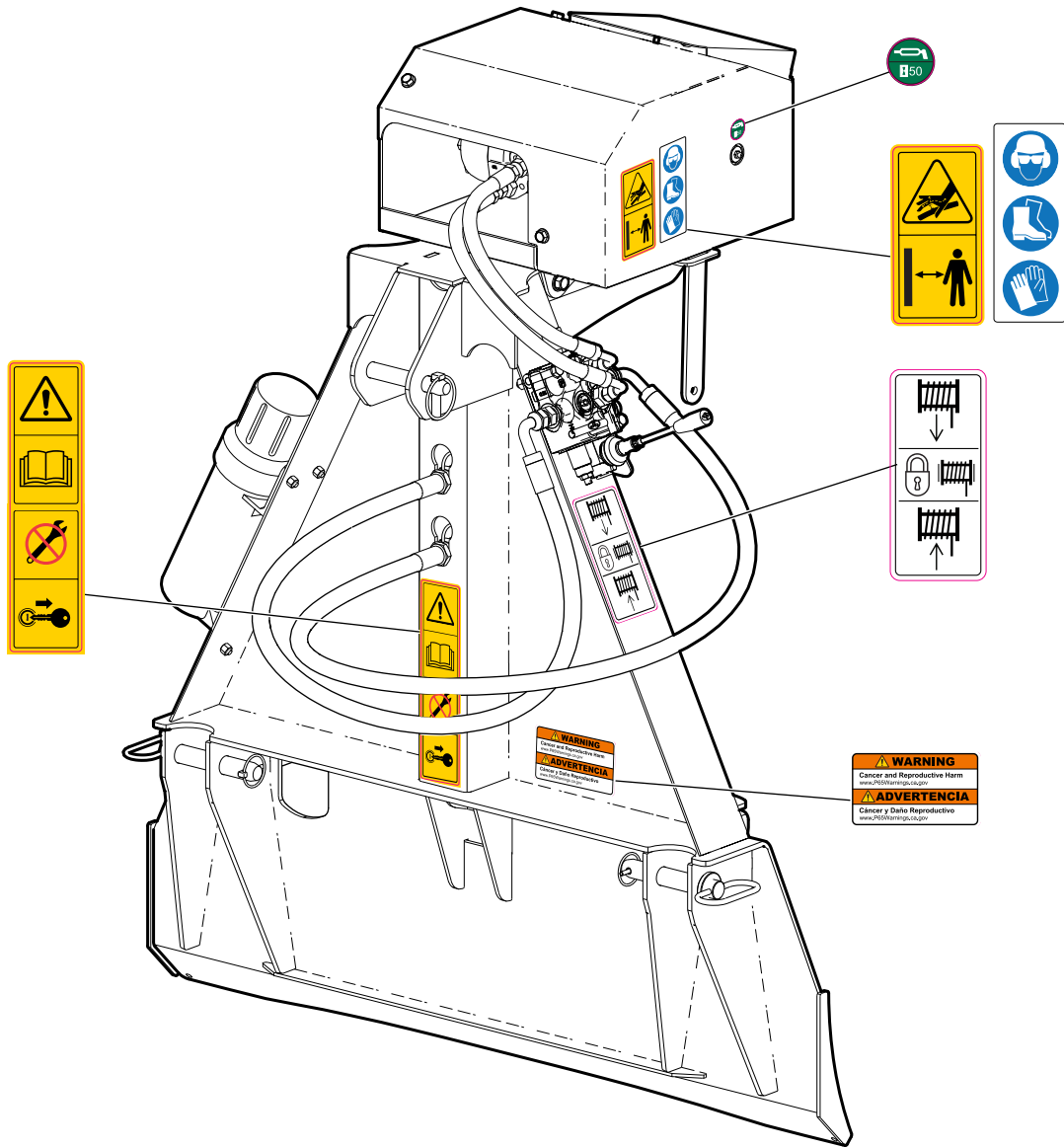
Item No.	Part No.	Description	Qty
1	5081W103	Bracket, Fairlead	1
2	5081M109	Bushing, Fairlead Side	2
3	5081M111	Bushing, Fairlead Top	2
4	Z27103	Fibreglide Bearing, 1/2" ID x 1" long x 1/16" wall	8
5	Z71566	Hex Bolt, 1/2NC x 6-1/4" x 5-1/4" Shank	2
6	Z71567	Hex Bolt, 1/2NC x 5" x 4" Shank	2
7	Z76134	Hex Lock Nut, 1/2NC	4

Hydraulic Plumbing Diagram

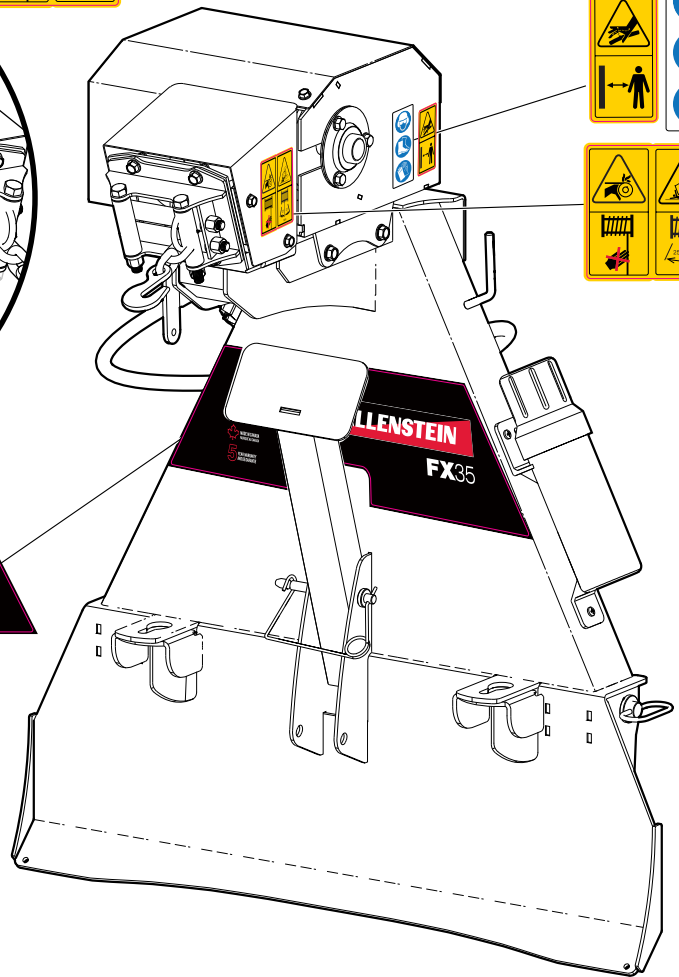
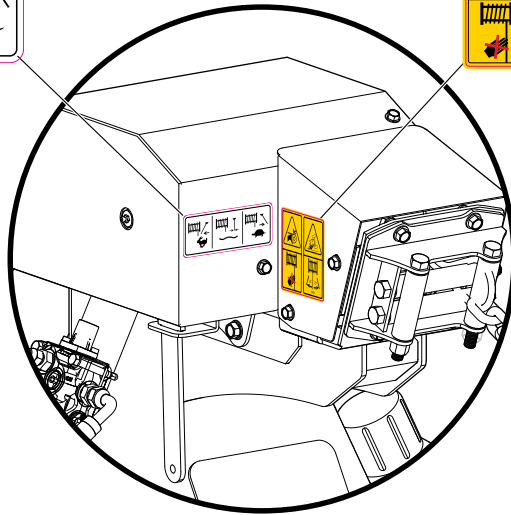
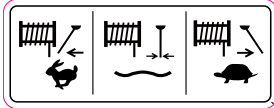


Item No.	Part No.	Description	Qty
1	5016F001	1/2" Hose, 90FJIC08 x MP08 x 48"	2
2	5016F002	3/8" Hose, FJIC06 x 90FJIC06 x 15"	2
3	Z51643	Straight, MJIC x MORB 0808	2
4	Z51644	Straight, MJIC x MORB 0608	2
5	Z51926	Quick Coupler, FP08 x M ISO 7241-1	2
6	Z52831	Nipple Cap, ISO 7241-1 x Red	1
7	Z52832	Nipple Cap, ISO 7241-1 x Black	1
8	Z56216	Single Spool Valve, VC Tandem SC x 12GPM	1

Decal Layout

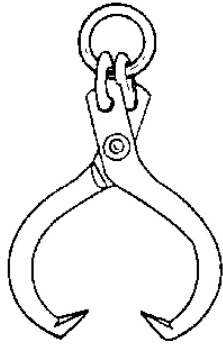


Decal Layout

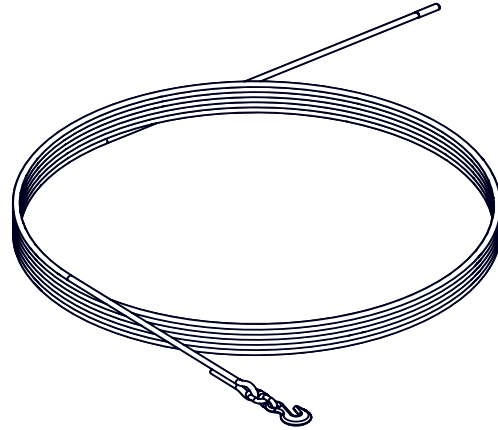


Accessories

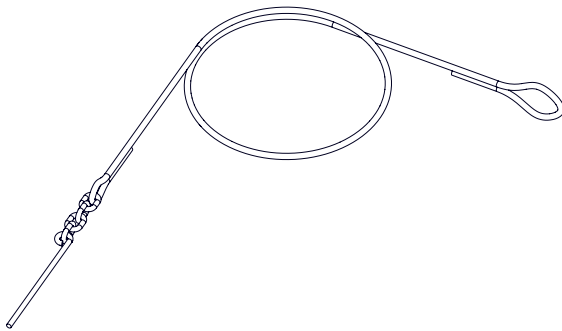
Call your dealer for pricing and availability



Logging Tongs – P/N Z99003



200 ft (61 m) — 7/16" (11 mm) Synthetic Mainline with Hook – P/N Z92123



5 ft (1.5 m) Synthetic Choker with Rod Chain End – P/N Z92125

7 ft (2.1 m) Synthetic Choker with Rod Chain End – P/N Z92126


Common Bolt Torque Values

Checking Bolt Torque

The tables shown give correct torque values for various bolts and capscrews. Tighten all bolts to the torque values specified in the table, unless indicated otherwise. Check tightness of bolts periodically.

IMPORTANT! If replacing hardware, use fasteners of the same grade.

IMPORTANT! Torque figures indicated in the table are for non-greased or non-oiled threads. Do not grease or oil threads unless indicated otherwise. When using a thread locker, increase torque values by 5%.

 **NOTE:** Bolt grades are identified by their head markings.

Imperial Bolt Torque Specifications

Bolt Diameter	Torque Value					
	SAE Gr. 2		SAE Gr. 5		SAE Gr. 8	
	lbf•ft	N•m	lbf•ft	N•m	lbf•ft	N•m
1/4"	6	8	9	12	12	17
5/16"	10	13	19	25	27	36
3/8"	20	27	33	45	45	63
7/16"	30	41	53	72	75	100
1/2"	45	61	80	110	115	155
9/16"	60	95	115	155	165	220
5/8"	95	128	160	215	220	305
3/4"	165	225	290	390	400	540
7/8"	170	230	420	570	650	880
1"	225	345	630	850	970	1320



SAE Gr. 2



SAE Gr. 5



SAE Gr. 8

Metric Bolt Torque Specifications

Bolt Diameter	Torque Value			
	Gr. 8.8		Gr. 10.9	
	lbf•ft	N•m	lbf•ft	N•m
M3	0.4	0.5	1.3	1.8
M4	2.2	3	3.3	4.5
M6	7	10	11	15
M8	18	25	26	35
M10	37	50	52	70
M12	66	90	92	125
M16	166	225	229	310
M20	321	435	450	610
M30	1,103	1 495	1,550	2 100
M36	1,917	2 600	2,700	3 675



8.8



10.9

Hydraulic Fitting Torque Values

Tightening Flare Type Tube Fittings

1. Check flare and flare seat for defects that might cause leakage.
2. Align tube with fitting before tightening.
3. Hand-tighten swivel nut until snug.
4. To prevent twisting the tube, use two wrenches. Place one wrench on the connector body and tighten the swivel nut with the second. Torque to values shown.

If a torque wrench is not available, use the FFFT (Flats From Finger Tight) method.

Hydraulic Fitting Torque					
Tube Size OD	Hex Size Across Flats	Torque value		Flats From Finger Tight	
		lbf·ft	N·m	Flats	Turns
3/16	7/16	6	8	2	1/6
1/4	9/16	11–12	15–17	2	1/6
5/16	5/8	14–16	19–22	2	1/6
3/8	11/16	20–22	27–30	1-1/4	1/6
1/2	7/8	44–48	59–65	1	1/6
5/8	1	50–58	68–79	1	1/6
3/4	1-1/4	79–88	107–119	1	1/8
1	1-5/8	117–125	158–170	1	1/8

Values shown are for non-lubricated connections.