



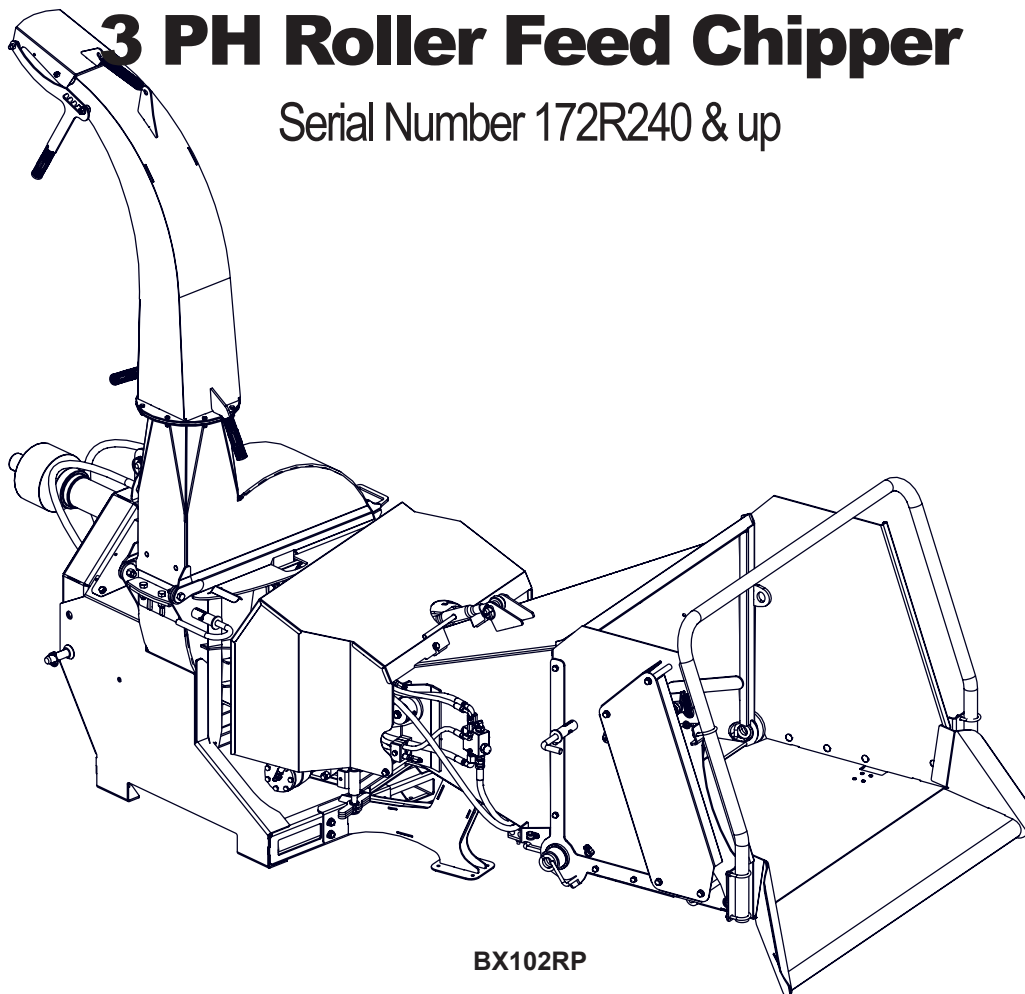
EMB Manufacturing Inc.
4144 Boomer Line · St. Clements, Ontario · N0B 2M0 · Canada
www.wallensteinequipment.com

PARTS MANUAL

BX72R & BX72RI

3 PH Roller Feed Chipper

Serial Number 172R240 & up



BX102RP



Refer to the operators manual for safe operation and maintenance

Contents

BX72 Variation Chart3

Bolt Torque4

Hydraulic Fitting Torque5

PTO Base Assembly6

Rotor Parts7

Discharge Chute Assembly & Guard8

Upper Roller Assembly.....9

Lower Roller Assembly10

Hopper Assembly (top view).....11

Bypass Valve Detail11

Hopper Assembly (bottom view)12

Feed Table Parts13

Roller Valve Detail14

Feed Roller Control Detail14

Intellifeed Roller Control Detail15

Intellifeed Components15

PTO Shaft #Z4450416

Intellifeed Settings17

Intellifeed Wiring Diagram #Z6210918

Hydraulic Hose Parts List19

Hydraulic Schematic BX72R20

Hydraulic Schematic BX72RI21

Labels - Left Side View22

Labels - Right Side View23

Accessories24

 **WARNING!**

Refer to the operators manual for safe operation and maintenance.

Maintenance should be performed by trained personnel only.

Foreword

EMB Manufacturing has prepared this parts manual to assist customers in ordering quality OEM replacement parts.

Regular maintenance, and replacing old, worn or broken parts with the correct OEM parts, is essential in prolonging the life of your EMB product. Please refer to this manual to identify replacement parts.

To order parts, please contact your dealer for further information. If your dealer is no longer available please go to our website: <http://www.wallensteinequipment.com> and click on the [Dealer Locator](#) to find the nearest dealer.

All information contained in this parts manual is current as per the revision date at the bottom of the page. EMB reserves the right to change product specifications at any time without notice.

If your product specifications differ from those contained in this manual, contact EMB Manufacturing for information.

Reproduction of this parts manual of any kind is prohibited without prior written permission from EMB Manufacturing.

BX72 Variation Chart

| BX Option Cross Referance | | | Option | |
|---------------------------|----------|--------|-------------|----------------|
| | | | Intellifeed | Revision Level |
| Model | BX72REU | BX72R | | D1 |
| | BX72RIEU | BX72RI | X | D1 |


Bolt Torque

Checking Bolt Torque

The tables shown give correct torque values for various bolts and capscrews. Tighten all bolts to the torque values specified in the table, unless indicated otherwise. Check tightness of bolts periodically.

IMPORTANT! If replacing hardware, use fasteners of the same grade.

IMPORTANT! Torque figures indicated in the table are for non-greased or non-oiled threads. Do not grease or oil threads unless indicated otherwise. When using a thread locker, increase torque values by 5%.

 **NOTE:** Bolt grades are identified by their head markings.

| Imperial Bolt Torque Specifications | | | | | | |
|-------------------------------------|--------------|-----|-----------|-----|-----------|------|
| Bolt Diameter | Torque Value | | | | | |
| | SAE Gr. 2 | | SAE Gr. 5 | | SAE Gr. 8 | |
| | lbf•ft | N•m | lbf•ft | N•m | lbf•ft | N•m |
| 1/4" | 6 | 8 | 9 | 12 | 12 | 17 |
| 5/16" | 10 | 13 | 19 | 25 | 27 | 36 |
| 3/8" | 20 | 27 | 33 | 45 | 45 | 63 |
| 7/16" | 30 | 41 | 53 | 72 | 75 | 100 |
| 1/2" | 45 | 61 | 80 | 110 | 115 | 155 |
| 9/16" | 60 | 95 | 115 | 155 | 165 | 220 |
| 5/8" | 95 | 128 | 160 | 215 | 220 | 305 |
| 3/4" | 165 | 225 | 290 | 390 | 400 | 540 |
| 7/8" | 170 | 230 | 420 | 570 | 650 | 880 |
| 1" | 225 | 345 | 630 | 850 | 970 | 1320 |



| Metric Bolt Torque Specifications | | | | |
|-----------------------------------|--------------|-------|----------|-------|
| Bolt Diameter | Torque Value | | | |
| | Gr. 8.8 | | Gr. 10.9 | |
| | lbf•ft | N•m | lbf•ft | N•m |
| M3 | 0.4 | 0.5 | 1.3 | 1.8 |
| M4 | 2.2 | 3 | 3.3 | 4.5 |
| M6 | 7 | 10 | 11 | 15 |
| M8 | 18 | 25 | 26 | 35 |
| M10 | 37 | 50 | 52 | 70 |
| M12 | 66 | 90 | 92 | 125 |
| M16 | 166 | 225 | 229 | 310 |
| M20 | 321 | 435 | 450 | 610 |
| M30 | 1,103 | 1 495 | 1,550 | 2 100 |
| M36 | 1,917 | 2 600 | 2,700 | 3 675 |



Hydraulic Fitting Torque

Tightening Flare Type Tube Fittings

1. Check flare and flare seat for defects that might cause leakage.
2. Align tube with fitting before tightening.
3. Hand-tighten swivel nut until snug.
4. To prevent twisting the tube, use two wrenches. Place one wrench on the connector body and tighten the swivel nut with the second. Torque to values shown.

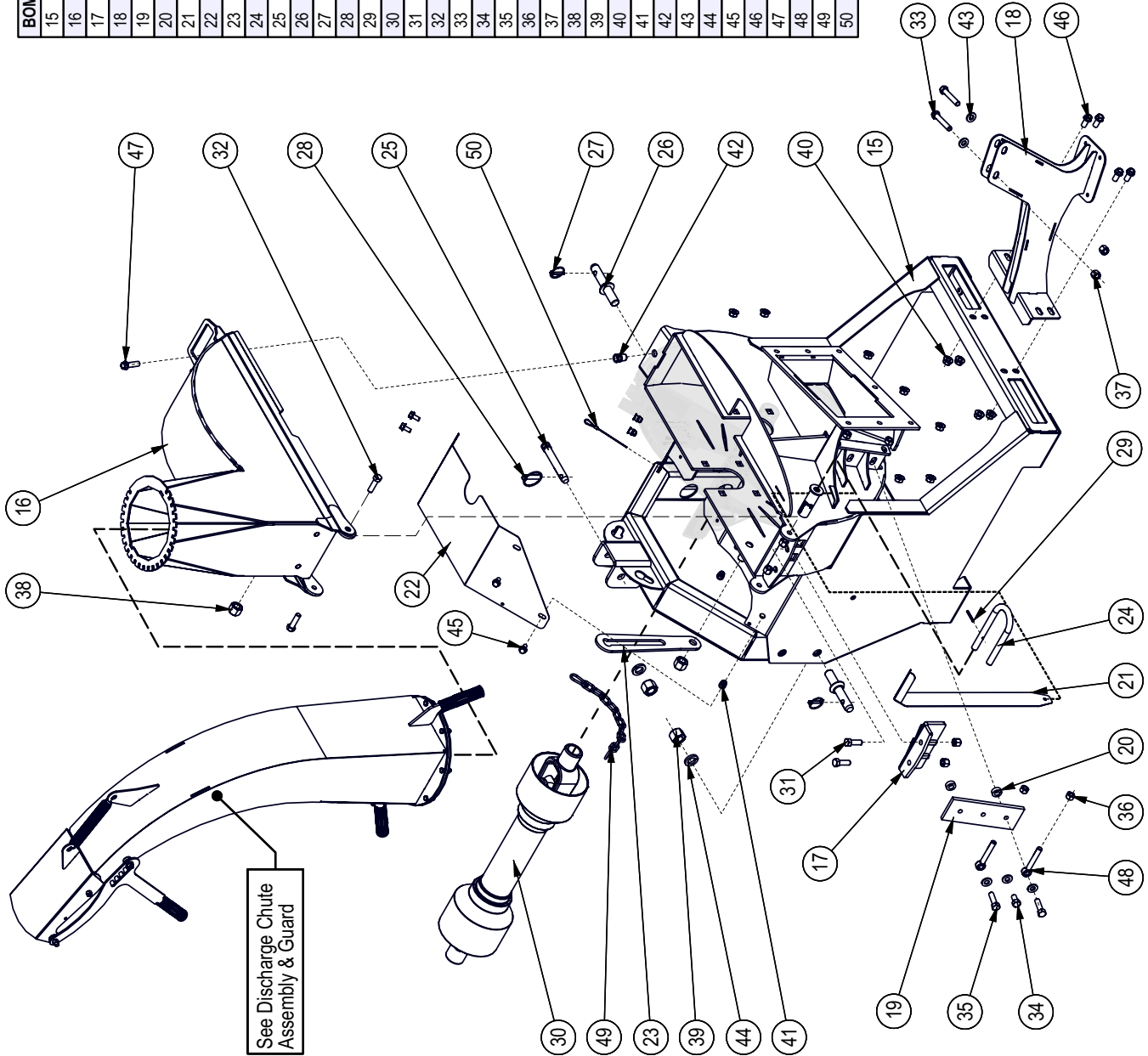
If a torque wrench is not available, use the FFFT (Flats From Finger Tight) method.

| Hydraulic Fitting Torque | | | | | | | |
|--------------------------|-----------------------|--------------|--------|-------------------------|---------|-------|-------|
| Tube Size OD | Hex Size Across Flats | Torque value | | Flats From Finger Tight | | | |
| | | Inches | Inches | lbf·ft | N·m | Flats | Turns |
| 3/16 | 7/16 | | | 6 | 8 | 2 | 1/6 |
| 1/4 | 9/16 | | | 11–12 | 15–17 | 2 | 1/6 |
| 5/16 | 5/8 | | | 14–16 | 19–22 | 2 | 1/6 |
| 3/8 | 11/16 | | | 20–22 | 27–30 | 1-1/4 | 1/6 |
| 1/2 | 7/8 | | | 44–48 | 59–65 | 1 | 1/6 |
| 5/8 | 1 | | | 50–58 | 68–79 | 1 | 1/6 |
| 3/4 | 1-1/4 | | | 79–88 | 107–119 | 1 | 1/8 |
| 1 | 1-5/8 | | | 117–125 | 158–170 | 1 | 1/8 |

Values shown are for non-lubricated connections.

MODELS BX72R, B72RI

| BOM ID | Part No. | Description | Qty |
|--------|----------|---|-----|
| 15 | 1023W102 | Lower Housing Weldment | 1 |
| 16 | 1023W222 | Weldment, Upper Housing | 1 |
| 17 | 1012W204 | Twig Breaker | 1 |
| 18 | 1023W104 | Hopper Support Weldment | 1 |
| 19 | 1012M204 | Knife, BX62 Ledger | 1 |
| 20 | 1023L150 | Ledger Washer | 2 |
| 21 | 1012L269 | Gauge, Ledger Setting | 1 |
| 22 | 1023L153 | PTO Shield | 1 |
| 23 | 1023L155 | Rotation Stop | 1 |
| 24 | 1082M402 | Locking Plunger | 1 |
| 25 | Z11122 | Toplink Pin, 3/4" x 3-7/8" | 1 |
| 26 | Z11431 | Implement Pin, 7/8" x 1-3/4" x 7/8NF | 2 |
| 27 | Z12110 | Lynch Pin, 3/16" | 2 |
| 28 | Z12140 | Lynch Pin, 7/16" | 1 |
| 29 | Z14151 | Roll Pin, 3/16" x 1-1/2" | 1 |
| 30 | Z44504 | PTO Shaft, Series B5 x 30.748" | 1 |
| 31 | Z11515 | Hex Bolt, 1/2NC x 1-1/2" | 2 |
| 32 | Z11517 | Hex Bolt, 1/2NC x 1-3/4" | 2 |
| 33 | Z11527 | Hex Bolt, 1/2NC x 2-3/4" | 2 |
| 34 | Z1152G8 | Hex Bolt, 1/2NF x 7/8" G8 | 1 |
| 35 | Z11579G8 | Hex Bolt, 1/2NF x 1-3/4" G8 | 2 |
| 36 | Z12151 | Hex Nut, 1/2NC | 4 |
| 37 | Z12251 | Hex Lock Nut, 1/2NC | 6 |
| 38 | Z12271 | Hex Lock Nut, 3/4NC | 2 |
| 39 | Z12282 | Hex Lock Nut, 7/8NF | 2 |
| 40 | Z12551 | Serrated Flange Locknut, 1/2NC | 11 |
| 41 | Z12959 | Rivet Nut, 3/8NC x 3/2 | 4 |
| 42 | Z12961 | Rivet Nut, 1/2NC x 3/50 | 1 |
| 43 | Z13151 | SAE Washer, 1/2" | 5 |
| 44 | Z13381 | Split Lock Washer, 7/8" | 2 |
| 45 | Z16133 | Flange Bolt, 3/8NC x 3/4" | 4 |
| 46 | Z16153 | Flange Bolt, 1/2NC x 1" | 4 |
| 47 | Z16155 | Flange Bolt, 1/2NC x 1-3/4" | 1 |
| 48 | Z16553 | Rod End, 1/2NC x 3-1/2" Full Threads | 2 |
| 49 | Z92310 | PTO Support Chain, 3/16" x 1ft with Two Snaps | 1 |
| 50 | Z92110 | Aircraft Cable, 1/16" x 24" | 1 |

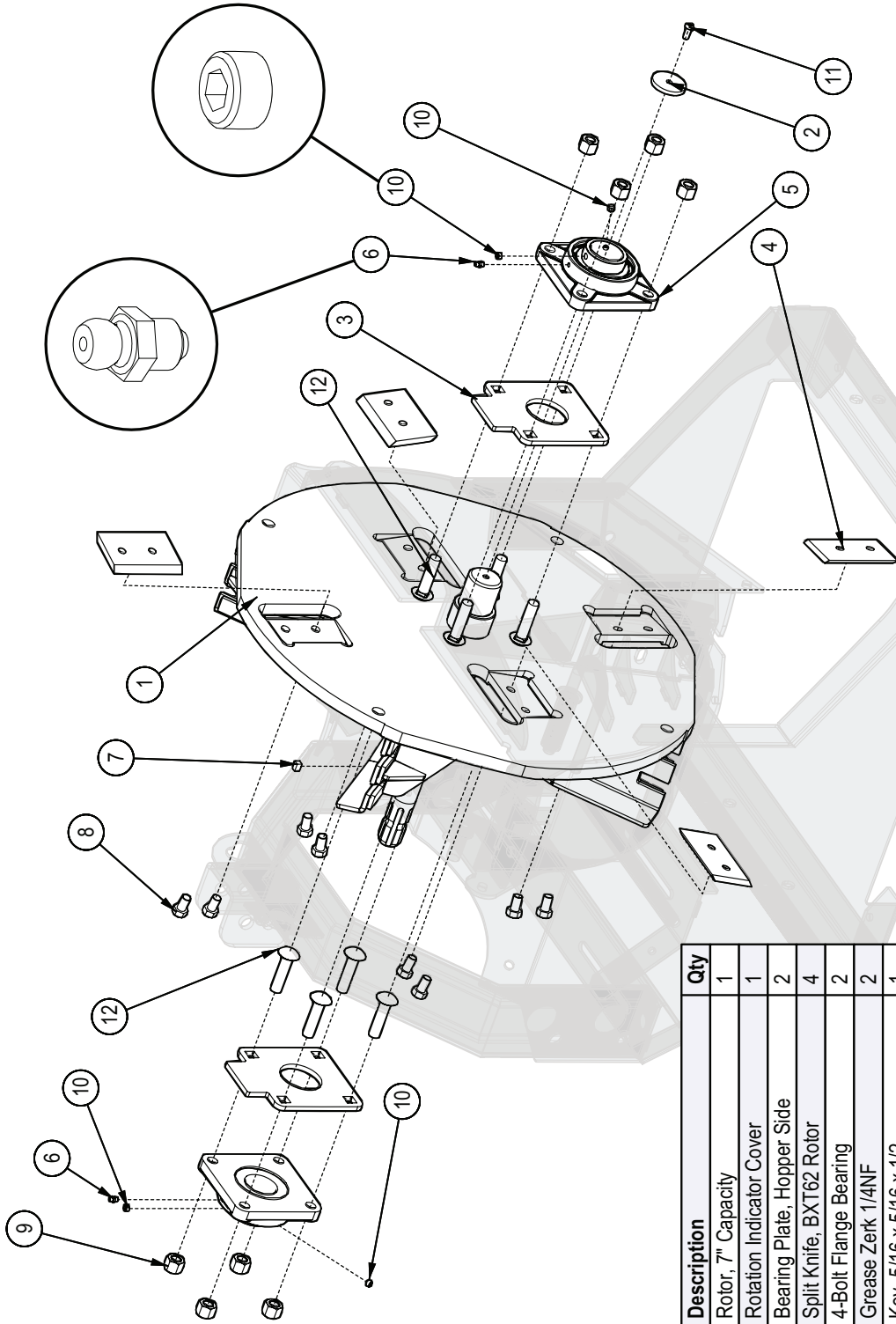


PTO Base Assembly

See Discharge Chute Assembly & Guard

MODELS BX72R, BX72RI

Rotor Parts



It is recommended that the clearance between the rotor and stationary blades be set and maintained at 1/32 to 1/16 " (.76 - 1.52 mm) to obtain the best performance.

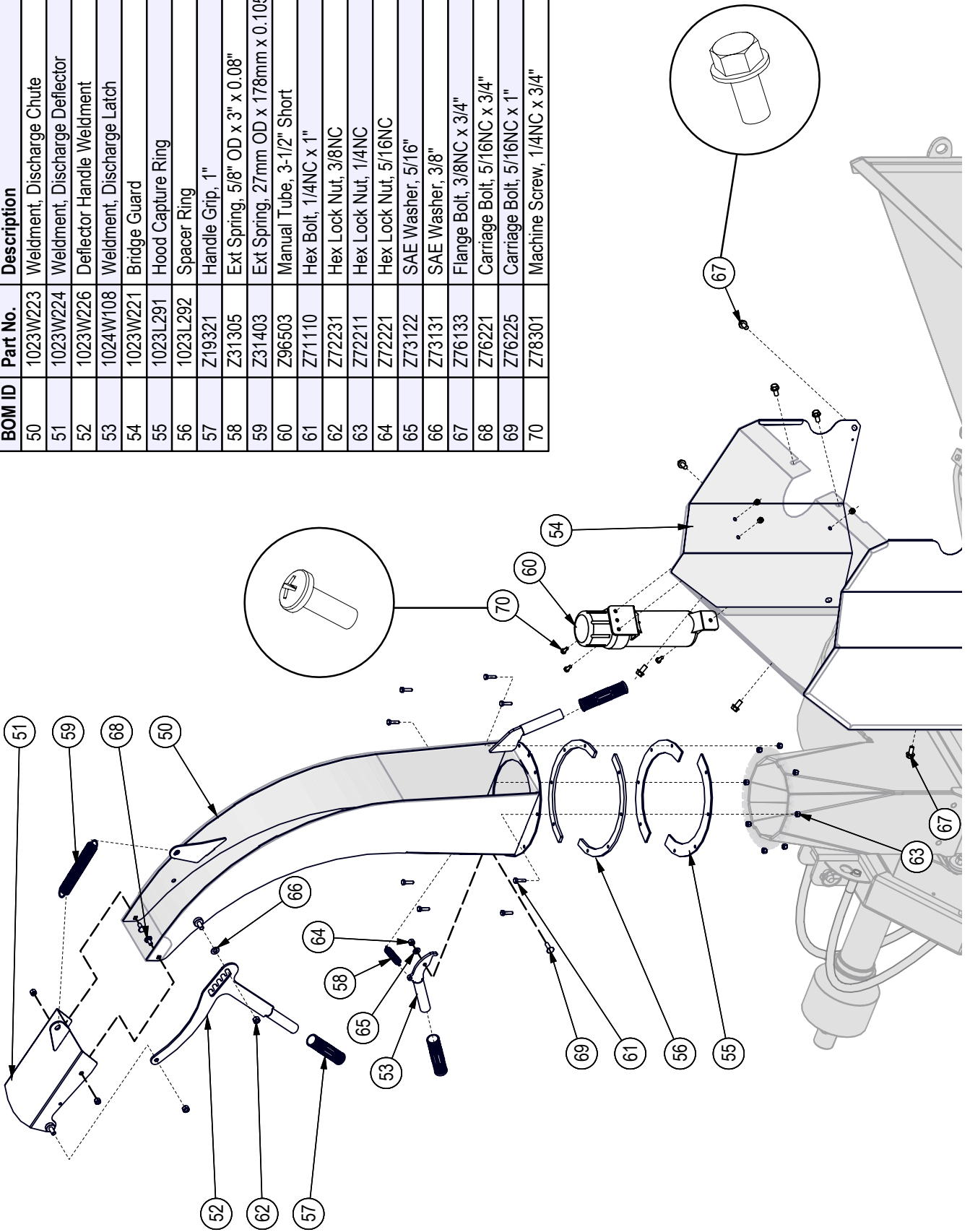
| BOM ID | Description | Qty |
|--------|---|-----|
| 1 | 1023W101 Rotor, 7" Capacity | 1 |
| 2 | 1021S102 Rotation Indicator Cover | 1 |
| 3 | 1023L145 Bearing Plate, Hopper Side | 2 |
| 4 | 1053M303 Split Knife, BXT62 Rotor | 4 |
| 5 | Z25203 4-Bolt Flange Bearing | 2 |
| 6 | Z29202 Grease Zerk 1/4NF | 2 |
| 7 | Z46545 Key, 5/16 x 5/16 x 1/2 | 1 |
| 8 | Z71572G8 Hex Bolt, 1/2NF x 7/8 Gr8 | 8 |
| 9 | Z72261G8 Hex Lock Nut, 5/8NC Grade 8 | 8 |
| 10 | Z74132 Set Screw, 3/8NF | 4 |
| 11 | Z75351 BHCS, 5/16NF x 3/4 | 1 |
| 12 | Z76264G8 Carriage Bolt, 5/8NC x 2-1/2 Grade 8 | 8 |

ECN0390

MODELS BX72R, BX7RI

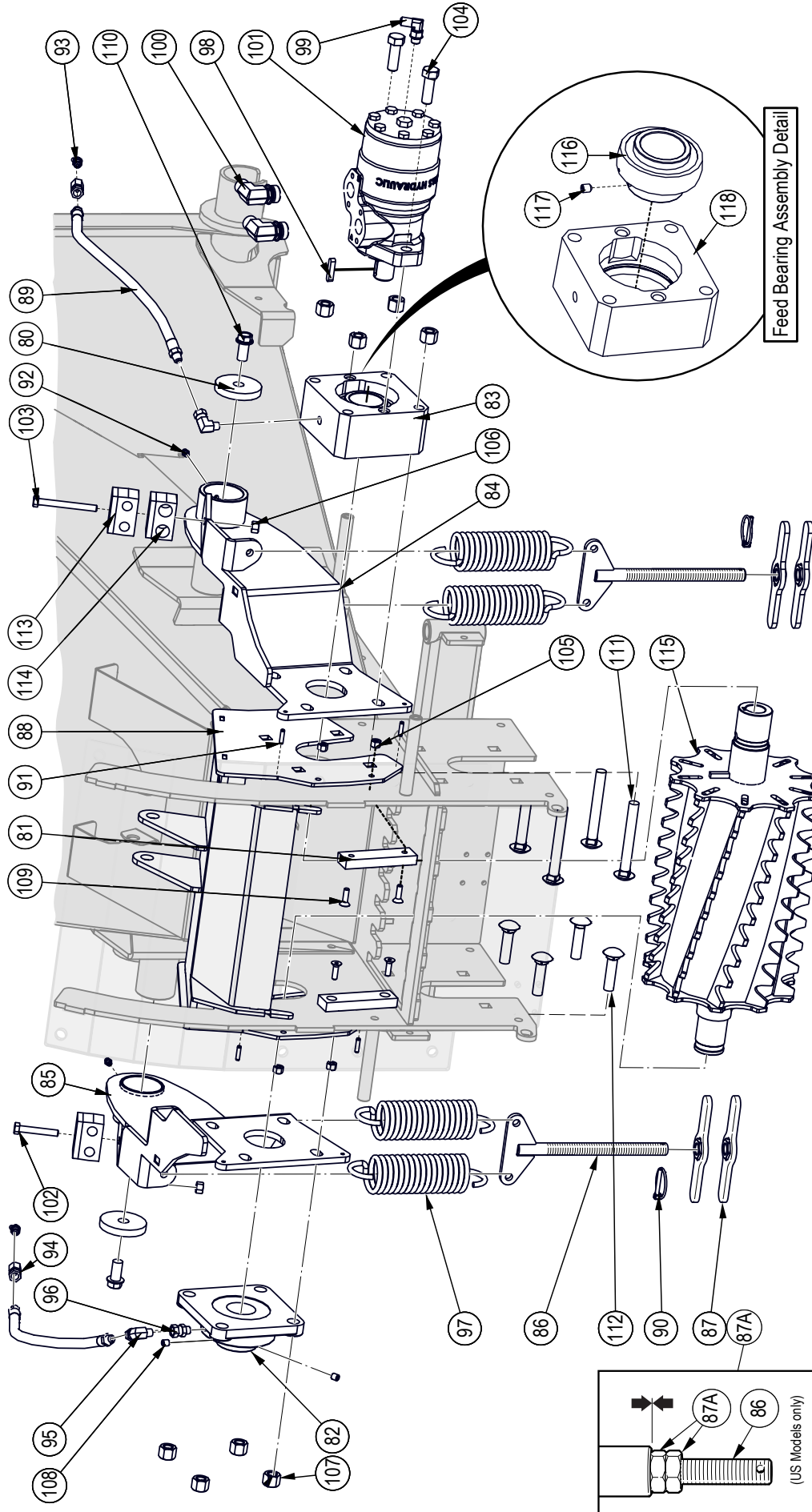
Discharge Chute Assembly & Guard

| BOM ID | Part No. | Description | Qty |
|--------|----------|--------------------------------------|-----|
| 50 | 1023W223 | Weldment, Discharge Chute | 1 |
| 51 | 1023W224 | Weldment, Discharge Deflector | 1 |
| 52 | 1023W226 | Deflector Handle Weldment | 1 |
| 53 | 1024W108 | Weldment, Discharge Latch | 1 |
| 54 | 1023W221 | Bridge Guard | 1 |
| 55 | 1023L291 | Hood Capture Ring | 2 |
| 56 | 1023L292 | Spacer Ring | 2 |
| 57 | Z19321 | Handle Grip, 1" | 3 |
| 58 | Z31305 | Ext Spring, 5/8" OD x 3" x 0.08" | 1 |
| 59 | Z31403 | Ext Spring, 27mm OD x 178mm x 0.105" | 1 |
| 60 | Z96503 | Manual Tube, 3-1/2" Short | 1 |
| 61 | Z71110 | Hex Bolt, 1/4NC x 1" | 8 |
| 62 | Z72231 | Hex Lock Nut, 3/8NC | 2 |
| 63 | Z72211 | Hex Lock Nut, 1/4NC | 11 |
| 64 | Z72221 | Hex Lock Nut, 5/16NC | 3 |
| 65 | Z73122 | SAE Washer, 5/16" | 1 |
| 66 | Z73131 | SAE Washer, 3/8" | 1 |
| 67 | Z76133 | Flange Bolt, 3/8NC x 3/4" | 8 |
| 68 | Z76221 | Carriage Bolt, 5/16NC x 3/4" | 2 |
| 69 | Z76225 | Carriage Bolt, 5/16NC x 1" | 1 |
| 70 | Z78301 | Machine Screw, 1/4NC x 3/4" | 3 |



MODELS BX72R, BX72RI

Upper Roller Assembly



Feed Bearing Assembly Detail

* Seal Kit SKMLHP-U/DE

| BOM ID | Part No. | Description | Qty |
|--------|----------|---------------------------------|-----|
| 110 | Z76153 | Flange Bolt, 1/2NC x 1" | 2 |
| 111 | Z762311 | Carriage Bolt, 1/2NC x 4" | 4 |
| 112 | Z76255 | Carriage Bolt, 1/2NC x 2" | 4 |
| 113 | Z79462 | Double Hose Clamp, 1.2" OD | 2 |
| 114 | Z79463 | Double Hose Clamp, 1.176" OD | 1 |
| 115 | 1023W227 | BX72R Upper Feed Roller, Spiral | 1 |
| 116 | Z741903 | Ball Bearing, UC209-28 x Insert | 1 |
| 117 | Z741722 | Set Screw, 5/16NF x 3/8" | 1 |
| 118 | 1022M218 | UC Motor Bearing Housing | 1 |

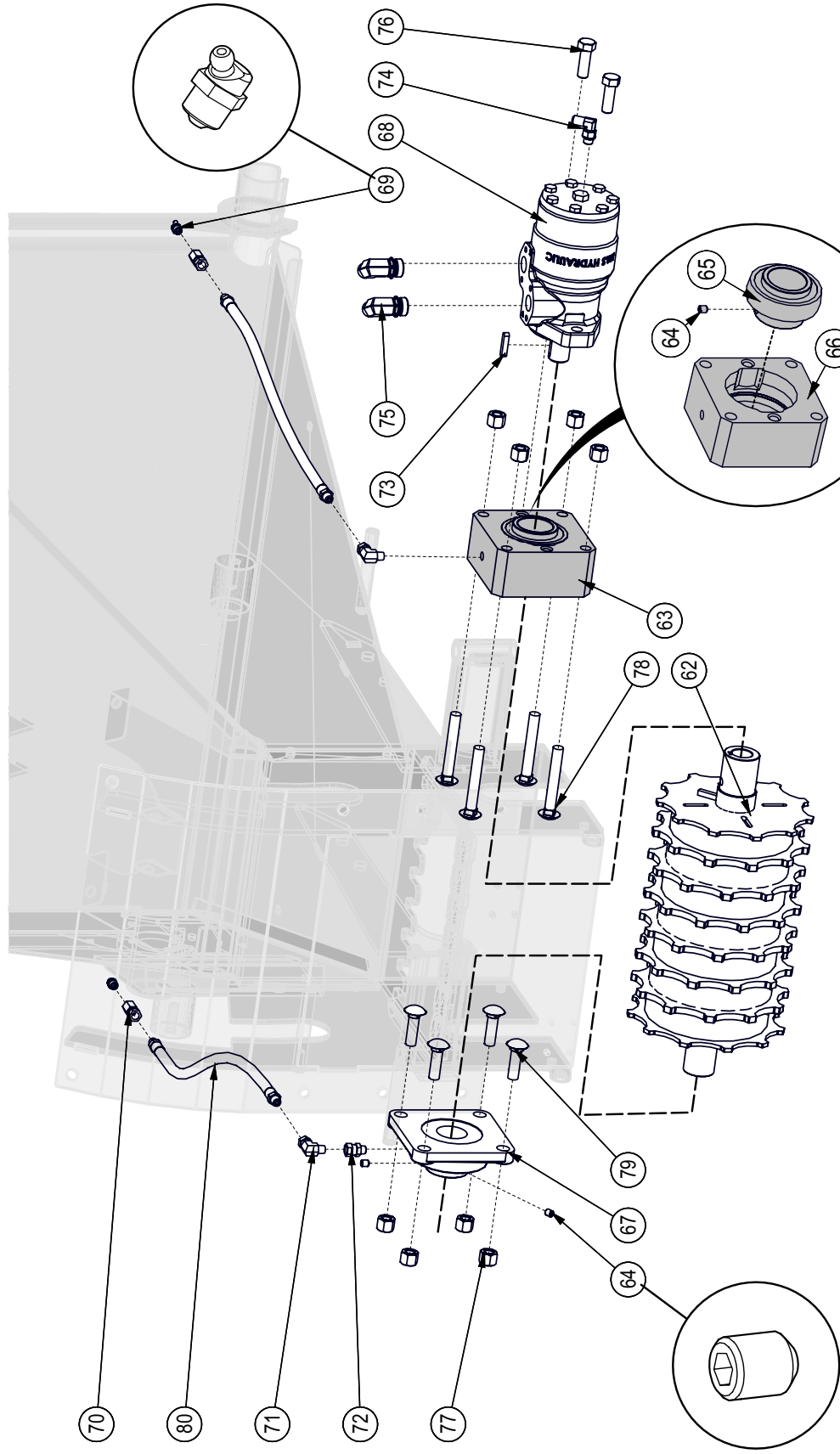
| Item | Part No. | Description | Qty |
|------|----------|----------------------------|-----|
| 100 | Z51658 | Elbow 90, MJIC x MORB 0810 | 2 |
| 101 | Z54104 | Hydraulic Motor, 315CCR * | 1 |
| 102 | Z71220 | Hex Bolt, 5/16NC x 2" | 1 |
| 103 | Z71230 | Hex Bolt, 5/16NC x 3" | 1 |
| 104 | Z71515 | Hex Bolt, 1/2NC x 1-1/2" | 2 |
| 105 | Z72211 | Hex Lock Nut, 1/4NC | 4 |
| 106 | Z72221 | Hex Lock Nut, 1/2NC | 2 |
| 107 | Z74122 | Set Screw, 5/16NF x 3/8" | 8 |
| 108 | Z74122 | Set Screw, 5/16NF x 3/8" | 2 |
| 109 | Z75211 | FHCS, 1/4NC x 7/8" | 4 |

| Item | Part No. | Description | Qty |
|------|----------|---|-----|
| 90 | Z12110 | Lynch Pin, 3/16" | 2 |
| 91 | Z14152 | Roll Pin, 3/16" x 3/4" | 4 |
| 92 | Z29202 | Grease Filling, 1/4NF | 2 |
| 93 | Z29204 | Elbow 45 Grease Filling, MP02 | 2 |
| 94 | Z29302 | Grease Filling, FP x FPX 0202 | 2 |
| 95 | Z29307 | Elbow 90 Grease Filling, MP x FPX 0202 | 2 |
| 96 | Z29311 | Grease Filling, MP x FPX 0202 | 1 |
| 97 | Z31501 | Ext Spring, 2" OD x 7" x 0.250" | 4 |
| 98 | Z46594 | Blind Chipper Key, 1/4" x 1/4" x 1-1/4" | 1 |
| 99 | Z51657 | Elbow 90, MJIC x MORB 0404 | 1 |

| Item | Part No. | Description | Qty |
|------|-----------|--------------------------------------|-----|
| 80 | 1015L618 | Capture Washer | 2 |
| 81 | 1023S208 | Rotor Hood Slide | 2 |
| 82 | Z29204 | 4-Bolt Flange Bearing, UCF208-24 | 1 |
| 83 | 1022A205 | Feed Bearing Assembly | 1 |
| 84 | 1023W202 | Weldment, Roller Pivot Arm LH | 1 |
| 85 | 1023W202H | Weldment, Roller Pivot Arm RH | 1 |
| 86 | 1022W206 | Spring Yoke | 2 |
| 87 | 1022W220 | Nut Handle | 4 |
| 87A | Z72361 | Jam Nut, 5/8"NC (on US Models only) | 4 |
| 88 | 1061W168 | Bridge, Guarded | 1 |
| 89 | 1023F-112 | 1/4" Grease Whip, MP02 x MP02 x 1.3" | 2 |

MODELS BX72R, B72RI

Lower Roller Assembly



Feed Bearing Assembly Detail

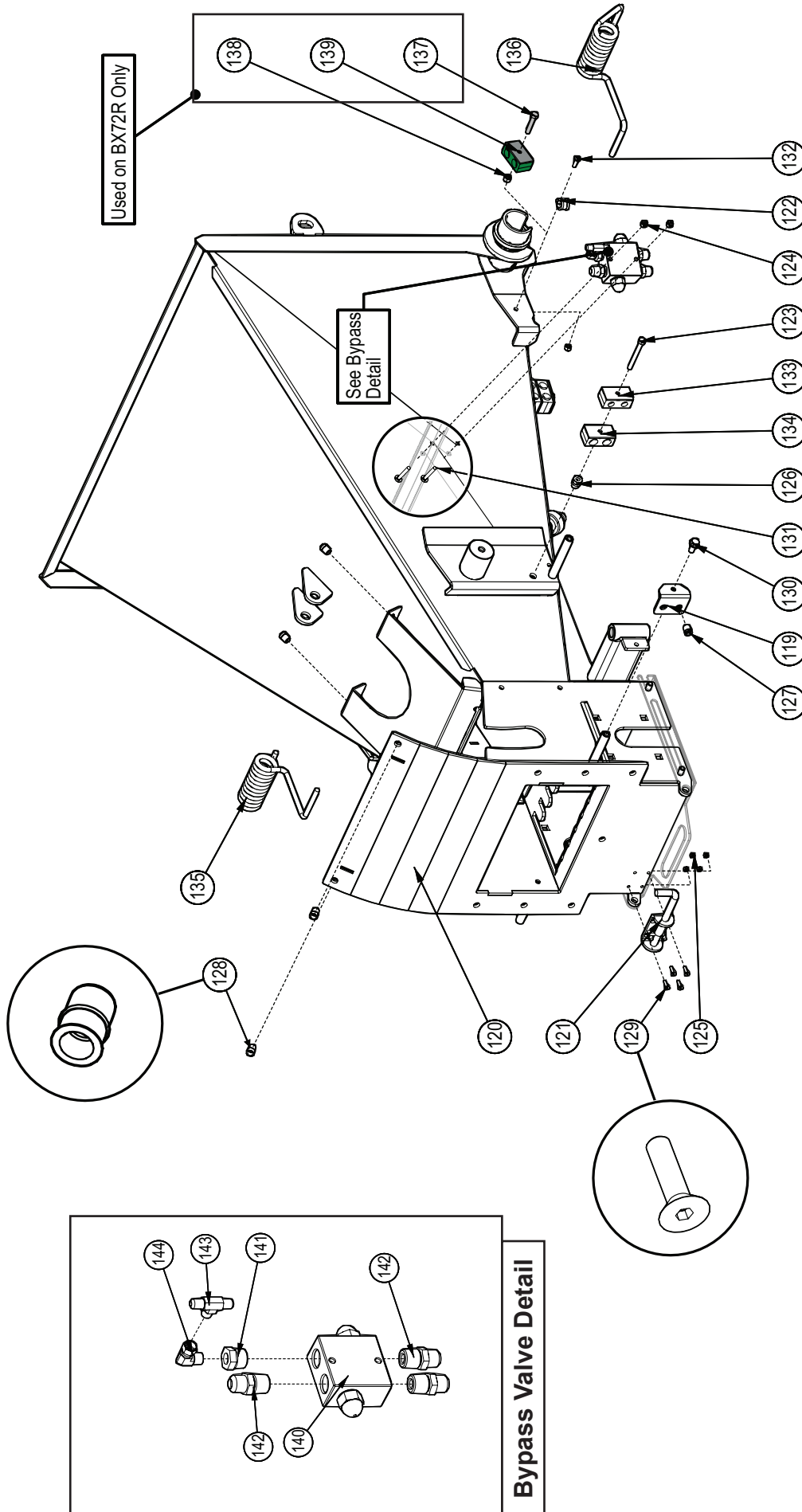
| BOM ID | Part No. | Description | Qty |
|--------|----------|-------------------------------------|-----|
| 76 | Z71515 | Hex Bolt, 1/2NC x 1-1/2" | 2 |
| 77 | Z72251 | Hex Lock Nut, 1/2NC | 8 |
| 78 | Z762510 | Carriage Bolt, 1/2NC x 3-1/2" | 4 |
| 79 | Z76258 | Carriage Bolt, 1/2NC x 1-3/4" | 4 |
| 80 | 1023F113 | 1/4" Grease Whip, MP02 x MP02 x 16" | 2 |

* Seal Kit SKMLHP-U/DE

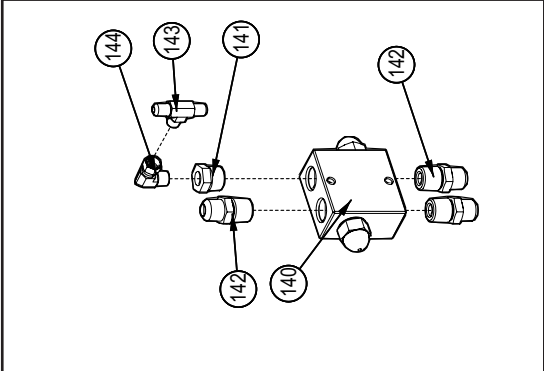
| BOM ID | Part No. | Description | Qty |
|--------|----------|---|-----|
| 69 | Z29204 | Elbow 45 Grease Fitting, MP02 | 2 |
| 70 | Z29302 | Grease Fitting, FP x FFX 0202 | 2 |
| 71 | Z29307 | Elbow 90 Grease Fitting, MP x FFX 0202 | 2 |
| 72 | Z29311 | Grease Fitting, MP x FFX 0202 | 1 |
| 73 | Z46594 | Blind Chipper Key, 1/4" x 1/4" x 1-1/4" | 1 |
| 74 | Z51657 | Elbow 90, MJIC x MORB 0404 | 1 |
| 75 | Z51658 | Elbow 90, MJIC x MORB 0810 | 2 |

| BOM ID | Part No. | Description | Qty |
|--------|----------|----------------------------------|-----|
| 62 | 1023W205 | Lower Feed Roll | 1 |
| 63 | 1022A205 | Feed Bearing Assembly | 1 |
| 64 | Z74122 | Set Screw, 5/16NF x 3/8" | 3 |
| 65 | Z21903 | Ball Bearing, UC209-28 x Insert | 1 |
| 66 | 1022M218 | UC Motor Bearing Housing | 1 |
| 67 | Z25204 | 4-Bolt Flange Bearing, UCF208-24 | 1 |
| 68 | Z54104 | Hydraulic Motor, 315CCR * | 1 |

Hopper Assembly (top view)



Bypass Valve Detail



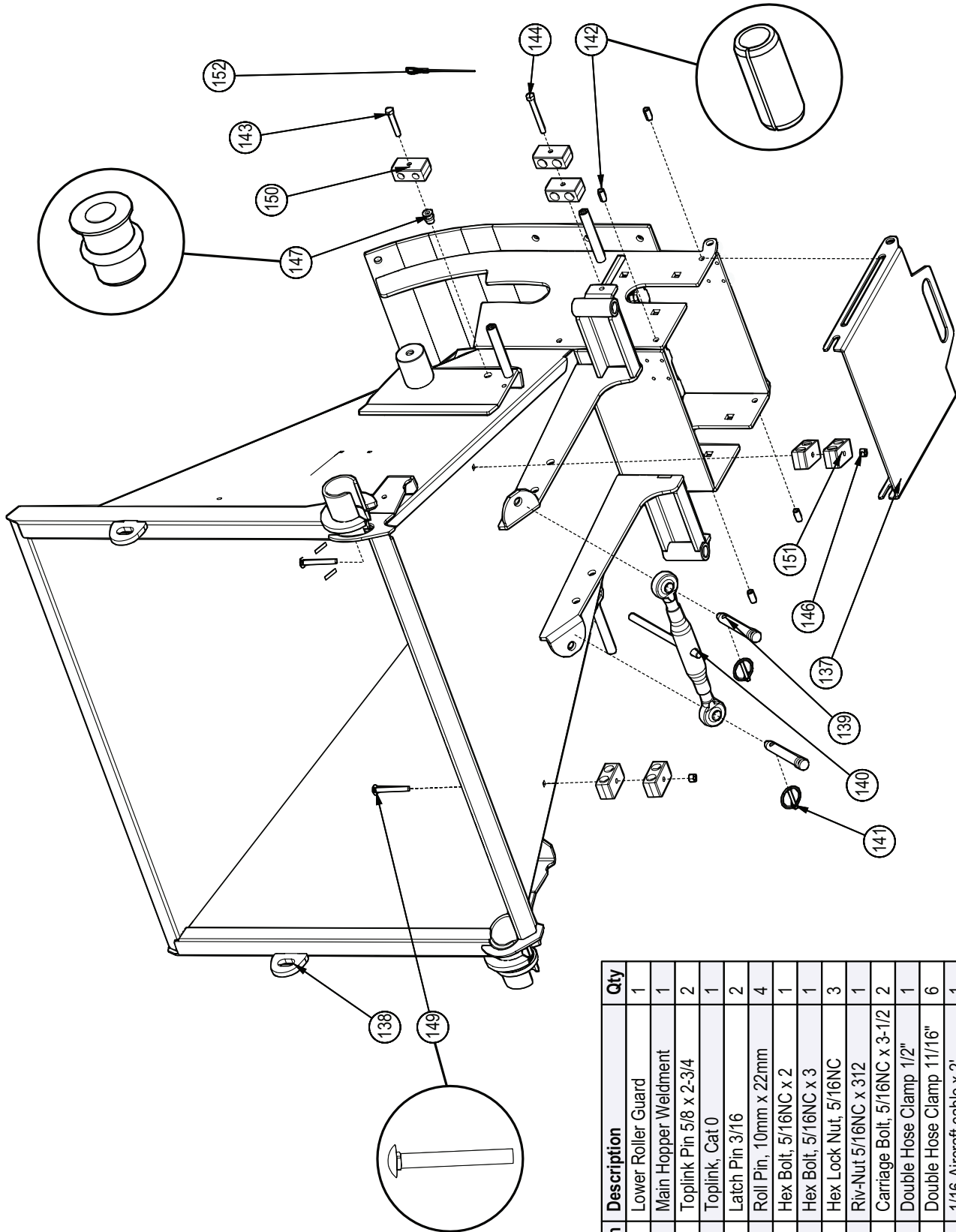
| BOM ID | Description | Description | Qty |
|--------|-------------|-------------------------------|-----|
| 137 | Z71217 | Hex Bolt, 5/16NC x 1-3/4 | 1 |
| 138 | Z72221 | Hex Lock Nut, 5/16NC | 1 |
| 139 | Z79463 | Double Hose Clamp 11/16" | 1 |
| 140 | Z56401 | Crossover Relief Valve | 1 |
| 141 | Z51442 | #8 JIC x 1/2NPT | 3 |
| 142 | Z51488 | Tee MJIC x MJIC x MJIC 040404 | 1 |
| 143 | Z51522 | Elbow 90 MP x FJICX 0404 | 1 |

| BOM ID | Description | Description | Qty |
|--------|-------------|---|-----|
| 128 | Z72959 | Riv-Nut 3/8NC x 3/12 | 2 |
| 129 | Z75203 | FHCS, #10-32NF x 3/4 | 4 |
| 130 | Z76133 | Flange Bolt, 3/8NC x 3/4 | 1 |
| 131 | Z76213 | Carriage Bolt, 1/4NC x 2 | 2 |
| 132 | Z78301 | Machine Screw, 1/4-20NC x 3/4 | 1 |
| 133 | Z79462 | Double Hose Clamp 1/2" | 1 |
| 134 | Z79463 | Double Hose Clamp 11/16" | 1 |
| 135 | Z33301 | Torsion Spring 3/8wire x 2 O.D. x 5" RH | 1 |
| 136 | Z33302 | Torsion Spring 3/8wire x 2 O.D. x 5" LH | 1 |

| BOM ID | Description | Description | Qty |
|--------|-------------|----------------------------------|-----|
| 119 | 1023L300 | Bridge Guard Mount | 1 |
| 120 | 1023W201 | Main Hopper Weldment | 1 |
| 121 | Z18207 | Spring Latch Pin 1/2 x 1" Stroke | 1 |
| 122 | Z62819 | Rubberized Wire Clamp, 1/2" | 1 |
| 123 | Z71230 | Hex Bolt, 5/16NC x 3 | 1 |
| 124 | Z72211 | Hex Lock Nut, 1/4NC | 3 |
| 125 | Z72752 | Machine Nut, #10-32NF | 4 |
| 126 | Z72957 | Riv-Nut 5/16NC x 3/12 | 1 |
| 127 | Z72958 | Riv-Nut 3/8NC x 150 | 3 |

MODELS BX72R, B72RI

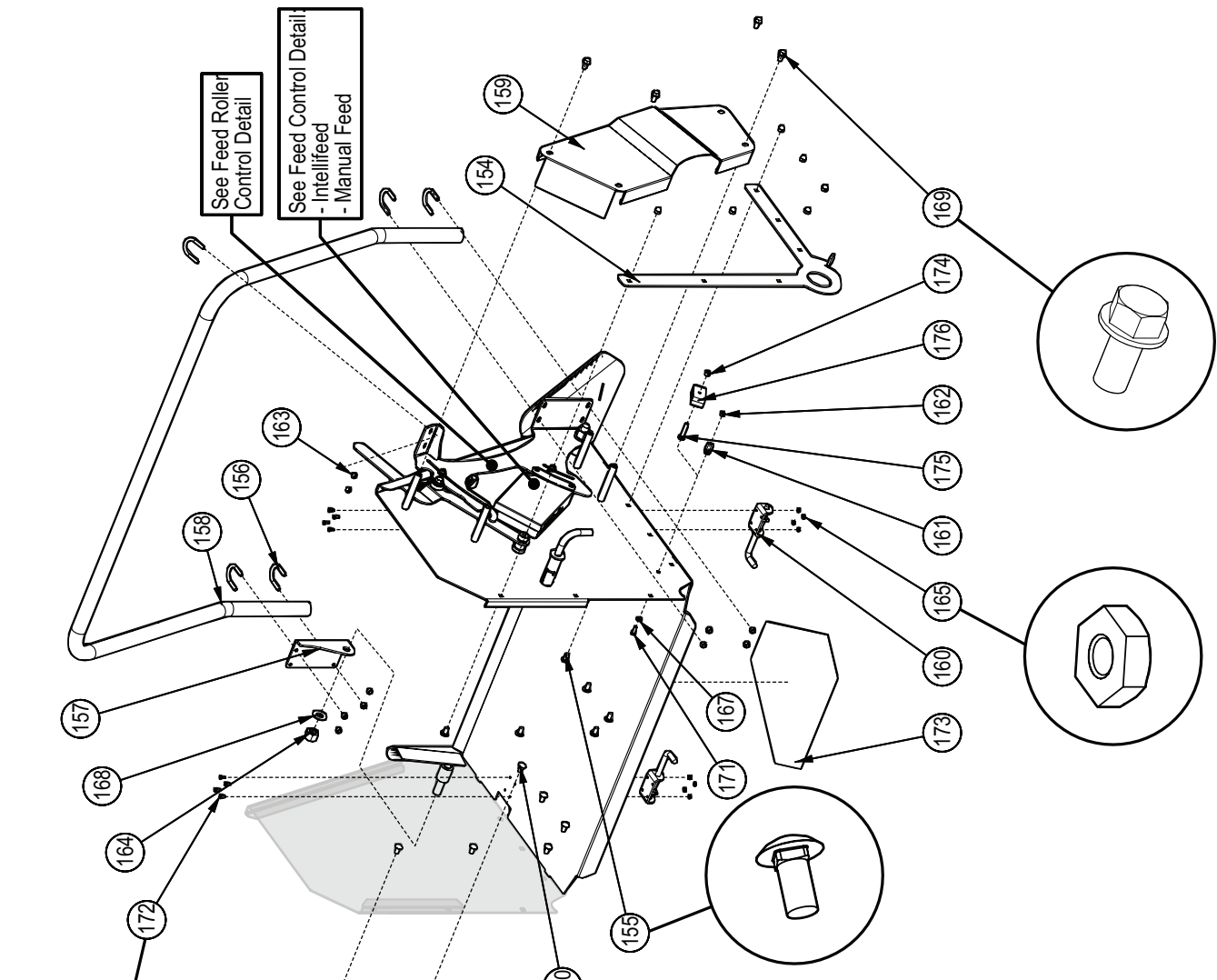
Hopper Assembly (bottom view)



| BOM ID | Description | Description | Qty |
|--------|-------------|-------------------------------|-----|
| 137 | 1023L280 | Lower Roller Guard | 1 |
| 138 | 1023W201 | Main Hopper Weldment | 1 |
| 139 | Z11111 | Toplink Pin 5/8 x 2-3/4 | 2 |
| 140 | Z11501 | Toplink, Cat 0 | 1 |
| 141 | Z12110 | Latch Pin 3/16 | 2 |
| 142 | Z14301 | Roll Pin, 10mm x 22mm | 4 |
| 143 | Z17220 | Hex Bolt, 5/16NC x 2 | 1 |
| 144 | Z171230 | Hex Bolt, 5/16NC x 3 | 1 |
| 146 | Z172221 | Hex Lock Nut, 5/16NC | 3 |
| 147 | Z172957 | Riv-Nut 5/16NC x 312 | 1 |
| 149 | Z176229 | Carriage Bolt, 5/16NC x 3-1/2 | 2 |
| 150 | Z179462 | Double Hose Clamp 1/2" | 1 |
| 151 | Z179463 | Double Hose Clamp 11/16" | 6 |
| 152 | Z192110 | 1/16 Aircraft cable x 2' | 1 |

MODELS BX72R, B72RI

Feed Table Parts

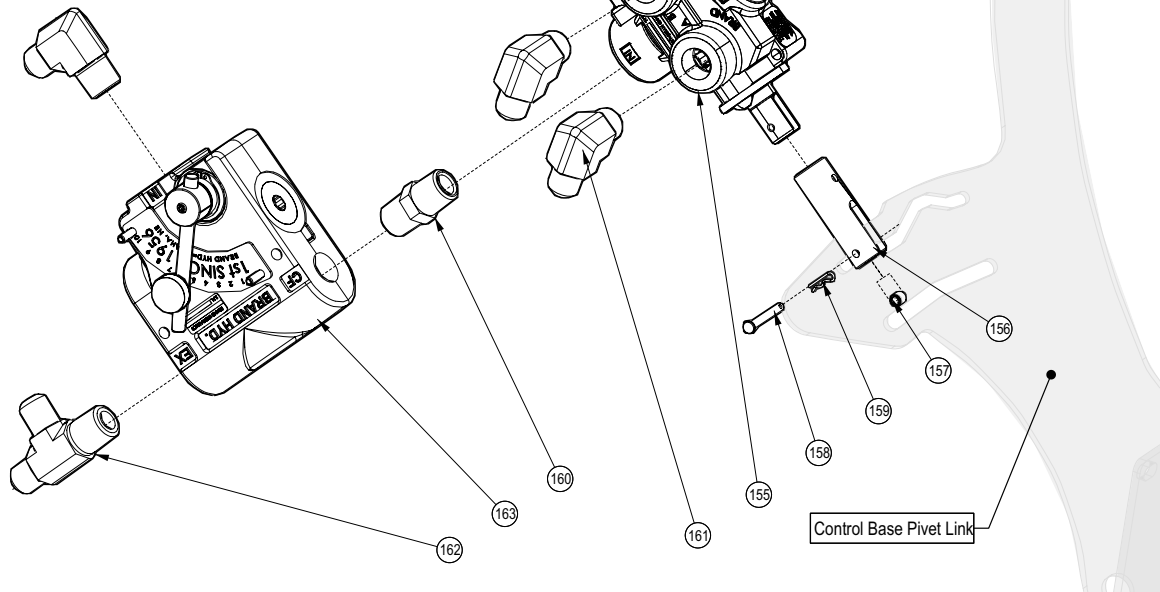


| BOM ID | Description | Description | Qty |
|--------|-------------|----------------------------------|-----|
| 153 | 1022W230 | Feed Table Trap Plate Weldment | 1 |
| 154 | 1022W230H | Feed Table Trap Weldment, LH | 1 |
| 155 | 1023W204 | Feed Table Weldment | 1 |
| 156 | 1015S538 | U-bolt, Bearing Adapter | 5 |
| 157 | 1022L271 | Feed Control Pivot | 1 |
| 158 | 1023S203 | Feed Control Handle | 1 |
| 159 | 1022L256 | Valve Guard | 1 |
| 160 | Z18207 | Spring Latch Pin 1/2 x 1" Stroke | 2 |
| 161 | Z62819 | Rubberized Wire Clamp, 1/2" | 1 |
| 162 | Z72211 | Hex Lock Nut, 1/4NC | 1 |
| 163 | Z72521 | Serrated Flange Locknut, 5/16NC | 10 |
| 164 | Z72271 | Hex Lock Nut, 3/4NC | 1 |
| 165 | Z72204 | Hex Lock Nut, #10NF | 8 |
| 166 | Z72911 | Acorn Nut, 3/8NC | 12 |
| 167 | Z73111 | Flat Washer, 1/4 | 1 |
| 168 | Z73171 | Flat Washer, 3/4" | 1 |
| 169 | Z76133 | Flange Bolt, 3/8NC x 3/4 | 4 |
| 170 | Z76233 | Carriage Bolt, 3/8NC x 3/4 | 12 |
| 171 | Z78301 | Machine Screw, 1/4-20NC x 3/4 | 1 |
| 172 | Z78316 | Machine Screw, #10NF x 3/4 | 8 |
| 173 | Z94601 | Decal, SMV | 1 |
| 174 | Z72221 | Hex Lock Nut, 5/16NC | 1 |
| 175 | Z76227 | Carriage Bolt, 5/16NC x 1-3/4 | 1 |
| 176 | Z79463 | Double Hose Clamp 1 1/16" | 1 |

Roller Valve Detail

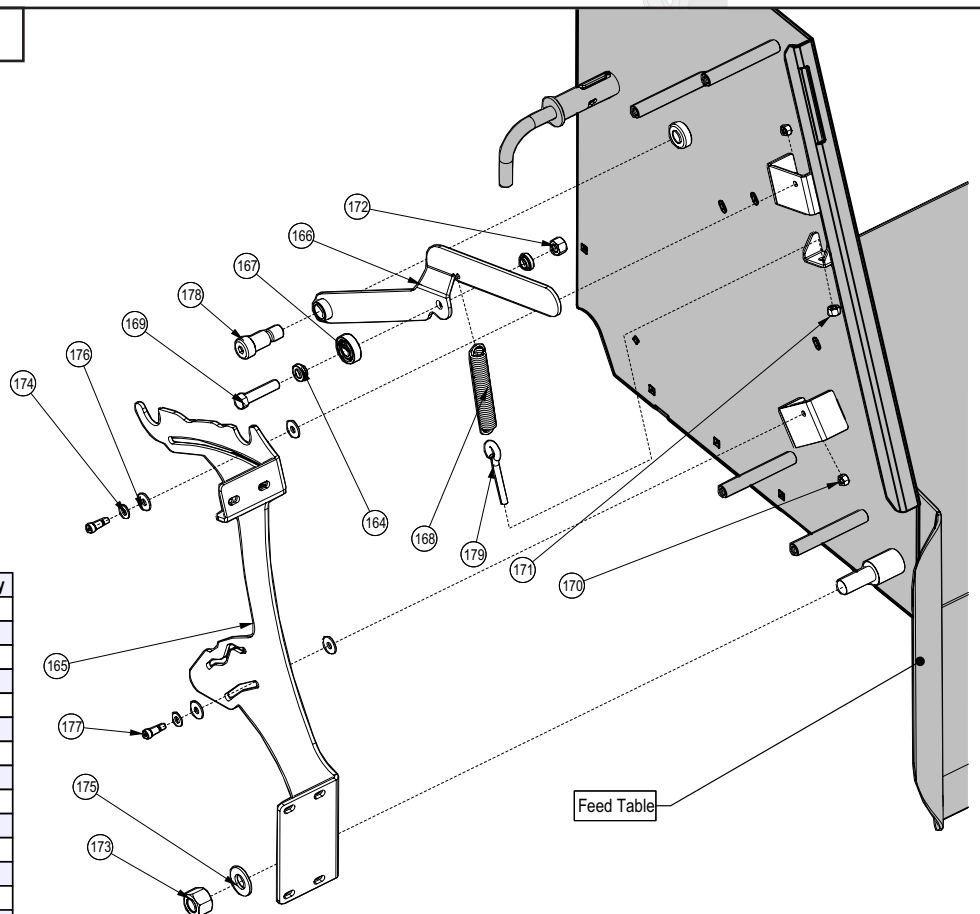
MODEL BX72R

| BOM ID | Description | Description | Qty |
|--------|-------------|--|-----|
| 155 | Z56215 | Spring Ctr Low Force Directional Valve | 1 |
| 156 | 1022M213 | Bearing Yoke | 1 |
| 157 | 1022M217 | Solid Bearing | 1 |
| 158 | Z11301 | Clevis Pin 3/16 x 1-3/8" | 1 |
| 159 | Z12210 | Hitch Pin Clip, 1/16 | 1 |
| 160 | Z51122 | Nipple, MP x MP 0808 | 1 |
| 161 | Z51451 | #8JIC x 1/2NPT 90 Elbow | 4 |
| 162 | Z51487 | Tee MJIC x MP x MJIC 080808 | 1 |
| 163 | Z56305 | Brand PFC 0-8 GPM | 1 |



Feed Roller Control Detail

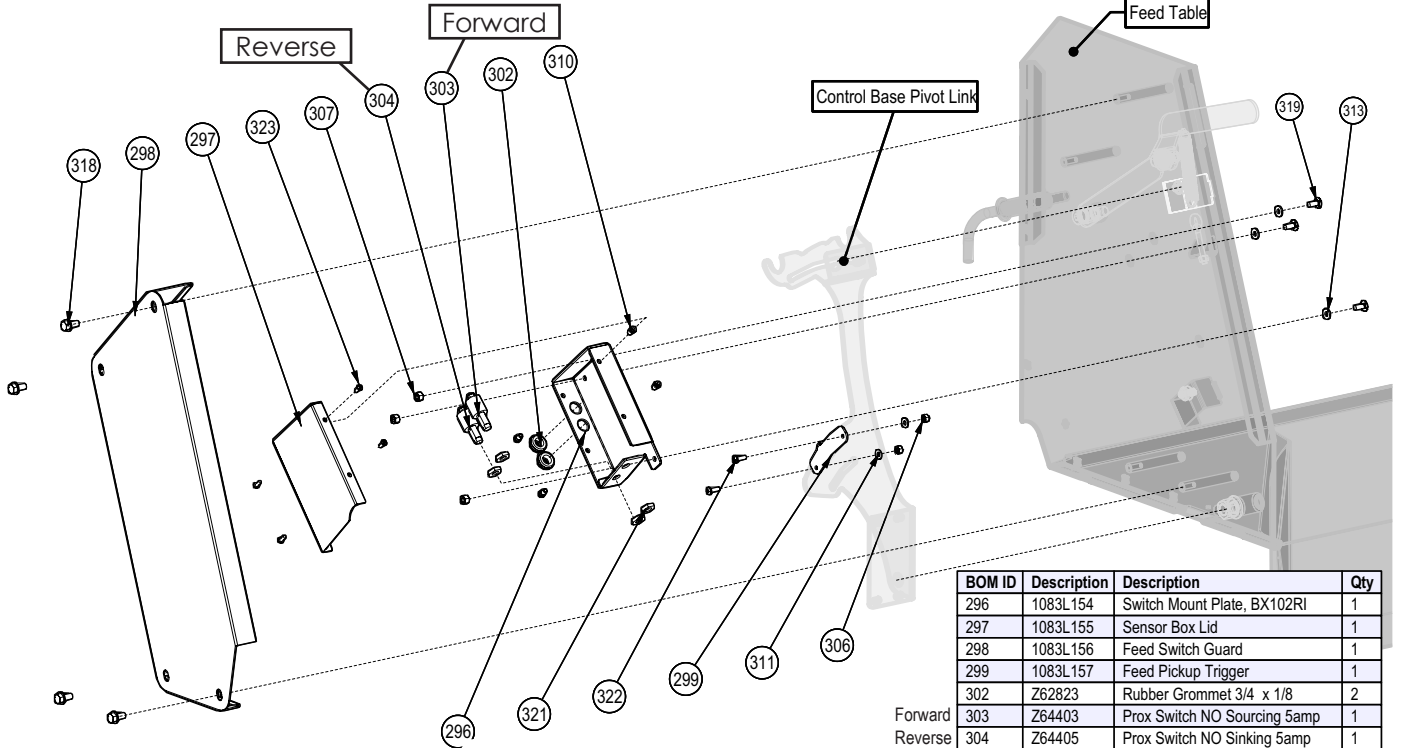
| BOM ID | Description | Description | Qty |
|--------|-------------|---------------------------------|-----|
| 164 | 1015M537 | Bushing, Bearing | 2 |
| 165 | 1022L239 | Control Base Pivot Link | 1 |
| 166 | 1022W224 | Detent Reset Weldment | 1 |
| 167 | Z21203 | Ball Bearing 6202 RS | 1 |
| 168 | Z31401 | Spring 3/4 x 4" Heavy | 1 |
| 169 | Z71420 | Hex Bolt, 7/16NC x 2 | 1 |
| 170 | Z72211 | Hex Lock Nut, 1/4NC | 2 |
| 171 | Z72221 | Hex Lock Nut, 5/16NC | 1 |
| 172 | Z72241 | Hex Lock Nut, 7/16NC | 1 |
| 173 | Z72271 | Hex Lock Nut, 3/4NC | 1 |
| 174 | Z73122 | Flat Washer, 5/16 | 2 |
| 175 | Z73171 | Flat Washer, 3/4" | 1 |
| 176 | Z73222 | PTFE Flat Washer, 5/16 x 0.080" | 4 |
| 177 | Z75522 | Shoulder Bolt, 5/16 x 1/2" | 2 |
| 178 | Z75574 | Shoulder Bolt, 3/4 x 1 | 1 |
| 179 | Z76522 | Eye Bolt 5/16NC x 2 | 1 |



MODELS BX72R, BX72RI

Intellifeed Roller Control Detail

MODEL B72RI



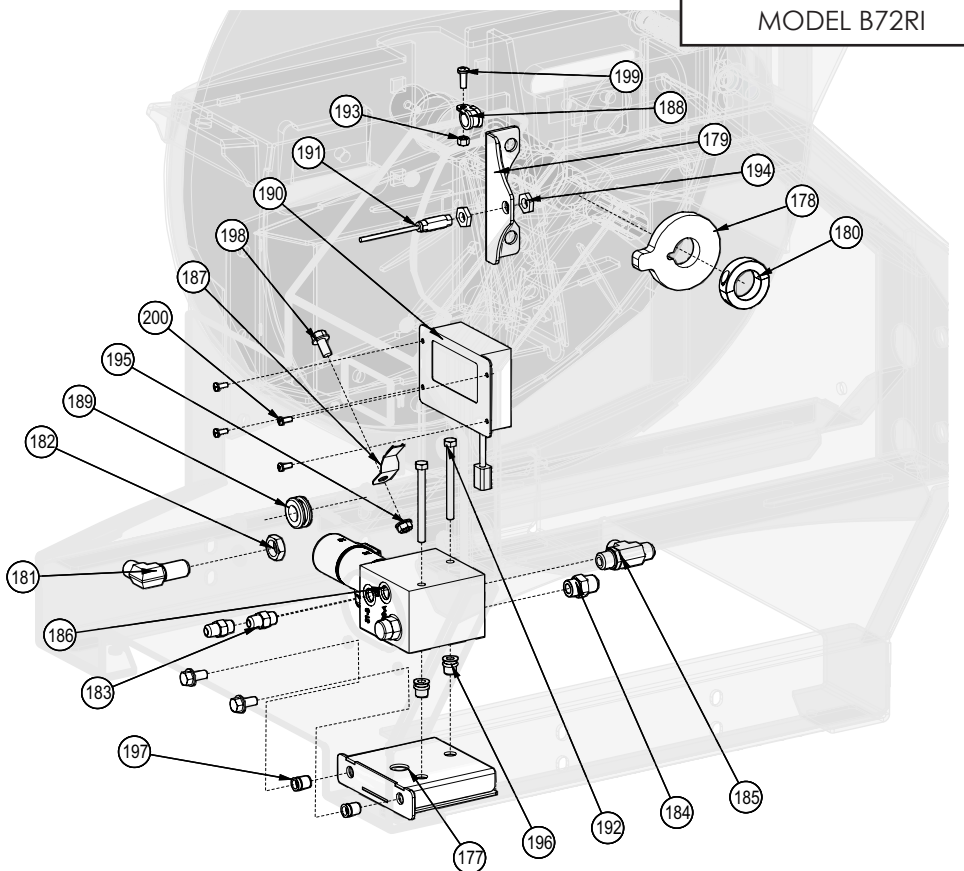
| BOM ID | Description | Description | Qty |
|--------|-------------|-----------------------------------|-----|
| 296 | 1083L154 | Switch Mount Plate, BX102RI | 1 |
| 297 | 1083L155 | Sensor Box Lid | 1 |
| 298 | 1083L156 | Feed Switch Guard | 1 |
| 299 | 1083L157 | Feed Pickup Trigger | 1 |
| 302 | Z62823 | Rubber Grommet 3/4 x 1/8 | 2 |
| 303 | Z64403 | Prox Switch NO Sourcing 5amp | 1 |
| 304 | Z64405 | Prox Switch NO Sinking 5amp | 1 |
| 306 | Z72211 | Hex Lock Nut, 1/4NC | 4 |
| 307 | Z72221 | Hex Lock Nut, 5/16NC | 4 |
| 310 | Z72954 | Riv-Nut #10-32NF - 130 | 4 |
| 311 | Z73111 | Flat Washer, 1/4 | 2 |
| 313 | Z73123 | Rubber Flat Washer, 5/16 x 0.093" | 3 |
| 318 | Z76133 | Flange Bolt, 3/8NC x 3/4 | 4 |
| 319 | Z76221 | Carriage Bolt, 5/16NC x 3/4 | 3 |
| 321 | Z77282 | Jam Nut, M14 x 1.5 | 4 |
| 322 | Z78301 | Machine Screw, 1/4-20NC x 3/4 | 2 |
| 323 | Z78303 | Machine Screw, #10-32NF x 1/2 | 4 |

Forward
Reverse

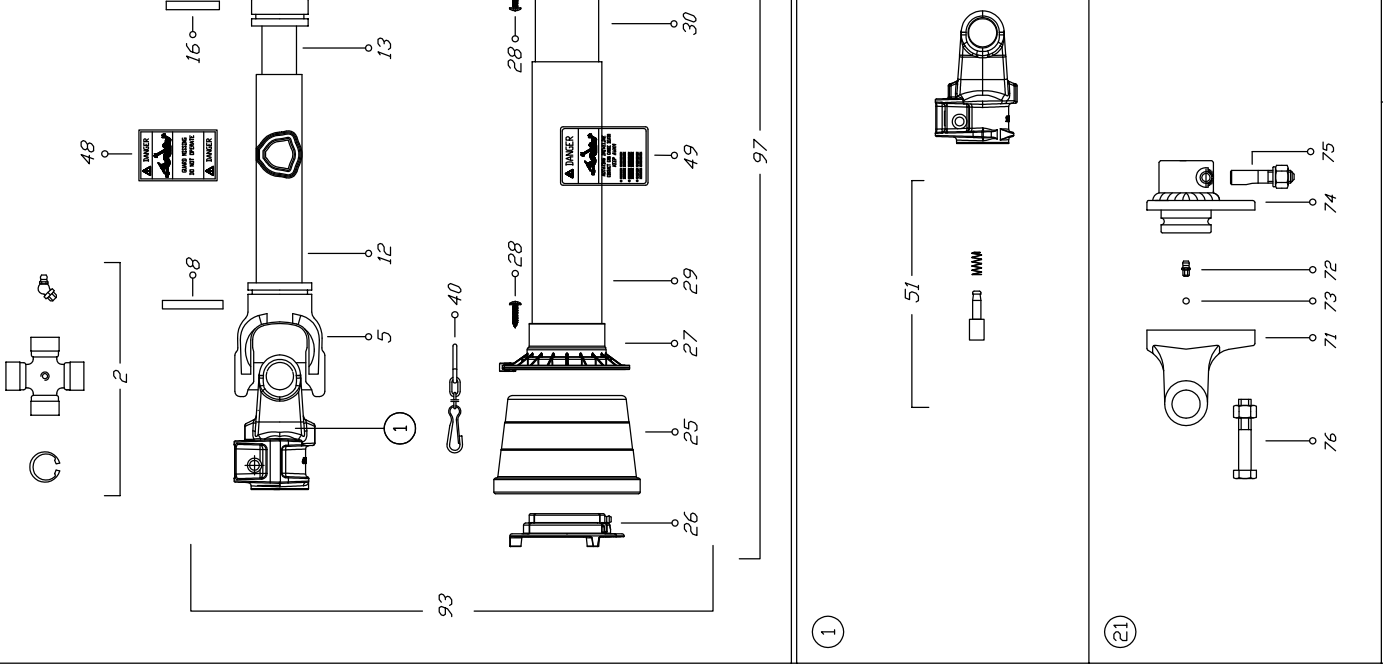
Intellifeed Components

MODEL B72RI

| BOM ID | Description | Description | Qty |
|--------|-------------|---|-----|
| 177 | 1083W151 | BX102R IntellIFEED Weldment | 1 |
| 178 | 1023L751 | Rotor Speed Indicator, BX102R | 1 |
| 179 | 1023L752 | Sensor Mounting Bracket | 1 |
| 180 | Z46315 | Shaft Collar, 1-3/8" ID x 9/16 | 1 |
| 181 | Z51492 | Elbow 90 MJIC x BH 0808 | 1 |
| 182 | Z51493 | BH Locknut, 08 | 1 |
| 183 | Z51641 | #6ORB x #6JIC | 2 |
| 184 | Z51643 | #8ORB x #8JIC | 1 |
| 185 | Z51673 | Tee, MJIC x MORB x MJIC 080808 | 1 |
| 186 | Z56508 | CR IntellIFEED Manifold 6gpm | 1 |
| 187 | Z62816 | Deutsch Mounting Clip | 1 |
| 188 | Z62819 | Rubberized Wire Clamp, 1/2" | 1 |
| 189 | Z62822 | Rubber Grommet 3/4 x 1/4 | 1 |
| 190 | Z66204 | Control, IntellIFEED | 1 |
| 191 | Z66210 | IntellIFEED Pickup Sensor with 68" Lead | 1 |
| 192 | Z71235 | Hex Bolt, 5/16NC x 3-1/2 | 2 |
| 193 | Z72211 | Hex Lock Nut, 1/4NC | 1 |
| 194 | Z72357 | Brass Jam Nut, 9/16-18NF | 2 |
| 195 | Z72531 | Flange Nut 3/8NC | 1 |
| 196 | Z72956 | Riv-Nut 5/16NC x 150 | 2 |
| 197 | Z72958 | Riv-Nut 3/8NC x 150 | 2 |
| 198 | Z76133 | Flange Bolt, 3/8NC x 3/4 | 3 |
| 199 | Z78301 | Machine Screw, 1/4-20NC x 3/4 | 1 |
| 200 | Z78303 | Machine Screw, #10-32NF x 1/2 | 4 |



MODELS BX72R, B72RI



PTO Shaft #Z44504

| Binacchi SPARE PARTS LIST : B5D056US098001 | | |
|--|----------------------------------|-------------------|
| POS. | DESCRIPTION | Q. Part # |
| 01 | YOKE | 1 0800503 |
| 02 | CROSS JOURNAL ASS. | 2 08205 |
| 05 | OUTER TUBE YOKE | 1 08005021 |
| 08 | FLEXIBLE PIN | 1 098701075 |
| 12 | CM. 100 CARDAN TUBE(*) | 1 09881523100 |
| 13 | CM. 100 CARDAN TUBE(*) | 1 09881454100 |
| 16 | FLEXIBLE PIN | 1 0987001065 |
| 17 | INNER TUBE YOKE | 1 08005011 |
| 21 | SHEAR BOLT M10X1.5X55 | 1 Z19407 (5 Pack) |
| 25 | CONE SHIELD BELL 05-06 | 2 021906C001 |
| 26 | OUTER BEARING 05 | 1 025505C001 |
| 27 | OUTER BASE CONE 05-06 | 1 025406C001 |
| 28 | SCREW | 6 0998052242 |
| 29 | OUTER SAFETY TUBE | 1 0988981NB5056 |
| 30 | INNER SAFETY TUBE | 1 0988975NB5056 |
| 31 | INNER BASE CONE 05-06 | 1 025406C002 |
| 32 | INNER BEARING 05 | 1 025505C002 |
| 40 | CHAIN | 1 0252000001 |
| 48 | LABEL DANGER OUTER DRIVE TUBE | 1 09872006 |
| 49 | EXTERNAL SHIELD LABEL | 1 09872003 |
| 51 | COMPLETE PUSH BUTTTON | 1 0986014047 |
| 71 | YOKE FOR LBS | 1 08896905 |
| 72 | GREASE NIPPLE | 1 0984010150 |
| 73 | STEEL BALL | 23 098680104 |
| 74 | HUB | 1 088965A60 |
| 75 | PUSH PIN SET | 1 0986014075 |
| 76 | NUT AND BOLT M10 x 1.5 x 55 10.9 | 1 Z19407 (5 Pack) |
| 93 | OUTER HALF SHAFT | 1 B5056US2 |
| 94 | INNER HALF SHAFT | 1 B5056US1098001 |
| 97 | SAFETY GUARD | 1 083US05056 |

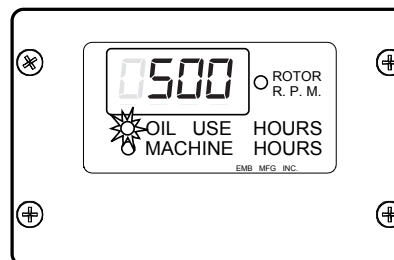
Intellifeed Settings

Programming Hints: The factory settings provide good overall performance for the BX chippers, however you may under certain circumstances, choose to customize performance. Here are some helpful hints:

- For heavier brush, decrease the upper flow percentage for slower feed speed.
- For lighter brush, increase the upper flow percentage for faster feed speed.
- If the chipper is stalling before the feed rolls stop, increase the rotor floor setting.
- If you prefer more aggressive feeding with faster feed and more stops, increase the lower flow percentage.

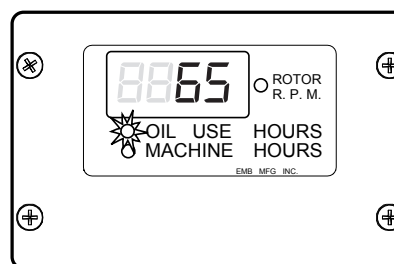
1. Programming Upper RPM Limit (Ceiling):

- **factory setting is :**
 - **500 RPM for 540 RPM operating speed**
 - **950 RPM for 1000 RPM operating speed**
- Press mode button twice. Digital readout will display current upper limit setting. This represents the RPM at which the Rapid Recovery Auto Reverse will re-start the feed rolls after a suspension.
- Oil Use indicator will flash. Increase or decrease setting using program buttons



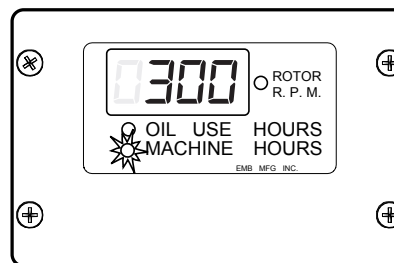
2. Programming Upper Flow Percentage:

- **factory setting is 65%**
- Press mode button once more. Digital readout will display current upper flow setting. This represents the percent of hydraulic flow that will be sent to the feed rolls (Feed speed.).
- Oil Use indicator will flash. Increase or decrease setting using program buttons, do not set above 80 %



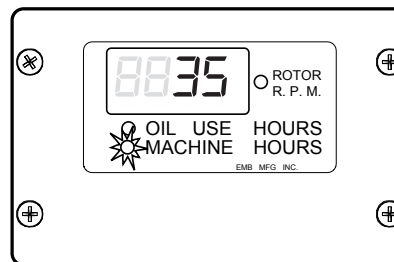
3. Programming Lower RPM Limit (Floor) :

- **Factory setting is:**
 - **300 RPM for 540 RPM operating speed**
 - **650 RPM for 1000 RPM operating speed**
- Press mode button once more. Digital readout will display current lower limit setting. This represents the rotor RPM at which the Rapid Recovery Auto Reverse will reverse and suspend the feed rolls.
- Machine hours indicator will flash. Increase or decrease setting using program buttons.



4. Programming Lower Flow Percentage:

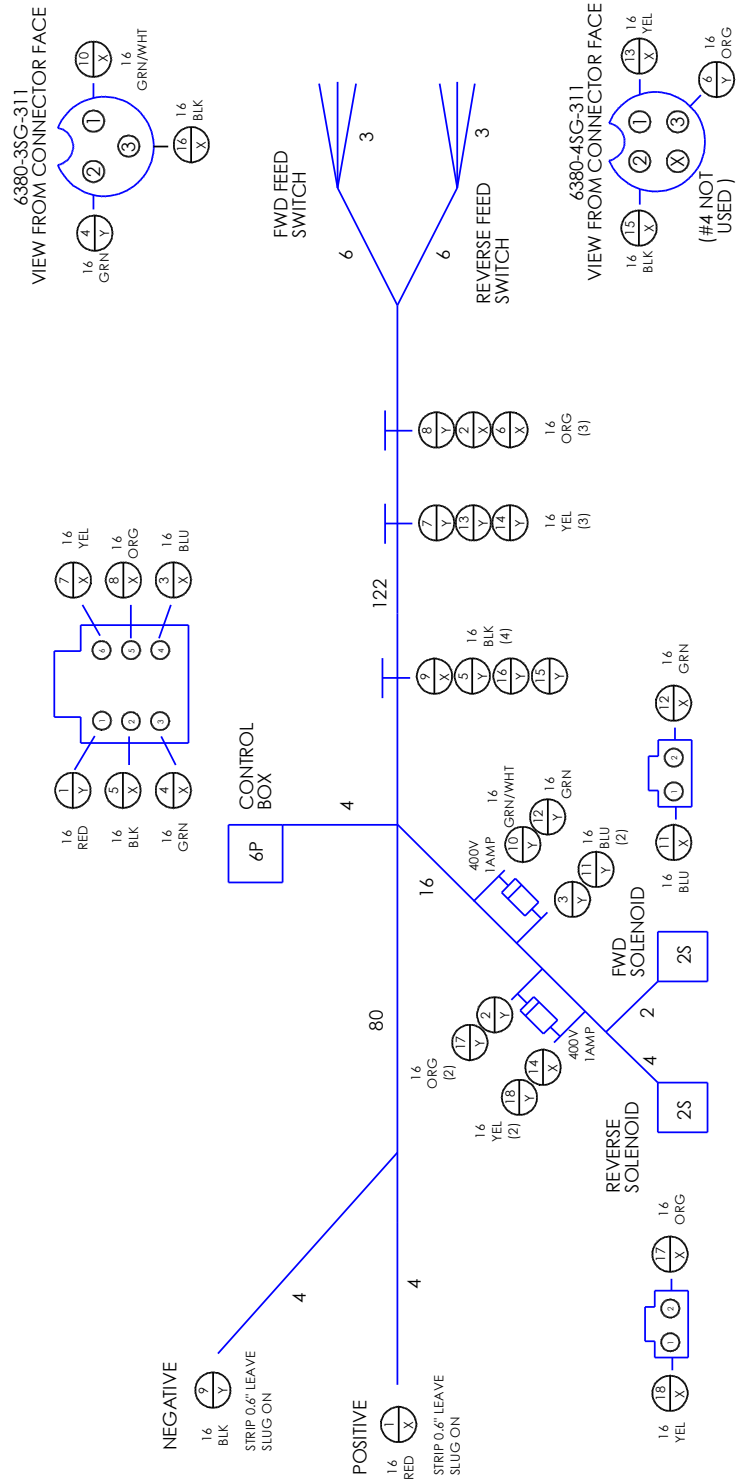
- **factory setting is 35%**
- Press mode button once more. Digital readout will display current lower flow setting. This represents the percent of hydraulic flow that will be sent to the feed rolls (Feed speed.).
- Machine hours indicator will flash. Increase or decrease setting using program buttons, do not set below 25%



MODELS BX72R, BX72RI

Intellifeed Wiring Diagram #Z62109

NOTE: HARNESS IS BRAIDED



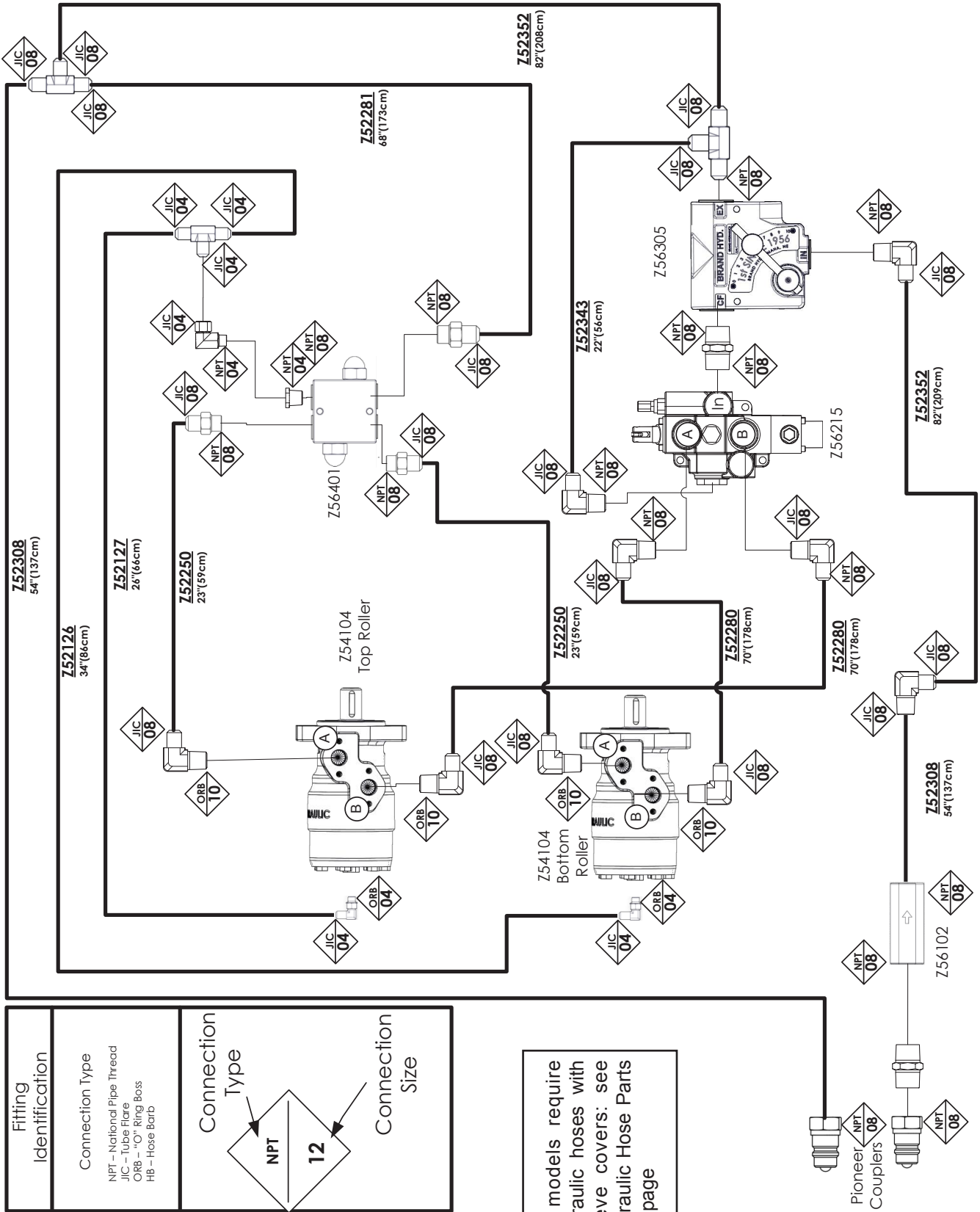
Hydraulic Hose Parts List

The Chart below is a complete list of hydraulic hoses for all models of the BX72. For information on your model and its hose connections please review the hydraulic schematics on the following pages.

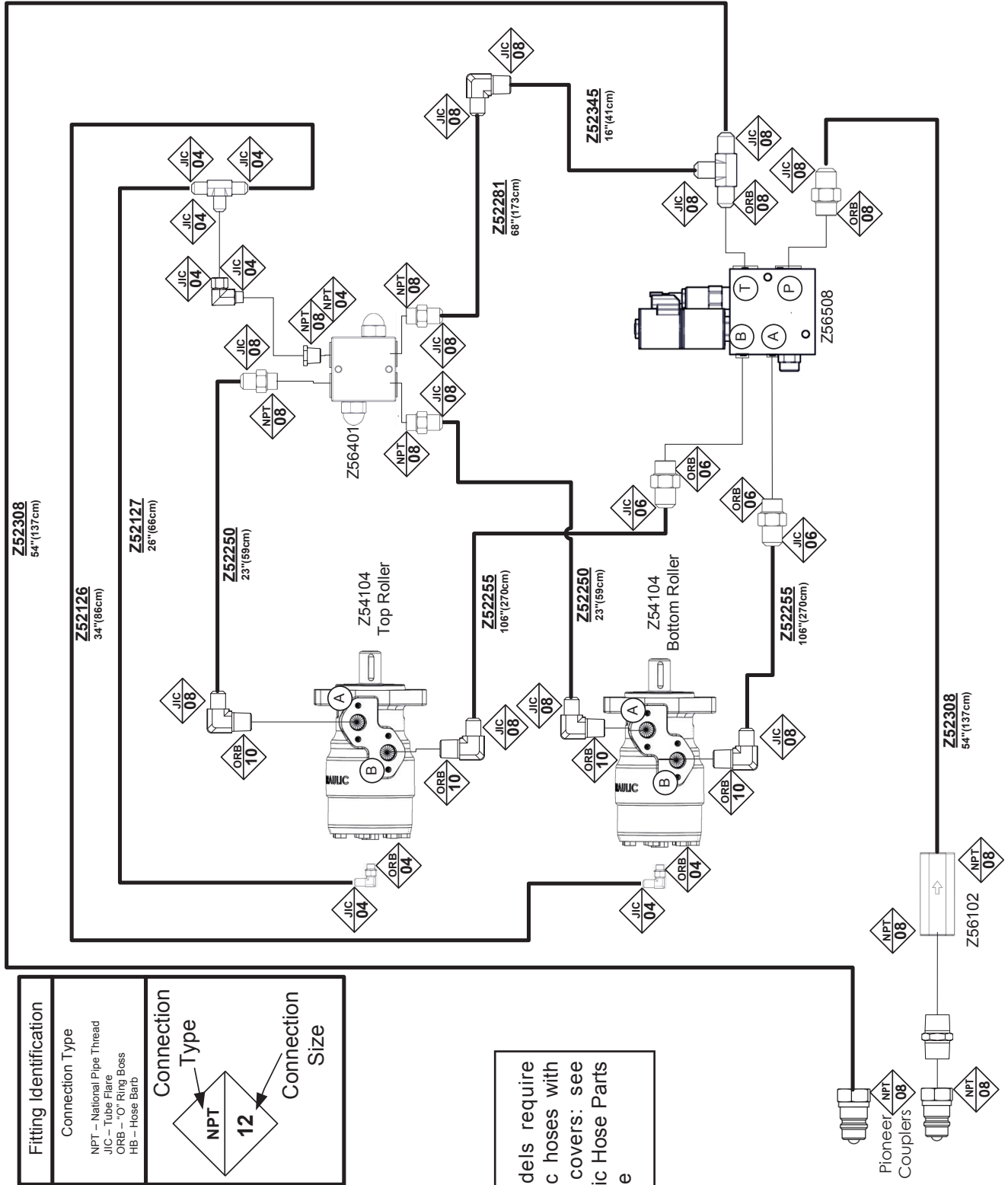
| PARTNUMBER | | Description | QTY. |
|------------------------|----------------------------|------------------------------------|------|
| With Protective Sleeve | With Out Protective Sleeve | | |
| | 1023F109 | 3/8 Hose, FJIC08 x 90FJIC08 x 23" | 2 |
| n/a | 1023F110 | 1/4 Hose, FJIC04 x 90FJIC04 x 34" | 1 |
| n/a | 1023F111 | 1/4 Hose, FJIC04 x 90FJIC04 x 26" | 1 |
| n/a | 1023F112 | 1/4 Grease Whip, MP02 x MP02 x 13" | 2 |
| n/a | 1023F113 | 1/4 Grease Whip, MP02 x MP02 x 16" | 2 |
| n/a | 1023F101 | 1/2 Hose, FJIC08 x MP08 x 84" | 2 |
| n/a | 1023F103 | 3/8 Hose, FJIC08 x FJIC08 x 68" | 1 |
| | 1023F106 | 3/8 Hose, FJIC08 x 90FJIC06 x 106" | 2 |
| | 1023F107 | 1/2 Hose, FJIC08 x 90FJIC08 x 16" | 1 |

Hoses with Protective Sleeves are required for EU models

Hydraulic Schematic BX72R



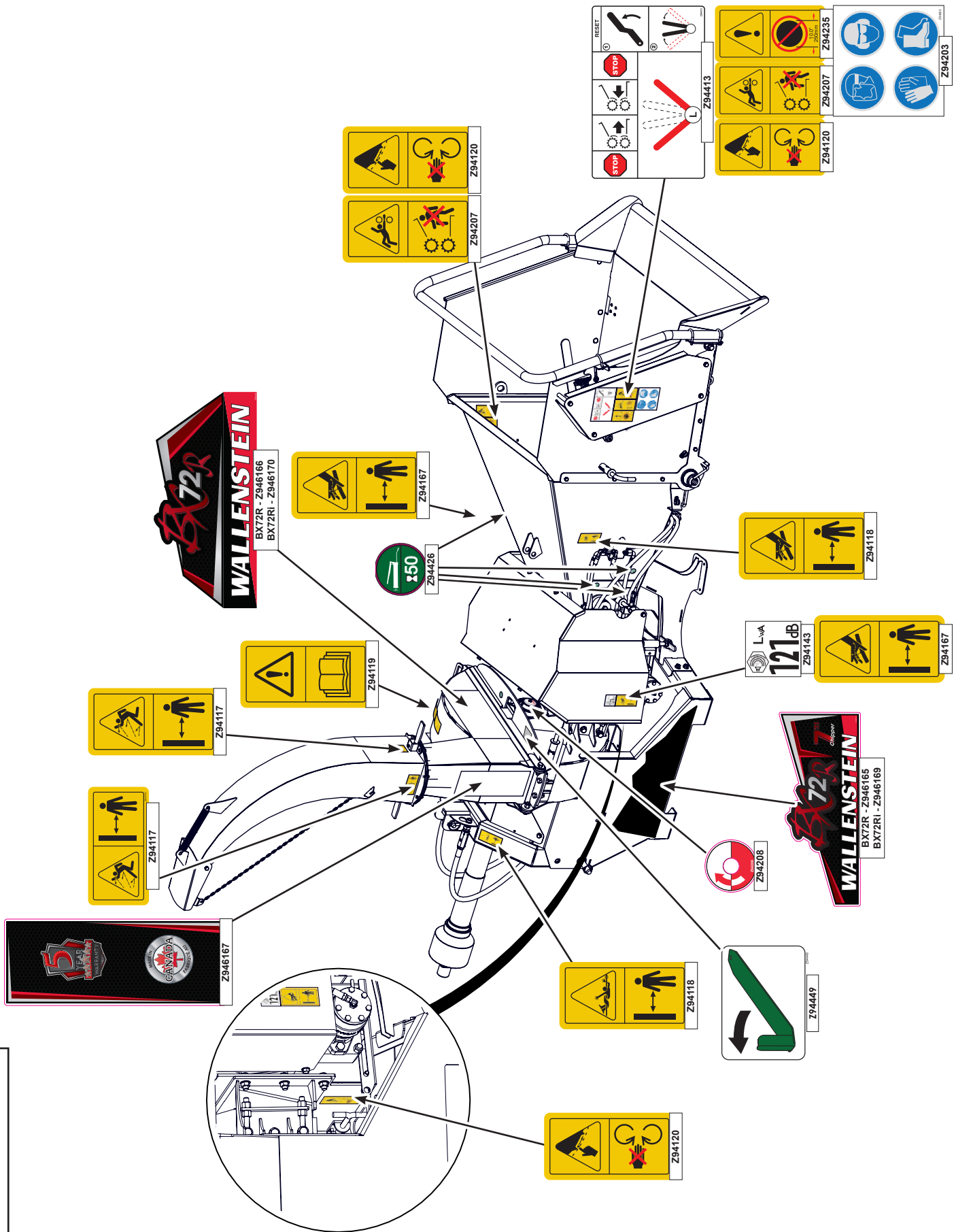
Hydraulic Schematic BX72RI



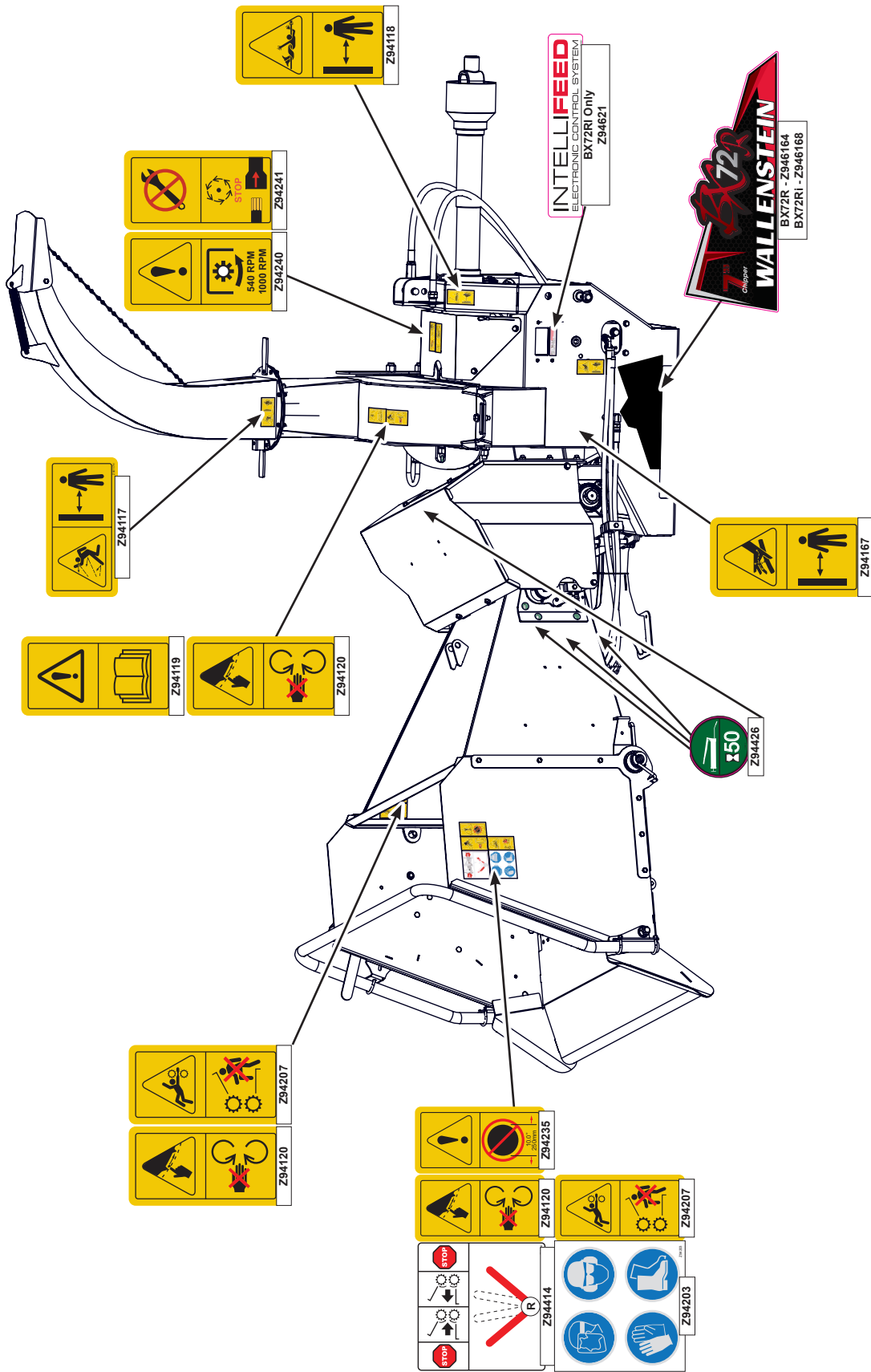
| Fitting Identification |
|---|
| Connection Type |
| NPT – National Pipe Thread JIC – Tube Flare ORB – "O" Ring Boss HB – Hose Barb |
| Connection Type |
| NPT |
| Connection Size |
| 12 |

EU models require hydraulic hoses with sleeve covers: see Hydraulic Hose Parts List page

Labels - Left Side View



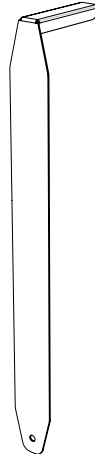
Labels - Right Side View



Accessories

Call your dealer for pricing and availability

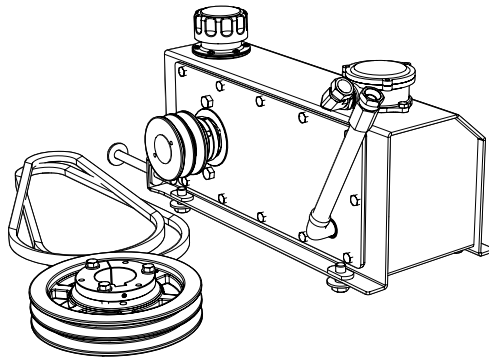
#1012L269



#1012L269 Ledger Clearance Setting Gauge.

For **BX72 Series**

An easy and accurate way of setting the critical clearances between the ledger blade and the rotor chipper blade.



#C4550

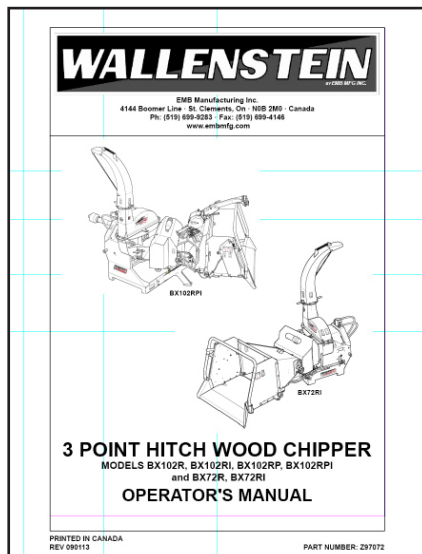
#C3540 SELF CONTAINED PTO POWER PACK

For model: **BX72 Series**

Easy to install

For tractors without available hydraulics, the optional power-pack mounts on the chipper just under the PTO shaft, and provides you with the means to operate the hydraulic feed hopper on model BX72R.

**#Z97072
OPERATOR'S MANUAL**



Available as a download at
www.wallensteinequipment.com