



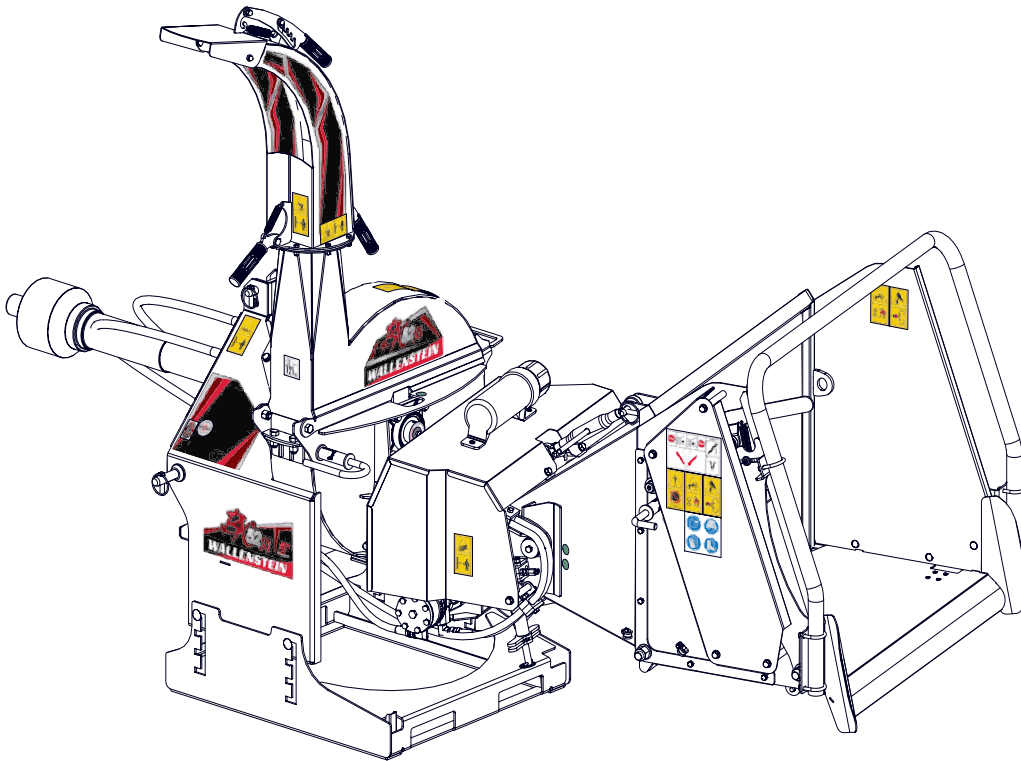
EMB Manufacturing Inc.
4144 Boomer Line · St. Clements, On · N0B 2M0 · Canada
Ph: (519) 699-9283 · Fax: (519) 699-4146
www.wallensteinequipment.com

BX52 3PH Roller Feed Chipper

Parts Manual

Starting with S/N 152R2

MODELS BX52R & BX52RI



Refer to the operators
manual for safe
operation and
maintainance



Foreword

EMB Mfg. has prepared this parts manual to assist customers in ordering quality OEM replacement parts.

Proper and regular service and replacing old, worn or broken parts with the correct OEM parts are essential to prolonging the life of your EMB product. Please refer to this manual before ordering any replacement parts.

All information contained in this parts manual is based on the latest product specification available at the time of printing this manual. If your product differs from the specifications contained within this manual contact EMB Mfg. for information.

EMB reserves the right to alter specifications on their products at any time.

Reproduction of this parts manual of any kind is prohibited without prior written permission from EMB Mfg.

For parts and information please contact your dealer. If your dealer is no longer available please go to our website: www.wallensteinequipment.com and click on "FIND A DEALER NEAR YOU" for information on a local dealer.

BX52 Variation Chart

BX Option Cross Reference			Option			
			Self Feed	Roller Feed	Intellifeed	Revision Level
Model	BX52SEU	BX52S	x			#
	BX52REU	BX52R		x		#
	BX52RIEU	BX52RI		x	x	#

Table of Contents

BX52 Variation Chart	2
Bolt Torque.....	4
Hydraulic Fitting Torque	5
Rotor Assembly	6
Lower Rotor Housing.....	7
Ledger Knife Detail	8
Upper Rotor Housing	8
Discharge Chute.....	9
Upper Roller Detail.....	10
Right Upper Roller Pivot Assembly	11
Left Upper Roller Pivot Assembly	12
Lower Roller Assembly	13
Main Hopper Assembly	14
Feed Table Assembly	15
Roller Valve Detail	16
Feed Roller Control Detail	16
Intellifeed Roller Control Components	17
Intellifeed Components	17
PTO Shaft #Z44504.....	18
Intellifeed Settings	19
Intellifeed Wiring Diagram #Z62109	20
Hydraulic Hose Parts List	21
Hydraulic Schematic BX52R.....	22
Hydraulic Schematic BX52RI.....	22
Labels - Left Side View	23
Labels - Right Side View	24
Accessories.....	25



Exercise caution when working with machinery ensure the engine is disabled, wear appropriate personal protection equipment.

Bolt Torque

CHECKING BOLT TORQUE

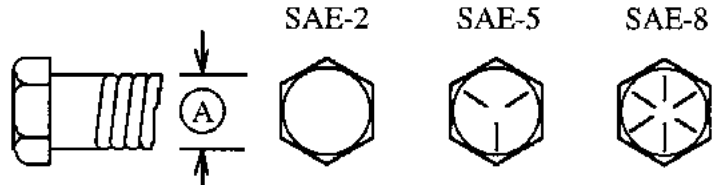
The tables shown below give correct torque values for various bolts and capscrews. Tighten all bolts to the torques specified in chart unless otherwise noted. Check tightness of bolts periodically, using bolt torque chart as a guide. Replace hardware with the same strength bolt.

Torque figures indicated above are valid for non-greased or non-oiled threads and heads unless otherwise specified. Therefore, do not grease or oil bolts or capscrews unless otherwise specified in this manual. When using locking elements, increase torque values by 5%.

* Torque value for bolts and capscrews are identified by their head markings.

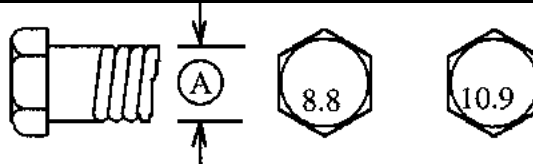
ENGLISH TORQUE SPECIFICATIONS

Bolt Diameter "A"	Bolt Torque*					
	SAE 2 (N.m) (lb-ft)		SAE 5 (N.m) (lb-ft)		SAE 8 (N.m) (lb-ft)	
1/4"	8	6	12	9	17	12
5/16"	13	10	25	19	36	27
3/8"	27	20	45	33	63	45
7/16"	41	30	72	53	100	75
1/2"	61	45	110	80	155	115
9/16"	95	60	155	115	220	165
5/8"	128	95	215	160	305	220
3/4"	225	165	390	290	540	400
7/8"	230	170	570	420	880	650
1"	345	225	850	630	1320	970



METRIC TORQUE SPECIFICATIONS

Bolt Diameter "A"	Bolt Torque*			
	8.8 (N.m) (lb-ft)		10.9 (N.m) (lb-ft)	
M3	0.5	0.4	1.8	1.3
M4	3	2.2	4.5	3.3
M5	6	4	9	7
M6	10	7	15	11
M8	25	18	35	26
M10	50	37	70	52
M12	90	66	125	92
M14	140	103	200	148
M16	225	166	310	229
M20	435	321	610	450
M24	750	553	1050	774
M30	1495	1103	2100	1550
M36	2600	1917	3675	2710



Hydraulic Fitting Torque

Tightening Flare Type Tube Fittings *

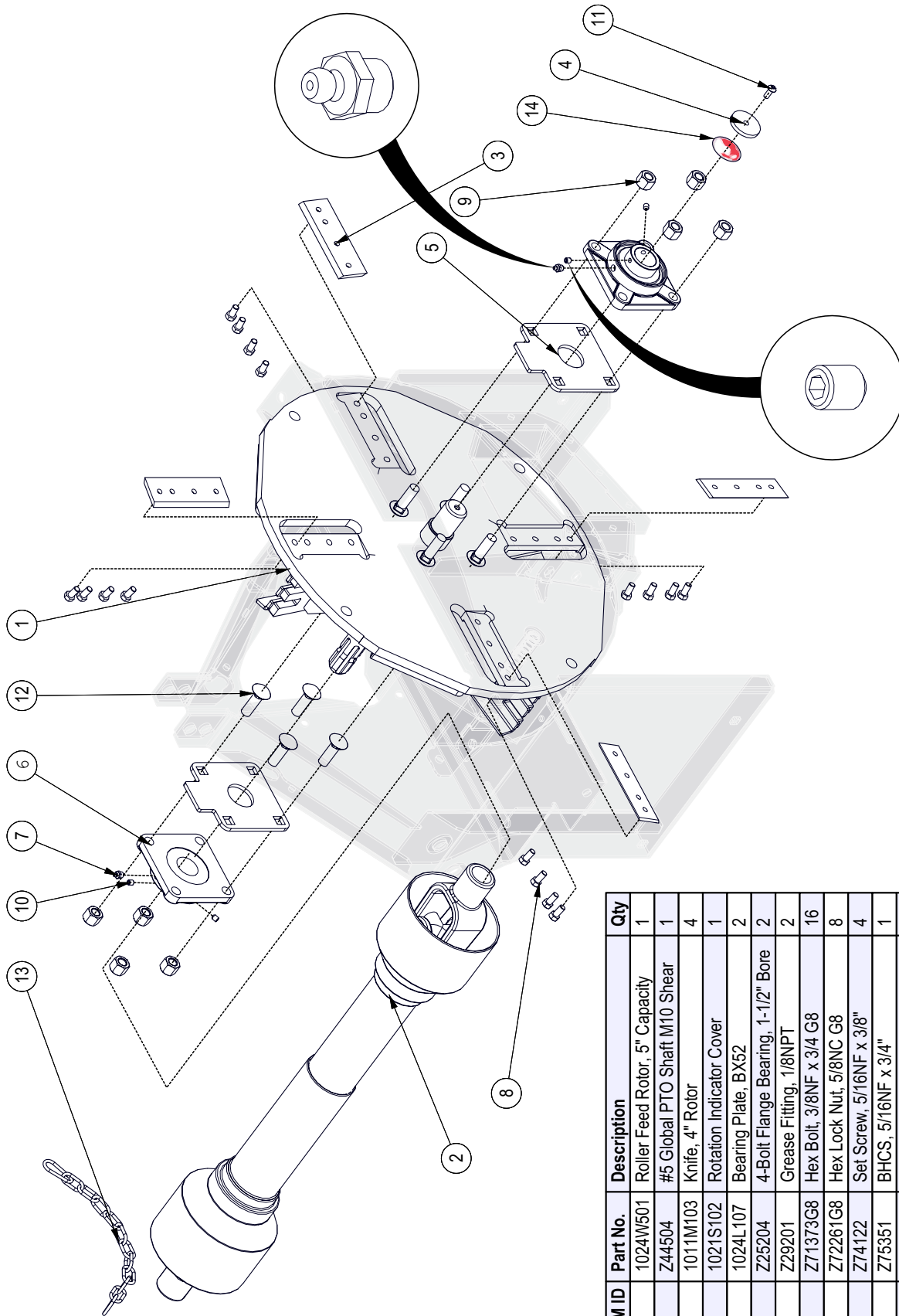
1. Check flare and flare seat for defects that might cause leakage.
2. Align tube with fitting before tightening.
3. Lubricate connection and hand tighten swivel nut until snug.
4. To prevent twisting the tube(s), use two wrenches. Place one wrench on the connector body and with the second tighten the swivel nut to the torque shown.

Tube Size OD	Nut Size Across Flats	Torque Value*		Recommended Turns To Tighten (After Finger Tightening)	
		(N.m)	(lb-ft)	(Flats)	(Turn)
3/16	7/16	8	6	1	1/6
1/4	9/16	12	9	1	1/6
5/16	5/8	16	12	1	1/6
3/8	11/16	24	18	1	1/6
1/2	7/8	46	34	1	1/6
5/8	1	62	46	1	1/6
3/4	1-1/4	102	75	3/4	1/8
7/8	1-3/8	122	90	3/4	1/8

The torque values shown are based on lubricated connections as in reassembly.

MODELS BX52R, BX52RI

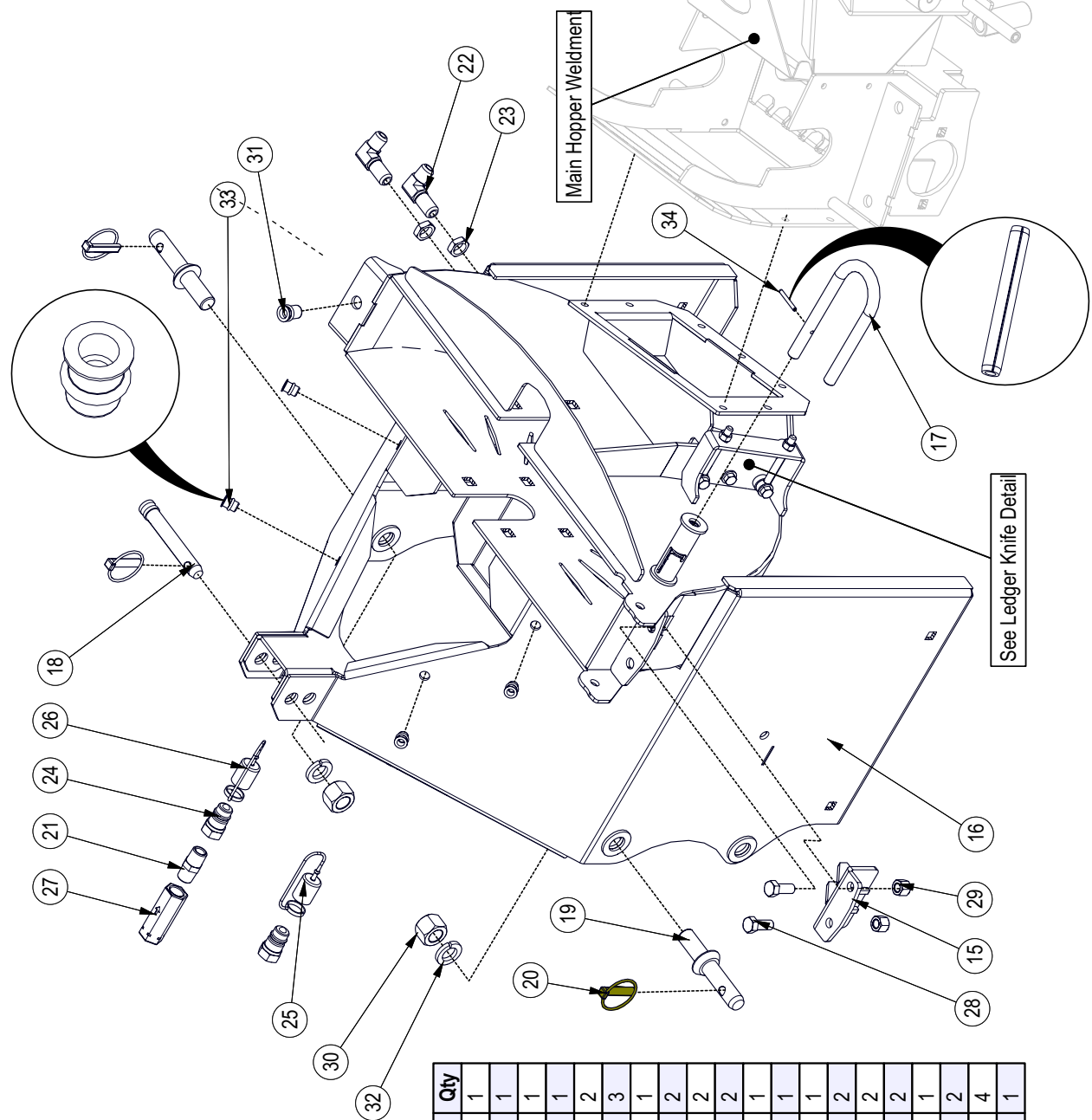
Rotor Assembly



BOM ID	Part No.	Description	Qty
1	1024W501	Roller Feed Rotor, 5" Capacity	1
2	Z44504	#5 Global PTO Shaft M10 Shear	1
3	1011M103	Knife, 4" Rotor	4
4	1021S102	Rotation Indicator Cover	1
5	1024L107	Bearing Plate, BX52	2
6	Z25204	4-Bolt Flange Bearing, 1-1/2" Bore	2
7	Z29201	Grease Fitting, 1/8NPT	2
8	Z71373G8	Hex Bolt, 3/8NF x 3/4 G8	16
9	Z72261G8	Hex Lock Nut, 5/8NC G8	8
10	Z74122	Set Screw, 5/16NF x 3/8"	4
11	Z75351	BHCS, 5/16NF x 3/4"	1
12	Z76261G8	Carriage Bolt, 5/8NC x 2" G8	8
13	Z92310	Chain 3/16" x 12" double hook ends	1
14	Z94208	Clockwise Rotation Label	1

MODELS BX52R, BX52RI

Lower Rotor Housing



BOM ID	Part No.	Description	Qty
15	1024W103	Twig Breaker, BX52	1
16	1024W502	Weldment, Lower Rotor Housing	1
17	1082M402	Locking Plunger	1
18	Z11122	Toplink Pin, 3/4" x 3-7/8"	1
19	Z11431	Implement Pin, 7/8" x 1-3/4" x 7/8NF	2
20	Z12140	Lynch Pin, 7/16"	3
21	Z51122	Straight, MP x MP 0808	1
22	Z51492	Elbow 90, MJIC x BH 0808	2
23	Z51493	BH Locknut, 08	2
24	Z51926	Quick Coupler, FP08 x M ISO 7241-1	2
25	Z52831	Nipple Cap, ISO 7241-1 x Red	1
26	Z52832	Nipple Cap, ISO 7241-1 x Black	1
27	Z56102	Check Valve, FP08 x 0PSI	1
28	Z71512	Hex Bolt, 1/2NC x 1-1/4"	2
29	Z72251	Hex Lock Nut, 1/2NC	2
30	Z72282	Hex Lock Nut, 7/8NF	2
31	Z72960	Rivet Nut, 1/2NC x 200	1
32	Z73381	Split Lock Washer, 7/8"	2
33	Z77940	Rivet Nut, M10x1.5 x 313	4
34	Z14151	Roll Pin, 3/16" x 1-1/2"	1

Ledger Knife Detail

MODELS BX52R, BX52RI

BOM ID	Part No.	Description	Qty
78	1011M104	Knife, 4" Ledger	1
79	1024L124	Ledger Washer	2
80	Z71372G8	Hex Bolt, 3/8NF x 5/8" G8	1
81	Z71379G8	Hex Bolt, 3/8NF x 1-1/4" G8	2
82	Z72131	Hex Nut, 3/8NC	4
83	Z73131	SAE Washer, 3/8"	7
84	Z76534	Rod End, 3/8NC x 3-1/2"	2

Weldment, Lower Rotor Housing

Upper Rotor Housing

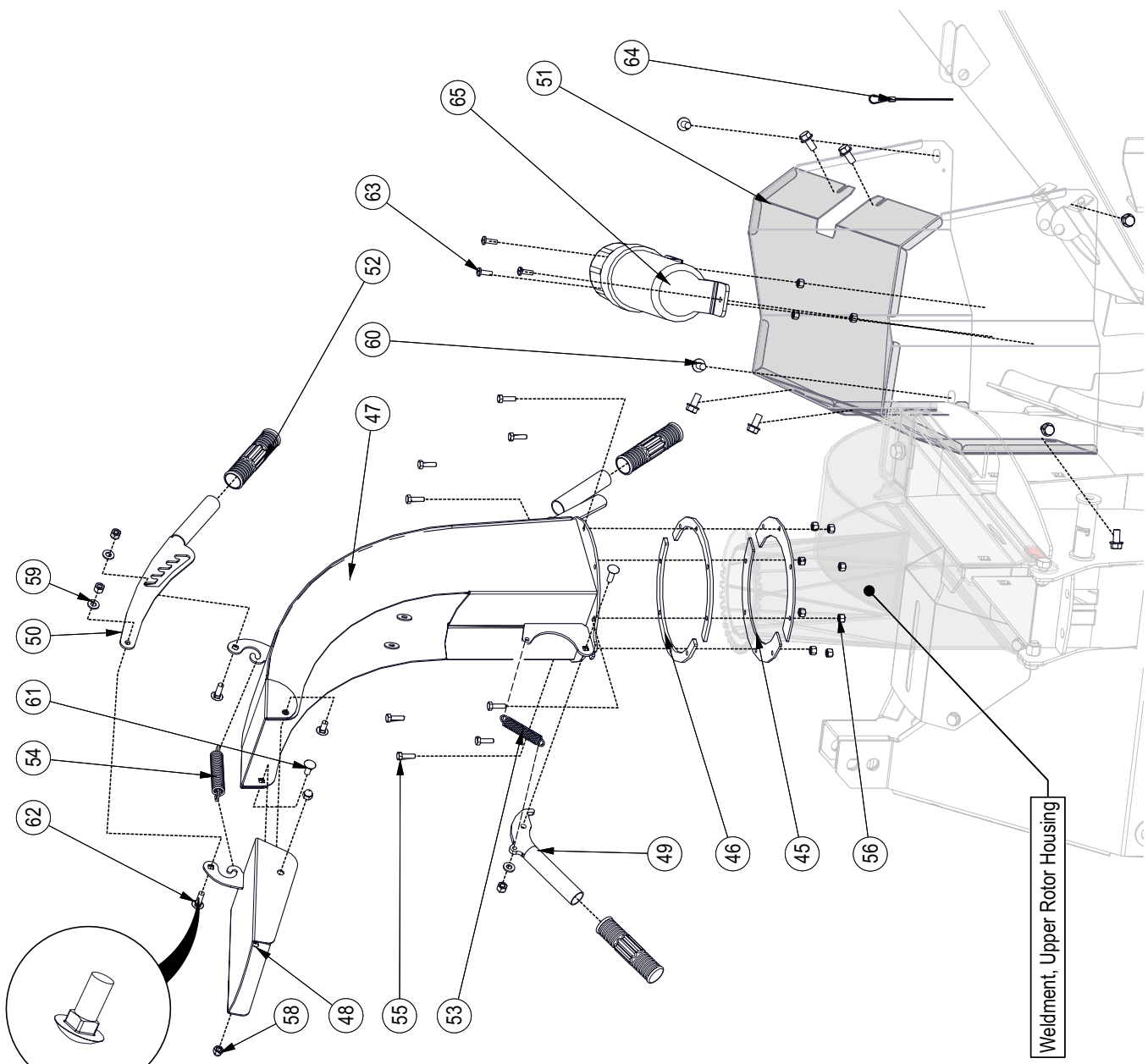
MODELS BX52R, BX52RI

BOM ID	Part No.	Description	Qty
34	1024W104	Weldment, Upper Rotor Housing	1
35	1024W709	BX52R Extended Base	1
36	1024L123	Hood Ring, BX52	1
37	1024L161	Gauge, Ledger Setting	1
38	1024L554	PTO Guard	1
39	Z71512	Hex Bolt, 1/2NC x 1-1/4"	2
40	Z72551	Serrated Flange Locknut, 1/2NC	4
41	Z73131	SAE Washer, 3/8"	4
42	Z76259	Carriage Bolt, 1/2NC x 1-1/4"	4
43	Z77162	Hex Bolt, M10x1.5 x 25mm	4
44	Z76155	Flange Bolt, 1/2NC x 1-3/4"	1
45	Z72251	Hex Lock Nut, 1/2NC	2
46	Z92127	1/16 Aircraft cable x 16"	1

Weldment, Lower Rotor Housing

MODELS BX52R, BX52RI

Discharge Chute

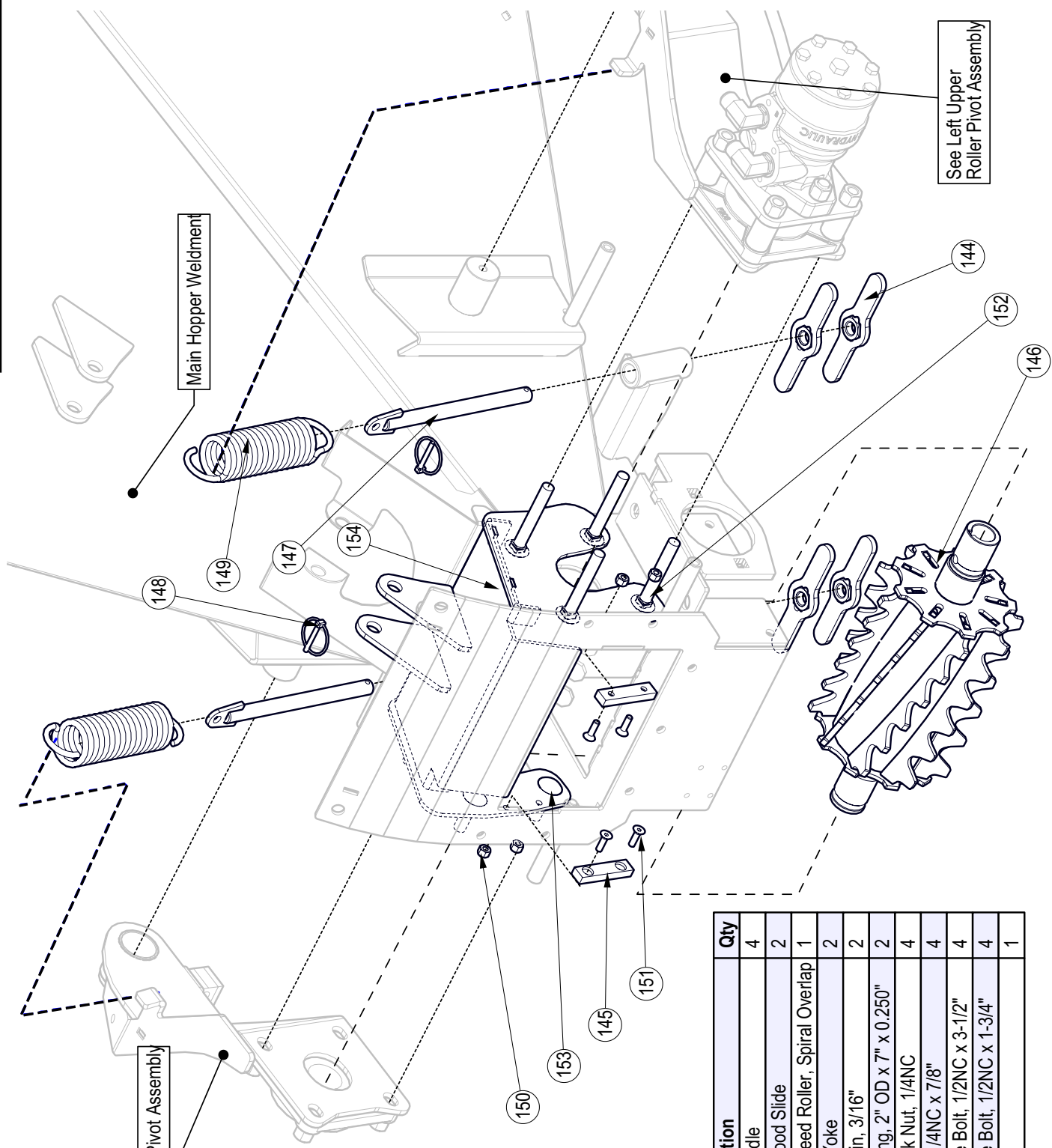


BOM ID	Part No.	Description	Qty
45	1024L133	Hood Capture Ring	2
46	1024L134	Spacer Ring	2
47	1024W106	Weldment, Discharge Chute	1
48	1024W107	Weldment, Discharge Deflector	1
49	1024W108	Weldment, Discharge Latch	1
50	1024W109	Weldment, Discharge Adjustor	1
51	1024W621	Bridge Guard	1
52	Z19321	Grip, 1" x 5"	3
53	Z31305	Ext Spring, 5/8" OD x 3" x 0.08"	1
54	Z31401	Ext Spring, 3/4" OD x 4" x 0.105"	1
55	Z71108	Hex Bolt, 1/4NC x 7/8"	8
56	Z72211	Hex Lock Nut, 1/4NC	11
58	Z72221	Hex Lock Nut, 5/16NC	2
59	Z73122	SAE Washer, 5/16"	3
60	Z76133	Flange Bolt, 3/8NC x 3/4"	8
61	Z76221	Carriage Bolt, 5/16NC x 0.75"	2
62	Z76225	Carriage Bolt, 5/16NC x 1"	3
63	Z78301	Machine Screw, 1/4NC x 3/4"	3
64	Z92110	1/16 Aircraft cable x 2'	1
65	Z96503	Manual Tube 3-1/2 Short	1

Weldment, Upper Rotor Housing

MODELS BX52R, BX52RI

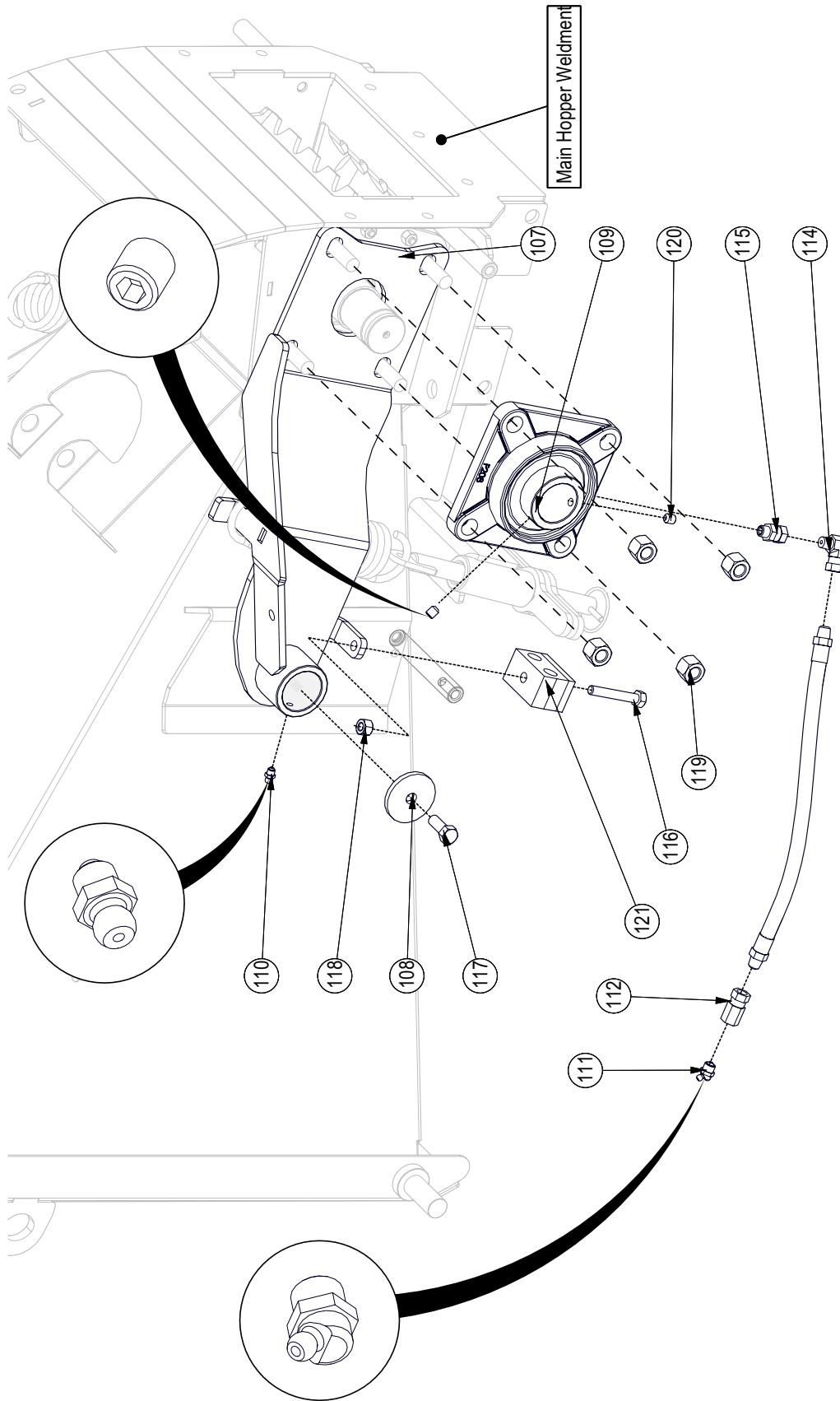
Upper Roller Detail



BOM ID	Part No.	Description	Qty
144	1022W220	Nut Handle	4
145	1024S707	Rotor Hood Slide	2
146	1024W710	Upper Feed Roller, Spiral Overlap	1
147	1024W708	Spring Yoke	2
148	Z12110	Lynch Pin, 3/16"	2
149	Z31501	Ext Spring, 2" OD x 7" x 0.250"	2
150	Z72211	Hex Lock Nut, 1/4NC	4
151	Z75211	FHCS, 1/4NC x 7/8"	4
152	Z762510	Carriage Bolt, 1/2NC x 3-1/2"	4
153	Z76258	Carriage Bolt, 1/2NC x 1-3/4"	4
154	1024W618	Bridge	1

MODELS BX52R, BX52RI

Right Upper Roller Pivot Assembly

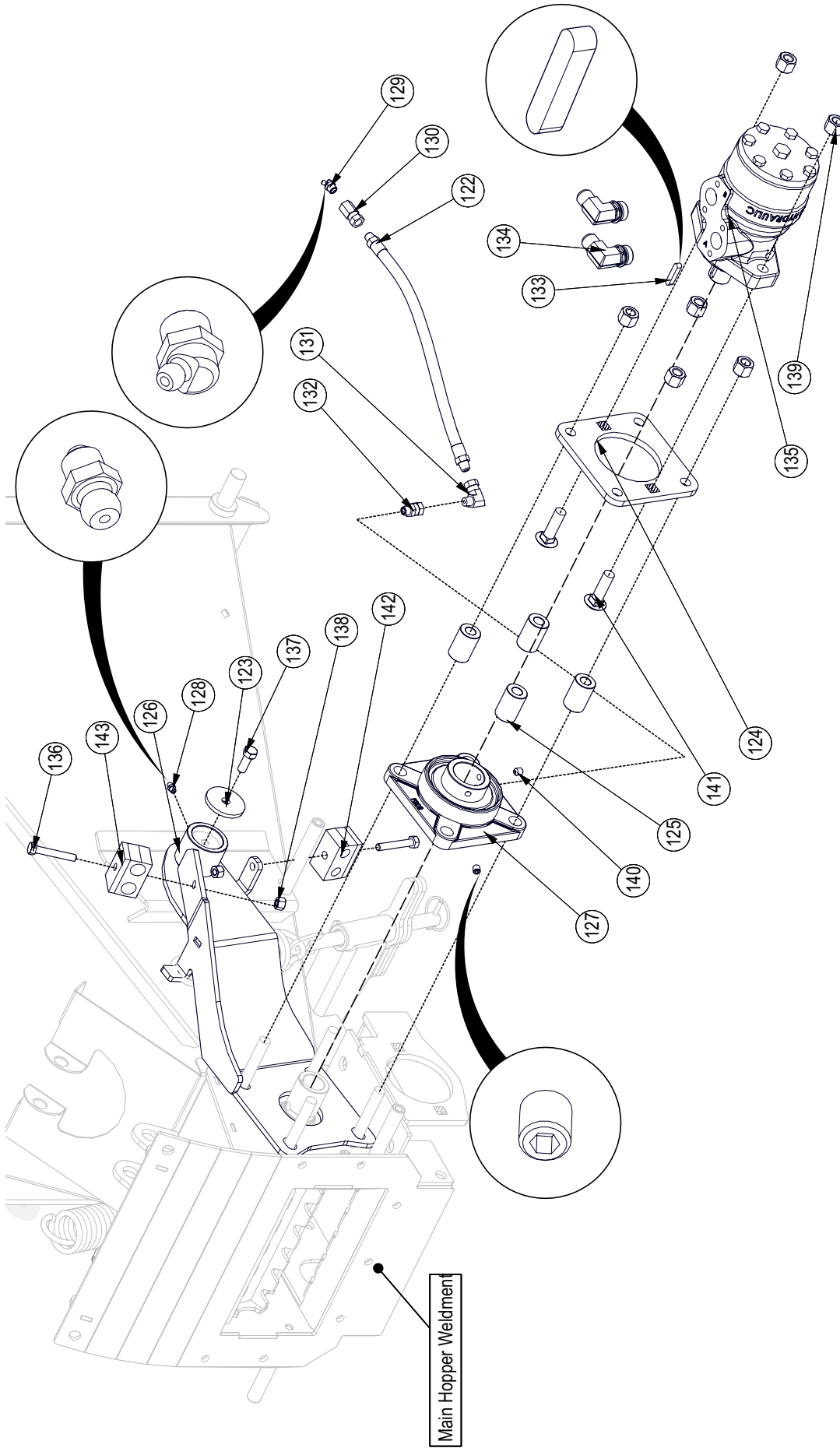


BOM ID	Part No.	Description	Qty
116	Z71220	Hex Bolt, 5/16NC x 2"	1
117	Z71310	Hex Bolt, 3/8NC x 1"	1
118	Z72221	Hex Lock Nut, 5/16NC	1
119	Z72251	Hex Lock Nut, 1/2NC	4
120	Z74122	Set Screw, 5/16NF x 3/8"	2
121	Z79462	Double Hose Clamp, 1/2" OD	1

BOM ID	Part No.	Description	Qty
107	1024W602H	Weldment, Roller Pivot Arm RH	1
108	1024L618	Capture Washer	1
109	Z25204	4-Bolt Flange Bearing, 1-1/2" Bore	1
110	Z29202	Grease Zerk 1/4NF	1
111	Z29204	Grease Fitting, 1/8NPT x 45	1
112	Z29302	Straight, FP x FFX 0202	1
114	Z29307	Elbow 90 MP x FFX 0202	1
115	Z29311	Straight, MP x FFX 0202	1

MODELS BX52R, BX52RI

Left Upper Roller Pivot Assembly



BOM ID	Part No.	Description	Qty
138	Z72221	Hex Lock Nut, 5/16NC	2
139	Z72251	Hex Lock Nut, 1/2NC	6
140	Z74122	Set Screw, 5/16NF x 3/8"	2
141	Z76258	Carriage Bolt, 1/2NC x 1-3/4"	2
142	Z79462	Double Hose Clamp, 1/2" OD	1
143	Z79463	Double Hose Clamp, 1/16" OD	1

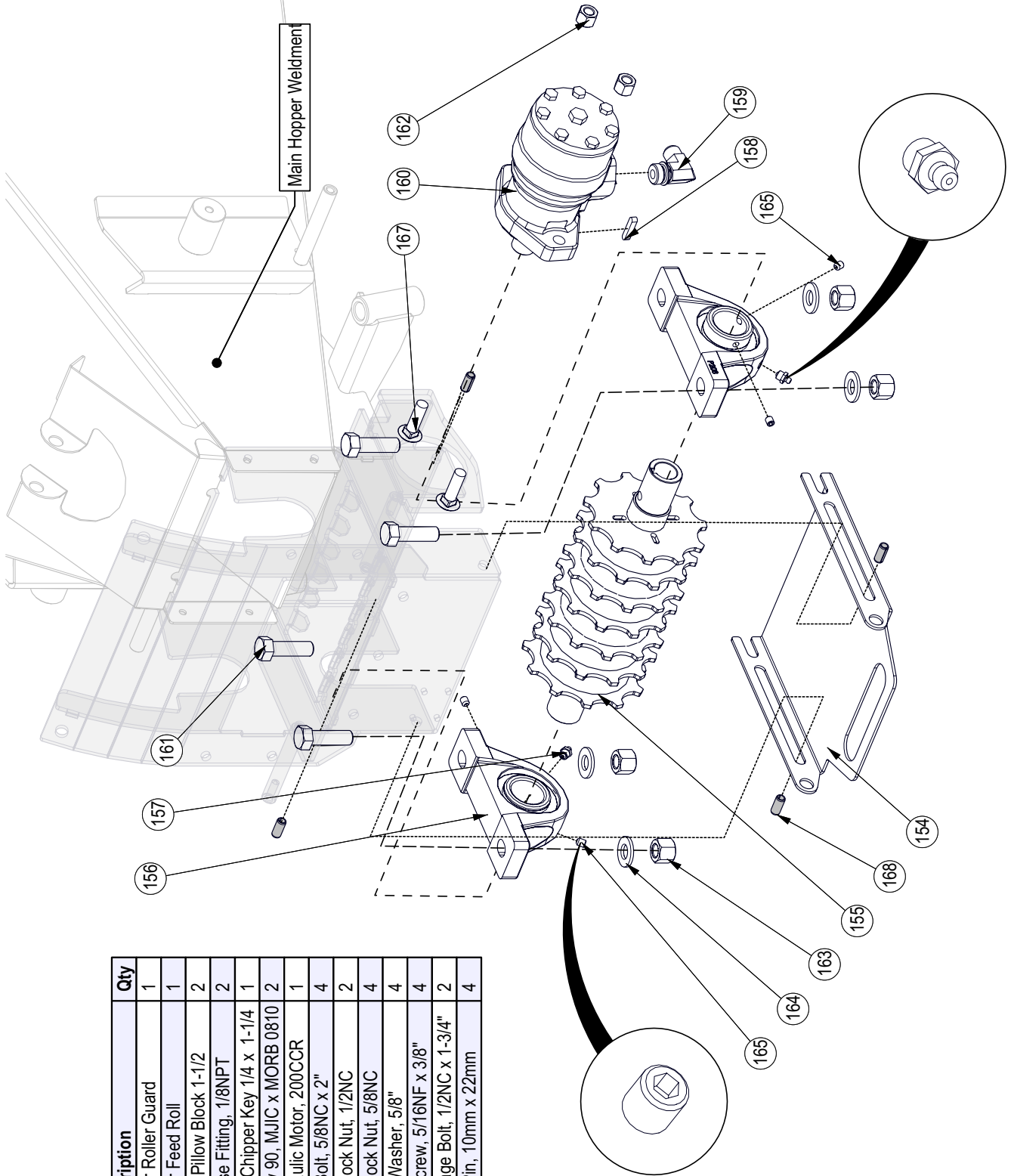
BOM ID	Part No.	Description	Qty
130	Z29302	Straight, FP x FPX 0202	1
131	Z29307	Elbow 90 MP x FPX 0202	1
132	Z29311	Straight, MP x FPX 0202	1
133	Z46594	Blind Chipper Key 1/4 x 1-1/4	1
134	Z51658	Elbow 90, MJIC x MORB 0810	2
135	Z54102	Hydraulic Motor, 200CCR	1
136	Z71220	Hex Bolt, 5/16NC x 2"	2
137	Z71310	Hex Bolt, 3/8NC x 1"	1

BOM ID	Part No.	Description	Qty
122	1024F502	1/4" Grease Whip, MP02 x MP02 x 1 1/4"	1
123	1024L618	Capture Washer	1
124	1024L771	Motor Bearing Interface	4
125	1024M505	Motor Bearing Spacer	1
126	1024W602	Weldment, Roller Pivot Arm LH	1
127	Z25204	4-Bolt Flange Bearing, 1-1/2" Bore	1
128	Z29202	Grease Zerk 1/4NF	1
129	Z29204	Grease Fitting, 1/8NPT x 45	1

MODELS BX52R, BX52RI

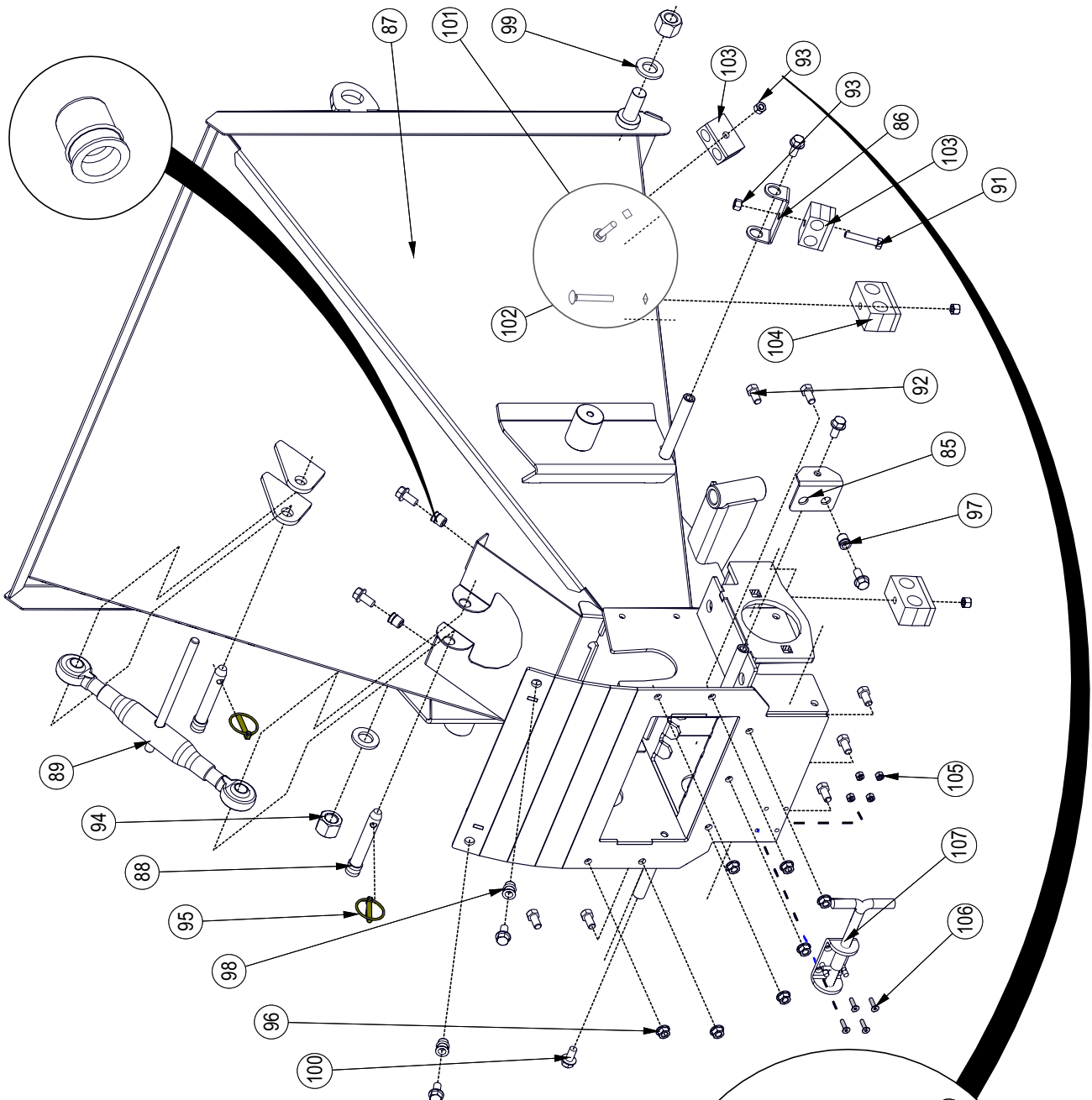
Lower Roller Assembly

BOM ID	Part No.	Description	Qty
154	1024L774	Lower Roller Guard	1
155	1024W605	Lower Feed Roll	1
156	Z24101	P208 Pillow Block 1-1/2	2
157	Z29201	Grease Fitting, 1/8NPT	2
158	Z46594	Blind Chipper Key 1/4 x 1-1/4	1
159	Z51658	Elbow 90, MJIC x MORB 0810	2
160	Z54102	Hydraulic Motor, 200CCR	1
161	Z71620	Hex Bolt, 5/8NC x 2"	4
162	Z72251	Hex Lock Nut, 1/2NC	2
163	Z72261	Hex Lock Nut, 5/8NC	4
164	Z73161	SAE Washer, 5/8"	4
165	Z74122	Set Screw, 5/16NF x 3/8"	4
167	Z76258	Carriage Bolt, 1/2NC x 1-3/4"	2
168	Z14301	Roll Pin, 10mm x 22mm	4

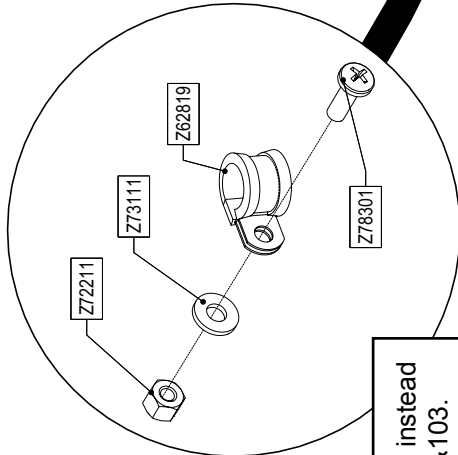


MODELS BX52R, BX52RI

Main Hopper Assembly



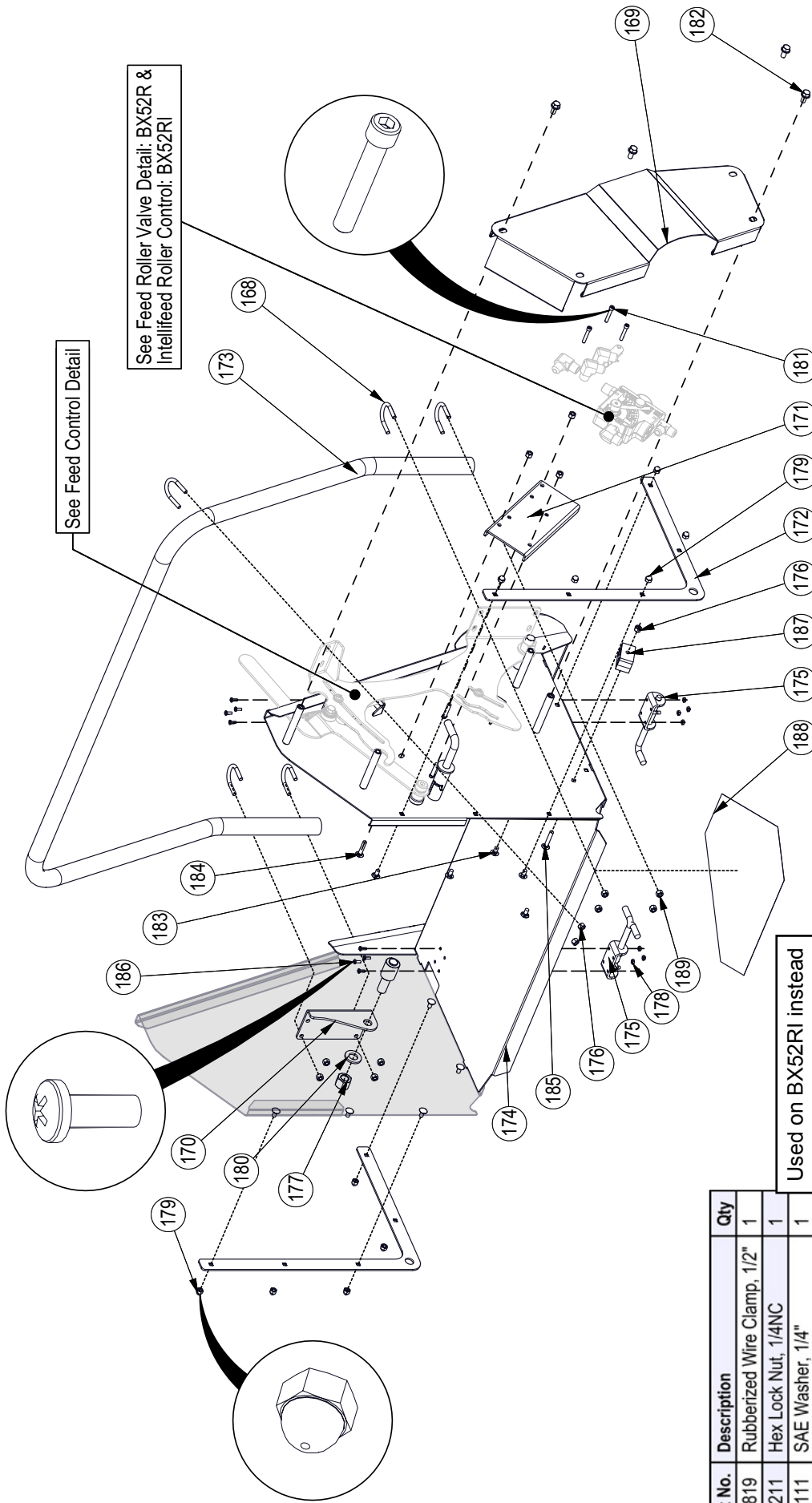
BOM ID	Part No.	Description	Qty
85	1023L300	Bridge Guard Mount	1
86	1024L775	Clamp Mount	1
87	1024W601	Main Hopper Weldment	1
88	Z11111	Toplink Pin, 5/8" x 2-3/4"	2
89	Z11501	Toplink, Cat 0 x 10-1/2" x 16"	1
91	Z71217	Hex Bolt, 5/16NC x 1-3/4"	1
92	Z71307	Hex Bolt, 3/8NC x 3/4"	7
93	Z72221	Hex Lock Nut, 5/16NC	4
94	Z72271	Hex Lock Nut, 3/4NC	2
95	Z12120	Lynch Pin, 1/4"	2
96	Z72531	Serrated Flange Locknut, 3/8NC	7
97	Z72958	Rivet Nut, 3/8NC x 150	3
98	Z72959	Rivet Nut, 3/8NC x 312	2
99	Z73171	SAE Washer, 3/4"	2
100	Z76133	Flange Bolt, 3/8NC x 3/4"	9
101	Z76227	Carriage Bolt, 5/16NC x 1-3/4"	1
102	Z76228	Carriage Bolt, 5/16NC x 2-1/4"	2
103	Z79463	Double Hose Clamp, 11/16" OD	2
104	Z79464	Double Hose Clamp, 13/16" OD	2
105	Z72204	Hex Lock Nut, #10NF	4
106	Z75203	FHCS, #10NF x 3/4"	4
107	Z18207	Spring Latch Pin 1/2 x 1" Stroke	1



Used on BX52RI instead of # 93, 101 & 103.

Part No.	Description	Qty
Z62819	Rubberized Wire Clamp, 1/2"	1
Z72211	Hex Lock Nut, 1/4NC	1
Z73111	SAE Washer, 1/4"	1
Z78301	Machine Screw, 1/4NC x 3/4"	1

Feed Table Assembly



See Feed Control Detail

See Feed Roller Valve Detail: BX52R & IntelliFeed Roller Control: BX52RI

Used on BX52RI instead of # 176, 185 & 187.

Part No.	Description	Qty
Z62819	Rubberized Wire Clamp, 1/2"	1
Z72211	Hex Lock Nut, 1/4NC	1
Z73111	SAE Washer, 1/4"	1
Z78301	Machine Screw, 1/4NC x 3/4"	1

BOM ID	Part No.	Description	Qty
168	1015S538	U-bolt, Bearing Adapter	5
169	1022L256	Valve Guard	1
170	1022L271	Feed Control Pivot	1
171	1022W217	Valve Mount Weldment	1
172	1024L724	Fold Table Trap Plate	2
173	1024S703	Feed Control Handle	1
174	1024W704	Feed Table Weldment	1
175	Z18207	Spring Latch Pin 1/2 x 1" Stroke	2

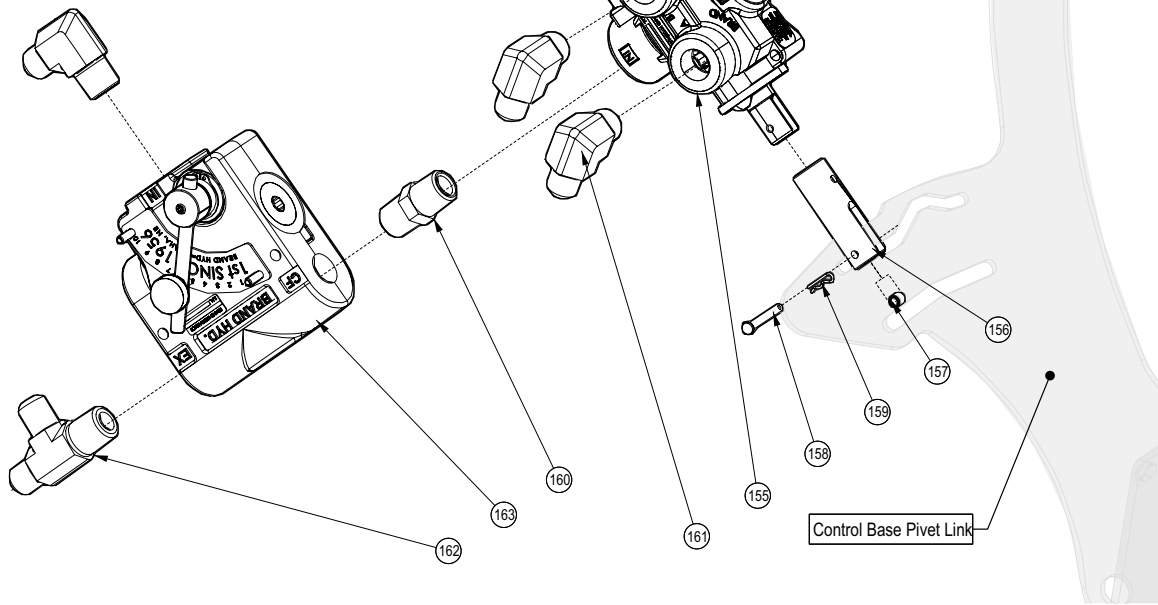
BOM ID	Part No.	Description	Qty
176	Z72221	Hex Lock Nut, 5/16NC	4
177	Z72271	Hex Lock Nut, 3/4NC	1
178	Z72204	Hex Lock Nut, #10NF	8
179	Z72914	Acorn Nut, 5/16NC	10
180	Z73171	SAE Washer, 3/4"	1
181	Z75116	SHCS, 1/4NC x 1-1/2"	3
182	Z76133	Flange Bolt, 3/8NC x 3/4"	3
183	Z76222	Carriage Bolt, 5/16NC x 5/8"	10

BOM ID	Part No.	Description	Qty
184	Z76224	Carriage Bolt, 5/16NC x 1-1/2"	3
185	Z76227	Carriage Bolt, 5/16NC x 1-3/4"	1
186	Z78316	Machine Screw, #10NF x 3/4"	8
187	Z79463	Double Hose Clamp, 1 1/16" OD	1
188	Z94601	Decal, SMV	1
189	Z72521	Serrated Flange Locknut, 5/16NC	10

Roller Valve Detail

MODEL BX52R

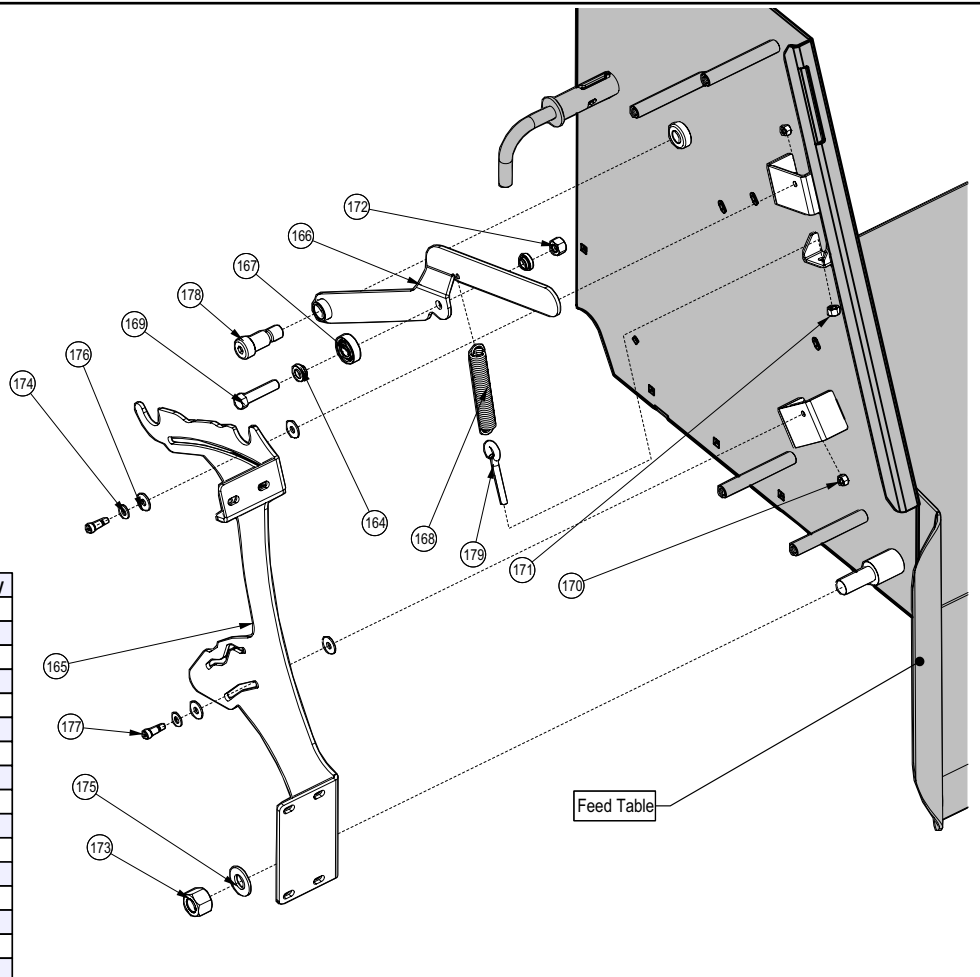
BOM ID	Description	Description	Qty
155	Z56215	Spring Ctr Low Force Directional Valve	1
156	1022M213	Bearing Yoke	1
157	1022M217	Solid Bearing	1
158	Z11301	Clevis Pin 3/16 x 1-3/8"	1
159	Z12210	Hitch Pin Clip, 1/16	1
160	Z51122	Nipple, MP x MP 0808	1
161	Z51451	#8JIC x 1/2NPT 90 Elbow	4
162	Z51487	Tee MJIC x MP x MJIC 080808	1
163	Z56305	Brand PFC 0-8 GPM	1



Feed Roller Control Detail

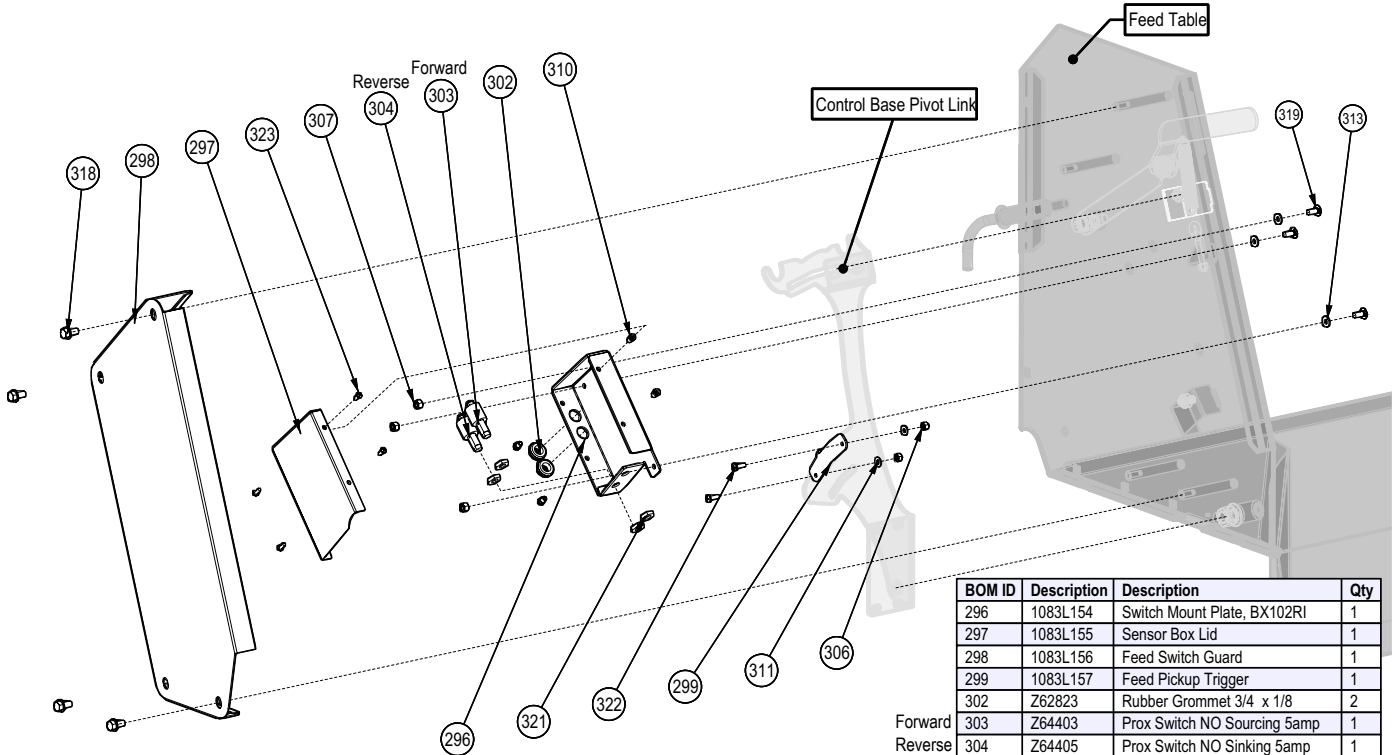
MODELS BX52R, BX52RI

BOM ID	Description	Description	Qty
164	1015M537	Bushing, Bearing	2
165	1022L239	Control Base Pivot Link	1
166	1022W224	Detent Reset Weldment	1
167	Z21203	Ball Bearing 6202 RS	1
168	Z31401	Spring 3/4 x 4" Heavy	1
169	Z71420	Hex Bolt, 7/16NC x 2	1
170	Z72211	Hex Lock Nut, 1/4NC	2
171	Z72221	Hex Lock Nut, 5/16NC	1
172	Z72241	Hex Lock Nut, 7/16NC	1
173	Z72271	Hex Lock Nut, 3/4NC	1
174	Z73122	Flat Washer, 5/16	2
175	Z73171	Flat Washer, 3/4"	1
176	Z73222	PTFE Flat Washer, 5/16 x 0.080"	4
177	Z75522	Shoulder Bolt, 5/16 x 1/2"	2
178	Z75574	Shoulder Bolt, 3/4 x 1	1
179	Z76522	Eye Bolt 5/16NC x 2	1



Intellifeed Roller Control Components

MODEL BX52RI

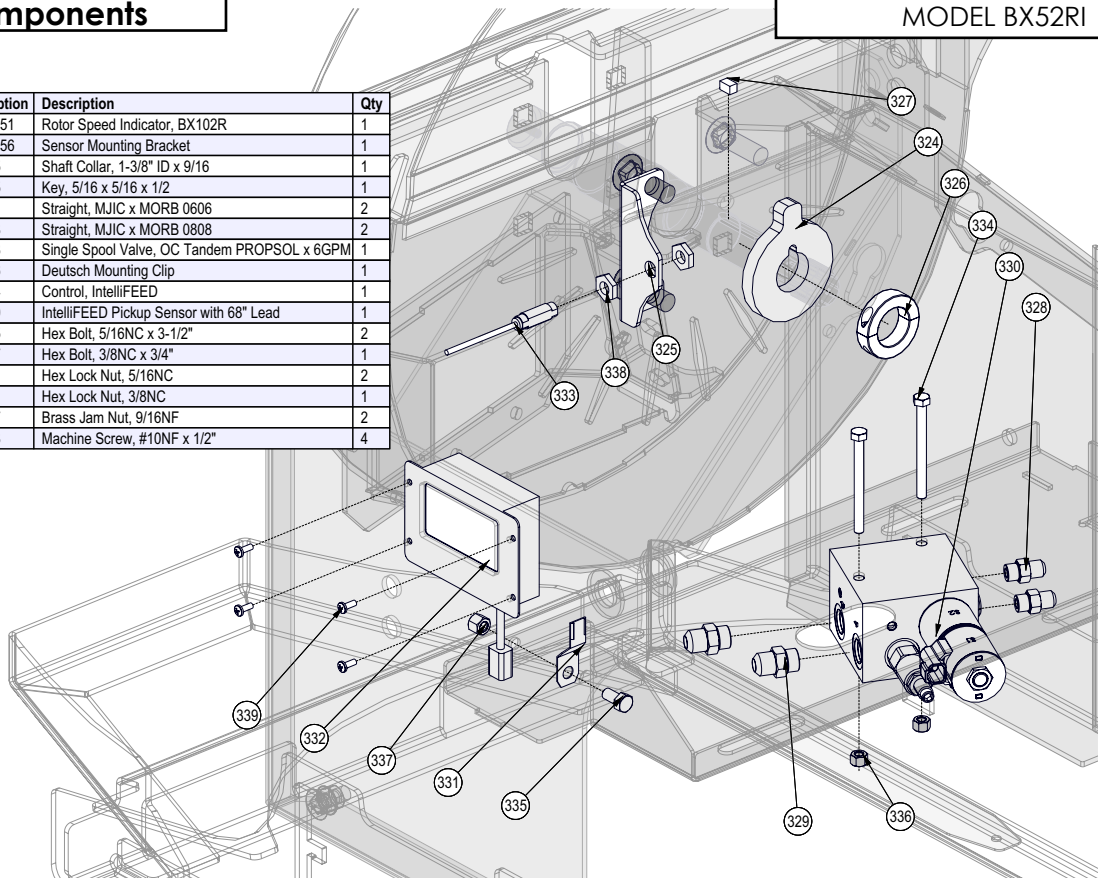


BOM ID	Description	Description	Qty
296	1083L154	Switch Mount Plate, BX102RI	1
297	1083L155	Sensor Box Lid	1
298	1083L156	Feed Switch Guard	1
299	1083L157	Feed Pickup Trigger	1
302	Z62823	Rubber Grommet 3/4 x 1/8	2
303	Z64403	Prox Switch NO Sourcing 5amp	1
304	Z64405	Prox Switch NO Sinking 5amp	1
306	Z72211	Hex Lock Nut, 1/4NC	4
307	Z72221	Hex Lock Nut, 5/16NC	4
310	Z72954	Riv-Nut #10-32NF - 130	4
311	Z73111	Flat Washer, 1/4	2
313	Z73123	Rubber Flat Washer, 5/16 x 0.093"	3
318	Z76133	Flange Bolt, 3/8NC x 3/4	4
319	Z76221	Carriage Bolt, 5/16NC x 3/4	3
321	Z77282	Jam Nut, M14 x 1.5	4
322	Z78301	Machine Screw, 1/4-20NC x 3/4	2
323	Z78303	Machine Screw, #10-32NF x 1/2	4

Intellifeed Components

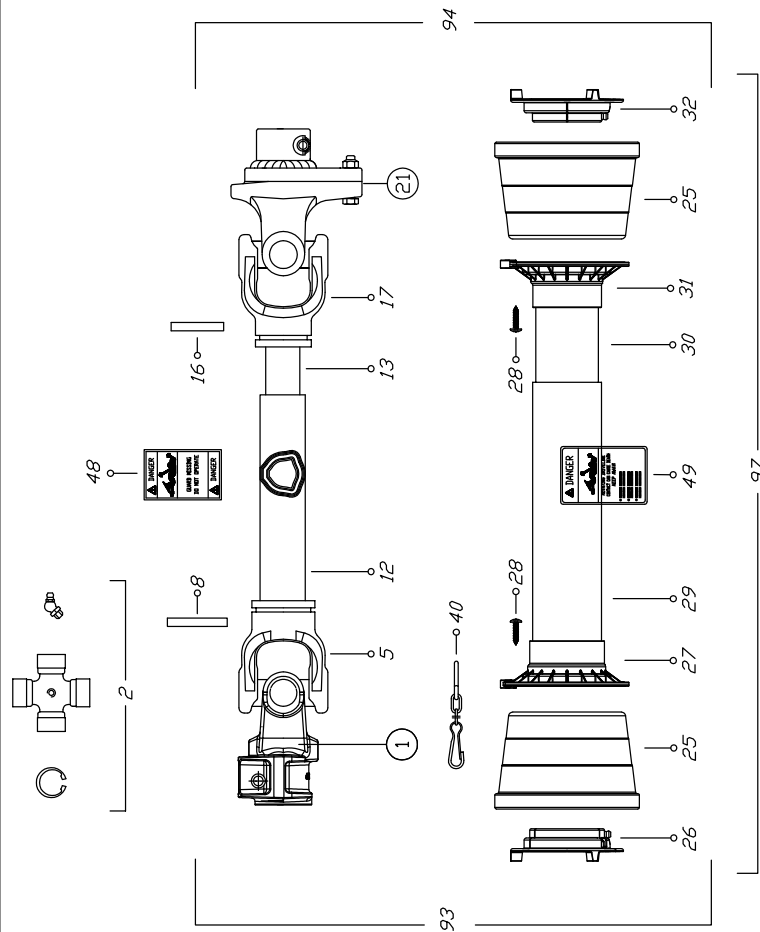
MODEL BX52RI

BOM ID	Description	Description	Qty
324	1023L751	Rotor Speed Indicator, BX102R	1
325	1024L556	Sensor Mounting Bracket	1
326	Z46315	Shaft Collar, 1-3/8" ID x 9/16	1
327	Z46545	Key, 5/16 x 5/16 x 1/2	1
328	Z51641	Straight, MJIC x MORB 0606	2
329	Z51643	Straight, MJIC x MORB 0808	2
330	Z56508	Single Spool Valve, OC Tandem PROPSOL x 6GPM	1
331	Z62816	Deutsch Mounting Clip	1
332	Z66204	Control, IntellIFEED	1
333	Z66210	IntelliFEED Pickup Sensor with 68" Lead	1
334	Z71235	Hex Bolt, 5/16NC x 3-1/2"	2
335	Z71307	Hex Bolt, 3/8NC x 3/4"	1
336	Z72221	Hex Lock Nut, 5/16NC	2
337	Z72231	Hex Lock Nut, 3/8NC	1
338	Z72357	Brass Jam Nut, 9/16NF	2
339	Z78303	Machine Screw, #10NF x 1/2"	4

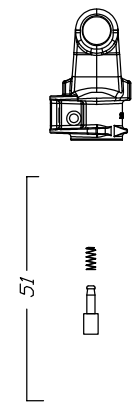


Binacchi SPARE PARTS LIST : B5D056US098001

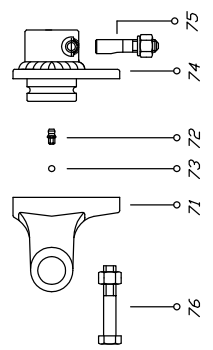
POS.	DESCRIPTION	Q.	Part #
01	YOKE	1	0800503
02	CROSS JOURNAL ASS.	2	08205
05	OUTER TUBE YOKE	1	08005021
08	FLEXIBLE PIN	1	098701075
12	CM. 100 CARDAN TUBE(*)	1	09881523100
13	CM. 100 CARDAN TUBE(*)	1	09881454100
16	FLEXIBLE PIN	1	0987001065
17	INNER TUBE YOKE	1	08005011
21	SHEAR BOLT M10X1.5X55	1	Z19407 (5 Pack)
25	CONE SHIELD BELL 05-06	2	021906C001
26	OUTER BEARING 05	1	025505C001
27	OUTER BASE CONE 05-06	1	025406C001
28	SCREW	6	0998052242
29	OUTER SAFETY TUBE	1	0988981NB5056
30	INNER SAFETY TUBE	1	0988975NB5056
31	INNER BASE CONE 05-06	1	025406C002
32	INNER BEARING 05	1	025505C002
40	CHAIN	1	0252000001
48	LABEL DANGER OUTER DRIVE TUBE	1	09872006
49	EXTERNAL SHIELD LABEL	1	09872003
51	COMPLETE PUSH BUTTTON	1	0986014047
71	YOKE FOR LB5	1	08896905
72	GREASE NIPPLE	1	0984010150
73	STEEL BALL	23	098680104
74	HUB	1	088965A60
75	PUSH PIN SET	1	0986014075
76	NUT AND BOLT M10 x 1.5 x 55 10.9	1	Z19407 (5 Pack)
93	OUTER HALF SHAFT	1	B5056US2
94	INNER HALF SHAFT	1	B5056US1098001
97	SAFETY GUARD	1	083US05056



(1)



(21)



VIETATE LE RIPRODUZIONI NON AUTORIZZATE
 NOT PERMITTED AL RIGHTS RESERVED

TOUTE REPRODUCTION NON AUTORISEE EST INTERDITE
 NIET GEMAKTE VERVEELFAELTINGEN SIND UNTOELASSIG

CODICE C.E.D.
 B8D061US098001

DATA
 29/01/10

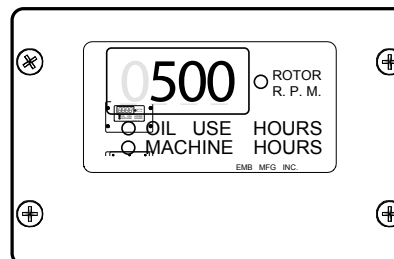
Intellifeed Settings

Programming Hints: The factory settings provide good overall performance for the BX chippers, however you may under certain circumstances, choose to customize performance. Here are some helpful hints:

- For heavier brush, decrease the upper flow percentage for slower feed speed.
- For lighter brush, increase the upper flow percentage for faster feed speed.
- If the chipper is stalling before the feed rolls stop, increase the rotor floor setting.
- If you prefer more aggressive feeding with faster feed and more stops, increase the lower flow percentage.

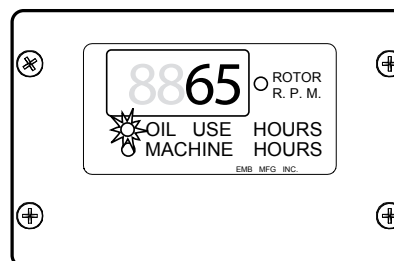
1. Programming Upper RPM Limit (Ceiling):

- **factory setting is :**
 - **500 RPM for 540 RPM operating speed**
 - **950 RPM for 1000 RPM operating speed**
- Press mode button twice. Digital readout will display current upper limit setting. This represents the RPM at which the Rapid Recovery Auto Reverse will re-start the feed rolls after a suspension.
- Oil Use indicator will flash. Increase or decrease setting using program buttons



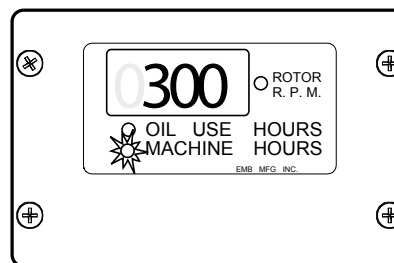
2. Programming Upper Flow Percentage:

- **factory setting is 65%**
- Press mode button once more. Digital readout will display current upper flow setting. This represents the percent of hydraulic flow that will be sent to the feed rolls (Feed speed.).
- Oil Use indicator will flash. Increase or decrease setting using program buttons, do not set above 80 %



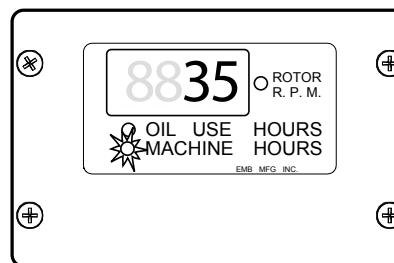
3. Programming Lower RPM Limit (Floor) :

- **Factory setting is:**
 - **300 RPM for 540 RPM operating speed**
 - **650 RPM for 1000 RPM operating speed**
- Press mode button once more. Digital readout will display current lower limit setting. This represents the rotor RPM at which the Rapid Recovery Auto Reverse will reverse and suspend the feed rolls.
- Machine hours indicator will flash. Increase or decrease setting using program buttons.

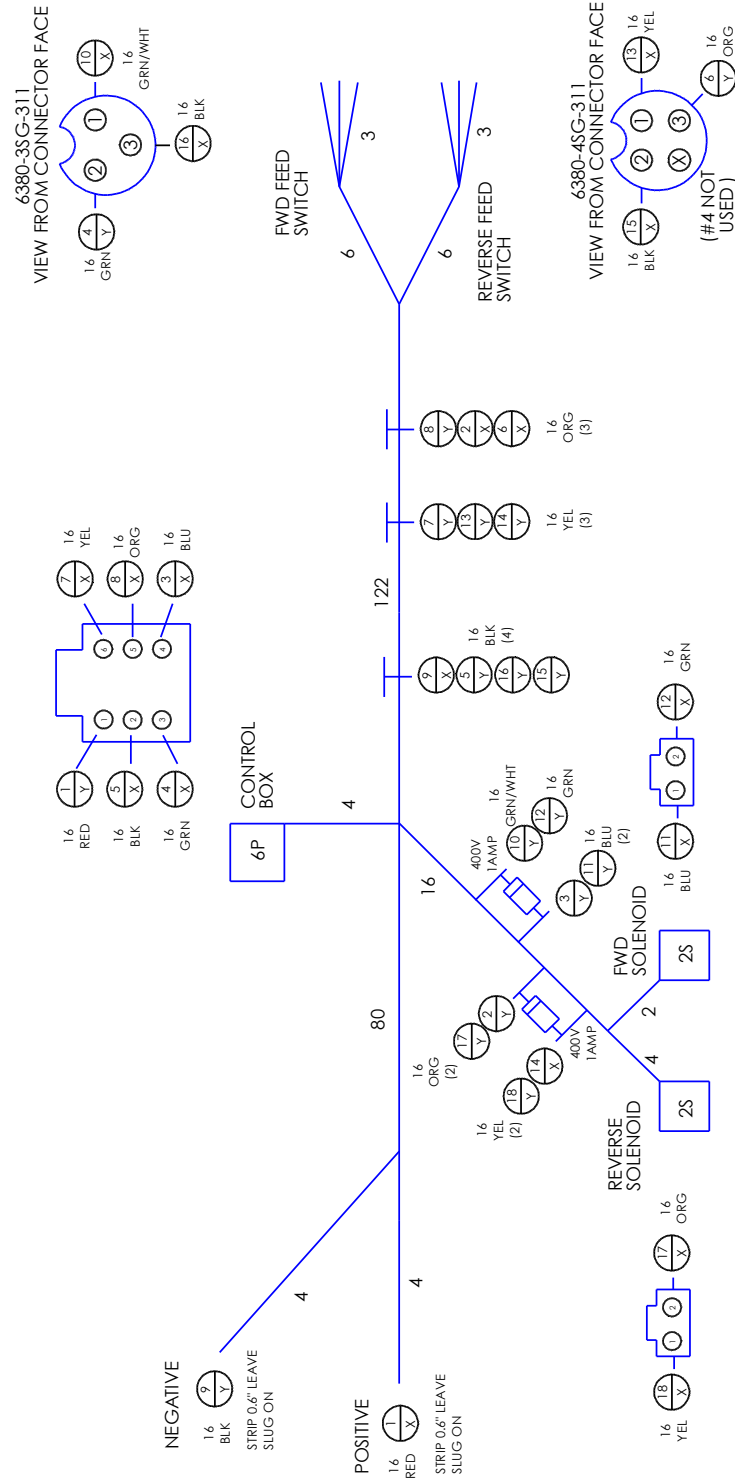


4. Programming Lower Flow Percentage:

- **factory setting is 35%**
- Press mode button once more. Digital readout will display current lower flow setting. This represents the percent of hydraulic flow that will be sent to the feed rolls (Feed speed.).
- Machine hours indicator will flash. Increase or decrease setting using program buttons, do not set below 25%



NOTE: HARNESS IS BRAIDED

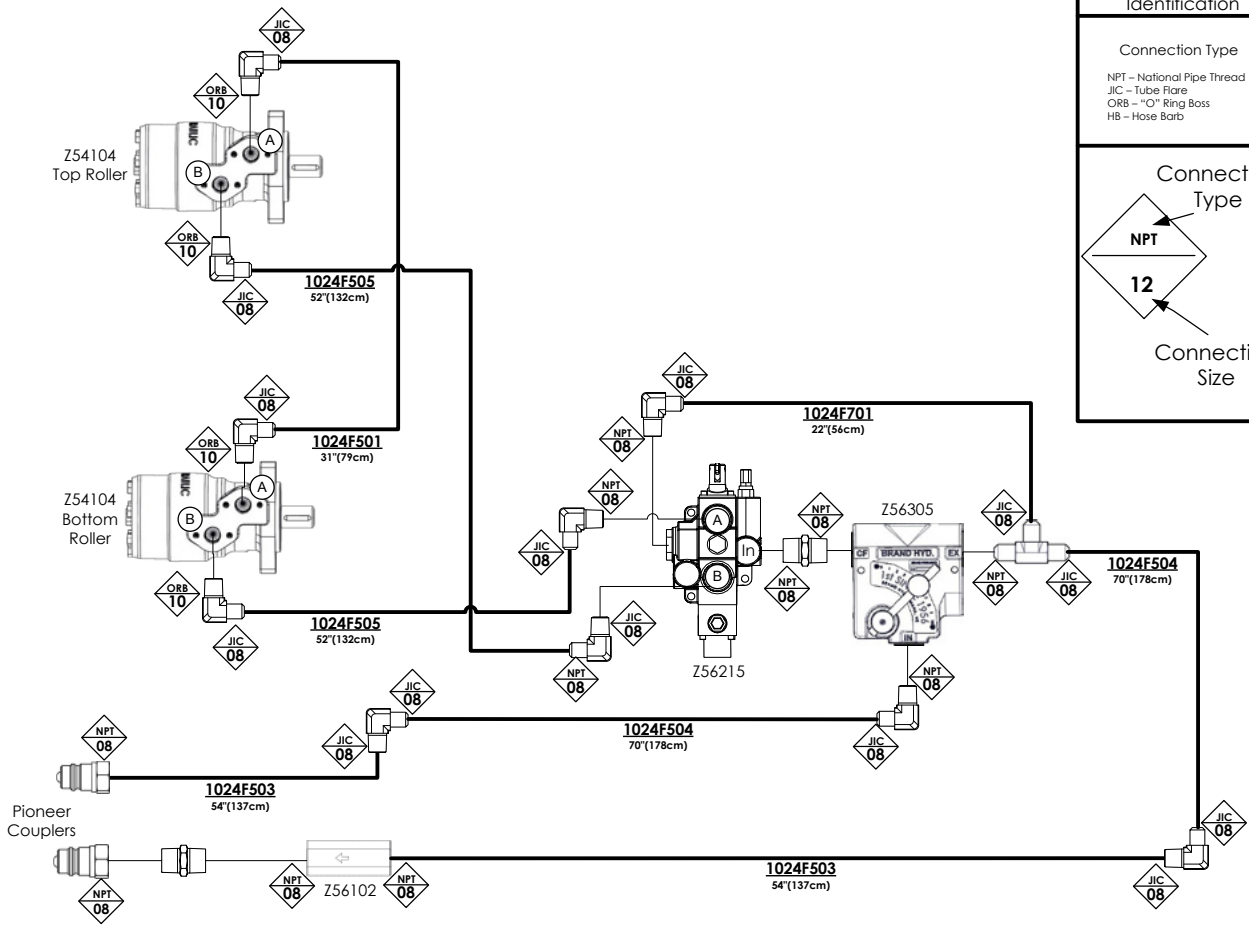


Hydraulic Hose Parts List

The Chart below is a complete list of hydraulic hoses for all models of the BX52R & BX52RI. For information on your model and its hose connections please review the hydraulic schematics on the following pages.

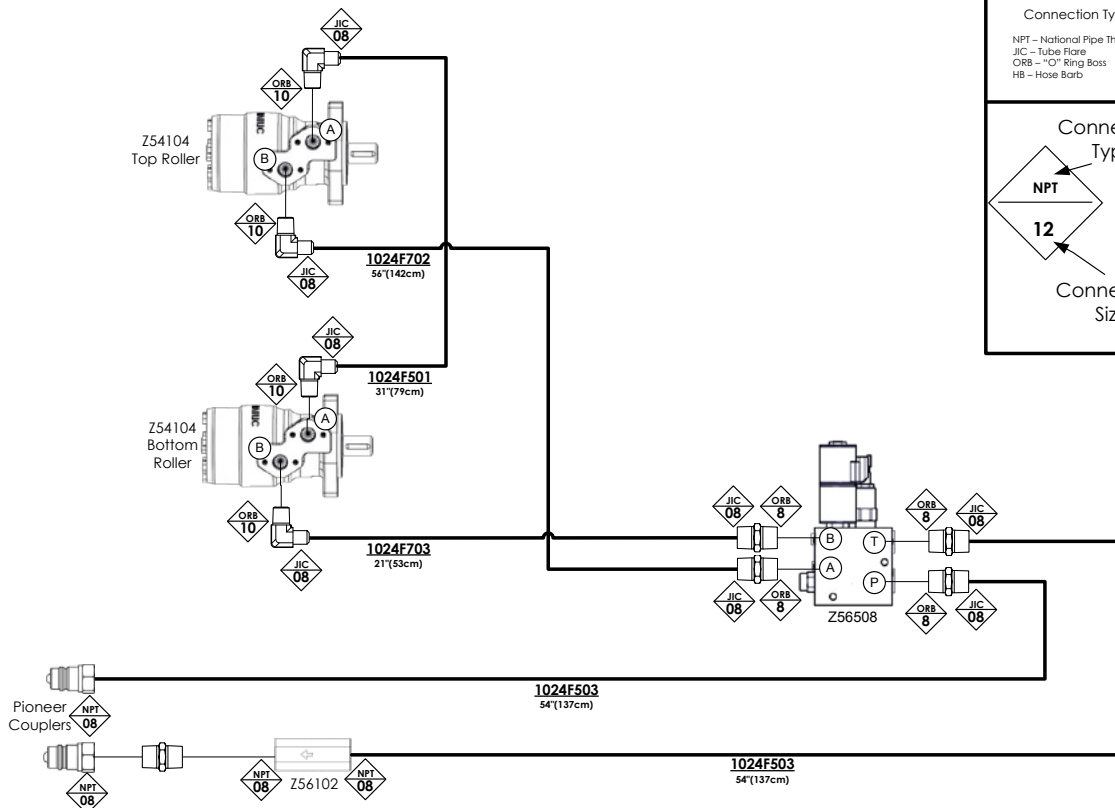
PARTNUMBER		Description	QTY	
With Protective Sleeve	With Out Protective Sleeve		BX52R	BX52RI
1024F501SC	1024F501	3/8" Hose, FJIC08 x FJIC08 x 31"	1	1
1024F503SC	1024F503	1/2" Hose, FJIC08 x MP08 x 54"	2	2
1024F504SC	1024F504	1/2" Hose, FJIC08 x FJIC08 x 70"	2	
1024F505SC	1024F505	3/8" Hose, FJIC08 x FJIC08 x 52"	2	
1024F703SC	1024F703	3/8" Hose, FJIC08 x 90FJIC06 x 21"		2
Hoses with Protective Sleeves are required for EU models				

Hydraulic Schematic BX52R



Fitting Identification	
Connection Type	
NPT - National Pipe Thread JIC - Tube Flare ORB - "O" Ring Boss HB - Hose Barb	
Connection Type	
Connection Size	

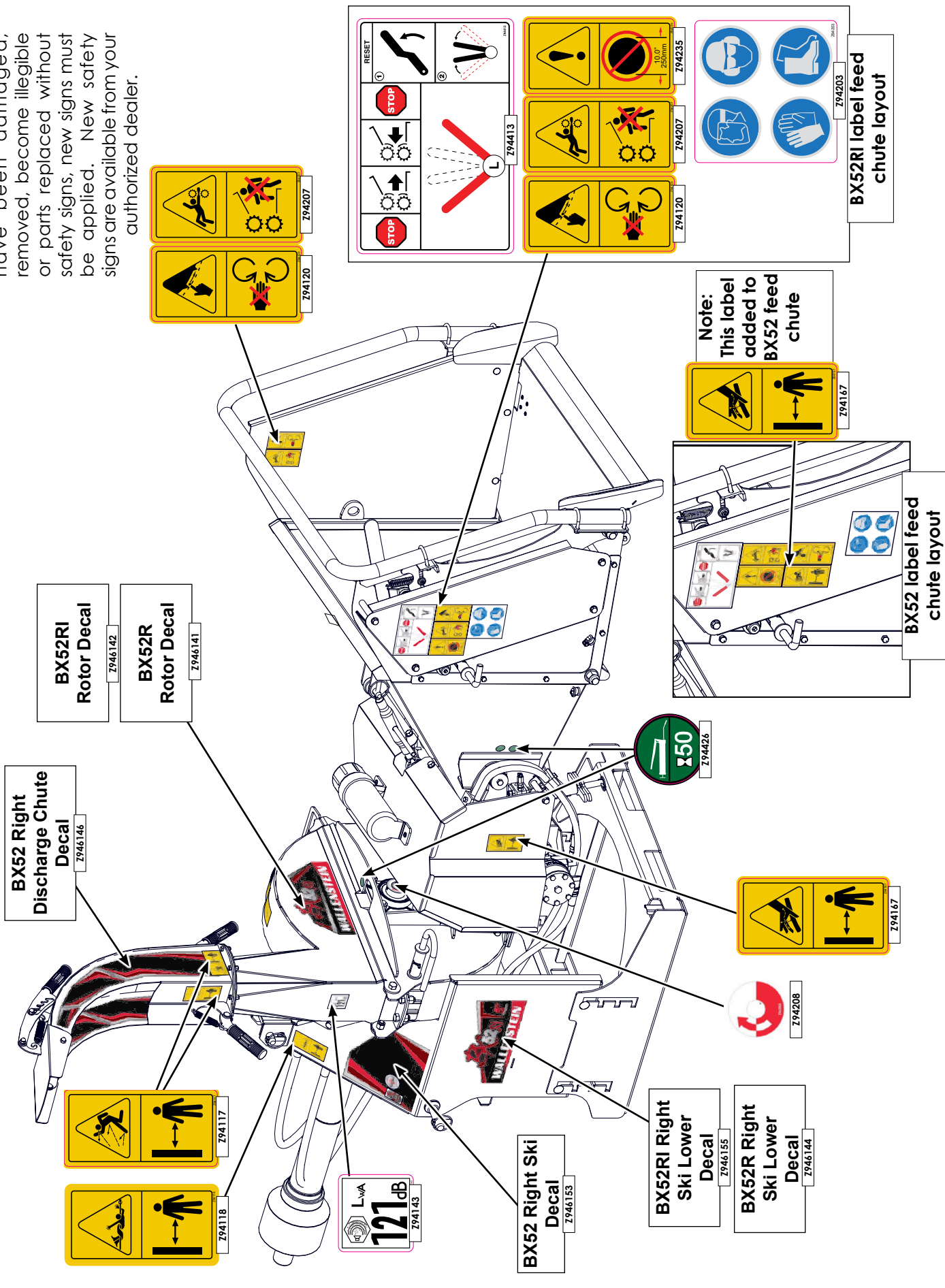
Hydraulic Schematic BX52RI

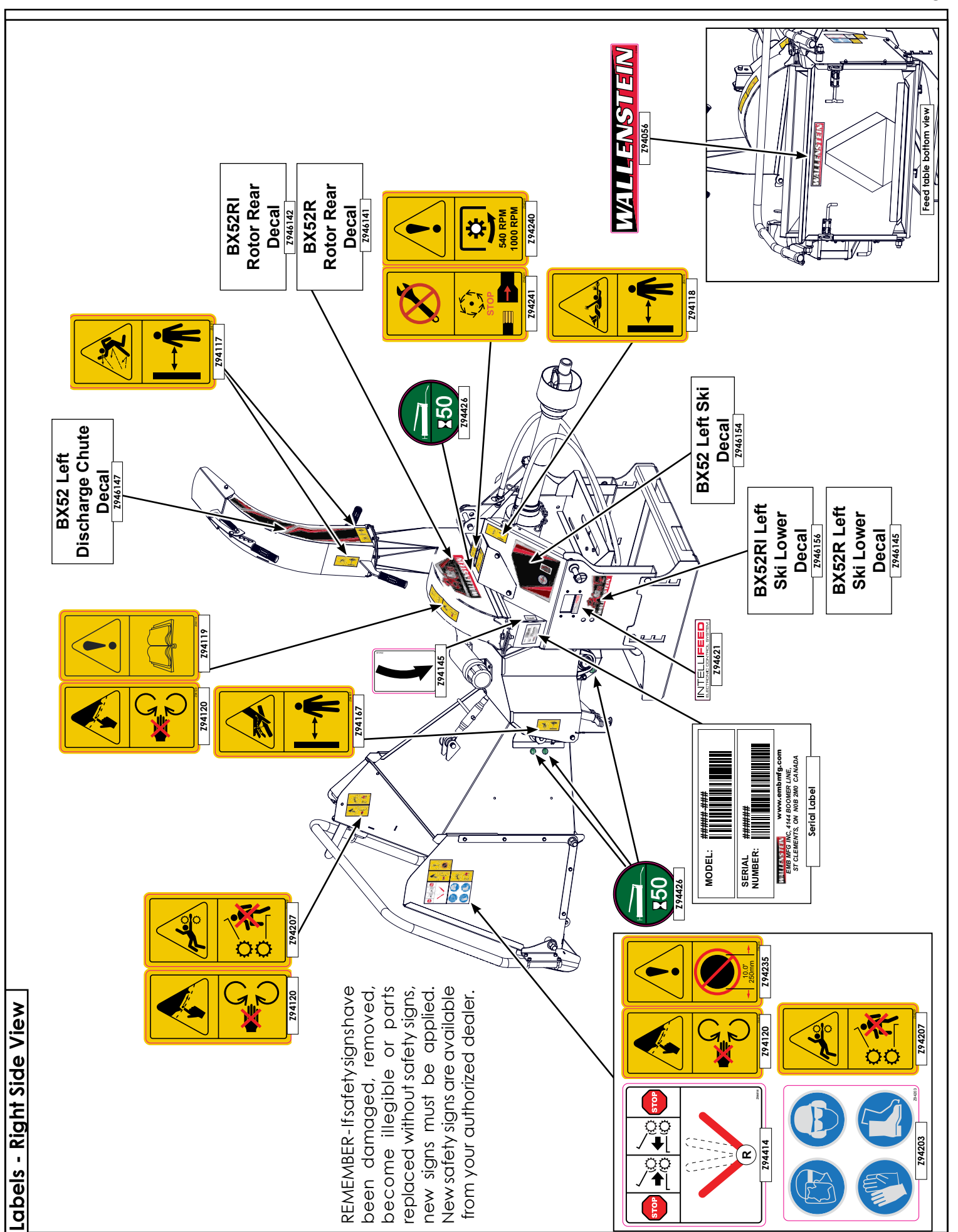


Fitting Identification	
Connection Type	
NPT - National Pipe Thread JIC - Tube Flare ORB - "O" Ring Boss HB - Hose Barb	
Connection Type	
Connection Size	

Labels - Left Side View

REMEMBER - If safety signs have been damaged, removed, become illegible or parts replaced without safety signs, new signs must be applied. New safety signs are available from your authorized dealer.



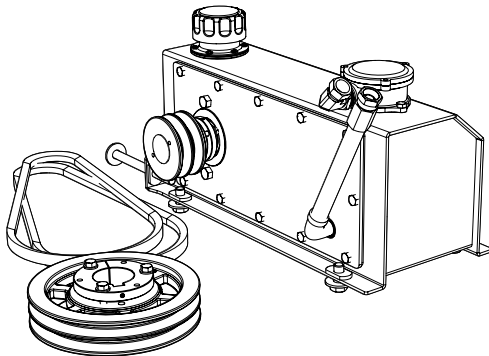


Labels - Right Side View

REMEMBER - If safety signs have been damaged, removed, become illegible or parts replaced without safety signs, new signs must be applied. New safety signs are available from your authorized dealer.

Accessories

Call your dealer for pricing and availability



#C3540 SELF CONTAINED PTO POWER PACK

For model: **BX52R & BX52RI**

Easy to install

For tractors without available hydraulics, the optional power-pack mounts on the chipper just under the PTO shaft, and provides you with the means to operate the hydraulic feed hopper on model BX52R and BX52RI.



#Z97072 BXR SERIES 3 POINT HITCH WOOD CHIPPER

Available as a download at
www.wallensteinequipment.com