

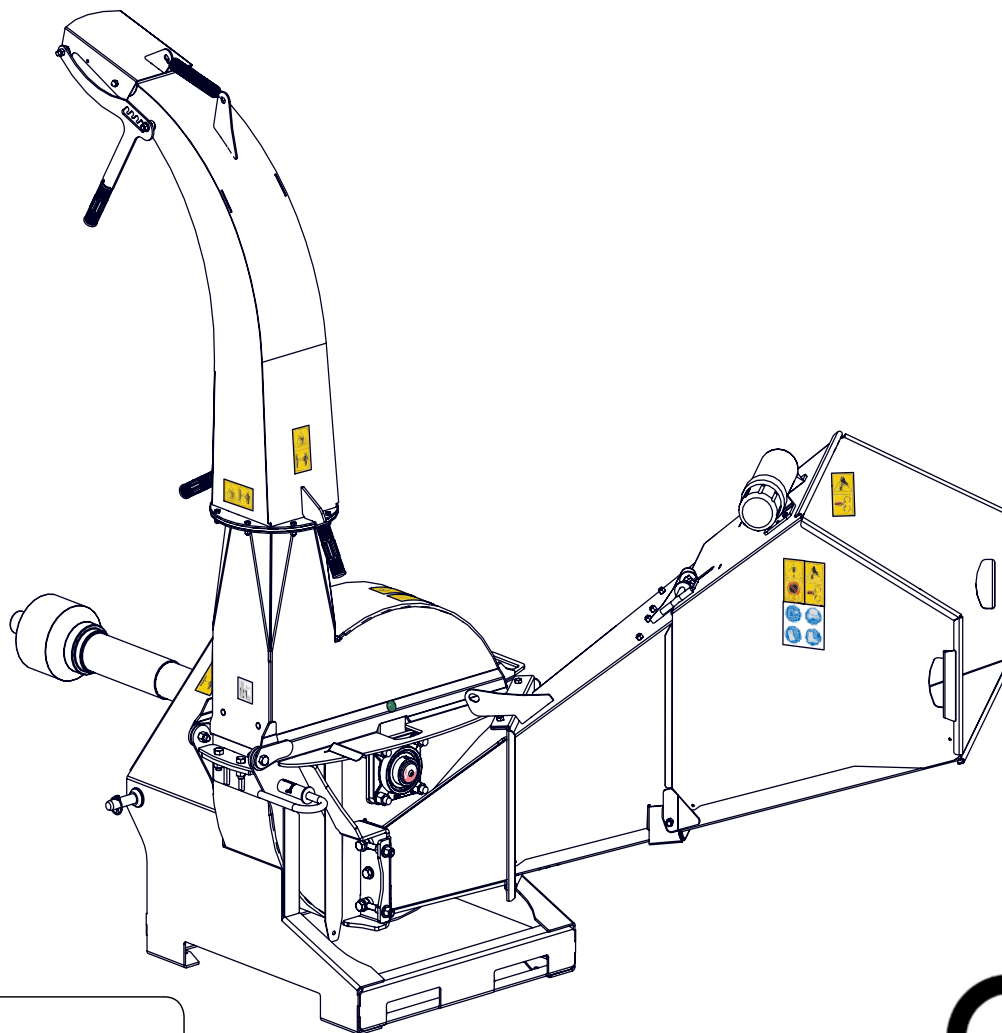


EMB Manufacturing Inc.  
4144 Boomer Line · St. Clements, On · N0B 2M0 · Canada  
Ph: (519) 699-9283 · Fax: (519) 699-4146  
[www.wallensteinequipment.com](http://www.wallensteinequipment.com)

# BX102S 3PH Self Feed Chipper

## Parts Manual

Starting with S/N 1102S00001



Refer to the operators  
manual for safe  
operation and  
maintenance



1025T500 BX102S RevA1 Parts Book.150615  
Rev # 130417

## Foreword

EMB Mfg. has prepared this parts manual to assist customers in ordering quality OEM replacement parts.

Proper and regular service and replacing old, worn or broken parts with the correct OEM parts are essential to prolonging the life of your EMB product. Please refer to this manual before ordering any replacement parts.

All information contained in this parts manual is based on the latest product specification available at the time of printing this manual. If your product differs from the specifications contained within this manual contact EMB Mfg. for information.

EMB reserves the right to alter specifications on their products at any time.

Reproduction of this parts manual of any kind is prohibited without prior written permission from EMB Mfg.

For parts and information please contact your dealer. If your dealer is no longer available please go to our website: <http://www.wallensteinequipment.com> and click on "FIND A DEALER NEAR YOU" for information on a local dealer.

## Table of Contents

**Bolt Torque..... 5**

**Rotor Assembly ..... 6**

**Lower Rotor Housing..... 7**

**Feed Chute ..... 8**

**Ledger Knife Detail ..... 9**

**Upper Rotor Housing ..... 9**

**Discharge Chute..... 10**

**PTO Shaft #Z44802..... 11**

**Labels - Left Side View ..... 12**

**Labels - Right Side View ..... 13**

**Accessories..... 14**

Maintenance should be performed by  
trained personnel only.



Refer to the operators  
manual for safe  
operation and  
maintenance

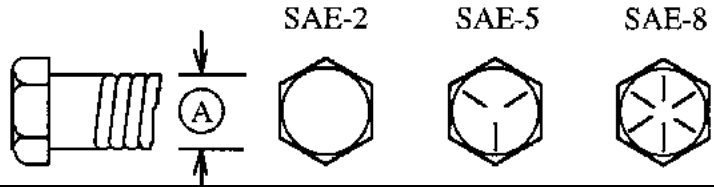
**Bolt Torque**

**CHECKING BOLT TORQUE**

The tables shown below give correct torque values for various bolts and capscrews. Tighten all bolts to the torques specified in chart unless otherwise noted. Check tightness of bolts periodically, using bolt torque chart as a guide. Replace hardware with the same strength bolt.

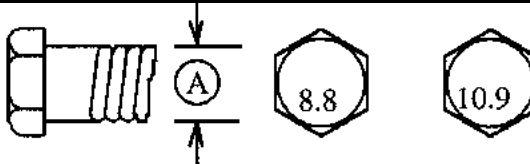
**ENGLISH TORQUE SPECIFICATIONS**

Bolt Diameter "A"	Bolt Torque*					
	SAE 2 (N.m) (lb-ft)		SAE 5 (N.m) (lb-ft)		SAE 8 (N.m) (lb-ft)	
1/4"	8	6	12	9	17	12
5/16"	13	10	25	19	36	27
3/8"	27	20	45	33	63	45
7/16"	41	30	72	53	100	75
1/2"	61	45	110	80	155	115
9/16"	95	60	155	115	220	165
5/8"	128	95	215	160	305	220
3/4"	225	165	390	290	540	400
7/8"	230	170	570	420	880	650
1"	345	225	850	630	1320	970



**METRIC TORQUE SPECIFICATIONS**

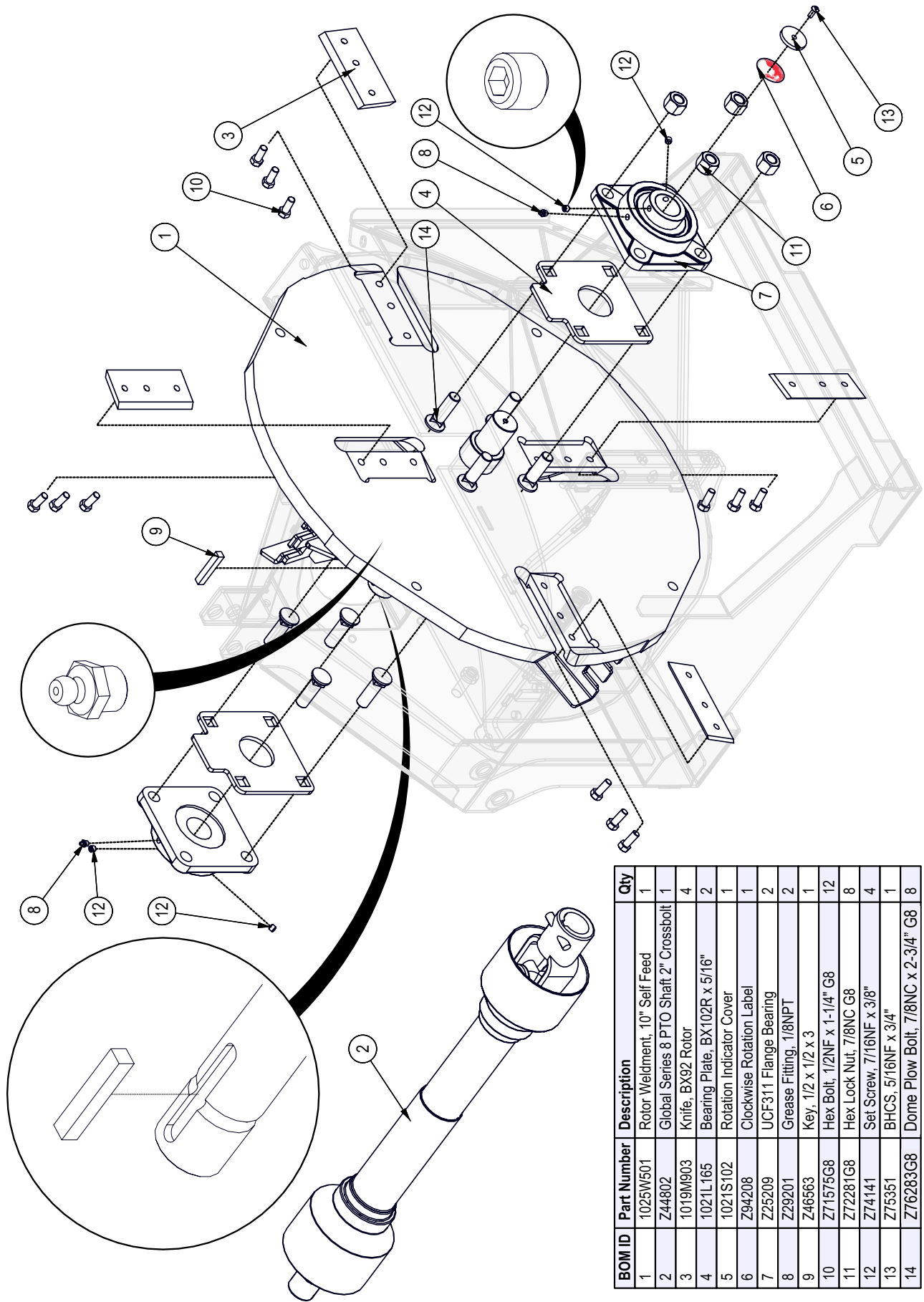
Bolt Diameter "A"	Bolt Torque*			
	8.8 (N.m) (lb-ft)		10.9 (N.m) (lb-ft)	
M3	0.5	0.4	1.8	1.3
M4	3	2.2	4.5	3.3
M5	6	4	9	7
M6	10	7	15	11
M8	25	18	35	26
M10	50	37	70	52
M12	90	66	125	92
M14	140	103	200	148
M16	225	166	310	229
M20	435	321	610	450
M24	750	553	1050	774
M30	1495	1103	2100	1550
M36	2600	1917	3675	2710



Torque figures indicated above are valid for non-greased or non-oiled threads and heads unless otherwise specified. Therefore, do not grease or oil bolts or capscrews unless otherwise specified in this manual. When using locking elements, increase torque values by 5%.

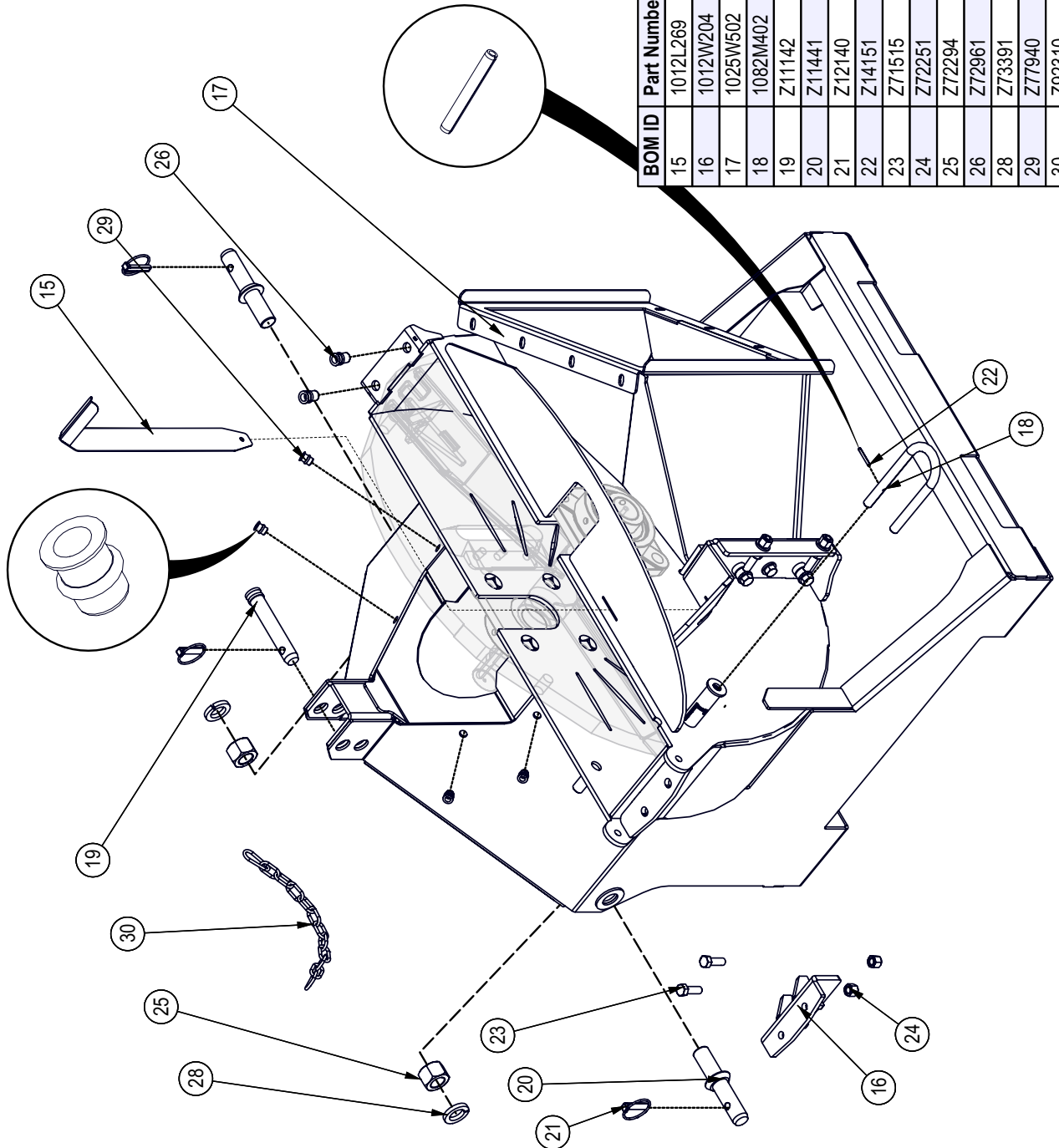
\* Torque value for bolts and capscrews are identified by their head markings.

**Rotor Assembly**



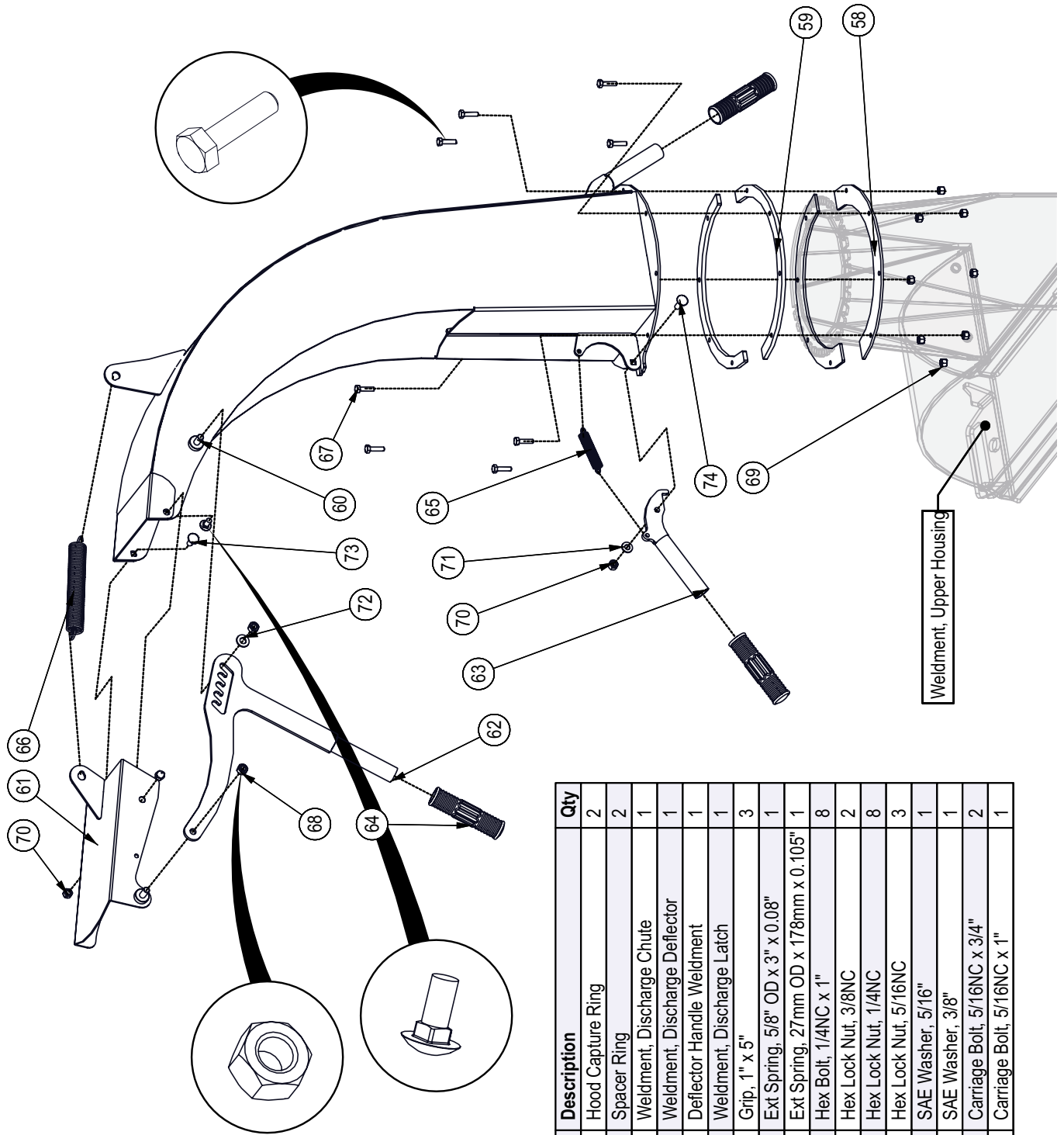
BOM ID	Part Number	Description	Qty
1	1025W501	Rotor Weldment, 10" Self Feed	1
2	Z44802	Global Series 8 PTO Shaft 2" Crossbolt	1
3	1019M903	Knife, BX92, Rotor	4
4	1021L165	Bearing Plate, BX102R x 5/16"	2
5	1021S102	Rotation Indicator Cover	1
6	Z94208	Clockwise Rotation Label	1
7	Z25209	UCF311 Flange Bearing	2
8	Z29201	Grease Fitting, 1/8NPT	2
9	Z46563	Key, 1/2 x 1/2 x 3	1
10	Z71575G8	Hex Bolt, 1/2NF x 1-1/4" G8	12
11	Z72281G8	Hex Lock Nut, 7/8NC G8	8
12	Z74141	Set Screw, 7/16NF x 3/8"	4
13	Z75351	BHCS, 5/16NF x 3/4"	1
14	Z76283G8	Dome Plow Bolt, 7/8NC x 2-3/4" G8	8

**Lower Rotor Housing**



BOM ID	Part Number	Description	Qty
15	1012L269	Gauge, Ledger Setting	1
16	1012W204	Twig Breaker	1
17	1025W502	Lower Housing Weldment	1
18	1082M402	Locking Plunger	1
19	Z11142	Toplink Pin, 1" x 4-5/16"	1
20	Z11441	Implement Pin, 1-1/8" x 1-3/4" x 1-1/8NF	2
21	Z12140	Lynch Pin, 7/16"	3
22	Z14151	Roll Pin, 3/16" x 1-1/2"	1
23	Z171515	Hex Bolt, 1/2NC x 1-1/2"	2
24	Z172251	Hex Lock Nut, 1/2NC	2
25	Z172294	Hex Lock Nut, 1-1/8NF	2
26	Z172961	Rivet Nut, 1/2NC x 350	2
28	Z173391	Split Lock Washer, 1-1/8"	2
29	Z177940	Rivet Nut, M10x1.5 x 313	4
30	Z92310	PTO Support Chain, 3/16" x 1ft with Two Snaps	1

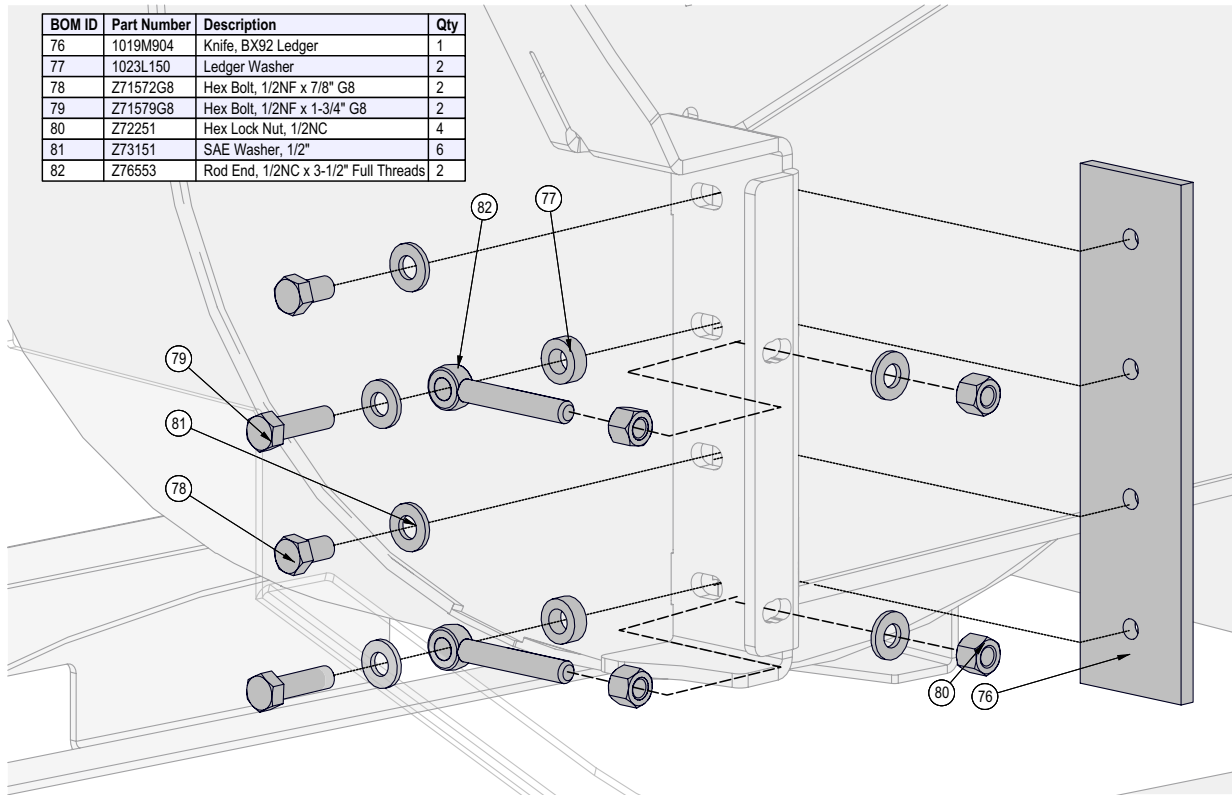
**Feed Chute**



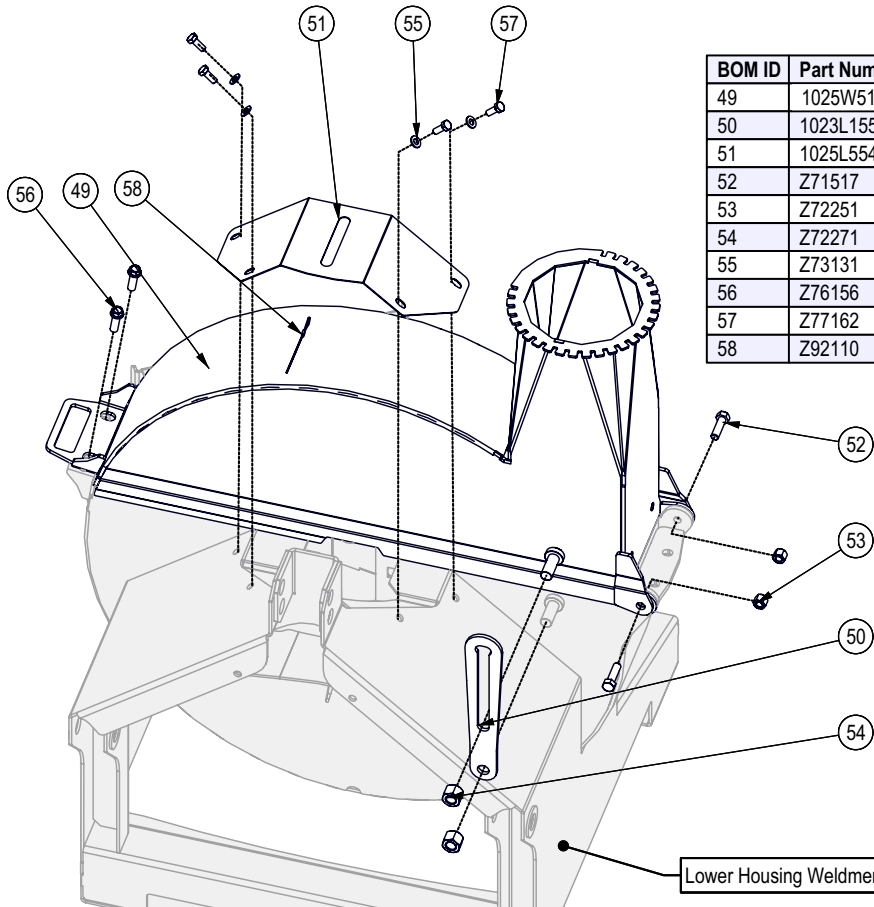
BOM ID	Part Number	Description	Qty
58	1023L291	Hood Capture Ring	2
59	1023L292	Spacer Ring	2
60	1023W223	Weldment, Discharge Chute	1
61	1023W224	Weldment, Discharge Deflector	1
62	1023W226	Deflector Handle Weldment	1
63	1024W108	Weldment, Discharge Latch	1
64	Z19321	Grip, 1" x 5"	3
65	Z31305	Ext Spring, 5/8" OD x 3" x 0.08"	1
66	Z31403	Ext Spring, 27mm OD x 178mm x 0.105"	1
67	Z71110	Hex Bolt, 1/4NC x 1"	8
68	Z72231	Hex Lock Nut, 3/8NC	2
69	Z72211	Hex Lock Nut, 1/4NC	8
70	Z72221	Hex Lock Nut, 5/16NC	3
71	Z73122	SAE Washer, 5/16"	1
72	Z73131	SAE Washer, 3/8"	1
73	Z76221	Carriage Bolt, 5/16NC x 3/4"	2
74	Z76225	Carriage Bolt, 5/16NC x 1"	1

**Ledger Knife Detail**

BOM ID	Part Number	Description	Qty
76	1019M904	Knife, BX92 Ledger	1
77	1023L150	Ledger Washer	2
78	Z71572G8	Hex Bolt, 1/2NF x 7/8" G8	2
79	Z71579G8	Hex Bolt, 1/2NF x 1-3/4" G8	2
80	Z72251	Hex Lock Nut, 1/2NC	4
81	Z73151	SAE Washer, 1/2"	6
82	Z76553	Rod End, 1/2NC x 3-1/2" Full Threads	2



**Upper Rotor Housing**

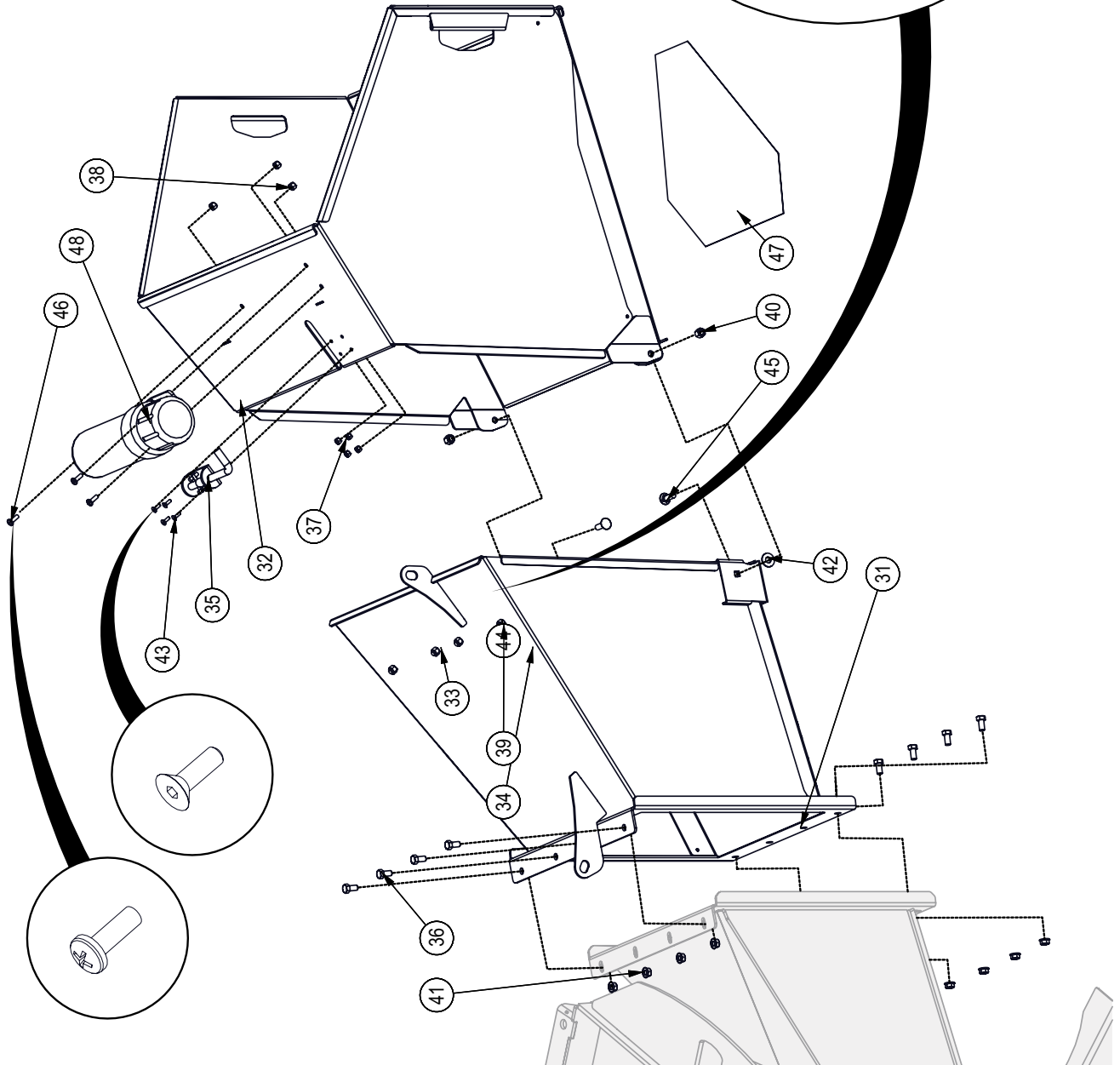


BOM ID	Part Number	Description	Qty
49	1025W512	Weldment, Upper Housing	1
50	1023L155	Rotation Stop	1
51	1025L554	PTO Guard	1
52	Z71517	Hex Bolt, 1/2NC x 1-3/4"	2
53	Z72251	Hex Lock Nut, 1/2NC	2
54	Z72271	Hex Lock Nut, 3/4NC	2
55	Z73131	SAE Washer, 3/8"	4
56	Z76156	Flange Bolt, 1/2NC x 1-1/2"	2
57	Z77162	Hex Bolt, M10x1.5 x 25mm	4
58	Z92110	Aircraft Cable, 1/16" x 24"	1



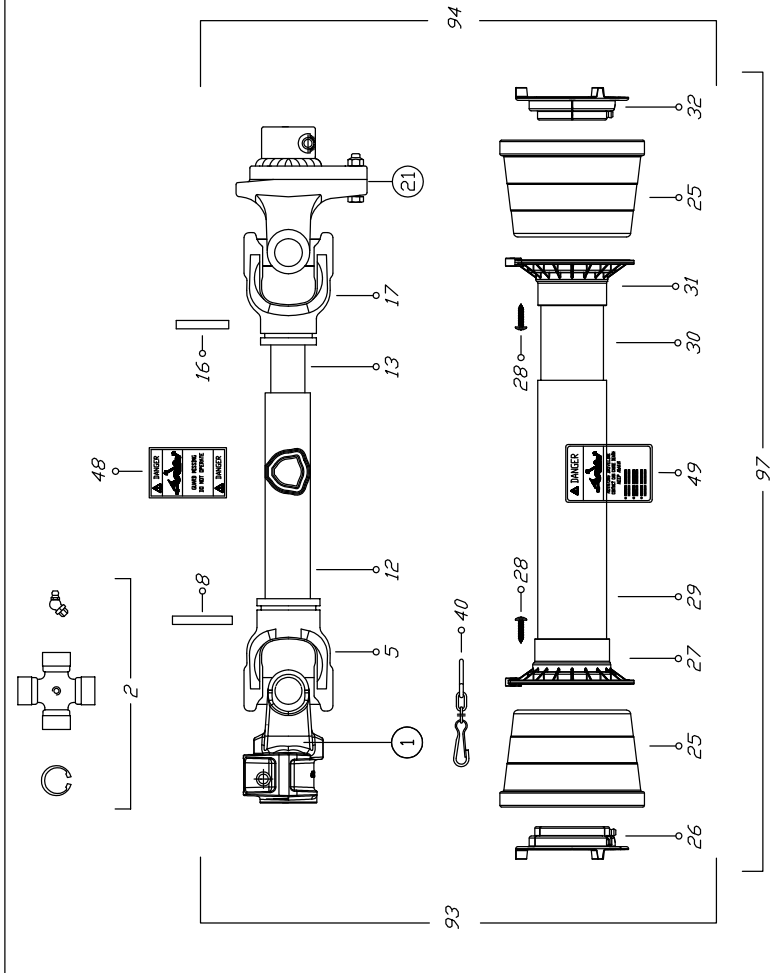
**Discharge Chute**

BOM ID	Part Number	Description	Qty
31	1025W510	Weldment, Mid Hopper	1
32	1025W511	Weldment, Folding Hopper	1
33	1025L556	Flap Trap Plate, BX72S	1
34	1025S508	Hopper Flap, BX102S	2
35	Z18207	Spring Latch Pin	1
36	Z11307	Hex Bolt, 3/8NC x 3/4"	8
37	Z12204	Hex Lock Nut, #10NF	4
38	Z12211	Hex Lock Nut, 1/4NC	3
39	Z12221	Hex Lock Nut, 5/16NC	4
40	Z12231	Hex Lock Nut, 3/8NC	2
41	Z12531	Serrated Flange Locknut, 3/8NC	8
42	Z13233	PTFE Washer, 3/8" x 1/16"	2
43	Z18316	Machine Screw, #10NF x 3/4"	4
44	Z16221	Carriage Bolt, 5/16NC x 3/4"	4
45	Z16232	Carriage Bolt, 3/8NC x 1-1/4"	2
46	Z18301	Machine Screw, 1/4NC x 3/4"	3
47	Z94601	Decal, SMV	1
48	Z96503	Manual Tube, 3-1/2" Short	1

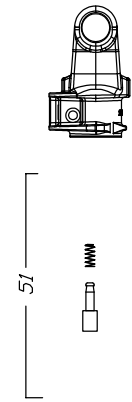


**PTO Shaft #Z44802**

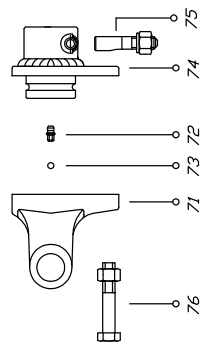
SPARE PARTS LIST : B8D061US098001		
POS.	DESCRIPTION	Q. RIF. BINACCHI
01	YOKE	1 0800803A60
02	CROSS JOURNAL ASS.	2 08208
05	OUTER TUBE YOKE	1 08080021
08	FLEXIBLE PIN	1 098701075
12	CM. 100 CARDAN TUBE(*)	1 09881544100
13	CM. 100 CARDAN TUBE(*)	1 09881455100
16	FLEXIBLE PIN	1 098701065
17	INNER TUBE YOKE	1 08080011
21	SHEAR BOLT M12X65	1 Z19408 (5 pack)
25	CONE SHIELD BELL 07-08	2 021908C001
26	OUTER BEARING	1 025508C001
27	OUTER BASE CONE 07-08	1 025408C001
28	SCREW	8 0998052242
29	OUTER SAFETY TUBE	1 0988981NB8066
30	INNER SAFETY TUBE	1 0988975NB8066
31	INNER BASE CONE 07-08	1 025408C002
32	INNER BEARING	1 025508C002
40	CHAIN	1 0252000001
48	LABEL DANGER OUTER DRIVE TUBE	1 09872006
49	EXTERNAL SHIELD LABEL	1 09872003
51	COMPLETE PUSH BUTTTON	1 0986014060
71	YOKE FOR LB8	1 088608553
72	GREASE NIPPLE	1 0984010150
73	STEEL BALL	24 098680516
74	HUB	1 08868P70
75	CONIC SCREW	1 0408000061
76	NUT AND BOLT M12 x 65	1 Z19408
93	OUTER HALF SHAFT	1 B8061US2
94	INNER HALF SHAFT	1 B8061US1098001
97	SAFETY GUARD	1 083US08061



①



②



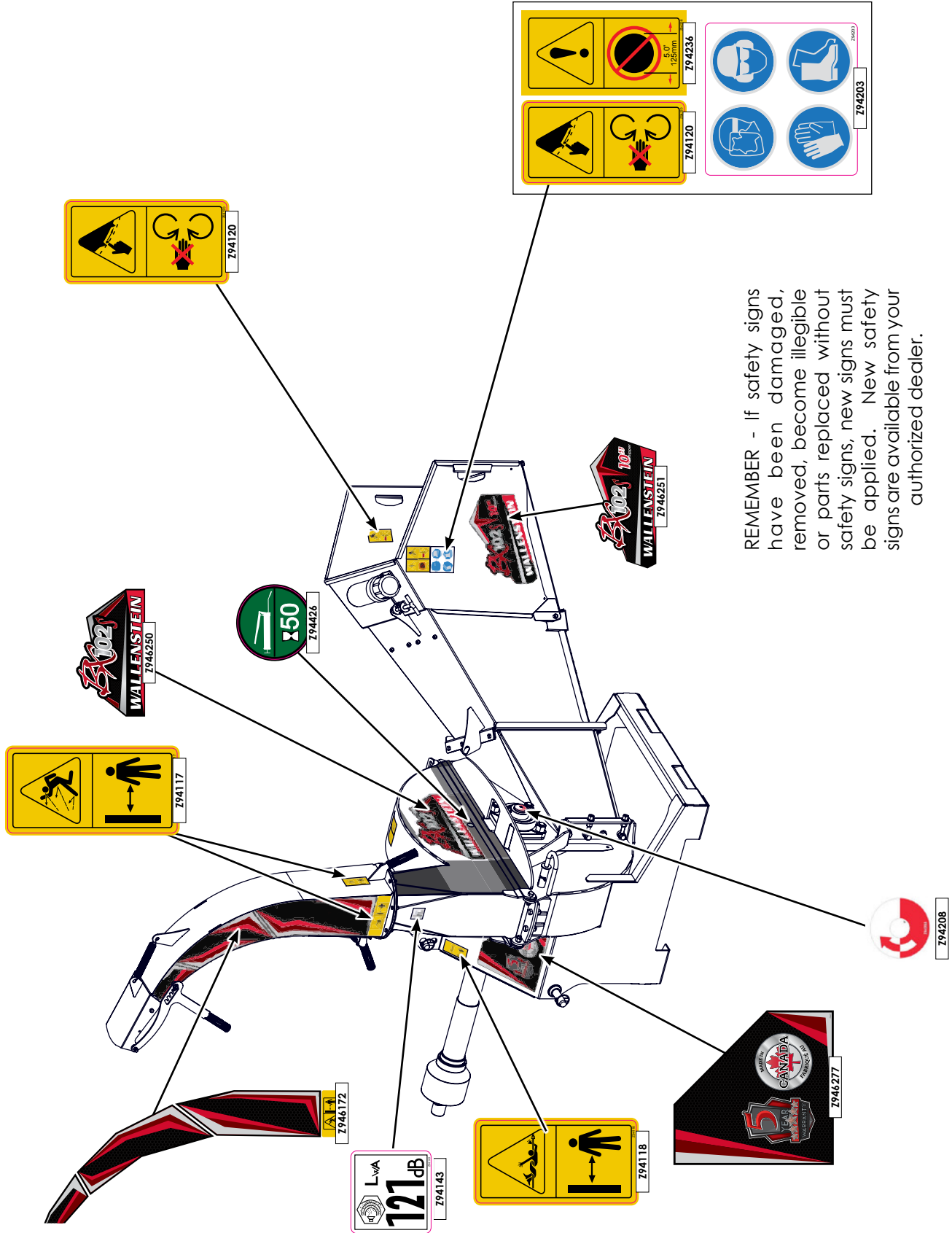
VIETATE LE RIPRODUZIONI NON AUTORIZZATE  
 NOT PERMITTED AL RIGHTS RESERVED

TOUTE REPRODUCTION NON AUTORISEE EST INTERDITE  
 NICHT GENEEMIGTE VERVEELFACHTINGEN SIND UNZULASSIG

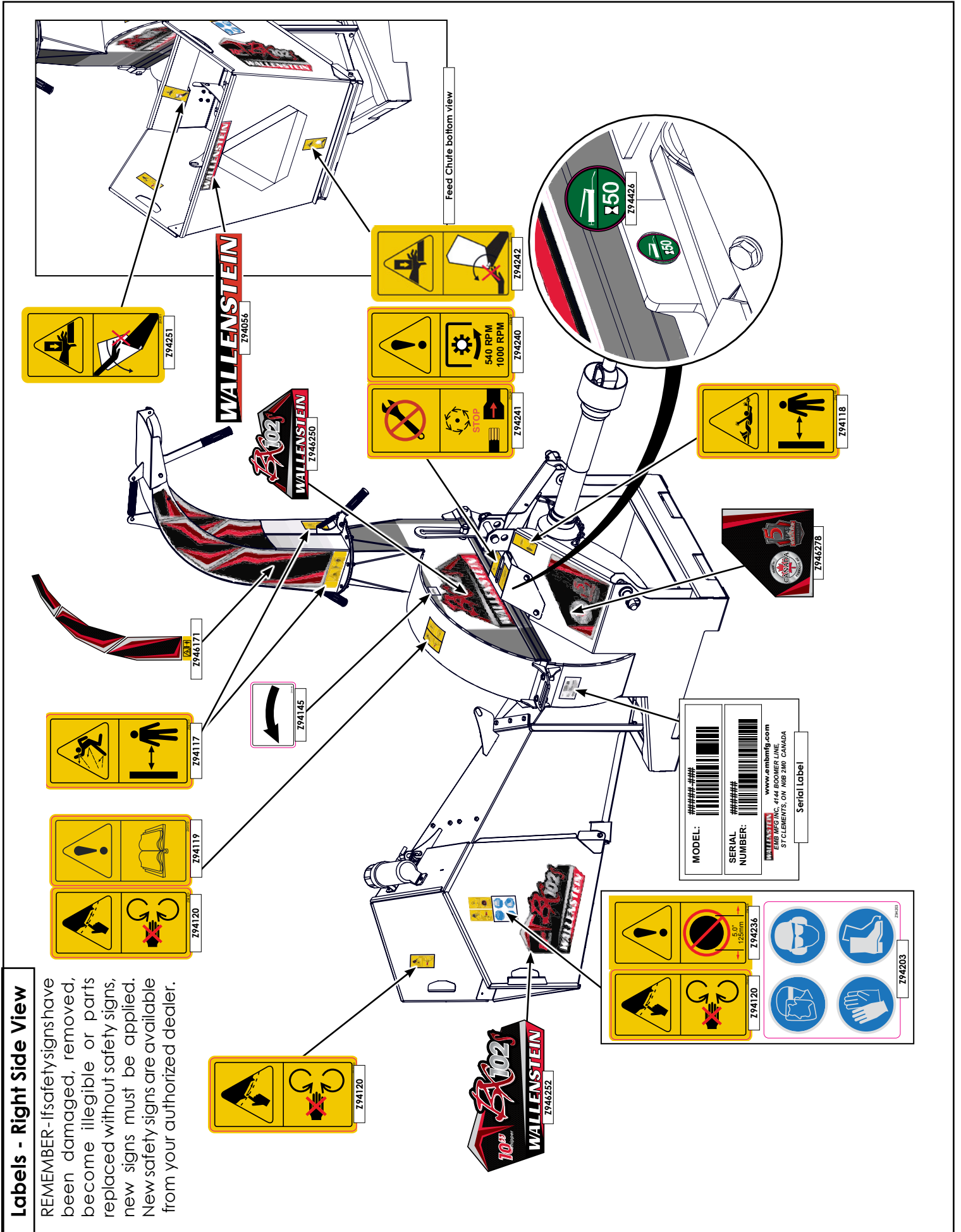
CODICE C.E.D.  
 B8D061US098001

DATA  
 29/01/10

Labels - Left Side View



REMEMBER - If safety signs have been damaged, removed, become illegible or parts replaced without safety signs, new signs must be applied. New safety signs are available from your authorized dealer.

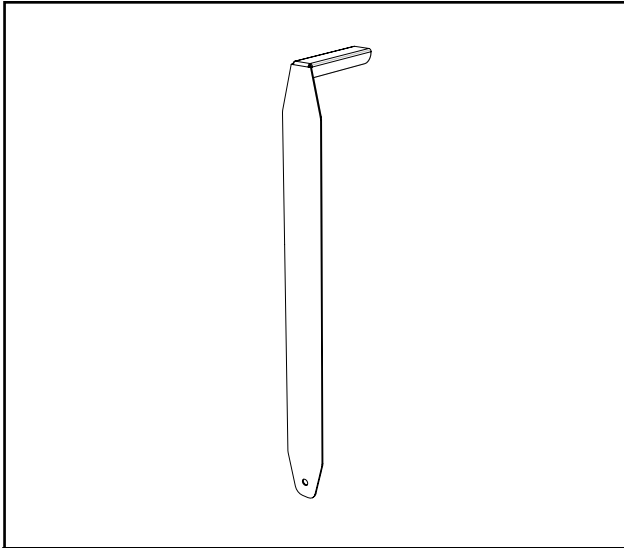


**Labels - Right Side View**

REMEMBER - If safety signs have been damaged, removed, become illegible or parts replaced without safety signs, new signs must be applied. New safety signs are available from your authorized dealer.

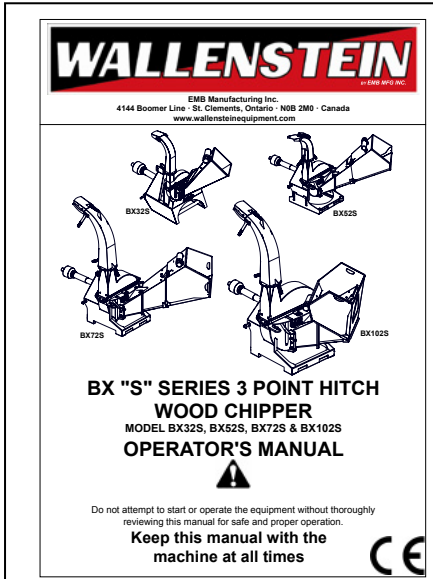
**Accessories**

Call your dealer for pricing and availability



**#1012L269 LEDGER CLEARANCE SETTING GAUGE**

An easy and accurate way of setting the critical clearances between the ledger blade and the rotor chipper blade.



**#Z97085  
BX "S" SERIES 3 POINT HITCH  
WOOD CHIPPER  
OPERATOR'S MANUAL**

Available as a download at  
[www.wallensteinequipment.com](http://www.wallensteinequipment.com)