

EMB Manufacturing Inc.

4144 Boomer Line · St. Clements, On · N0B 2M0 · Canada
Ph: (519) 699-9283 · Fax: (519) 699-4146 www.embmfg.com

Accessory Installation Instructions 3 POINT HITCH ADAPTOR KIT

For Installation of Wallenstein Backhoe Products on Category I Tractors
This Instruction applies to 3PH Kit: **#PT300**



This Safety Alert symbol means
ATTENTION! BECOME ALERT! YOUR SAFETY IS INVOLVED!

The Safety Alert symbol identifies important safety messages in this instruction. When you see this symbol, be alert to the possibility of personal injury or death. Follow the instructions in the safety message.



Always wear the appropriate safety gear when installing this kit or working around the machine. This includes but is not limited to:

- Hard hat for protection to the head.
- Safety glasses protection for the eyes.
- Heavy gloves for hand protection.
- Safety shoes with slip resistant soles and steel toes.

PT300 3 Point Hitch Adaptor Kit Installation:

Kit #PT300: adapts GX620, & GX720 Wallenstein Backhoe products for 3 point installation



Caution: this kit is constructed of heavy gauge steel, be sure to use caution moving and installing the kit, avoid dropping or pinching body parts on corners and edges of the kit.

The #PT300 kit comes unassembled. Final assembly depends on the 3 point hitch configuration of your tractor. Illustrations show typical assembly. This assembly procedure is one time only. Normal 3 point hook up procedure can be used once your 3 point hitch is set up.

Before you start, you'll need:

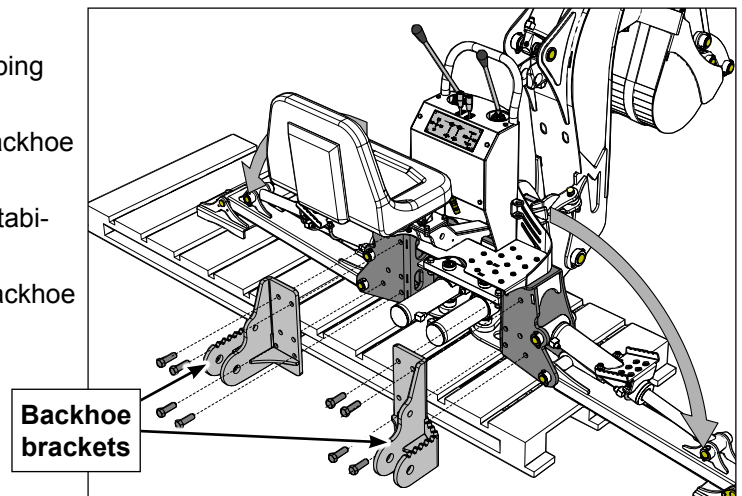
- Tools required, 15/16" & 1 1/8" wrench and sockets.

Installation Instructions:



Ensure the tractor and the area around it is clean and free of debris, resting on dry level ground, brake applied and the engine shut off. Have the PT300 3PH kit on the ground in front of the 3 point hitch.

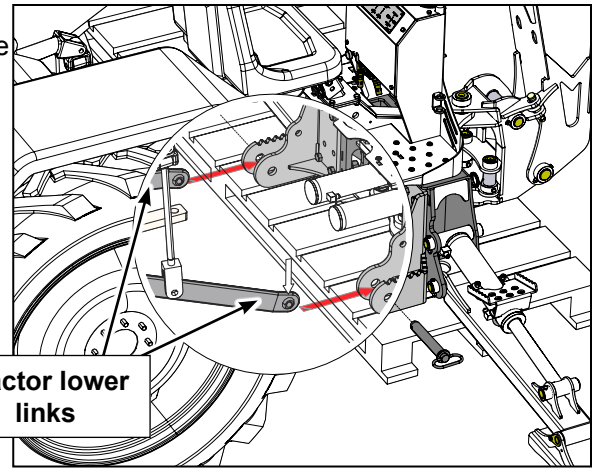
1. With the backhoe fully assembled and still on the shipping skid,
 - unclip the safety catches (some models) on the backhoe stabilizer arms.
 - push the stabilizer control forward to release the stabilizer arms, and manually push them down.
 - assemble left and right backhoe brackets to the backhoe (4 bolts each side).



2. Start the tractor and carefully back up to the backhoe and attach the tractor lower links to the left and right backhoe brackets. Connect the backhoe hydraulics to the tractor.



Use caution when backing up the tractor, be aware of bystanders, be sure to apply the brake and the engine is shut off before proceeding with the next step.

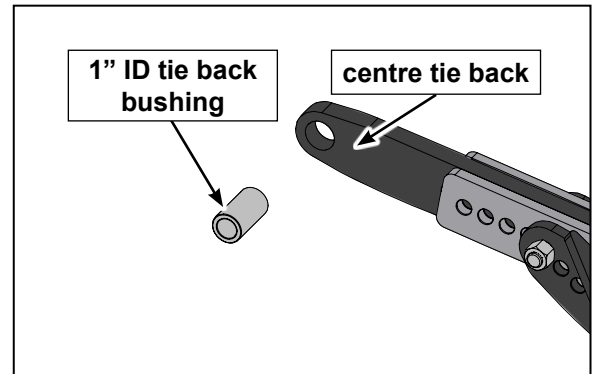


Tractor lower links

3. Find the centre tie back bushing (1" id) and check that it fits on the tractor's top link, if the bushing is too wide then it will have to be cut to fit.

1" ID tie back bushing

centre tie back

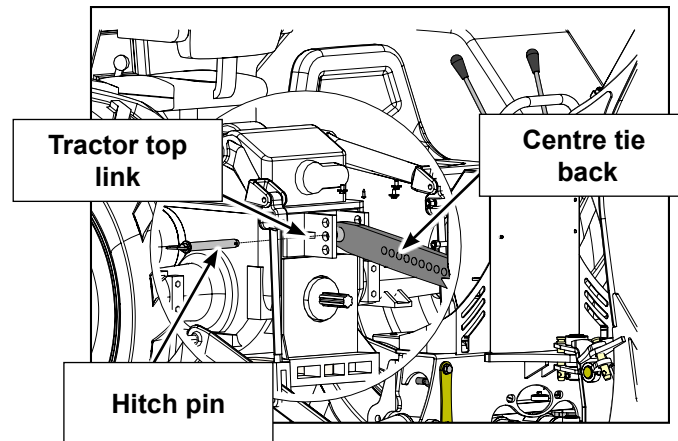


4. Attach the centre tie back and bushing to the tractor top link using a hitch pin.

Tractor top link

Centre tie back

Hitch pin

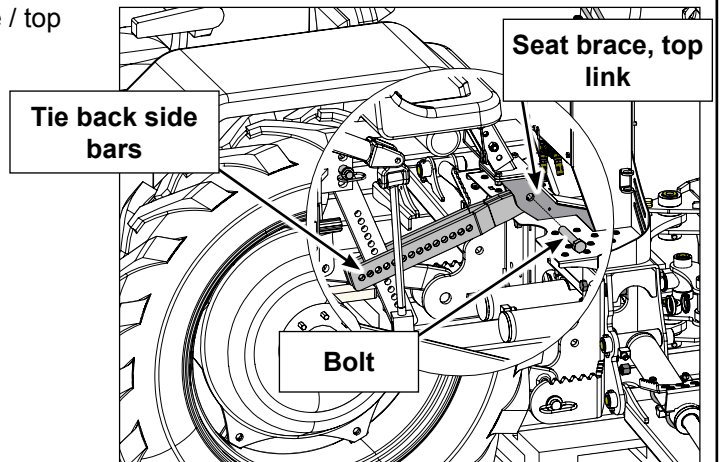


5. Assemble the two tie back bar sides to backhoe seat brace / top link with a bolt. (not included)

Seat brace, top link

Tie back side bars

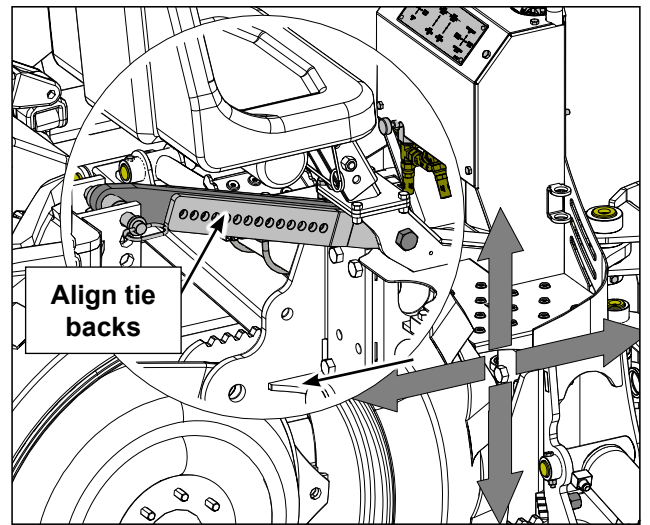
Bolt



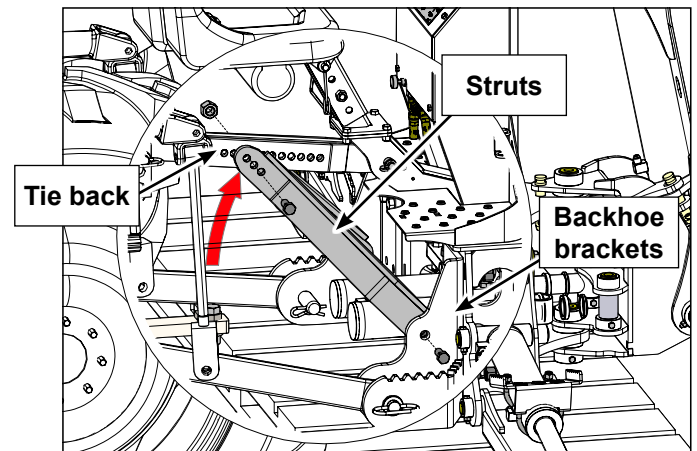
6. Start the tractor, raise the lower link arms so the backhoe bottom is approximately 13" (330mm) from the ground. Use the backhoe boom and stabilizers to align the centre and side tie back bars. Ensure the backhoe is straight and level.



Always use caution when working around running machinery, ensure the brake is applied and the engine is shut off before proceeding with the next step.

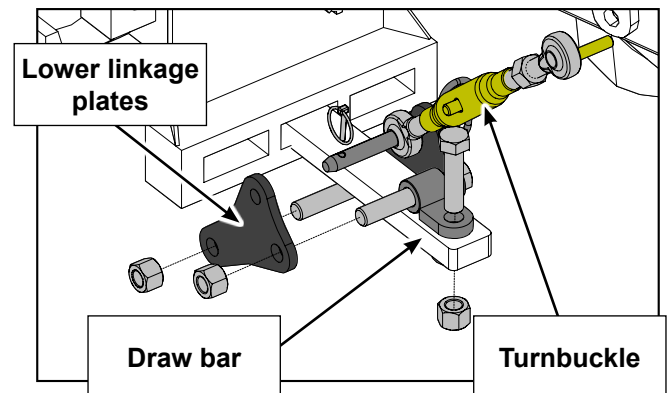


7. Once the backhoe is straight and level and the tie back bars are aligned, loosely bolt the tie backs together using the left and right struts. Bolt the opposite end of the struts to the backhoe brackets.

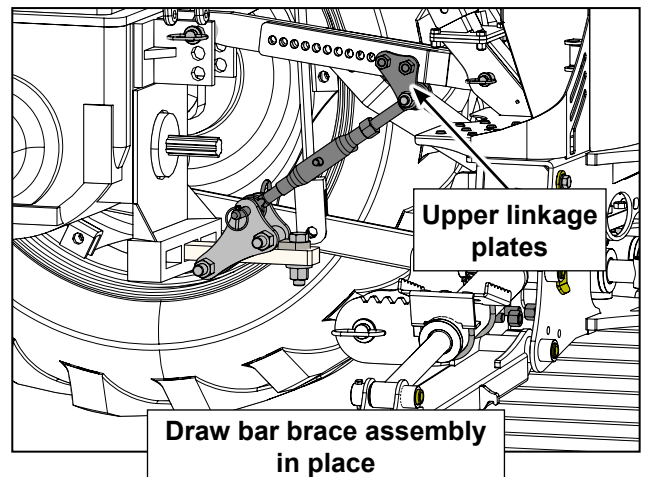


8. Assemble the lower linkage plates to the tractors draw bar, as shown in the illustration

Note: if you are installing a PTO Hydraulic Power Pack, you will not be able to install the draw bar brace assembly. Skip steps 8 to 11.

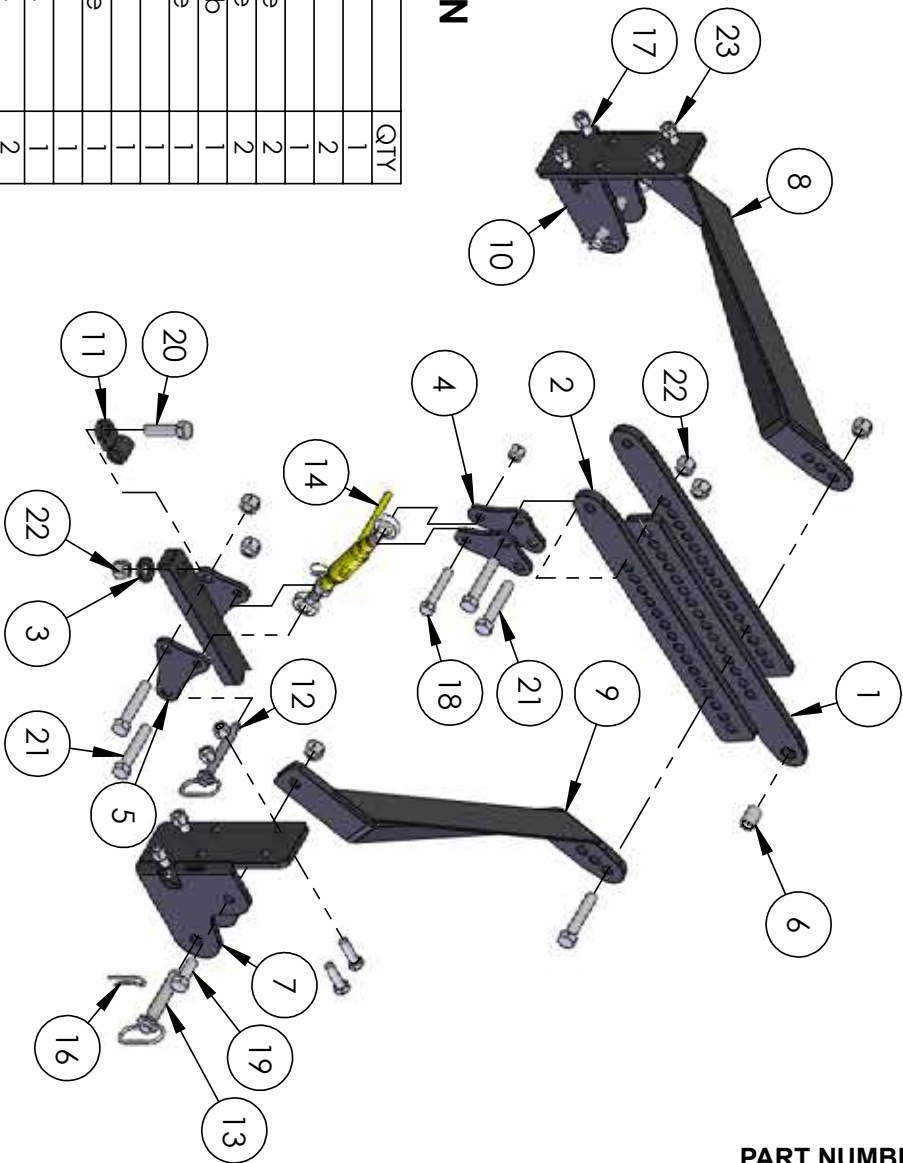


9. Assemble the upper linkage plates to the tie back assembly as shown.
10. Attach the turnbuckle to the upper linkage plates.
11. Check once more that your backhoe is straight and level, adjust if required and snug up the turnbuckle.
12. Tighten up all the bolts to finalize the assembly.
13. Check backhoe functions:
 - start the tractor,
 - lower the stabilizers
 - check all functions of the backhoe.
 - double check all fasteners and three point hitch is solidly attached and secure.



PT300 3 Point Hitch Adaptor Parts List

PT300 PARTS BREAKDOWN



| ITEM | PART NO. | DESCRIPTION | QTY |
|------|----------|-------------------------|-----|
| 1 | 3041L204 | Bar, Center Link | 1 |
| 2 | 3041L205 | Bar, Outer Link | 2 |
| 3 | 3041L211 | Washer, Draw-bar | 1 |
| 4 | 3041L213 | Plate, Upper Linkage | 2 |
| 5 | 3041L214 | Plate, Lower Linkage | 2 |
| 6 | 3041M201 | Bushing, Drawbar Tab | 1 |
| 7 | 3041W201 | Bracket, LH Backhoe | 1 |
| 8 | 3041W203 | Strut, RH Backhoe | 1 |
| 9 | 3041W204 | Strute, LH Backhoe | 1 |
| 10 | 3041W205 | Bracket, RH Backhoe | 1 |
| 11 | 3042W105 | Tab, Drawbar | 1 |
| 12 | Z11232 | Hitch Pin 5/8 x 4-1/4 | 1 |
| 13 | Z11251 | Hitch Pin 7/8 x 4-1/4 | 2 |
| 14 | Z11501 | Toplink, Cat 0 | 1 |
| 15 | Z12110 | Latch Pin 3/16 | 1 |
| 16 | Z12230 | Clip, Hitch Pin 3/16 | 2 |
| 17 | Z71620 | Hex Bolt, 5/8NC x 2 | 8 |
| 18 | Z71635 | Hex Bolt, 5/8NC x 3-1/2 | 1 |
| 19 | Z71720 | Hex Bolt, 3/4NC x 2 | 2 |
| 20 | Z71730 | Hex Bolt 3/4NC x 3 | 1 |
| 21 | Z71740 | Hex Bolt 3/4NC x 4 | 5 |
| 22 | Z72170 | Hex Lock Nut 3/4NC | 8 |
| 23 | Z72261 | Hex Lock Nut 5/8NC | 9 |