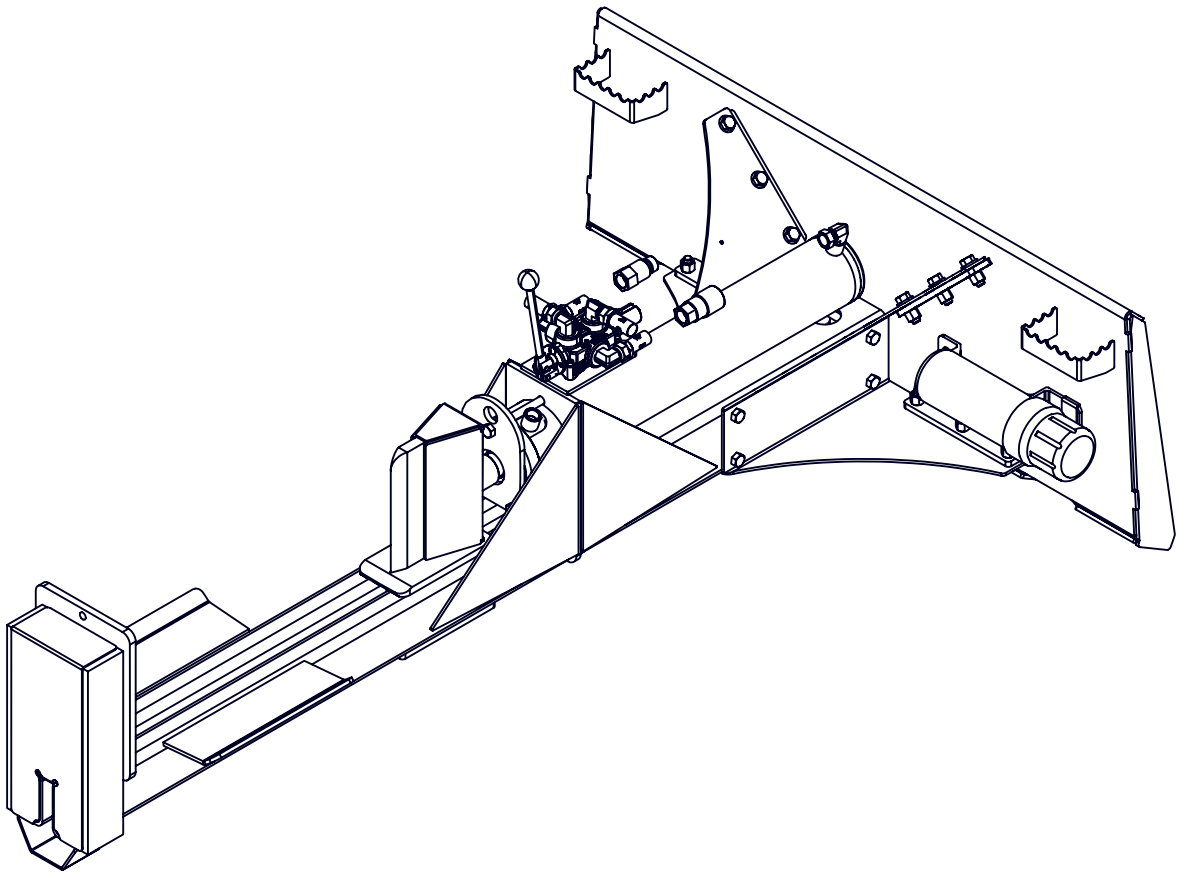




EMB Manufacturing Inc.  
4144 Boomer Line · St. Clements, On · N0B 2M0 · Canada  
Ph: (519) 699-9283 · Fax: (519) 699-4146  
[www.wallensteinequipment.com](http://www.wallensteinequipment.com)

# WX440 Skidsteer Splitter Parts Manual

S/N 170001 & After



Refer to the operators  
manual for safe  
operation and  
maintenance

## **Foreword**

EMB Mfg. has prepared this parts manual to assist customers in ordering quality OEM replacement parts.

Proper and regular service and replacing old, worn or broken parts with the correct OEM parts are essential to prolonging the life of your EMB product. Please refer to this manual before ordering any replacement parts.

All information contained in this parts manual is based on the latest product specification available at the time of printing this manual. If your product differs from the specifications contained within this manual contact EMB Mfg. for information.

EMB reserves the right to alter specifications on their products at any time.

Reproduction of this parts manual of any kind is prohibited without prior written permission from EMB Mfg.

# Table of Contents

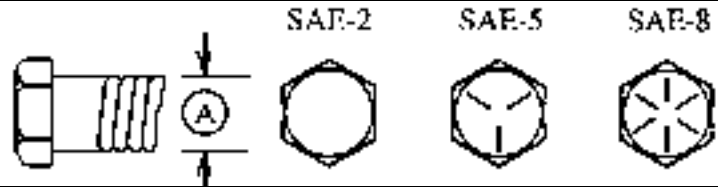
|                          |    |
|--------------------------|----|
| Bolt Torque              | 4  |
| Hydraulic Fitting Torque | 5  |
| Cylinder                 | 6  |
| Main Parts               | 7  |
| Valve Assembly           | 9  |
| Decal Breakdown          | 10 |

**Bolt Torque**

**CHECKING BOLT TORQUE**

The tables shown below give correct torque values for various bolts and capscrews. Tighten all bolts to the torques specified in chart unless otherwise noted. Check tightness of bolts periodically, using bolt torque chart as a guide. Replace hardware with the same strength bolt.

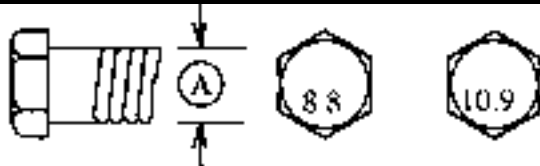
| ENGLISH TORQUE SPECIFICATIONS |                        |     |                        |     |                        |     |
|-------------------------------|------------------------|-----|------------------------|-----|------------------------|-----|
| Bolt Diameter "A"             | Bolt Torque*           |     |                        |     |                        |     |
|                               | SAE 2<br>(N.m) (lb-ft) |     | SAE 5<br>(N.m) (lb-ft) |     | SAE 8<br>(N.m) (lb-ft) |     |
| 1/4"                          | 8                      | 6   | 12                     | 9   | 17                     | 12  |
| 5/16"                         | 13                     | 10  | 25                     | 19  | 36                     | 27  |
| 3/8"                          | 27                     | 20  | 45                     | 33  | 63                     | 45  |
| 7/16"                         | 41                     | 30  | 72                     | 53  | 100                    | 75  |
| 1/2"                          | 61                     | 45  | 110                    | 80  | 155                    | 115 |
| 9/16"                         | 95                     | 60  | 155                    | 115 | 220                    | 165 |
| 5/8"                          | 128                    | 95  | 215                    | 160 | 305                    | 220 |
| 3/4"                          | 225                    | 165 | 390                    | 290 | 540                    | 400 |
| 7/8"                          | 230                    | 170 | 570                    | 420 | 880                    | 650 |
| 1"                            | 345                    | 225 | 850                    | 630 | 1320                   | 970 |



Torque figures indicated above are valid for non-greased or non-oiled threads and heads unless otherwise specified. Therefore, do not grease or oil bolts or capscrews unless otherwise specified in this manual. When using locking elements, increase torque values by 5%.

\* Torque value for bolts and capscrews are identified by their head markings.

| METRIC TORQUE SPECIFICATIONS |                      |      |                       |      |
|------------------------------|----------------------|------|-----------------------|------|
| Bolt Diameter "A"            | Bolt Torque*         |      |                       |      |
|                              | 8.8<br>(N.m) (lb-ft) |      | 10.9<br>(N.m) (lb-ft) |      |
| M3                           | 0.5                  | 0.4  | 1.8                   | 1.3  |
| M4                           | 3                    | 2.2  | 4.5                   | 3.3  |
| M5                           | 6                    | 4    | 9                     | 7    |
| M6                           | 10                   | 7    | 15                    | 11   |
| M8                           | 25                   | 18   | 35                    | 26   |
| M10                          | 50                   | 37   | 70                    | 52   |
| M12                          | 90                   | 66   | 125                   | 92   |
| M14                          | 140                  | 103  | 200                   | 148  |
| M16                          | 225                  | 166  | 310                   | 229  |
| M20                          | 435                  | 321  | 610                   | 450  |
| M24                          | 750                  | 553  | 1050                  | 774  |
| M30                          | 1495                 | 1103 | 2100                  | 1550 |
| M36                          | 2600                 | 1917 | 3675                  | 2710 |

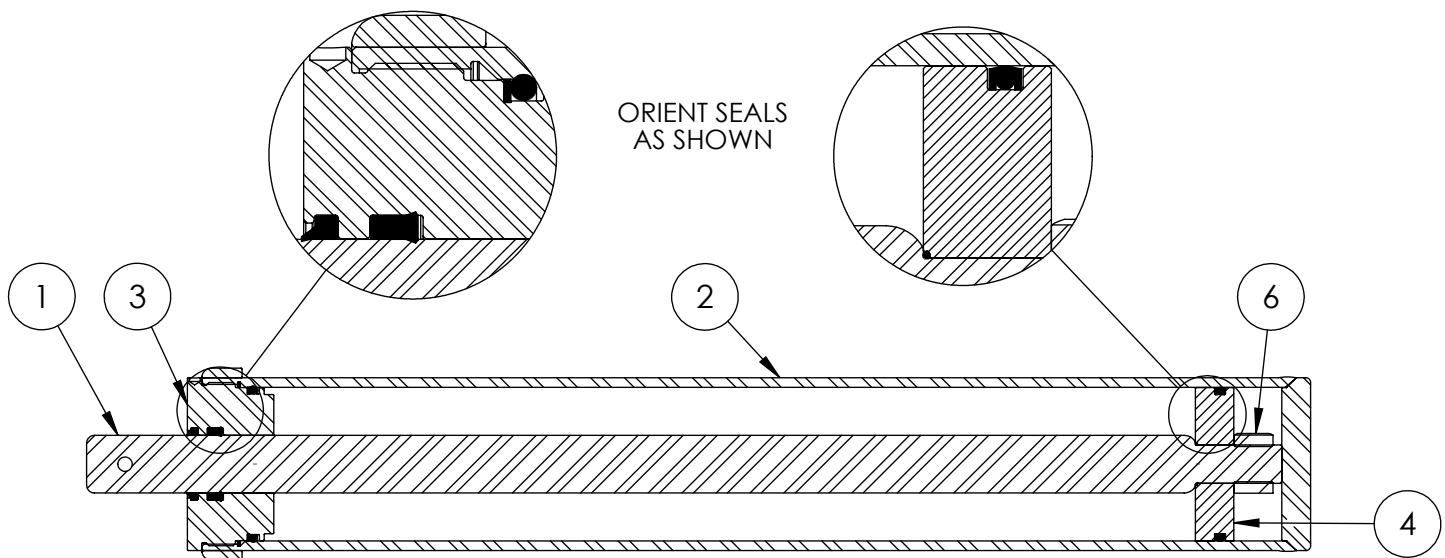


**Hydraulic Fitting Torque****Tightening Flare Type Tube Fittings \***

1. Check flare and flare seat for defects that might cause leakage.
2. Align tube with fitting before tightening.
3. Lubricate connection and hand tighten swivel nut until snug.
4. To prevent twisting the tube(s), use two wrenches. Place one wrench on the connector body and with the second tighten the swivel nut to the torque shown.

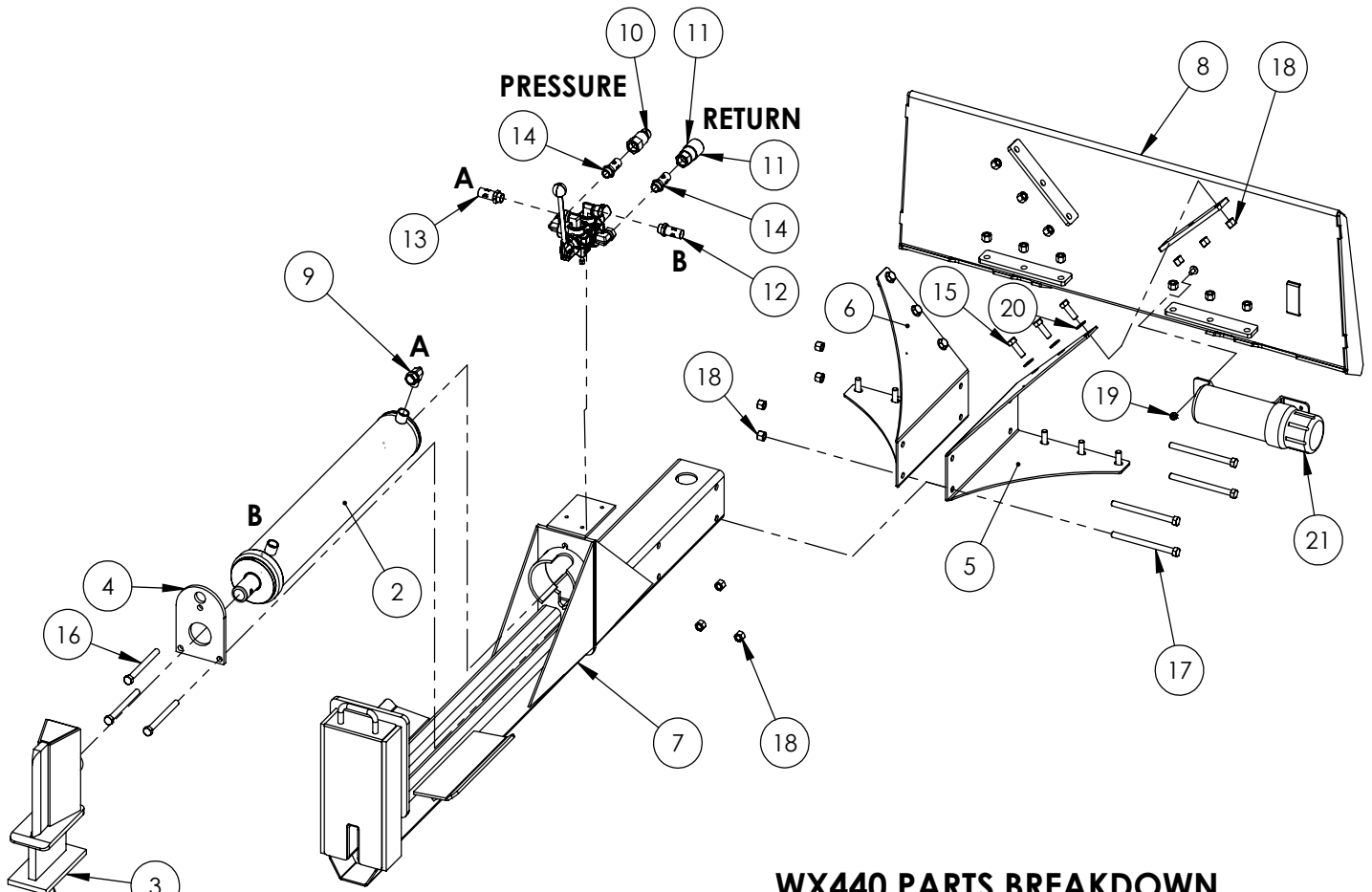
| Tube Size OD | Nut Size Across Flats | Torque Value* |           | Recommended Turns To Tighten (After Finger Tightening) |            |
|--------------|-----------------------|---------------|-----------|--|------------|
|              |                       | (N.m)         | (lb-ft)   | (Flats)  | (Turn)     |
| 3/16         | 7/16                  | 8             | 6         | 1  | 1/6        |
| 1/4          | 9/16                  | 12            | 9         | 1  | 1/6        |
| 5/16         | 5/8                   | 16            | 12        | 1  | 1/6        |
| <b>3/8</b>   | <b>11/16</b>          | <b>24</b>     | <b>18</b> | <b>1</b>   | <b>1/6</b> |
| 1/2          | 7/8                   | 46            | 34        | 1  | 1/6        |
| 5/8          | 1                     | 62            | 46        | 1  | 1/6        |
| 3/4          | 1-1/4                 | 102           | 75        | 3/4  | 1/8        |
| 7/8          | 1-3/8                 | 122           | 90        | 3/4  | 1/8        |

The torque values shown are based on lubricated connections as in reassembly.



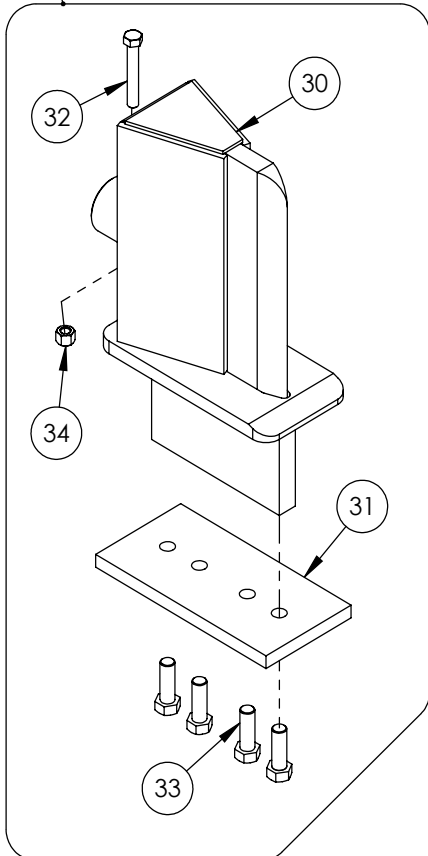
**4" x 24" STROKE CYLINDER PARTS**

| ITEM | PART NO.   | Description                | QTY. |
|------|------------|----------------------------|------|
| 1    | 2011C1012  | Rod, 1-1/2 x 1             | 1    |
| 2    | 2011C1014  | Barrel, 4"                 | 1    |
| 3    | G400-150SA | 4" Bore x 1-1/2" Rod Gland | 1    |
| 4    | P100-400SA | 4" Bore Piston             | 1    |
| 5    | SLK-4015   | Seal Kit, 4 x 1-1/2        | 1    |
| 6    | Z72292G8   | Hex Lock Nut 1NF Grade 8   | 1    |



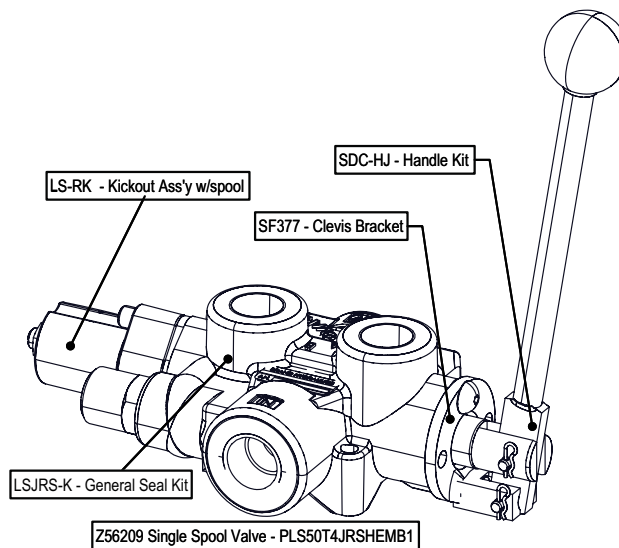
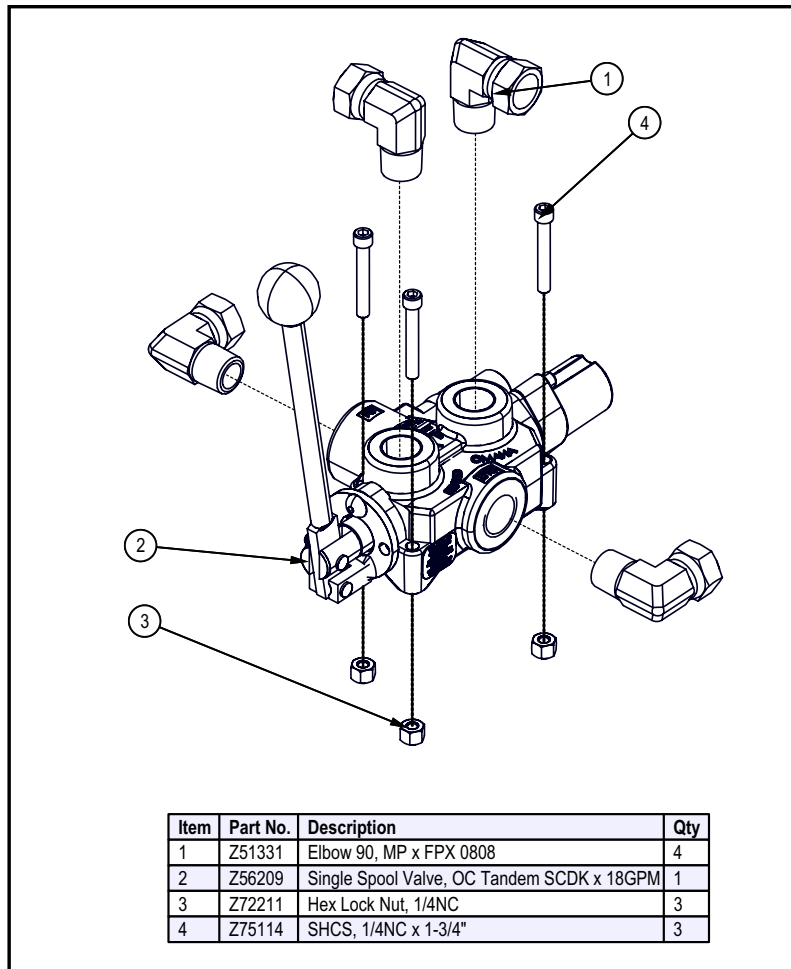
**WX440 PARTS BREAKDOWN**

| ITEM | PART NO.  | DESCRIPTION                      | QTY |
|------|-----------|----------------------------------|-----|
| 2    | 2011C101  | Cylinder, 4 x 24 x 1-1/2         | 1   |
| 3    | 2014A401  | Assembly, Wide Sliding Wedge     | 1   |
| 4    | 2014S421  | Plate, Cylinder Retaining (Bolt) | 1   |
| 5    | 2033L101  | Gusset Frame, Skidsteer Mount    | 1   |
| 6    | 2033L101H | LH Gusset Frame                  | 1   |
| 7    | 2033W302  | Weldment, WX440 Main Frame       | 1   |
| 8    | 2033W303  | Weldment, Skidsteer Mount        | 1   |
| 9    | Z51331    | Elbow 90 MP x FFX 0808           | 1   |
| 10   | Z51919    | Flat-Face,FP08 x MISO16028       | 1   |
| 11   | Z51920    | Flat Face FP08 x FISO 16028      | 1   |
| 12   | Z52301    | 1/2 Hose MP08 x MP08 x 16"       | 1   |
| 13   | Z52305    | 1/2 Hose, MP08 x MP08 x 24"      | 1   |
| 14   | Z52312    | 1/2 Hose, 1/2MPx1/2MPx 96"       | 2   |
| 15   | Z71515    | Hex Bolt 1/2NC x 1-1/2           | 12  |
| 16   | Z71555    | Hex Bolt 1/2NC x 5-1/2           | 3   |
| 17   | Z71565    | Hex Bolt, 1/2NC x 6-1/2          | 4   |
| 18   | Z72251    | Hex Lock Nut 1/2NC               | 19  |
| 19   | Z72521    | Flange Nut 5/16NC                | 1   |
| 20   | Z73151    | Flat Washer, 1/2                 | 12  |
| 21   | Z96503    | Manual Tube 3-1/2 Short          | 1   |
| ITEM | PART NO.  | DESCRIPTION                      | QTY |
| 30   | 2014W402  | Weldment, Sliding Wedge          | 1   |
| 31   | 2014S414  | Plate, Sliding Wedge Capture     | 1   |
| 32   | Z71325    | Hex Bolt 3/8NC x 2-1/2           | 1   |
| 33   | Z71576    | Hex Bolt 1/2NF x 1-1/2           | 4   |
| 34   | Z72231    | Hex Lock Nut 3/8NC               | 1   |



This Page is Intentionally Blank

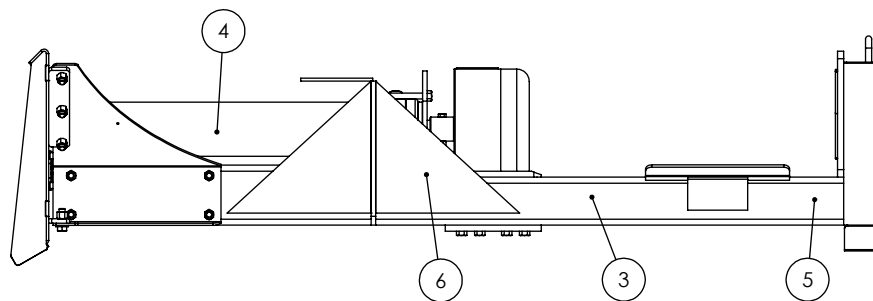
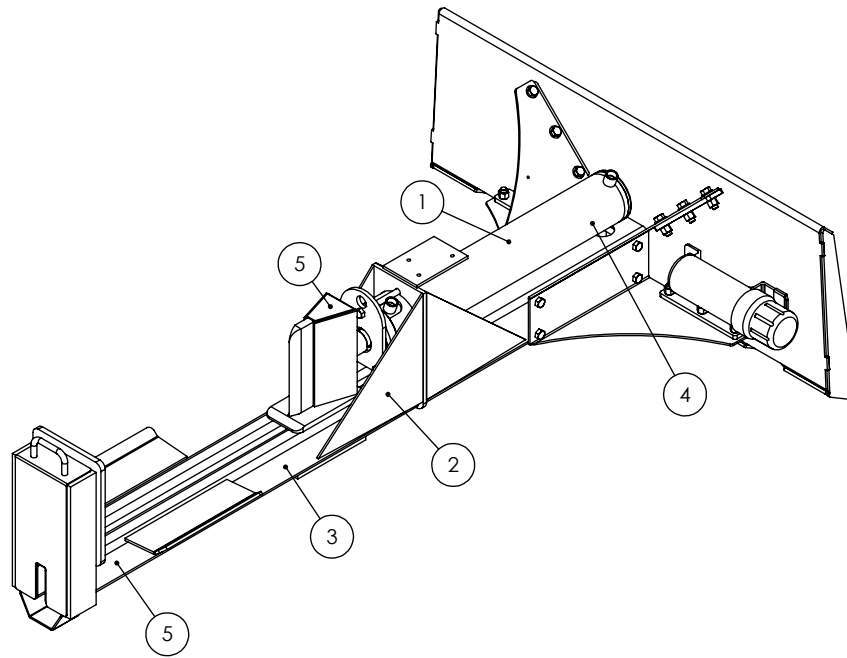




## Z56209 Valve Kits

### TWO PANEL WX440 DECAL BREAKDOWN

| ITEM | PART NO. | DESCRIPTION           | QTY |
|------|----------|-----------------------|-----|
| 1    | Z94119   | CAUTION - Read Manual | 1   |
| 2    | Z94123   | Keep Feet Clear       | 1   |
| 3    | Z94067   | Clear Guide           | 2   |
| 4    | Z94056   | Wallenstein           | 2   |
| 5    | Z94019   | Made in Canada        | 3   |
| 6    | Z94124   | Keep Hands Clear      | 1   |



# Two Panel Skidsteer Splitter Decals

Z94019



Z94067



Z94056



Z94119



Z94123



Z94124



