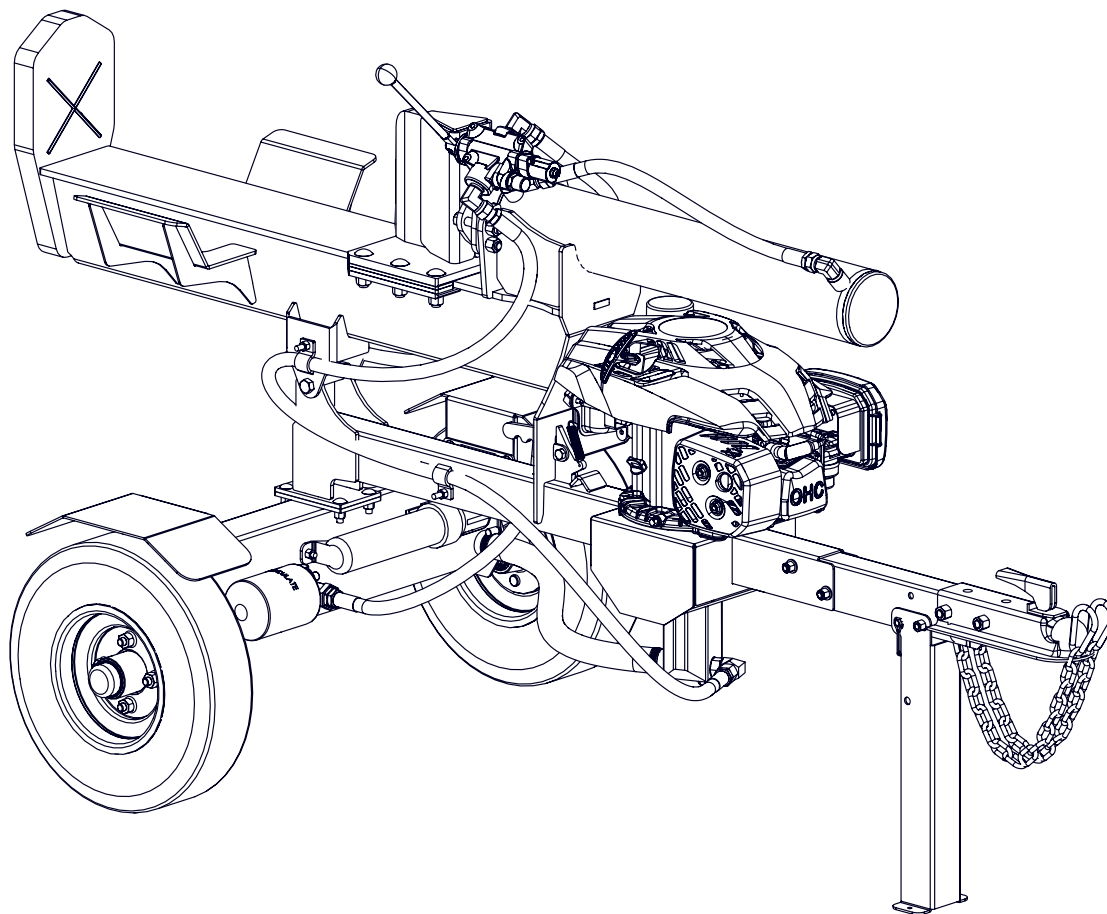




EMB Manufacturing Inc.
4144 Boomer Line · St. Clements, On · N0B 2M0 · Canada
Ph: (519) 699-9283 · Fax: (519) 699-4146
www.wallensteinequipment.com

WE230 Trailer Log Splitter Parts Manual

S/N's 150381 and on



Refer to the operators manual for safe operation and maintenance

Foreword

EMB Mfg. has prepared this parts manual to assist customers in ordering quality OEM replacement parts.

Proper and regular service and replacing old, worn or broken parts with the correct OEM parts are essential to prolonging the life of your EMB product. Please refer to this manual before ordering any replacement parts.

All information contained in this parts manual is based on the latest product specification available at the time of printing this manual. If your product differs from the specifications contained within this manual contact EMB Mfg. for information.

EMB reserves the right to alter specifications on their products at any time.

Reproduction of this parts manual of any kind is prohibited without prior written permission from EMB Mfg.

For parts and information please contact your dealer. If your dealer is no longer available please go to our website: <http://www.wallensteinequipment.com> and click on "FIND A DEALER NEAR YOU" for information on a local dealer.

Table of Contents Page

Bolt Torque.....	4
Hydraulic Fitting Torque	5
Wheel Lug Torque	5
Main Frame Assembly	6
Cylinder Assembly	7
Hitch and Tongue Assembly	8
Tank Assembly	9
Engine & Pump Assembly	10
Hub Assembly	11
Cylinder Assembly	11
Valve Assembly	12
Z56209 Service Kits	12
Hydraulic Schematic.....	13
Hydraulic Hose List	13
Label Layout.....	14
Accessories.....	15

Maintenance should be performed by
trained personnel only.



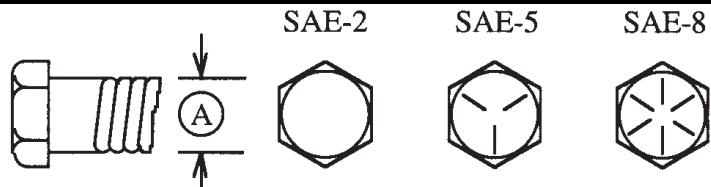
Refer to the operators
manual for safe
operation and
maintenance

Bolt Torque

CHECKING BOLT TORQUE

The tables shown below give correct torque values for various bolts and capscrews. Tighten all bolts to the torques specified in chart unless otherwise noted. Check tightness of bolts periodically, using bolt torque chart as a guide. Replace hardware with the same strength bolt.

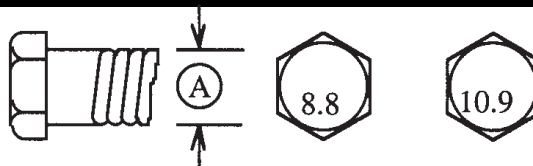
ENGLISH TORQUE SPECIFICATIONS						
Bolt Diameter "A"	Bolt Torque*					
	SAE 2 (N.m) (lb-ft)		SAE 5 (N.m) (lb-ft)		SAE 8 (N.m) (lb-ft)	
1/4"	8	6	12	9	17	12
5/16"	13	10	25	19	36	27
3/8"	27	20	45	33	63	45
7/16"	41	30	72	53	100	75
1/2"	61	45	110	80	155	115
9/16"	95	60	155	115	220	165
5/8"	128	95	215	160	305	220
3/4"	225	165	390	290	540	400
7/8"	230	170	570	420	880	650
1"	345	225	850	630	1320	970



Torque figures indicated above are valid for non-greased or non-oiled threads and heads unless otherwise specified. Therefore, do not grease or oil bolts or capscrews unless otherwise specified in this manual. When using locking elements, increase torque values by 5%.

* Torque value for bolts and capscrews are identified by their head markings.

METRIC TORQUE SPECIFICATIONS				
Bolt Diameter "A"	Bolt Torque*			
	8.8 (N.m) (lb-ft)		10.9 (N.m) (lb-ft)	
M3	0.5	0.4	1.8	1.3
M4	3	2.2	4.5	3.3
M5	6	4	9	7
M6	10	7	15	11
M8	25	18	35	26
M10	50	37	70	52
M12	90	66	125	92
M14	140	103	200	148
M16	225	166	310	229
M20	435	321	610	450
M24	750	553	1050	774
M30	1495	1103	2100	1550
M36	2600	1917	3675	2710



Hydraulic Fitting Torque

Tightening Flare Type Tube Fittings *

1. Check flare and flare seat for defects that might cause leakage.
2. Align tube with fitting before tightening.
3. Lubricate connection and hand tighten swivel nut until snug.
4. To prevent twisting the tube(s), use two wrenches. Place one wrench on the connector body and with the second tighten the swivel nut to the torque shown.

Tube Size OD (in.)	Nut Size Across Flats (in.)	Torque Value*		Recommended Turns To Tighten (After Finger Tightening)	
		(N.m)	(lb-ft)	(Flats)	(Turn)
3/16	7/16	8	6	1	1/6
1/4	9/16	12	9	1	1/6
5/16	5/8	16	12	1	1/6
3/8	11/16	24	18	1	1/6
1/2	7/8	46	34	1	1/6
5/8	1	62	46	1	1/6
3/4	1-1/4	102	75	3/4	1/8
7/8	1-3/8	122	90	3/4	1/8

The torque values shown are based on lubricated connections as in reassembly.

Wheel Lug Torque

It is extremely important safety procedure to apply and maintain proper wheel mounting torque on your trailer axle. Torque wrenches are the best method to assure the proper amount of torque is being applied to a fastener.

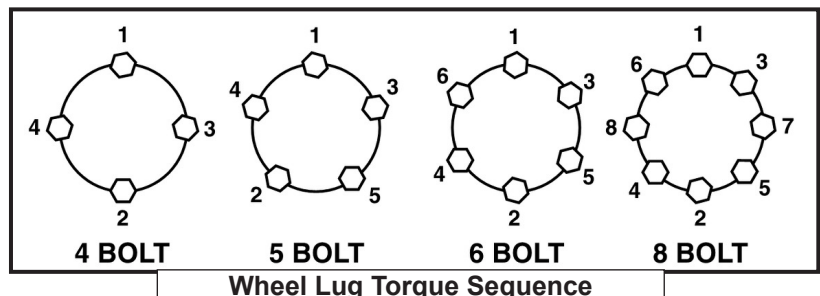
Wheel lugs should be torqued before first road use and after each wheel removal. Check and re torque after the first 16Km (10 miles), 40Km (25 miles), and again at 80Km (50 miles). Check periodically thereafter.

Note: Wheel lugs must be applied and maintained at the proper torque levels to prevent loose wheels, broken studs, and possible dangerous separation of wheels from your axle.

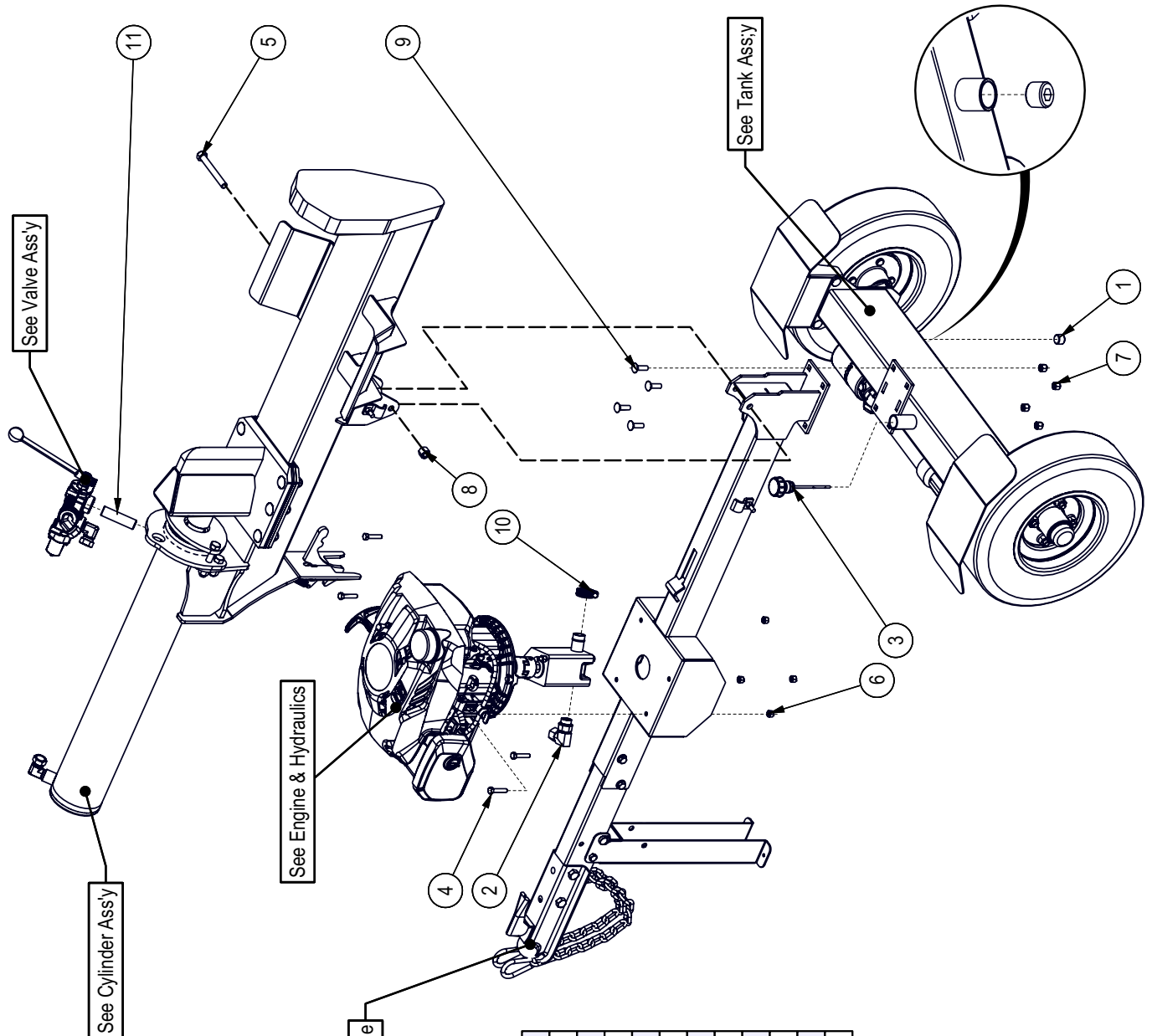
- Start all lugs by hand to prevent cross threading.
- Tighten lugs in sequence, per wheel lug torque sequence chart.
- The tightening of the fasteners should be done in stages. Following the recommended sequence, tighten fasteners per wheel torque requirements chart.

Wheel Torque Requirements

Wheel Size	Torque Unit	1st Stage	2nd Stage	3rd Stage
8"	ft-lbs	12 - 20	30 - 35	45 - 55
	Nm	16 - 26	39 - 45.5	58.5 - 71.5
12"	ft-lbs	20 - 25	35 - 40	50 - 60
	Nm	26 - 32.5	45.5 - 52	65 - 78
13"	ft-lbs	20 - 25	35 - 40	50 - 60
	Nm	26 - 32.5	45.5 - 52	65 - 78
14"	ft-lbs	20 - 25	50 - 60	90 - 120
	Nm	26 - 32.5	65 - 78	117 - 156
15"	ft-lbs	20 - 25	50 - 60	90 - 120
	Nm	26 - 32.5	65 - 78	117 - 156
16"	ft-lbs	20 - 25	50 - 60	90 - 120
	Nm	26 - 32.5	65 - 78	117 - 156



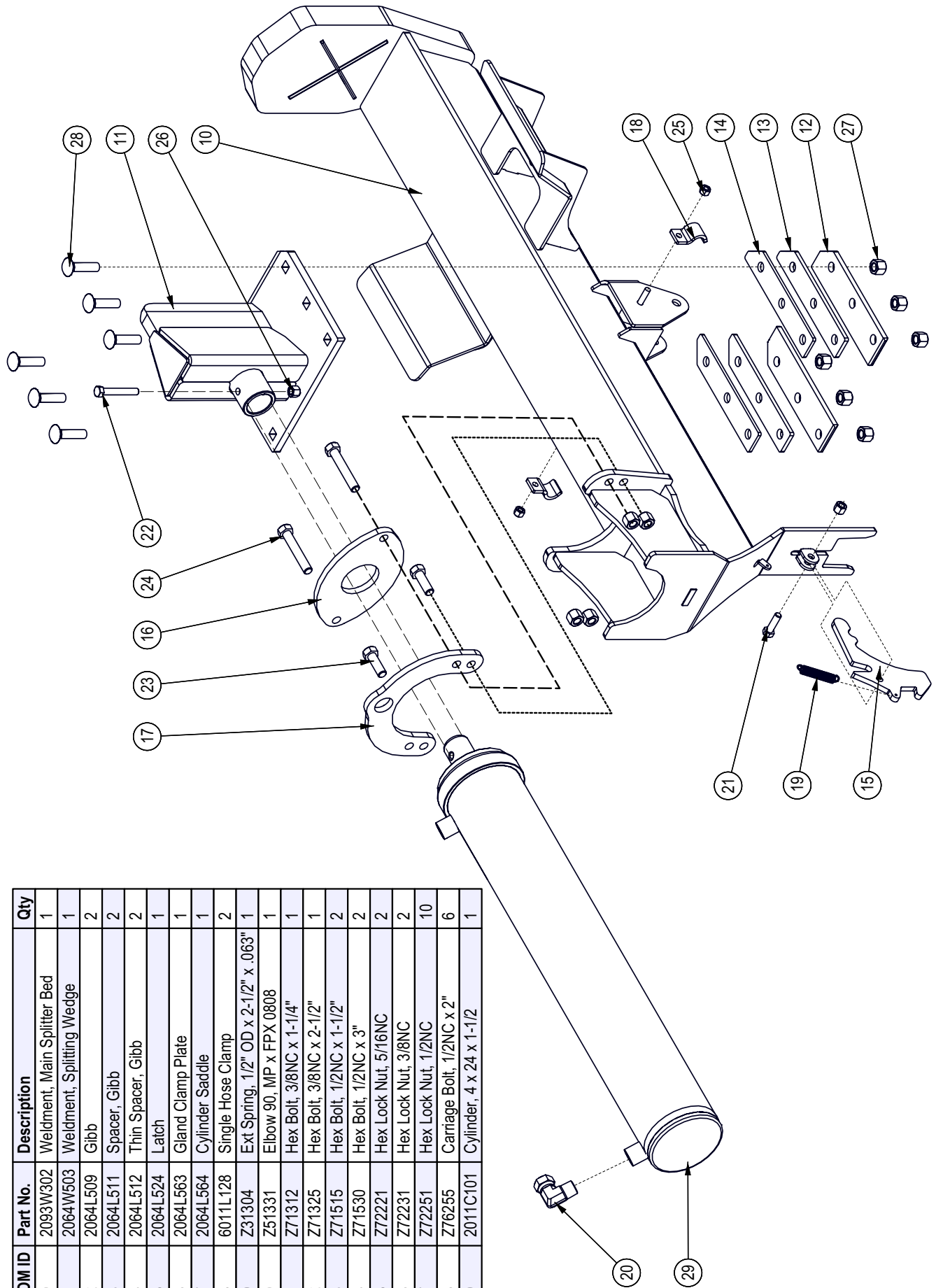
Main Frame Assembly



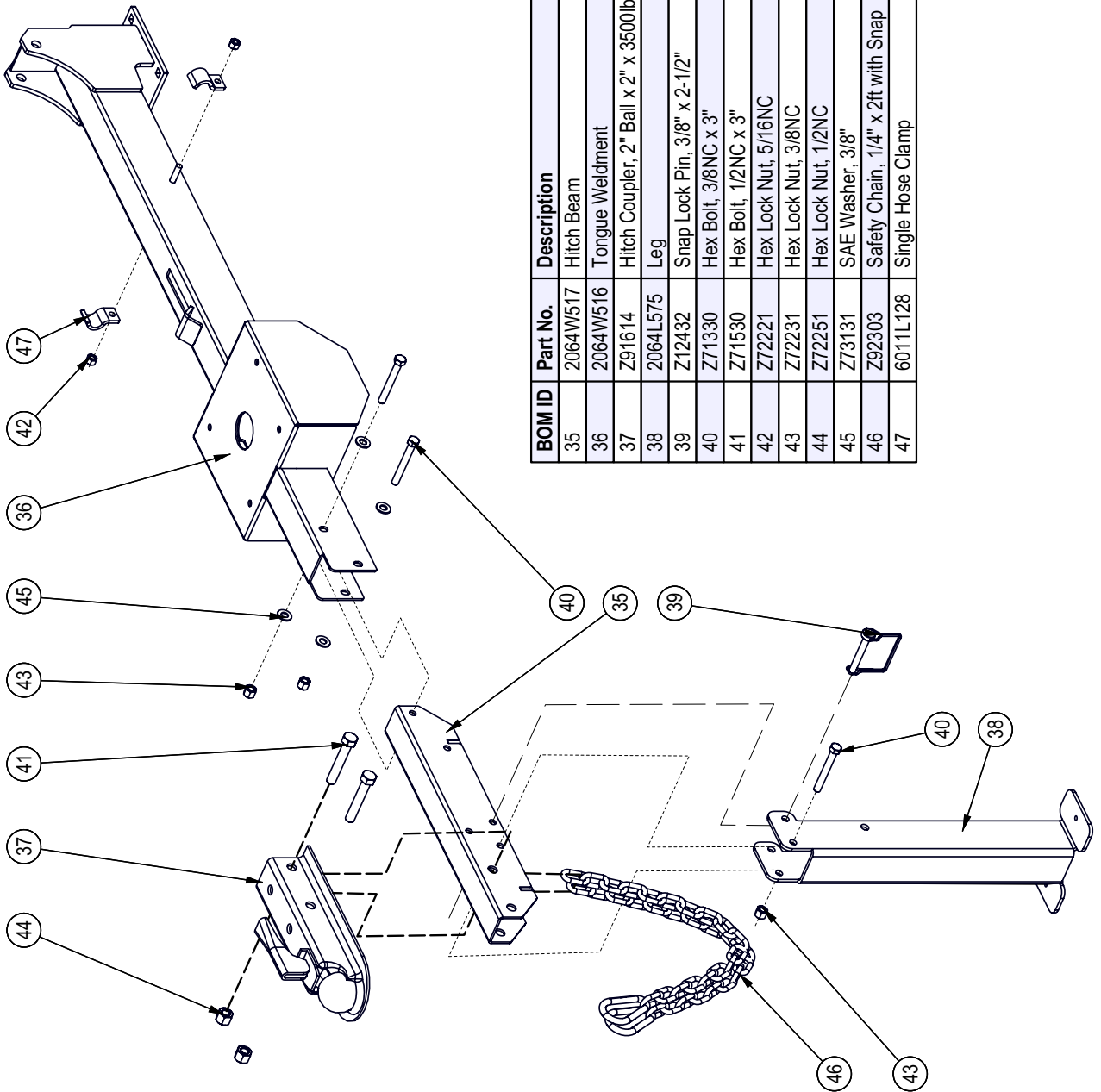
BOM ID	Part No.	Description	Qty
1	Z51192	Socket Plug, MP 08	1
2	Z51383	Elbow 90, MORB x FFX 0808	1
3	Z55402	Vented Plug Dipstick x 5"	1
4	Z71215	Hex Bolt, 5/16NC x 1-1/2"	4
5	Z71540	Hex Bolt, 1/2NC x 4"	1
6	Z72221	Hex Lock Nut, 5/16NC	4
7	Z72231	Hex Lock Nut, 3/8NC	4
8	Z72251	Hex Lock Nut, 1/2NC	1
9	Z76232	Carriage Bolt, 3/8NC x 1-1/4"	4
10	Z79401	Hose Clamp, SAE #16 (1-1/2")	1
11	Z51113	Pipe Nipple, MP08 x 3"	1

Cylinder Assembly

BOM ID	Part No.	Description	Qty
10	2093W302	Weldment, Main Splitter Bed	1
11	2064W503	Weldment, Splitting Wedge	1
12	2064L509	Gibb	2
13	2064L511	Spacer, Gibb	2
14	2064L512	Thin Spacer, Gibb	2
15	2064L524	Latch	1
16	2064L563	Gland Clamp Plate	1
17	2064L564	Cylinder Saddle	1
18	6011L128	Single Hose Clamp	2
19	Z31304	Ext Spring, 1/2" OD x 2-1/2" x .063"	1
20	Z51331	Elbow 90, MP x FPX 0808	1
21	Z71312	Hex Bolt, 3/8NC x 1-1/4"	1
22	Z71325	Hex Bolt, 3/8NC x 2-1/2"	1
23	Z71515	Hex Bolt, 1/2NC x 1-1/2"	2
24	Z71530	Hex Bolt, 1/2NC x 3"	2
25	Z72221	Hex Lock Nut, 5/16NC	2
26	Z72231	Hex Lock Nut, 3/8NC	2
27	Z72251	Hex Lock Nut, 1/2NC	10
28	Z76255	Carriage Bolt, 1/2NC x 2"	6
29	2011C101	Cylinder, 4 x 24 x 1-1/2	1

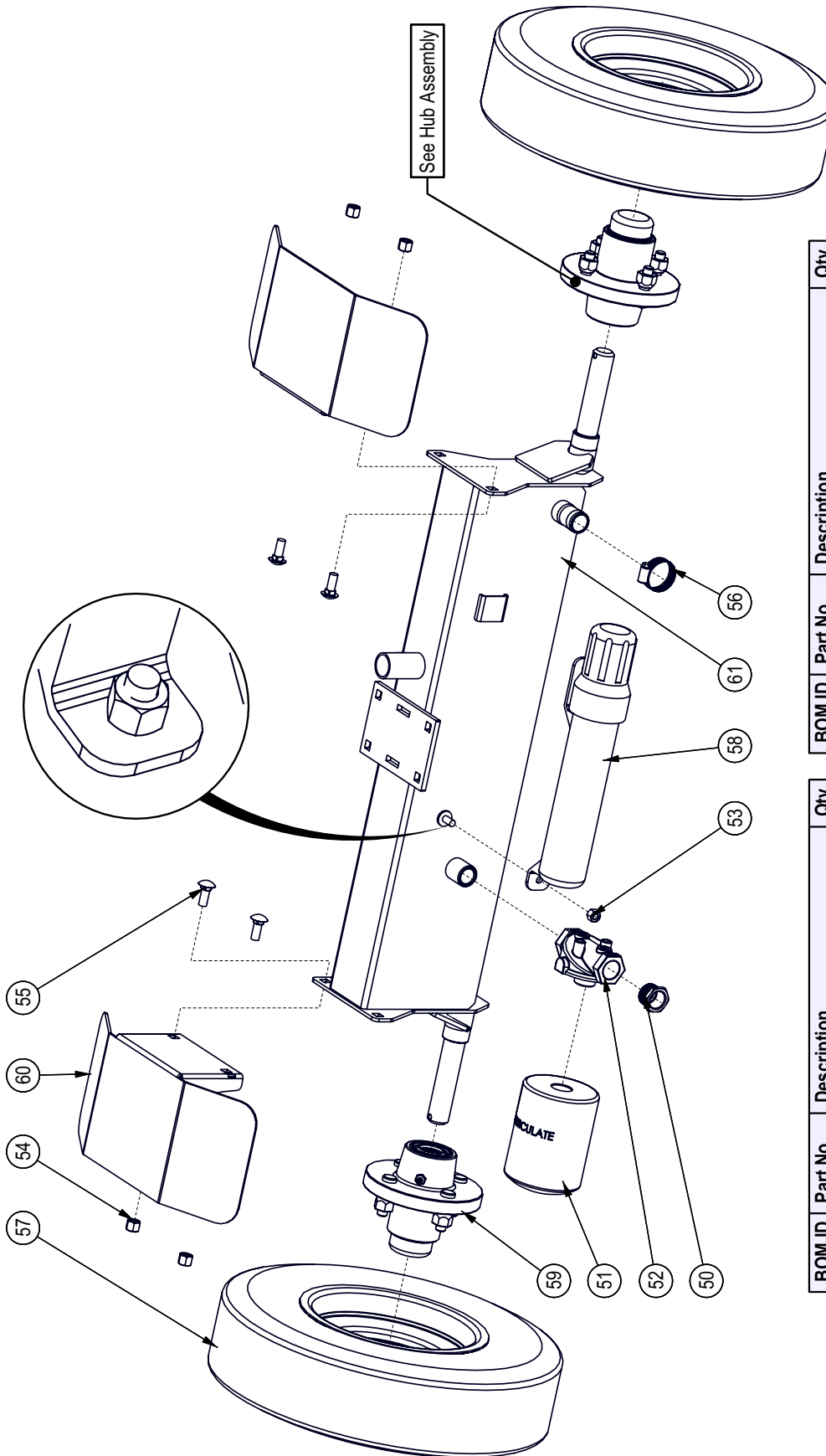


Hitch and Tongue Assembly



BOM ID	Part No.	Description	Qty
35	2064W517	Hitch Beam	1
36	2064W516	Tongue Weldment	1
37	Z91614	Hitch Coupler, 2" Ball x 2" x 3500lbs	1
38	2064L575	Leg	1
39	Z12432	Snap Lock Pin, 3/8" x 2-1/2"	1
40	Z71330	Hex Bolt, 3/8NC x 3"	3
41	Z71530	Hex Bolt, 1/2NC x 3"	2
42	Z72221	Hex Lock Nut, 5/16NC	2
43	Z72231	Hex Lock Nut, 3/8NC	3
44	Z72251	Hex Lock Nut, 1/2NC	2
45	Z73131	SAE Washer, 3/8"	4
46	Z92303	Safety Chain, 1/4" x 2ft with Snap	2
47	6011L128	Single Hose Clamp	2

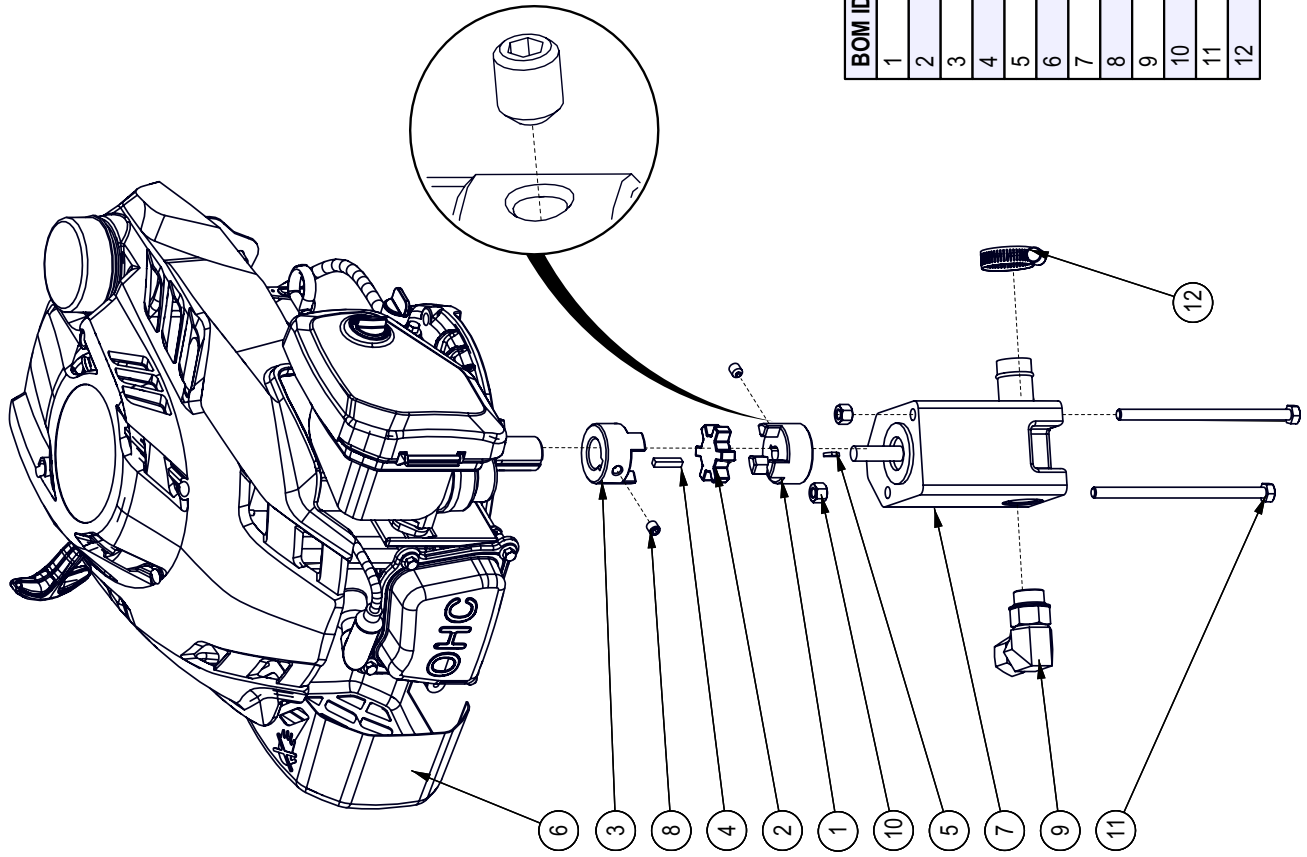
Tank Assembly



BOM ID	Part No.	Description	Qty
57	Z91301	4.80-8 LRB SportTrail 4on4"	2
58	Z96505	Manual Tube, 2" Short	1
59	Z91202	Idler Hub Assy, 1000lbs x 4on4" x 1"	2
60	2064L562	Plain Fender	2
61	2064W502	Tank Weldment	1

BOM ID	Part No.	Description	Qty
50	Z51221	Straight, MP x FP 1208	1
51	Z55301	Particulate Filter, FP12	1
52	Z55302	Filter Cap, MP12 x FP12	1
53	Z72221	Hex Lock Nut, 5/16NC	1
54	Z72231	Hex Lock Nut, 3/8NC	4
55	Z76231	Carriage Bolt, 3/8NC x 1"	4
56	Z79401	Hose Clamp, SAE #16 (1-1/2")	1

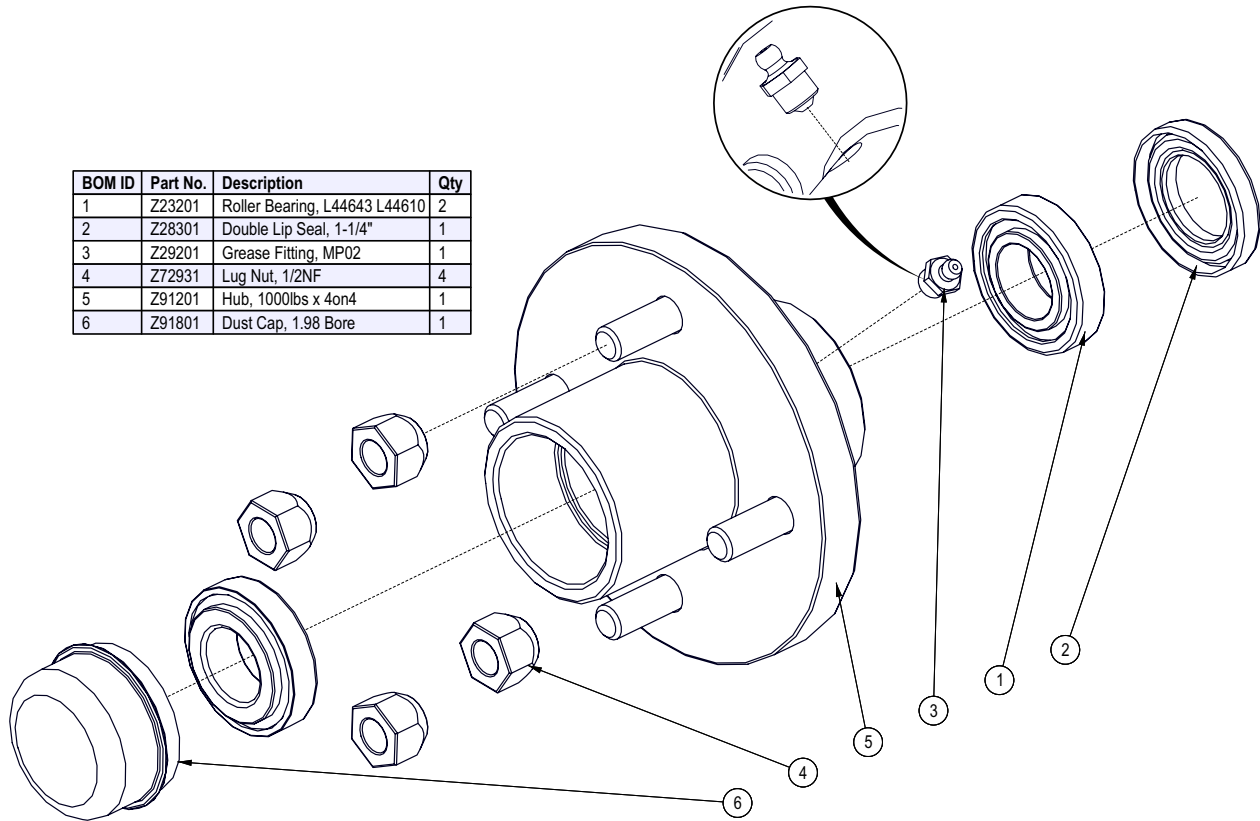
Engine & Pump Assembly



BOM ID	Part No.	Description	Qty
1	Z46407	Shaft Coupling, L075 x 7/16"	1
2	Z46408	Spider, L075	1
3	Z46433	Shaft Coupling, L075 x 7/8" w/ 3/16" Keyway	1
4	Z46521	Key, 3/16" x 3/16" x 7/8"	1
5	Z46591	Woodruff Key, 3/32" x 1/2"	1
6	Z47711	Subaru EA190V5003M, Rope	1
7	Z53201	Two-Stage Pump, 11GPM	1
8	Z74121	Set Screw, 5/16NC x 3/8"	2
9	Z51383	Elbow 90, MORB x FPX 0808	1
10	Z72221	Hex Lock Nut, 5/16NC	2
11	Z71255	Hex Bolt, 5/16NC x 5-1/2"	2
12	Z79401	Hose Clamp, SAE #16 (1-1/2")	1

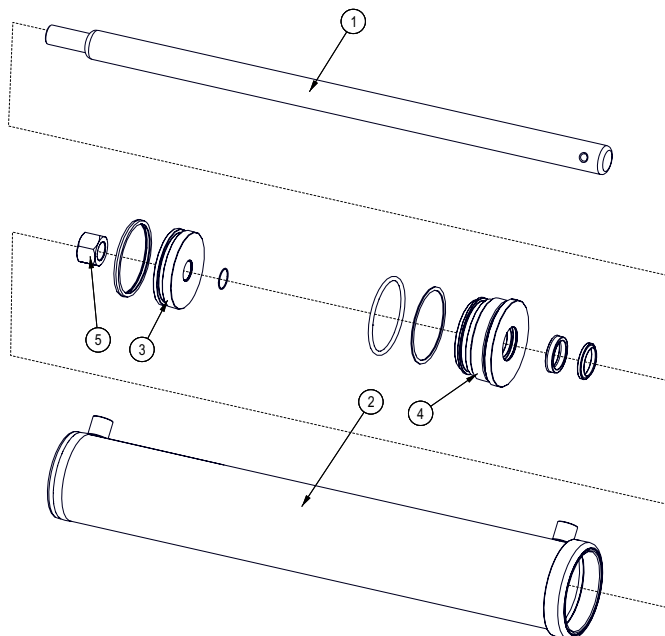
Hub Assembly

BOM ID	Part No.	Description	Qty
1	Z23201	Roller Bearing, L44643 L44610	2
2	Z28301	Double Lip Seal, 1-1/4"	1
3	Z29201	Grease Fitting, MP02	1
4	Z72931	Lug Nut, 1/2NF	4
5	Z91201	Hub, 1000lbs x 4on4	1
6	Z91801	Dust Cap, 1.98 Bore	1



Cylinder Assembly

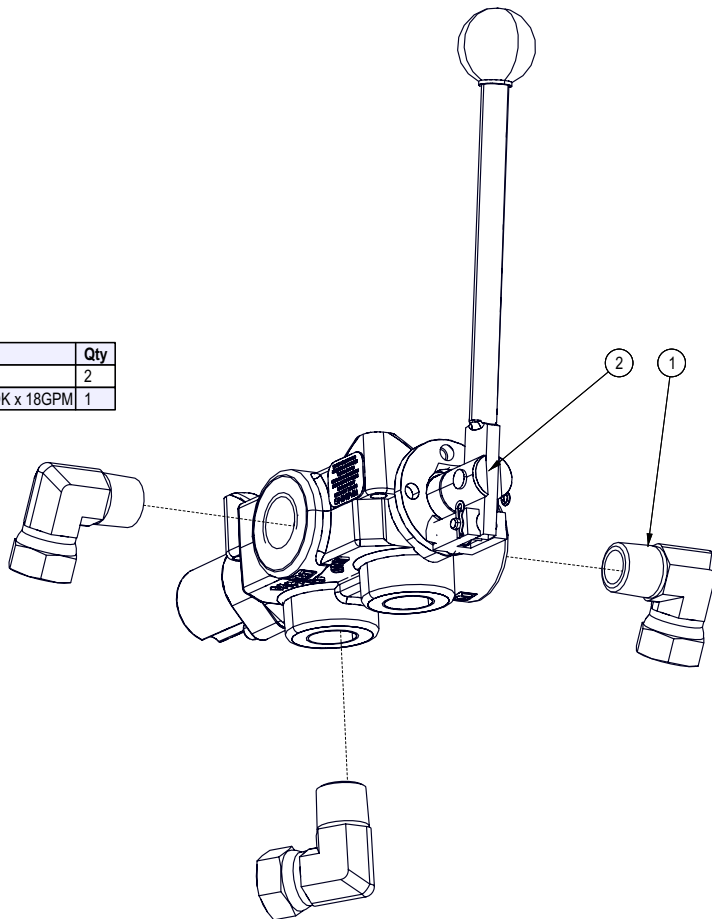
Seal Kit #SLK-4015



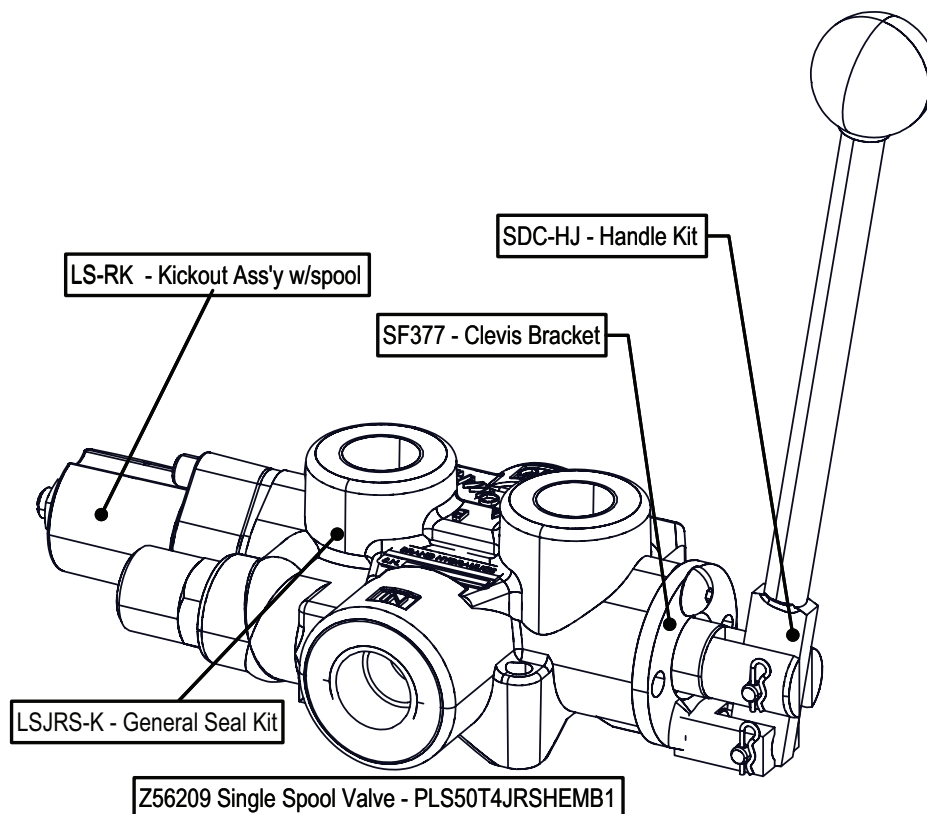
BOM ID	Part No.	Description	Qty
1	2011C1012	Rod, 1-1/2 x 1	1
2	2011C1014	Barrel, 4"	1
3	P100-400SP	Piston, 4" Bore	1
4	G400-150S	Gland, 4" x 1-1/2"	1
5	Z72276	Hex Lock Nut 1NF Grade 8	1

Valve Assembly

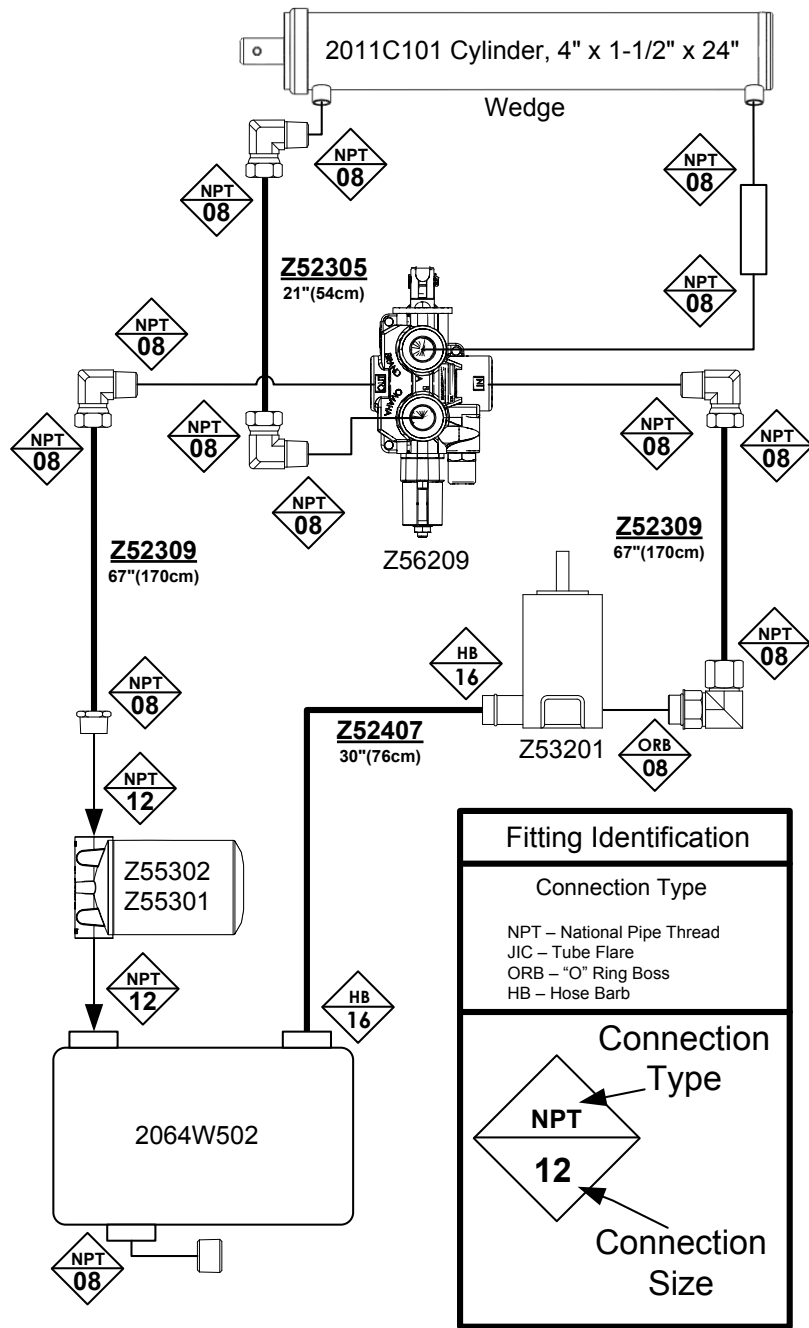
BOM ID	Part No.	Description	Qty
1	Z51331	Elbow 90, MP x FPX 0808	2
2	Z56209	Single Spool Valve, OC Tandem SCDK x 18GPM	1



Z56209 Service Kits



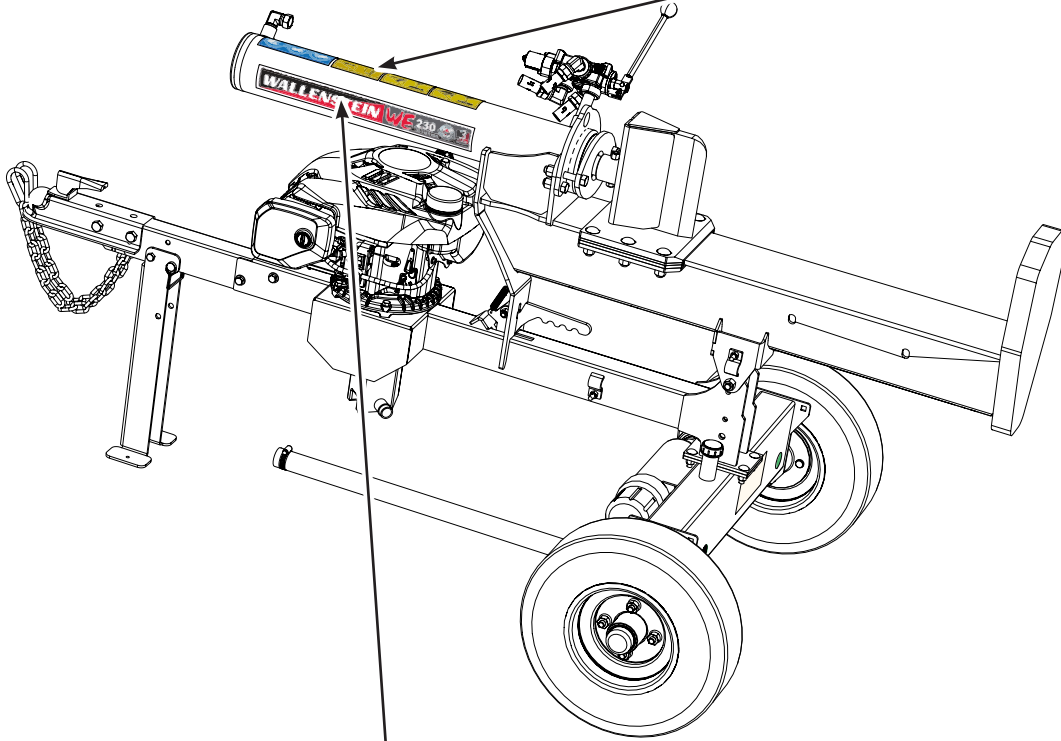
Hydraulic Schematic



Hydraulic Hose List

PART NUMBER	DESCRIPTION	QTY
2064F501	1/2" Hose, MP08 x MP08 x 19"	1
2064F504	Suction Hose, 1"x 30"	1
2064F502	1/2" Hose, MP08 x MP08 x 67"	1
2064F503	1/2" Hose, MP08 x MP08 x 72"	1

Label Layout



Z94666 x 2



Z94239 x 1



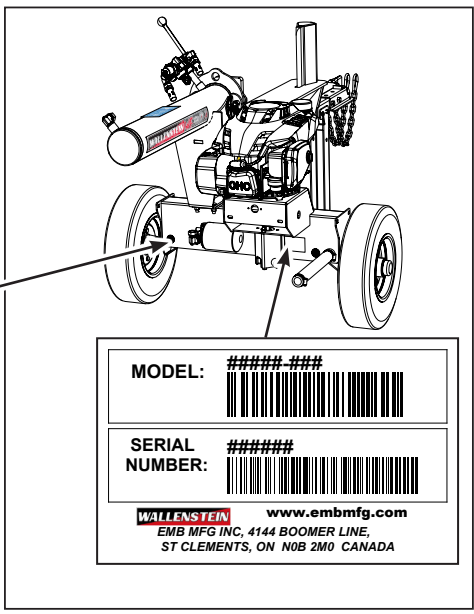
Z94119 x 1



Z94123 x 1



Z94124 x 1

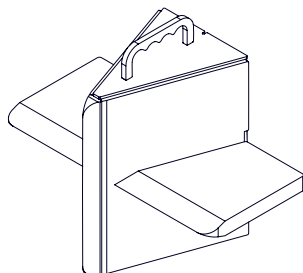


Z94428 x 2

Accessories

Call your dealer for pricing and availability

#W4110



#W4110 4 Way Wedge

Boost your productivity and make quick work out of logs by splitting four pieces at once. This is an ideal way to save time.

#W4204



#W4204 All Weather Wood Splitter Cover

Heavy duty industrial material, made in Canada. Helps protect your splitter from harsh elements.



**#Z97059 WE220 & WE230
WOODSPLITTERS OPERATOR'S MANUAL**

Available as a download at
www.wallensteinequipment.com