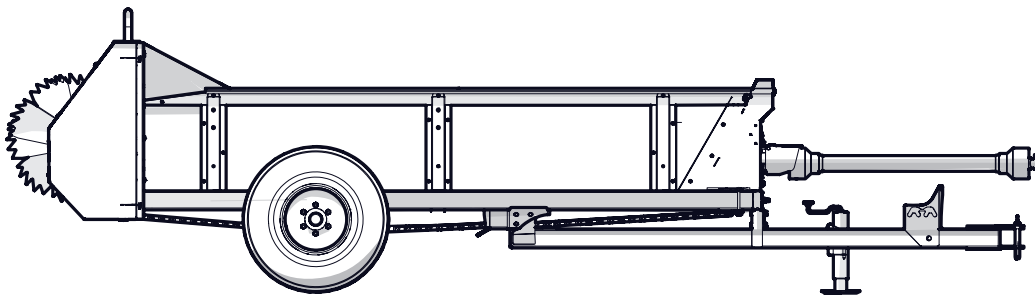


PARTS MANUAL

Serial Number 7130P002 & Up

MX130P / MX130PT MANURE SPREADER



Foreword

This Wallenstein parts manual is prepared to assist customers in ordering quality OEM replacement parts.

Regular maintenance combined with replacing old, worn or broken parts with the correct OEM parts is essential in prolonging the life of your Wallenstein product. Refer to this manual to identify replacement parts.

To order parts, contact your Wallenstein dealer or distributor. Have the product model and serial number handy.

If your dealer is no longer available, please go to our website: <http://wallensteinequipment.com> and click on the [Dealer Locator](#) to find the nearest dealer.

All information contained in this parts manual is current as per the revision date at the bottom of the page. Wallenstein reserves the right to change product specifications at any time without notice.

If your product specifications differ from those contained in this manual, contact Wallenstein for current information.

Reproduction of information in this parts manual is prohibited without prior written permission from Wallenstein Equipment Inc.

Wallenstein Equipment Inc. • © 2019

WARNING!

Refer to the operators manual for safe operation and maintenance.

Maintenance should be performed by trained personnel only.

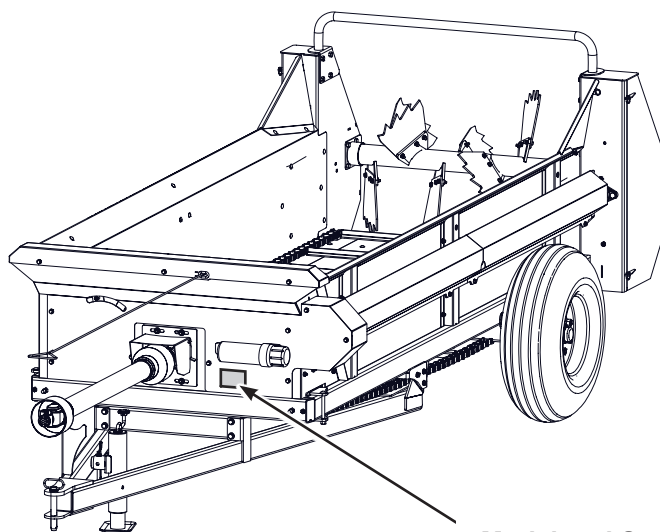
Serial Number Location

Always provide the model and serial number of your Wallenstein product when ordering parts or requesting service or other information. This information is found on the product information plate as shown below.

Record your product information here for future reference.

Model _____

Serial Number _____



Model and Serial Number Location

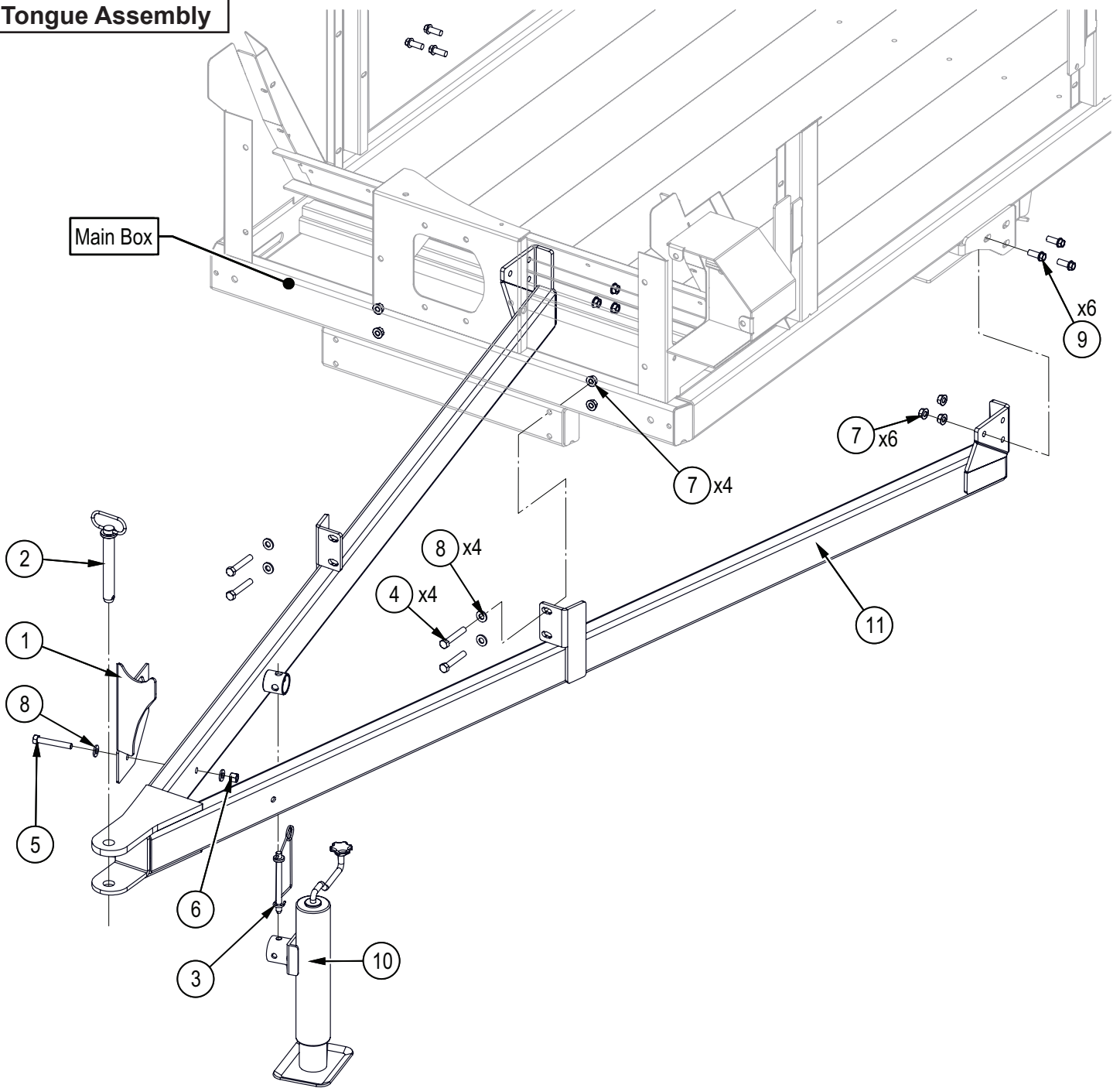
MX130P and MX130PT models share common parts except axle and tires.

www.wallensteinequipment.com

Contents

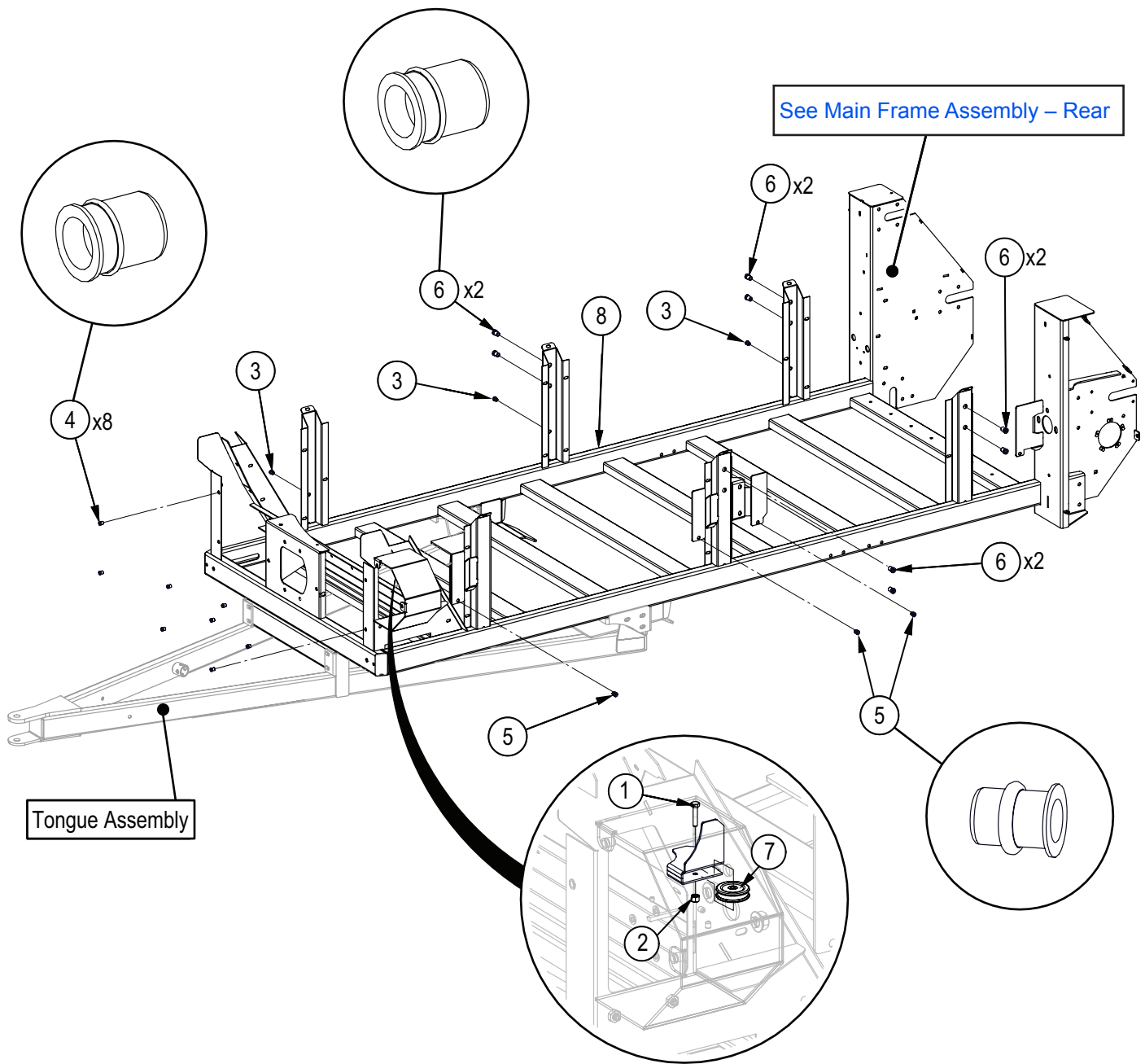
Tongue Assembly	4
Main Frame Assembly – Front	5
Main Frame Assembly – Rear	6
Axle Assembly – MX130P	7
Axle Assembly – MX130PT	8
Hub Assembly – MX130P	9
Hub Assembly – MX130PT	9
Ground Drive Box Assembly	10
Apron Drive Chain and Tensioner Assembly	11
Input Shaft Assembly	12
Beater Drive – Front	13
Engagement Ratchet Assembly	14
Beater Bar Assembly	15
Beater Drive Rear Assembly	16
Rear Apron – Drive Assembly	17
Front Shield Assembly	18
Front Box and Apron Flap	19
Main Box Panel Assembly	20
Rope Routing – Engagement Lever	21
Cable Routing – Beater Gearbox	21
Pillow Block	22
Decal Layout	23
Accessories	24
Common Bolt Torque Values	25
Hydraulic Fitting Torque Values	26
Wheel Lug Torque Values	26

Tongue Assembly



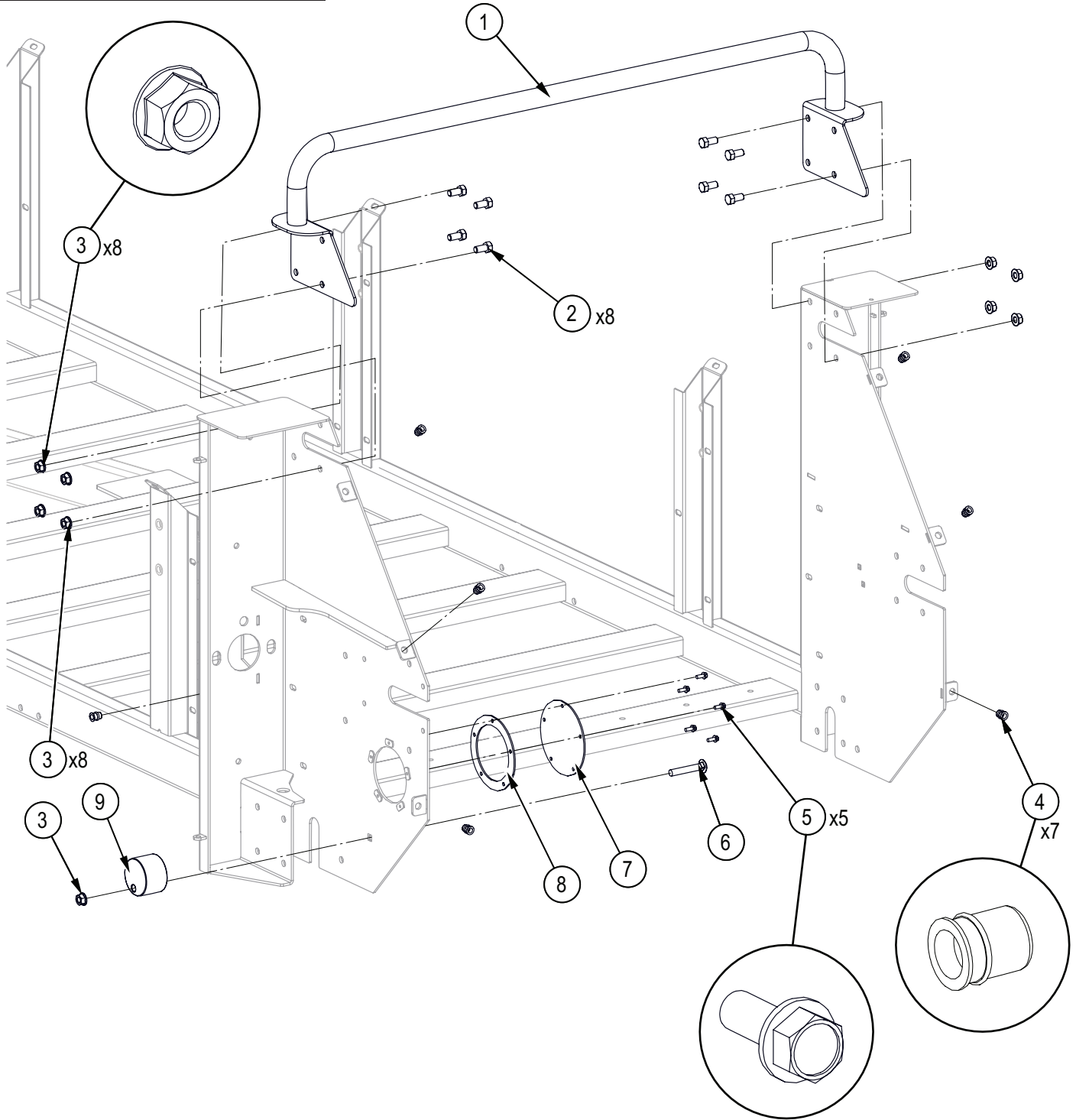
Item No.	Part No.	Description	Qty
1	7017L784	Angle, PTO & Hose Holder	1
2	Z11261	Hitch Pin, 1" x 6-1/4"	1
3	Z12441	Snap Lock Pin, 1/2" x 4-1/2"	1
4	Z71530	Hex Bolt, 1/2NC x 3"	4
5	Z71532	Hex Bolt, 1/2NC x 3-1/4"	1
6	Z72251	Hex Lock Nut, 1/2NC	1
7	Z72551	Serrated Flange Locknut, 1/2NC	10
8	Z73151	SAE Washer, 1/2"	6
9	Z76152	Flange Bolt, 1/2NC x 1-1/4"	6
10	Z91513	Trailer Jack, Top Wind x 2000lbs	1
11	7017W703	Tongue	1

Main Frame Assembly – Front



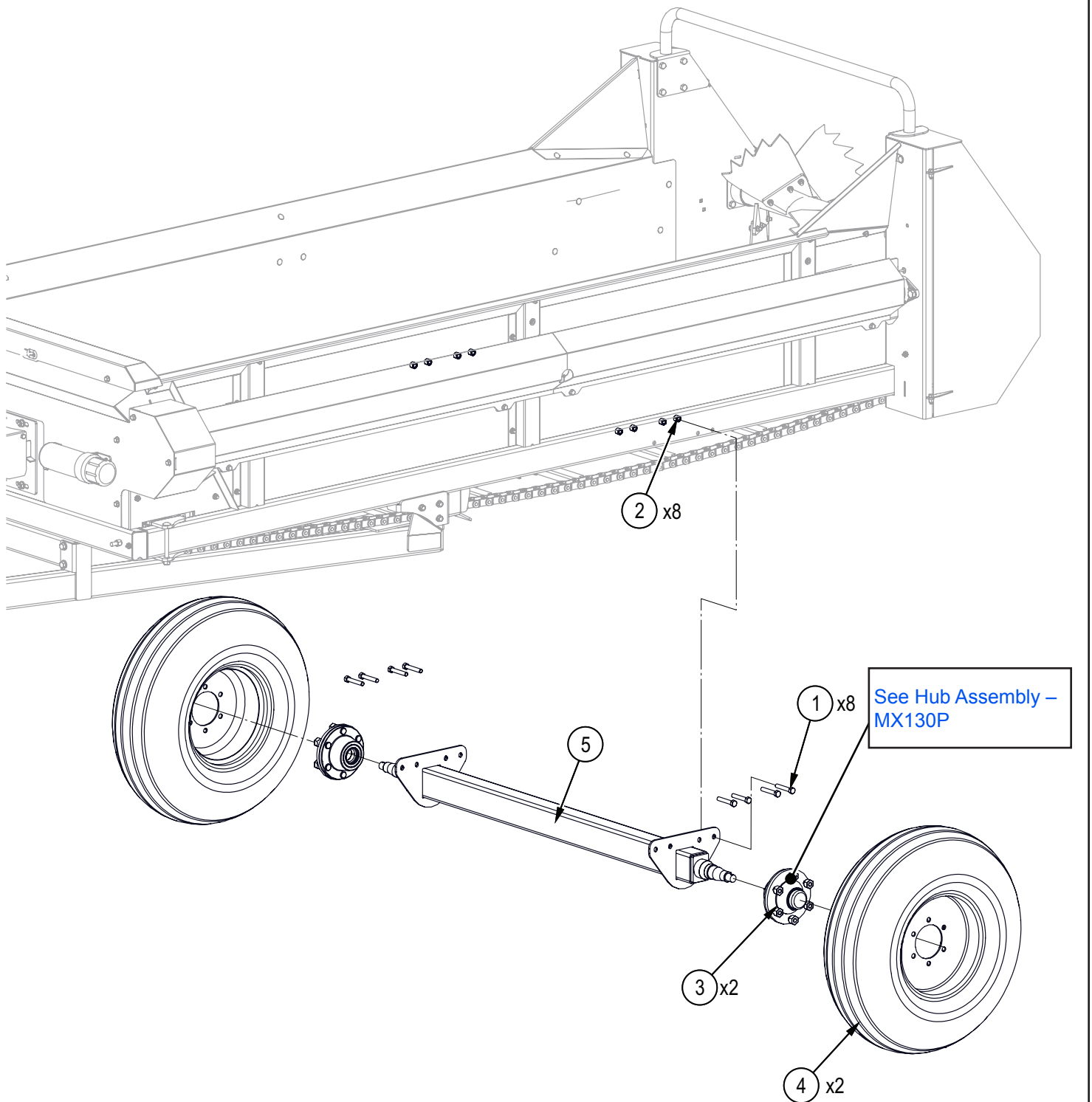
Item No.	Part No.	Description	Qty
1	Z71112	Hex Bolt, 1/4NC x 1-1/4"	1
2	Z72211	Hex Lock Nut, 1/4NC	1
3	Z72956	Rivet Nut, 5/16NC x 150	3
4	Z72958	Rivet Nut, 3/8NC x 150	8
5	Z72959	Rivet Nut, 3/8NC x 312	3
6	Z72960	Rivet Nut, 1/2NC x 200	8
7	Z92203	Groove Pulley, 2" x 1/4"	1
8	7017W701	Main Box	1

Main Frame Assembly – Rear



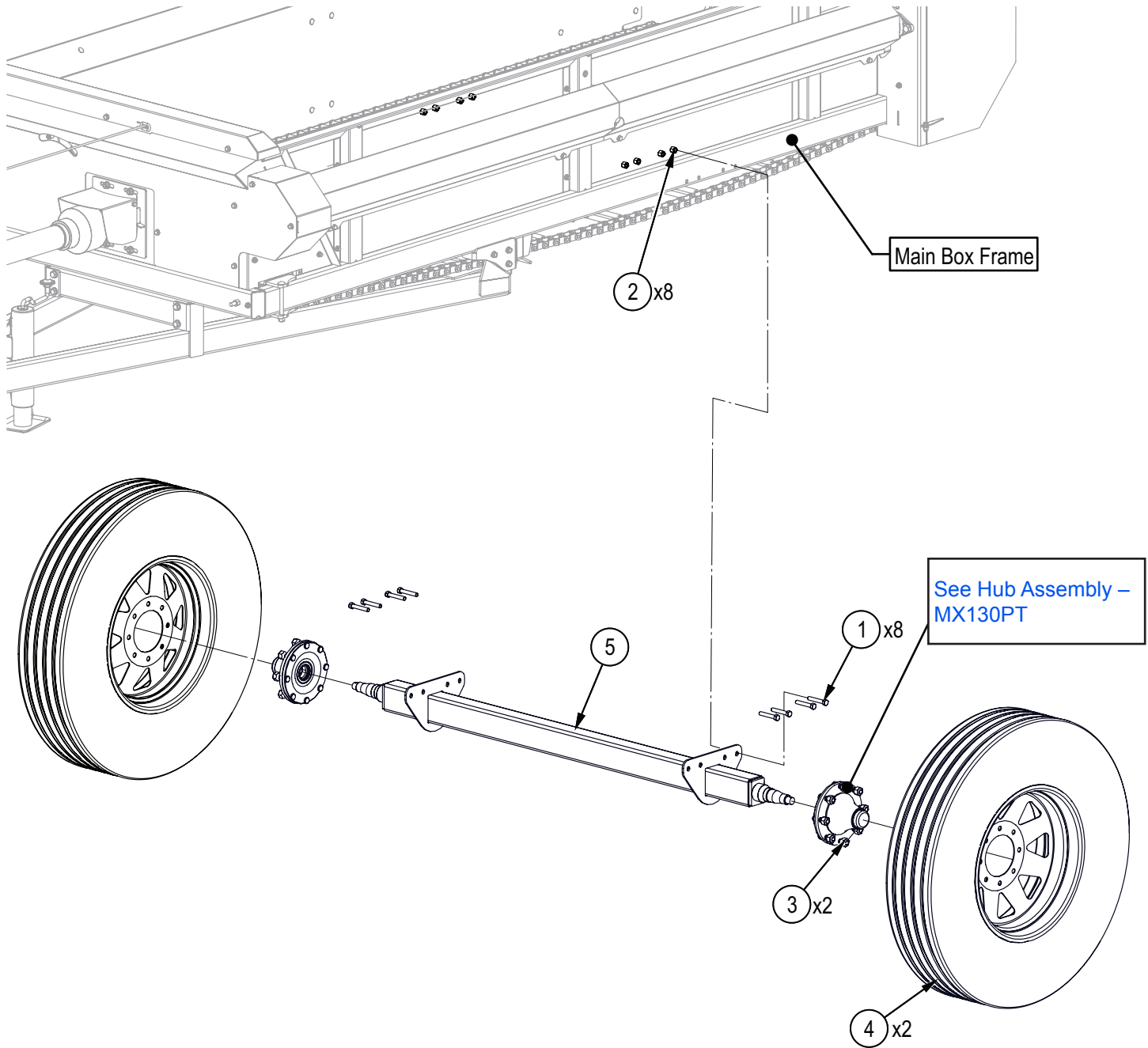
Item No.	Part No.	Description	Qty
1	7017W711	Brace, Beater Housing	1
2	Z71510	Hex Bolt, 1/2NC x 1"	8
3	Z72551	Serrated Flange Locknut, 1/2NC	9
4	Z72959	Rivet Nut, 3/8NC x 312	7
5	Z76117	Flange Bolt, 1/4NC x 5/8"	5
6	Z762512	Carriage Bolt, 1/2NC x 3"	1
7	7017L777	Access Cover	1
8	7017S712	Gasket, Access Cover	1
9	7017M710	Chain Tightner, UHMW	1

Axle Assembly – MX130P



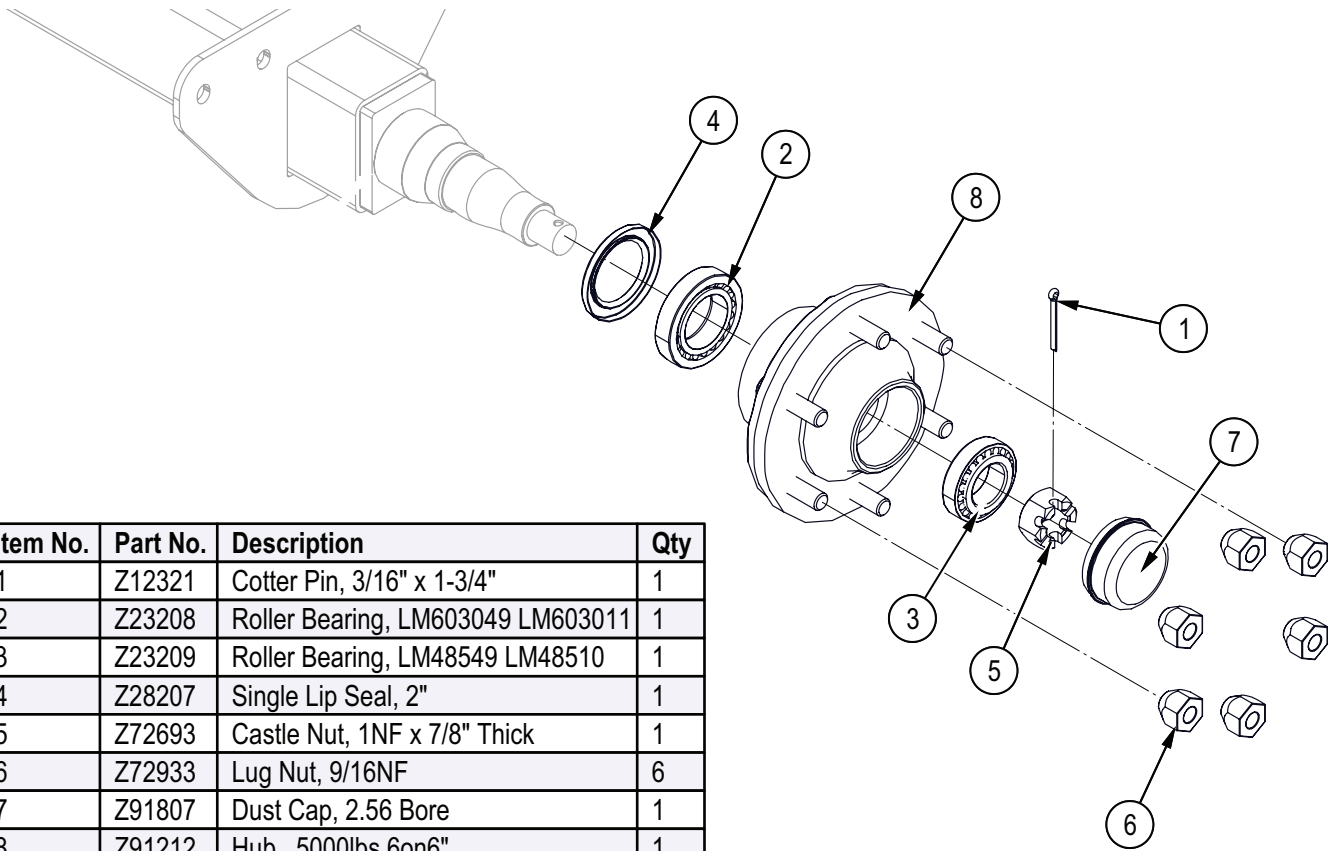
Item No.	Part No.	Description	Qty
1	Z71530	Hex Bolt, 1/2NC x 3"	8
2	Z72251	Hex Lock Nut, 1/2NC	8
3	Z91213	Idler Hub Assy, 5000lbs x 6on6"	2
4	Z91308	11L-15SL I-1 (TL) 12PR Farm Specialist 6on6"	2
5	7017W712	Axle, Bolt On	1

Axle Assembly – MX130PT



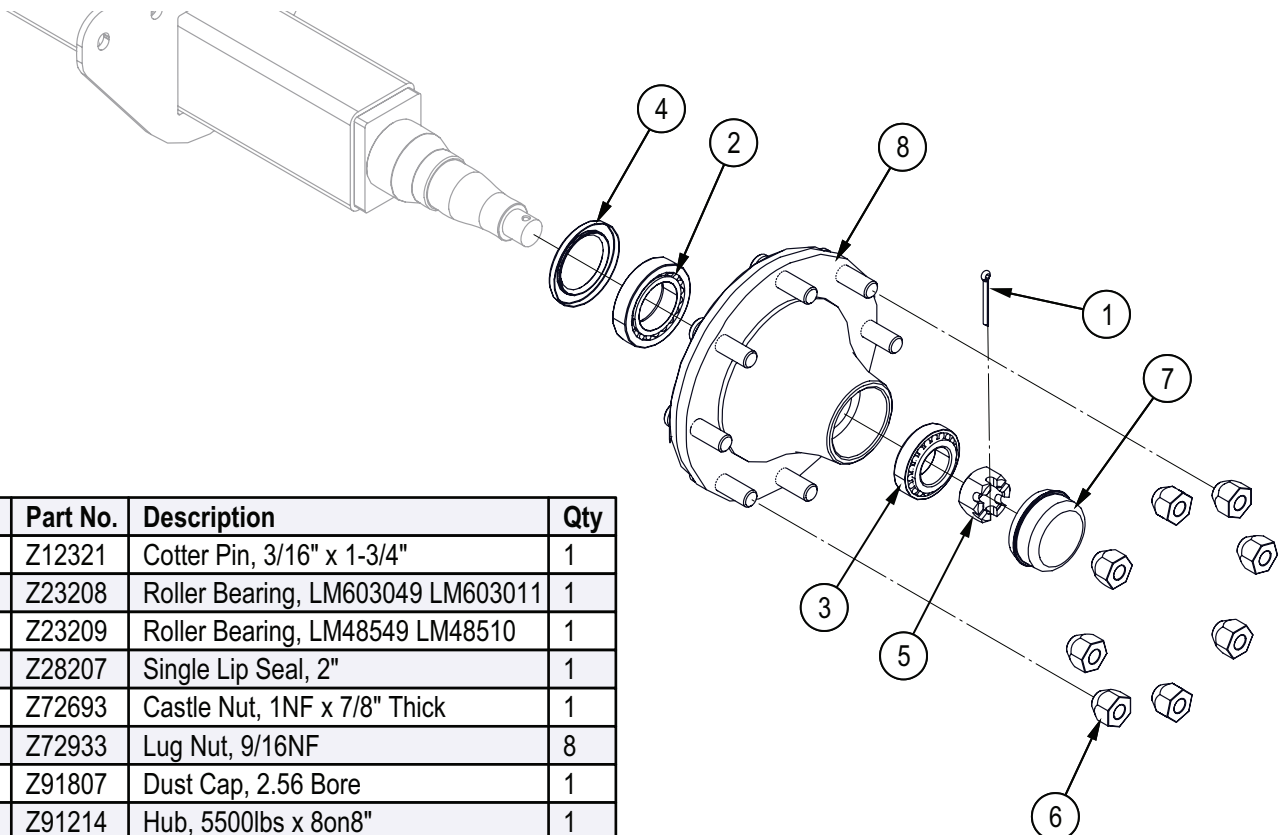
Item No.	Part No.	Description	Qty
1	Z71530	Hex Bolt, 1/2NC x 3"	8
2	Z72251	Hex Lock Nut, 1/2NC	8
3	Z91215	Idler Hub Assy, 5500lbs x 8on8"	2
4	Z91331	11R22.5 Re-Tread x 8on8"	2
5	7017W721	Axle, Wide	1

Hub Assembly – MX130P



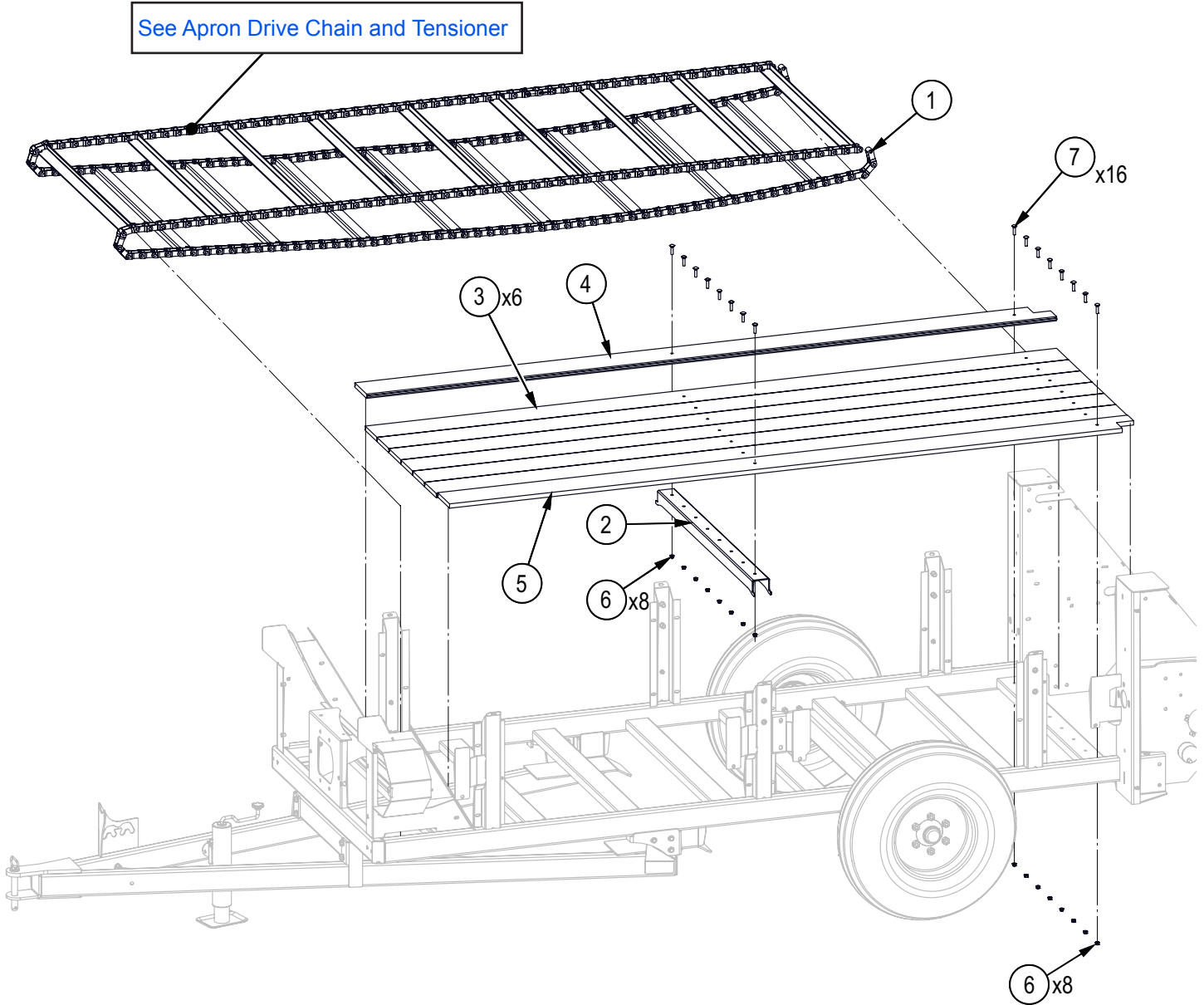
Item No.	Part No.	Description	Qty
1	Z12321	Cotter Pin, 3/16" x 1-3/4"	1
2	Z23208	Roller Bearing, LM603049 LM603011	1
3	Z23209	Roller Bearing, LM48549 LM48510	1
4	Z28207	Single Lip Seal, 2"	1
5	Z72693	Castle Nut, 1NF x 7/8" Thick	1
6	Z72933	Lug Nut, 9/16NF	6
7	Z91807	Dust Cap, 2.56 Bore	1
8	Z91212	Hub, 5000lbs 6on6"	1

Hub Assembly – MX130PT



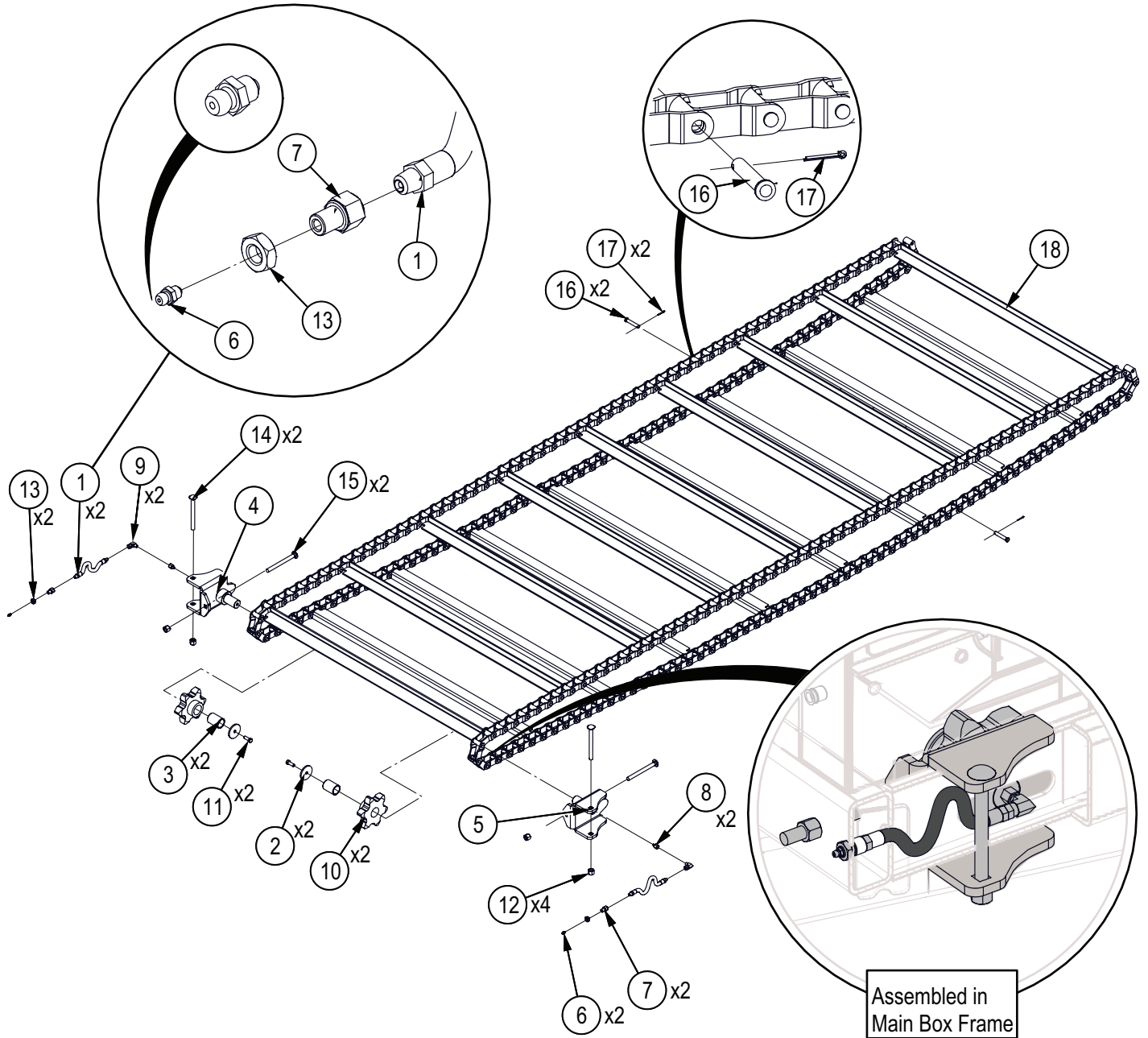
Item No.	Part No.	Description	Qty
1	Z12321	Cotter Pin, 3/16" x 1-3/4"	1
2	Z23208	Roller Bearing, LM603049 LM603011	1
3	Z23209	Roller Bearing, LM48549 LM48510	1
4	Z28207	Single Lip Seal, 2"	1
5	Z72693	Castle Nut, 1NF x 7/8" Thick	1
6	Z72933	Lug Nut, 9/16NF	8
7	Z91807	Dust Cap, 2.56 Bore	1
8	Z91214	Hub, 5500lbs x 8on8"	1

Ground Drive Box Assembly



Item No.	Part No.	Description	Qty
1	7017A711	Assembly, Apron Chain 667X	1
2	7017L729	Channel, Floor	1
3	7017S706	Floor Board	6
4	7017S709	Floor Board RH	1
5	7017S710	Floor Board LH	1
6	Z72531	Serrated Flange Locknut, 3/8NC	16
7	Z76234	Carriage Bolt, 3/8NC x 1-1/2"	16

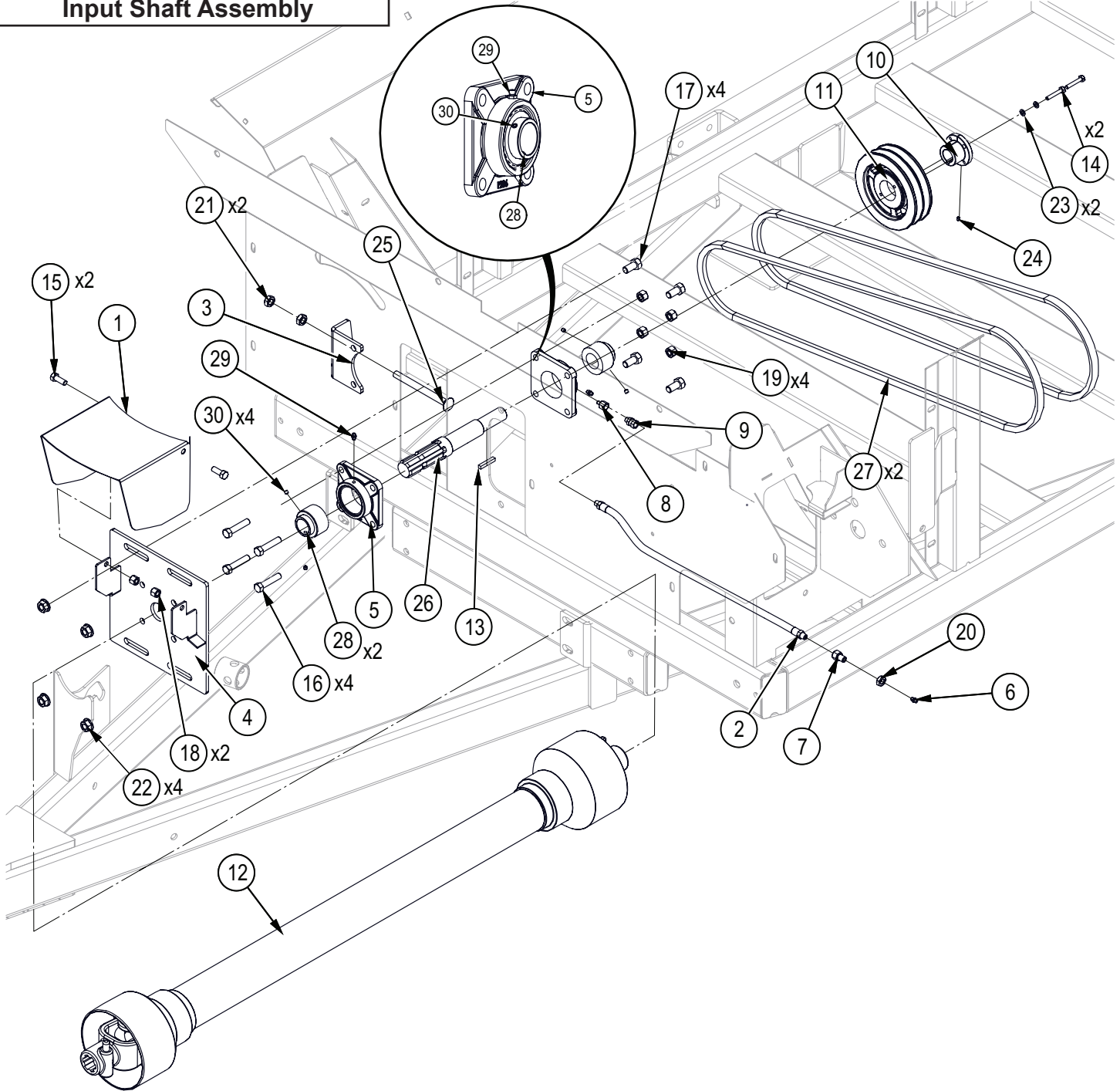
Apron Drive Chain and Tensioner Assembly



Item No.	Part No.	Description	Qty
1	7017F703	1/4" Grease Whip, MP02 x MP02 x 7"	2
2	7017L778	Washer, Sprocket Trap	2
3	7017M713	Bushing, 1-1/4 x 1-1/2 x 2	2
4	7017W709	Chain Tightener, Apron Front RH	1
5	7017W709H	Chain Tightener, Apron Front LH	1
6	Z29202	Grease Fitting, 1/4NF	2
7	Z29206	Bulkhead, FP x FP 0402 x 7/16NC	2
8	Z29303	Grease Fitting, FP02 x 1/4NF	2
9	Z29307	Elbow 90 Grease Fitting, MP x FPX 0202	2
10	Z42811	Sprocket, #667 x 6 x 1-1/2"	2

Item No.	Part No.	Description	Qty
11	Z71310	Hex Bolt, 3/8NC x 1"	2
12	Z72251	Hex Lock Nut, 1/2NC	4
13	Z72341	Jam Nut, 7/16NC	2
14	Z762515	Carriage Bolt, 1/2NC x 5-1/2"	2
15	Z76254	Carriage Bolt, 1/2NC x 5-1/2" Full Threads	2
16	7017S715	Pin, 667X Chain Clevis	2
17	Z12311	Cotter Pin, 1/8" x 1"	2
18	7017S714	667X Apron Chain Less Hardware	1

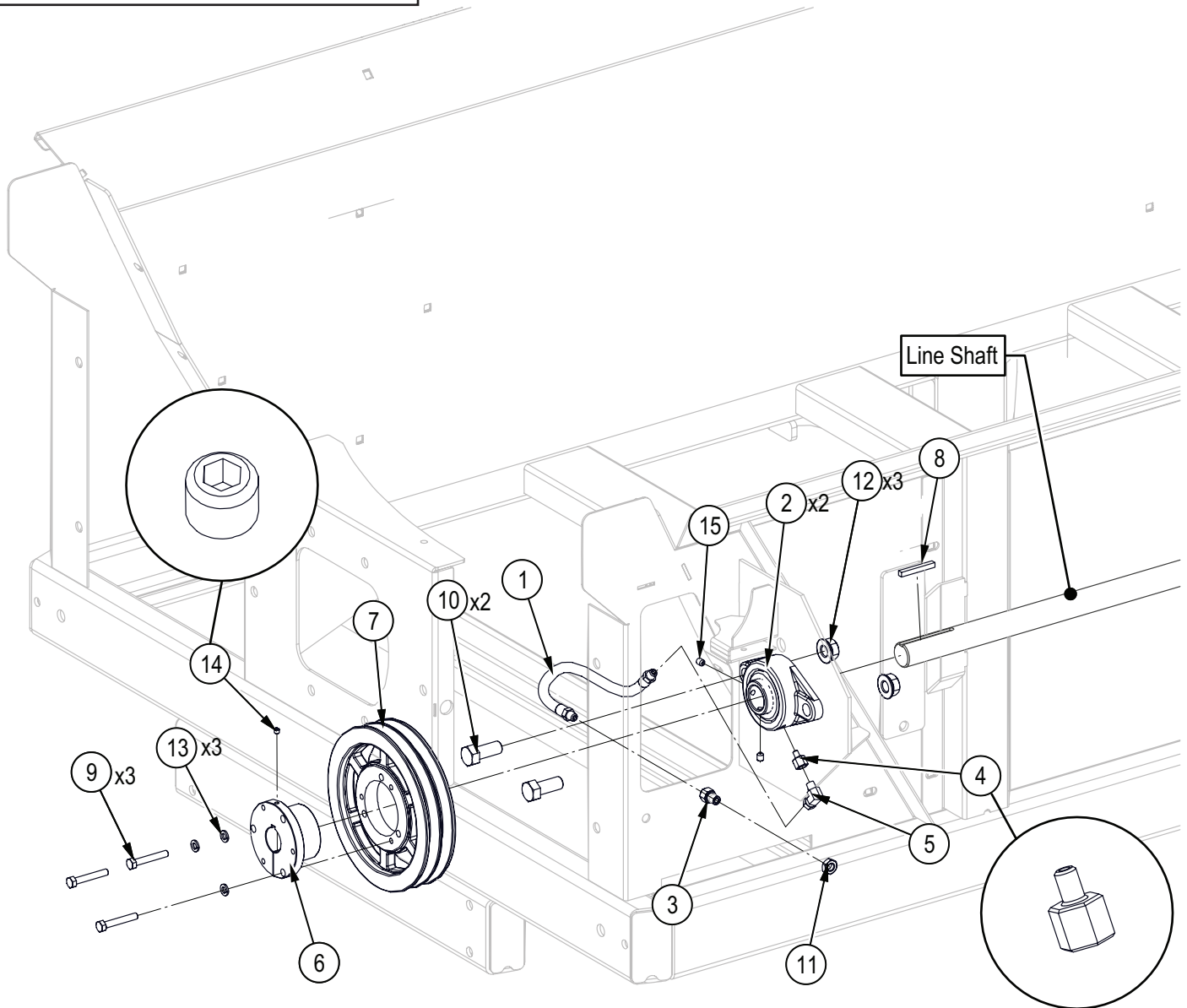
Input Shaft Assembly



Item No.	Part No.	Description	Qty
1	7015L541	PTO Cover	1
2	7017F702	1/4" Grease Whip, MP02 x MP02 x 25"	1
3	7017L723	Bracket, Belt Tightener	1
4	7017W718	PTO Spline Plate	1
5	Z25202	4-Bolt Flange Bearing, UCF206-20	2
6	Z29202	Grease Fitting, 1/4NF	1
7	Z29206	Bulkhead, FP x FP 0402 x 7/16NC	1
8	Z29303	Grease Fitting, FP02 x 1/4NF	1
9	Z29311	Grease Fitting, MP x FPX 0202	1
10	Z41510	Hub, L x 1"	1
11	Z41705	Double Sheave, 2MBL62 x L	1
12	Z44505	PTO Shaft, Series B5 x 55-1/4"	1
13	Z46532	Key, 1/4" x 1/4" x 1-1/2"	1
14	Z71115	Hex Bolt, 1/4NC x 1-1/2"	2
15	Z71310	Hex Bolt, 3/8NC x 1"	2
16	Z71420	Hex Bolt, 7/16NC x 2"	4

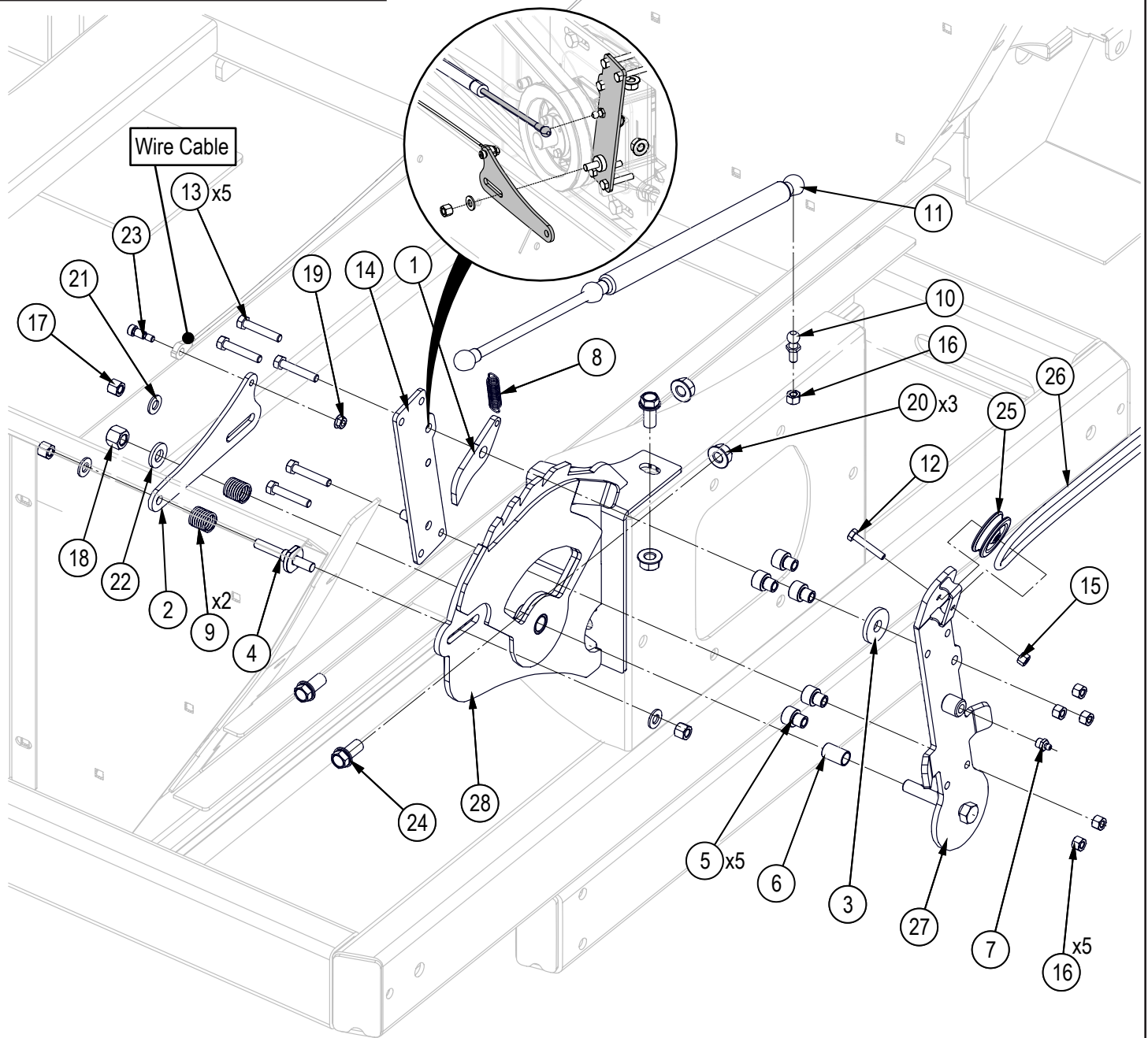
Item No.	Part No.	Description	Qty
17	Z71510	Hex Bolt, 1/2NC x 1"	4
18	Z72231	Hex Lock Nut, 3/8NC	2
19	Z72241	Hex Lock Nut, 7/16NC	4
20	Z72341	Jam Nut, 7/16NC	1
21	Z72351	Jam Nut, 1/2NC	2
22	Z72551	Serrated Flange Locknut, 1/2NC	4
23	Z73311	Split Lock Washer, 1/4"	2
24	Z74102	Set Screw, #10NC x 1/4"	1
25	Z76254	Carriage Bolt, 1/2NC x 5-1/2" Full Threads	1
26	7015M516	PTO Spline	1
27	Z41165	Single Belt, B76	2
28	Z25202-1	Bearing Insert, UC206-20 for Z25202	2
29	Z29202	Grease Fitting, 1/4NF	2
30	Z74112	Set Screw, 1/4NF x 1/4"	4

Beater Drive – Front



Item No.	Part No.	Description	Qty
1	7017F701	1/4" Grease Whip, MP02 x MP02 x 14"	1
2	Z25105	2-Bolt Flange Bearing, UCFL207-20	1
3	Z29206	Bulkhead, FP x FP 0402 x 7/16NC	1
4	Z29303	Grease Fitting, FP02 x 1/4NF	1
5	Z29307	Elbow 90 Grease Fitting, MP x FPX 0202	1
6	Z41522	Hub, SK x 1-1/4"	1
7	Z41709	Double Sheave, 2B80 x SK	1
8	Z46531	Key, 1/4" x 1/4" x 2"	1
9	Z71220	Hex Bolt, 5/16NC x 2"	3
10	Z71615	Hex Bolt, 5/8NC x 1-1/2"	2
11	Z72341	Jam Nut, 7/16NC	1
12	Z72561	Serrated Flange Locknut, 5/8NC	2
13	Z73321	Split Lock Washer, 5/16"	3
14	Z74111	Set Screw, 1/4NC x 1/4"	1
15	Z74122	Set Screw, 5/16NF x 3/8"	2

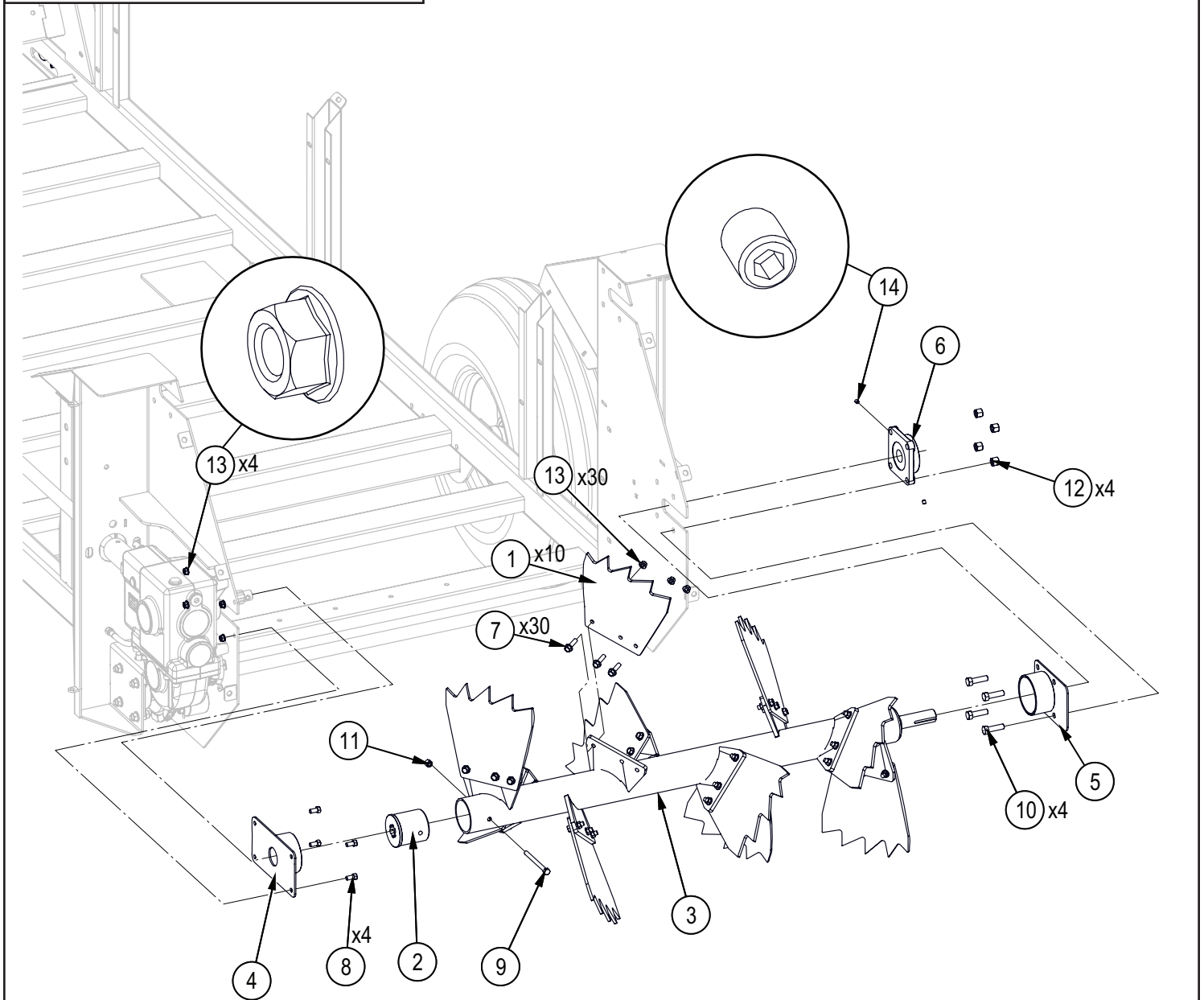
Engagement Ratchet Assembly



Item No.	Part No.	Description	Qty
1	7017L726	Dog	1
2	7017L782	Plate, Clutch Wire Catch	1
3	7017L787	Washer, Dog	1
4	7017M714	Posi Stop Stud 3/8, Adjustable	1
5	7017M717	Spacer, Dog Tension	5
6	Z27103	Fiberglide Bearing, 1/2" ID x 1" long x 1/16" wall	1
7	Z29201	Grease Fitting, MP02	1
8	Z31201	Ext Spring, 1/2" OD x 1-1/2" x .048"	1
9	Z32302	Comp Spring, 0.845" OD x 1-1/4" x 0.080"	2
10	Z34204	Ball Stud, 13mm x 5/16NC	1
11	Z34211	Gas Spring, 22mm OD x 18.25" x 8" x 100 lbs	1
12	Z71115	Hex Bolt, 1/4NC x 1-1/2"	1
13	Z71217	Hex Bolt, 5/16NC x 1-3/4"	5
14	7017W720	Weldment, Gas Spring Plate	1
15	Z72211	Hex Lock Nut, 1/4NC	1

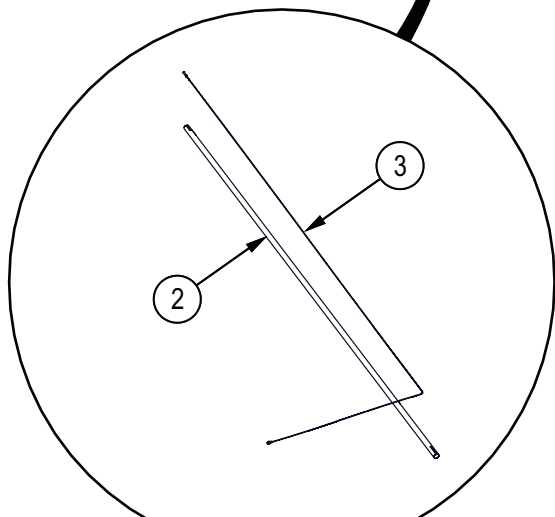
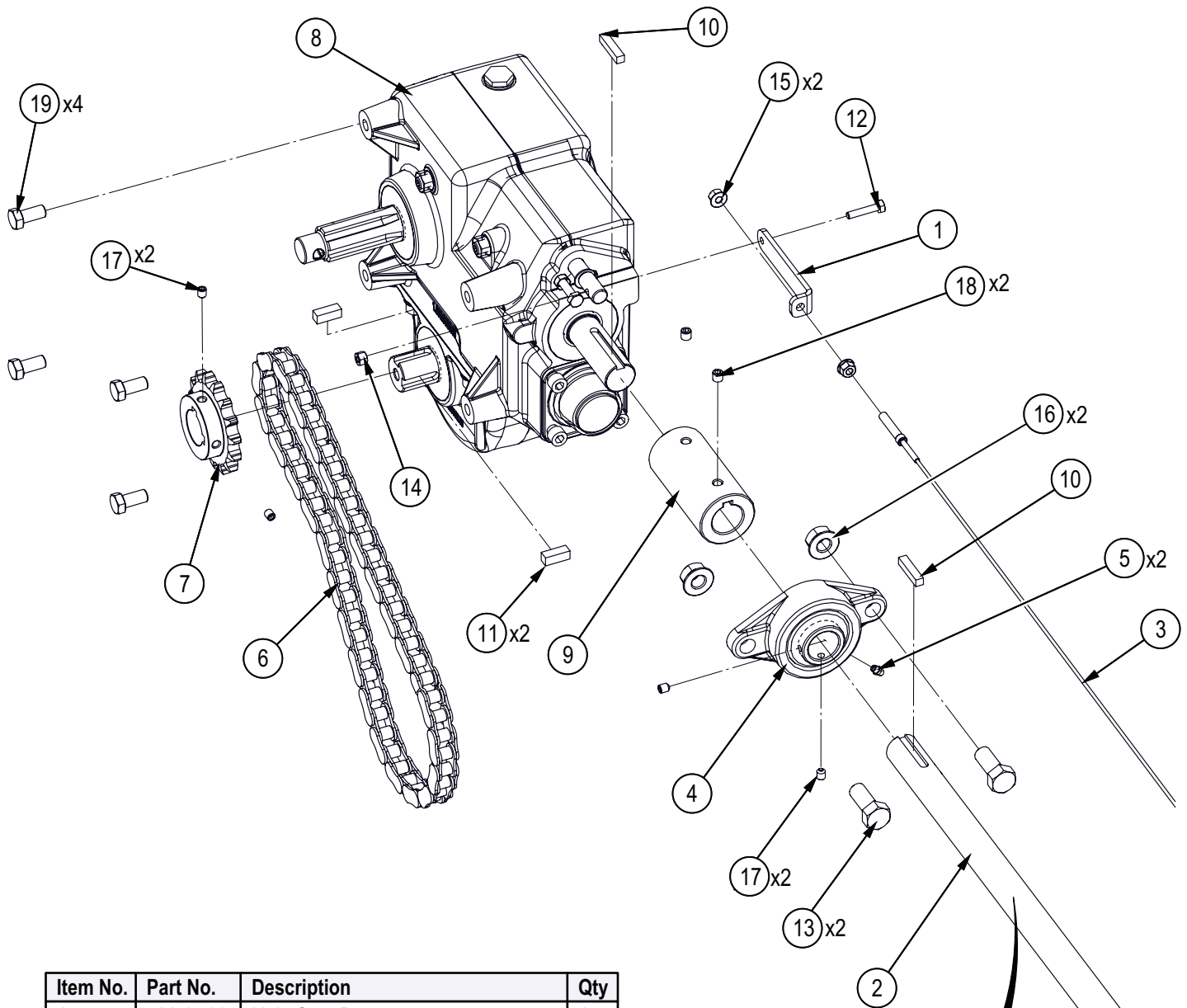
Item No.	Part No.	Description	Qty
16	Z72221	Hex Lock Nut, 5/16NC	6
17	Z72231	Hex Lock Nut, 3/8NC	3
18	Z72251	Hex Lock Nut, 1/2NC	1
19	Z72511	Serrated Flange Locknut, 1/4NC	1
20	Z72551	Serrated Flange Locknut, 1/2NC	3
21	Z73131	SAE Washer, 3/8"	3
22	Z73151	SAE Washer, 1/2"	1
23	Z75522	Shoulder Bolt, 5/16" x 1/2"	1
24	Z76153	Flange Bolt, 1/2NC x 1"	3
25	Z92203	Groove Pulley, 2" x 1/4"	1
26	Z92207	Green Nylon Rope, 1/4" x 15ft	1
27	7017W708	Engagement Lever	1
28	7017W719	Weldment, Engagement Ratchet	1

Beater Bar Assembly



Item No.	Part No.	Description	Qty
1	7017L733	Bottom Beater, Paddle	10
2	7017M702	Coupler, Beater Gear Box	1
3	7017W702	Bottom Beater	1
4	7017W713	Beater Cap	1
5	7017W714	Beater Cap RH	1
6	Z25212	4-Bolt Flange Bearing, UCF207-20R3BO x Triple Seal	1
7	Z76137	Flange Bolt, 3/8NC x 1-1/4"	30
8	Z71307	Hex Bolt, 3/8NC x 3/4"	4
9	Z71345	Hex Bolt, 3/8NC x 4-1/2"	1
10	Z71517	Hex Bolt, 1/2NC x 1-3/4"	4
11	Z72231	Hex Lock Nut, 3/8NC	1
12	Z72251	Hex Lock Nut, 1/2NC	4
13	Z72531	Serrated Flange Locknut, 3/8NC	34
14	Z74122	Set Screw, 5/16NF x 3/8"	2

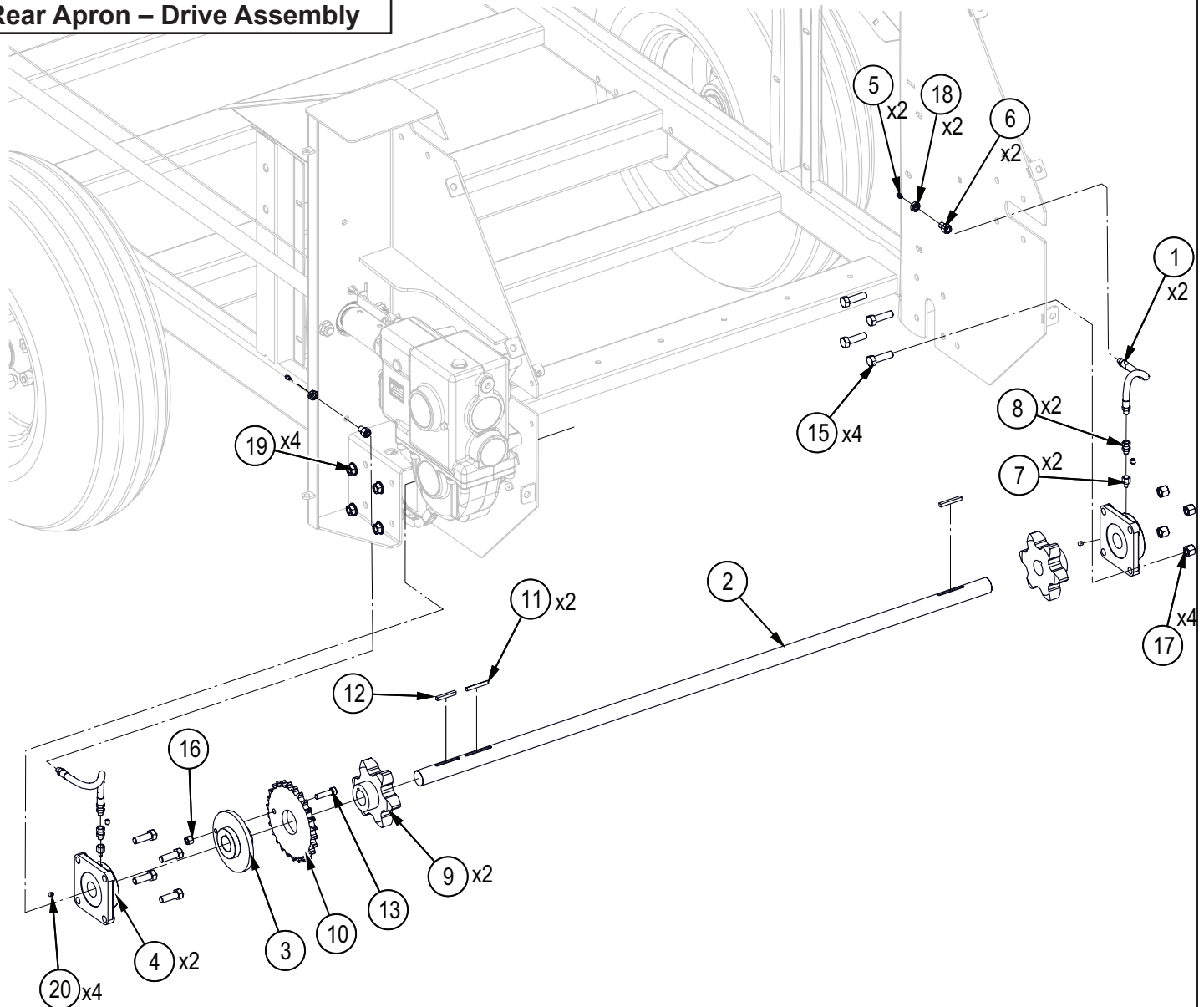
Beater Drive Rear Assembly



Line Shaft and Wire Cable Detail

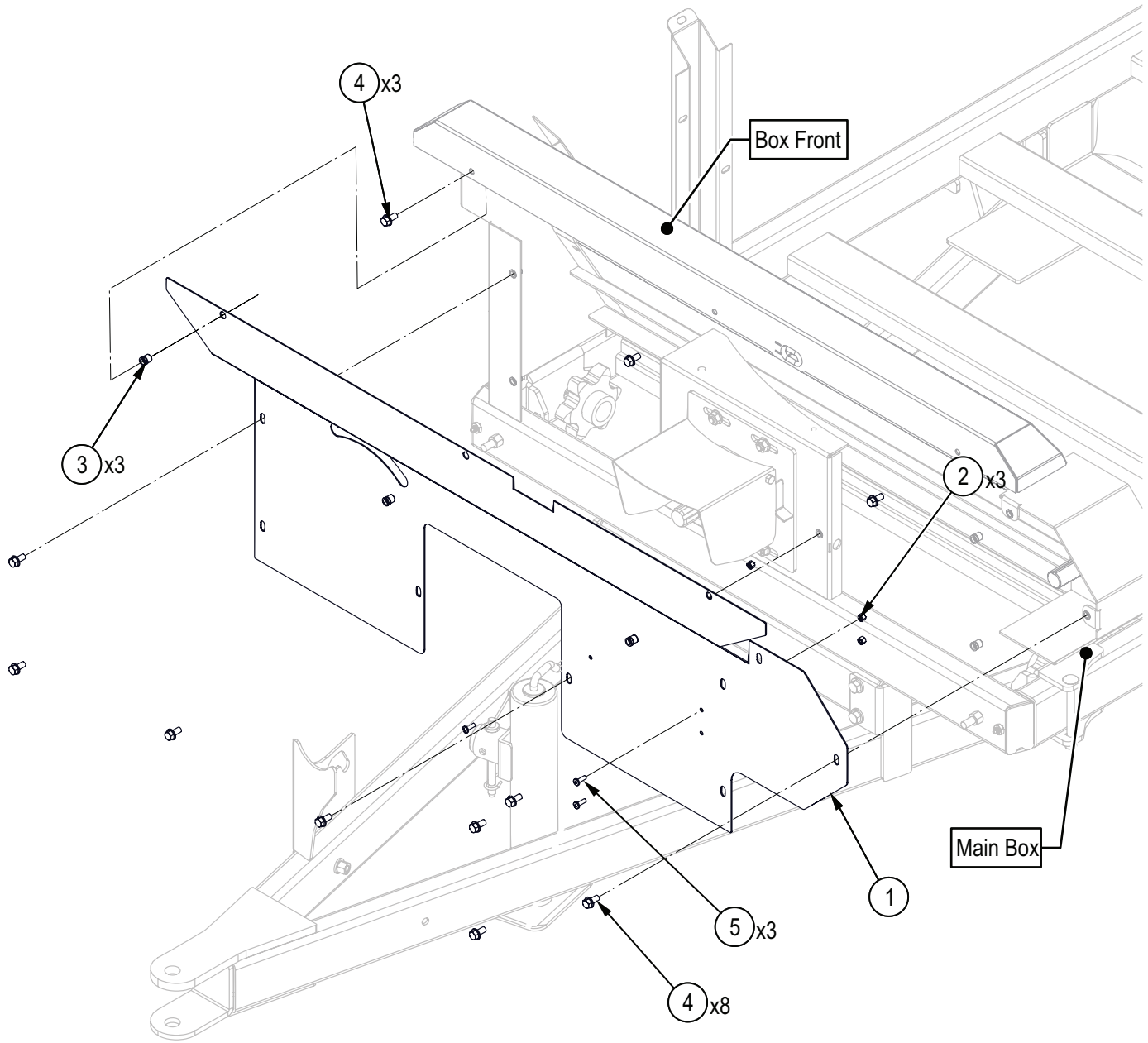
Item No.	Part No.	Description	Qty
1	7017L739	Link, Gear Box	1
2	7017M705	Line Shaft	1
3	7017S713	Wire Cable, 1/8" Shifting	1
4	Z25105	2-Bolt Flange Bearing, UCFL207-20	1
5	Z29202	Grease Fitting, 1/4NF	1
6	Z42153	Roller Chain, #60 x 27.5	1
7	Z42813	Sprocket, #60 x 15 x 1-3/8"	1
8	Z43104	Right Angle Gearbox, 55HP x 470RPM	1
9	Z46438	Rigid Coupling, 1-1/4" x 1-1/4"	1
10	Z46543	Key, 5/16" x 5/16" x 1-1/2"	2
11	Z46553	Key, 3/8" x 3/8" x 1"	2
12	Z71112	Hex Bolt, 1/4NC x 1-1/4"	1
13	Z71615	Hex Bolt, 5/8NC x 1-1/2"	2
14	Z72211	Hex Lock Nut, 1/4NC	1
15	Z72521	Serrated Flange Locknut, 5/16NC	2
16	Z72561	Serrated Flange Locknut, 5/8NC	2
17	Z74122	Set Screw, 5/16NF x 3/8"	4
18	Z74131	Set Screw, 3/8NC x 3/8"	2
19	Z77175	Hex Bolt, M12x1.75 x 25mm	4

Rear Apron – Drive Assembly



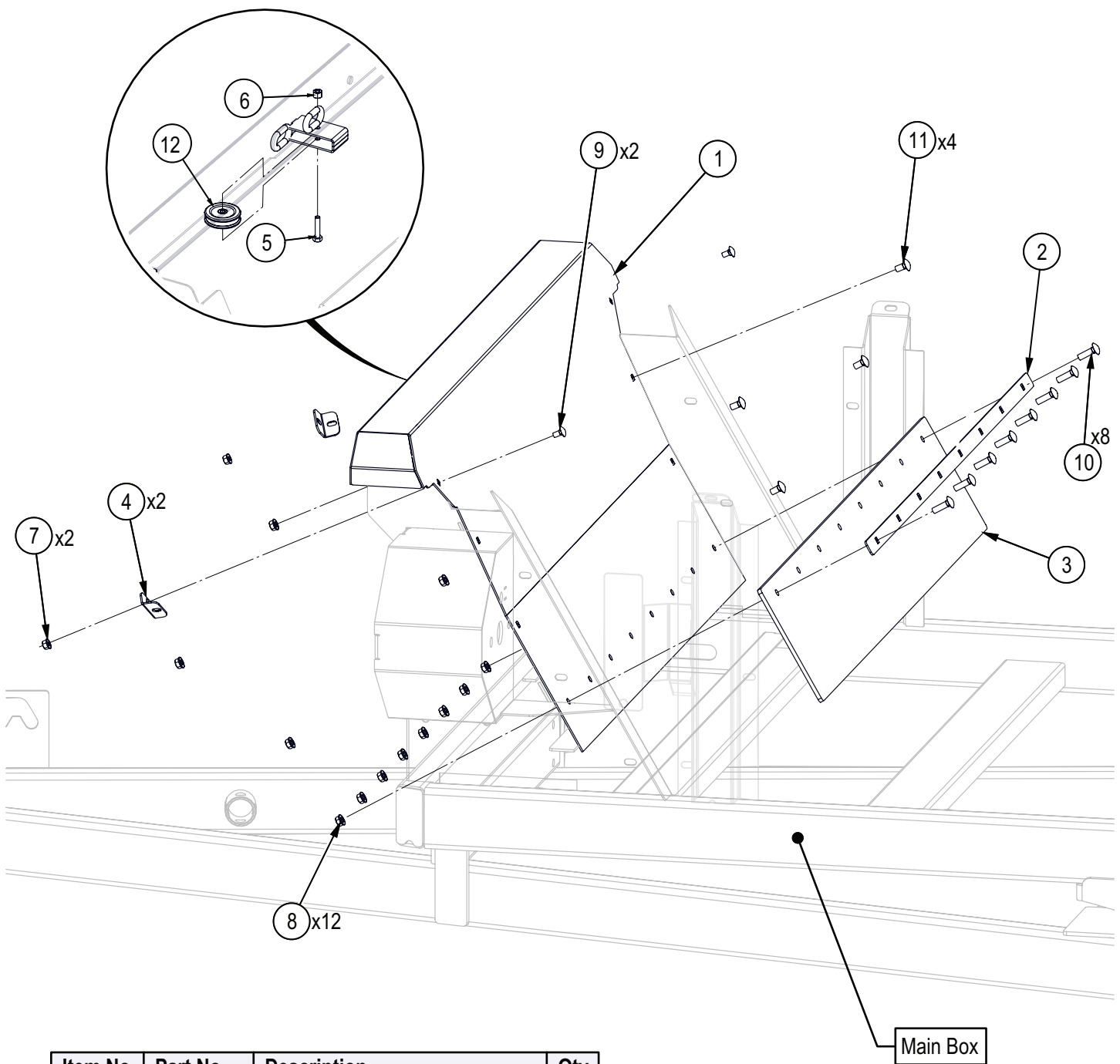
Item No.	Part No.	Description	Qty
1	7017F704	1/4" Grease Whip, MP02 x MP02 x 9"	2
2	7017M706	Shaft, Apron Rear	1
3	7017W704	Hub, Apron Drive	1
4	Z25212	4-Bolt Flange Bearing, UCF207-20R3BO x Triple Seal	2
5	Z29202	Grease Fitting, 1/4NF	2
6	Z29206	Bulkhead, FP x FP 0402 x 7/16NC	2
7	Z29303	Grease Fitting, FP02 x 1/4NF	2
8	Z29311	Grease Fitting, MP x FPX 0202	2
9	Z42812	Sprocket, #667 x 6 x 1-1/4" w/ Key	2
10	Z42814	Sprocket, #60 x 26 x 2"	1
11	Z46531	Key, 1/4" x 1/4" x 2"	2
12	Z46535	Key, 1/4" x 1/4" x 1-3/4"	1
13	Z71315G8	Hex Bolt, 3/8NC x 1-1/2" G8	1
15	Z71517	Hex Bolt, 1/2NC x 1-3/4"	4
16	Z72231G8	Hex Lock Nut, 3/8NC G8	1
17	Z72251	Hex Lock Nut, 1/2NC	4
18	Z72341	Jam Nut, 7/16NC	2
19	Z72551	Serrated Flange Locknut, 1/2NC	4
20	Z74122	Set Screw, 5/16NF x 3/8"	3

Front Shield Assembly



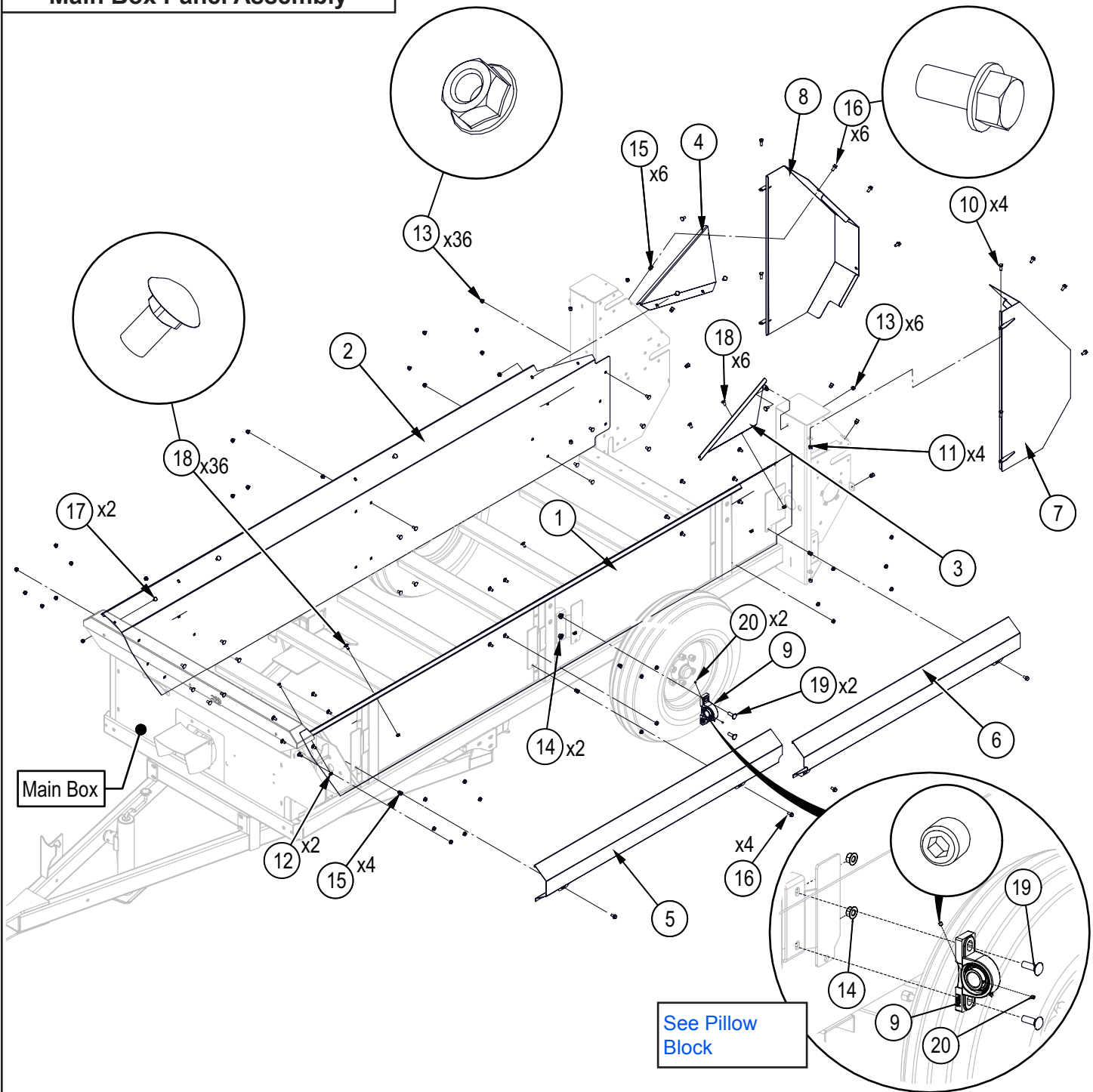
Item No.	Part No.	Description	Qty
1	7017L718	Shield, Front	1
2	Z72211	Hex Lock Nut, 1/4NC	3
3	Z72958	Rivet Nut, 3/8NC x 150	3
4	Z76133	Flange Bolt, 3/8NC x 3/4"	11
5	Z78301	Machine Screw, 1/4NC x 3/4"	3

Front Box and Apron Flap



Item No.	Part No.	Description	Qty
1	7017W707	Box Front	1
2	7017L776	Plate, Flap Keeper	1
3	7017S711	Material Stop Flap	1
4	7017L786	Corner Brace	2
5	Z71112	Hex Bolt, 1/4NC x 1-1/4"	1
6	Z72211	Hex Lock Nut, 1/4NC	1
7	Z72521	Serrated Flange Locknut, 5/16NC	2
8	Z72531	Serrated Flange Locknut, 3/8NC	12
9	Z76222	Carriage Bolt, 5/16NC x 5/8"	2
10	Z76232	Carriage Bolt, 3/8NC x 1-1/4"	8
11	Z76233	Carriage Bolt, 3/8NC x 3/4"	4
12	Z92203	Groove Pulley, 2" x 1/4"	1

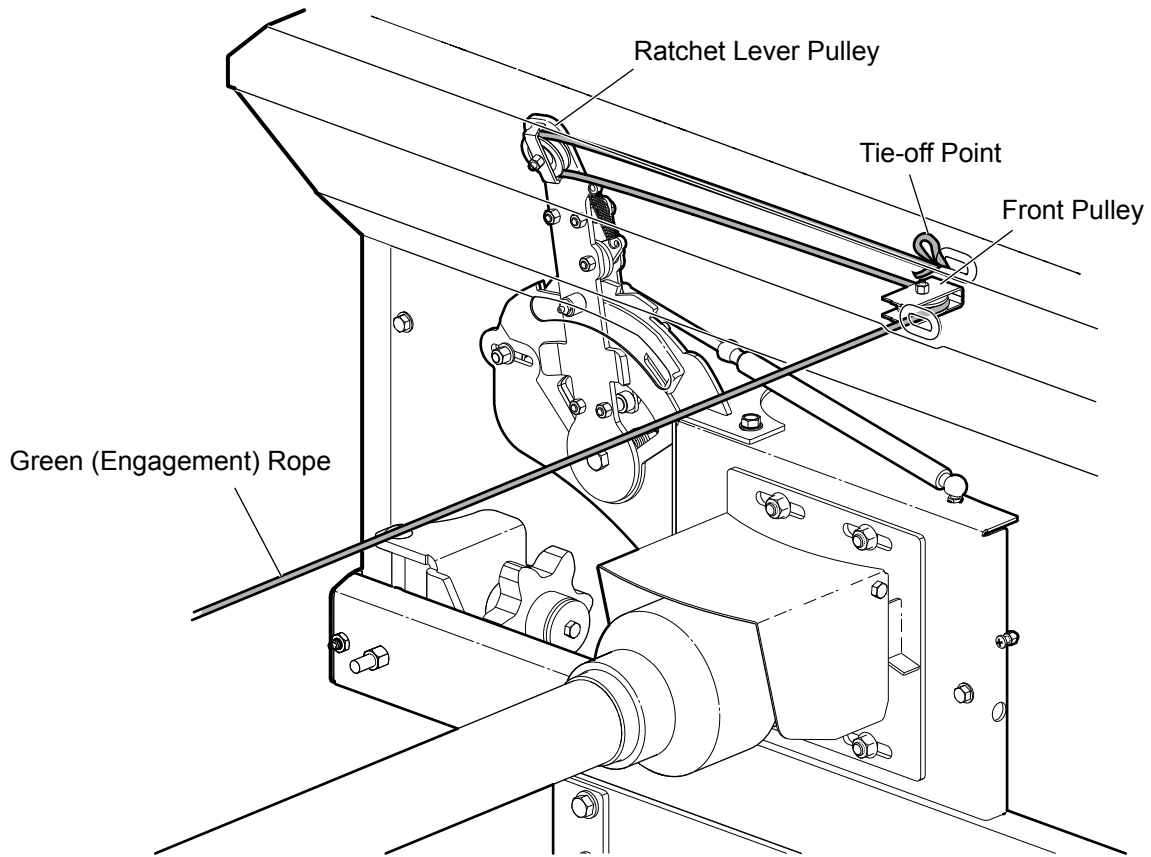
Main Box Panel Assembly



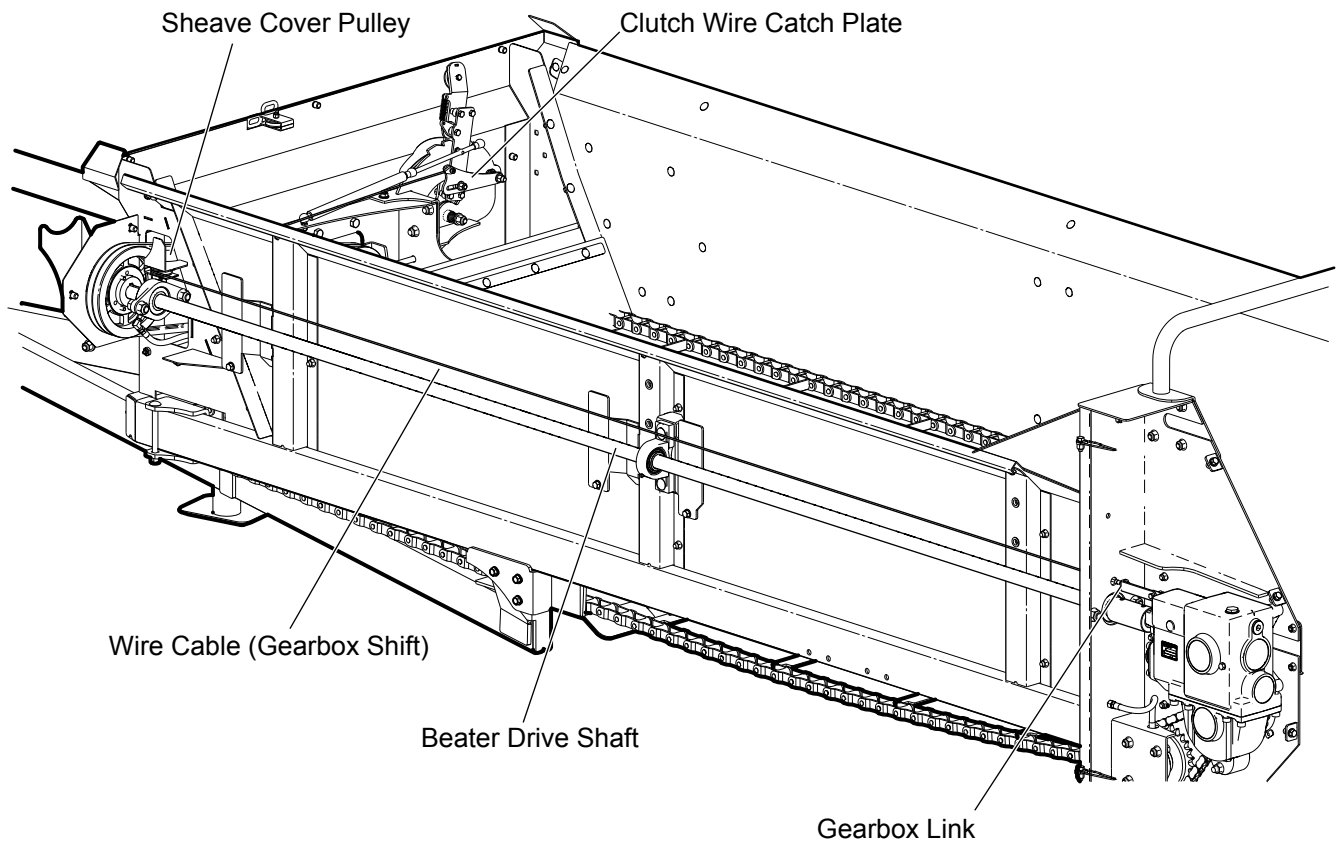
Item No.	Part No.	Description	Qty
1	7017L716	Side, LH	1
2	7017L716H	Side, RH	1
3	7017L717	Material Guide LH	1
4	7017L717H	Material Guide RH	1
5	7017L730	Shield, Side Shaft - Front	1
6	7017L731	Shield, Side Shaft - Back	1
7	7017W705	Beater Door -LH	1
8	7017W717	Beater Door-RH	1
9	Z24102	Pillow Block, UCP206-20	1
10	Z71310	Hex Bolt, 3/8NC x 1"	4

Item No.	Part No.	Description	Qty
11	Z72231	Hex Lock Nut, 3/8NC	4
12	Z72521	Serrated Flange Locknut, 5/16NC	2
13	Z72531	Serrated Flange Locknut, 3/8NC	42
14	Z72551	Serrated Flange Locknut, 1/2NC	2
15	Z72959	Rivet Nut, 3/8NC x 312	10
16	Z76133	Flange Bolt, 3/8NC x 3/4"	10
17	Z76222	Carriage Bolt, 5/16NC x 5/8"	2
18	Z76233	Carriage Bolt, 3/8NC x 3/4"	42
19	Z76251	Carriage Bolt, 1/2NC x 1-1/2"	2
20	Z74112	Set Screw, 1/4NF x 1/4"	2

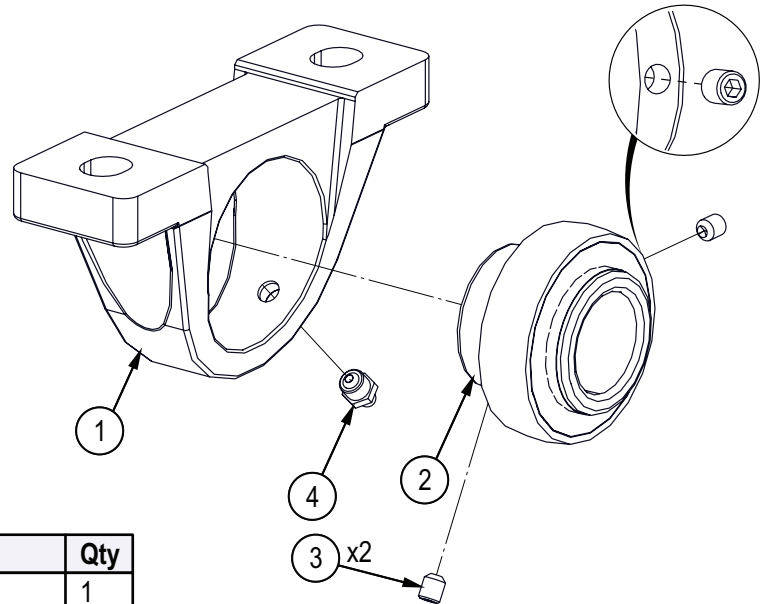
Rope Routing – Engagement Lever



Cable Routing – Beater Gearbox



Pillow Block

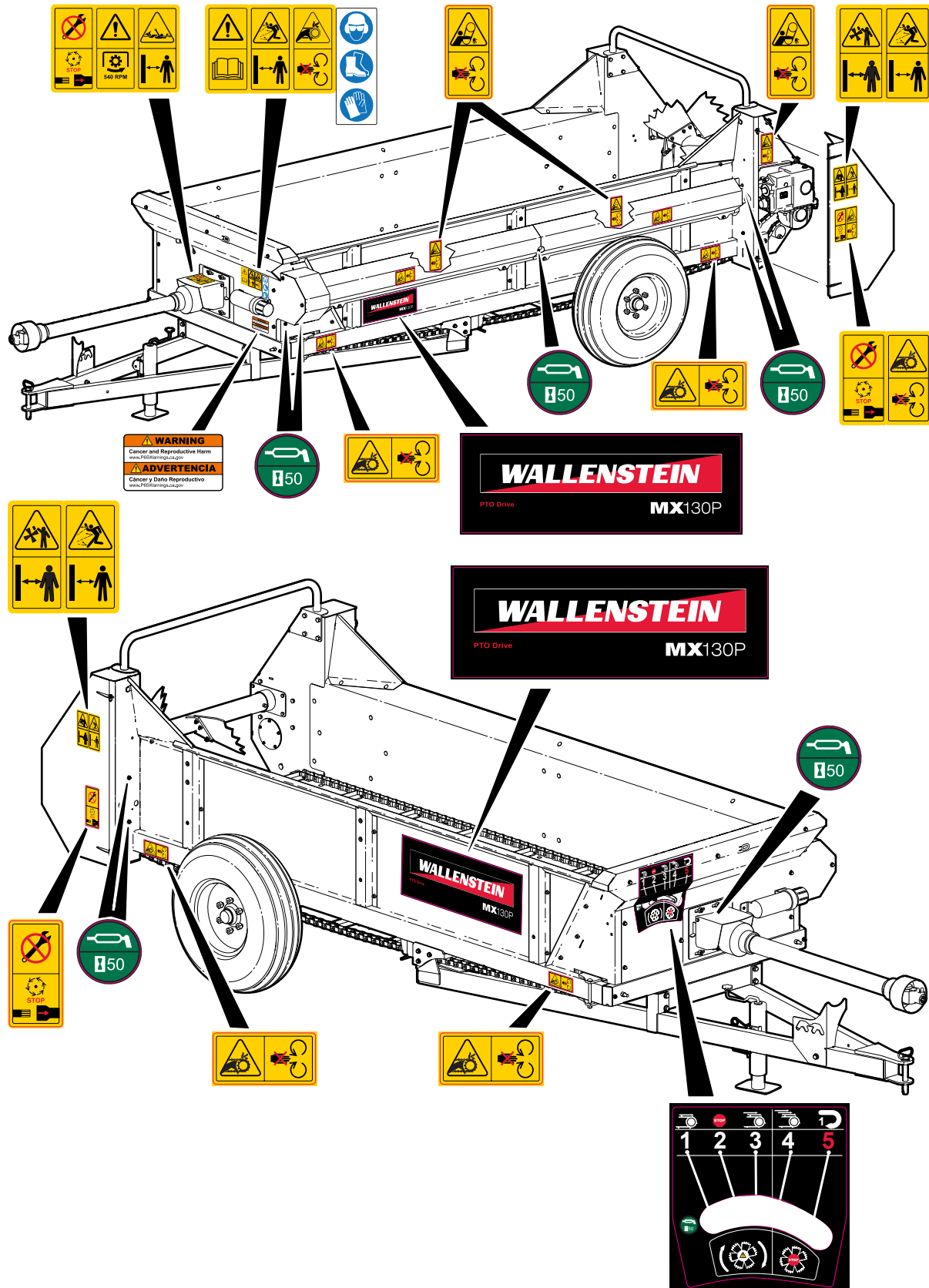


Item No.	Part No.	Description	Qty
1	Z24101-1	Housing, P208 for Z24101	1
2	Z24101-2	Bearing Insert, UC208-24 for Z24101	1
3	Z74122	Set Screw, 5/16NF x 3/8"	2
4	Z29201	Grease Fitting, MP02	1

Decal Layout

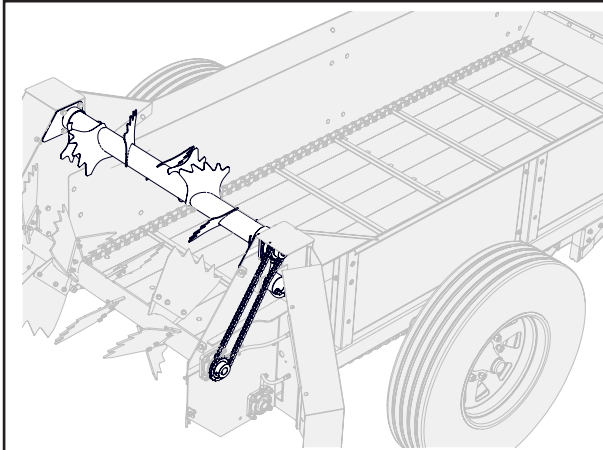
IMPORTANT! If parts are replaced that have safety signs on them, new signs must be applied. Safety signs must always be replaced if they become damaged, are removed, or become illegible.

Safety signs are included in the product decal kit available from your authorized dealer. Decals are not available separately.



Accessories

Call your dealer for pricing and availability



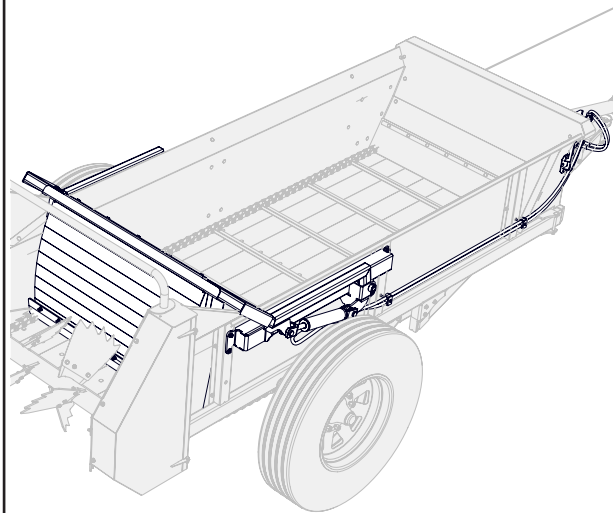
#M7640 UPPER BEATER

The optional Upper Beater helps to break up the manure even more and improves overall shredding action.

Kit consists of upper beater bar, drive chain, sheave and hardware.

Must be dealer installed.

Shown mounted.



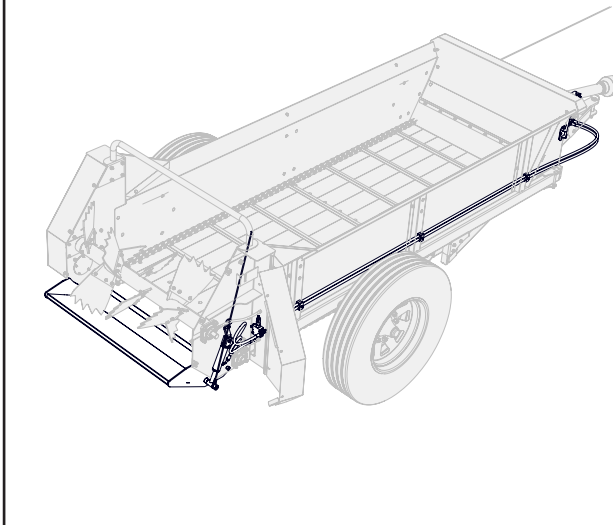
#M7630 HYDRAULIC END GATE

The optional endgate is the ultimate way to control delivery. Close the endgate to eliminate spills during filling or on the way from stable to pasture.

Kit consists of end gate, hardware, hydraulic cylinder, hoses and components.

Must be dealer installed.

Shown mounted.



#M7620 FINES PAN

A must have add on kit, the hydraulically controlled Fines Pan provides a more consistent spread of manure by causing all manure to be discharged by the beater paddles.

Kit consists of fines pan, hardware, hydraulic cylinder, hoses and components.

Must be dealer installed.

Shown mounted.


Common Bolt Torque Values

Checking Bolt Torque

The tables shown give correct torque values for various bolts and capscrews. Tighten all bolts to the torque values specified in the table, unless indicated otherwise. Check tightness of bolts periodically.

IMPORTANT! If replacing hardware, use fasteners of the same grade.

IMPORTANT! Torque figures indicated in the table are for non-greased or non-oiled threads. Do not grease or oil threads unless indicated otherwise. When using a thread locker, increase torque values by 5%.

 **NOTE:** Bolt grades are identified by their head markings.

Imperial Bolt Torque Specifications

Bolt Diameter	Torque Value					
	SAE Gr. 2		SAE Gr. 5		SAE Gr. 8	
	lbf•ft	N•m	lbf•ft	N•m	lbf•ft	N•m
1/4"	6	8	9	12	12	17
5/16"	10	13	19	25	27	36
3/8"	20	27	33	45	45	63
7/16"	30	41	53	72	75	100
1/2"	45	61	80	110	115	155
9/16"	60	95	115	155	165	220
5/8"	95	128	160	215	220	305
3/4"	165	225	290	390	400	540
7/8"	170	230	420	570	650	880
1"	225	345	630	850	970	1320



SAE Gr. 2



SAE Gr. 5



SAE Gr. 8

Metric Bolt Torque Specifications

Bolt Diameter	Torque Value			
	Gr. 8.8		Gr. 10.9	
	lbf•ft	N•m	lbf•ft	N•m
M3	0.4	0.5	1.3	1.8
M4	2.2	3	3.3	4.5
M6	7	10	11	15
M8	18	25	26	35
M10	37	50	52	70
M12	66	90	92	125
M16	166	225	229	310
M20	321	435	450	610
M30	1,103	1 495	1,550	2 100
M36	1,917	2 600	2,700	3 675



8.8



10.9

Hydraulic Fitting Torque Values

Tightening Flare Type Tube Fittings

1. Check flare and flare seat for defects that might cause leakage.
2. Align tube with fitting before tightening.
3. Hand-tighten swivel nut until snug.
4. To prevent twisting the tube, use two wrenches. Place one wrench on the connector body and tighten the swivel nut with the second. Torque to values shown.

If a torque wrench is not available, use the FFFT (Flats From Finger Tight) method.

Hydraulic Fitting Torque					
Tube Size OD	Hex Size Across Flats	Torque value		Flats From Finger Tight	
		lbf·ft	N·m	Flats	Turns
3/16	7/16	6	8	2	1/6
1/4	9/16	11–12	15–17	2	1/6
5/16	5/8	14–16	19–22	2	1/6
3/8	11/16	20–22	27–30	1-1/4	1/6
1/2	7/8	44–48	59–65	1	1/6
5/8	1	50–58	68–79	1	1/6
3/4	1-1/4	79–88	107–119	1	1/8
1	1-5/8	117–125	158–170	1	1/8

Values shown are for non-lubricated connections.

Wheel Lug Torque Values

It is extremely important safety procedure to apply and maintain proper wheel mounting torque on your trailer axle. Torque wrenches are the best method to assure the proper amount of torque is being applied to a fastener.

Wheel lugs should be torqued before first road use and after each wheel removal. Check and re torque after the first 10 miles (16 km), 25 miles (40 km), and again at 50 miles (80 km). Check periodically thereafter.



WARNING!

Wheel lug nuts must be installed and kept at the proper torque value to prevent loose wheels, broken studs, or possible separation of wheels from axle.

- Start all lug nuts onto the threads by hand.
- Tighten lug nuts in stages, following the pattern shown in the Wheel Lug Nut Torque table.

Wheel Lug Nut Torque				
Wheel Size	Units	1st Stage	2nd Stage	3rd Stage
8"	lbf·ft	12–20	30–35	45–55
	N·m	16–26	39–45.5	58.5–71.5
12"	lbf·ft	20–25	35–40	50–60
	N·m	26–32.5	45.5–52	65–78
13"	lbf·ft	20–25	35–40	50–60
	N·m	26–32.5	45.5–52	65–78
14"	lbf·ft	20–25	50–60	90–120
	N·m	26–32.5	65–78	117–156
15"	lbf·ft	20–25	50–60	90–120
	N·m	26–32.5	65–78	117–156
16"	lbf·ft	20–25	50–60	90–120
	N·m	26–32.5	65–78	117–156

Wheel Lug Torque Pattern

