



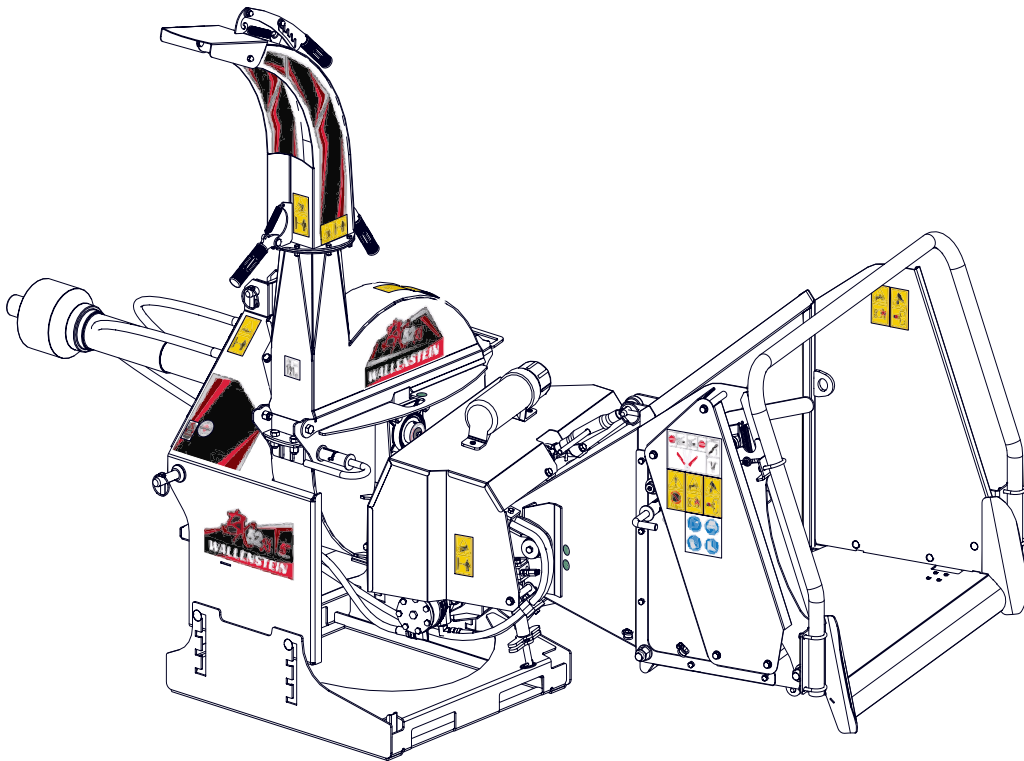
EMB Manufacturing Inc.
4144 Boomer Line • St. Clements, Ontario • N0B 2M0 • Canada
www.wallensteinequipment.com

PARTS MANUAL

BX52REU and BX52RIEU

3PH Roller Feed Chipper

Serial Number 152R559 & up



Foreword

EMB Manufacturing has prepared this parts manual to assist customers in ordering quality OEM replacement parts.

Regular maintenance, and replacing old, worn or broken parts with the correct OEM parts, is essential in prolonging the life of your EMB product. Please refer to this manual to identify replacement parts.

To order parts, contact your Wallenstein dealer or distributor. Have the product model and serial number handy.

If your dealer is no longer available, please go to our website: <http://www.wallensteinequipment.com> and click on the [Dealer Locator](#) to find the nearest dealer.

All information contained in this parts manual is current as per the revision date at the bottom of the page. EMB reserves the right to change product specifications at any time without notice.

If your product specifications differ from those contained in this manual, contact EMB Manufacturing for information.

Reproduction of this parts manual of any kind is prohibited without prior written permission from EMB Manufacturing.



WARNING!

Refer to the operators manual for safe operation and maintenance.

Maintenance should be performed by trained personnel only.

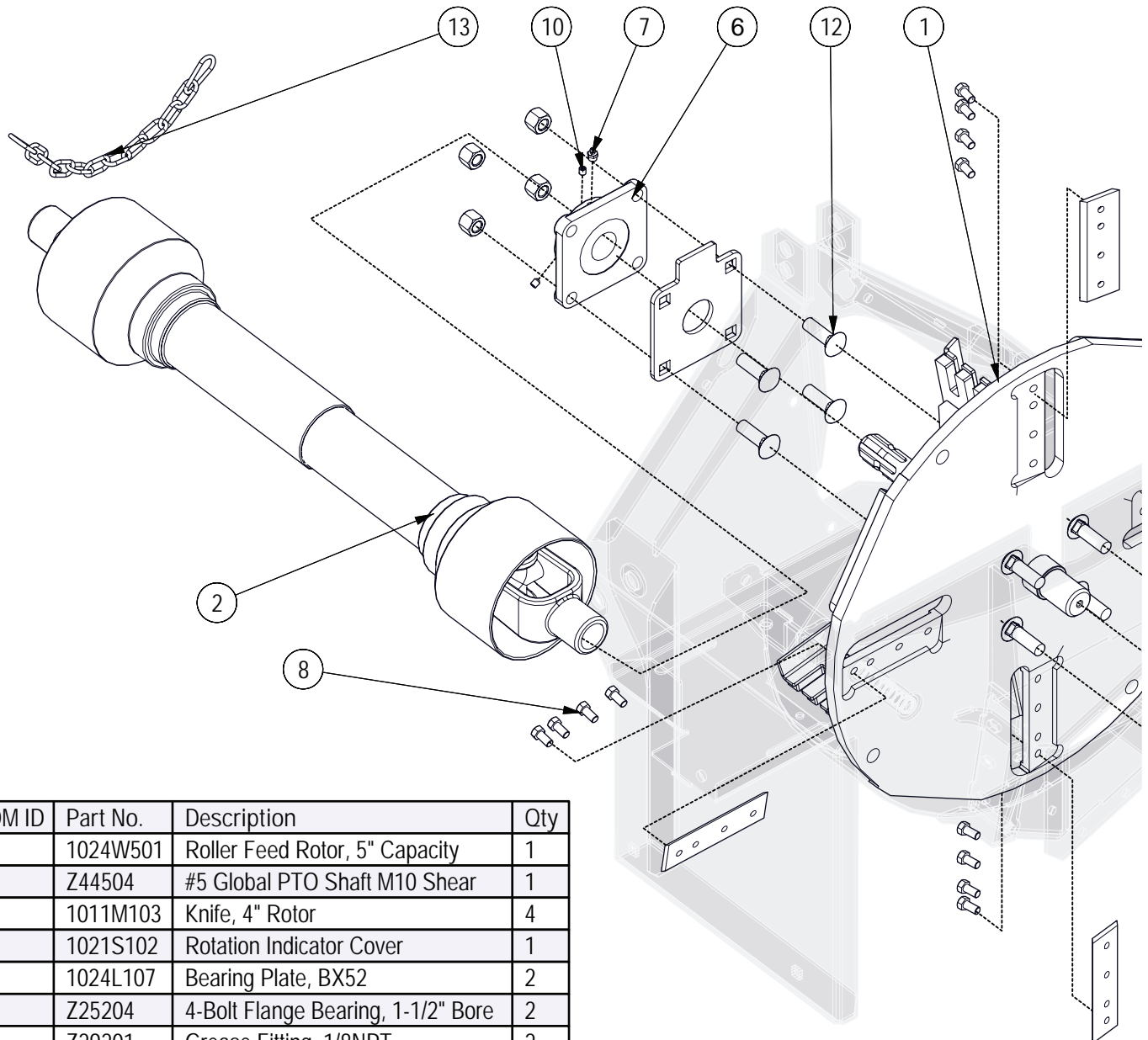
BX52 Variation Chart

| BX Option Cross Reference | | | Option | | | |
|---------------------------|----------|--------|-----------|-------------|-------------|----------------|
| | | | Self Feed | Roller Feed | Intellifeed | Revision Level |
| Model | BX52SEU | BX52S | x | | | # |
| | BX52REU | BX52R | | x | | # |
| | BX52RIEU | BX52RI | | x | x | # |

Contents

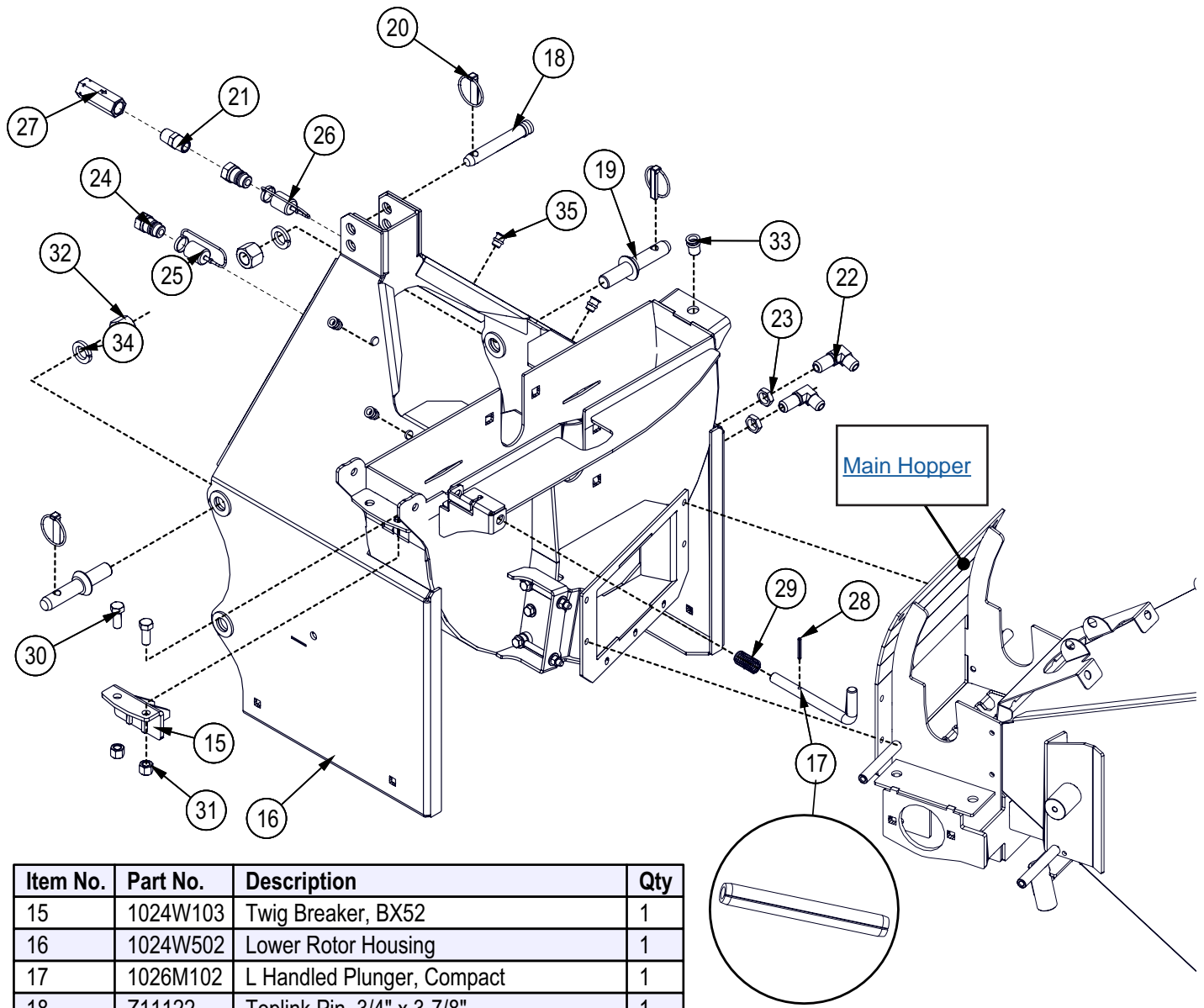
| | |
|--|-----------|
| BX52 Variation Chart | 2 |
| Rotor Assembly..... | 4 |
| Lower Rotor Housing | 5 |
| Ledger Knife Detail | 6 |
| Upper Rotor Housing..... | 7 |
| Discharge Chute | 8 |
| Upper Roller Detail..... | 9 |
| Right Upper Roller Pivot Assembly..... | 10 |
| Left Upper Roller Pivot Assembly | 11 |
| Lower Roller Assembly | 12 |
| Main Hopper Assembly | 13 |
| Feed Table Assembly..... | 14 |
| Roller Valve Detail..... | 15 |
| Feed Roller Control Detail..... | 15 |
| Intellifeed Roller Control Components | 16 |
| Intellifeed Components | 17 |
| PTO Shaft #Z44504 | 18 |
| Intellifeed Wiring Diagram #Z62109 | 19 |
| Hydraulic Hose Parts List | 20 |
| Hydraulic Plumbing Diagram BX52REU | 21 |
| Hydraulic Plumbing Diagram BX52RI | 21 |
| Decal Layout - Left Side View | 22 |
| Decal Layout - Right Side View | 23 |
| Accessories..... | 24 |
| Bolt Torque | 25 |
| Hydraulic Fitting Torque..... | 26 |

Rotor Assembly



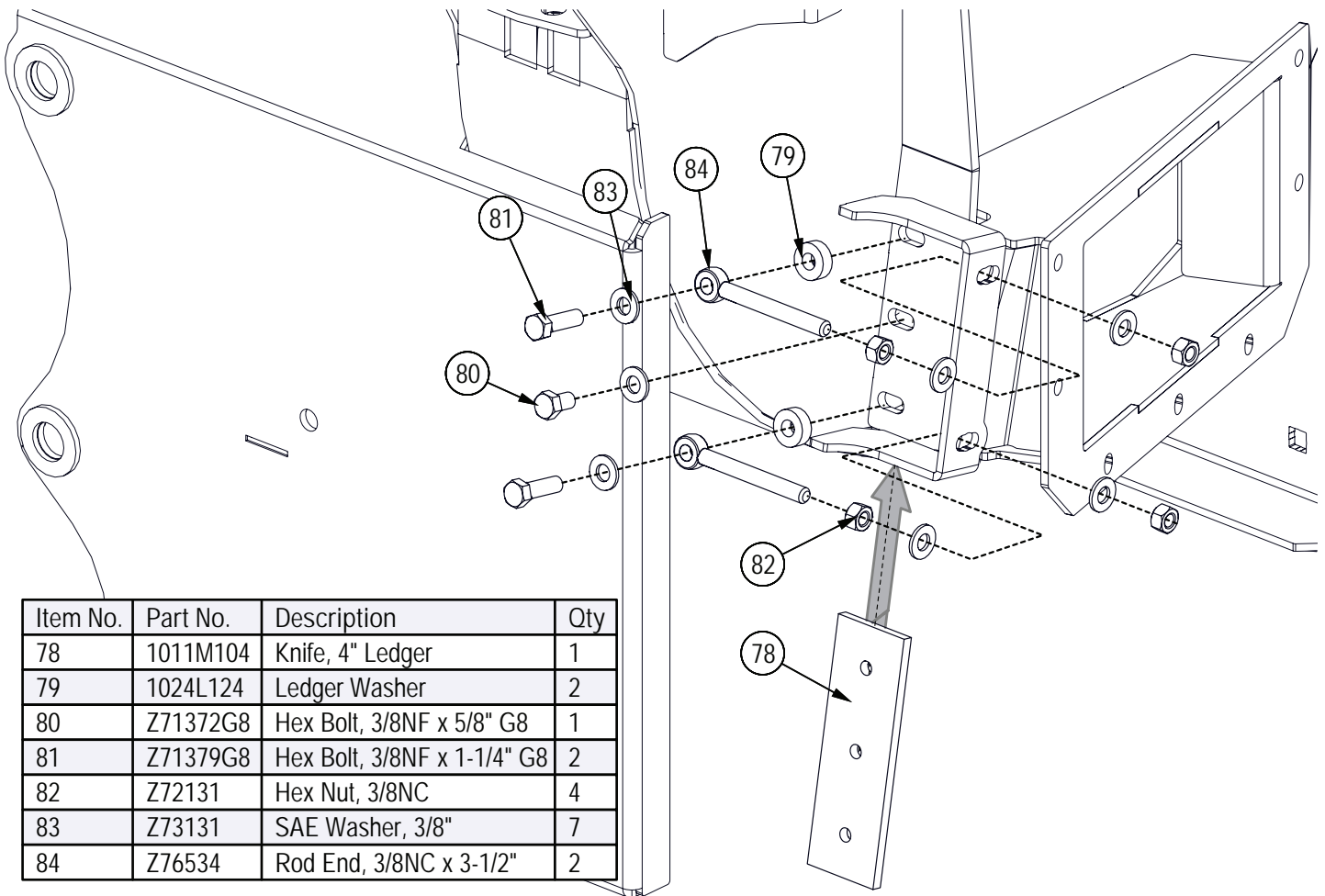
| BOM ID | Part No. | Description | Qty |
|--------|----------|------------------------------------|-----|
| 1 | 1024W501 | Roller Feed Rotor, 5" Capacity | 1 |
| 2 | Z44504 | #5 Global PTO Shaft M10 Shear | 1 |
| 3 | 1011M103 | Knife, 4" Rotor | 4 |
| 4 | 1021S102 | Rotation Indicator Cover | 1 |
| 5 | 1024L107 | Bearing Plate, BX52 | 2 |
| 6 | Z25204 | 4-Bolt Flange Bearing, 1-1/2" Bore | 2 |
| 7 | Z29201 | Grease Fitting, 1/8NPT | 2 |
| 8 | Z71373G8 | Hex Bolt, 3/8NF x 3/4 G8 | 16 |
| 9 | Z72261G8 | Hex Lock Nut, 5/8NC G8 | 8 |
| 10 | Z74122 | Set Screw, 5/16NF x 3/8" | 4 |
| 11 | Z75351 | BHCS, 5/16NF x 3/4" | 1 |
| 12 | Z76261G8 | Carriage Bolt, 5/8NC x 2" G8 | 8 |
| 13 | Z92310 | Chain 3/16" x 12" double hook ends | 1 |
| 14 | Z94208 | Clockwise Rotation Label | 1 |

Lower Rotor Housing



| Item No. | Part No. | Description | Qty |
|----------|----------|--|-----|
| 15 | 1024W103 | Twig Breaker, BX52 | 1 |
| 16 | 1024W502 | Lower Rotor Housing | 1 |
| 17 | 1026M102 | L Handled Plunger, Compact | 1 |
| 18 | Z11122 | Toplink Pin, 3/4" x 3-7/8" | 1 |
| 19 | Z11431 | Implement Pin, 7/8" x 1-3/4" x 7/8NF | 2 |
| 20 | Z12140 | Lynch Pin, 7/16" | 3 |
| 21 | Z51122 | Straight, MP x MP 0808 | 1 |
| 22 | Z51492 | Elbow 90, MJIC x BH 0808 | 2 |
| 23 | Z51493 | BH Locknut, 08 | 2 |
| 24 | Z51926 | Quick Coupler, FP08 x M ISO 7241-1 | 2 |
| 25 | Z52831 | Nipple Cap, ISO 7241-1 x Red | 1 |
| 26 | Z52832 | Nipple Cap, ISO 7241-1 x Black | 1 |
| 27 | Z56102 | Check Valve, FP08 x 0PSI | 1 |
| 28 | Z14151 | Roll Pin, 3/16" x 1-1/2" | 1 |
| 29 | Z32305 | Comp Spring, 0.845" OD x 3-1/2" x 0.085" | 1 |
| 30 | Z71512 | Hex Bolt, 1/2NC x 1-1/4" | 2 |
| 31 | Z72251 | Hex Lock Nut, 1/2NC | 2 |
| 32 | Z72282 | Hex Lock Nut, 7/8NF | 2 |
| 33 | Z72960 | Rivet Nut, 1/2NC x 200 | 1 |
| 34 | Z73381 | Split Lock Washer, 7/8" | 2 |
| 35 | Z77940 | Rivet Nut, M10x1.5 x 313 | 4 |

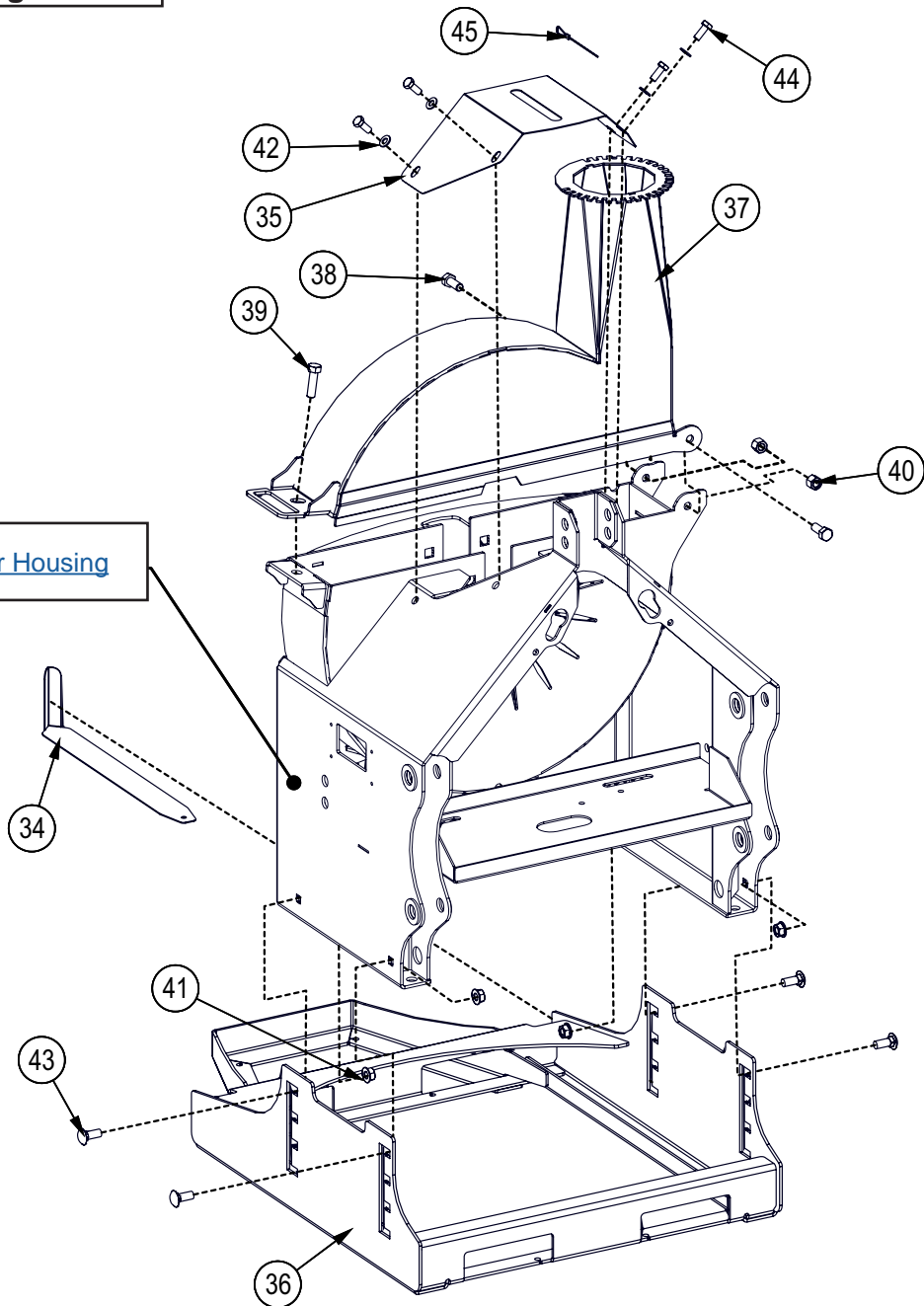
Ledger Knife Detail



| Item No. | Part No. | Description | Qty |
|----------|----------|-----------------------------|-----|
| 78 | 1011M104 | Knife, 4" Ledger | 1 |
| 79 | 1024L124 | Ledger Washer | 2 |
| 80 | Z71372G8 | Hex Bolt, 3/8NF x 5/8" G8 | 1 |
| 81 | Z71379G8 | Hex Bolt, 3/8NF x 1-1/4" G8 | 2 |
| 82 | Z72131 | Hex Nut, 3/8NC | 4 |
| 83 | Z73131 | SAE Washer, 3/8" | 7 |
| 84 | Z76534 | Rod End, 3/8NC x 3-1/2" | 2 |

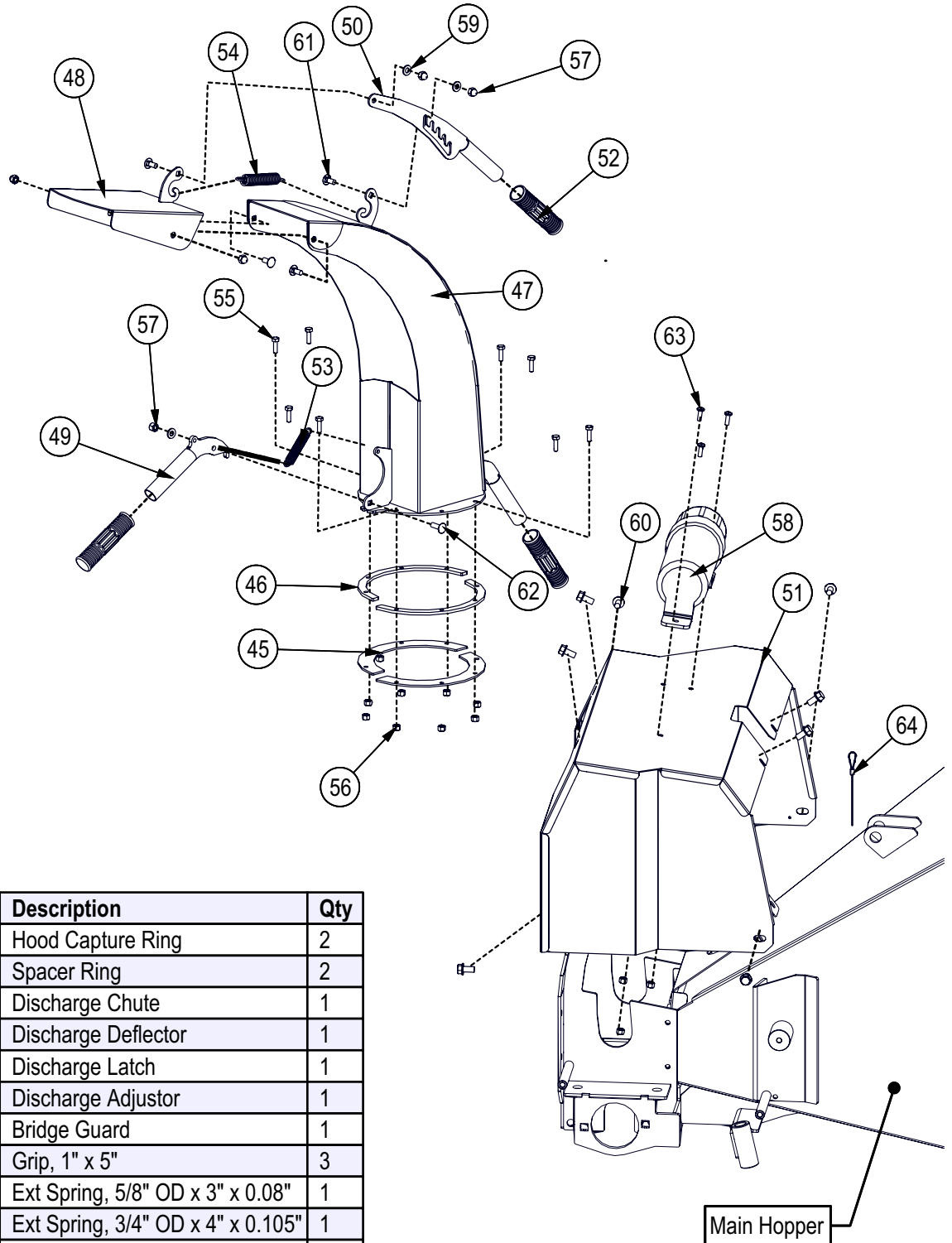
Upper Rotor Housing

Lower Rotor Housing



| Item No. | Part No. | Description | Qty |
|----------|----------|--------------------------------|-----|
| 34 | 1024L161 | Gauge, Ledger Setting | 1 |
| 35 | 1024L554 | PTO Guard | 1 |
| 36 | 1024W709 | BX52R Extended Base | 1 |
| 37 | 1024W104 | Upper Rotor Housing | 1 |
| 38 | Z71512 | Hex Bolt, 1/2NC x 1-1/4" | 2 |
| 39 | Z76155 | Flange Bolt, 1/2NC x 1-3/4" | 1 |
| 40 | Z72251 | Hex Lock Nut, 1/2NC | 2 |
| 41 | Z72551 | Serrated Flange Locknut, 1/2NC | 4 |
| 42 | Z73131 | SAE Washer, 3/8" | 4 |
| 43 | Z76259 | Carriage Bolt, 1/2NC x 1-1/4" | 4 |
| 44 | Z77162 | Hex Bolt, M10x1.5 x 25mm | 4 |
| 45 | Z92127 | 1/16 Aircraft cable x 16" | 1 |

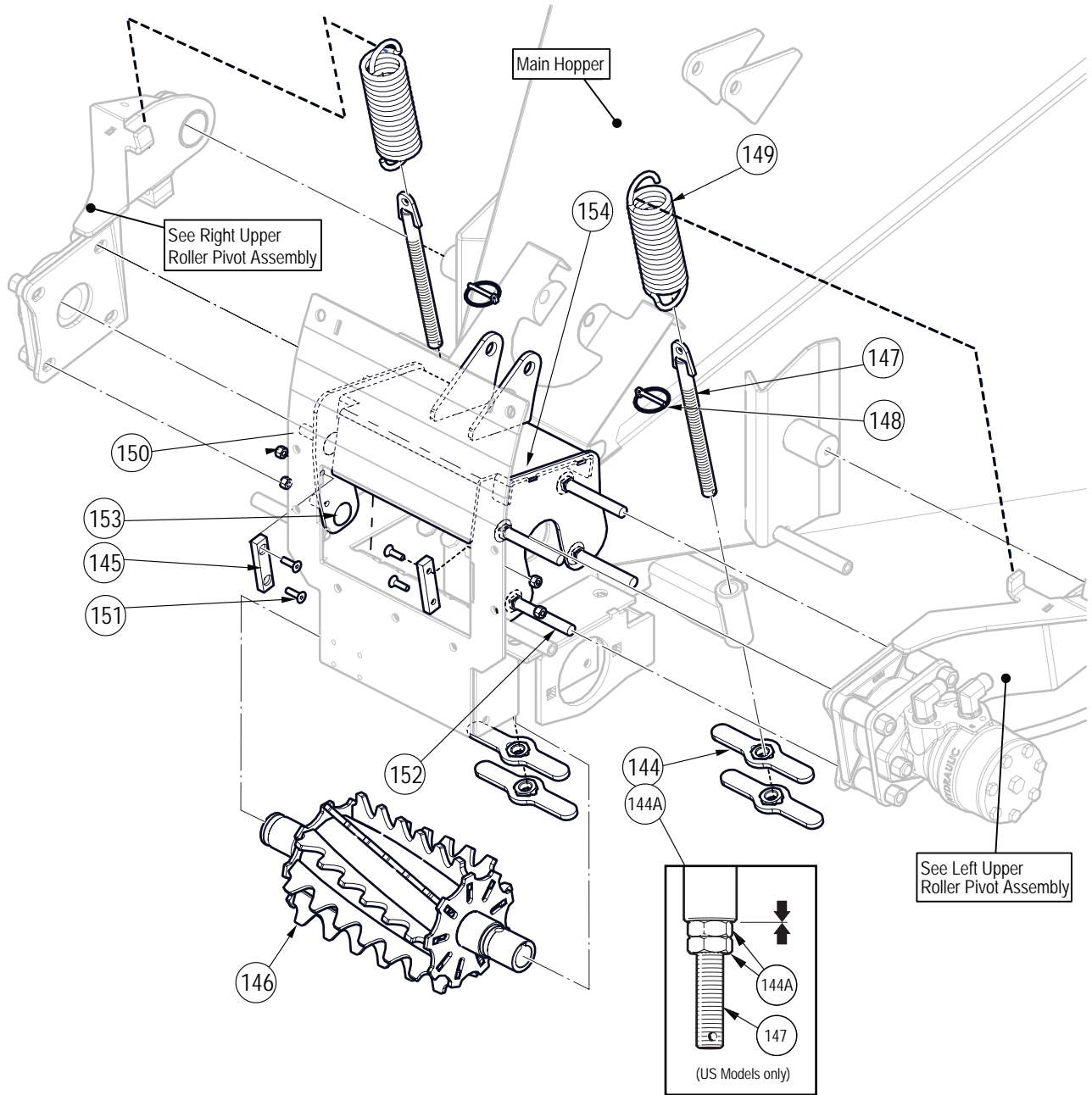
Discharge Chute



| Item No. | Part No. | Description | Qty |
|----------|----------|-----------------------------------|-----|
| 45 | 1024L133 | Hood Capture Ring | 2 |
| 46 | 1024L134 | Spacer Ring | 2 |
| 47 | 1024W106 | Discharge Chute | 1 |
| 48 | 1024W107 | Discharge Deflector | 1 |
| 49 | 1024W108 | Discharge Latch | 1 |
| 50 | 1024W109 | Discharge Adjustor | 1 |
| 51 | 1024W621 | Bridge Guard | 1 |
| 52 | Z19321 | Grip, 1" x 5" | 3 |
| 53 | Z31305 | Ext Spring, 5/8" OD x 3" x 0.08" | 1 |
| 54 | Z31401 | Ext Spring, 3/4" OD x 4" x 0.105" | 1 |
| 55 | Z71108 | Hex Bolt, 1/4NC x 7/8" | 8 |
| 56 | Z72211 | Hex Lock Nut, 1/4NC | 11 |
| 57 | Z72221 | Hex Lock Nut, 5/16NC | 5 |
| 58 | Z96503 | Manual Tube 3-1/2 Short | 1 |
| 59 | Z73122 | SAE Washer, 5/16" | 3 |
| 60 | Z76133 | Flange Bolt, 3/8NC x 3/4" | 8 |
| 61 | Z76221 | Carriage Bolt, 5/16NC x 3/4" | 4 |
| 62 | Z76225 | Carriage Bolt, 5/16NC x 1" | 1 |
| 63 | Z78301 | Machine Screw, 1/4NC x 3/4" | 3 |
| 64 | Z92110 | 1/16 Aircraft cable x 2' | 1 |

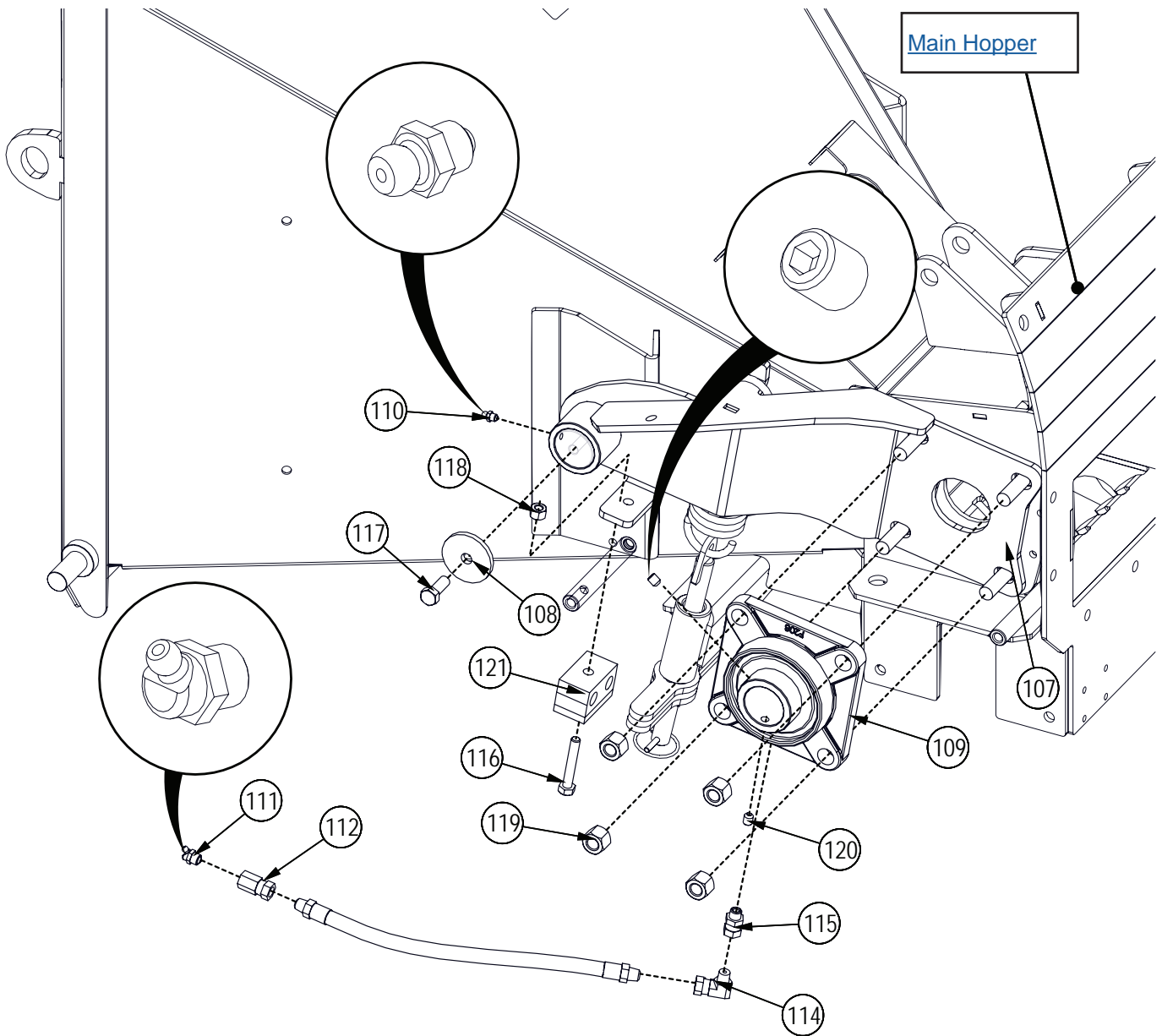
Main Hopper

Upper Roller Detail



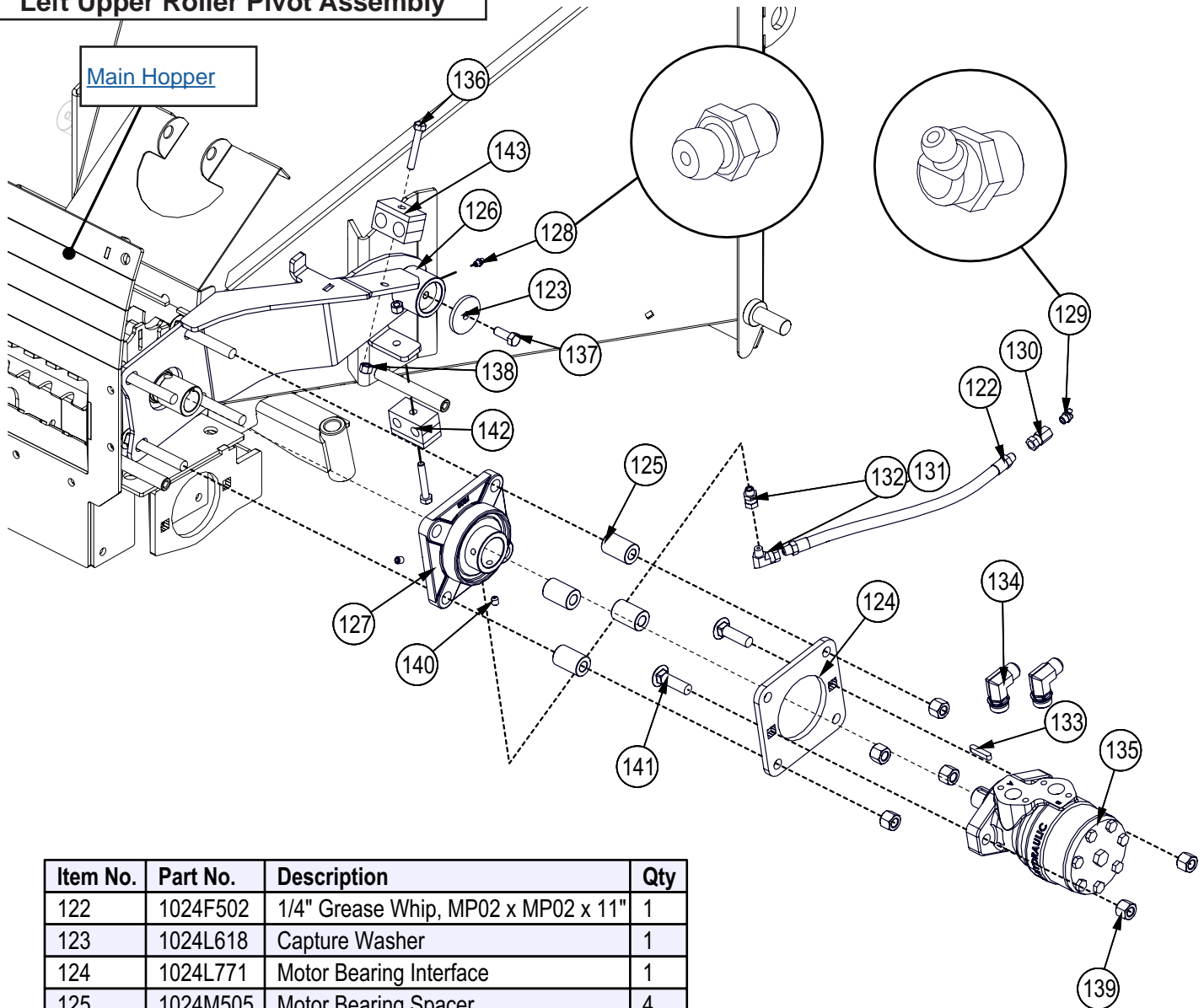
| Item No. | Part No. | Description | Qty |
|----------|----------|-----------------------------------|-----|
| 144 | 1022W220 | Nut Handle | 4 |
| 144A | Z72361 | Jam Nut, 5/8NC (US Models only) | 4 |
| 145 | 1024S707 | Rotor Hood Slide | 2 |
| 146 | 1024W710 | Upper Feed Roller, Spiral Overlap | 1 |
| 147 | 1024W708 | Spring Yoke | 2 |
| 148 | Z12110 | Lynch Pin, 3/16" | 2 |
| 149 | Z31501 | Ext Spring, 2" OD x 7" x 0.250" | 2 |
| 150 | Z72211 | Hex Lock Nut, 1/4NC | 4 |
| 151 | Z75211 | FHCS, 1/4NC x 7/8" | 4 |
| 152 | Z762510 | Carriage Bolt, 1/2NC x 3-1/2" | 4 |
| 153 | Z76258 | Carriage Bolt, 1/2NC x 1-3/4" | 4 |
| 154 | 1024W618 | Bridge | 1 |

Right Upper Roller Pivot Assembly



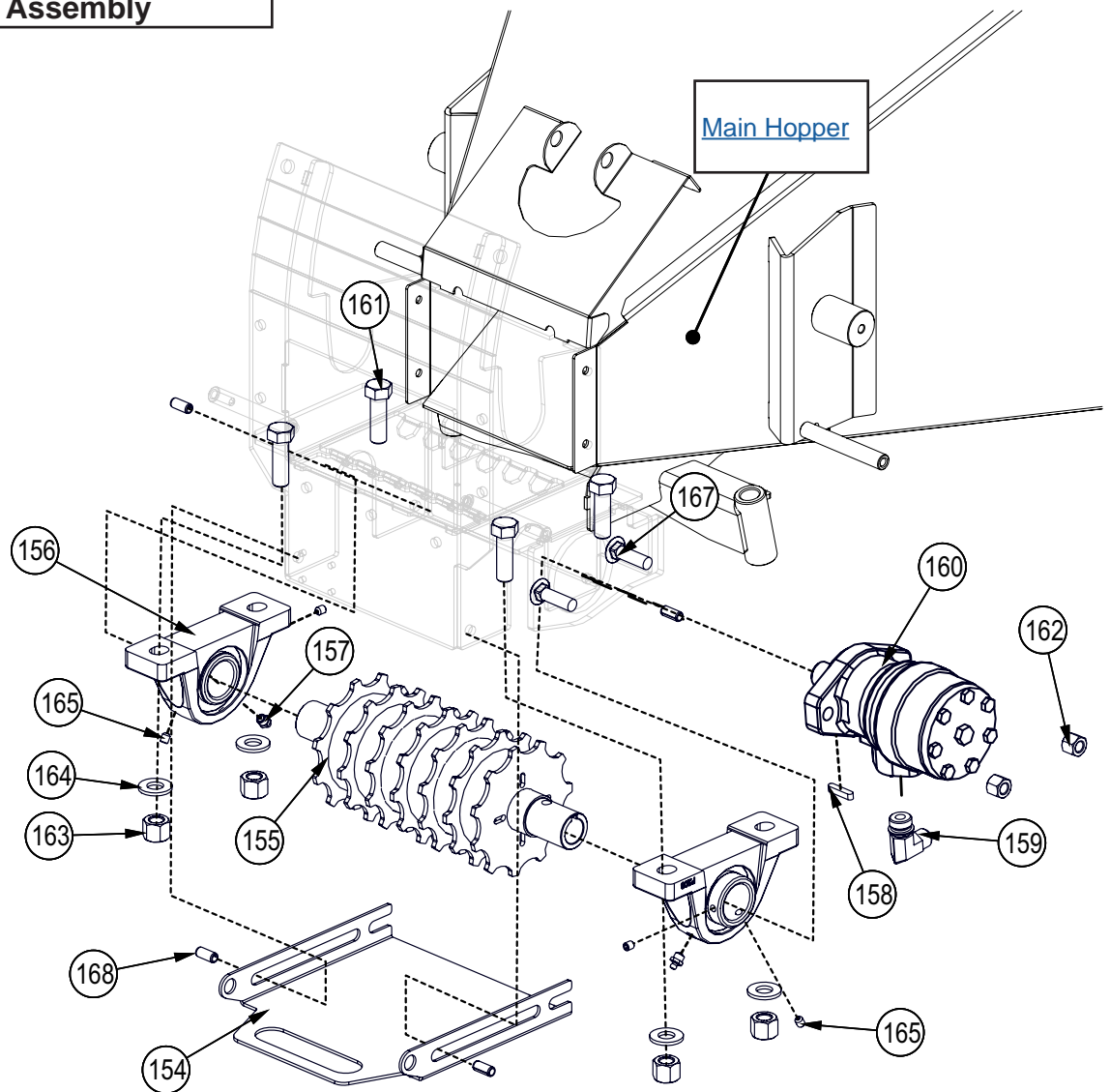
| Item No. | Part No. | Description | Qty |
|----------|-----------|--|-----|
| 107 | 1024W602H | Roller Pivot Arm RH | 1 |
| 108 | 1024L618 | Capture Washer | 1 |
| 109 | Z25204 | 4-Bolt Flange Bearing, UCF208-24 | 1 |
| 110 | Z29202 | Grease Fitting, 1/4NF | 1 |
| 111 | Z29204 | Elbow 45 Grease Fitting, MP02 | 1 |
| 112 | Z29302 | Grease Fitting, FP x FPX 0202 | 1 |
| 114 | Z29307 | Elbow 90 Grease Fitting, MP x FPX 0202 | 1 |
| 115 | Z29311 | Grease Fitting, MP x FPX 0202 | 1 |
| 116 | Z71220 | Hex Bolt, 5/16NC x 2" | 1 |
| 117 | Z71310 | Hex Bolt, 3/8NC x 1" | 1 |
| 118 | Z72221 | Hex Lock Nut, 5/16NC | 1 |
| 119 | Z72251 | Hex Lock Nut, 1/2NC | 4 |
| 120 | Z74122 | Set Screw, 5/16NF x 3/8" | 2 |
| 121 | Z79462 | Double Hose Clamp, 1/2" OD | 1 |

Left Upper Roller Pivot Assembly



| Item No. | Part No. | Description | Qty |
|----------|----------|-------------------------------------|-----|
| 122 | 1024F502 | 1/4" Grease Whip, MP02 x MP02 x 11" | 1 |
| 123 | 1024L618 | Capture Washer | 1 |
| 124 | 1024L771 | Motor Bearing Interface | 1 |
| 125 | 1024M505 | Motor Bearing Spacer | 4 |
| 126 | 1024W602 | Roller Pivot Arm LH | 1 |
| 127 | Z25204 | 4-Bolt Flange Bearing, 1-1/2" Bore | 1 |
| 128 | Z29202 | Grease Zerk 1/4NF | 1 |
| 129 | Z29204 | Grease Fitting, 1/8NPT x 45 | 1 |
| 130 | Z29302 | Straight, FP x FPX 0202 | 1 |
| 131 | Z29307 | Elbow 90 MP x FPX 0202 | 1 |
| 132 | Z29311 | Straight, MP x FPX 0202 | 1 |
| 133 | Z46594 | Blind Chipper Key 1/4 x 1-1/4 | 1 |
| 134 | Z51658 | Elbow 90, MJIC x MORB 0810 | 2 |
| 135 | Z54102 | Hydraulic Motor, 200CCR | 1 |
| 136 | Z71220 | Hex Bolt, 5/16NC x 2" | 2 |
| 137 | Z71310 | Hex Bolt, 3/8NC x 1" | 1 |
| 138 | Z72221 | Hex Lock Nut, 5/16NC | 2 |
| 139 | Z72251 | Hex Lock Nut, 1/2NC | 6 |
| 140 | Z74122 | Set Screw, 5/16NF x 3/8" | 2 |
| 141 | Z76258 | Carriage Bolt, 1/2NC x 1-3/4" | 2 |
| 142 | Z79462 | Double Hose Clamp, 1/2" OD | 1 |
| 143 | Z79463 | Double Hose Clamp, 11/16" OD | 1 |

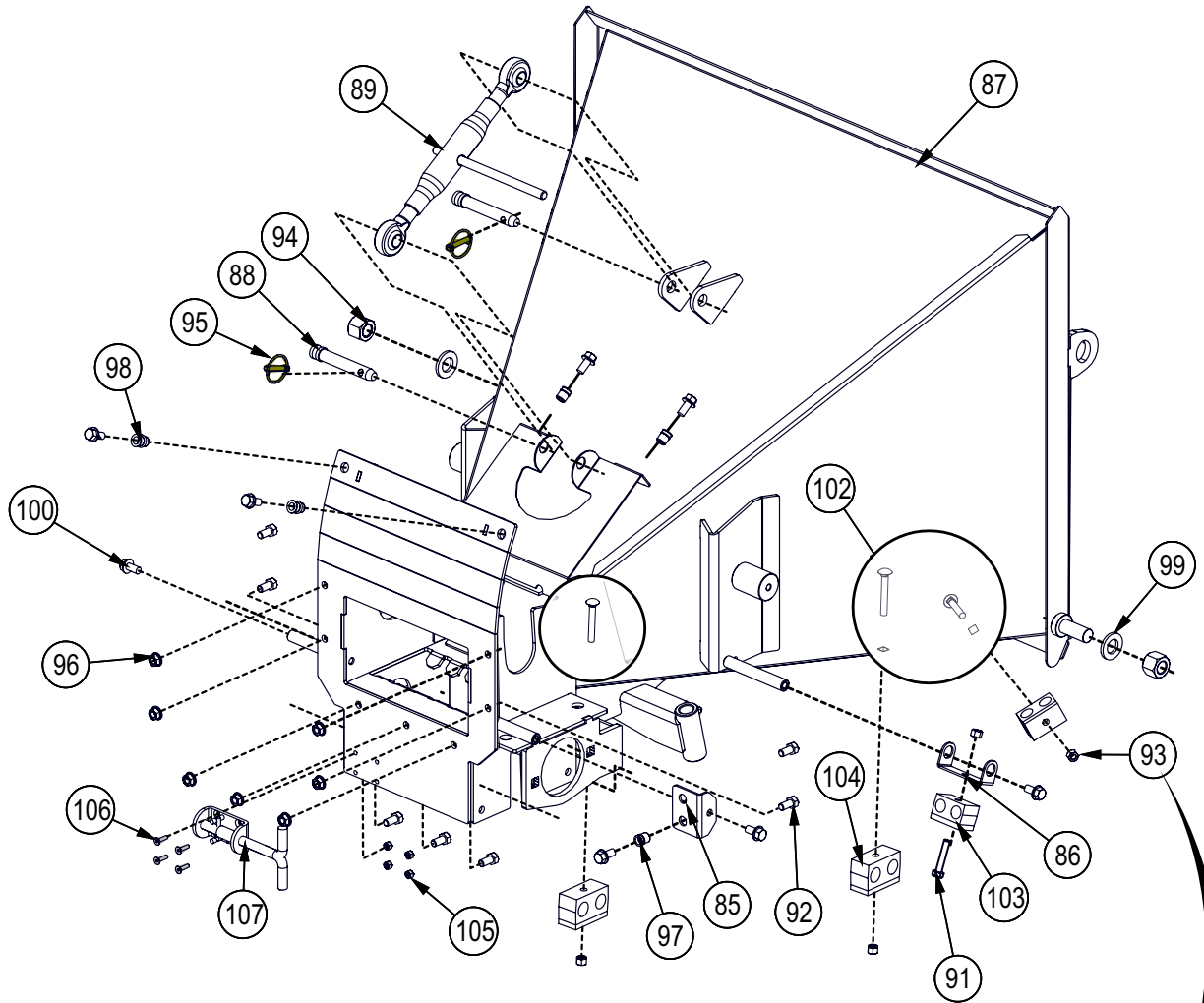
Lower Roller Assembly



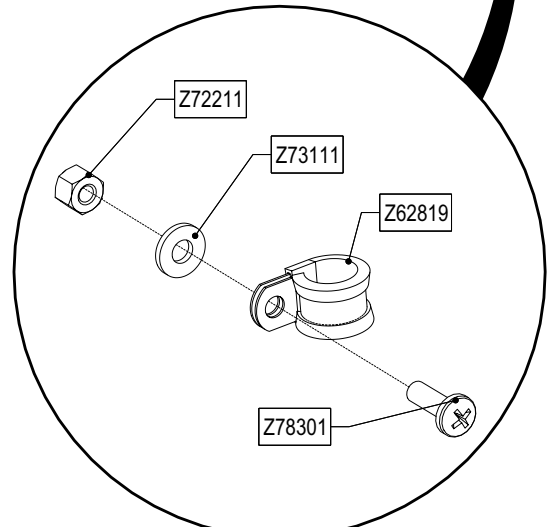
| Item No. | Part No. | Description | Qty |
|----------|----------|-------------------------------|-----|
| 154 | 1024L774 | Lower Roller Guard | 1 |
| 155 | 1024W605 | Lower Feed Roll | 1 |
| 156 | Z24101 | P208 Pillow Block 1-1/2 | 2 |
| 157 | Z29201 | Grease Fitting, 1/8NPT | 2 |
| 158 | Z46594 | Blind Chipper Key 1/4 x 1-1/4 | 1 |
| 159 | Z51658 | Elbow 90, MJIC x MORB 0810 | 2 |
| 160 | Z54102 | Hydraulic Motor, 200CCR | 1 |
| 161 | Z71620 | Hex Bolt, 5/8NC x 2" | 4 |
| 162 | Z72251 | Hex Lock Nut, 1/2NC | 2 |
| 163 | Z72261 | Hex Lock Nut, 5/8NC | 4 |
| 164 | Z73161 | SAE Washer, 5/8" | 4 |
| 165 | Z74122 | Set Screw, 5/16NF x 3/8" | 4 |
| 167 | Z76258 | Carriage Bolt, 1/2NC x 1-3/4" | 2 |
| 168 | Z14301 | Roll Pin, 10mm x 22mm | 4 |

* Seal Kit SKMLHP-U/DE

Main Hopper Assembly



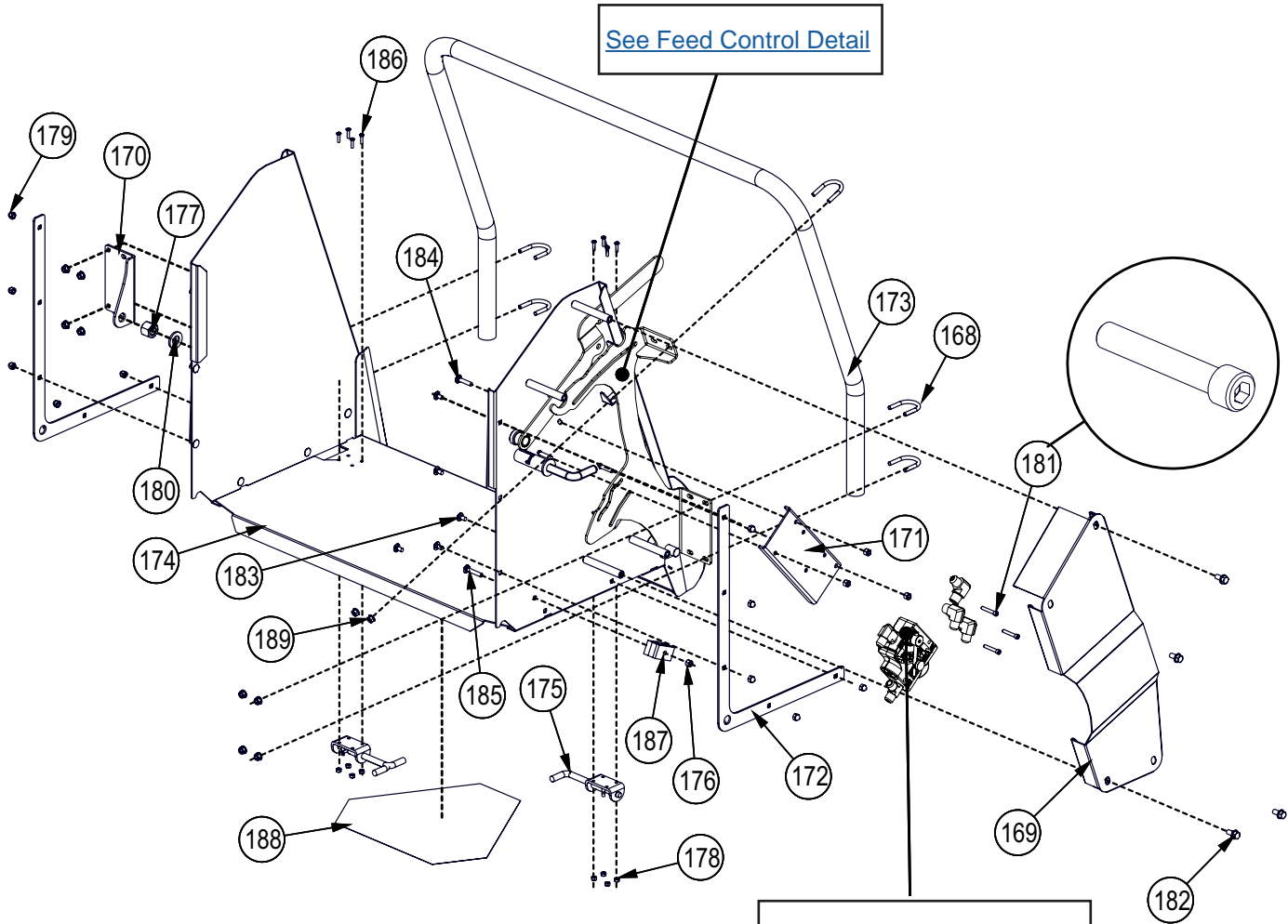
| Item No. | Part No. | Description | Qty |
|----------|----------|----------------------------------|-----|
| 85 | 1023L300 | Bridge Guard Mount | 1 |
| 86 | 1024L775 | Clamp Mount | 1 |
| 87 | 1024W601 | Main Hopper | 1 |
| 88 | Z11111 | Toplink Pin, 5/8" x 2-3/4" | 2 |
| 89 | Z11501 | Toplink, Cat 0 x 10-1/2" x 16" | 1 |
| 91 | Z71217 | Hex Bolt, 5/16NC x 1-3/4" | 1 |
| 92 | Z71307 | Hex Bolt, 3/8NC x 3/4" | 7 |
| 93 | Z72221 | Hex Lock Nut, 5/16NC | 4 |
| 94 | Z72271 | Hex Lock Nut, 3/4NC | 2 |
| 95 | Z12120 | Lynch Pin, 1/4" | 2 |
| 96 | Z72531 | Serrated Flange Locknut, 3/8NC | 7 |
| 97 | Z72958 | Rivet Nut, 3/8NC x 150 | 3 |
| 98 | Z72959 | Rivet Nut, 3/8NC x 312 | 2 |
| 99 | Z73171 | SAE Washer, 3/4" | 2 |
| 100 | Z76133 | Flange Bolt, 3/8NC x 3/4" | 9 |
| 102 | Z76228 | Carriage Bolt, 5/16NC x 2-1/4" | 2 |
| 103 | Z79463 | Double Hose Clamp, 11/16" OD | 2 |
| 104 | Z79464 | Double Hose Clamp, 13/16" OD | 2 |
| 105 | Z72204 | Hex Lock Nut, #10NF | 4 |
| 106 | Z75203 | FHCS, #10NF x 3/4" | 4 |
| 107 | Z18207 | Spring Latch Pin 1/2 x 1" Stroke | 1 |



Used on BX52RI instead of # 93, 101 & 103.

| Part No. | Description | Qty |
|----------|-----------------------------|-----|
| Z62819 | Rubberized Wire Clamp, 1/2" | 1 |
| Z72211 | Hex Lock Nut, 1/4NC | 1 |
| Z73111 | SAE Washer, 1/4" | 1 |
| Z78301 | Machine Screw, 1/4NC x 3/4" | 1 |

Feed Table Assembly



| Item No. | Part No. | Description | Qty |
|----------|----------|------------------------------------|-----|
| 168 | 1015S538 | U-bolt, Bearing Adapter | 5 |
| 169 | 1022L256 | Valve Guard | 1 |
| 170 | 1022L271 | Feed Control Pivot | 1 |
| 171 | 1022W217 | Valve Mount Weldment | 1 |
| 172 | 1024L724 | Fold Table Trap Plate | 2 |
| 173 | 1024S703 | Feed Control Handle | 1 |
| 174 | 1024W704 | Feed Table Weldment | 1 |
| 175 | Z18207 | Spring Latch Pin, 1/2" x 1" Stroke | 2 |
| 176 | Z72221 | Hex Lock Nut, 5/16NC | 4 |
| 177 | Z72271 | Hex Lock Nut, 3/4NC | 1 |
| 178 | Z72204 | Hex Lock Nut, #10NF | 8 |
| 179 | Z72914 | Acorn Nut, 5/16NC | 10 |
| 180 | Z73171 | SAE Washer, 3/4" | 1 |
| 181 | Z75116 | SHCS, 1/4NC x 1-1/2" | 3 |
| 182 | Z76133 | Flange Bolt, 3/8NC x 3/4" | 4 |
| 183 | Z76222 | Carriage Bolt, 5/16NC x 5/8" | 10 |
| 184 | Z76224 | Carriage Bolt, 5/16NC x 1-1/2" | 3 |
| 185 | Z76227 | Carriage Bolt, 5/16NC x 1-3/4" | 1 |
| 186 | Z78316 | Machine Screw, #10NF x 3/4" | 8 |
| 187 | Z79463 | Double Hose Clamp, 11/16" OD | 1 |
| 188 | Z94601 | Decal, SMV | 1 |
| 189 | Z72521 | Serrated Flange Locknut, 5/16NC | 10 |

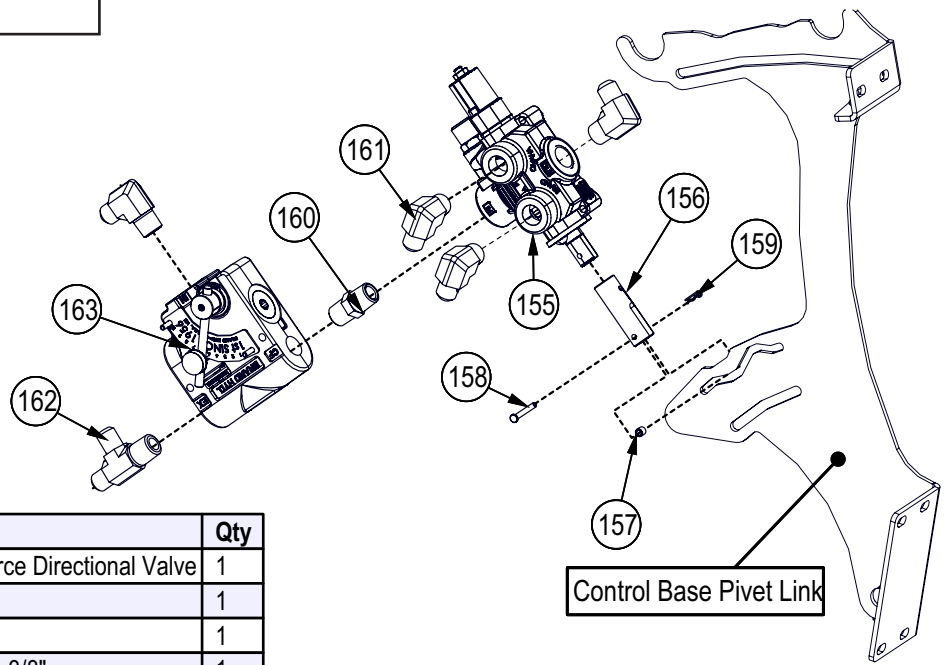
[See Feed Roller Valve Detail](#)

Used on BX52RI instead of # 176, 185 & 187.

| Part No. | Description | Qty |
|----------|-----------------------------|-----|
| Z62819 | Rubberized Wire Clamp, 1/2" | 1 |
| Z72211 | Hex Lock Nut, 1/4NC | 1 |
| Z73111 | SAE Washer, 1/4" | 1 |
| Z78301 | Machine Screw, 1/4NC x 3/4" | 1 |

Roller Valve Detail

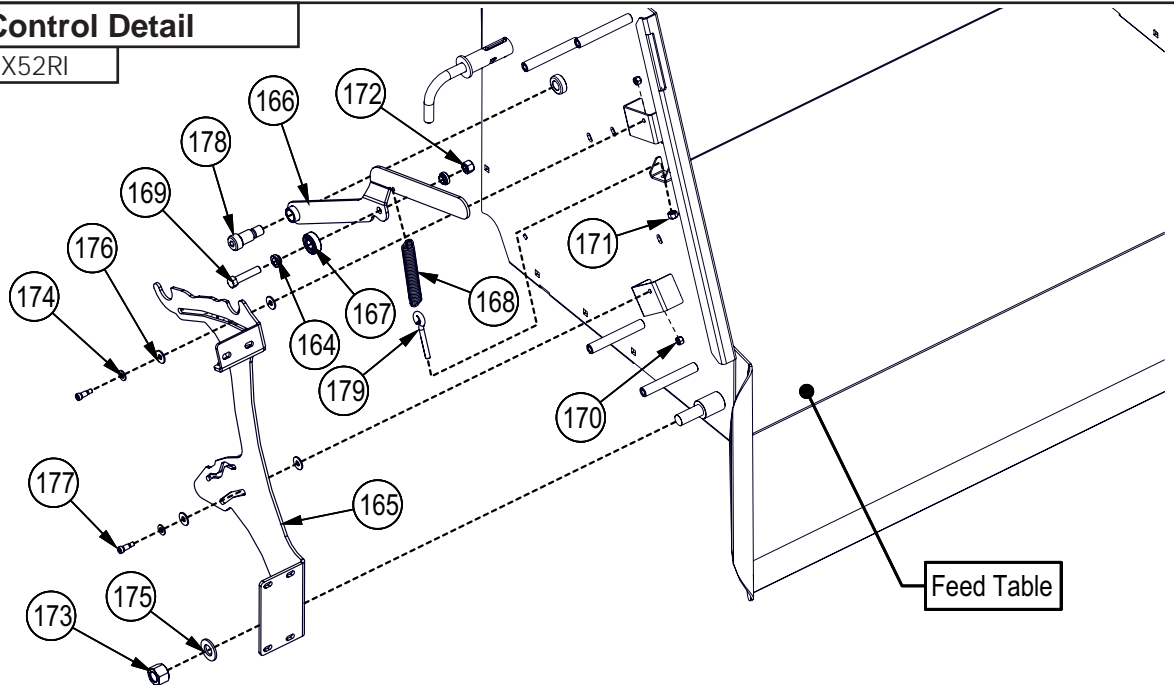
MODELS BX52REU, BX52RI



| Item No. | Description | Description | Qty |
|----------|-------------|--|-----|
| 155 | Z56215 | Spring Ctr Low Force Directional Valve | 1 |
| 156 | 1022M213 | Bearing Yoke | 1 |
| 157 | 1022M217 | Solid Bearing | 1 |
| 158 | Z11301 | Clevis Pin 3/16 x 1-3/8" | 1 |
| 159 | Z12210 | Hitch Pin Clip, 1/16 | 1 |
| 160 | Z51122 | Nipple, MP x MP 0808 | 1 |
| 161 | Z51451 | #8JIC x 1/2NPT 90 Elbow | 4 |
| 162 | Z51487 | Tee MJIC x MP x MJIC 080808 | 1 |
| 163 | Z56305 | Brand PFC 0-8 GPM | 1 |

Feed Roller Control Detail

MODELS BX52REU, BX52RI

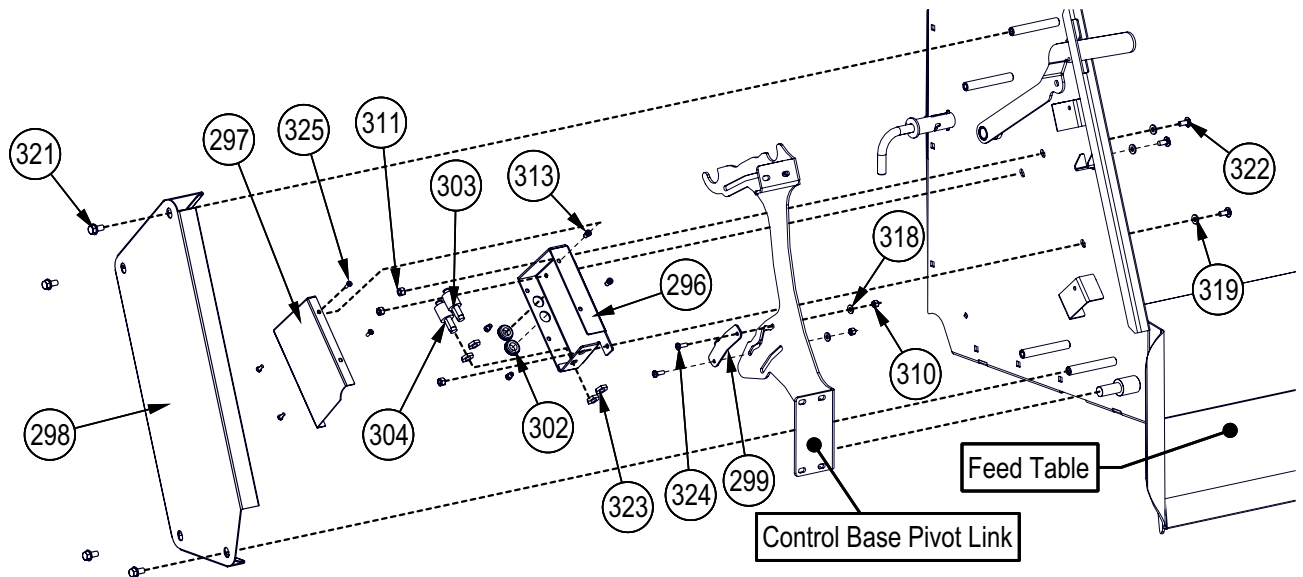


| Item No. | Description | Description | Qty |
|----------|-------------|-------------------------|-----|
| 164 | 1015M537 | Bushing, Bearing | 2 |
| 165 | 1022L239 | Control Base Pivot Link | 1 |
| 166 | 1022W224 | Detent Reset | 1 |
| 167 | Z21203 | Ball Bearing 6202 RS | 1 |
| 168 | Z31401 | Spring 3/4 x 4" Heavy | 1 |
| 169 | Z71420 | Hex Bolt, 7/16NC x 2 | 1 |
| 170 | Z72211 | Hex Lock Nut, 1/4NC | 2 |
| 171 | Z72221 | Hex Lock Nut, 5/16NC | 1 |
| 172 | Z72241 | Hex Lock Nut, 7/16NC | 1 |

| Item No. | Description | Description | Qty |
|----------|-------------|---------------------------------|-----|
| 173 | Z72271 | Hex Lock Nut, 3/4NC | 1 |
| 174 | Z73122 | Flat Washer, 5/16 | 2 |
| 175 | Z73171 | Flat Washer, 3/4" | 1 |
| 176 | Z73222 | PTFE Flat Washer, 5/16 x 0.080" | 4 |
| 177 | Z75522 | Shoulder Bolt, 5/16 x 1/2" | 2 |
| 178 | Z75574 | Shoulder Bolt, 3/4 x 1 | 1 |
| 179 | Z76522 | Eye Bolt 5/16NC x 2 | 1 |

Intellifeed Roller Control Components

MODEL BX52RI

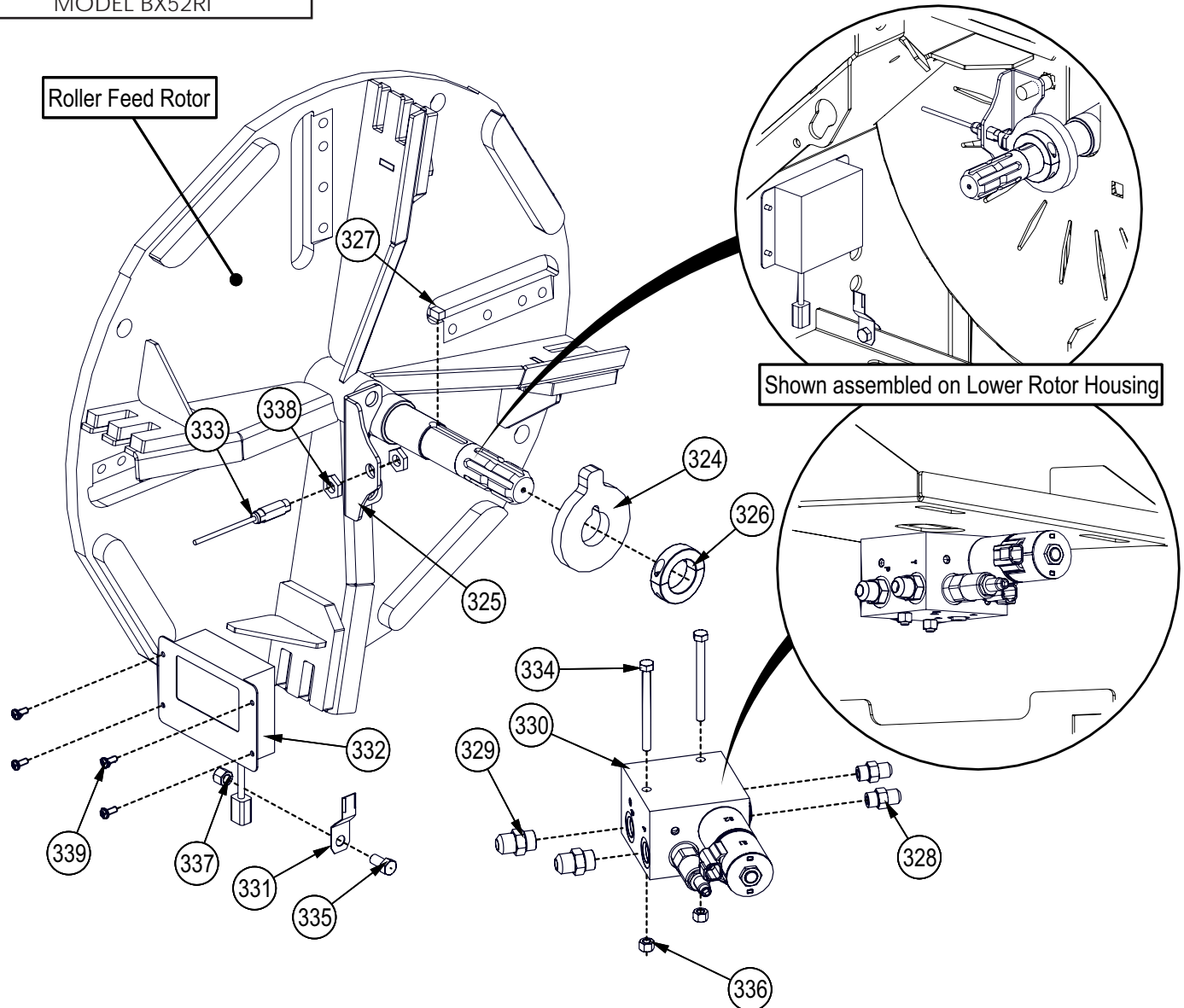


| Item No. | Description | Description | Qty |
|----------|-------------|------------------------------|-----|
| 296 | 1083L154 | Switch Mount Plate, BX102RI | 1 |
| 297 | 1083L155 | Sensor Box Lid | 1 |
| 298 | 1083L156 | Feed Switch Guard | 1 |
| 299 | 1083L157 | Feed Pickup Trigger | 1 |
| 302 | Z62823 | Rubber Grommet 3/4 x 1/8 | 2 |
| 303 | Z64403 | Prox Switch NO Sourcing 5amp | 1 |
| 304 | Z64405 | Prox Switch NO Sinking 5amp | 1 |
| 310 | Z72211 | Hex Lock Nut, 1/4NC | 2 |
| 311 | Z72221 | Hex Lock Nut, 5/16NC | 3 |

| Item No. | Description | Description | Qty |
|----------|-------------|-----------------------------------|-----|
| 313 | Z72954 | Riv-Nut #10-32NF - 130 | 4 |
| 318 | Z73111 | Flat Washer, 1/4 | 2 |
| 319 | Z73123 | Rubber Flat Washer, 5/16 x 0.093" | 3 |
| 321 | Z76133 | Flange Bolt, 3/8NC x 3/4 | 4 |
| 322 | Z76221 | Carriage Bolt, 5/16NC x 3/4 | 3 |
| 323 | Z77282 | Jam Nut, M14 x 1.5 | 4 |
| 324 | Z78301 | Machine Screw, 1/4-20NC x 3/4 | 2 |
| 325 | Z78303 | Machine Screw, #10-32NF x 1/2 | 4 |

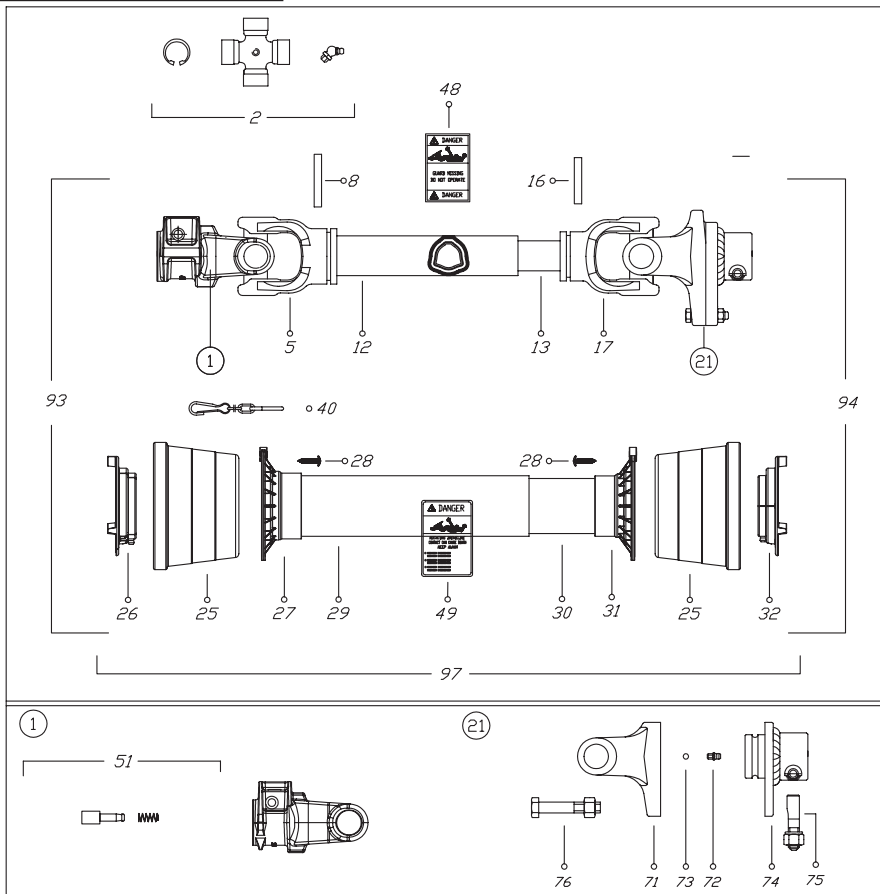
IntelliFeed Components

MODEL BX52RI



| Item No. | Description | Description | Qty |
|----------|-------------|--|-----|
| 324 | 1023L751 | Rotor Speed Indicator, BX102R | 1 |
| 325 | 1024L556 | Sensor Mounting Bracket | 1 |
| 326 | Z46315 | Shaft Collar, 1-3/8" ID x 9/16 | 1 |
| 327 | Z46545 | Key, 5/16 x 5/16 x 1/2 | 1 |
| 328 | Z51641 | Straight, MJIC x MORB 0606 | 2 |
| 329 | Z51643 | Straight, MJIC x MORB 0808 | 2 |
| 330 | Z56508 | Single Spool Valve, OC Tandem PROPSOL x 6GPM | 1 |
| 331 | Z62816 | Deutsch Mounting Clip | 1 |
| 332 | Z66204 | Control, IntelliFEED | 1 |
| 333 | Z66210 | IntelliFEED Pickup Sensor with 68" Lead | 1 |
| 334 | Z71235 | Hex Bolt, 5/16NC x 3-1/2" | 2 |
| 335 | Z71307 | Hex Bolt, 3/8NC x 3/4" | 1 |
| 336 | Z72221 | Hex Lock Nut, 5/16NC | 2 |
| 337 | Z72231 | Hex Lock Nut, 3/8NC | 1 |
| 338 | Z72357 | Brass Jam Nut, 9/16NF | 2 |
| 339 | Z78303 | Machine Screw, #10NF x 1/2" | 4 |

PTO Shaft #Z44504



VIETATE LE RIPRODUZIONI NON AUTORIZZATE TOUTE REPRODUCTION NON AUTORISEE EST INTERDITE CODICE C.E.D. DATA
 NOT PERMITTED AL RIGHTS RESERVED NICHT GENEHMIGTE VERVIELFÄLTUNGEN SIND UNZULASSIG B8D061US098001 29/01/10

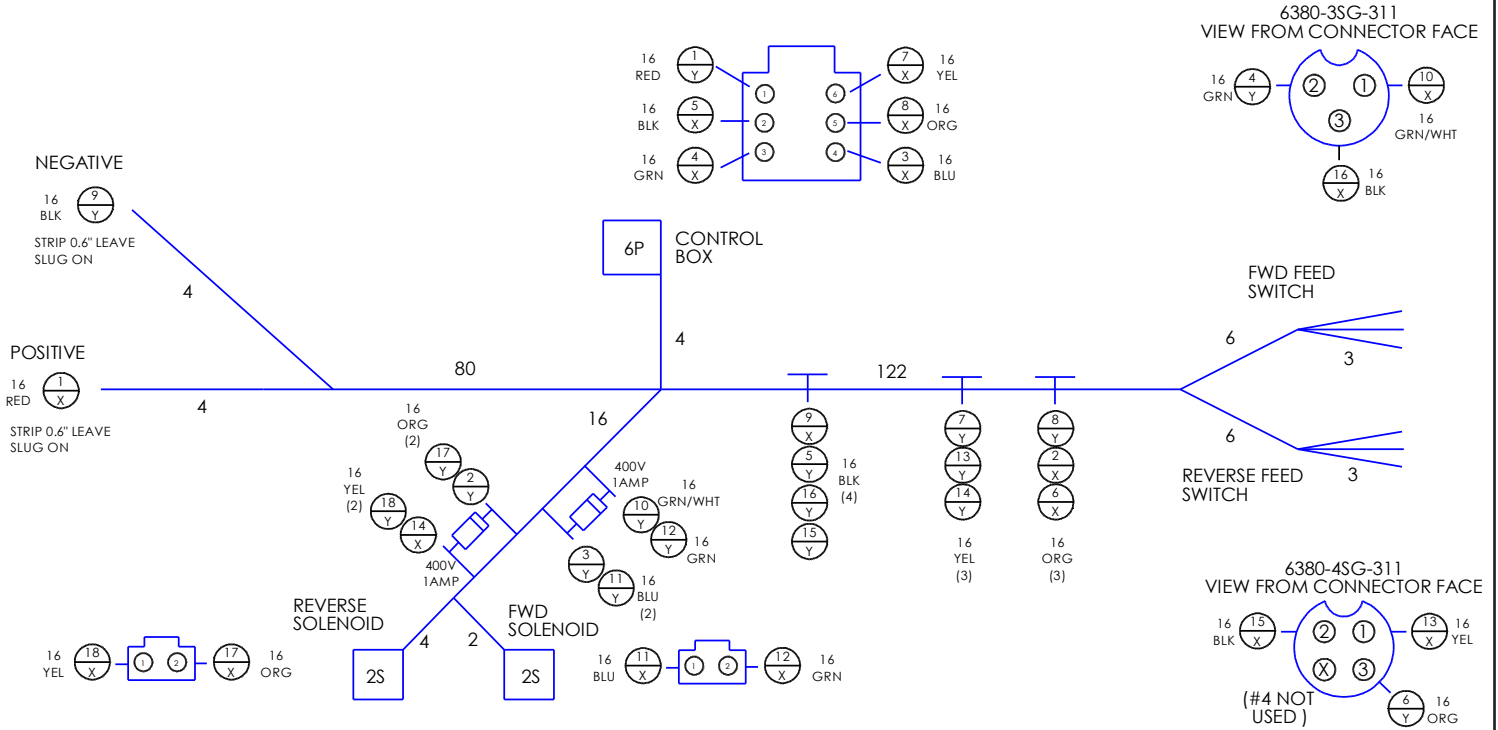
Binacchi SPARE PARTS LIST : B5D056US098001

| POS. | DESCRIPTION | Q. | Part # |
|------|----------------------------------|----|-----------------|
| 01 | YOKE | 1 | 0800503 |
| 02 | CROSS JOURNAL ASS. | 2 | 08205 |
| 05 | OUTER TUBE YOKE | 1 | 08005021 |
| 08 | FLEXIBLE PIN | 1 | 098701075 |
| 12 | CM. 100 CARDAN TUBE(*) | 1 | 09881523100 |
| 13 | CM. 100 CARDAN TUBE(*) | 1 | 09881454100 |
| 16 | FLEXIBLE PIN | 1 | 0987001065 |
| 17 | INNER TUBE YOKE | 1 | 08005011 |
| 21 | SHEAR BOLT M10X1.5X55 | 1 | Z19407 (5 Pack) |
| 25 | CONE SHIELD BELL 05-06 | 2 | 021906C001 |
| 26 | OUTER BEARING 05 | 1 | 025505C001 |
| 27 | OUTER BASE CONE 05-06 | 1 | 025406C001 |
| 28 | SCREW | 6 | 0998052242 |
| 29 | OUTER SAFETY TUBE | 1 | 0988981NB5056 |
| 30 | INNER SAFETY TUBE | 1 | 0988975NB5056 |
| 31 | INNER BASE CONE 05-06 | 1 | 025406C002 |
| 32 | INNER BEARING 05 | 1 | 025505C002 |
| 40 | CHAIN | 1 | 0252000001 |
| 48 | LABEL DANGER OUTER DRIVE TUBE | 1 | 09872006 |
| 49 | EXTERNAL SHIELD LABEL | 1 | 09872003 |
| 51 | COMPLETE PUSH BUTTTON | 1 | 0986014047 |
| 71 | YOKE FOR LB5 | 1 | 08896905 |
| 72 | GREASE NIPPLE | 1 | 0984010150 |
| 73 | STEEL BALL | 23 | 098680104 |
| 74 | HUB | 1 | 088965A60 |
| 75 | PUSH PIN SET | 1 | 0986014075 |
| 76 | NUT AND BOLT M10 x 1.5 x 55 10.9 | 1 | Z19407 (5 Pack) |
| 93 | OUTER HALF SHAFT | 1 | B5056US2 |
| 94 | INNER HALF SHAFT | 1 | B5056US1098001 |
| 97 | SAFETY GUARD | 1 | 083US05056 |

Intellifeed Wiring Diagram #Z62109

MODEL BX52RI

NOTE: HARNESS IS BRAIDED



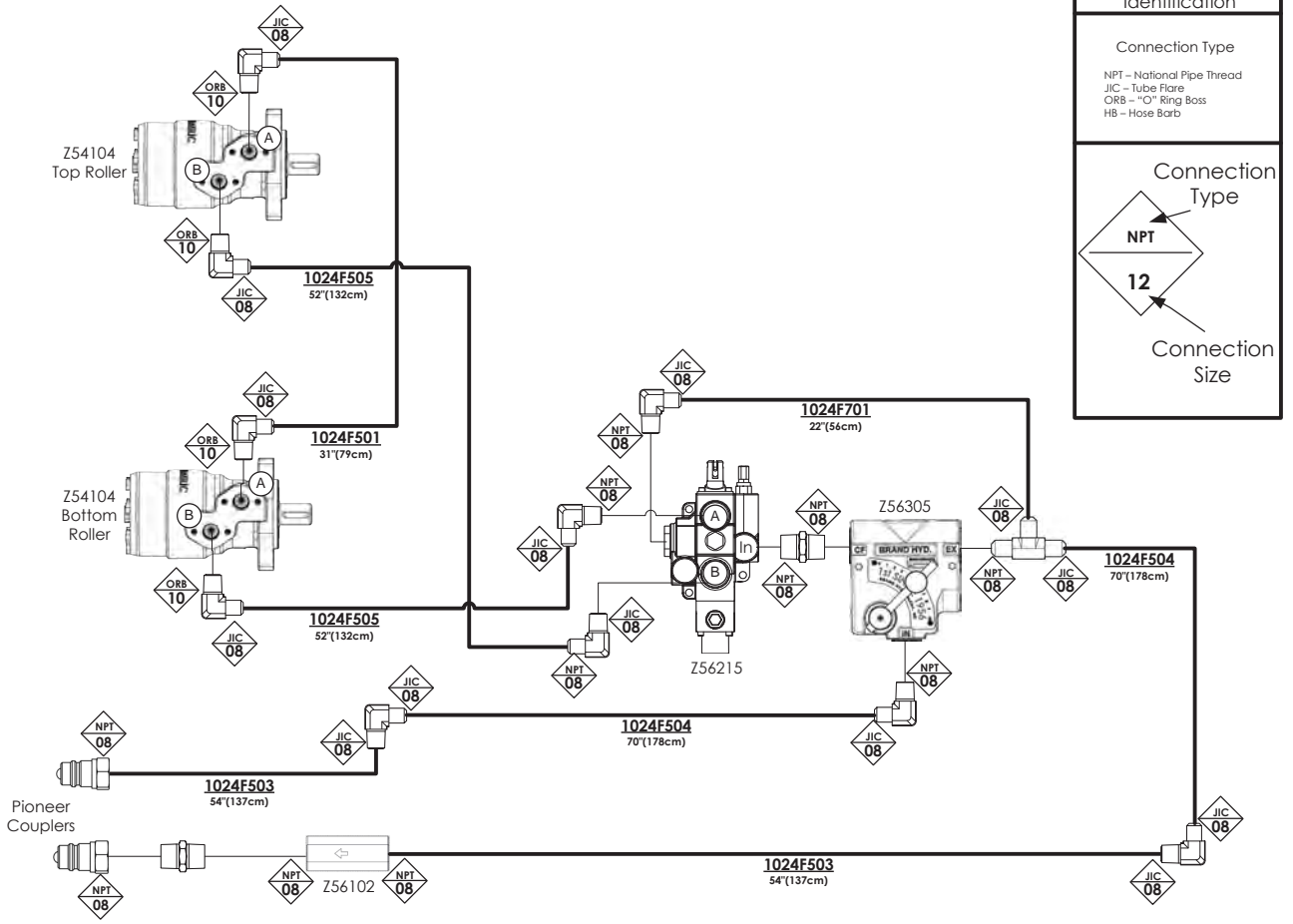
Hydraulic Hose Parts List

The table below is a complete list of hydraulic hoses for all models of the BX52R & BX52RI. For information on your model and its hose connections please review the hydraulic schematics on the following pages.

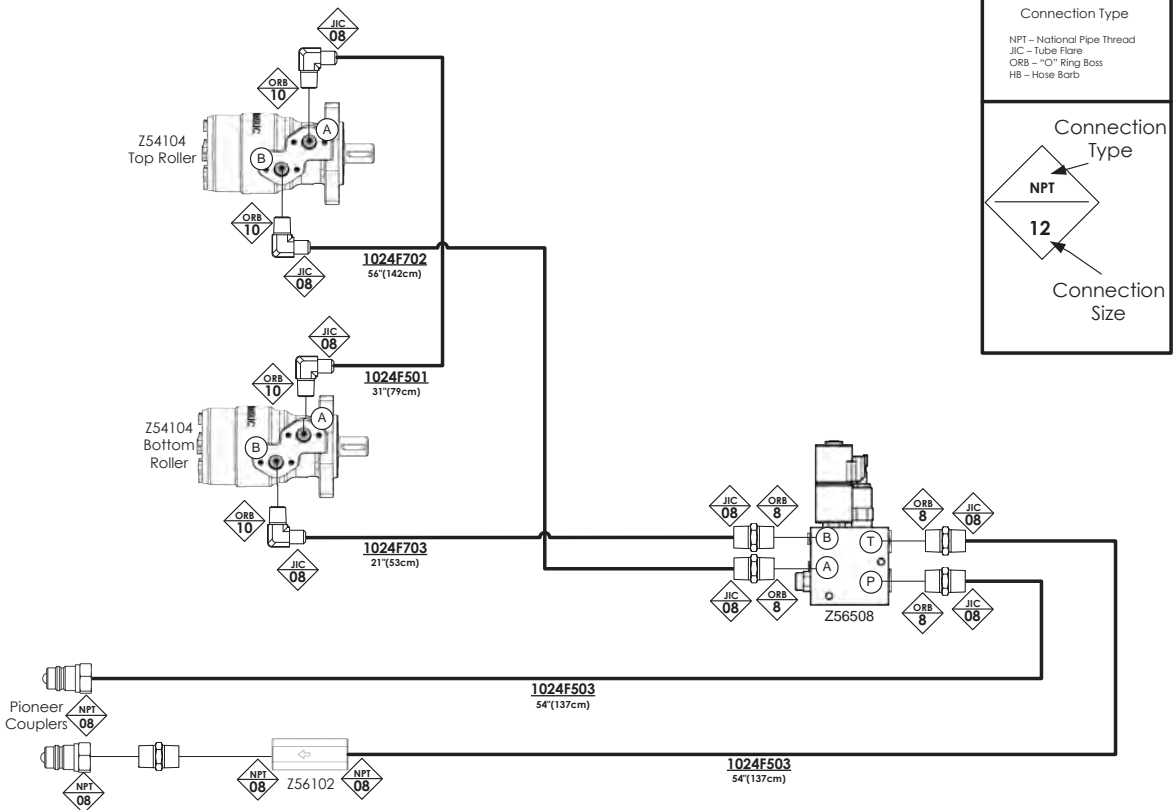
| PARTNUMBER | | Description | QTY | |
|------------------------|----------------------------|------------------------------------|-------|--------|
| With Protective Sleeve | With Out Protective Sleeve | | BX52R | BX52RI |
| 1024F501SC | 1024F501 | 3/8" Hose, FJIC08 x FJIC08 x 31" | 1 | 1 |
| 1024F503SC | 1024F503 | 1/2" Hose, FJIC08 x MP08 x 54" | 2 | 2 |
| 1024F504SC | 1024F504 | 1/2" Hose, FJIC08 x FJIC08 x 70" | 2 | |
| 1024F505SC | 1024F505 | 3/8" Hose, FJIC08 x FJIC08 x 52" | 2 | |
| 1024F703SC | 1024F703 | 3/8" Hose, FJIC08 x 90FJIC06 x 21" | | 2 |

Hoses with Protective Sleeves are required for EU models

Hydraulic Plumbing Diagram BX52REU



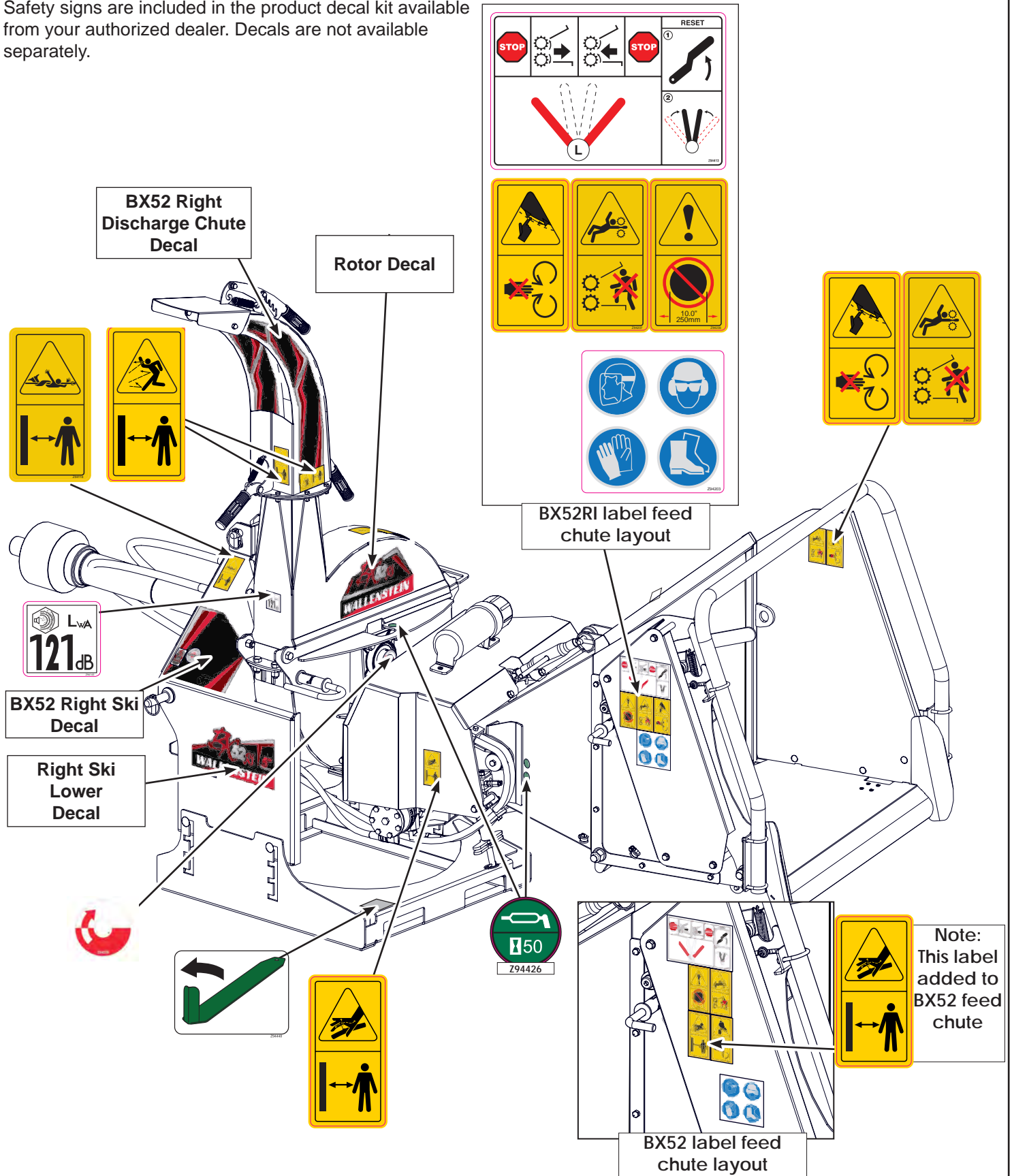
Hydraulic Plumbing Diagram BX52RI



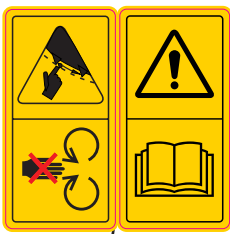
Decal Layout - Left Side View

IMPORTANT! If parts are replaced that have safety signs on them, new signs must be applied. Safety signs must always be replaced if they become damaged, are removed, or become illegible.

Safety signs are included in the product decal kit available from your authorized dealer. Decals are not available separately.



Decal Layout - Right Side View



BX52 Left Discharge Chute Decal

BX52RI Rotor Rear Decal

BX52R Rotor Rear Decal

BX52 Left Ski Decal

BX52RI Left Ski Lower Decal

BX52R Left Ski Lower Decal

MODEL: #####

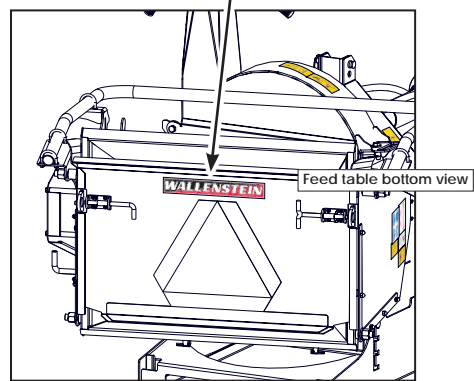
SERIAL NUMBER: #####

WALLENSTEIN www.embmfg.com
 EMB MFG INC. 4144 BOOMER LINE,
 ST CLEMENTS, ON N0B 2M0 CANADA

Serial Label

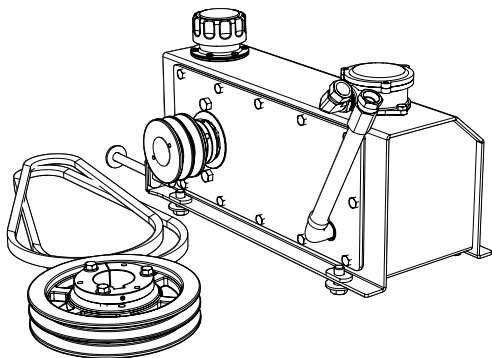
INTELLIFEED
ELECTRONIC CONTROL SYSTEM

WALLENSTEIN



Accessories

Call your dealer for pricing and availability

**#C3540 SELF CONTAINED PTO
POWER PACK**

For model: **BX52R & BX52RI**

Easy to install

For tractors without available hydraulics, the optional power-pack mounts on the chipper just under the PTO shaft, and provides you with the means to operate the hydraulic feed hopper on model BX52R and BX52RI.


Bolt Torque

Checking Bolt Torque

The tables shown give correct torque values for various bolts and capscrews. Tighten all bolts to the torque values specified in the table, unless indicated otherwise. Check tightness of bolts periodically.

IMPORTANT! If replacing hardware, use fasteners of the same grade.

IMPORTANT! Torque figures indicated in the table are for non-greased or non-oiled threads. Do not grease or oil threads unless indicated otherwise. When using a thread locker, increase torque values by 5%.

 **NOTE:** Bolt grades are identified by their head markings.

Imperial Bolt Torque Specifications

| Bolt Diameter | Torque Value | | | | | |
|---------------|--------------|-----|-----------|-----|-----------|------|
| | SAE Gr. 2 | | SAE Gr. 5 | | SAE Gr. 8 | |
| | lbf•ft | N•m | lbf•ft | N•m | lbf•ft | N•m |
| 1/4" | 6 | 8 | 9 | 12 | 12 | 17 |
| 5/16" | 10 | 13 | 19 | 25 | 27 | 36 |
| 3/8" | 20 | 27 | 33 | 45 | 45 | 63 |
| 7/16" | 30 | 41 | 53 | 72 | 75 | 100 |
| 1/2" | 45 | 61 | 80 | 110 | 115 | 155 |
| 9/16" | 60 | 95 | 115 | 155 | 165 | 220 |
| 5/8" | 95 | 128 | 160 | 215 | 220 | 305 |
| 3/4" | 165 | 225 | 290 | 390 | 400 | 540 |
| 7/8" | 170 | 230 | 420 | 570 | 650 | 880 |
| 1" | 225 | 345 | 630 | 850 | 970 | 1320 |



Metric Bolt Torque Specifications

| Bolt Diameter | Torque Value | | | |
|---------------|--------------|-------|----------|-------|
| | Gr. 8.8 | | Gr. 10.9 | |
| | lbf•ft | N•m | lbf•ft | N•m |
| M3 | 0.4 | 0.5 | 1.3 | 1.8 |
| M4 | 2.2 | 3 | 3.3 | 4.5 |
| M6 | 7 | 10 | 11 | 15 |
| M8 | 18 | 25 | 26 | 35 |
| M10 | 37 | 50 | 52 | 70 |
| M12 | 66 | 90 | 92 | 125 |
| M16 | 166 | 225 | 229 | 310 |
| M20 | 321 | 435 | 450 | 610 |
| M30 | 1,103 | 1 495 | 1,550 | 2 100 |
| M36 | 1,917 | 2 600 | 2,700 | 3 675 |



Hydraulic Fitting Torque**Tightening Flare Type Tube Fittings**

1. Check flare and flare seat for defects that might cause leakage.
2. Align tube with fitting before tightening.
3. Hand-tighten swivel nut until snug.
4. To prevent twisting the tube, use two wrenches. Place one wrench on the connector body and tighten the swivel nut with the second. Torque to values shown.

If a torque wrench is not available, use the FFFT (Flats From Finger Tight) method.

| Hydraulic Fitting Torque | | | | | |
|--------------------------|-----------------------|--------------|---------|-------------------------|-------|
| Tube Size OD | Hex Size Across Flats | Torque value | | Flats From Finger Tight | |
| | | lbf•ft | N•m | Flats | Turns |
| 3/16 | 7/16 | 6 | 8 | 2 | 1/6 |
| 1/4 | 9/16 | 11–12 | 15–17 | 2 | 1/6 |
| 5/16 | 5/8 | 14–16 | 19–22 | 2 | 1/6 |
| 3/8 | 11/16 | 20–22 | 27–30 | 1-1/4 | 1/6 |
| 1/2 | 7/8 | 44–48 | 59–65 | 1 | 1/6 |
| 5/8 | 1 | 50–58 | 68–79 | 1 | 1/6 |
| 3/4 | 1-1/4 | 79–88 | 107–119 | 1 | 1/8 |
| 1 | 1-5/8 | 117–125 | 158–170 | 1 | 1/8 |

Values shown are for non-lubricated connections.