

PARTS MANUAL

Serial number 1103118 and up

WX15H Log Splitter

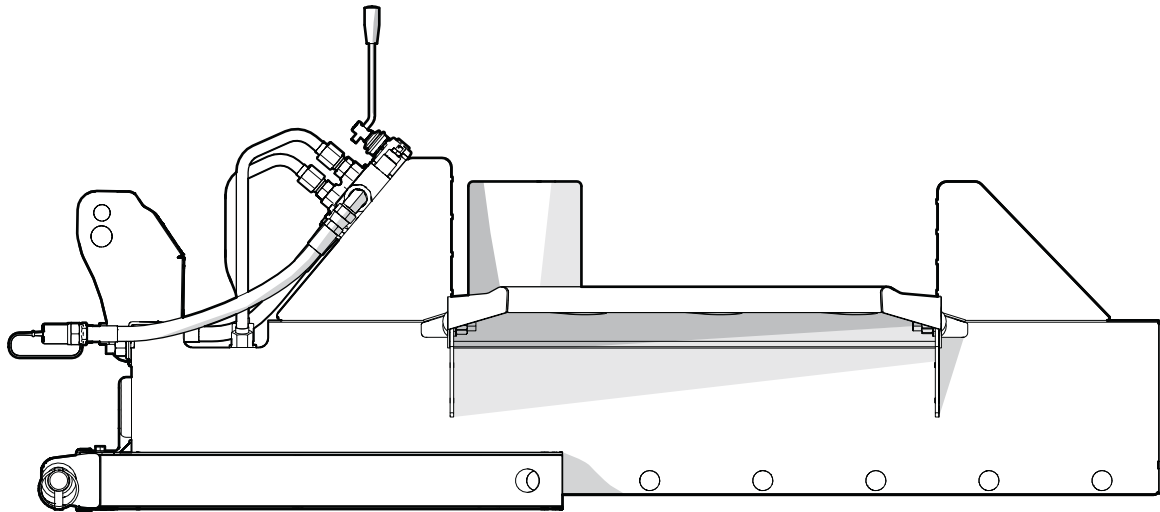


Table of Contents

Introduction3
Model and Serial Number Location.....3
Main Parts.....4
Log Splitter Assembly5
Three-Point Hitch Assembly6
Hydraulic Circuit.....7
Label Locations8
Accessories9
Bolt Torque10
Hydraulic Fitting Torque.....11

Introduction

! WARNING!

For safety, operation, and maintenance information, see the Operator’s Manual for your product.

Only qualified people are approved to maintain the machine.

! WARNING!

Replace all safety labels that are missing, damaged, or illegible. If a component is replaced and it has a safety label on it, apply a safety label to the new component. If a person operates a machine with missing, damaged, or illegible safety labels it puts them at risk of serious injury or death.

W100

This document provides information about the original equipment manufacturer (OEM) components (parts). Always replace a part with the correct OEM part. For service, support, or to order parts, contact your local Wallenstein Equipment dealer or distributor.

Always provide the model and serial number of your Wallenstein product when you order parts, or request service or other information. The model and serial number location is shown in the following illustration.

Record the model and serial number of your product here:

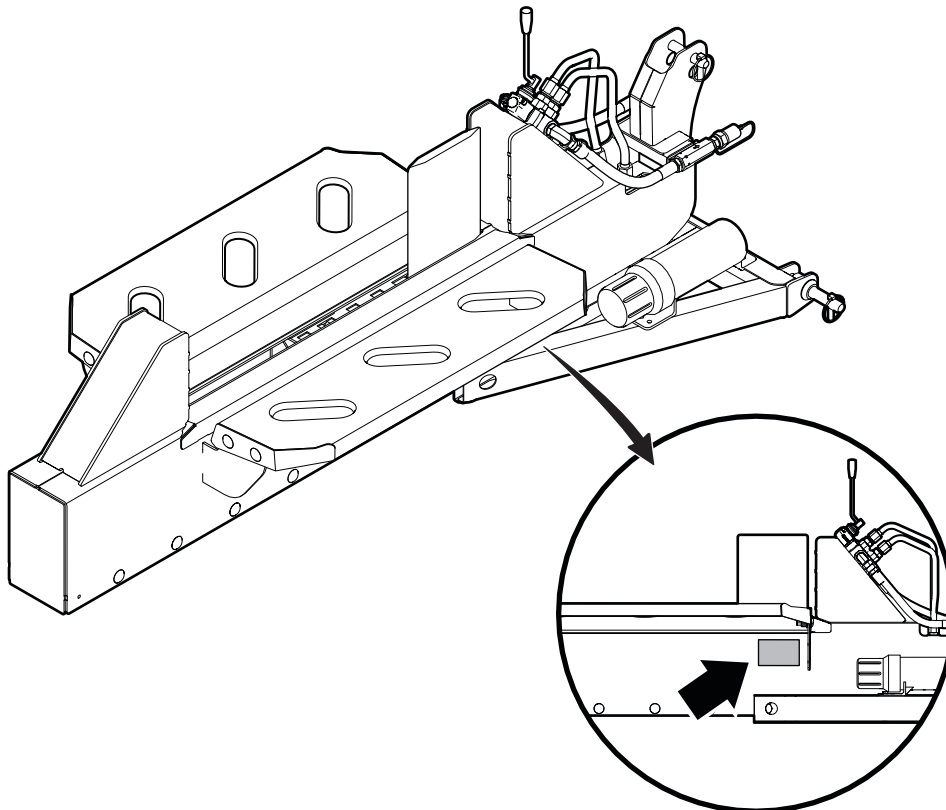
Model	
Serial Number	

The information contained in this document was current at the revision date noted on the bottom of each page. Wallenstein Equipment reserves the right to change product specifications at any time without notice. If your product specifications are different from the information in this document, contact your local dealer or distributor. To find a local dealer or distributor, go to WallensteinEquipment.com and select **Dealer Locator** at the bottom of the page.

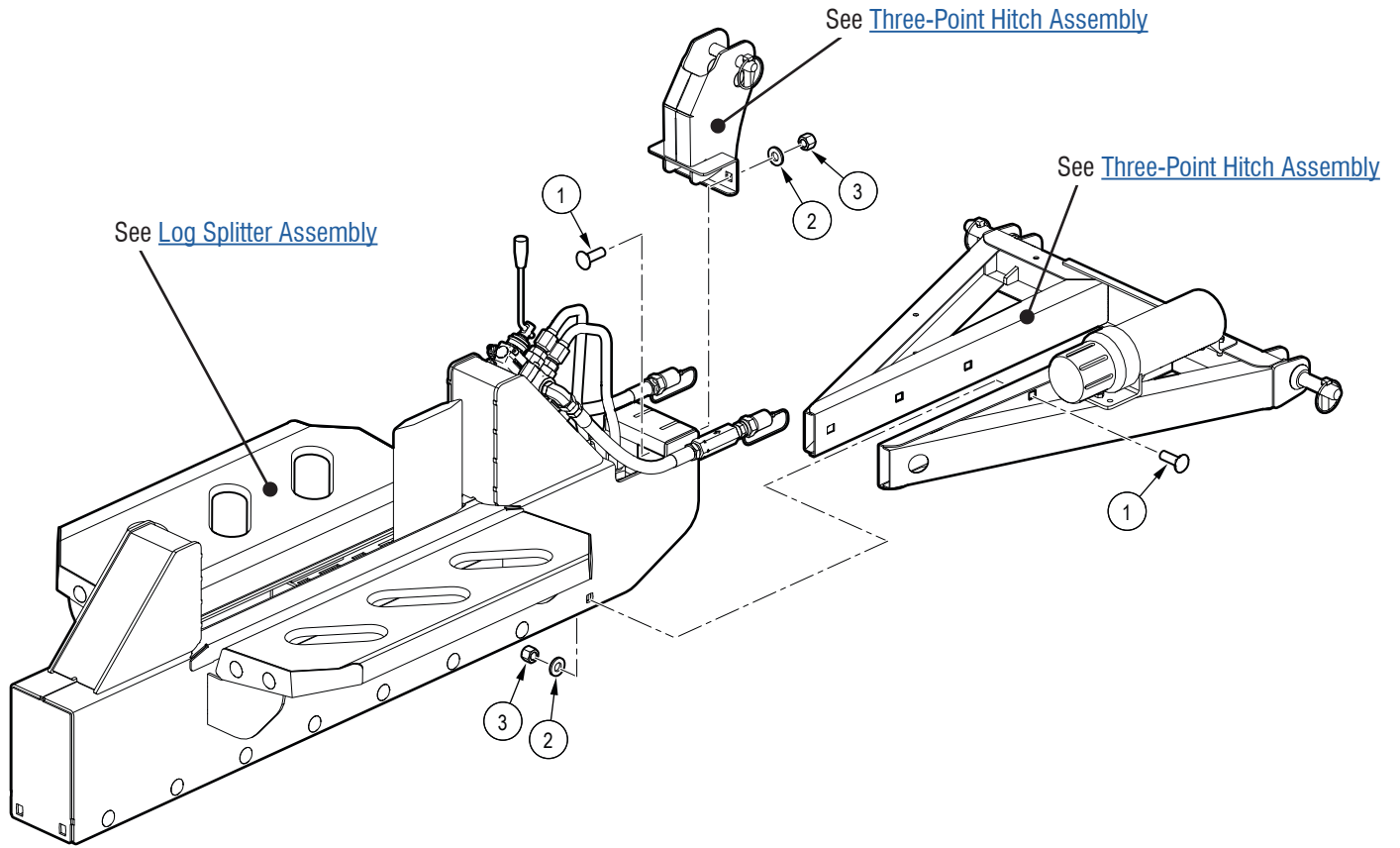
Wallenstein Equipment Inc. • © 2024. All rights reserved.

No part of this work may be copied, reproduced, replaced, distributed, published, displayed, modified, or transferred in any form or by any means except with the prior permission of Wallenstein Equipment Inc.

Model and Serial Number Location

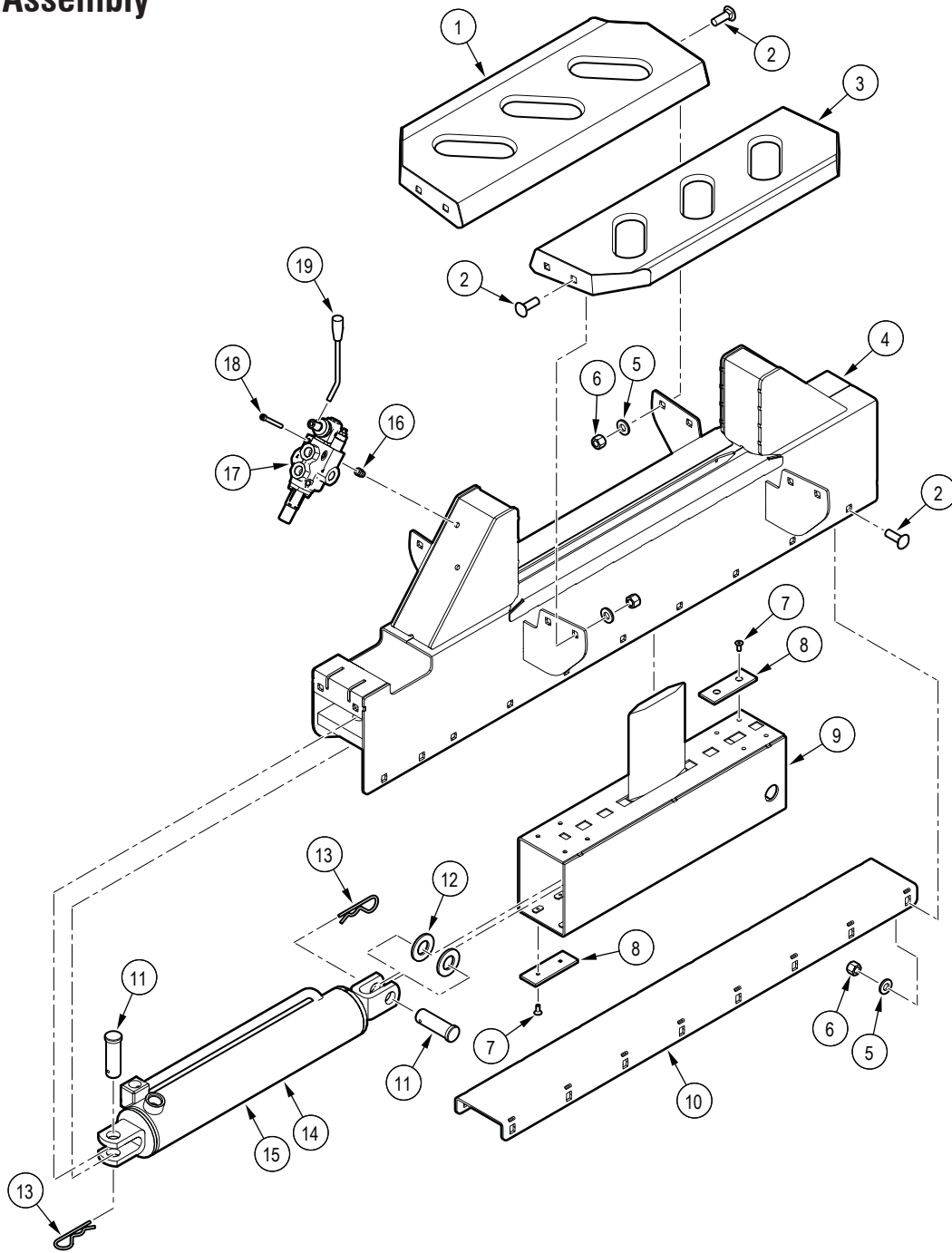


Main Parts



Item	Part number	Description	Quantity
1	Z76251	Carriage Bolt 1/2" NC x 1-1/2"	8
2	Z73151G8	SAE Washer 1/2" Grade 8	8
3	Z72251	Hex Lock Nut 1/2" NC	8

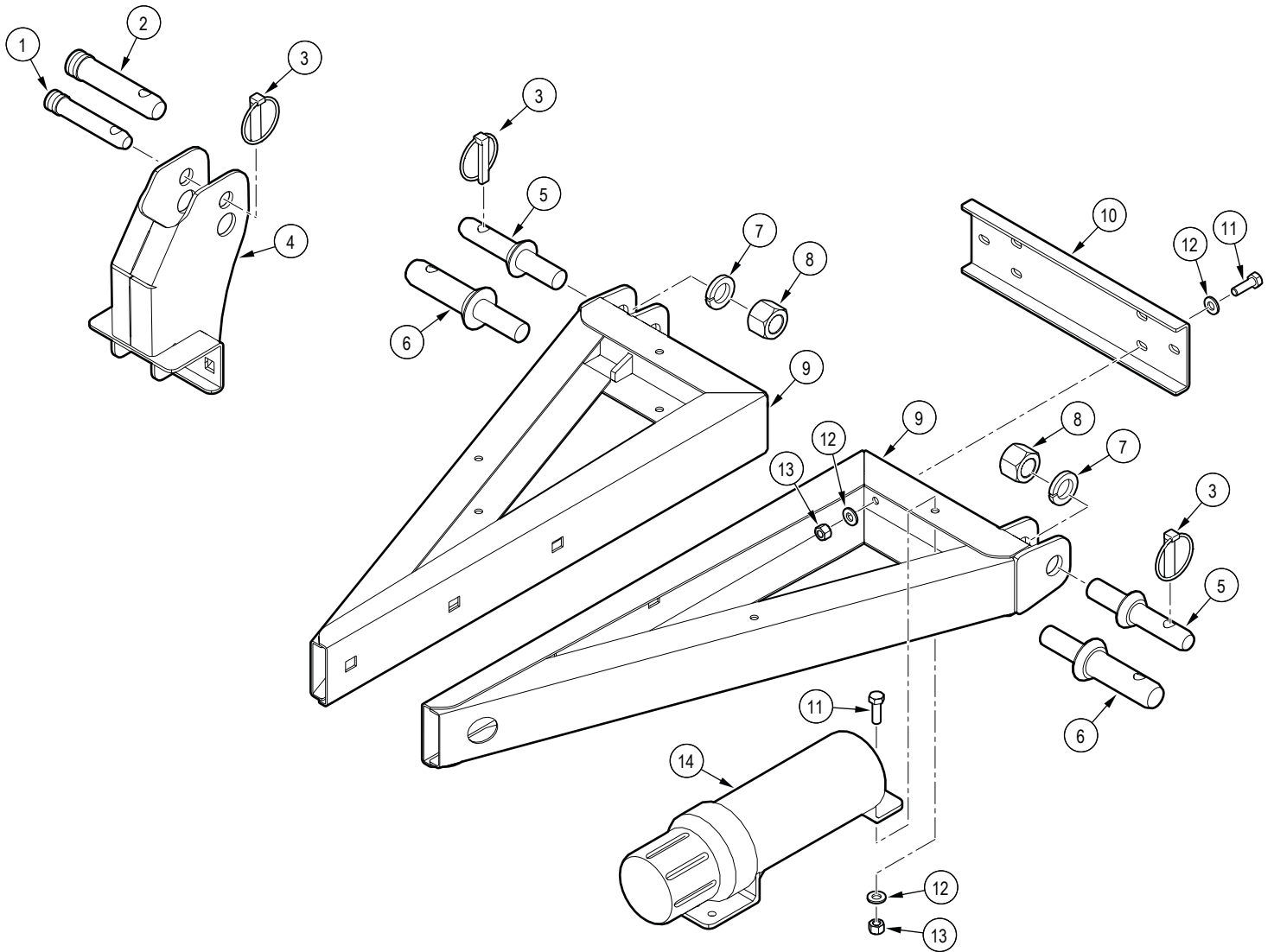
Log Splitter Assembly



Item	Part number	Description	Quantity
1	2074W017	Log Shelf	1
2	Z76251	Carriage Bolt 1/2" NC x 1-1/2"	18
3	2074W018	Log Shelf	1
4	2074W003	Split Bed	1
5	Z73151G8	SAE Washer 1/2" Grade 8	18
6	Z72251	Hex Lock Nut 1/2" NC	18
7	Z75213	FHCS 1/4" NC x 5/8"	16
8	2074S002	Low-Friction Slider	8
9	2074W011	Double-Sided Wedge Assembly	1
10	2074W019	Split-Bed Bottom	1

Item	Part number	Description	Quantity
11	2074M108	Clevis Pin 1144SP 1" x 3"	2
12	Z73191G8	SAE Washer 1" Grade 8	2
13	Z12245	Hitch Pin Clip 11/64" x 3-3/4"	2
14	2074C001	Cylinder 3.5" x 18" x 1-1/4"	1
15	SLK-3515	Cylinder Seal Kit (not shown)	1
16	Z72962	Rivet Nut 1/4" NC x 260	2
17	Z56235	Single Spool Valve Tandem SC 12 gpm	1
18	Z75117	SHCS 1/4" NC x 2-1/4"	2
19	2074M109	40-Degree Handle	1

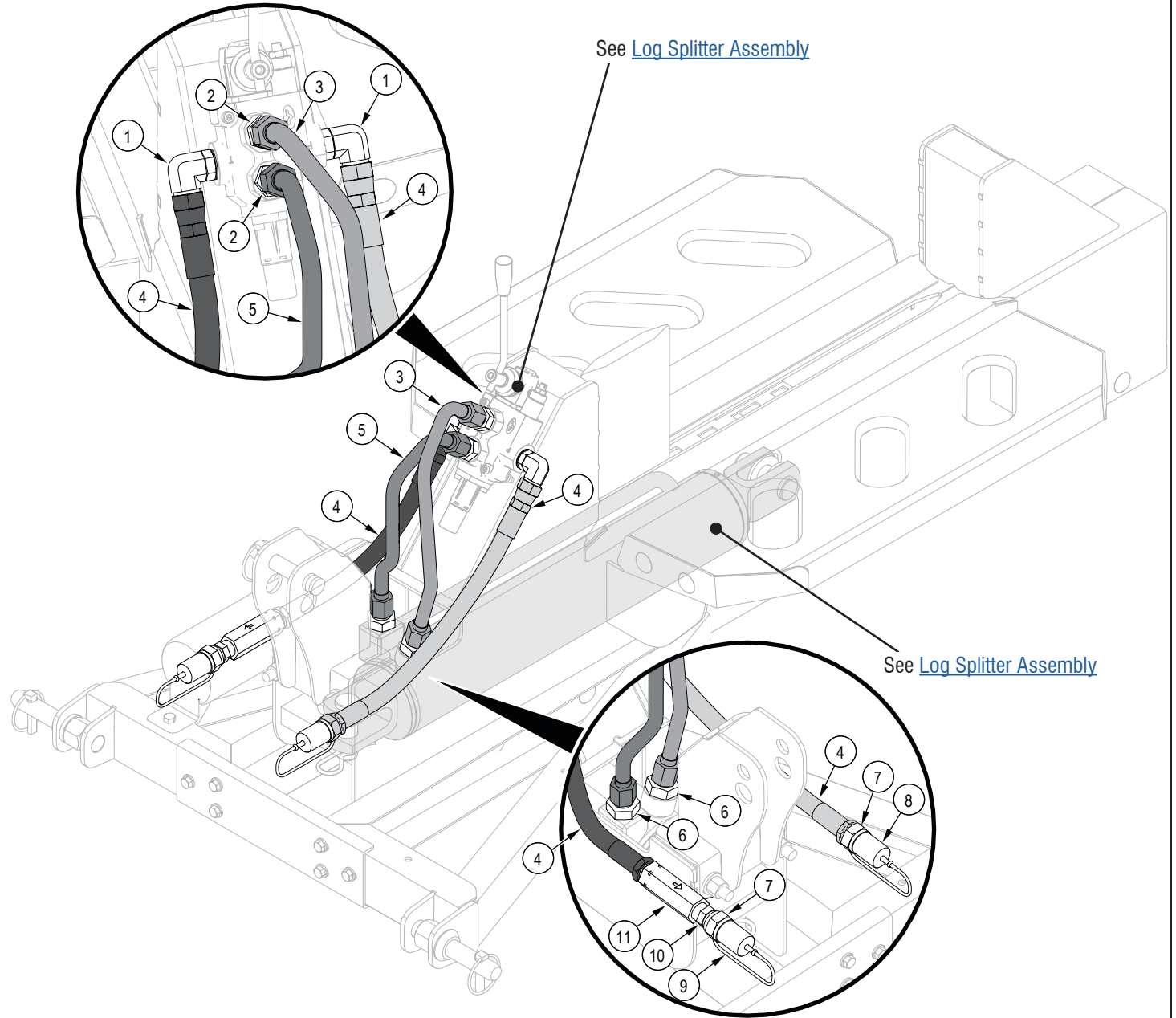
Three-Point Hitch Assembly



Item	Part number	Description	Quantity
1	Z11121	Top Link Pin 3/4" x 2-3/4" (Cat 1)	1
2	Z11141	Top Link Pin 1" x 3-3/16" (Cat 2)	1
3	Z12140	Linchpin 7/16"	3
4	2020W101	Top Link Bracket	1
5	Z11431	Hitch Pin 7/8" x 1-3/4" x 7/8" NF (Cat 1)	2
6	Z11442	Hitch Pin 1-1/8" x 2-1/4" x 7/8" NF (Cat 2)	2
7	Z73381	Spring Washer 7/8"	2

Item	Part number	Description	Quantity
8	Z72282	Hex Lock Nut 7/8" NF	2
9	2020W102	Three-Point Hitch Bracket	2
10	2020L107	Bracket-Spanner Plate	1
11	Z71210	Hex Bolt 5/16" NC x 1"	8
12	Z73122G8	SAE Washer 5/16" Grade 8	14
13	Z72221	Hex Lock Nut 5/16" NC	8
14	Z96503	Document Tube 3-1/2" Short	1

Hydraulic Circuit



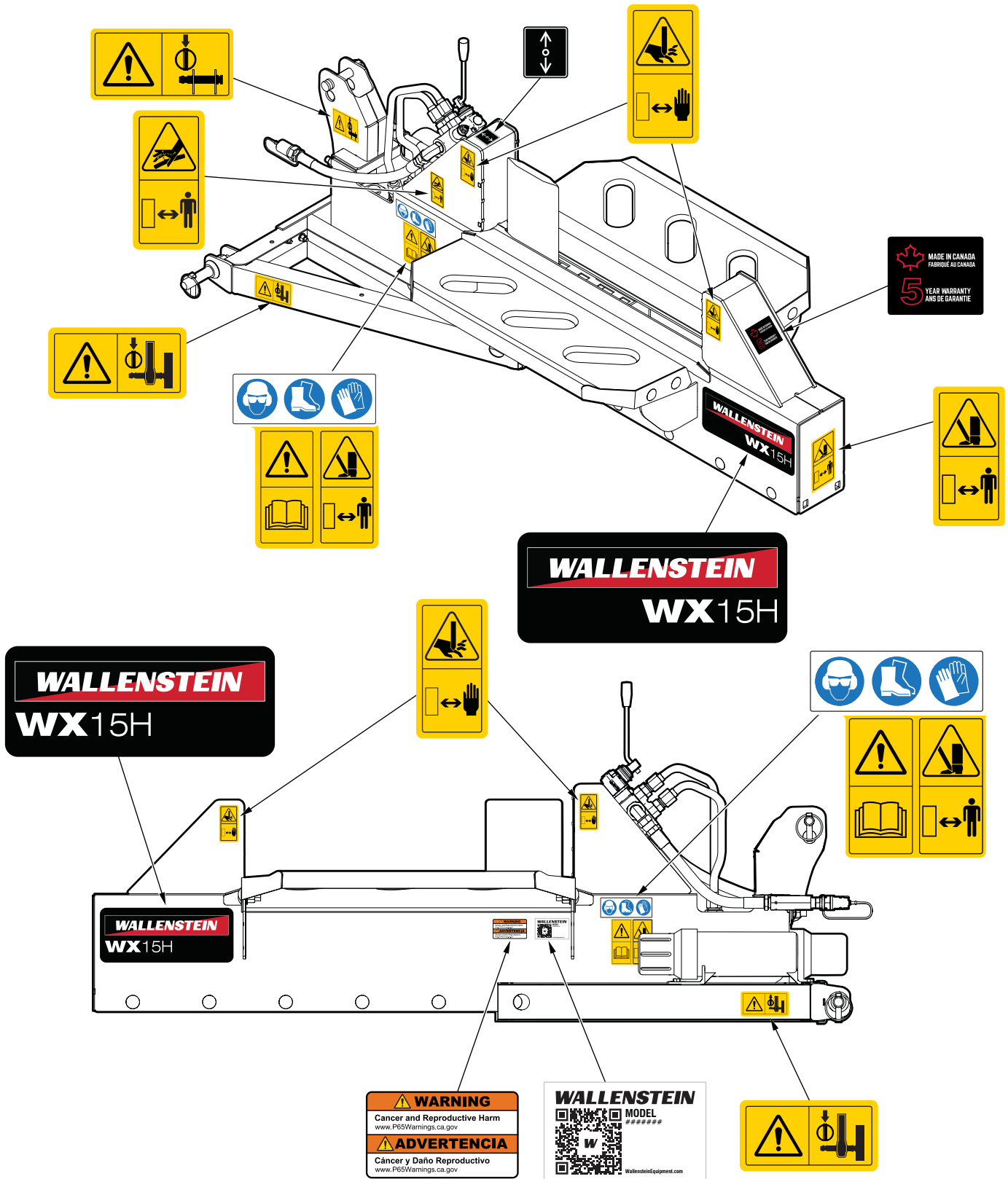
Item	Part number	Description	Quantity
1	Z516510	Elbow 90 degrees MJIC x MORB 1008	2
2	Z516423	Straight MJIC x MORB 1008	2
3	2074F003	Tube 5/8" FJIC10 x FJIC10	1
4	2020F101	Hose 1/2" FJIC10 x MP08 X 60" SC	2
5	2074F001	Tube 5/8" FJIC10 x FJIC10	1
6	Z516422	Straight MJIC x MORB 1012	2

Item	Part number	Description	Quantity
7	Z51926	Quick Coupler FP08 x M ISO 5675 IRV	2
8	Z52831	Cap ISO 7241-1 x Red	1
9	Z52832	Cap ISO 7241-1 x Black	1
10	Z51122	Straight MP x MP 0808	1
11	Z56102	Check Valve FP08 x OPSI	1

Label Locations

IMPORTANT! If you replace a part that has a safety label on it, you must apply a new safety label. Immediately replace safety labels that are damaged, have been removed, or are illegible.

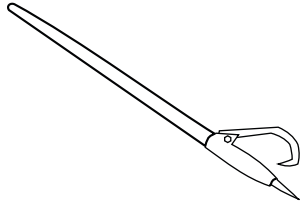
Contact your local Wallenstein Equipment dealer or distributor to order a safety label kit. Labels are not sold individually.



Accessories

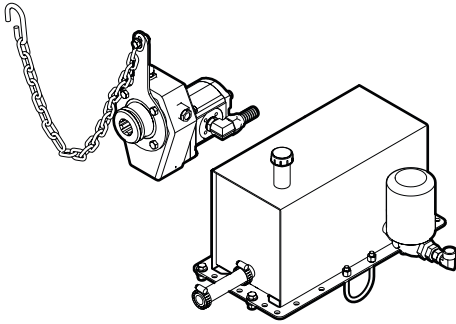
For price and availability, contact your local Wallenstein dealer or go to WallensteinEquipment.com.

For accessory installation instructions, go to WallensteinEquipment.com. On the **Menu** select **Support**, and then select **Accessories**.



48" log peavy Z99001

Use a log peavy to move logs and prevent injury to your hands.



PTO pump kit W4181

A power take-off (PTO) pump is necessary if your tractor does not have a remote hydraulic connection or has limited hydraulic capability and cannot provide hydraulic fluid flow of 11 gpm.

The PTO pump kit includes a hydraulic pump that connects to the PTO shaft, a hydraulic fluid tank with return hose, hydraulic fittings, and fasteners.



All weather log splitter cover W4204

Heavy duty industrial material, made in Canada. Protects your log splitter from harsh elements.

Bolt Torque

IMPORTANT! If you replace hardware, use fasteners of the same grade.

IMPORTANT! The torque specifications in these tables are for non-greased or non-oiled threads. Do not grease or oil fastener threads unless otherwise indicated. When using a thread lock, increase the specified torque 5%.



Bolt grades are identified by the marks on the bolt head.

The bolt torque specification tables provide the correct torque settings for common bolts and capscrews. Tighten all bolts to the torque that is specified in the table, unless otherwise indicated. Check the bolt tightness periodically.

Imperial Bolt Torque Specifications

Bolt Diameter	Torque					
	SAE Gr. 2		SAE Gr. 5		SAE Gr. 8	
	lbf•ft	N•m	lbf•ft	N•m	lbf•ft	N•m
1/4 inch	6	8	9	12	12	17
5/16 inch	10	13	19	25	27	36
3/8 inch	20	27	33	45	45	63
7/16 inch	30	41	53	72	75	100
1/2 inch	45	61	80	110	115	155
9/16 inch	60	95	115	155	165	220
5/8 inch	95	128	160	215	220	305
3/4 inch	165	225	290	390	400	540
7/8 inch	170	230	420	570	650	880



SAE Gr. 2



SAE Gr. 5



SAE Gr. 8

Metric Bolt Torque Specifications

Bolt Diameter	Torque			
	Gr. 8.8		Gr. 10.9	
	lbf•ft	N•m	lbf•ft	N•m
M3	0.4	0.5	1.3	1.8
M4	2.2	3	3.3	4.5
M6	7	10	11	15
M8	18	25	26	35
M10	37	50	52	70
M12	66	90	92	125
M14	83	112	116	158
M16	166	225	229	310
M20	321	435	450	610
M30	1,103	1,495	1,550	2,100



8.8



10.9

Hydraulic Fitting Torque

Tighten flare-type tube fittings:

1. Check the flare and flare seat for defects that might cause leaks.
2. Align the tube with the fitting before tightening.
3. Hand-tighten the swivel nut until it is snug.
4. To prevent the tube from twisting, use two wrenches. Place one wrench on the connector body and tighten the swivel nut with the second wrench. Torque the fitting to the correct specification.

If a torque wrench is not available, use the flats from finger tight (FFFT) method.

Hydraulic Fitting Torque Specifications					
Tube size OD	Hex size across flats	Torque		Flats from finger tight	
		Inches	Inches	lbf•ft	N•m
3/16	7/16	6	8	2	1/6
1/4	9/16	11–12	15–17	2	1/6
5/16	5/8	14–16	19–22	2	1/6
3/8	11/16	20–22	27–30	1-1/4	1/6
1/2	7/8	44–48	59–65	1	1/6
5/8	1	50–58	68–79	1	1/6
3/4	1-1/4	79–88	107–119	1	1/8
1	1-5/8	117–125	158–170	1	1/8

Specifications are for non-lubricated connections.



MAKING WORK FEEL MORE LIKE PLAY™

WallensteinEquipment.com

