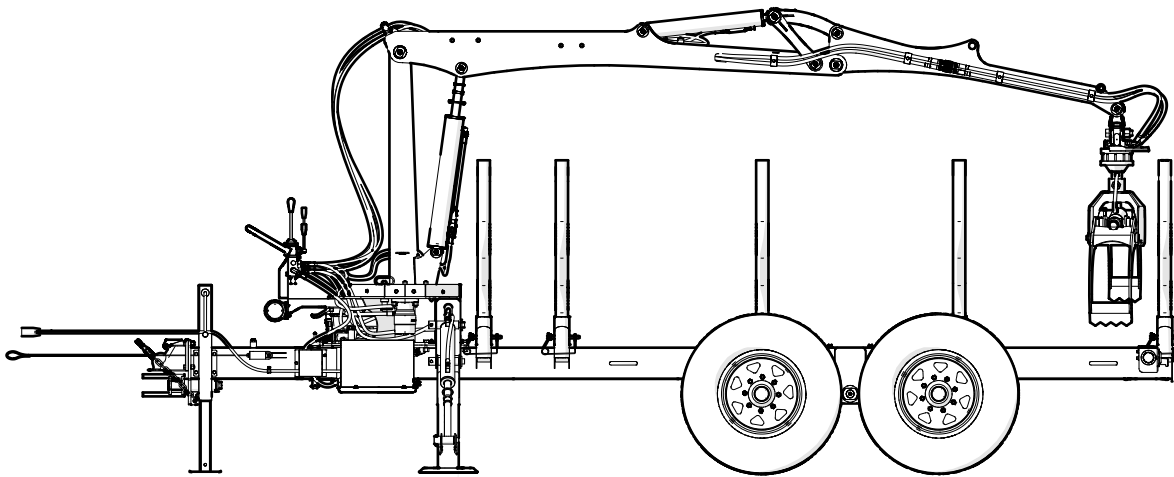


PARTS MANUAL

S/N 2E9US1115N5060128 to 2E9US1115N5060190

LXT115 Log Trailer and Boom



Foreword

This Wallenstein parts manual is prepared to assist customers in ordering quality OEM replacement parts.

Regular maintenance combined with replacing old, worn or broken parts with the correct OEM parts is essential in prolonging the life of your Wallenstein product. Refer to this manual to identify replacement parts.

To order parts, contact your Wallenstein dealer or distributor. Have the product model and serial number handy.

If your dealer is no longer available, please go to our website: <http://wallensteinequipment.com> and click on the [Dealer Locator](#) to find the nearest dealer.

All information contained in this parts manual is current as per the revision date at the bottom of the page. Wallenstein reserves the right to change product specifications at any time without notice.

If your product specifications differ from those contained in this manual, contact Wallenstein for current information.

Reproduction of information in this parts manual is prohibited without prior written permission from Wallenstein Equipment Inc.

Wallenstein Equipment Inc. • © 2022

WARNING!

Refer to the operators manual for safe operation and maintenance.

Maintenance should be performed by trained personnel only.

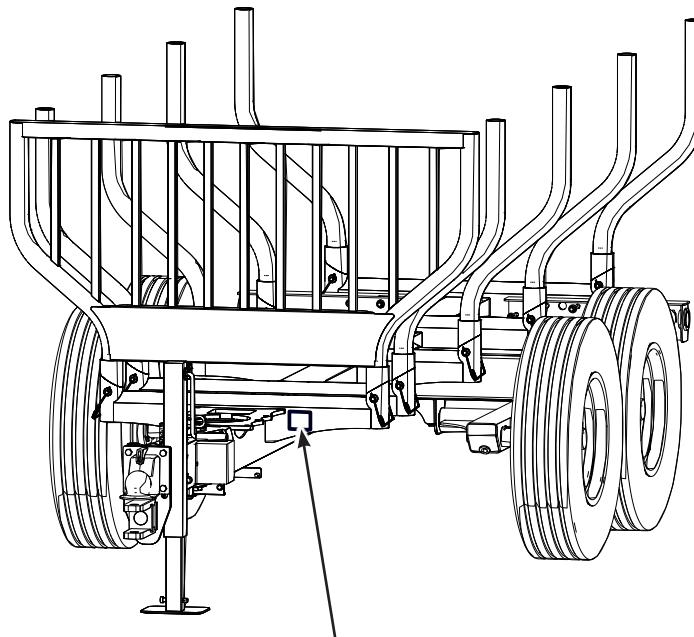
Serial Number Location

Always provide the model and serial number of your Wallenstein product when ordering parts or requesting service or other information. This information is found on the product information plate as shown below.

Record your product information here for future reference.

Model _____

Serial Number _____



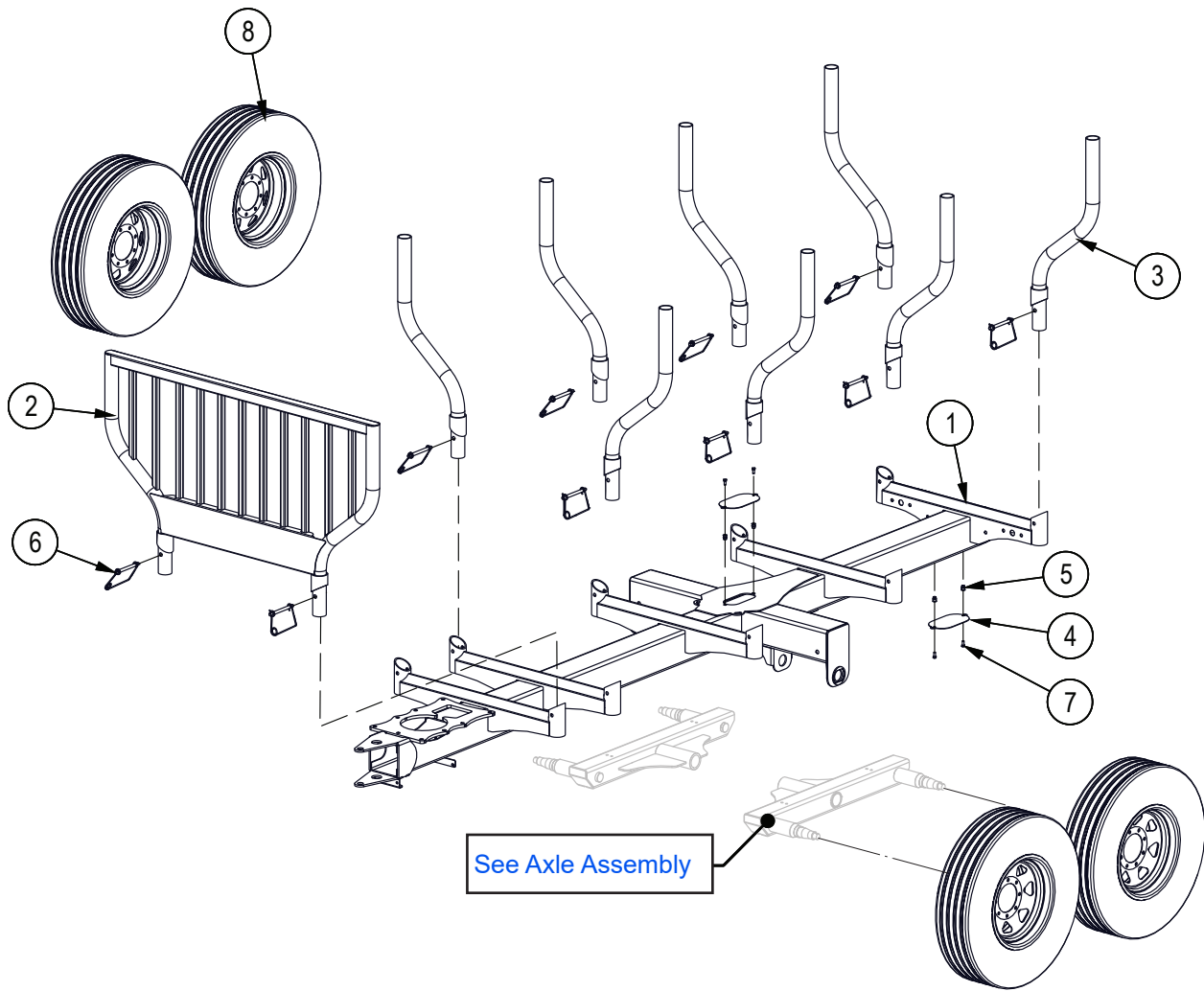
**Model and Serial
Number Location**

www.wallensteinequipment.com

Contents

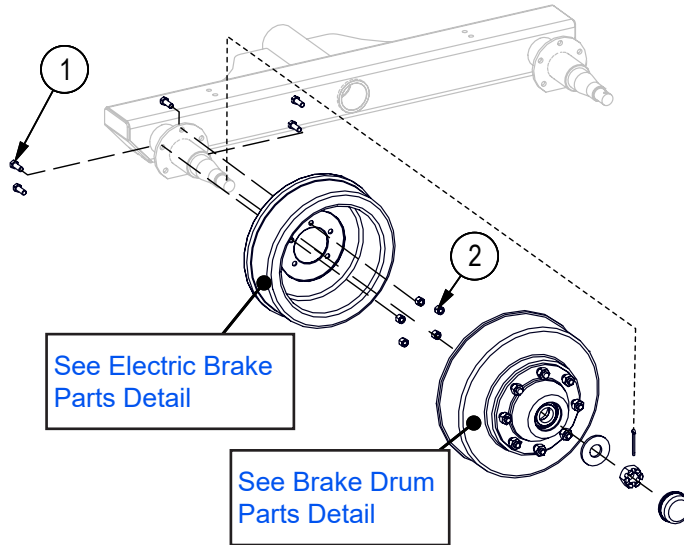
Main Frame Assembly	4
Hub Assembly	5
Axle Assembly S/N 2E9US1119FS060052 – 2E9US1119FS060083	7-A
Axle Assembly S/N 2E9US1119FS060084 & Up	7-B
Tongue Assembly	8
Wiring Harness	9
Hub Assembly	10
Brake Drum Assembly.....	10
Hydraulic Drawbar Option	11
Electric Brake Assembly	12
Hydraulic Drawbar Cylinder.....	12
Power Pack Option Plumbing Diagram	13
Control Console.....	14
Stabilizer Assembly	15
Slew Housing	16
Main Tower	17
Main Boom	18
Dipper Boom	19
Grapple Assembly	20
Outer Fork Assembly.....	21
Power Pack Option	22
Hydraulic Winch Kit.....	23
Hydraulic Winch Control.....	24
Hydraulic Winch Assembly	25
Winch Drum Detail.....	26
Top Cable Detail	27
Main Boom Cylinder	28
Dipper Boom Cylinder.....	28
Stabilizer Cylinder	29
Grapple Cylinder.....	29
Hydraulic Circuit.....	31
Accessories.....	33
Decal Layout	35
Common Bolt Torque Values	37
Hydraulic Fitting Torque Values	38
Wheel Lug Torque Values	38

Main Frame Assembly



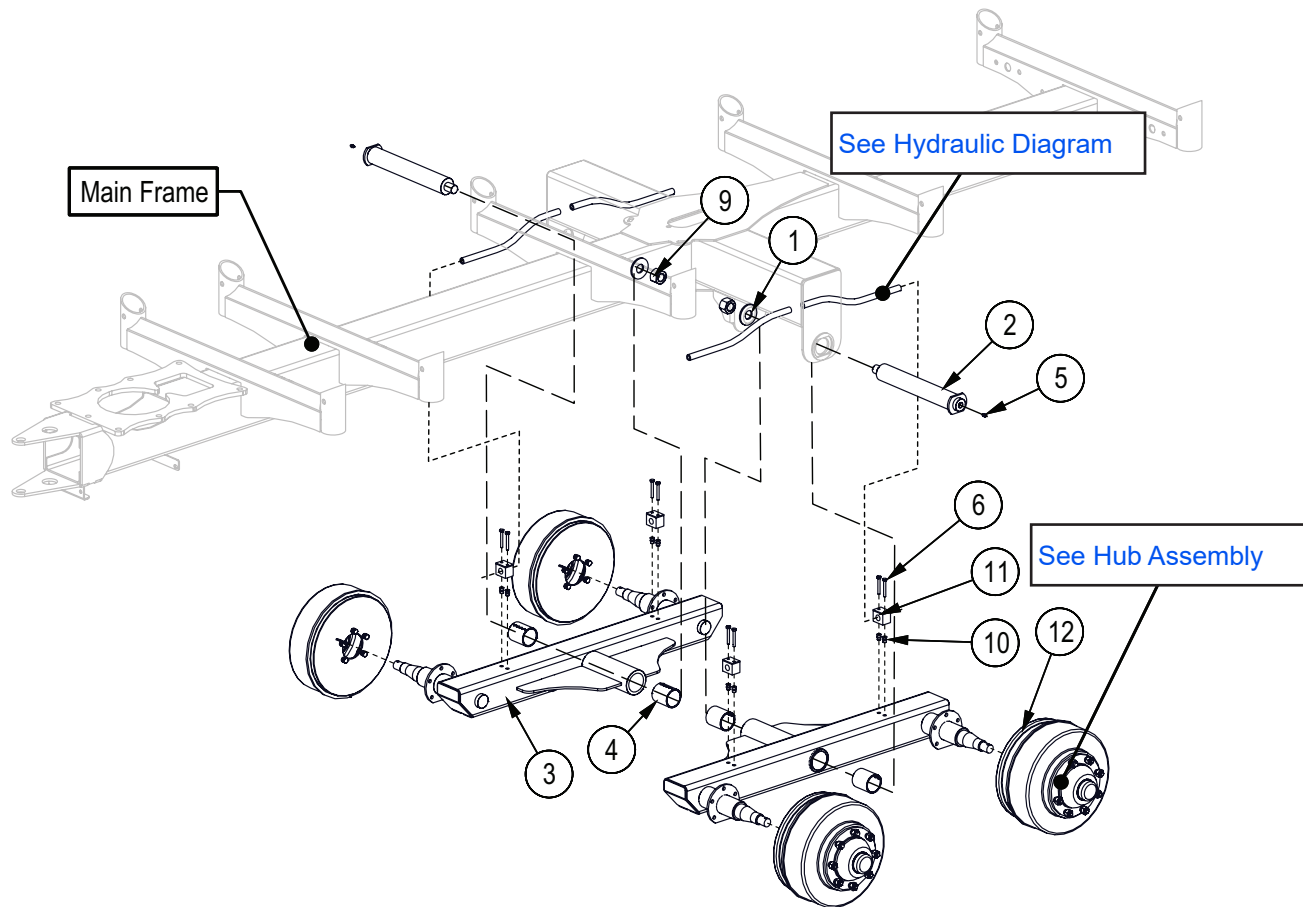
Item No.	Part No.	Description	Qty
1	6052W669	Main Frame	1
2	6052W663	Grill	1
3	6052W664	Bunk Post	8
4	6052L477	Plate, Access Cover	2
5	Z72957	Rivet Nut, 5/16NC x 312	4
6	Z12441	Snap Lock Pin, 1/2" x 4-1/2"	10
7	Z71207	Hex Bolt, 5/16NC x 3/4"	4
8	Z91327	ST235/80R16 LRE Radial Trail 8on6-1/2"	4

Hub Assembly



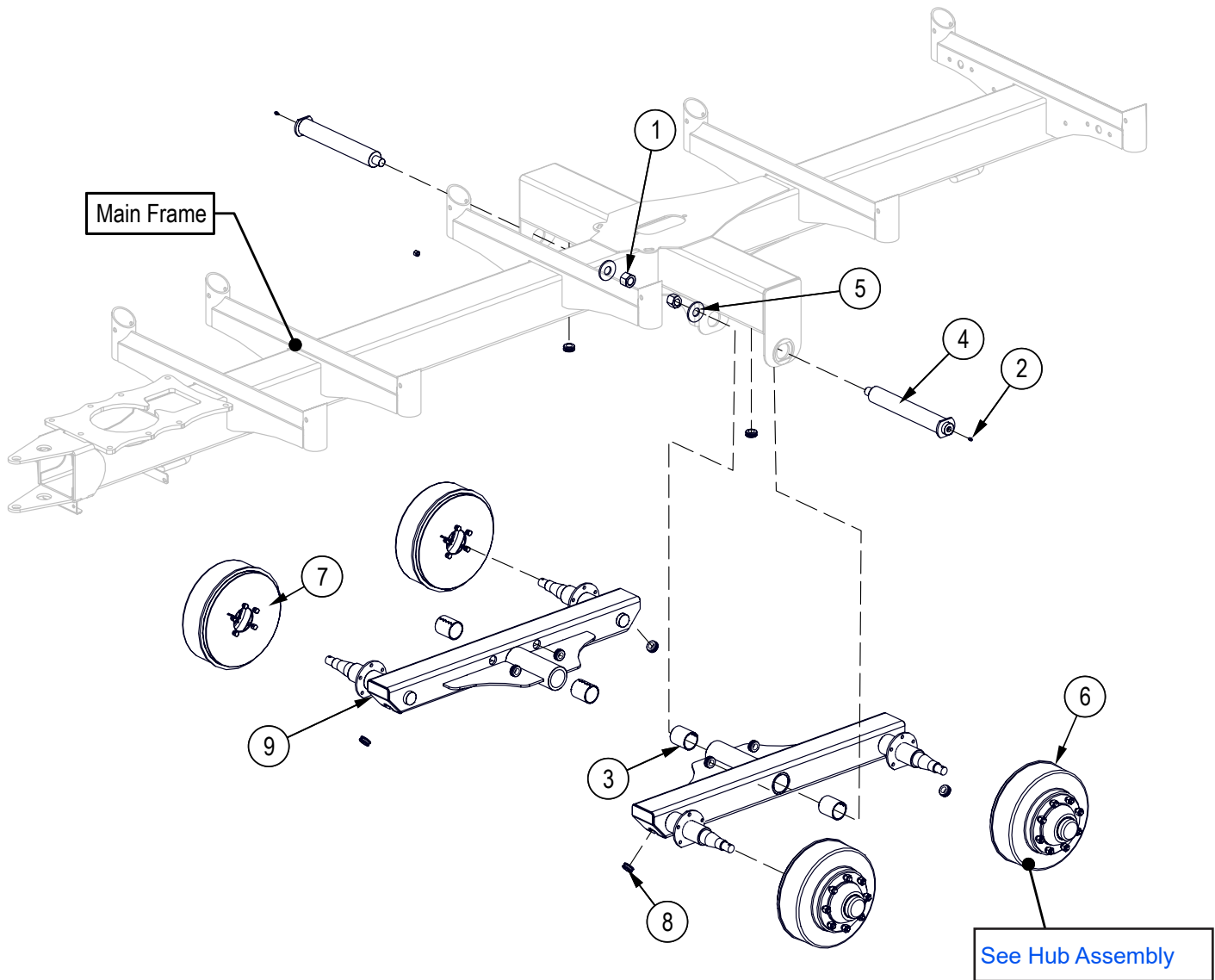
Item No.	Part No.	Description	Qty
1	Z71310	Hex Bolt, 3/8NC x 1"	5
2	Z72231	Hex Lock Nut, 3/8NC	5

Axle Assembly S/N 2E9US1119FS060052 – 2E9US1119FS060083



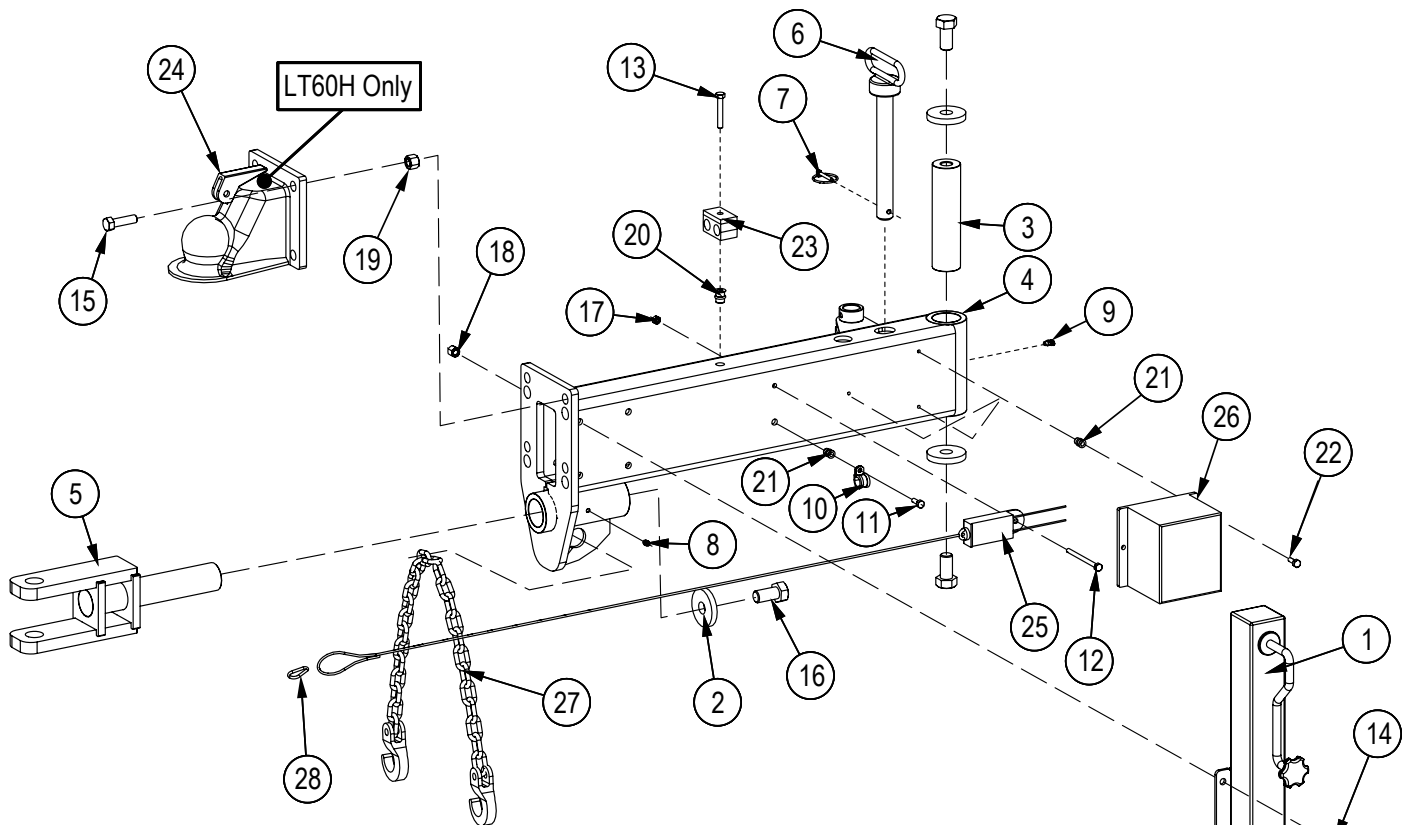
Item No.	Part No.	Description	Qty
1	6052L247	Washer, Axle Pivot	2
2	6052W657	Pin, Axle Main	2
3	6089W370	Highway Rocker Axle	2
4	Z27251	Connex Bushing, 2" ID x 2-1/2" Long x 1/8" Wall	4
5	Z29202	Grease Fitting, 1/4NF	2
6	Z71120	Hex Bolt, 1/4NC x 2"	8
7	Z71310	Hex Bolt, 3/8NC x 1"	20
8	Z72231	Hex Lock Nut, 3/8NC	20
9	Z72292G8	Hex Lock Nut, 1-14NF G8	2
10	Z72962	Rivet Nut, 1/4NC x 260	8
11	Z79454	Single Hose Clamp, 11/16" OD	4
12	Z91702	Electric Brake, 12" x 2" x 3500lbs LH	2

Axle Assembly S/N 2E9US1119FS060084 & Up



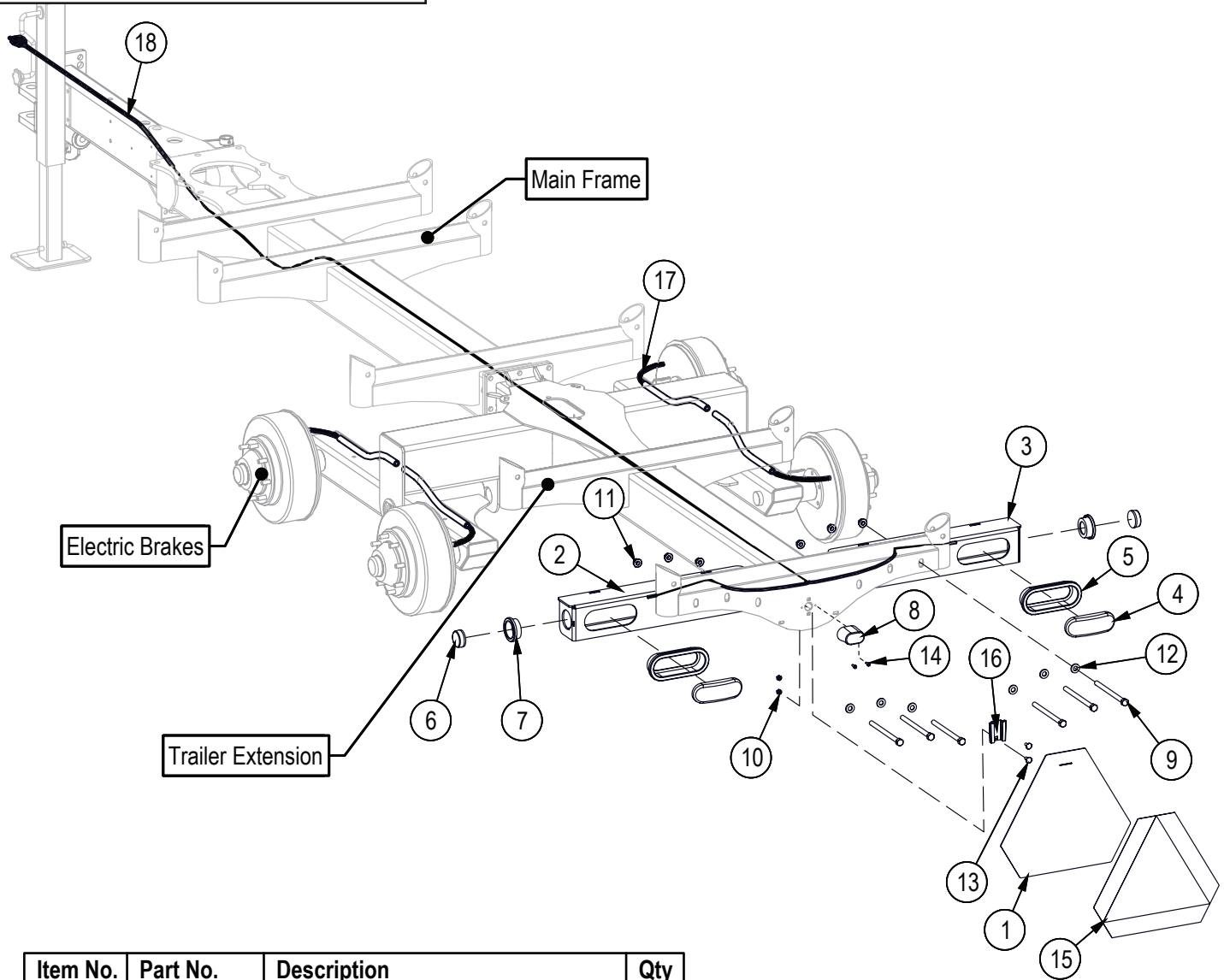
Item No.	Part No.	Description	Qty
1	Z72292G8	Hex Lock Nut, 1-14NF G8	2
2	Z29202	Grease Fitting, 1/4NF	2
3	Z27251	Connex Bushing, 2" ID x 2-1/2" Long x 1/8" Wall	4
4	6052W657	Pin, Axle Main	2
5	6052L247	Washer, Axle Pivot	2
6	Z91702	Electric Brake, 12" x 2" x 3500lbs LH	2
7	Z91712	Electric Brake, 12" x 2" x 3500lbs RH	2
8	Z62818	Rubber Grommet, 3/4" x 3/16"	10
9	6089W370	Highway Rocker Axle	2

Tongue Assembly



Item No.	Part No.	Description	Qty
1	2071W116	Drop Leg Jack Assembly	1
2	6052L227	Washer, Hitch Capture	3
3	6052M215	Pin, Tongue Pivot	1
4	6052W667	Tongue	1
5	6052W668	Hitch	1
6	Z11263	Hitch Pin, 1" x 7-1/2"	1
7	Z12110	Lynch Pin, 3/16"	1
8	Z29202	Grease Fitting, 1/4NF	1
9	Z29203	Elbow 90 Grease Fitting, 1/4NF	1
10	Z62819	Rubberized Wire Clamp, 1/2"	1
11	Z71107	Hex Bolt, 1/4NC x 3/4"	1
12	Z71135	Hex Bolt, 1/4NC x 3-1/2"	1
13	Z71220	Hex Bolt, 5/16NC x 2"	1
14	Z71337	Hex Bolt, 3/8NC x 3-3/4"	4
15	Z71622	Hex Bolt 5/8" NC x 2-1/4"	4
16	Z71782	Hex Bolt, 3/4NF x 1-1/2"	3
17	Z72111	Hex Nut, 1/4NC	1
18	Z72231	Hex Lock Nut, 3/8NC	4
19	Z72261	Hex Lock Nut, 5/8NC	4
20	Z72957	Rivet Nut, 5/16NC x 312	1
21	Z72962	Rivet Nut, 1/4NC x 260	4
22	Z71110	Hex Bolt, 1/4NC x 1"	3
23	Z79463	Double Hose Clamp, 11/16" OD	1
24	Z91618	Hitch Coupler, 2-5/16" Ball x 12000lbs	1
25	Z91726-1	Breakaway Safety Switch for Z91726	1
26	Z91726-2	Battery Pack for Z91726	1
27	Z92309	Safety Chain, 1/4" x 5ft Heavy Duty w/2 Grab Hooks	1
28	Z92303-2	Safety Snap, 3-5/8" x 293lbs	1

Wiring Harness



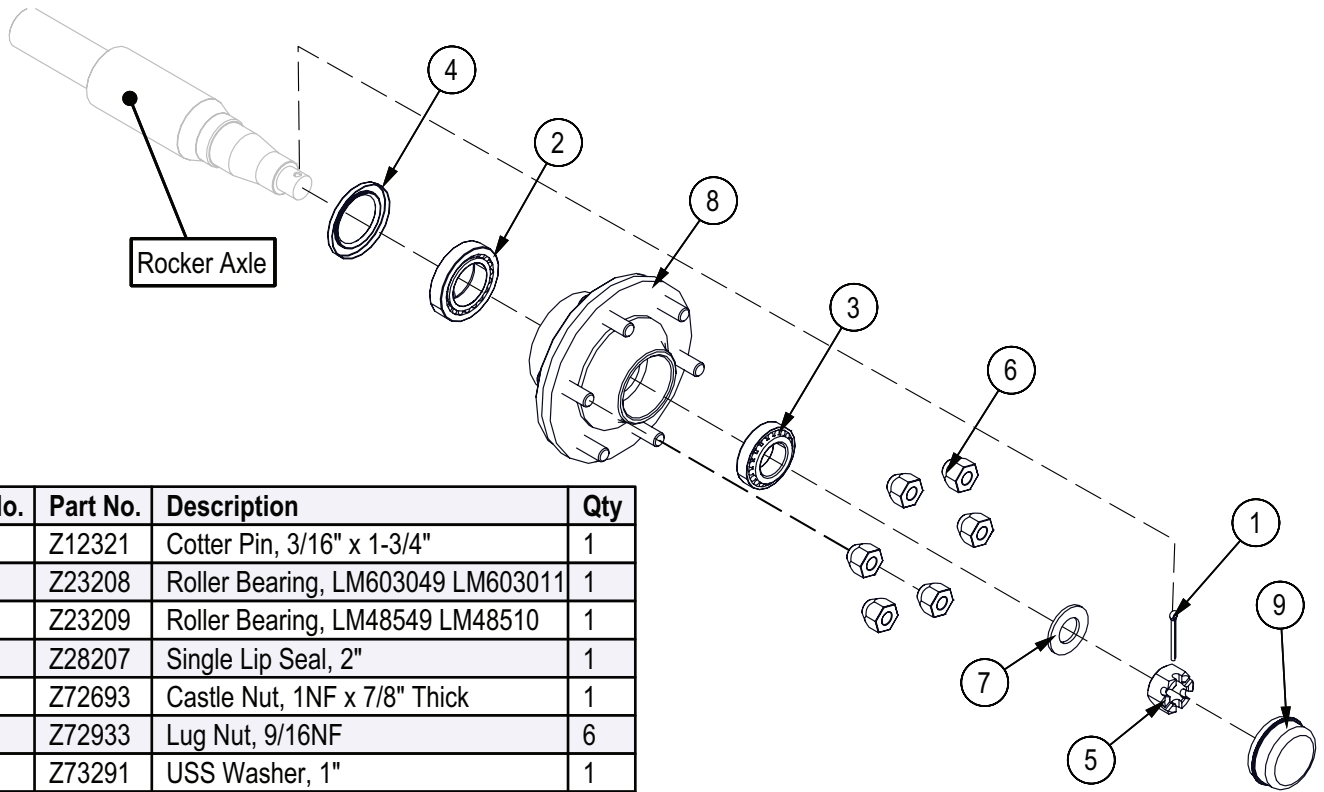
Item No.	Part No.	Description	Qty
1	6050W163	SMV Bracket	1
2	6089W372	Light Bracket, LH	1
3	6089W372H	Light Bracket, RH	1
4	Z61102	STT Lamp, Oval	2
5	Z61103	Grommet, Oval x Open Back	2
6	Z61201	Marker Lamp, Round x Red	2
7	Z61202	Grommet, Round x Open Back	2
8	Z61301	License Lamp, White	1
9	Z71568	Hex Bolt, 1/2NC x 7"	6
10	Z72121	Hex Nut, 5/16NC	2
11	Z72551	Serrated Flange Locknut, 1/2NC	6
12	Z73151	SAE Washer, 1/2"	6
13	Z76221	Carriage Bolt, 5/16NC x 3/4"	2
14	Z76712	Self-tapping Screw, #10 x 3/4"	2
15	Z94601	Decal, SMV	1
16	Z96603	SMV Socket	1
17	Z62825	Corrugated Split Loom, 3/8 ID x 1/2"	4
18	Z62112	Harness, LT60 Lights	1

IMPORTANT! When assembling or replacing wire harnesses, apply a thin coating of silicone dielectric grease to the harness connectors.

Clean off any corrosion or loose particles, then apply a small amount to the surfaces of the connectors where they meet. The grease helps to stop any possibility of future corrosion.

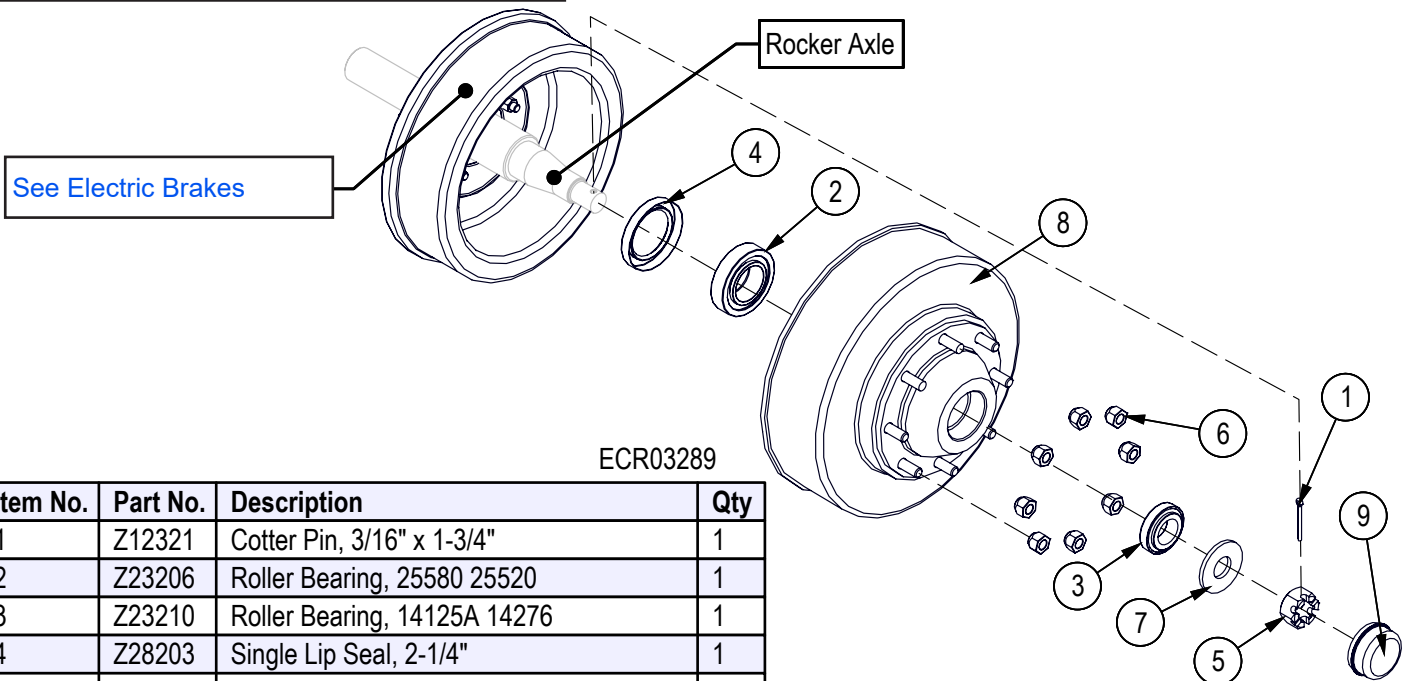
Reassemble the connection. Wipe off any grease that squeezes out.

Hub Assembly



Item No.	Part No.	Description	Qty
1	Z12321	Cotter Pin, 3/16" x 1-3/4"	1
2	Z23208	Roller Bearing, LM603049 LM603011	1
3	Z23209	Roller Bearing, LM48549 LM48510	1
4	Z28207	Single Lip Seal, 2"	1
5	Z72693	Castle Nut, 1NF x 7/8" Thick	1
6	Z72933	Lug Nut, 9/16NF	6
7	Z73291	USS Washer, 1"	1
8	Z91212	Hub, 5000lbs 6on6"	1
9	Z91807	Dust Cap 2.56 Bore	1

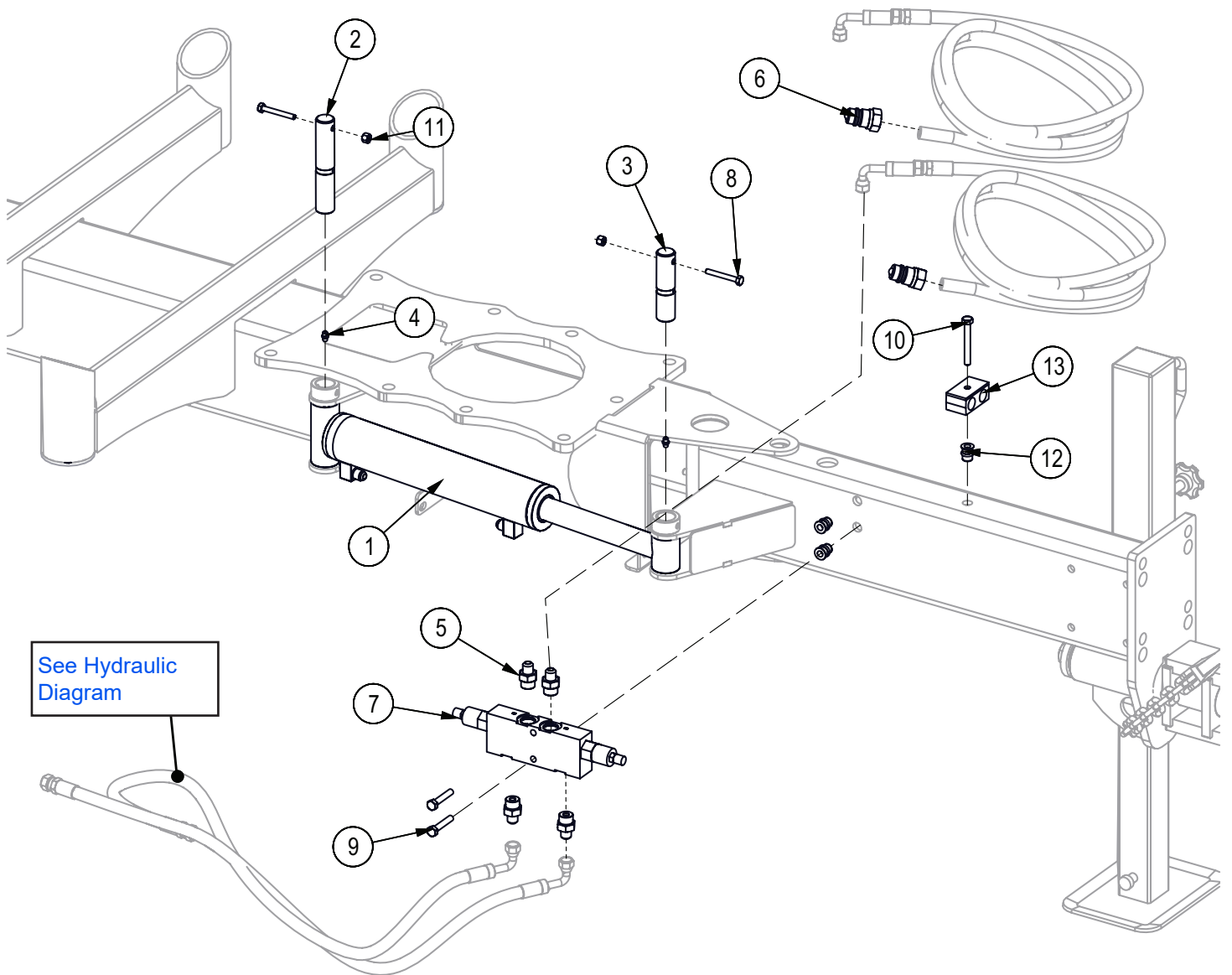
Brake Drum Assembly



ECR03289

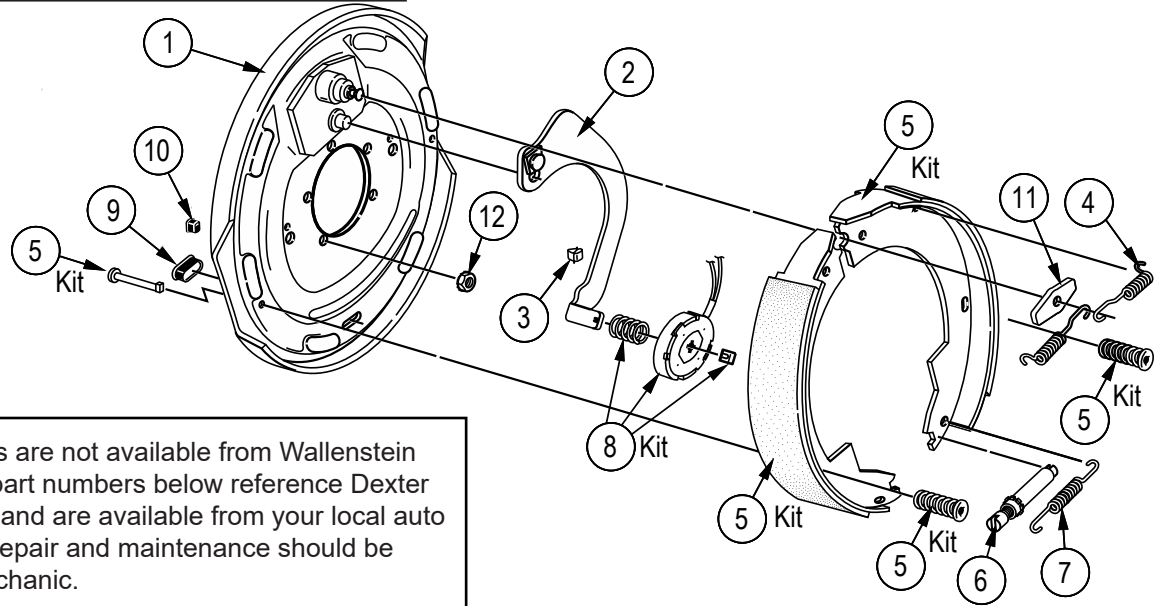
Item No.	Part No.	Description	Qty
1	Z12321	Cotter Pin, 3/16" x 1-3/4"	1
2	Z23206	Roller Bearing, 25580 25520	1
3	Z23210	Roller Bearing, 14125A 14276	1
4	Z28203	Single Lip Seal, 2-1/4"	1
5	Z72693	Castle Nut, 1NF x 7/8" Thick	1
6	Z72931	Lug Nut, 1/2NF	8
7	Z73291	USS Washer, 1"	1
8	Z91710	Brake Drum, 12" x 3500lbs 8on6-1/2" Drum	1
9	Z91808	Dust Cap, 2.70 Bore	1

Hydraulic Drawbar Option



Item No.	Part No.	Description	Qty
1	3011C104	Cylinder, 2" x 9-3/4" Stroke	1
2	6083M350	Pin, Cylinder Mount Long	1
3	6083M351	Pin, Cylinder Mount Short	1
4	Z29202	Grease Zerk 1/4NF	2
5	Z51644	#8ORB x #6JIC	4
6	Z51926	FP08 x Pioneer Coupler	2
7	Z56106	Dual Counterbalance Valve in Body	1
8	Z71120	Hex Bolt, 1/4NC x 2"	2
9	Z71217	Hex Bolt, 5/16NC x 1-3/4"	2
10	Z71225	Hex Bolt, 5/16NC x 2-1/2"	1
11	Z72211	Hex Lock Nut, 1/4NC	2
12	Z72957	Riv-Nut 5/16NC x 312	3
13	Z79463	Double Hose Clamp, 11/16" OD	1

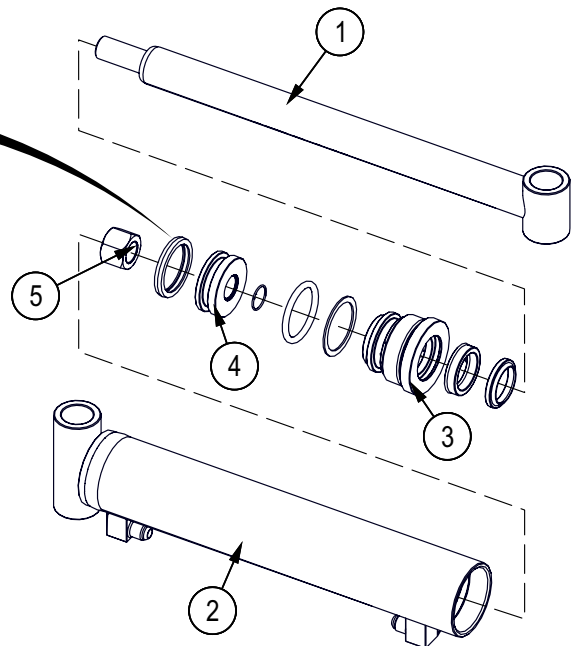
Electric Brake Assembly



Please note brake parts are not available from Wallenstein Equipment Inc. Brake part numbers below reference Dexter Axle brake assemblies and are available from your local auto parts dealer. All brake repair and maintenance should be done by a qualified mechanic.

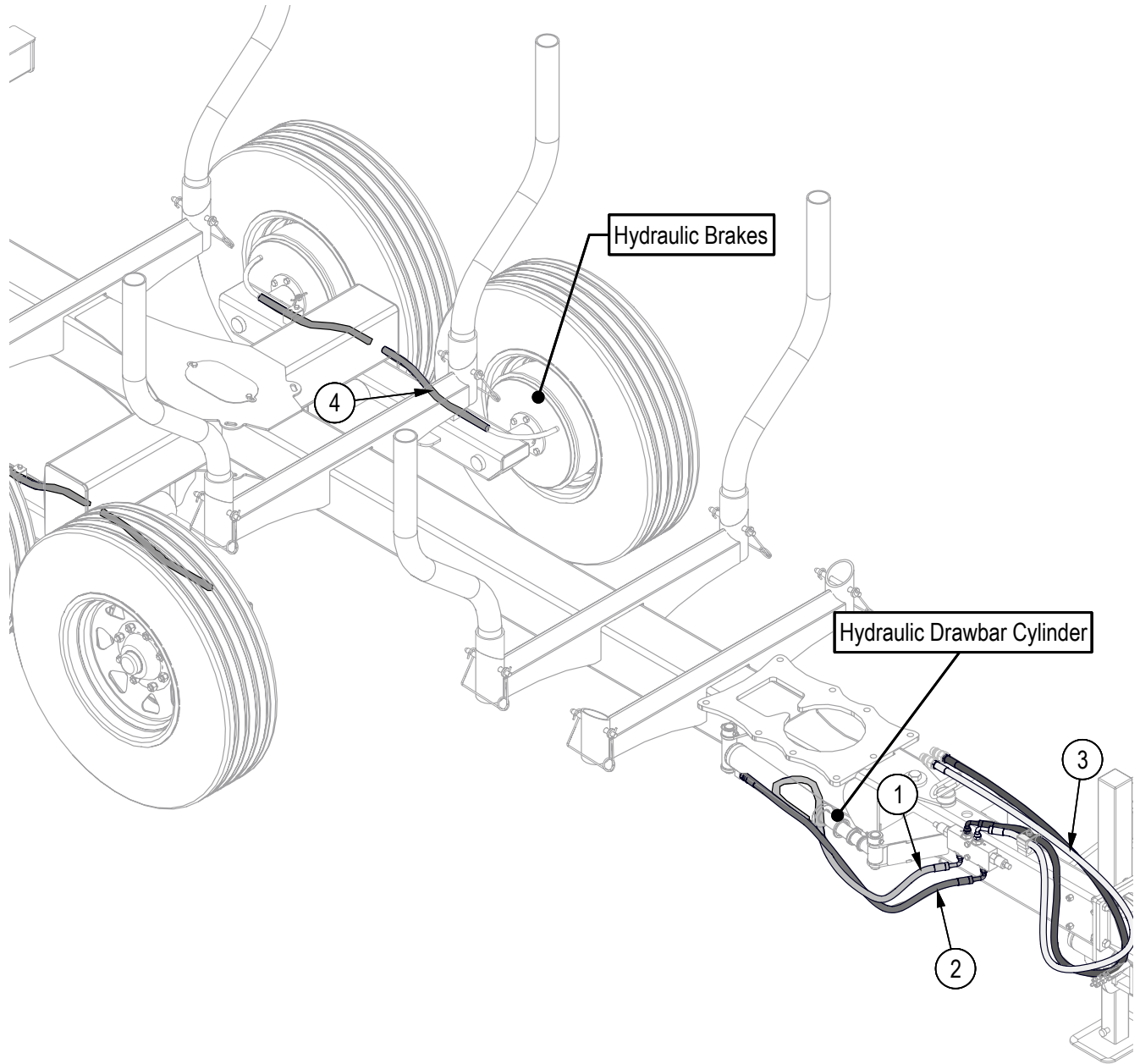
Item	Part No.	Description	Qty	Item	Part No.	Description	Qty
	Z91702	LH Complete Brake Assembly	1	10	K71-105-00	Magnet Kit Contains:	1
	Z91712	RH Complete Brake Assembly (shown)	1			Magnet (white wire)	1
1	036-089-10	Backing Plate Assembly	1			Magnet Clip	1
2	047-107-05	LH Actuating Lever Arm Assembly	1			Magnet Spring	1
2	047-108-05	RH Actuating Lever Arm Assembly	1	11	K71-048-00	Shoe & Lining Kit Contains:	1
3	027-005-00	Wire Clip	2			Primary Shoe & Lining	1
4	046-009-00	Retractor Spring	2			Secondary Shoe & Lining	1
5	043-004-00	Adjuster Assembly	1			Shoe Hold Down Pin #2	2
6	046-018-00	Adjusting Screw Spring	1			Shoe Hold Down Spring & Cup	2
7	046-007-00	Adjuster Slot Plug	2				
8	046-016-00	Wire Grommet	1				
9	005-067-00	Anchor Post Washer	1				

Hydraulic Drawbar Cylinder

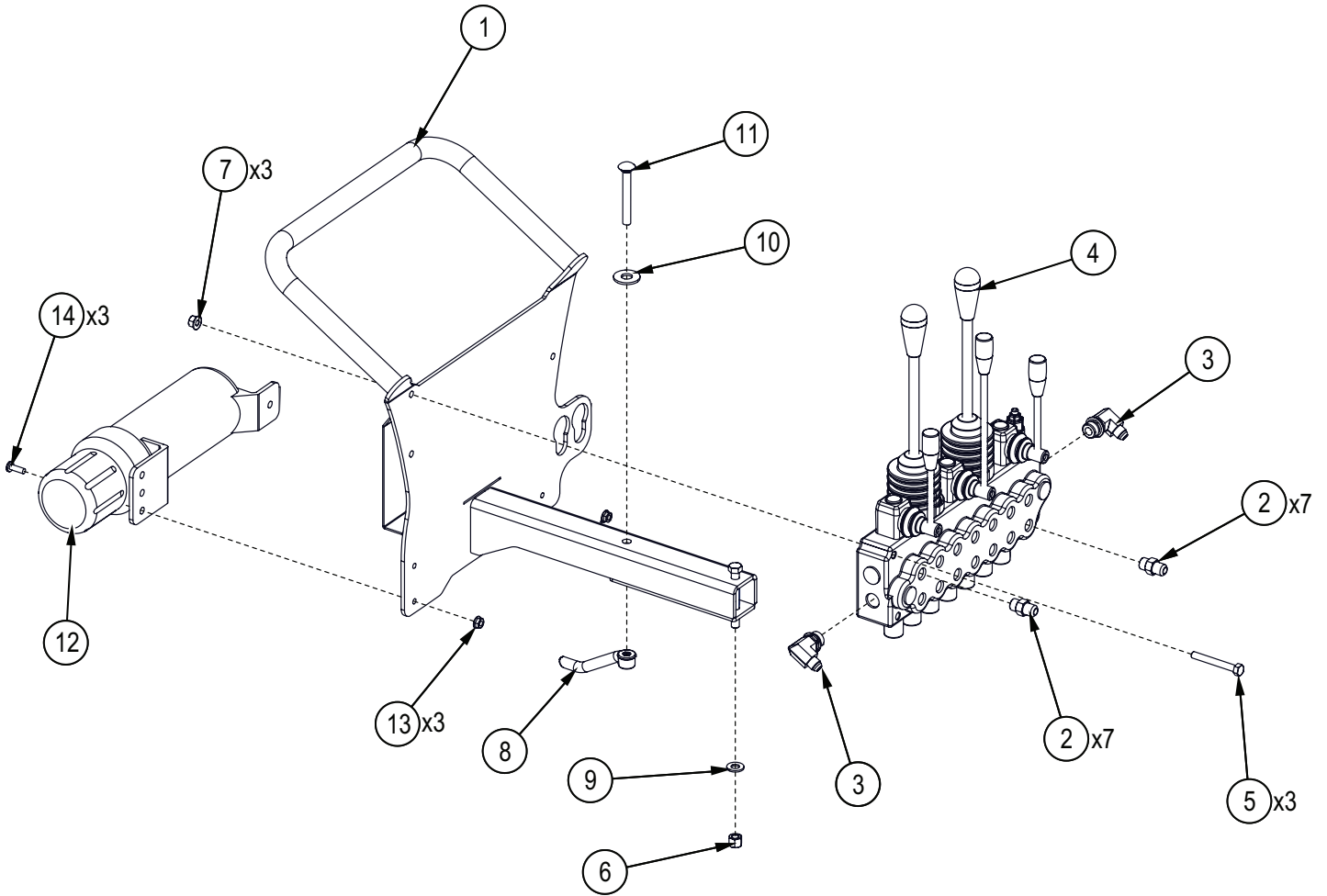


Item No.	Part No.	Description	Qty
1	3011C1043	Rod, 1-1/4	1
2	3011C1044	Barrel, 2" Bore	1
3	G200-125S	2" X 1 1/4" Gland	1
4	P750-200SP	2' Bore Piston	1
5	Z72272G8	Hex Lock Nut 3/4NF G8	1

Power Pack Option Plumbing Diagram

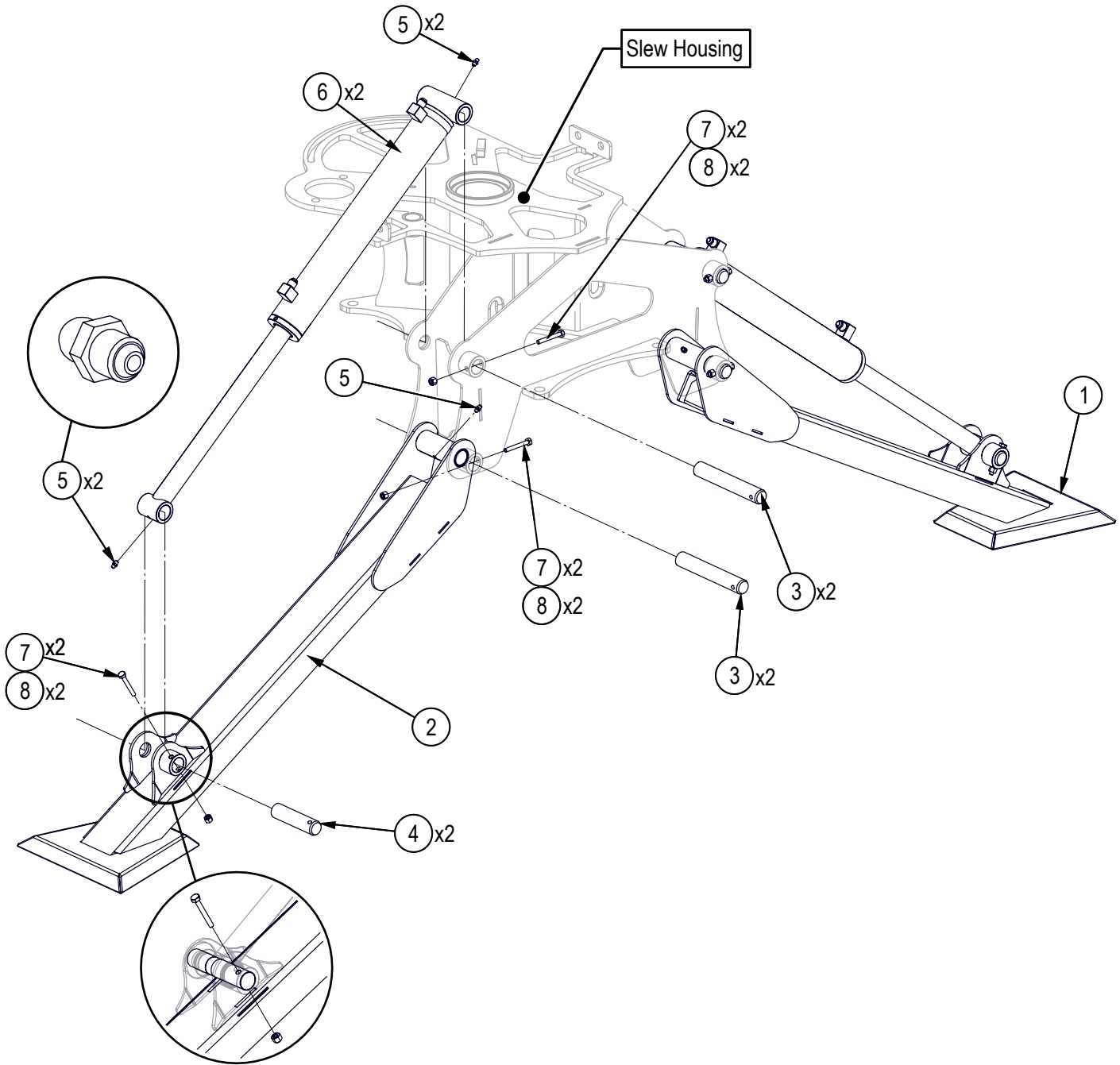


Control Console



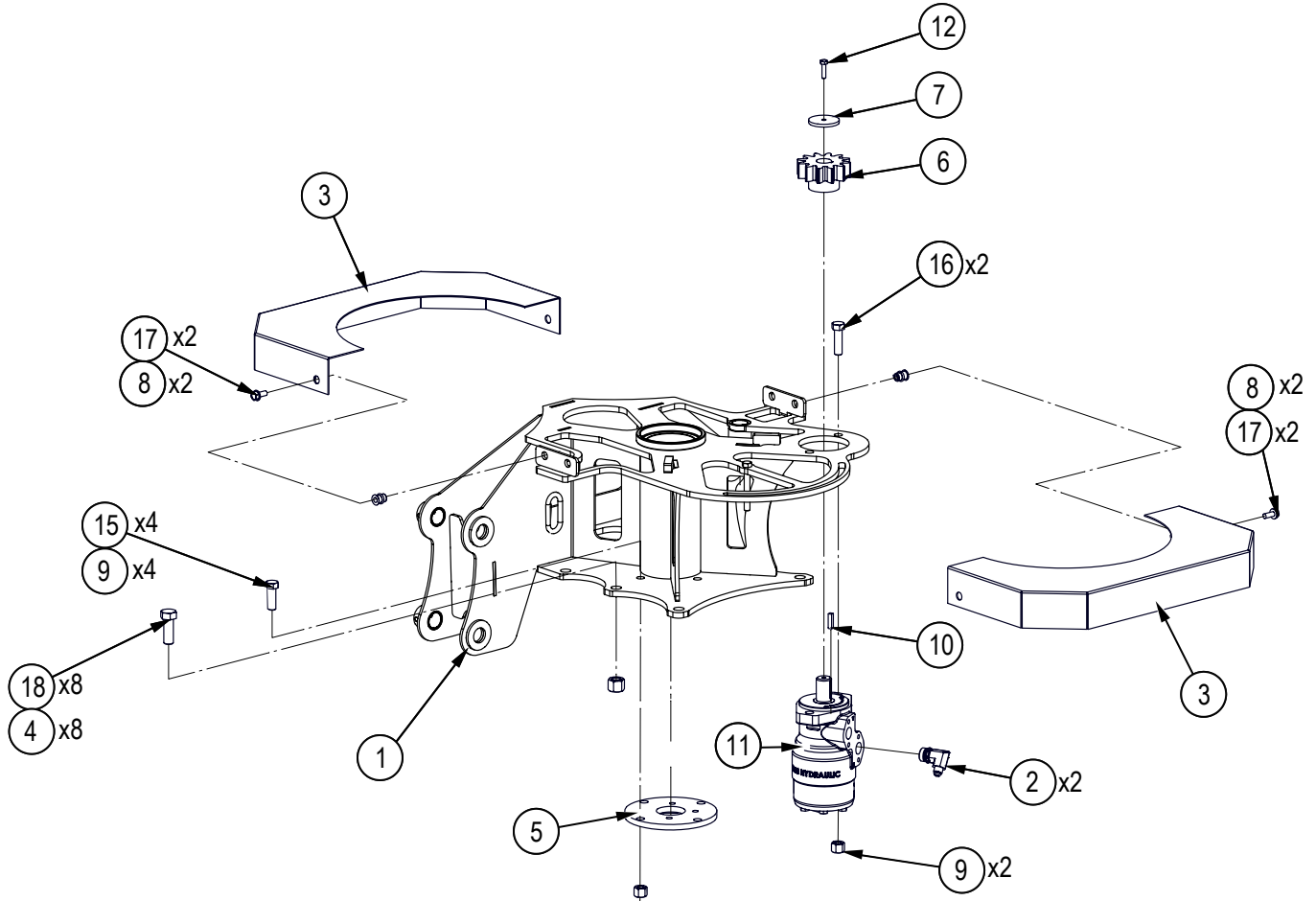
Item No.	Part No.	Description	Qty
1	6030W142	Console Arm	1
2	Z51641	Straight, MJIC x MORB 0606	14
3	Z51655	Elbow 90, MJIC x MORB 0608	2
4	Z56206	Seven Spool Valve, VC x 12GPM	1
5	Z71225	Hex Bolt, 5/16NC x 2-1/2"	3
6	Z72231	Hex Lock Nut, 3/8NC	1
7	Z72521	Serrated Flange Locknut, 5/16NC	3
8	Z72981	Handle Nut, 3/8NC	1
9	Z73131	SAE Washer, 3/8"	1
10	Z73252	PTFE Washer, 1/2" x .101"	1
11	Z76238	Carriage Bolt, 3/8NC x 3"	1
12	Z96503	Manual Tube, 3-1/2" Short	1
13	Z72511	Serrated Flange Locknut, 1/4NC	3
14	Z78301	Machine Screw, 1/4NC x 3/4"	3

Stabilizer Assembly



Item No.	Part No.	Description	Qty
1	6030W130	Stabilizer Arm - LH	1
2	6030W130H	Stabilizer Arm - RH	1
3	6030M488	Pin, Stabilizer Short	4
4	6030M489	Pin, Stabilizer Lift	2
5	Z29202	Grease Fitting, 1/4NF	6
6	6030C754	Cylinder, 2" x 1-1/4" x 13-5/8"	2
7	Z71120	Hex Bolt, 1/4NC x 2"	6
8	Z72211	Hex Lock Nut, 1/4NC	6

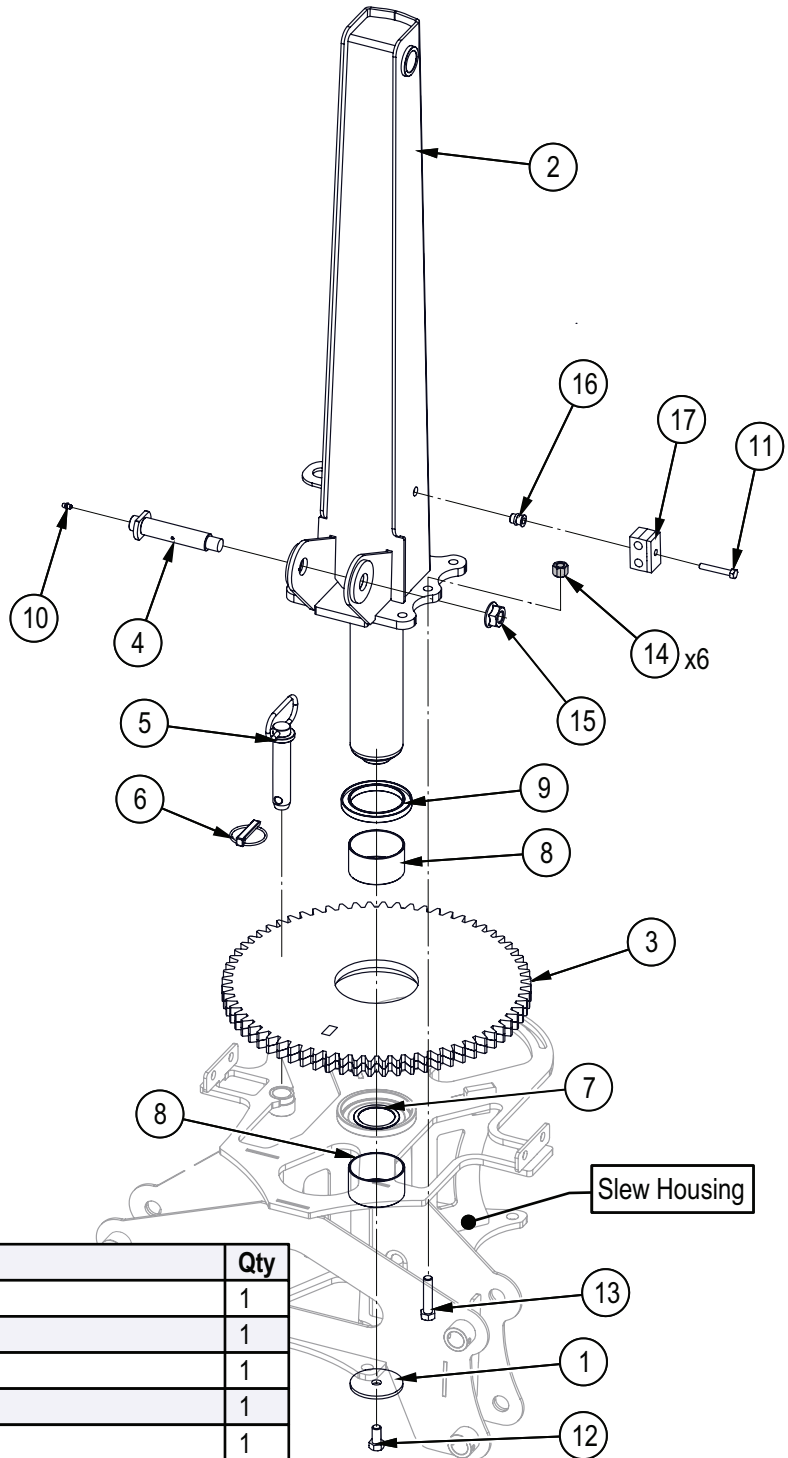
Slew Housing



Item No.	Part No.	Description	Qty
1	6030W101	Slew Housing	1
2	Z51656	Elbow 90, MJIC x MORB 0610	2
3	6030L471	Cover, Slew Sprocket	2
4	Z72261	Hex Lock Nut, 5/8NC	8
5	6030L467	Washer, Boom Rest	1
6	6031M653	Gear, Motor -Small	1
7	6032L592	Washer, Sprocket Capture	1
8	Z72957	Rivet Nut, 5/16NC x 312	4
9	Z72251	Hex Lock Nut, 1/2NC	6

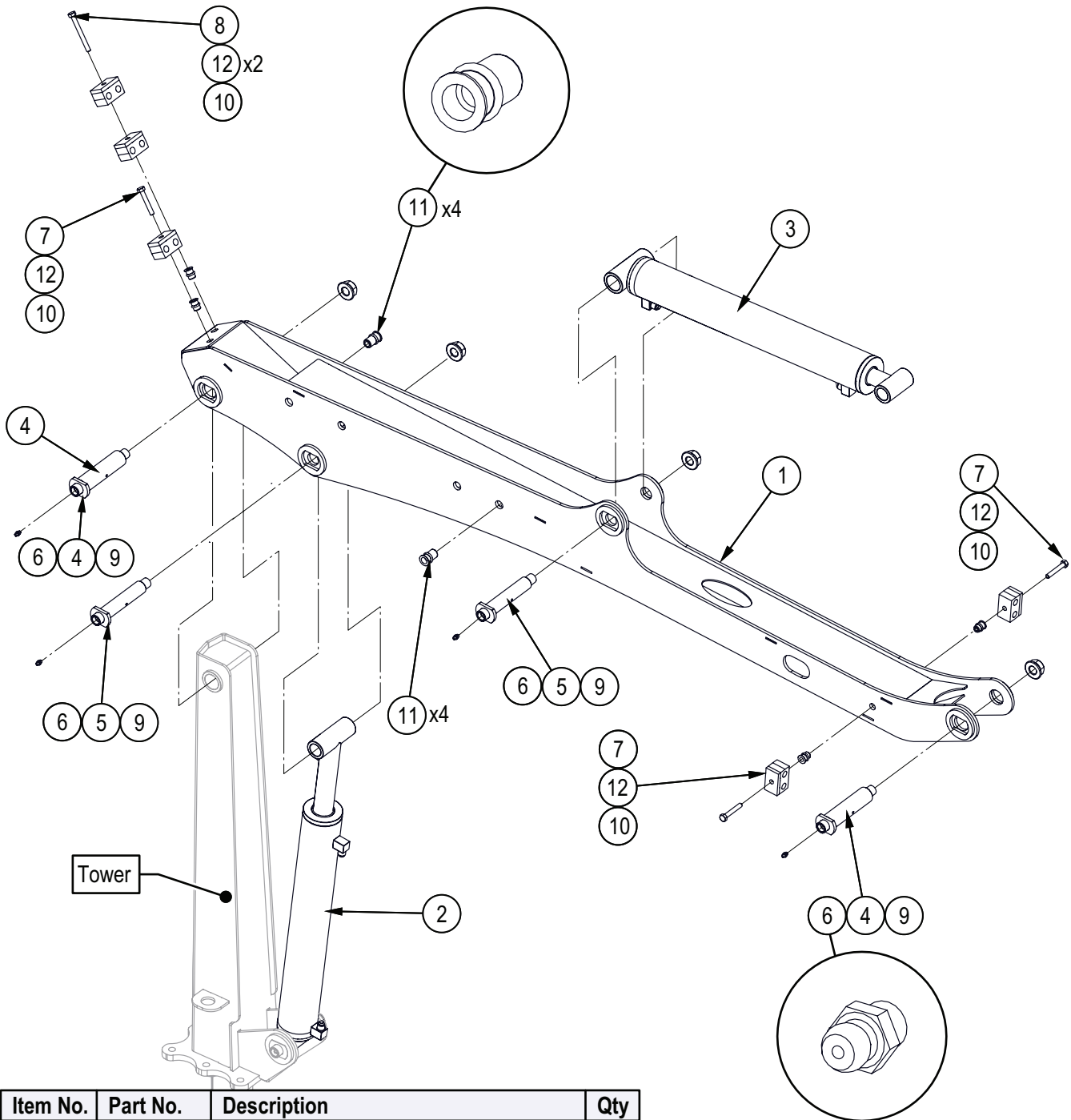
Item No.	Part No.	Description	Qty
10	Z46533	Key, 1/4" x 1/4" x 1"	1
11	Z54104	Hydraulic Motor, 315CCR	1
12	Z71110	Hex Bolt, 1/4NC x 1"	1
15	Z71515	Hex Bolt, 1/2NC x 1-1/2"	4
16	Z71517	Hex Bolt, 1/2NC x 1-3/4"	2
17	Z76121	Flange Bolt, 5/16NC x 3/4"	4
18	Z71617	Hex Bolt, 5/8NC x 1-3/4"	8

Main Tower



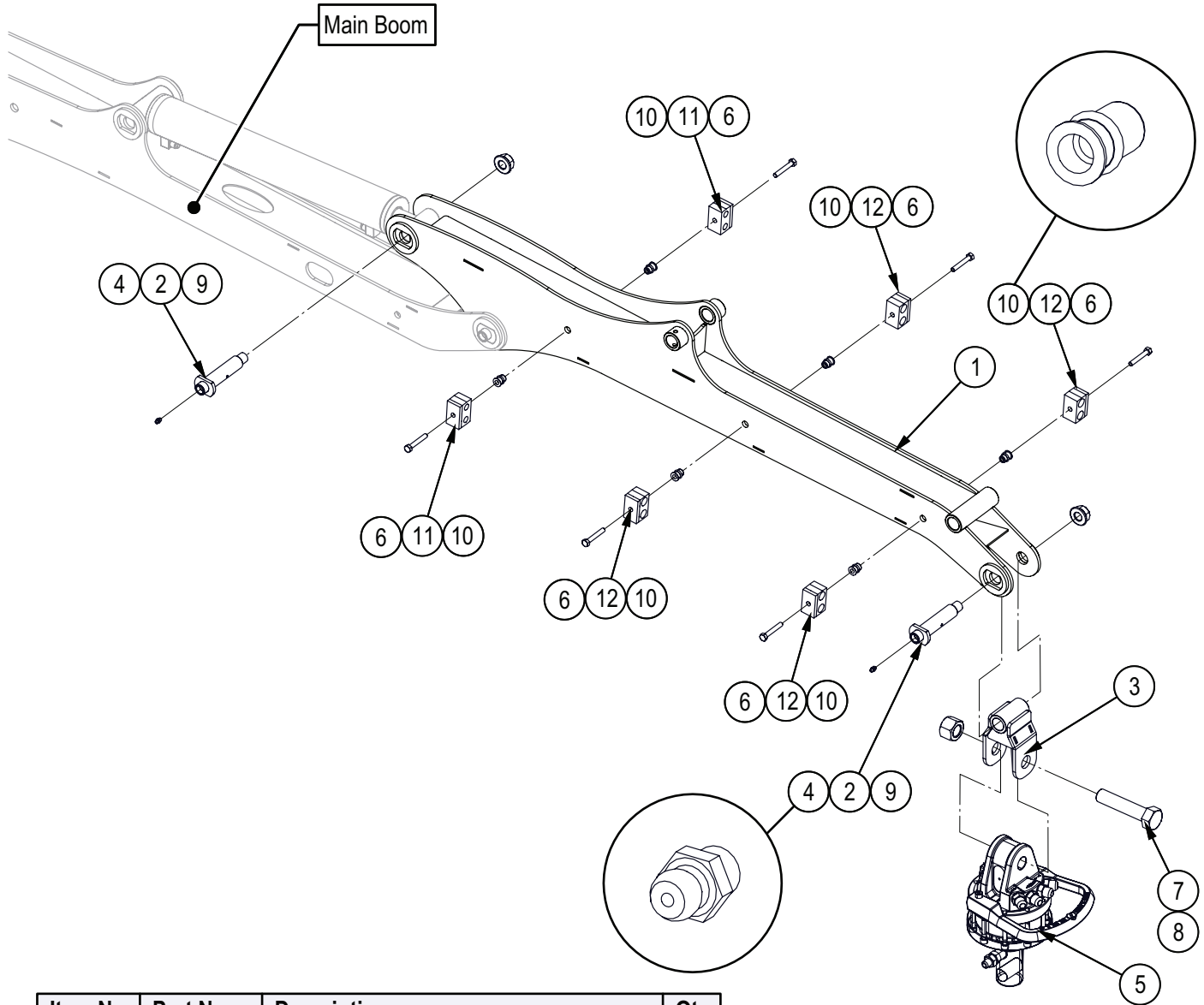
Item No.	Part No.	Descriptio	Qty
1	6030L468	Washer, Main Boom	1
2	6030W102	Main Tower	1
3	6030W131	68th Slew Gear	1
4	6030W141	Pin, Boom Cylinder	1
5	Z11264	Hitch Pin, 1" x 3-3/4" MOD	1
6	Z12140	Lynch Pin, 7/16"	1
7	Z22402	Fiberglide Thrust Bearing, 2.072" ID x 2.615" OD x 0.058"	1
8	Z27105	Fiberglide Bearing, 3" ID x 1-3/4" long x 3/32" wall	2
9	Z28205	Single Lip Seal, 3"	1
10	Z29202	Grease Fitting, 1/4NF	1
11	Z71220	Hex Bolt, 5/16NC x 2"	1
12	Z71510	Hex Bolt, 1/2NC x 1"	1
13	Z71522	Hex Bolt, 1/2NC x 2-1/4"	8
14	Z72251	Hex Lock Nut, 1/2NC	8
15	Z72571	Serrated Flange Locknut, 3/4NF Top Lock	1
16	Z72957	Rivet Nut, 5/16NC x 312	1
17	Z79462	Double Hose Clamp, 1/2" OD	1

Main Boom



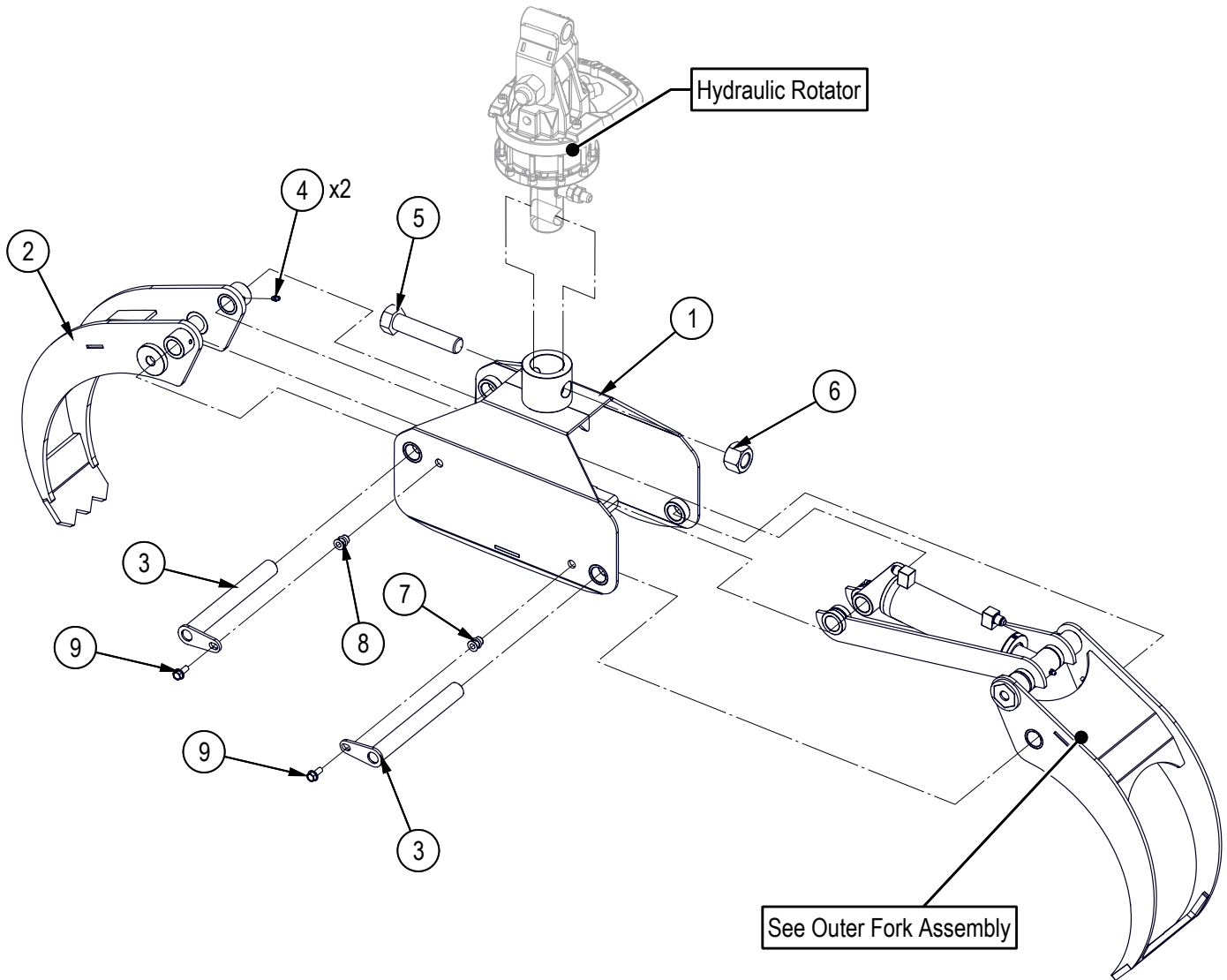
Item No.	Part No.	Description	Qty
1	6030W103	Main Boom	1
2	6030C363	Cylinder, 2-1/2" x 1-1/2" x 16-3/4"	1
3	6030C750	Cylinder, 2-1/2" x 1-1/4" x 17-3/4"	1
4	6030W133	Pin, Main Pivot	2
5	6030W134	Pin, Cylinder	2
6	Z29202	Grease Fitting, 1/4NF	4
7	Z71220	Hex Bolt, 5/16NC x 2"	3
8	Z71230	Hex Bolt, 5/16NC x 3"	1
9	Z72571	Serrated Flange Locknut, 3/4NF Top Lock	4
10	Z72957	Rivet Nut, 5/16NC x 312	4
11	Z72961	Rivet Nut, 1/2NC x 350	8
12	Z79462	Double Hose Clamp, 1/2" OD	5

Dipper Boom



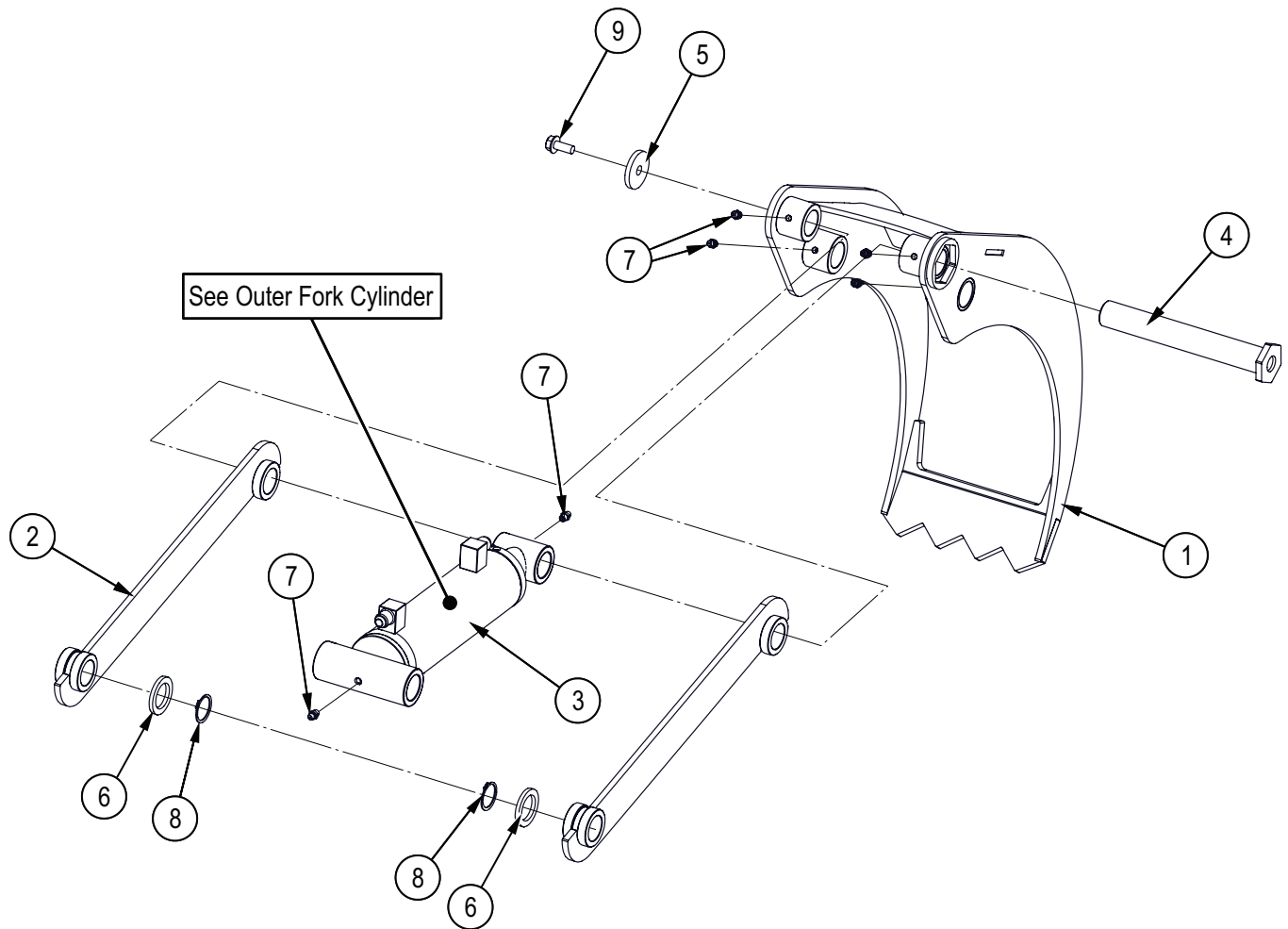
Item No.	Part No.	Description	Qty
1	6030W104	Dipper Boom	1
2	6030W135	Pin, Dipper	2
3	6030W136	Grapple Knuckle	1
4	Z29202	Grease Fitting, 1/4NF	2
5	Z54107	Hydraulic Rotator, CR300W	1
6	Z71220	Hex Bolt, 5/16NC x 2"	6
7	Z71911	Hex Bolt, 1NC x 4-1/2"	1
8	Z72291	Hex Lock Nut, 1NC	1
9	Z72571	Serrated Flange Locknut, 3/4NF Top Lock	2
10	Z72957	Rivet Nut, 5/16NC x 312	6
11	Z79462	Double Hose Clamp, 1/2" OD	2
12	Z79463	Double Hose Clamp, 11/16" OD	4

Grapple Assembly



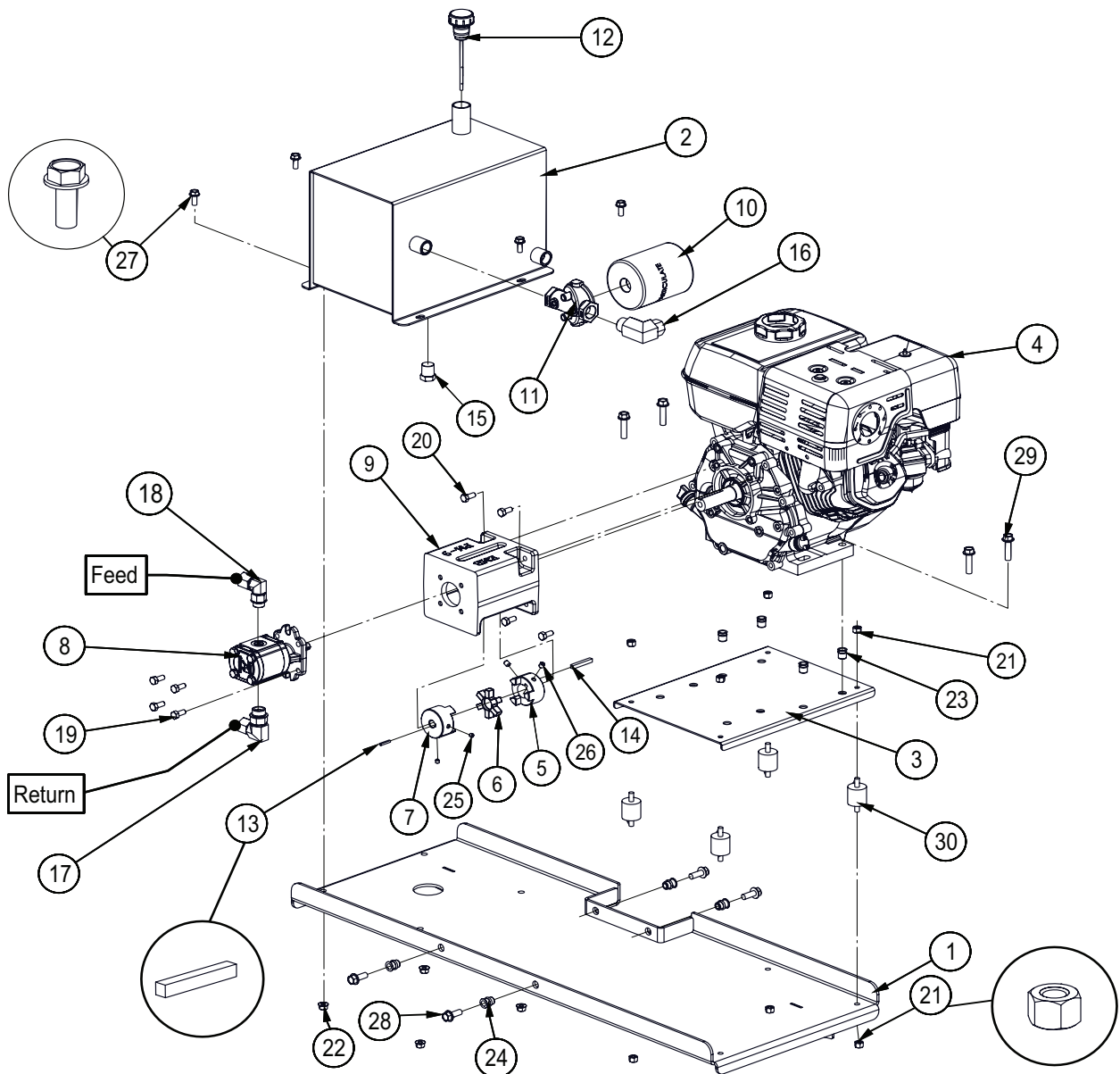
Item No.	Part No.	Description	Qty
1	6014W100	Frame, Main Grapple	1
2	6014W101	Arm, Inside Grapple	1
3	6014W104	Pin, Cylinder Linkage	2
4	Z29202	Grease Fitting, 1/4NF	2
5	Z71911	Hex Bolt, 1NC x 4-1/2"	1
6	Z72291	Hex Lock Nut, 1NC	1
7	Z72951	Rivet Nut, 5/16NC x 312	1
8	Z72957	Rivet Nut, 5/16NC x 312	1
9	Z76121	Flange Bolt, 5/16NC x 3/4"	2

Outer Fork Assembly



Item No.	Part No.	Description	Qty
1	6014W102	Arm, Outside Grapple	1
2	6014W103	Arm, Linkage	2
3	6014C401	Cylinder, 2" 1-1/4" x 4-11/16"	1
4	6014W105	Pin, Inside Linkage	1
5	6014L121	Washer, Capture	1
6	6014L133	Washer	2
7	Z29202	Grease Fitting, 1/4NF	6
8	Z46204	External Retaining Ring, 1"	2
9	Z76121	Flange Bolt, 5/16NC x 3/4"	1

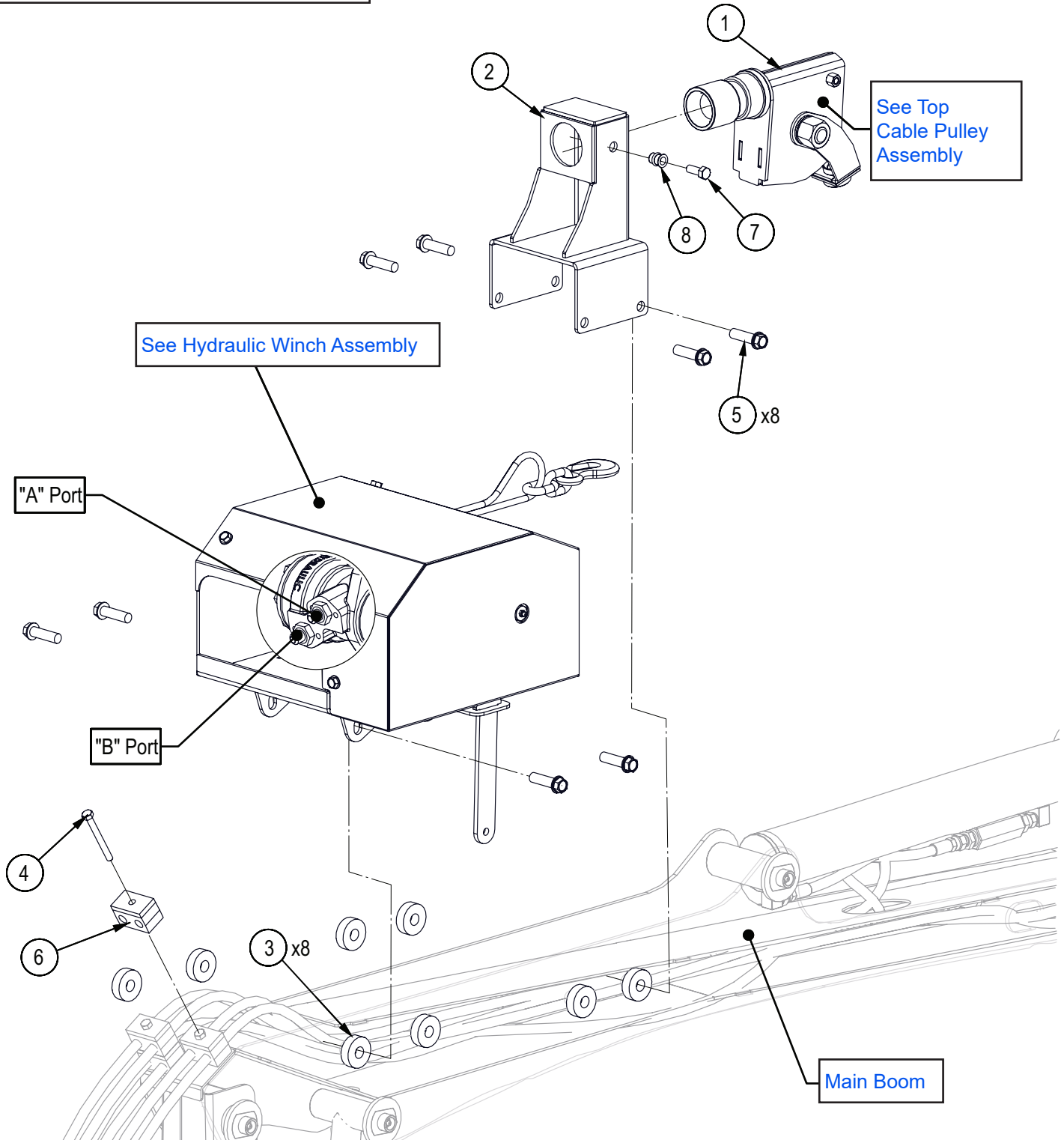
Power Pack Option



Item No.	Part No.	Description	Qty
1	6081W200	Base, Hyd Power Pack	1
2	6081W301	Tank	1
3	6081L205	Plate, Engine Mount	1
4	Z47135	Honda GX270UTQH6, Rope	1
5	Z46404	Shaft Coupling, L095 x 1"	1
6	Z46405	Spider, L095	1
7	Z46409	Shaft Coupling, L095 x 1/2"	1
8	Z53105	Gear Pump, Series 10 x 0.33CIR	1
9	Z53802	Pump Mount, PM-9	1
10	Z55301	Particulate Filter, FP12	1
11	Z55302	Filter Cap, MP12 x FP12	1
12	Z55402	Vented Plug Dipstick x 5"	1
13	Z46511	Key, 1/8" x 1/8" x 7/8"	1
14	Z46535	Key, 1/4" x 1/4" x 1-3/4"	1
15	Z51191	Hex Plug, MP 08	1
16	Z51334	Elbow 90, MP x FPX 1208	1

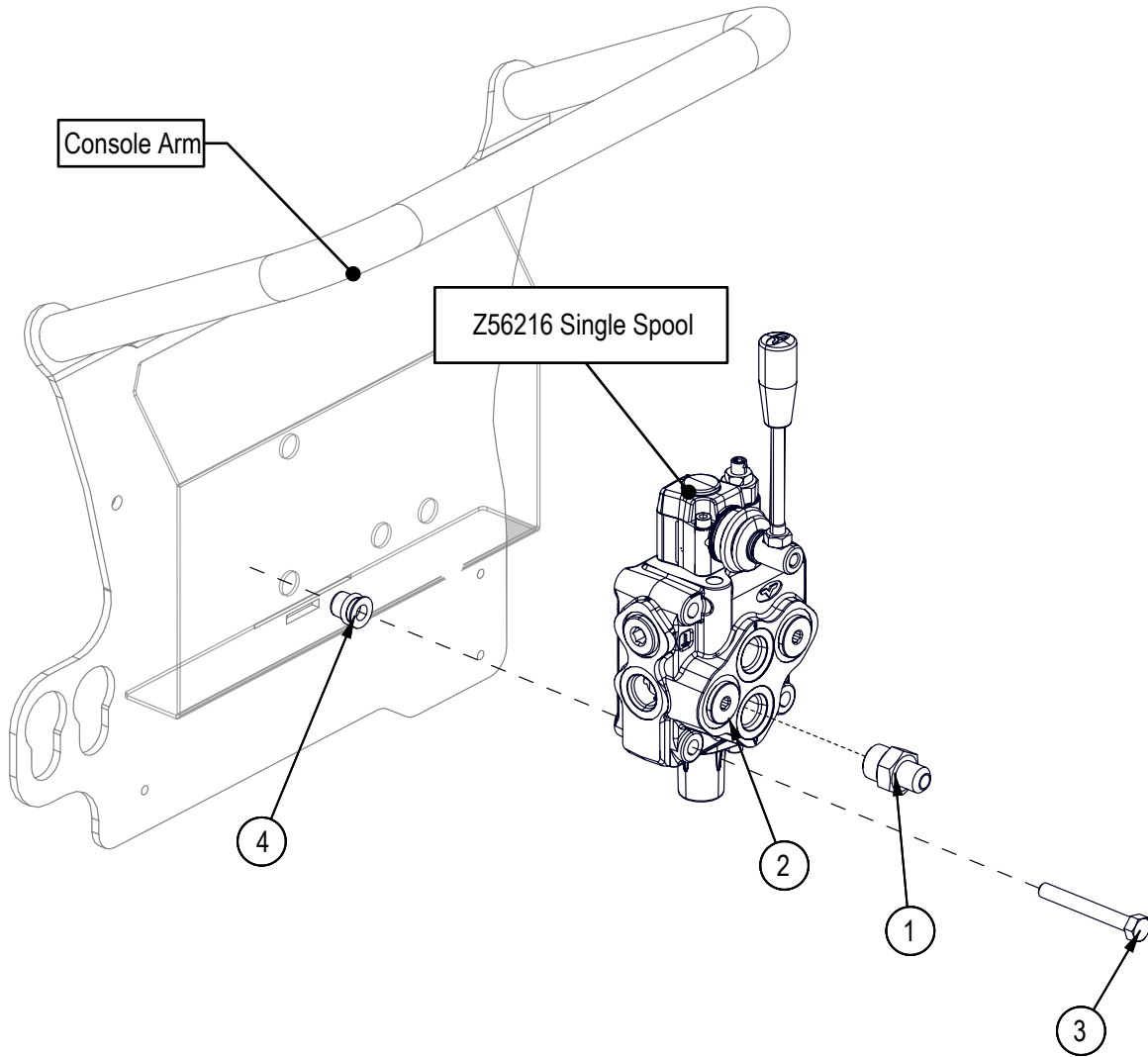
Item No.	Part No.	Description	Qty
17	Z51383	Elbow 90, MORB x FPX 0808	1
18	Z51385	Elbow 90, MORB x FPX 0608	1
19	Z71207	Hex Bolt, 5/16NC x 3/4"	4
20	Z71273	Hex Bolt, 5/16NF x 3/4"	4
21	Z72221	Hex Lock Nut, 5/16NC	8
22	Z72521	Serrated Flange Locknut, 5/16NC	4
23	Z72958	Rivet Nut, 3/8NC x 150	4
24	Z72959	Rivet Nut, 3/8NC x 312	4
25	Z74111	Set Screw, 1/4NC x 1/4"	2
26	Z74121	Set Screw, 5/16NC x 3/8"	2
27	Z76121	Flange Bolt, 5/16NC x 3/4"	4
28	Z76134	Flange Bolt, 3/8NC x 1"	4
29	Z76136	Flange Bolt, 3/8NC x 1-1/2"	4
30	Z79931	Isolator, 1-1/4" Dia x 1-1/4" x 5/16NC	4

Hydraulic Winch Kit Option



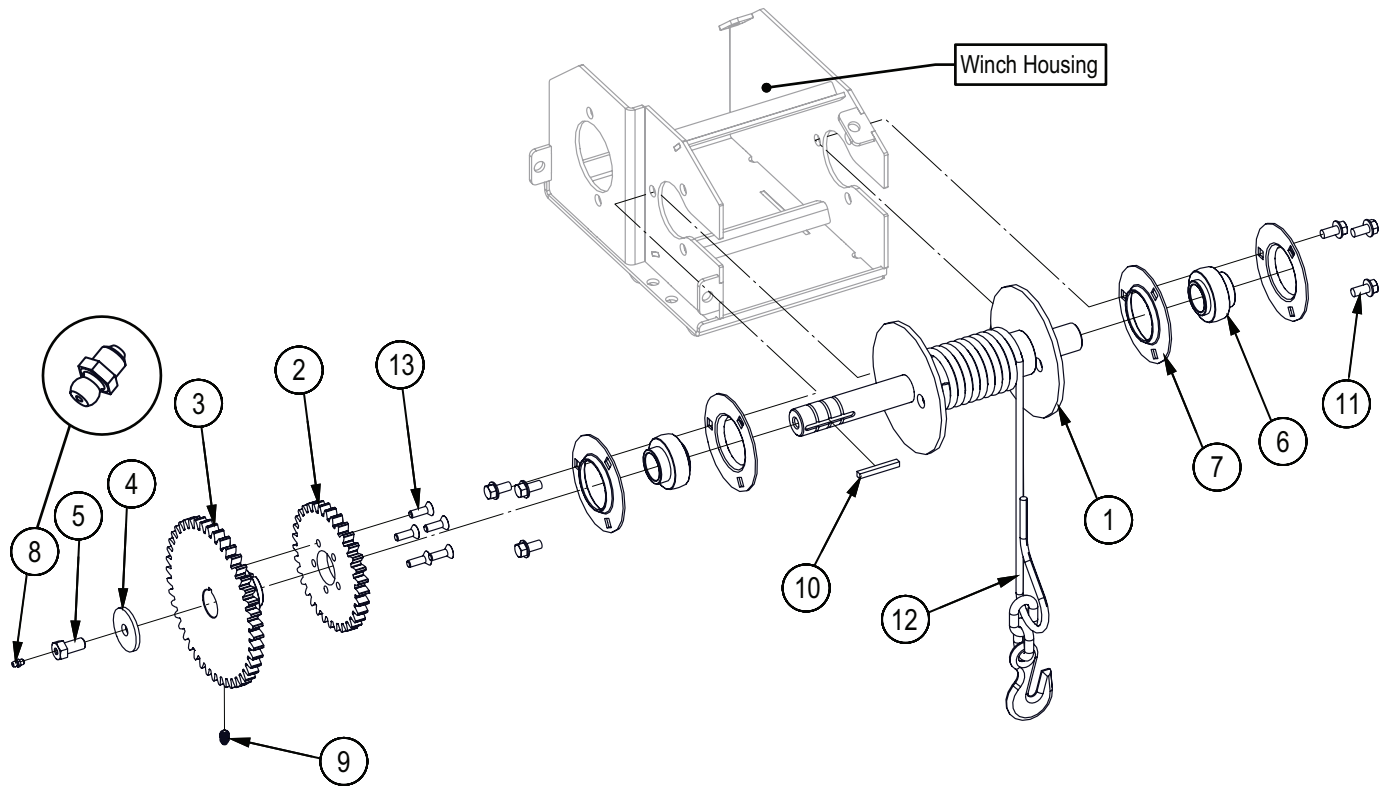
Item No.	Part No.	Description	Qty
1	6083A201	Top Cable Pulley	1
2	6083W200	Fairlead Mount	1
3	6083L211	Washer, Winch Mount	8
4	Z71230	Hex Bolt, 5/16NC x 3"	1
5	Z76155	Flange Bolt, 1/2NC x 1-3/4"	8
6	Z79462	Double Hose Clamp, 1/2" OD	1
7	Z71310	Hex Bolt, 3/8NC x 1"	1
8	Z72959	Rivet Nut, 3/8NC x 312	1

Hydraulic Winch Control Option



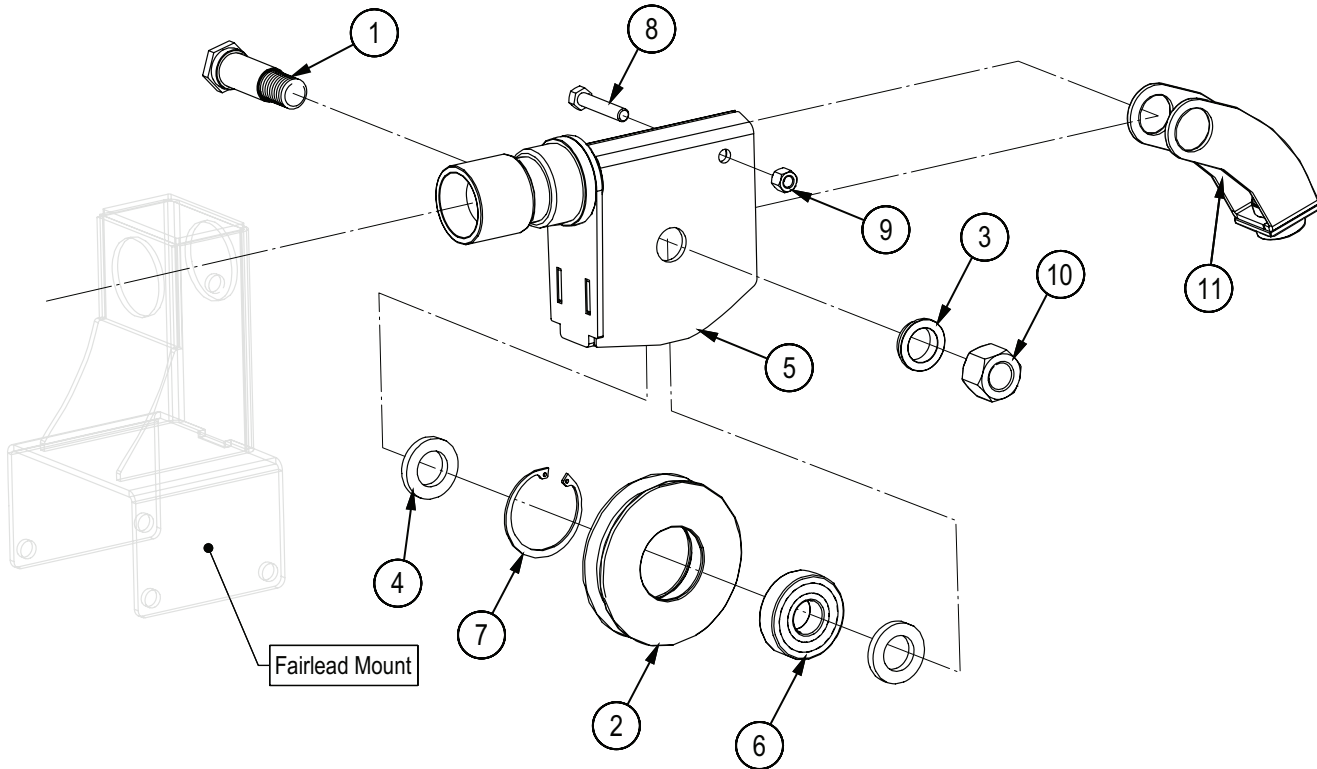
Item No.	Part No.	Description	Qty
1	Z51644	Straight, MJIC x MORB 0608	4
2	Z56216	Single Spool Valve, VC Tandem SC x 12GPM	1
3	Z71225	Hex Bolt, 5/16NC x 2-1/2"	3
4	Z72956	Rivet Nut, 5/16NC x 150	3

Winch Drum Detail Option



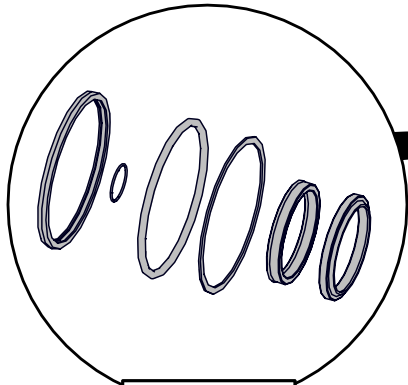
Item No.	Part No.	Description	Qty
1	6083W201	Drum, Main Cable	1
2	6083M256	Gear, High	1
3	6083M257	Gear, Low Driven	1
4	6083L207	Washer, Capture	1
5	6083M252	1/2-13 x 1 Bolt Modified	1
6	Z25207	Bearing Insert, UC206-20	2
7	Z25301	3-Bolt Flange Bearing, PF206 x Flange Only	4
8	Z29202	Grease Fitting, 1/4NF	1
9	Z34302	Spring Plunger, 3/8NC x 5/8" x 21 lbs	1
10	Z46531	Key, 1/4" x 1/4" x 2"	1
11	Z76133	Flange Bolt, 3/8NC x 3/4"	6
12	Z92118	Synthetic Winch Cable, 5/16" x 80ft with Grab Hook	1
13	Z75222	FHCS, 5/16NF x 1"	5

Top Cable Detail Option

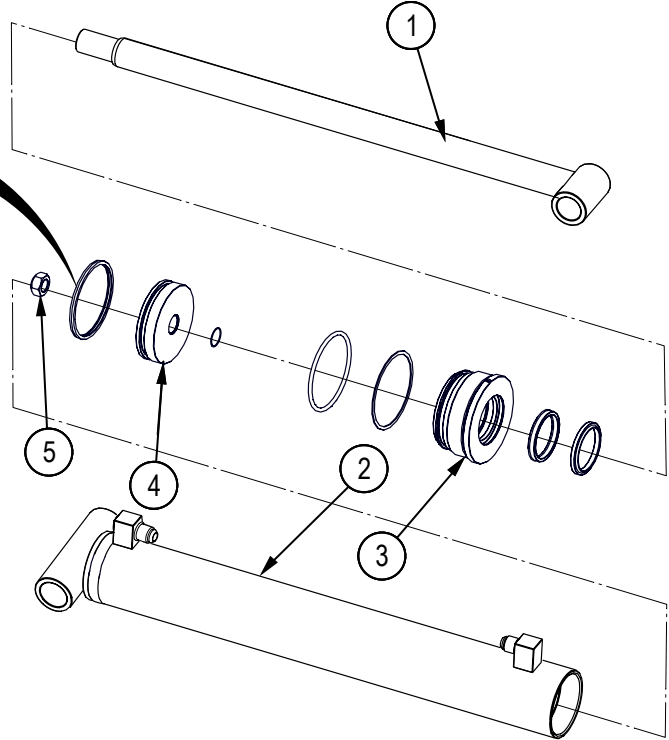


Item No.	Part No.	Description	Qty
1	5011M814	Top Pulley Pin	1
2	5011M816	Cable Pulley	1
3	5012M222	Cable Guide Swing Bushing	1
4	6083L247	Washer, Pulley Spacer - Narrow	2
5	6083W211	Frame, Top Pulley	1
6	Z21201	Ball Bearing 6305 2RS	1
7	Z46101	Internal Retaining Ring 2-7/16	1
8	Z71320	Hex Bolt, 3/8NC x 2	1
9	Z72231	Hex Lock Nut, 3/8NC	1
10	Z72281	Hex Lock Nut, 7/8-9NC	1
11	6083W208	Cable Guide	1

Main Boom Cylinder



Seal Kit #SLK2515

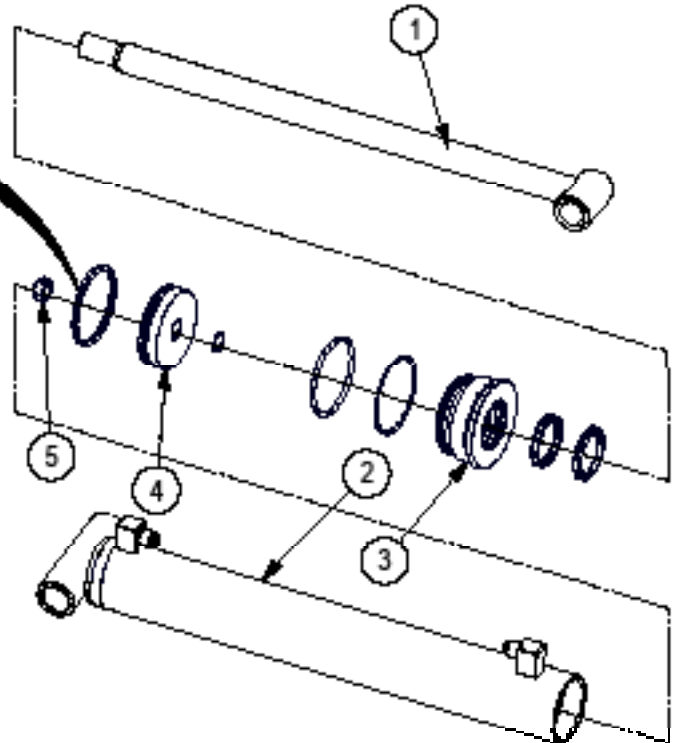


Item No.	Part No.	Description	Qty
1	6030C4362	Rod, 1-1/2 x 1	1
2	6030C4363	Barrel, 2-1/2"	1
3	G250-150S	Gland, 2-1/2" x 1-1/2"	1
4	P100-250SP	Piston, 2-1/2" Bore	1
5	Z72272G8	Hex Lock Nut, 3/4NF GR8	1

Dipper Boom Cylinder

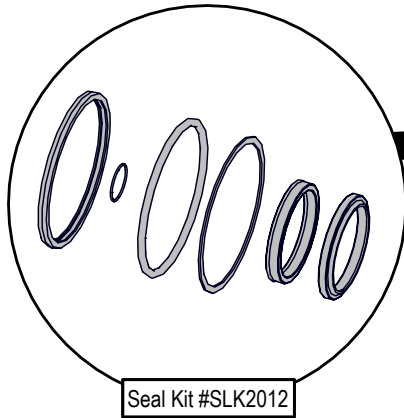


Seal Kit #5LK2512

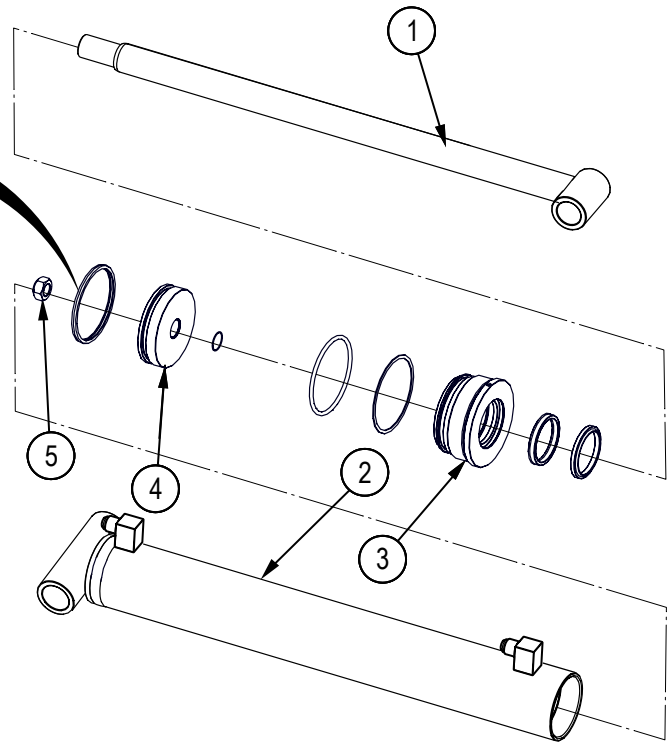


Item No.	Part No.	Description	Qty
1	6030C7503	Rod, 1-1/4 x 1	1
2	6030C7504	Barrel, 2-1/2"	1
3	G250-125S	Gland, 2-1/2" x 1-1/4"	1
4	P100-250SP	Piston, 2-1/2" Bore	1
5	Z72272G8	Hex Lock Nut, 3/4NF GR8	1

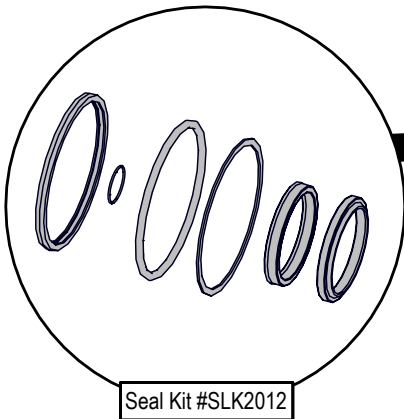
Stabilizer Cylinder



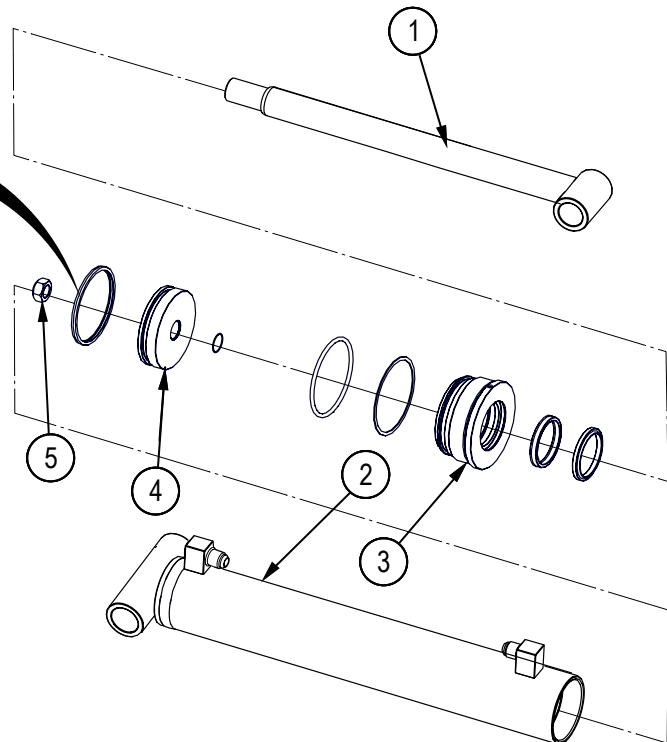
Item No.	Part No.	Description	Qty
1	6030C7543	Rod, 1-1/4 x 3/4	1
2	6030C7544	Barrel, 2"	1
3	G200-125S	Gland, 2- x 1-1/4"	1
4	P750-200SP	Piston, 2" Bore	1
5	Z72272G8	Hex Lock Nut, 3/4NF GR8	1

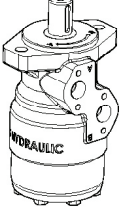
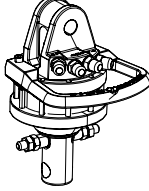
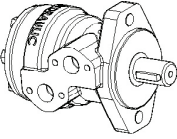
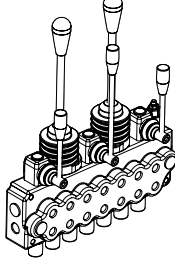
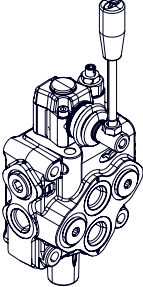
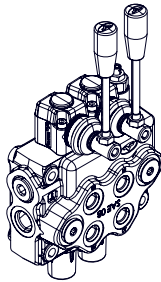


Grapple Cylinder

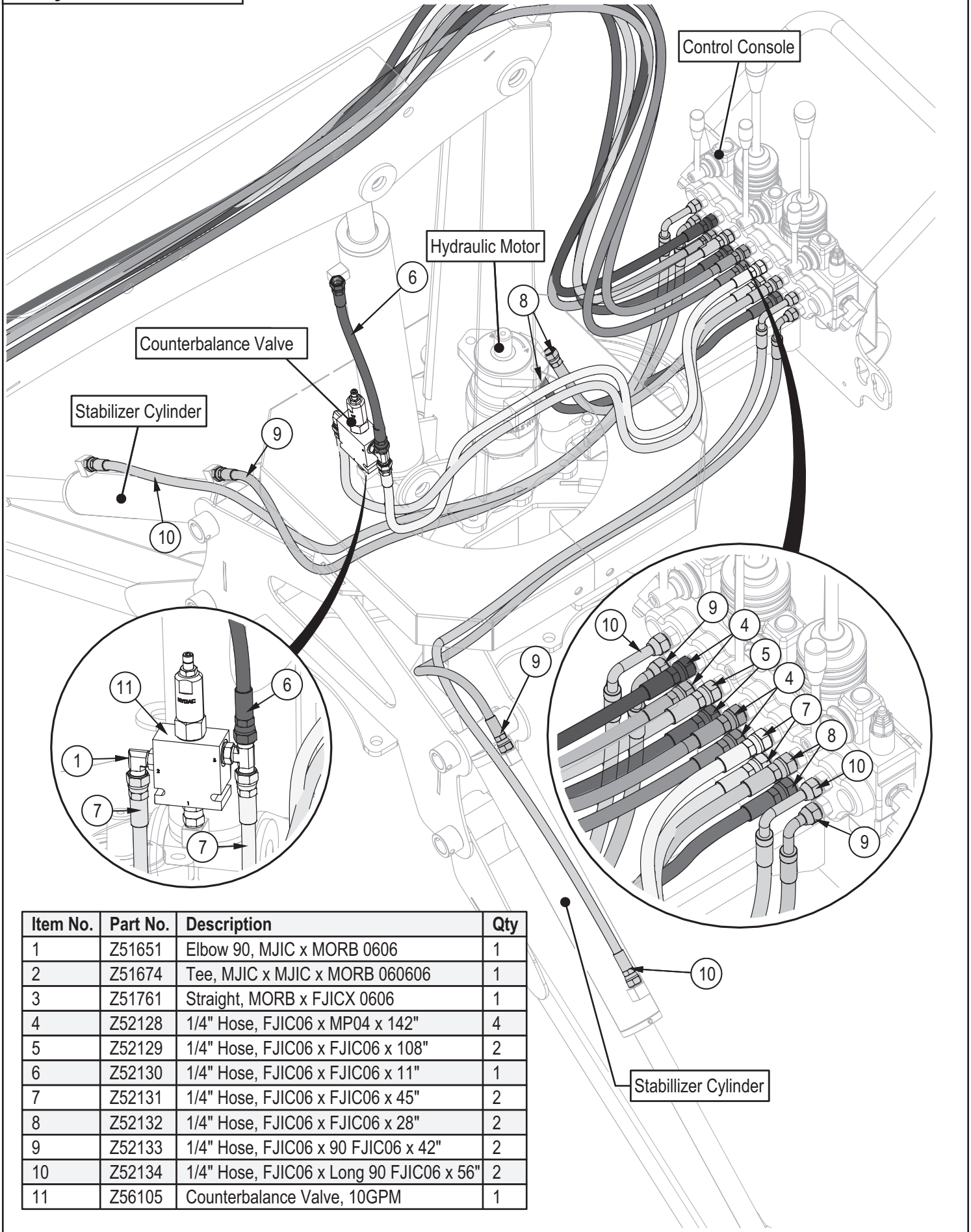


Item No.	Part No.	Description	Qty
1	6014C4013	Rod, 1-1/4 x 3/4	1
2	6014C4014	Barrel, 2" Bore	1
3	G200-125S	Gland, 2- x 1-1/4"	1
4	P750-200SP	Piston, 2" Bore	1
5	Z72272G8	Hex Lock Nut, 3/4NF GR8	1



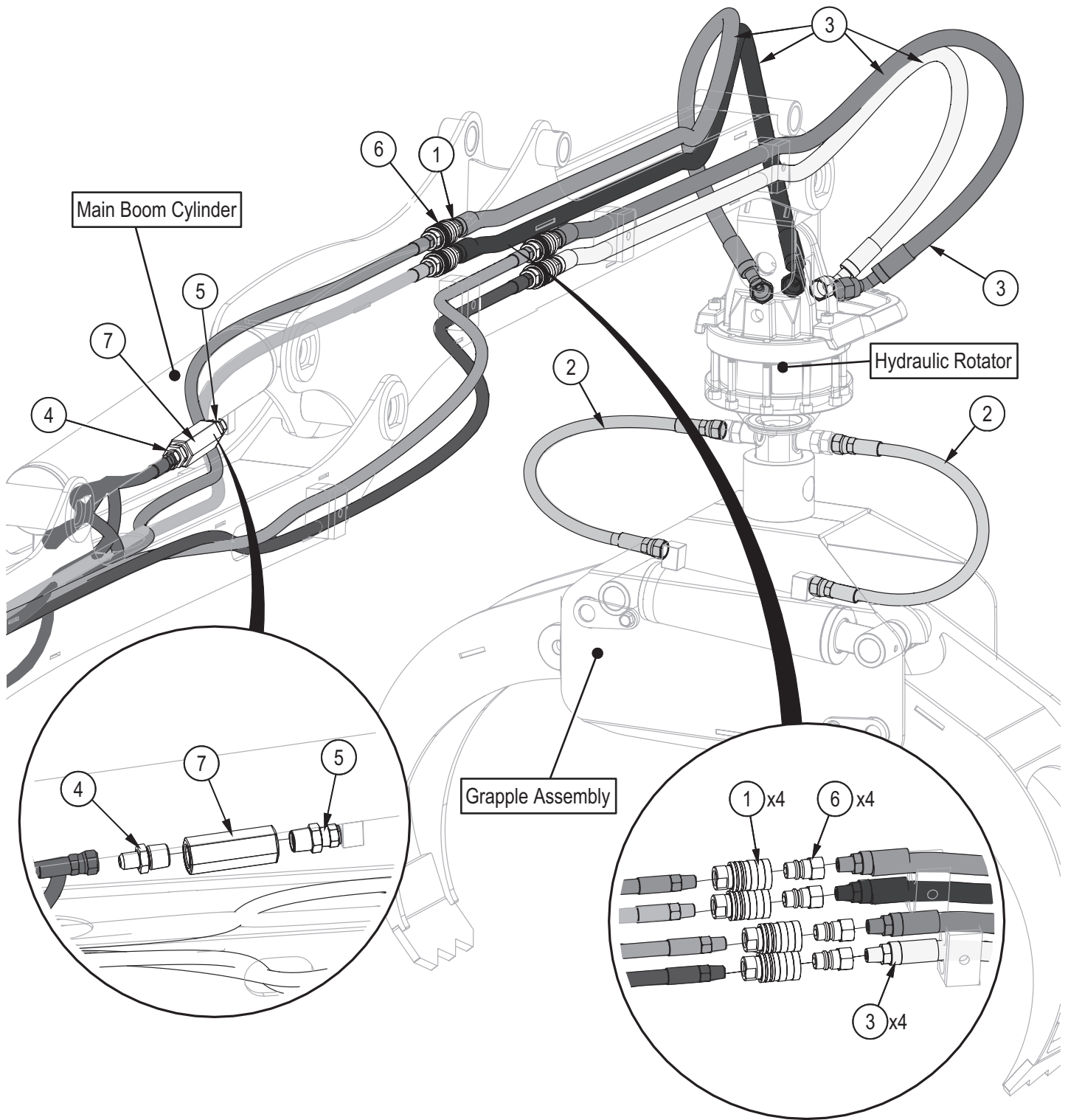
<p>Seal Kits</p>	<p>Seal Kit: Z54107 CR300 Hydraulic Rotator</p>
<p>Seal Kit: Z54104 315 Series Hydraulic Motor (Main boom)</p> <div style="display: flex; justify-content: space-around; align-items: center;">  <div data-bbox="386 275 769 338"> <p>Seal Kit: SK MLHP-U/D,E</p> </div> </div>	<div style="display: flex; justify-content: space-around; align-items: center;">  <div data-bbox="1114 275 1497 338"> <p>Seal Kit: RK CR300</p> </div> </div>
<p>Seal Kit: Z54108 Hydraulic Motor (Winch) MLHP 50</p> <div style="display: flex; justify-content: space-around; align-items: center;">  <div data-bbox="386 621 769 684"> <p>Seal Kit: SK MLHP-U/D,E</p> </div> </div>	<p>Seal Kit: Z56206 Monoblock 7-Section Valve</p> <div style="display: flex; justify-content: space-around; align-items: center;">  <div data-bbox="1127 621 1510 684"> <p>Seal Kit: SK SD5/7</p> </div> </div>
<p>Seal Kit: Z56216 Single Spool Valve</p> <div style="display: flex; justify-content: space-around; align-items: center;">  <div data-bbox="391 989 776 1052"> <p>Seal Kit: SK SD5/1</p> </div> </div>	<p>Seal Kit: Z56219 2 Spool Valve</p> <div style="display: flex; justify-content: space-around; align-items: center;">  <div data-bbox="1127 989 1511 1052"> <p>Seal Kit: SK SD5/2</p> </div> </div>

Hydraulic Circuit



Item No.	Part No.	Description	Qty
1	Z51651	Elbow 90, MJIC x MORB 0606	1
2	Z51674	Tee, MJIC x MJIC x MORB 060606	1
3	Z51761	Straight, MORB x FJICX 0606	1
4	Z52128	1/4" Hose, FJIC06 x MP04 x 142"	4
5	Z52129	1/4" Hose, FJIC06 x FJIC06 x 108"	2
6	Z52130	1/4" Hose, FJIC06 x FJIC06 x 11"	1
7	Z52131	1/4" Hose, FJIC06 x FJIC06 x 45"	2
8	Z52132	1/4" Hose, FJIC06 x FJIC06 x 28"	2
9	Z52133	1/4" Hose, FJIC06 x 90 FJIC06 x 42"	2
10	Z52134	1/4" Hose, FJIC06 x Long 90 FJIC06 x 56"	2
11	Z56105	Counterbalance Valve, 10GPM	1

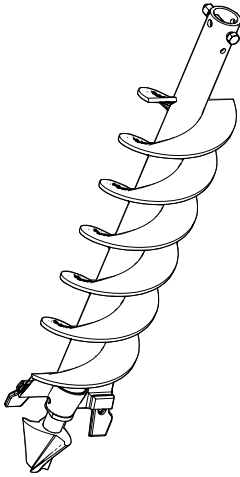
Hydraulic Circuit



Item No.	Part No.	Description	Qty
1	Z51917	Quick Coupler, FP04 x M ISO 5675	4
2	Z52137	1/4" Hose, FJIC06 x FJIC06 x 15"	2
3	Z52259	3/8" Hose, 45FJIC08 x MP04 x 50"	4
4	Z51441	Straight, MJIC x MP 0608	1
5	Z51512	Straight, MP x FJICX 0806	1
6	Z51918	Quick Coupler, FP04 x F ISO 5675	4
7	Z56104	Check Valve, FP08 x 0.040"	1

Accessories

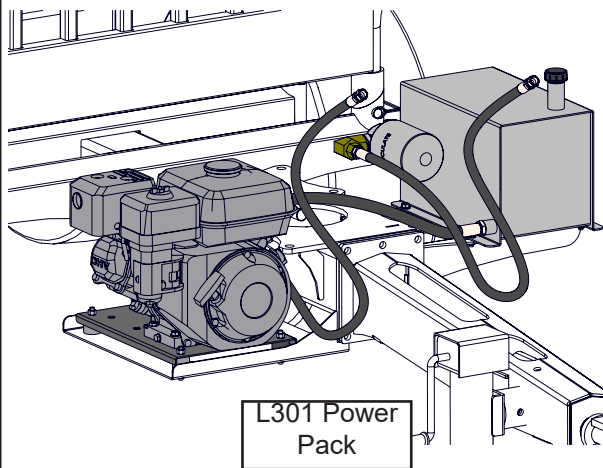
Call your dealer for pricing and availability



#LA610 6" Diameter Auger Kit
#LA910 9" Diameter Auger Kit

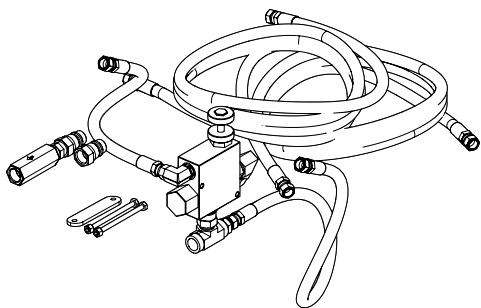
For all LX models.

A great way to get your fence post jobs done quickly and efficiently. Both hydraulic augers are capable of a hole depth of a 107 cm (42")



#L301 LX95 Power Pack

Independently power your LX grapple: the **L301 for LX95** features a 6HP Honda engine. Power packs include hydraulic pump and 17.5 litre (4.6 us gal) reservoir tank.



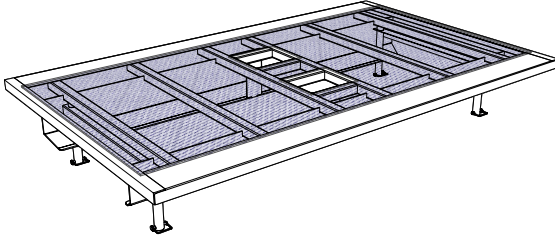
#L101 Tractor Hydraulic Kit

For all LX models

Makes use your existing tractor hydraulics, comes with everything you need to attach and control you hydraulics. Includes: flow control, hoses, and hardware

Accessories

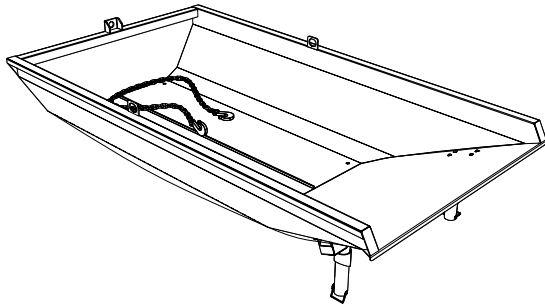
Call your dealer for pricing and availability



LT60 Expanded Metal Flat bed – P/N L630

Transporting material and equipment made easy. Simply drop on this flat bed and you're set to go!

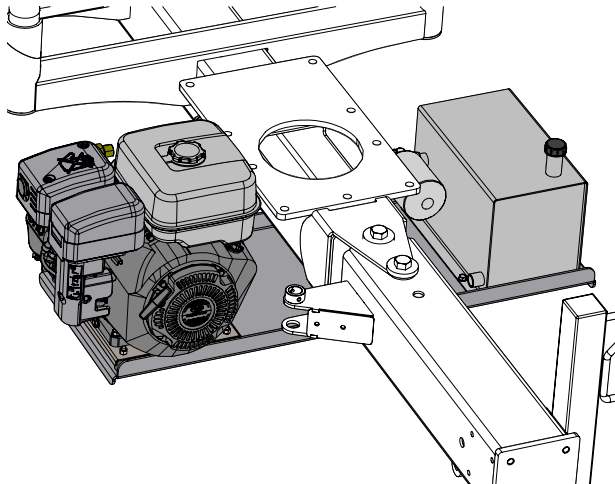
LT60 trailer L630 has a 10.6 ft x 5.8 ft (321 cm x 179 cm) cargo bed.



LT60 DUMP BOX – P/N L620

Load, transport and easily dump your loads. Made for use with the back hoe kit.

The L620 holds 45.9 ft³ (1.3 m³). Each dump box comes complete with a 6 ft (1.8 m) chain used for dumping.



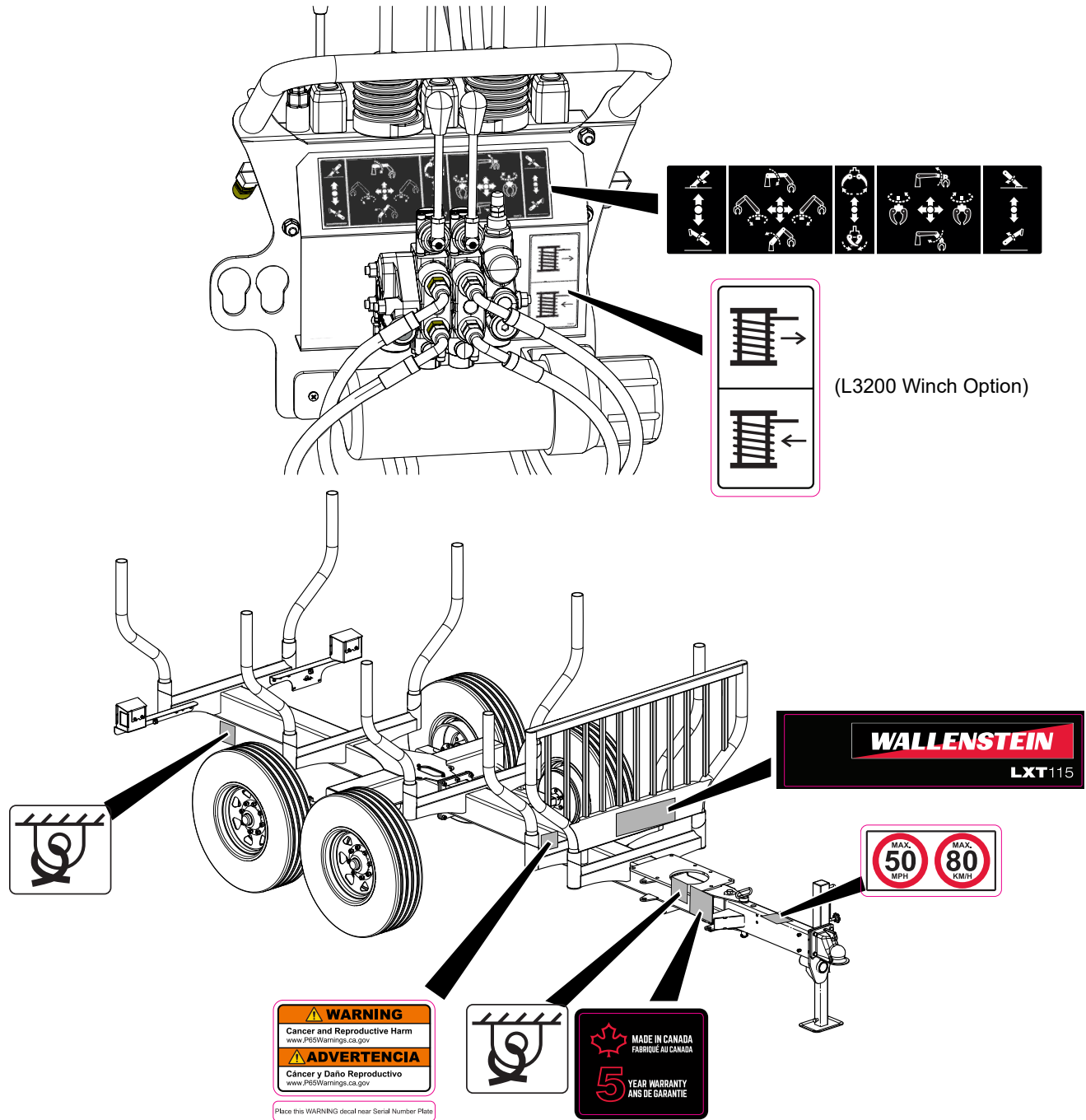
LX115 POWER PACK – P/N L601

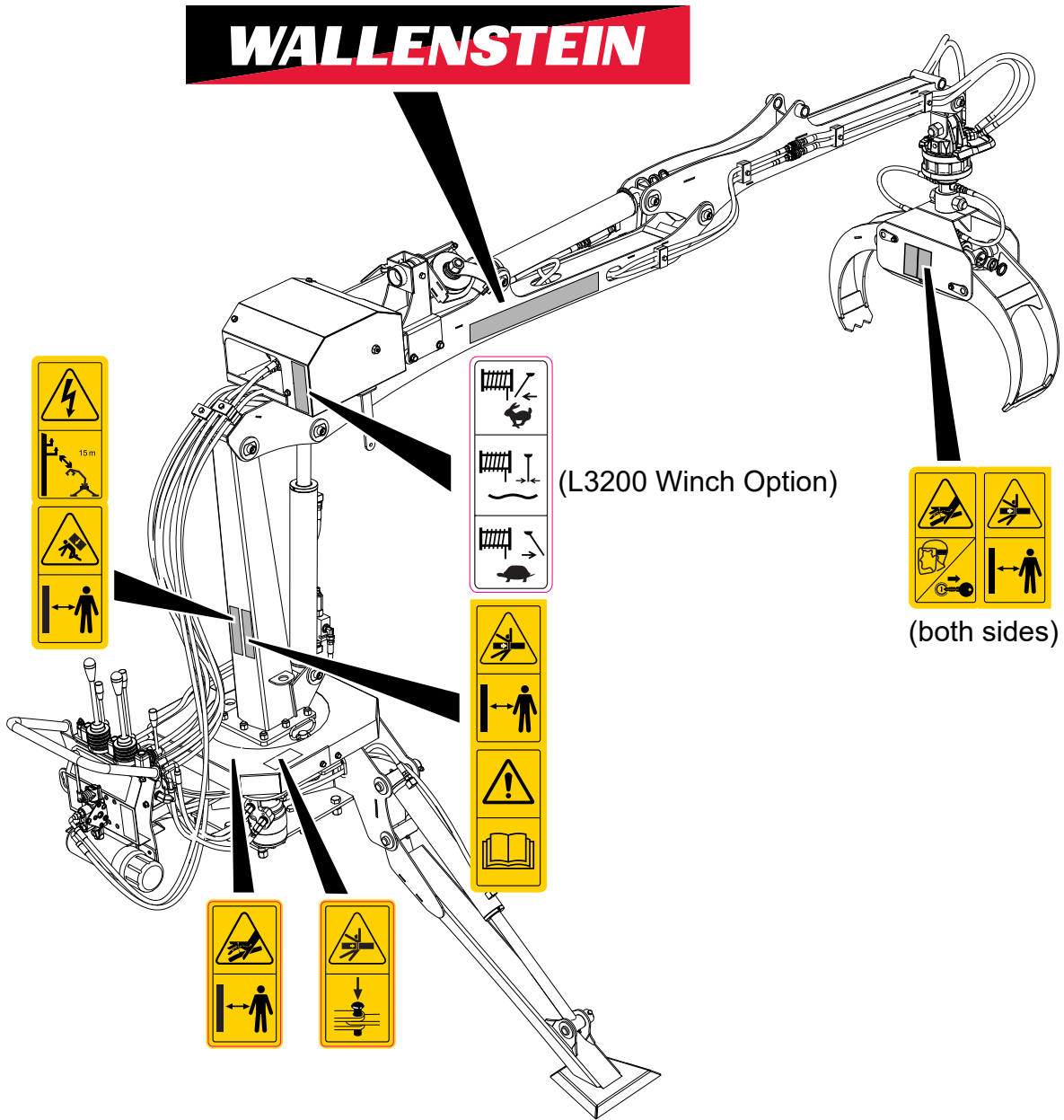
Independently power your LX grapple: the L601 for LX115 features a 9HP Subaru engine. Power packs include hydraulic pump and 4.6 US gal (17.5 L) reservoir.

Decal Layout

IMPORTANT! If parts are replaced that have safety signs on them, new signs must be applied. Safety signs must always be replaced if they become damaged, are removed, or become illegible.

Safety signs are included in the product decal kit available from your authorized dealer. Decals are not available separately.






Common Bolt Torque Values

Checking Bolt Torque

The tables shown give correct torque values for various bolts and capscrews. Tighten all bolts to the torque values specified in the table, unless indicated otherwise. Check tightness of bolts periodically.

IMPORTANT! If replacing hardware, use fasteners of the same grade.

IMPORTANT! Torque figures indicated in the table are for non-greased or non-oiled threads. Do not grease or oil threads unless indicated otherwise. When using a thread locker, increase torque values by 5%.

 **NOTE:** Bolt grades are identified by their head markings.

Imperial Bolt Torque Specifications

Bolt Diameter	Torque Value					
	SAE Gr. 2		SAE Gr. 5		SAE Gr. 8	
	lbf•ft	N•m	lbf•ft	N•m	lbf•ft	N•m
1/4"	6	8	9	12	12	17
5/16"	10	13	19	25	27	36
3/8"	20	27	33	45	45	63
7/16"	30	41	53	72	75	100
1/2"	45	61	80	110	115	155
9/16"	60	95	115	155	165	220
5/8"	95	128	160	215	220	305
3/4"	165	225	290	390	400	540
7/8"	170	230	420	570	650	880
1"	225	345	630	850	970	1320



SAE Gr. 2



SAE Gr. 5



SAE Gr. 8

Metric Bolt Torque Specifications

Bolt Diameter	Torque Value			
	Gr. 8.8		Gr. 10.9	
	lbf•ft	N•m	lbf•ft	N•m
M3	0.4	0.5	1.3	1.8
M4	2.2	3	3.3	4.5
M6	7	10	11	15
M8	18	25	26	35
M10	37	50	52	70
M12	66	90	92	125
M14	83	112	116	158
M16	166	225	229	310
M20	321	435	450	610
M30	1,103	1 495	1,550	2 100



8.8



10.9

Hydraulic Fitting Torque Values

Tightening Flare Type Tube Fittings

1. Check flare and flare seat for defects that might cause leakage.
2. Align tube with fitting before tightening.
3. Hand-tighten swivel nut until snug.
4. To prevent twisting the tube, use two wrenches. Place one wrench on the connector body and tighten the swivel nut with the second. Torque to values shown.

If a torque wrench is not available, use the FFFT (Flats From Finger Tight) method.

Hydraulic Fitting Torque					
Tube Size OD	Hex Size Across Flats	Torque value		Flats From Finger Tight	
		lbf•ft	N•m	Flats	Turns
3/16	7/16	6	8	2	1/6
1/4	9/16	11–12	15–17	2	1/6
5/16	5/8	14–16	19–22	2	1/6
3/8	11/16	20–22	27–30	1-1/4	1/6
1/2	7/8	44–48	59–65	1	1/6
5/8	1	50–58	68–79	1	1/6
3/4	1-1/4	79–88	107–119	1	1/8
1	1-5/8	117–125	158–170	1	1/8

Values shown are for non-lubricated connections.

Wheel Lug Torque Values

It is extremely important safety procedure to apply and maintain proper wheel mounting torque on your trailer axle. Torque wrenches are the best method to assure the proper amount of torque is being applied to a fastener.

Wheel lugs should be torqued before first road use and after each wheel removal. Check and re torque after the first 10 miles (16 km), 25 miles (40 km), and again at 50 miles (80 km). Check periodically thereafter.

NOTE: *Wheel lugs must be applied and maintained at the proper torque levels to prevent loose wheels, broken studs, and possible dangerous separation of wheels from your axle.*

- Start all lugs by hand to prevent cross threading.
- Tighten lugs in sequence, per wheel lug torque sequence chart.
- The tightening of the fasteners should be done in stages. Following the recommended sequence, tighten fasteners per wheel torque requirements chart.

Wheel Lug Nut Torque				
Wheel Size	Units	1st Stage	2nd Stage	3rd Stage
8"	lbf•ft N•m	12–20 16–26	30–35 39–45.5	45–55 58.5–71.5
12"	lbf•ft N•m	20–25 26–32.5	35–40 45.5–52	50–60 65–78
13"	lbf•ft N•m	20–25 26–32.5	35–40 45.5–52	50–60 65–78
14"	lbf•ft N•m	20–25 26–32.5	50–60 65–78	90–120 117–156
15"	lbf•ft N•m	20–25 26–32.5	50–60 65–78	90–120 117–156
16"	lbf•ft N•m	20–25 26–32.5	50–60 65–78	90–120 117–156

Wheel Lug Torque Pattern

