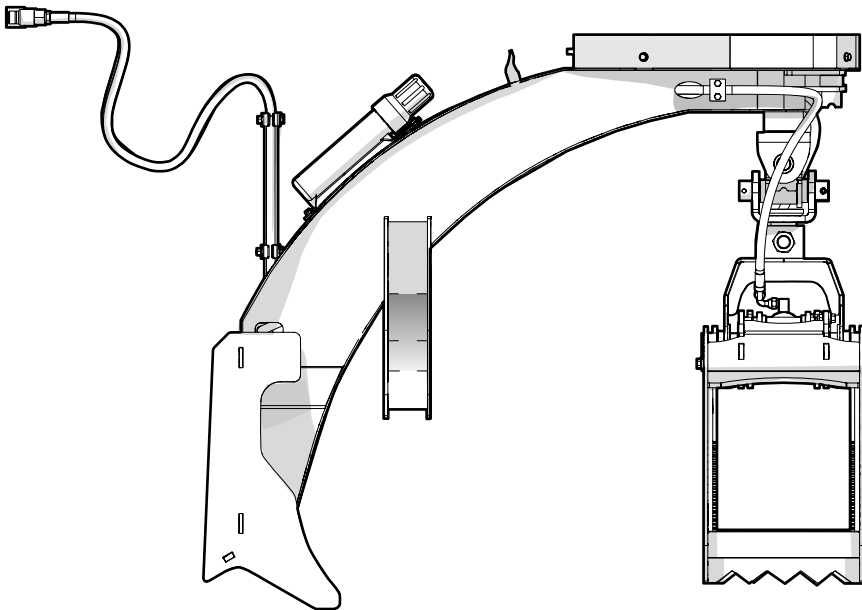


# PARTS MANUAL

---

Serial number 420S001 to 420S091, 1100000 and up

## LXG420S Skid Steer Grapple



# Table of Contents

**Introduction .....3**  
**Model and Serial Number Location.....3**  
**Main Parts.....4**  
**Main Parts.....5**  
**Main Parts Assembly .....6**  
**Pivot Assembly Detail .....7**  
**Return Lock Assembly Detail .....8**  
**Grapple Assembly.....9**  
**Grapple Assembly.....10**  
**Outer Fork Assembly Detail.....11**  
**Outer Fork Assembly Detail.....12**  
**Hydraulic Circuit.....13**  
**Label Locations .....14**  
**Accessories .....15**  
**Bolt Torque .....16**  
**Hydraulic Fitting Torque.....17**

## Introduction

### **! WARNING!**

For safety, operation, and maintenance information, see the Operator's Manual for your product.

Only qualified people are approved to maintain the machine.

### **! WARNING!**

Replace all safety labels that are missing, damaged, or illegible. If a component is replaced and it has a safety label on it, apply a safety label to the new component. If a person operates a machine with missing, damaged, or illegible safety labels it puts them at risk of serious injury or death.

W100

This document provides information about the original equipment manufacturer (OEM) components (parts). Always replace a part with the correct OEM part. For service, support, or to order parts, contact your local Wallenstein Equipment dealer or distributor.

Always provide the model and serial number of your Wallenstein product when you order parts, or request service or other information. The model and serial number location is shown in the following illustration.

Record the model and serial number of your product here:

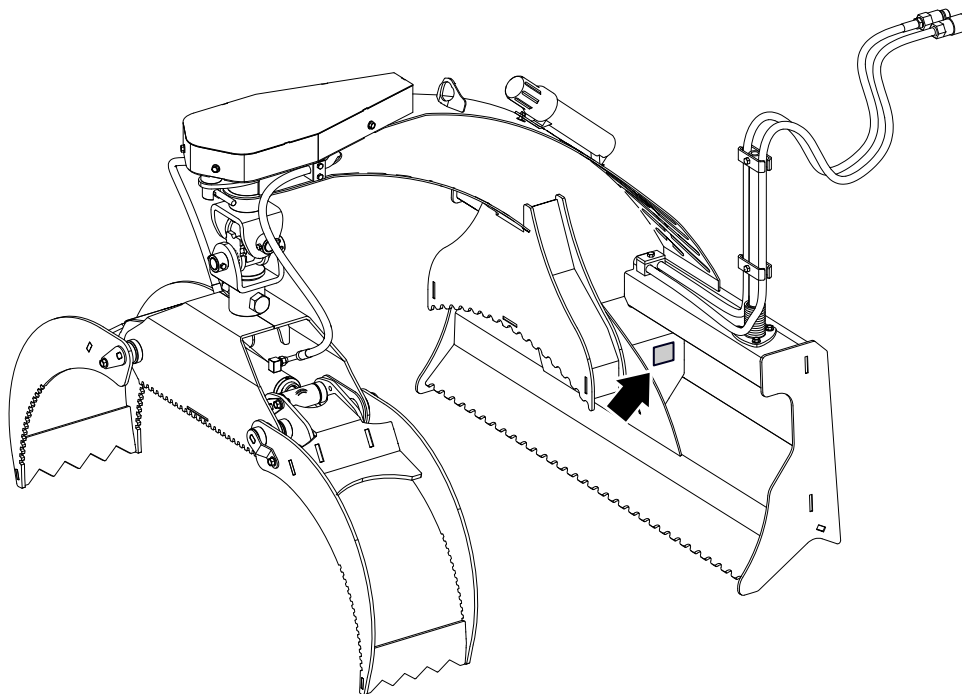
Model	
Serial Number	

The information contained in this document was current at the revision date noted on the bottom of each page. Wallenstein Equipment reserves the right to change product specifications at any time without notice. If your product specifications are different from the information in this document, contact your local dealer or distributor. To find a local dealer or distributor, go to [WallensteinEquipment.com](http://WallensteinEquipment.com) and select **Dealer Locator** at the bottom of the page.

**Wallenstein Equipment Inc. • © 2024. All rights reserved.**

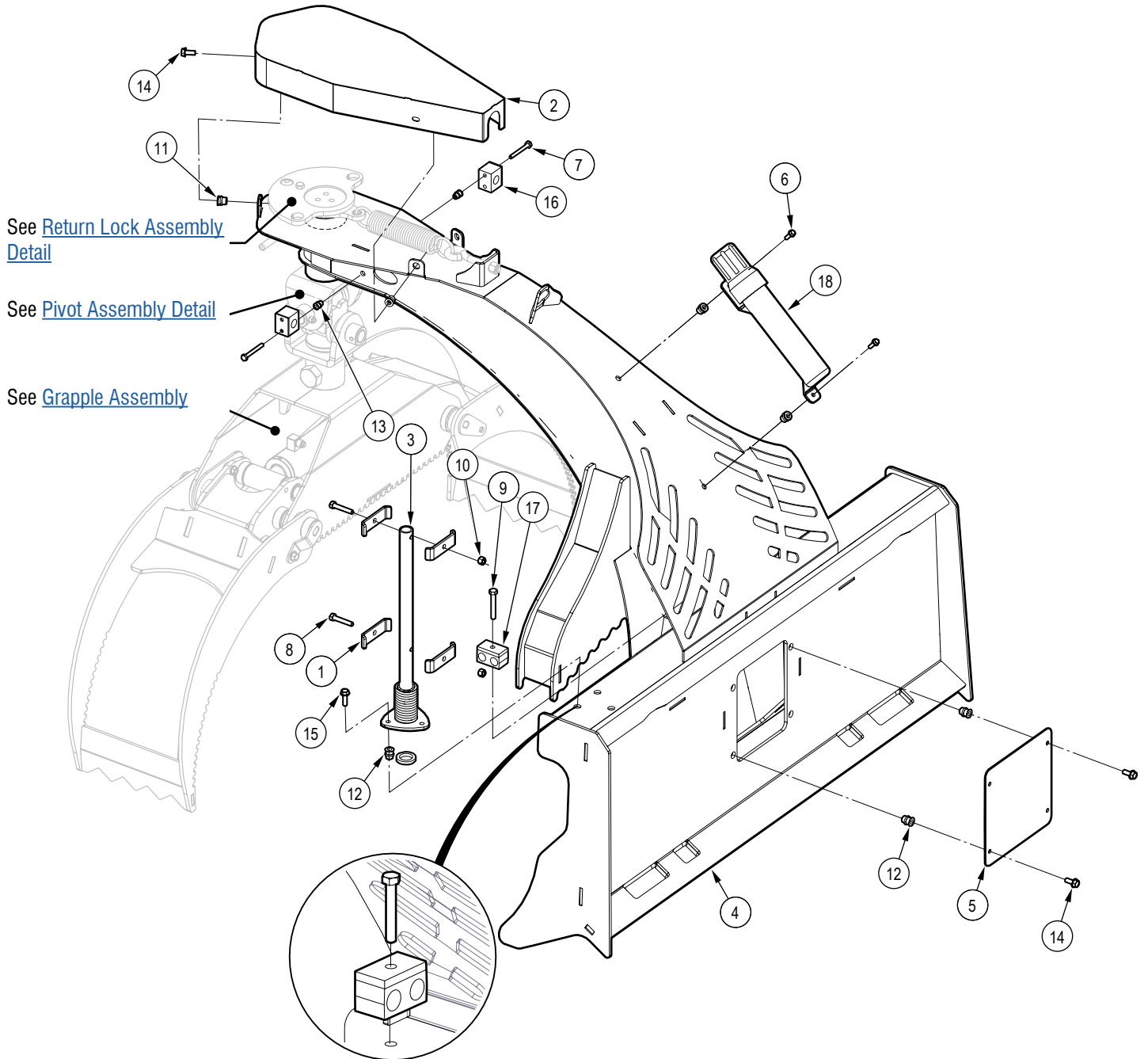
No part of this work may be copied, reproduced, replaced, distributed, published, displayed, modified, or transferred in any form or by any means except with the prior permission of Wallenstein Equipment Inc.

## Model and Serial Number Location



# Main Parts

Serial number 420S038 to 420S058

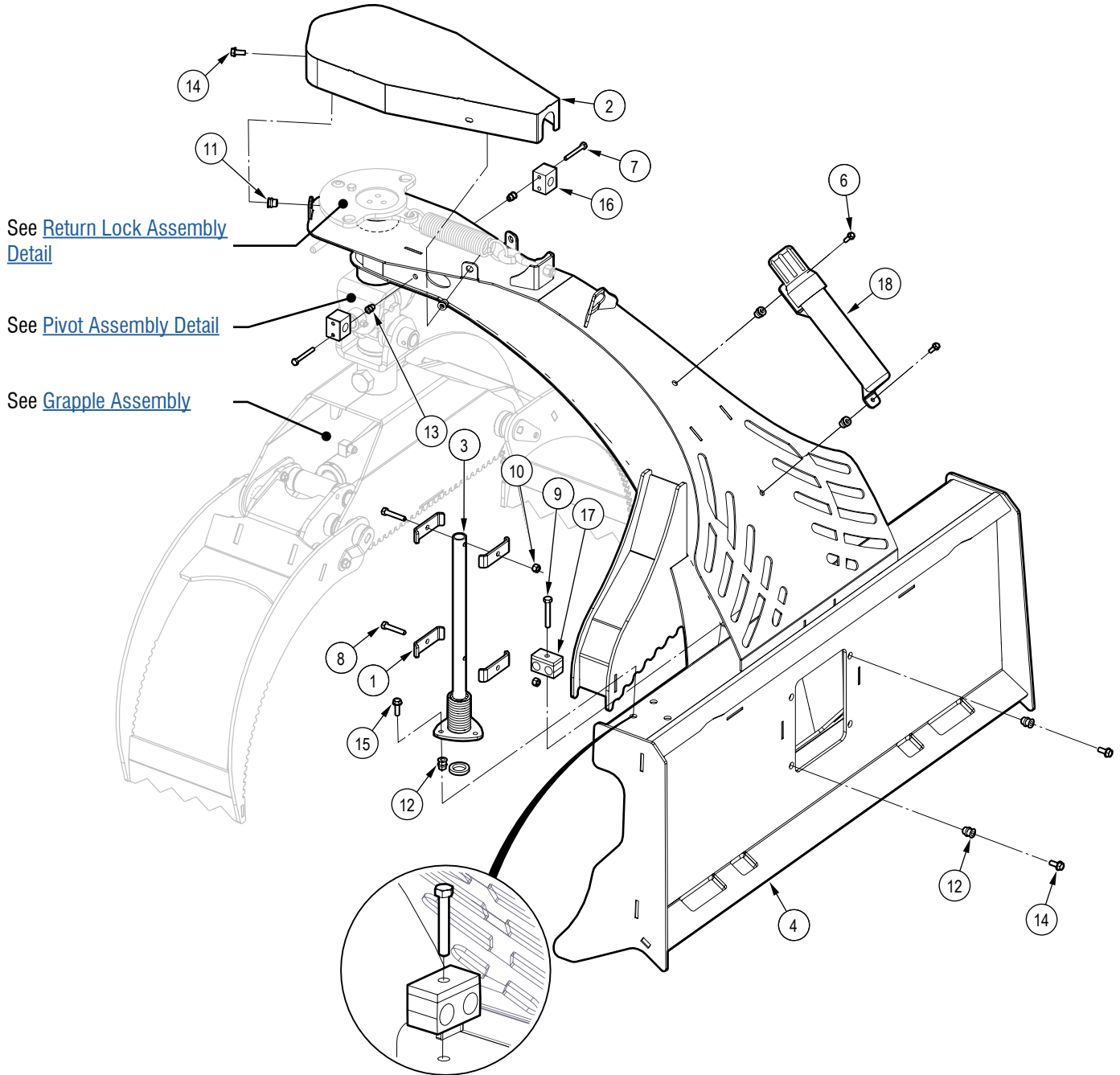


Item	Part number	Description	Quantity
1	3011L176	Clamp, Two Hose	4
2	6016W006	Spring Guard	1
3	6071W102	Hose Mount Whip	1
4	6071W501	Mainframe	1
5	6073L014	Plate, Hydraulic Valve Cover	1
6	Z76111	Flange Bolt, 1/4NC x 3/4"	2
7	Z71122	Hex Bolt, 1/4NC x 2-1/4"	4
8	Z71217	Hex Bolt, 5/16NC x 1-3/4"	2
9	Z71222	Hex Bolt, 5/16NC x 2-1/4"	1
10	Z72221	Hex Lock Nut, 5/16NC	2

Item	Part number	Description	Quantity
11	Z72956	Rivet Nut, 5/16NC x 150	6
12	Z72957	Rivet Nut, 5/16NC x 312	7
13	Z72962	Rivet Nut, 1/4NC x 260	4
14	Z76121	Flange Bolt, 5/16NC x 3/4"	8
15	Z76125	Flange Bolt, 5/16NC x 1"	3
16	Z79454	Single Hose Clamp, 11/16" OD	2
17	Z79463	Double Hose Clamp, 11/16" OD	1
18	Z96505	Manual Tube, 2" Short	1

# Main Parts

Serial number 420S038 to 420S058

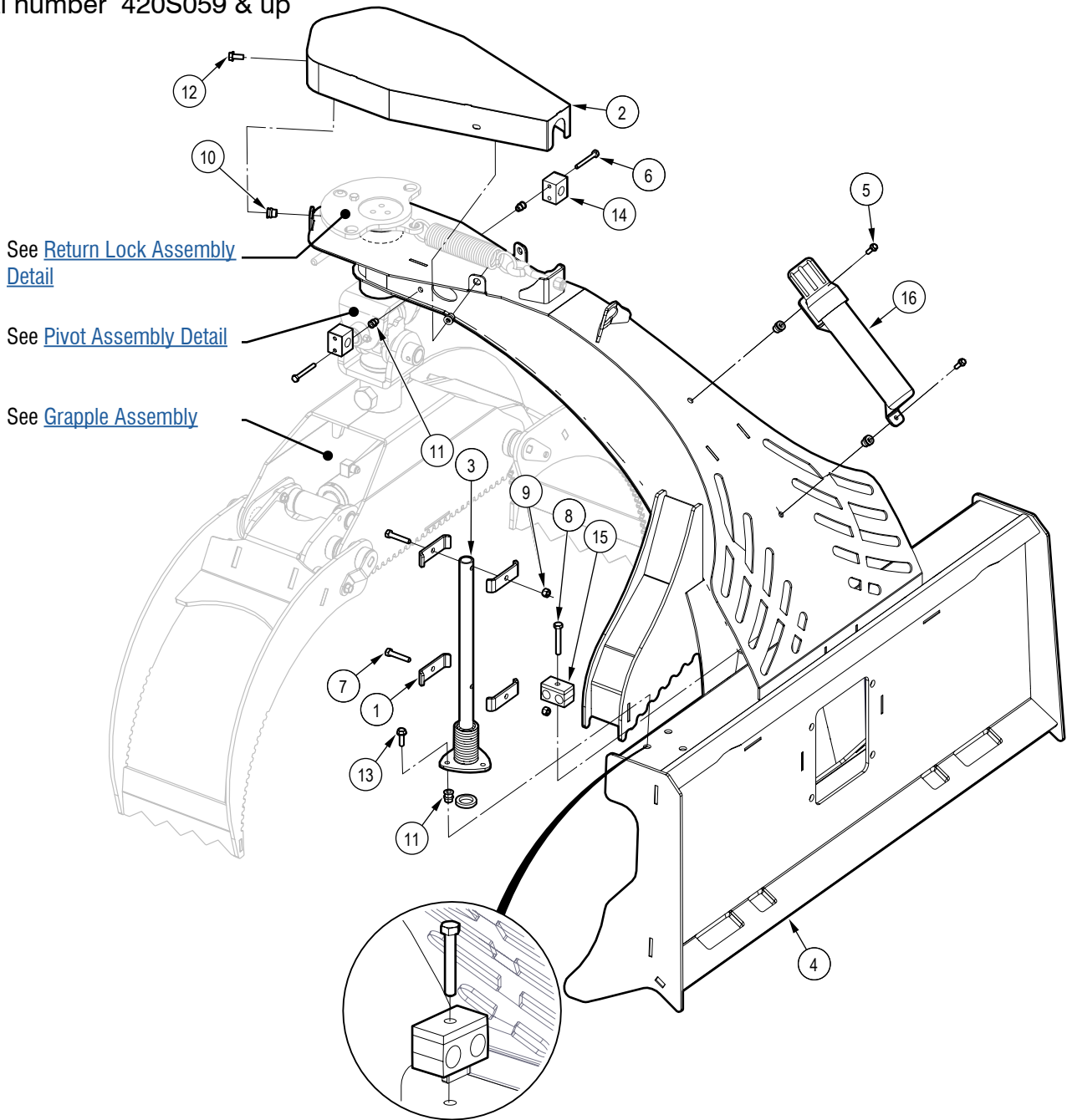


Item	Part number	Description	Quantity
1	3011L176	Clamp, Two Hose	4
2	6016W006	Spring Guard	1
3	6071W102	Hose Mount Whip	1
4	6071W501	Mainframe	1
6	Z76111	Flange Bolt, 1/4NC x 3/4"	2
7	Z71122	Hex Bolt, 1/4NC x 2-1/4"	4
8	Z71217	Hex Bolt, 5/16NC x 1-3/4"	2
9	Z71222	Hex Bolt, 5/16NC x 2-1/4"	1
10	Z72221	Hex Lock Nut, 5/16NC	2
11	Z72956	Rivet Nut, 5/16NC x 150	6

Item	Part number	Description	Quantity
12	Z72957	Rivet Nut, 5/16NC x 312	3
13	Z72962	Rivet Nut, 1/4NC x 260	4
14	Z76121	Flange Bolt, 5/16NC x 3/4"	4
15	Z76125	Flange Bolt, 5/16NC x 1"	3
16	Z79454	Single Hose Clamp, 11/16" OD	2
17	Z79463	Double Hose Clamp, 11/16" OD	1
18	Z96505	Manual Tube, 2" Short	1

# Main Parts Assembly

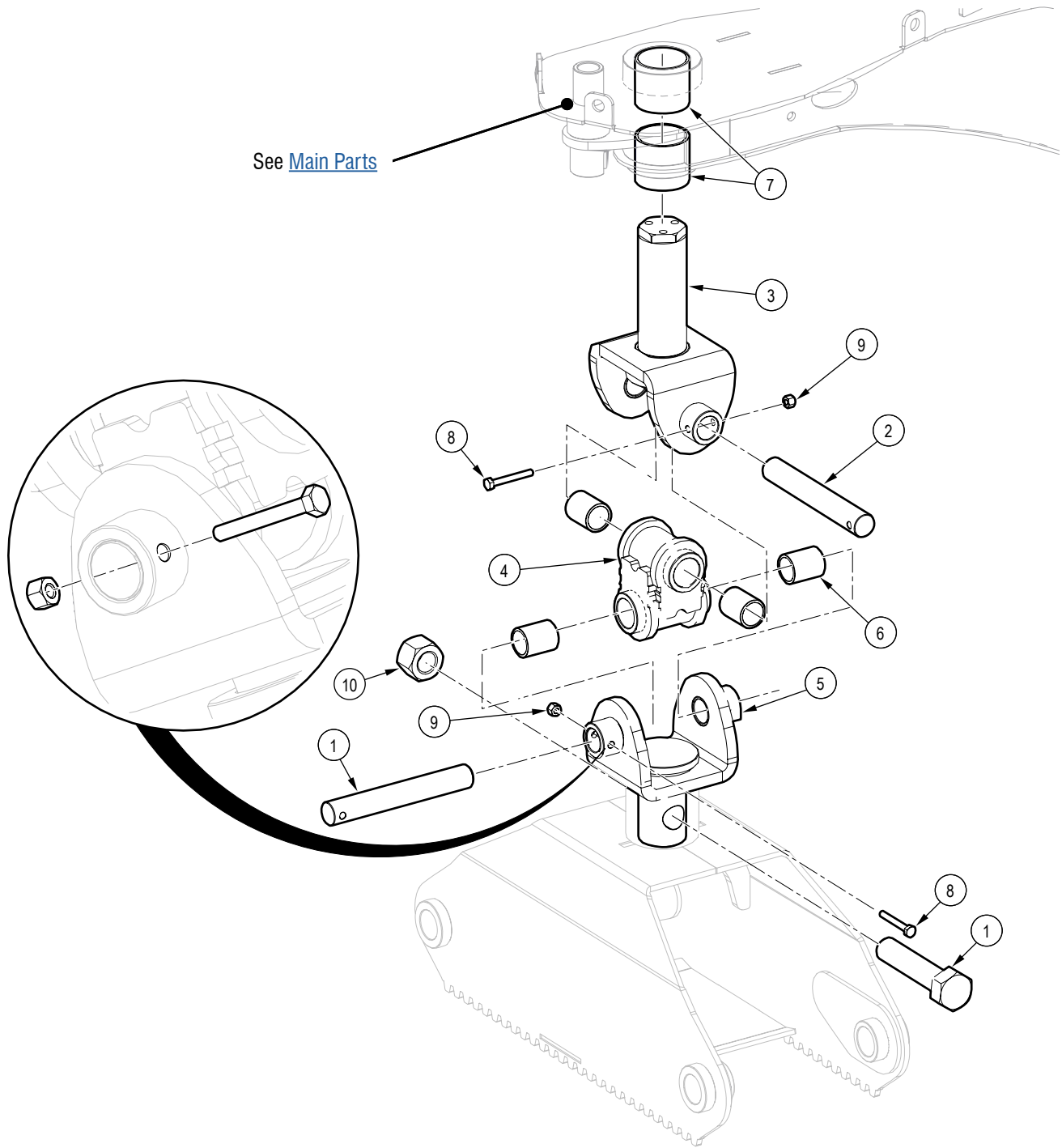
Serial number 420S059 & up



Item	Part number	Description	Quantity
1	3011L176	Clamp, Two Hose	4
2	6016W006	Spring Guard	1
3	6071W102	Hose Mount Whip	1
4	6071W501	Mainframe	1
5	Z76111	Flange Bolt, 1/4NC x 3/4"	2
6	Z71212	Hex Bolt, 5/16NC x 1-1/4"	2
7	Z71217	Hex Bolt, 5/16NC x 1-3/4"	2
8	Z71212	Hex Bolt, 5/16NC x 1-1/4"	1
9	Z72221	Hex Lock Nut, 5/16NC	2

Item	Part number	Description	Quantity
10	Z72956	Rivet Nut, 5/16NC x 150	6
11	Z72957	Rivet Nut, 5/16NC x 312	5
12	Z76121	Flange Bolt, 5/16NC x 3/4"	4
13	Z76125	Flange Bolt, 5/16NC x 1"	3
14	6011L128	Hose Clamp, 1 x 3/8"	2
15	2250L286	Hose Clamp, 2 x 3/8"	2
16	Z96505	Manual Tube, 2" Short	1

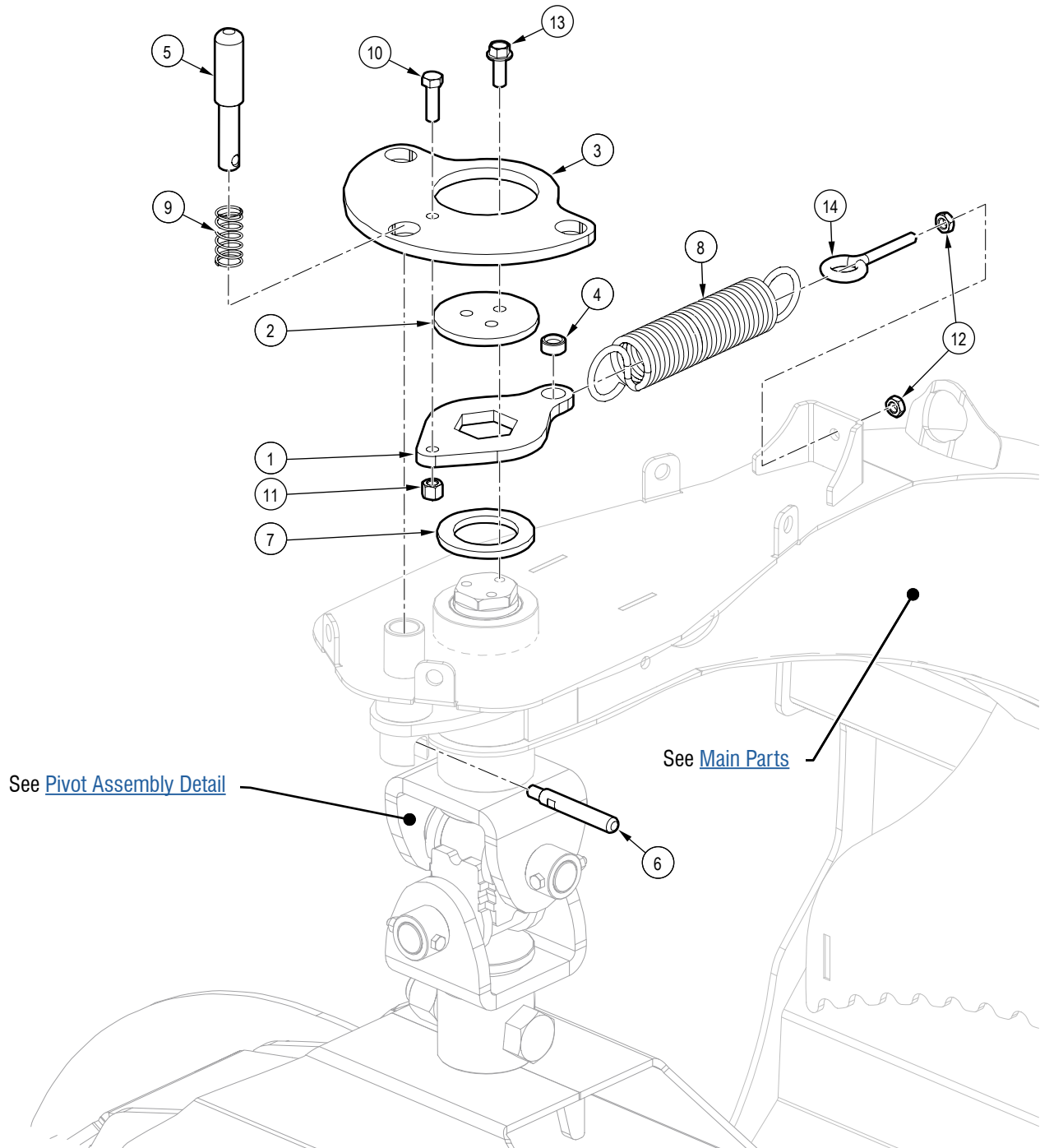
# Pivot Assembly Detail



Item	Part number	Description	Quantity
1	Z71911	Hex Bolt, 1NC x 4-1/2"	1
2	6016M008	Pin, Pivot	2
3	6016W002	Main Pivot	1
4	6016W003	Pivot Link	1
5	6016W004	Grapple Pivot	1
6	Z27109	Composite Bearing, 1" ID x 1-1/2" long x 1/8" Wall	4

Item	Part number	Description	Quantity
7	Z27111	Composite Bearing, 2" ID x 2" long x 1/8" Wall	2
8	Z71120	Hex Bolt, 1/4NC x 2"	2
9	Z72211	Hex Lock Nut, 1/4NC	2
10	Z72291	Hex Lock Nut, 1NC	1

# Return Lock Assembly Detail



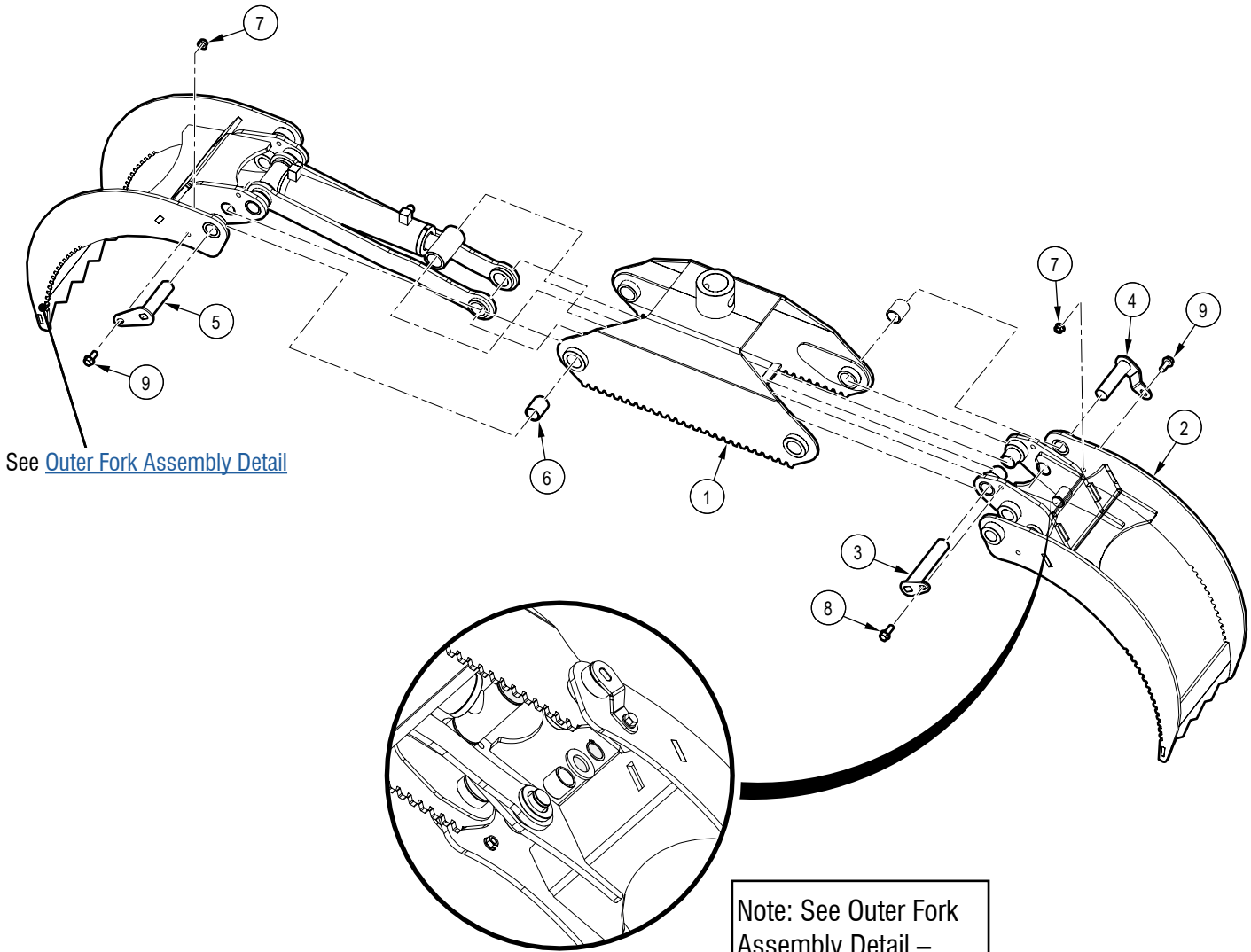
Item	Part number	Description	Quantity
1	6016L002	Plate, Spring Flange	1
2	6016L003	Plate, Main Pivot Keeper	1
3	6016L005	Plate, Lockout Position	1
4	6016M007	Bushing, Spring	1
5	6016M504	Pin, Grapple Lock	1
6	6016M511	Lever, Grapple Lock	1
7	Z22403	Thrust Washer, 2-1/16" ID x 0.236"	1
8	Z31502	Ext Spring, 1-3/4" OD x 9" x .207"	1

Item	Part number	Description	Quantity
9	Z32306	Comp Spring, 0.845" OD x 1-3/4" x 0.068"	1
10	Z71312	Hex Bolt, 3/8NC x 1-1/4"	1
11	Z72231	Hex Lock Nut, 3/8NC	1
12	Z72331	Jam Nut, 3/8NC	2
13	Z76134	Flange Bolt, 3/8NC x 1"	3
14	Z76533	Eye Bolt, 3/8NC x 2-1/2"	1



# Grapple Assembly

Serial number 420S038 to 420S058



See [Outer Fork Assembly Detail](#)

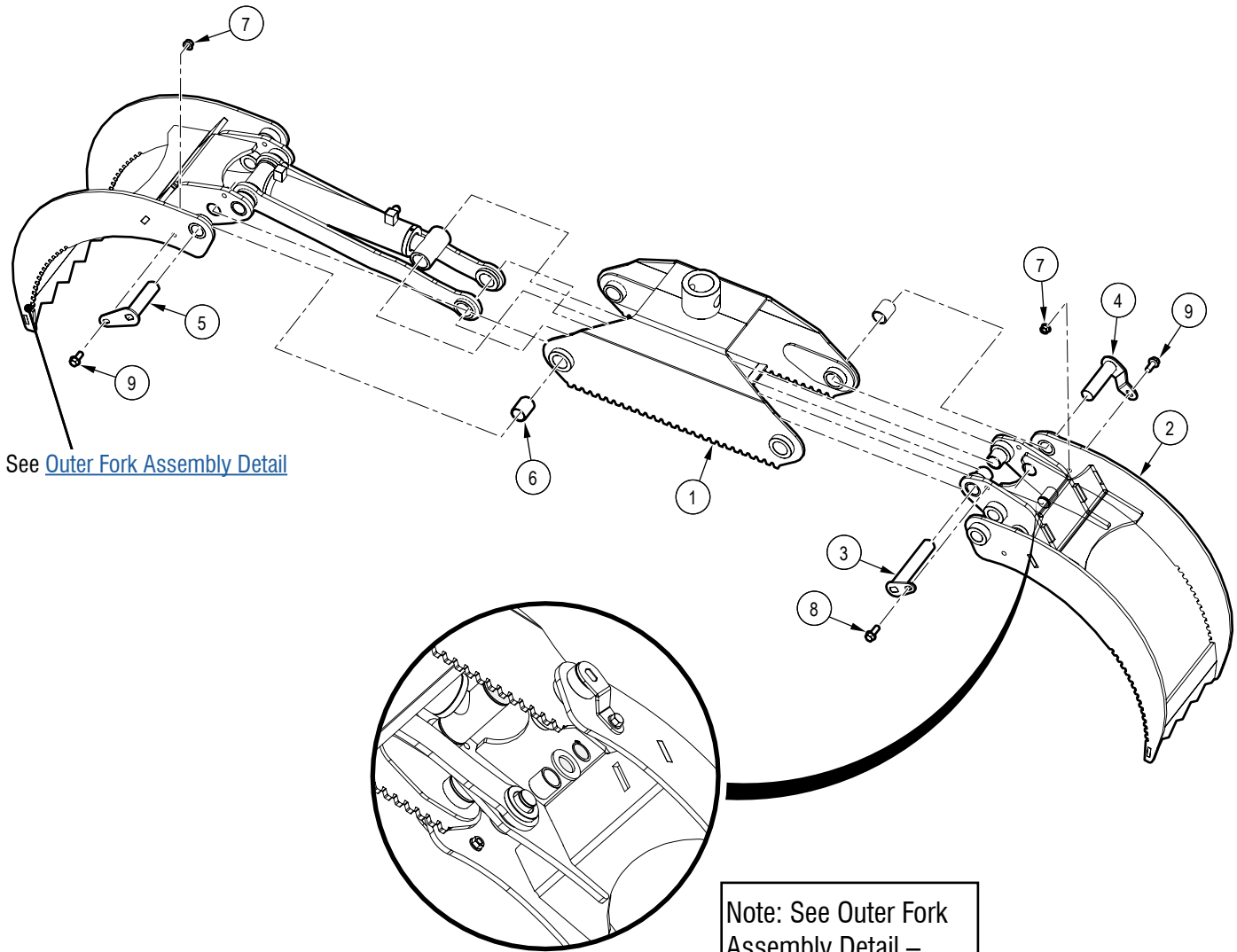
Note: See Outer Fork Assembly Detail – Items 2, 7, and 8

Item	Part number	Description	Quantity
1	6018W001	Grapple Housing	1
2	6018W002	Inner Fork	1
3	6018W010	Short Cylinder Pin	1
4	6018W008	Inner Fork Pin	2
5	6018W009	Outer Fork Pin	2
6	Z27109	Composite Bearing, 1" ID x 1-1/2" long x 1/8" Wall	4

Item	Part number	Description	Quantity
7	Z72531	Serrated Flange Locknut, 3/8NC	5
8	Z76134	Flange Bolt, 3/8NC x 1"	1
9	Z76139	Flange Bolt, 3/8NC x 7/8"	4

# Grapple Assembly

Serial number 420S059 & up



See [Outer Fork Assembly Detail](#)

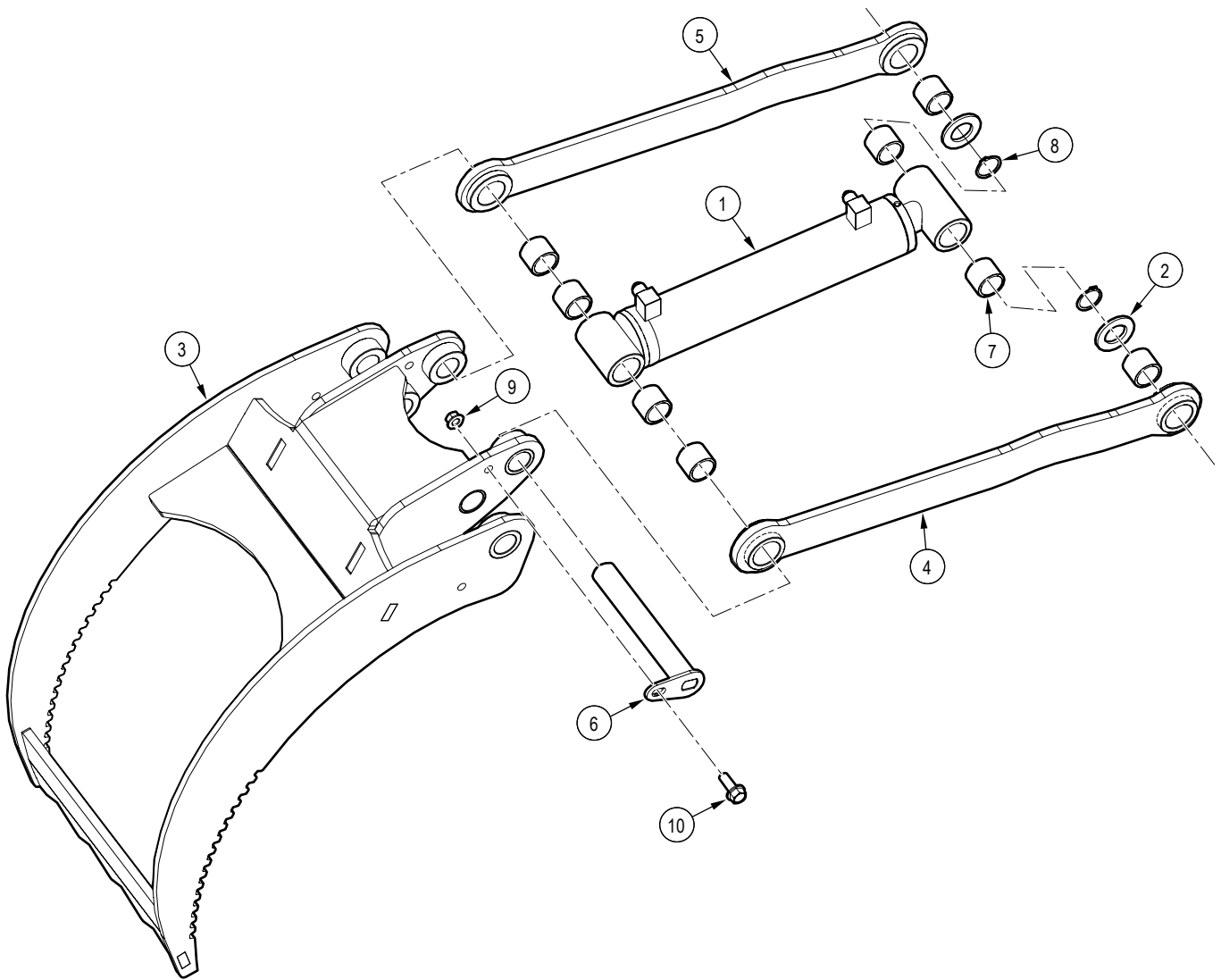
Note: See Outer Fork Assembly Detail – Items 2, 7, and 8

Item	Part number	Description	Quantity
1	6018W001	Grapple Housing	1
2	6018W012	Inner Fork	1
3	6018W010	Short Cylinder Pin	1
4	6018W008	Inner Fork Pin	2
5	6018W009	Outer Fork Pin	2
6	Z27109	Composite Bearing, 1" ID x 1-1/2" long x 1/8" Wall	4

Item	Part number	Description	Quantity
7	Z72531	Serrated Flange Locknut, 3/8NC	5
8	Z76134	Flange Bolt, 3/8NC x 1"	1
9	Z76139	Flange Bolt, 3/8NC x 1"	4

# Outer Fork Assembly Detail

Serial number 420S038 to 420S058

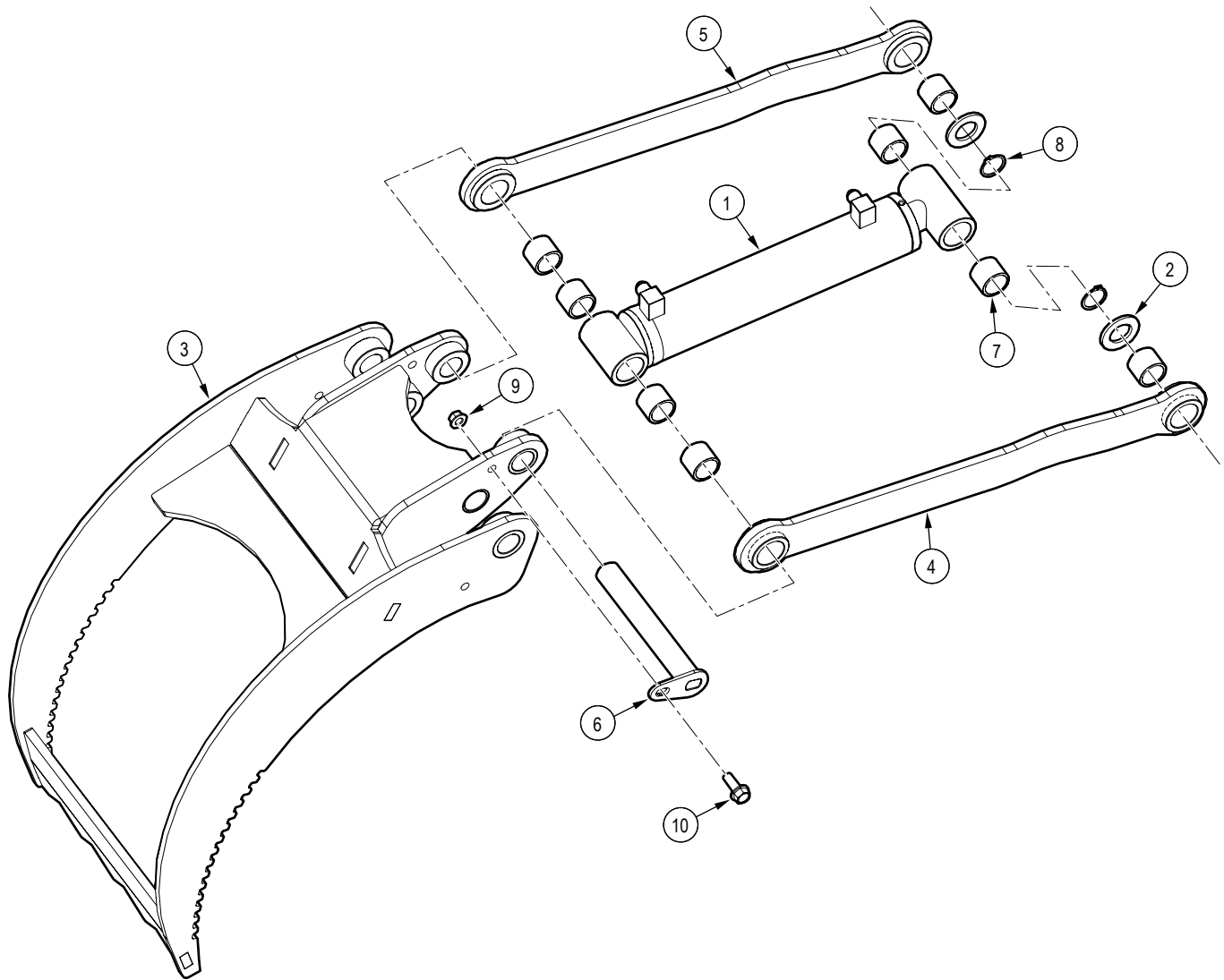


Item	Part number	Description	Quantity
1	6018C001	Cylinder, 2" x 1-1/4" x 8-5/8"	1
2	6018L026	Washer, Linkage Retaining	2
3	6018W003	Outer Fork	1
4	6018W004	Linkage	1
5	6018W004H	Linkage Mirror	1
6	6018W011	Long Cylinder Pin	1

Item	Part number	Description	Quantity
7	Z27110	Composite Bearing, 1" ID x 1" long x 1/8" Wall	8
8	Z46204	External Retaining Ring, 1"	2
9	Z72531	Serrated Flange Locknut, 3/8NC	1
10	Z76134	Flange Bolt, 3/8NC x 1"	1

# Outer Fork Assembly Detail

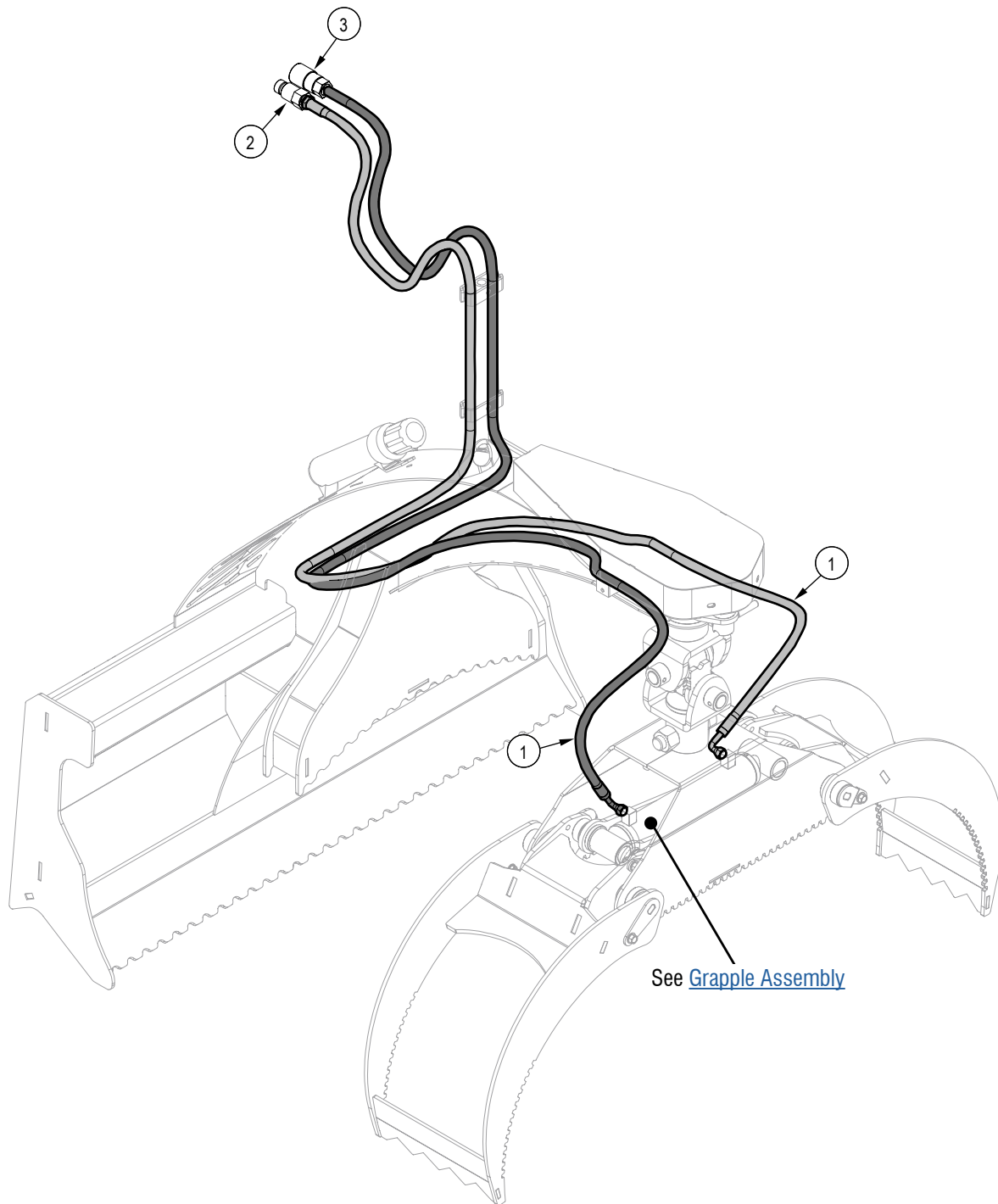
Serial number 420S059 & up



Item	Part number	Description	Quantity
1	6018C001	Cylinder, 2" x 1-1/4" x 8-5/8"	1
2	6018L026	Washer, Linkage Retaining	2
3	6018W013	Outer Fork	1
4	6018W004	Linkage	1
5	6018W004H	Linkage Mirror	1
6	6018W011	Long Cylinder Pin	1

Item	Part number	Description	Quantity
7	Z27110	Composite Bearing, 1" ID x 1" long x 1/8" Wall	8
8	Z46204	External Retaining Ring, 1"	2
9	Z72531	Serrated Flange Locknut, 3/8NC	1
10	Z76134	Flange Bolt, 3/8NC x 1"	1

# Hydraulic Circuit

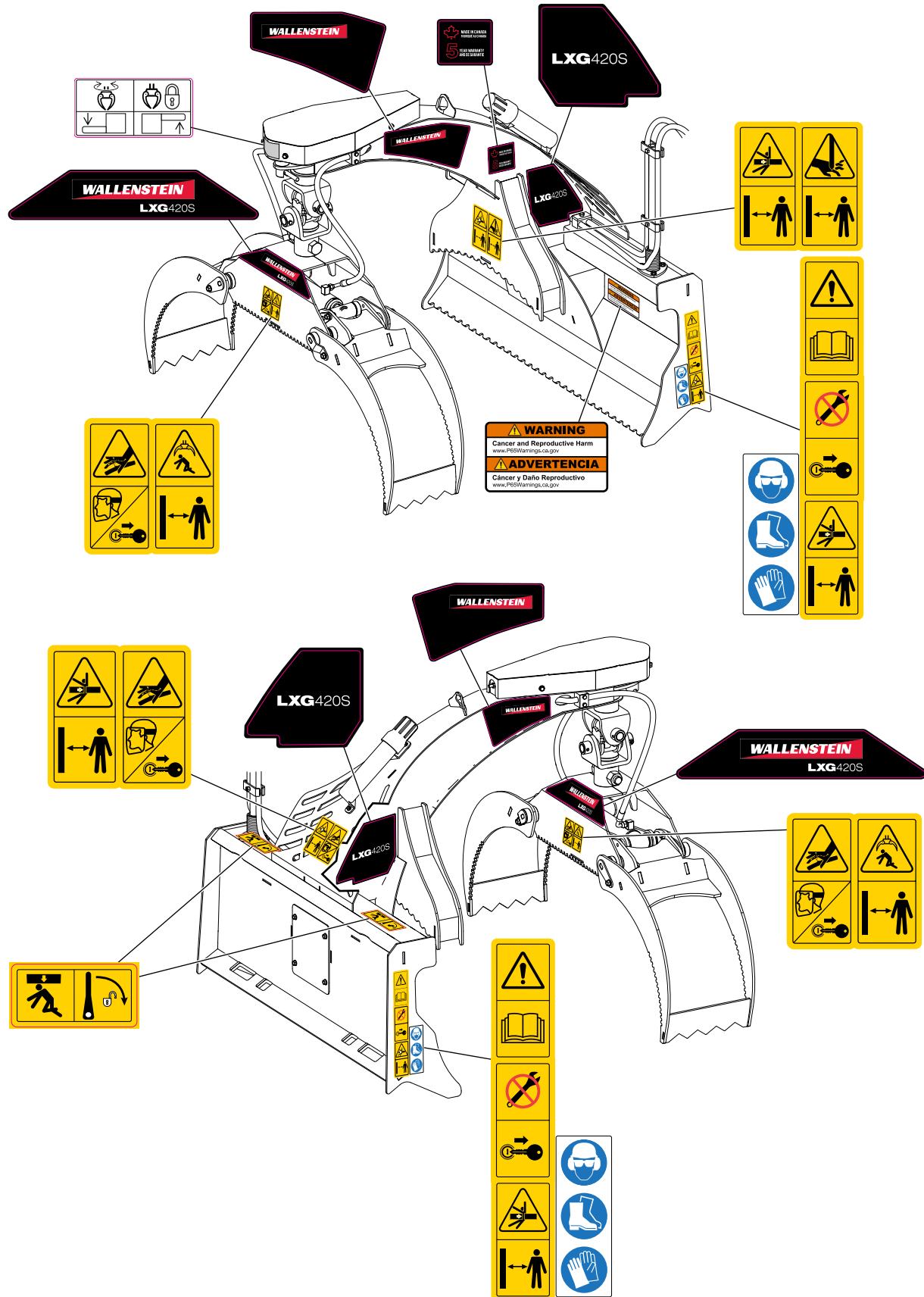


Item	Part number	Description	Quantity
1	6071F501	3/8" Hose, 90FJIC06 x MP08 x 132"	2
2	Z51919	Flat-Face Coupler, FP08 x M ISO 16028	1
3	Z51920	Flat-Face Coupler, FP08 x F ISO 16028	1

# Label Locations

**IMPORTANT! If you replace a part that has a safety label on it, you must apply a new safety label. Immediately replace safety labels that are damaged, have been removed, or are illegible.**

Contact your local Wallenstein Equipment dealer or distributor to order a safety label kit. Labels are not sold individually.



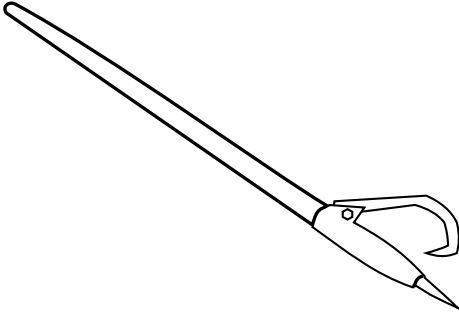
## Accessories

For price and availability, contact your local Wallenstein dealer or distributor.

For accessory installation instructions, go to [WallensteinEquipment.com/Support.aspx](http://WallensteinEquipment.com/Support.aspx), and then select **Accessories**.

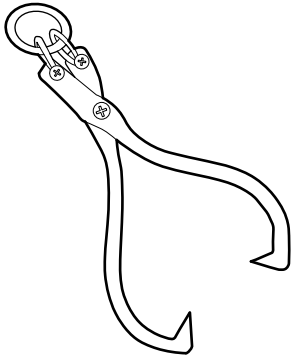
### 48" Log Peavey Z99001

Quality 2 3/8" diameter hardwood handle, with a Western Duck Bill Hook. Helps to move those heavy log timbers into position.



### Skidding Tongs Z99003

Heavy Duty Forged Ring Skidding Tongs  
Maximum Opening: 25"  
Minimum Opening: 4-1/2"  
Tough log skidding tongs are a quick and easy way to skid logs.



## Bolt Torque

**IMPORTANT!** If you replace hardware, use fasteners of the same grade.

**IMPORTANT!** The torque specifications in these tables are for non-greased or non-oiled threads. Do not grease or oil fastener threads unless otherwise indicated. When using a thread lock, increase the specified torque 5%.



Bolt grades are identified by the marks on the bolt head.

The bolt torque specification tables provide the correct torque settings for common bolts and capscrews. Tighten all bolts to the torque that is specified in the table, unless otherwise indicated. Check the bolt tightness periodically.

### Imperial Bolt Torque Specifications

Bolt Diameter	Torque					
	SAE Gr. 2		SAE Gr. 5		SAE Gr. 8	
	lbf•ft	N•m	lbf•ft	N•m	lbf•ft	N•m
<b>1/4 inch</b>	6	8	9	12	12	17
<b>5/16 inch</b>	10	13	19	25	27	36
<b>3/8 inch</b>	20	27	33	45	45	63
<b>7/16 inch</b>	30	41	53	72	75	100
<b>1/2 inch</b>	45	61	80	110	115	155
<b>9/16 inch</b>	60	95	115	155	165	220
<b>5/8 inch</b>	95	128	160	215	220	305
<b>3/4 inch</b>	165	225	290	390	400	540
<b>7/8 inch</b>	170	230	420	570	650	880



SAE Gr. 2



SAE Gr. 5



SAE Gr. 8

### Metric Bolt Torque Specifications

Bolt Diameter	Torque			
	Gr. 8.8		Gr. 10.9	
	lbf•ft	N•m	lbf•ft	N•m
<b>M3</b>	0.4	0.5	1.3	1.8
<b>M4</b>	2.2	3	3.3	4.5
<b>M6</b>	7	10	11	15
<b>M8</b>	18	25	26	35
<b>M10</b>	37	50	52	70
<b>M12</b>	66	90	92	125
<b>M14</b>	83	112	116	158
<b>M16</b>	166	225	229	310
<b>M20</b>	321	435	450	610
<b>M30</b>	1,103	1,495	1,550	2,100



8.8



10.9



## Hydraulic Fitting Torque

Tighten flare-type tube fittings:

1. Check the flare and flare seat for defects that might cause leaks.
2. Align the tube with the fitting before tightening.
3. Hand-tighten the swivel nut until it is snug.
4. To prevent the tube from twisting, use two wrenches. Place one wrench on the connector body and tighten the swivel nut with the second wrench. Torque the fitting to the correct specification.

If a torque wrench is not available, use the flats from finger tight (FFFT) method.

Hydraulic Fitting Torque Specifications					
Tube size OD	Hex size across flats	Torque		Flats from finger tight	
		lbf•ft	N•m	Flats	Turns
Inches	Inches				
3/16	7/16	6	8	2	1/6
1/4	9/16	11–12	15–17	2	1/6
5/16	5/8	14–16	19–22	2	1/6
3/8	11/16	20–22	27–30	1-1/4	1/6
1/2	7/8	44–48	59–65	1	1/6
5/8	1	50–58	68–79	1	1/6
3/4	1-1/4	79–88	107–119	1	1/8
1	1-5/8	117–125	158–170	1	1/8

Specifications are for non-lubricated connections.



**MAKING WORK FEEL MORE LIKE PLAY™**

[WallensteinEquipment.com](http://WallensteinEquipment.com)

