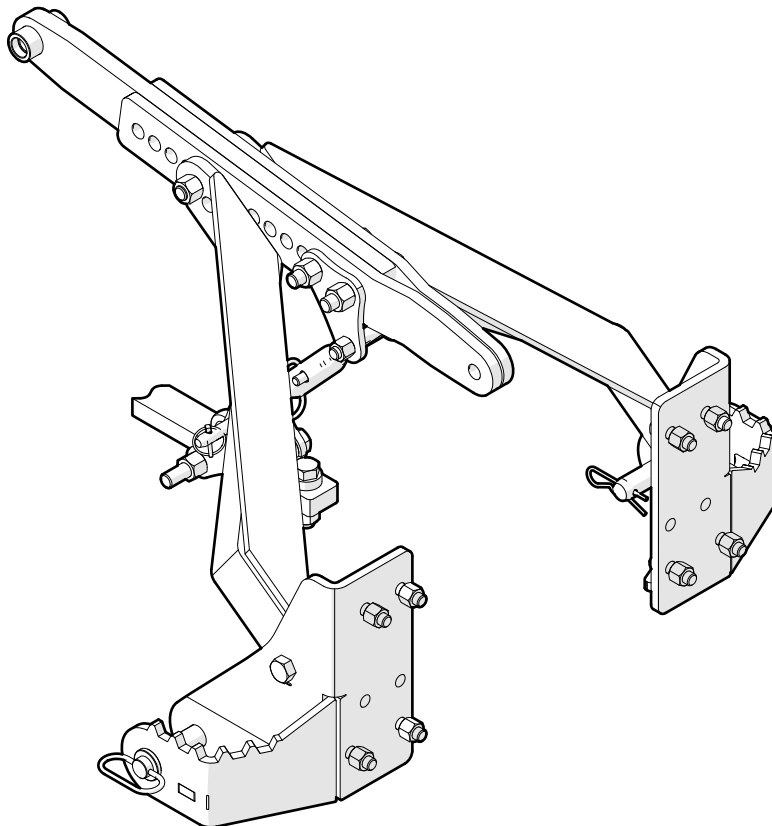


# INSTALLATION INSTRUCTIONS

---

## PT322 Backhoe 3-point Hitch Adaptor Kit

Adapts Wallenstein GX720, GX920 and GX920XT Backhoes  
for 3-point Hitch Installation on CAT II Tractors



# Safety

## Safety Alert Symbol

This Symbol means:

### ATTENTION! BE ALERT! YOUR SAFETY IS INVOLVED!

The Safety Alert Symbol identifies important safety messages on the Wallenstein product and in the manual.

When you see this symbol, be alert to the possibility of personal injury or death! Follow the instructions in the safety message.



## Signal Words

The signal words **DANGER**, **WARNING** and **CAUTION** determine the seriousness level of the warning messages in this manual. The appropriate signal word for each message in this manual has been selected using the following guidelines:

### DANGER –

Indicates an imminently hazardous situation that, if not avoided, **will** result in death or serious injury. This signal word is to be limited to the most extreme situations typically for machine components which, for functional purposes, cannot be guarded.

### WARNING –

Indicates a potentially hazardous situation that, if not avoided, **could** result in death or serious injury, and includes hazards that are exposed when guards are removed. It may also be used to alert against unsafe practices.

### CAUTION –

Indicates a potentially hazardous situation that, if not avoided, **may** result in minor or moderate injury. It may also be used to alert against unsafe practices.

**IMPORTANT** – To avoid confusing equipment protection with personal safety messages, a signal word **IMPORTANT** indicates a situation that if not avoided, could result in damage to the machine.

## Equipment Operation

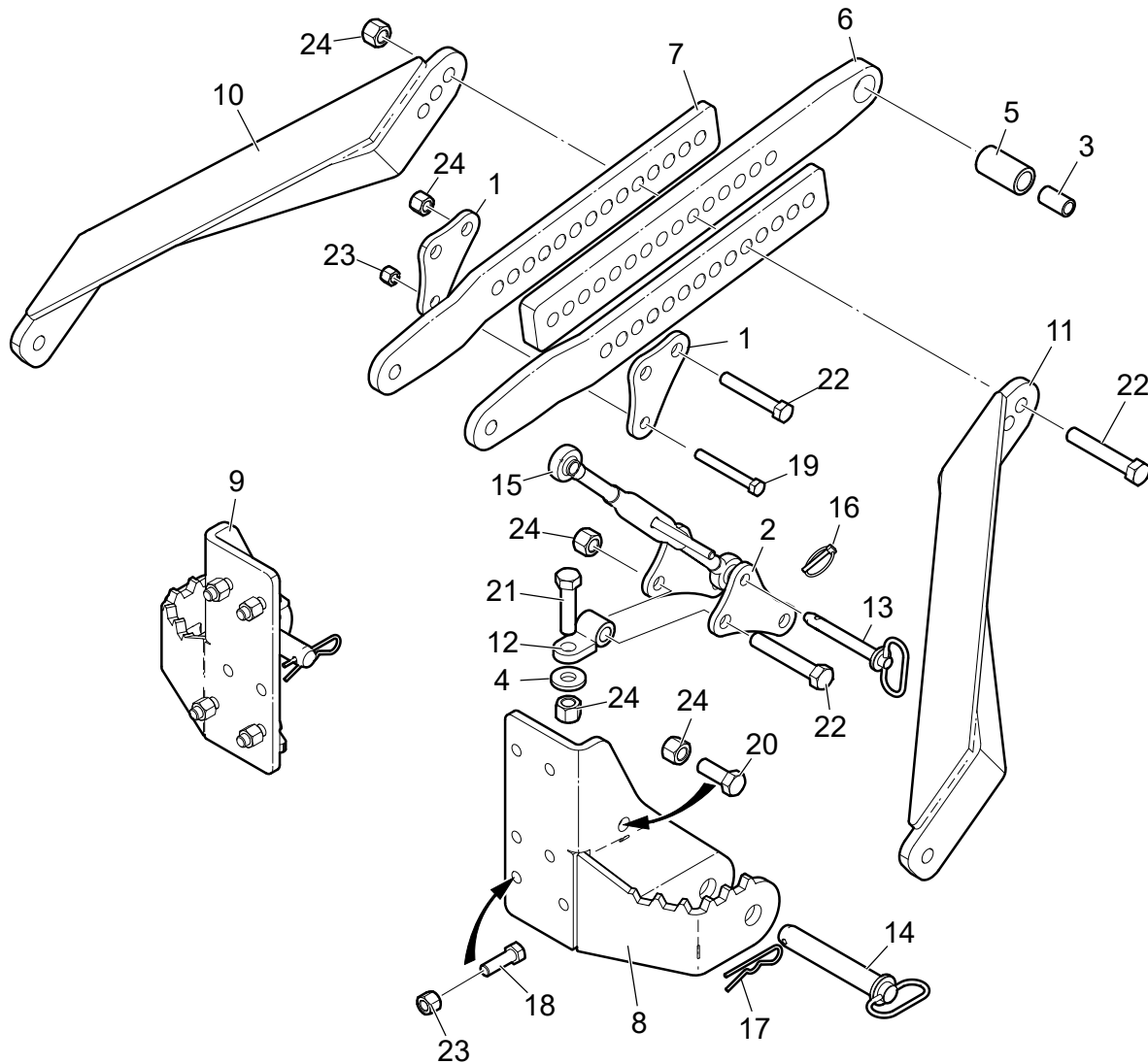


**Avoid the risk of personal injury or machine damage! Read the operator's manual before using this equipment. Carefully read all safety messages in the manual and follow all safety signs on the machine.**

## Operator Orientation

The directions left, right, front and rear as mentioned throughout this instruction, are determined when sitting in the tractor driver's seat, facing the direction of forward travel.

# PT322 Three Point Hitch Adaptor Kit Parts



ITEM	PARTNO.	DESCRIPTION	Q.TY
1	3041L213	Plate, Upper Linkage	2
2	3041L214	Plate, Lower Linkage	2
3	3041M201	Bushing, Drawbar Tab	1
4	3042L108	Washer, Drawbar	1
5	3042M102	Bushing, Top Link	1
6	3042S101	Tieback, Center	1
7	3042S102	Tieback, Side	2
8	3042W101	Bracket, Backhoe LH	1
9	3042W102	Bracket, Backhoe RH	1
10	3042W103	Strut, Backhoe RH	1
11	3042W104	Strut, Backhoe LH	1
12	3042W105	Tab, Drawbar	1
13	Z11232	Hitch Pin, 5/8" x 4-1/4"	1
14	Z11271	Hitch Pin, 1-1/8" x 6-1/4"	2
15	Z11501	Toplink, Cat 0 x 10-1/2" x 16"	1
16	Z12110	Lynch Pin, 3/16"	1
17	Z12250	Hitch Pin Clip, 3/16" x 4"	2
18	Z11620	Hex Bolt, 5/8NC x 2"	8
19	Z11640	Hex Bolt, 5/8NC x 4"	1
20	Z11720	Hex Bolt, 3/4NC x 2"	2
21	Z11730	Hex Bolt, 3/4NC x 3"	1
22	Z11745	Hex Bolt, 3/4NC x 4-1/2"	5
23	Z12261	Hex Lock Nut, 5/8NC	9
24	Z12271	Hex Lock Nut, 3/4NC	8

# Installation Instructions

## CAUTION!

Risk of a hazardous situation if kit is installed improperly or modified in any way. Damage to the machine could result. Read and follow all installation and setup instructions.

W091

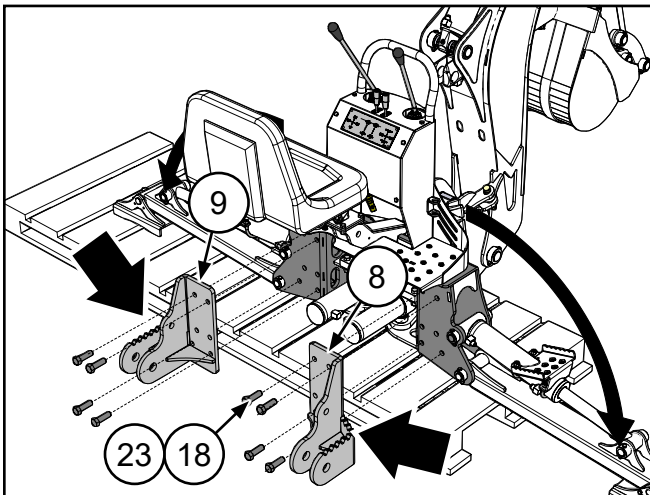
The assembly of the **PT322** Kit depends on the 3-point hitch configuration of your tractor. Illustrations in this document show typical assembly method. This procedure is one-time only. Normal 3-point hook up procedure can follow once your 3-point hitch is set up.

## Preparation

- Basic shop tools are required, including 15/16" and 1-1/8" wrenches and sockets.
- Make sure the tractor and the area around it is clean and free of debris. Park on dry, level ground with the brake applied and the engine shut off. Place the PT322 kit on the ground behind the 3-point hitch.
- Leave backhoe on the shipping skid.

## Step 1

- On the backhoe skid, unclip the safety catches (if equipped) from the backhoe stabilizer arms.
- On the backhoe control valve, push the stabilizer control levers forward (to allow oil to cycle through the control valve) while manually pushing each stabilizer arm down.
- Assemble left- and right-hand backhoe brackets (items 8 and 9) to the backhoe. Use 4 each of **Z71620** 5/8"NC x 2" (item 18) and **Z72261** 5/8"NC Locknut (item 23).
- Torque-tighten to 180 lbf•ft (215 N•m).



## Step 2

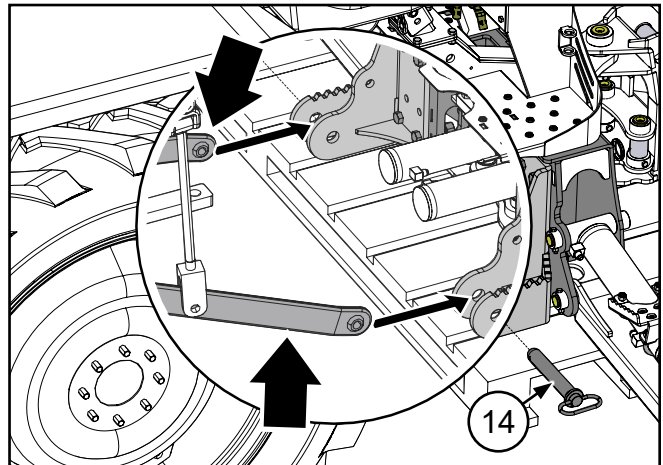
## WARNING!

Never let anyone stand between the tractor and the implement during hitching. Too fast of an approach or the operator's foot slipping from the clutch can lead to injury or fatality to the person standing nearby.

W048

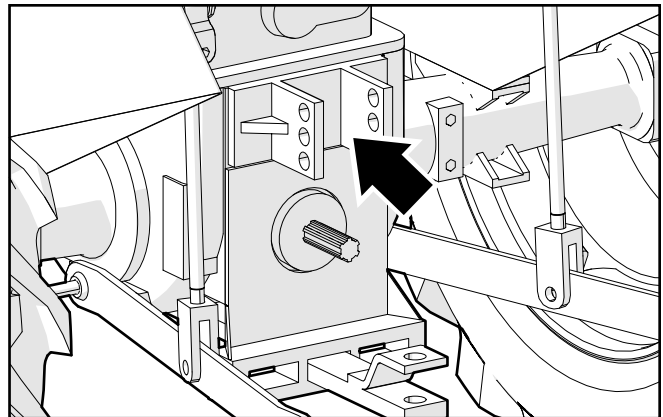
Start the tractor and carefully back up to the backhoe. Attach the tractor lower lift arms to the left- and right-hand backhoe brackets. Use **Z11271** 1-1/8" Hitch Pin (item 14) and **Z12250** Hitch Pin Clip (item 17).

Connect the backhoe pressure and return hydraulic lines to the tractor.



## Step 3

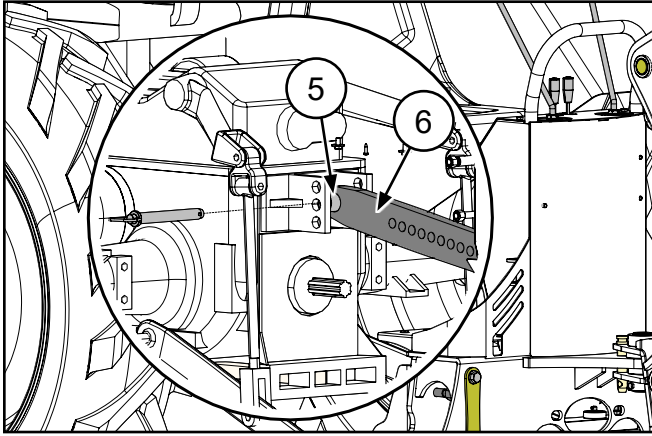
Remove the tractor's toplink and pin. Check to see if **3042M102** Toplink Bushing (item 5) can fit inside the tractor's top link mount. If the bushing is too wide, it needs to be cut to fit for Step 4.



**Step 4**

Attach **3042S101** Center Tieback (item 6) and **3042M102** Toplink Bushing (item 5) to the tractor top link mount using the tractor's hitch pin.

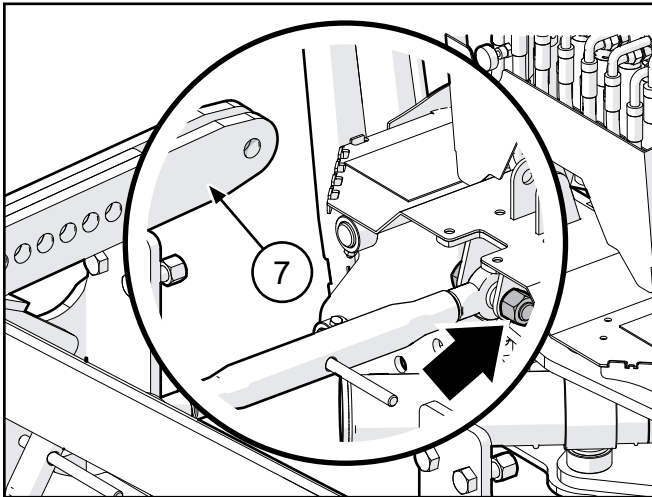
Use **3041M201** 3/4" bushing (item 3) to step down to a smaller pin diameter, if required.



**Step 5**

Assemble the two **3042S102** Side Tieback bars (item 7) to backhoe top link mount (see arrow). Remove the toplink turnbuckle and bolt from the backhoe. Use that bolt to secure the Side Tieback bars.

(The toplink supplied with the backhoe is not required with the Three-point Hitch Kit.)



**Step 6**

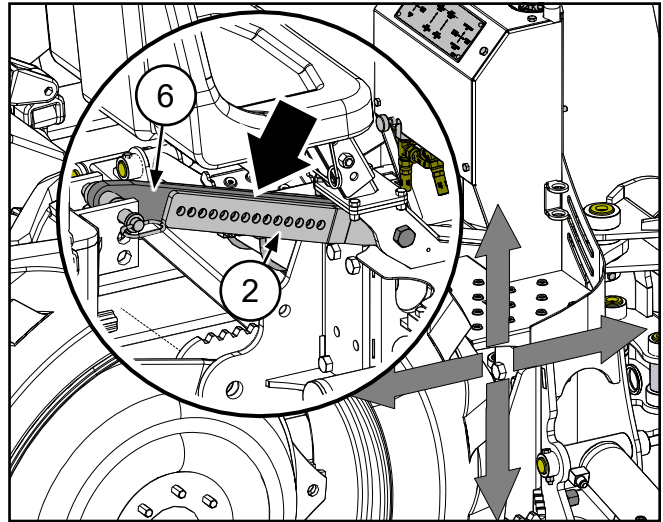
**! WARNING!**

**Risk of crushing hazard. The operator must be safely positioned in the seat before operating the backhoe. Clear the area of bystanders.**

W058

Start the tractor and raise the lower link arms so the bottom of the backhoe is approximately 13" (330 mm) off the ground.

Use the backhoe boom and stabilizers to align the Center Link (item 6) and Side Tieback bars (item 7) for Step 7.



**IMPORTANT!** Make sure the backhoe is straight (aligned with the tractor) and level.

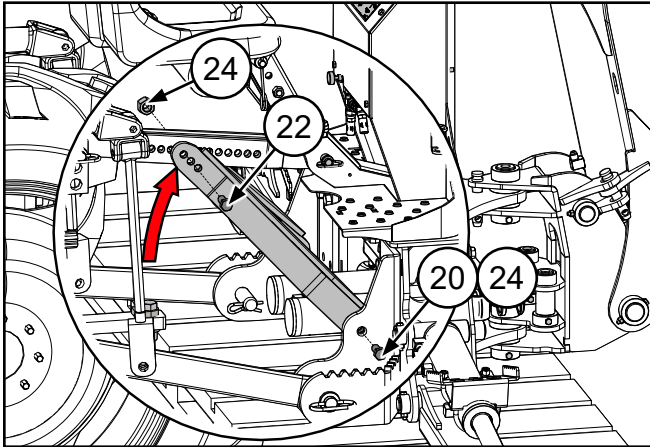
**! WARNING!**

**Do not risk machine moving unexpectedly. Apply parking brake and turn engine off before proceeding.**

### Step 7

Once the backhoe is straight and level and the Center Link and Side Tieback Bars are aligned, loosely bolt them together with **3042W103** RH Backhoe Strut (item 10) and **3042W104** LH backhoe Strut (item 11) using **Z71745** 3/4"NC x 4-1/2" hex head bolts (item 22) and **Z72271** 3/4" hex locknuts (item 24).

Bolt the opposite end of the struts to the backhoe brackets with **Z71720** 3/4"NC x 2" hex head bolts (item 20) and **Z72271** 3/4" hex locknuts (item 24).

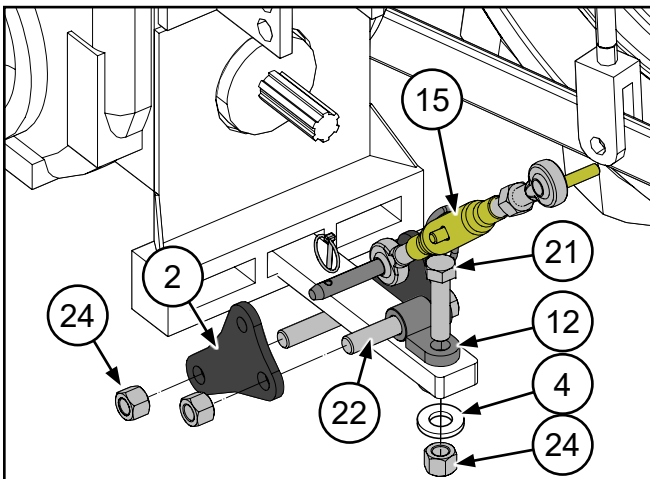


If a PTO Hydraulic Power Pack is being used with the backhoe, the drawbar brace cannot be installed. Skip Steps 8–10.

### Step 8

Assemble two **3041L214** Lower Linkage Plates (item 2) to the tractor's draw bar as shown. Use three **Z71745** 3/4"NC x 4-1/2" hex head bolts (item 22) and **Z72271** 3/4" hex locknuts (item 24). Assemble with **3042W105** Drawbar Tab (item 12).

Fasten Drawbar Tab (item 12) to the tractor's swinging drawbar with **Z71730** 3/4"NC x 3" hex head bolt (item 21), **3042L2108** Drawbar Washer (item 4), and **Z72271** 3/4" hex locknuts (item 24).

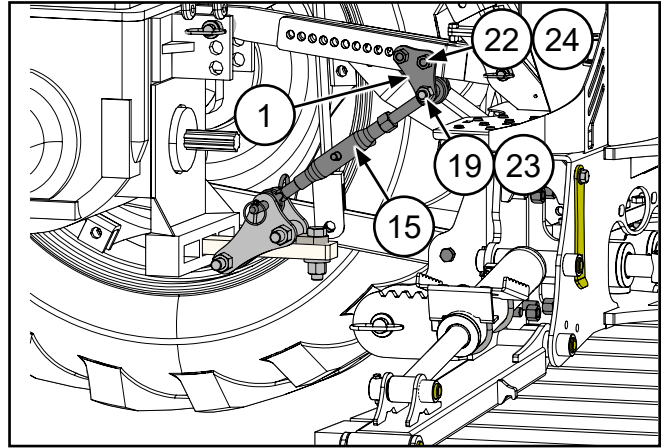


### Step 9

Assemble **3041L213** Upper Linkage Plates (item 1) to the tie back assembly as shown below. Use two **Z71745** 3/4"NC x 4-1/2" hex head bolts (item 22) and **Z72271** 3/4" hex locknuts (item 24).

### Step 10

Attach **Z11501** Toplink (item 15) to the upper linkage plates with **Z71640** 5/8"NC x 4" hex head bolt (item 19) and **Z72261** 5/8"NC hex locknut (item 23).



### Step 11

Check once more that your backhoe is straight and level. Adjust if required and snug up the turnbuckle.

### Step 12

Tighten up all the bolts to finalize the assembly.

### Step 13

Check backhoe functions:

- start the tractor
- lower the stabilizers
- check all functions of the backhoe
- double-check all fasteners and three-point hitch is solidly attached and secure



## LIMITED WARRANTY

Wallenstein products are warranted to be free of defects in materials and workmanship under normal use and service, for a period of

**Five Years for Consumer Use**

**Two Years for Commercial/Rental Use**

from the date of purchase, when operated and maintained in accordance with the operating and maintenance instructions supplied with the unit. Warranty is limited to the repair of the product and/or replacement of parts.

This warranty is extended only to the original purchaser and is not transferable.

Repairs must be done by an authorized dealer. Products will be returned to the dealer at the customer's expense. Include the original purchase receipt with any claim.

**This warranty does not cover the following:**

- 1) Normal maintenance or adjustments
- 2) Normal replacement of wearable and service parts
- 3) Consequential damage, indirect damage, or loss of profits
- 4) Damages resulting from:
  - Misuse, negligence, accident, theft or fire
  - Use of improper or insufficient fuel, fluids or lubricants
  - Use of parts or aftermarket accessories other than genuine Wallenstein parts
  - Modifications, alteration, tampering or improper repair performed by parties other than an authorized dealer
  - Any device or accessories installed by parties other than an authorized dealer
- 5) Engines. Engines are covered by the manufacturer of the engine for the warranty period they specify. For the details of your engine warranty, see your engine owner's manual. Information about engine warranty and service is also available in the FAQ section at [www.wallensteinequipment.com](http://www.wallensteinequipment.com)


# Common Bolt Torque values

## Checking Bolt Torque

The tables shown give correct torque values for various bolts and capscrews. Tighten all bolts to the torque values specified in the table, unless indicated otherwise. Check tightness of bolts periodically.

**IMPORTANT!** If replacing hardware, use fasteners of the same grade.

**IMPORTANT!** Torque figures indicated in the table are for non-greased or non-oiled threads. Do not grease or oil threads unless indicated otherwise. When using a thread locker, increase torque values by 5%.

 **NOTE:** Bolt grades are identified by their head markings.

Imperial Bolt Torque Specifications						
Bolt Diameter	Torque Value					
	SAE Gr. 2		SAE Gr. 5		SAE Gr. 8	
	lbf•ft	N•m	lbf•ft	N•m	lbf•ft	N•m
1/4"	6	8	9	12	12	17
5/16"	10	13	19	25	27	36
3/8"	20	27	33	45	45	63
7/16"	30	41	53	72	75	100
1/2"	45	61	80	110	115	155
9/16"	60	95	115	155	165	220
5/8"	95	128	160	215	220	305
3/4"	165	225	290	390	400	540
7/8"	170	230	420	570	650	880
1"	225	345	630	850	970	1320



Metric Bolt Torque Specifications				
Bolt Diameter	Torque Value			
	Gr. 8.8		Gr. 10.9	
	lbf•ft	N•m	lbf•ft	N•m
M3	0.4	0.5	1.3	1.8
M4	2.2	3	3.3	4.5
M6	7	10	11	15
M8	18	25	26	35
M10	37	50	52	70
M12	66	90	92	125
M14	83	112	116	158
M16	166	225	229	310
M20	321	435	450	610
M30	1,103	1 495	1,550	2 100







[WallensteinEquipment.com](http://WallensteinEquipment.com)