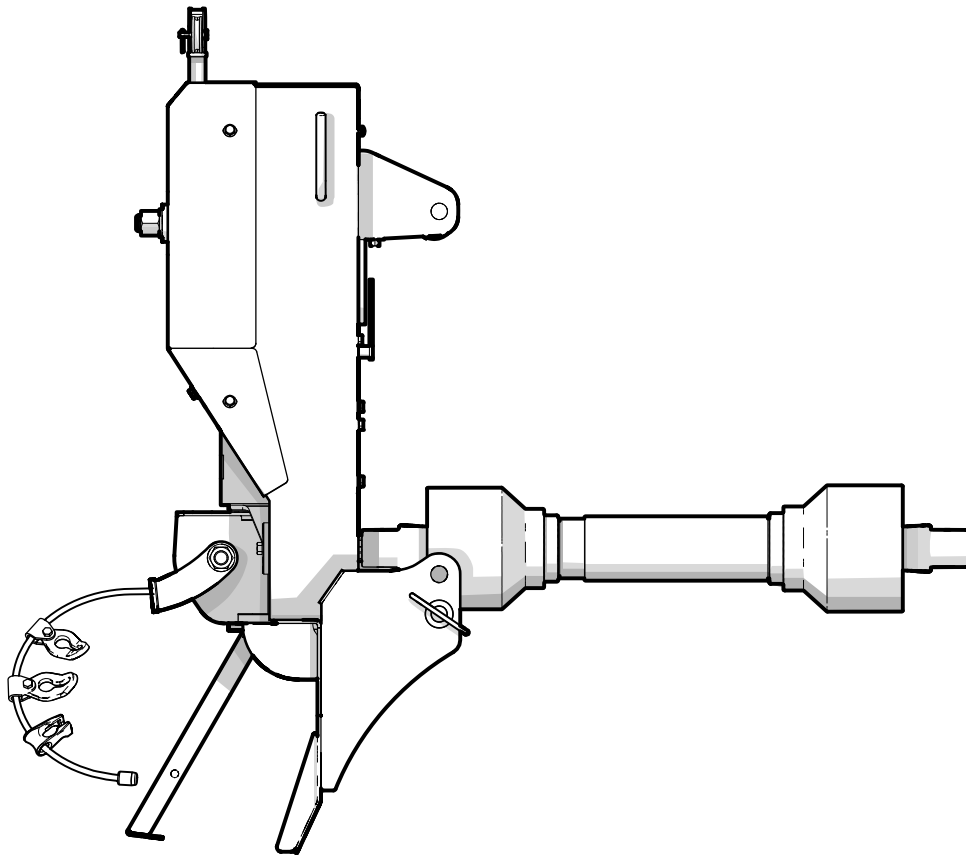


PARTS MANUAL

Serial Number 5401 & up

FX40 PTO-Driven Log Skidding Winch



Foreword

This Wallenstein parts manual is prepared to assist customers in ordering quality OEM replacement parts.

Regular maintenance combined with replacing old, worn or broken parts with the correct OEM parts is essential in prolonging the life of your Wallenstein product. Refer to this manual to identify replacement parts.

To order parts, contact your Wallenstein dealer or distributor. Have the product model and serial number handy.

If your dealer is no longer available, please go to WallensteinEquipment.com. At the bottom of the page, select Dealer Locator.

All information contained in this parts manual is current as per the revision date at the bottom of the page. Wallenstein reserves the right to change product specifications at any time without notice.

If your product specifications differ from those contained in this manual, contact Wallenstein for current information.

Reproduction of information in this parts manual is prohibited without prior written permission from Wallenstein Equipment Inc.

Wallenstein Equipment Inc. • © 2023

! WARNING!

For safety, operation, and maintenance information, see the Operator's Manual.

Maintenance should be performed by trained personnel only.

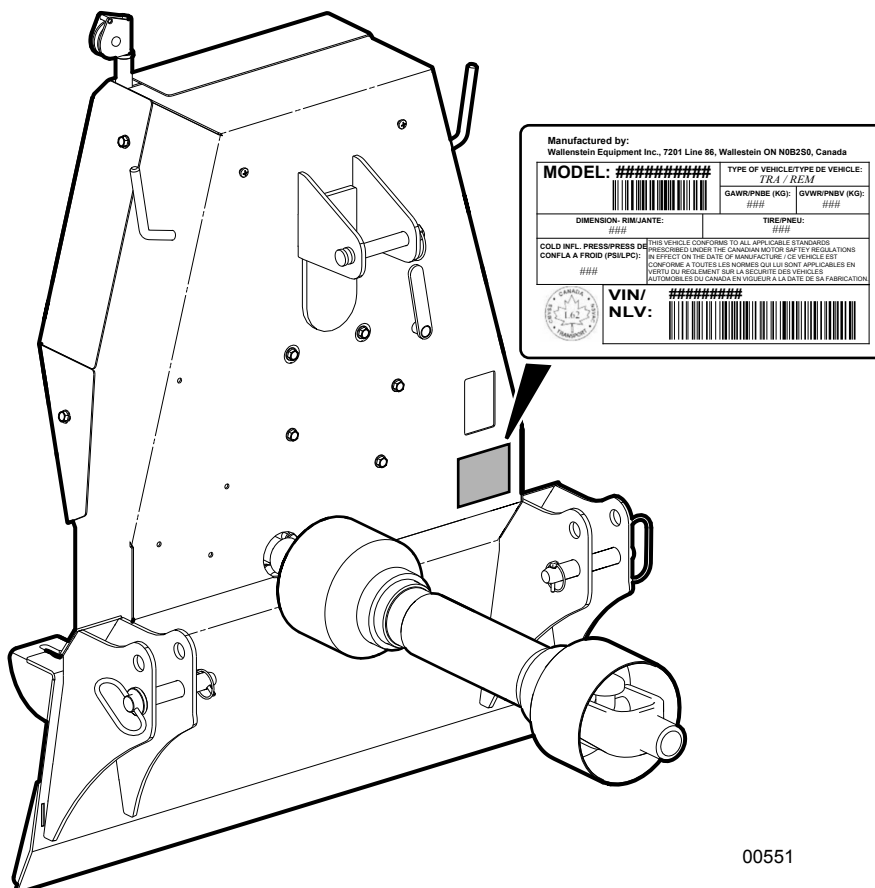
Serial Number Location

Always provide the model and serial number of your Wallenstein product when ordering parts or requesting service or other information. The serial number is on the product information plate as shown below.

Record your product information here for future reference.

Model _____

Serial Number _____



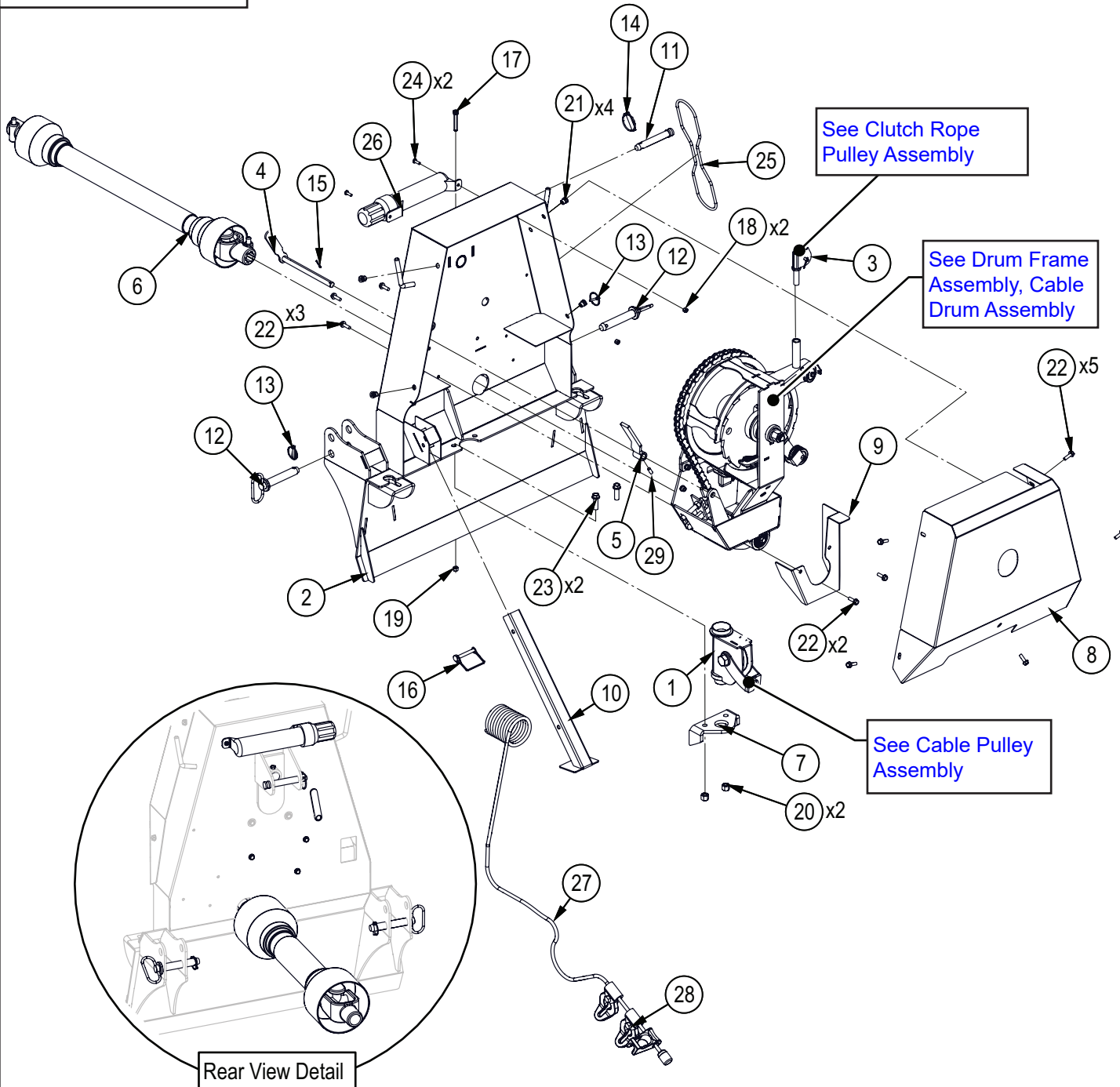
00551

www.wallensteinequipment.com

Contents

Main Parts	4
Drum Frame Assembly	5
Cable Drum Assembly	6
Clutch Rope Pulley Assembly	8
Cable Pulley Assembly	8
PTO Shaft	9
Decal Layout	10
Common Bolt Torque Values	13

Main Parts

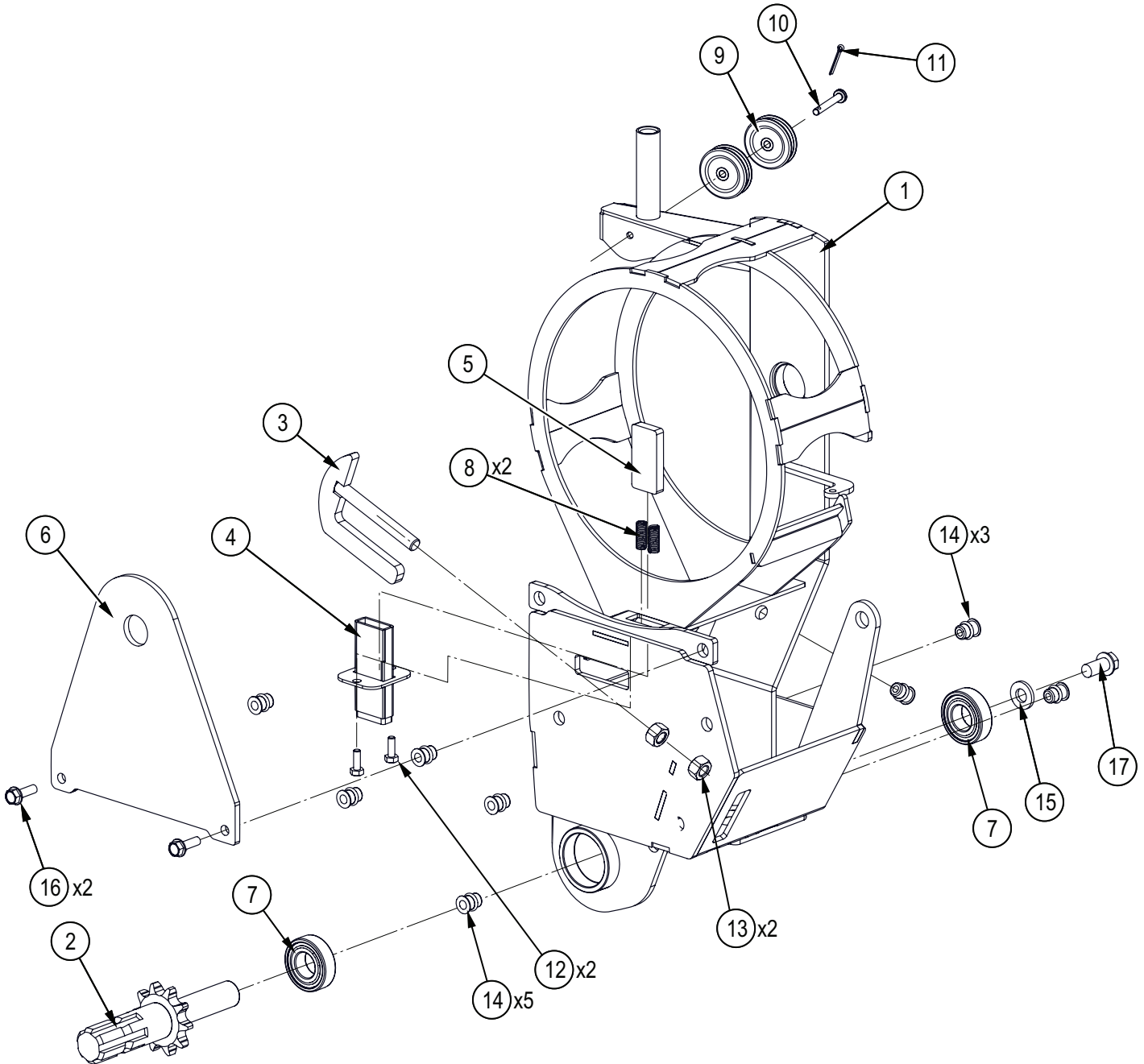


Item No.	Part No.	Description	Qty
1	5017A002	Mid-mounted Cable Pulley	1
2	5017W005	Main A-Frame	1
3	5012A207	Clutch Rope Pulley	1
4	5017W007	Lock Dog Handle	1
5	5017W013	Locking Dog	1
6	Z44203	PTO Shaft, Series B2 x 39.685"	1
7	5017L013	Bottom Pulley Retainer	1
8	5017L027	Front Cover	1
9	5017L038	Lower Chain Guard	1
10	5017L045	Foot Channel	1
11	Z11122	Toplink Pin, 3/4" x 3-7/8"	1
12	Z11251	Hitch Pin, 7/8" x 4-1/4"	2
13	Z12110	Lynch Pin, 3/16"	2
14	Z12140	Lynch Pin, 7/16"	1
15	Z12311	Cotter Pin, 1/8" x 1"	1

Item No.	Part No.	Description	Qty
16	Z12432	Snap Lock Pin, 3/8" x 2-1/2"	1
17	Z71222G8	Hex Bolt, 5/16NC x 2-1/4"	1
18	Z72211	Hex Lock Nut, 1/4NC	2
19	Z72221	Hex Lock Nut, 5/16NC	1
20	Z72251	Hex Lock Nut, 1/2NC	2
21	Z72956	Rivet Nut, 5/16NC x 150	4
22	Z76125	Flange Bolt, 5/16NC x 1"	10
23	Z76152	Flange Bolt, 1/2" x 1-1/4"	2
24	Z78301	Machine Screw, 1/4NC x 3/4"	2
25	Z92205	White Nylon Rope, 1/4" x 18ft	1
26	Z96505	Manual Tube, 2" Short	1
27	Z92119	Winch Cable, 3/8" x 165 ft with Forged End	1
28	Z92301	Keyhole Slider, 3/8" Chain	2
29	Z74121	Set Screw, 5/16NC 3/8"	1

ECN0425

Drum Frame Assembly

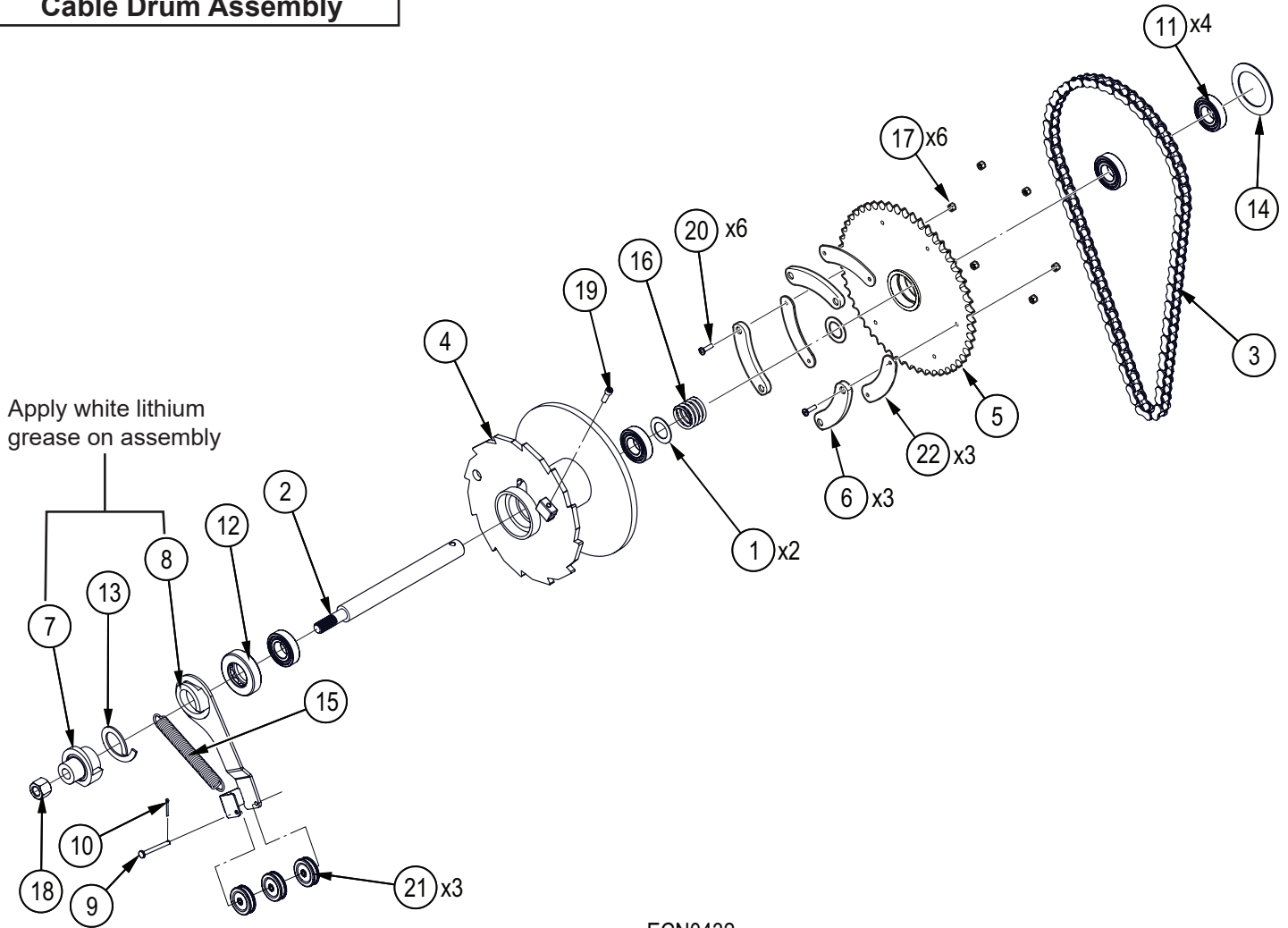


ECN0425

Item No.	Part No.	Description	Qty
1	5017W004	Drum Housing	1
2	5017W003	PTO Input Shaft	1
3	5017W008	Drive Chain Tensioner	1
4	5017W014	Holder, Brake Pad	1
5	5012M204	Block, Drum Brake	1
6	5017L023	Drum Retaining Plate	1
7	Z21209	Ball Bearing, 6205-2RS	2
8	Z32201	Comp Spring, 10mm OD x 64mm x 0.0475"	2
9	Z92203	Groove Pulley, 2" x 1/4"	2

Item No.	Part No.	Description	Qty
10	Z11312	Clevis Pin, 1/4" x 1-5/8"	1
11	Z12311	Cotter Pin, 1/8" x 1"	1
12	Z71107	Hex Bolt, 1/4NC x 3/4"	2
13	Z72151	Hex Nut, 1/2NC	2
14	Z72957	Rivet Nut, 5/16NC x 312	8
15	Z73151	SAE Washer, 1/2"	1
16	Z76125	Flange Bolt, 5/16NC x 1"	2
17	Z76153	Flange Bolt, 1/2NC x 1"	1

Cable Drum Assembly



Apply white lithium grease on assembly

ECN0432

Item No.	Part No.	Description	Qty
1	5017L057	Spacing Washer	2
2	5017M010	Drum Shaft	1
3	5017S002	Roller Chain, #60 x 40 Links	1
4	5017W001	Winch Drum	1
5	5017W002	Clutch Sprocket	1
6	5017S003	Brake Pad – 5-1/4"	3
7	5017W009	Fixed Clutch Ramp	1
8	5017W010	Clutch Ramp Handle	1
9	Z11314	Clevis Pin, 1/4" x 2-3/16"	1
10	Z12311	Cotter Pin, 1/8" x 1"	1
11	Z21210	Ball Bearing, 6206-2RS	4
12	Z22101	Thrust Bearing, 1-3/4" ID x 3.09" OD x 13/16"	1
13	Z22201	Needle Thrust, 50 ID x 70 OD x 3mm	1
14	Z22404	Fiberglide Thrust, 2.5"ID x 3.75" OD x 0.094"	1
15	Z31405	Ext Spring, 7/8" OD x 7" x 0.125"	1
16	Z32404	Comp Spring, 1.687" OD x 1.5" x 0.187"	1
17	Z72211	Hex Lock Nut, 1/4NC	6
18	Z72271	Hex Lock Nut, 3/4NC	1
19	Z75125	SHCS, 5/16NC x 1"	1
20	Z75214	FHCS, 1/4NC x 1-1/4"	6
21	Z92203	Groove Pulley, 2" x 1/4"	3
22	5017L016	Steel Backer, Brake Pad	3

Cable Drum Assembly

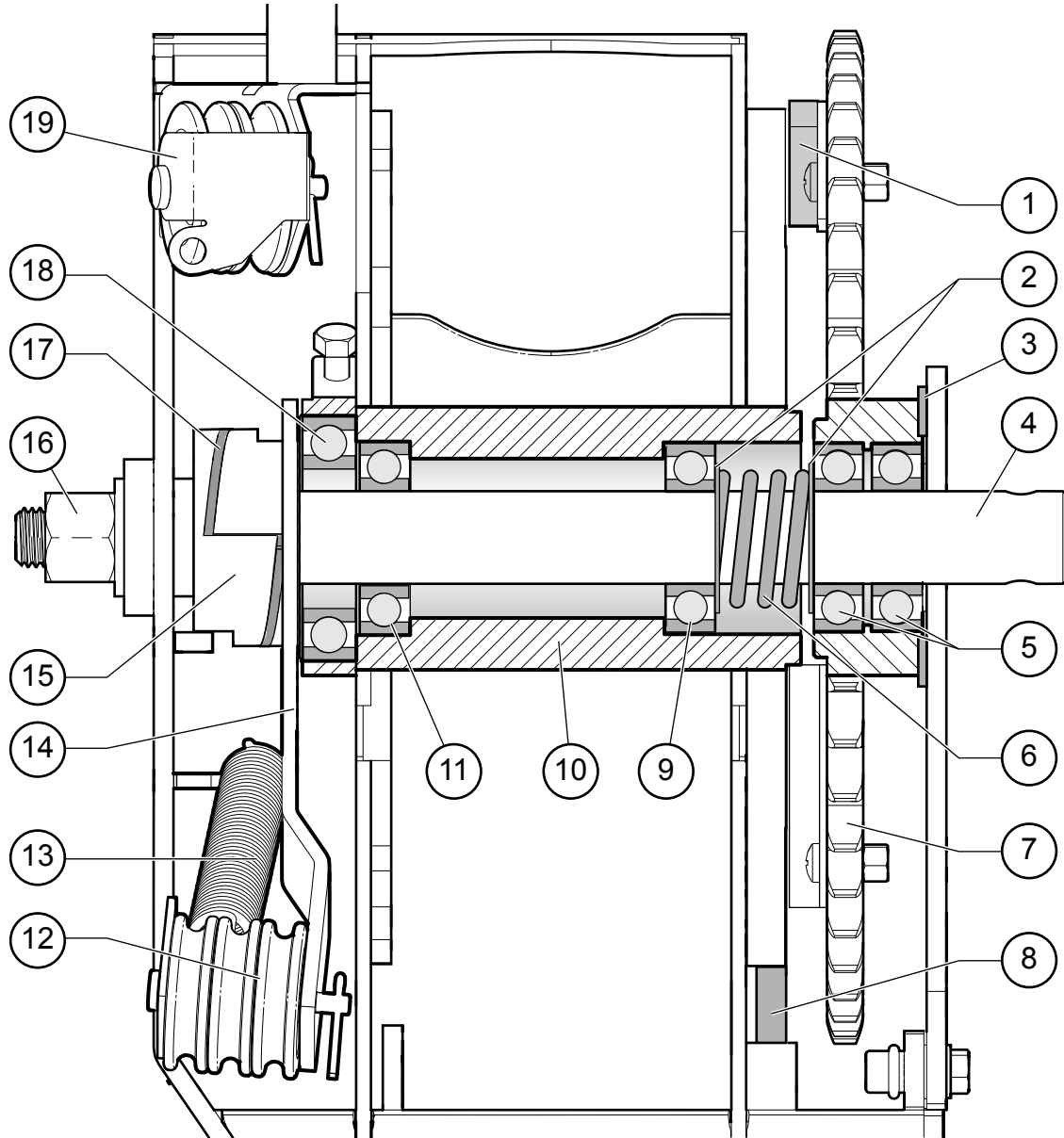
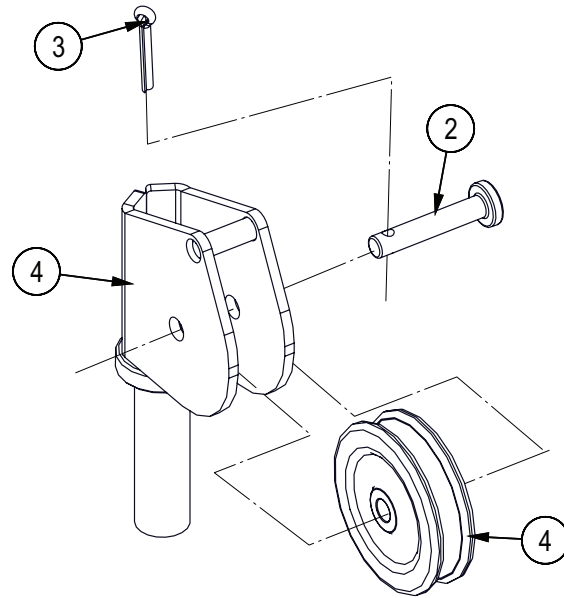


Fig. 1—Cable Drum Assembly

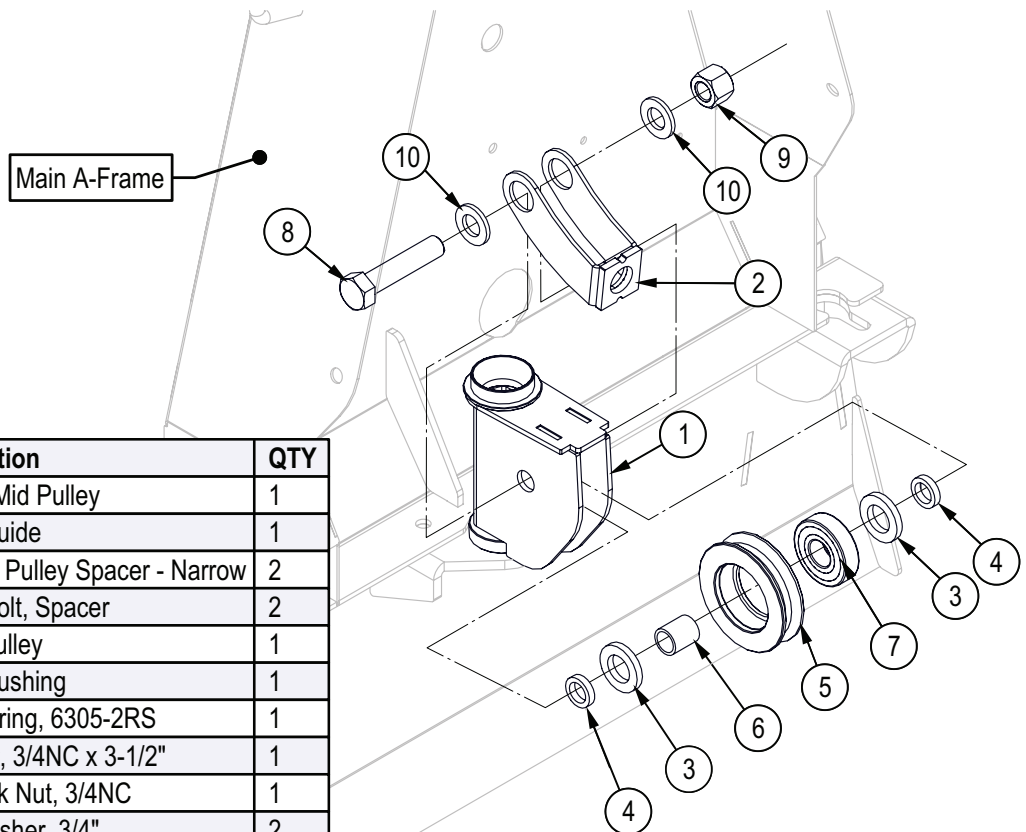
- | | | |
|------------------------------|------------------------|---------------------------|
| 1. Brake Pads (3) | 8. Drum Brake Block | 15. Fixed Clutch Ramp |
| 2. Spacing Washers (3) | 9. Drum Bearing | 16. Drum Shaft Hex Nut |
| 3. Fiberglide Thrust Bearing | 10. Winch Drum | 17. Needle Thrust Bearing |
| 4. Drum Shaft | 11. Drum Bearing | 18. Drum Bearing—Outer |
| 5. Sprocket Bearings | 12. Groove Pulley | 19. Cable Pulley |
| 6. Compression Spring | 13. Extension Spring | |
| 7. Clutch Sprocket | 14. Clutch Ramp Handle | |

Clutch Rope Pulley Assembly



Item No.	Part No.	Description	Qty
1	Z11311	Clevis Pin, 1/4" x 1-1/8"	1
2	Z12311	Cotter Pin, 1/8" x 1"	1
3	Z92203	Groove Pulley 2" x 1/4"	1
4	5012W215	Clutch Rope Pulley Housing	1

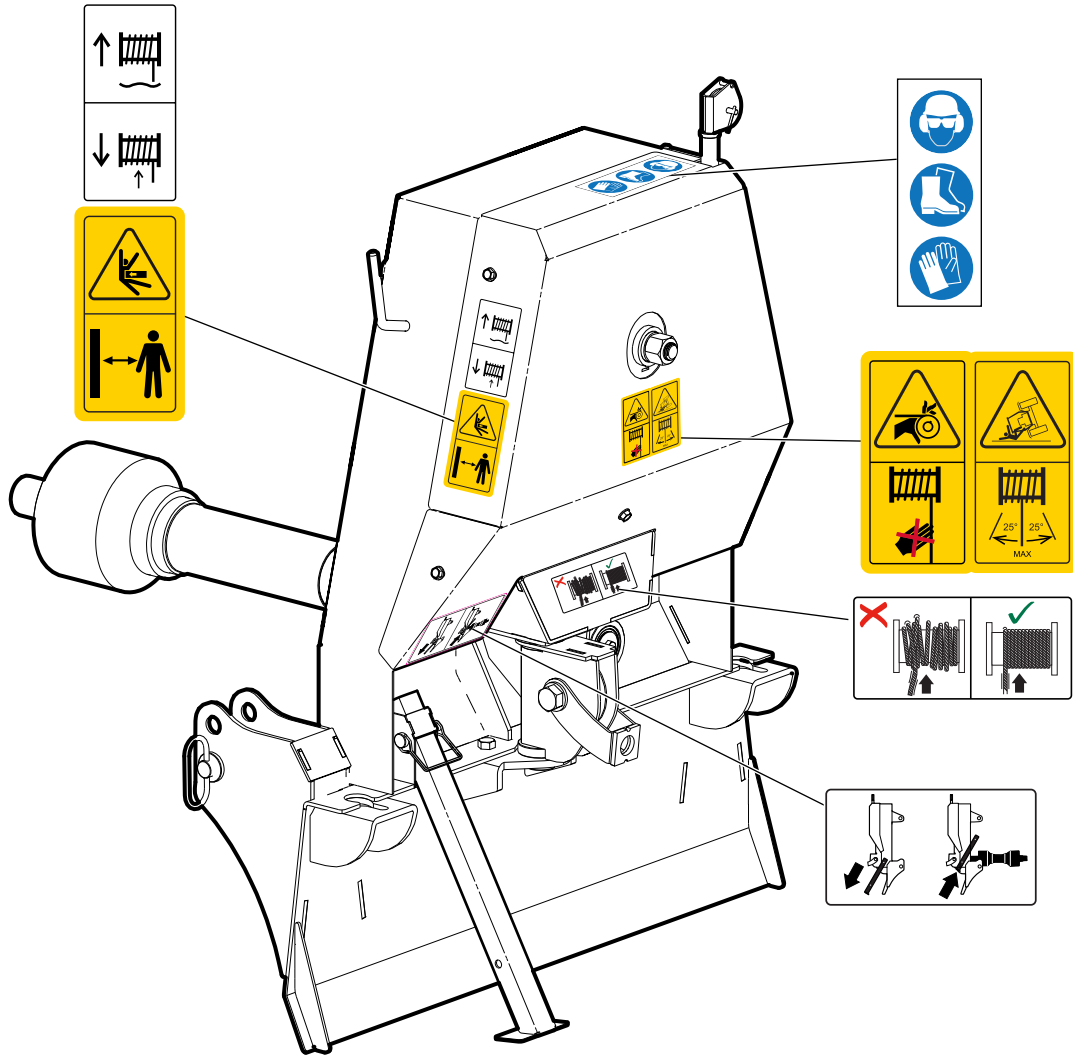
Cable Pulley Assembly



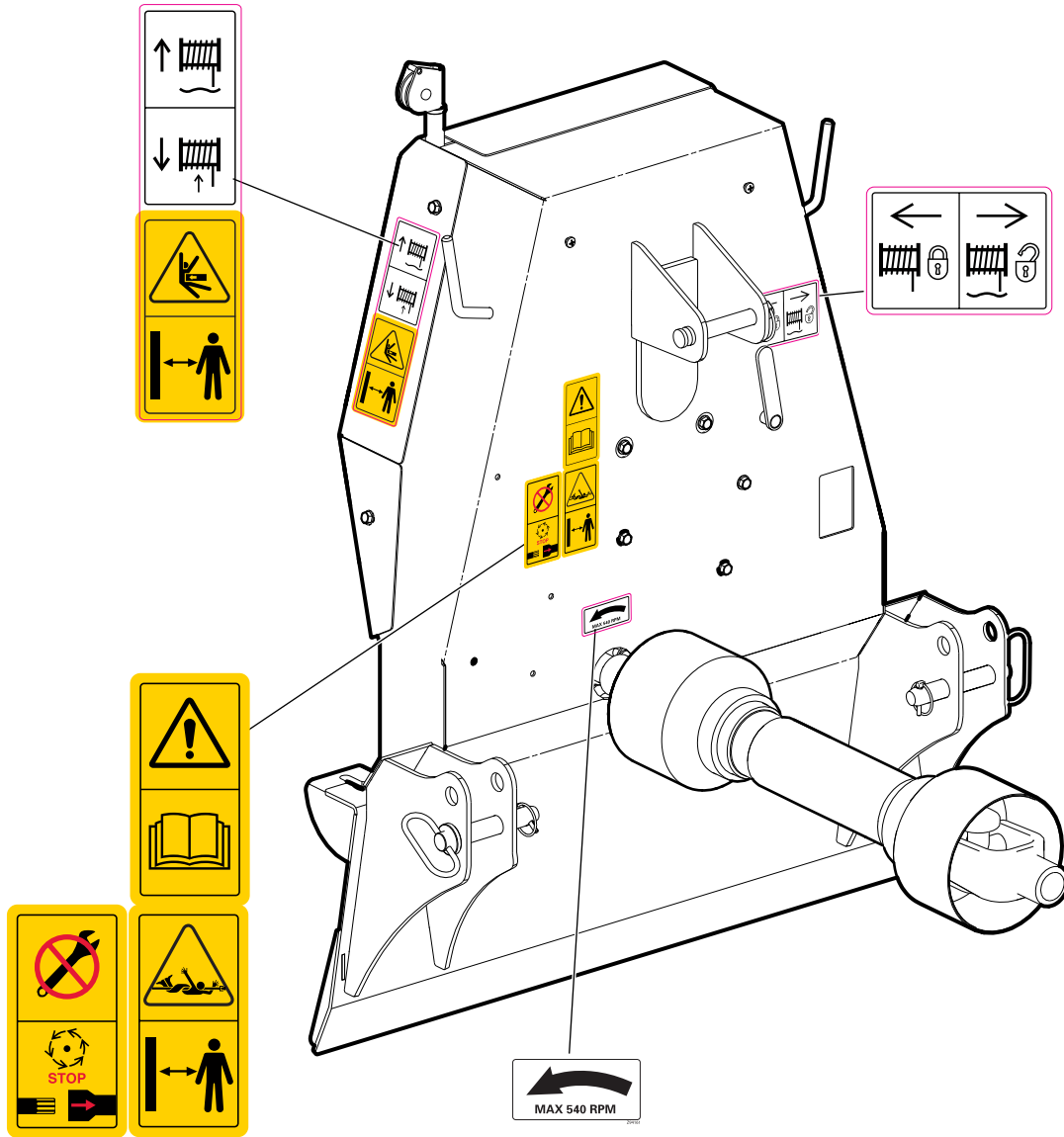
Item No.	Part No.	Description	QTY
1	5017W012	Frame, Mid Pulley	1
2	5017W011	Cable Guide	1
3	5011L647	Washer, Pulley Spacer - Narrow	2
4	5017L050	Pulley Bolt, Spacer	2
5	5017M016	Cable Pulley	1
6	5017M017	Pulley Bushing	1
7	Z21201	Ball Bearing, 6305-2RS	1
8	Z71735	Hex Bolt, 3/4NC x 3-1/2"	1
9	Z72271	Hex Lock Nut, 3/4NC	1
10	Z73171	SAE Washer, 3/4"	2

Decal Layout

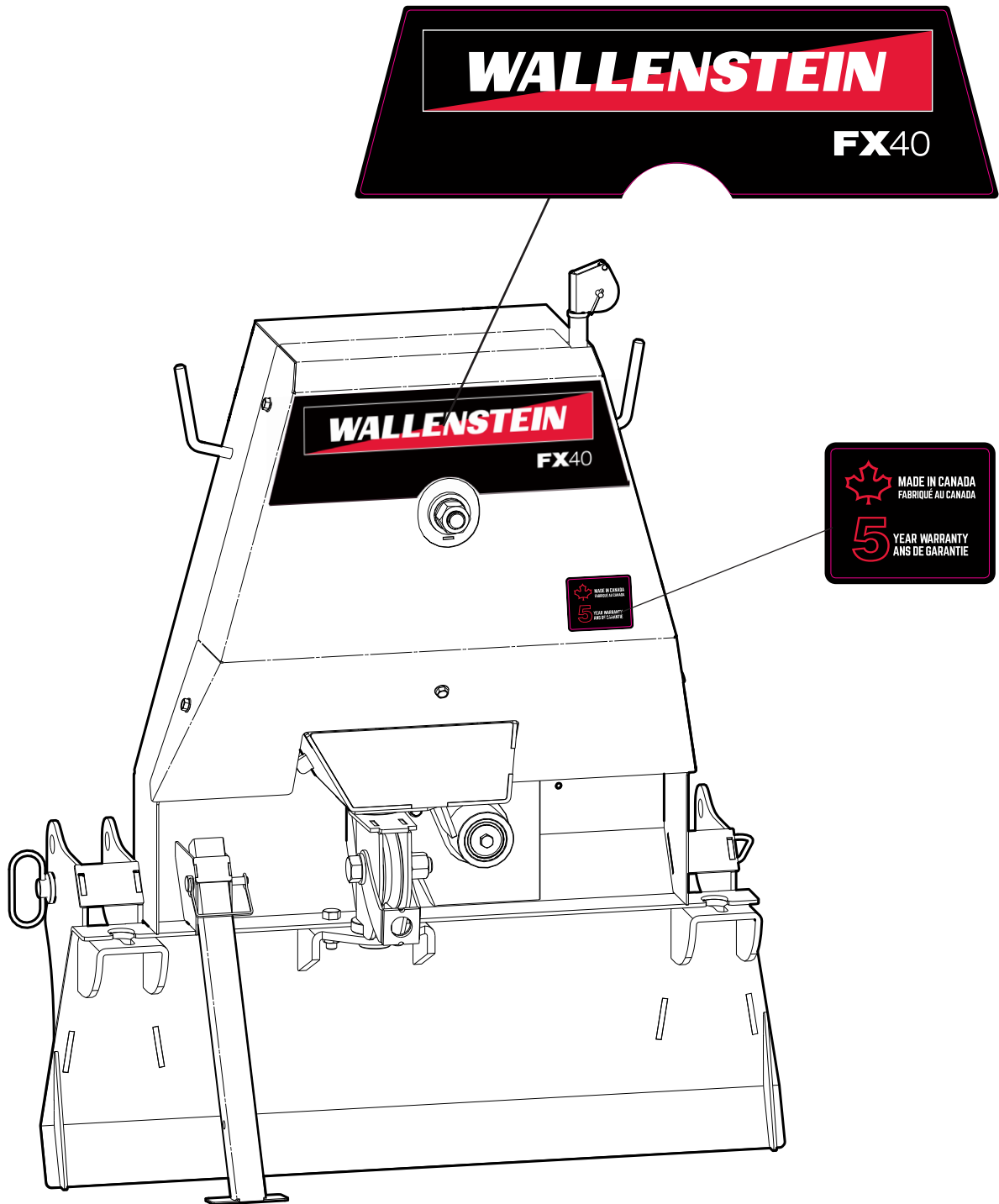
IMPORTANT! If parts are replaced that have safety signs on them, new signs must be applied. Safety signs must always be replaced if they become damaged, are removed, or become illegible.



Decal Layout



Decal Layout




Common Bolt Torque Values

Checking Bolt Torque

The tables shown give correct torque values for various bolts and capscrews. Tighten all bolts to the torque values specified in the table, unless indicated otherwise. Check tightness of bolts periodically.

IMPORTANT! If replacing hardware, use fasteners of the same grade.

IMPORTANT! Torque figures indicated in the table are for non-greased or non-oiled threads. Do not grease or oil threads unless indicated otherwise. When using a thread locker, increase torque values by 5%.

 **NOTE:** Bolt grades are identified by their head markings.

Imperial Bolt Torque Specifications

Bolt Diameter	Torque Value					
	SAE Gr. 2		SAE Gr. 5		SAE Gr. 8	
	lbf•ft	N•m	lbf•ft	N•m	lbf•ft	N•m
1/4"	6	8	9	12	12	17
5/16"	10	13	19	25	27	36
3/8"	20	27	33	45	45	63
7/16"	30	41	53	72	75	100
1/2"	45	61	80	110	115	155
9/16"	60	95	115	155	165	220
5/8"	95	128	160	215	220	305
3/4"	165	225	290	390	400	540
7/8"	170	230	420	570	650	880
1"	225	345	630	850	970	1320



SAE Gr. 2



SAE Gr. 5



SAE Gr. 8

Metric Bolt Torque Specifications

Bolt Diameter	Torque Value			
	Gr. 8.8		Gr. 10.9	
	lbf•ft	N•m	lbf•ft	N•m
M3	0.4	0.5	1.3	1.8
M4	2.2	3	3.3	4.5
M6	7	10	11	15
M8	18	25	26	35
M10	37	50	52	70
M12	66	90	92	125
M14	83	112	116	158
M16	166	225	229	310
M20	321	435	450	610
M30	1,103	1 495	1,550	2 100



8.8



10.9