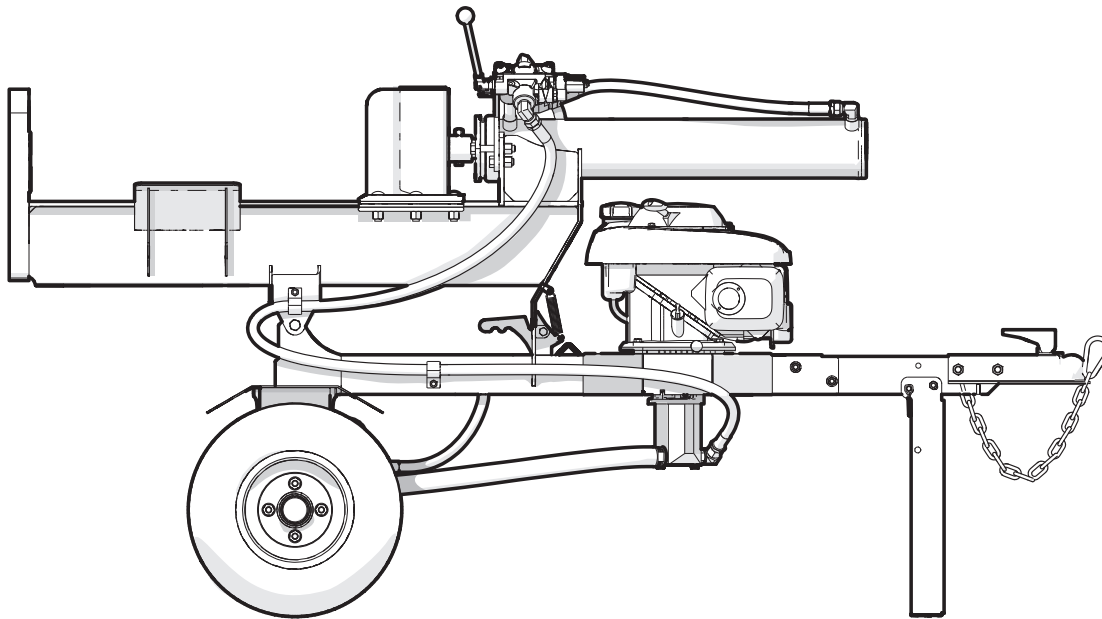


PARTS MANUAL

Serial Number 235001 & up

WE235 TRAILER LOG SPLITTER



Foreword

This Wallenstein parts manual is prepared to assist customers in ordering quality OEM replacement parts.

Regular maintenance combined with replacing old, worn or broken parts with the correct OEM parts is essential in prolonging the life of your Wallenstein product. Refer to this manual to identify replacement parts.

To order parts, contact your Wallenstein dealer or distributor. Have the product model and serial number handy.

If your dealer is no longer available, please go to our website: <http://wallensteinequipment.com> and click on the [Dealer Locator](#) to find the nearest dealer.

All information contained in this parts manual is current as per the revision date at the bottom of the page. Wallenstein reserves the right to change product specifications at any time without notice.

If your product specifications differ from those contained in this manual, contact Wallenstein for current information.

Reproduction of information in this parts manual is prohibited without prior written permission from Wallenstein Equipment Inc.

Wallenstein Equipment Inc. • © 2019

WARNING!

Refer to the operators manual for safe operation and maintenance.

Maintenance should be performed by trained personnel only.

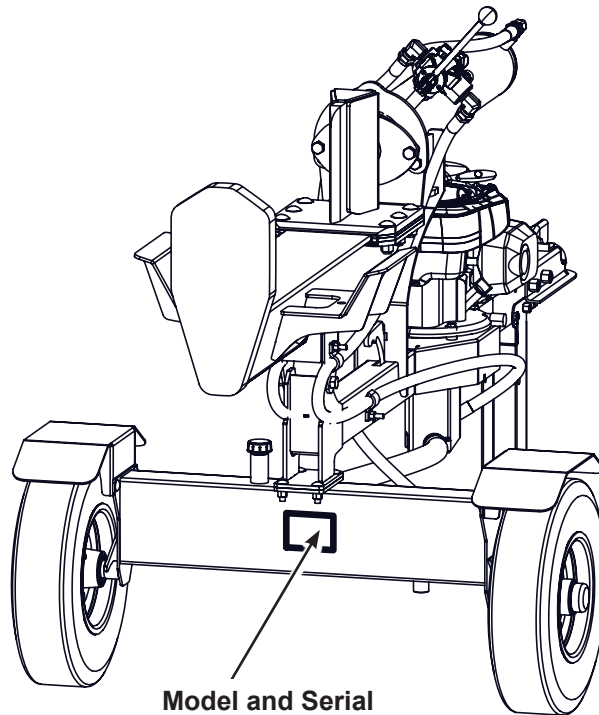
Serial Number Location

Always provide the model and serial number of your Wallenstein product when ordering parts or requesting service or other information. This information is found on the product information plate as shown below.

Record your product information here for future reference.

Model _____

Serial Number _____



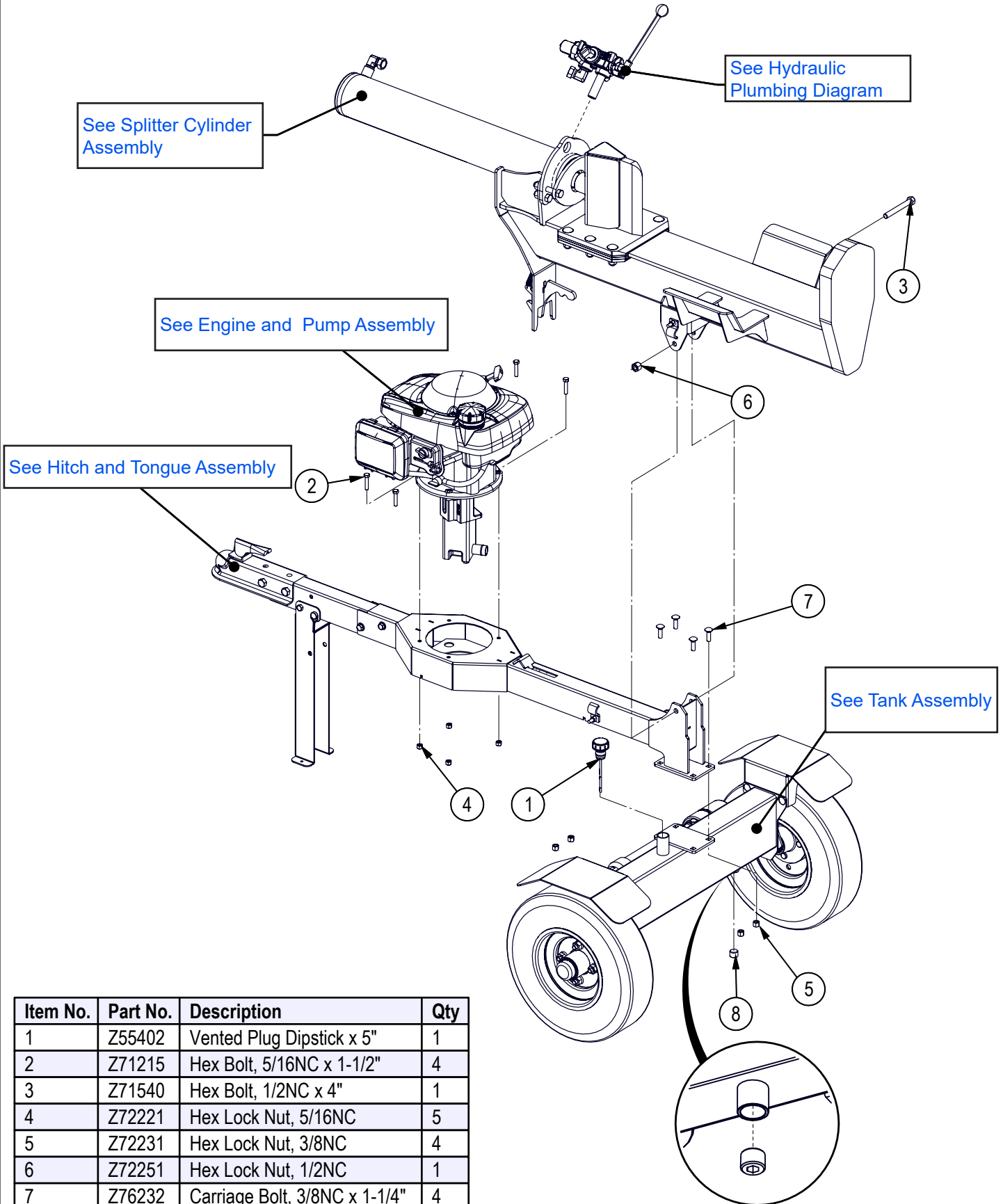
Model and Serial
Number Location

www.wallensteinequipment.com

Contents

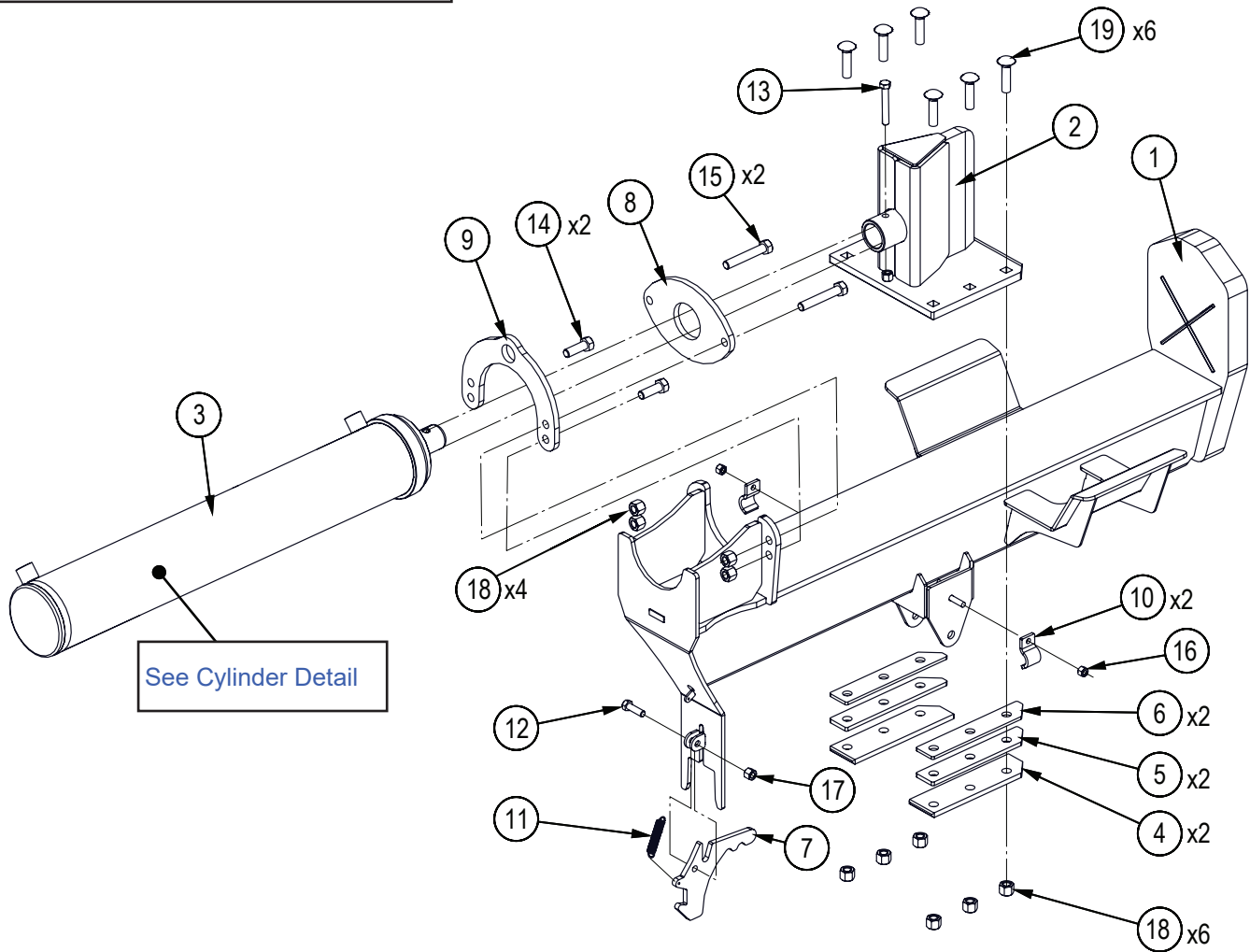
Main Parts	4
Splitter Cylinder Assembly	5
Hitch and Tongue Assembly	6
Tank Assembly	7
Hub Assembly	8
Cylinder Detail	8
Hydraulic Circuit – S/N 235001 to 235349	9-1
Hydraulic Circuit – S/N 235350 & Up	9-2
Engine and Pump Assembly – S/N 235001 to 235349	10-1
Engine and Pump Assembly – S/N 235350 & Up	10-2
Decal Layout	11
Control Valve Service Kit	12
Accessories	13
Common Bolt Torque Values	14
Hydraulic Fitting Torque Values	15
Wheel Lug Torque Values	15

Main Parts



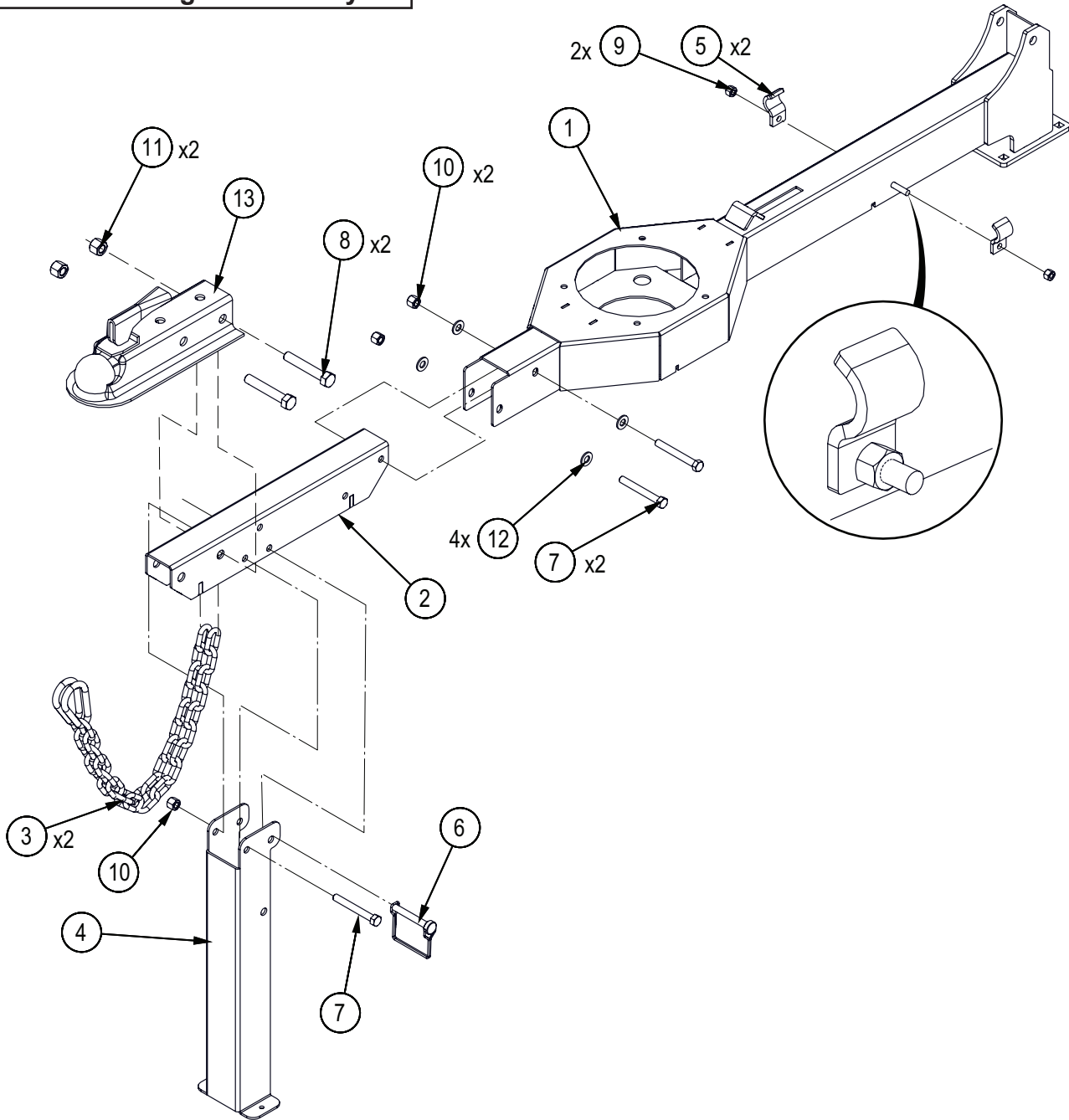
Item No.	Part No.	Description	Qty
1	Z55402	Vented Plug Dipstick x 5"	1
2	Z71215	Hex Bolt, 5/16NC x 1-1/2"	4
3	Z71540	Hex Bolt, 1/2NC x 4"	1
4	Z72221	Hex Lock Nut, 5/16NC	5
5	Z72231	Hex Lock Nut, 3/8NC	4
6	Z72251	Hex Lock Nut, 1/2NC	1
7	Z76232	Carriage Bolt, 3/8NC x 1-1/4"	4
8	Z51192	Socket Plug, MP 08	1

Splitter Cylinder Assembly



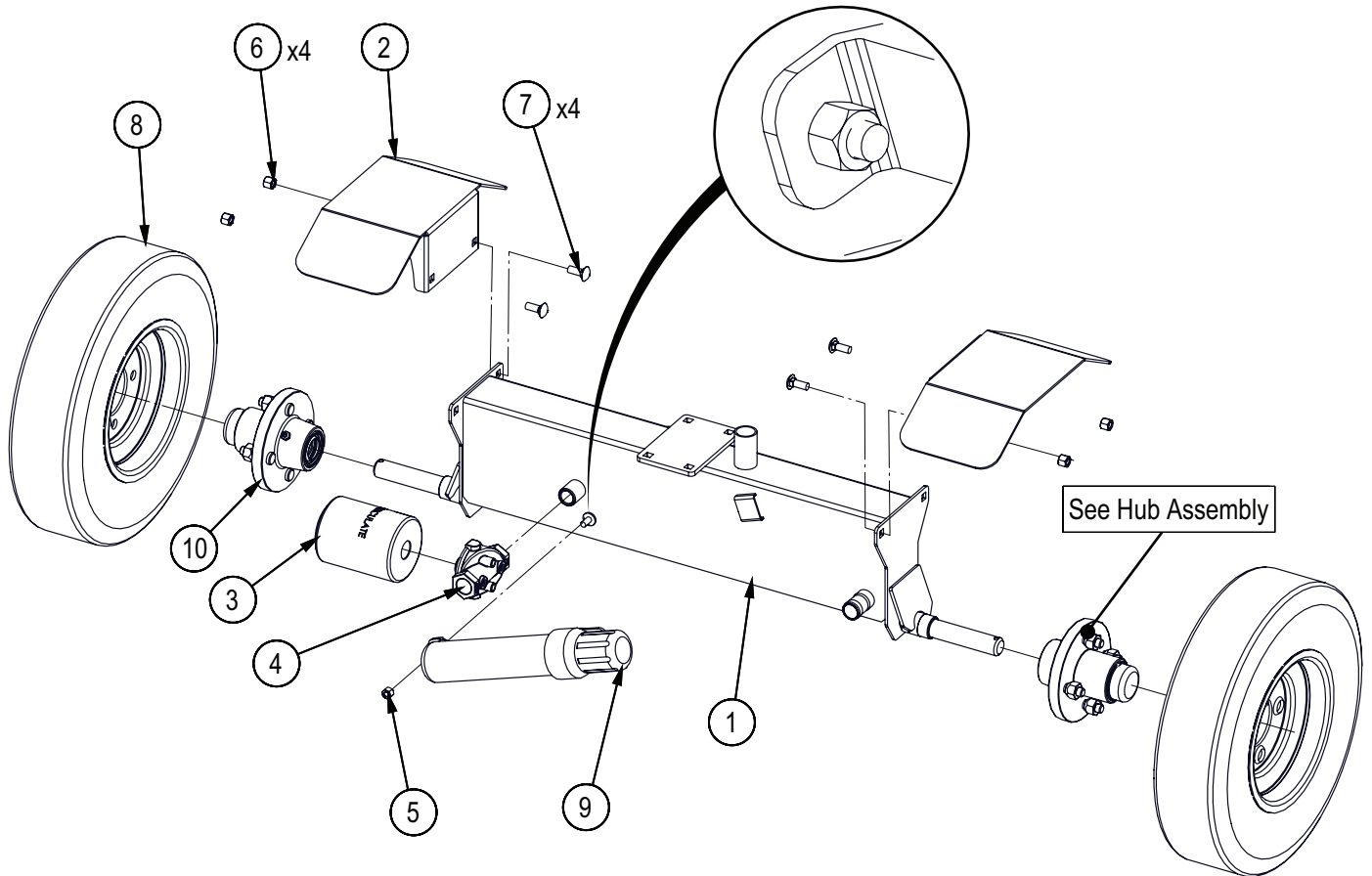
Item No.	Part No.	Description	Qty
1	2093W302	Main Splitter Bed	1
2	2064W503	Splitting Wedge	1
3	2011C101	Cylinder, 4 x 24 x 1-1/2	1
4	2064L509	Gibb	2
5	2064L511	Spacer, Gibb	2
6	2064L512	Thin Spacer, Gibb	2
7	2064L524	Latch	1
8	2064L563	Gland Clamp Plate	1
9	2064L564	Cylinder Saddle	1
10	6011L128	Single Hose Clamp	2
11	Z31304	Ext Spring, 1/2" OD x 2-1/2" x .063"	1
12	Z71312	Hex Bolt, 3/8NC x 1-1/4"	1
13	Z71325	Hex Bolt, 3/8NC x 2-1/2"	1
14	Z71515	Hex Bolt, 1/2NC x 1-1/2"	2
15	Z71530	Hex Bolt, 1/2NC x 3"	2
16	Z72221	Hex Lock Nut, 5/16NC	2
17	Z72231	Hex Lock Nut, 3/8NC	2
18	Z72251	Hex Lock Nut, 1/2NC	10
19	Z76255	Carriage Bolt, 1/2NC x 2"	6

Hitch and Tongue Assembly



Item No.	Part No.	Description	Qty
1	2093W301	Tongue	1
2	2064W517	Hitch Beam	1
3	Z92303	Safety Chain, 1/4" x 2ft with Snap	2
4	2064L575	Leg	1
5	6011L128	Single Hose Clamp	2
6	Z12432	Snap Lock Pin, 3/8" x 2-1/2"	1
7	Z71330	Hex Bolt, 3/8NC x 3"	3
8	Z71530	Hex Bolt, 1/2NC x 3"	2
9	Z72221	Hex Lock Nut, 5/16NC	2
10	Z72231	Hex Lock Nut, 3/8NC	3
11	Z72251	Hex Lock Nut, 1/2NC	2
12	Z73131	SAE Washer, 3/8"	4
13	Z91614	Hitch Coupler, 2" Ball x 2" x 3500lbs	1

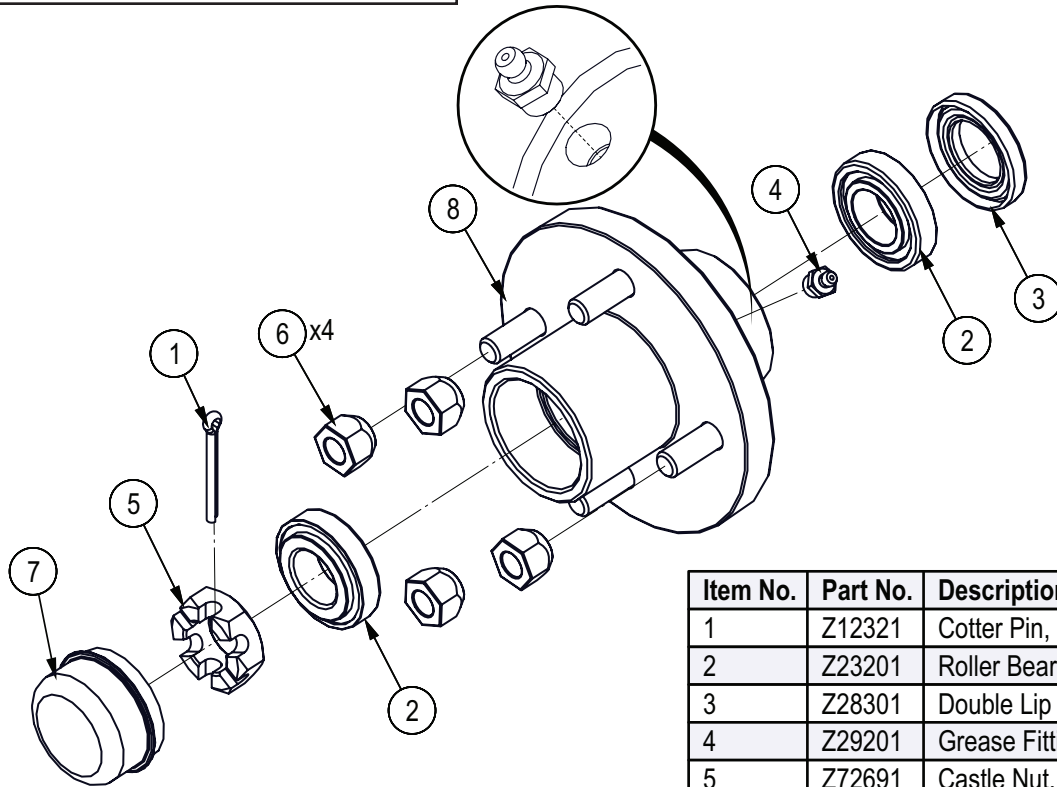
Tank Assembly



Item No.	Part No.	Description	Qty
1	2093W303	Tank	1
2	2064L562	Plain Fender	2
3	Z55301	Particulate Filter, FP12	1
4	Z55302	Filter Cap, MP12 x FP12	1
5	Z72221	Hex Lock Nut, 5/16NC	1
6	Z72231	Hex Lock Nut, 3/8NC	4
7	Z76231	Carriage Bolt, 3/8NC x 1"	4
8	Z91301	4.80-8 LRB SportTrail 4on4"	2
9	Z96503	Manual Tube, 3-1/2" Short	1
10	Z91202	Idler Hub Assy, 1000lbs x 4on4" x 1"	2

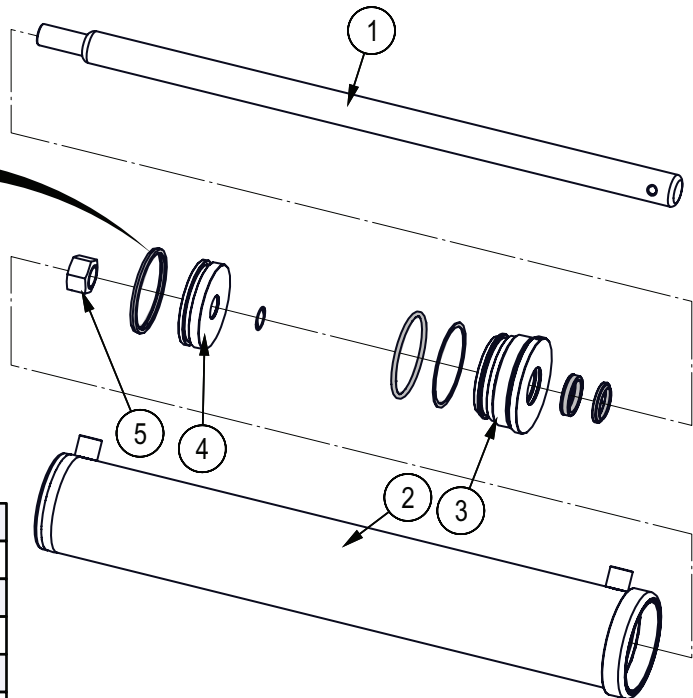
ECN0399

Hub Assembly



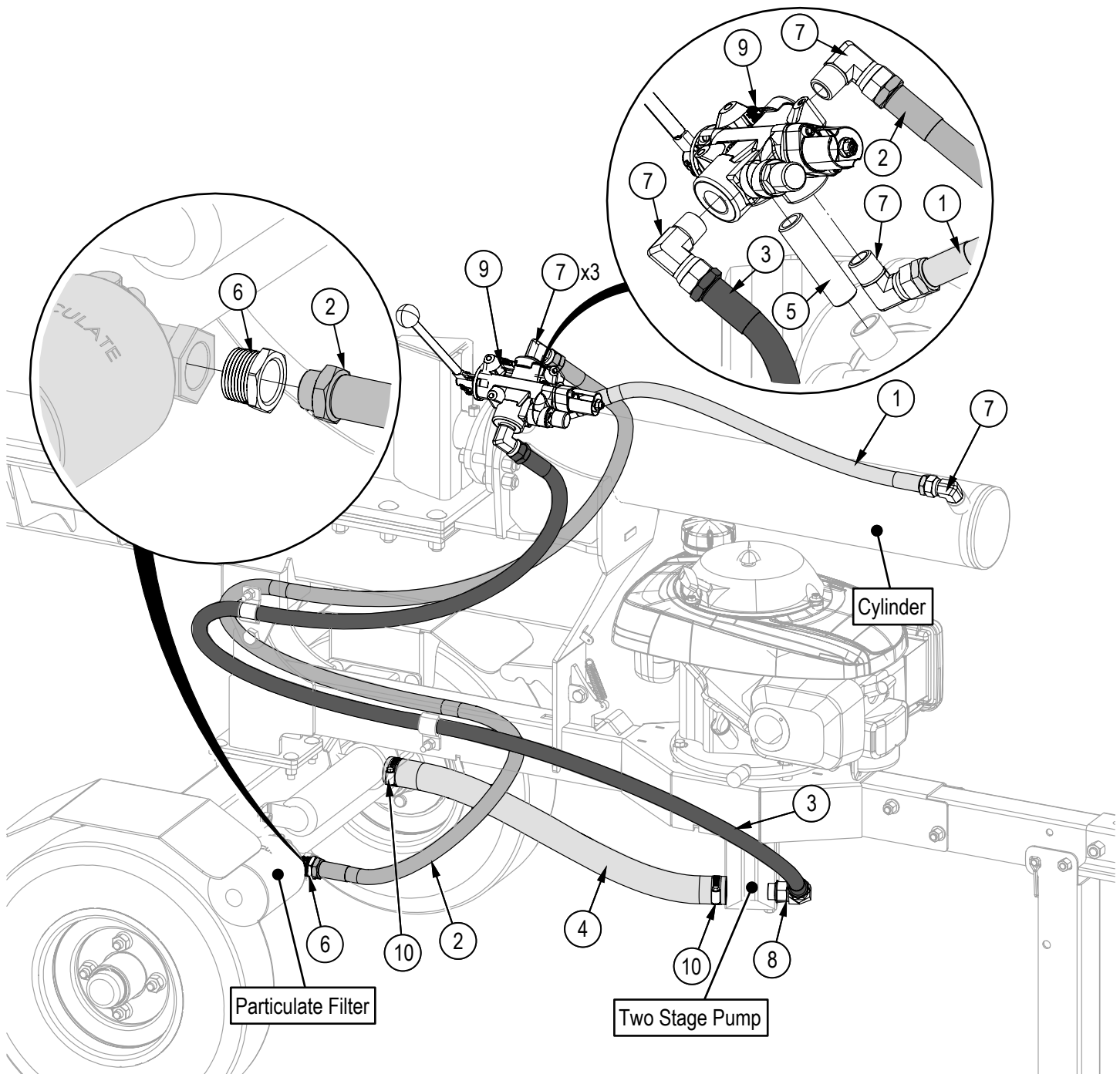
Item No.	Part No.	Description	Qty
1	Z12321	Cotter Pin, 3/16" x 1-3/4"	1
2	Z23201	Roller Bearing, L44643 L44610	2
3	Z28301	Double Lip Seal, 1-1/4"	1
4	Z29201	Grease Fitting, MP02	1
5	Z72691	Castle Nut, 1NF x 9/16" Thick	1
6	Z72931	Lug Nut, 1/2NF	4
7	Z91801	Dust Cap, 1.98 Bore	1
8	Z91201	Hub, 1000lbs x 4on4	1

Cylinder Detail



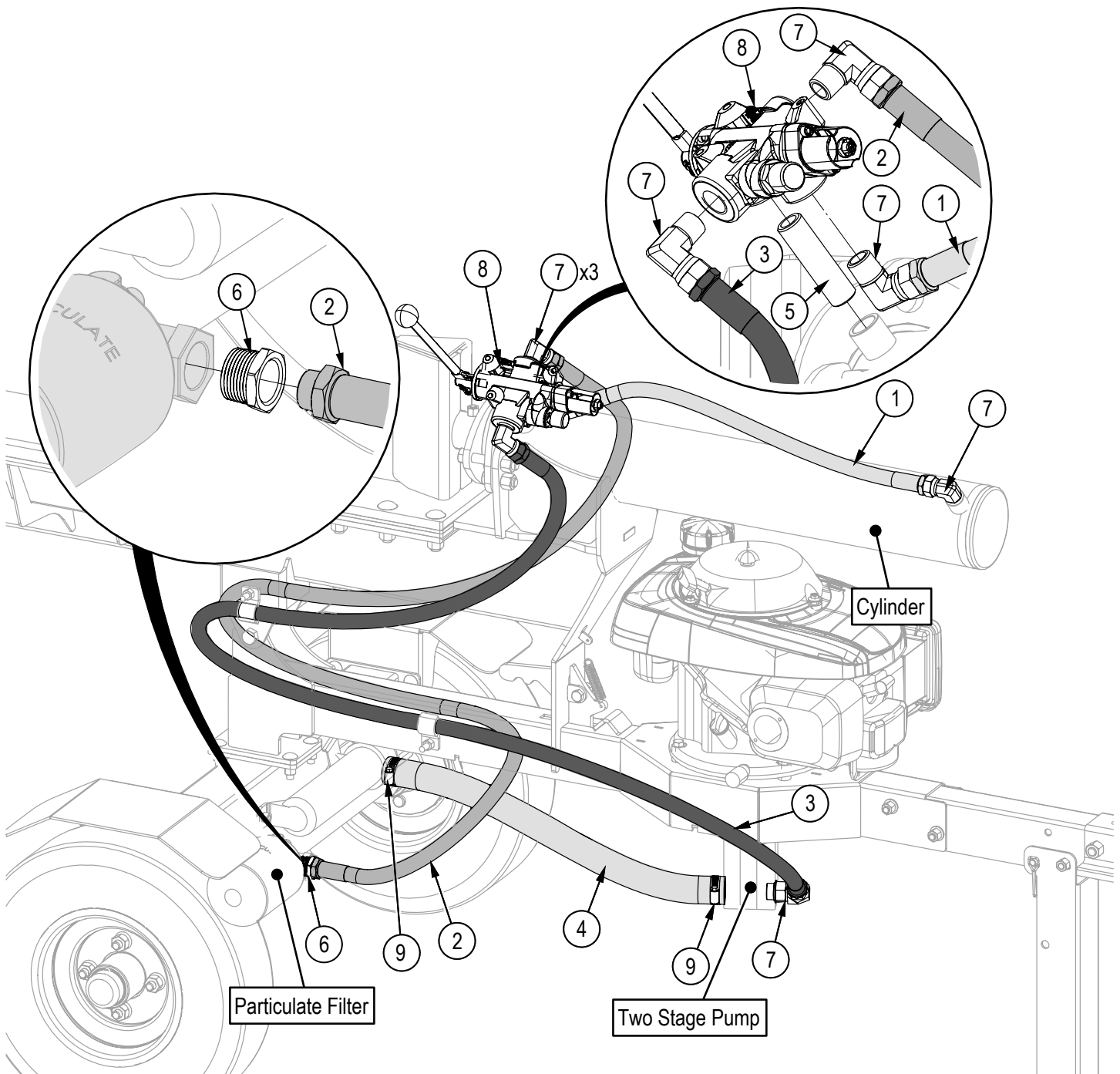
Item No.	Part No.	Description	Qty
1	2011C1012	Rod, 1-1/2 x 1	1
2	2011C1014	Barrel, 4"	1
3	G400-150S	Gland, 4" x 1-1/2"	1
4	P100-400SP	Piston, 4" Bore	1
5	Z72292G8	Hex Lock Nut 1NF Grade 8	1

Hydraulic Circuit – S/N 235001 to 235349



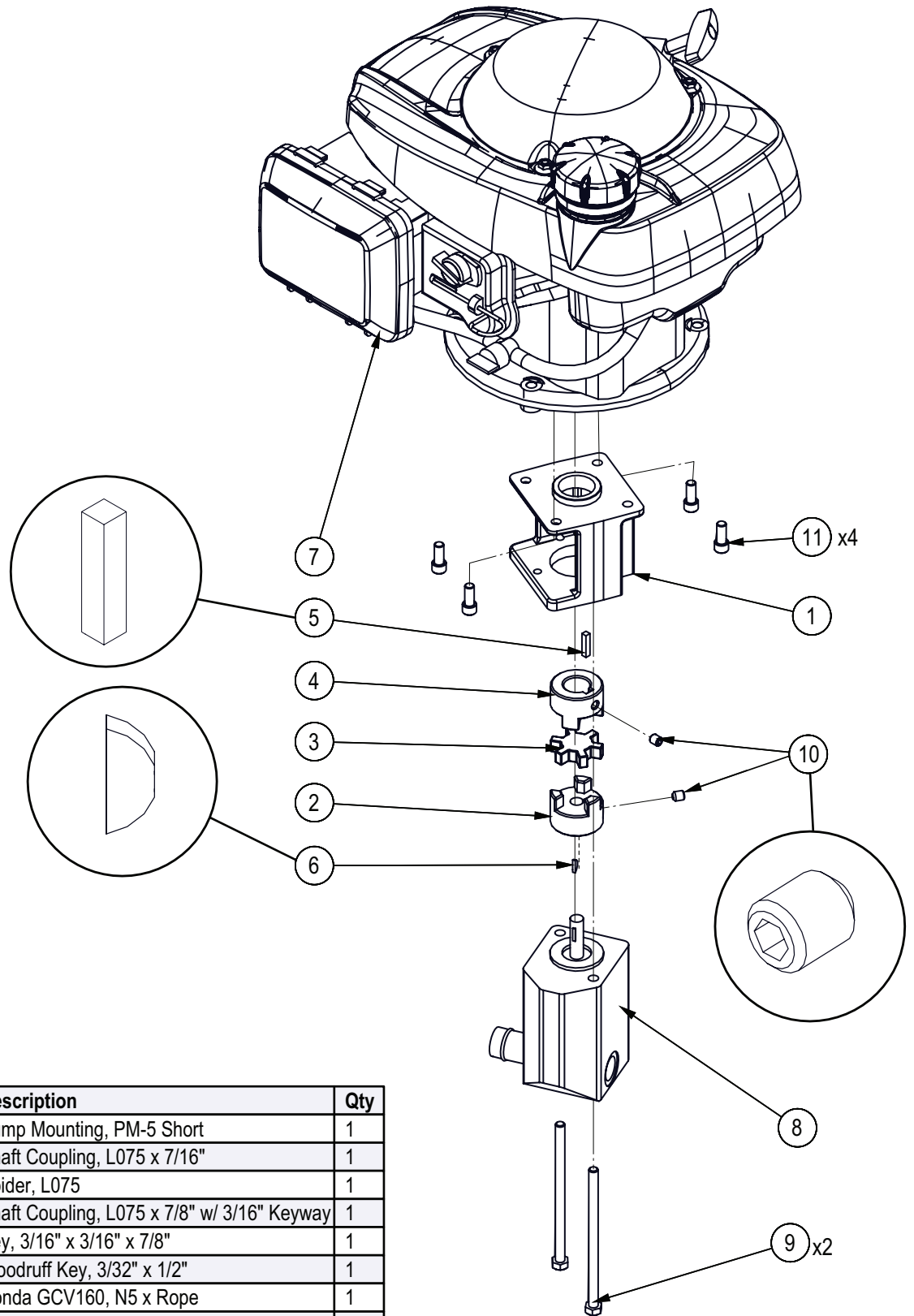
Item No.	Part No.	Description	Qty
1	2064F501	1/2" Hose, MP08 x MP08 x 19"	1
2	2064F502	1/2" Hose, MP08 x MP08 x 67"	1
3	2064F503	1/2" Hose, MP08 x MP08 x 72"	1
4	2064F504	Suction Hose, 1" x 30"	1
5	Z51113	Pipe Nipple, MP08 x 3"	1
6	Z51221	Straight, MP x FP 1208	1
7	Z51331	Elbow 90, MP x FPX 0808	4
8	Z51383	Elbow 90, MORB x FPX 0808	1
9	Z56209	Single Spool Valve, OC Tandem SCDK x 18GPM	1
10	Z79401	Hose Clamp, SAE #16 (1-1/2")	2

Hydraulic Circuit – S/N 235350 & Up



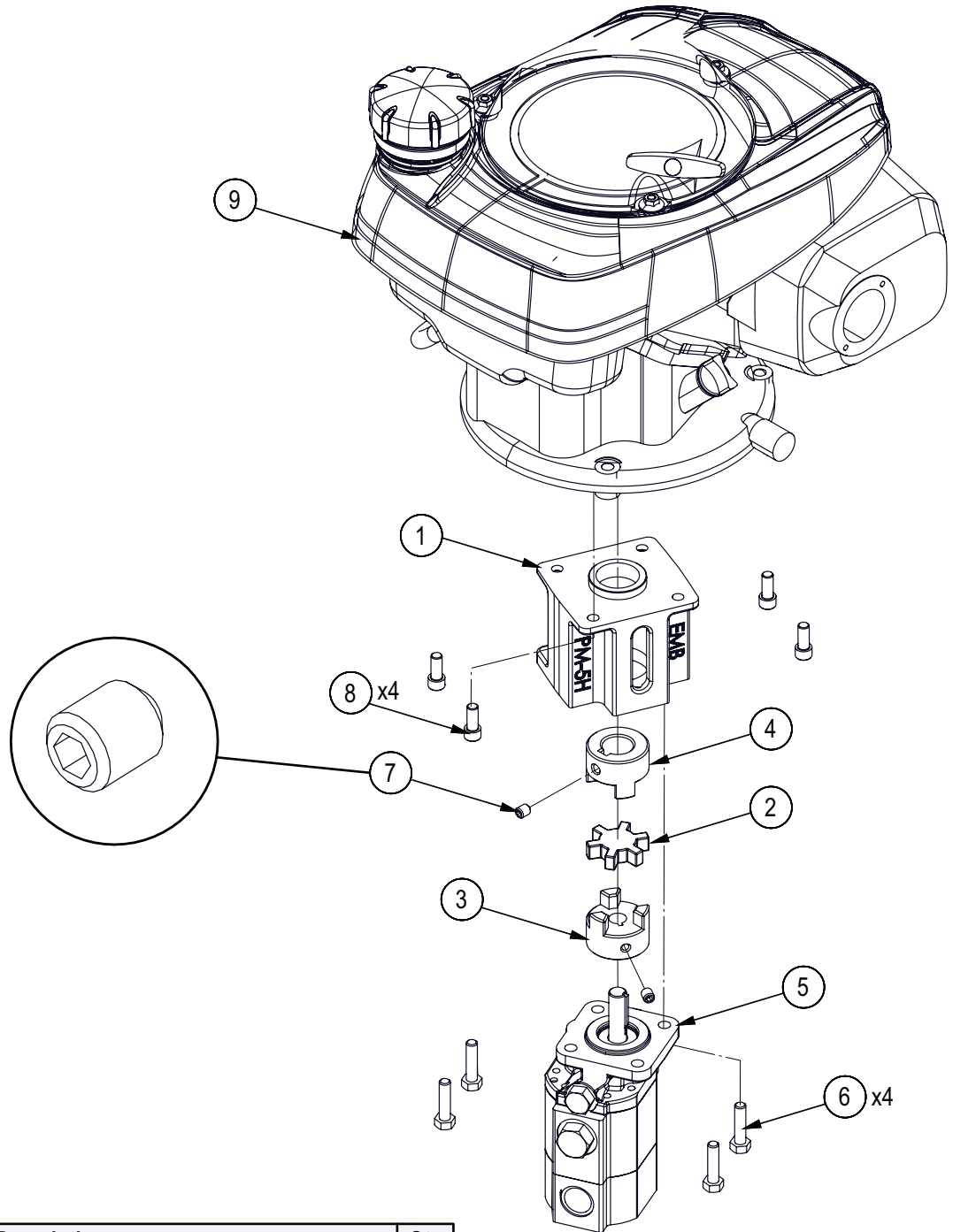
Item No.	Part No.	Description	Qty
1	2064F501	1/2" Hose, MP08 x MP08 x 19"	1
2	2064F502	1/2" Hose, MP08 x MP08 x 67"	1
3	2064F503	1/2" Hose, MP08 x MP08 x 72"	1
4	2064F504	Suction Hose, 1" x 30"	1
5	Z51113	Pipe Nipple, MP08 x 3"	1
6	Z51221	Straight, MP x FP 1208	1
7	Z51331	Elbow 90, MP x FPX 0808	5
8	Z56209	Single Spool Valve, OC Tandem SCDK x 18GPM	1
9	Z79401	Hose Clamp, SAE #16 (1-1/2")	2

Engine and Pump Assembly – S/N 235001 to 235349



Item No.	Part No.	Description	Qty
1	2093M302	Pump Mounting, PM-5 Short	1
2	Z46407	Shaft Coupling, L075 x 7/16"	1
3	Z46408	Spider, L075	1
4	Z46433	Shaft Coupling, L075 x 7/8" w/ 3/16" Keyway	1
5	Z46521	Key, 3/16" x 3/16" x 7/8"	1
6	Z46591	Woodruff Key, 3/32" x 1/2"	1
7	Z47406	Honda GCV160, N5 x Rope	1
8	Z53201	Two-Stage Pump, 11GPM	1
9	Z71255	Hex Bolt, 5/16NC x 5-1/2"	2
10	Z74121	Set Screw, 5/16NC x 3/8"	2
11	Z75121	SHCS, 5/16NF x 3/4"	4

Engine and Pump Assembly – S/N 235350 & Up



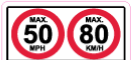
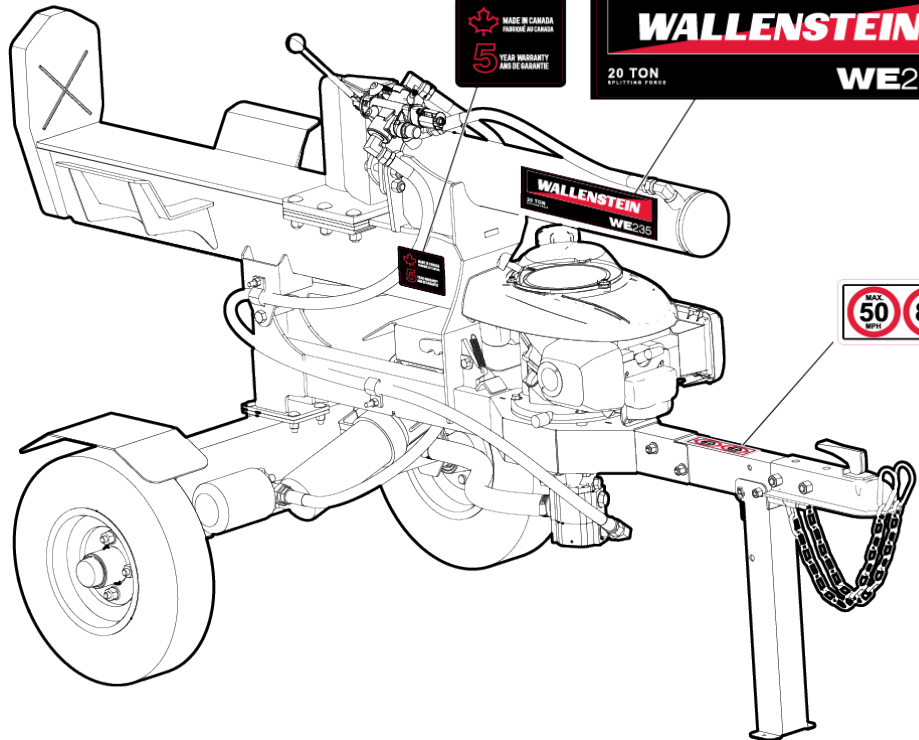
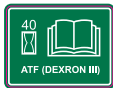
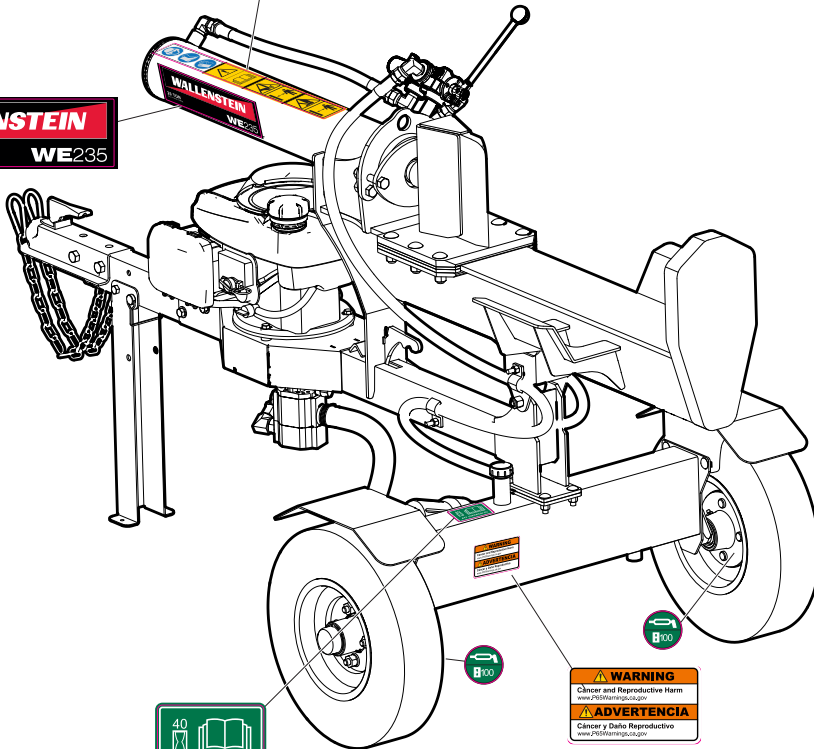
Item No.	Part No.	Description	Qty
1	2093M302	Pump Mounting, PM-5 Short	1
2	Z46408	Spider, L075	1
3	Z46410	Shaft Coupling, L075 x 1/2"	1
4	Z46433	Shaft Coupling, L075 x 7/8" w/ 3/16" Keyway	1
5	Z53208	Two-Stage Pump, 12GPM	1
6	Z71212	Hex Bolt, 5/16NC x 1-1/4"	4
7	Z74121	Set Screw, 5/16NC x 3/8"	2
8	Z75121	SHCS, 5/16NF x 3/4"	4
9	Z47406	Honda GCV160, N5 x Rope	1

ECN0423

Decal Layout

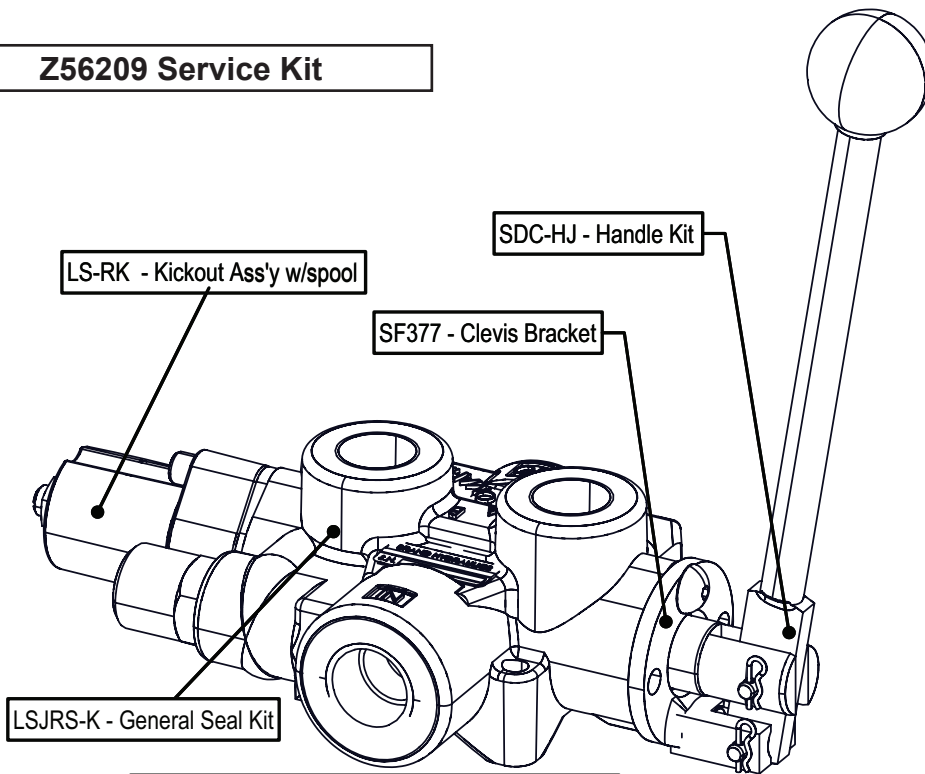
IMPORTANT! If parts are replaced that have safety signs on them, new signs must be applied. Safety signs must always be replaced if they become damaged, are removed, or become illegible.

Safety signs are included in the product decal kit available from your authorized dealer. Decals are not available separately.



Control Valve Service Kit

Z56209 Service Kit

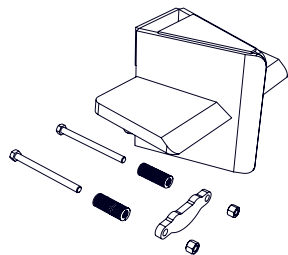


Z56209 Single Spool Valve - PLS50T4JRSHEMB1

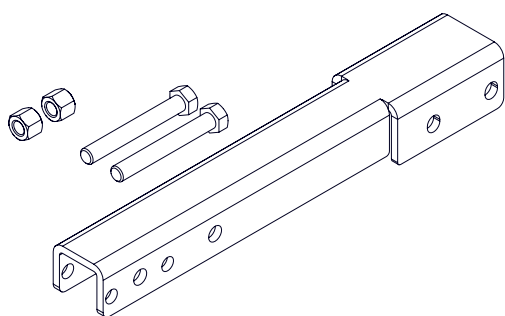
Note: Z56210 Closed Center Valve Required For "C" Models

Accessories

Call your dealer for pricing and availability

**4-way Wedge – P/N W4120**

Boost your productivity and make quick work out of logs by splitting four pieces at once. This is an ideal way to save time.

**12" Hitch Extension – P/N W4202**

Increases your vehicle to machine clearance, helps when backing up.

**All Weather Wood Splitter Cover – P/N W4204**

Heavy duty industrial material, made in Canada. Helps protect your splitter from harsh elements.


Common Bolt Torque Values

Checking Bolt Torque

The tables shown give correct torque values for various bolts and capscrews. Tighten all bolts to the torque values specified in the table, unless indicated otherwise. Check tightness of bolts periodically.

IMPORTANT! If replacing hardware, use fasteners of the same grade.

IMPORTANT! Torque figures indicated in the table are for non-greased or non-oiled threads. Do not grease or oil threads unless indicated otherwise. When using a thread locker, increase torque values by 5%.

 **NOTE:** Bolt grades are identified by their head markings.

Imperial Bolt Torque Specifications

Bolt Diameter	Torque Value					
	SAE Gr. 2		SAE Gr. 5		SAE Gr. 8	
	lbf•ft	N•m	lbf•ft	N•m	lbf•ft	N•m
1/4"	6	8	9	12	12	17
5/16"	10	13	19	25	27	36
3/8"	20	27	33	45	45	63
7/16"	30	41	53	72	75	100
1/2"	45	61	80	110	115	155
9/16"	60	95	115	155	165	220
5/8"	95	128	160	215	220	305
3/4"	165	225	290	390	400	540
7/8"	170	230	420	570	650	880
1"	225	345	630	850	970	1320



SAE Gr. 2



SAE Gr. 5



SAE Gr. 8

Metric Bolt Torque Specifications

Bolt Diameter	Torque Value			
	Gr. 8.8		Gr. 10.9	
	lbf•ft	N•m	lbf•ft	N•m
M3	0.4	0.5	1.3	1.8
M4	2.2	3	3.3	4.5
M6	7	10	11	15
M8	18	25	26	35
M10	37	50	52	70
M12	66	90	92	125
M14	83	112	116	158
M16	166	225	229	310
M20	321	435	450	610
M30	1,103	1 495	1,550	2 100



8.8



10.9

Hydraulic Fitting Torque Values

Tightening Flare Type Tube Fittings

1. Check flare and flare seat for defects that might cause leakage.
2. Align tube with fitting before tightening.
3. Hand-tighten swivel nut until snug.
4. To prevent twisting the tube, use two wrenches. Place one wrench on the connector body and tighten the swivel nut with the second. Torque to values shown.

If a torque wrench is not available, use the FFFT (Flats From Finger Tight) method.

Hydraulic Fitting Torque					
Tube Size OD	Hex Size Across Flats	Torque value		Flats From Finger Tight	
		lbf•ft	N•m	Flats	Turns
3/16	7/16	6	8	2	1/6
1/4	9/16	11–12	15–17	2	1/6
5/16	5/8	14–16	19–22	2	1/6
3/8	11/16	20–22	27–30	1-1/4	1/6
1/2	7/8	44–48	59–65	1	1/6
5/8	1	50–58	68–79	1	1/6
3/4	1-1/4	79–88	107–119	1	1/8
1	1-5/8	117–125	158–170	1	1/8

Values shown are for non-lubricated connections.

Wheel Lug Torque Values

It is extremely important safety procedure to apply and maintain proper wheel mounting torque on your trailer axle. Torque wrenches are the best method to assure the proper amount of torque is being applied to a fastener.

Wheel lugs should be torqued before first road use and after each wheel removal. Check and re torque after the first 10 miles (16 km), 25 miles (40 km), and again at 50 miles (80 km). Check periodically thereafter.

NOTE: *Wheel lugs must be applied and maintained at the proper torque levels to prevent loose wheels, broken studs, and possible dangerous separation of wheels from your axle.*

- Start all lugs by hand to prevent cross threading.
- Tighten lugs in sequence, per wheel lug torque sequence chart.
- The tightening of the fasteners should be done in stages. Following the recommended sequence, tighten fasteners per wheel torque requirements chart.

Wheel Lug Nut Torque				
Wheel Size	Units	1st Stage	2nd Stage	3rd Stage
8"	lbf•ft N•m	12–20 16–26	30–35 39–45.5	45–55 58.5–71.5
12"	lbf•ft N•m	20–25 26–32.5	35–40 45.5–52	50–60 65–78
13"	lbf•ft N•m	20–25 26–32.5	35–40 45.5–52	50–60 65–78
14"	lbf•ft N•m	20–25 26–32.5	50–60 65–78	90–120 117–156
15"	lbf•ft N•m	20–25 26–32.5	50–60 65–78	90–120 117–156
16"	lbf•ft N•m	20–25 26–32.5	50–60 65–78	90–120 117–156

Wheel Lug Torque Pattern

