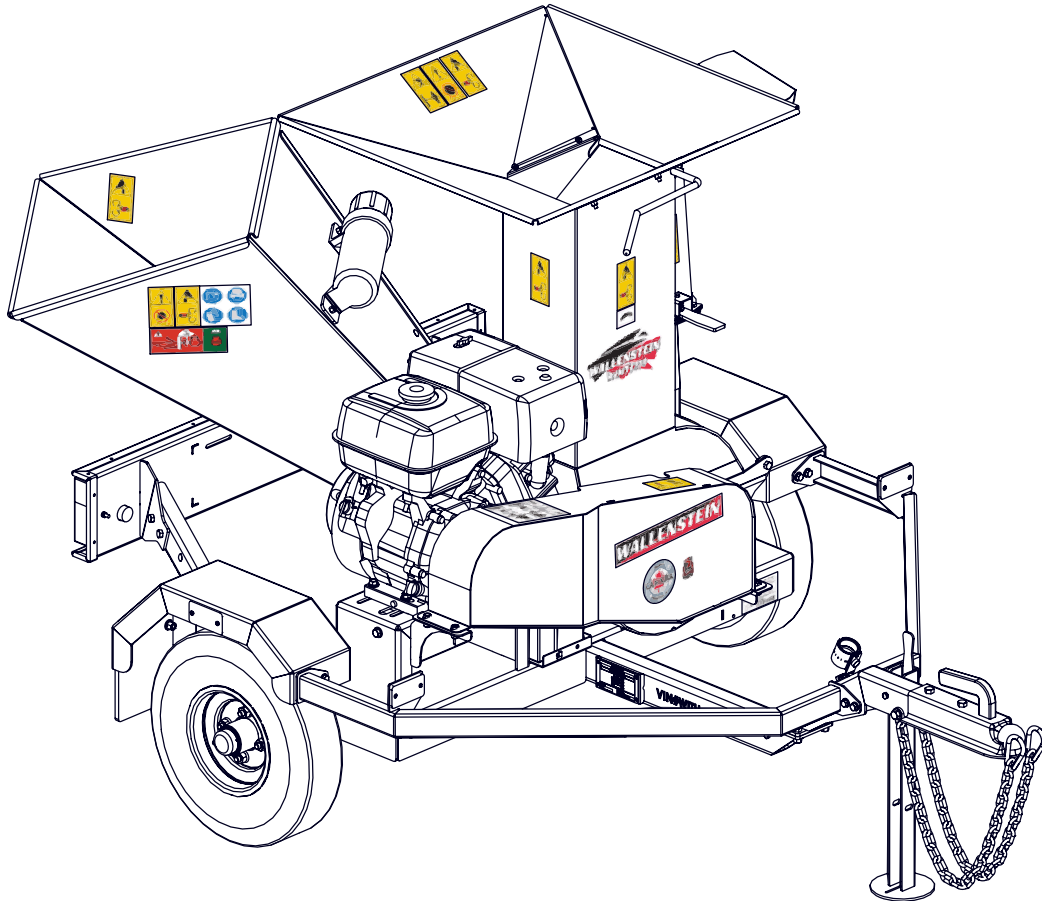




EMB Manufacturing Inc.
4144 Boomer Line · St. Clements, On · N0B 2M0 · Canada
Ph: (519) 699-9283 · Fax: (519) 699-4146
www.wallensteinequipment.com

BXMT3213EU Trailer Splitter / Shredder Parts Manual

Starting with S/N's
2E9US1113ES080022



Refer to the operators
manual for safe
operation and
maintenance



1056T00_PM- BXMT3213EU_C2_Oct-2017
Rev 111017

Foreword

EMB Mfg. has prepared this parts manual to assist customers in ordering quality OEM replacement parts.

Proper and regular service and replacing old, worn or broken parts with the correct OEM parts are essential to prolonging the life of your EMB product. Please refer to this manual before ordering any replacement parts.

All information contained in this parts manual is based on the latest product specification available at the time of printing this manual. If your product differs from the specifications contained within this manual contact EMB Mfg. for information.

EMB reserves the right to alter specifications on their products at any time.

Reproduction of this parts manual of any kind is prohibited without prior written permission from EMB Mfg.

For parts and information please contact your dealer. If your dealer is no longer available please go to our website: www.wallensteinequipment.com and click on "FIND A DEALER NEAR YOU" for information on a local dealer.

Table of Contents

Bolt Torque..... 4

Hydraulic Fitting Torque 5

Wheel Lug Torque 5

Driveline..... 6

Blower Assembly 7

Running Gear 8

Running Gear - Continued 9

Lights and Harness Detail..... 10

Wiring Diagram 11

Rotor Detail Parts Assembly 12

Discharge Chute Assembly 12

Hub Assembly 13

Hopper Flap Detail 13

Label Layout..... 14

Accessories..... 16

Maintenance should be performed by trained personnel only.



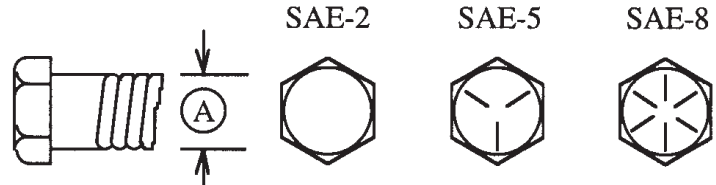
Refer to the operators manual for safe operation and maintenance

Bolt Torque

CHECKING BOLT TORQUE

The tables shown below give correct torque values for various bolts and capscrews. Tighten all bolts to the torques specified in chart unless otherwise noted. Check tightness of bolts periodically, using bolt torque chart as a guide. Replace hardware with the same strength bolt.

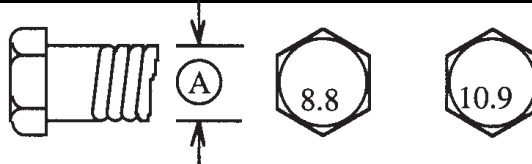
ENGLISH TORQUE SPECIFICATIONS						
Bolt Diameter "A"	Bolt Torque*					
	SAE 2 (N.m) (lb-ft)		SAE 5 (N.m) (lb-ft)		SAE 8 (N.m) (lb-ft)	
1/4"	8	6	12	9	17	12
5/16"	13	10	25	19	36	27
3/8"	27	20	45	33	63	45
7/16"	41	30	72	53	100	75
1/2"	61	45	110	80	155	115
9/16"	95	60	155	115	220	165
5/8"	128	95	215	160	305	220
3/4"	225	165	390	290	540	400
7/8"	230	170	570	420	880	650
1"	345	225	850	630	1320	970



Torque figures indicated above are valid for non-greased or non-oiled threads and heads unless otherwise specified. Therefore, do not grease or oil bolts or capscrews unless otherwise specified in this manual. When using locking elements, increase torque values by 5%.

* Torque value for bolts and capscrews are identified by their head markings.

METRIC TORQUE SPECIFICATIONS				
Bolt Diameter "A"	Bolt Torque*			
	8.8 (N.m) (lb-ft)		10.9 (N.m) (lb-ft)	
M3	0.5	0.4	1.8	1.3
M4	3	2.2	4.5	3.3
M5	6	4	9	7
M6	10	7	15	11
M8	25	18	35	26
M10	50	37	70	52
M12	90	66	125	92
M14	140	103	200	148
M16	225	166	310	229
M20	435	321	610	450
M24	750	553	1050	774
M30	1495	1103	2100	1550
M36	2600	1917	3675	2710



Hydraulic Fitting Torque

Tightening Flare Type Tube Fittings *

1. Check flare and flare seat for defects that might cause leakage.
2. Align tube with fitting before tightening.
3. Lubricate connection and hand tighten swivel nut until snug.
4. To prevent twisting the tube(s), use two wrenches. Place one wrench on the connector body and with the second tighten the swivel nut to the torque shown.

Tube Size OD (in.)	Nut Size Across Flats (in.)	Torque Value*		Recommended Turns To Tighten (After Finger Tightening)	
		(N.m)	(lb-ft)	(Flats)	(Turn)
3/16	7/16	8	6	1	1/6
1/4	9/16	12	9	1	1/6
5/16	5/8	16	12	1	1/6
3/8	11/16	24	18	1	1/6
1/2	7/8	46	34	1	1/6
5/8	1	62	46	1	1/6
3/4	1-1/4	102	75	3/4	1/8
7/8	1-3/8	122	90	3/4	1/8

The torque values shown are based on lubricated connections as in reassembly.

Wheel Lug Torque

It is extremely important safety procedure to apply and maintain proper wheel mounting torque on your trailer axle. Torque wrenches are the best method to assure the proper amount of torque is being applied to a fastener.

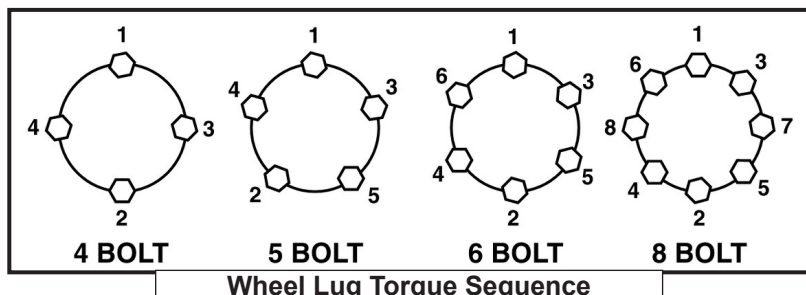
Wheel lugs should be torqued before first road use and after each wheel removal. Check and re torque after the first 16Km (10 miles), 40Km (25 miles), and again at 80Km (50 miles). Check periodically thereafter.

Note: Wheel lugs must be applied and maintained at the proper torque levels to prevent loose wheels, broken studs, and possible dangerous separation of wheels from your axle.

- Start all lugs by hand to prevent cross threading.
- Tighten lugs in sequence, per wheel lug torque sequence chart.
- The tightening of the fasteners should be done in stages. Following the recommended sequence, tighten fasteners per wheel torque requirements chart.

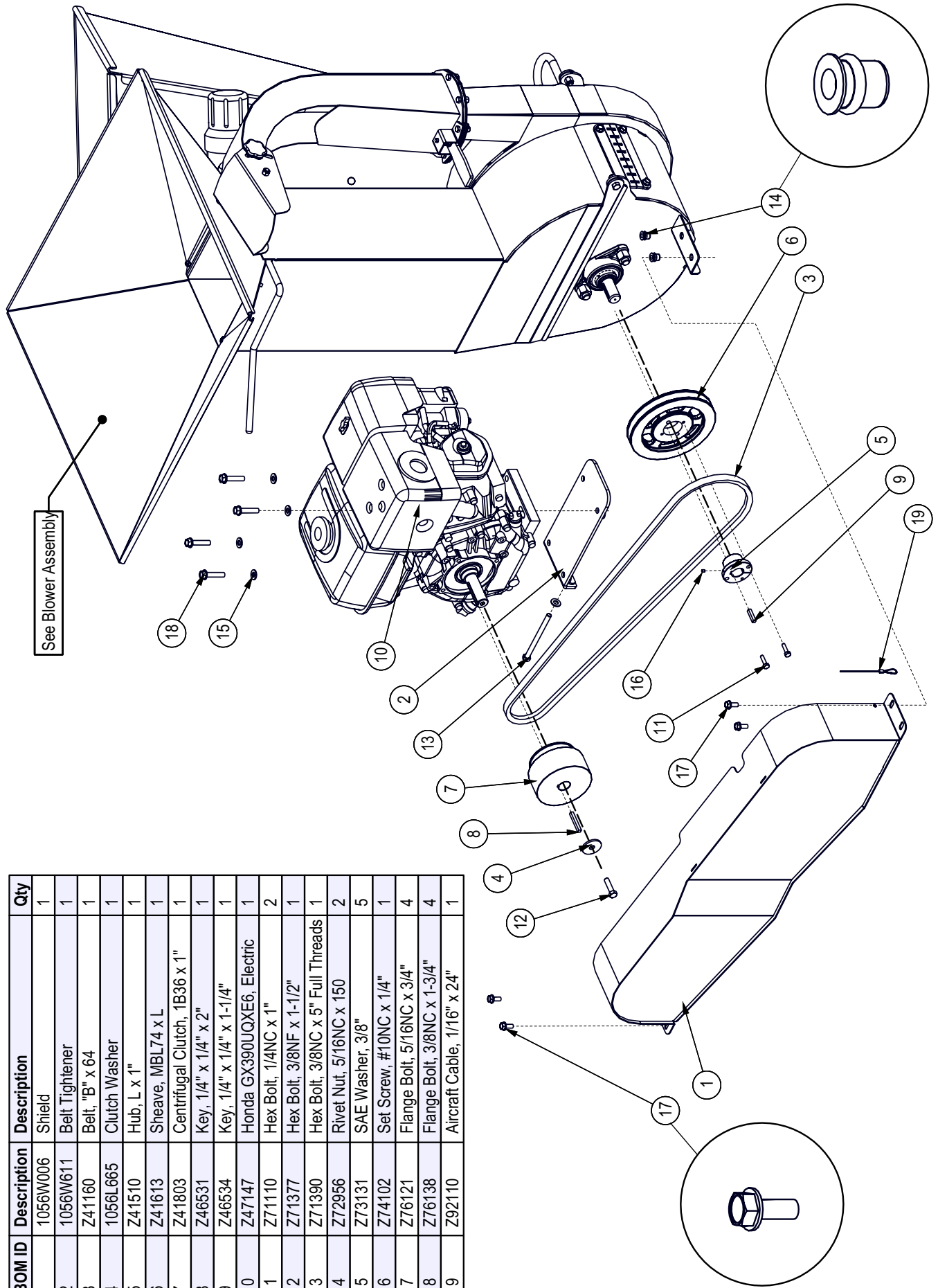
Wheel Torque Requirements

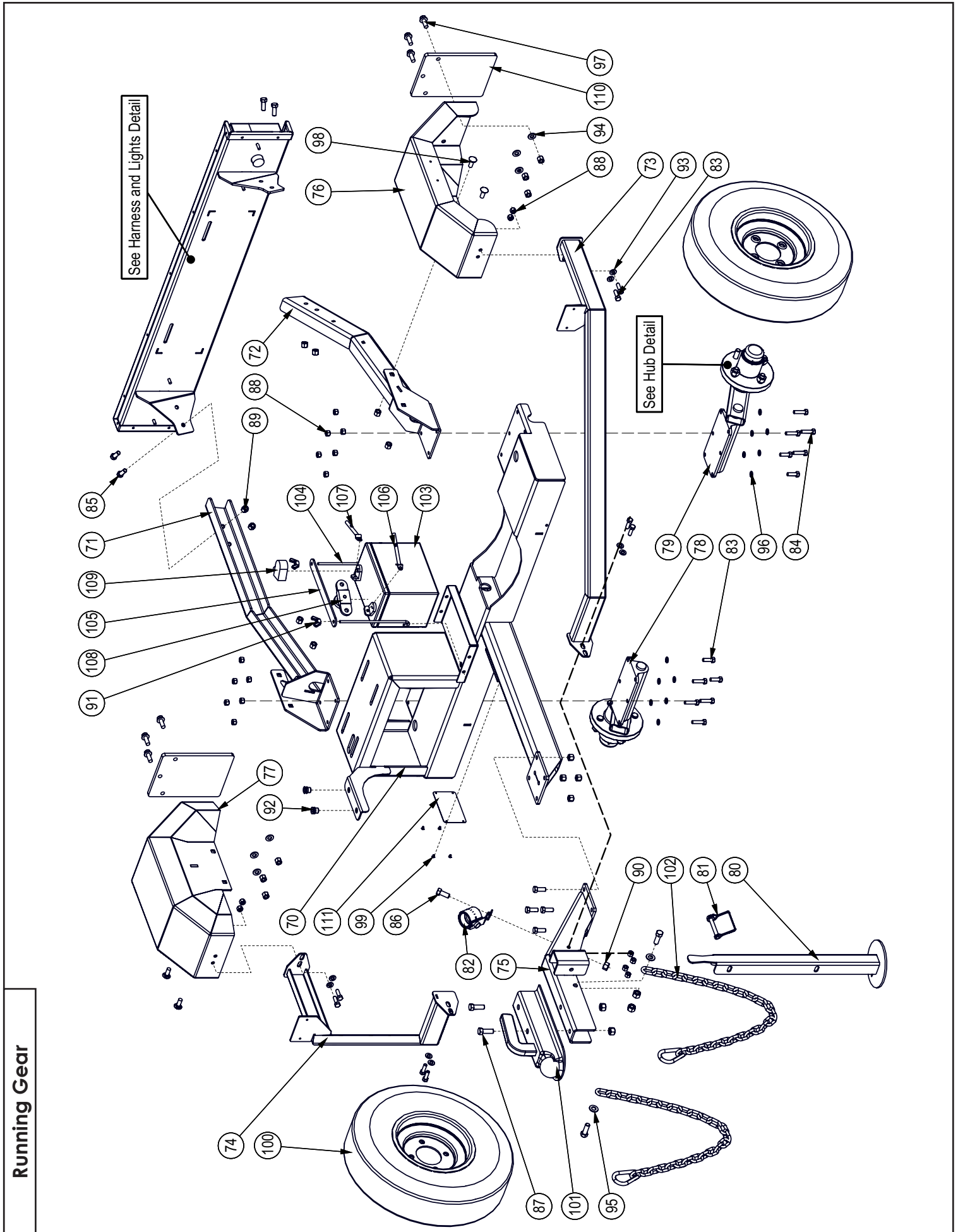
Wheel Size	Torque Unit	1st Stage	2nd Stage	3rd Stage
8"	ft-lbs	12 - 20	30 - 35	45 - 55
	Nm	16 - 26	39 - 45.5	58.5 - 71.5
12"	ft-lbs	20 - 25	35 - 40	50 - 60
	Nm	26 - 32.5	45.5 - 52	65 - 78
13"	ft-lbs	20 - 25	35 - 40	50 - 60
	Nm	26 - 32.5	45.5 - 52	65 - 78
14"	ft-lbs	20 - 25	50 - 60	90 - 120
	Nm	26 - 32.5	65 - 78	117 - 156
15"	ft-lbs	20 - 25	50 - 60	90 - 120
	Nm	26 - 32.5	65 - 78	117 - 156
16"	ft-lbs	20 - 25	50 - 60	90 - 120
	Nm	26 - 32.5	65 - 78	117 - 156



Driveline

BOM ID	Description	Description	Qty
1	1056W006	Shield	1
2	1056W611	Belt Tightener	1
3	Z41160	Belt, "B" x 64	1
4	1056L665	Clutch Washer	1
5	Z41510	Hub, L x 1"	1
6	Z41613	Sheave, MBL74 x L	1
7	Z41803	Centrifugal Clutch, 1B36 x 1"	1
8	Z46531	Key, 1/4" x 1/4" x 2"	1
9	Z46534	Key, 1/4" x 1/4" x 1-1/4"	1
10	Z47147	Honda GX390JQXE6, Electric	1
11	Z71110	Hex Bolt, 1/4NC x 1"	2
12	Z71377	Hex Bolt, 3/8NF x 1-1/2"	1
13	Z71390	Hex Bolt, 3/8NC x 5" Full Threads	1
14	Z72956	Rivet Nut, 5/16NC x 150	2
15	Z73131	SAE Washer, 3/8"	5
16	Z74102	Set Screw, #10NC x 1/4"	1
17	Z76121	Flange Bolt, 5/16NC x 3/4"	4
18	Z76138	Flange Bolt, 3/8NC x 1-3/4"	4
19	Z92110	Aircraft Cable, 1/16" x 24"	1





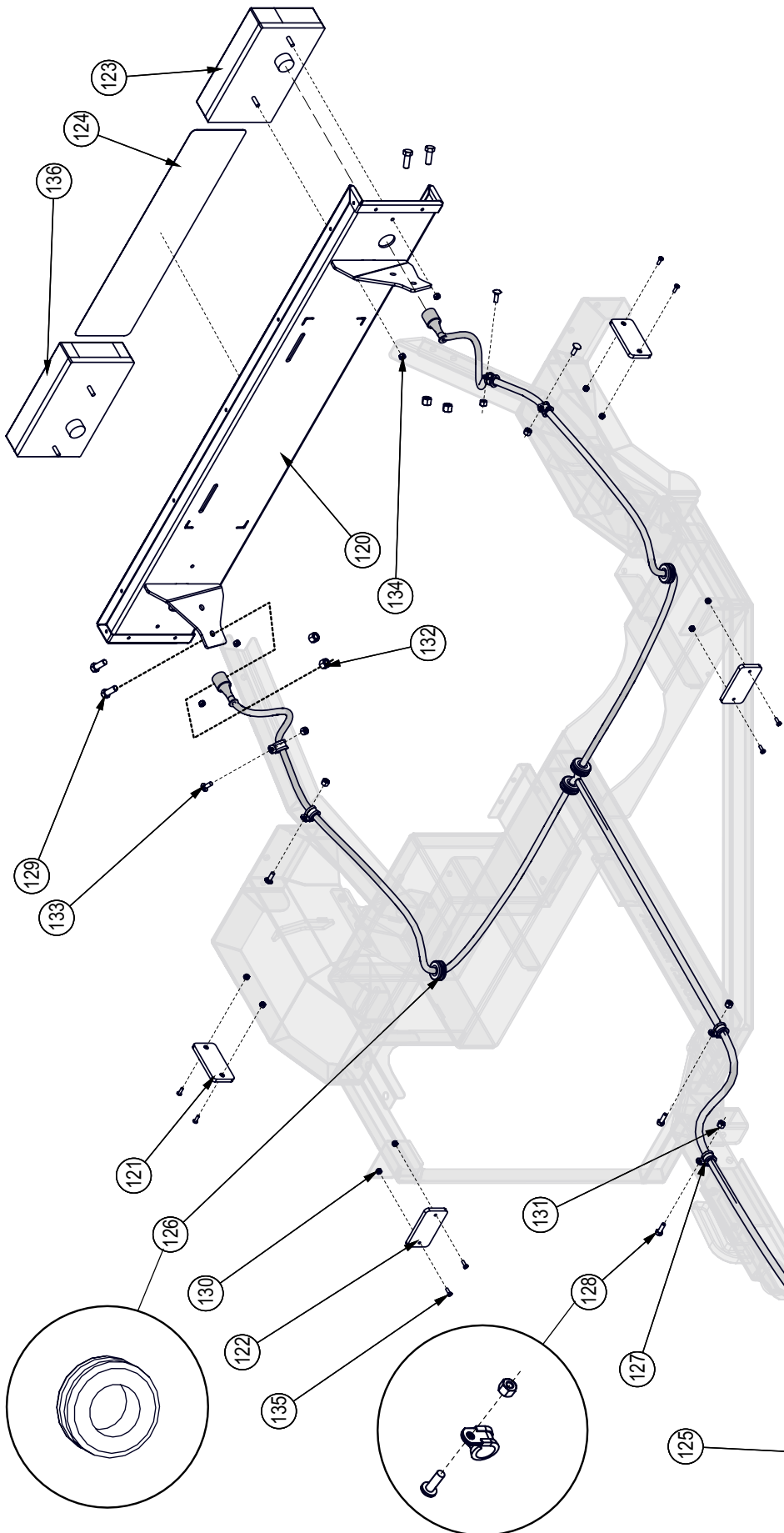
Running Gear

Running Gear - Continued

BOM ID	Description	Description	Qty
92	Z72956	Rivet Nut, 5/16NC x 150	2
93	Z73122	SAE Washer, 5/16"	8
94	Z73131	SAE Washer, 3/8"	6
95	Z73142	SAE Washer, 7/16"	2
96	Z73321	Split Lock Washer, 5/16"	12
97	Z76134	Flange Bolt, 3/8NC x 1"	6
98	Z76231	Carriage Bolt, 3/8NC x 1"	4
99	Z79307	Aluminum Dome Head Rivet, 1/8" x 125	4
100	Z91321	4.80-8 LRC USA Trail 4on4" (E-marked)	2
101	Z91620	Hitch Coupler, 50mm Ball x 50mm x 750kg	1
102	Z92307	Safety Chain, 1/4" x 3ft with Snap	2
103	Z93201	Battery, 250CCA	1
104	Z93202	J-Hook, 1/4" x 7"	2
105	Z93207	Hold-Down Strap, 1" x 8-1/2"	1
106	Z93210	Battery Cable, Negative x 25"	1
107	Z93212	Battery Cable, Positive x 28"	1
108	Z93402	Manual Battery Lead Disconnect	1
109	Z93403	Garden Tractor Terminal Protector - Red	1
110	2054S655	Rain Flap	2
111	1056S003	CE Stat Plate	1

BOM ID	Description	Description	Qty
70	1056W001	Main Base	1
71	1056W009H	Weldment, Light Bar Mount RH	1
72	1056W009	Weldment, Light Bar Mount LH	1
73	1056W007	Lateral Bar, LH	1
74	1056W007H	Lateral Bar, RH	1
75	1056W002	Hitch	1
76	2054W652	LEU Fender Weldment, LH	1
77	2054W652H	LEU Fender Weldment, RH	1
78	1056A602	Torflex with Hub, RH	1
79	1056A603	Torflex with Hub, LH	1
80	1056W402	Jack Stand	1
81	Z12432	Snap Lock Pin, 3/8" x 2-1/2"	1
82	Z62121	CE Plug Holder, 13 & 7-Pin	1
83	Z71210	Hex Bolt, 5/16NC x 1"	12
84	Z71212	Hex Bolt, 5/16NC x 1-1/4"	8
85	Z71310	Hex Bolt, 3/8NC x 1"	8
86	Z71410	Hex Bolt, 7/16NC x 1"	1
87	Z71412	Hex Bolt, 7/16NC x 1-1/4"	4
88	Z72221	Hex Lock Nut, 5/16NC	20
89	Z72231	Hex Lock Nut, 3/8NC	18
90	Z72241	Hex Lock Nut, 7/16NC	5
91	Z72921	Wing Nut, 1/4NC	2

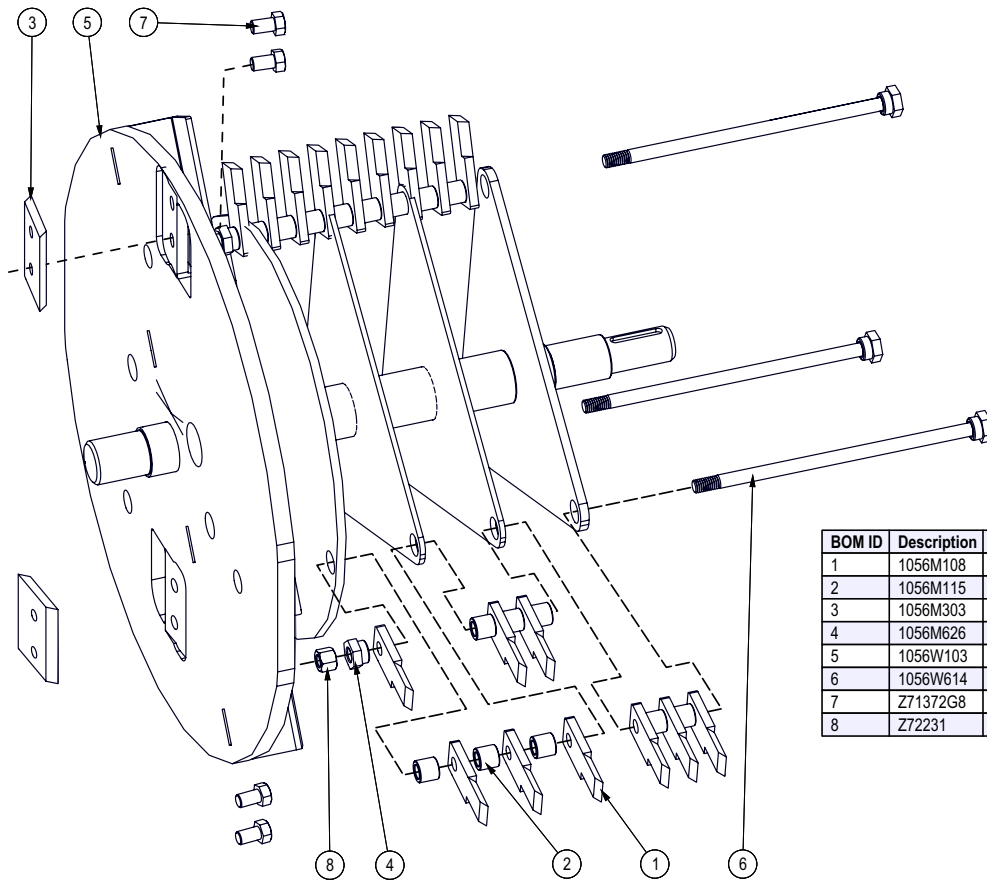
Lights and Harness Detail



BOM ID	Description	Description	Qty
129	Z71310	Hex Bolt, 3/8NC x 1"	4
130	Z72202	Hex Lock Nut, #8NC	8
131	Z72211	Hex Lock Nut, 1/4NC	6
132	Z72231	Hex Lock Nut, 3/8NC	4
133	Z76211	Carriage Bolt, 1/4NC x 3/4"	4
134	Z77231	Hex Nut, M6x1.0	4
135	Z78309	Machine Screw, #8NC x 1/2"	8
136	Z61113	CE Combo Light RH O1 Fog	1

BOM ID	Description	Description	Qty
120	1056W008	LEU Light Bar	1
121	Z61207	Side Yellow Reflex Reflector CE	2
122	Z61206	Front White Reflex Reflector CE	2
123	Z61112	CE Combo Light LH O1 Fog	1
124	Z61306	EU Number Plate	1
125	Z62115	Harness, BXMT3213-LEU Lights	1
126	Z62818	Rubber Grommet, 3/4" x 3/16"	4
127	Z62819	Rubberized Wire Clamp, 1/2"	6
128	Z71107	Hex Bolt, 1/4NC x 3/4"	2

Rotor Detail Parts Assembly

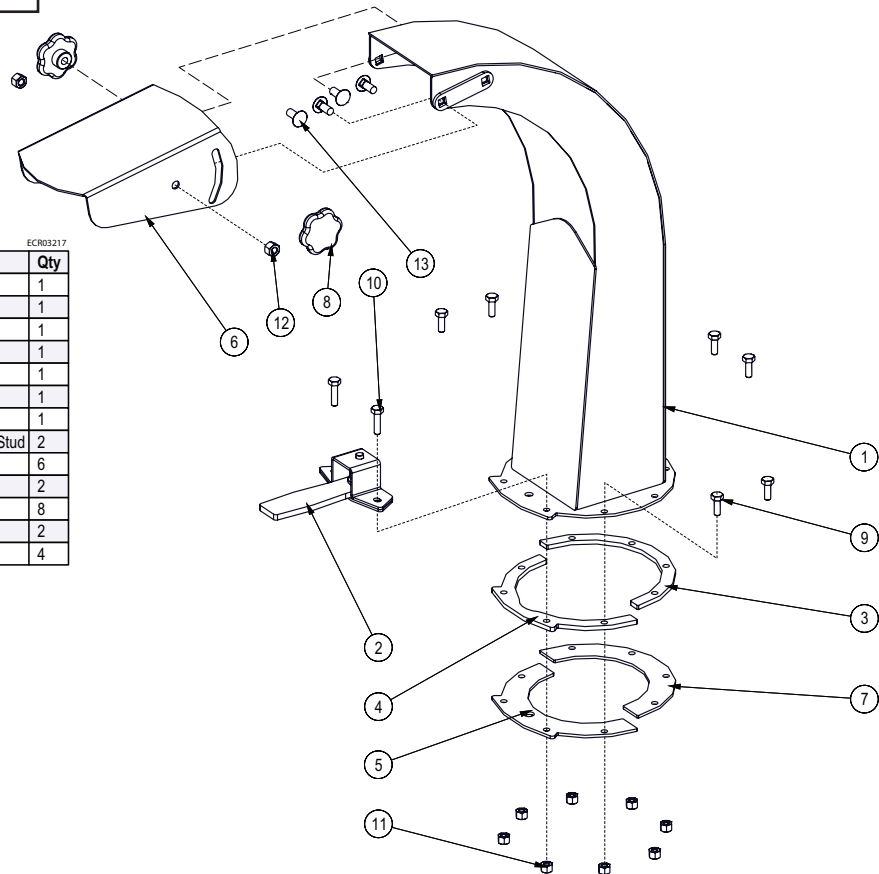


BOM ID	Description	Description	Qty
1	1056M108	Knife,Shredder	27
2	1056M115	Spacer, Shredder .580	24
3	1056M303	Knife, 3" Rotor	2
4	1056M626	Retainer Rod Head	3
5	1056W103	Rotor	1
6	1056W614	Hammer Retainer Pin	3
7	Z71372G8	Hex Bolt, 3/8NF x 5/8" G8	4
8	Z72231	Hex Lock Nut, 3/8NC	3

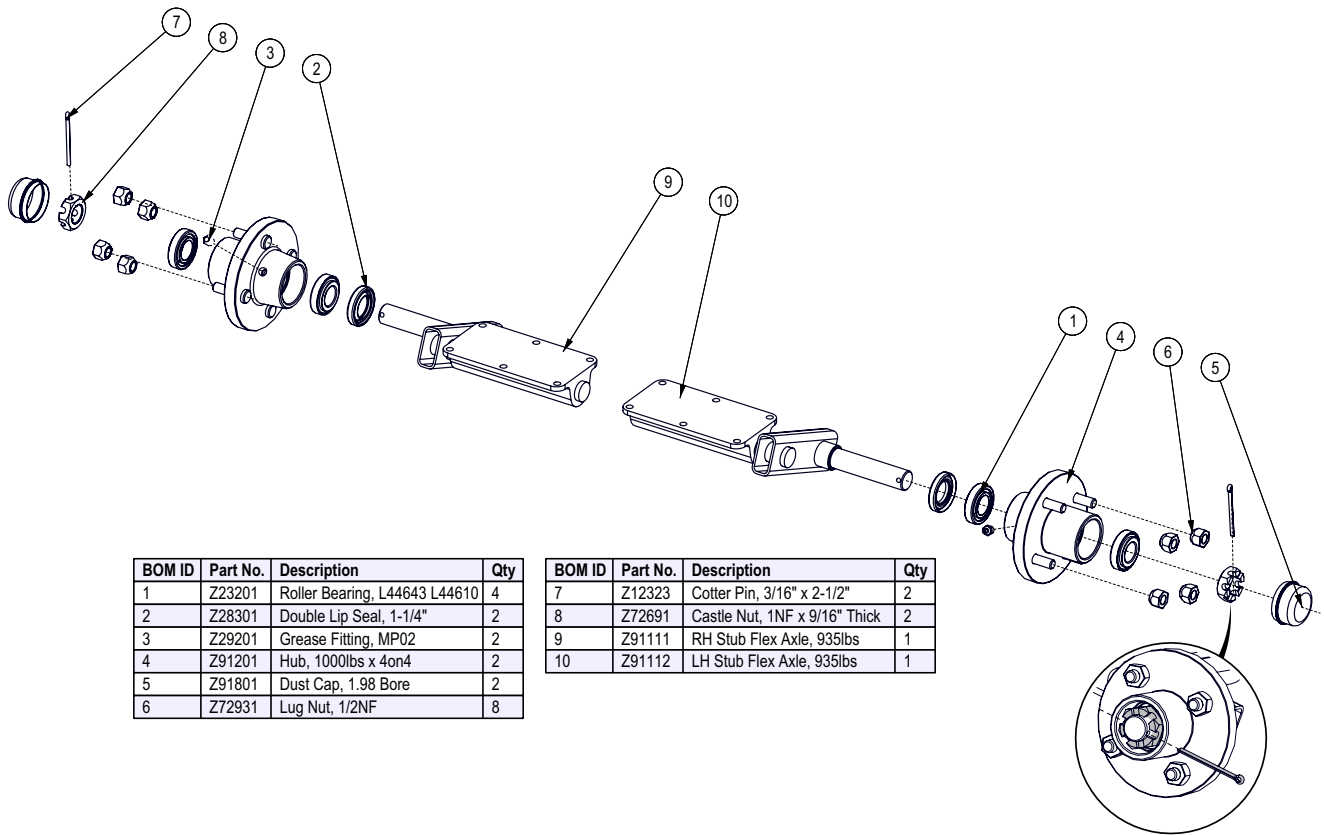
Discharge Chute Assembly

ECR03217

BOM ID	Description	Description	Qty
1	1056W307	Discharge Chute	1
2	1012W208	Assembly, Hood Latch	1
3	1056L327	Ring	1
4	1056L329	Plate, Spacer Ring	1
5	1056L330	Plate, Hood Capture	1
6	1056L333	Deflector, Discharge Chute	1
7	1056L334	Ring	1
8	Z19313	Hand Knob, 5/16NC Female Stud	2
9	Z71107	Hex Bolt, 1/4NC x 3/4"	6
10	Z71110	Hex Bolt, 1/4NC x 1"	2
11	Z72211	Hex Lock Nut, 1/4NC	8
12	Z72221	Hex Lock Nut, 5/16NC	2
13	Z76221	Carriage Bolt, 5/16NC x 3/4"	4



Hub Assembly

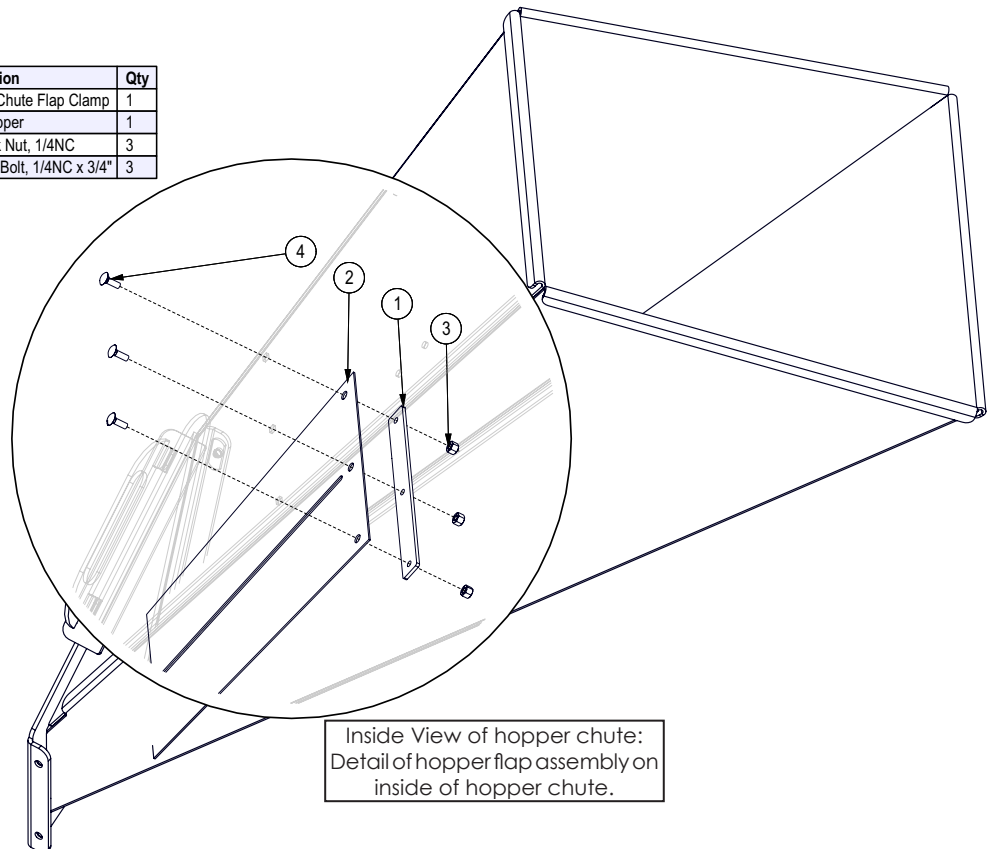


BOM ID	Part No.	Description	Qty
1	Z23201	Roller Bearing, L44643 L44610	4
2	Z28301	Double Lip Seal, 1-1/4"	2
3	Z29201	Grease Fitting, MP02	2
4	Z91201	Hub, 1000lbs x 4on4	2
5	Z91801	Dust Cap, 1.98 Bore	2
6	Z72931	Lug Nut, 1/2NF	8

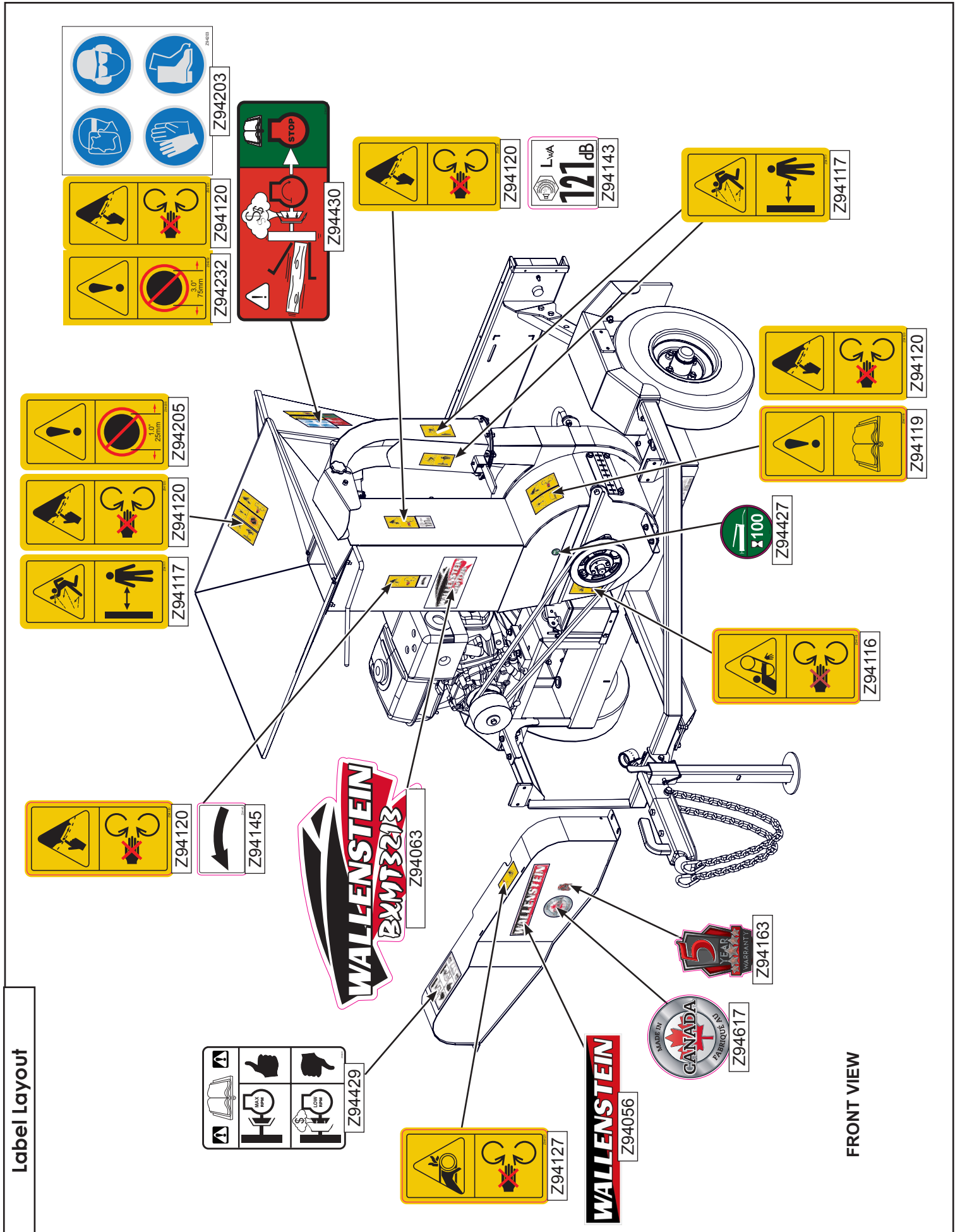
BOM ID	Part No.	Description	Qty
7	Z12323	Cotter Pin, 3/16" x 2-1/2"	2
8	Z72691	Castle Nut, 1NF x 9/16" Thick	2
9	Z91111	RH Stub Flex Axle, 935lbs	1
10	Z91112	LH Stub Flex Axle, 935lbs	1

Hopper Flap Detail

BOM ID	Description	Description	Qty
1	1018L994	Chipper Chute Flap Clamp	1
2	1056S604	Flap, Hopper	1
3	Z72211	Hex Lock Nut, 1/4NC	3
4	Z76211	Carriage Bolt, 1/4NC x 3/4"	3

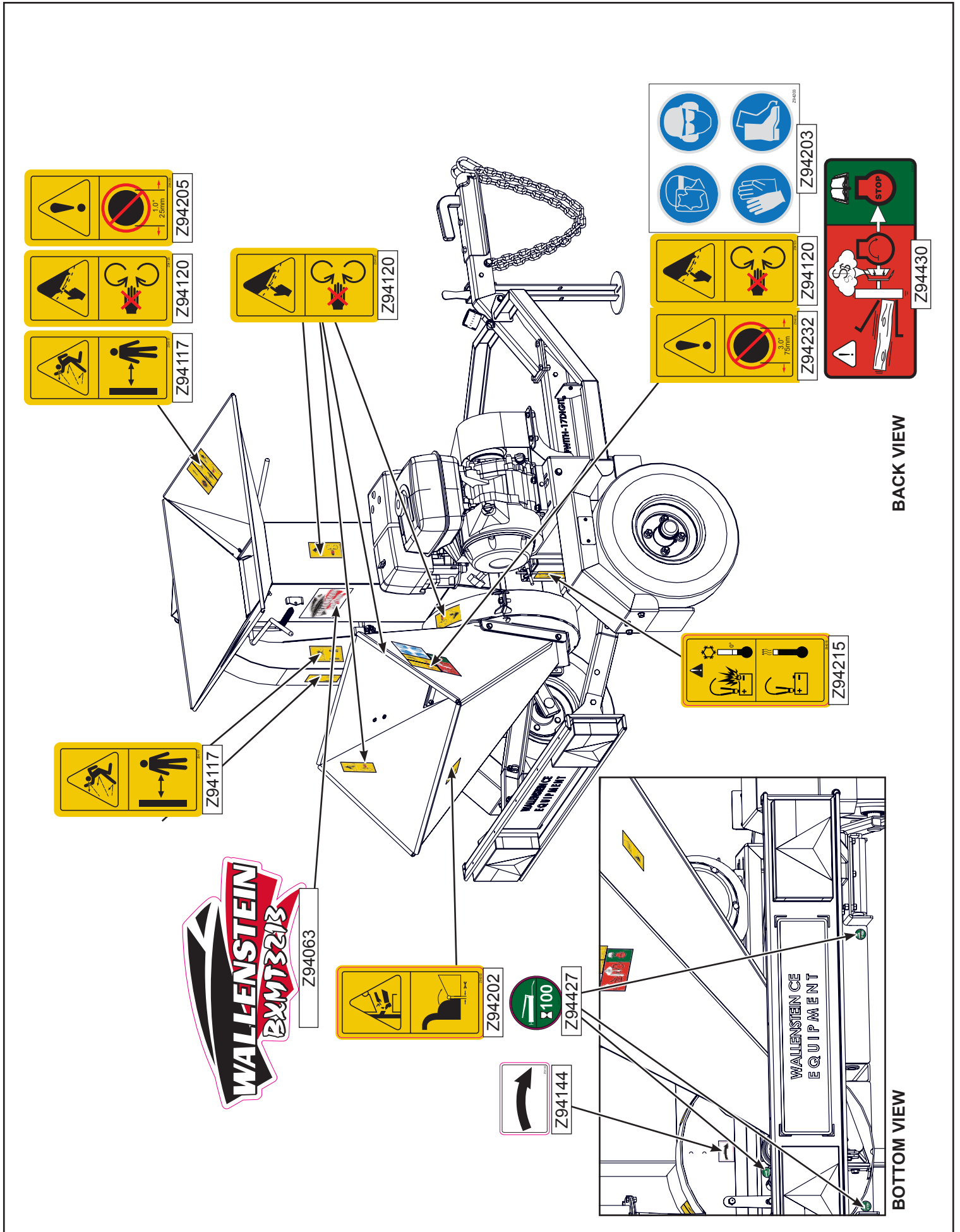


Inside View of hopper chute:
Detail of hopper flap assembly on
inside of hopper chute.



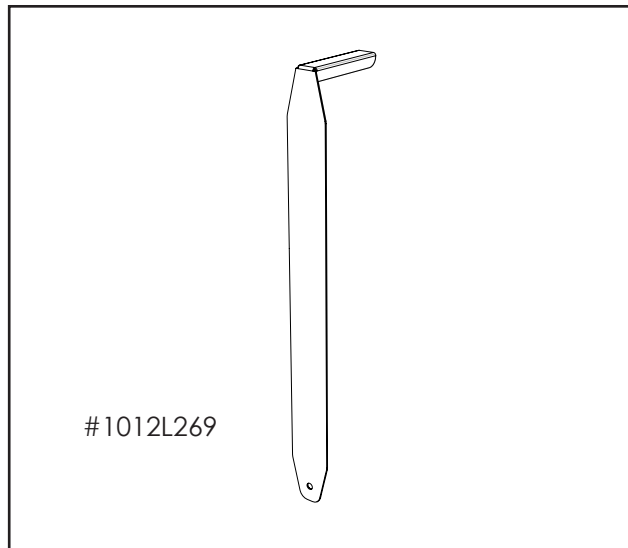
Label Layout

FRONT VIEW



Accessories

Call your dealer for pricing and availability



#1012L269

#1012L269 LEDGER CLEARANCE SETTING GAUGE

An easy and accurate way of setting the critical clearances between the ledger blade and the rotor chipper blade.



**#Z97056
BXMT TRAILER
CHIPPER / SHREDDER
OPERATOR'S MANUAL**

Available as a download at
www.wallensteinequipment.com