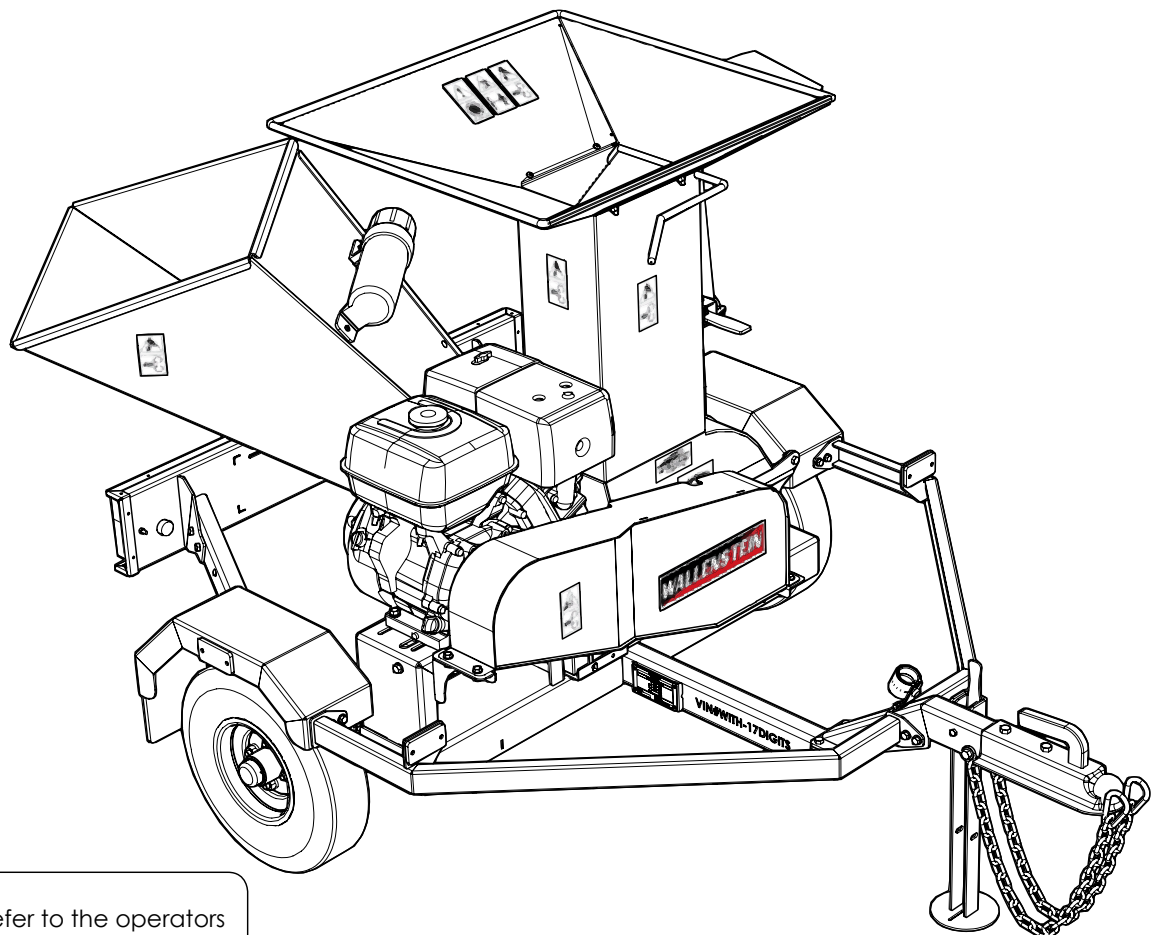


# WALLENSTEIN

EMB Manufacturing Inc.  
4144 Boomer Line · St. Clements, On · N0B 2M0 · Canada  
Ph: (519) 699-9283 · Fax: (519) 699-4146  
www.embmfg.com

## BXMT3213EU Trailer Splitter / Shredder Parts Manual

S/N 2E9US1113ES080022 & After



Refer to the operators  
manual for safe  
operation and  
maintenance

## Foreword

EMB Mfg. has prepared this parts manual to assist customers in ordering quality OEM replacement parts.

Proper and regular service and replacing old, worn or broken parts with the correct Wallenstein parts are essential to prolonging the life of your Wallenstein product. Please refer to this manual before ordering any replacement parts.

All information contained in this parts manual is based on the latest product specification available at the time of printing this manual. If your product differs from the specifications contained within this manual contact EMB Mfg. for information.

EMB reserves the right to alter specifications on their products at any time.

Reproduction of this parts manual of any kind is prohibited without prior written permission from EMB Mfg.

For parts and information please contact your dealer. If your dealer is no longer available please go to our website: <http://www.embmfg.com> and click on "FIND A DEALER NEAR YOU" for information on a local dealer.

# Table of Contents

<b>Bolt Torque.....</b>	<b>4</b>
<b>Wheel Lug Torque .....</b>	<b>5</b>
<b>Main Assembly .....</b>	<b>6</b>
<b>Driveline Assembly .....</b>	<b>7</b>
<b>Running Gear Assembly .....</b>	<b>8</b>
<b>Electrical Harness Detail .....</b>	<b>9</b>
<b>Running Gear Assembly cont' .....</b>	<b>9</b>
<b>Rotor Detail Parts Assembly .....</b>	<b>10</b>
<b>Chute Assembly .....</b>	<b>10</b>
<b>Hub Assembly .....</b>	<b>11</b>
<b>Label Layout.....</b>	<b>12</b>
<b>Accessories.....</b>	<b>13</b>

**Bolt Torque**

**CHECKING BOLT TORQUE**

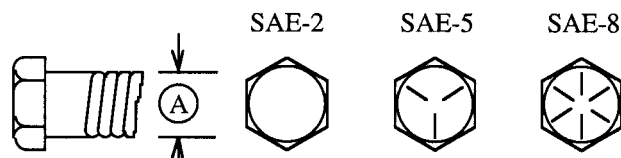
The tables shown below give correct torque values for various bolts and capscrews. Tighten all bolts to the torques specified in chart unless otherwise noted. Check tightness of bolts periodically, using bolt torque chart as a guide. Replace hardware with the same strength bolt.

Torque figures indicated above are valid for non-greased or non-oiled threads and heads unless otherwise specified. Therefore, do not grease or oil bolts or capscrews unless otherwise specified in this manual. When using locking elements, increase torque values by 5%.

\* Torque value for bolts and capscrews are identified by their head markings.

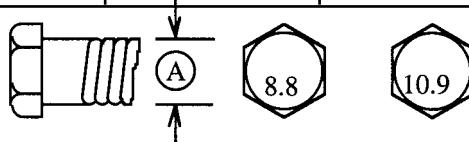
**ENGLISH TORQUE SPECIFICATIONS**

Bolt Diameter "A"	Bolt Torque*					
	SAE 2 (N.m) (lb-ft)		SAE 5 (N.m) (lb-ft)		SAE 8 (N.m) (lb-ft)	
1/4"	8	6	12	9	17	12
5/16"	13	10	25	19	36	27
3/8"	27	20	45	33	63	45
7/16"	41	30	72	53	100	75
1/2"	61	45	110	80	155	115
9/16"	95	60	155	115	220	165
5/8"	128	95	215	160	305	220
3/4"	225	165	390	290	540	400
7/8"	230	170	570	420	880	650
1"	345	225	850	630	1320	970



**METRIC TORQUE SPECIFICATIONS**

Bolt Diameter "A"	Bolt Torque*			
	8.8 (N.m) (lb-ft)		10.9 (N.m) (lb-ft)	
M3	.5	.4	1.8	1.3
M4	3	2.2	4.5	3.3
M5	6	4	9	7
M6	10	7	15	11
M8	25	18	35	26
M10	50	37	70	52
M12	90	66	125	92
M14	140	103	200	148
M16	225	166	310	229
M20	435	321	610	450
M24	750	553	1050	774
M30	1495	1103	2100	1550
M36	2600	1917	3675	2710



**Wheel Lug Torque**

It is extremely important safety procedure to apply and maintain proper wheel mounting torque on your trailer axle. Torque wrenches are the best method to assure the proper amount of torque is being applied to a fastener.

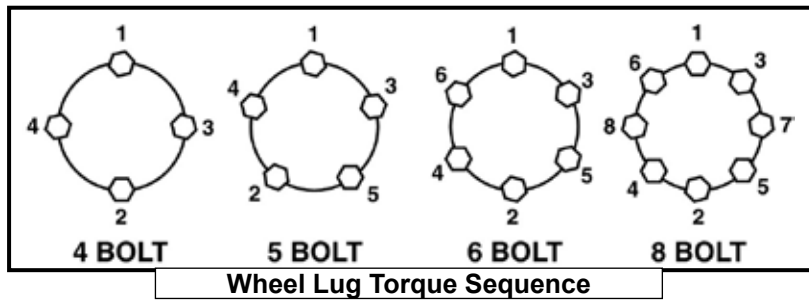
Wheel lugs should be torqued before first road use and after each wheel removal. Check and re torque after the first 16Km (10 miles), 40Km (25 miles), and again at 80Km (50 miles). Check periodically thereafter.

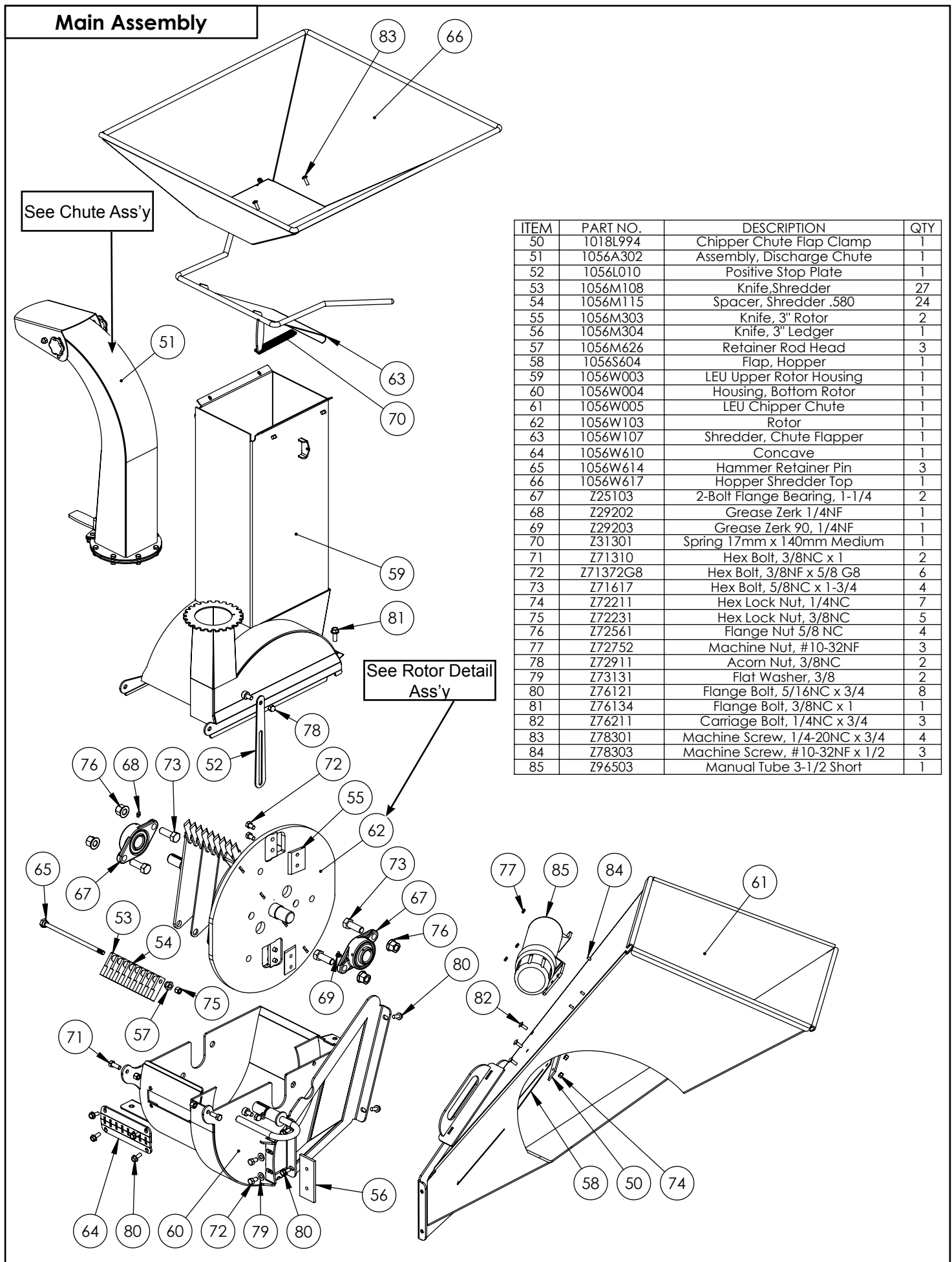
Note: Wheel lugs must be applied and maintained at the proper torque levels to prevent loose wheels, broken studs, and possible dangerous separation of wheels from your axle.

- Start all lugs by hand to prevent cross threading.
- Tighten lugs in sequence, per wheel lug torque sequence chart.
- The tightening of the fasteners should be done in stages. Following the recommended sequence, tighten fasteners per wheel torque requirements chart.

**Wheel Torque Requirements**

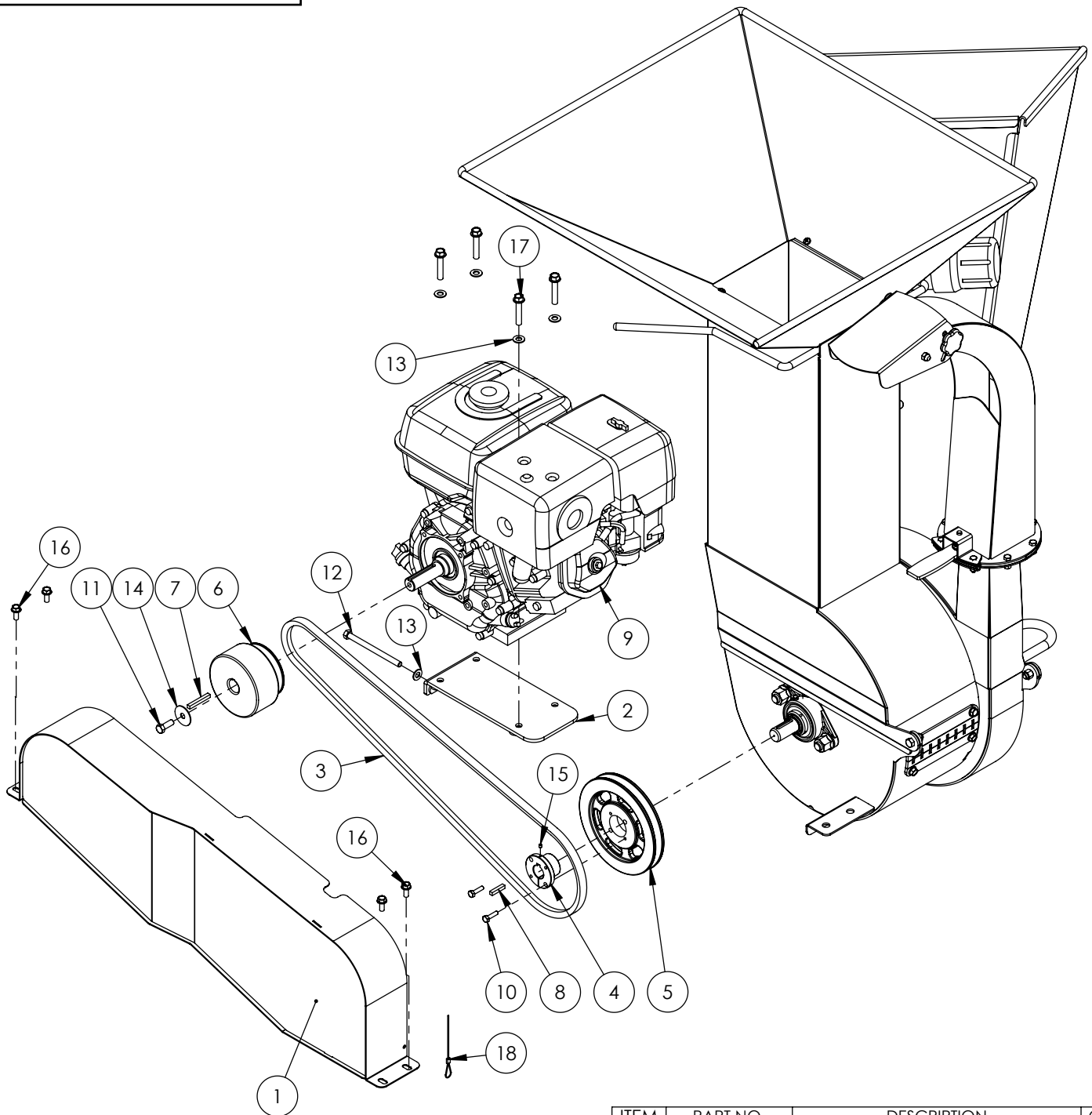
Wheel Size	Torque Unit	1st Stage	2nd Stage	3rd Stage
8"	ft-lbs	12 - 20	30 - 35	45 - 55
	Nm	16 - 26	39 - 45.5	58.5 - 71.5
12"	ft-lbs	20 - 25	35 - 40	50 - 60
	Nm	26 - 32.5	45.5 - 52	65 - 78
13"	ft-lbs	20 - 25	35 - 40	50 - 60
	Nm	26 - 32.5	45.5 - 52	65 - 78
14"	ft-lbs	20 - 25	50 - 60	90 - 120
	Nm	26 - 32.5	65 - 78	117 - 156
15"	ft-lbs	20 - 25	50 - 60	90 - 120
	Nm	26 - 32.5	65 - 78	117 - 156
16"	ft-lbs	20 - 25	50 - 60	90 - 120
	Nm	26 - 32.5	65 - 78	117 - 156



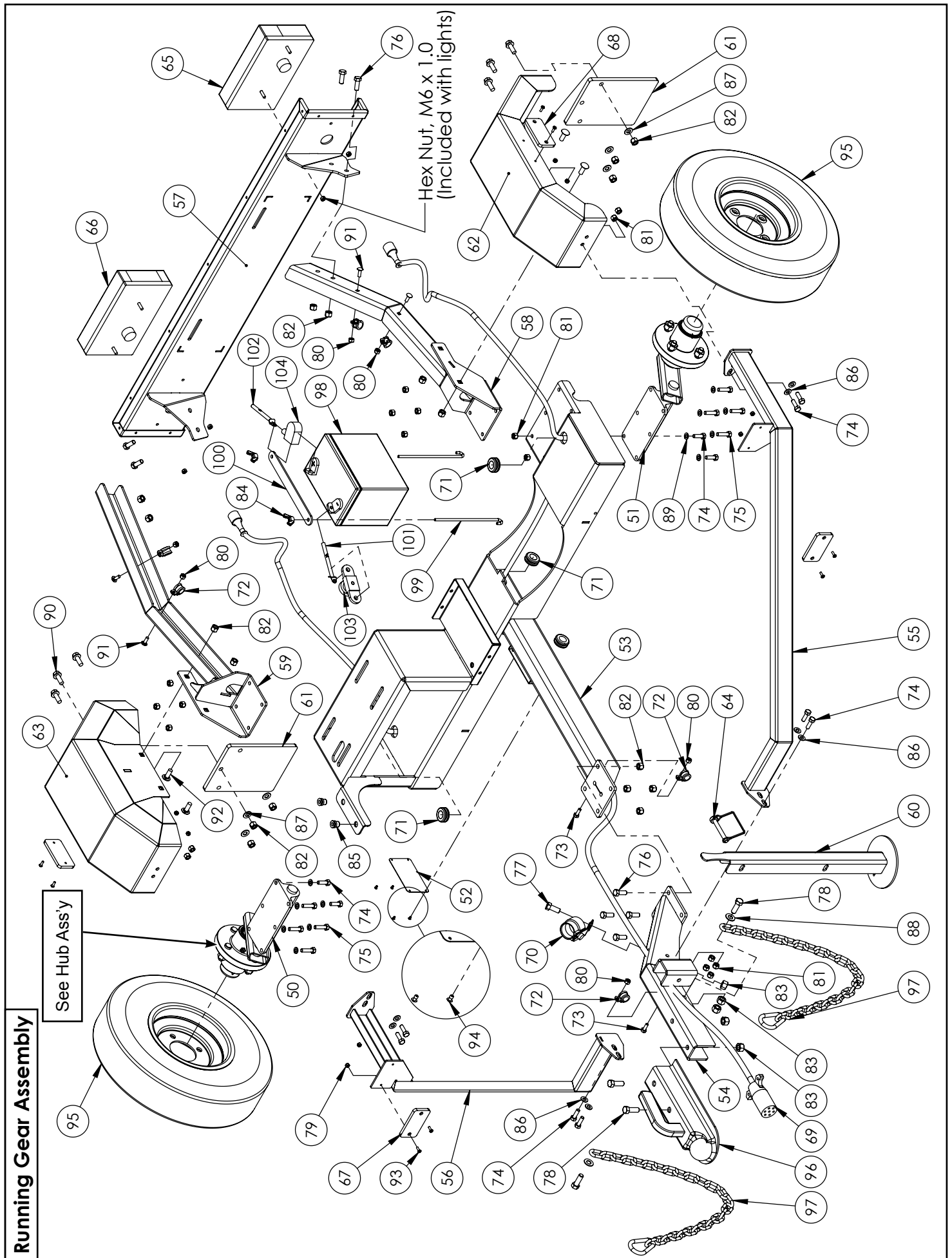


ITEM	PART NO.	DESCRIPTION	QTY
50	1018L994	Chipper Chute Flap Clamp	1
51	1056A302	Assembly, Discharge Chute	1
52	1056L010	Positive Stop Plate	1
53	1056M108	Knife, Shredder	27
54	1056M115	Spacer, Shredder .580	24
55	1056M303	Knife, 3" Rotor	2
56	1056M304	Knife, 3" Ledger	1
57	1056M626	Retainer Rod Head	3
58	1056S604	Flap, Hopper	1
59	1056W003	LEU Upper Rotor Housing	1
60	1056W004	Housing, Bottom Rotor	1
61	1056W005	LEU Chipper Chute	1
62	1056W103	Rotor	1
63	1056W107	Shredder, Chute Flapper	1
64	1056W610	Concave	1
65	1056W614	Hammer Retainer Pin	3
66	1056W617	Hopper Shredder Top	1
67	Z25103	2-Bolt Flange Bearing, 1-1/4	2
68	Z29202	Grease Zerk 1/4NF	1
69	Z29203	Grease Zerk 9/0, 1/4NF	1
70	Z31301	Spring 17mm x 140mm Medium	1
71	Z71310	Hex Bolt, 3/8NC x 1	2
72	Z71372G8	Hex Bolt, 3/8NF x 5/8 G8	6
73	Z71617	Hex Bolt, 5/8NC x 1-3/4	4
74	Z72211	Hex Lock Nut, 1/4NC	7
75	Z72231	Hex Lock Nut, 3/8NC	5
76	Z72561	Flange Nut 5/8 NC	4
77	Z72752	Machine Nut, #10-32NF	3
78	Z72911	Acorn Nut, 3/8NC	2
79	Z73131	Flat Washer, 3/8	2
80	Z76121	Flange Bolt, 5/16NC x 3/4	8
81	Z76134	Flange Bolt, 3/8NC x 1	1
82	Z76211	Carriage Bolt, 1/4NC x 3/4	3
83	Z78301	Machine Screw, 1/4-20NC x 3/4	4
84	Z78303	Machine Screw, #10-32NF x 1/2	3
85	Z96503	Manual Tube 3-1/2 Short	1

**Driveline Assembly**

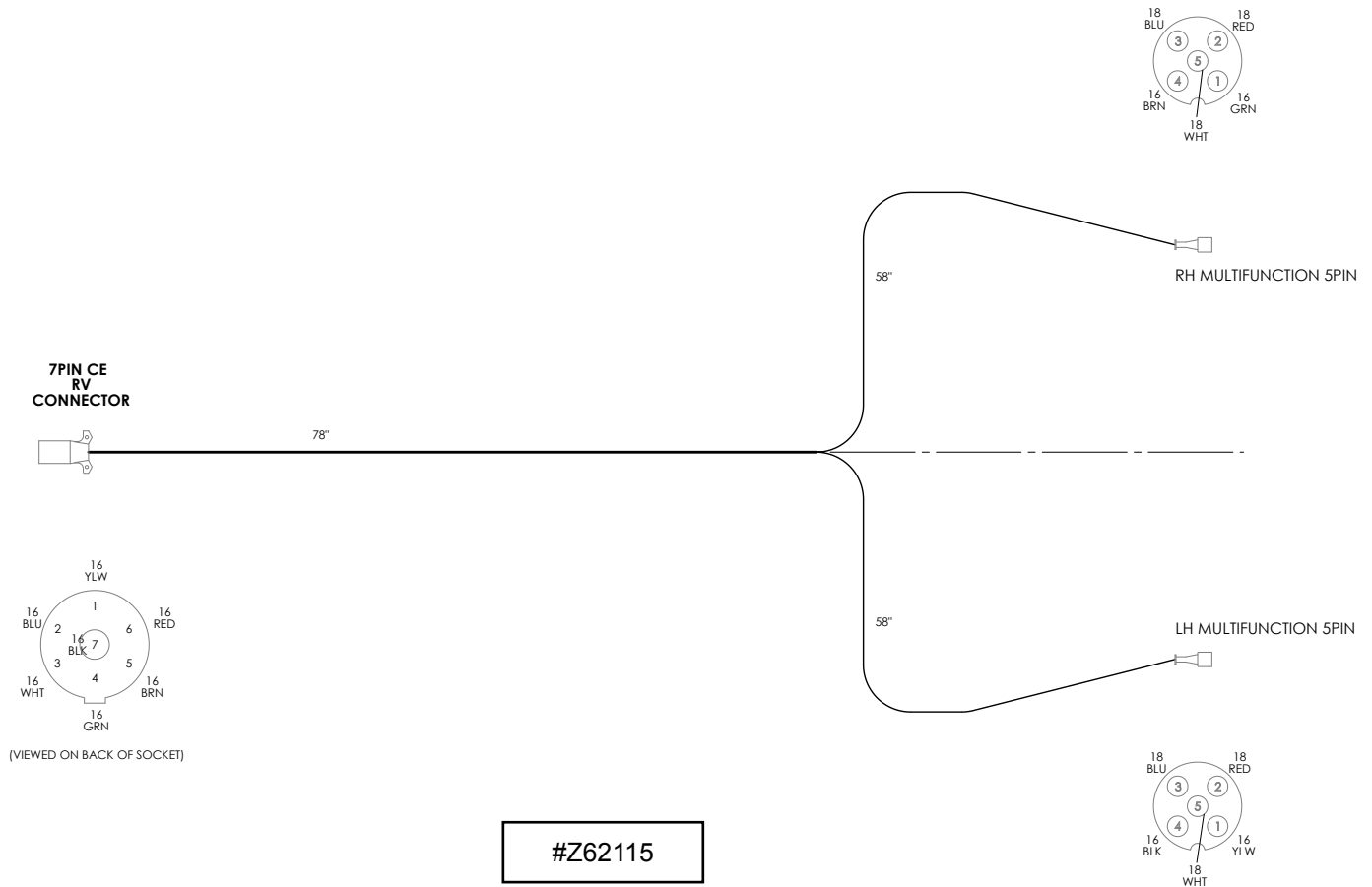


ITEM	PART NO.	DESCRIPTION	QTY
1	1056W006	Shield	1
2	1056W611	Belt Tightener	1
3	Z41160	Belt, "B" x 64	1
4	Z41510	"L" Bushing 1" Bore	1
5	Z41613	Sheave, 7.35P "L"	1
6	Z41803	Centrifugal Clutch, 3.9P	1
7	Z46531	Key, 1/4 x 1/4 x 2	1
8	Z46534	Key, 1/4 x 1/4 x 1-1/4	1
9	Z47147	GX390E 13HP Engine	1
10	Z71110	Hex Bolt, 1/4NC x 1	2
11	Z71374	Hex Bolt, 3/8NF x 1	1
12	Z71390	Hex Bolt, 3/8NC x 5 Full Threads	1
13	Z73131	Flat Washer, 3/8	5
14	Z73232	Wide Thin Washer, 3/8	1
15	Z74102	Set Screw #10-24 x 1/4	1
16	Z76121	Flange Bolt, 5/16NC x 3/4	4
17	Z76135	Flange Bolt, 3/8NC x 2	4
18	Z92110	1/16 Aircraft cable x 2'	1





**Electrical Harness Detail**

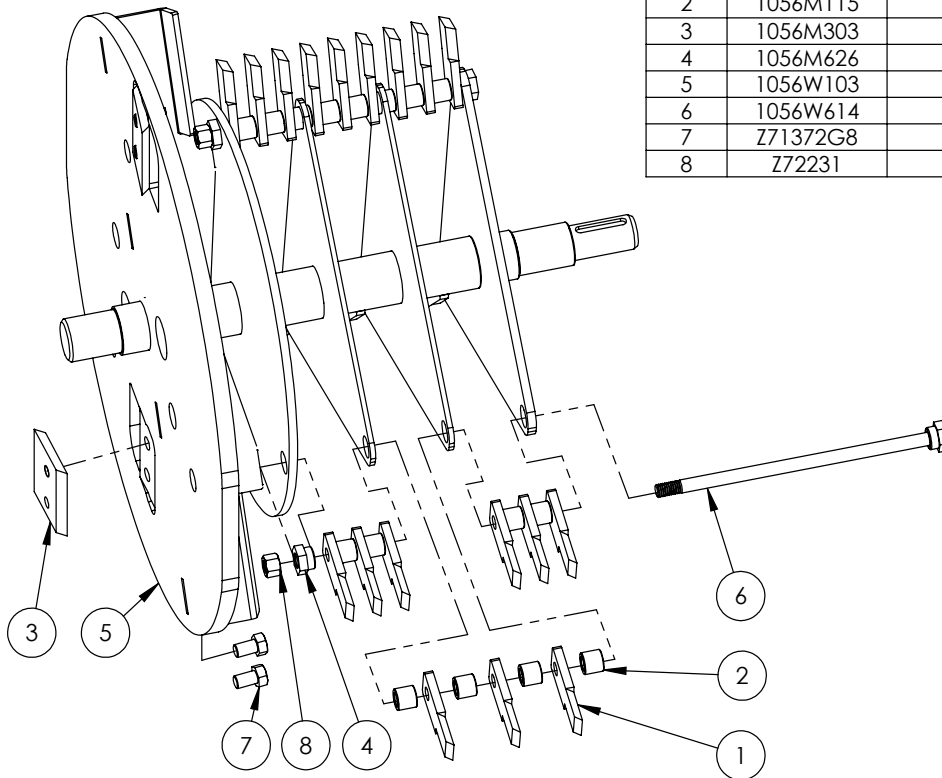


**Running Gear Assembly cont'**

ITEM	PART NO.	DESCRIPTION	QTY
50	1056A602	Torflex with Hub, RH	1
51	1056A603	Torflex with Hub, LH	1
52	1056S003	CE Stat Plate	1
53	1056W001	Main Base	1
54	1056W002	Hitch	1
55	1056W007	Lateral Bar, LH	1
56	1056W007H	Lateral Bar, RH	1
57	1056W008	LEU Light Bar	1
58	1056W009	Weldment, Light Bar Mount LH	1
59	1056W009H	Weldment, Light Bar Mount RH	1
60	1056W402	Jack Stand	1
61	2054S655	Rain Flap	2
62	2054W652	LEU Fender Weldment, LH	1
63	2054W652H	LEU Fender Weldment, RH	1
64	Z12432	Snapper Pin 3/8 x 2-1/2	1
65	Z61112	CE Combo Light LH O1 Fog	1
66	Z61113	CE Combo Light RH O1 Fog	1
67	Z61206	Front White Reflex Reflector CE	2
68	Z61207	Side Yellow Reflex Reflector CE	2
69	Z62115	BXMT3213-LEU Light Harness	1
70	Z62121	Euro Plug Holder (13 & 7 pin)	1
71	Z62818	Rubber Grammet 3/4 x 3/16	4
72	Z62819	Rubberized Wire Clamp, 1/2"	6
73	Z71107	Hex Bolt, 1/4NC x 3/4	2
74	Z71210	Hex Bolt, 5/16NC x 1	12
75	Z71212	Hex Bolt, 5/16NC x 1-1/4	8
76	Z71310	Hex Bolt, 3/8NC x 1	8
77	Z71410	Hex Bolt, 7/16NC x 1	1
78	Z71412	Hex Bolt, 7/16NC x 1-1/4	4
79	Z72202	Hex Lock Nut #8NC	8
80	Z72211	Hex Lock Nut, 1/4NC	6
81	Z72221	Hex Lock Nut, 5/16NC	20
82	Z72231	Hex Lock Nut, 3/8NC	18
83	Z72241	Hex Lock Nut, 7/16NC	5
84	Z72921	Wing Nut 1/4NF	2
85	Z72956	Riv-Nut 5/16NC x 1.50	2
86	Z73122	Flat Washer, 5/16	8
87	Z73131	Flat Washer, 3/8	6
88	Z73142	Flat Washer, 7/16	2
89	Z73321	Lock Washer, 5/16	12
90	Z76134	Flange Bolt, 3/8NC x 1	6
91	Z76211	Carriage Bolt, 1/4NC x 3/4	4
92	Z76231	Carriage Bolt, 3/8NC x 1	4
93	Z78309	Machine Screw, #8-32NC x 1/2	8
94	Z79307	Dome Rivet, 1/8" x 1/8" Alum	4
95	Z91321	4.80-8 LRC USA Trail E-marked	2
96	Z91620	50mm Ball Hitch Coupler	1
97	Z92307	Safety Chain 1/4 x 3'	2
98	Z93201	250 CCA Battery	1
99	Z93202	J-Hook 1/4 x 7	2
100	Z93207	Hold-Down Strap, 1 x 8-1/2	1
101	Z93210	Battery Cable, Neg 25"	1
102	Z93212	Battery Cable, Pos 28"	1
103	Z93402	Manual Battery Lead Disconnect	1
104	Z93403	Garden Tractor Terminal Protector - Red	1

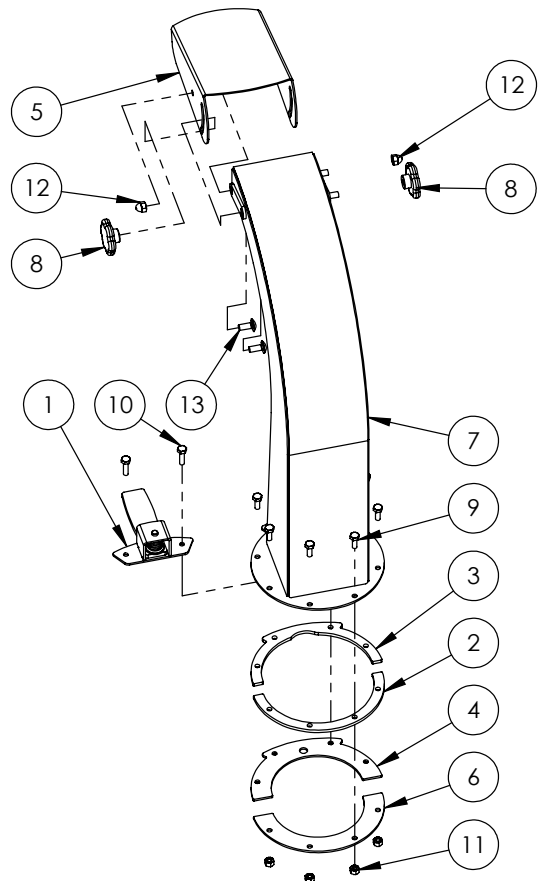
**Rotor Detail Parts Assembly**

ITEM	PART NO.	Description	QTY.
1	1056M108	Knife,Shredder	27
2	1056M115	Spacer, Shredder .580	24
3	1056M303	Knife, 3" Rotor	2
4	1056M626	Retainer Rod Head	3
5	1056W103	Rotor	1
6	1056W614	Hammer Retainer Pin	3
7	Z71372G8	Hex Bolt, 3/8NF x 5/8 G8	4
8	Z72231	Hex Lock Nut 3/8NC	3

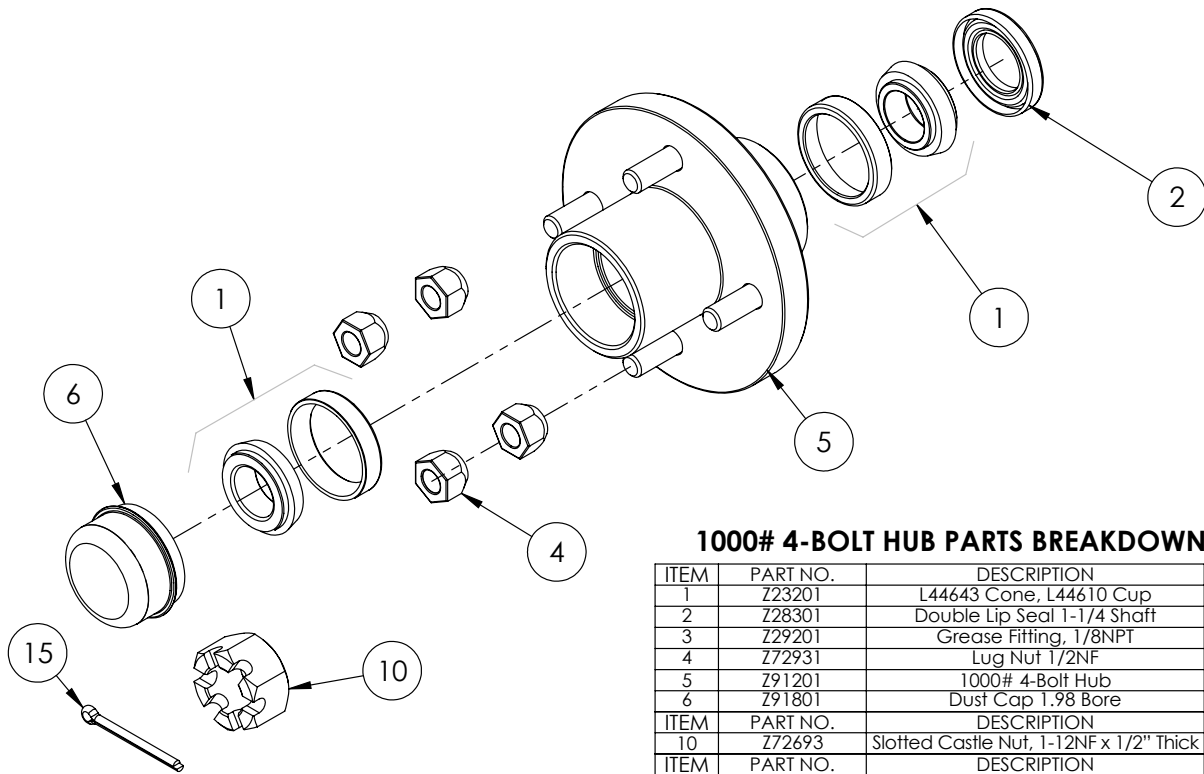


**Chute Assembly**

ITEM	PART NO.	Description	QTY.
1	1012W208	Assembly, Hood Latch	1
2	1056L327	Ring	1
3	1056L329	Plate, Spacer Ring	1
4	1056L330	Plate, Hood Capture	1
5	1056L333	Deflector, Discharge Chute	1
6	1056L334	Ring	1
7	1056W307	Discharge Chute	1
8	Z19313	Knob, 5/16NC Female Stud	2
9	Z71107	Hex Bolt 1/4NC x 3/4	6
10	Z71110	Hex Bolt 1/4NC x 1	2
11	Z72111	Hex Lock Nut 1/4NC	8
12	Z72914	Acorn Nut, 5/16NC	2
13	Z76221	Carriage Bolt 5/16NC x 3/4	4



**Hub Assembly**



**1000# 4-BOLT HUB PARTS BREAKDOWN**

ITEM	PART NO.	DESCRIPTION	QTY
1	Z23201	L44643 Cone, L44610 Cup	2
2	Z28301	Double Lip Seal 1-1/4 Shaft	1
3	Z29201	Grease Fitting, 1/8NPT	1
4	Z72931	Lug Nut 1/2NF	4
5	Z91201	1000# 4-Bolt Hub	1
6	Z91801	Dust Cap 1.98 Bore	1
ITEM	PART NO.	DESCRIPTION	QTY
10	Z72693	Slotted Castle Nut, 1-12NF x 1/2" Thick	1
ITEM	PART NO.	DESCRIPTION	QTY
15	Z12322	Cotter Pin 3/16 X 2	1

**Label Layout**



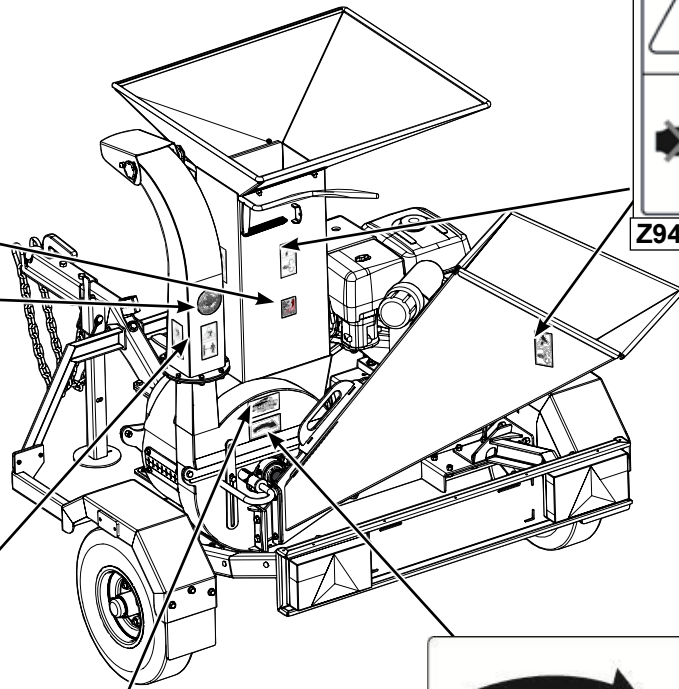
Z94617 x 1



Z94163 x 1



Z94120 x 6



Z94205 x 1



Z94117 x 5



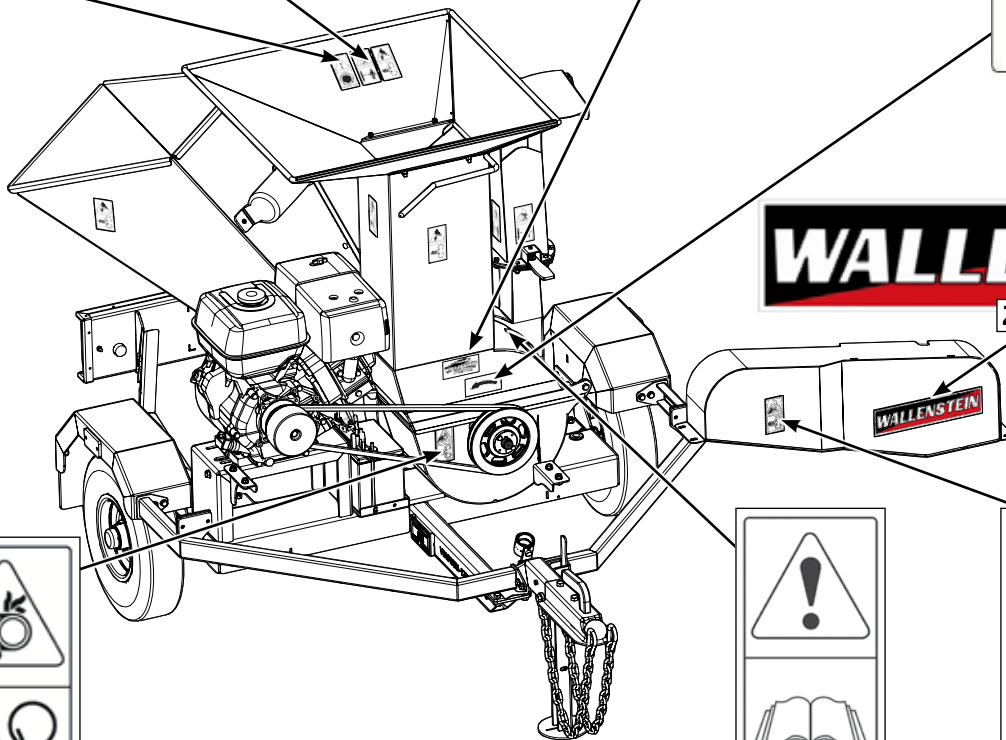
Z94063 x 2



Z94144 x 1



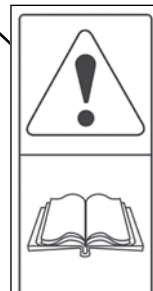
Z94145 x 1



Z94056 x 1



Z94127 x 1



Z94119 x 1

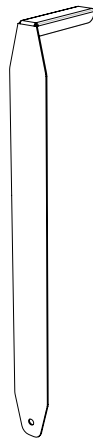


Z94116 x 1

REMEMBER - If safety signs have been damaged, removed, become illegible or parts replaced without safety signs, new signs must be applied. New safety signs are available from your authorized dealer.

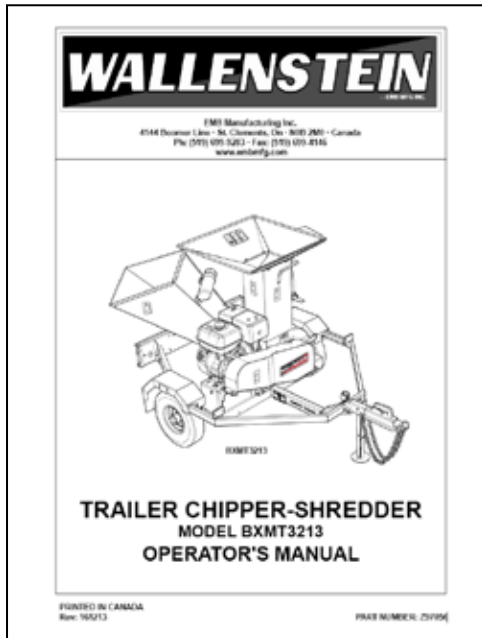
**Accessories**

#1012L269



**#1012L269 LEDGER CLEARANCE  
SETTING GAUGE**

For **BXMT3213**  
An easy and accurate way of setting the critical clearances between the ledger blade and the rotor chipper blade.



**#Z97056 BXMT  
TRAILER SHREDDER / CHIPPER  
OPERATOR'S MANUAL**

Available as a download at  
[www.embmfg.com](http://www.embmfg.com)