

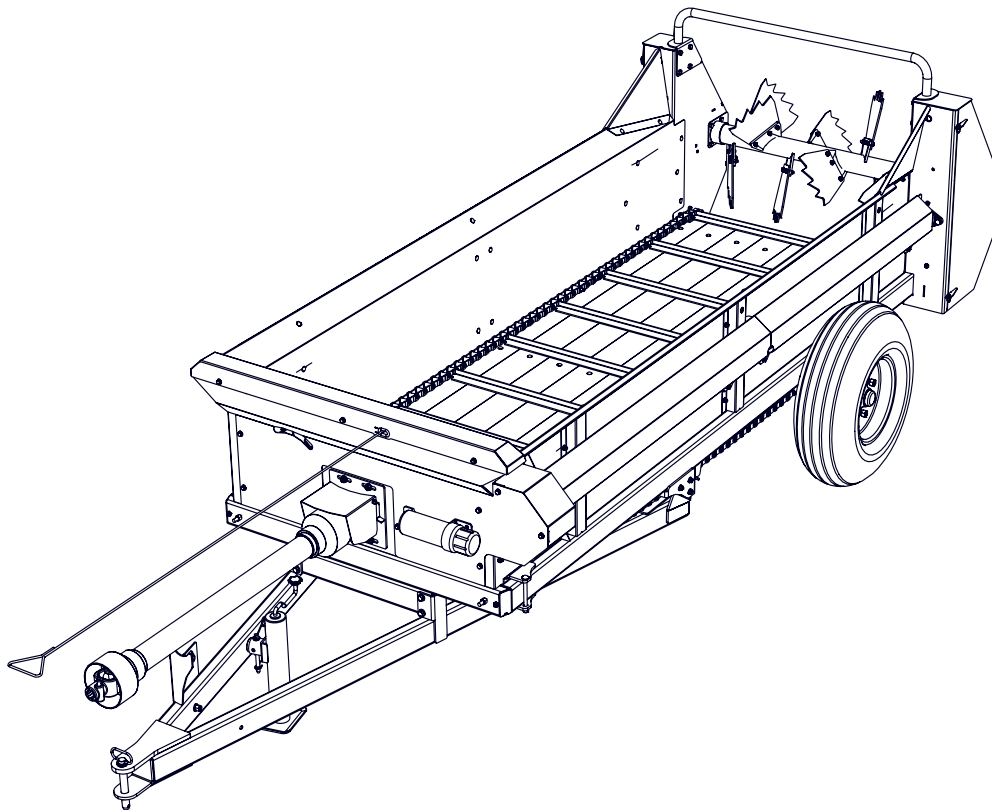


EMB Manufacturing Inc.
4144 Boomer Line · St. Clements, On · N0B 2M0 · Canada
Ph: (519) 699-9283 · Fax: (519) 699-4146
www.embmfg.com

MX130 / MX130T Manure Spreader

Parts Manual

Starting with S/N's
7130P002



Refer to the operators
manual for safe
operation and
maintenance

MX130.130T Rev A.Parts Book .101015
Rev # 220217

Foreword

EMB Mfg. has prepared this parts manual to assist customers in ordering quality OEM replacement parts.

Proper and regular service and replacing old, worn or broken parts with the correct OEM parts are essential to prolonging the life of your EMB product. Please refer to this manual before ordering any replacement parts.

All information contained in this parts manual is based on the latest product specification available at the time of printing this manual. If your product differs from the specifications contained within this manual contact EMB Mfg. for information.

EMB reserves the right to alter specifications on their products at any time.

Reproduction of this parts manual of any kind is prohibited without prior written permission from EMB Mfg.

For parts and information please contact your dealer. If your dealer is no longer available please go to our website: <http://www.embmfg.com> and click on "FIND A DEALER NEAR YOU" for information on a local dealer.

Table of Contents Page

Bolt Torque.....	4
Wheel Lug Torque	5
Tongue Assembly	6
Main frame Assembly - Front	7
Main frame Assembly - Rear.....	8
MX130 Axle / Hub Assembly.....	9
MX130T Axle / Hub Assembly	9
Floor / Chain Apron Assembly	10
Input Shaft Assembly.....	11
Beater Drive - Front Assembly	12
Engagement Ratchet Assembly	13
Beater Bar Assembly	14
Beater Drive - Rear Assembly	15
Rear Apron - Drive Assembly	16
Apron Drive - Chain Tensioner Assembly	17
Front Shield Assembly	17
Front Box & Apron Flap Assembly	18
Main Box Panel Assembly	19
Rope Routing - Engagement Lever	20
Cable Routing - Beater Gearbox.....	20
Label Layout.....	21
Accessories.....	22
Accessories.....	23

Maintenance should be performed by
trained personnel only.



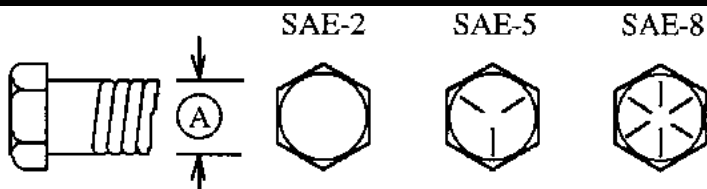
Refer to the operators
manual for safe
operation and
maintenance

Bolt Torque

CHECKING BOLT TORQUE

The tables shown below give correct torque values for various bolts and capscrews. Tighten all bolts to the torques specified in chart unless otherwise noted. Check tightness of bolts periodically, using bolt torque chart as a guide. Replace hardware with the same strength bolt.

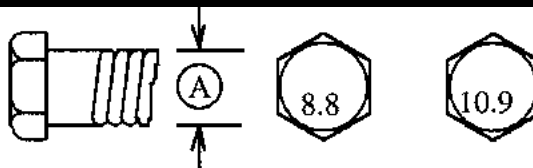
ENGLISH TORQUE SPECIFICATIONS						
Bolt Diameter "A"	Bolt Torque*					
	SAE 2 (N.m) (lb-ft)		SAE 5 (N.m) (lb-ft)		SAE 8 (N.m) (lb-ft)	
1/4"	8	6	12	9	17	12
5/16"	13	10	25	19	36	27
3/8"	27	20	45	33	63	45
7/16"	41	30	72	53	100	75
1/2"	61	45	110	80	155	115
9/16"	95	60	155	115	220	165
5/8"	128	95	215	160	305	220
3/4"	225	165	390	290	540	400
7/8"	230	170	570	420	880	650
1"	345	225	850	630	1320	970



Torque figures indicated above are valid for non-greased or non-oiled threads and heads unless otherwise specified. Therefore, do not grease or oil bolts or capscrews unless otherwise specified in this manual. When using locking elements, increase torque values by 5%.

* Torque value for bolts and capscrews are identified by their head markings.

METRIC TORQUE SPECIFICATIONS				
Bolt Diameter "A"	Bolt Torque*			
	8.8 (N.m) (lb-ft)		10.9 (N.m) (lb-ft)	
M3	0.5	0.4	1.8	1.3
M4	3	2.2	4.5	3.3
M5	6	4	9	7
M6	10	7	15	11
M8	25	18	35	26
M10	50	37	70	52
M12	90	66	125	92
M14	140	103	200	148
M16	225	166	310	229
M20	435	321	610	450
M24	750	553	1050	774
M30	1495	1103	2100	1550
M36	2600	1917	3675	2710



Wheel Lug Torque

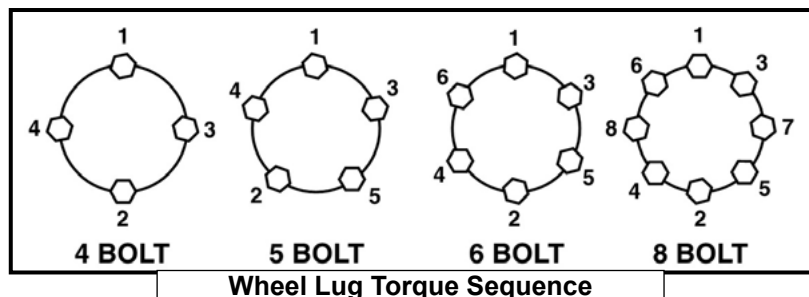
It is extremely important safety procedure to apply and maintain proper wheel mounting torque on your trailer axle. Torque wrenches are the best method to assure the proper amount of torque is being applied to a fastener.

Wheel lugs should be torqued before first road use and after each wheel removal. Check and re torque after the first 16Km (10 miles), 40Km (25 miles), and again at 80Km (50 miles). Check periodically thereafter.

Note: Wheel lugs must be applied and maintained at the proper torque levels to prevent loose wheels, broken studs, and possible dangerous separation of wheels from your axle.

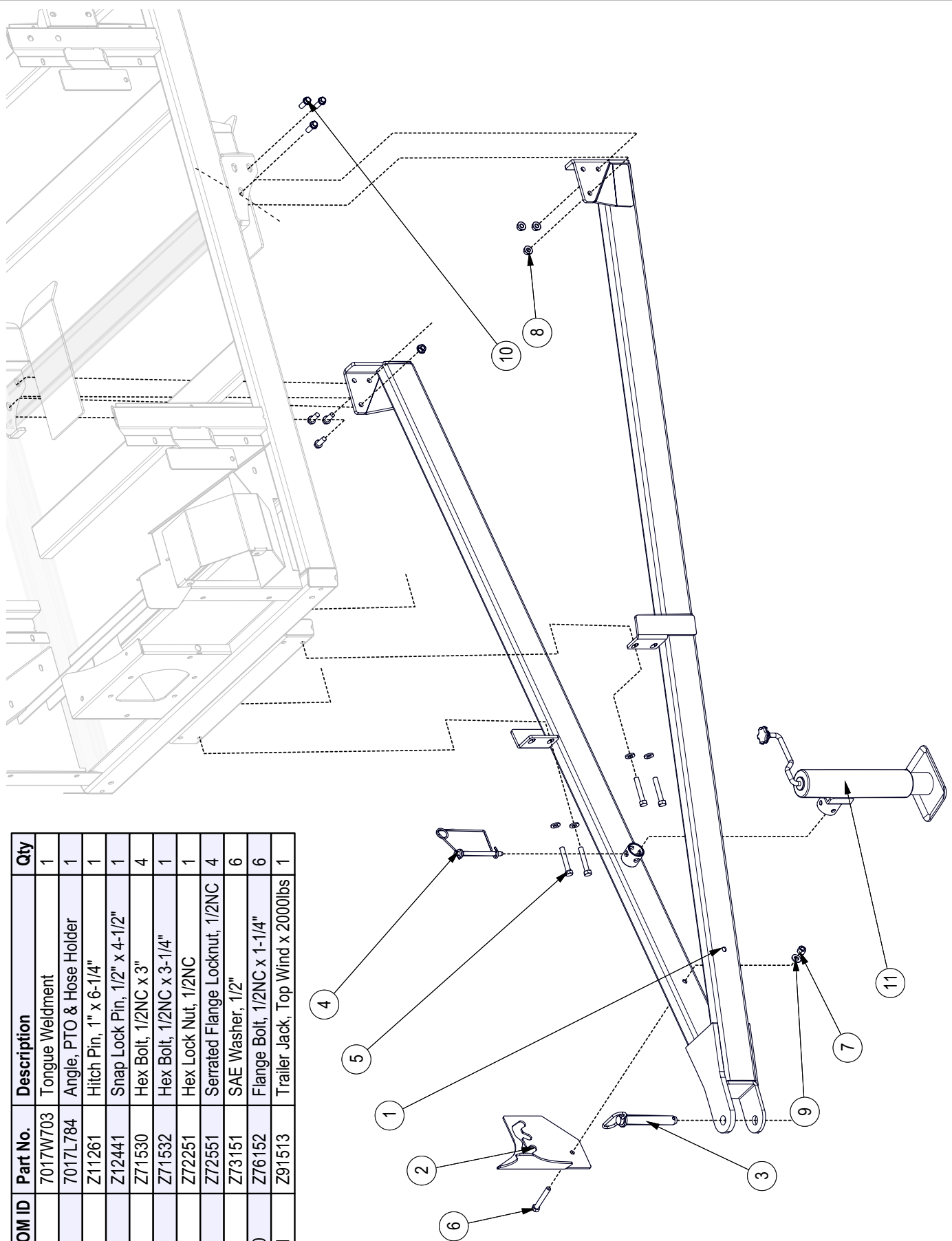
- Start all lugs by hand to prevent cross threading.
- Tighten lugs in sequence, per wheel lug torque sequence chart.
- The tightening of the fasteners should be done in stages. Following the recommended sequence, tighten fasteners per wheel torque requirements chart.

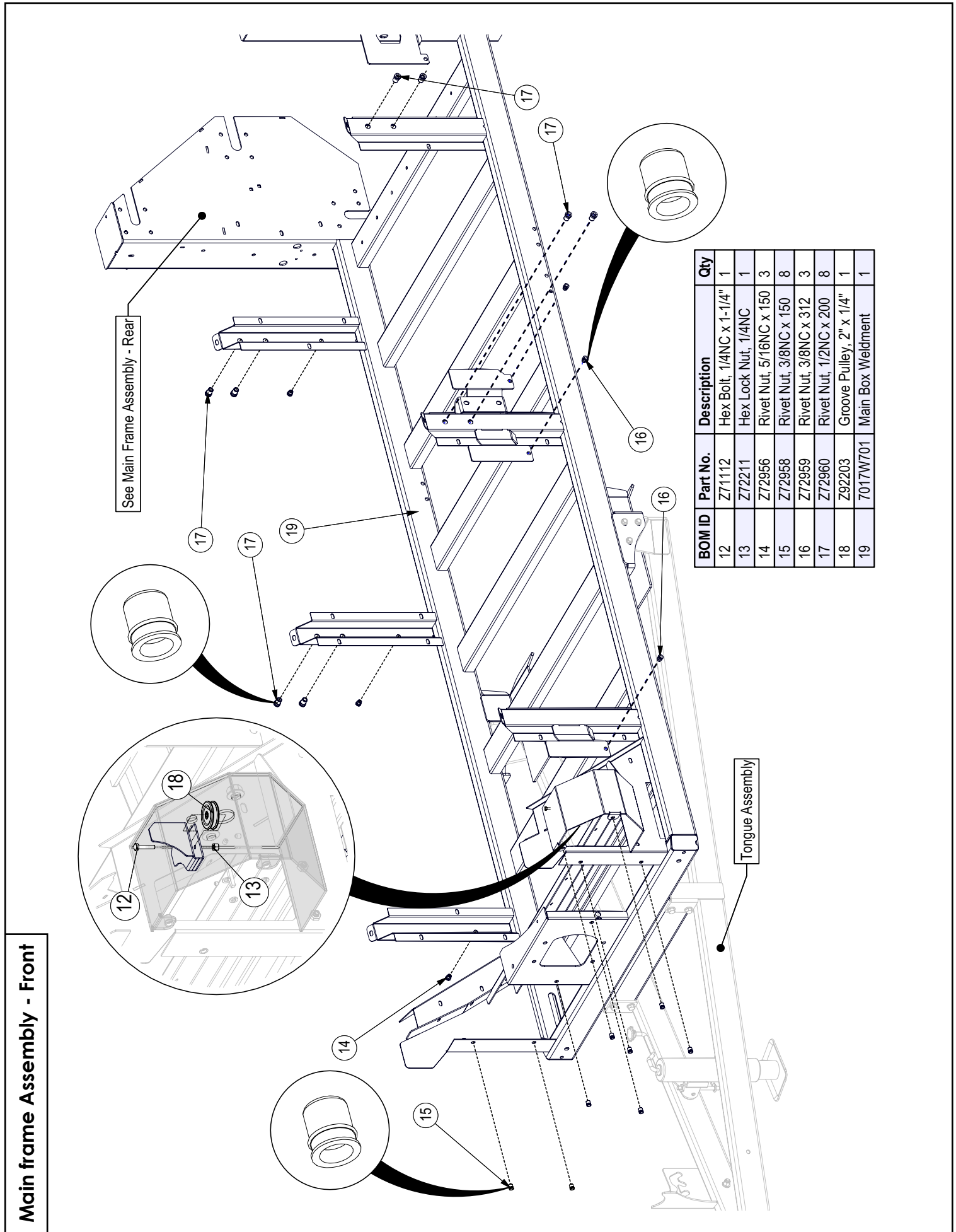
Wheel Torque Requirements				
Wheel Size	Torque Unit	1st Stage	2nd Stage	3rd Stage
8"	ft-lbs	12 - 20	30 - 35	45 - 55
	Nm	16 - 26	39 - 45.5	58.5 - 71.5
12"	ft-lbs	20 - 25	35 - 40	50 - 60
	Nm	26 - 32.5	45.5 - 52	65 - 78
13"	ft-lbs	20 - 25	35 - 40	50 - 60
	Nm	26 - 32.5	45.5 - 52	65 - 78
14"	ft-lbs	20 - 25	50 - 60	90 - 120
	Nm	26 - 32.5	65 - 78	117 - 156
15"	ft-lbs	20 - 25	50 - 60	90 - 120
	Nm	26 - 32.5	65 - 78	117 - 156
16"	ft-lbs	20 - 25	50 - 60	90 - 120
	Nm	26 - 32.5	65 - 78	117 - 156



Tongue Assembly

BOM ID	Part No.	Description	Qty
1	7017W703	Tongue Weldment	1
2	7017L784	Angle, PTO & Hose Holder	1
3	Z11261	Hitch Pin, 1" x 6-1/4"	1
4	Z12441	Snap Lock Pin, 1/2" x 4-1/2"	1
5	Z71530	Hex Bolt, 1/2NC x 3"	4
6	Z71532	Hex Bolt, 1/2NC x 3-1/4"	1
7	Z72251	Hex Lock Nut, 1/2NC	1
8	Z72551	Serrated Flange Locknut, 1/2NC	4
9	Z73151	SAE Washer, 1/2"	6
10	Z76152	Flange Bolt, 1/2NC x 1-1/4"	6
11	Z91513	Trailer Jack, Top Wind x 2000lbs	1



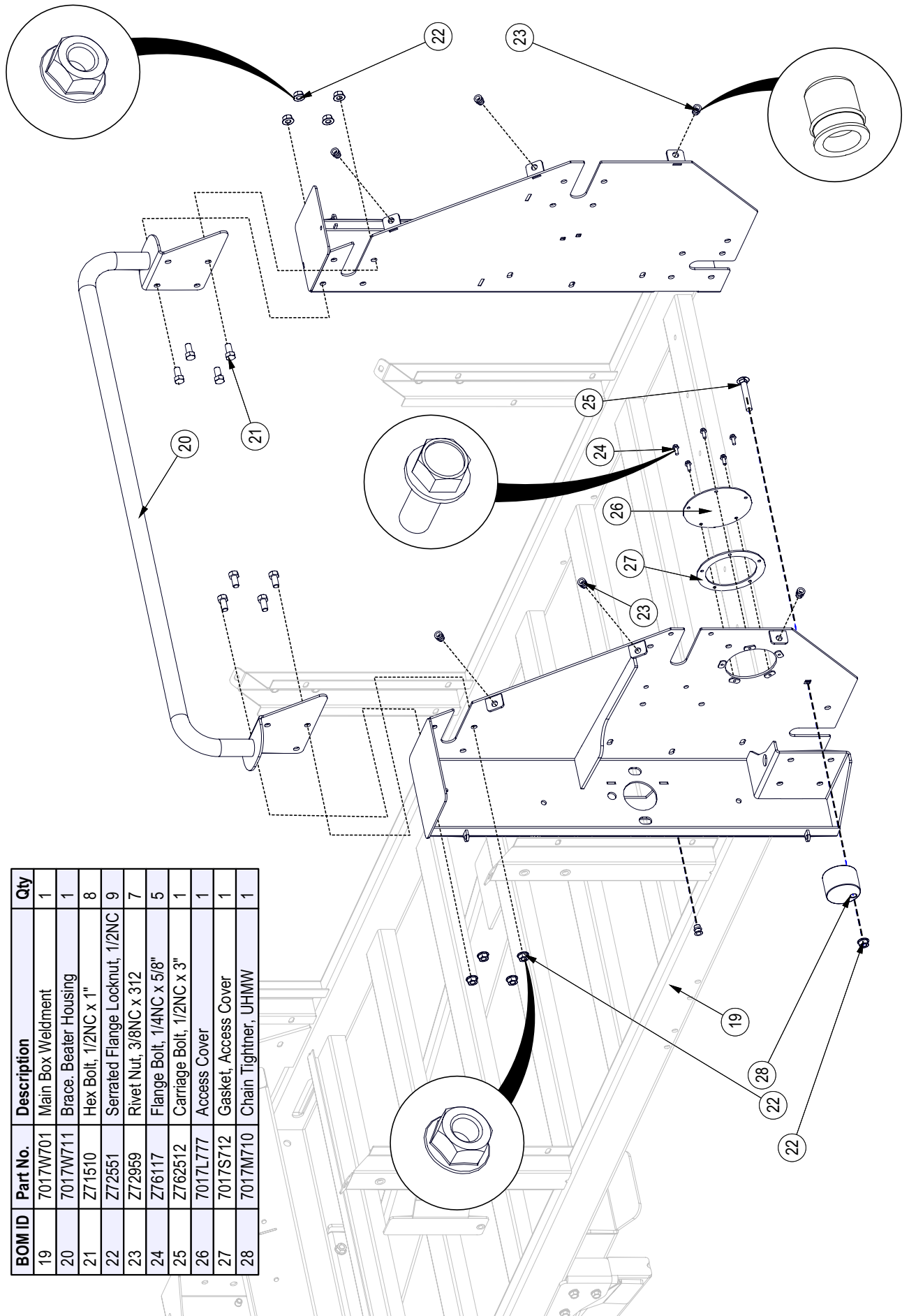


BOM ID	Part No.	Description	Qty
12	Z71112	Hex Bolt, 1/4NC x 1-1/4"	1
13	Z72211	Hex Lock Nut, 1/4NC	1
14	Z72956	Rivet Nut, 5/16NC x 150	3
15	Z72958	Rivet Nut, 3/8NC x 150	8
16	Z72959	Rivet Nut, 3/8NC x 312	3
17	Z72960	Rivet Nut, 1/2NC x 200	8
18	Z92203	Groove Pulley, 2" x 1/4"	1
19	7017W701	Main Box Weldment	1

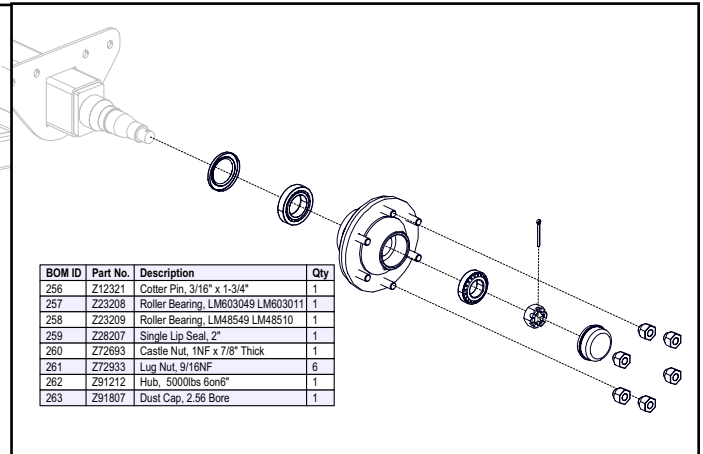
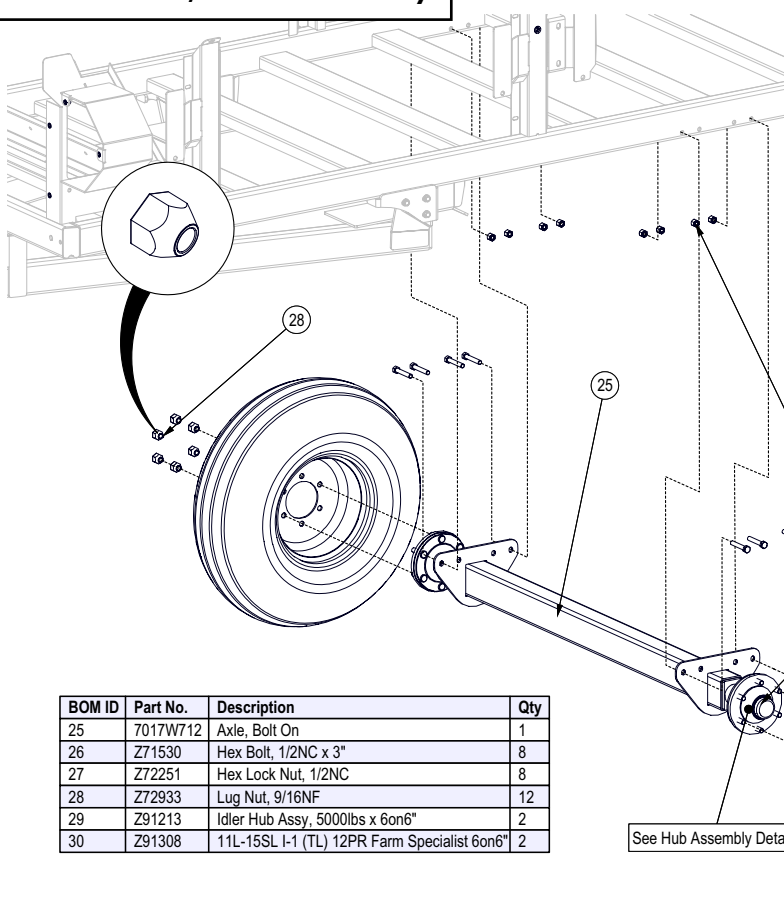
Main frame Assembly - Front

Main frame Assembly - Rear

BOM ID	Part No.	Description	Qty
19	7017W701	Main Box Weldment	1
20	7017W711	Brace, Beater Housing	1
21	Z71510	Hex Bolt, 1/2NC x 4"	8
22	Z72551	Serrated Flange Locknut, 1/2NC	9
23	Z72959	Rivet Nut, 3/8NC x 312	7
24	Z76117	Flange Bolt, 1/4NC x 5/8"	5
25	Z762512	Carriage Bolt, 1/2NC x 3"	1
26	7017L777	Access Cover	1
27	7017S712	Gasket, Access Cover	1
28	7017M710	Chain Tightner, UJMW	1



MX130 Axle / Hub Assembly

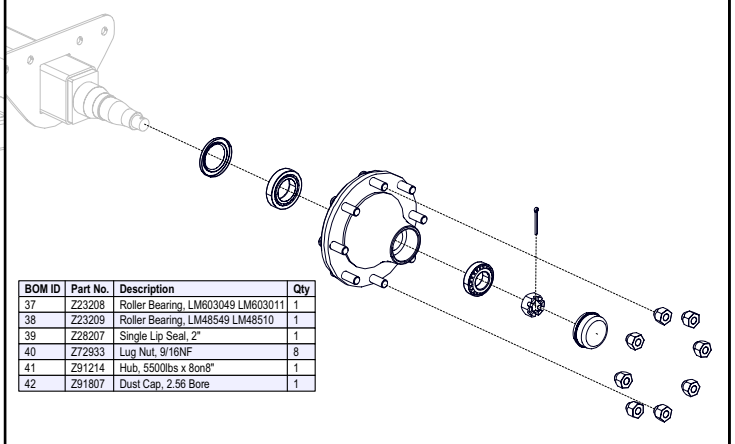
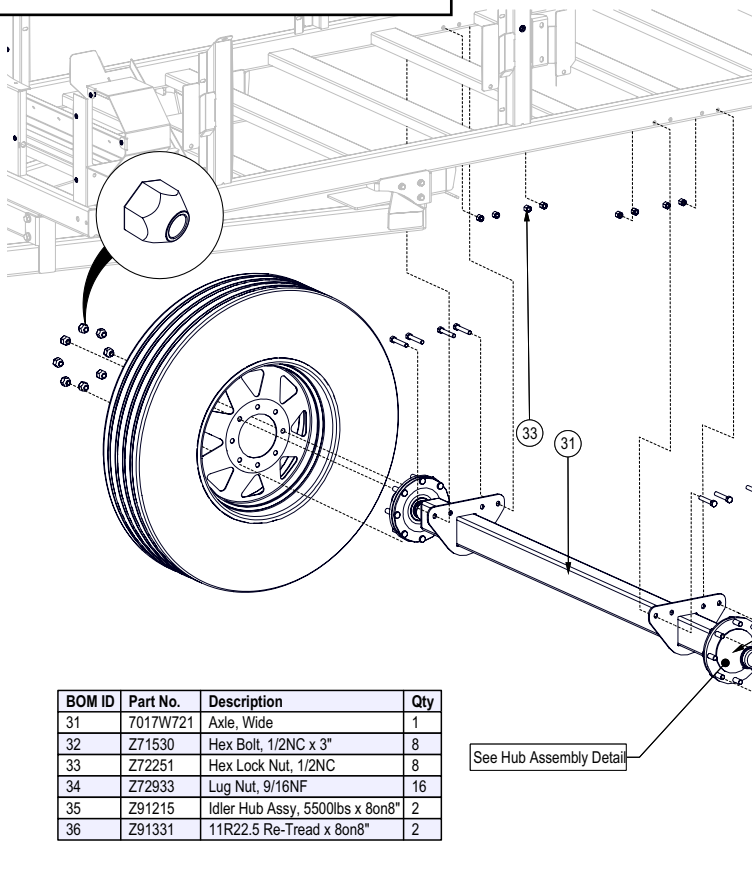


BOM ID	Part No.	Description	Qty
256	Z12321	Collar Pin, 3/16" x 1-3/4"	1
257	Z23208	Roller Bearing, LM603049 LM603011	1
258	Z23209	Roller Bearing, LM48549 LM48510	1
259	Z28207	Single Lip Seal, 2"	1
260	Z72693	Castle Nut, 1NF x 7/8" Thick	1
261	Z72933	Lug Nut, 9/16NF	6
262	Z91212	Hub, 5000lbs 6on6"	1
263	Z91807	Dust Cap, 2.56 Bore	1

BOM ID	Part No.	Description	Qty
25	7017W712	Axle, Bolt On	1
26	Z71530	Hex Bolt, 1/2NC x 3"	8
27	Z72251	Hex Lock Nut, 1/2NC	8
28	Z72933	Lug Nut, 9/16NF	12
29	Z91213	Idler Hub Assy, 5000lbs x 6on6"	2
30	Z91308	11L-15SL I-1 (TL) 12PR Farm Specialist 6on6"	2

See Hub Assembly Detail

MX130T Axle / Hub Assembly

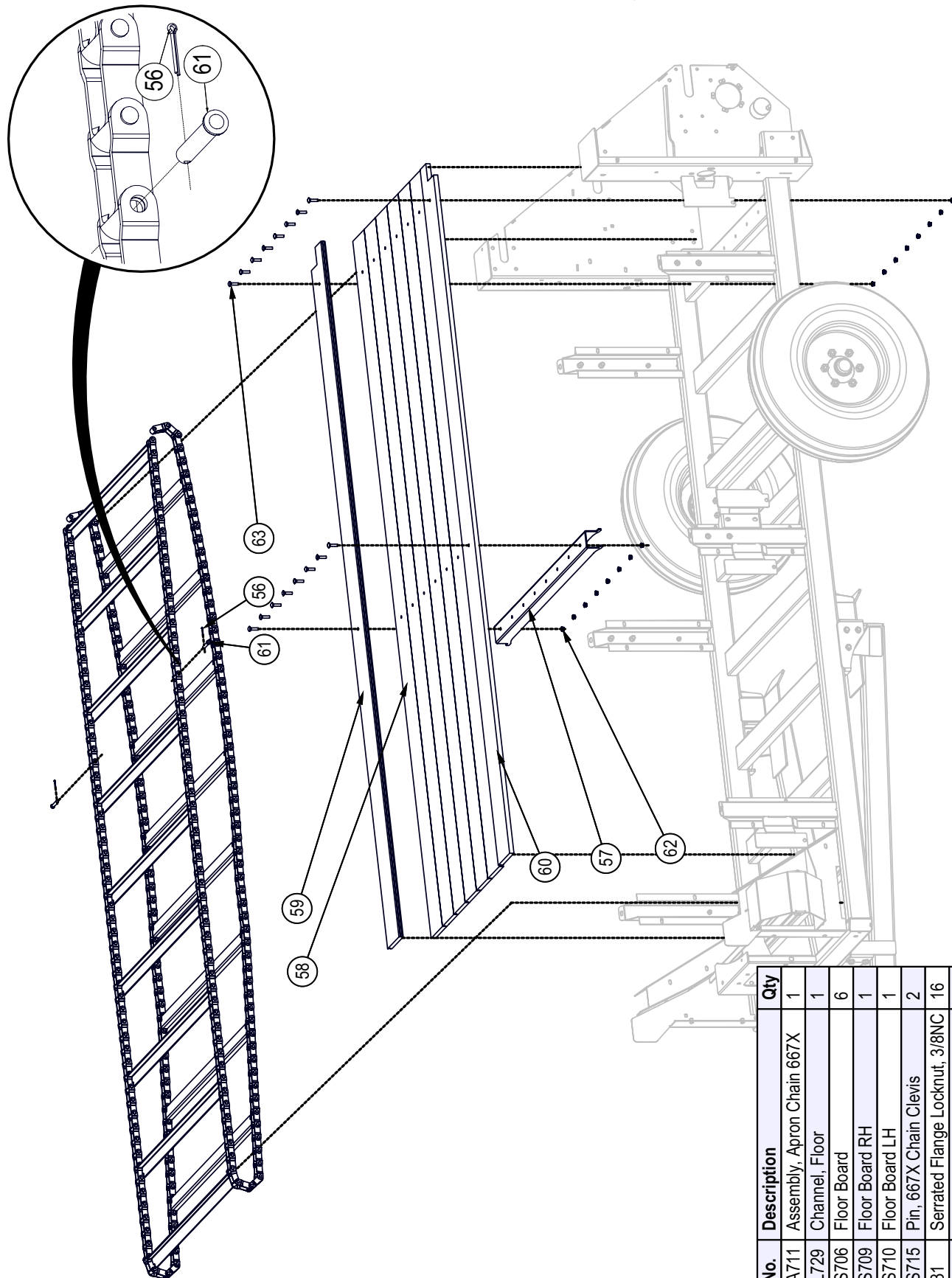


BOM ID	Part No.	Description	Qty
37	Z23208	Roller Bearing, LM603049 LM603011	1
38	Z23209	Roller Bearing, LM48549 LM48510	1
39	Z28207	Single Lip Seal, 2"	1
40	Z72933	Lug Nut, 9/16NF	8
41	Z91214	Hub, 5500lbs x 8on8"	1
42	Z91807	Dust Cap, 2.56 Bore	1

BOM ID	Part No.	Description	Qty
31	7017W721	Axle, Wide	1
32	Z71530	Hex Bolt, 1/2NC x 3"	8
33	Z72251	Hex Lock Nut, 1/2NC	8
34	Z72933	Lug Nut, 9/16NF	16
35	Z91215	Idler Hub Assy, 5500lbs x 8on8"	2
36	Z91331	11R22.5 Re-Tread x 8on8"	2

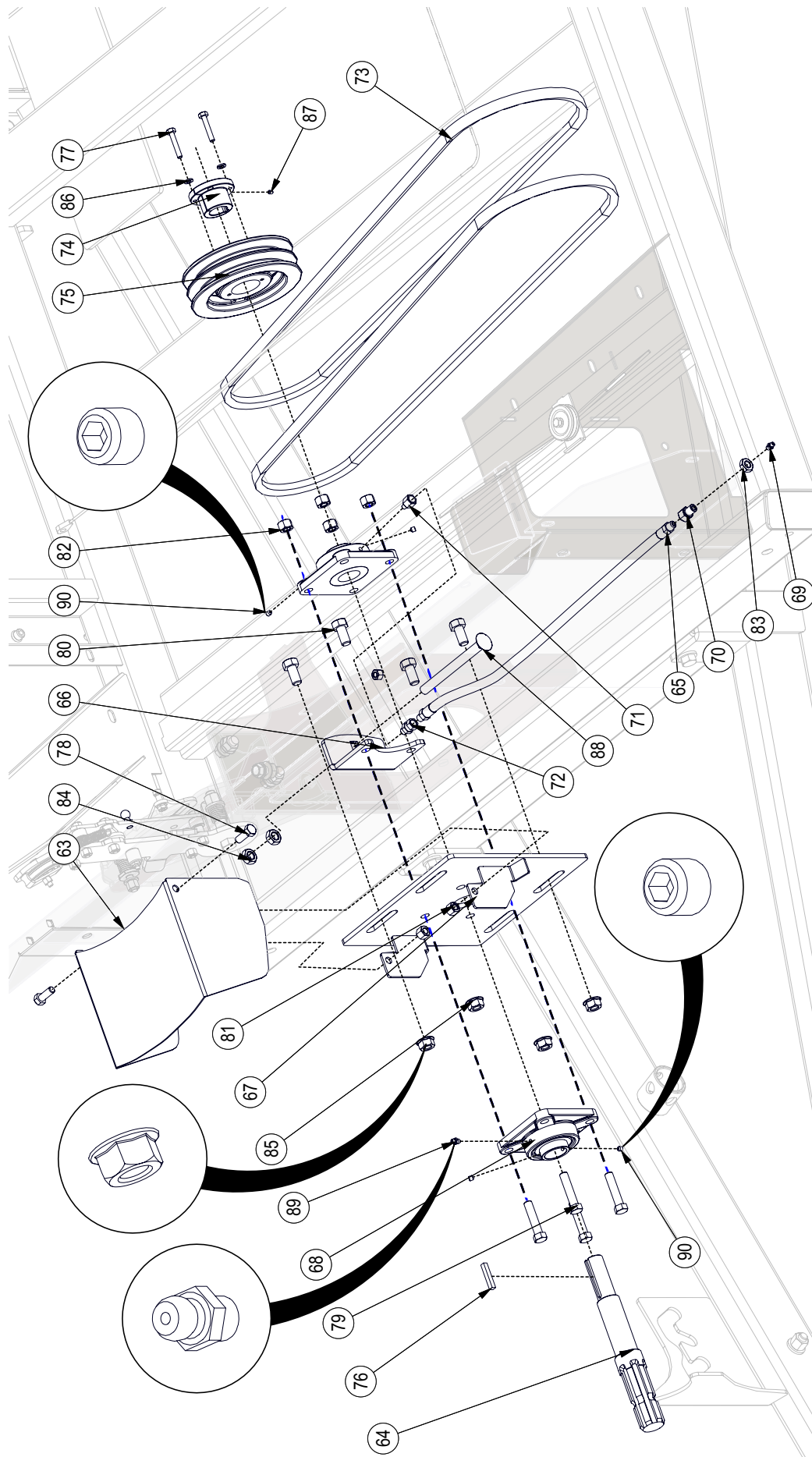
See Hub Assembly Detail

Floor / Chain Apron Assembly



BOM ID	Part No.	Description	Qty
56	7017A711	Assembly, Apron Chain 667X	1
57	7017L729	Channel, Floor	1
58	7017S706	Floor Board	6
59	7017S709	Floor Board RH	1
60	7017S710	Floor Board LH	1
61	7017S715	Pin, 667X Chain Clevis	2
62	Z72531	Serrated Flange Locknut, 3/8NC	16
63	Z76234	Carriage Bolt, 3/8NC x 1-1/2"	16

Input Shaft Assembly

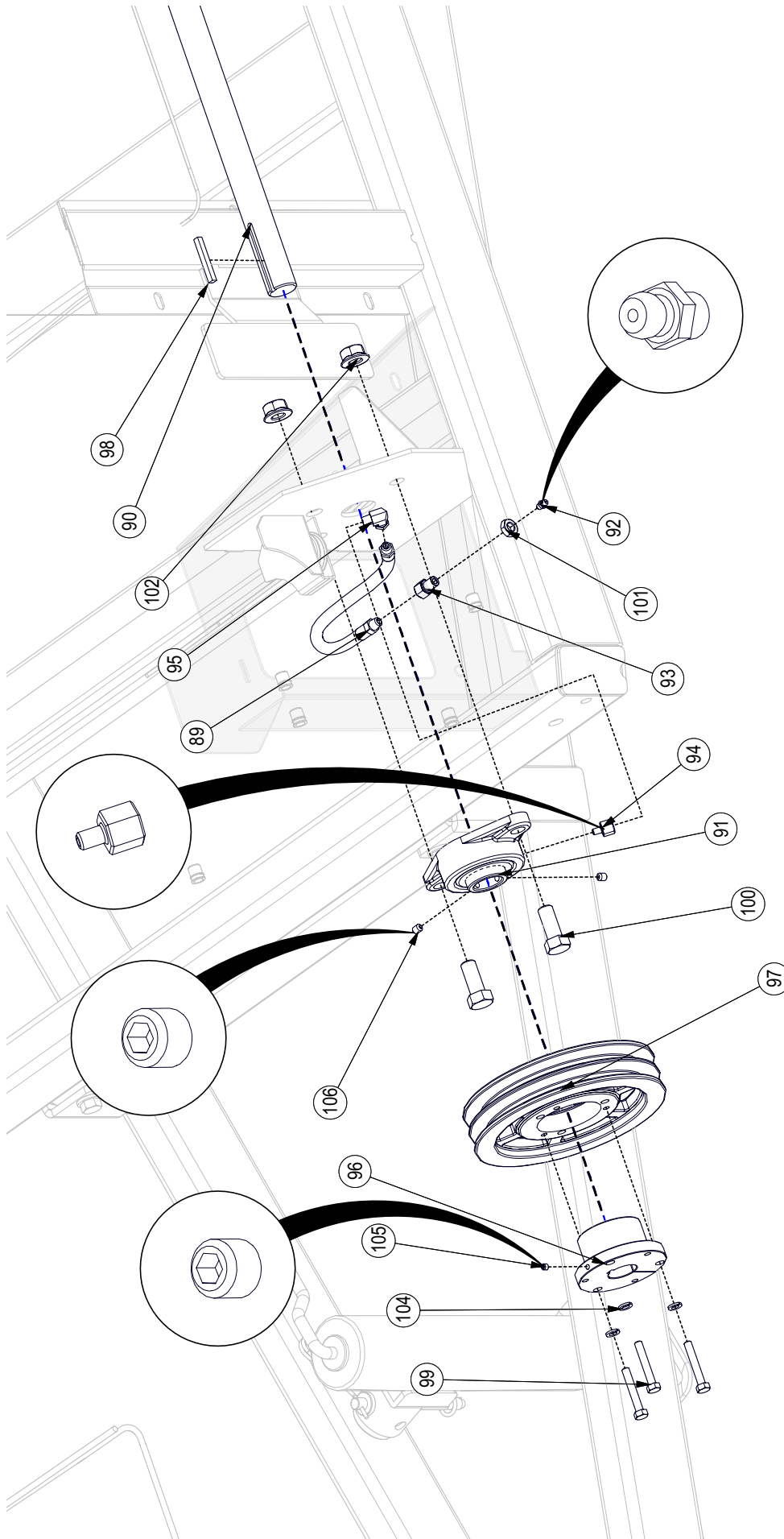


BOM ID	Part No.	Description	Qty
83	Z72341	Jam Nut, 7/16NC	1
84	Z72351	Jam Nut, 1/2NC	2
85	Z72551	Serrated Flange Locknut, 1/2NC	4
86	Z73311	Split Lock Washer, 1/4"	2
87	Z74102	Set Screw, #10NC x 1/4"	1
88	Z76254	Carriage Bolt, 1/2NC x 5-1/2" Full Threads	1
89	Z29202	Grease Fitting, 1/4NF	1
90	Z74112	Set Screw, 1/4NF x 1/4"	3

BOM ID	Part No.	Description	Qty
73	Z41165	Single Belt, B76	2
74	Z41510	Hub, L x 1"	1
75	Z41705	Double Sheave, 2MBL62 x L	1
76	Z46532	Key, 1/4" x 1/4" x 1-1/2"	1
77	Z71115	Hex Bolt, 1/4NC x 1-1/2"	2
78	Z71310	Hex Bolt, 3/8NC x 1"	2
79	Z71420	Hex Bolt, 7/16NC x 2"	4
80	Z71510	Hex Bolt, 1/2NC x 2"	4
81	Z72231	Hex Lock Nut, 3/8NC	2
82	Z72241	Hex Lock Nut, 7/16NC	4

BOM ID	Part No.	Description	Qty
63	7015L541	PTO Cover	1
64	7015M516	PTO Spline	1
65	7017F702	1/4" Grease Whip, MP02 x MP02 x 25"	1
66	7017L723	Bracket, Belt Tightener	1
67	7017W718	PTO Spline Plate	1
68	Z25202	4-Bolt Flange Bearing, UCF206-20	2
69	Z29202	Grease Fitting, 1/4NF	1
70	Z29206	Bulkhead, FP x FP 0402 x 7/16NC	1
71	Z29303	Grease Fitting, FP02 x 1/4NF	1
72	Z29311	Grease Fitting, MP x FPX 0202	1

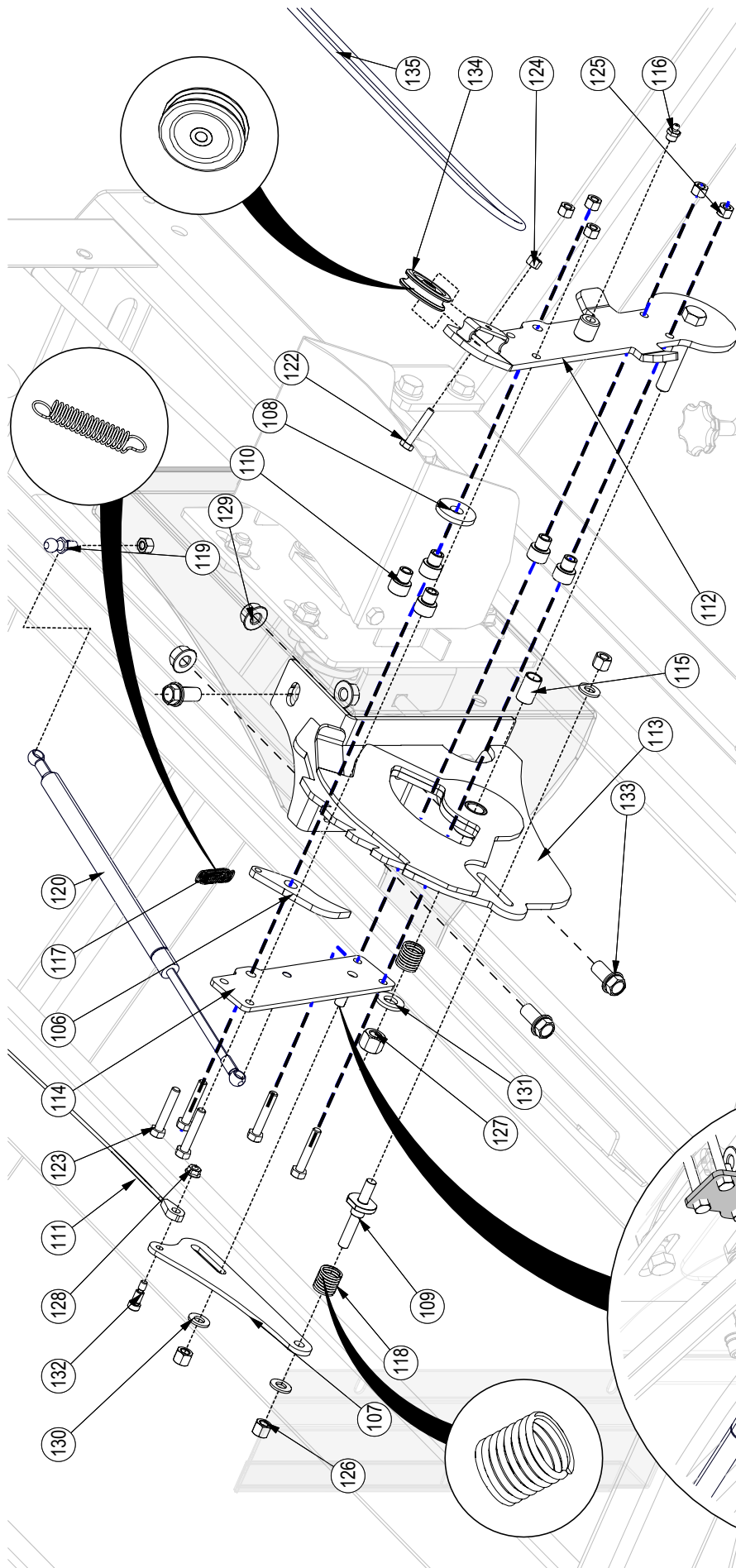
Beater Drive - Front Assembly



BOM ID	Part No.	Description	Qty
98	Z46531	Key, 1/4" x 1/4" x 2"	1
99	Z71220	Hex Bolt, 5/16NC x 2"	3
100	Z71615	Hex Bolt, 5/8NC x 1-1/2"	2
101	Z72341	Jam Nut, 7/16NC	1
102	Z72561	Serrated Flange Locknut, 5/8NC	2
104	Z73321	Split Lock Washer, 5/16"	3
105	Z74111	Set Screw, 1/4NC x 1/4"	1
106	Z74122	Set Screw, 5/16NF x 3/8"	2

BOM ID	Part No.	Description	Qty
89	7017F701	1/4" Grease Whip, MP02 x MP02 x 14"	1
90	7017M705	Line Shaft	1
91	Z25105	2-Bolt Flange Bearing, UCFL207-20	1
92	Z29202	Grease Fitting, 1/4NF	1
93	Z29206	Bulkhead, FP x FP 0402 x 7/16NC	1
94	Z29303	Grease Fitting, FP02 x 1/4NF	1
95	Z29307	Elbow 90 Grease Fitting, MP x FPX 0202	1
96	Z41522	Hub, SK x 1-1/4"	1
97	Z41709	Double Sheave, 2B80 x SK	1

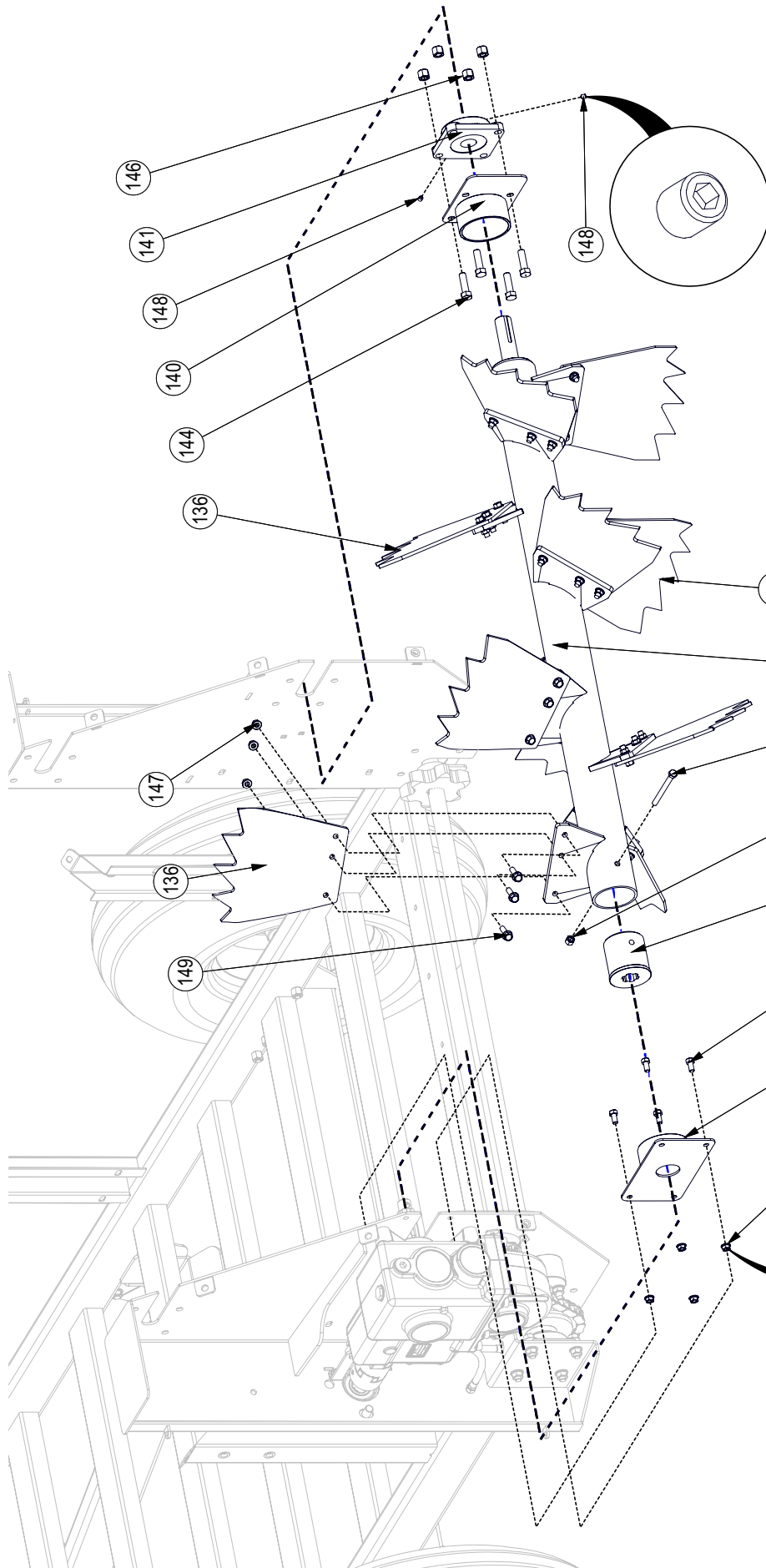
Engagement Ratchet Assembly



BOM ID	Part No.	Description	Qty
122	Z71115	Hex Bolt, 1/4NC x 1-1/2"	1
123	Z71217	Hex Bolt, 5/16NC x 1-3/4"	5
124	Z72211	Hex Lock Nut, 1/4NC	2
125	Z72221	Hex Lock Nut, 5/16NC	6
126	Z72231	Hex Lock Nut, 3/8NC	3
127	Z72251	Hex Lock Nut, 1/2NC	1
128	Z72511	Serrated Flange Locknut, 1/4NC	1
129	Z72561	Serrated Flange Locknut, 1/2NC	3
130	Z73131	SAE Washer, 3/8"	3
131	Z73151	SAE Washer, 1/2"	1
132	Z75522	Shoulder Bolt, 5/16" x 1/2"	1
133	Z76163	Flange Bolt, 1/2NC x 1"	3
134	Z92203	Groove Pulley, 2" x 1/4"	2
135	Z92207	Green Nylon Rope, 1/4" x 15ft	1

BOM ID	Part No.	Description	Qty
106	7017L726	Dog	1
107	7017L782	Plate, Clutch Wire Catch	1
108	7017L787	Washer, Dog	1
109	7017M714	Post Stop Stud 3/8, Adjustable	1
110	7017M717	Spacer, Dog Tension	5
111	7017S713	Wire Cable, 1/8" Shifting	1
112	7017W708	Engagement Lever	1
113	7017W719	Weldment, Engagement Ratchet	1
114	7017W720	Weldment, Gas Spring Plate	1
115	Z27103	Fiberglass Bearing, 1/2" ID x 1" long x 1/16" wall	1
116	Z29201	Grease Fitting, MP02	1
117	Z31201	Ext Spring, 1/2" OD x 1-1/2" x .048"	1
118	Z32302	Comp Spring, 0.845" OD x 1-1/4" x 0.080"	2
119	Z34204	Ball Stud, 13mm x 5/16NC	1
120	Z43211	Gas Spring, 22mm OD x 18.25" x 8" x 100 lbs	1

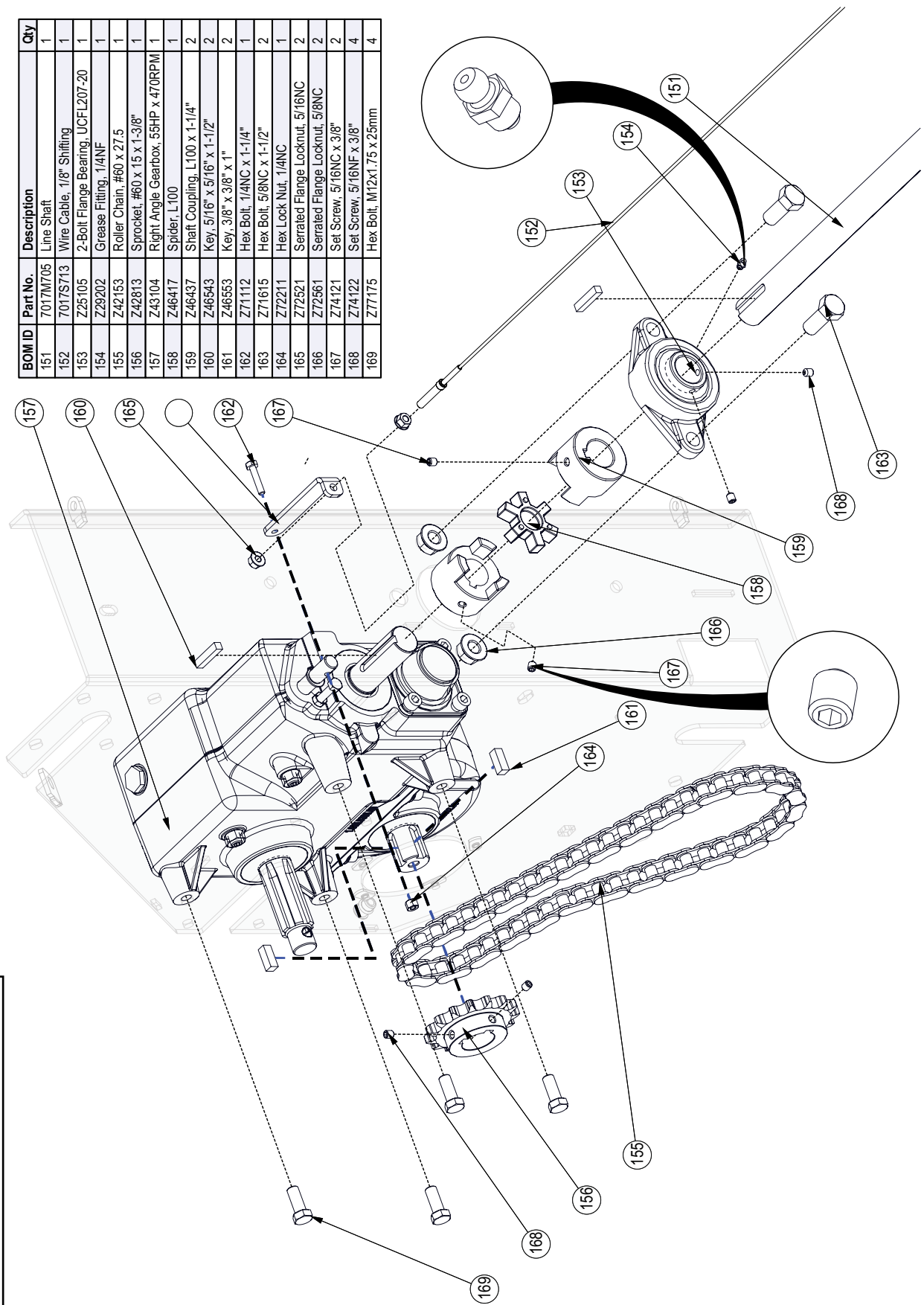
Beater Bar Assembly



BOM ID	Part No.	Description	Qty
136	7017L733	Bottom Beater, Paddle	10
137	7017M702	Coupler, Beater Gear Box	1
138	7017W702	Bottom Beater	1
139	7017W713	Beater Cap	1
140	7017W714	Beater Cap RH	1
141	Z25212	4-Bolt Flange Bearing, UCF207-20R3BO x Triple Seal	1
142	Z71307	Hex Bolt, 3/8NC x 3/4"	4
143	Z71345	Hex Bolt, 3/8NC x 4-1/2"	1
144	Z71517	Hex Bolt, 1/2NC x 1-3/4"	4
145	Z72231	Hex Lock Nut, 3/8NC	1
146	Z72251	Hex Lock Nut, 1/2NC	4
147	Z72531	Serrated Flange Locknut, 3/8NC	34
148	Z74122	Set Screw, 5/16NF x 3/8"	2
149	Z76137	Flange Bolt, 3/8NC x 1-1/4"	30

Beater Drive - Rear Assembly

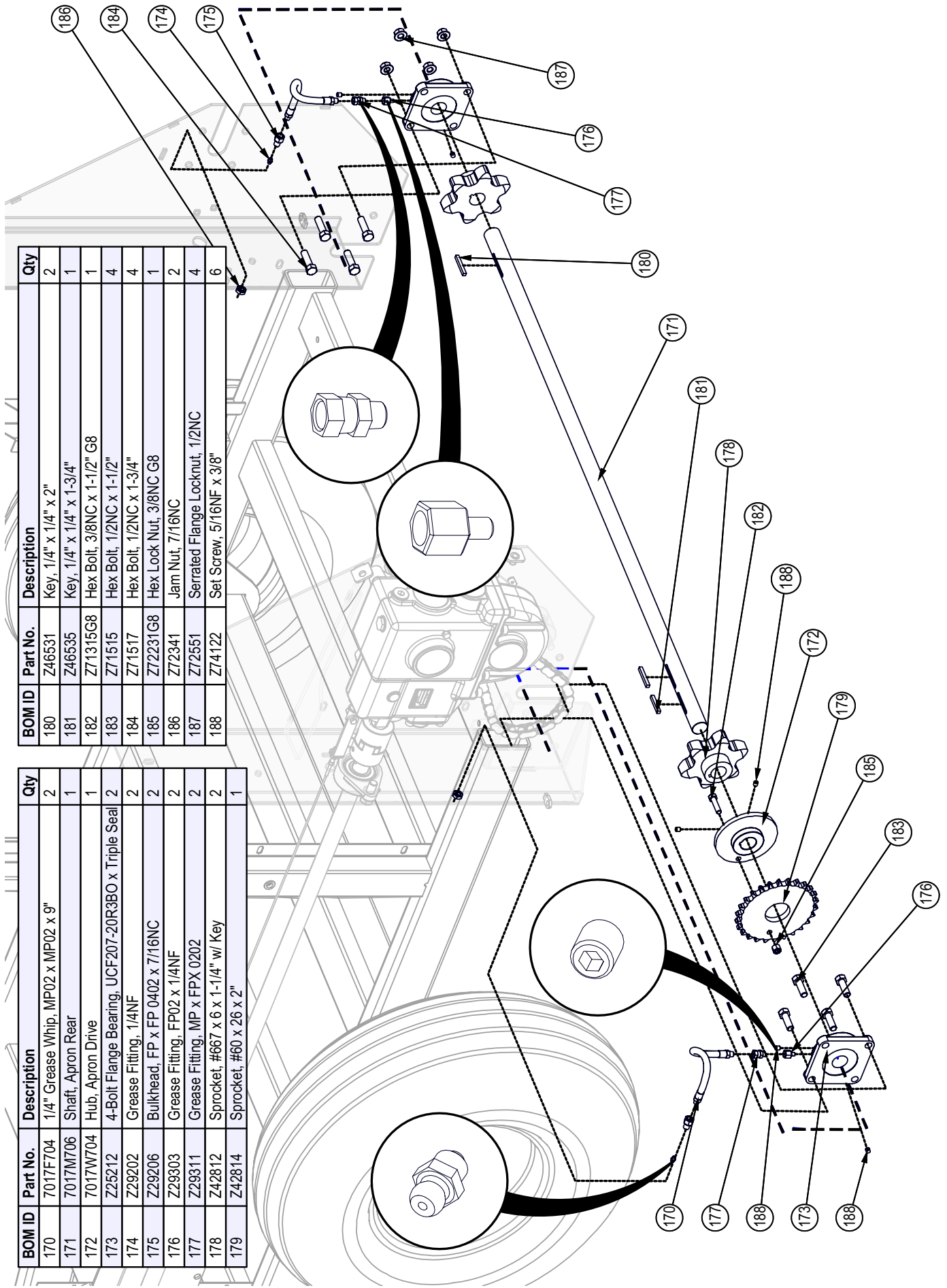
BOM ID	Part No.	Description	Qty
151	Z017M705	Line Shaft	1
152	Z017S713	Wire Cable, 1/8" Shifting	1
153	Z25105	2-Bolt Flange Bearing, UCF L207-20	1
154	Z29202	Grease Fitting, 1/4NF	1
155	Z42163	Roller Chain, #60 x 27.5	1
156	Z42813	Sprocket, #60 x 15 x 1-3/8"	1
157	Z43104	Right Angle Gearbox, 55HP x 470RPM	1
158	Z46417	Spider, L100	1
159	Z46437	Shaft Coupling, L100 x 1-1/4"	2
160	Z46543	Key, 5/16" x 5/16" x 1-1/2"	2
161	Z46553	Key, 3/8" x 3/8" x 1"	2
162	Z71112	Hex Bolt, 1/4NC x 1-1/4"	1
163	Z71615	Hex Bolt, 5/8NC x 1-1/2"	2
164	Z72211	Hex Lock Nut, 1/4NC	1
165	Z72521	Serrated Flange Locknut, 5/16NC	2
166	Z72561	Serrated Flange Locknut, 5/8NC	2
167	Z74121	Set Screw, 5/16NF x 3/8"	2
168	Z74122	Set Screw, 5/16NF x 3/8"	4
169	Z77175	Hex Bolt, M12x1.75 x 25mm	4



Rear Apron - Drive Assembly

BOM ID	Part No.	Description	Qty
170	7017F704	1/4" Grease Whip, MP02 x MP02 x 9"	2
171	7017M706	Shaft, Apron Rear	1
172	7017W704	Hub, Apron Drive	1
173	Z25212	4-Bolt Flange Bearing, UCF207-20R3B0 x Triple Seal	2
174	Z29202	Grease Fitting, 1/4NF	2
175	Z29206	Bulkhead, FP x FP 0402 x 7/16NC	2
176	Z29303	Grease Fitting, FP02 x 1/4NF	2
177	Z29311	Grease Fitting, MP x FPX 0202	2
178	Z42812	Sprocket, #667 x 6 x 1-1/4" w/ Key	2
179	Z42814	Sprocket, #60 x 26 x 2"	1

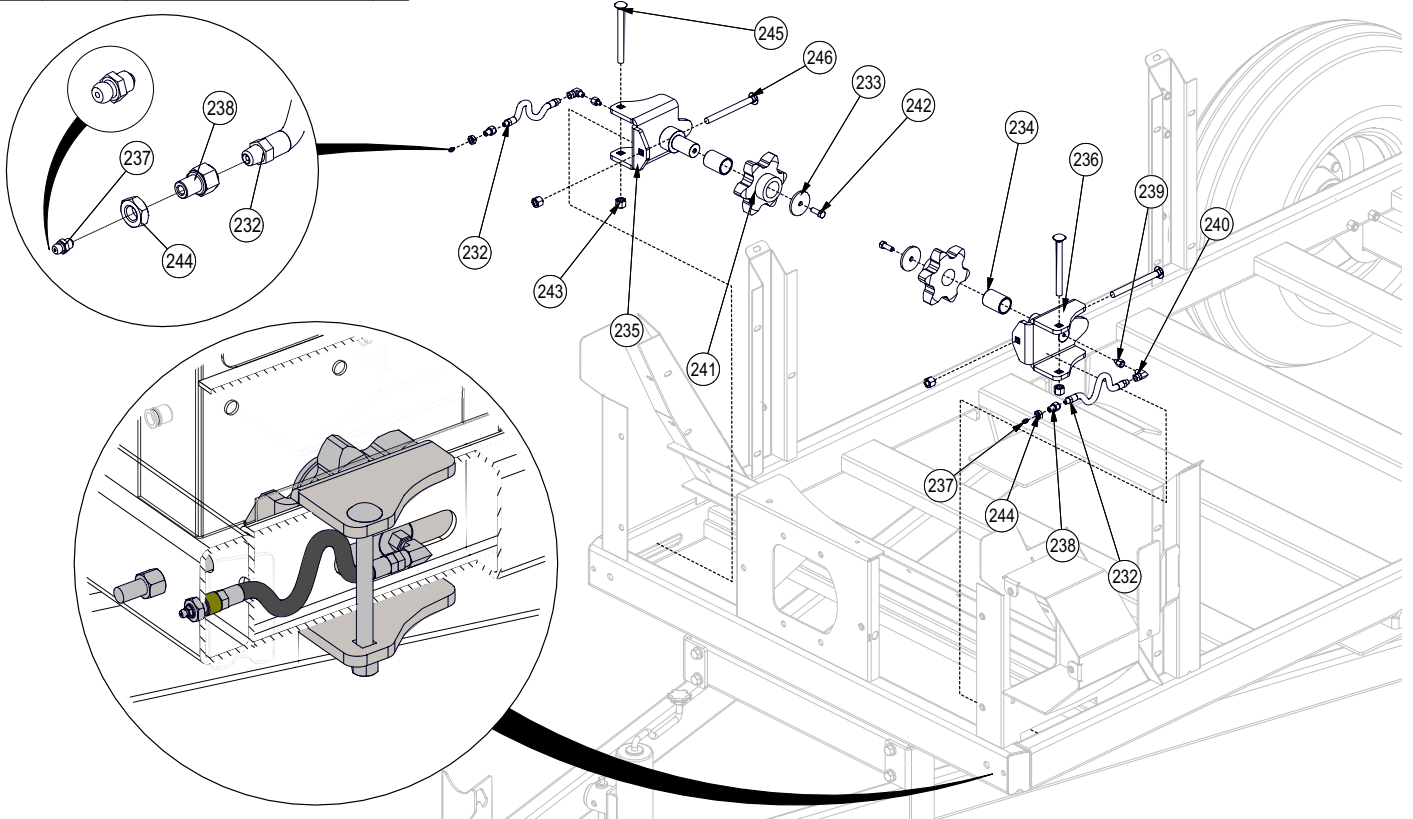
BOM ID	Part No.	Description	Qty
180	Z46531	Key, 1/4" x 1/4" x 2"	2
181	Z46535	Key, 1/4" x 1/4" x 1-3/4"	1
182	Z71315G8	Hex Bolt, 3/8NC x 1-1/2" G8	1
183	Z71515	Hex Bolt, 1/2NC x 1-1/2"	4
184	Z71517	Hex Bolt, 1/2NC x 1-3/4"	4
185	Z72231G8	Hex Lock Nut, 3/8NC G8	1
186	Z72341	Jam Nut, 7/16NC	2
187	Z72551	Serrated Flange Locknut, 1/2NC	4
188	Z74122	Set Screw, 5/16NF x 3/8"	6



Apron Drive - Chain Tensioner Assembly

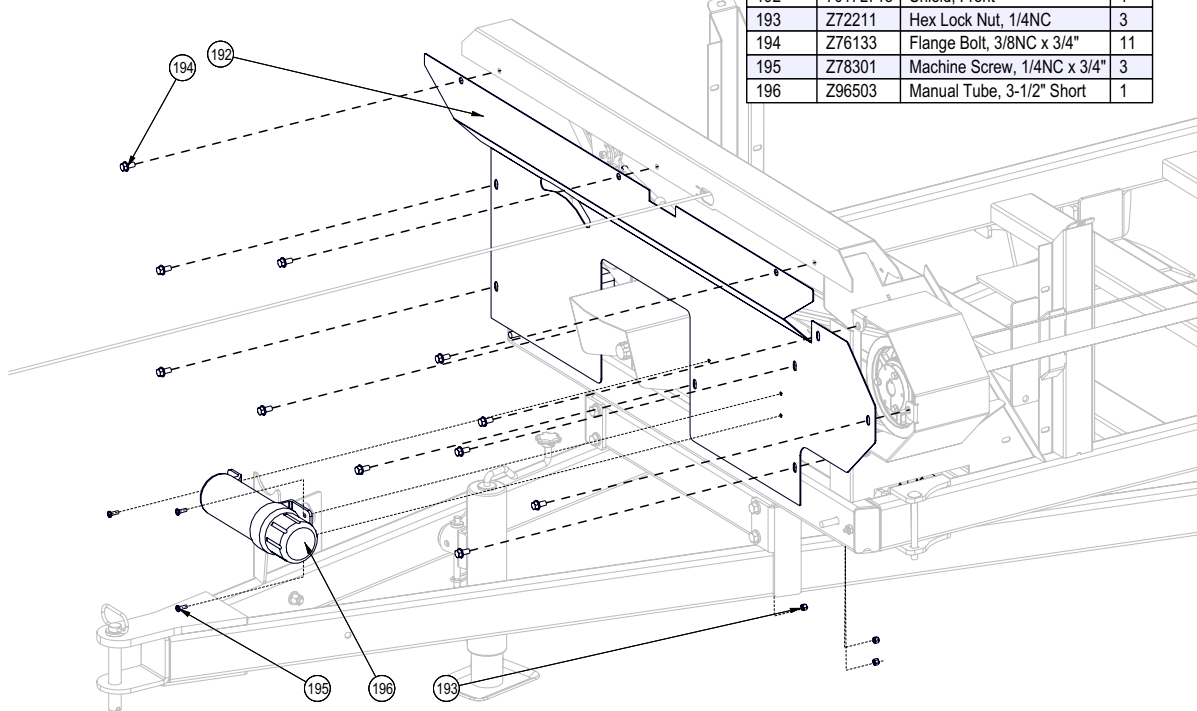
BOM ID	Part No.	Description	Qty
232	7017F703	1/4" Grease Whip, MP02 x MP02 x 7"	2
233	7017L778	Washer, Sprocket Trap	2
234	7017M713	Bushing, 1-1/4 x 1-1/2 x 2	2
235	7017W709	Chain Tightener, Apron Front RH	1
236	7017W709H	Chain Tightener, Apron Front LH	1
237	Z29202	Grease Fitting, 1/4NF	2
238	Z29206	Bulkhead, FP x FP 0402 x 7/16NC	2
239	Z29303	Grease Fitting, FP02 x 1/4NF	2

BOM ID	Part No.	Description	Qty
240	Z29307	Elbow 90 Grease Fitting, MP x FPX 0202	2
241	Z42811	Sprocket, #667 x 6 x 1-1/2"	2
242	Z71310	Hex Bolt, 3/8NC x 1"	2
243	Z72251	Hex Lock Nut, 1/2NC	4
244	Z72341	Jam Nut, 7/16NC	2
245	Z762515	Carriage Bolt, 1/2NC x 5-1/2"	2
246	Z76254	Carriage Bolt, 1/2NC x 5-1/2" Full Threads	2

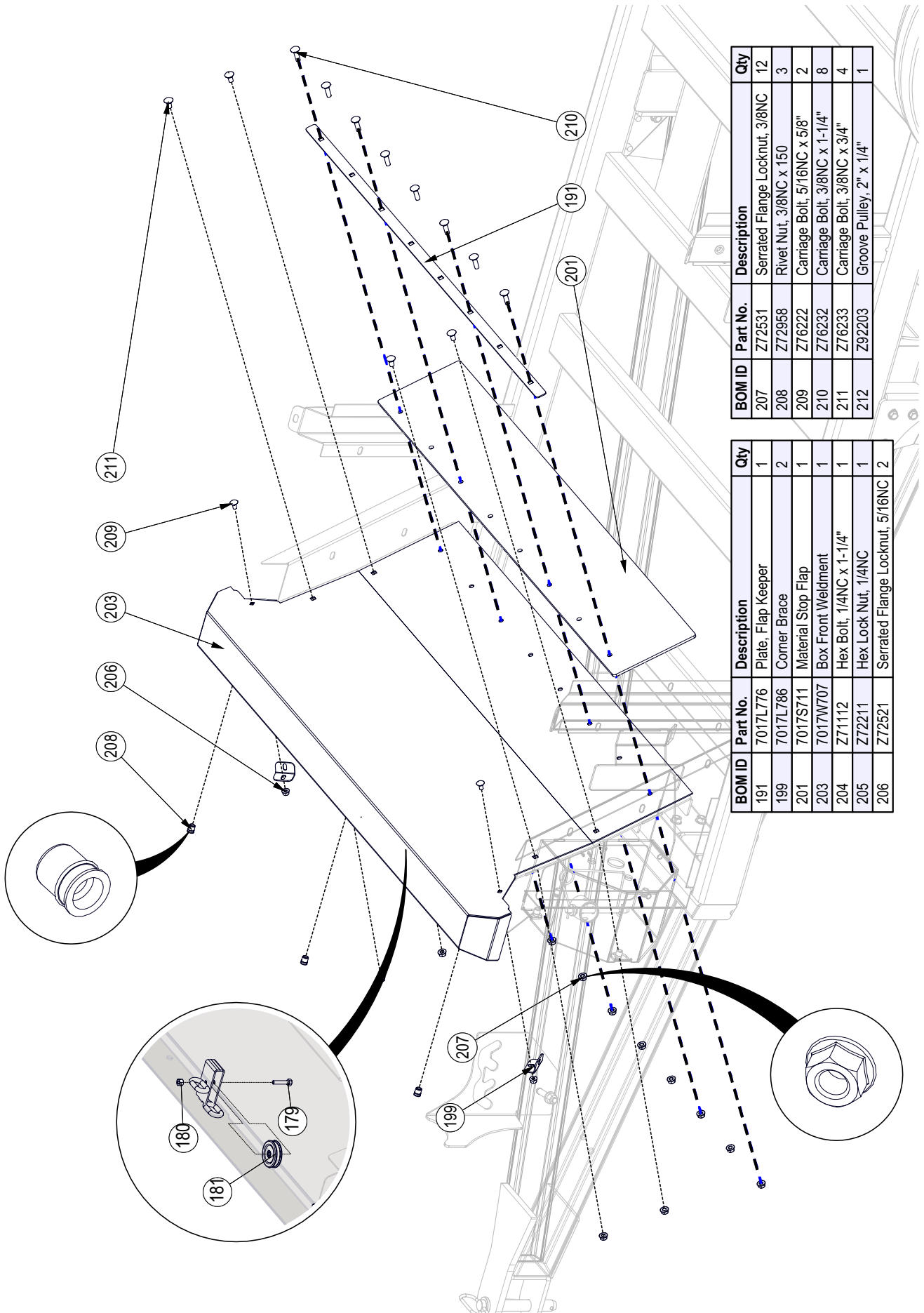


Front Shield Assembly

BOM ID	Part No.	Description	Qty
192	7017L718	Shield, Front	1
193	Z72211	Hex Lock Nut, 1/4NC	3
194	Z76133	Flange Bolt, 3/8NC x 3/4"	11
195	Z78301	Machine Screw, 1/4NC x 3/4"	3
196	Z96503	Manual Tube, 3-1/2" Short	1



Front Box & Apron Flap Assembly

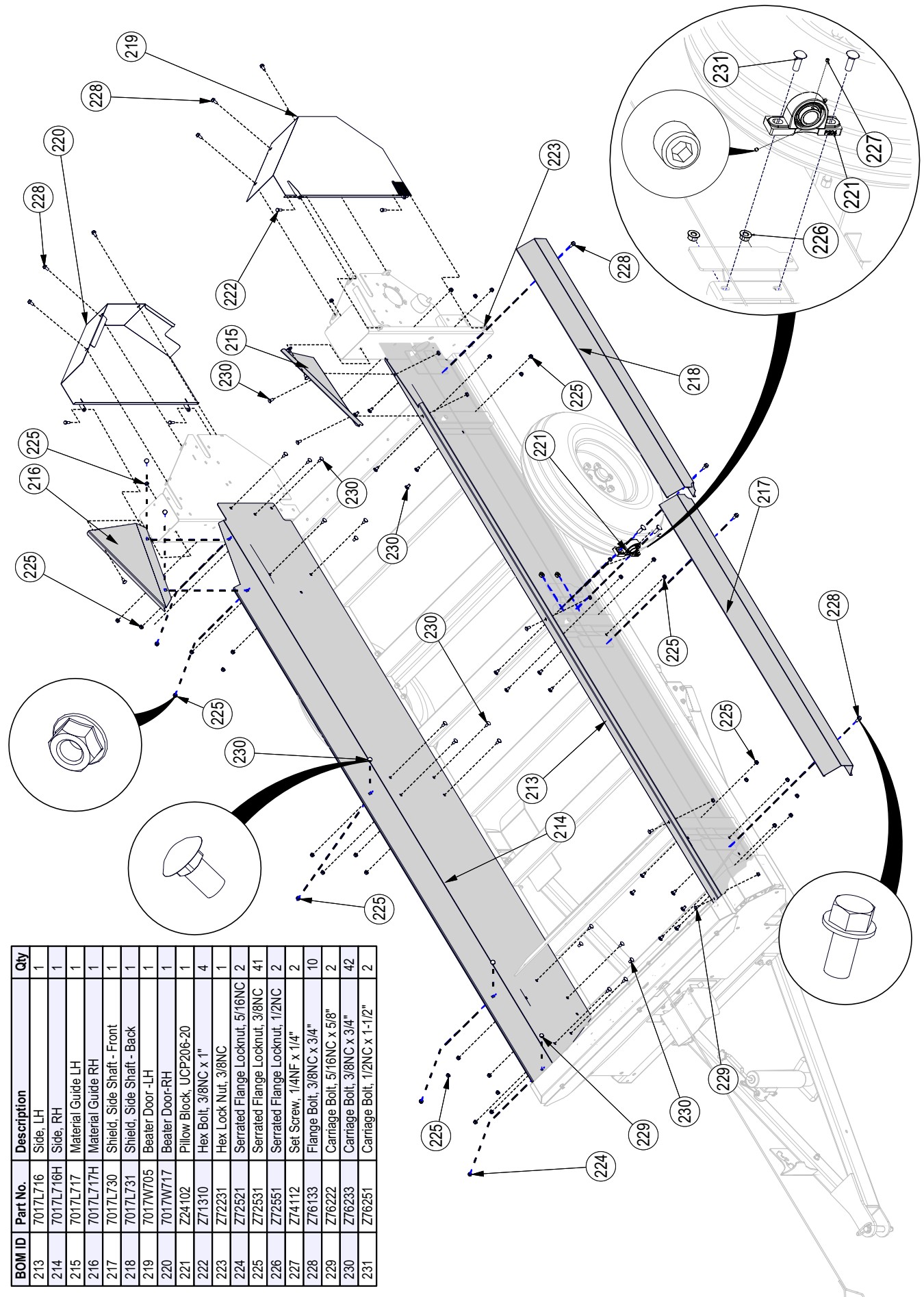


BOM ID	Part No.	Description	Qty
207	Z72531	Serrated Flange Locknut, 3/8NC	12
208	Z72958	Rivet Nut, 3/8NC x 150	3
209	Z76222	Carriage Bolt, 5/16NC x 5/8"	2
210	Z76232	Carriage Bolt, 3/8NC x 1-1/4"	8
211	Z76233	Carriage Bolt, 3/8NC x 3/4"	4
212	Z92203	Groove Pulley, 2" x 1/4"	1

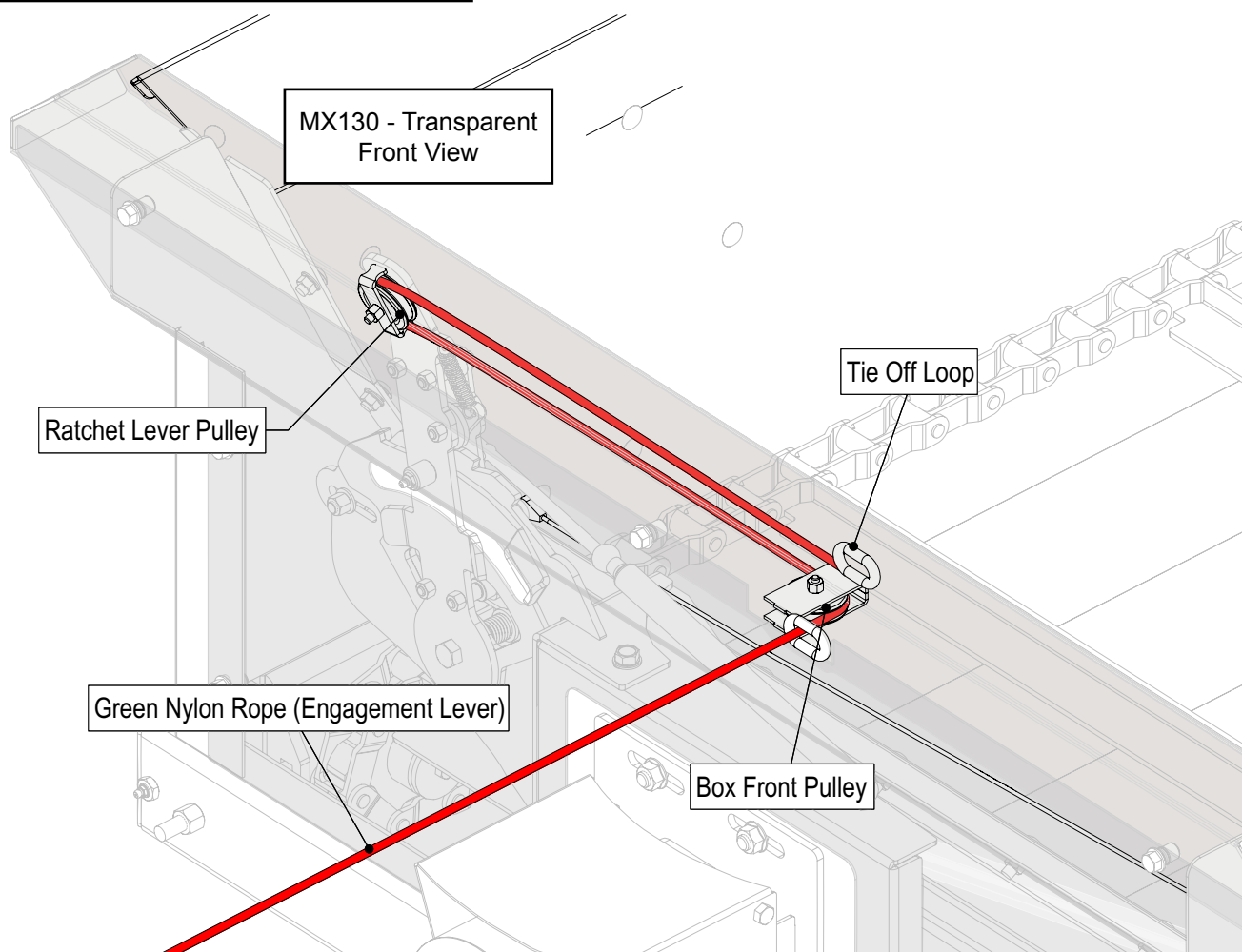
BOM ID	Part No.	Description	Qty
191	7017L776	Plate, Flap Keeper	1
199	7017L786	Corner Brace	2
201	7017S711	Material Stop Flap	1
203	7017W707	Box Front Weldment	1
204	Z71112	Hex Bolt, 1/4NC x 1-1/4"	1
205	Z72211	Hex Lock Nut, 1/4NC	1
206	Z72521	Serrated Flange Locknut, 5/16NC	2

Main Box Panel Assembly

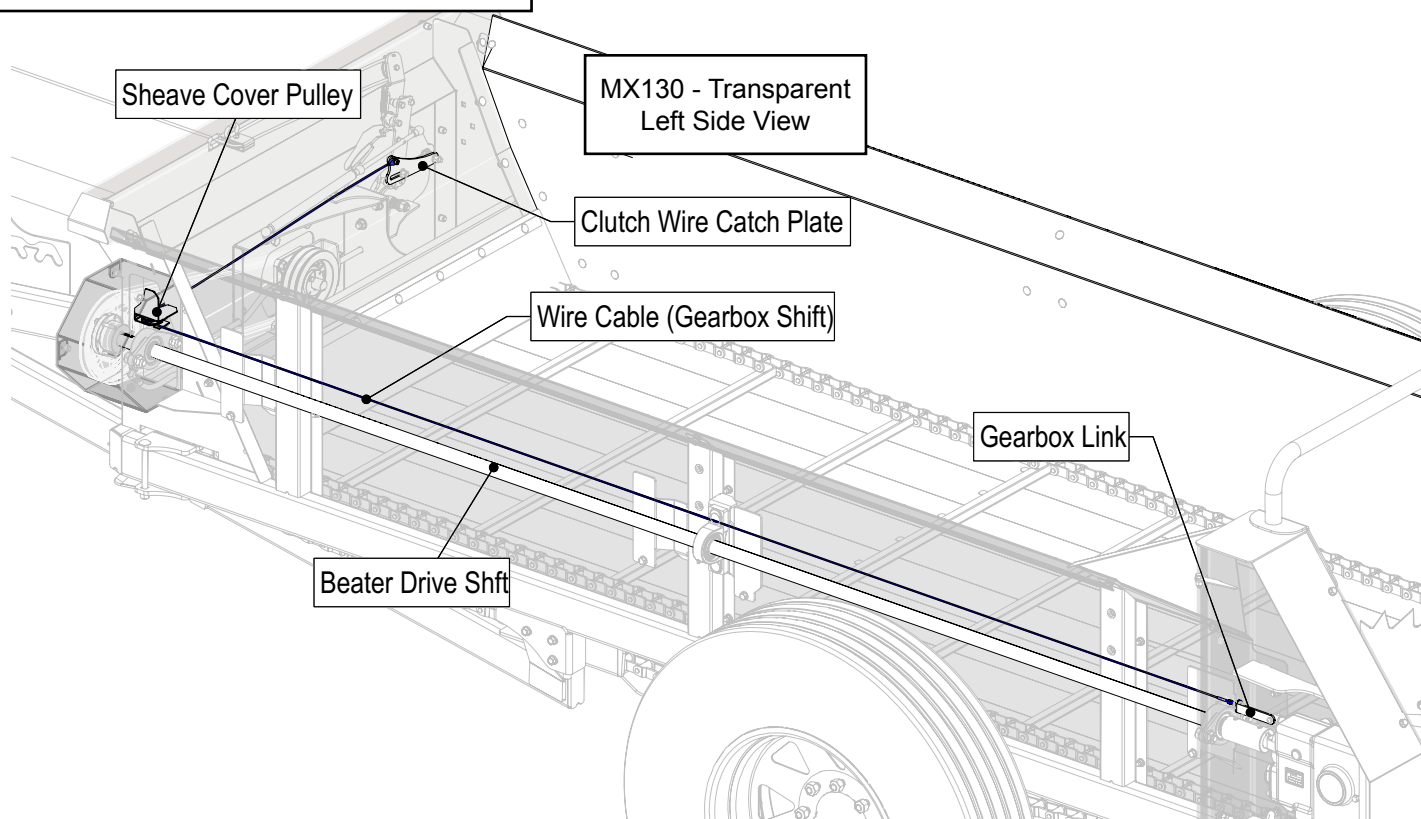
BOM ID	Part No.	Description	Qty
213	7017L716	Side, LH	1
214	7017L716H	Side, RH	1
215	7017L717	Material Guide LH	1
216	7017L717H	Material Guide RH	1
217	7017L730	Shield, Side Shaft - Front	1
218	7017L731	Shield, Side Shaft - Back	1
219	7017W705	Beater Door-LH	1
220	7017W717	Beater Door-RH	1
221	Z24102	Pillow Block, UCP206-20	1
222	Z71310	Hex Bolt, 3/8NC x 1"	4
223	Z72231	Hex Lock Nut, 3/8NC	1
224	Z72521	Serrated Flange Locknut, 5/16NC	2
225	Z72531	Serrated Flange Locknut, 3/8NC	41
226	Z72551	Serrated Flange Locknut, 1/2NC	2
227	Z74112	Set Screw, 1/4NF x 1/4"	2
228	Z76133	Flange Bolt, 3/8NC x 3/4"	10
229	Z76222	Carriage Bolt, 5/16NC x 5/8"	2
230	Z76233	Carriage Bolt, 3/8NC x 3/4"	42
231	Z76251	Carriage Bolt, 1/2NC x 1-1/2"	2



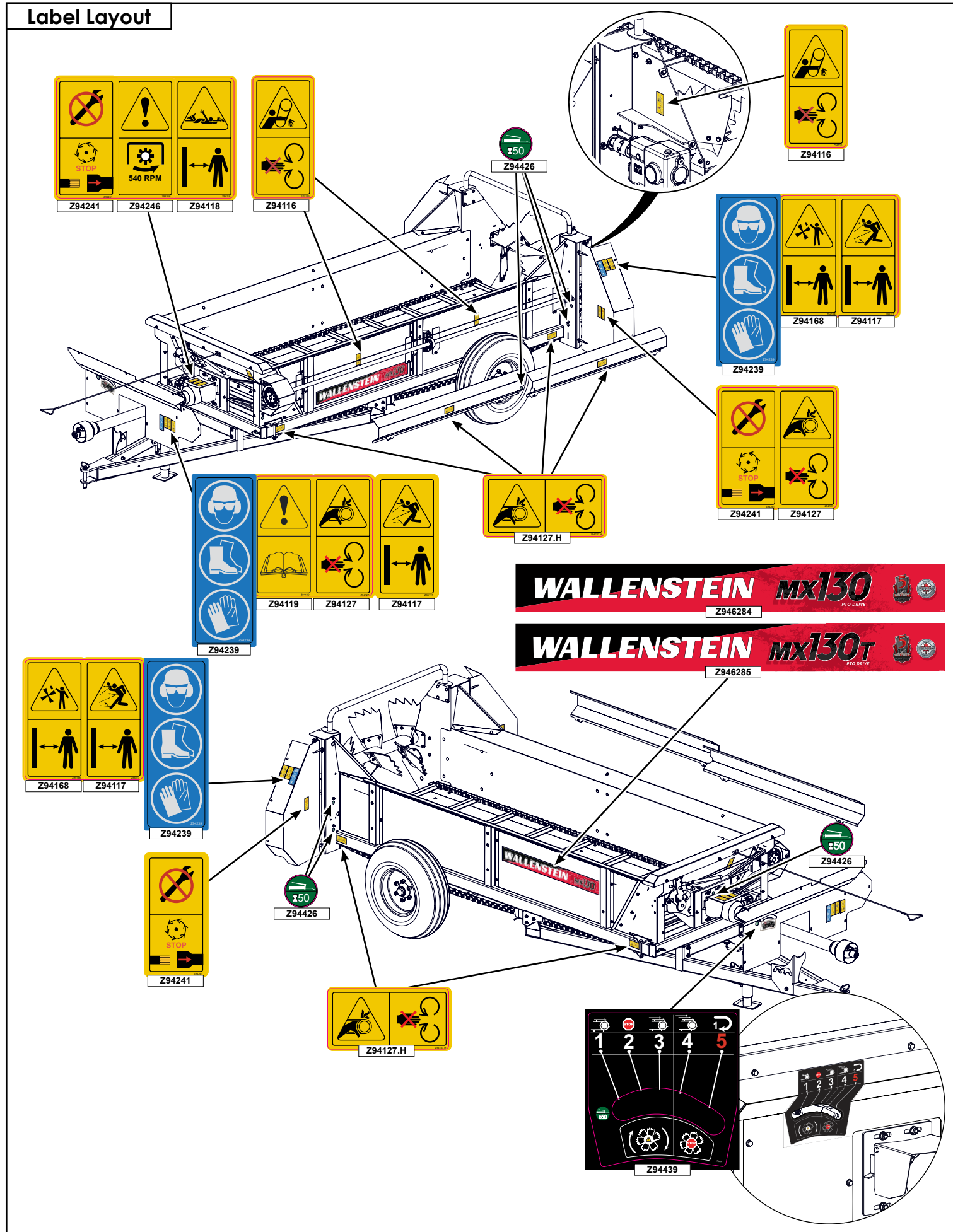
Rope Routing - Engagement Lever



Cable Routing - Beater Gearbox

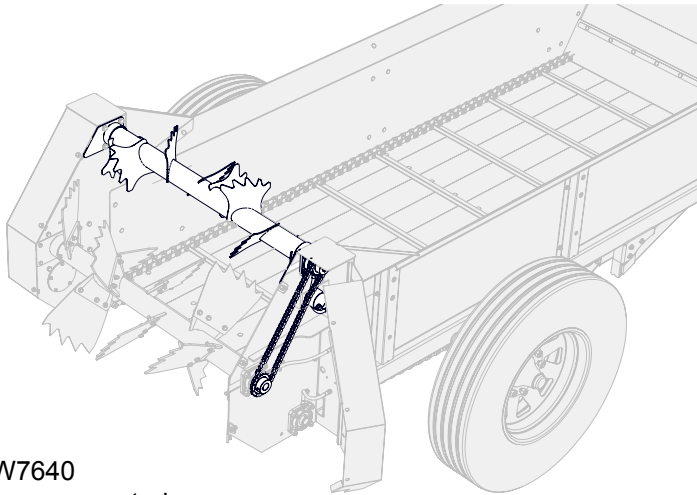


Label Layout



Accessories

Call your dealer for pricing and availability



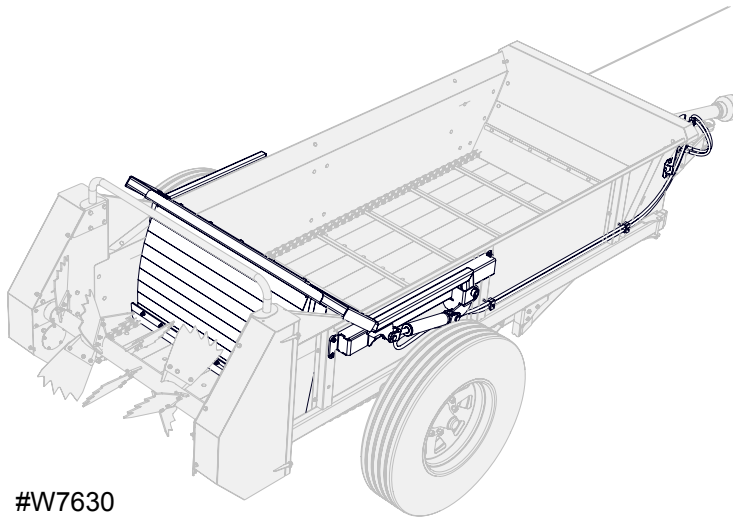
#W7640
Shown mounted

M7640 Upper Beater

The optional Upper Beater helps to break up the manure even more and improves overall shredding action.

Kit consists of upper beater bar, drive chain, sheave and hardware.

Must be dealer installed.



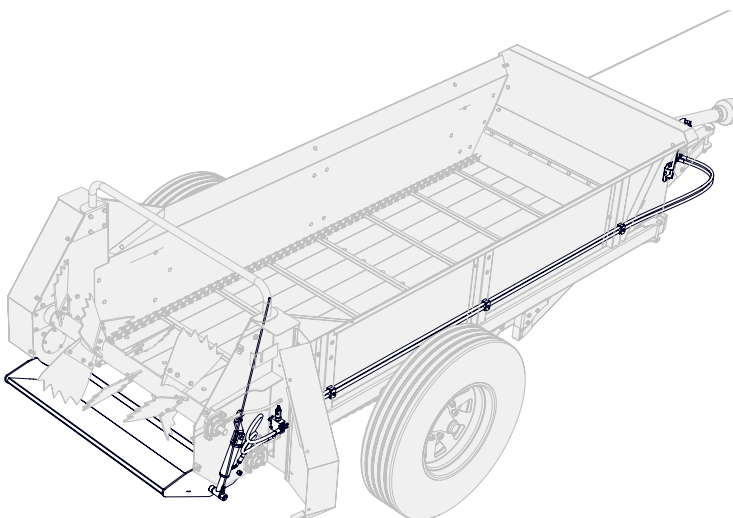
#W7630
Shown mounted

M7630 Hydraulic End Gate

The optional endgate is the ultimate way to control delivery. Close the endgate to eliminate spills during filling or on the way from stable to pasture.

Kit consists of end gate, hardware, hydraulic cylinder, hoses and components.

Must be dealer installed.



#W7620
Shown mounted

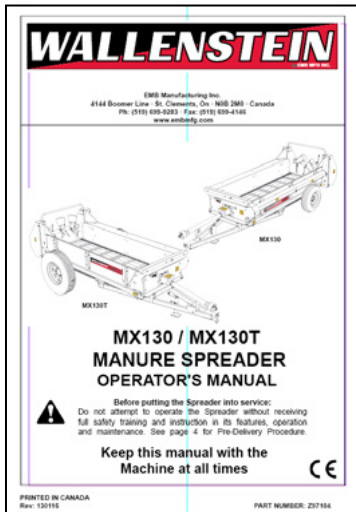
M7620 Fines Pan

A must have add on kit, the hydraulically controlled Fines Pan provides a more consistent spread of manure by causing all manure to be discharged by the beater paddles.

Kit consists of fines pan, hardware, hydraulic cylinder, hoses and components.

Must be dealer installed.

Accessories



**#Z97104
MX130 SERIES
OPERATOR'S MANUAL**

Available as a download at
www.embmfg.com