

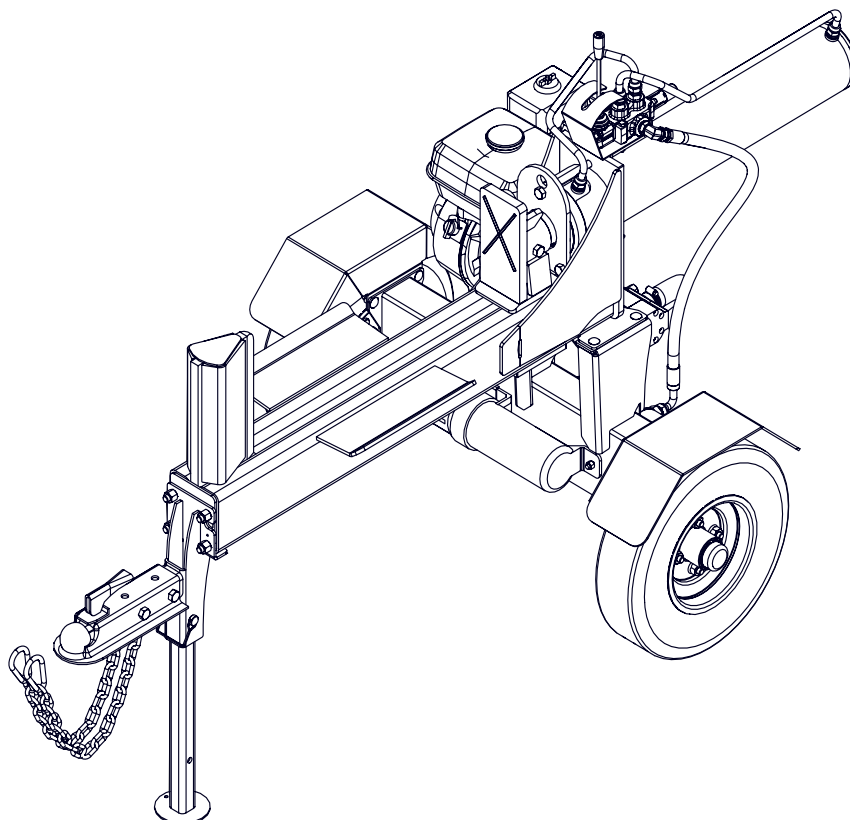


EMB Manufacturing Inc.
4144 Boomer Line · St. Clements, On · N0B 2M0 · Canada
Ph: (519) 699-9283 · Fax: (519) 699-4146
www.embmfg.com

WXR720 Trailer Wood Splitter

Parts Manual

Starting with S/N's
720001 and on



Refer to the operators
manual for safe
operation and
maintenance

Foreword

EMB Mfg. has prepared this parts manual to assist customers in ordering quality OEM replacement parts.

Proper and regular service and replacing old, worn or broken parts with the correct OEM parts are essential to prolonging the life of your EMB product. Please refer to this manual before ordering any replacement parts.

All information contained in this parts manual is based on the latest product specification available at the time of printing this manual. If your product differs from the specifications contained within this manual contact EMB Mfg. for information.

EMB reserves the right to alter specifications on their products at any time.

Reproduction of this parts manual of any kind is prohibited without prior written permission from EMB Mfg.

For parts and information please contact your dealer. If your dealer is no longer available please go to our website: <http://www.embmfg.com> and click on "FIND A DEALER NEAR YOU" for information on a local dealer.

Table of Contents Page

Bolt Torque.....	4
Hydraulic Fitting Torque	5
Wheel Lug Torque	5
Main Frame Assembly	6
Splitter Bed Assembly.....	7
Main Base Assembly	8
Hitch Assembly	9
Hub Assembly	10
Engine and Hydraulics Assembly	10
Cylinder Assembly	11
Valve Assembly.....	11
Valve Seal Kit.....	12
Hydraulic Hose List	12
Hydraulic Schematic	13
Label Layout.....	14
Accessories.....	15

Maintenance should be performed by
trained personnel only.



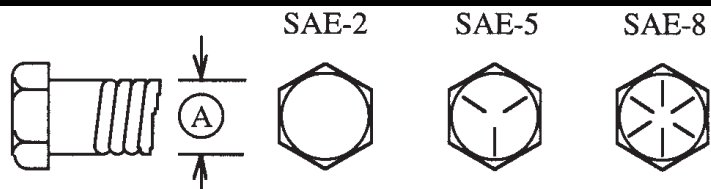
Refer to the operators
manual for safe
operation and
maintenance

Bolt Torque

CHECKING BOLT TORQUE

The tables shown below give correct torque values for various bolts and capscrews. Tighten all bolts to the torques specified in chart unless otherwise noted. Check tightness of bolts periodically, using bolt torque chart as a guide. Replace hardware with the same strength bolt.

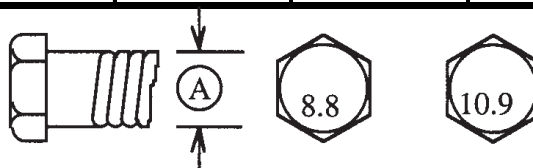
ENGLISH TORQUE SPECIFICATIONS						
Bolt Diameter "A"	Bolt Torque*					
	SAE 2 (N.m) (lb-ft)		SAE 5 (N.m) (lb-ft)		SAE 8 (N.m) (lb-ft)	
1/4"	8	6	12	9	17	12
5/16"	13	10	25	19	36	27
3/8"	27	20	45	33	63	45
7/16"	41	30	72	53	100	75
1/2"	61	45	110	80	155	115
9/16"	95	60	155	115	220	165
5/8"	128	95	215	160	305	220
3/4"	225	165	390	290	540	400
7/8"	230	170	570	420	880	650
1"	345	225	850	630	1320	970



Torque figures indicated above are valid for non-greased or non-oiled threads and heads unless otherwise specified. Therefore, do not grease or oil bolts or capscrews unless otherwise specified in this manual. When using locking elements, increase torque values by 5%.

* Torque value for bolts and capscrews are identified by their head markings.

METRIC TORQUE SPECIFICATIONS				
Bolt Diameter "A"	Bolt Torque*			
	8.8 (N.m) (lb-ft)		10.9 (N.m) (lb-ft)	
M3	0.5	0.4	1.8	1.3
M4	3	2.2	4.5	3.3
M5	6	4	9	7
M6	10	7	15	11
M8	25	18	35	26
M10	50	37	70	52
M12	90	66	125	92
M14	140	103	200	148
M16	225	166	310	229
M20	435	321	610	450
M24	750	553	1050	774
M30	1495	1103	2100	1550
M36	2600	1917	3675	2710



Hydraulic Fitting Torque

Tightening Flare Type Tube Fittings *

1. Check flare and flare seat for defects that might cause leakage.
2. Align tube with fitting before tightening.
3. Lubricate connection and hand tighten swivel nut until snug.
4. To prevent twisting the tube(s), use two wrenches. Place one wrench on the connector body and with the second tighten the swivel nut to the torque shown.

Tube Size OD (in.)	Nut Size Across Flats (in.)	Torque Value*		Recommended Turns To Tighten (After Finger Tightening)	
		(N.m)	(lb-ft)	(Flats)	(Turn)
3/16	7/16	8	6	1	1/6
1/4	9/16	12	9	1	1/6
5/16	5/8	16	12	1	1/6
3/8	11/16	24	18	1	1/6
1/2	7/8	46	34	1	1/6
5/8	1	62	46	1	1/6
3/4	1-1/4	102	75	3/4	1/8
7/8	1-3/8	122	90	3/4	1/8

The torque values shown are based on lubricated connections as in reassembly.

Wheel Lug Torque

It is extremely important safety procedure to apply and maintain proper wheel mounting torque on your trailer axle. Torque wrenches are the best method to assure the proper amount of torque is being applied to a fastener.

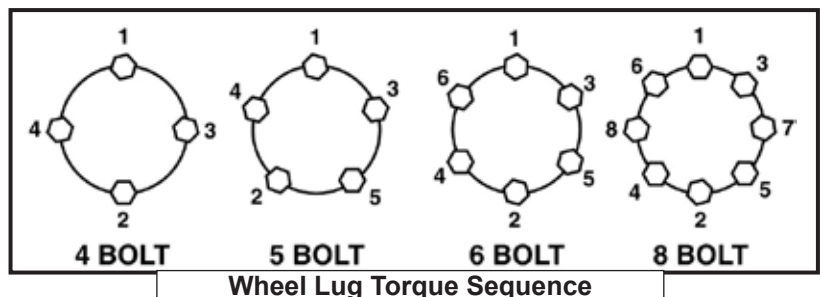
Wheel lugs should be torqued before first road use and after each wheel removal. Check and re torque after the first 16Km (10 miles), 40Km (25 miles), and again at 80Km (50 miles). Check periodically thereafter.

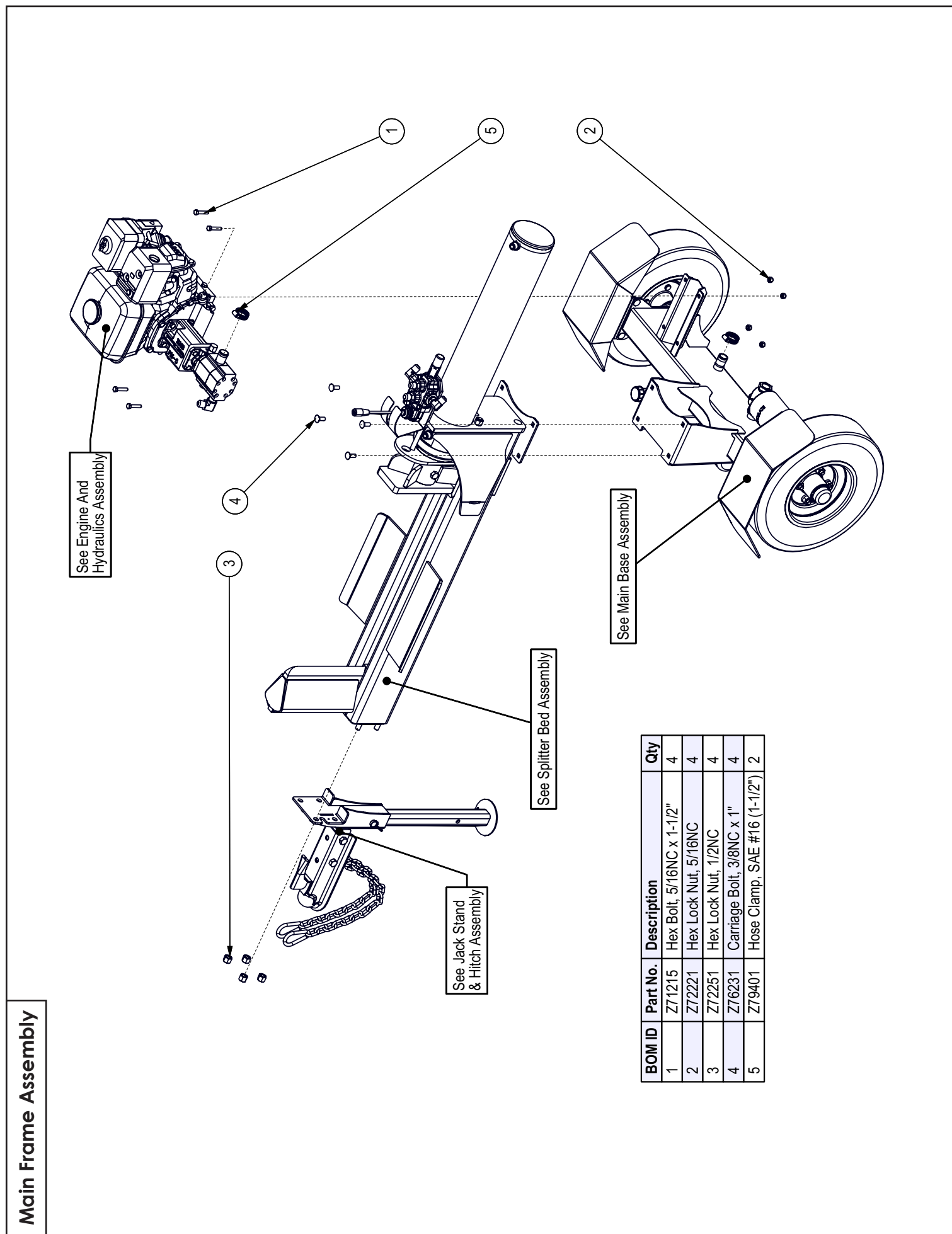
Note: Wheel lugs must be applied and maintained at the proper torque levels to prevent loose wheels, broken studs, and possible dangerous separation of wheels from your axle.

- Start all lugs by hand to prevent cross threading.
- Tighten lugs in sequence, per wheel lug torque sequence chart.
- The tightening of the fasteners should be done in stages. Following the recommended sequence, tighten fasteners per wheel torque requirements chart.

Wheel Torque Requirements

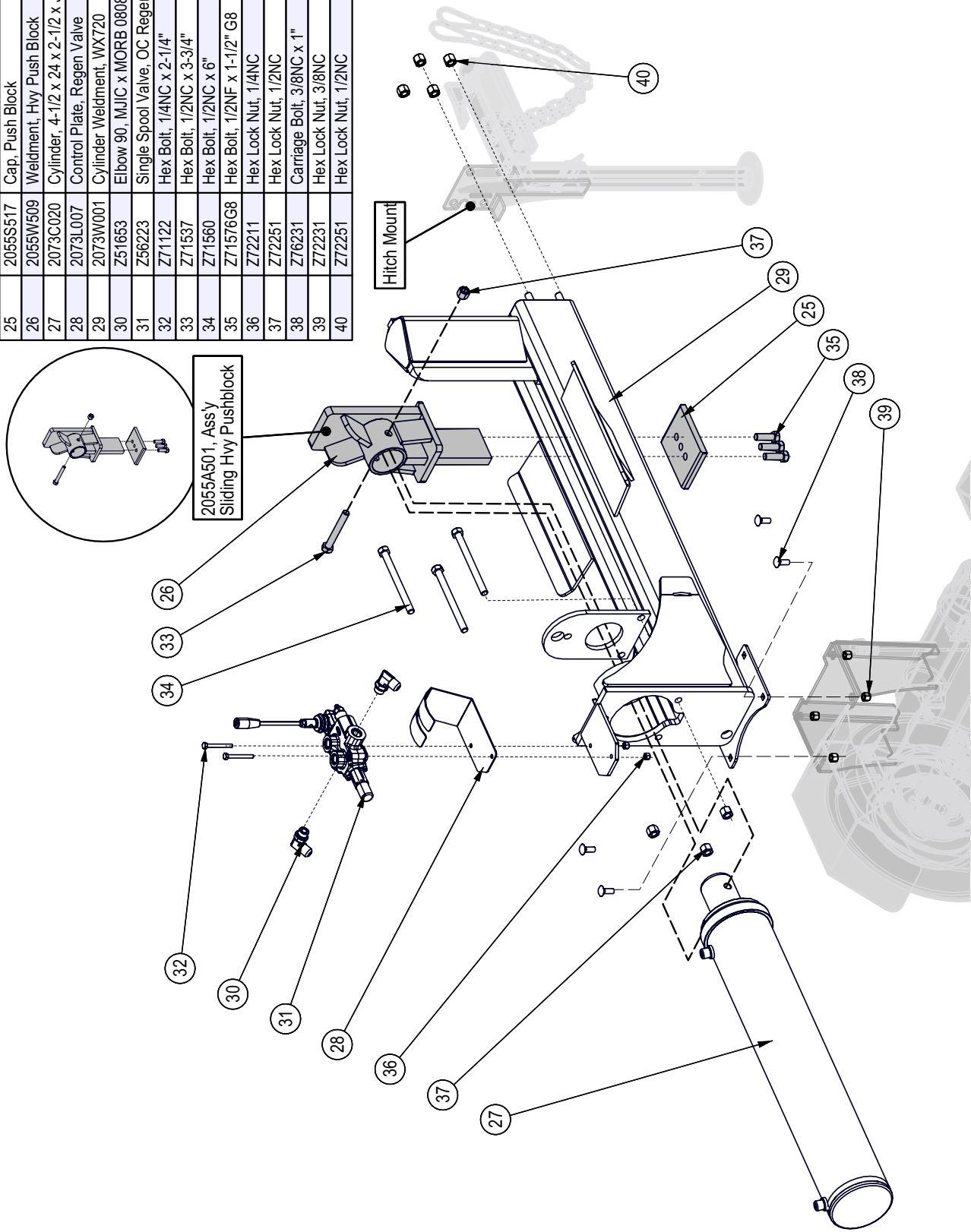
Wheel Size	Torque Unit	1st Stage	2nd Stage	3rd Stage
8"	ft-lbs	12 - 20	30 - 35	45 - 55
	Nm	16 - 26	39 - 45.5	58.5 - 71.5
12"	ft-lbs	20 - 25	35 - 40	50 - 60
	Nm	26 - 32.5	45.5 - 52	65 - 78
13"	ft-lbs	20 - 25	35 - 40	50 - 60
	Nm	26 - 32.5	45.5 - 52	65 - 78
14"	ft-lbs	20 - 25	50 - 60	90 - 120
	Nm	26 - 32.5	65 - 78	117 - 156
15"	ft-lbs	20 - 25	50 - 60	90 - 120
	Nm	26 - 32.5	65 - 78	117 - 156
16"	ft-lbs	20 - 25	50 - 60	90 - 120
	Nm	26 - 32.5	65 - 78	117 - 156



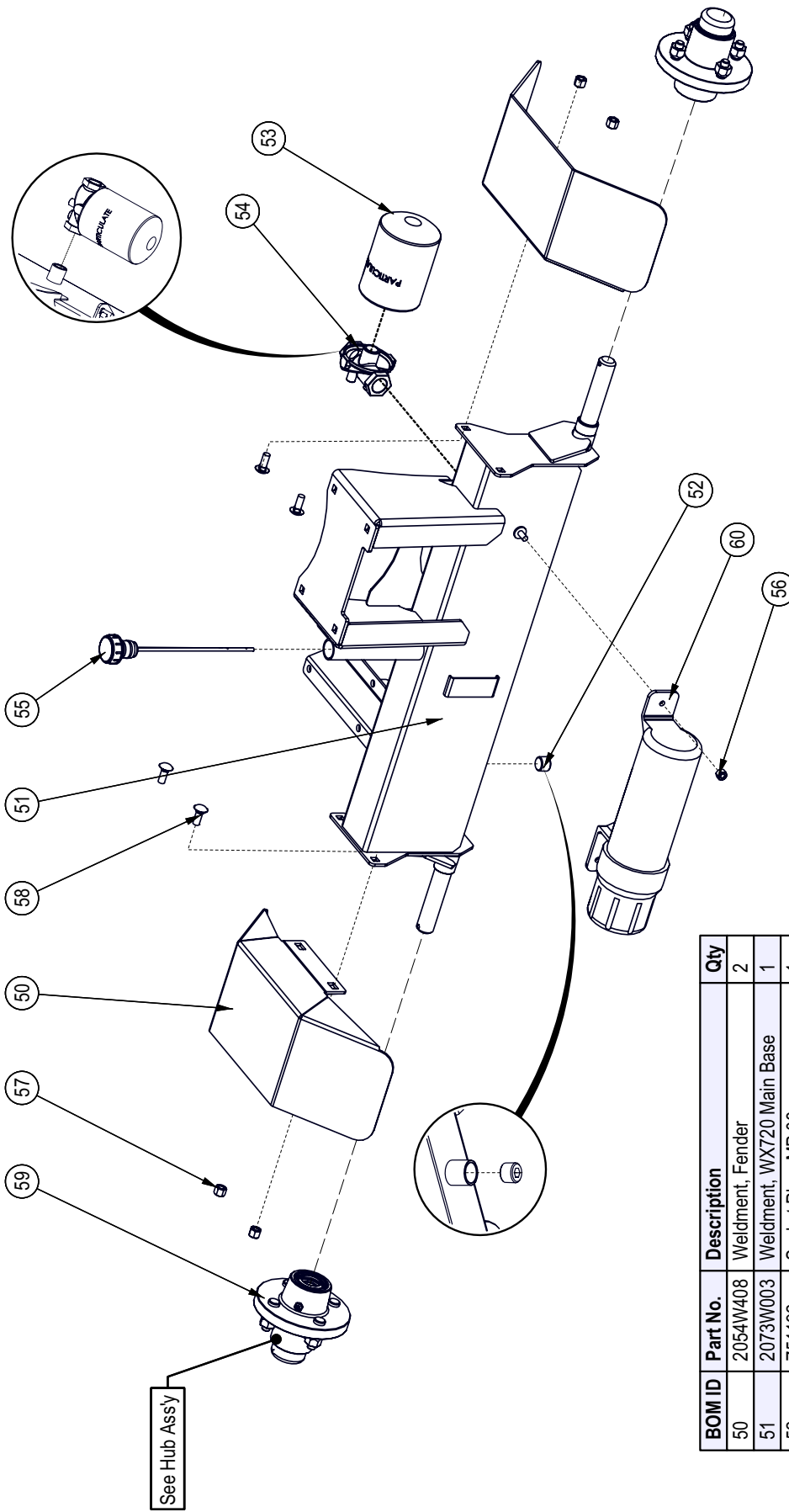


Splitter Bed Assembly

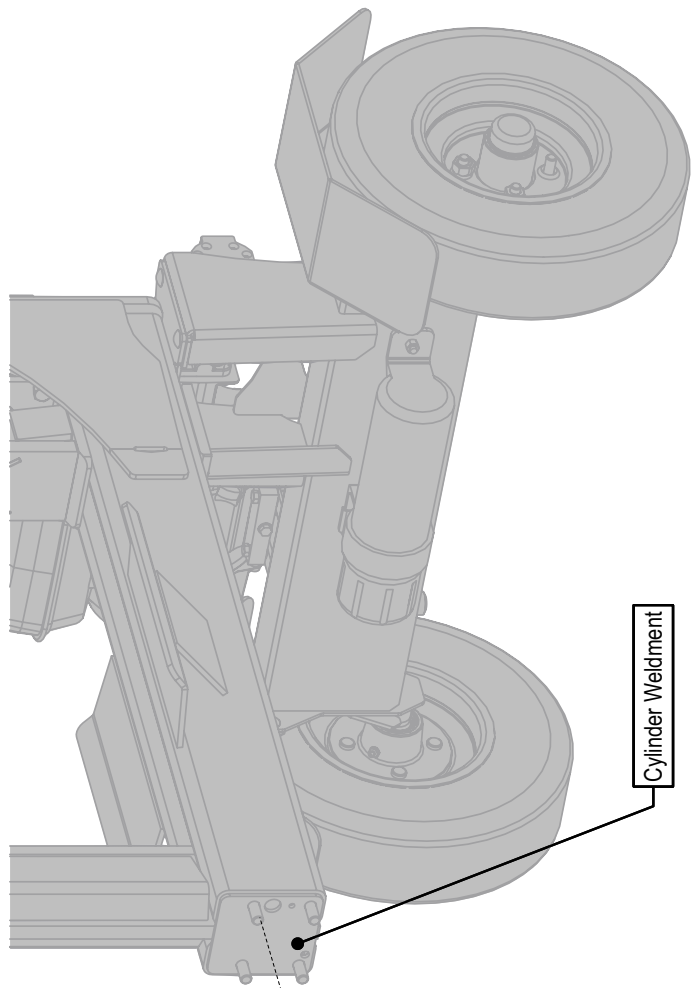
BOM ID	Part No.	Description	Qty
25	2055S517	Cap, Push Block	1
26	2055W509	Weldment, Hvy Push Block	1
27	2073C020	Cylinder, 4-1/2 x 24 x 2-1/2 x JIC	1
28	2073L007	Control Plate, Regen Valve	1
29	2073W001	Cylinder Weldment, WX720	1
30	Z51653	Elbow 90, MJIC x MORB 0808	2
31	Z56223	Single Spool Valve, OC Regen SCDK x 12GPM	1
32	Z71122	Hex Bolt, 1/4NC x 2-1/4"	2
33	Z71537	Hex Bolt, 1/2NC x 3-3/4"	1
34	Z71560	Hex Bolt, 1/2NC x 6"	3
35	Z71576G8	Hex Bolt, 1/2NF x 1-1/2" G8	3
36	Z72211	Hex Lock Nut, 1/4NC	2
37	Z72251	Hex Lock Nut, 1/2NC	4
38	Z76231	Carriage Bolt, 3/8NC x 1"	4
39	Z72231	Hex Lock Nut, 3/8NC	4
40	Z72251	Hex Lock Nut, 1/2NC	4



Main Base Assembly



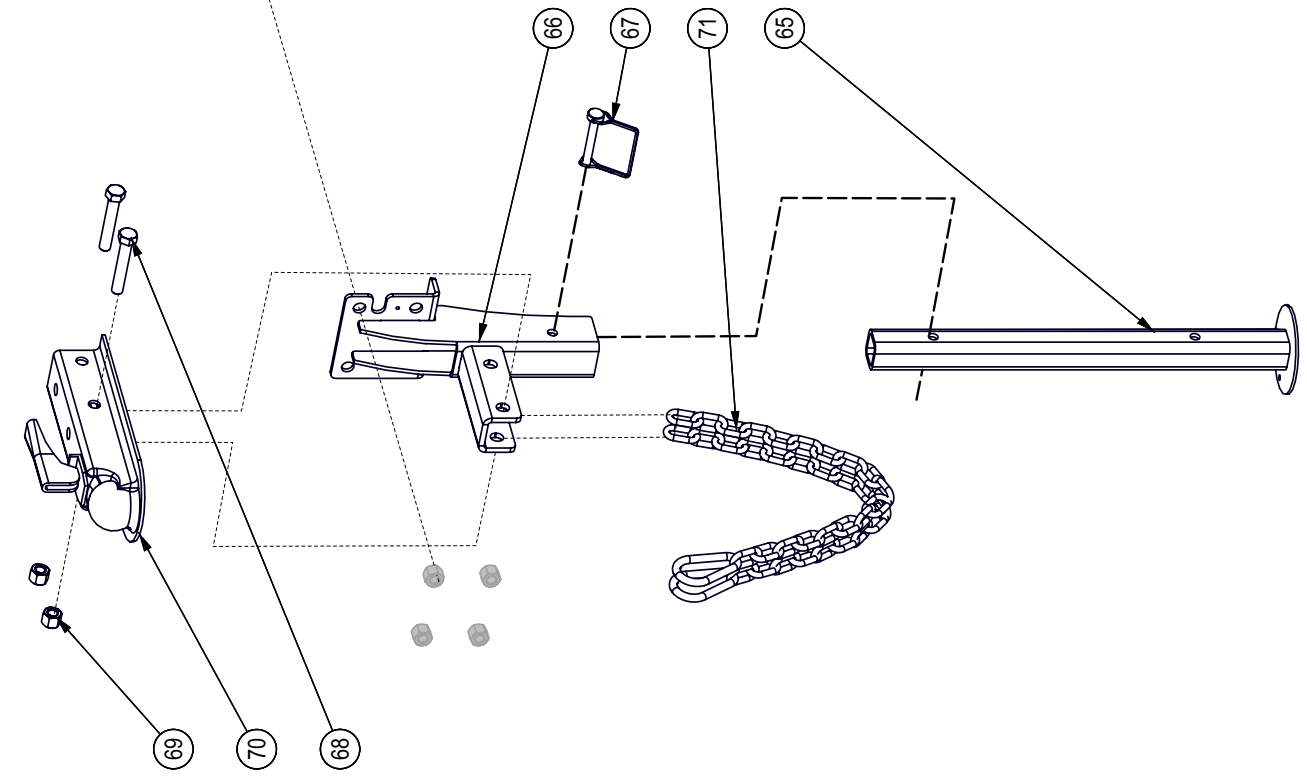
BOM ID	Part No.	Description	Qty
50	2054W408	Weldment, Fender	2
51	2073W003	Weldment, WX720 Main Base	1
52	Z51192	Socket Plug, MP 08	1
53	Z55301	Particulate Filter, FP12	1
54	Z55302	Filter Cap, MP12 x FP12	1
55	Z55404	Vented Plug Dipstick x 9"	1
56	Z72221	Hex Lock Nut, 5/16NC	1
57	Z72231	Hex Lock Nut, 3/8NC	4
58	Z76231	Carriage Bolt, 3/8NC x 1"	4
59	Z91202	Idler Hub Assy, 1000lbs x 4on4" x 1"	2
60	Z96503	Manual Tube, 3-1/2" Short	1



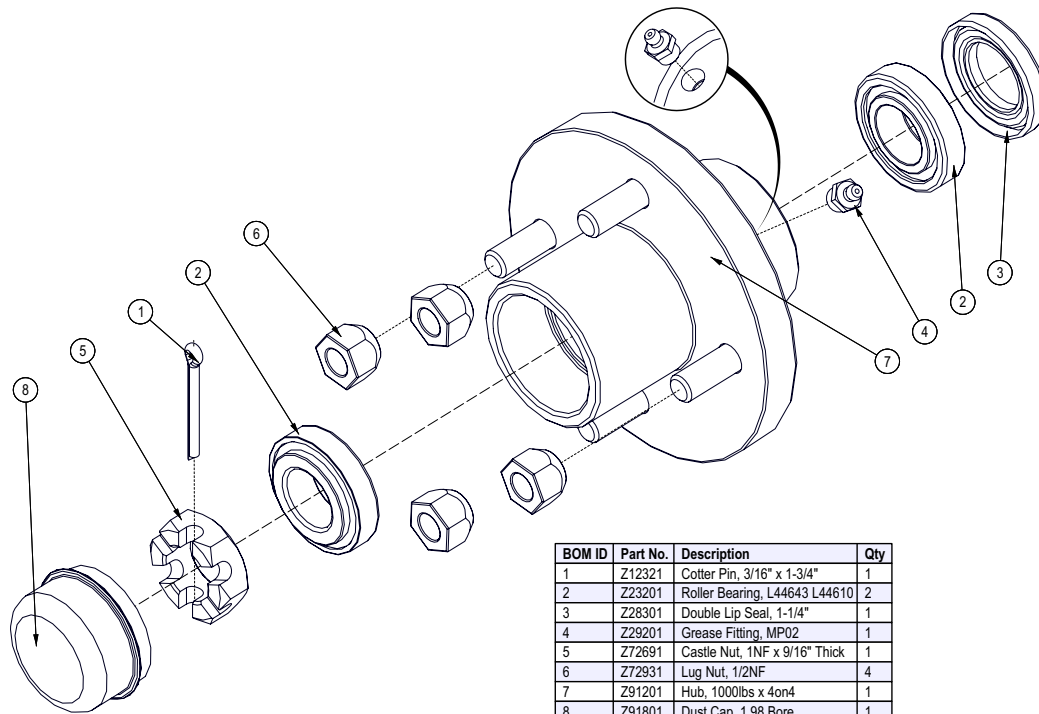
BOM ID	Part No.	Description	Qty
65	2052W206	Jack Stand, Front	1
66	2073W002	Weldment, Hitch Mount WX720	1
67	Z12432	Snap Lock Pin, 3/8" x 2-1/2"	1
68	Z71530	Hex Bolt, 1/2NC x 3"	2
69	Z72251	Hex Lock Nut, 1/2NC	2
70	Z91614	Hitch Coupler, 2" Ball x 2" x 3500lbs	1
71	Z92303	Safety Chain, 1/4" x 2ft with Snap	2

Cylinder Weldment

Hitch Assembly



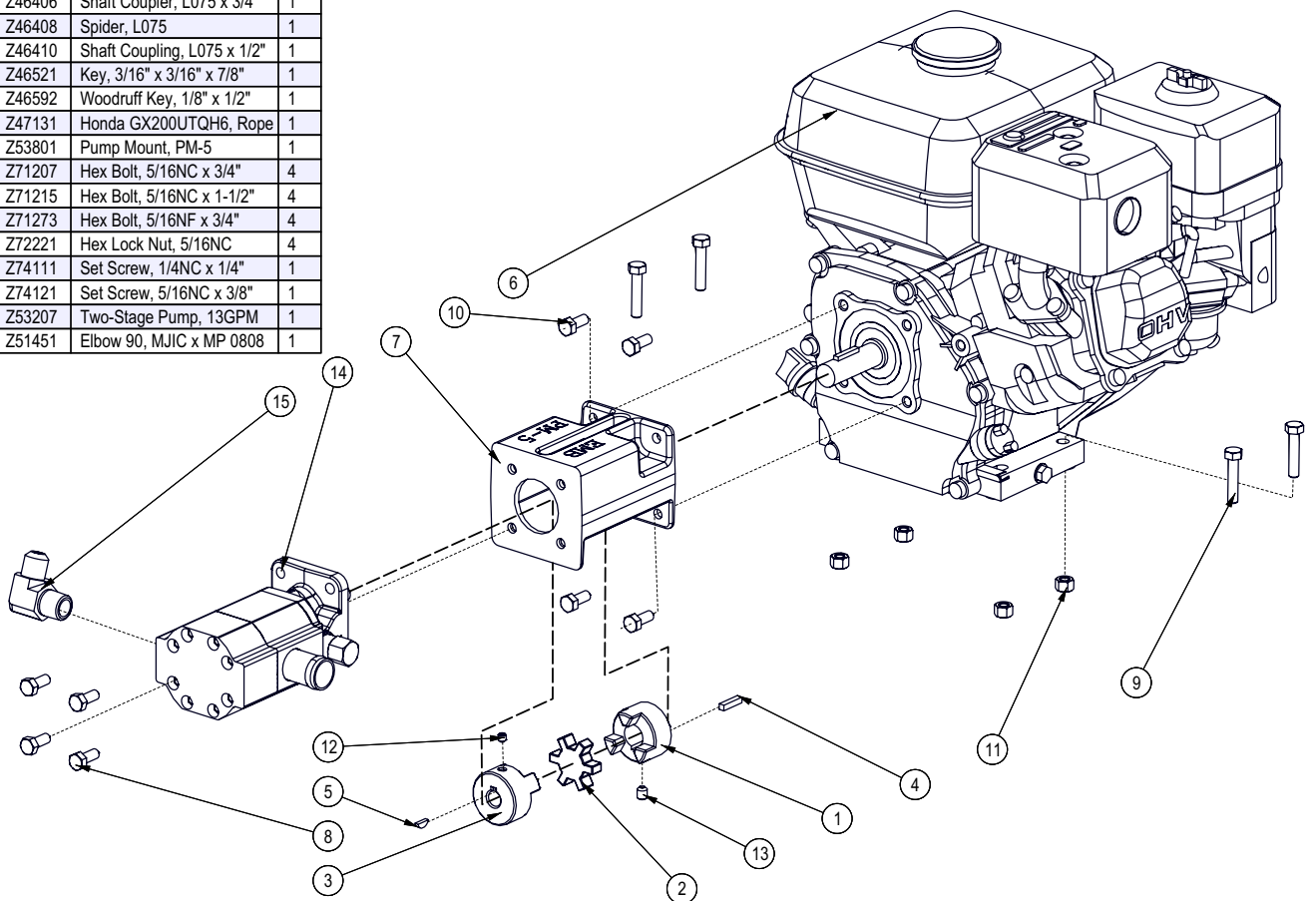
Hub Assembly



BOM ID	Part No.	Description	Qty
1	Z12321	Cotter Pin, 3/16" x 1-3/4"	1
2	Z23201	Roller Bearing, L44643 L44610	2
3	Z28301	Double Lip Seal, 1-1/4"	1
4	Z28201	Grease Fitting, MP02	1
5	Z72691	Castle Nut, 1NF x 9/16" Thick	1
6	Z72931	Lug Nut, 1/2NF	4
7	Z91201	Hub, 1000lbs x 4on4	1
8	Z91801	Dust Cap, 1.98 Bore	1

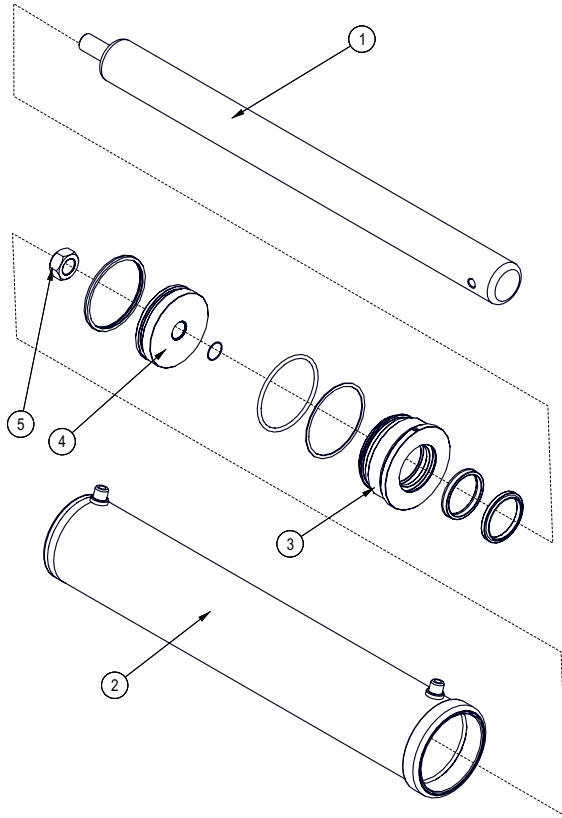
Engine and Hydraulics Assembly

BOM ID	Part No.	Description	Qty
1	Z46406	Shaft Coupler, L075 x 3/4"	1
2	Z46408	Spider, L075	1
3	Z46410	Shaft Coupling, L075 x 1/2"	1
4	Z46521	Key, 3/16" x 3/16" x 7/8"	1
5	Z46592	Woodruff Key, 1/8" x 1/2"	1
6	Z47131	Honda GX200UTQH6, Rope	1
7	Z53801	Pump Mount, PM-5	1
8	Z71207	Hex Bolt, 5/16NC x 3/4"	4
9	Z71215	Hex Bolt, 5/16NC x 1-1/2"	4
10	Z71273	Hex Bolt, 5/16NF x 3/4"	4
11	Z72221	Hex Lock Nut, 5/16NC	4
12	Z74111	Set Screw, 1/4NC x 1/4"	1
13	Z74121	Set Screw, 5/16NC x 3/8"	1
14	Z53207	Two-Stage Pump, 13GPM	1
15	Z51451	Elbow 90, MJIC x MP 0808	1



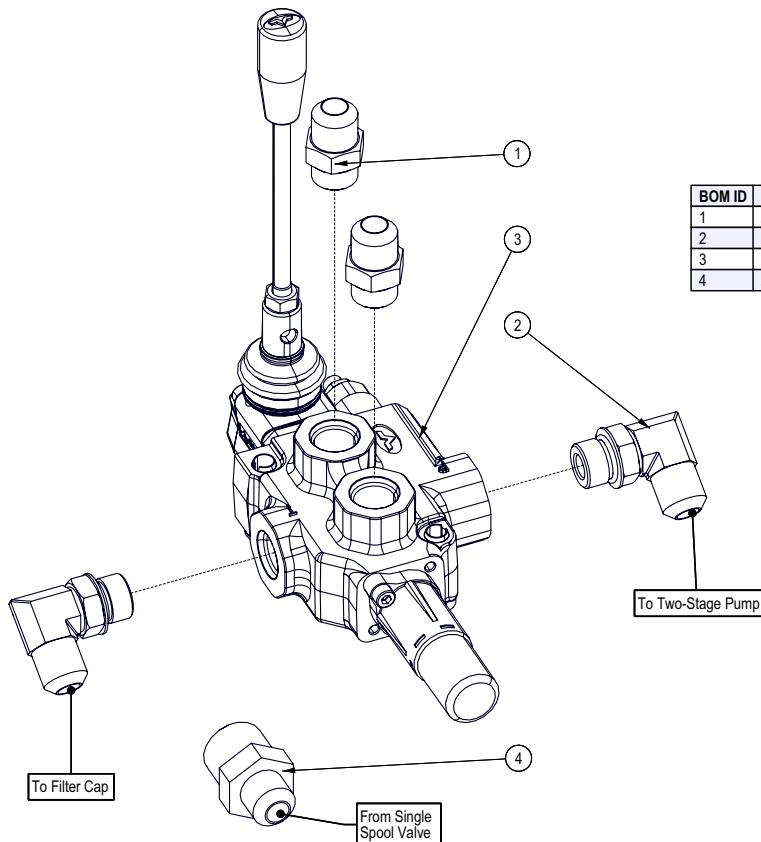
Cylinder Assembly

Seal Kit #SLK-4525



BOM ID	Part No.	Description	Qty
1	2073C0202	Rod, 2-1/2x 1	1
2	2073C0204	Barrel, 4-1/2" x JIC	1
3	G450-250S	Gland, 4-1/2" x 2-1/2"	1
4	P100-450SP	Piston, 4-1/2" Bore	1
5	Z722909	Hex Top-lock Nut, 1-14NF	1

Valve Assembly



BOM ID	Part No.	Description	Qty
1	Z51643	Straight, MJIC x MORB 0808	2
2	Z51653	Elbow 90, MJIC x MORB 0808	2
3	Z56223	Single Spool Valve, OC Regen SCDK x 12GPM	1
4	Z51447	Straight, MJIC x MP 0812	1

Valve Seal Kit

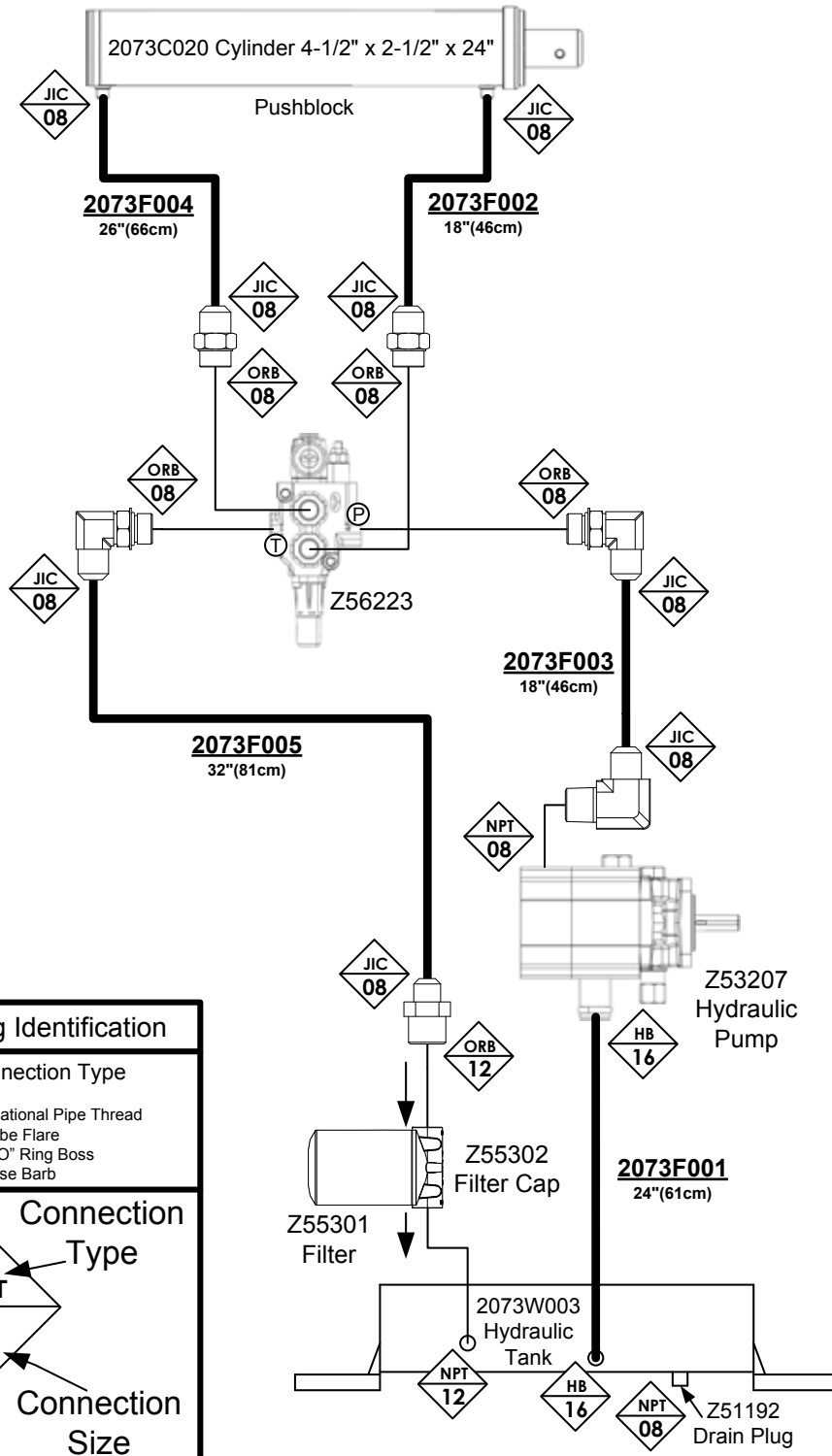
Seal kit for #Z56223 Valve:

Contact EMBMFG.com

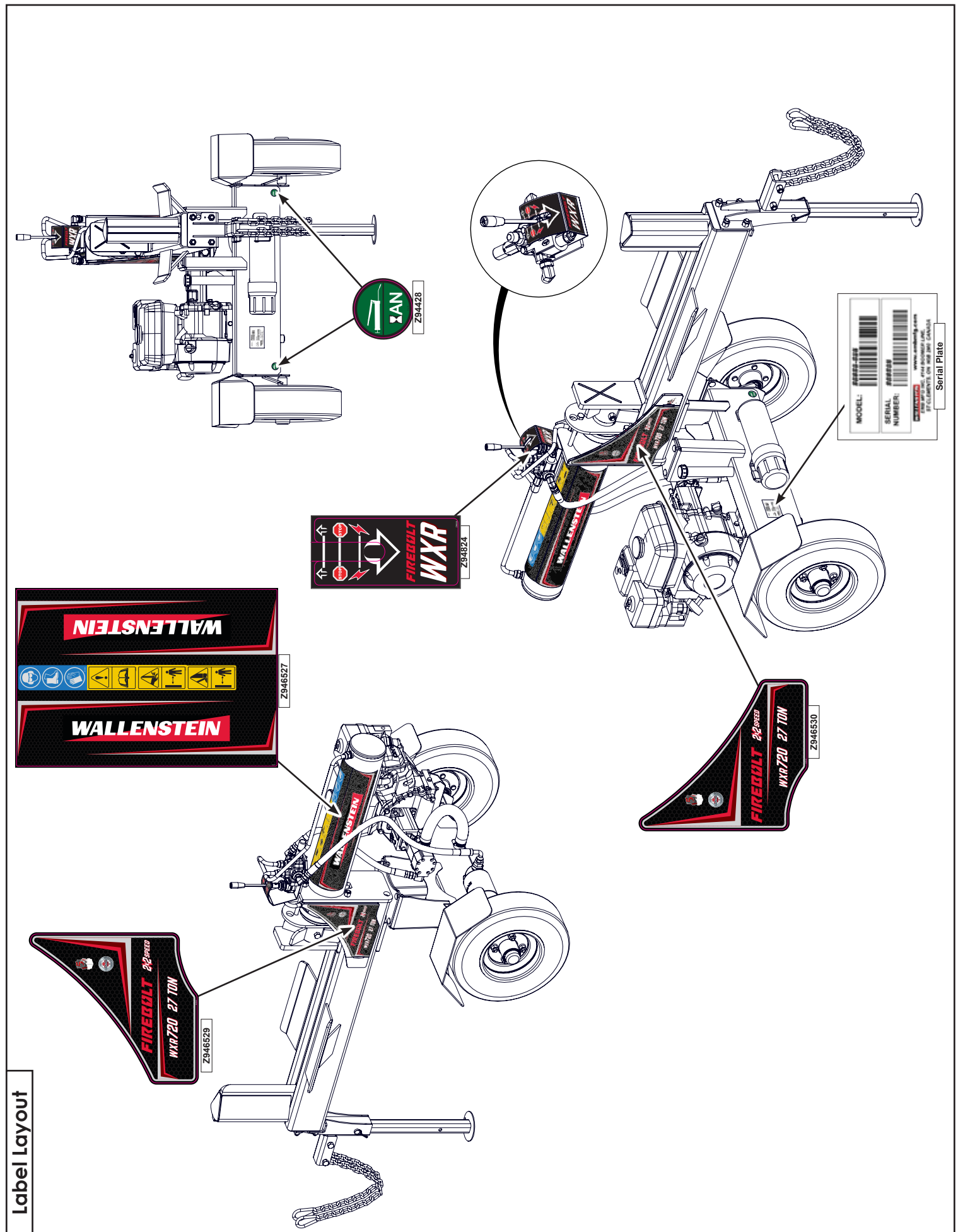
Hydraulic Hose List

Part No.	Description	Qty
2073F001	Suction Hose, 1 x 24	1
2073F002	1/2" Tube, FJIC08 x FJIC08 x 18	1
2073F003	1/2" Hose, FJIC08 x FJIC08 x 18	1
2073F004	1/2" Tube, FJIC08 x 90FJIC08 x 26	1
2073F005	1/2" Hose, FJIC08 x 90FJIC08 x 32	1

Hydraulic Schematic



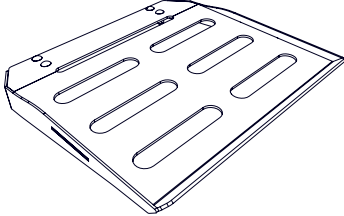
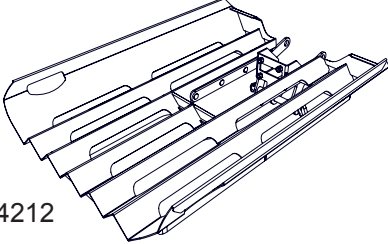
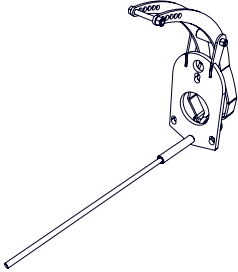

Fitting Identification	
Connection Type	
NPT – National Pipe Thread JIC – Tube Flare ORB – "O" Ring Boss HB – Hose Barb	
Connection	
Type	Connection Size
NPT	12



Label Layout

Accessories

Call your dealer for pricing and availability

 <p>#W4211</p>	<p>#W4211 Clamp-on Shelf Extension</p> <p>A great way to add versatility to your splitter.</p>
 <p>#W4212</p>	<p>#W4212 Folding Splitter Shelf</p> <p>Helps to move your split wood away from the splitter, load into your wheelbarrow!</p>
 <p>#W4213</p>	<p>#W4213 Splitter Stroke Limiter</p> <p>Manually set your return stroke. Great for short pieces, saves time and gets your splitting job done even faster!</p>
	<p>#Z97105 WXR720 & WXR740 TRAILER WOOD SPLITTER OPERATOR'S MANUAL</p> <p>Available as a download at www.embmfg.com</p>