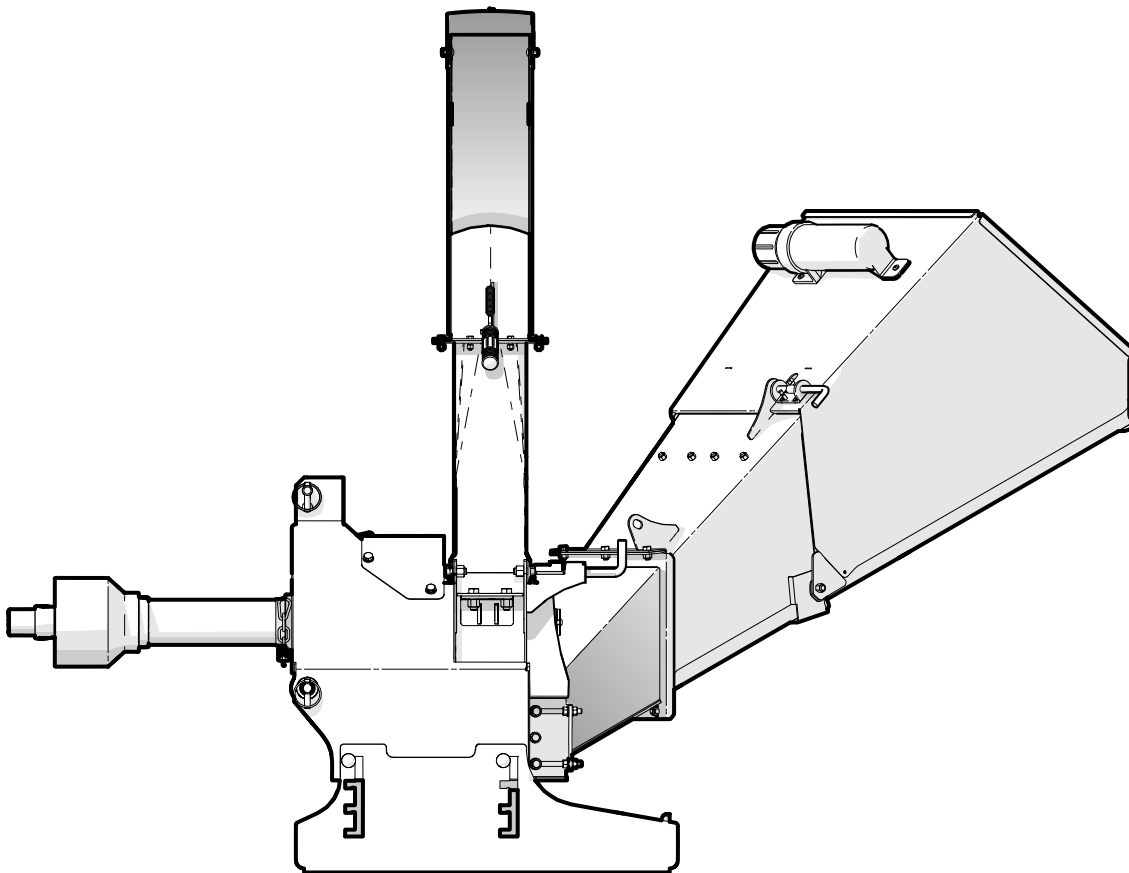


PARTS MANUAL

Serial Number 152S00002 & up

BX52S **3 PH SELF-FEED CHIPPER**



Foreword

EMB Manufacturing has prepared this parts manual to assist customers in ordering quality OEM replacement parts.

Regular maintenance, and replacing old, worn or broken parts with the correct OEM parts, is essential in prolonging the life of your EMB product. Please refer to this manual to identify replacement parts.

To order parts, contact your Wallenstein dealer or distributor. Have the product model and serial number handy.

If your dealer is no longer available, please go to our website: <http://www.wallensteinequipment.com> and click on the [Dealer Locator](#) to find the nearest dealer.

All information contained in this parts manual is current as per the revision date at the bottom of the page. EMB reserves the right to change product specifications at any time without notice.

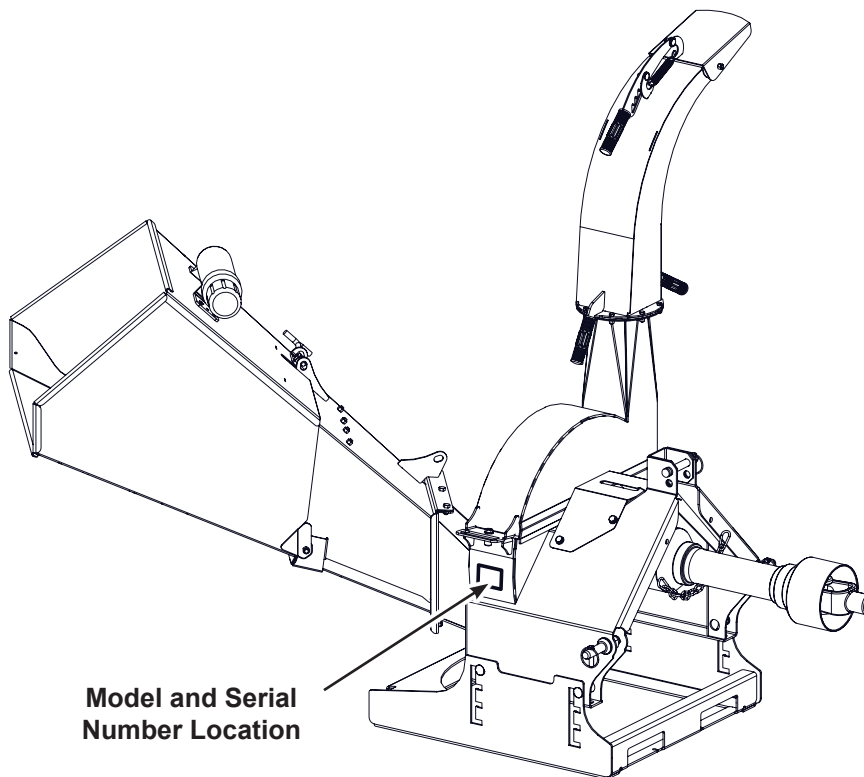
If your product specifications differ from those contained in this manual, contact EMB Manufacturing for information.

Reproduction of this parts manual of any kind is prohibited without prior written permission from EMB Manufacturing.

WARNING!

Refer to the operators manual for safe operation and maintenance.

Maintenance should be performed by trained personnel only.

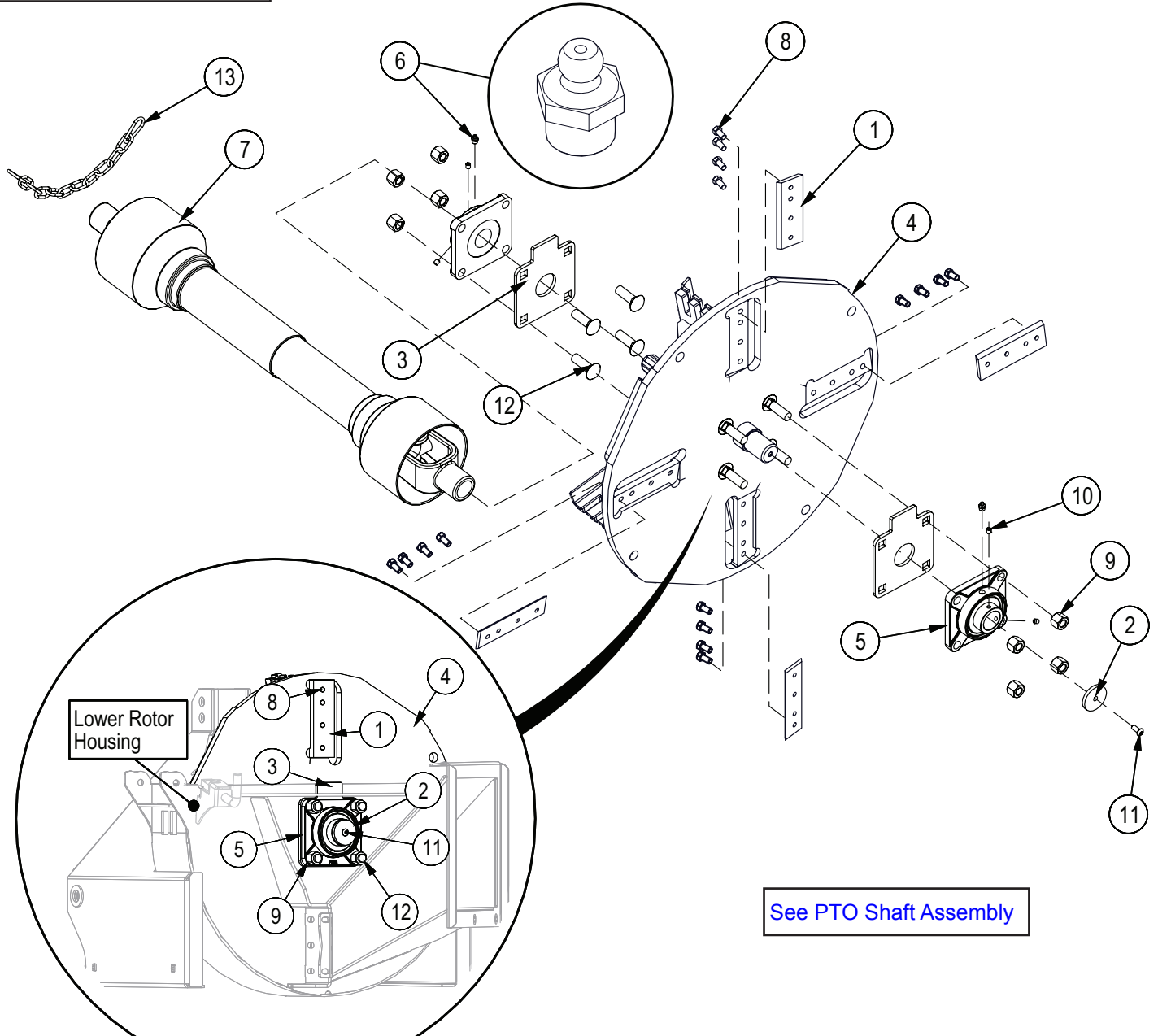


EMB Manufacturing inc.
4144 Boomer Line, St. Clements ON, Canada, N0B 2M0
www.wallensteinequipment.com

Contents

Rotor Assembly.....	4
Lower Rotor Housing	5
Feed Chute	6
Ledger Knife Detail	7
Upper Rotor Housing.....	7
Discharge Chute	8
PTO Shaft Assembly	9
Decal Layout – Left Side View	10
Decal Layout – Right Side View.....	11
Bolt Torque	12

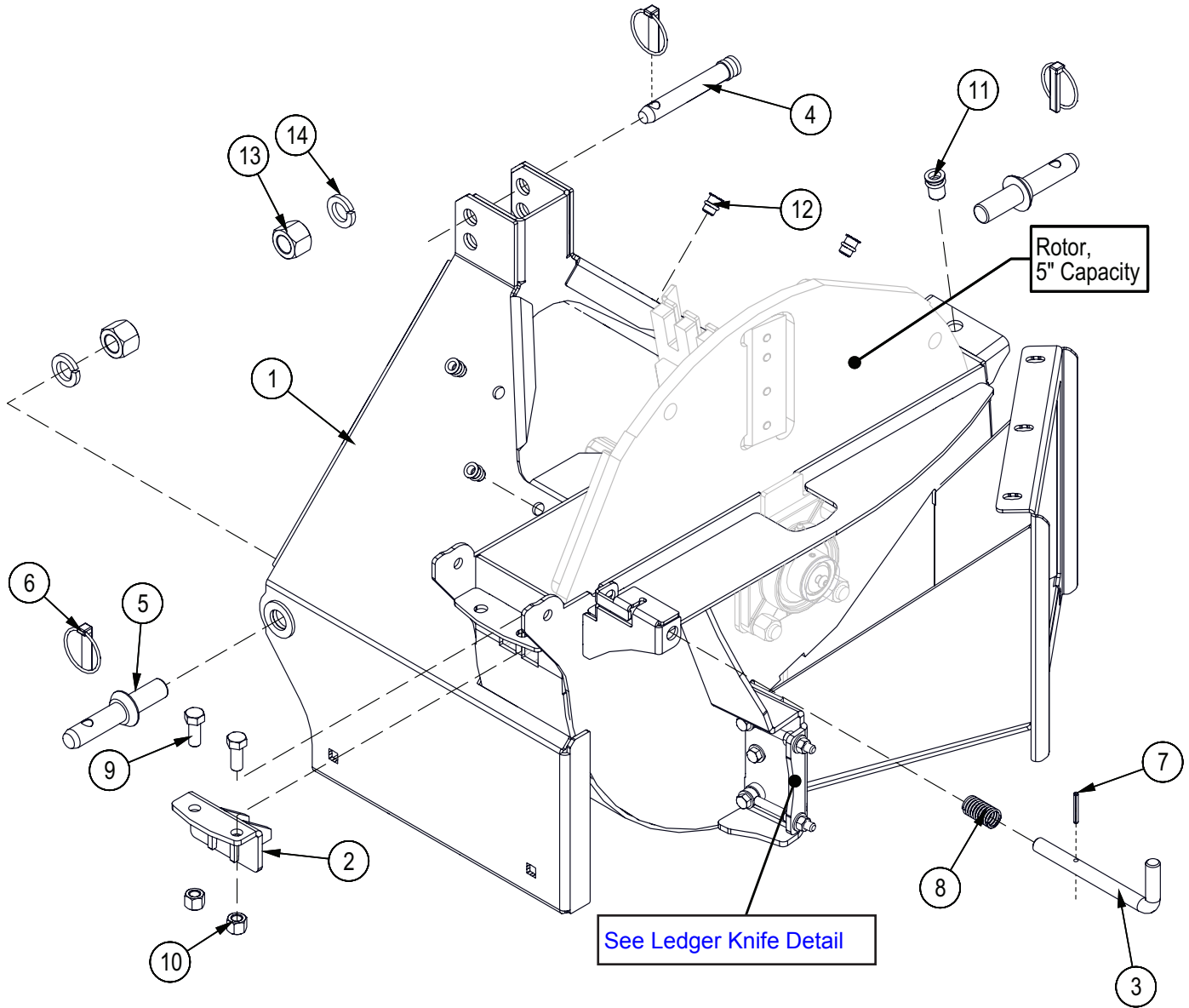
Rotor Assembly



Rotor shown assembled in Lower Rotor Housing

Item No.	Part No.	Description	Qty
1	1011M103	Knife, 4" Rotor	4
2	1021S102	Rotation Indicator Cover	1
3	1024L107	Bearing Plate, BX52	2
4	1024W101	Rotor, 5" Capacity	1
5	Z25204	4-Bolt Flange Bearing, 1-1/2" Bore	2
6	Z29201	Grease Fitting, 1/8NPT	2
7	Z44504	#5 Global PTO Shaft M10 Shear	1
8	Z71373G8	Hex Bolt, 3/8NF x 3/4 G8	16
9	Z72261G8	Hex Lock Nut, 5/8NC G8	8
10	Z74122	Set Screw, 5/16NF x 3/8"	4
11	Z75351	BHCS, 5/16NF x 3/4"	1
12	Z76261G8	Carriage Bolt, 5/8NC x 2" G8	8
13	Z92310	Chain 3/16" x 12" double hook ends	1

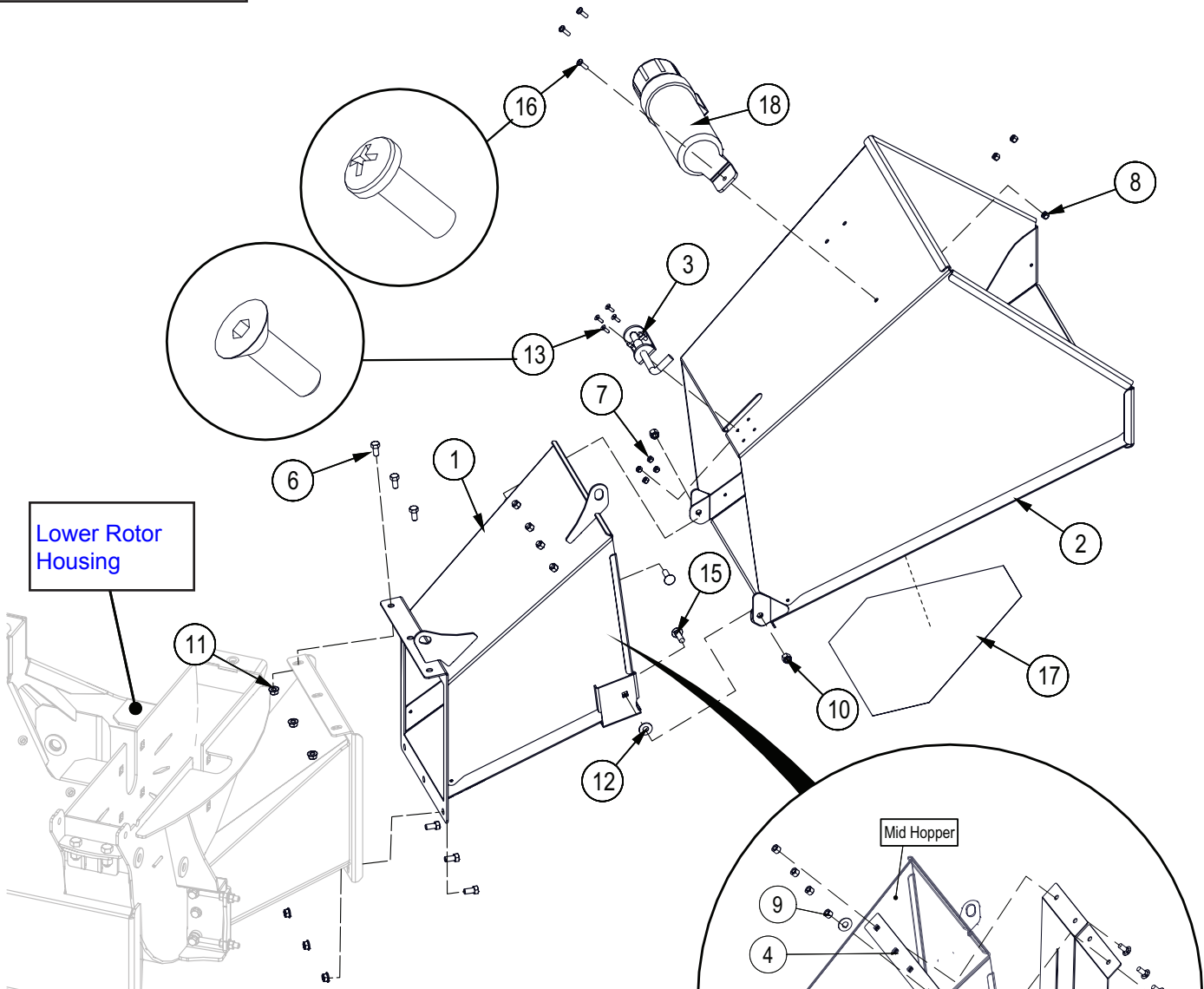
Lower Rotor Housing



ECN0413

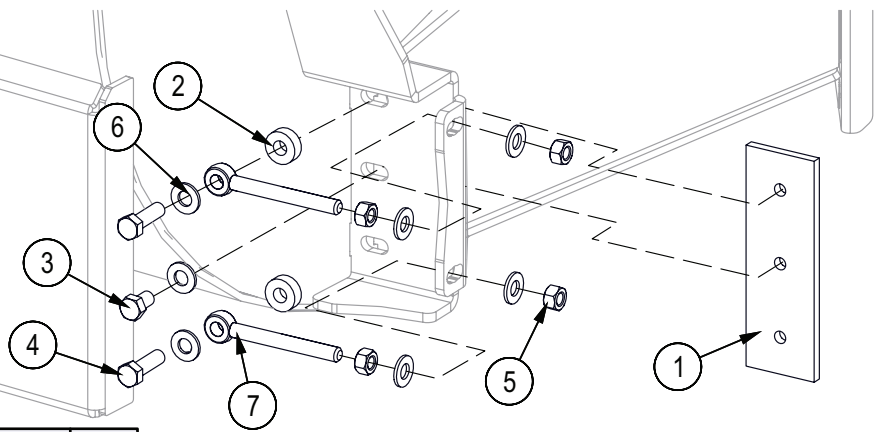
Item No.	Part No.	Description	Qty
1	1024W102	Lower Rotor Housing	1
2	1024W103	Twig Breaker, BX52	1
3	1026M102	L Handled Plunger, Compact	1
4	Z11122	Toplink Pin, 3/4" x 3-7/8"	1
5	Z11431	Implement Pin, 7/8" x 1-3/4" x 7/8NF	2
6	Z12140	Lynch Pin, 7/16"	3
7	Z14151	Roll Pin, 3/16" x 1-1/2"	1
8	Z32305	Comp Spring, 0.845" OD x 3-1/2" x 0.085"	1
9	Z71512	Hex Bolt, 1/2NC x 1-1/4"	2
10	Z72251	Hex Lock Nut, 1/2NC	2
11	Z72960-1	Rivet Nut, 1/2NC x 200	1
12	Z77940	Rivet Nut, M10x1.5 x 313	4
13	Z72282	Hex Lock Nut, 7/8NF	2
14	Z73381	Split Lock Washer, 7/8"	2

Feed Chute



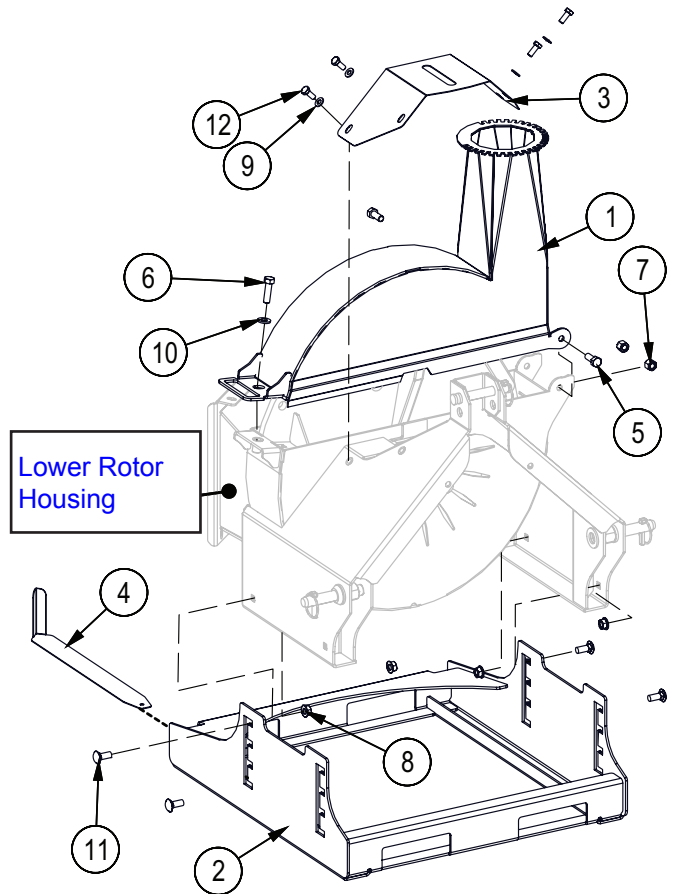
Item No.	Part No.	Description	Qty
1	1024W110	Mid Hopper	1
2	1024W111	Folding Hopper	1
3	Z18207	Spring Latch Pin 1/2 x 1" Stroke	1
4	1024L156	Flap Trap Plate	1
5	1024S108	Hopper Flap	2
6	Z71307	Hex Bolt, 3/8NC x 3/4"	4
7	Z72204	Hex Lock Nut, #10NF	4
8	Z72211	Hex Lock Nut, 1/4NC	3
9	Z72221	Hex Lock Nut, 5/16NC	4
10	Z72231	Hex Lock Nut, 3/8NC	2
11	Z72531	Serrated Flange Locknut, 3/8NC	3
12	Z73233	PTFE Washer, 3/8" x 1/16"	2
13	Z75204	FHCS, #10NF x 5/8"	4
14	Z76221	Carriage Bolt, 5/16NC x 3/4"	4
15	Z76232	Carriage Bolt, 3/8NC x 1-1/4"	2
16	Z78301	Machine Screw, 1/4NC x 3/4"	3
17	Z94601	Decal, SMV	1
18	Z96503	Manual Tube 3-1/2 Short	1

Ledger Knife Detail



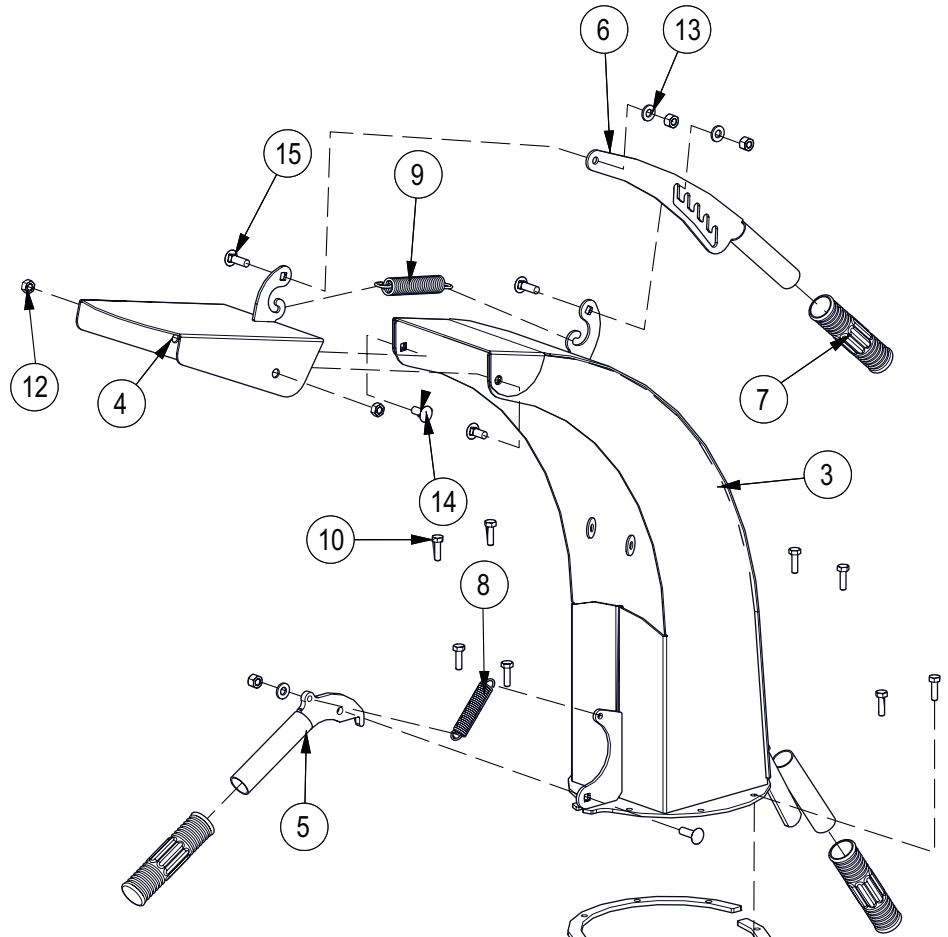
Item No.	Part No.	Description	Qty
1	1011M104	Knife, 4" Ledger	1
2	1024L124	Ledger Washer	2
3	Z71372G8	Hex Bolt, 3/8NF x 5/8" G8	1
4	Z71379G8	Hex Bolt, 3/8NF x 1-1/4" G8	2
5	Z72131	Hex Nut, 3/8NC	4
6	Z73131	SAE Washer, 3/8"	7
7	Z76534	Rod End, 3/8NC x 3-1/2"	2

Upper Rotor Housing



Item No.	Part No.	Description	Qty
1	1024W104	Upper Rotor Housing	1
2	1024W105	Adjustable Ski Base	1
3	1024L154	PTO Guard	1
4	1024L161	Gauge, Ledger Setting	1
5	Z71512	Hex Bolt, 1/2NC x 1-1/4"	2
6	Z71517	Hex Bolt, 1/2NC x 1-3/4"	1
7	Z72251	Hex Lock Nut, 1/2NC	2
8	Z72551	Serrated Flange Locknut, 1/2NC	4
9	Z73131	SAE Washer, 3/8"	4
10	Z73151	SAE Washer, 1/2"	1
11	Z76259	Carriage Bolt, 1/2NC x 1-1/4"	4
12	Z77162	Hex Bolt, M10x1.5 x 25mm	4

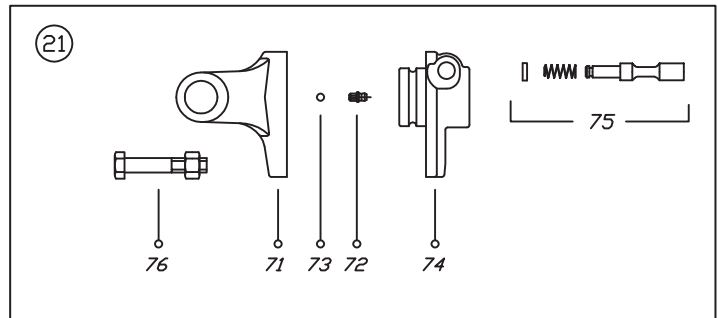
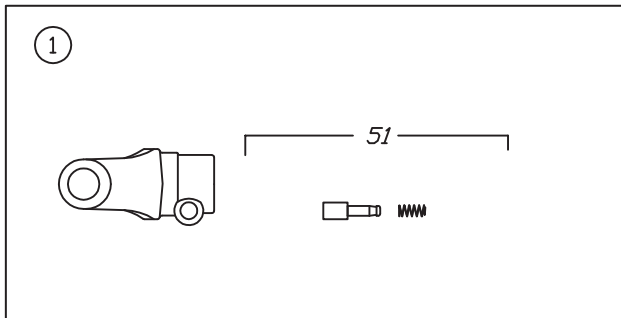
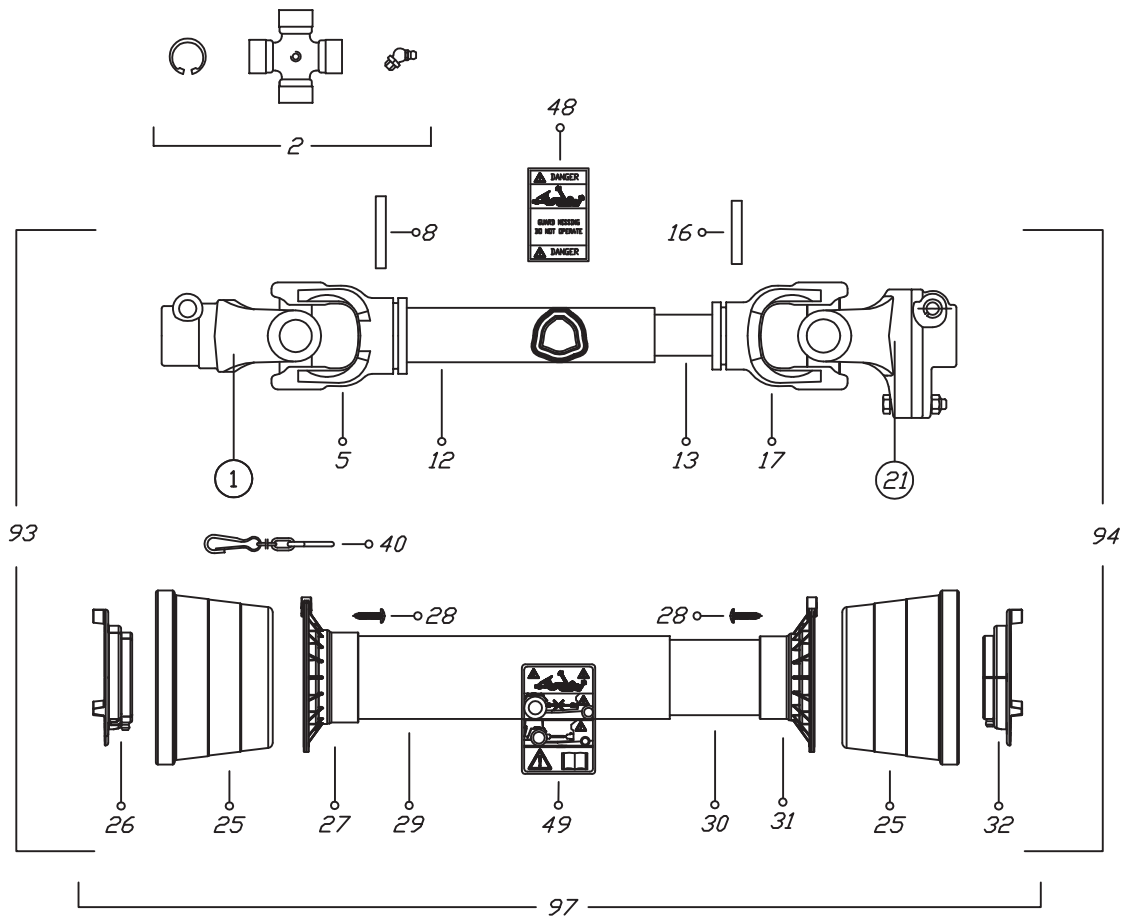
Discharge Chute



Upper Rotor Housing

Item No.	Part No.	Description	Qty
1	1024L133	Hood Capture Ring	2
2	1024L134	Spacer Ring	2
3	1024W106	Discharge Chute	1
4	1024W107	Discharge Deflector	1
5	1024W108	Discharge Latch	1
6	1024W109	Discharge Adjustor	1
7	Z19321	Grip, 1" x 5"	3
8	Z31305	Ext Spring, 5/8" OD x 3" x 0.08"	1
9	Z31401	Ext Spring, 3/4" OD x 4" x 0.105"	1
10	Z71108	Hex Bolt, 1/4NC x 7/8"	8
11	Z72211	Hex Lock Nut, 1/4NC	8
12	Z72221	Hex Lock Nut, 5/164NC	2
13	Z73122	SAE Washer, 5/16"	3
14	Z76221	Carriage Bolt, 5/16NC x 0.75"	2
5	Z76225	Carriage Bolt, 5/16NC x 1"	3

PTO Shaft Assembly



00112

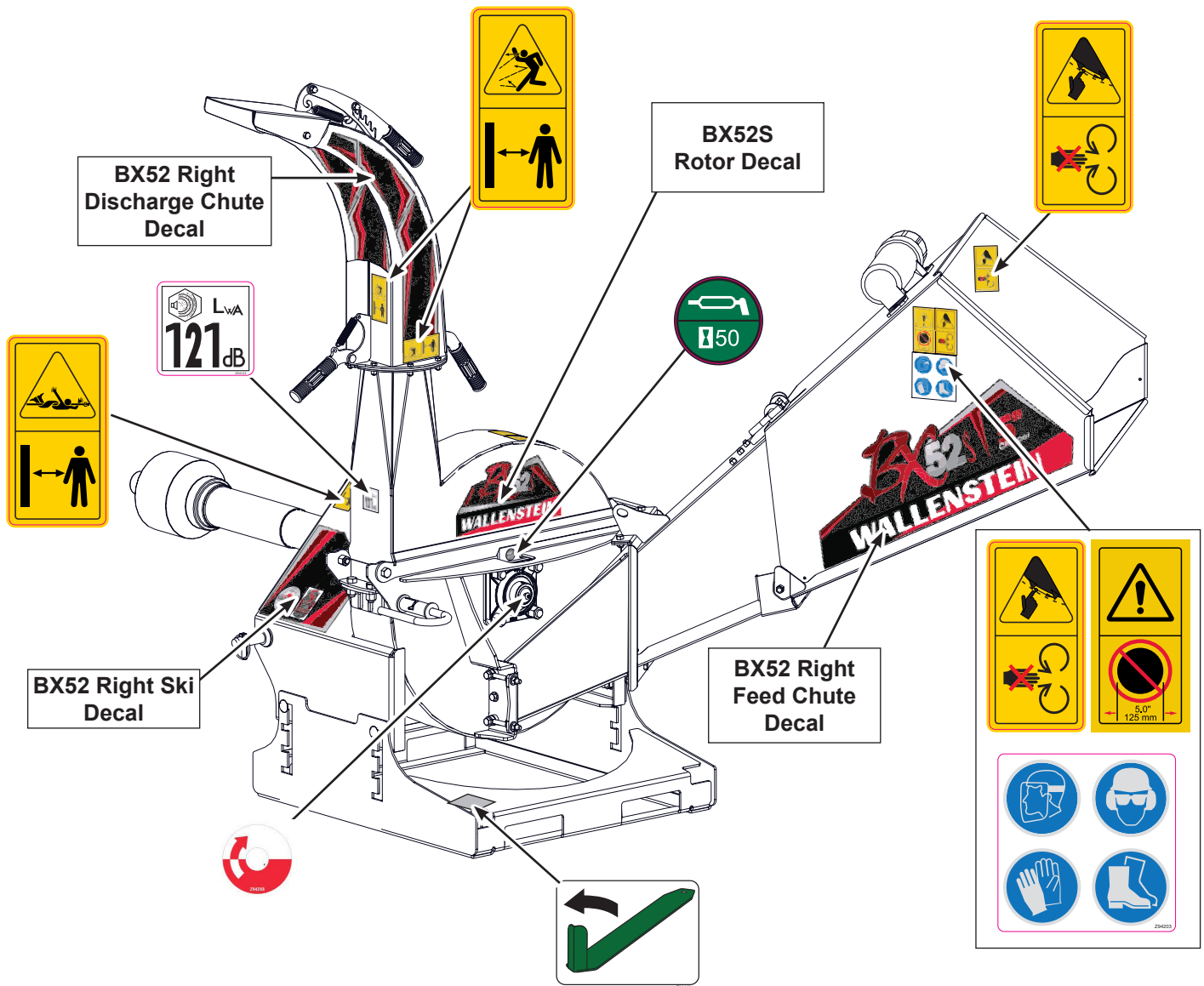
Binacchi SPARE PARTS LIST : B5D056US098001			
POS.	DESCRIPTION	Q.	Part #
01	YOKE	1	0800503
02	CROSS JOURNAL ASS.	2	08205
05	OUTER TUBE YOKE	1	08005021
08	FLEXIBLE PIN	1	098701075
12	CM. 100 CARDAN TUBE(*)	1	09881523100
13	CM. 100 CARDAN TUBE(*)	1	09881454100
16	FLEXIBLE PIN	1	0987001065
17	INNER TUBE YOKE	1	08005011
21	SHEAR BOLT YOKE	1	08805A604633
25	CONE SHIELD BELL 05-06	2	021906C001
26	OUTER BEARING 05	1	025505C001
27	OUTER BASE CONE 05-06	1	025406C001
28	SCREW	6	0998052242
29	OUTER SAFETY TUBE	1	0988981NB5056
30	INNER SAFETY TUBE	1	0988975NB5056

Binacchi SPARE PARTS LIST : B5D056US098001			
POS.	DESCRIPTION	Q.	Part #
31	INNER BASE CONE 05-06	1	025406C002
32	INNER BEARING 05	1	025505C002
40	CHAIN	1	0252000001
48	LABEL DANGER OUTER DRIVE TUBE	1	09872006
49	EXTERNAL SHIELD LABEL	1	09872003
51	COMPLETE PUSH BUTTTON	1	0986014047
71	YOKE FOR LB5	1	08896905
72	GREASE NIPPLE	1	0984010150
73	STEEL BALL	23	098680104
74	HUB	1	088965A60
75	PUSH PIN SET	1	0986014075
76	SHEAR BOLT AND NUT M10 x 1.5 x 55 10.9	1	Z19407 (Package of 5)
93	OUTER HALF SHAFT	1	B5056US2
94	INNER HALF SHAFT	1	B5056US1098001
97	SAFETY GUARD	1	083US05056

Decal Layout – Left Side View

IMPORTANT! If parts are replaced that have safety signs on them, new signs must be applied. Safety signs must always be replaced if they become damaged, are removed, or become illegible.

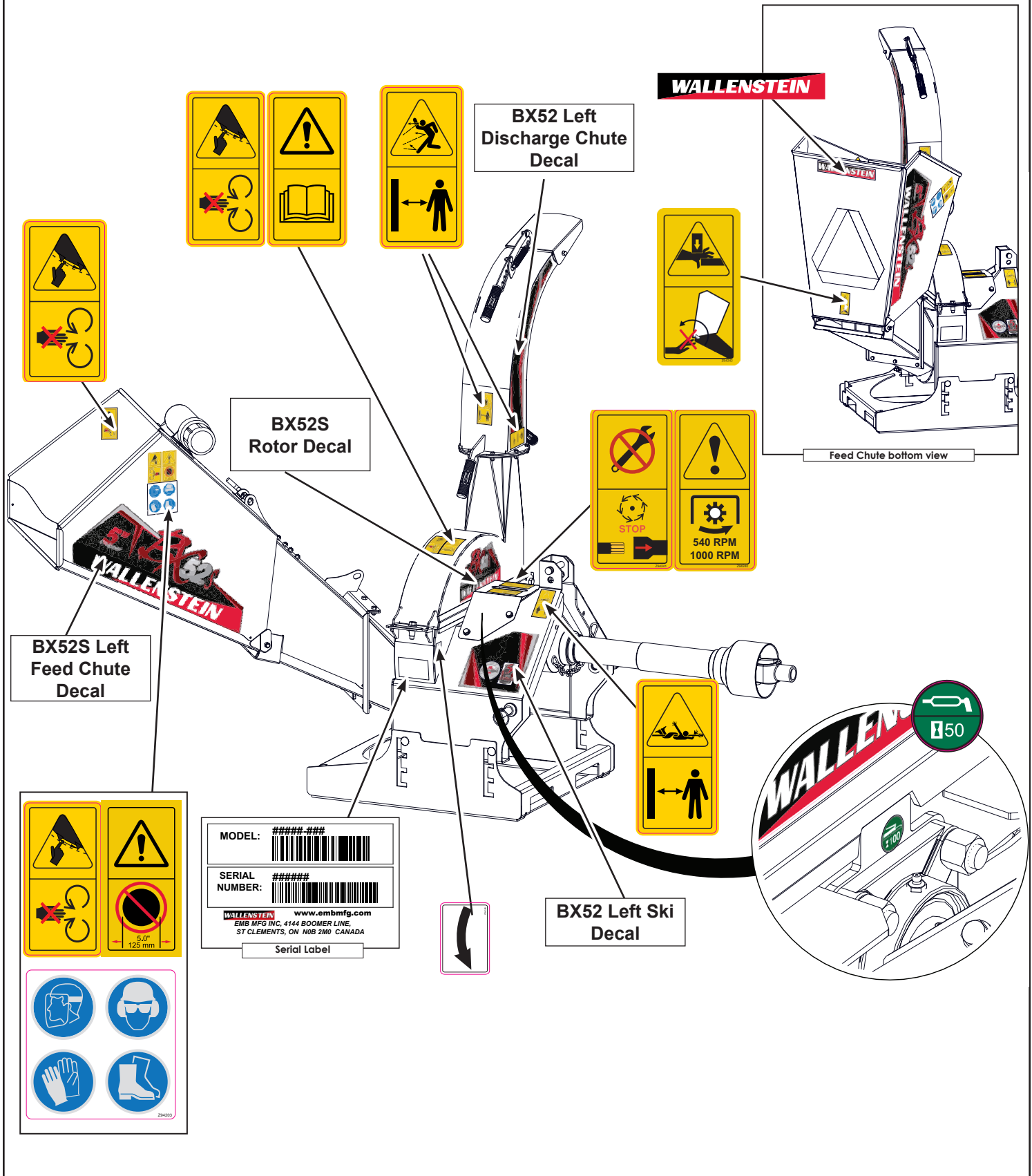
Safety signs are included in the product decal kit available from your authorized dealer. Decals are not available separately.



Decal Layout – Right Side View

IMPORTANT! If parts are replaced that have safety signs on them, new signs must be applied. Safety signs must always be replaced if they become damaged, are removed, or become illegible.

Safety signs are included in the product decal kit available from your authorized dealer. Decals are not available separately.




Bolt Torque

Checking Bolt Torque

The tables shown give correct torque values for various bolts and capscrews. Tighten all bolts to the torque values specified in the table, unless indicated otherwise. Check tightness of bolts periodically.

IMPORTANT! If replacing hardware, use fasteners of the same grade.

IMPORTANT! Torque figures indicated in the table are for non-greased or non-oiled threads. Do not grease or oil threads unless indicated otherwise. When using a thread locker, increase torque values by 5%.

 **NOTE:** Bolt grades are identified by their head markings.

Imperial Bolt Torque Specifications

Bolt Diameter	Torque Value					
	SAE Gr. 2		SAE Gr. 5		SAE Gr. 8	
	lbf•ft	N•m	lbf•ft	N•m	lbf•ft	N•m
1/4"	6	8	9	12	12	17
5/16"	10	13	19	25	27	36
3/8"	20	27	33	45	45	63
7/16"	30	41	53	72	75	100
1/2"	45	61	80	110	115	155
9/16"	60	95	115	155	165	220
5/8"	95	128	160	215	220	305
3/4"	165	225	290	390	400	540
7/8"	170	230	420	570	650	880
1"	225	345	630	850	970	1320



SAE Gr. 2



SAE Gr. 5



SAE Gr. 8

Metric Bolt Torque Specifications

Bolt Diameter	Torque Value			
	Gr. 8.8		Gr. 10.9	
	lbf•ft	N•m	lbf•ft	N•m
M3	0.4	0.5	1.3	1.8
M4	2.2	3	3.3	4.5
M6	7	10	11	15
M8	18	25	26	35
M10	37	50	52	70
M12	66	90	92	125
M16	166	225	229	310
M20	321	435	450	610
M30	1,103	1 495	1,550	2 100
M36	1,917	2 600	2,700	3 675



8.8



10.9