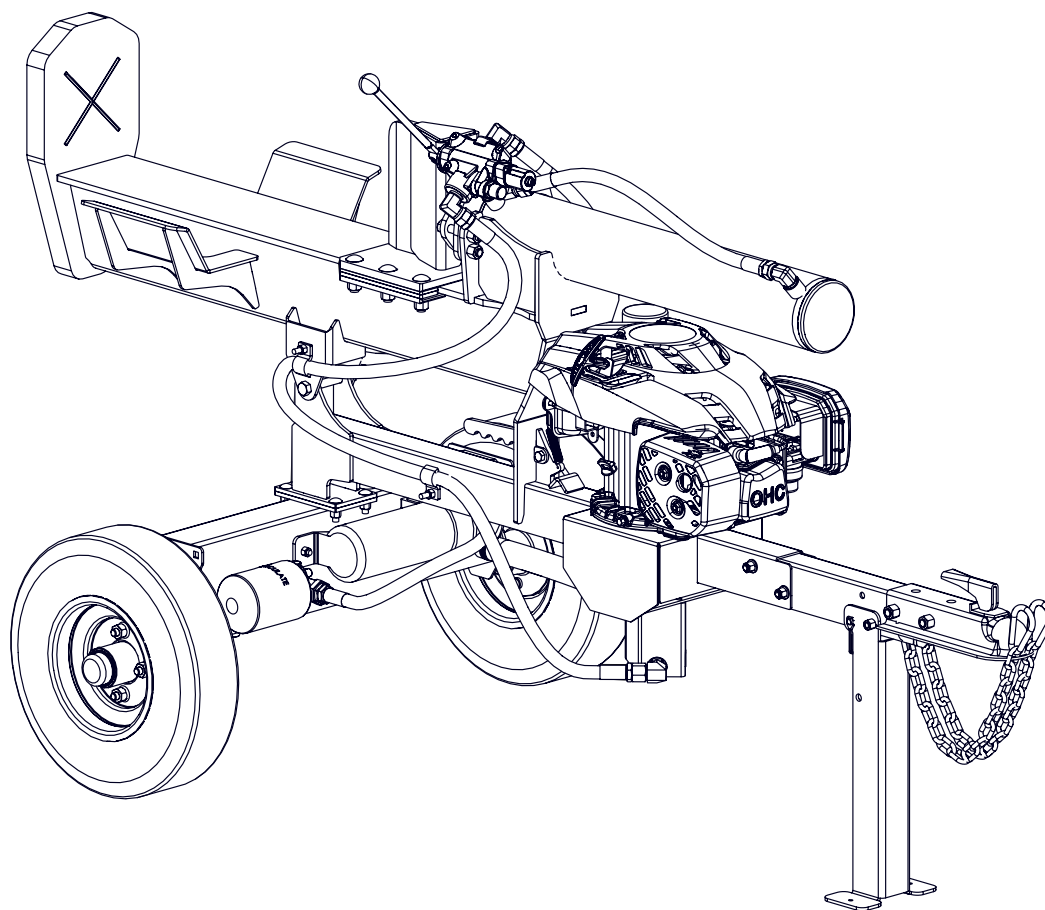




EMB Manufacturing Inc.  
4144 Boomer Line · St. Clements, On · N0B 2M0 · Canada  
Ph: (519) 699-9283 · Fax: (519) 699-4146  
www.wallensteinequipment.com

# WE230 Trailer Log Splitter Parts Manual

Starting with S/N's 150381 and on



Refer to the operators  
manual for safe  
operation and  
maintenance

## Foreword

EMB Mfg. has prepared this parts manual to assist customers in ordering quality OEM replacement parts.

Proper and regular service and replacing old, worn or broken parts with the correct OEM parts are essential to prolonging the life of your EMB product. Please refer to this manual before ordering any replacement parts.

All information contained in this parts manual is based on the latest product specification available at the time of printing this manual. If your product differs from the specifications contained within this manual contact EMB Mfg. for information.

EMB reserves the right to alter specifications on their products at any time.

Reproduction of this parts manual of any kind is prohibited without prior written permission from EMB Mfg.

For parts and information please contact your dealer. If your dealer is no longer available please go to our website: <http://www.wallensteinequipment.com> and click on "FIND A DEALER NEAR YOU" for information on a local dealer.

## Table of Contents Page

<b>Bolt Torque.....</b>	<b>4</b>
<b>Hydraulic Fitting Torque .....</b>	<b>5</b>
<b>Wheel Lug Torque .....</b>	<b>5</b>
<b>Main Frame Assembly .....</b>	<b>6</b>
<b>Cylinder Assembly .....</b>	<b>7</b>
<b>Hitch and Tongue Assembly .....</b>	<b>8</b>
<b>Tank Assembly.....</b>	<b>9</b>
<b>Hub Assembly .....</b>	<b>10</b>
<b>Engine and Pump Assembly .....</b>	<b>10</b>
<b>Cylinder Assembly .....</b>	<b>11</b>
<b>Valve Assembly.....</b>	<b>11</b>
<b>Z56209 Service Kits .....</b>	<b>12</b>
<b>Hydraulic Hose List .....</b>	<b>12</b>
<b>Hydraulic Schematic.....</b>	<b>13</b>
<b>Label Layout.....</b>	<b>14</b>
<b>Accessories.....</b>	<b>15</b>

Maintenance should be performed by  
trained personnel only.



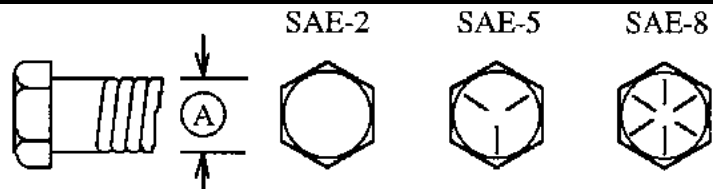
Refer to the operators  
manual for safe  
operation and  
maintenance

**Bolt Torque**

**CHECKING BOLT TORQUE**

The tables shown below give correct torque values for various bolts and capscrews. Tighten all bolts to the torques specified in chart unless otherwise noted. Check tightness of bolts periodically, using bolt torque chart as a guide. Replace hardware with the same strength bolt.

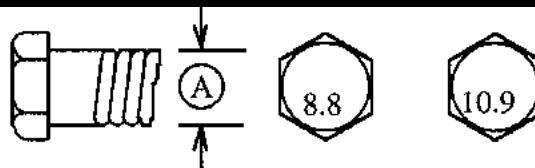
ENGLISH TORQUE SPECIFICATIONS						
Bolt Diameter "A"	Bolt Torque*					
	SAE 2 (N.m) (lb-ft)		SAE 5 (N.m) (lb-ft)		SAE 8 (N.m) (lb-ft)	
1/4"	8	6	12	9	17	12
5/16"	13	10	25	19	36	27
3/8"	27	20	45	33	63	45
7/16"	41	30	72	53	100	75
1/2"	61	45	110	80	155	115
9/16"	95	60	155	115	220	165
5/8"	128	95	215	160	305	220
3/4"	225	165	390	290	540	400
7/8"	230	170	570	420	880	650
1"	345	225	850	630	1320	970



Torque figures indicated above are valid for non-greased or non-oiled threads and heads unless otherwise specified. Therefore, do not grease or oil bolts or capscrews unless otherwise specified in this manual. When using locking elements, increase torque values by 5%.

\* Torque value for bolts and capscrews are identified by their head markings.

METRIC TORQUE SPECIFICATIONS				
Bolt Diameter "A"	Bolt Torque*			
	8.8 (N.m) (lb-ft)		10.9 (N.m) (lb-ft)	
M3	0.5	0.4	1.8	1.3
M4	3	2.2	4.5	3.3
M5	6	4	9	7
M6	10	7	15	11
M8	25	18	35	26
M10	50	37	70	52
M12	90	66	125	92
M14	140	103	200	148
M16	225	166	310	229
M20	435	321	610	450
M24	750	553	1050	774
M30	1495	1103	2100	1550
M36	2600	1917	3675	2710



### Hydraulic Fitting Torque

#### Tightening Flare Type Tube Fittings \*

1. Check flare and flare seat for defects that might cause leakage.
2. Align tube with fitting before tightening.
3. Lubricate connection and hand tighten swivel nut until snug.
4. To prevent twisting the tube(s), use two wrenches. Place one wrench on the connector body and with the second tighten the swivel nut to the torque shown.

Tube Size OD (in.)	Nut Size Across Flats (in.)	Torque Value*		Recommended Turns To Tighten (After Finger Tightening)	
		(N.m)	(lb-ft)	(Flats)	(Turn)
3/16	7/16	8	6	1	1/6
1/4	9/16	12	9	1	1/6
5/16	5/8	16	12	1	1/6
<b>3/8</b>	<b>11/16</b>	<b>24</b>	<b>18</b>	<b>1</b>	<b>1/6</b>
1/2	7/8	46	34	1	1/6
5/8	1	62	46	1	1/6
3/4	1-1/4	102	75	3/4	1/8
7/8	1-3/8	122	90	3/4	1/8

The torque values shown are based on lubricated connections as in reassembly.

### Wheel Lug Torque

It is extremely important safety procedure to apply and maintain proper wheel mounting torque on your trailer axle. Torque wrenches are the best method to assure the proper amount of torque is being applied to a fastener.

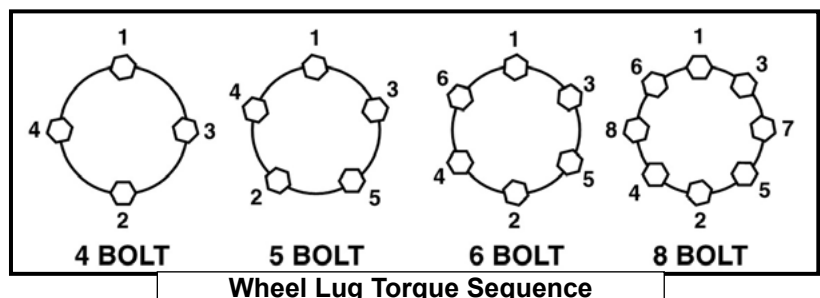
Wheel lugs should be torqued before first road use and after each wheel removal. Check and re torque after the first 16Km (10 miles), 40Km (25 miles), and again at 80Km (50 miles). Check periodically thereafter.

Note: Wheel lugs must be applied and maintained at the proper torque levels to prevent loose wheels, broken studs, and possible dangerous separation of wheels from your axle.

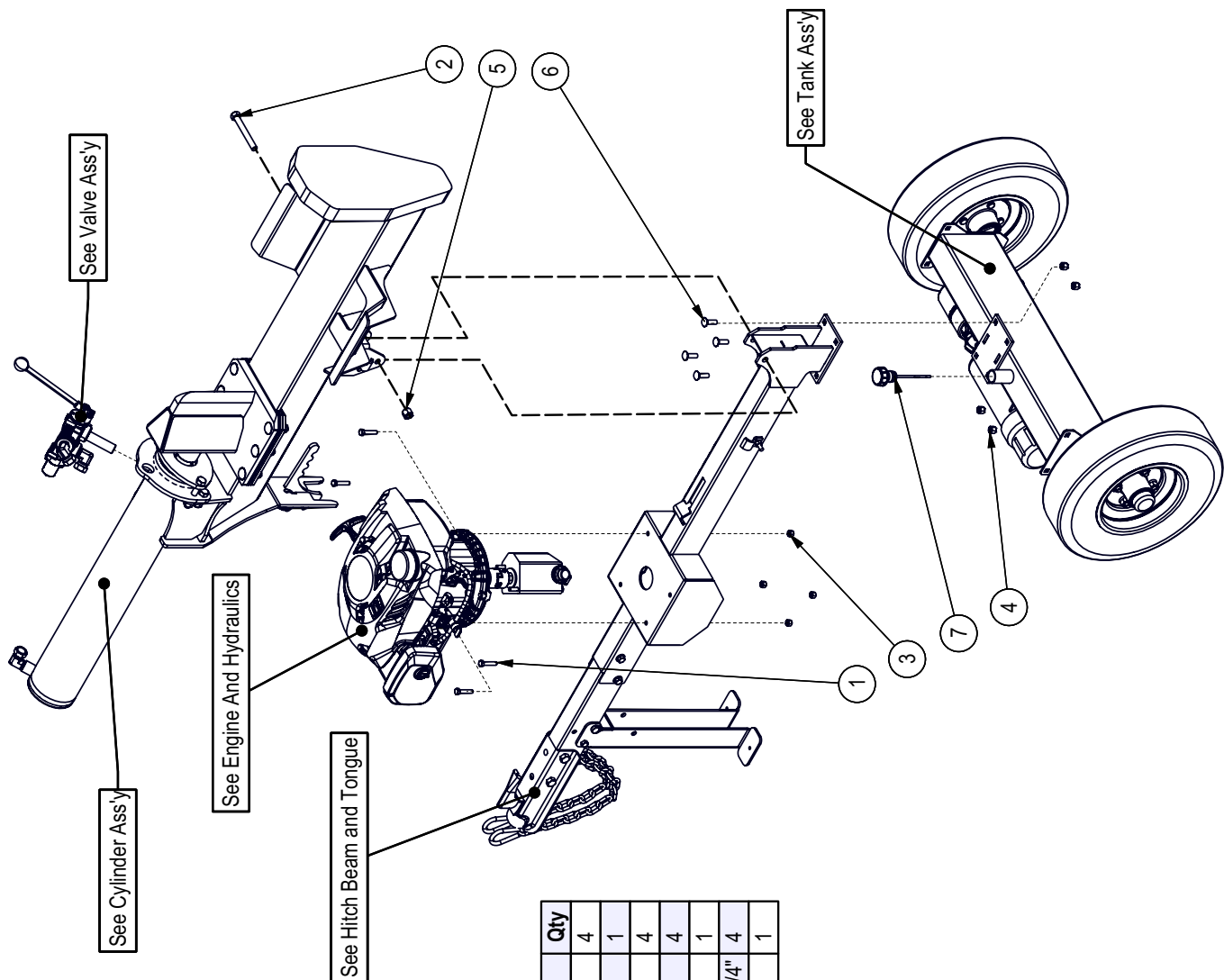
- Start all lugs by hand to prevent cross threading.
- Tighten lugs in sequence, per wheel lug torque sequence chart.
- The tightening of the fasteners should be done in stages. Following the recommended sequence, tighten fasteners per wheel torque requirements chart.

#### Wheel Torque Requirements

Wheel Size	Torque Unit	1st Stage	2nd Stage	3rd Stage
8"	ft-lbs	12 - 20	30 - 35	45 - 55
	Nm	16 - 26	39 - 45.5	58.5 - 71.5
12"	ft-lbs	20 - 25	35 - 40	50 - 60
	Nm	26 - 32.5	45.5 - 52	65 - 78
13"	ft-lbs	20 - 25	35 - 40	50 - 60
	Nm	26 - 32.5	45.5 - 52	65 - 78
14"	ft-lbs	20 - 25	50 - 60	90 - 120
	Nm	26 - 32.5	65 - 78	117 - 156
15"	ft-lbs	20 - 25	50 - 60	90 - 120
	Nm	26 - 32.5	65 - 78	117 - 156
16"	ft-lbs	20 - 25	50 - 60	90 - 120
	Nm	26 - 32.5	65 - 78	117 - 156



**Main Frame Assembly**

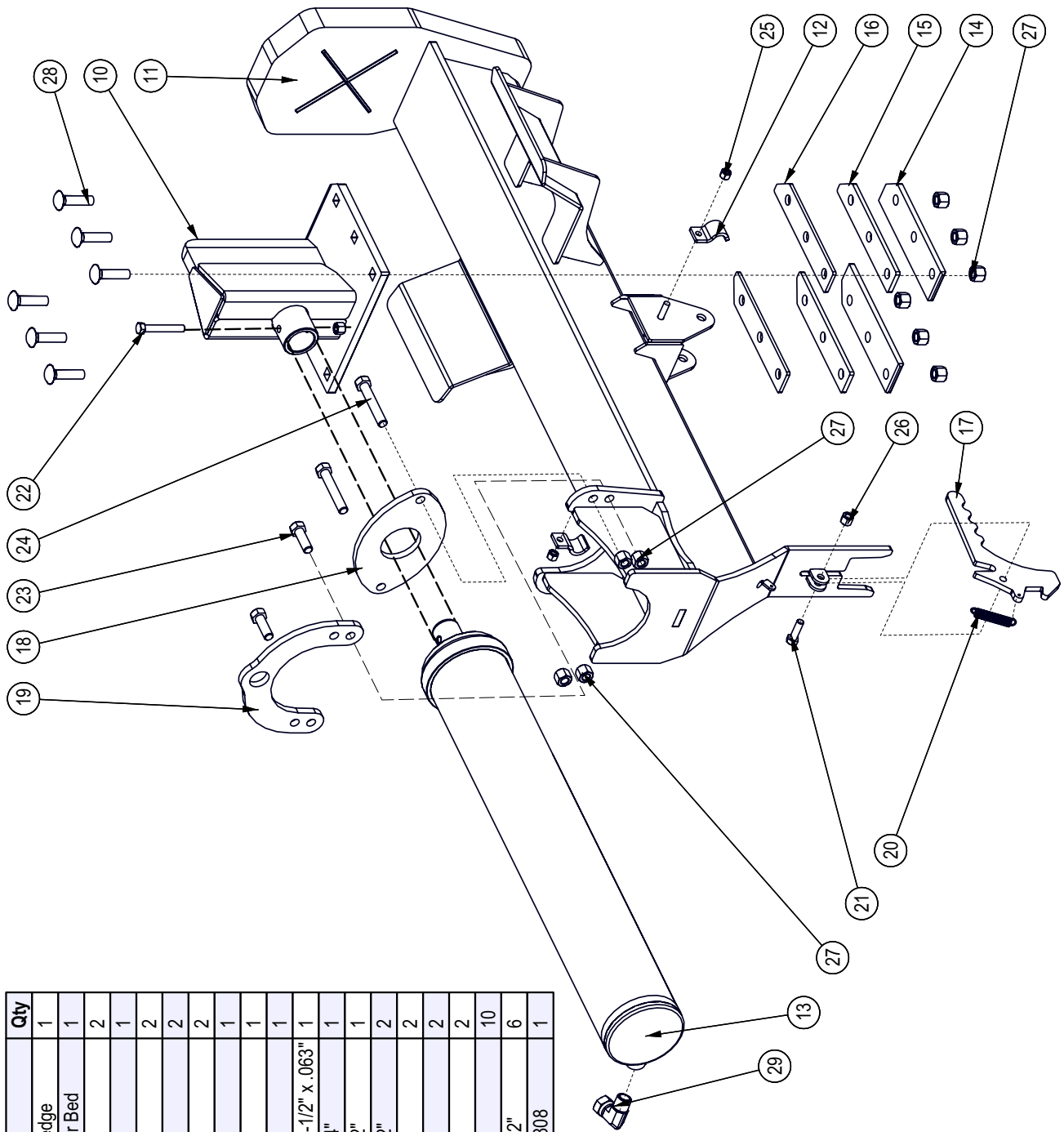


On Models with Hydraulic Tank Drain:  
#Z51192 Socket Plug, MP 08

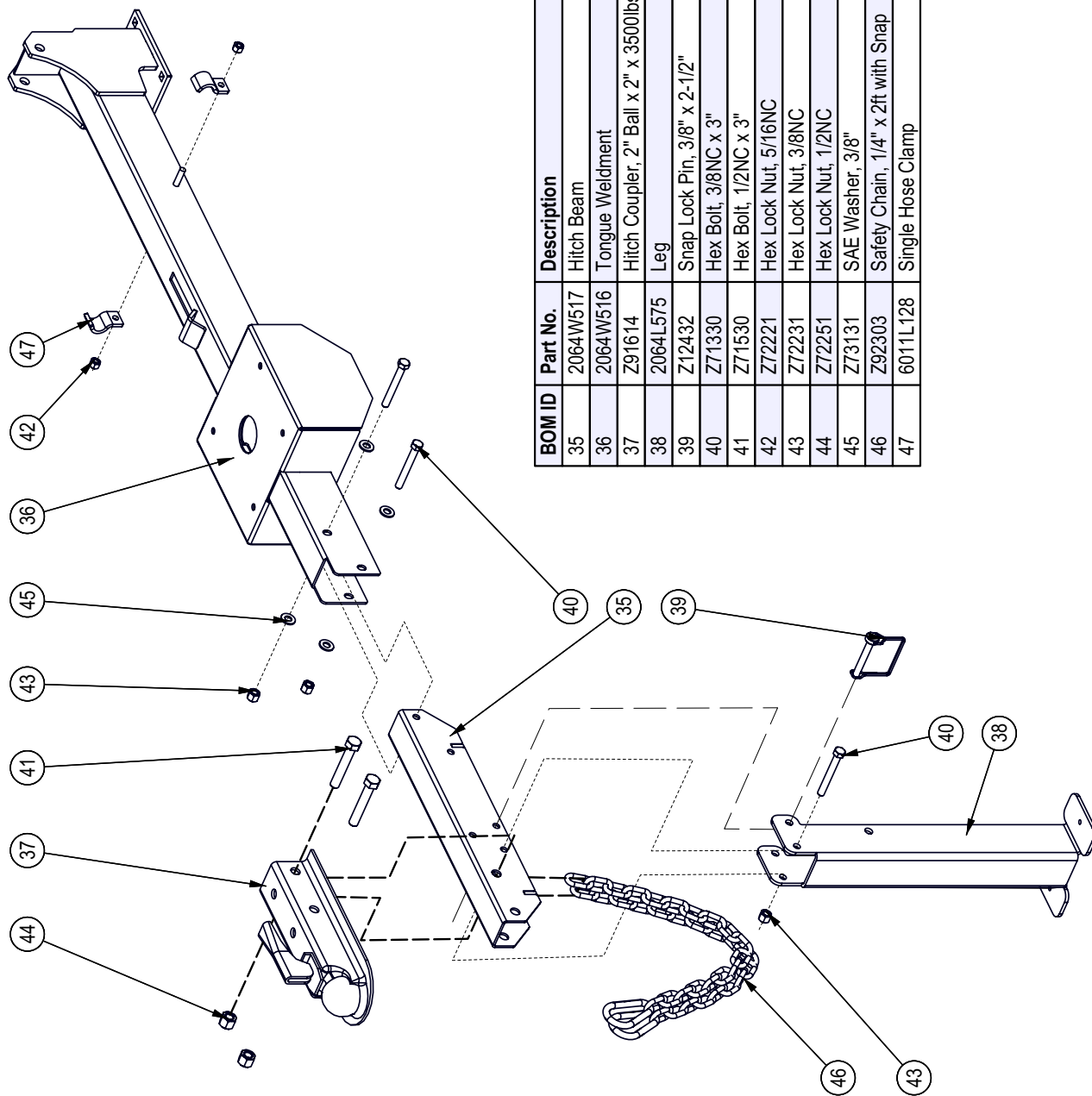
BOM ID	Part No.	Description	Qty
1	Z71215	Hex Bolt, 5/16NC x 1-1/2"	4
2	Z71540	Hex Bolt, 1/2NC x 4"	1
3	Z72221	Hex Lock Nut, 5/16NC	4
4	Z72231	Hex Lock Nut, 3/8NC	4
5	Z72251	Hex Lock Nut, 1/2NC	1
6	Z76232	Carriage Bolt, 3/8NC x 1-1/4"	4
7	Z55402	Vented Plug Dipstick x 5"	1

**Cylinder Assembly**

BOM ID	Part No.	Description	Qty
10	2064W503	Weldment, Splitting Wedge	1
11	2093W302	Weldment, Main Splitter Bed	1
12	6011L128	Single Hose Clamp	2
13	2011C101	Cylinder, 4 x 24 x 1-1/2	1
14	2064L509	Gibb	2
15	2064L511	Spacer, Gibb	2
16	2064L512	Thin Spacer, Gibb	2
17	2064L524	Latch	1
18	2064L563	Gland Clamp Plate	1
19	2064L564	Cylinder Saddle	1
20	Z31304	Ext Spring, 1/2" OD x 2-1/2" x .063"	1
21	Z71312	Hex Bolt, 3/8NC x 1-1/4"	1
22	Z71325	Hex Bolt, 3/8NC x 2-1/2"	1
23	Z71515	Hex Bolt, 1/2NC x 1-1/2"	2
24	Z71530	Hex Bolt, 1/2NC x 3"	2
25	Z72221	Hex Lock Nut, 5/16NC	2
26	Z72231	Hex Lock Nut, 3/8NC	2
27	Z72251	Hex Lock Nut, 1/2NC	10
28	Z76255	Carriage Bolt, 1/2NC x 2"	6
29	Z51331	Elbow 90, MP x FPX 0808	1



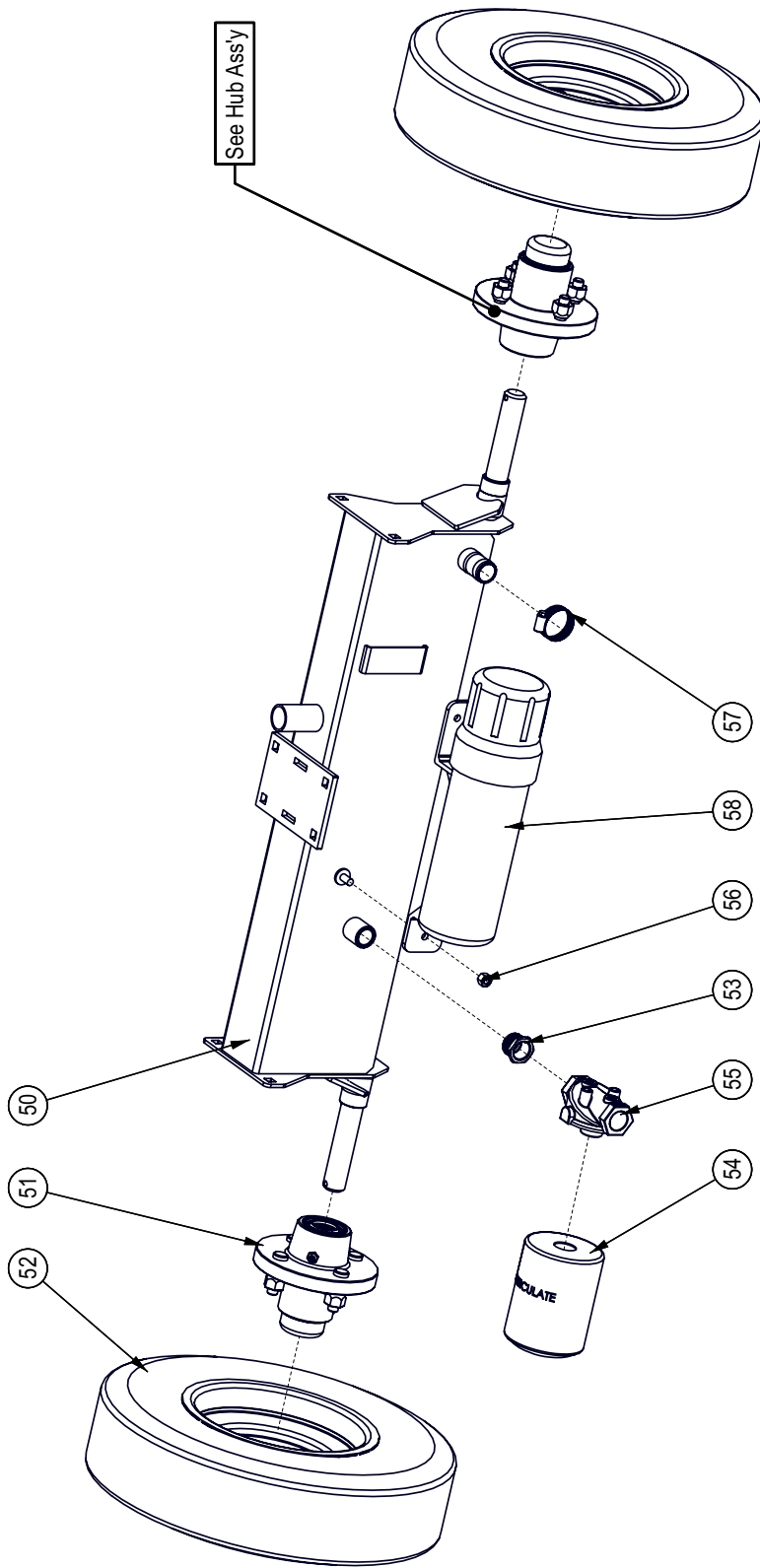
Hitch and Tongue Assembly



BOM ID	Part No.	Description	Qty
35	2064W517	Hitch Beam	1
36	2064W516	Tongue Weldment	1
37	Z91614	Hitch Coupler, 2" Ball x 2" x 3500lbs	1
38	2064L575	Leg	1
39	Z12432	Snap Lock Pin, 3/8" x 2-1/2"	1
40	Z71330	Hex Bolt, 3/8NC x 3"	3
41	Z71530	Hex Bolt, 1/2NC x 3"	2
42	Z72221	Hex Lock Nut, 5/16NC	2
43	Z72231	Hex Lock Nut, 3/8NC	3
44	Z72251	Hex Lock Nut, 1/2NC	2
45	Z73131	SAE Washer, 3/8"	4
46	Z92303	Safety Chain, 1/4" x 2ft with Snap	2
47	6011L128	Single Hose Clamp	2



**Tank Assembly**

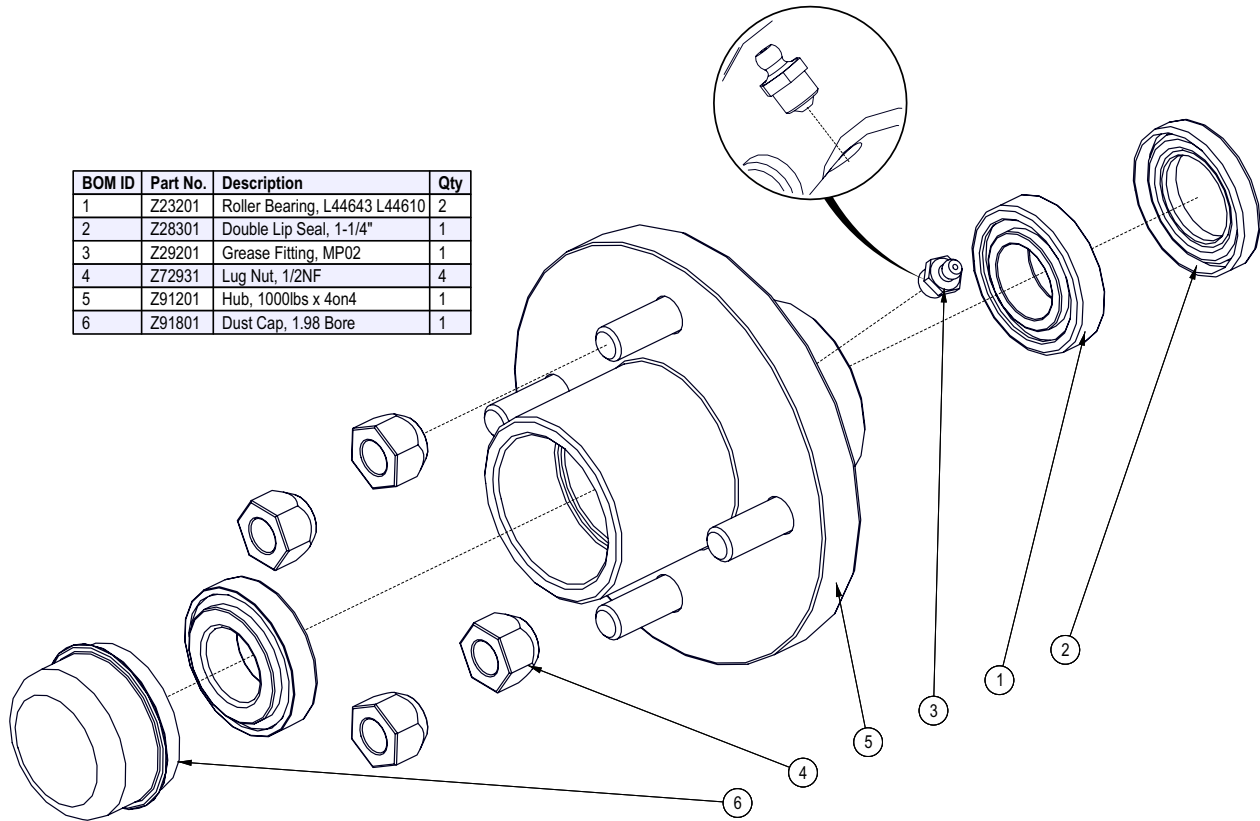


BOM ID	Part No.	Description	Qty
55	Z55302	Filter Cap, MP12 x FP12	1
56	Z72221	Hex Lock Nut, 5/16NC	1
57	Z79401	Hose Clamp, SAE #16 (1-1/2")	1
58	Z96503	Manual Tube, 3-1/2" Short	1

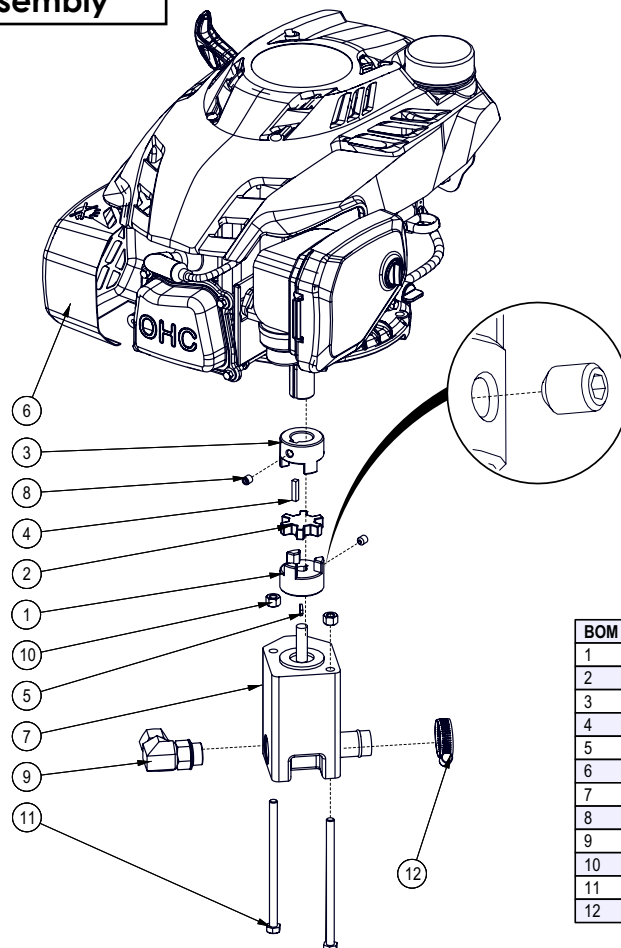
BOM ID	Part No.	Description	Qty
50	2064W502	Tank Weldment	1
51	Z91202	Idle Hub Assy, 1000lbs x 4on4" x 1"	2
52	Z91301	4.80-8 LRB SportTrail 4on4"	2
53	Z51221	Straight, MP x FP 1208	1
54	Z55301	Particulate Filter, FP12	1

### Hub Assembly

BOM ID	Part No.	Description	Qty
1	Z23201	Roller Bearing, L44643 L44610	2
2	Z28301	Double Lip Seal, 1-1/4"	1
3	Z29201	Grease Fitting, MP02	1
4	Z72931	Lug Nut, 1/2NF	4
5	Z91201	Hub, 1000lbs x 4on4	1
6	Z91801	Dust Cap, 1.98 Bore	1

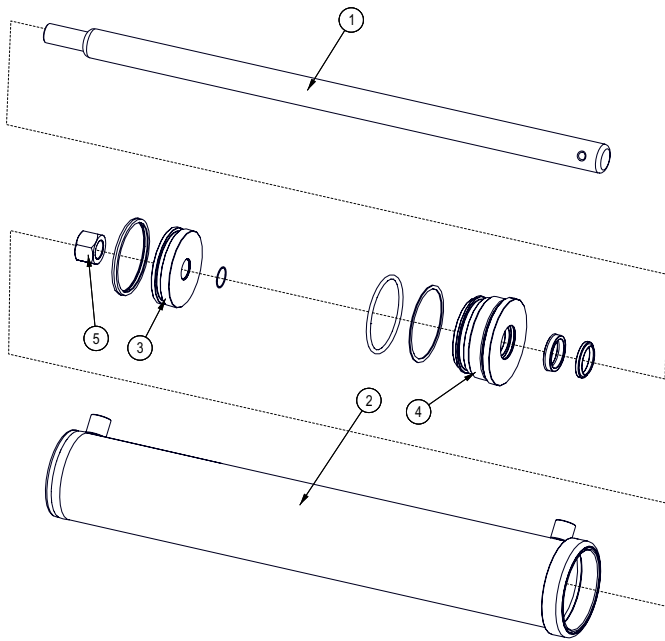


### Engine and Pump Assembly



BOM ID	Part No.	Description	Qty
1	Z46407	Shaft Coupling, L075 x 7/16"	1
2	Z46408	Spider, L075	1
3	Z46433	Shaft Coupling, L075 x 7/8" w/ 3/16" Keyway	1
4	Z46521	Key, 3/16" x 3/16" x 7/8"	1
5	Z46591	Woodruff Key, 3/32" x 1/2"	1
6	Z47711	Subaru EA190V5003M, Rope	1
7	Z53201	Two-Stage Pump, 11GPM	1
8	Z74121	Set Screw, 5/16NC x 3/8"	2
9	Z51383	Elbow 90, MORB x FPX 0808	1
10	Z72221	Hex Lock Nut, 5/16NC	2
11	Z71255	Hex Bolt, 5/16NC x 5-1/2"	2
12	Z79401	Hose Clamp, SAE #16 (1-1/2")	1

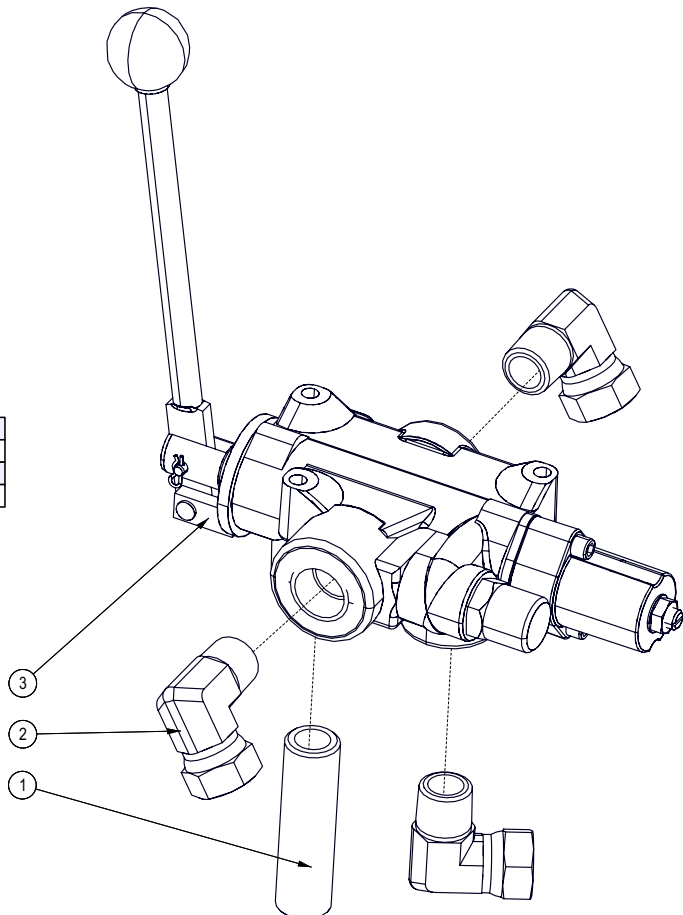
**Cylinder Assembly**

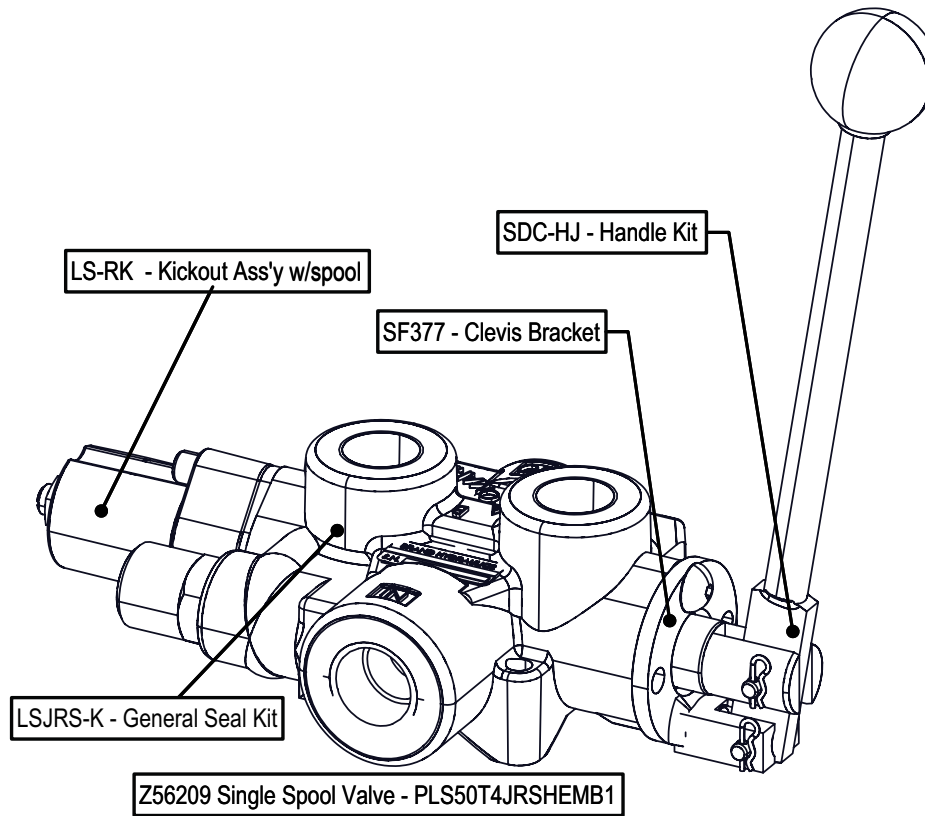


BOM ID	Part No.	Description	Qty
1	2011C1012	Rod, 1-1/2 x 1	1
2	2011C1014	Barrel, 4"	1
3	P100-400SP	Piston, 4" Bore	1
4	G400-150S	Gland, 4" x 1-1/2"	1
5	Z72276	Hex Lock Nut 1NF Grade 8	1

**Valve Assembly**

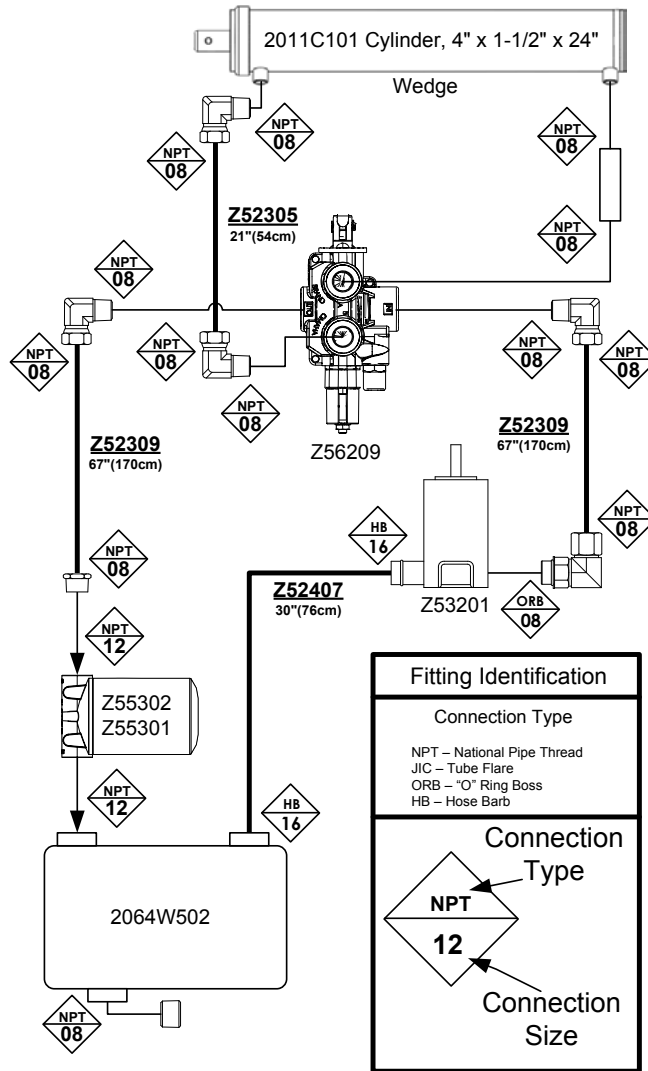
BOM ID	Part No.	Description	Qty
1	Z51113	Pipe Nipple, MP08 x 3"	1
2	Z51331	Elbow 90, MP x FPX 0808	3
3	Z56209	Single Spool Valve, OC Tandem SCDK x 18GPM	1



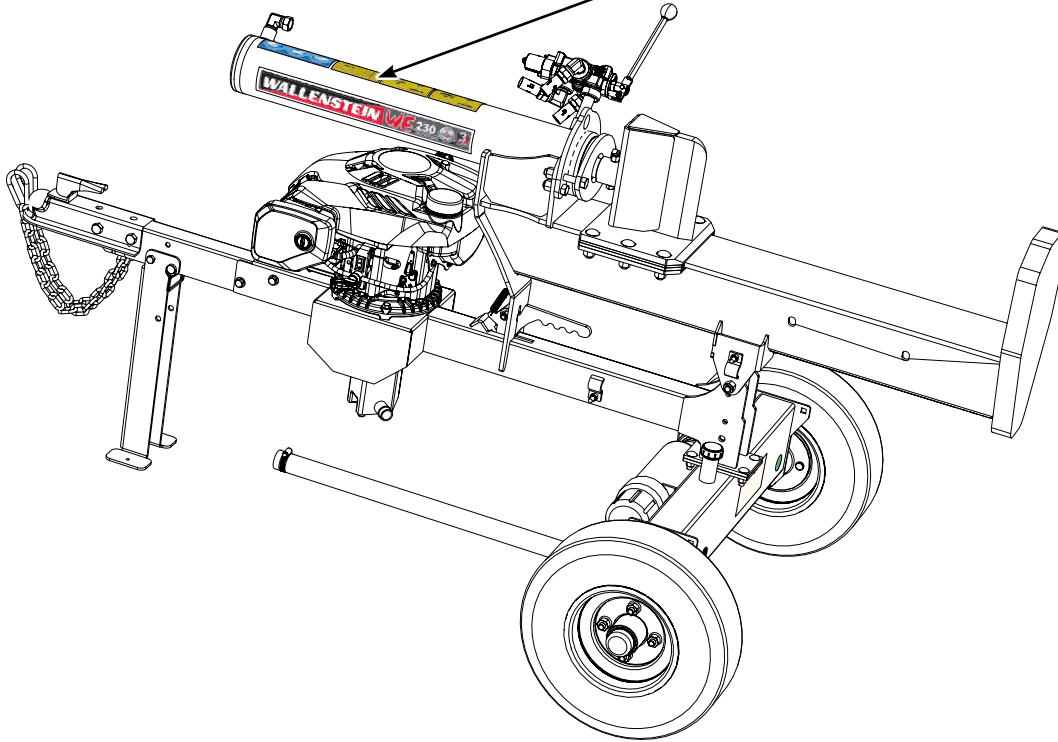
**Z56209 Service Kits****Hydraulic Hose List**

Part Number	Description	Qty	Where Used
Z52305	1/2" Hose, MP08 x MP08 x 19"	1	WE230
Z52309	1/2" Hose, MP08 x MP08 x 67"	1	WE230
2064F503	1/2" Hose, MP08 x MP08 x 72"	1	WE230
2064F504	Suction Hose, 1" x 30"	1	WE230

**Hydraulic Schematic**



Label Layout



Z94666 x 2



Z94239 x 1



Z94119 x 2



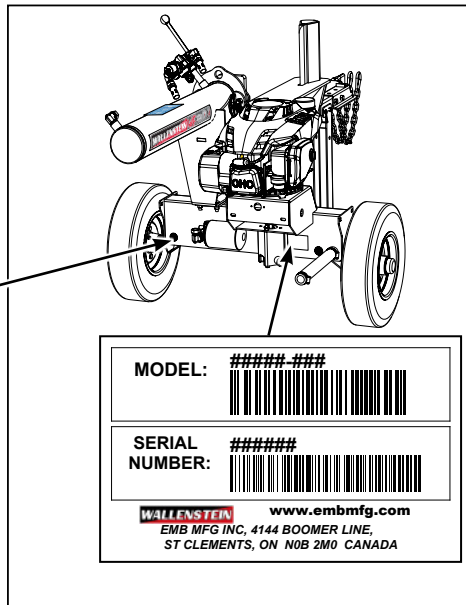
Z94123 x 2



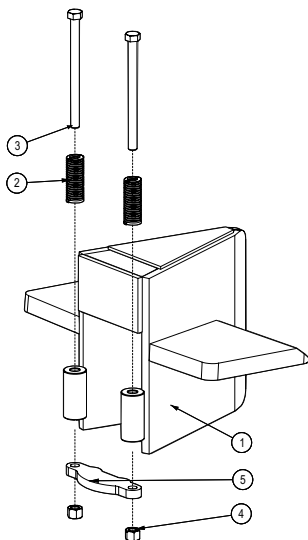
Z94124 x 2



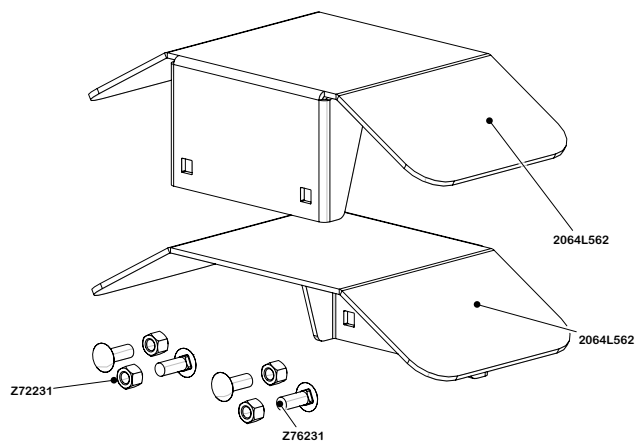
Z94428 x 2



**Accessories**



**#4120 4-Way Wedge**  
**#Z97801 Installation Instructions included**

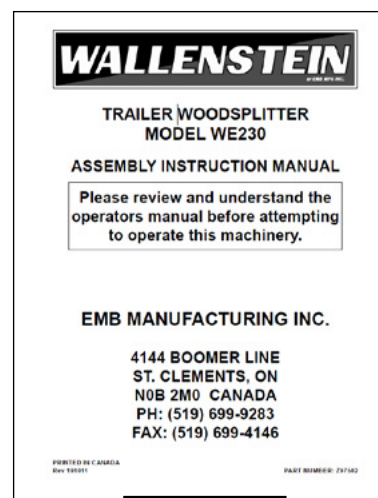


**#2064A515 Plain Fender Kit**

Aerosol Touch-up Paint	
Part No.	Color
Z9011	Kubota Orange
Z9012	John Deere Green
Z9013	Bristol Green
Z9014	Ford Tractor Blue
Z9015	Red
Z9017	Gloss Black
Z9018	Granite Grey
Z9019	Caterpillar Yellow
Z9020	New Holland Blue



**Z97059**



**Z97502**

**#Z97059 #Z97502**  
**TRAILER WOODSPLITTER OPERATOR'S MANUAL**

Available as downloads at  
[www.wallensteinequipment.com](http://www.wallensteinequipment.com)