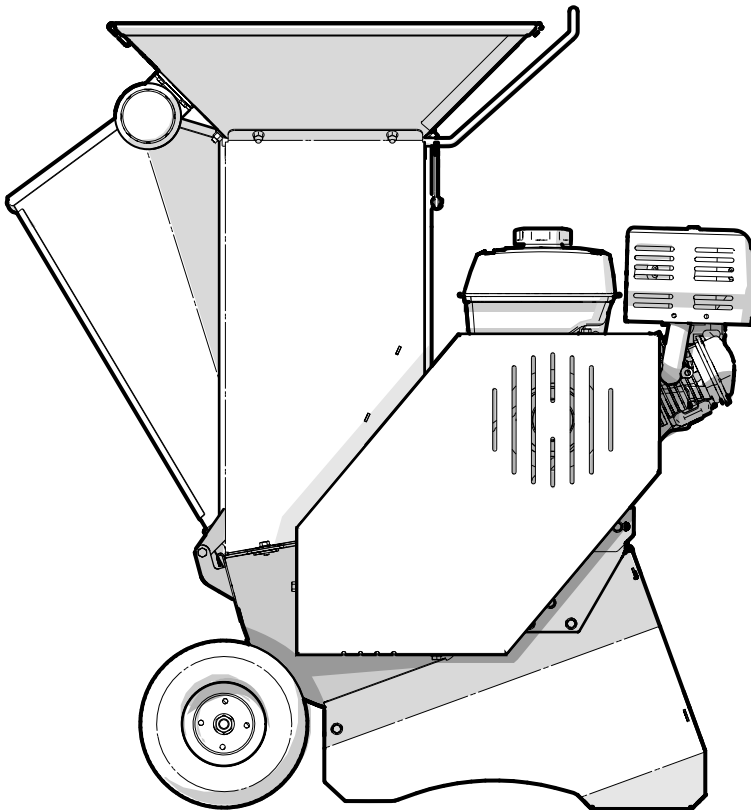


PARTS MANUAL

Serial Number 1MC3409S1 & up

BXMC3409S CART CHIPPER / SHREDDER



Foreword

This Wallenstein parts manual is prepared to assist customers in ordering quality OEM replacement parts.

Regular maintenance combined with replacing old, worn or broken parts with the correct OEM parts is essential in prolonging the life of your Wallenstein product. Refer to this manual to identify replacement parts.

To order parts, contact your Wallenstein dealer or distributor. Have the product model and serial number handy.

If your dealer is no longer available, please go to our website: <http://wallensteinequipment.com> and click on the [Dealer Locator](#) to find the nearest dealer.

All information contained in this parts manual is current as per the revision date at the bottom of the page. Wallenstein reserves the right to change product specifications at any time without notice.

If your product specifications differ from those contained in this manual, contact Wallenstein for current information.

Reproduction of information in this parts manual is prohibited without prior written permission from Wallenstein Equipment Inc.

Wallenstein Equipment Inc. • © 2020

WARNING!

Refer to the operators manual for safe operation and maintenance.

Maintenance should be performed by trained personnel only.

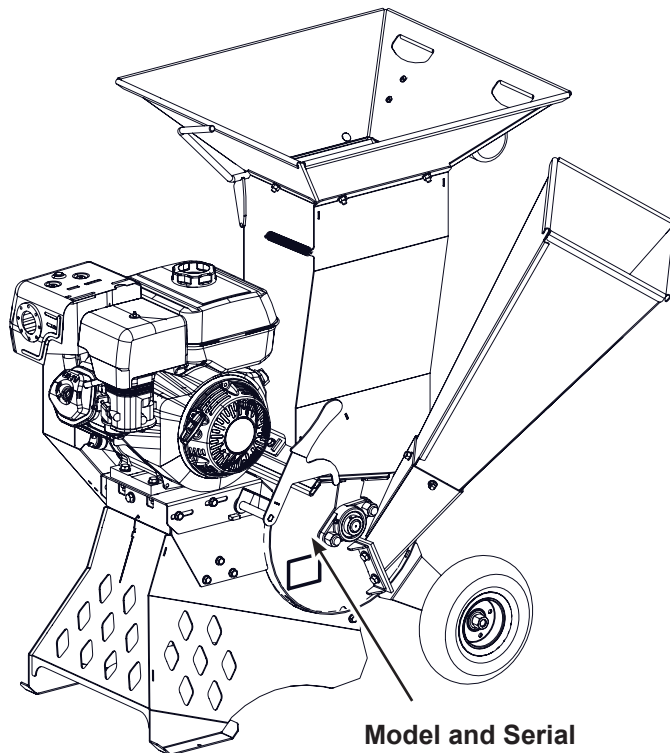
Serial Number Location

Always provide the model and serial number of your Wallenstein product when ordering parts or requesting service or other information. This information is found on the product information plate as shown below.

Record your product information here for future reference.

Model _____

Serial Number _____



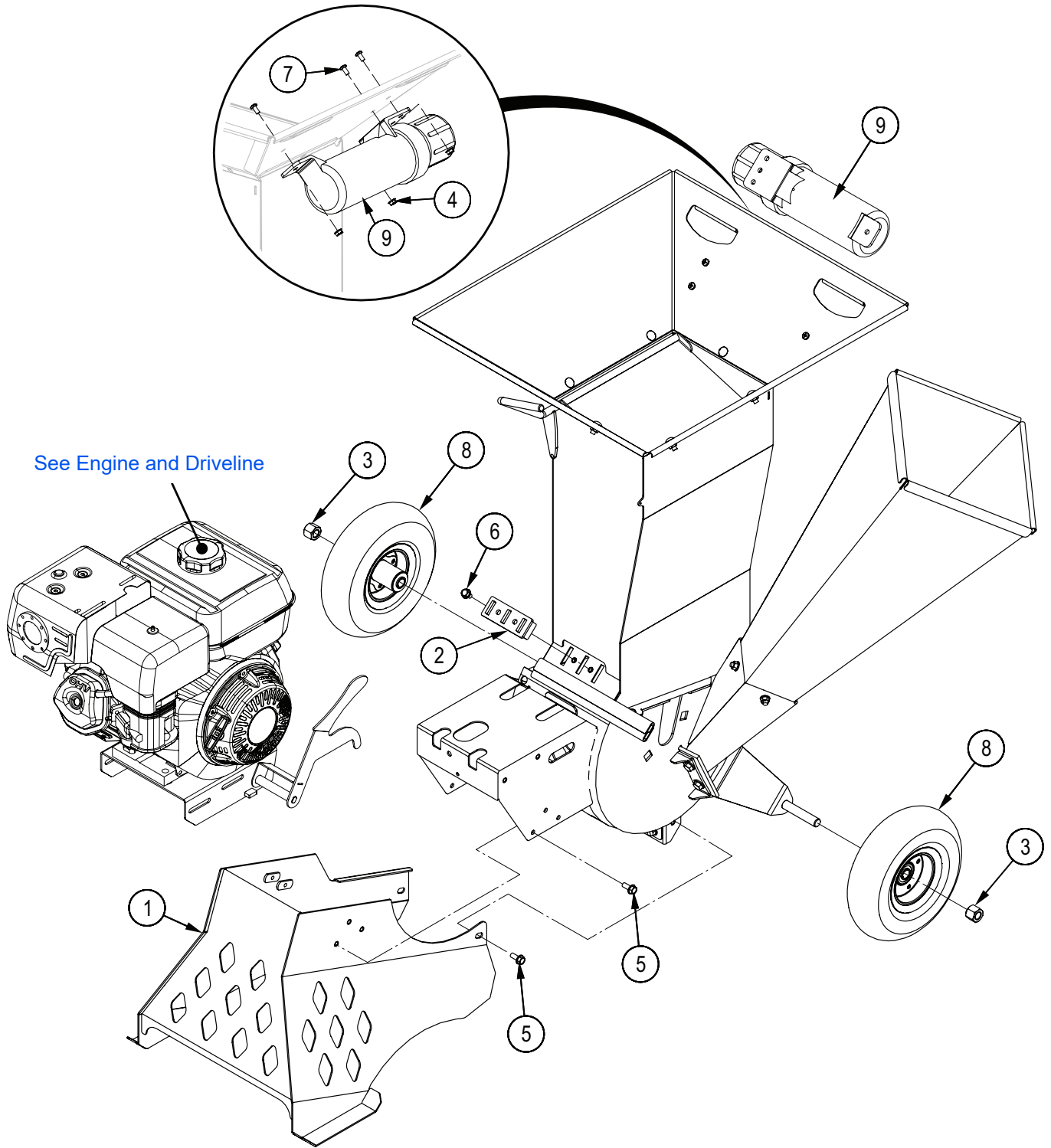
Model and Serial
Number Location

www.wallensteinequipment.com

Contents

Main Parts	4
Upper and Lower Housing	5
Engine and Driveline	6
Rotor Assembly	7
Decal Layout	8
Decal Layout	9
Accessories	10
Bolt Torque	11
Hydraulic Fitting Torque	12
Wheel Lug Torque	12

Main Parts

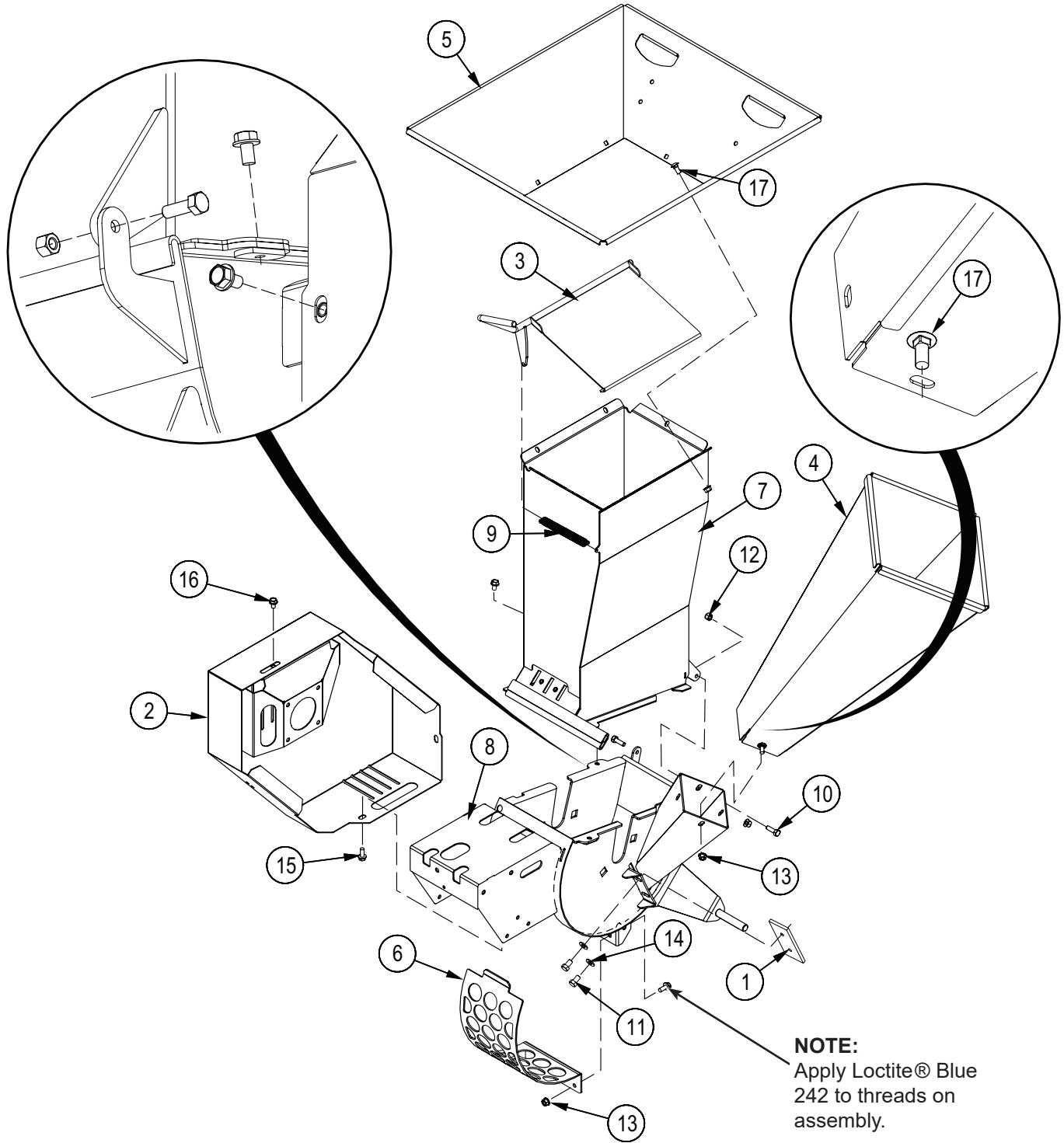


See Engine and Driveline

Item No.	Part No.	Description	Qty
1	1074W120	Shredder Guard	1
2	1073W125	Chop Block	1
3	Z72261	Hex Lock Nut, 5/8NC	2
4	Z72511	Serrated Flange Locknut, 1/4NC	3
5	Z76121	Flange Bolt, 5/16NC x 3/4"	8

Item No.	Part No.	Description	Qty
6	Z76122	Flange Bolt, 5/16NC x 1/2"	2
7	Z78317	Machine Screw, 1/4NC x 1/2"	3
8	Z91307	4.10-3.50-4NHS LRB 300lbs x 5/8"	2
9	Z96503	Manual Tube, 3-1/2" Short	1

Upper and Lower Housing



NOTE:
Apply Loctite® Blue 242 to threads on assembly.

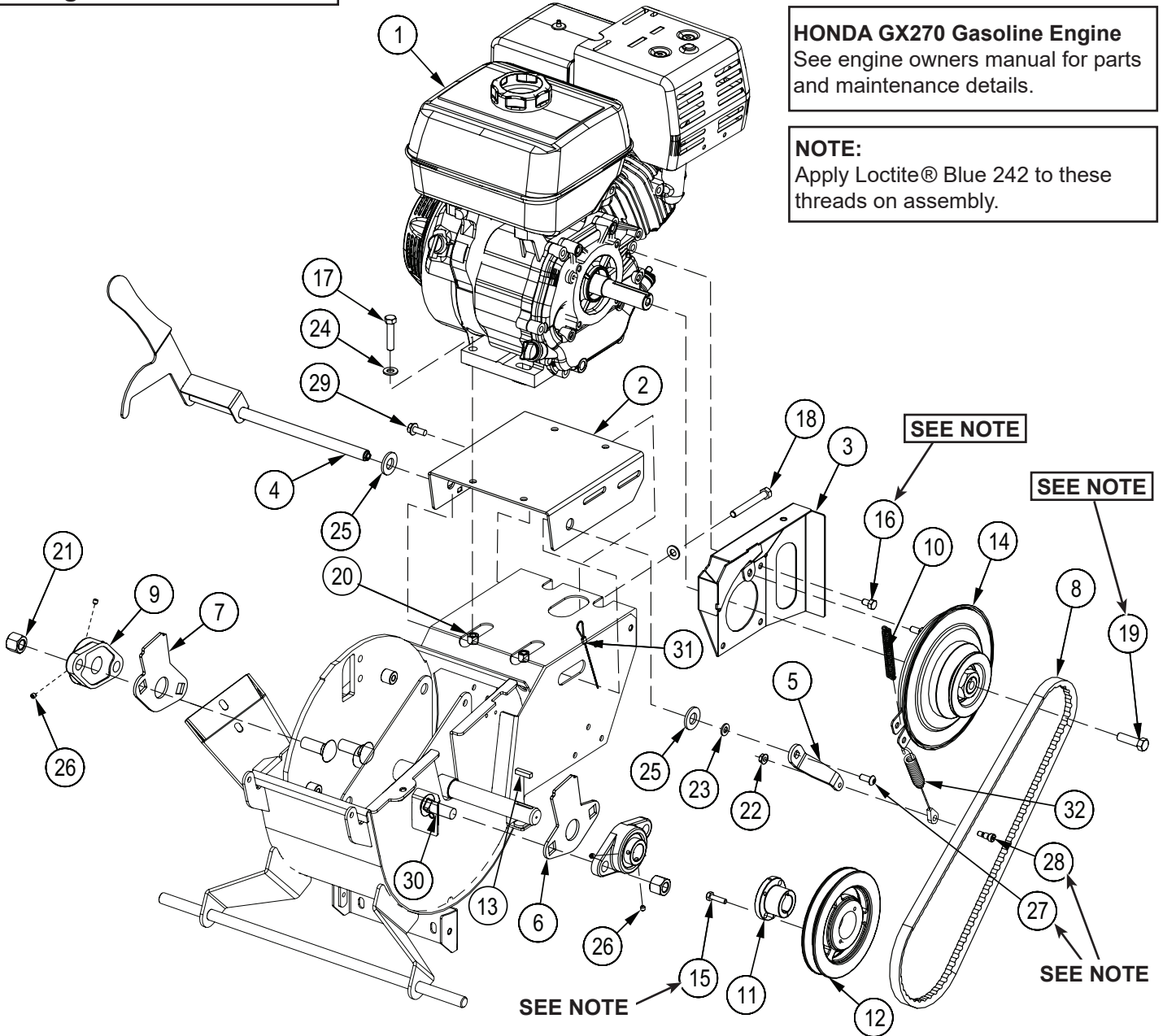
Item No.	Part No.	Description	Qty
1	1056M304	Knife, 3" Ledger	1
2	1073L533	Belt Shield	1
3	1073W107	Flap, Hopper	1
4	1073W112	Extension	1
5	1073W129	Hopper	1
6	1074L250	1-1/2" Round Screen	1
7	1074W104	Upper Housing	1
8	1074W502	Bottom Housing	1
9	Z31301	Ext Spring, 17mm OD x 140mm x 0.080"	1

Item No.	Part No.	Description	Qty
10	Z71210	Hex Bolt, 5/16NC x 1"	2
11	Z71372G8	Hex Bolt, 3/8NF x 5/8" G8	2
12	Z72221	Hex Lock Nut, 5/16NC	2
13	Z72521	Serrated Flange Locknut, 5/16NC	12
14	Z73131	SAE Washer, 3/8"	2
15	Z76121	Flange Bolt, 5/16NC x 3/4"	4
16	Z76122	Flange Bolt, 5/16NC x 1/2"	3
17	Z76221	Carriage Bolt, 5/16NC x 3/4"	10

Engine and Driveline

HONDA GX270 Gasoline Engine
See engine owners manual for parts and maintenance details.

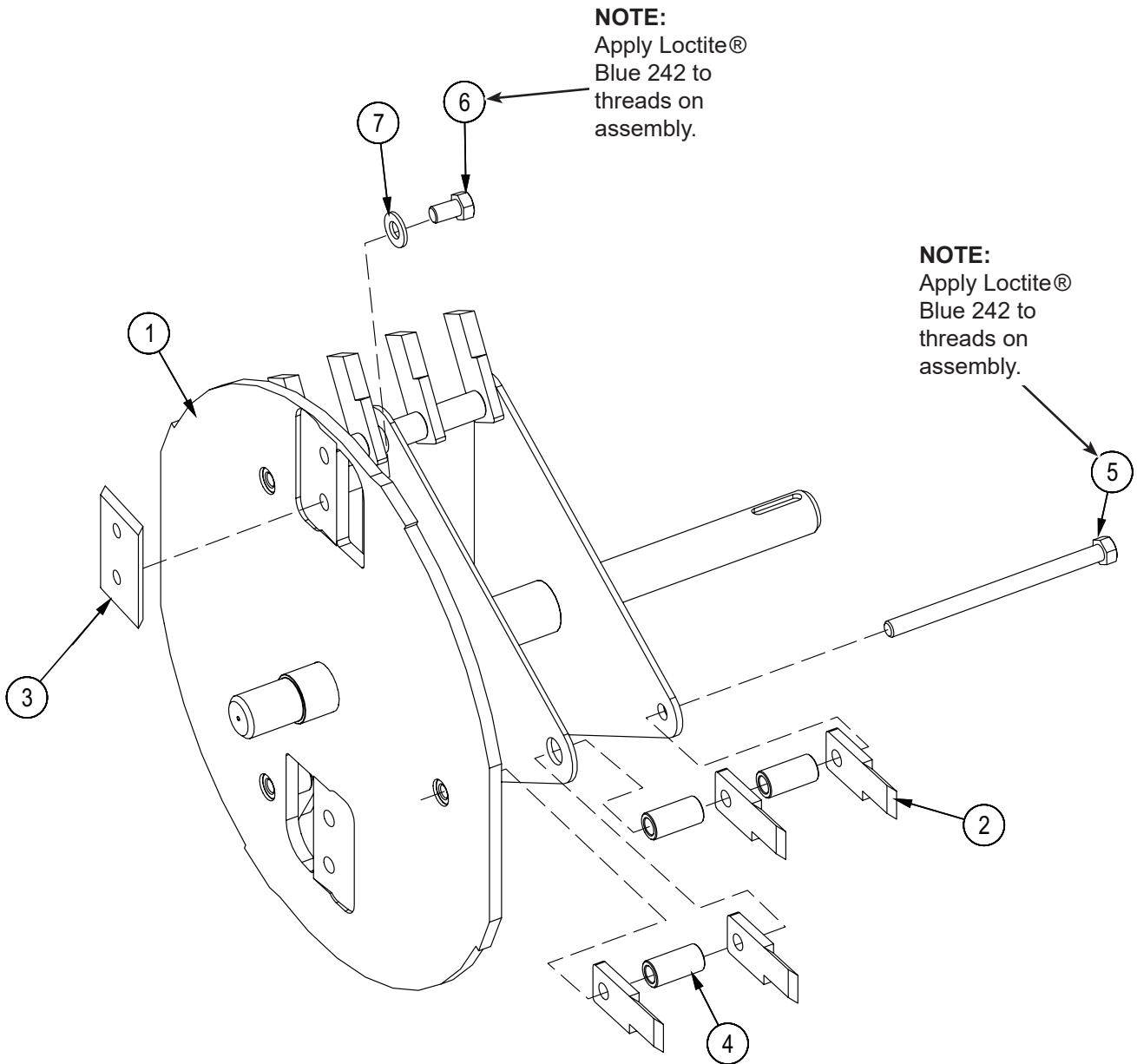
NOTE:
Apply Loctite® Blue 242 to these threads on assembly.



Item No.	Part No.	Description	Qty
1	Z47135	Honda GX270UTQH6, Rope	1
2	1074W522	Engine Plate	1
3	1073W524	Shield Mount	1
4	1074W521	Clutch Actuator	1
5	1073L562	Clutch Actuator Foot	1
6	1074L216	Bearing Cover Plate	1
7	1074L266	Bearing Cover Plate	1
8	Z41167	Single Belt, BX44	1
9	Z25101	2-Bolt Flange Bearing, UCFL205-16	2
10	Z31304	Ext Spring, 1/2" OD x 2-1/2" x .063"	1
11	Z41510	Hub, L x 1"	1
12	Z41609	Sheave, MBL62 x L	1
13	Z46533	Key, 1/4" x 1/4" x 1"	1
14	Z49305	Brake Clutch, 3.6P x 1"	1
15	Z71110	Hex Bolt, 1/4NC x 1"	2
16	Z71271	Hex Bolt, 5/16NF x 1/2"	4
17	Z71317	Hex Bolt, 3/8NC x 1-3/4"	4

Item No.	Part No.	Description	Qty
18	Z71391	Hex Bolt, 3/8NC x 3" Full Threads	1
19	Z71472	Hex Bolt, 7/16NF x 1-1/2"	1
20	Z72231	Hex Lock Nut, 3/8NC	4
21	Z72261	Hex Lock Nut, 5/8NC	4
22	Z72511	Serrated Flange Locknut, 1/4NC	1
23	Z73122	SAE Washer, 5/16"	1
24	Z73131	SAE Washer, 3/8"	5
25	Z73161	SAE Washer, 5/8"	2
26	Z74111	Set Screw, 1/4NC x 1/4"	4
27	Z75351	BHCS, 5/16NF x 3/4"	1
28	Z75523	Shoulder Bolt, 5/16" x 3/8"	1
29	Z76121	Flange Bolt, 5/16NC x 3/4"	4
30	Z76262	Carriage Bolt, 5/8NC x 1-3/4"	4
31	Z92110	Aircraft Cable, 1/16" x 24"	1
32	Z92117	Clutch Actuator Cable w/Spring 5/16" Eye	1

Rotor Assembly

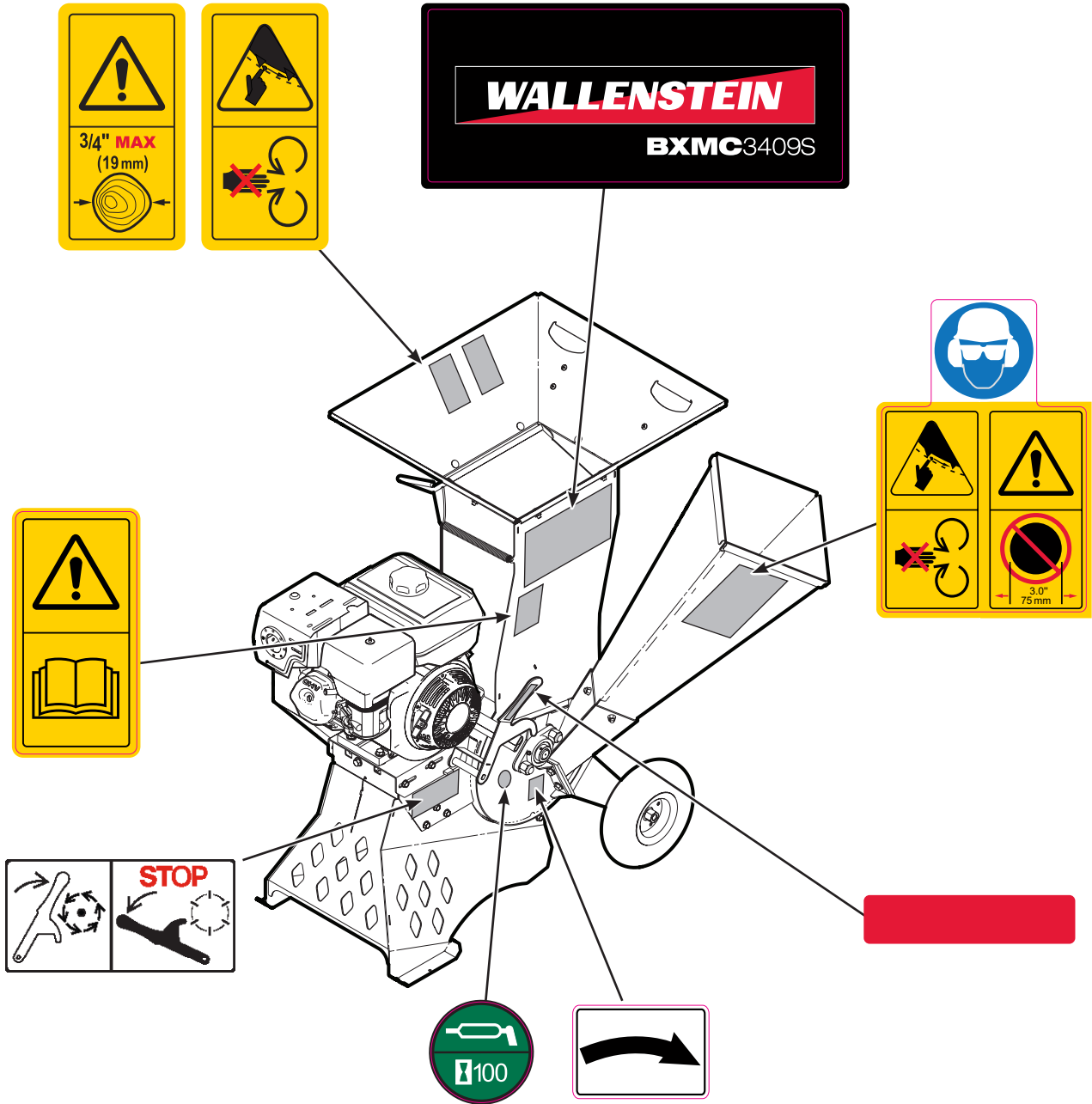


Item No.	Part No.	Description	Qty
1	1074W503	Rotor	1
2	1056M108	Knife, Shredder	12
3	1056M303	Knife, 3" Rotor	2
4	1073M104	Spacer, Shredder 1.25	9
5	Z71355G8	Hex Bolt, 3/8NC x 5-1/2" G8	3
6	Z71372G8	Hex Bolt, 3/8NF x 5/8" G8	4
7	Z73131	SAE Washer, 3/8"	4

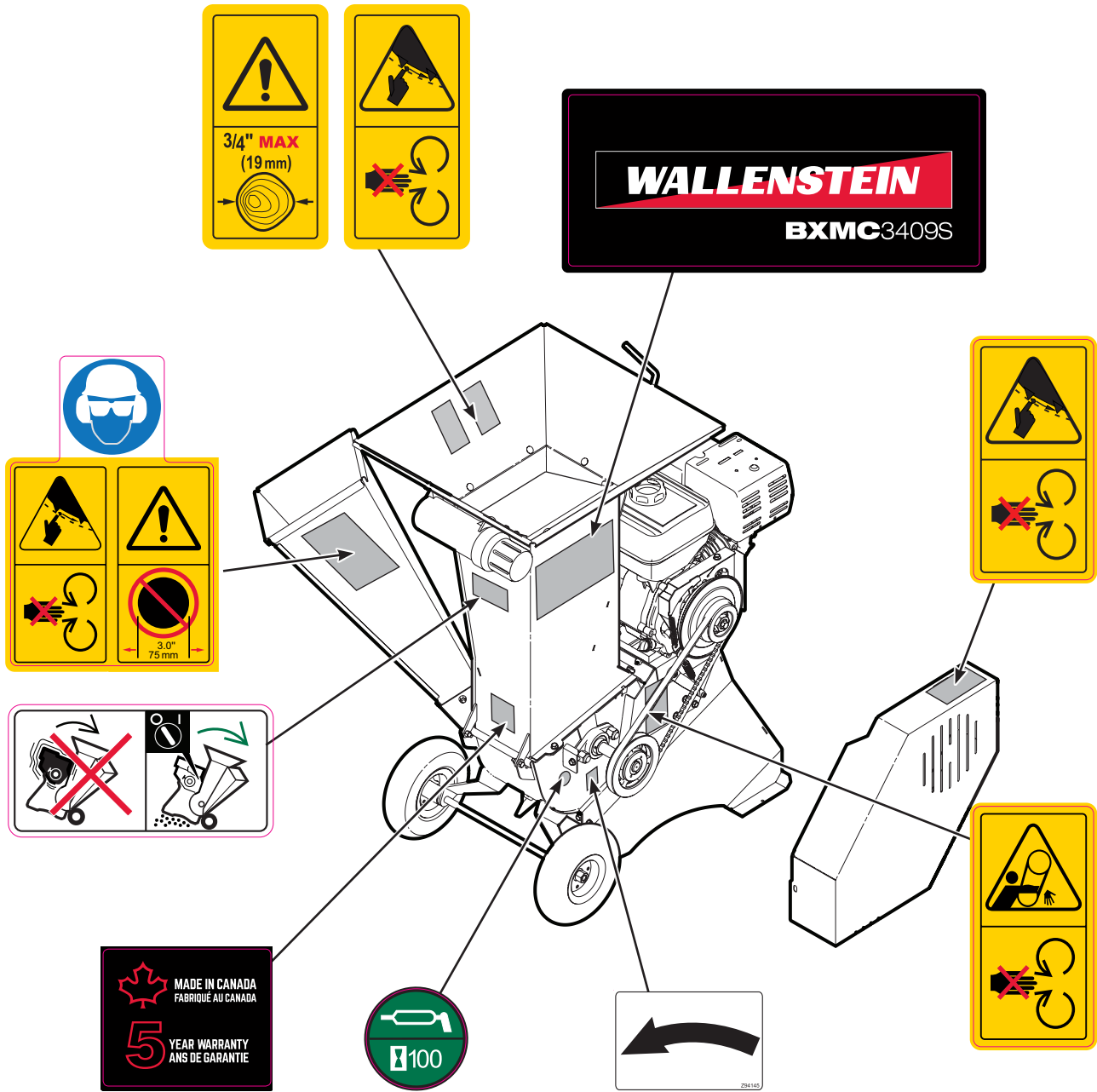
Decal Layout

IMPORTANT! If parts are replaced that have safety signs on them, new signs must be applied. Safety signs must always be replaced if they become damaged, are removed, or become illegible.

Safety signs are included in the product decal kit available from your authorized dealer. Decals are not available separately.

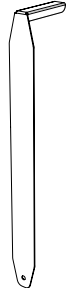


Decal Layout



Accessories

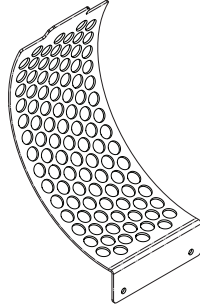
Call your dealer for pricing and availability



Ledger Clearance Setting Gauge

P/N 1012L269

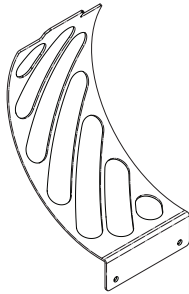
An easy and accurate way of setting the critical clearances between the ledger blade and the rotor chipper blade.



Round Screen 3/4" (19 mm)

P/N 1074L240

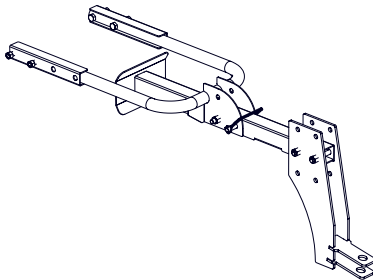
Conversion kit, simple to install. Makes a finer mulch than the standard screen.



Slotted Wet Screen 1-1/2" X 7.0

P/N 1074L260

Bolt on, easy to install conversion kit. Works well to prevent clogs when working with wet material.

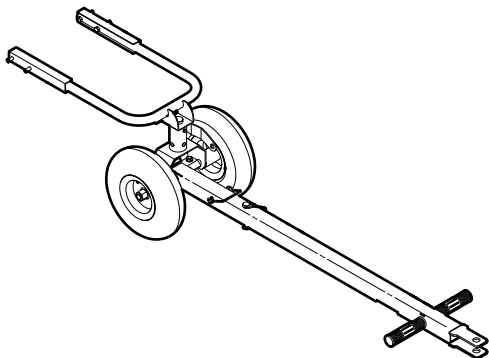


Garden Tractor Hitch

P/N 1082A355

Allows for hauling the chipper with a garden tractor. Convenient when working around the yard. A must for larger properties.

Easy to install. Bolt on to your chipper and you're ready to go!



Jockey Wheel Kit

P/N 1082A356

Easily move the chipper around with the stability of four wheels. Handle locks in the raised position. Wheels lock when positioning on slope. Convenient when working around the yard.

Easy to install. Bolt on to your chipper and you're ready to go!


Common Bolt Torque Values

Checking Bolt Torque

The tables shown give correct torque values for various bolts and capscrews. Tighten all bolts to the torque values specified in the table, unless indicated otherwise. Check tightness of bolts periodically.

IMPORTANT! If replacing hardware, use fasteners of the same grade.

IMPORTANT! Torque figures indicated in the table are for non-greased or non-oiled threads. Do not grease or oil threads unless indicated otherwise. When using a thread locker, increase torque values by 5%.

 **NOTE:** Bolt grades are identified by their head markings.

Imperial Bolt Torque Specifications

Bolt Diameter	Torque Value					
	SAE Gr. 2		SAE Gr. 5		SAE Gr. 8	
	lbf•ft	N•m	lbf•ft	N•m	lbf•ft	N•m
1/4"	6	8	9	12	12	17
5/16"	10	13	19	25	27	36
3/8"	20	27	33	45	45	63
7/16"	30	41	53	72	75	100
1/2"	45	61	80	110	115	155
9/16"	60	95	115	155	165	220
5/8"	95	128	160	215	220	305
3/4"	165	225	290	390	400	540
7/8"	170	230	420	570	650	880
1"	225	345	630	850	970	1320



SAE Gr. 2



SAE Gr. 5



SAE Gr. 8

Metric Bolt Torque Specifications

Bolt Diameter	Torque Value			
	Gr. 8.8		Gr. 10.9	
	lbf•ft	N•m	lbf•ft	N•m
M3	0.4	0.5	1.3	1.8
M4	2.2	3	3.3	4.5
M6	7	10	11	15
M8	18	25	26	35
M10	37	50	52	70
M12	66	90	92	125
M14	83	112	116	158
M16	166	225	229	310
M20	321	435	450	610
M30	1,103	1 495	1,550	2 100



8.8



10.9