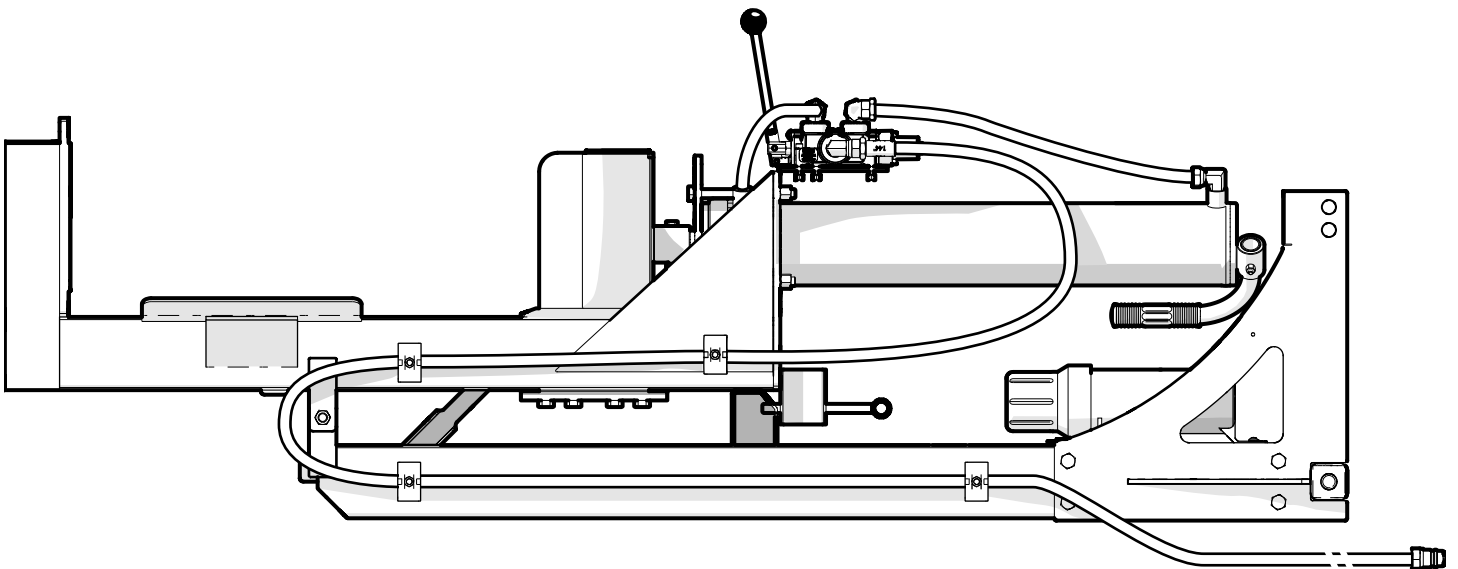


PARTS MANUAL

Serial number 900001 and up

WX 370/370C 3PH Log Splitter



Revision D Jun-2024

Part Number: 29016T600

WALLENSTEIN

Table of Contents

Introduction3
Model and Serial Number Location.....3
Main Parts.....4
Main Parts Table Callout5
Valve Assembly – WX3706
Valve Assembly – WX370C6
Valve Service Kit.....7
Hydraulic Circuit.....7
Label Locations8
Accessories9
Bolt Torque 10
Hydraulic Fitting Torque..... 11

Introduction

! WARNING!

For safety, operation, and maintenance information, see the Operator's Manual for your product.

Only qualified people are approved to maintain the machine.

! WARNING!

Replace all safety labels that are missing, damaged, or illegible. If a component is replaced and it has a safety label on it, apply a safety label to the new component. If a person operates a machine with missing, damaged, or illegible safety labels it puts them at risk of serious injury or death.

W100

This document provides information about the original equipment manufacturer (OEM) components (parts). Always replace a part with the correct OEM part. For service, support, or to order parts, contact your local Wallenstein Equipment dealer or distributor.

Always provide the model and serial number of your Wallenstein product when you order parts, or request service or other information. The model and serial number location is shown in the following illustration.

Record the model and serial number of your product here:

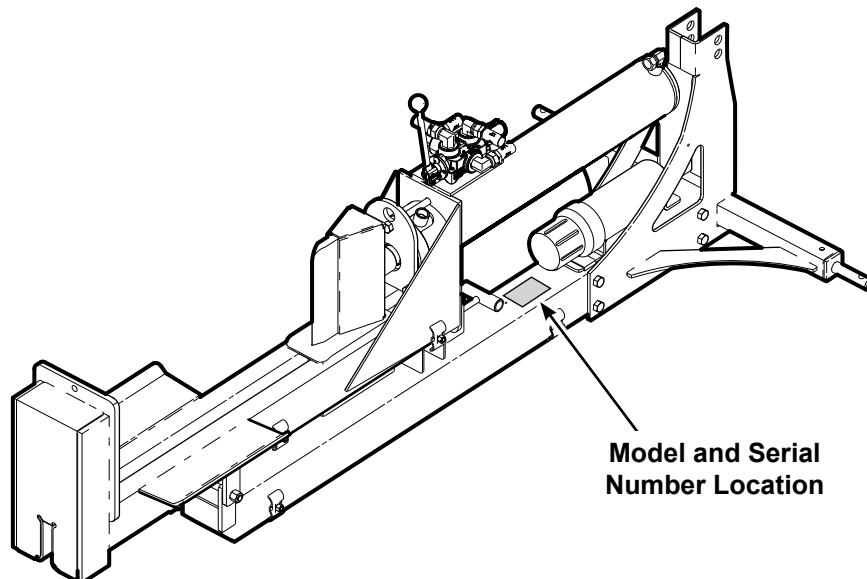
Model	
Serial Number	

The information contained in this document was current at the revision date noted on the bottom of each page. Wallenstein Equipment reserves the right to change product specifications at any time without notice. If your product specifications are different from the information in this document, contact your local dealer or distributor. To find a local dealer or distributor, go to WallensteinEquipment.com and select **Dealer Locator** at the bottom of the page.

Wallenstein Equipment Inc. • © 2024. All rights reserved.

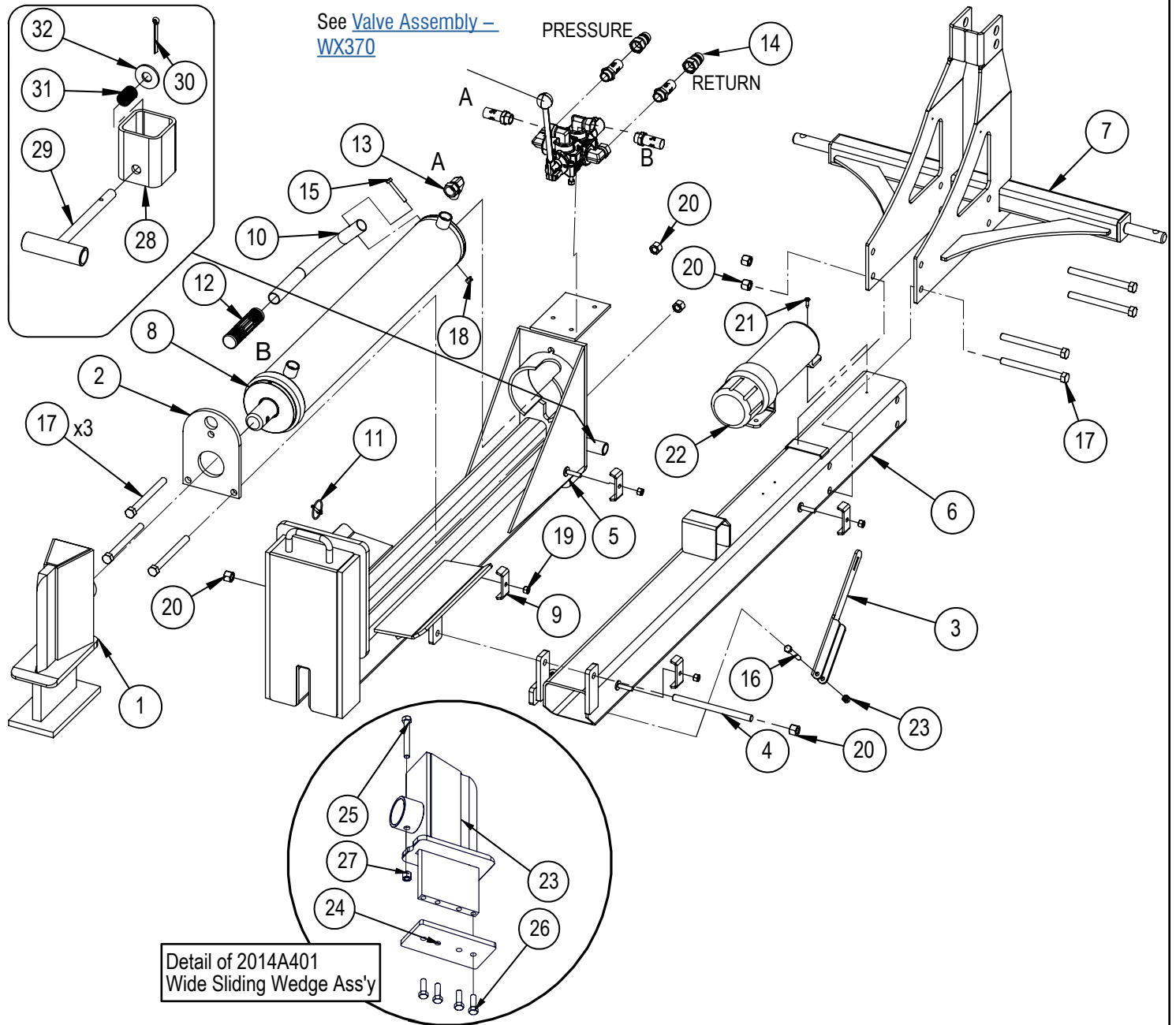
No part of this work may be copied, reproduced, replaced, distributed, published, displayed, modified, or transferred in any form or by any means except with the prior permission of Wallenstein Equipment Inc.

Model and Serial Number Location



Main Parts

See [Main Parts Table Callout](#)

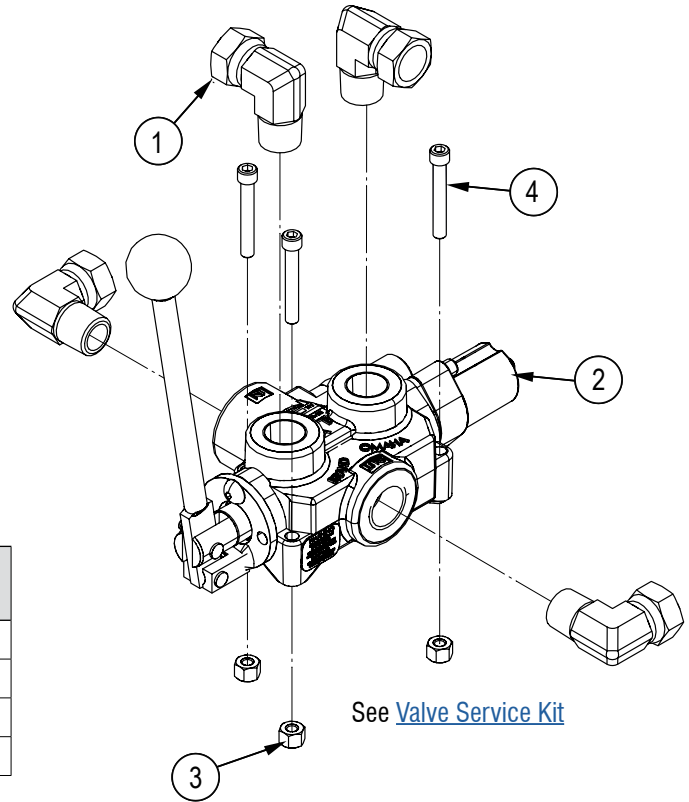


Main Parts Table Callout

Item	Part number	Description	Quantity
1	2014A401	Wide Sliding Wedge Assembly	1
2	2014S421	Plate, Cylinder Retaining (Bolt)	1
3	2016L002	Locking Latch	1
4	2016M602	Pin, Pivot Threaded	1
5	2016W601	WX370 H/V Base	1
6	2016W605	Main Base, WX370	1
7	2016W606	3pt Clamp-on	1
8	2054C401	Cylinder, 4 x 24 x 1-1/2 with Handle	1
9	2054L412	Clamp, Two Hose x 1/2"	4
10	2054S414	Handle, Lift	1
11	Z12110	Lynch Pin, 3/16"	1
12	Z19321	Handle Grip, 1"	1
13	Z51331	Elbow 90, MP x FPX 0808	1
14	Z51926	Quick Coupler, FP08 x M ISO 7241-1	2
15	Z71120	Hex Bolt, 1/4NC x 2"	1
16	Z71225	Hex Bolt, 5/16NC x 2-1/2"	1

Item	Part number	Description	Quantity
17	Z71555	Hex Bolt, 1/2NC x 5-1/2"	7
18	Z72211	Hex Lock Nut, 1/4NC	1
19	Z72221	Hex Lock Nut, 5/16NC	5
20	Z72251	Hex Lock Nut, 1/2NC	9
21	Z76721	Self-tapping Screw, 1/4" x 3/4"	1
22	Z96503	Manual Tube, 3-1/2" Short	1
23	2014W402	Sliding Wedge	1
24	2014S414	Plate, Sliding Wedge Capture	1
25	Z71325	Hex Bolt, 3/8NC x 2-1/2"	1
26	Z71576G8	Hex Bolt, 1/2NF x 1-1/2" G8	4
27	Z72231	Hex Lock Nut, 3/8NC	1
28	2016S604	Housing, Latch Spring	1
29	2016W603	Handle, Spring Latch	1
30	Z12321	Cotter Pin, 3/16" x 1-3/4"	1
31	Z32301	Comp Spring, 0.720" OD x 3" x 0.063"	1
32	Z73251	USS Washer, 1/2"	1

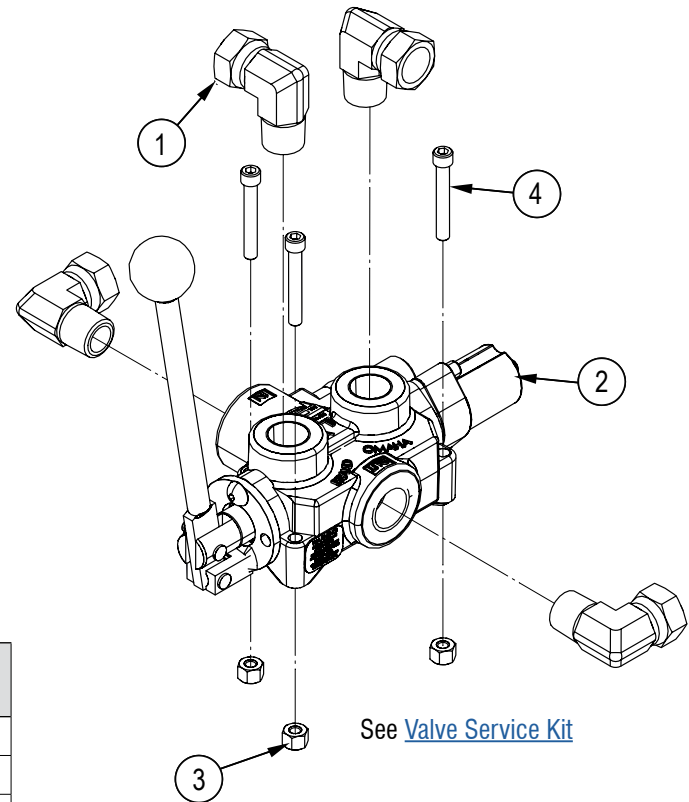
Valve Assembly – WX370



Closed Center Valve Assembly P/N Z56209

Item	Part number	Description	Quantity
1	Z51331	Elbow 90 MP x FPX 0808	4
2	LS304T4J	Spool, Open Center Valve	1
3	Z72211	Hex Lock Nut, 1/4NC	3
4	Z75114	SHCS, 1/4NC x 1-3/4"	3

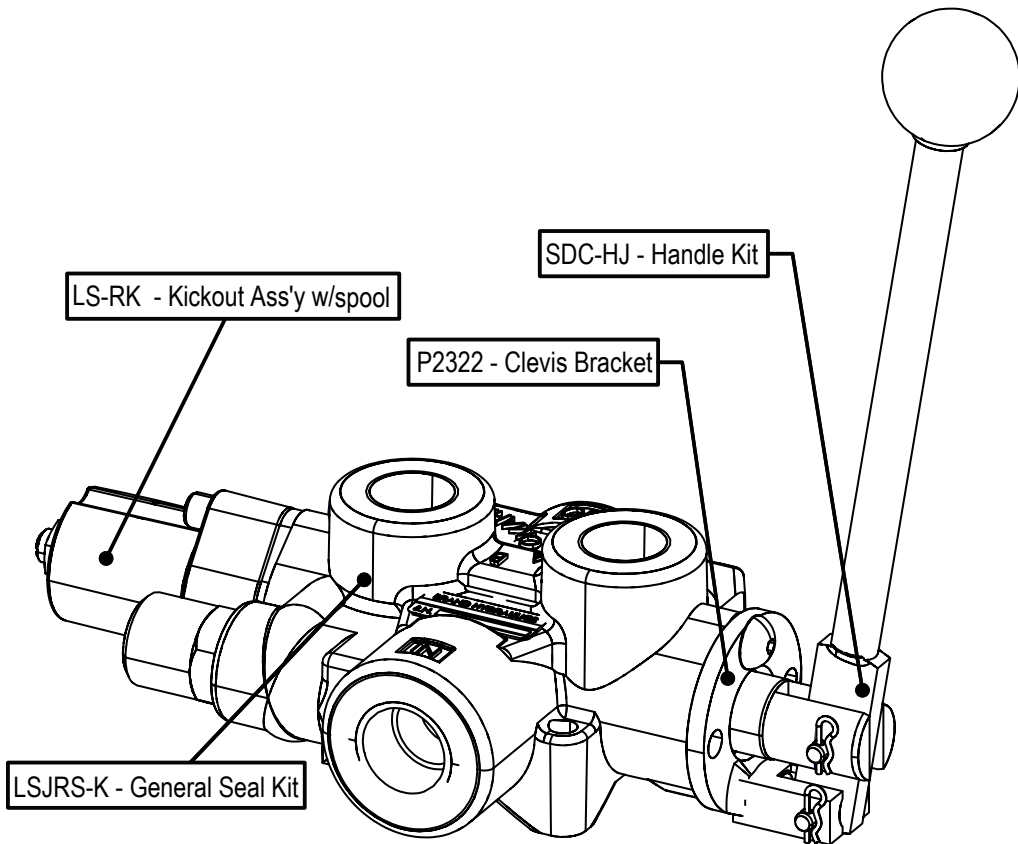
Valve Assembly – WX370C



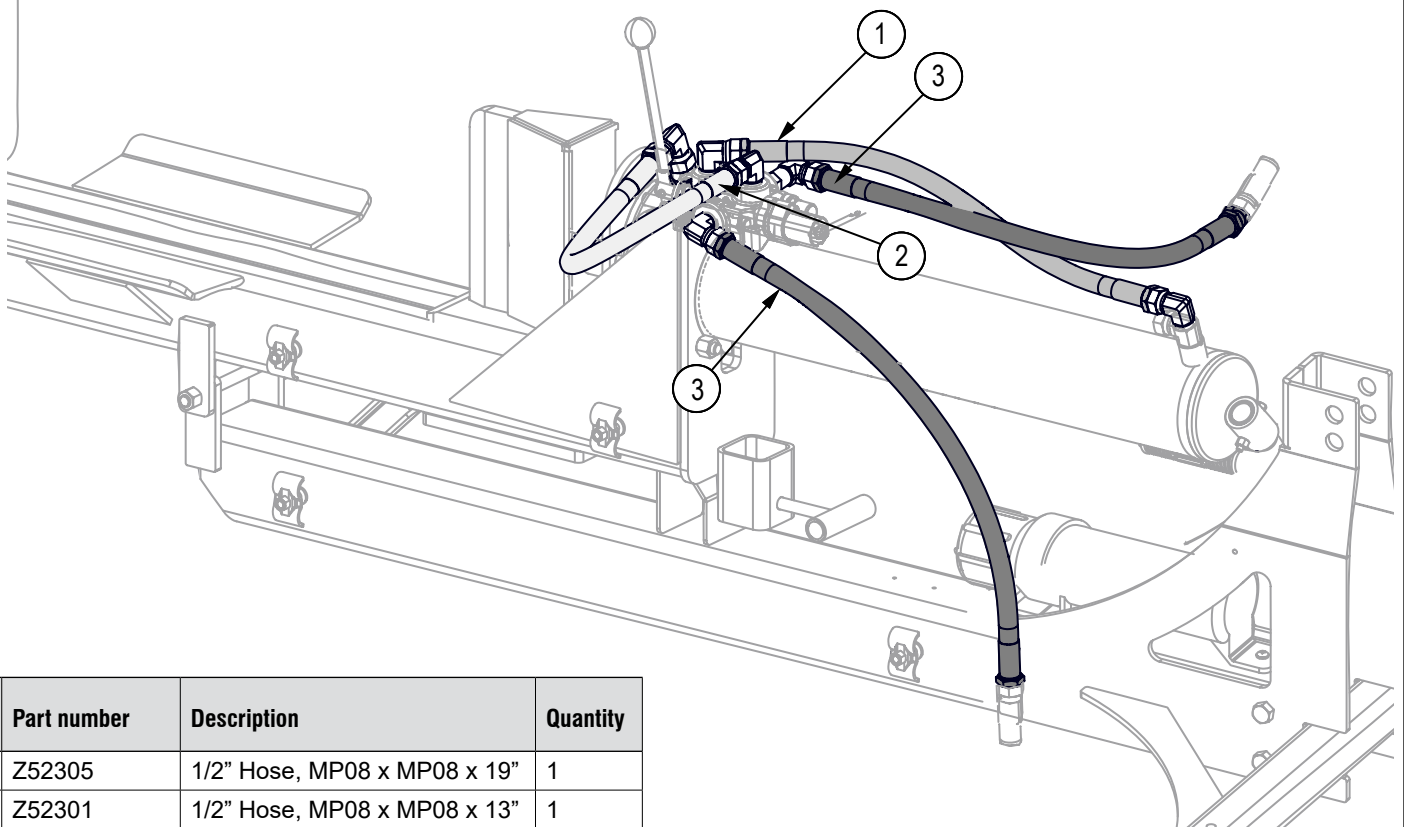
Closed Center Valve Assembly P/N Z56210

Item	Part number	Description	Quantity
1	Z51331	Elbow 90 MP x FPX 0808	4
2	LS304T4J	Spool, Open Center Valve	1
3	Z72211	Hex Lock Nut, 1/4NC	3
4	Z75114	SHCS, 1/4NC x 1-3/4"	3

Valve Service Kit



Hydraulic Circuit

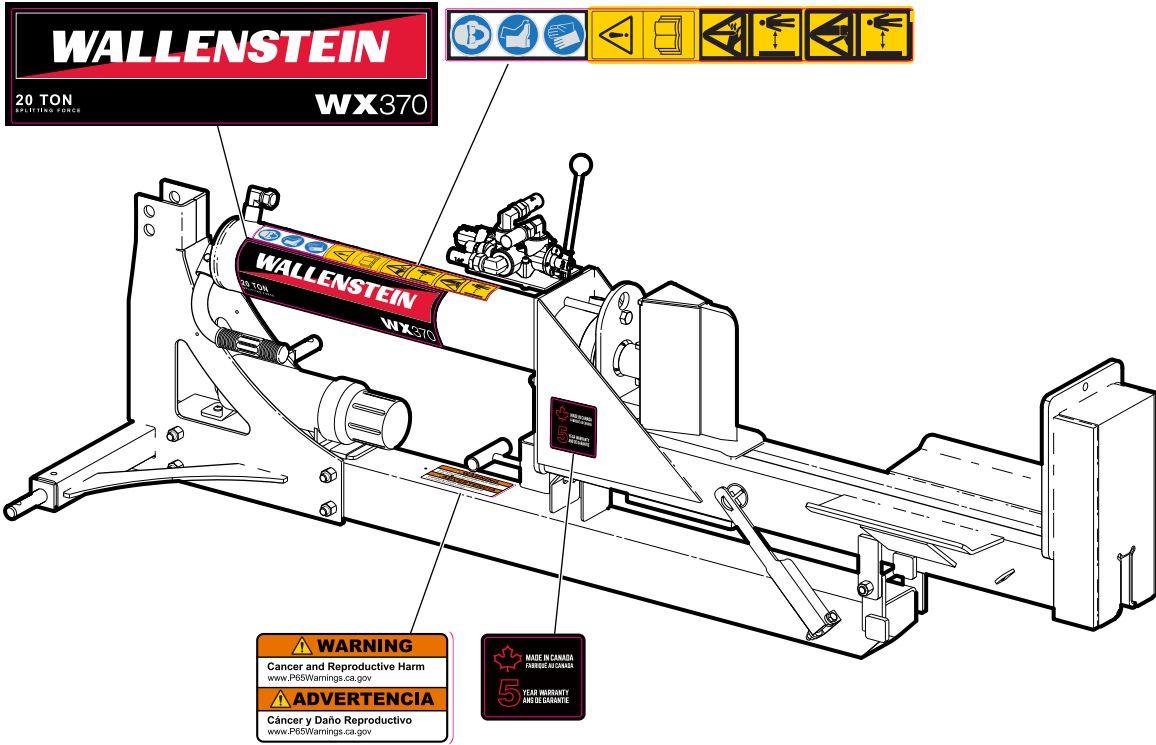


Item	Part number	Description	Quantity
1	Z52305	1/2" Hose, MP08 x MP08 x 19"	1
2	Z52301	1/2" Hose, MP08 x MP08 x 13"	1
3	Z52324	1/2" Hose, MP08 x MP08 x 144"	2

Label Locations

IMPORTANT! If you replace a part that has a safety label on it, you must apply a new safety label. Immediately replace safety labels that are damaged, have been removed, or are illegible.

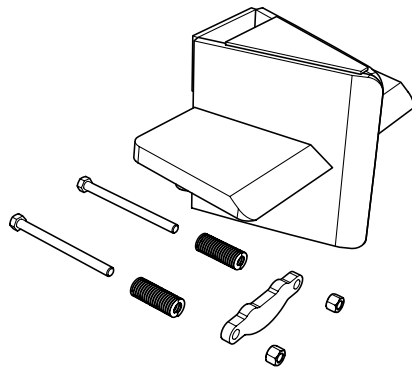
Contact your local Wallenstein Equipment dealer or distributor to order a safety label kit. Labels are not sold individually.



Accessories

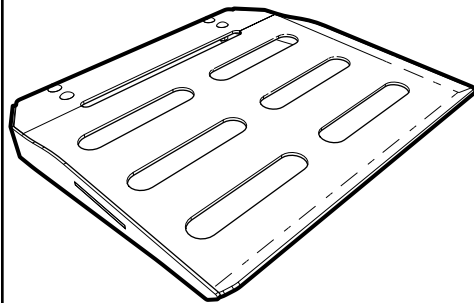
For price and availability, contact your local Wallenstein dealer or distributor.

For accessory installation instructions, go to WallensteinEquipment.com/Support.aspx, and then select **Accessories**.



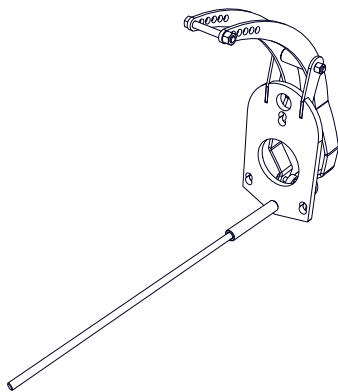
4-Way Wedge W4120

Boost your productivity and make quick work out of logs by splitting four pieces at once. This is an ideal way to save time.



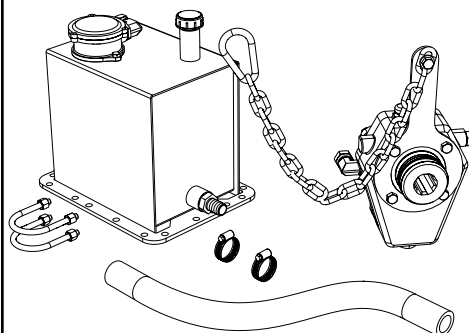
Clamp-on Shelf Extension W4211

A great way to add versatility to your splitter.



Splitter Stroke Limiter W4213

Manually set your return stroke. Great for short pieces, saves time and gets your splitting job done even faster!



Hydraulic Pump Kit W4180

Provides hydraulic power for tractors without available auxiliary power.

Bolt Torque

IMPORTANT! If you replace hardware, use fasteners of the same grade.

IMPORTANT! The torque specifications in these tables are for non-greased or non-oiled threads. Do not grease or oil fastener threads unless otherwise indicated. When using a thread lock, increase the specified torque 5%.



Bolt grades are identified by the marks on the bolt head.

The bolt torque specification tables provide the correct torque settings for common bolts and capscrews. Tighten all bolts to the torque that is specified in the table, unless otherwise indicated. Check the bolt tightness periodically.

Imperial Bolt Torque Specifications

Bolt Diameter	Torque					
	SAE Gr. 2		SAE Gr. 5		SAE Gr. 8	
	lbf•ft	N•m	lbf•ft	N•m	lbf•ft	N•m
1/4 inch	6	8	9	12	12	17
5/16 inch	10	13	19	25	27	36
3/8 inch	20	27	33	45	45	63
7/16 inch	30	41	53	72	75	100
1/2 inch	45	61	80	110	115	155
9/16 inch	60	95	115	155	165	220
5/8 inch	95	128	160	215	220	305
3/4 inch	165	225	290	390	400	540
7/8 inch	170	230	420	570	650	880



SAE Gr. 2



SAE Gr. 5



SAE Gr. 8

Metric Bolt Torque Specifications

Bolt Diameter	Torque			
	Gr. 8.8		Gr. 10.9	
	lbf•ft	N•m	lbf•ft	N•m
M3	0.4	0.5	1.3	1.8
M4	2.2	3	3.3	4.5
M6	7	10	11	15
M8	18	25	26	35
M10	37	50	52	70
M12	66	90	92	125
M14	83	112	116	158
M16	166	225	229	310
M20	321	435	450	610
M30	1,103	1,495	1,550	2,100



8.8



10.9

Hydraulic Fitting Torque

Tighten flare-type tube fittings:

1. Check the flare and flare seat for defects that might cause leaks.
2. Align the tube with the fitting before tightening.
3. Hand-tighten the swivel nut until it is snug.
4. To prevent the tube from twisting, use two wrenches. Place one wrench on the connector body and tighten the swivel nut with the second wrench. Torque the fitting to the correct specification.

If a torque wrench is not available, use the flats from finger tight (FFFT) method.

Hydraulic Fitting Torque Specifications					
Tube size OD	Hex size across flats	Torque		Flats from finger tight	
		lbf•ft	N•m	Flats	Turns
3/16	7/16	6	8	2	1/6
1/4	9/16	11–12	15–17	2	1/6
5/16	5/8	14–16	19–22	2	1/6
3/8	11/16	20–22	27–30	1-1/4	1/6
1/2	7/8	44–48	59–65	1	1/6
5/8	1	50–58	68–79	1	1/6
3/4	1-1/4	79–88	107–119	1	1/8
1	1-5/8	117–125	158–170	1	1/8

Specifications are for non-lubricated connections.



MAKING WORK FEEL MORE LIKE PLAY™

WallensteinEquipment.com

