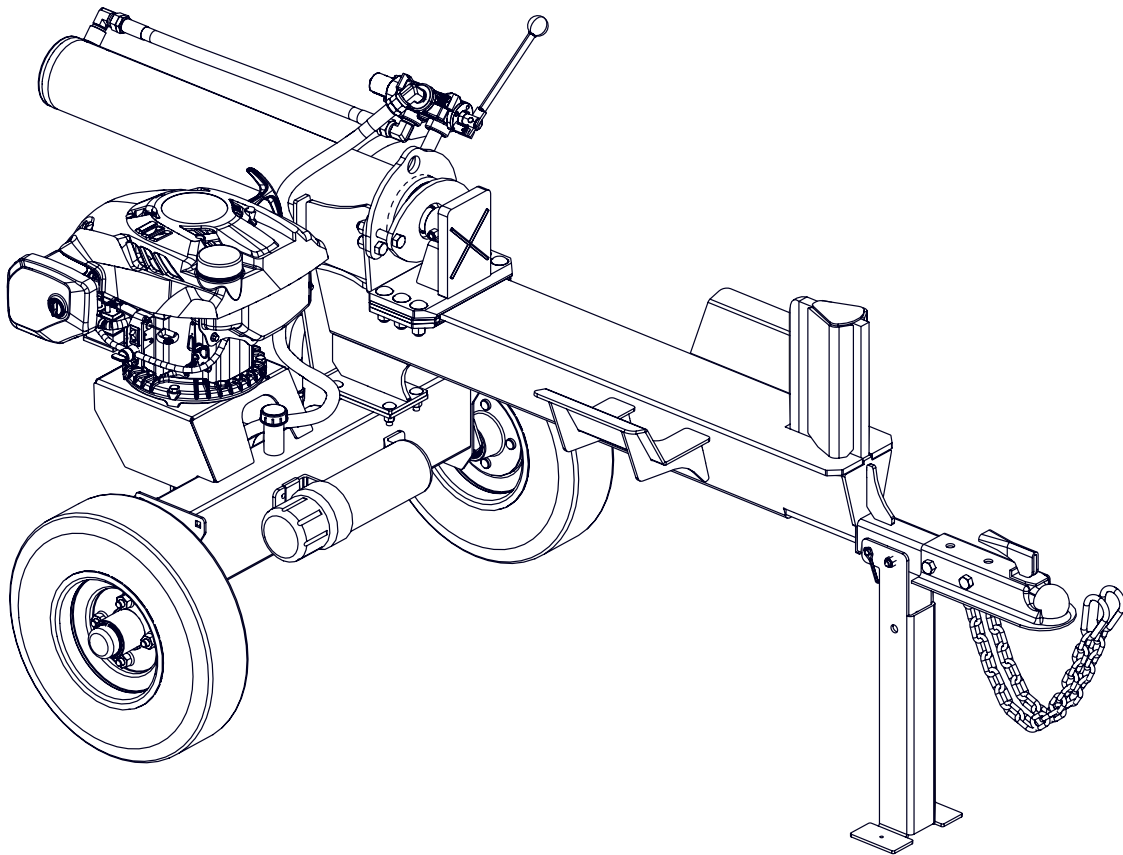




EMB Manufacturing Inc.
4144 Boomer Line · St. Clements, On · N0B 2M0 · Canada
Ph: (519) 699-9283 · Fax: (519) 699-4146
www.wallensteinequipment.com

WE220 Trailer Log Splitter Parts Manual

Starting with S/N 100256 & After



Refer to the operators
manual for safe
operation and
maintenance

Foreword

EMB Mfg. has prepared this parts manual to assist customers in ordering quality OEM replacement parts.

Proper and regular service and replacing old, worn or broken parts with the correct OEM parts are essential to prolonging the life of your EMB product. Please refer to this manual before ordering any replacement parts.

All information contained in this parts manual is based on the latest product specification available at the time of printing this manual. If your product differs from the specifications contained within this manual contact EMB Mfg. for information.

EMB reserves the right to alter specifications on their products at any time.

Reproduction of this parts manual of any kind is prohibited without prior written permission from EMB Mfg.

For parts and information please contact your dealer. If your dealer is no longer available please go to our website: <http://www.wallensteinequipment.com> and click on "FIND A DEALER NEAR YOU" for information on a local dealer.

Table of Contents

Bolt Torque.....	4
Hydraulic Fitting Torque	5
Wheel Lug Torque	5
Main Parts.....	6
Horizontal Cylinder Assembly	7
Engine & Pump Assembly	8
Hub Assembly	9
Cylinder Assembly	9
Valve Assembly.....	10
Z56209 Service Kits	10
Hydraulic Schematic.....	11
Hydraulic Hose List	11
Label Layout.....	12
Accessories.....	13

Maintenance should be performed by
trained personnel only.



Refer to the operators
manual for safe
operation and
maintenance

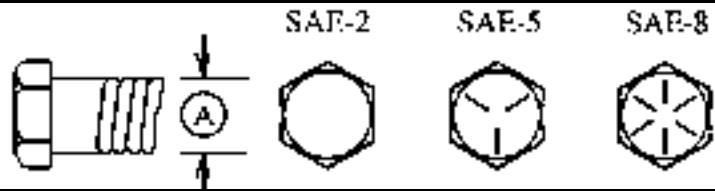
Bolt Torque

CHECKING BOLT TORQUE

The tables shown below give correct torque values for various bolts and capscrews. Tighten all bolts to the torques specified in chart unless otherwise noted. Check tightness of bolts periodically, using bolt torque chart as a guide. Replace hardware with the same strength bolt.

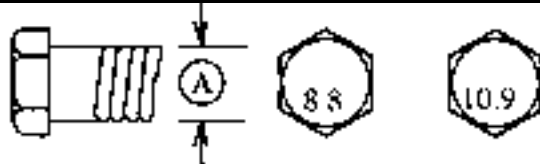
ENGLISH TORQUE SPECIFICATIONS

Bolt Diameter "A"	Bolt Torque*					
	SAE 2 (N.m) (lb-ft)		SAE 5 (N.m) (lb-ft)		SAE 8 (N.m) (lb-ft)	
1/4"	8	6	12	9	17	12
5/16"	13	10	25	19	36	27
3/8"	27	20	45	33	63	45
7/16"	41	30	72	53	100	75
1/2"	61	45	110	80	155	115
9/16"	95	60	155	115	220	165
5/8"	128	95	215	160	305	220
3/4"	225	165	390	290	540	400
7/8"	230	170	570	420	880	650
1"	345	225	850	630	1320	970



METRIC TORQUE SPECIFICATIONS

Bolt Diameter "A"	Bolt Torque*			
	8.8 (N.m) (lb-ft)		10.9 (N.m) (lb-ft)	
M3	0.5	0.4	1.8	1.3
M4	3	2.2	4.5	3.3
M5	6	4	9	7
M6	10	7	15	11
M8	25	18	35	26
M10	50	37	70	52
M12	90	66	125	92
M14	140	103	200	148
M16	225	166	310	229
M20	435	321	610	450
M24	750	553	1050	774
M30	1495	1103	2100	1550
M36	2600	1917	3675	2710



Torque figures indicated above are valid for non-greased or non-oiled threads and heads unless otherwise specified. Therefore, do not grease or oil bolts or capscrews unless otherwise specified in this manual. When using locking elements, increase torque values by 5%.

* Torque value for bolts and capscrews are identified by their head markings.

Hydraulic Fitting Torque

Tightening Flare Type Tube Fittings *

1. Check flare and flare seat for defects that might cause leakage.
2. Align tube with fitting before tightening.
3. Lubricate connection and hand tighten swivel nut until snug.
4. To prevent twisting the tube(s), use two wrenches. Place one wrench on the connector body and with the second tighten the swivel nut to the torque shown.

Tube Size OD (in.)	Nut Size Across Flats (in.)	Torque Value*		Recommended Turns To Tighten (After Finger Tightening)	
		(N.m)	(lb-ft)	(Flats)	(Turn)
3/16	7/16	8	6	1	1/6
1/4	9/16	12	9	1	1/6
5/16	5/8	16	12	1	1/6
3/8	11/16	24	18	1	1/6
1/2	7/8	46	34	1	1/6
5/8	1	62	46	1	1/6
3/4	1-1/4	102	75	3/4	1/8
7/8	1-3/8	122	90	3/4	1/8

The torque values shown are based on lubricated connections as in reassembly.

Wheel Lug Torque

It is extremely important safety procedure to apply and maintain proper wheel mounting torque on your trailer axle. Torque wrenches are the best method to assure the proper amount of torque is being applied to a fastener.

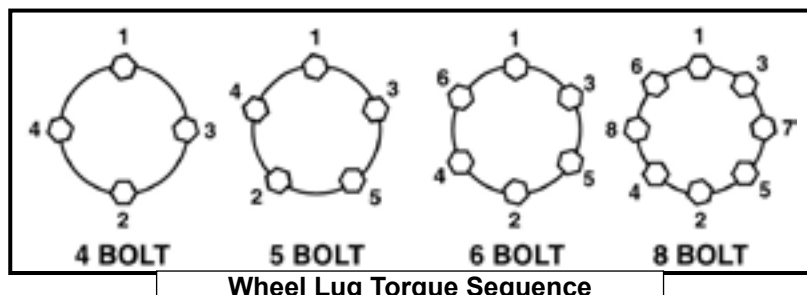
Wheel lugs should be torqued before first road use and after each wheel removal. Check and re torque after the first 16Km (10 miles), 40Km (25 miles), and again at 80Km (50 miles). Check periodically thereafter.

Note: Wheel lugs must be applied and maintained at the proper torque levels to prevent loose wheels, broken studs, and possible dangerous separation of wheels from your axle.

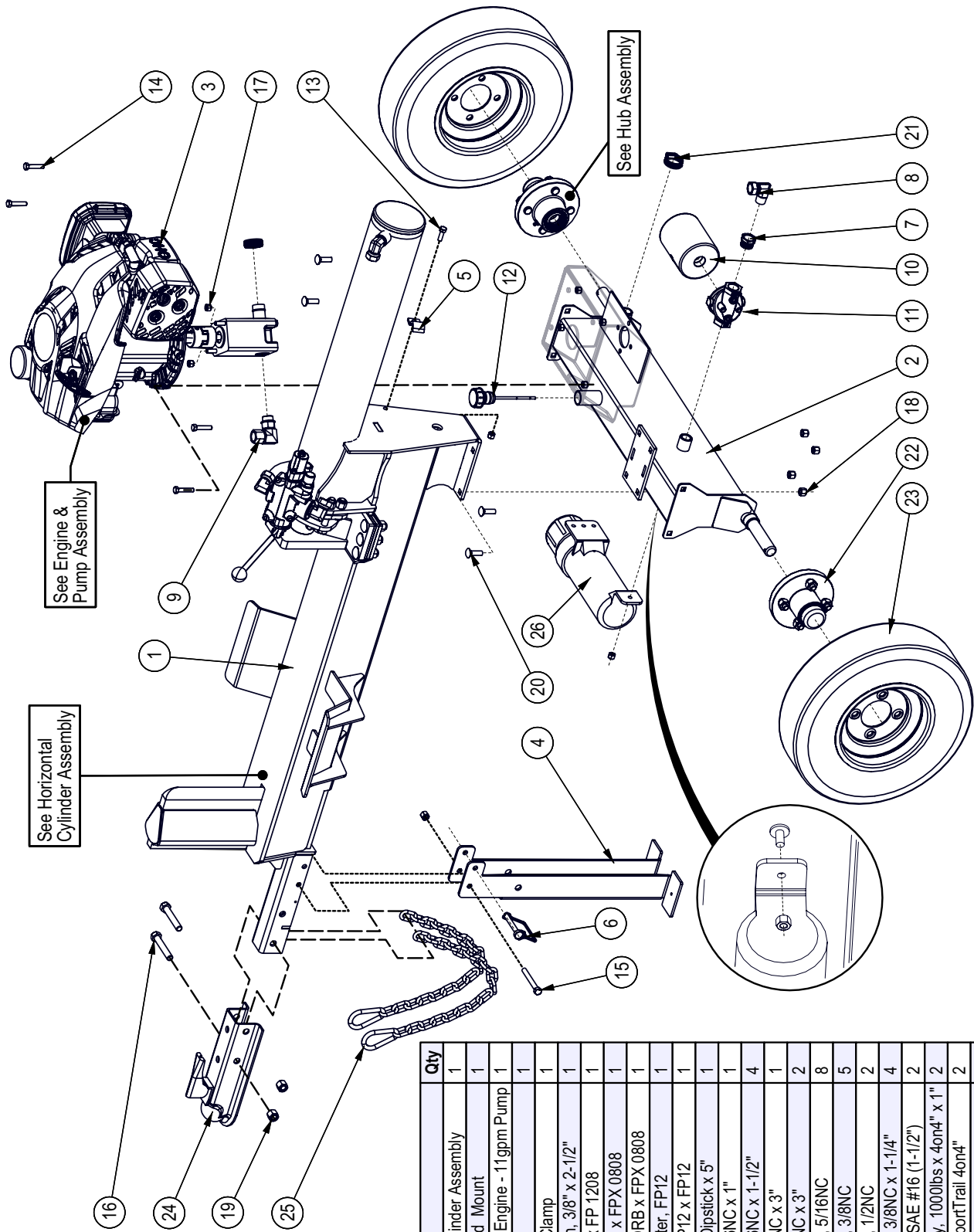
- Start all lugs by hand to prevent cross threading.
- Tighten lugs in sequence, per wheel lug torque sequence chart.
- The tightening of the fasteners should be done in stages. Following the recommended sequence, tighten fasteners per wheel torque requirements chart.

Wheel Torque Requirements

Wheel Size	Torque Unit	1st Stage	2nd Stage	3rd Stage
8"	ft-lbs	12 - 20	30 - 35	45 - 55
	Nm	16 - 26	39 - 45.5	58.5 - 71.5
12"	ft-lbs	20 - 25	35 - 40	50 - 60
	Nm	26 - 32.5	45.5 - 52	65 - 78
13"	ft-lbs	20 - 25	35 - 40	50 - 60
	Nm	26 - 32.5	45.5 - 52	65 - 78
14"	ft-lbs	20 - 25	50 - 60	90 - 120
	Nm	26 - 32.5	65 - 78	117 - 156
15"	ft-lbs	20 - 25	50 - 60	90 - 120
	Nm	26 - 32.5	65 - 78	117 - 156
16"	ft-lbs	20 - 25	50 - 60	90 - 120
	Nm	26 - 32.5	65 - 78	117 - 156

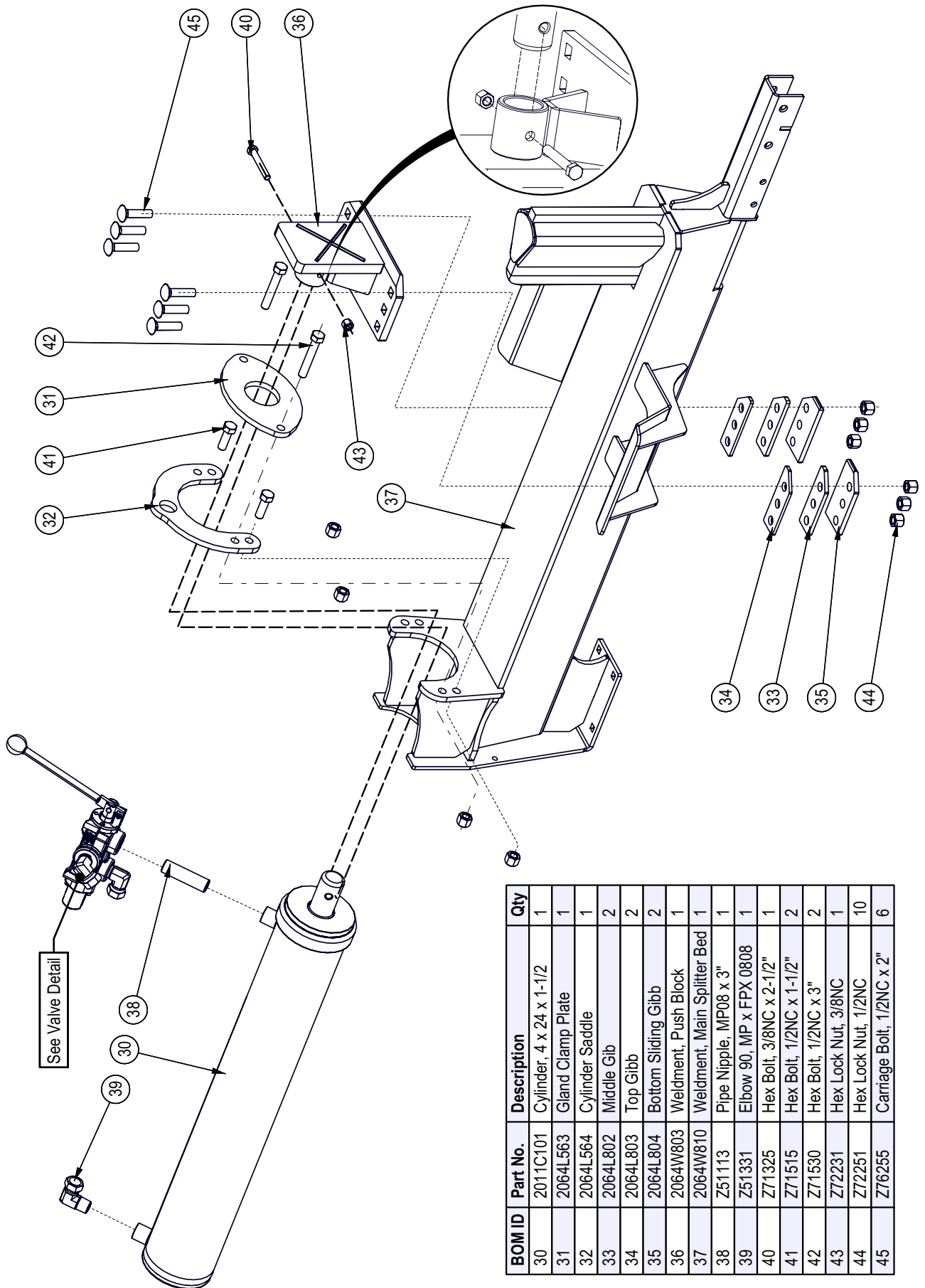


Main Parts



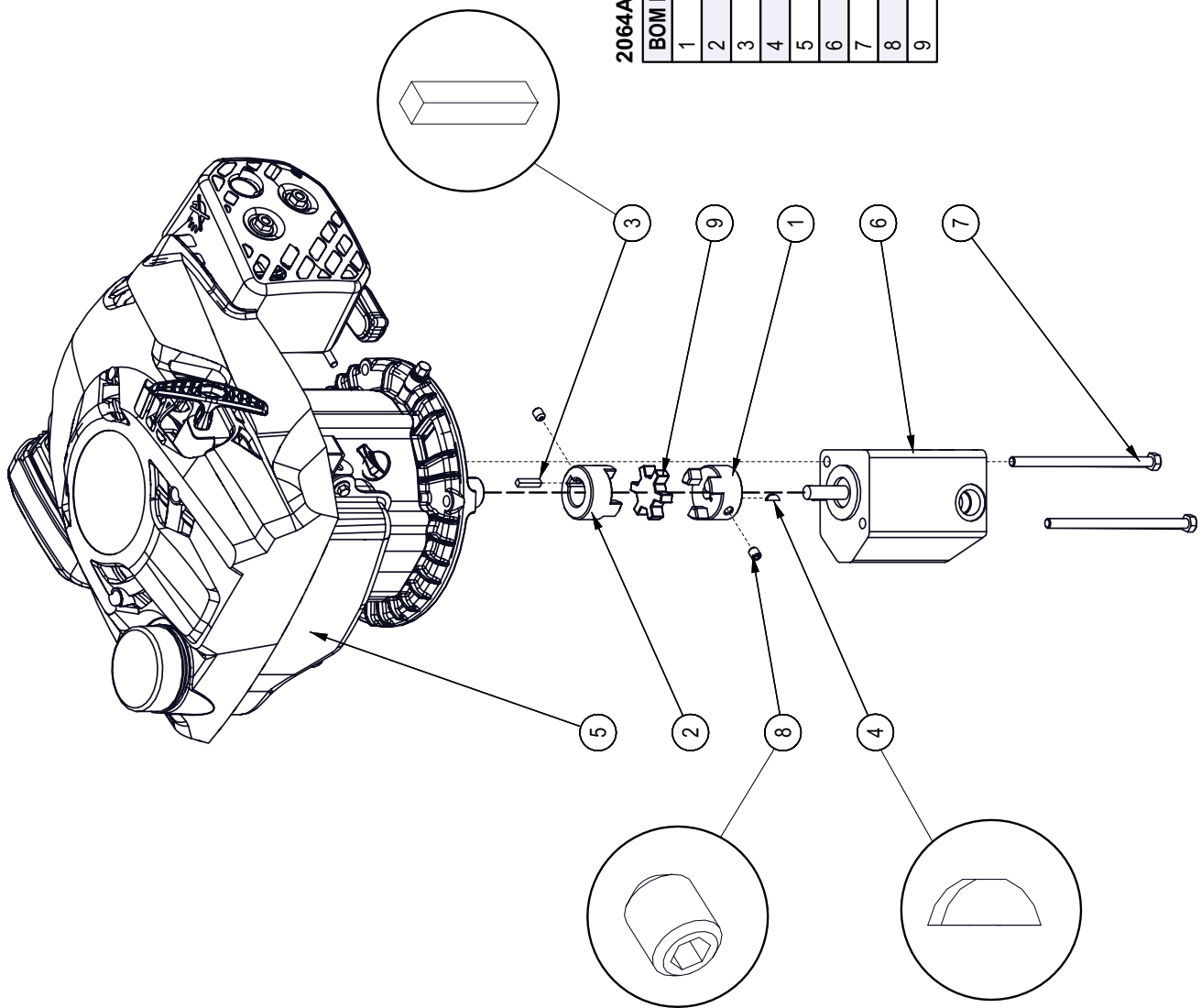
BOM ID	Part No.	Description	Qty
1	2064A801	Horizontal Cylinder Assembly	1
2	2064W804	Tank, Axle and Mount	1
3	2064A505	Assy. Subaru Engine - 11gpm Pump	1
4	2064L832	Leg	1
5	6011L128	Single Hose Clamp	1
6	Z12432	Snap Lock Pin, 3/8" x 2-1/2"	1
7	Z51221	Straight, MP x FP 1208	1
8	Z51331	Elbow 90, MP x FPX 0808	1
9	Z51383	Elbow 90, MORB x FPX 0808	1
10	Z55301	Particulate Filter, FP12	1
11	Z55302	Filter Cap, MP12 x FP12	1
12	Z55402	Vented Plug Dipstick x 5"	1
13	Z71210	Hex Bolt, 5/16NC x 1"	1
14	Z71215	Hex Bolt, 5/16NC x 1-1/2"	4
15	Z71330	Hex Bolt, 3/8NC x 3"	1
16	Z71530	Hex Bolt, 1/2NC x 3"	2
17	Z72221	Hex Lock Nut, 5/16NC	8
18	Z72231	Hex Lock Nut, 3/8NC	5
19	Z72251	Hex Lock Nut, 1/2NC	2
20	Z76232	Carriage Bolt, 3/8NC x 1-1/4"	4
21	Z79401	Hose Clamp, SAE #16 (1-1/2")	2
22	Z91202	Idle Hub Assy, 1000lbs x 4on4" x 1"	2
23	Z91301	4.80-8 LRB SportTrail 4on4"	2
24	Z91614	Hitch Coupler, 2" Ball x 2" x 3500lbs	1
25	Z92303	Safety Chain, 1/4" x 2ft with Snap	2
26	Z96503	Manual Tube, 3-1/2" Short	1

Horizontal Cylinder Assembly



BOM ID	Part No.	Description	Qty
30	2011C101	Cylinder, 4 x 24 x 1-1/2	1
31	2064L563	Gland Clamp Plate	1
32	2064L564	Cylinder Saddle	1
33	2064L802	Middle Gibb	2
34	2064L803	Top Gibb	2
35	2064L804	Bottom Sliding Gibb	2
36	2064W803	Weldment, Push Block	1
37	2064W810	Weldment, Main Splitter Bed	1
38	Z51113	Pipe Nipple, MP08 x 3"	1
39	Z51331	Elbow 90, MP x FFX 0808	1
40	Z71325	Hex Bolt, 3/8NC x 2-1/2"	1
41	Z71515	Hex Bolt, 1/2NC x 1-1/2"	2
42	Z71530	Hex Bolt, 1/2NC x 3"	2
43	Z72231	Hex Lock Nut, 3/8NC	1
44	Z72251	Hex Lock Nut, 1/2NC	10
45	Z76255	Carriage Bolt, 1/2NC x 2"	6

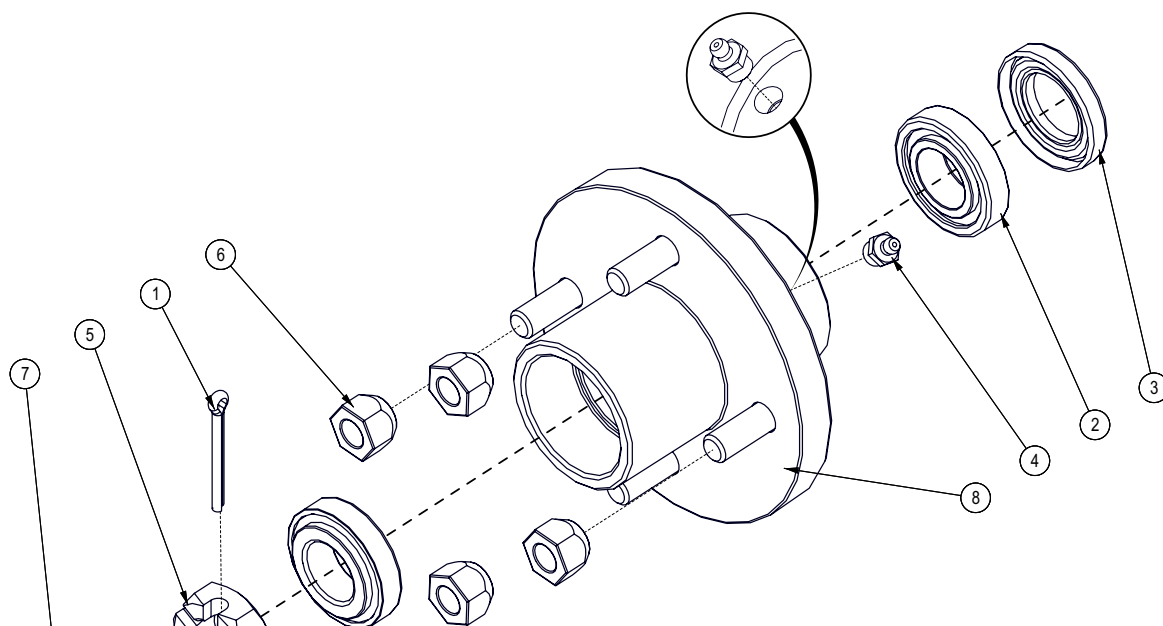
Engine & Pump Assembly



2064A505 ENGINE & PUMP ASSEMBLY

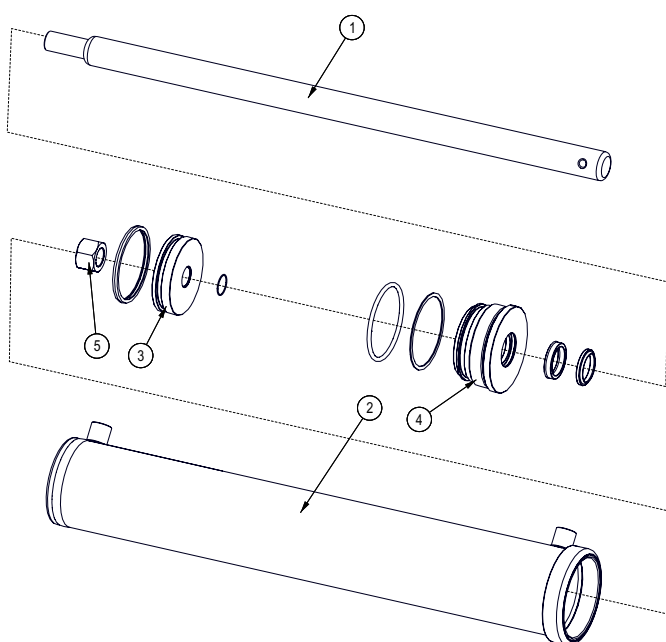
BOM ID	Part No.	Description	Qty
1	Z46407	Shaft Coupling, L075 x 7/16"	1
2	Z46433	Shaft Coupling, L075 x 7/8" w/ 3/16" Keyway	1
3	Z46521	Key, 3/16" x 3/16" x 7/8"	1
4	Z46591	Woodruff Key, 3/32" x 1/2"	1
5	Z47711	Subaru EA190V5003M, Rope	1
6	Z53201	Two-Stage Pump, 11GPM	1
7	Z71255	Hex Bolt, 5/16NC x 5-1/2"	2
8	Z74121	Set Screw, 5/16NC x 3/8"	2
9	Z46408	Spider, L075	1

Hub Assembly



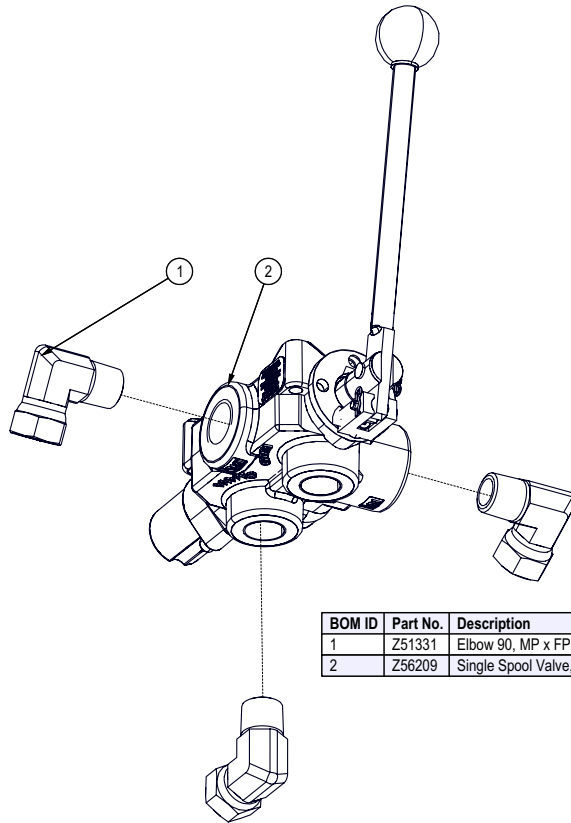
BOM ID	Part No.	Description	Qty
1	Z12321	Cotter Pin, 3/16" x 1-3/4"	1
2	Z23201	Roller Bearing, L44643 L44610	2
3	Z28301	Double Lip Seal, 1-1/4"	1
4	Z29201	Grease Fitting, MP02	1
5	Z72691	Castle Nut, 1NF x 9/16" Thick	1
6	Z72931	Lug Nut, 1/2NF	4
7	Z91801	Dust Cap, 1.98 Bore	1
8	Z91201	Hub, 1000lbs x 4on4	1

Cylinder Assembly



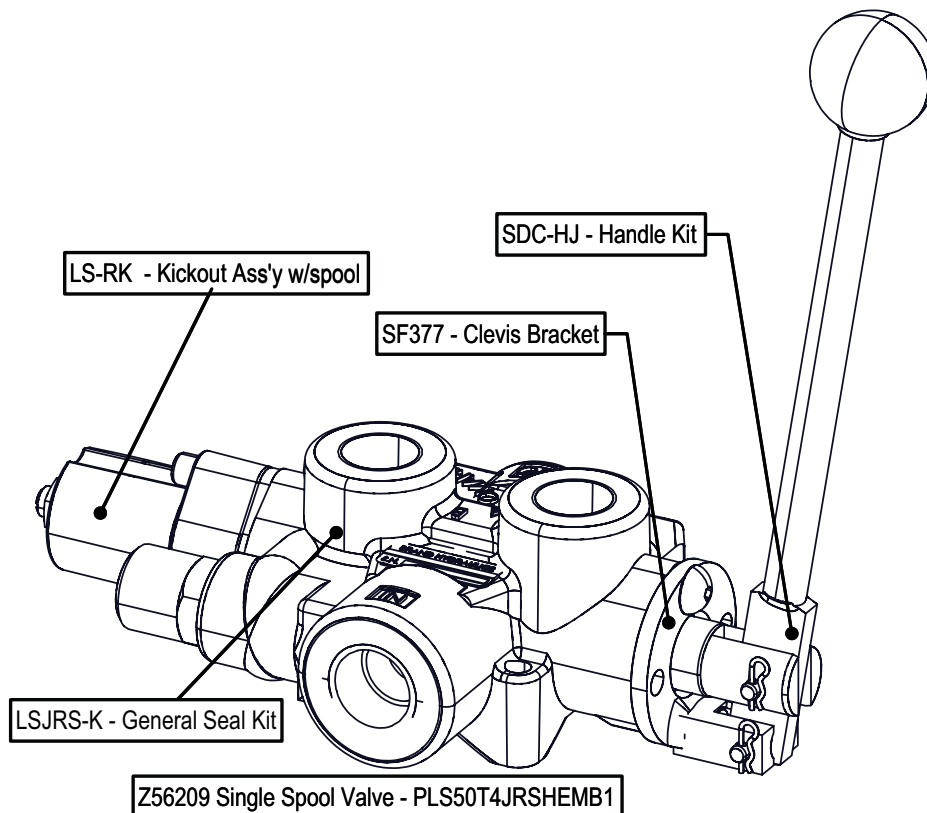
BOM ID	Part No.	Description	Qty
1	2011C1012	Rod, 1-1/2 x 1	1
2	2011C1014	Barrel, 4"	1
3	P100-400SP	Piston, 4" Bore	1
4	G400-150S	Gland, 4" x 1-1/2"	1
5	Z72276	Hex Lock Nut 1NF Grade 8	1

Valve Assembly

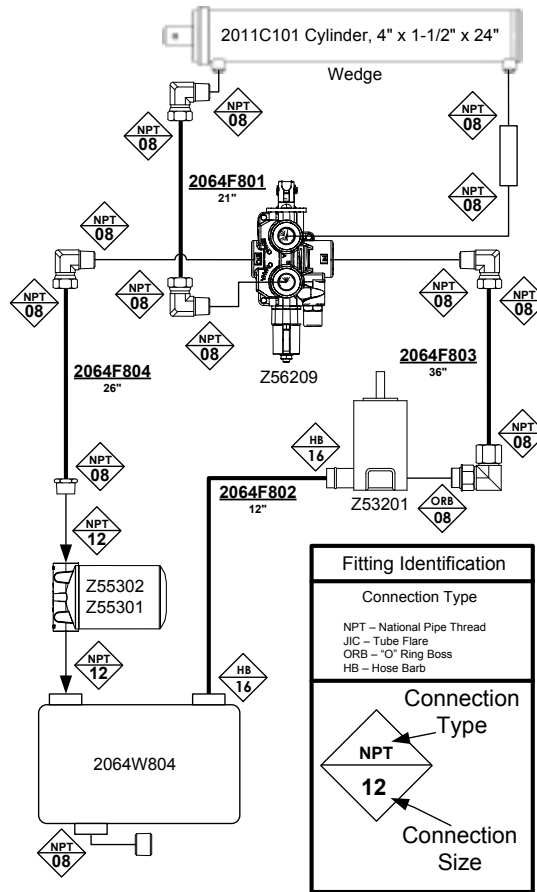


BOM ID	Part No.	Description	Qty
1	Z51331	Elbow 90, MP x FPX 0808	3
2	Z56209	Single Spool Valve, OC Tandem SCDK x 18GPM	1

Z56209 Service Kits



Hydraulic Schematic



Hydraulic Hose List

PART NUMBER	DESCRIPTION	QTY
2064F801	1/2" Hose, MP08 x MP08 x 21"	1
2064F802	Suction Hose, 1"x 12"	1
2064F803	1/2" Hose, MP08 x MP08 x 36"	1
2064F804	1/2" Hose, MP08 x MP08 x 26"	1

Label Layout



Z94239 x 1



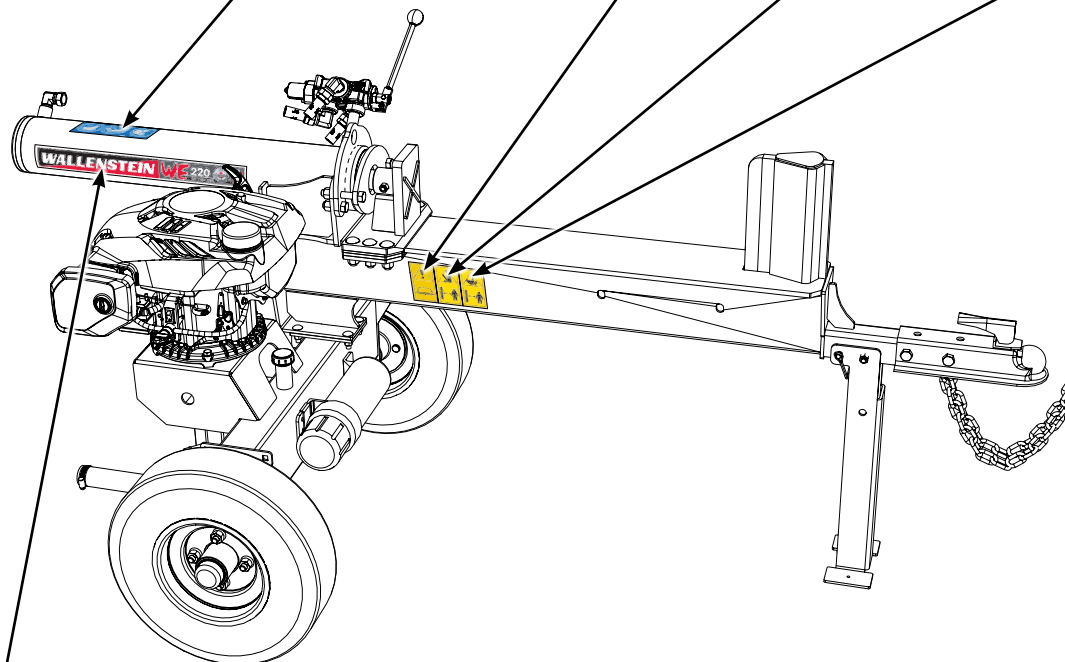
Z94119 x 2



Z94123 x 2



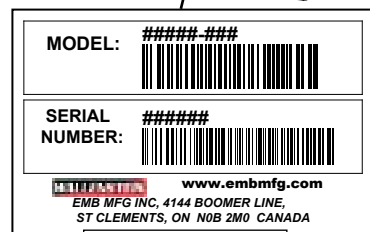
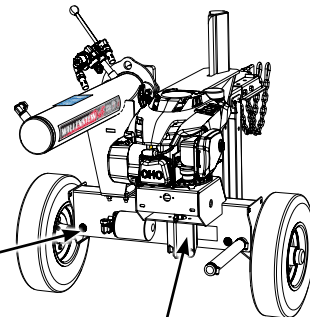
Z94124 x 2



WE220 Z94665 x 2



Z94428 x 2

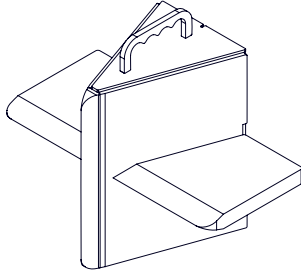


Serial Location

Accessories

Call your dealer for pricing and availability

#W4110



#W4110 4 Way Wedge

Boost your productivity and make quick work out of logs by splitting four pieces at once. This is an ideal way to save time.

#W4204 All Weather Wood Splitter Cover

Heavy duty industrial material, made in Canada Helps protect your splitter from harsh elements



**#Z97059 WE220 & WE230
WOODSPLITTERS OPERATOR'S MANUAL**

Available as a download at
www.wallensteinequipment.com