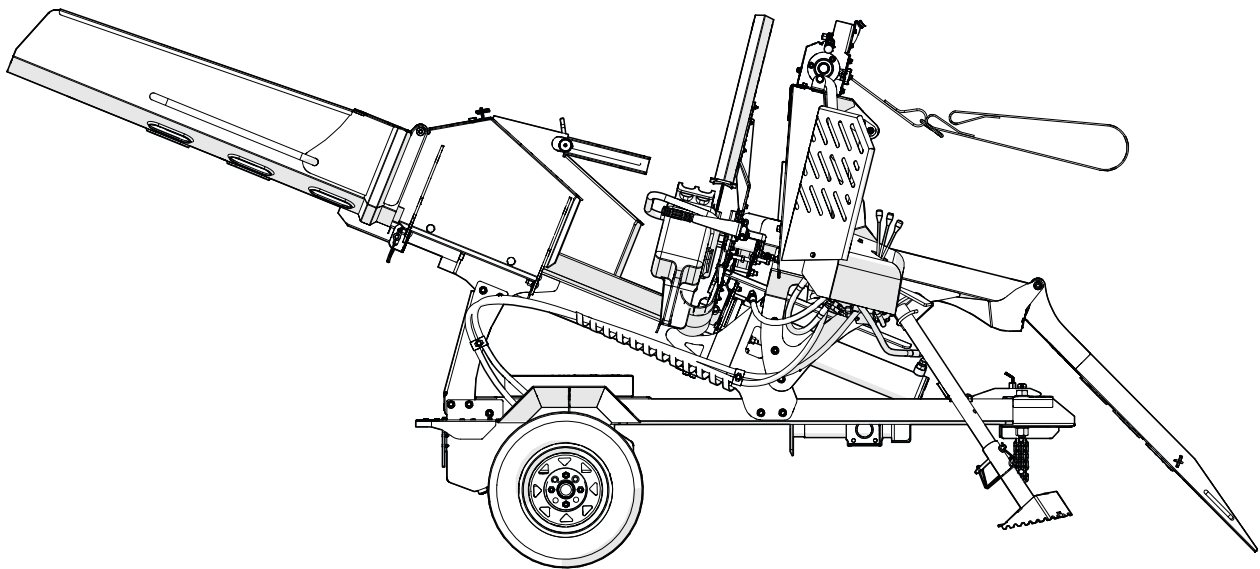


PARTS MANUAL

Serial number 2E9US1119NS01000 to 2E9US1111PS010053, 1100000 and up

WP525 Firewood Processor



Foreword

This Wallenstein parts manual is prepared to assist customers in ordering quality OEM replacement parts.

Regular maintenance combined with replacing old, worn or broken parts with the correct OEM parts is essential in prolonging the life of your Wallenstein product. Refer to this manual to identify replacement parts.

To order parts, contact your Wallenstein dealer or distributor. Have the product model and serial number handy.

If your dealer is no longer available, please go to WallensteinEquipment.com. At the bottom of the page, select Dealer Locator.

All information contained in this parts manual is current as per the revision date at the bottom of the page. Wallenstein reserves the right to change product specifications at any time without notice.

If your product specifications differ from those contained in this manual, contact Wallenstein for current information.

Reproduction of information in this parts manual is prohibited without prior written permission from Wallenstein Equipment Inc.

Wallenstein Equipment Inc. • © 2024

WARNING!

For safety, operation, and maintenance information, see the Operator's Manual.

Maintenance should be performed by trained personnel only.

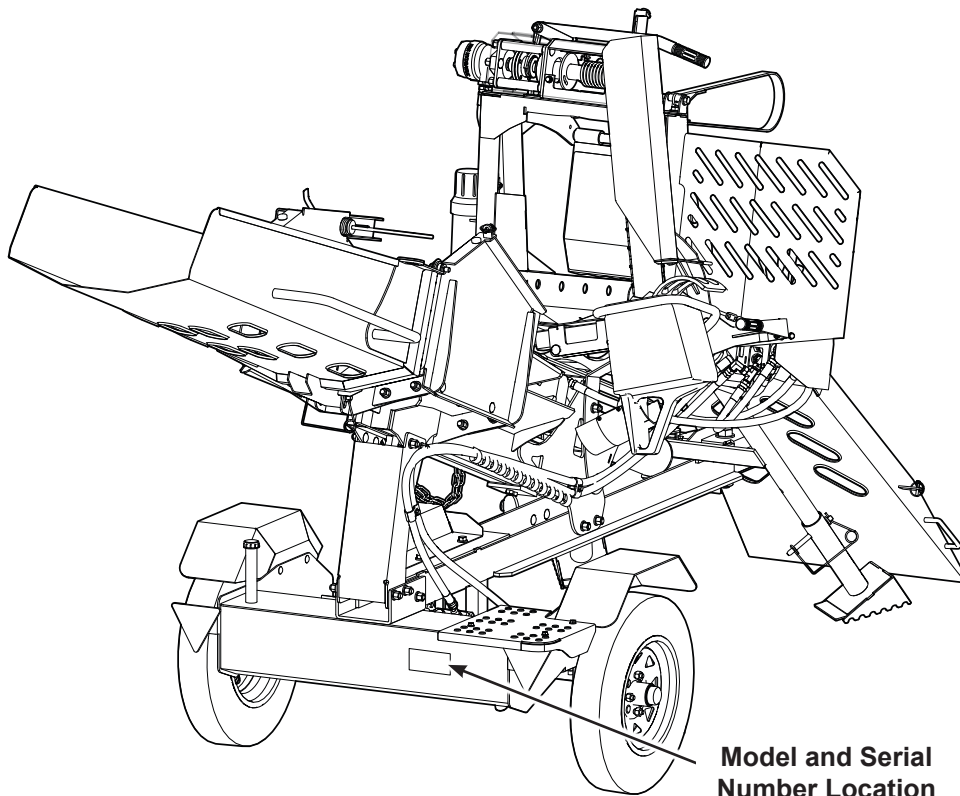
Serial Number Location

Always provide the model and serial number of your Wallenstein product when ordering parts or requesting service or other information. The serial number is on the product information plate as shown below.

Record your product information here for future reference.

Model _____

Serial Number _____



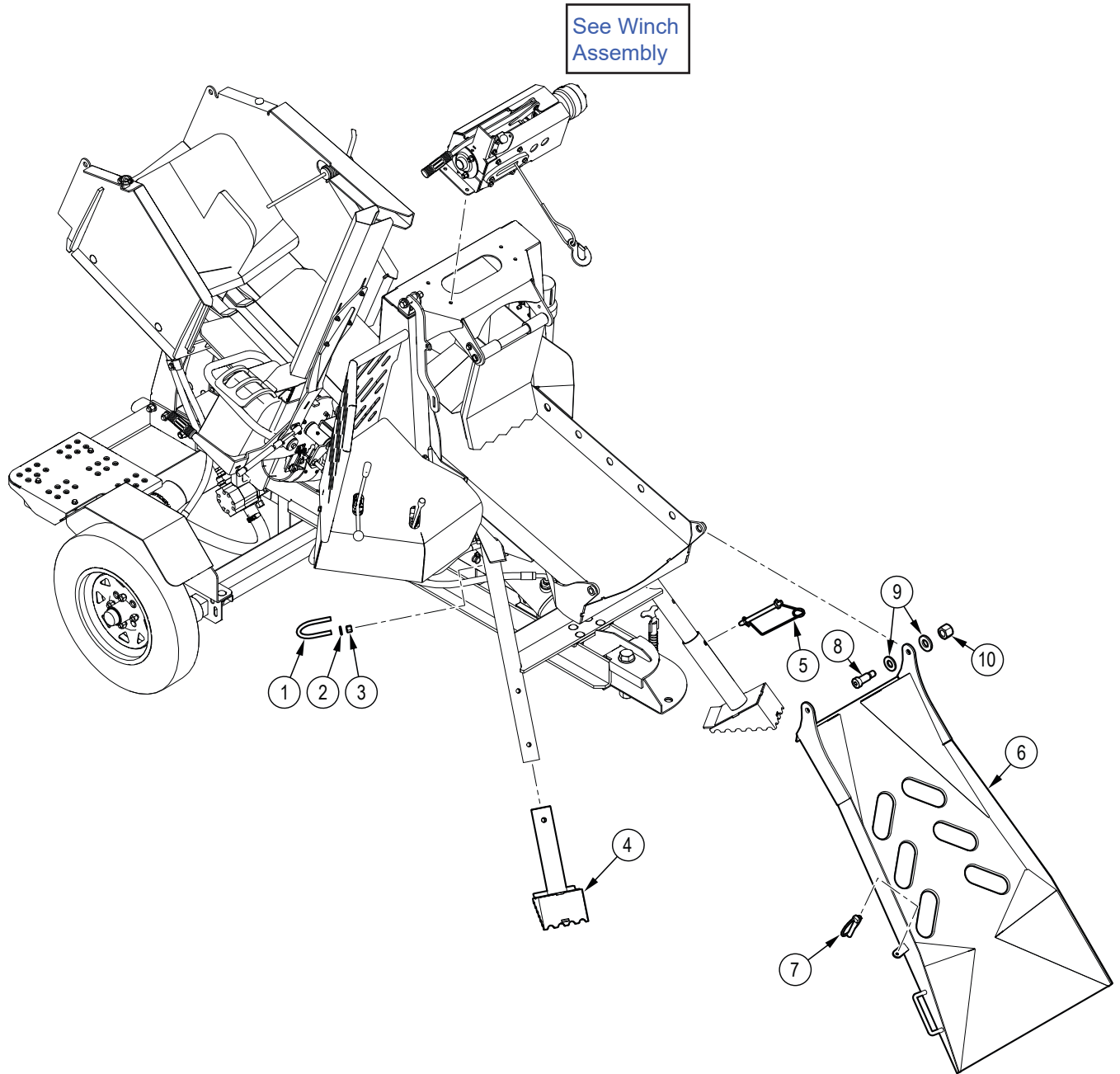
Model and Serial
Number Location

WallensteinEquipment.com

Contents

Lead In Chute Assembly	4
Log Hold Down Assembly.....	5
Splitter Main Frame Assembly.....	6
Log Chute Assembly	7
Running Gear	8
Hitch Assembly	9
Hydraulic Splitter Assembly	10
Engine and Pump Assembly.....	11
Hydraulic Winch.....	12
Winch Drum.....	13
P305 Light Bar Option	14
Valve Assembly	15
Hydraulic Circuit	16
Pivoting Chain Saw Holder	17
Decal Layout.....	18
Accessories	21
Bolt Torque	22
Hydraulic Fitting Torque.....	23
Wheel Lug Nut Torque	23

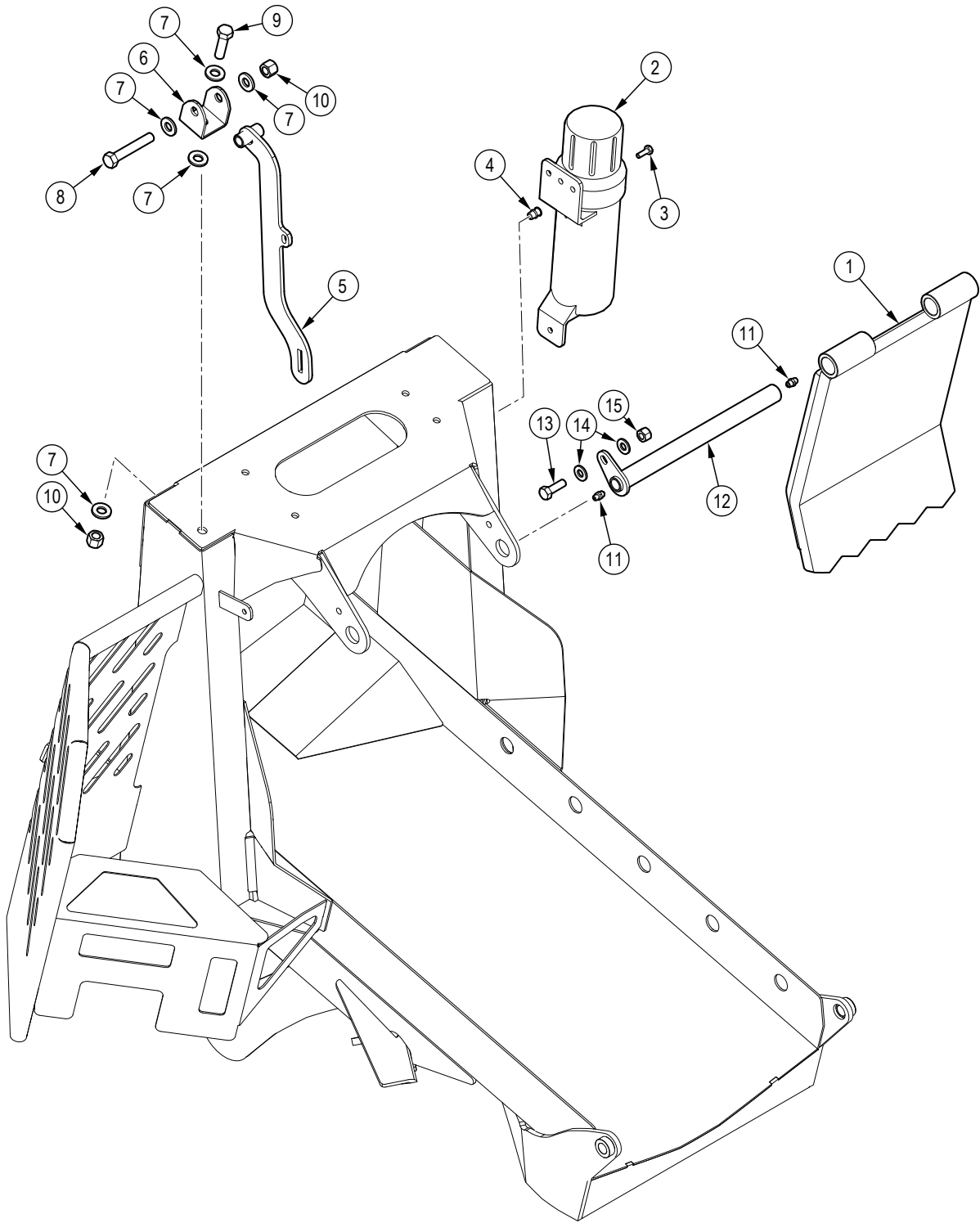
Lead In Chute Assembly



Item No.	Part No.	Description	Qty
1	Z79801	U-Bolt, 3/8" x 2.5" ID x 3-1/8" Ht.	2
2	Z73131G8	SAE Washer, 3/8" Grade 8	4
3	Z72231	Hex Lock Nut, 3/8NC	4
4	2252W309	Foot, Jack	2
5	Z12441	Snap Lock Pin, 1/2" x 4-1/2"	2
6	2252W011	Entry Chute	1

Item No.	Part No.	Description	Qty
7	Z12120	Lynch Pin, 1/4"	1
8	Z75561	Shoulder Bolt, 5/8" x 1-1/8"	2
9	Z73161G8	SAE Washer, 5/8" Grade 8	4
10	Z72251	Hex Lock Nut, 1/2NC	2

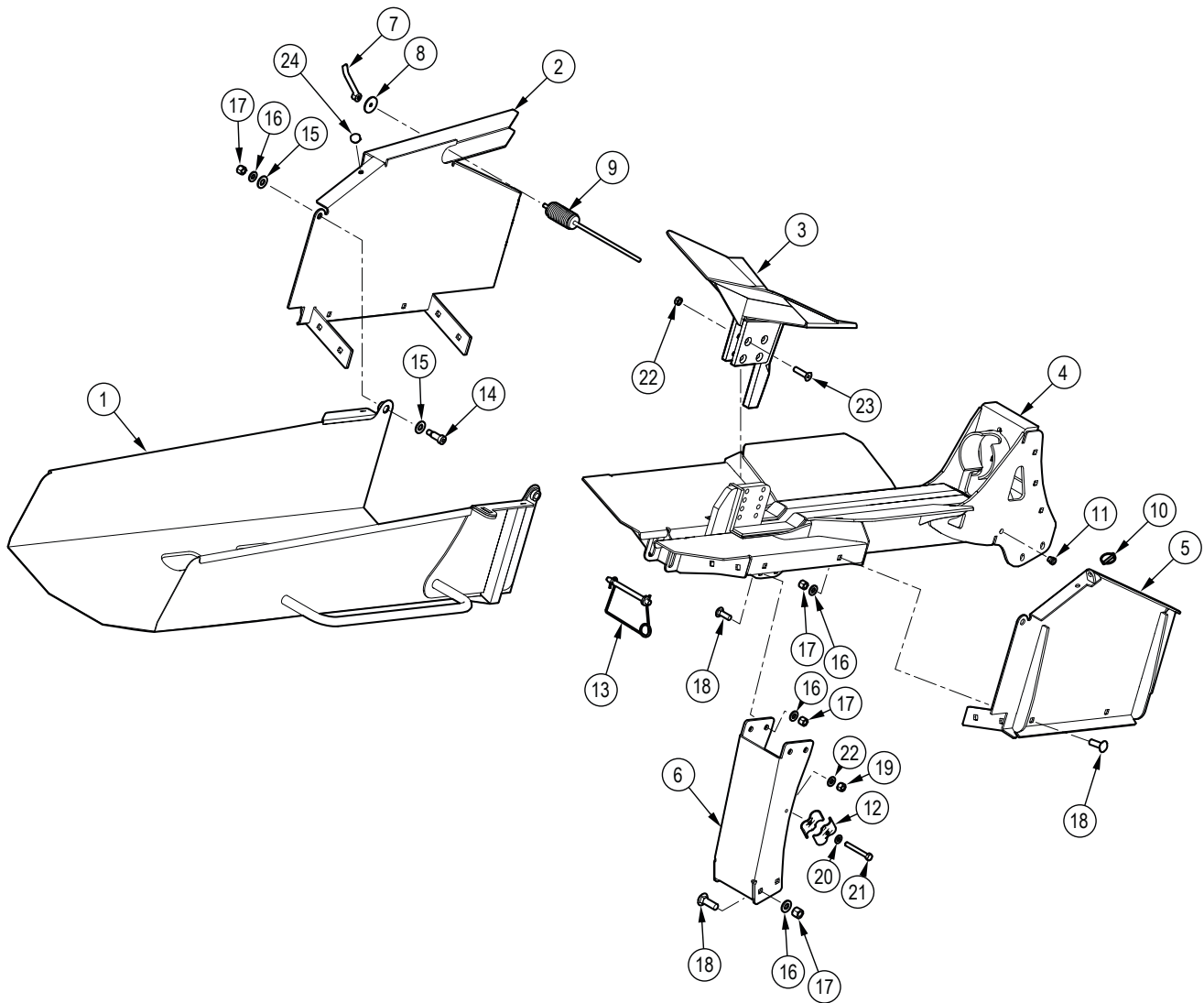
Log Hold Down Assembly



Item No.	Part No.	Description	Qty
1	2252W012	Weldment, Log Hold Down	1
2	Z96503	Manual Tube, 3-1/2" Short	1
3	Z71107	Hex Bolt, 1/4NC x 3/4"	3
4	Z72962	Rivet Nut, 1/4NC x 260	3
5	2252W048	Arm, Log Chute Lock	1
6	2252L269	Clevis, Latch Mount	1
7	Z73151G8	SAE Washer, 1/2" Grade 8	5
8	Z71530	Hex Bolt, 1/2NC x 3"	1

Item No.	Part No.	Description	Qty
9	Z71517	Hex Bolt, 1/2NC x 1-3/4"	1
10	Z72251	Hex Lock Nut, 1/2NC	2
11	Z29202	Grease Fitting, 1/4NF	2
12	2252W013	Weldment, Pin, Log Hold Down	1
13	Z71210	Hex Bolt, 5/16NC x 1"	1
14	Z73122G8	Z73122G8	2
15	Z72221	Hex Lock Nut, 5/16NC	1

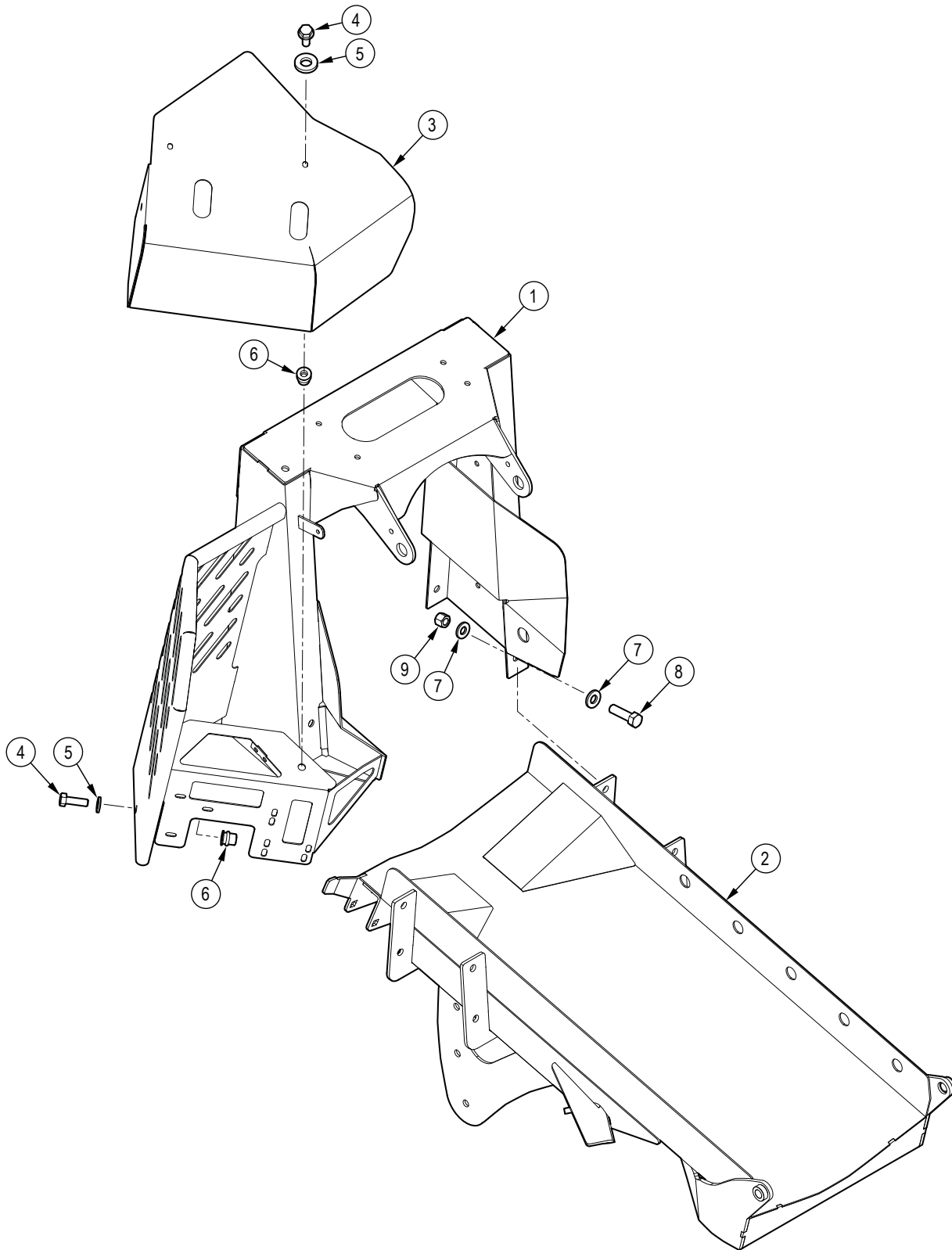
Splitter Main Frame Assembly



Item No.	Part No.	Description	Qty
1	2252W009	Weldment, Exit Chute	1
2	2252W044	Split Box, RH	1
3	2252W035	3 Way Wedge	1
4	2252W300	Cylinder Weldment, WPR525	1
5	2252W043	Split Box, LH	1
6	2252L319	Splitter to Tank Support	1
7	Z72981	Easy-Grip Handle	1
8	2250L228	Base, Log Spring	1
9	2250W055	Weldment, Log Stop	1
10	Z12120	Lynch Pin, 1/4"	1
11	Z72956	Rivet Nut, 5/16NC x 150	4

Item No.	Part No.	Description	Qty
12	2054L412	Hose Clamp, 2 x 1/2"	2
13	Z12441	Snap Lock Pin, 1/2" x 4-1/2"	1
14	Z75561	Shoulder Bolt, 5/8" x 1-1/8"	2
15	Z73161G8	SAE Washer, 5/8" Grade 8	4
16	Z73151G8	SAE Washer, 1/2" Grade 8	28
17	Z72251	Hex Lock Nut, 1/2NC	2
18	Z76251	Carriage Bolt, 1/2NC x 1-1/2"	24
19	Z72221	Hex Lock Nut, 5/16NC	1
20	Z73122G8	SAE Washer, 5/16" Grade 8	1
21	Z71225	Hex Bolt, 5/16NC x 2-1/2"	1
22	Z72452G8	Jam Lock Nut, 1/2NF Grade 8	4
23	Z75255G8	FHCS, 1/2NF x 2" Grade 8	4
24	Z19909	Rubber Bumper, 7/16" x 1"	2

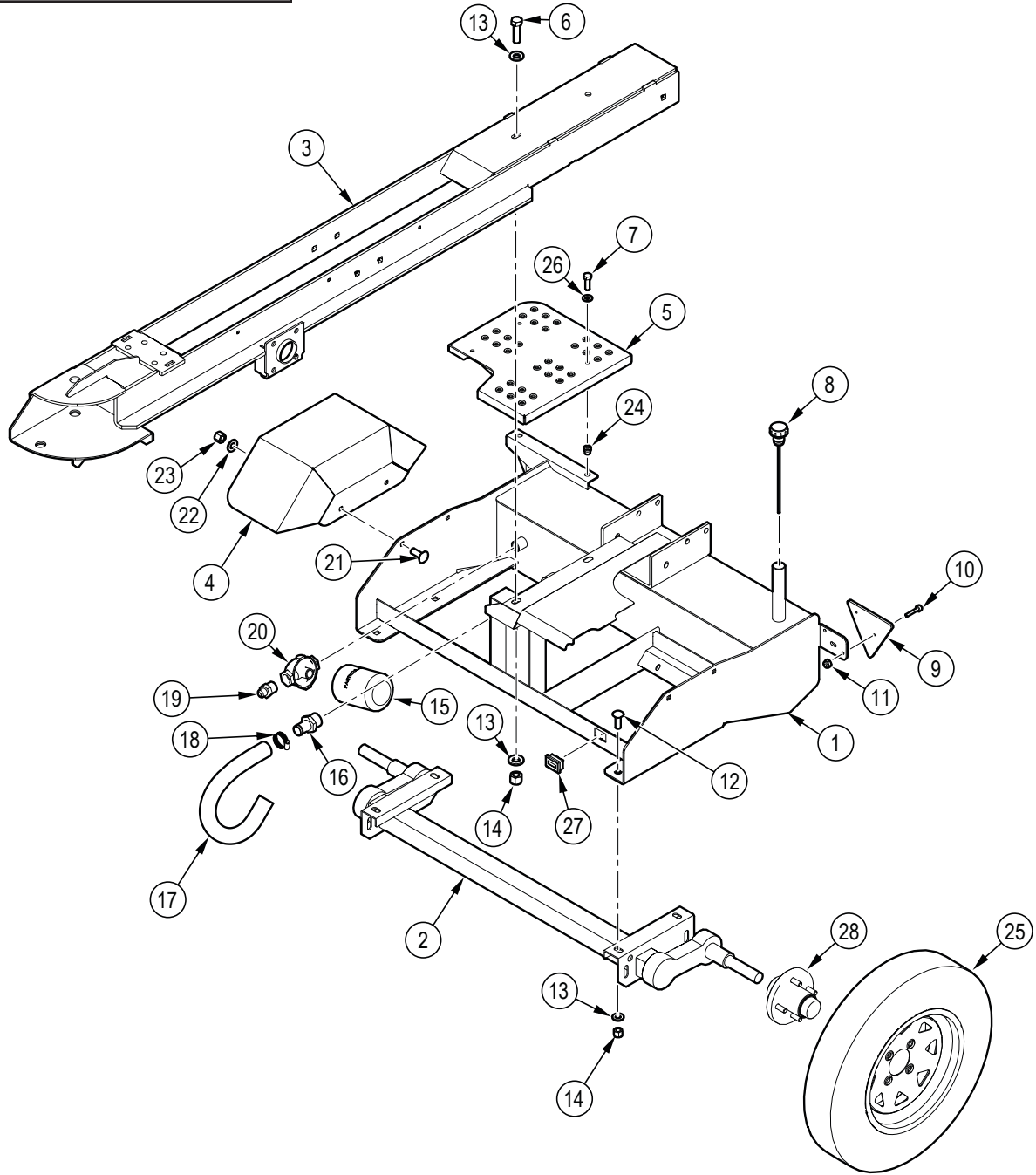
Log Chute Assembly



Item No.	Part No.	Description	Qty
1	2252W305	Winch Tower	1
2	2252W301	Log Bed	1
3	2252L325	Cover, Control Panel	1
4	Z71210	Hex Bolt, 5/16NC x 1"	3
5	Z73122G8	SAE Washer, 5/16" Grade 8	3

Item No.	Part No.	Description	Qty
6	Z72956	Rivet Nut, 5/16NC x 150	3
7	Z73151G8	SAE Washer, 1/2" Grade 8	8
8	Z71517	Hex Bolt, 1/2NC x 1-3/4"	4
9	Z72251	Hex Lock Nut, 1/2NC	4

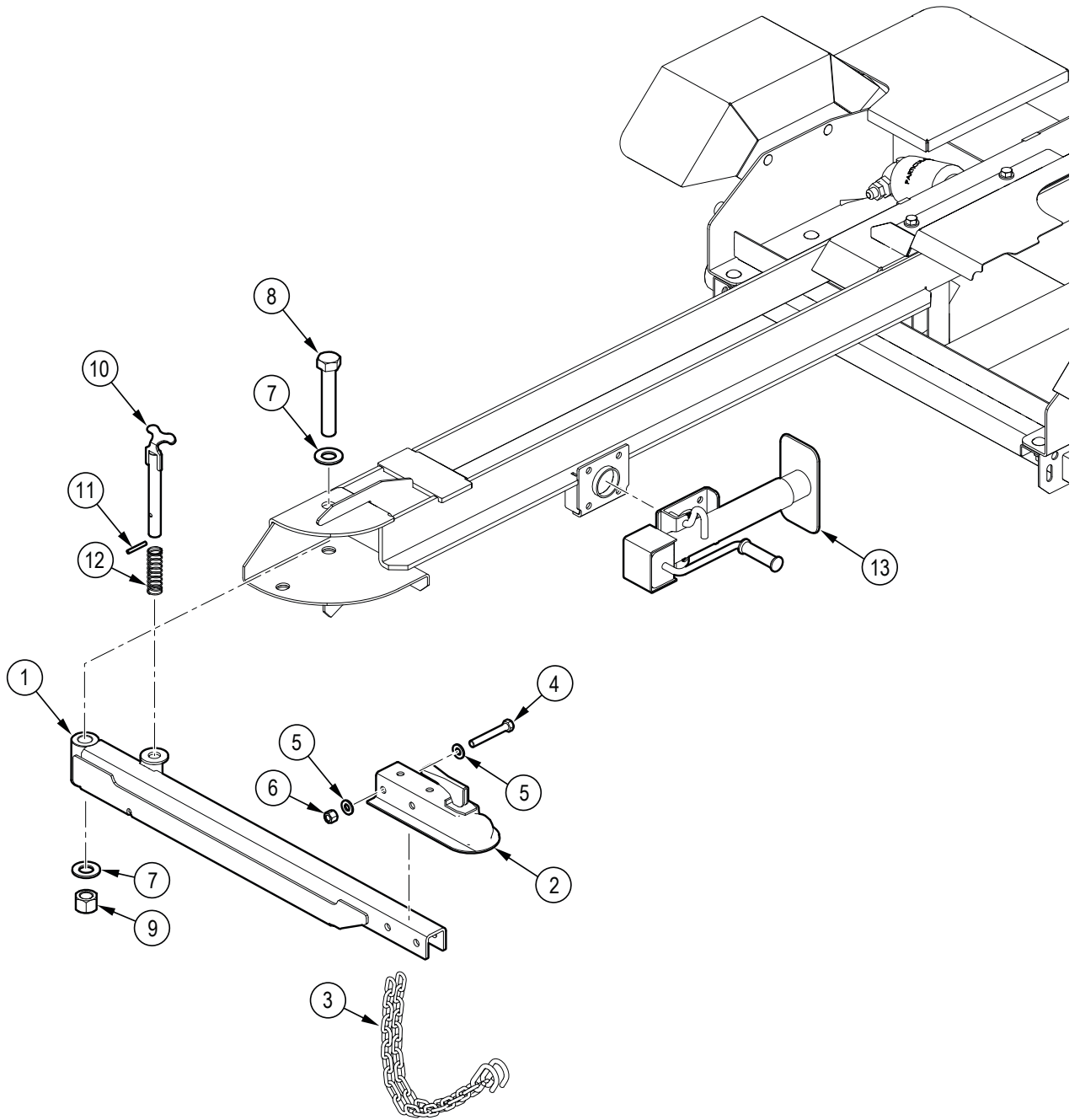
Running Gear



Item No.	Part No.	Description	Qty
1	2252W302	Tank Axle	1
2	Z91133	#9 Full Flex Axle, 1800lbs	2
3	2252W303	Trailer Tongue Frame	2
4	2252W029	Fender Weldment, LH	4
5	2252L357	Cleanout Step	4
6	Z71517	Hex Bolt, 1/2NC x 1-3/4"	2
7	Z71210	Hex Bolt, 5/16NC x 1"	3
8	Z55404	Vented Plug Dipstick x 9"	1
9	Z61208	CE Reflector, Triangle x Red	2
10	Z75106	SHCS, #8NC x 3/4"	4
11	Z72202	Hex Lock Nut, #8NC	4
12	Z76251	Carriage Bolt, 1/2NC x 1-1/2"	4
13	Z73151G8	SAE Washer, 1/2" Grade 8	4
14	Z72251	Hex Lock Nut, 1/2NC	2
15	Z55301	Particulate Filter, FP12	1

Item No.	Part No.	Description	Qty
16	Z51796	Straight, MHB x MORB 1616	1
17	2252F301	Suction Hose, 1" x 20"	1
18	Z79401	Hose Clamp, SAE #16 (1-1/2")	2
19	Z51447	Straight, MJIC x MP 0812	1
20	Z55302	Filter Cap, MP12 x FP12	1
21	Z76231	Carriage Bolt, 3/8NC x 1"	4
22	Z73131G8	SAE Washer, 3/8" Grade 8	4
23	Z72231	Hex Lock Nut, 3/8NC	4
24	Z72956	Rivet Nut, 5/16NC x 150	3
25	Z91302	5.30-12 LRC 8PR P811 4on4"	2
26	Z73122G8	Z73122G8	3
27	Z64612	Tach/Hour Meter	1
28	Z91206	Hub Assembly	2

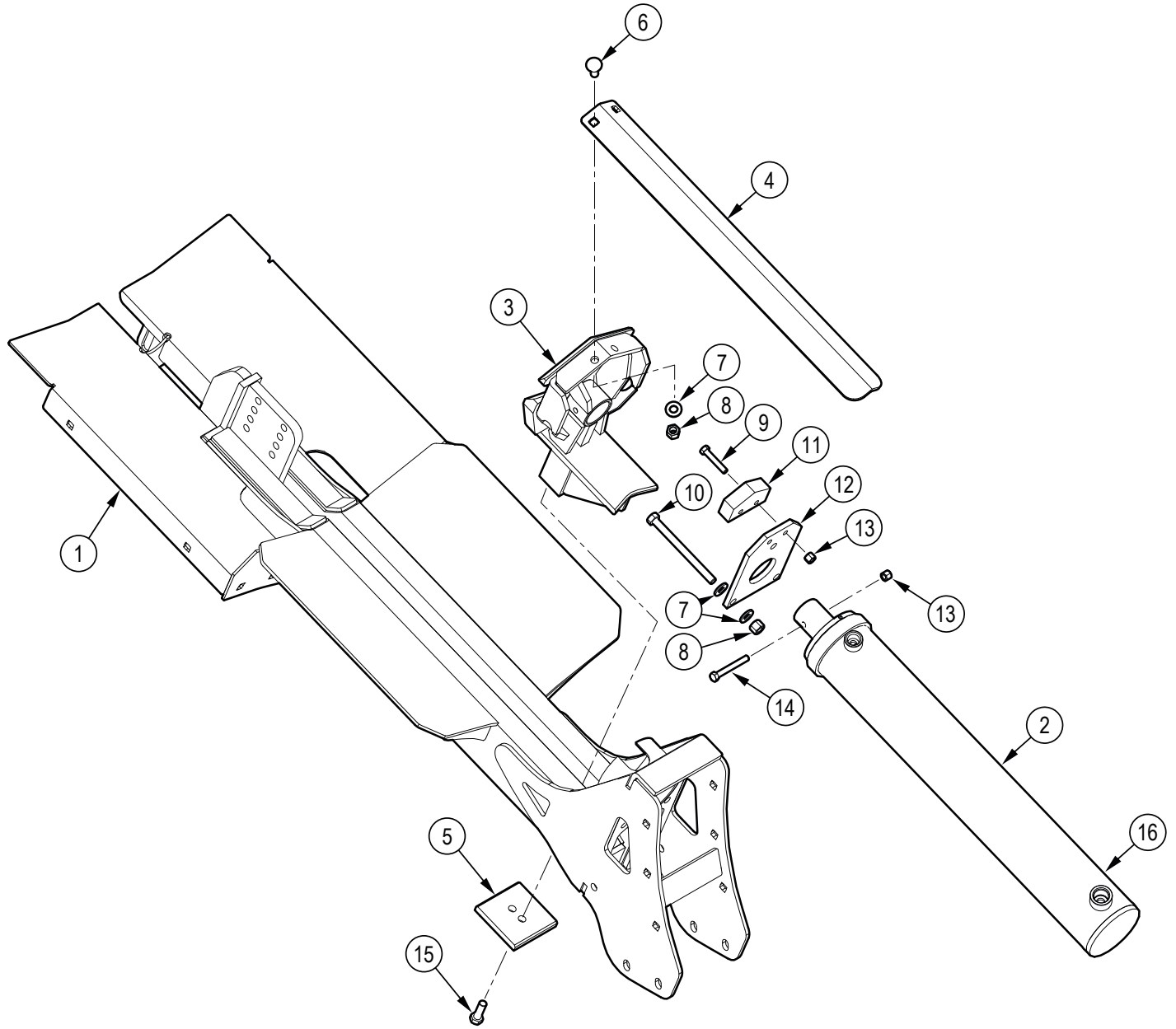
Hitch Assembly



Item No.	Part No.	Description	Qty
1	2252W307	Weldment, Pivot Tongue	1
2	Z91614	Hitch Coupler, 2" 3500lbs	4
3	Z92303	Safety Chain, 1/4" 6,000lbs	2
4	Z71535	Hex Bolt, 1/2NC x 3-1/2"	1
5	Z73151G8	SAE Washer, 1/2" Grade 8	2
6	Z72251	Hex Lock Nut, 1/2NC	1

Item No.	Part No.	Description	Qty
7	Z73191G8	SAE Washer, 1" Grade 8	2
8	Z719111	Hex Bolt, 1NC x 5-3/4"	1
9	Z72291	Hex Lock Nut, 1NC	1
10	2251W040	Locking Pin, Tongue	1
11	Z14172	Roll Pin, 1/4" x 1-3/4"	1
12	Z32307	Comp Spring	1
13	Z91516	Trailer Jack, Side Wind x 2000lbs	2

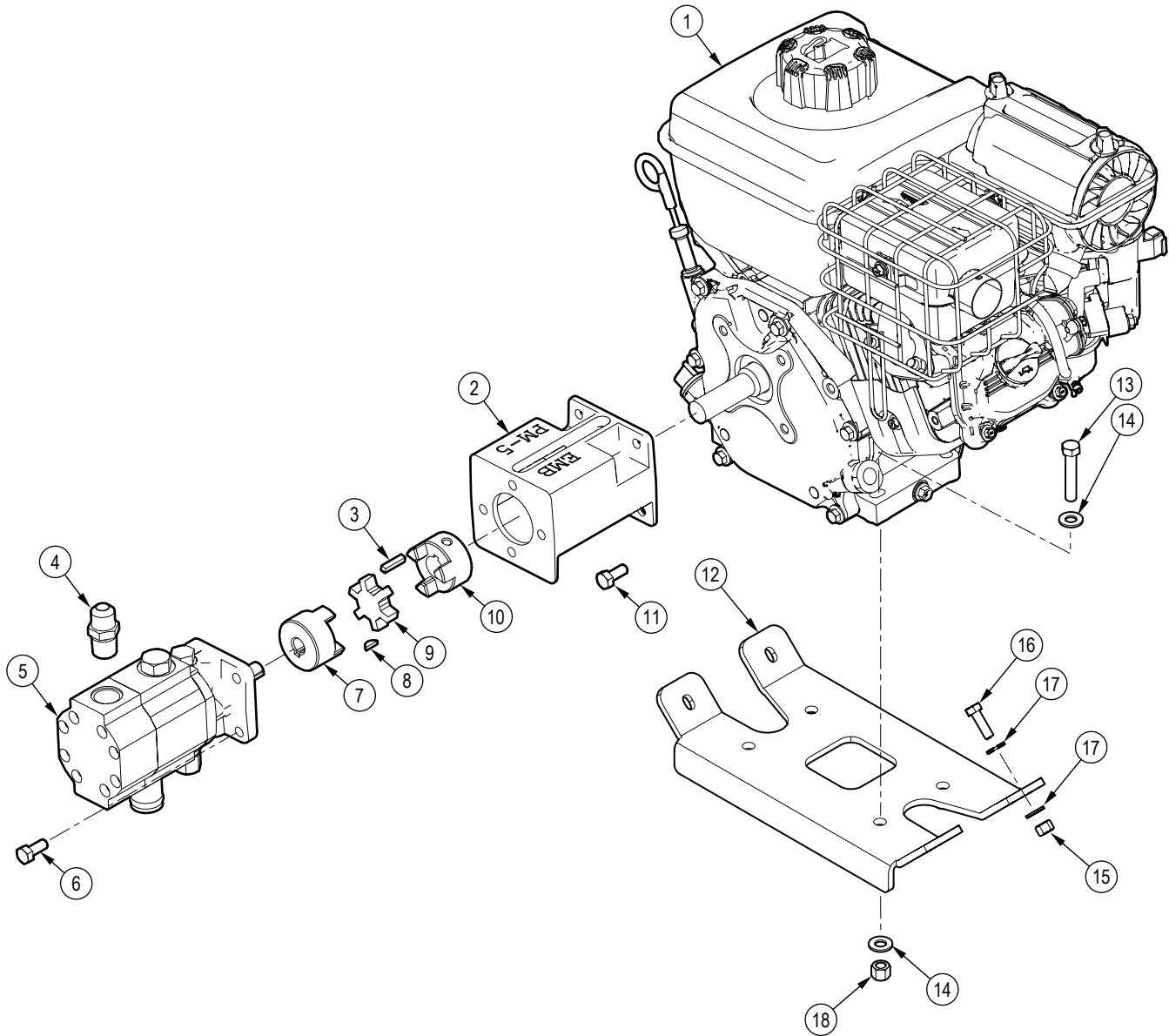
Hydraulic Splitter Assembly



Item No.	Part No.	Description	Qty
1	2252W300	Cylinder Weldment, WPR525	1
2	2073C402	Cylinder, 4 x 24 x 2	1
3	2252W008	Weldment, Push Block	1
4	2252L168	Guard, Cylinder Rod	1
5	2051S117	Sliding Wedge Cap, Bolt-on	1
6	Z76251	Carriage Bolt, 1/2NC x 1-1/2"	2
7	Z73151G8	SAE Washer, 1/2" Grade 8	8
8	Z72251	Hex Lock Nut, 1/2NC	5
9	Z71320	Hex Bolt, 3/8NC x 2"	2

Item No.	Part No.	Description	Qty
10	Z71560	Hex Bolt, 1/2NC x 6"	3
11	2252S013	UHMW Sliding Pad	1
12	2252L170	Plate, Cylinder Retaining	1
13	Z72231	Hex Lock Nut, 3/8NC	3
14	Z71330	Hex Bolt, 3/8NC x 3"	1
15	Z71576G8	Hex Bolt, 1/2NF x 1-1/2" G8	2
16	SLK-SLK4020	Seal Kit (not shown)	1

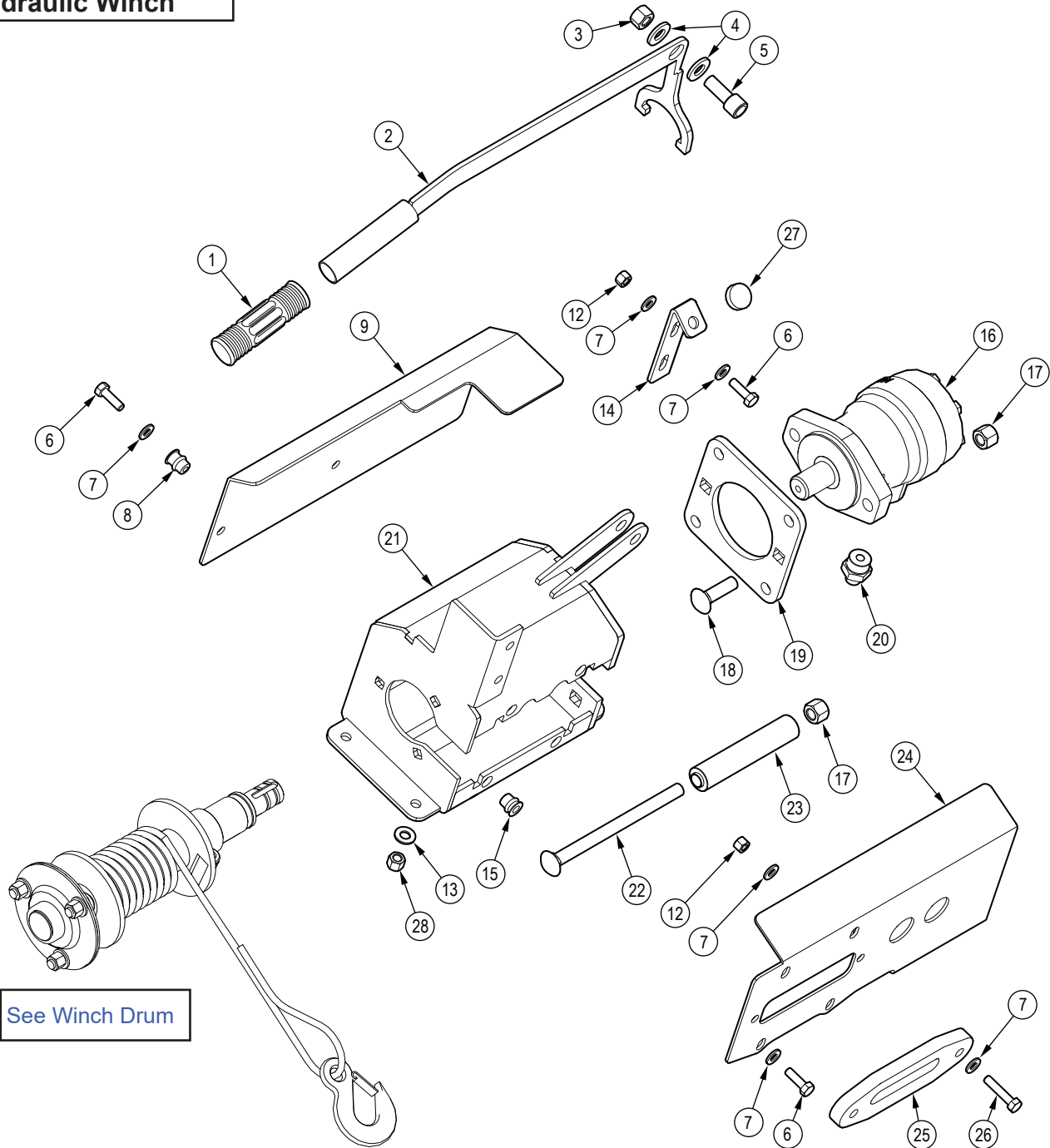
Engine and Pump Assembly



Item No.	Part No.	Description	Qty
1	Z47752	Vanguard® 6.5 hp (203 cc)	1
2	Z53809	Pump Mount, PM-5 / 45	1
3	Z46521	Key, 3/16" x 3/16" x 7/8"	1
4	Z51442	Straight, MJIC x MP 0808	1
5	Z53204	Two-Stage Pump, 11GPM	1
6	Z71207	Hex Bolt, 5/16NC x 3/4"	4
7	Z46410	Shaft Coupling, L075 x 1/2"	1
8	Z46592	Woodruff Key, 1/8" x 1/2"	1
9	Z46408	Spider, L075	1
10	Z46406	Shaft Coupler, L075 x 3/4"	1

Item No.	Part No.	Description	Qty
11	Z71273	Hex Bolt, 5/16NF x 3/4"	4
12	2252L366	Plate, Engine Mount Solid	1
13	Z71320	Hex Bolt, 3/8NC x 2"	4
14	Z73131G8	SAE Washer, 3/8" Grade 8	8
15	Z72221	Hex Lock Nut, 5/16NC	4
16	Z71210	Hex Bolt, 5/16NC x 1"	4
17	Z73122G8	SAE Washer, 5/16" Grade 8	8
18	Z72231	Hex Lock Nut, 3/8NC	4

Hydraulic Winch

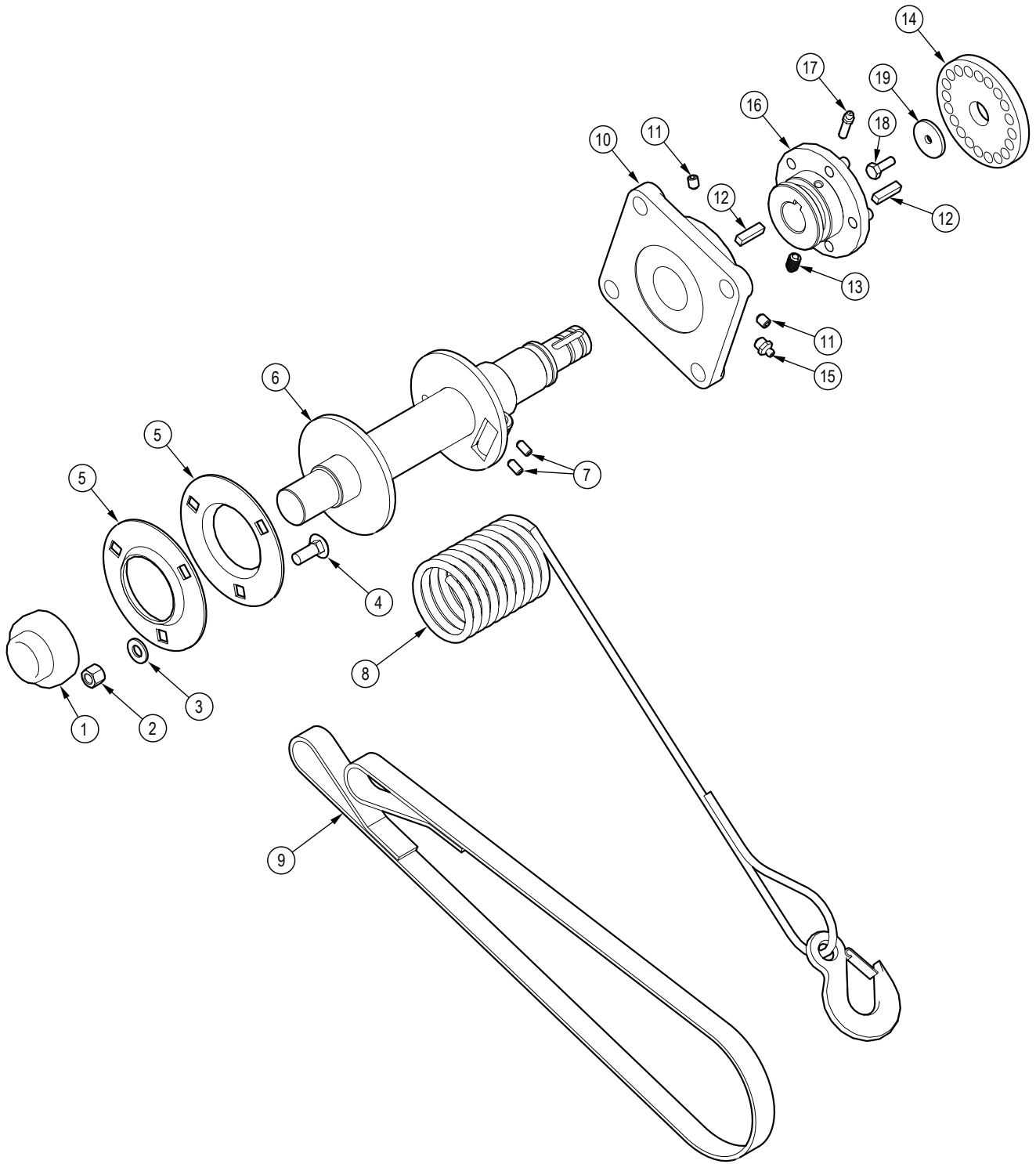


See Winch Drum

Item No.	Part No.	Description	Qty
1	Z19321	Handle Grip, 1"	1
2	2252W039	Arm, Clutch Engage	1
3	Z72251	Hex Lock Nut, 1/2NC	1
4	Z73161G8	SAE Washer, 5/8" Grade 8	2
5	Z75561	Shoulder Bolt, 5/8" x 1-1/8"	1
6	Z71210	Hex Bolt, 5/16NC x 1"	8
7	Z73122G8	SAE Washer, 5/16" G8	10
8	Z72957	Rivet Nut, 5/16NC x 312	2
9	2252L008	Shield, Winch	1
12	Z72221	Hex Lock Nut, 5/16NC	2
13	Z73131G8	SAE Washer, 3/8" G8	4
14	2252L116	Plate, Chute Latch	1

Item No.	Part No.	Description	Qty
15	Z72956	Rivet Nut, 5/16NC x 150	2
16	Z54109	Hydraulic Motor, 100CCR	1
17	Z72251	Hex Lock Nut, 1/2NC	6
18	Z76258	Carriage Bolt, 1/2NC x 1-3/4"	2
19	1024L771	Motor Bearing Interface	1
20	Z51645	Straight, MJIC x MORB 0610	2
21	2252W001	Winch Weldment	1
22	Z76256	Carriage Bolt, 1/2NC x 7"	4
23	2252M022	Motor Bearing Spacer	4
24	2252L007	Guard, Fairlead Side	1
25	2251M003	Synthetic Fairlead	1
26	Z71215	Hex Bolt, 5/16NC x 1-1/2"	2
27	Z19909	Rubber Bumper, 7/16" x 1"	1
28	Z72231	Hex Lock Nut, 3/8NC	4

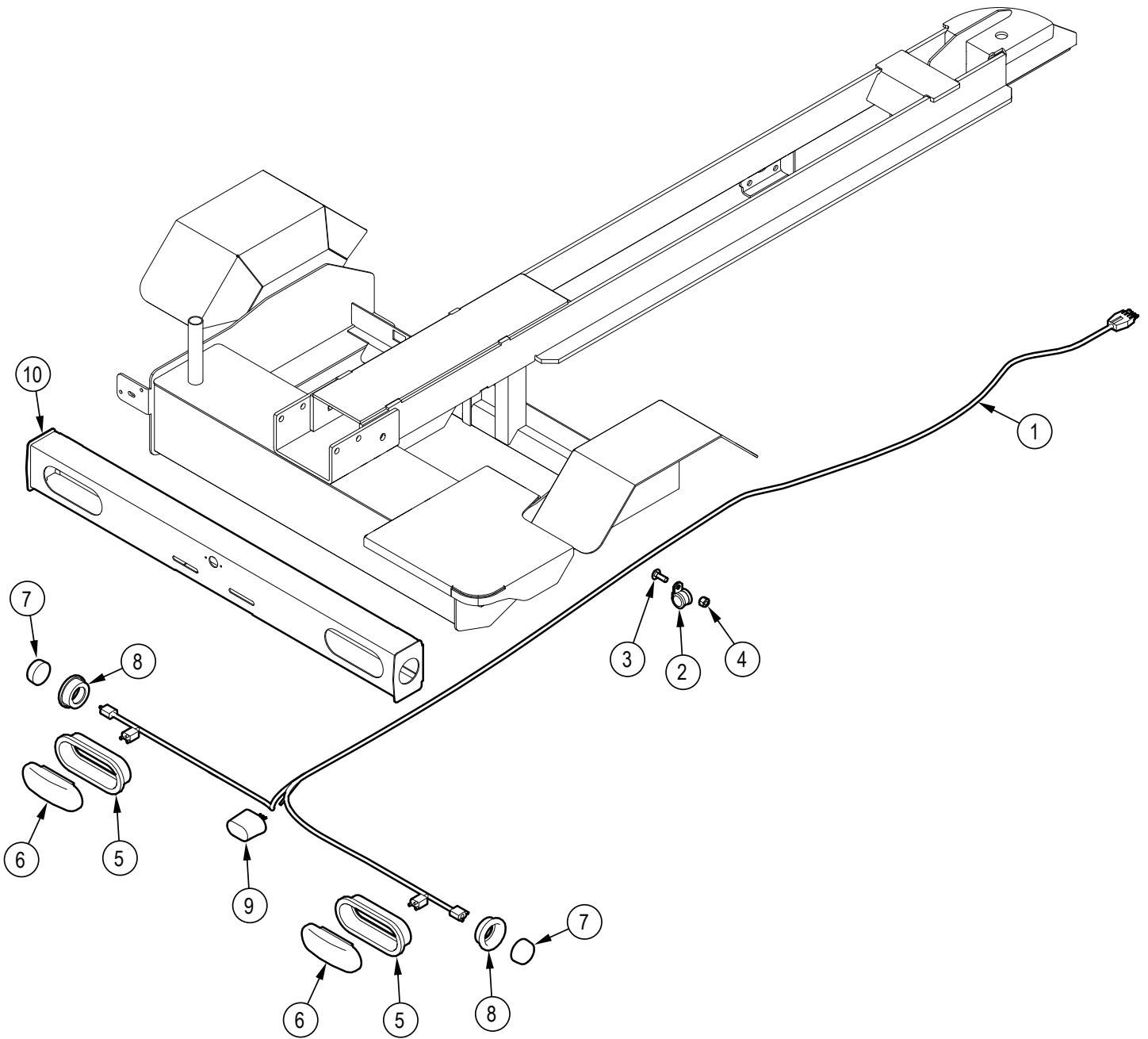
Winch Drum



Item No.	Part No.	Description	Qty
1	Z25207	Bearing Insert, UC206-20	1
2	Z72231	Hex Lock Nut, 3/8NC	3
3	Z73131G8	SAE Washer, 3/8" G8	3
4	Z76231	Carriage Bolt, 3/8NC x 1"	3
5	Z25301	3-Bolt Flange Bearing, PF206 x Flange Only	2
6	2252W002	Drum	1
7	Z74113	Set Screw, 1/4NC x 1/2"	2
8	Z92112	Synthetic Winch Rope, 1/4 x 50ft, Grab Hook	1
9	Z92407	Winching Strap, 1" x 48"	1
10	Z25204	4-Bolt Flange Bearing, UCF208-24	1

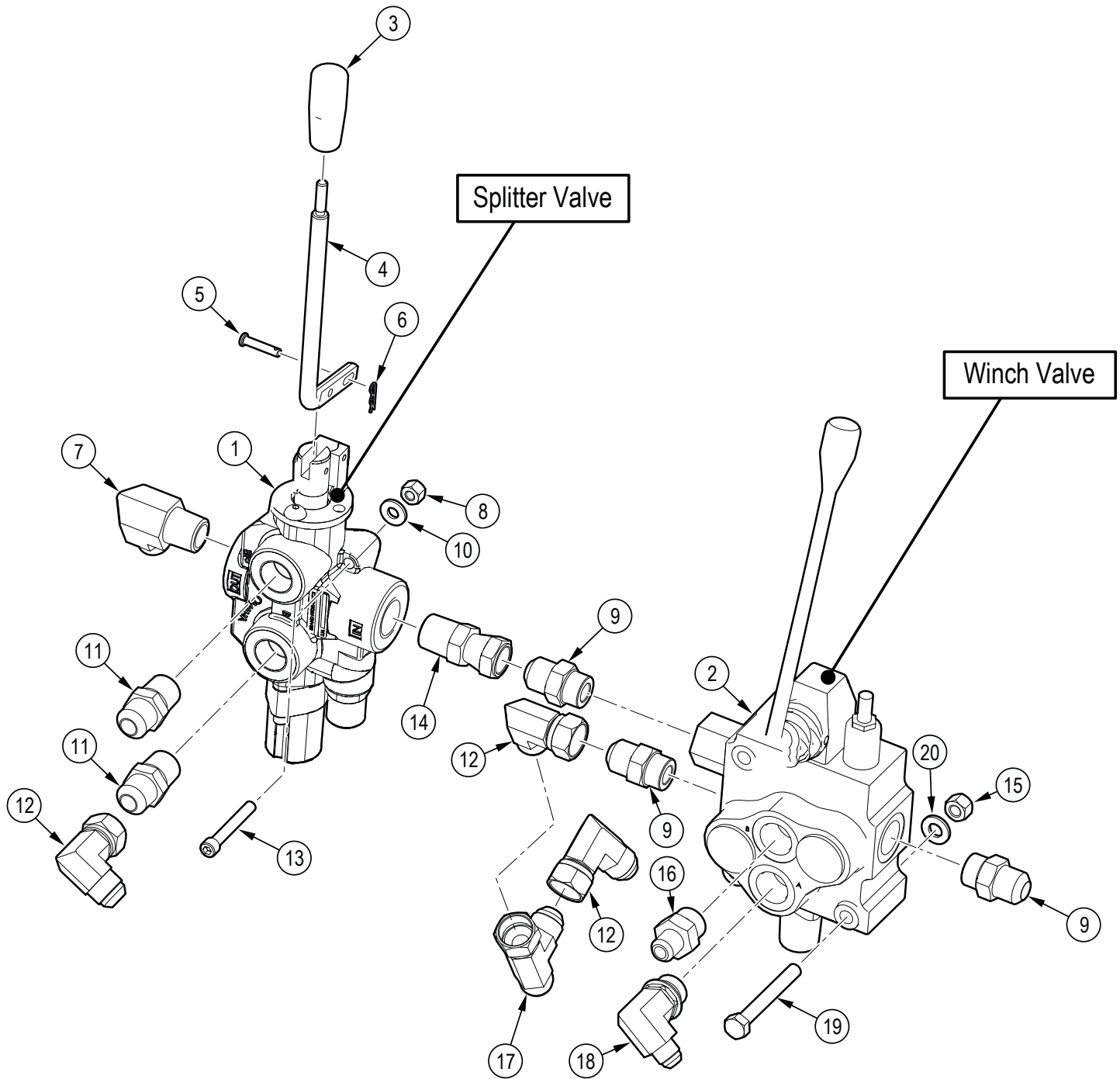
Item No.	Part No.	Description	Qty
11	Z74122	Set Screw, 5/16NF x 3/8"	1
12	Z46533	Key, 1/4" x 1/4" x 1"	2
13	Z34302	Spring Plunger, 3/8NC x 5/8" x 21 lbs	1
14	2252M042	Hub, Motor Side	1
15	Z29201	Grease Fitting, MP02	1
16	2252W037	Hub	1
17	Z29208	Grease Fitting, 1/4NF x 1-1/8"	1
18	Z71107	Hex Bolt, 1/4NC x 3/4"	1

P305 Light Bar Option



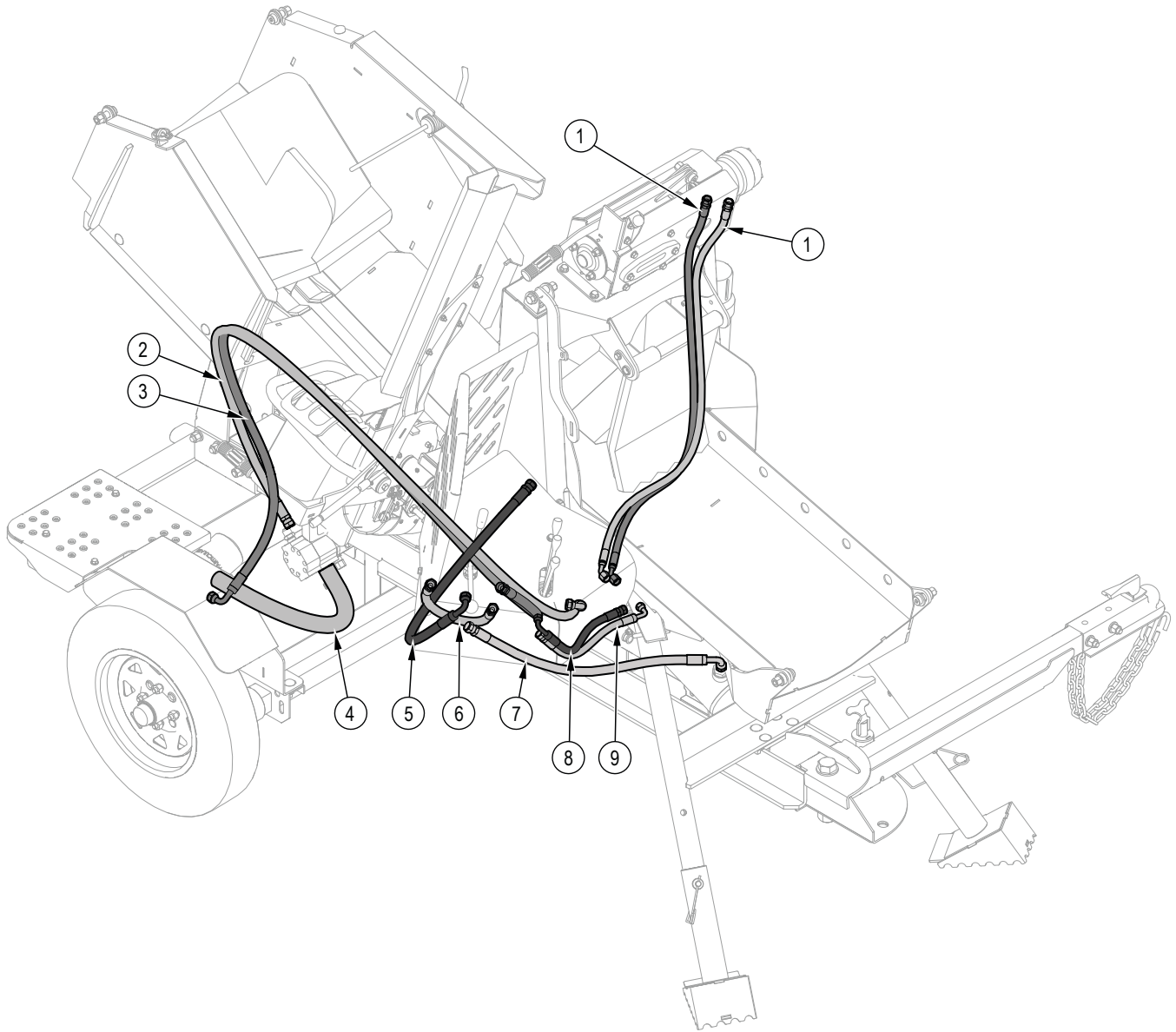
Item No.	Part No.	Description	Qty
1	2252F318	Wire Harness, WP525	1
2	Z62819	Rubberized Wire Clamp, 1/2"	3
3	Z76211	Carriage Bolt, 1/4NC x 3/4"	3
4	Z72211	Hex Lock Nut, 1/4NC	3
5	Z61103	Grommet, Oval x Open Back	2
6	Z61114	STT LED, Oval x Red	2
7	Z61210	Marker LED, Round x Red	2
8	Z61202	Grommet, Round x Open Back	2
9	Z61301	License Lamp, White	1
10	2252W308	Trailer Light Bar	1

Valve Assembly



Item No.	Part No.	Description	Qty	Item No.	Part No.	Description	Qty
1	Z56209	Single Spool Valve	1	11	Z51442	Straight, MJIC x MP 0808	2
2	Z56230	Single Spool Valve, OC Tandem	1	12	Z51562	Elbow 90, MJIC x FJICX 0808	3
3	Z56920	Tapered Handle, M6x1.0	1	13	Z75114	SHCS, 1/4NC x 1-3/4"	3
4	2250S057	Handle, Vertical Valve	2	14	Z51514	Straight, MP x FJICX 0808	3
5	Z11302	Clevis Pin, 3/16" x 3/4"	2	15	Z72221	Hex Lock Nut, 5/16NC	3
6	Z12210	Hitch Pin Clip, 3/64" x 3/4"	2	16	Z51644	Straight, MJIC x MORB 0608	1
7	Z51451	Elbow 90, MJIC x MP 0808	1	17	Z515901	Tee, MJIC x FJICX x MJIC 080808	1
8	Z72211	Hex Lock Nut, 1/4NC	3	18	Z51655	Elbow 90, MJIC x MORB 0608	3
9	Z51643	Straight, MJIC x MORB 0808	3	19	Z71225	Hex Bolt, 5/16NC x 2-1/2"	3
10	Z73111G8	SAE Washer, 1/4" Grade 8	3	20	Z73122G8	SAE Washer, 5/16" Grade 8	3

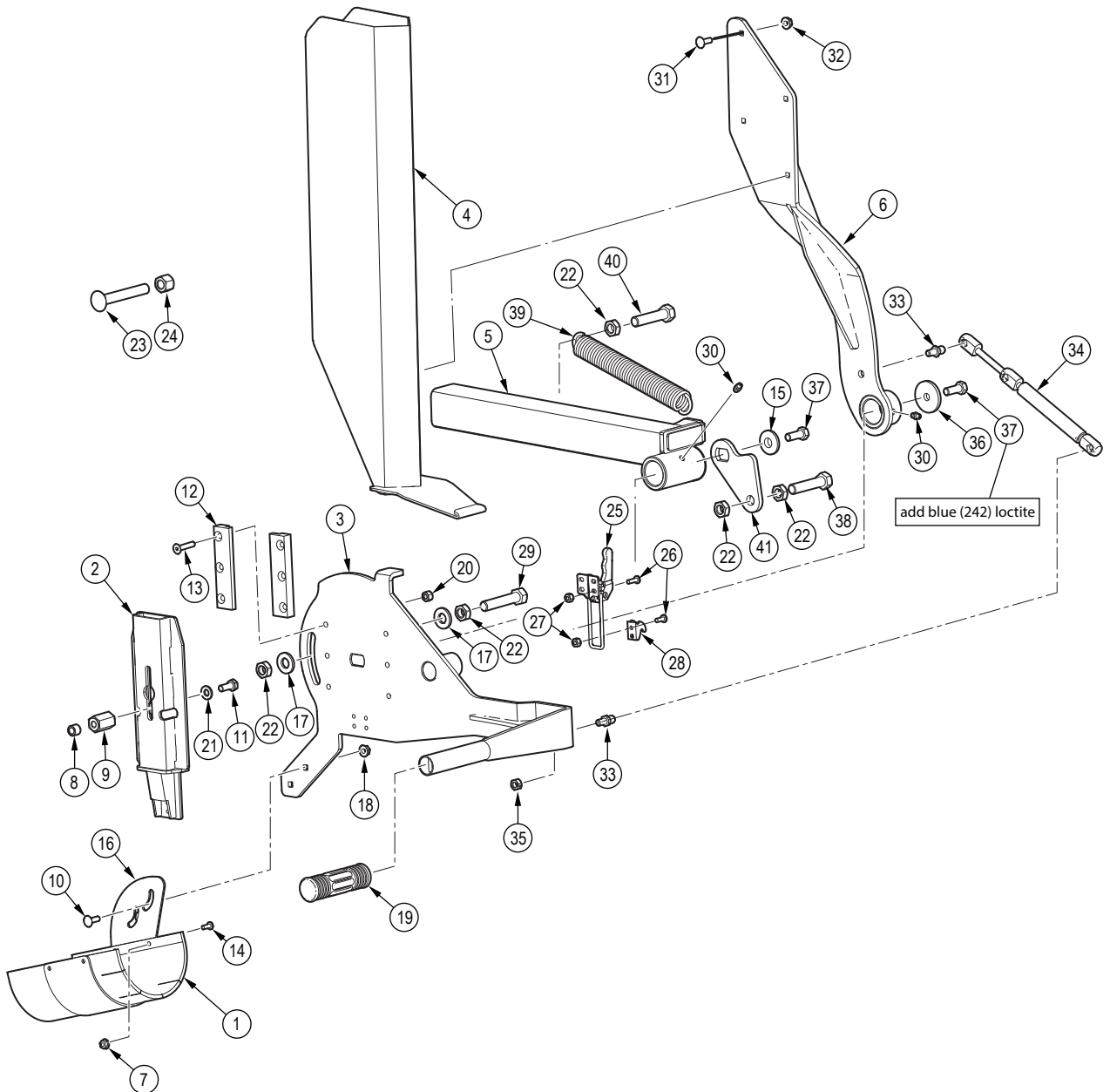
Hydraulic Circuit



Item No.	Part No.	Description	Qty
1	2252F314	3/8" Hose, FJIC06 x 45FJIC06 x 43.5"	2
2	2252F302	1/2" Hose, FJIC08 x 90FJIC08 x 84" SC	1
3	2252F306	1/2" Hose, FJIC08 x 90FJIC08 x 90"	1
4	2252F301	Suction Hose, 1" x 20"	1
5	2252F304	1/2" Hose, FJIC08 x 90FJIC08 x 30"	1

Item No.	Part No.	Description	Qty
6	2252F305	1/2" Hose, FJIC08 x FJIC08 x 16"	1
7	2252F312	1/2" Hose, FJIC08 x 90FJIC08 x 26"	1
8	2252F317	3/8" Hose, FJIC06 x 90FJIC06 x 13"	1
9	2252F317	3/8" Hose, FJIC06 x 90FJIC06 x 13"	1

Pivoting Chain Saw Holder



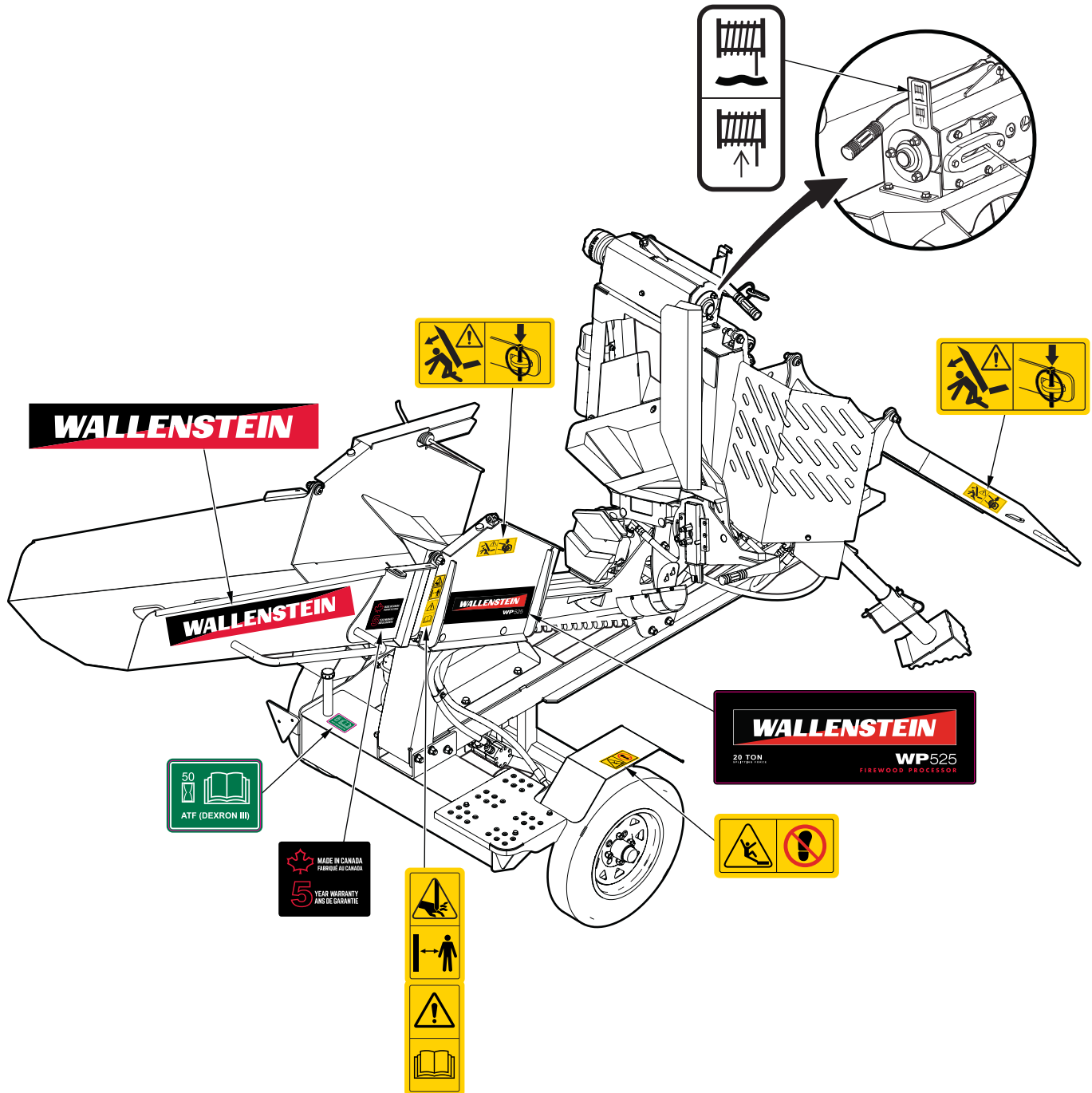
Item No.	Part No.	Description	Qty
1	2089L561	Chain Saw Debris Guard	1
2	2251W045	Universal Chain Saw Adapter	1
3	2251W047	Chain Saw Pivot	1
4	2089W553	Chain Saw Guard	1
5	2089W586	Chain Saw Pivot Base	1
6	2089W569	Guard Spine	1
7	Z72503	Serrated Flange Locknut, #10NF	7
8	2089M571	Bushing, Stihl Cover	2
9	2089M570	Bar Mounting Stud	9
10	Z76211	Carriage Bolt, 1/4NC x 3/4"	2
11	Z77150	Hex Bolt, M8x1.25 x 20mm	2
12	2251M009	Guide Gusset Block	2
13	Z75214	FHCS, 1/4NC x 1-1/4"	6
14	Z78303	Machine Screw, #10NF x 1/2"	4
15	2089L5501	Washer	1
16	2089L561	Chain Saw Debris Guard	1
17	Z73151	SAE Washer, 1/2"	2
18	Z72511	Serrated Flange Locknut, 1/4NC	2
19	Z19321	Handle Grip, 1"	1
20	Z72211	Hex Lock Nut, 1/4NC	6
21	Z73151	SAE Washer, 1/2"	2

Item No.	Part No.	Description	Qty
22	Z72351	Jam Nut, 1/2NC	5
23	Z762510	Carriage Bolt, 1/2NC x 3-1/2"	2
24	Z72251	Hex Lock Nut, 1/2NC	2
25	Z19516	Adjustable Draw Latch, 5" (GH-40820) Latch only	1
26	Z78324	Machine Screw, #10NF x 5/8"	6
27	Z72204	Hex Lock Nut, #10NF	6
28	Z19517	Catch for Z19516	1
29	Z71525	Hex Bolt, 1/2NC x 2-1/2"	1
30	Z29202	Grease Fitting, 1/4NF	2
31	Z76211	Carriage Bolt, 1/4NC x 3/4"	4
32	Z72511	Serrated Flange Locknut, 1/4NC	4
33	Z34208	Ball Stud, 10mm x 5/16NC	2
34	Z34209	Gas Spring, 8mm x 9.65" x 3.15" x 56 lbs	1
35	Z72223	Hex CTR-lock Nut, 5/16NC	1
36	2089L555	Washer	1
37	Z71310	Hex Bolt, 3/8NC x 1"	1
38	Z71522	Hex Bolt, 1/2NC x 2-1/4"	1
39	Z31404	Extension Spring	1
40	Z71517	Hex Bolt, 1/2NC x 1-3/4"	1
41	2089L574	Pivot Stop Washer	1

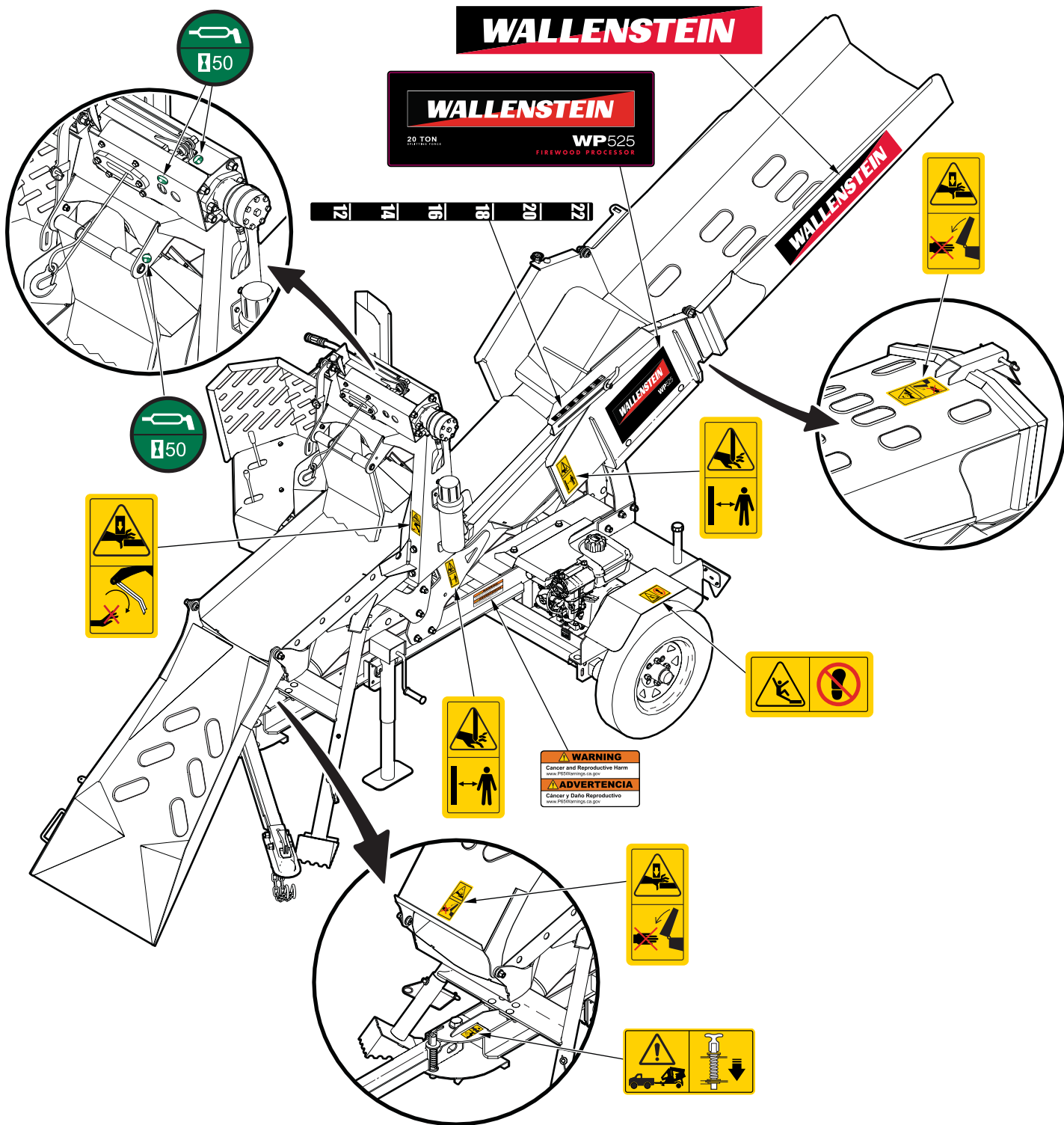
Decal Layout

IMPORTANT! If parts are replaced that have safety signs on them, new signs must be applied. Safety signs must always be replaced if they become damaged, are removed, or become illegible.

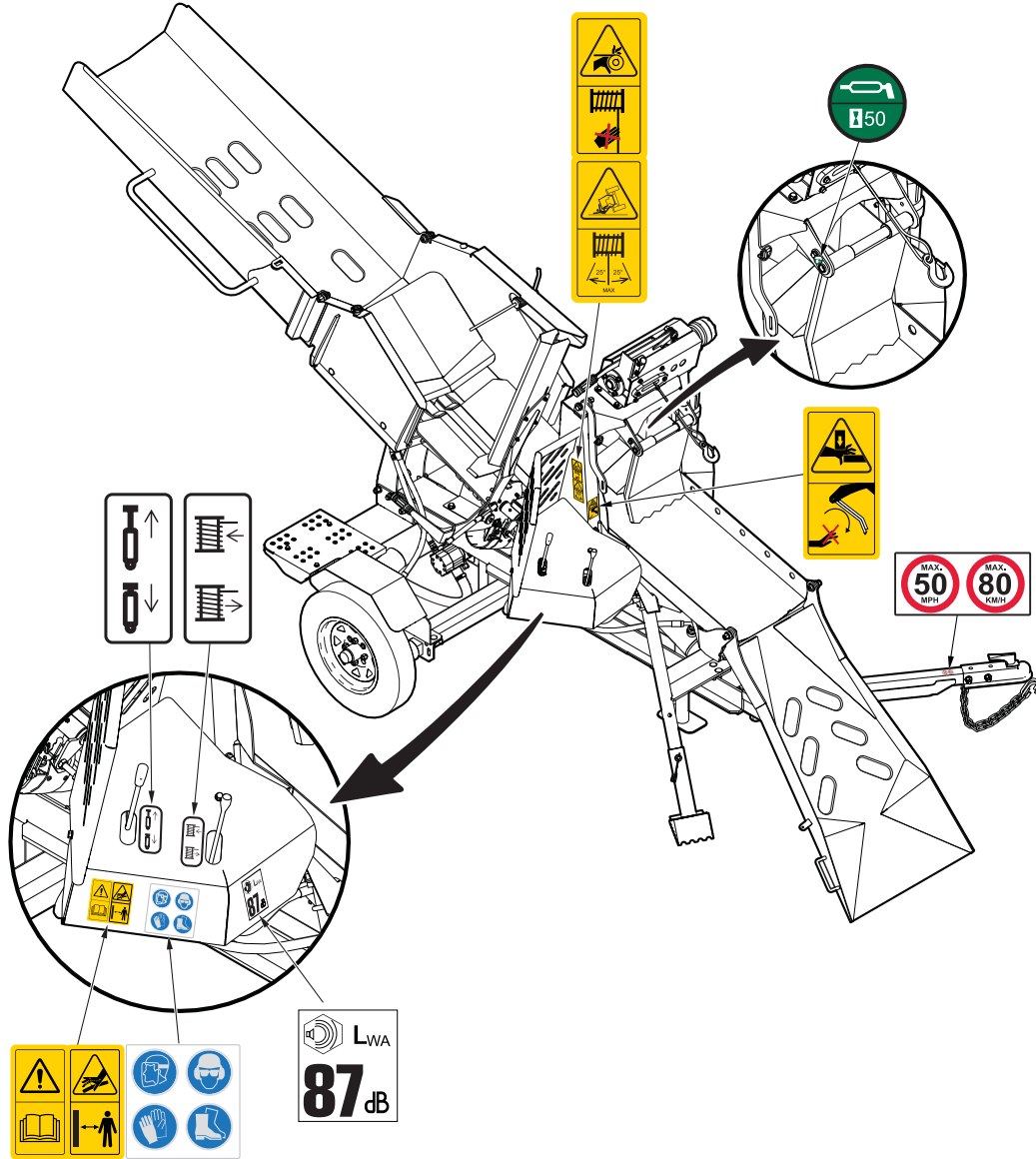
Safety signs are included in the product decal kit available from your authorized dealer. Decals are not available separately.



Decal Layout

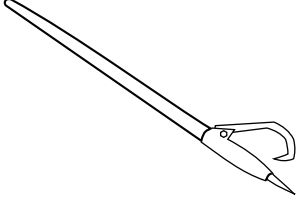
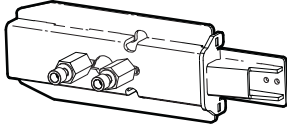
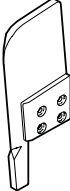
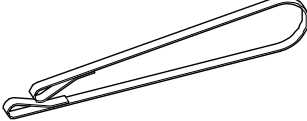
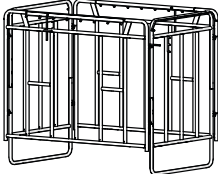
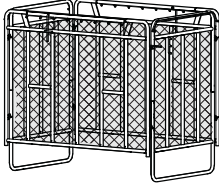
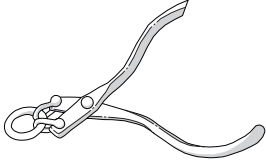
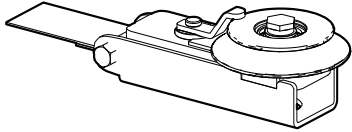
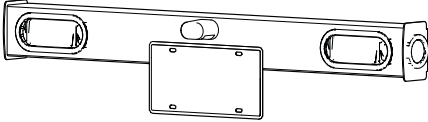


Decal Layout



Accessories

Call your dealer for pricing and availability

	<p>48" log peavey Z99001 Helps to move those heavy log timbers into position, and finish getting your last logs through the Wood Processor!</p>
	<p>Universal chainsaw adaptor P212 Save time by attaching a spare chain saw adaptor to a second chainsaw.</p>
	<p>2-way wedge P310 Process firewood suited for your woodstove or outdoor furnace in a single split.</p>
	<p>60" winch strap Z92405 High strength nylon strap for winching logs onto the processor.</p>
	<p>Firewood mesh bag frame P500 Optimal skid size: 48" x 48"</p>
	<p>Firewood mesh bag Z99007 Use with the P500 frame and a pallet to have a log pile that is ready to go and easy to transport without having to manually stack it.</p>
	<p>Logging tongs Z99003 Opens to approx. 26".</p>
	<p>Self releasing directional pulley 5089A100 Allows you to safely winch logs around corners, reducing damage to your logs. As the log approaches the pulley, it triggers a lever that automatically releases the cable from the pulley.</p>
	<p>Trailer light kit P305 The trailer light kit enhances visibility and safety while towing on the highway.</p>

Bolt Torque

IMPORTANT! If you replace hardware, use fasteners of the same grade.

IMPORTANT! The torque specifications in these tables are for non-greased or non-oiled threads. Do not grease or oil fastener threads unless otherwise indicated. When using a thread lock, increase the specified torque 5%.



Bolt grades are identified by the marks on top of the bolt head.

These bolt torque specification tables provide the correct torque settings for common bolts and capscrews. Tighten all bolts to the torque that is specified in the table, unless otherwise indicated. Check the bolt tightness periodically.

Imperial Bolt Torque Specifications

Bolt Diameter	Torque					
	SAE Gr. 2		SAE Gr. 5		SAE Gr. 8	
	lbf•ft	N•m	lbf•ft	N•m	lbf•ft	N•m
1/4 inch	6	8	9	12	12	17
5/16 inch	10	13	19	25	27	36
3/8 inch	20	27	33	45	45	63
7/16 inch	30	41	53	72	75	100
1/2 inch	45	61	80	110	115	155
9/16 inch	60	95	115	155	165	220
5/8 inch	95	128	160	215	220	305
3/4 inch	165	225	290	390	400	540
7/8 inch	170	230	420	570	650	880



SAE Gr. 2



SAE Gr. 5



SAE Gr. 8

Metric Bolt Torque Specifications

Bolt Diameter	Torque			
	Gr. 8.8		Gr. 10.9	
	lbf•ft	N•m	lbf•ft	N•m
M3	0.4	0.5	1.3	1.8
M4	2.2	3	3.3	4.5
M6	7	10	11	15
M8	18	25	26	35
M10	37	50	52	70
M12	66	90	92	125
M14	83	112	116	158
M16	166	225	229	310
M20	321	435	450	610
M30	1,103	1,495	1,550	2,100



8.8



10.9

Hydraulic Fitting Torque

Tighten flare-type tube fittings:

1. Check the flare and flare seat for defects that might cause leaks.
2. Align the tube with the fitting before tightening.
3. Hand-tighten the swivel nut until it is snug.
4. To prevent the tube from twisting, use two wrenches. Place one wrench on the connector body and tighten the swivel nut with the second wrench. Torque the fitting to the correct specification.

If a torque wrench is not available, use the flats from finger tight (FFFT) method.

Hydraulic Fitting Torque Specifications

Tube size OD	Hex size across flats	Torque		Flats from finger tight	
		lbf•ft	N•m	Flats	Turns
Inches	Inches				
3/16	7/16	6	8	2	1/6
1/4	9/16	11–12	15–17	2	1/6
5/16	5/8	14–16	19–22	2	1/6
3/8	11/16	20–22	27–30	1-1/4	1/6
1/2	7/8	44–48	59–65	1	1/6
5/8	1	50–58	68–79	1	1/6
3/4	1-1/4	79–88	107–119	1	1/8
1	1-5/8	117–125	158–170	1	1/8

Specifications are for non-lubricated connections.

Wheel Lug Nut Torque



WARNING!

Wheel lug nuts must be installed and kept at the correct torque to prevent loose wheels, broken studs, or possible separation of a wheel from the axle.

It is an extremely important safety procedure to apply and maintain the correct torque on lug nuts that secure the wheel to the trailer axle. A calibrated torque wrench is the best tool to make sure that the correct amount of torque is applied to a fastener.

Tighten wheel lug nuts to the correct torque before the first use and after each wheel removal. After a wheel is installed, check and torque the lug nuts after the first 10 miles (16 km), 25 miles (40 km), and 50 miles (80 km). Check the lug nut torque periodically thereafter.

- Start all lug nuts onto the threads by hand.
- Tighten lug nuts in stages, following the pattern shown below the Lug Nut Torque Specifications table.

Lug Nut Torque Specifications

Wheel size	Units	First stage	Second stage	Third stage
8 inch	lbf•ft N•m	12–20 16–26	30–35 39–45.5	45–55 58.5–71.5
12 inch	lbf•ft N•m	20–25 26–32.5	35–40 45.5–52	50–60 65–78
13 inch	lbf•ft N•m	20–25 26–32.5	35–40 45.5–52	50–60 65–78
14 inch	lbf•ft N•m	20–25 26–32.5	50–60 65–78	90–120 117–156
15 inch	lbf•ft N•m	20–25 26–32.5	50–60 65–78	90–120 117–156
16 inch	lbf•ft N•m	20–25 26–32.5	50–60 65–78	90–120 117–156

Lug nut torque pattern:

