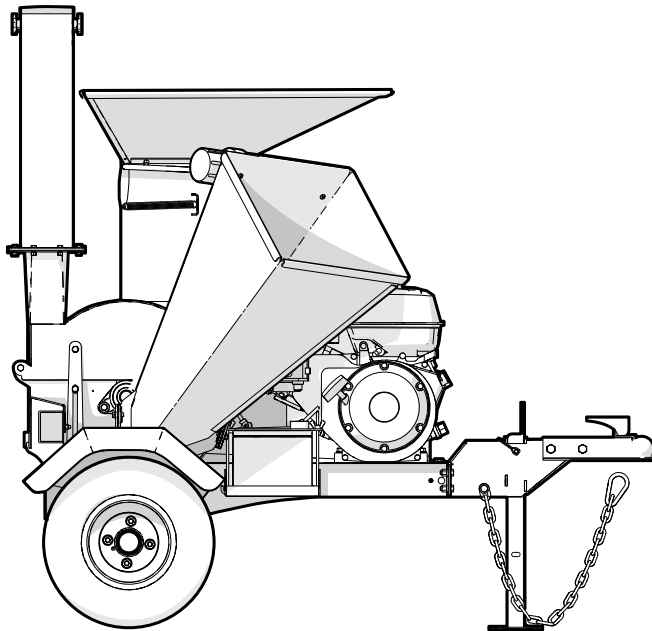


PARTS MANUAL

Serial Number 2E9US111XM5040746 & up

BXMT3213 **TRAILER CHIPPER-SHREDDER**



Foreword

This Wallenstein parts manual is prepared to assist customers in ordering quality OEM replacement parts.

Regular maintenance combined with replacing old, worn or broken parts with the correct OEM parts is essential in prolonging the life of your Wallenstein product. Refer to this manual to identify replacement parts.

To order parts, contact your Wallenstein dealer or distributor. Have the product model and serial number handy.

If your dealer is no longer available, please go to WallensteinEquipment.com. At the bottom of the page, select Dealer Locator.

All information contained in this parts manual is current as per the revision date at the bottom of the page. Wallenstein reserves the right to change product specifications at any time without notice.

If your product specifications differ from those contained in this manual, contact Wallenstein for current information.

Reproduction of information in this parts manual is prohibited without prior written permission from Wallenstein Equipment Inc.

Wallenstein Equipment Inc. • © 2023

WARNING!

For safety, operation, and maintenance information, see the Operator's Manual.

Maintenance should be performed by trained personnel only.

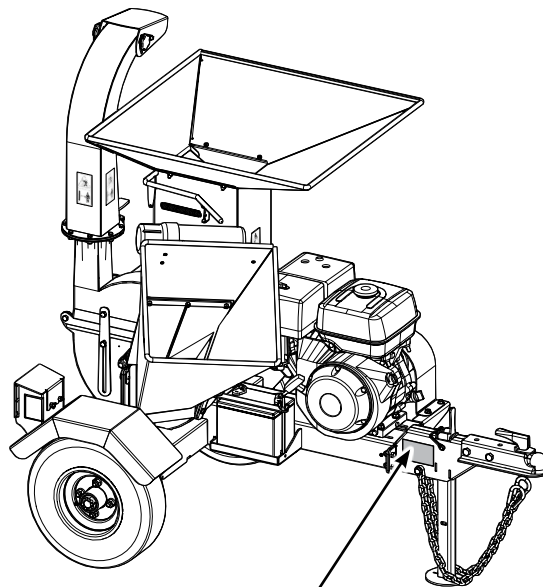
Serial Number Location

Always provide the model and serial number of your Wallenstein product when ordering parts or requesting service or other information. The serial number is on the product information plate as shown below.

Record your product information here for future reference.

Model _____

Serial Number _____



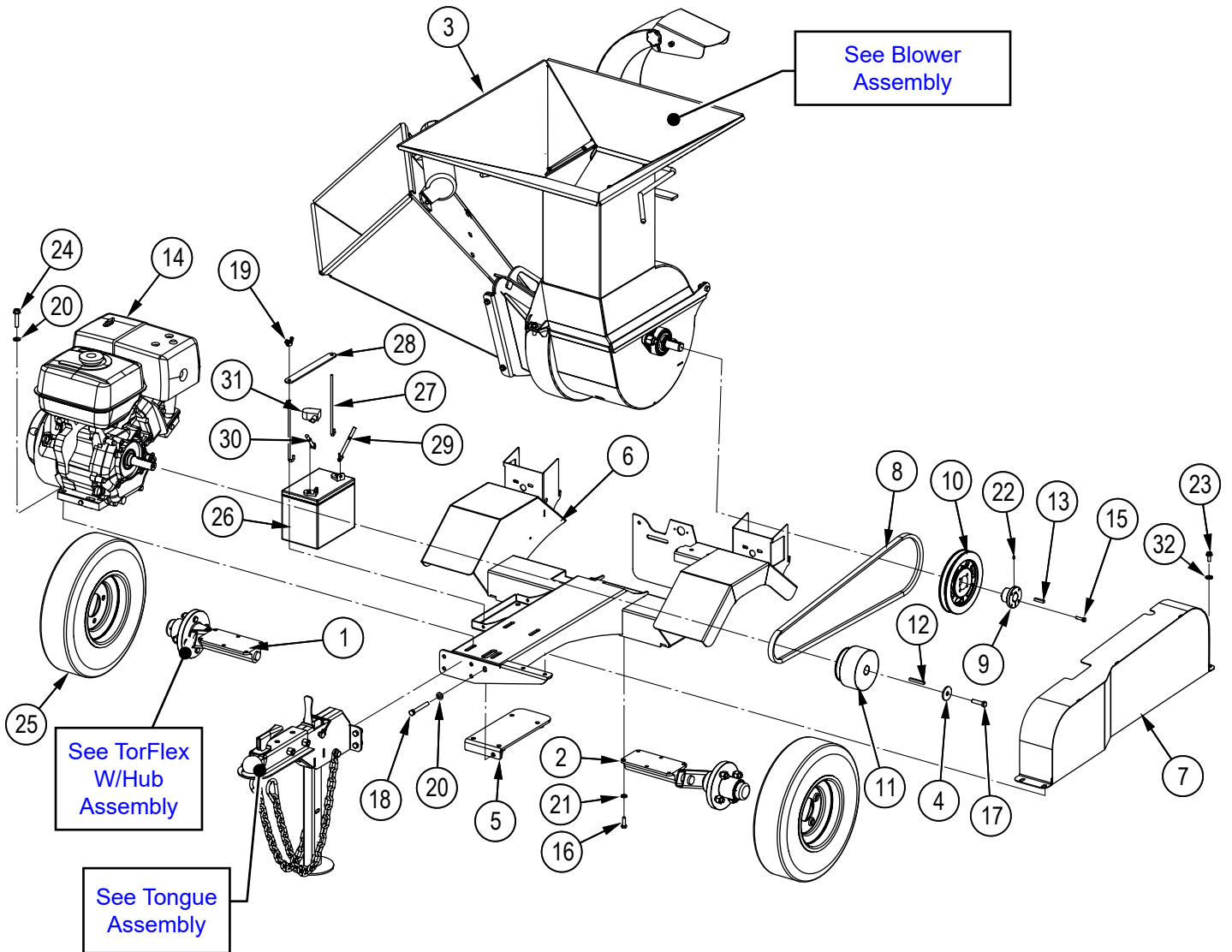
**Model and Serial
Number Location**

www.wallensteinequipment.com

Contents

| | |
|--|-----------|
| Main Parts | 4 |
| Blower Assembly | 5 |
| Discharge Chute Assembly | 6 |
| Rotor Assembly | 7 |
| Tongue Assembly | 8 |
| TorFlex with Hub Assembly | 8 |
| Hopper Flap | 9 |
| Lights and Harness | 10 |
| Decal Layout | 11 |
| Accessories | 13 |
| Common Bolt Torque Values | 14 |
| Wheel Lug Torque | 15 |

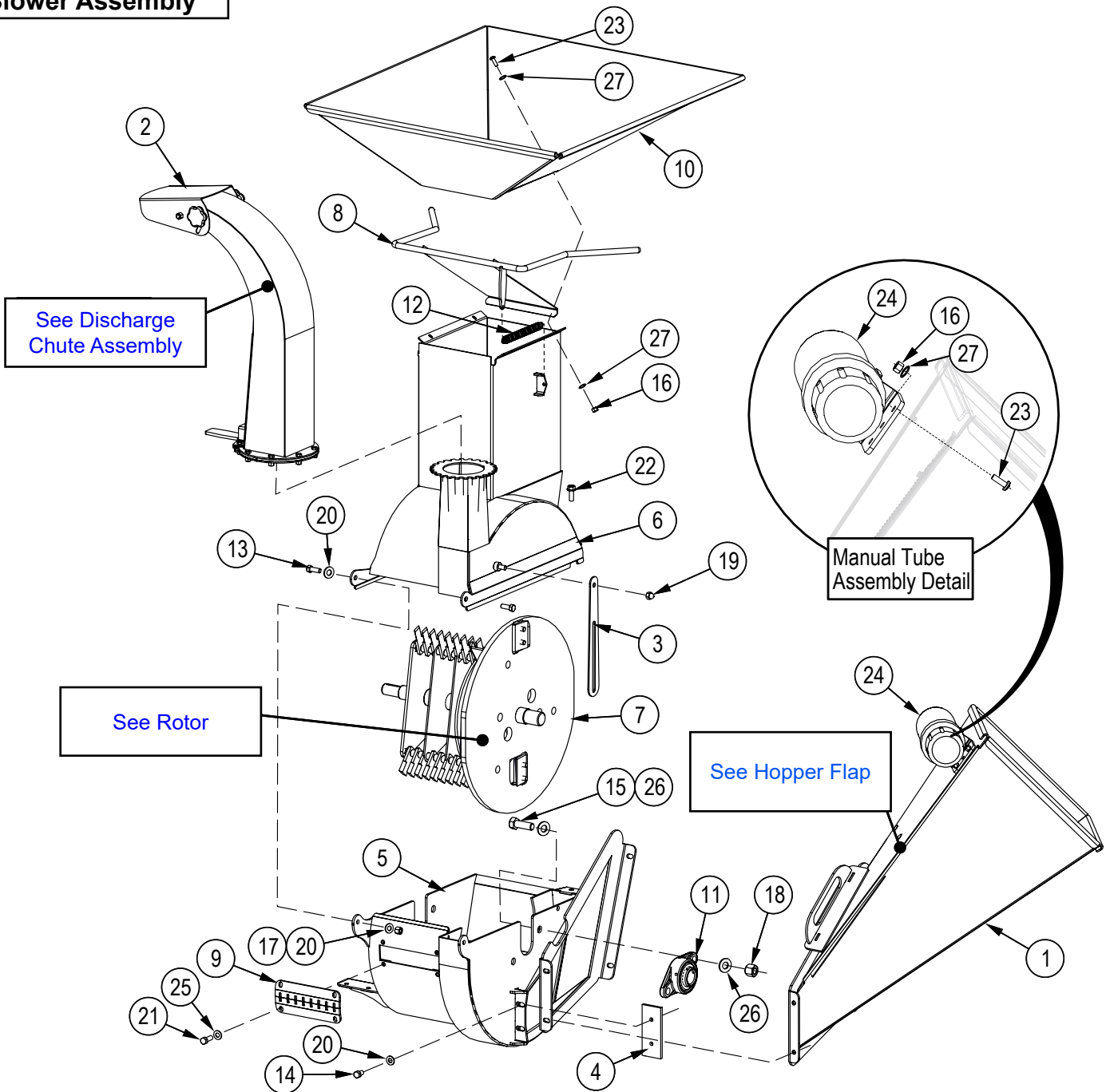
Main Parts



| Item No. | Part No. | Description | Qty |
|----------|----------|-------------------------------|-----|
| 1 | 1056A602 | Torflex with Hub, RH | 1 |
| 2 | 1056A603 | Torflex with Hub, LH | 1 |
| 3 | 1056A901 | Blower Assembly for BXMT | 1 |
| 4 | 1056L665 | Clutch Washer | 1 |
| 5 | 1056W611 | Belt Tightener | 1 |
| 6 | 1056W613 | Main Base | 1 |
| 7 | 1056W615 | Shield | 1 |
| 8 | Z41160 | Single Belt, B64 | 1 |
| 9 | Z41510 | Hub, L x 1" | 1 |
| 10 | Z41613 | Sheave, MBL74 x L | 1 |
| 11 | Z41803 | Centrifugal Clutch, 1B36 x 1" | 1 |
| 12 | Z46531 | Key, 1/4" x 1/4" x 2" | 1 |
| 13 | Z46534 | Key, 1/4" x 1/4" x 1-1/4" | 1 |
| 14 | Z47754 | Vanguard 400, Electric | 1 |
| 15 | Z71110 | Hex Bolt, 1/4NC x 1" | 2 |
| 16 | Z71210 | Hex Bolt, 5/16NC x 1" | 12 |

| Item No. | Part No. | Description | Qty |
|----------|----------|---|-----|
| 17 | Z71315 | Hex Bolt, 3/8NC x 1-1/2" | 1 |
| 18 | Z71391 | Hex Bolt, 3/8NC x 3" Full Threads | 1 |
| 19 | Z72921 | Wing Nut, 1/4NC | 2 |
| 20 | Z73131 | SAE Washer, 3/8" | 9 |
| 21 | Z73321 | Split Lock Washer, 5/16" | 12 |
| 22 | Z74122 | Set Screw, 5/16NF x 3/8" | 1 |
| 23 | Z71207 | Hex Bolt, 5/16NC x 3/4" | 4 |
| 24 | Z71317 | Hex Bolt, 3/8NC x 1-3/4" | 4 |
| 25 | Z91301 | 4.80-8 LRB SportTrail 4on4" | 2 |
| 26 | Z93201 | Battery, 250CCA | 1 |
| 27 | Z93202 | J-Hook, 1/4" x 7" | 2 |
| 28 | Z93207 | Hold-Down Strap, 1" x 8-1/2" | 1 |
| 29 | Z93210 | Battery Cable, Negative x 25" | 1 |
| 30 | Z93212 | Battery Cable, Positive x 28" | 1 |
| 31 | Z93403 | Garden Tractor Terminal Protector - Red | 1 |
| 32 | Z73122G8 | SAE Washer, 5/16" Grade 8 | 4 |

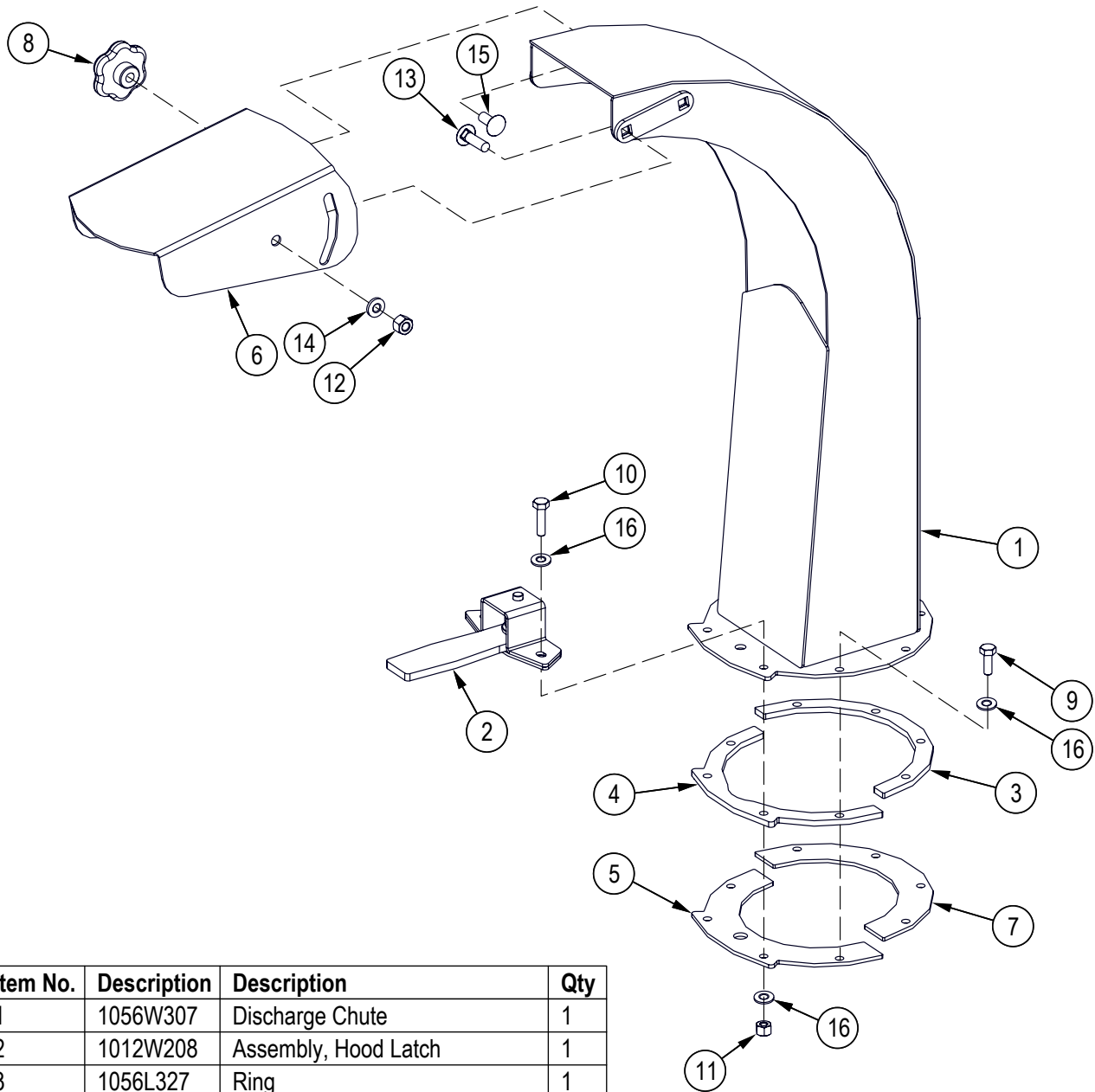
Blower Assembly



| Item No. | Part No. | Description | Qty |
|----------|----------|------------------------------------|-----|
| 1 | 1018W107 | Chipper Chute | 1 |
| 2 | 1056A302 | Assembly, Discharge Chute | 1 |
| 3 | 1056L229 | Positive Stop Plate | 1 |
| 4 | 1056M304 | Knife, 3" Ledger | 1 |
| 5 | 1056W101 | Housing, Bottom Rotor | 1 |
| 6 | 1056W102 | Housing, Upper Rotor | 1 |
| 7 | 1056W103 | Rotor | 1 |
| 8 | 1056W107 | Shredder, Chute Flapper | 1 |
| 9 | 1056W610 | Concave | 1 |
| 10 | 1056W617 | Hopper Shredder Top | 1 |
| 11 | Z25103 | 2-Bolt Flange Bearing UCFL206-20 | 2 |
| 12 | Z31301 | Ext Spring 17mmOD x 140mm x 0.080" | 1 |
| 13 | Z71312 | Hex Bolt, 3/8NC x 1 1/4" | 2 |

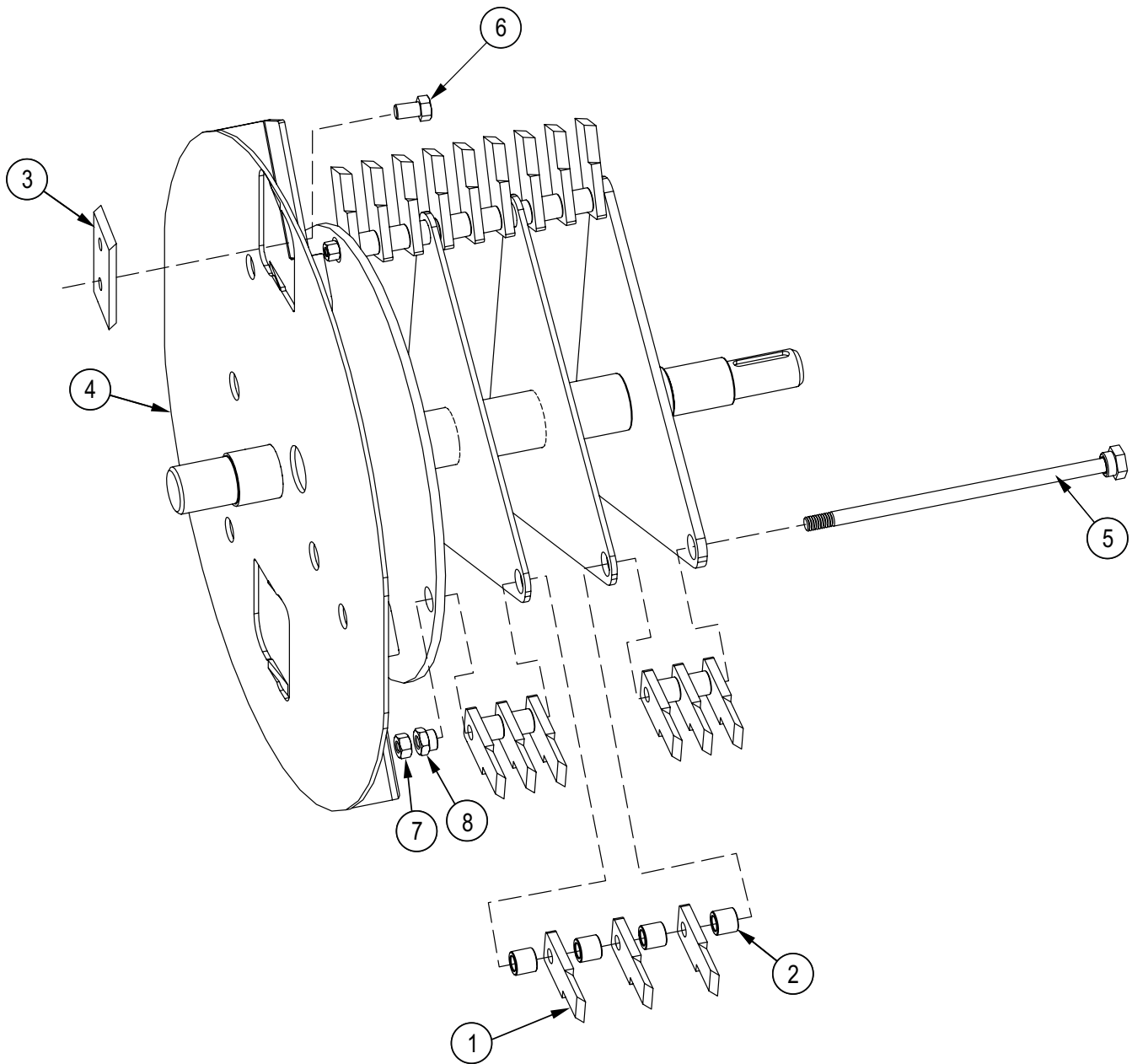
| Item No. | Part No. | Description | Qty |
|----------|----------|-----------------------------|-----|
| 14 | Z71372G8 | Hex Bolt, 3/8NF x 5/8" G8 | 2 |
| 15 | Z71617 | Hex Bolt, 5/8NC x 1-3/4" | 4 |
| 16 | Z72211 | Hex Lock Nut, 1/4NC | 7 |
| 17 | Z72231 | Hex Lock Nut, 3/8NC | 2 |
| 18 | Z72261 | Hex Lock Nut, 5/8NC | 4 |
| 19 | Z72911 | Acorn Nut, 3/8NC | 2 |
| 20 | Z73131 | SAE Washer, 3/8" | 4 |
| 21 | Z71210 | Hex Bolt, 5/16NC x 1" | 8 |
| 22 | Z76134 | Flange Bolt, 3/8NC x 1" | 1 |
| 23 | Z78318 | Machine Screw, 1/4NC x 7/8" | 7 |
| 24 | Z96503 | Manual Tube, 3-1/2" Short | 1 |
| 25 | Z73122G8 | SAE Washer, 5/16" Grade 8 | 4 |
| 26 | Z73161G8 | SAE Washer, 5/8" Grade 8 | 4 |
| 27 | Z73111G8 | SAE Washer, 1/4" Grade 8 | 7 |

Discharge Chute Assembly



| Item No. | Description | Description | Qty |
|----------|-------------|-------------------------------|-----|
| 1 | 1056W307 | Discharge Chute | 1 |
| 2 | 1012W208 | Assembly, Hood Latch | 1 |
| 3 | 1056L327 | Ring | 1 |
| 4 | 1056L329 | Plate, Spacer Ring | 1 |
| 5 | 1056L330 | Plate, Hood Capture | 1 |
| 6 | 1056L333 | Deflector, Discharge Chute | 1 |
| 7 | 1056L334 | Ring | 1 |
| 8 | Z19313 | Hand Knob, 5/16NC Female Stud | 2 |
| 9 | Z71110 | Hex Bolt, 1/4NC x 1" | 6 |
| 10 | Z71112 | Hex Bolt, 1/4NC x 1 1/4" | 2 |
| 11 | Z72211 | Hex Lock Nut, 1/4NC | 8 |
| 12 | Z72221 | Hex Lock Nut, 5/16NC | 2 |
| 13 | Z76225 | Carriage Bolt, 5/16NC x 1" | 4 |
| 14 | Z73122G8 | SAE Washer, 5/16" Grade 8 | 2 |
| 15 | Z76221 | Carriage Bolt, 5/16NC x 3/4" | 2 |
| 16 | Z73111G8 | SAE Washer, 1/4" Grade 8 | 16 |

Rotor Assembly



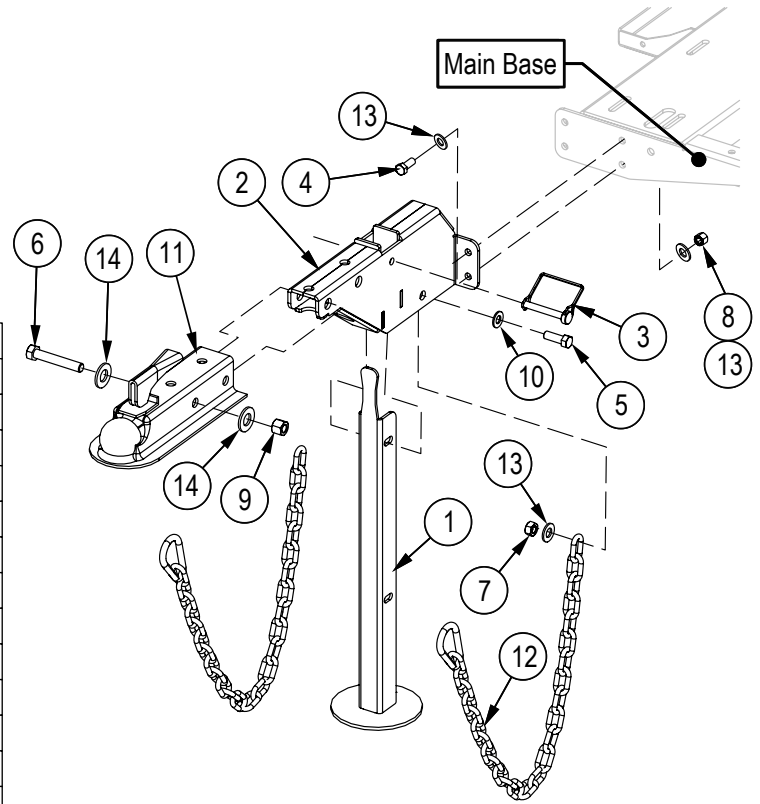
| Item No. | Part No. | Description | Qty |
|----------|----------|---------------------------|-----|
| 1 | 1056M108 | Knife, Shredder | 27 |
| 2 | 1056M115 | Spacer, Shredder .580 | 24 |
| 3 | 1056M303 | Knife, 3" Rotor | 2 |
| 4 | 1056W103 | Rotor | 1 |
| 5 | 1056W614 | Hammer Retainer Pin | 3 |
| 6 | Z71372G8 | Hex Bolt, 3/8NF x 5/8" G8 | 4 |
| 7 | Z72231 | Hex Lock Nut, 3/8NC | 3 |
| 8 | 1056M626 | Retainer Rod Head | 3 |

NOTE

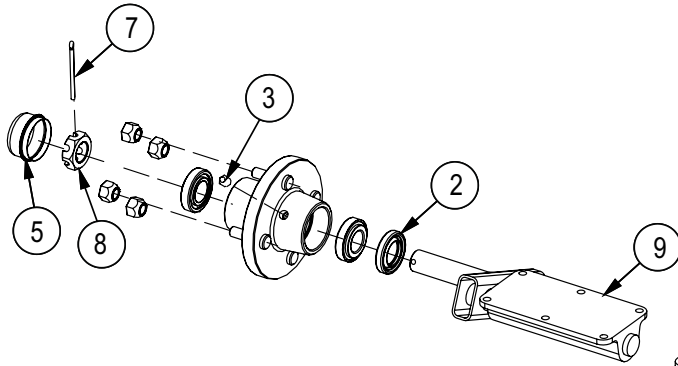
It is recommended that the clearance between the rotor and stationary blades be set and maintained at 1/32–1/16" (.76–1.52 mm) to obtain the best performance.

Tongue Assembly

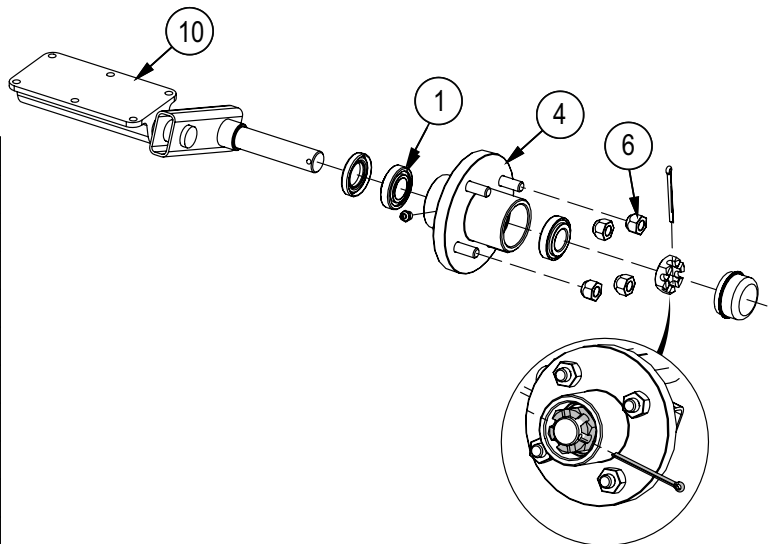
| Item No. | Part No. | Description | Qty |
|----------|----------|---------------------------------------|-----|
| 1 | 1056W402 | Jack Stand | 1 |
| 2 | 1056W601 | Main Spine | 1 |
| 3 | Z12432 | Snap Lock Pin, 3/8" x 2-1/2" | 1 |
| 4 | Z71312 | Hex Bolt, 3/8NC x 1 1/4" | 4 |
| 5 | Z71412 | Hex Bolt, 7/16NC x 1-1/4" | 2 |
| 6 | Z71530 | Hex Bolt, 1/2NC x 3" | 2 |
| 7 | Z72141 | Hex Nut, 7/16NC | 2 |
| 8 | Z72231 | Hex Lock Nut, 3/8NC | 4 |
| 9 | Z72251 | Hex Lock Nut, 1/2NC | 2 |
| 10 | Z73142 | SAE Washer, 7/16" | 2 |
| 11 | Z91614 | Hitch Coupler, 2" Ball x 2" x 3500lbs | 1 |
| 12 | Z92307 | Safety Chain, 1/4" x 3ft with Snap | 2 |
| 13 | Z73131G8 | SAE Washer, 3/8" Grade 8 | 4 |
| 14 | Z73151G8 | SAE Washer, 1/2" Grade 8 | 4 |



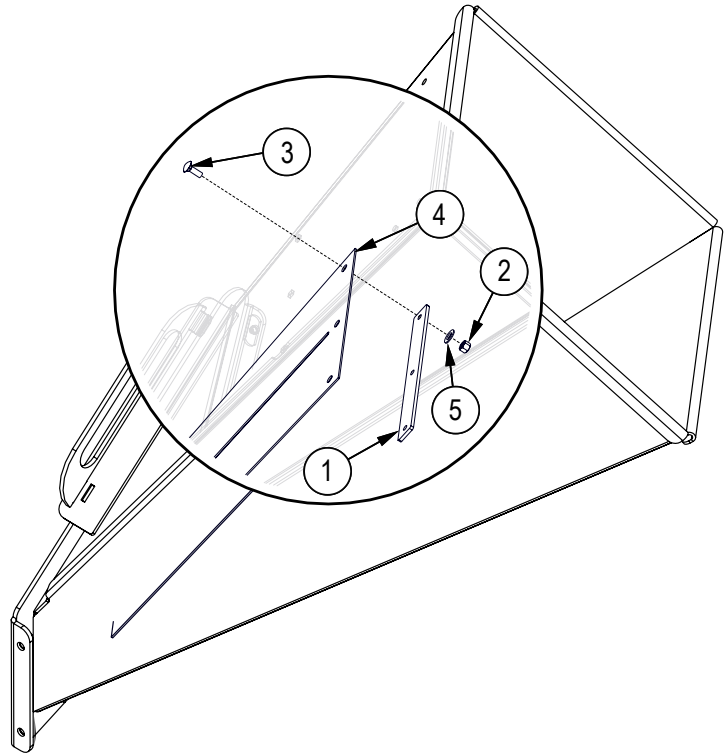
Axle/Hub Assembly



| Item No. | Part No. | Description | Qty |
|----------|----------|-------------------------------|-----|
| 1 | Z23201 | Roller Bearing, L44643 L44610 | 4 |
| 2 | Z28301 | Double Lip Seal, 1-1/4" | 2 |
| 3 | Z29201 | Grease Fitting, MP02 | 2 |
| 4 | Z91201 | Hub, 1000lbs x 4on4 | 2 |
| 5 | Z91801 | Dust Cap, 1.98 Bore | 2 |
| 6 | Z72931 | Lug Nut, 1/2NF | 8 |
| 7 | Z12323 | Cotter Pin, 3/16" x 2-1/2" | 2 |
| 8 | Z72691 | Castle Nut, 1NF x 9/16" Thick | 2 |
| 9 | Z91111 | RH Stub Flex Axle, 935lbs | 1 |
| 10 | Z91112 | LH Stub Flex Axle, 935lbs | 1 |

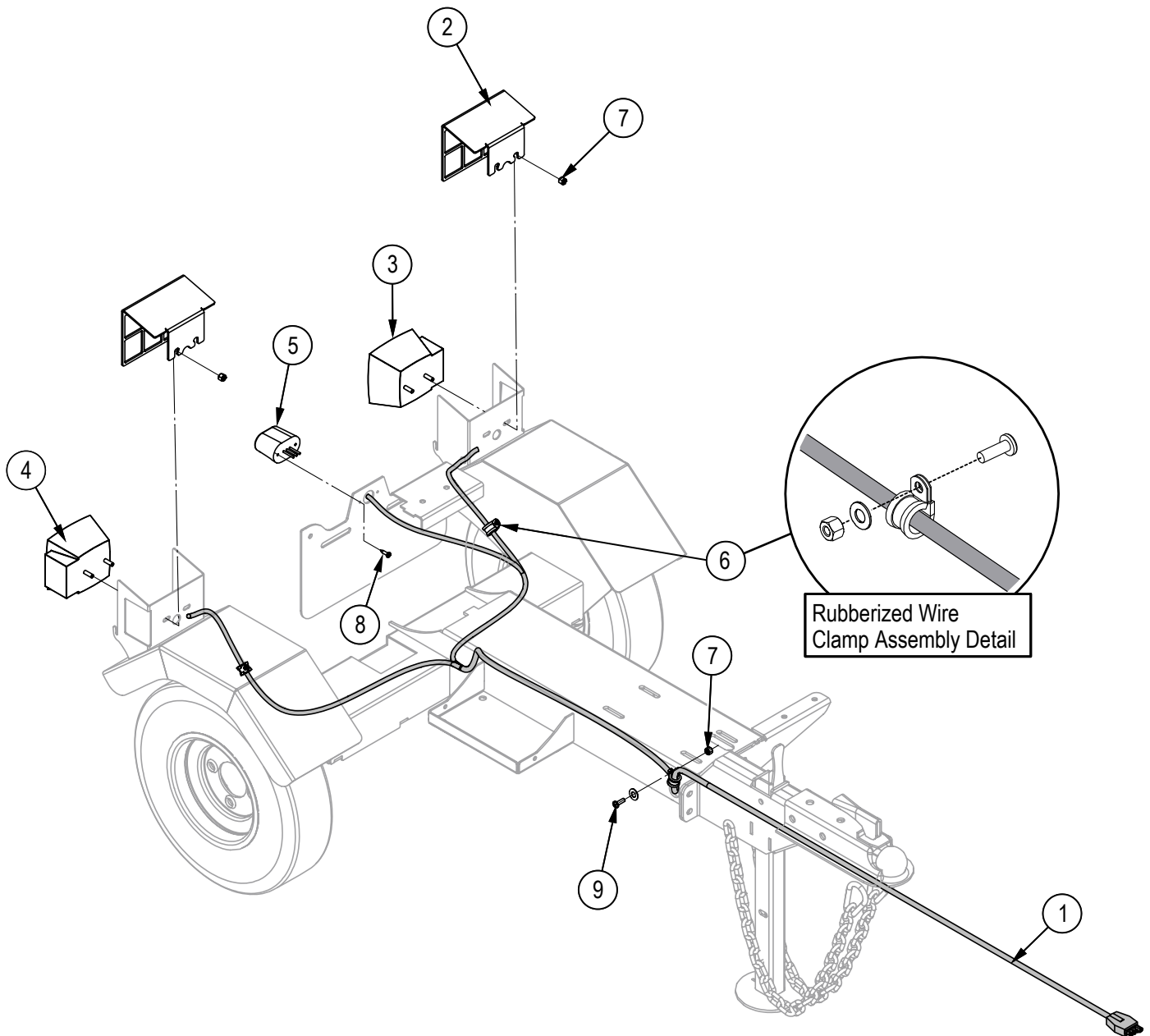


Hopper Flap



| Item No. | Part No. | Description | Qty |
|----------|----------|---------------------------|-----|
| 1 | 1018L994 | Chipper Chute Flap Clamp | 1 |
| 2 | Z72211 | Hex Lock Nut, 1/4NC | 3 |
| 3 | Z76212 | Carriage Bolt, 1/4NC x 1" | 3 |
| 4 | 1056S604 | Flap, Hopper | 1 |
| 5 | Z73111G8 | SAE Washer, 1/4" Grade 8 | 3 |

Lights and Harness



| Item No. | Part No. | Description | Qty |
|----------|----------|--------------------------------|-----|
| 1 | 1056F001 | Harness, BXMT3213 Lights | 1 |
| 2 | 2089L351 | Light Guard | 2 |
| 3 | Z61106 | STTL Lamp, Square LH | 1 |
| 4 | Z61107 | STT Lamp, Square RH | 1 |
| 5 | Z61301 | License Lamp, White | 1 |
| 6 | Z62819 | Rubberized Wire Clamp, 1/2" | 3 |
| 7 | Z72211 | Hex Lock Nut, 1/4NC | 7 |
| 8 | Z76712 | Self-tapping Screw, #10 x 3/4" | 2 |
| 9 | Z78301 | Machine Screw, 1/4NC x 3/4" | 3 |
| 10 | Z73111G8 | SAE Washer, 1/4" Grade 8 | 3 |

IMPORTANT! When assembling or replacing wire harnesses, apply a thin coating of silicone dielectric grease to the harness connectors.

Clean off any corrosion or loose particles, then apply a small amount to the surfaces of the connectors where they meet. The grease helps to stop any possibility of future corrosion.

Reassemble the connection. Wipe off any grease that squeezes out.

Decal Layout

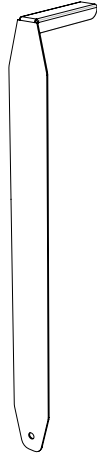
IMPORTANT! If parts are replaced that have safety signs on them, new signs must be applied. Safety signs must always be replaced if they become damaged, are removed, or become illegible.

Safety signs are included in the product decal kit available from your authorized dealer. Decals are not available separately.



Accessories

Call your dealer for pricing and availability

**Ledger Clearance Setting Gauge****P/N 1012L269**

An easy and accurate way of setting the critical clearances between the ledger blade and the rotor chipper blade.


Common Bolt Torque Values

Checking Bolt Torque

The tables shown give correct torque values for various bolts and capscrews. Tighten all bolts to the torque values specified in the table, unless indicated otherwise. Check tightness of bolts periodically.

IMPORTANT! If replacing hardware, use fasteners of the same grade.

IMPORTANT! Torque figures indicated in the table are for non-greased or non-oiled threads. Do not grease or oil threads unless indicated otherwise. When using a thread locker, increase torque values by 5%.

 **NOTE:** Bolt grades are identified by their head markings.

Imperial Bolt Torque Specifications

| Bolt Diameter | Torque Value | | | | | |
|---------------|--------------|-----|-----------|-----|-----------|------|
| | SAE Gr. 2 | | SAE Gr. 5 | | SAE Gr. 8 | |
| | lbf•ft | N•m | lbf•ft | N•m | lbf•ft | N•m |
| 1/4" | 6 | 8 | 9 | 12 | 12 | 17 |
| 5/16" | 10 | 13 | 19 | 25 | 27 | 36 |
| 3/8" | 20 | 27 | 33 | 45 | 45 | 63 |
| 7/16" | 30 | 41 | 53 | 72 | 75 | 100 |
| 1/2" | 45 | 61 | 80 | 110 | 115 | 155 |
| 9/16" | 60 | 95 | 115 | 155 | 165 | 220 |
| 5/8" | 95 | 128 | 160 | 215 | 220 | 305 |
| 3/4" | 165 | 225 | 290 | 390 | 400 | 540 |
| 7/8" | 170 | 230 | 420 | 570 | 650 | 880 |
| 1" | 225 | 345 | 630 | 850 | 970 | 1320 |



SAE Gr. 2



SAE Gr. 5



SAE Gr. 8

Metric Bolt Torque Specifications

| Bolt Diameter | Torque Value | | | |
|---------------|--------------|-------|----------|-------|
| | Gr. 8.8 | | Gr. 10.9 | |
| | lbf•ft | N•m | lbf•ft | N•m |
| M3 | 0.4 | 0.5 | 1.3 | 1.8 |
| M4 | 2.2 | 3 | 3.3 | 4.5 |
| M6 | 7 | 10 | 11 | 15 |
| M8 | 18 | 25 | 26 | 35 |
| M10 | 37 | 50 | 52 | 70 |
| M12 | 66 | 90 | 92 | 125 |
| M14 | 83 | 112 | 116 | 158 |
| M16 | 166 | 225 | 229 | 310 |
| M20 | 321 | 435 | 450 | 610 |
| M30 | 1,103 | 1 495 | 1,550 | 2 100 |



8.8



10.9

Wheel Lug Torque

It is extremely important safety procedure to apply and maintain proper wheel mounting torque on your trailer axle. Torque wrenches are the best method to assure the proper amount of torque is being applied to a fastener.

Wheel lugs should be torqued before first road use and after each wheel removal. Check and re torque after the first 10 miles (16 km), 25 miles (40 km), and again at 50 miles (80 km). Check periodically thereafter.

NOTE: *Wheel lugs must be applied and maintained at the proper torque levels to prevent loose wheels, broken studs, and possible dangerous separation of wheels from your axle.*

- Start all lugs by hand to prevent cross threading.
- Tighten lugs in sequence, per wheel lug torque sequence chart.
- The tightening of the fasteners should be done in stages. Following the recommended sequence, tighten fasteners per wheel torque requirements chart.

| Wheel Lug Nut Torque | | | | |
|----------------------|---------------|------------------|------------------|--------------------|
| Wheel Size | Units | 1st Stage | 2nd Stage | 3rd Stage |
| 8" | lbf•ft N•m | 12–20 16–26 | 30–35 39–45.5 | 45–55 58.5–71.5 |
| 12" | lbf•ft N•m | 20–25 26–32.5 | 35–40 45.5–52 | 50–60 65–78 |
| 13" | lbf•ft N•m | 20–25 26–32.5 | 35–40 45.5–52 | 50–60 65–78 |
| 14" | lbf•ft N•m | 20–25 26–32.5 | 50–60 65–78 | 90–120 117–156 |
| 15" | lbf•ft N•m | 20–25 26–32.5 | 50–60 65–78 | 90–120 117–156 |
| 16" | lbf•ft N•m | 20–25 26–32.5 | 50–60 65–78 | 90–120 117–156 |

Wheel Lug Torque Pattern

