

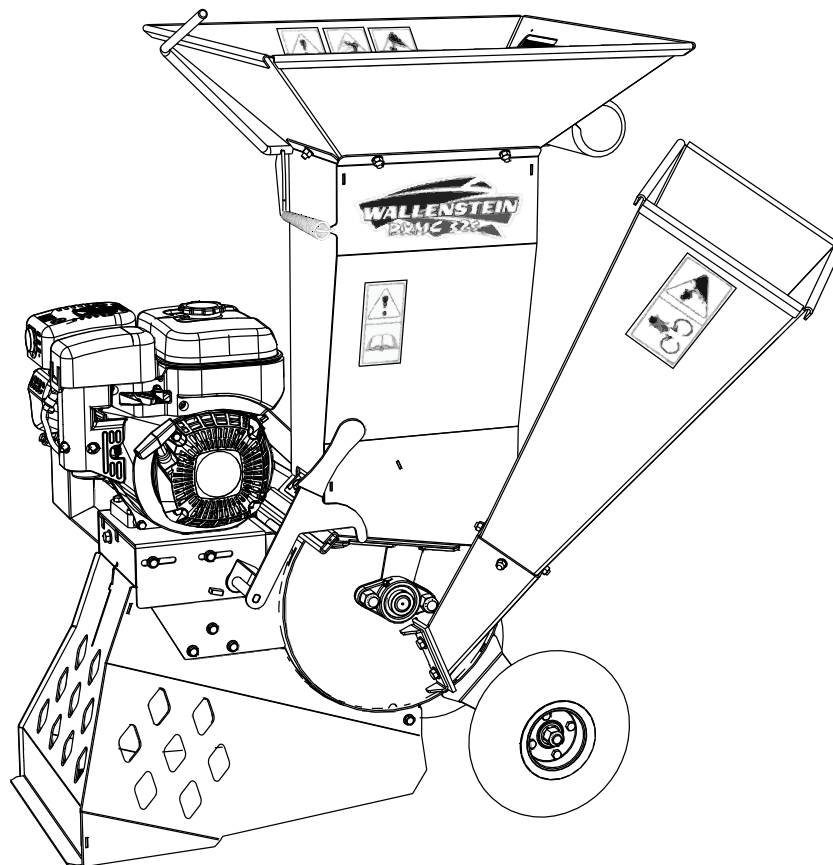


EMB Manufacturing Inc.  
4144 Boomer Line · St. Clements, On · N0B 2M0 · Canada  
Ph: (519) 699-9283 · Fax: (519) 699-4146  
www.embmfg.com

# BXMC32S Chipper - Shredder

## Parts Manual

Starting with S/N  
1MC32119



Refer to the operators  
manual for safe opera-  
tion and maintainance

## Foreword

EMB Mfg. has prepared this parts manual to assist customers in ordering quality OEM replacement parts.

Proper and regular service and replacing old, worn or broken parts with the correct Wallenstein parts are essential to prolonging the life of your Wallenstein product. Please refer to this manual before ordering any replacement parts.

All information contained in this parts manual is based on the latest product specification available at the time of printing this manual. If your product differs from the specifications contained within this manual contact EMB Mfg. for information.

EMB reserves the right to alter specifications on their products at any time.

Reproduction of this parts manual of any kind is prohibited without prior written permission from EMB Mfg.

For parts and information please contact your dealer. If your dealer is no longer available please go to our website: <http://www.embmfg.com> and click on "FIND A DEALER NEAR YOU" for information on a local dealer.

**Table of Contents**

**DRIVE TRAIN..... 4**

**DETAIL VIEW A: SHOWING SPRING / ACTUATOR CONFIGURATION..... 4**

**DETAIL VIEW SHOWING SPRING / BRAKE CLUTCH CONFIGURATION..... 4**

**UPPER ROTOR HOUSING ..... 5**

**DETAIL VIEW SHOWING EXTENSION ASSEMBLY ..... 5**

**LOWER ROTOR HOUSING ..... 6**

**BXMC32S KNIFE / SPACER SEQUENCE..... 6**

**LABEL LAYOUT ..... 7**

**LABEL LAYOUT ..... 8**

**ACCESSORIES ..... 9**

**MANUAL..... 9**

Maintenance should be performed by  
trained personnel only.



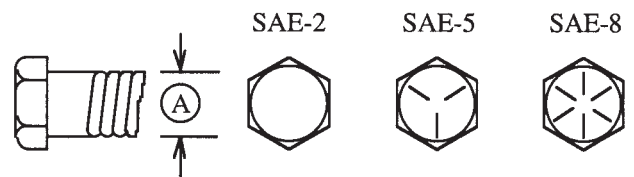
Refer to the operators  
manual for safe operation  
and maintenance

**Bolt Torque****CHECKING BOLT TORQUE**

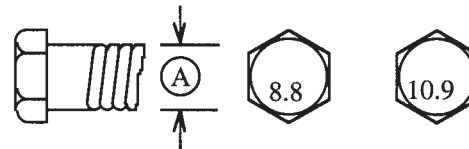
The tables shown below give correct torque values for various bolts and capscrews. Tighten all bolts to the torques specified in chart unless otherwise noted. Check tightness of bolts periodically, using bolt torque chart as a guide. Replace hardware with the same strength bolt.

**ENGLISH TORQUE SPECIFICATIONS**

Bolt Diameter "A"	Bolt Torque*					
	SAE 2 (N.m) (lb-ft)		SAE 5 (N.m) (lb-ft)		SAE 8 (N.m) (lb-ft)	
1/4"	8	6	12	9	17	12
5/16"	13	10	25	19	36	27
3/8"	27	20	45	33	63	45
7/16"	41	30	72	53	100	75
1/2"	61	45	110	80	155	115
9/16"	95	60	155	115	220	165
5/8"	128	95	215	160	305	220
3/4"	225	165	390	290	540	400
7/8"	230	170	570	420	880	650
1"	345	225	850	630	1320	970

**METRIC TORQUE SPECIFICATIONS**

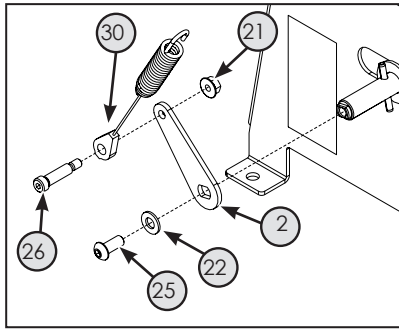
Bolt Diameter "A"	Bolt Torque*			
	8.8 (N.m) (lb-ft)		10.9 (N.m) (lb-ft)	
M3	.5	.4	1.8	1.3
M4	3	2.2	4.5	3.3
M5	6	4	9	7
M6	10	7	15	11
M8	25	18	35	26
M10	50	37	70	52
M12	90	66	125	92
M14	140	103	200	148
M16	225	166	310	229
M20	435	321	610	450
M24	750	553	1050	774
M30	1495	1103	2100	1550
M36	2600	1917	3675	2710



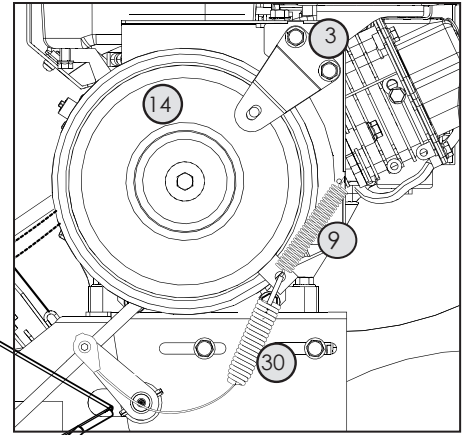
Torque figures indicated above are valid for non-greased or non-oiled threads and heads unless otherwise specified. Therefore, do not grease or oil bolts or capscrews unless otherwise specified in this manual. When using locking elements, increase torque values by 5%.

\* Torque value for bolts and capscrews are identified by their head markings.

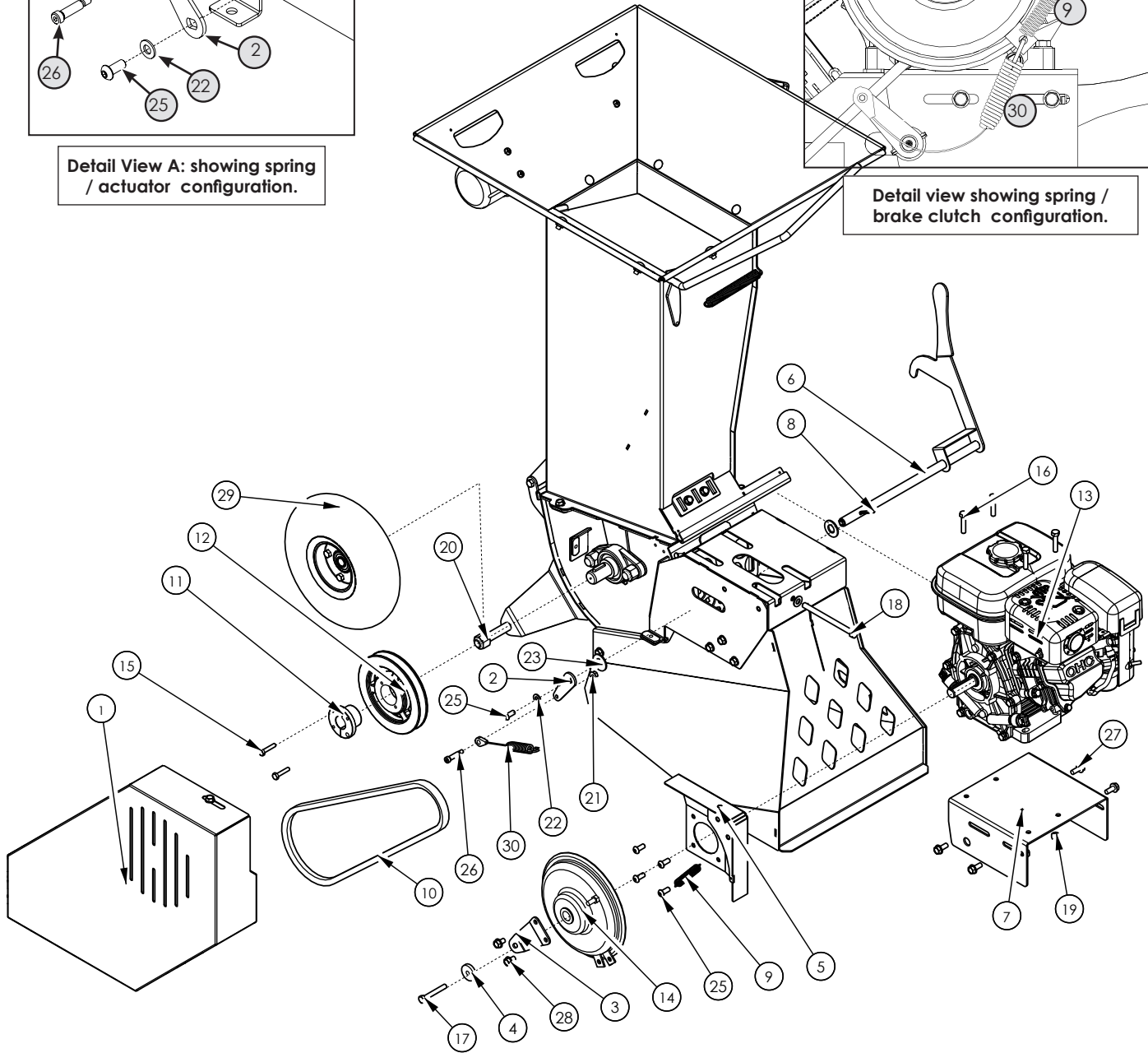
**Drive Train**



**Detail View A: showing spring / actuator configuration.**



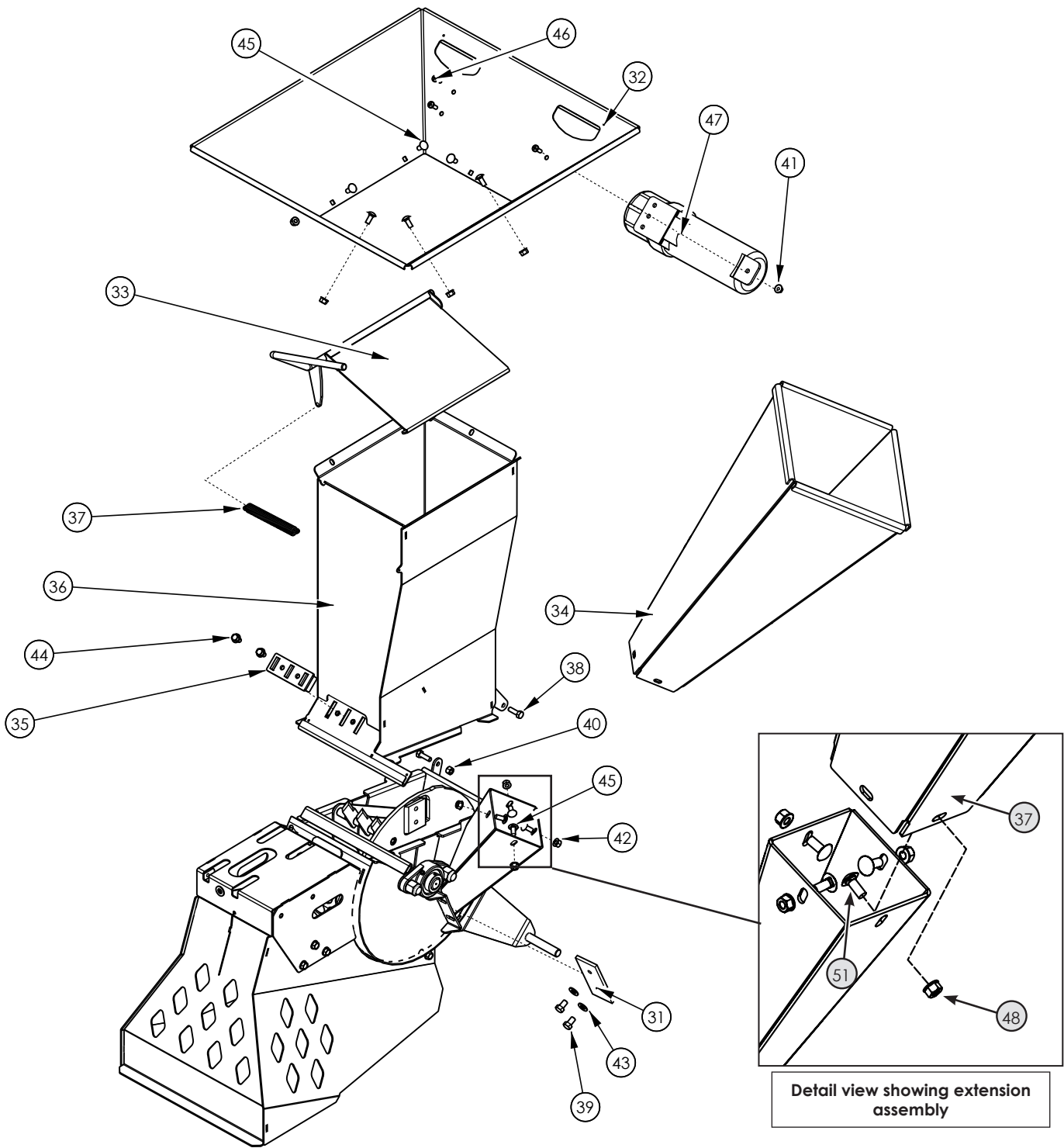
**Detail view showing spring / brake clutch configuration.**



Item	Part Number	Description	Qty
1	1073L233	Belt Shield	1
2	1073L248	Clutch Actuator Foot	1
3	1073L250	Clutch Keep	1
4	1073L255	Trap Washer	1
5	1073W124	Shield Mount Weldment	1
6	1074W121	Clutch Actuator	1
7	1074W122	Engine Plate	1
8	Z14151	Roll Pin, 3/16 x 1-1/2	1
9	Z31304	Spring 1/2 x 2-1/2 x .063	1
10	Z41161	Belt, B42	1
11	Z41510	"L" Bushing 1" Bore	1
12	Z41609	"B" Sheave, 6.25" Pitch	1
13	Z47701	Subaru SP210 Engine	1
14	Z49301	Brake Clutch CB167 Hex	1
15	Z71110	Bolt, 1/4NC x 1 Hex	2
16	Z71215	Bolt, 5/16NC x 1-1/2	4

Item	Part Number	Description	Qty
17	Z71277	Hex Bolt, 5/16NF x 2-1/4	1
18	Z71390FT	Hex Bolt, 3/8NC x 5 Full Threads	1
19	Z72221	Hex Lock Nut, 5/16NC	4
20	Z72261	Hex Lock Nut, 5/8NC	2
21	Z72511	Hex Flange Nut, 1/4NC	1
22	Z73122	Flat Washer, 5/16	1
23	Z73161	Flat Washer, 5/8	2
25	Z75351	Button Head Cap Screw, 5/16NF x 3/4	5
26	Z75521	Shoulder Bolt, 5/16 x 1	1
27	Z76121	Flange Bolt, 5/16NC x 3/4	7
28	Z76122	Flange Bolt, 5/16NC x 1/2	2
29	Z91307	NHS Tire 4.10-3.50-4 LRB	2
30	Z92117	Clutch Actuator Cable	1

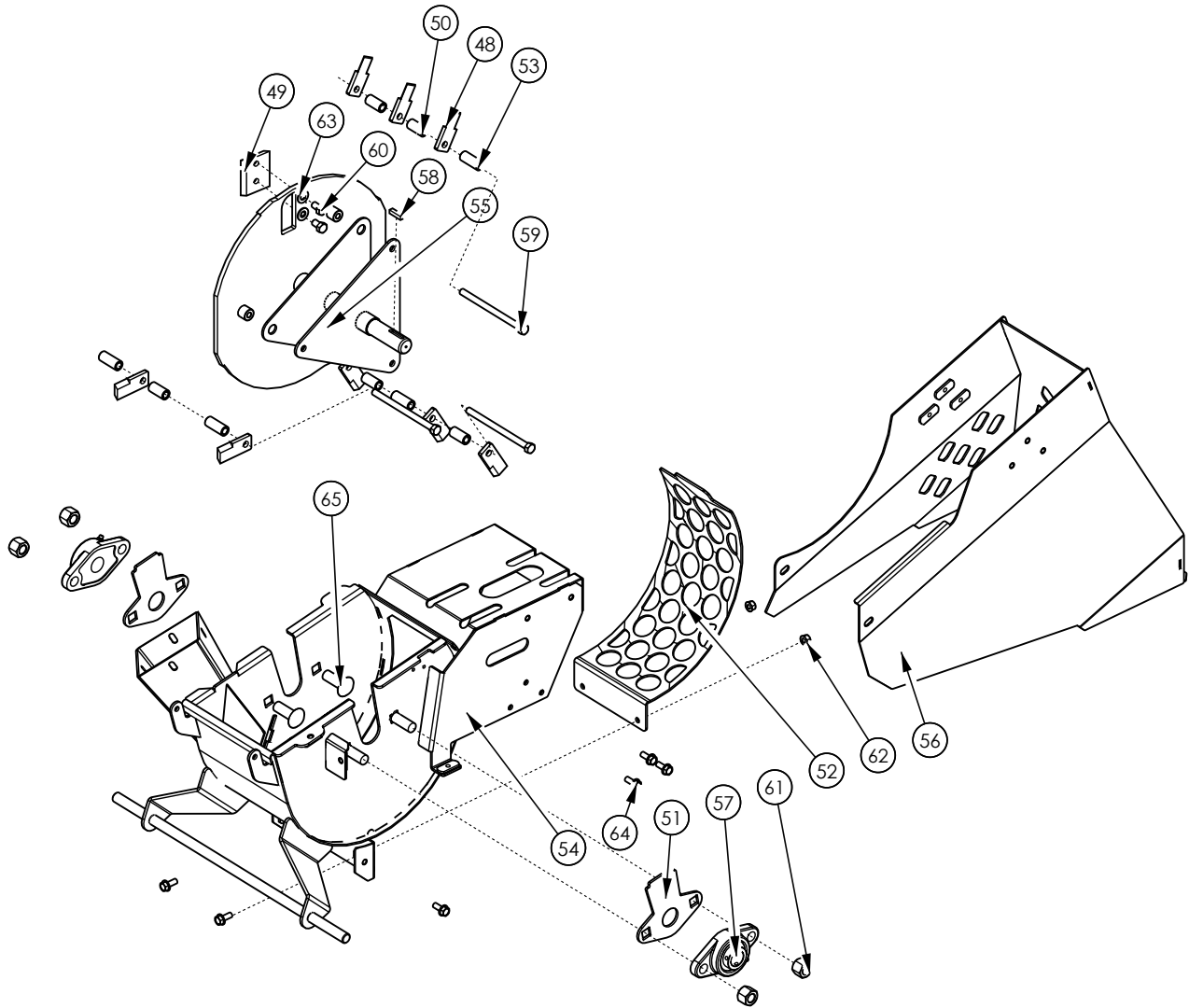
**Upper Rotor Housing**



Item	Part Number	Description	Qty
31	1056M304	Knife, 3" Ledger	1
32	1073W106	Hopper	1
33	1073W107	Flap, Hopper	1
34	1073W112	Extension Weldment	1
35	1073W125	Chop Block	1
36	1074W104	Weldment, Upper Housing	1
37	Z31301	Spring 17mm x 140mm Medium	1
38	Z71210	Hex Bolt, 5/16NC x 1	2
39	Z71372G8	Hex Bolt, 3/8NF x 5/8 G8	2

Item	Part Number	Description	Qty
40	Z72221	Hex Lock Nut, 5/16NC	2
41	Z72511	Hex Flange Nut, 1/4NC	3
42	Z72521	Flange Nut 5/16NC	6
43	Z73131	Flat Washer, 3/8	2
44	Z76122	Flange Bolt, 5/16NC x 1/2	4
45	Z76221	Carriage Bolt, 5/16NC x 3/4	10
46	Z78301	Machine Screw, 1/4-20NC x 3/4	3
47	Z96503	Manual Tube 3-1/2 Short	1

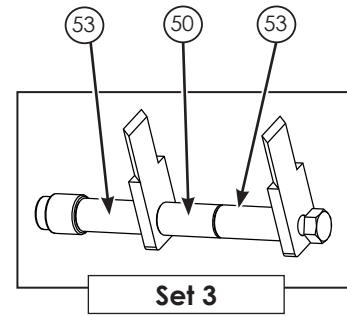
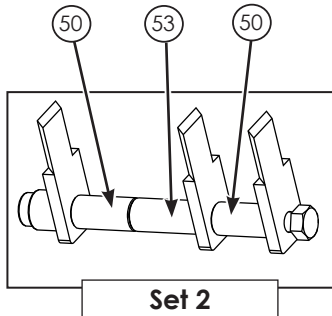
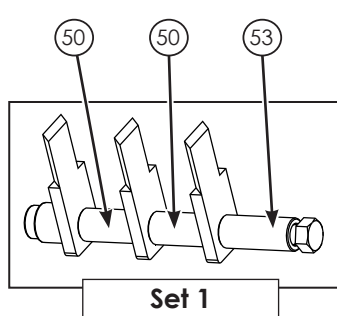
**Lower Rotor Housing**



Item	Part Number	Description	Qty
48	1056M108	Knife, Shredder	8
49	1056M303	Knife, 3" Rotor	2
50	1073M104	Spacer, Shredder 1.25	5
51	1074L216	Bearing Cover Plate	2
52	1074L250	1-1/2" Round Screen	1
53	1074M105	Filler Spacer	4
54	1074W102	Weldment, Bottom Housing	1
55	1074W103	Rotor	1
56	1074W120	Shredder Guard	1
57	Z25101	FL 2-Bolt Flange Bearing 1"	2

Item	Part Number	Description	Qty
58	Z46533	Key, 1/4 x 1/4 x 1	1
59	Z71355G8	Hex Bolt, 3/8-16 x 5-1/2 G8	3
60	Z71372G8	Hex Bolt, 3/8NF x 5/8 G8	4
61	Z72261	Hex Lock Nut, 5/8NC	4
62	Z72521	Flange Nut 5/16NC	2
63	Z73131	Flat Washer, 3/8	5
64	Z76121	Flange Bolt, 5/16NC x 3/4	10
65	Z76262	Carriage Bolt, 5/8NC x 1-3/4	4

**BXMC32S knife / spacer sequence**



Label Layout

Use Decal Kit: BXMC32S-DKIT



Z94059



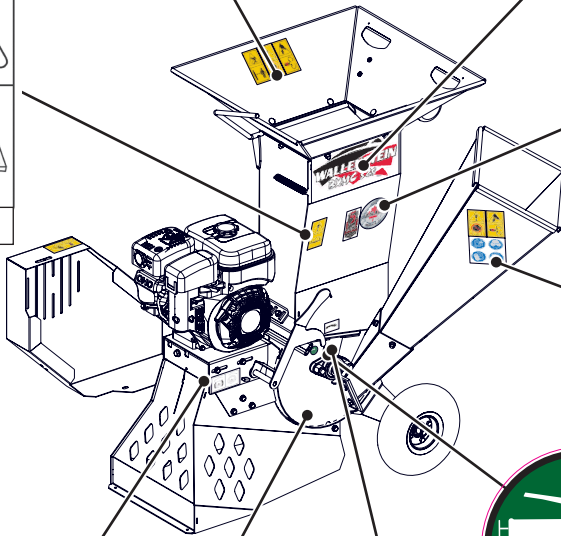
Z94163



Z94617



Z94119



Z94232

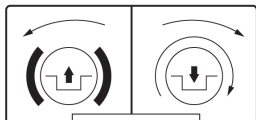
Z94120



Z94427



Z94203



Z94410

Serial Plate Location



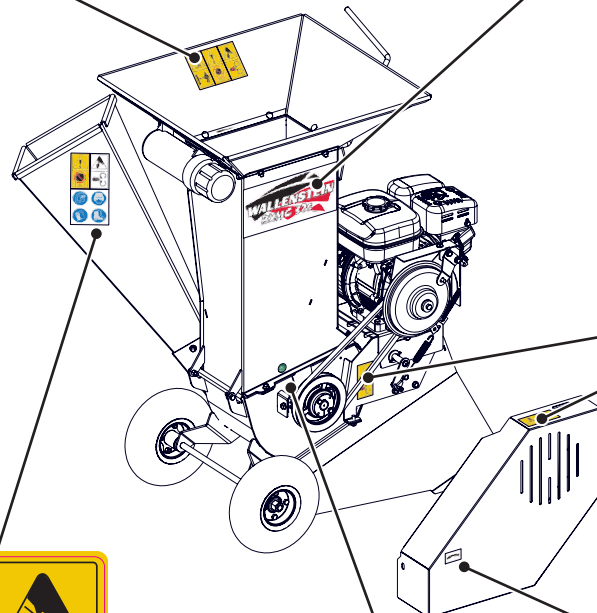
Z94144



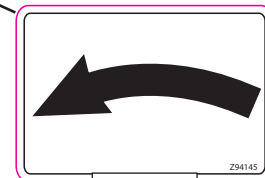
Label Layout



Z94059



Z94427

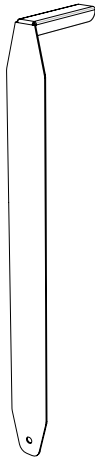


Z94145

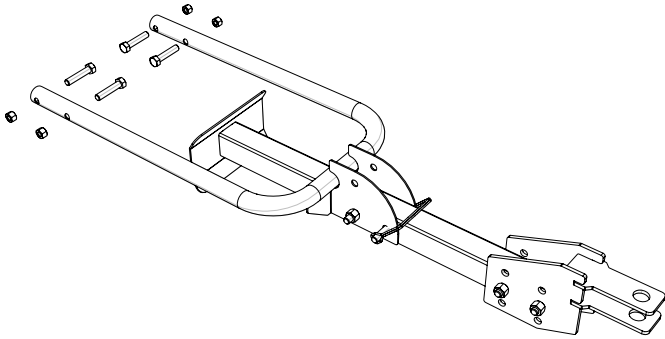


Z94203

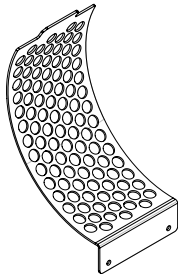
**Accessories**



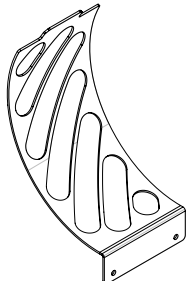
#1012L269 LEDGER CLEARANCE SETTING GAUGE



#1082A355 GARDEN TRACTOR HITCH



#1074L240 3/4" ROUND SCREEN (19MM)



#1074L260 1 1/2" X 7.0 OBOURND WET SCREEN

**Manual**

**WALLENSTEIN**  
BY EMB MFG INC.

EMB Manufacturing Inc.  
4144 Boomer Line - St. Clements, On - N0B 2M0 - Canada  
Ph: (519) 699-8283 - Fax: (519) 699-4146  
www.embmfg.com

BXMC32B

BXMC32S

**CHIPPER-SHREDDER  
MODELS BXMC32B & BXMC32S**

**OPERATOR'S MANUAL**

PRINTED IN CANADA  
Rev: 231211

PART NUMBER: Z97061

**Z97061**

Available as a download at  
[www.embmfg.com](http://www.embmfg.com)

Call your dealer for pricing and availability