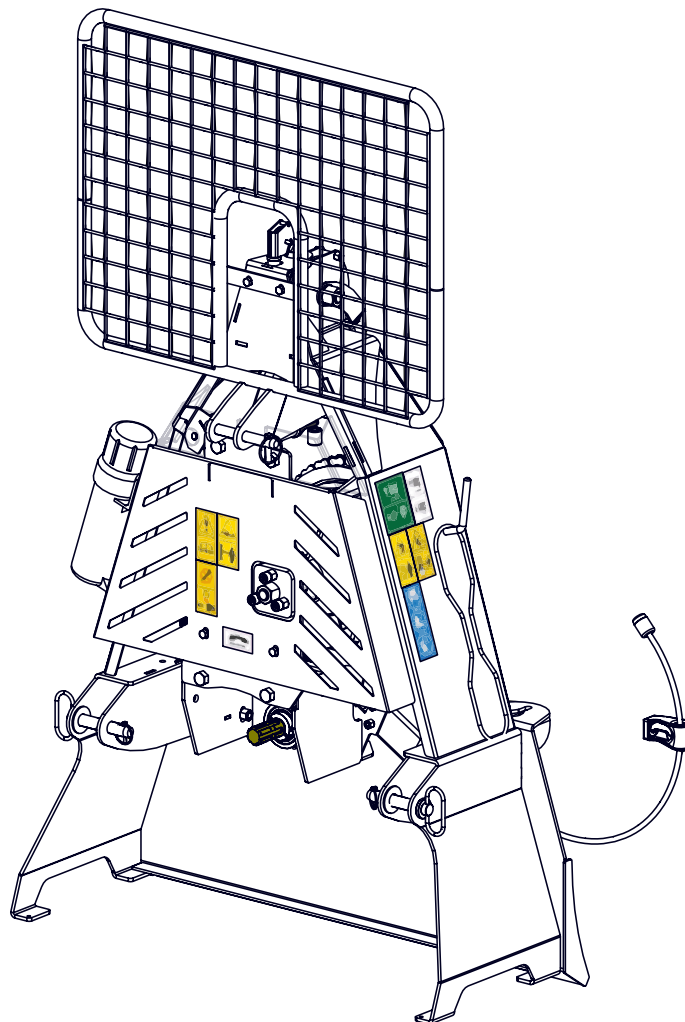




EMB Manufacturing Inc.
4144 Boomer Line · St. Clements, On · N0B 2M0 · Canada
Ph: (519) 699-9283 · Fax: (519) 699-4146
www.wallensteinequipment.com

FX66 Skidding Winch Parts Manual

S/N 5661 & After



Refer to the operators
manual for safe
operation and
maintenance

Foreword

EMB Mfg. has prepared this parts manual to assist customers in ordering quality OEM replacement parts.

Proper and regular service and replacing old, worn or broken parts with the correct Wallenstein parts are essential to prolonging the life of your Wallenstein product. Please refer to this manual before ordering any replacement parts.

All information contained in this parts manual is based on the latest product specification available at the time of printing this manual. If your product differs from the specifications contained within this manual contact EMB Mfg. for information.

EMB reserves the right to alter specifications on their products at any time.

Reproduction of this parts manual of any kind is prohibited without prior written permission from EMB Mfg.

For parts and information please contact your dealer. If your dealer is no longer available please go to our website: <http://www.wallensteinequipment.com> and click on "FIND A DEALER NEAR YOU" for information on a local dealer.

Table of Contents

Bolt Torque.....	4
Main Assembly	5
Clutch Pulley	6
Main Assembly - Parts List.....	6
Cable Drum Assembly	7
Clutch Assembly.....	8
Cable Frame Assembly	9
Engagement Lever Assembly	10
Chain Tightener Assembly.....	10
Top Cable Pulley Assembly.....	11
PTO Shaft	12
Cable Install.....	13
Brake & Clutch Rope Routing.....	14
Label Layout	15
Accessories.....	16

Maintenance should be performed by
trained personnel only.



Refer to the operators
manual for safe
operation and
maintenance

Bolt Torque

CHECKING BOLT TORQUE

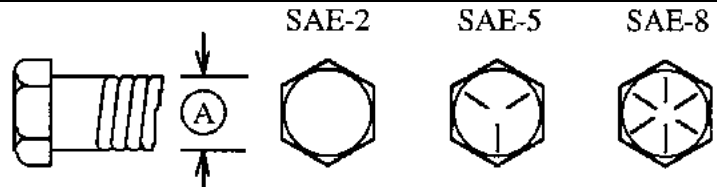
The tables shown below give correct torque values for various bolts and capscrews. Tighten all bolts to the torques specified in chart unless otherwise noted. Check tightness of bolts periodically, using bolt torque chart as a guide. Replace hardware with the same strength bolt.

Torque figures indicated above are valid for non-greased or non-oiled threads and heads unless otherwise specified. Therefore, do not grease or oil bolts or capscrews unless otherwise specified in this manual. When using locking elements, increase torque values by 5%.

* Torque value for bolts and capscrews are identified by their head markings.

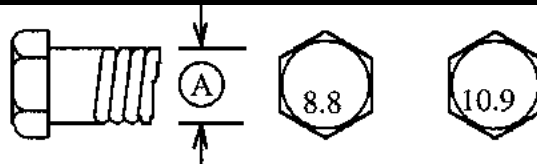
ENGLISH TORQUE SPECIFICATIONS

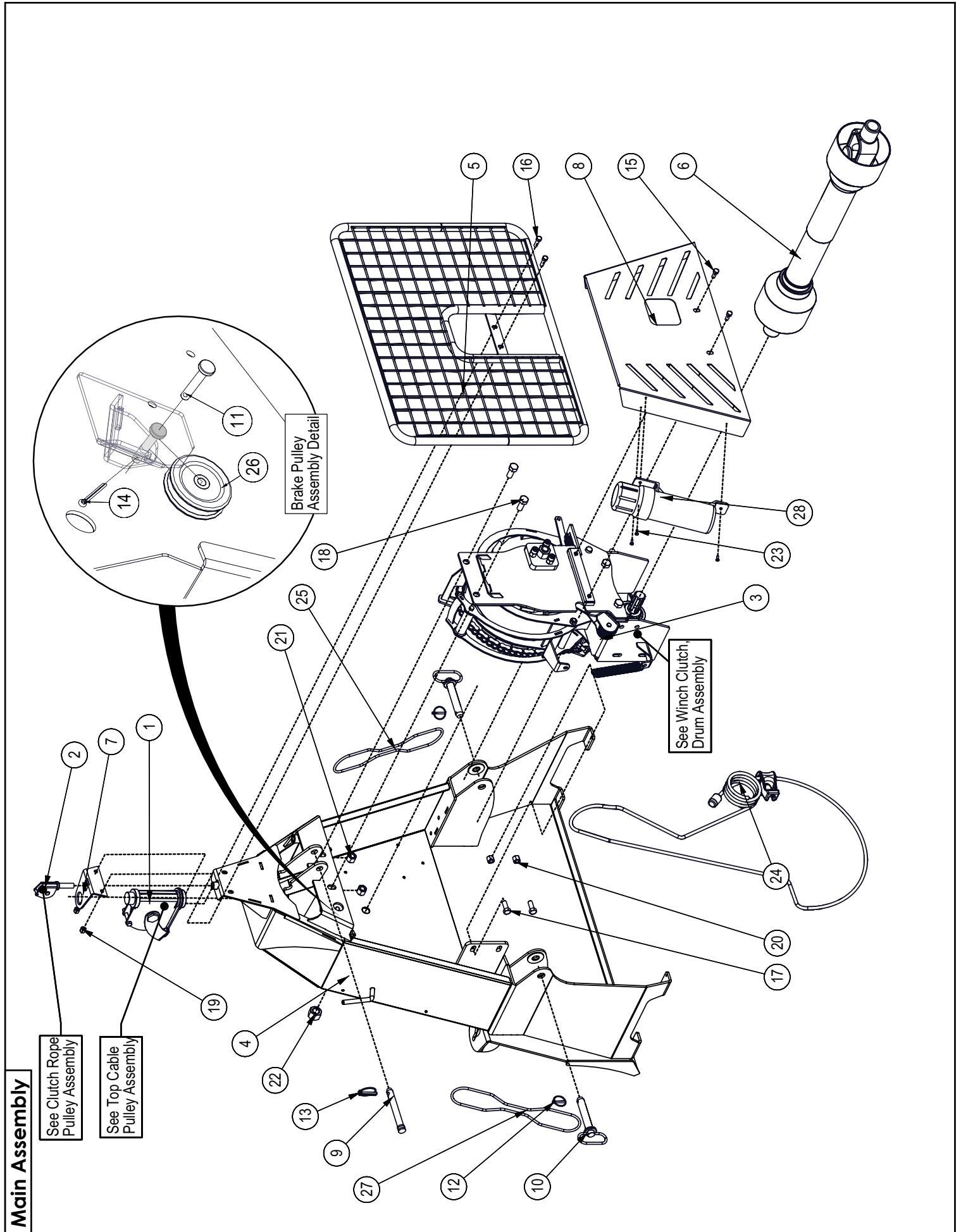
Bolt Diameter "A"	Bolt Torque*					
	SAE 2 (N.m) (lb-ft)		SAE 5 (N.m) (lb-ft)		SAE 8 (N.m) (lb-ft)	
1/4"	8	6	12	9	17	12
5/16"	13	10	25	19	36	27
3/8"	27	20	45	33	63	45
7/16"	41	30	72	53	100	75
1/2"	61	45	110	80	155	115
9/16"	95	60	155	115	220	165
5/8"	128	95	215	160	305	220
3/4"	225	165	390	290	540	400
7/8"	230	170	570	420	880	650
1"	345	225	850	630	1320	970



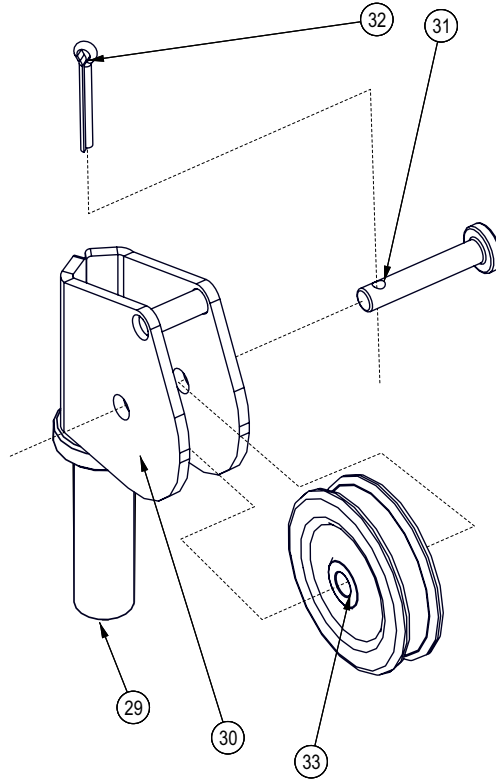
METRIC TORQUE SPECIFICATIONS

Bolt Diameter "A"	Bolt Torque*			
	8.8 (N.m) (lb-ft)		10.9 (N.m) (lb-ft)	
M3	0.5	0.4	1.8	1.3
M4	3	2.2	4.5	3.3
M5	6	4	9	7
M6	10	7	15	11
M8	25	18	35	26
M10	50	37	70	52
M12	90	66	125	92
M14	140	103	200	148
M16	225	166	310	229
M20	435	321	610	450
M24	750	553	1050	774
M30	1495	1103	2100	1550
M36	2600	1917	3675	2710





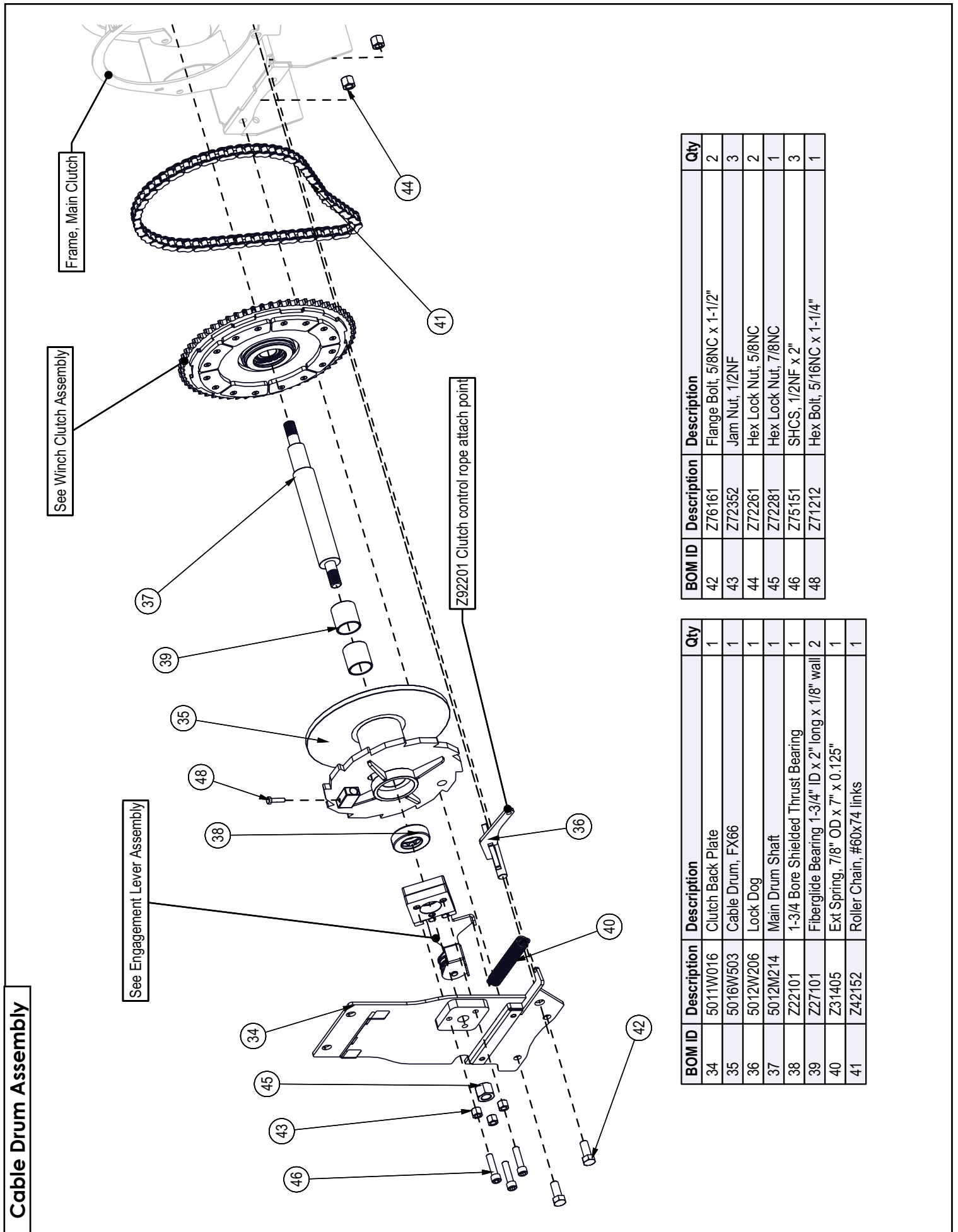
Clutch Pulley



BOM ID	Description	Description	Qty
29	5012A207	Clutch Rope Pulley	1
30	5012W215	Clutch Rope Pulley Housing	1
31	Z11311	Clevis Pin, 1/4" x 1-1/8"	1
32	Z12311	Cotter Pin, 1/8" x 1"	1
33	Z92203	1/4 Groove Pulley 2 Diam.	1

Main Assembly - Parts List.

BOM ID	Description	Description	Qty
1	5011A514	Top Cable Pulley	1
2	5012A207	Clutch Rope Pulley	1
3	5016A532	Winch Clutch, FX66	1
4	5016W501	Main Frame	1
5	5016W502	Safety Screen	1
6	Z44402	#4 Global PTO Shaft M8 Shear	1
7	5011L636	Bracket, Top Pulley Capture	1
8	5011L686	Lower Protective Shield	1
9	Z11123	Toplink Pin, 3/4" x 4-3/4"	1
10	Z11251	Hitch Pin, 7/8" x 4-1/4"	2
11	Z11311	Clevis Pin, 1/4" x 1-1/8"	1
12	Z12110	Lynch Pin, 3/16"	2
13	Z12140	Lynch Pin, 7/16"	1
14	Z12311	Cotter Pin, 1/8" x 1"	1
15	Z76133	Flange Bolt, 3/8NC x 3/4"	2
16	Z76137	Flange Bolt, 1/2NC x 1-1/4"	2
17	Z76156	Flange Bolt, 5/8NC x 1-1/2"	2
18	Z76161	Flange Bolt, 5/8NC x 1-1/2"	2
19	Z72231	Hex Lock Nut, 3/8NC	2
20	Z72251	Hex Lock Nut, 1/2NC	2
21	Z72261	Hex Lock Nut, 5/8NC	2
22	Z72281	Hex Lock Nut, 7/8NC	1
23	Z76721	Self-tapping Screw, 1/4 x 3/4"	3
24	Z92119	Winch Cable, 3/8" x 165ft, Forged End	1
25	Z92201	Clutch Control Rope	1
26	Z92203	1/4 Groove Pulley 2 Diam.	1
27	Z92205	Drum Brake Rope 18'	1
28	Z96503	Manual Tube 3-1/2 Short	1



Cable Drum Assembly

Frame, Main Clutch

See Winch Clutch Assembly

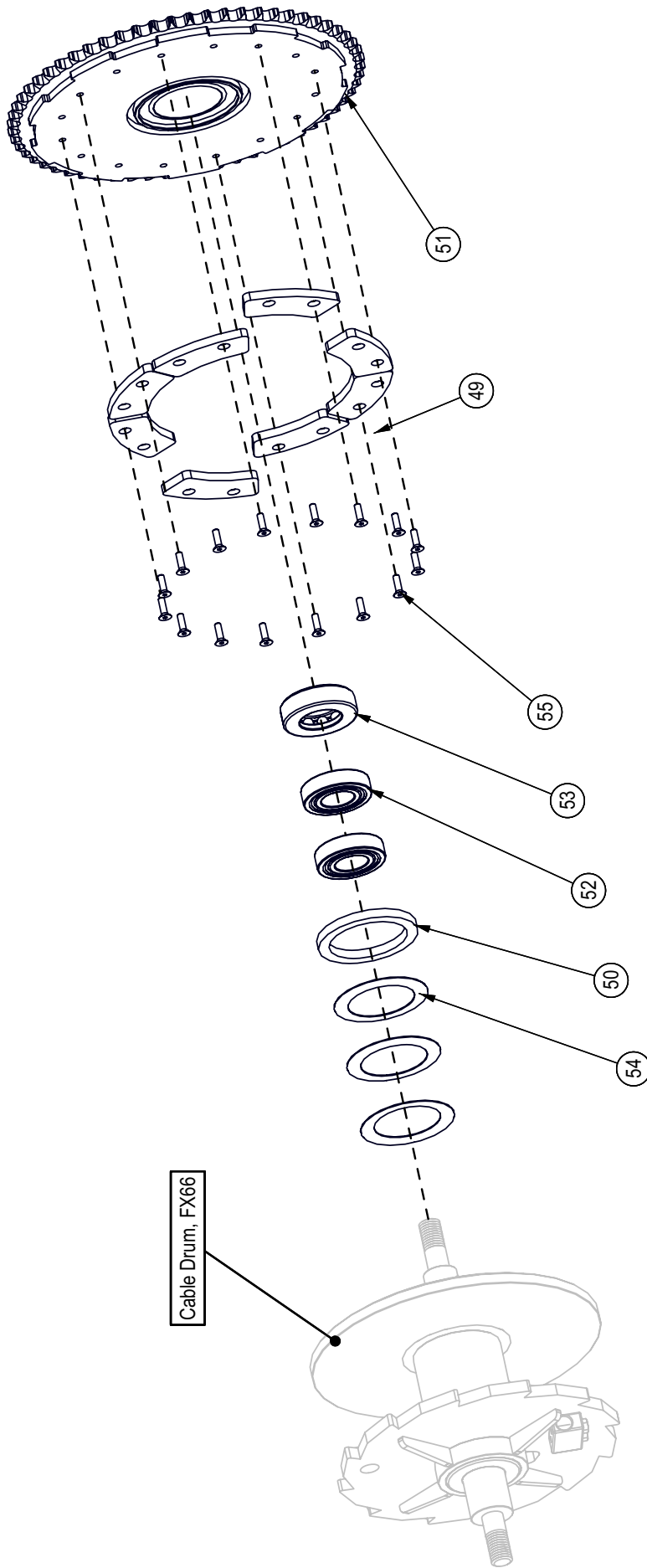
See Engagement Lever Assembly

Z92201 Clutch control rope attach point

BOM ID	Description	Description	Qty
42	Z76161	Flange Bolt, 5/8NC x 1-1/2"	2
43	Z72352	Jam Nut, 1/2NF	3
44	Z72261	Hex Lock Nut, 5/8NC	2
45	Z72281	Hex Lock Nut, 7/8NC	1
46	Z75151	SHCS, 1/2NF x 2"	3
48	Z71212	Hex Bolt, 5/16NC x 1-1/4"	1

BOM ID	Description	Description	Qty
34	5011W016	Clutch Back Plate	1
35	5016W503	Cable Drum, FX66	1
36	5012W206	Lock Dog	1
37	5012M214	Main Drum Shaft	1
38	Z22101	1-3/4 Bore Shielded Thrust Bearing	1
39	Z27101	Fiberglass Bearing 1-3/4" ID x 2" long x 1/8" wall	2
40	Z31405	Ext Spring, 7/8" OD x 7" x 0.125"	1
41	Z42152	Roller Chain, #60x74 links	1

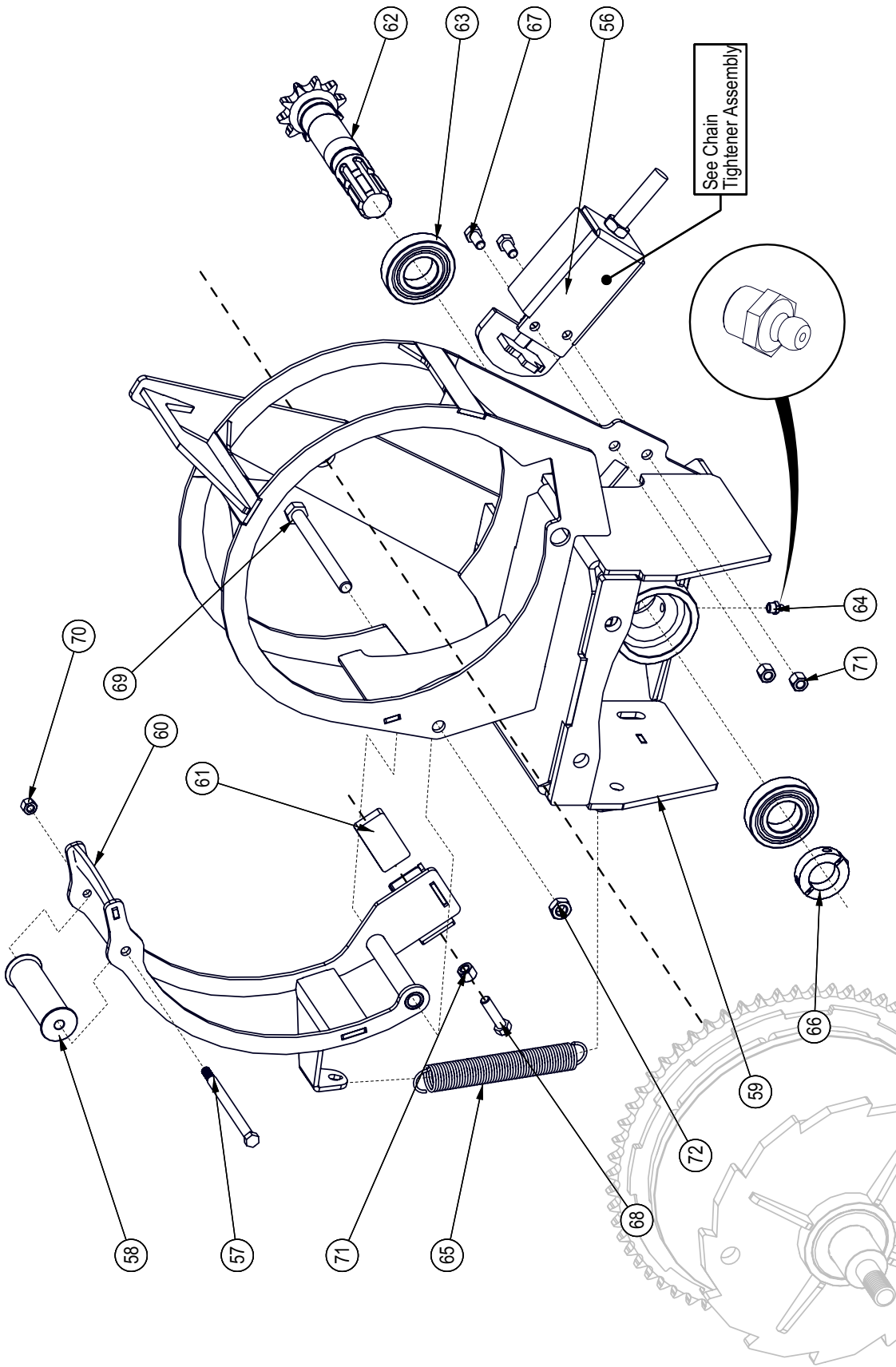
Clutch Assembly



BOM ID	Description	Description	Qty
53	Z22101	1-3/4 Bore Shielded Thrust Bearing	1
54	Z34101	Cup Spring, 2-3/4" ID x 4" OD x 1mm	3
55	Z75211	FHCS, 1/4NC x 7/8"	16

BOM ID	Description	Description	Qty
49	5011S152	Pad, Sprocket	8
50	5012M228	Nylon Bearing Washer	1
51	5012W209	60 Tooth Sprocket Weldment	1
52	Z21202	Ball Bearing 6207-2RS	2

Cable Frame Assembly

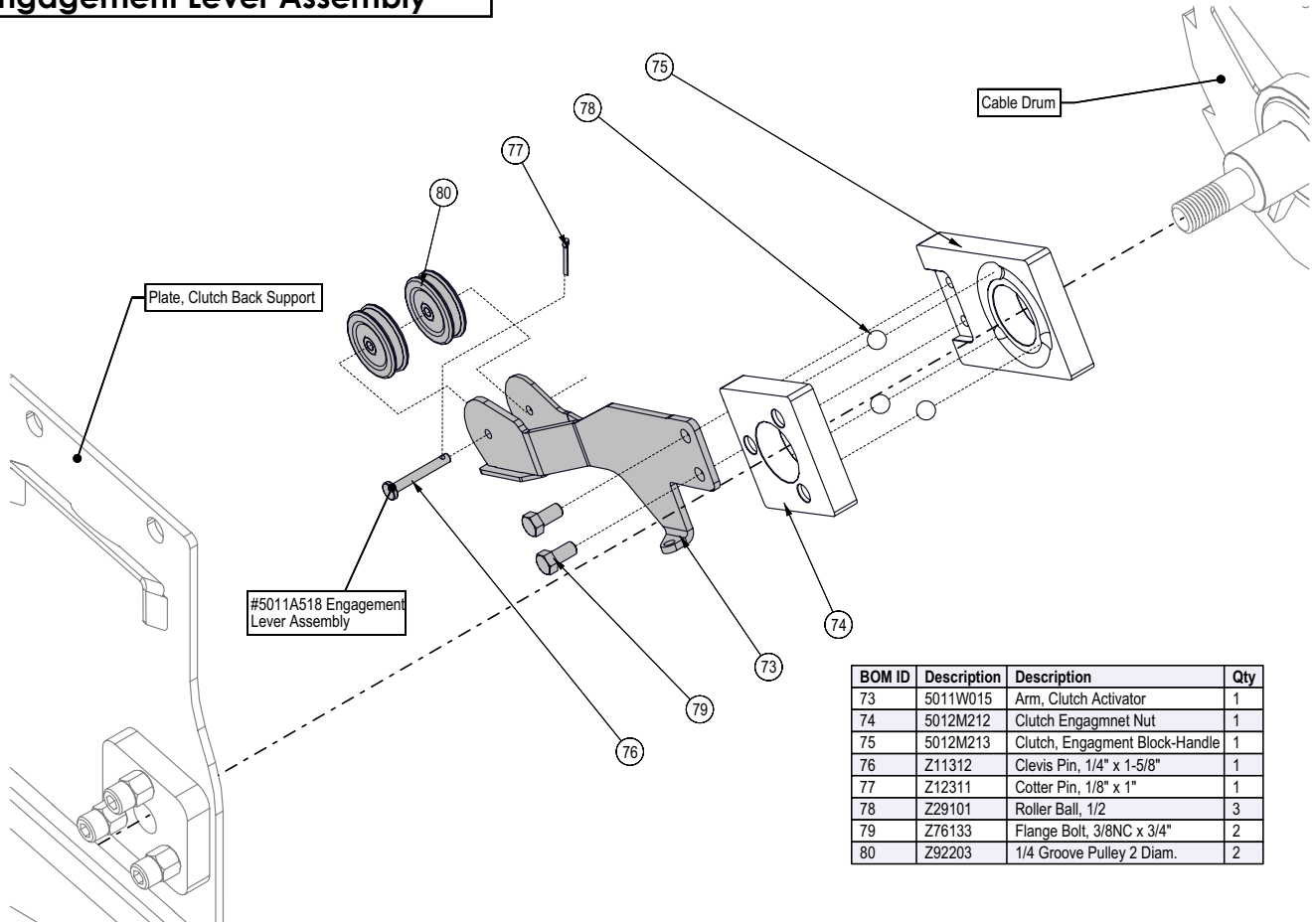


BOM ID	Description	Qty
56	5011A520 Assembly, Chain Tightener	1
57	5011M824 Pin, Cable Roller	1
58	5011S155 Roller, Brake Arm	1
59	5011W002 Frame, Main Clutch	1
60	5011W007 Arm Frame, Anti-Tangle	1
61	5012M204 Block, Drum Brake	1

BOM ID	Description	Qty
62	5012W208 PTO Spline Shaft w/ Sprocket	1
63	Z21202 Ball Bearing 6207-2RS	2
64	Z29201 Grease Fitting, 1/8NPT	1
65	Z31403 Ext Spring, 27mm OD x 178mm x 0.105"	1
66	Z46311 Clamp-on Shaft Collar	1
67	Z71307 Hex Bolt, 3/8NC x 3/4"	2

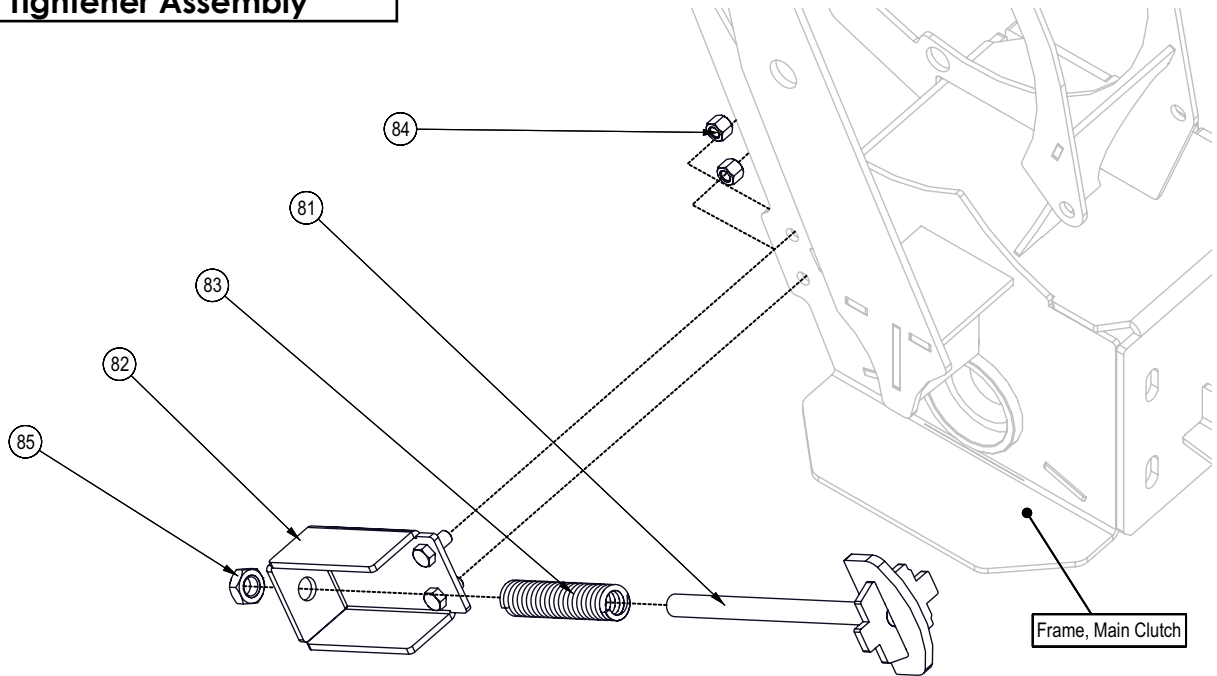
BOM ID	Description	Qty
68	Z71315 Hex Bolt, 3/8NC x 1-1/2"	1
69	Z71555 Hex Bolt, 1/2NC x 5-1/2"	1
70	Z72221 Hex Lock Nut, 5/16NC	1
71	Z72231 Hex Lock Nut, 3/8NC	3
72	Z72351 Jam Nut, 1/2NC	1

Engagement Lever Assembly



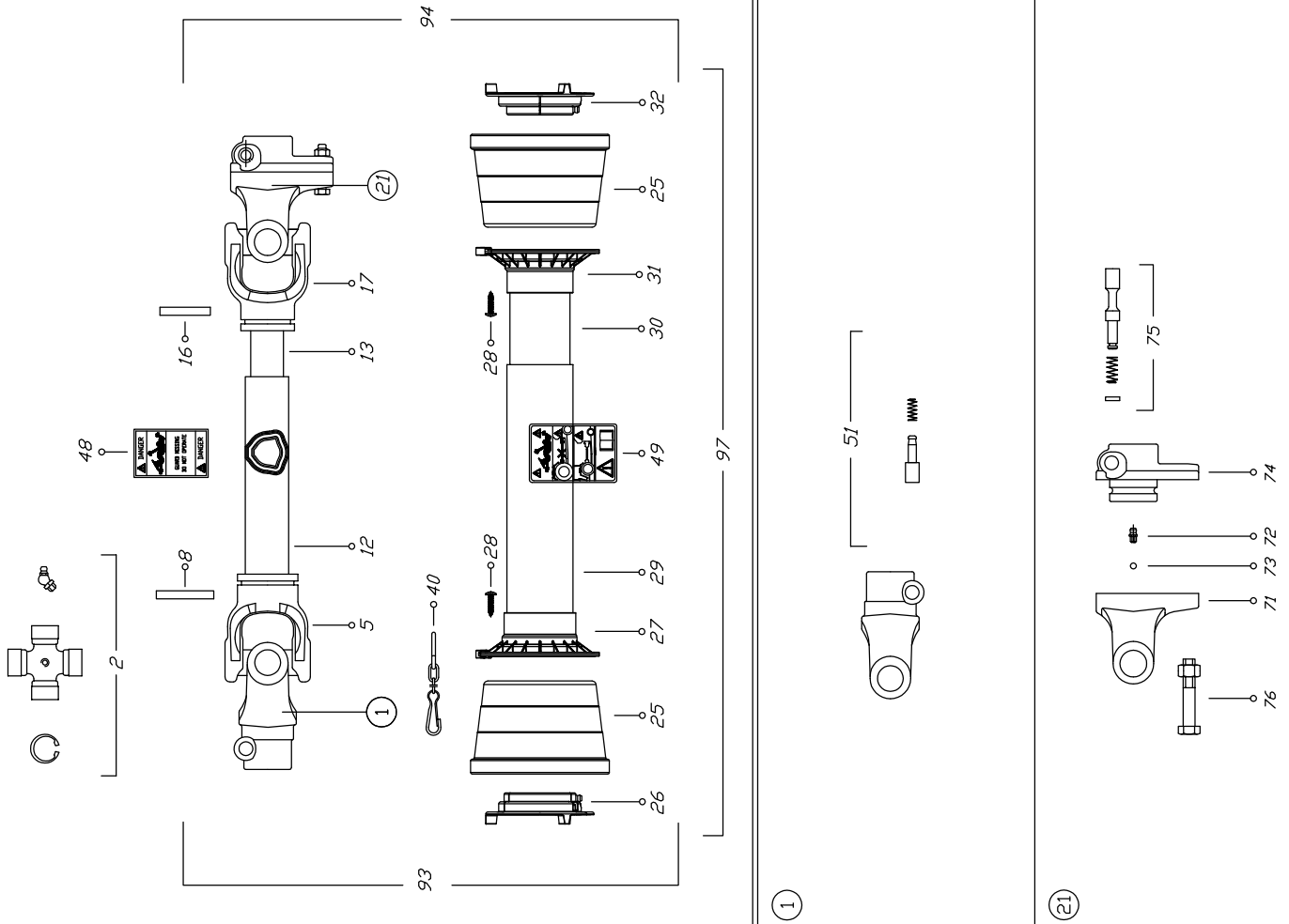
BOM ID	Description	Description	Qty
73	5011W015	Arm, Clutch Activator	1
74	5012M212	Clutch Engagmet Nut	1
75	5012M213	Clutch, Engagmet Block-Handle	1
76	Z11312	Clevis Pin, 1/4" x 1-5/8"	1
77	Z12311	Cotter Pin, 1/8" x 1"	1
78	Z29101	Roller Ball, 1/2	3
79	Z76133	Flange Bolt, 3/8NC x 3/4"	2
80	Z92203	1/4 Groove Pulley 2 Diam.	2

Chain Tightener Assembly



BOM ID	Description	Description	Qty
81	5012W205	Chain Tightener Plunger	1
82	5011L631	Base, Auto Chain Tightener	1
83	Z32401	Comp Spring, 1" OD x 7" x 0.162"	1
84	Z72531	Serrated Flange Locknut, 3/8NC	2
85	Z72261	Hex Lock Nut, 5/8NC	1

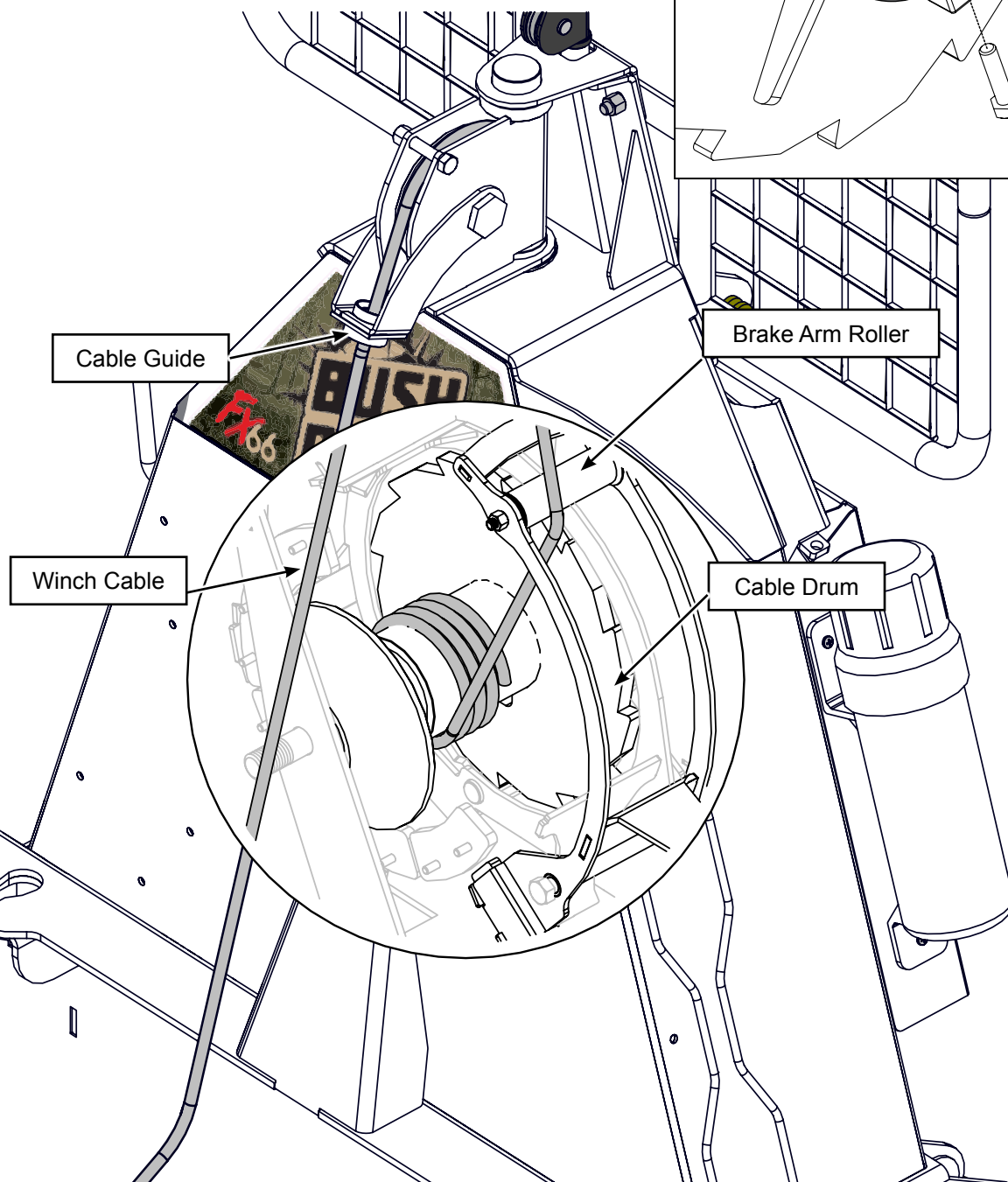
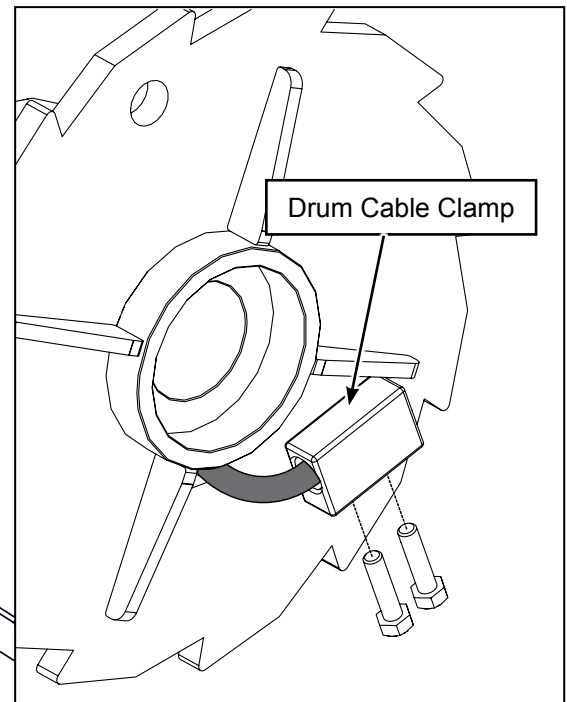
PTO Shaft



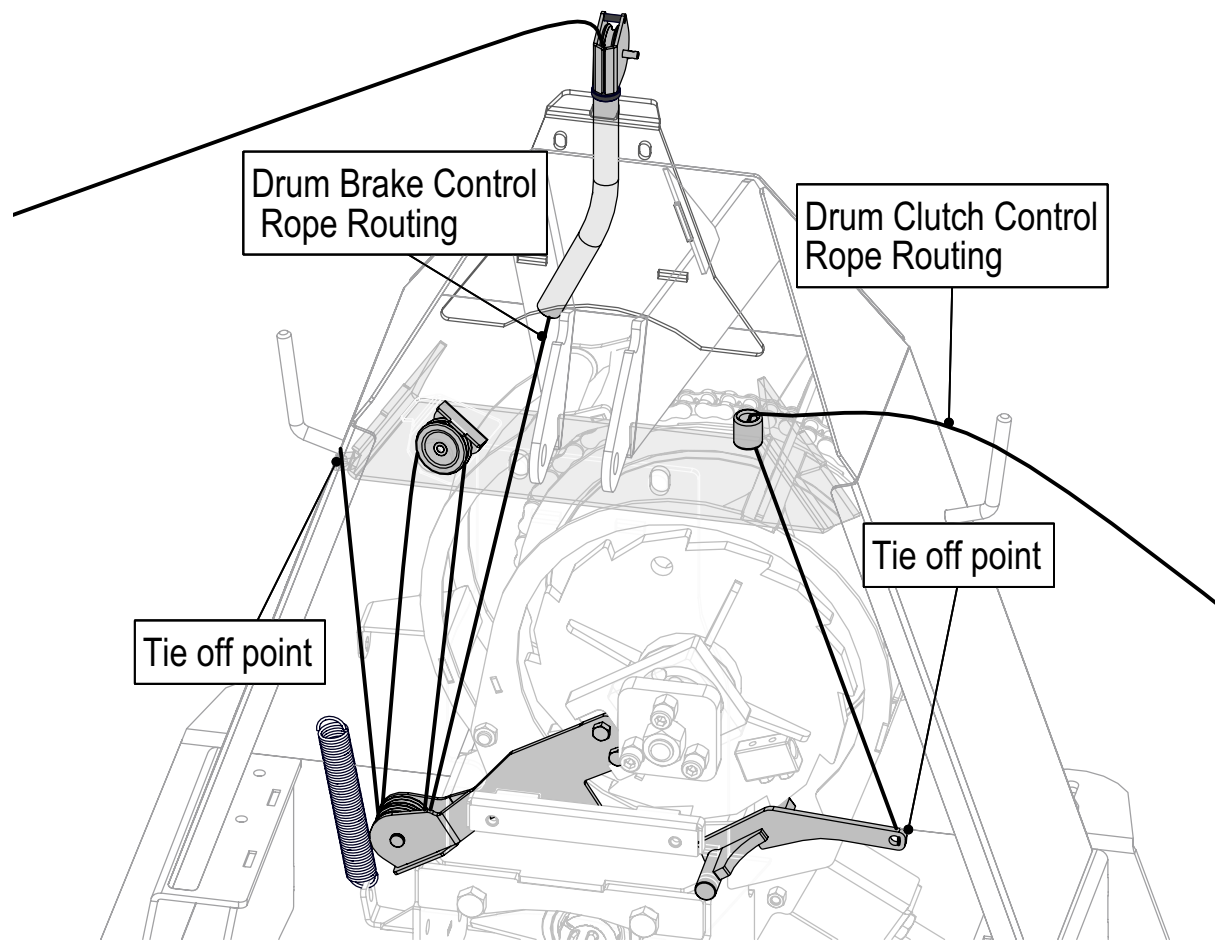
Binacchi SPARE PARTS LIST : B4N061USA60098			
POS.	DESCRIPTION	Q.	Part #
01	YOKE	1	0800403
02	CROSS JOURNAL ASS.	2	08204
05	OUTER TUBE YOKE	1	08004021
08	FLEXIBLE PIN	1	098700860
12	CM. 100 CARDAN TUBE(*)	1	09881433100
13	CM. 100 CARDAN TUBE(*)	1	09881364100
16	FLEXIBLE PIN	1	098700855
17	INNER TUBE YOKE	1	08004011
21	SHEAR BOLT M8X1.25X45	1	Z44902
25	CONE SHIELD BELL 03-04	2	021904C001
26	OUTER BEARING 03-04	1	025504C001
27	OUTER BASE CONE 03-04	1	025404C001
28	SCREW	6	0998052242
29	OUTER SAFETY TUBE	1	0988966NB4061
30	INNER SAFETY TUBE	1	0988961NB4061
31	INNER BASE CONE 03-04	1	025404C002
32	INNER BEARING 03-04	1	025504C002
40	CHAIN	1	0252000001
48	LABEL DANGER OUTER DRIVE TUBE	1	09872006
49	EXTERNAL SHIELD LABEL	1	09872003
51	COMPLETE PUSH BUTTTON	1	0986014047
71	YOKE FOR LB4	1	08896904
72	GREASE NIPPLE	1	0984010150
73	STEEL BALL	23	098680104
74	HUB	1	088964
75	PUSH PIN SET	1	0986014075
76	NUT AND BOLT M8 x 1.25 x 45 10.9	1	Z44902
93	OUTER HALF SHAFT	1	B4N061US2
94	INNER HALF SHAFT	1	B4N061US1098
97	SAFETY GUARD	1	083US04061

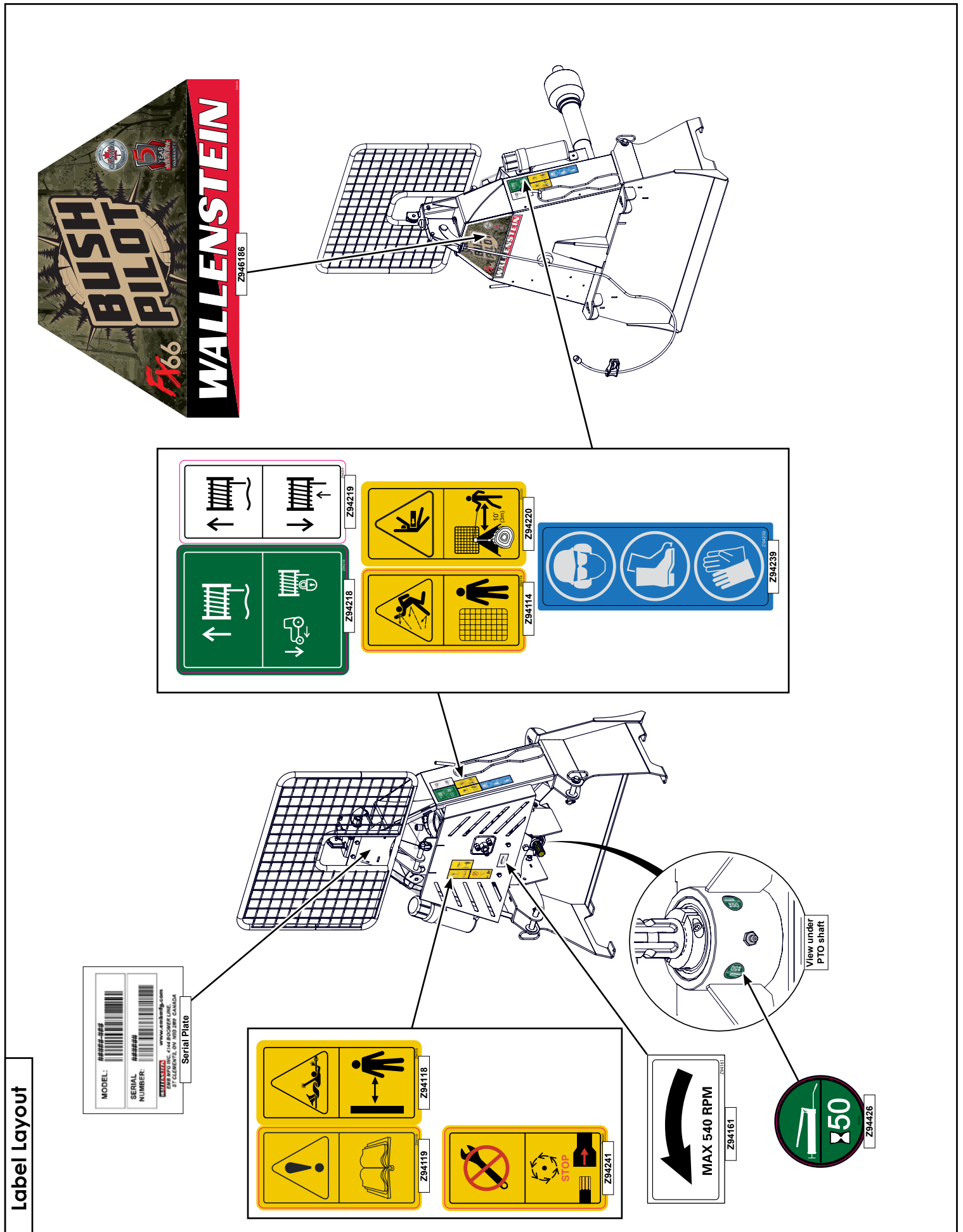
Cable Install

Feed cable through the eye of cable guide and over the pulley down into drum. Cable must be routed under brake roller on drum band coiler. Insert cable into hole in drum and tighten clamp.



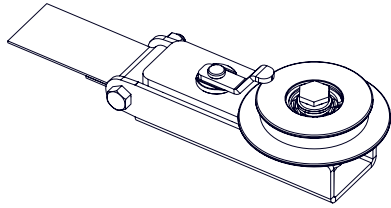
Brake & Clutch Rope Routing



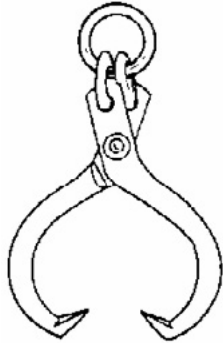


Label Layout

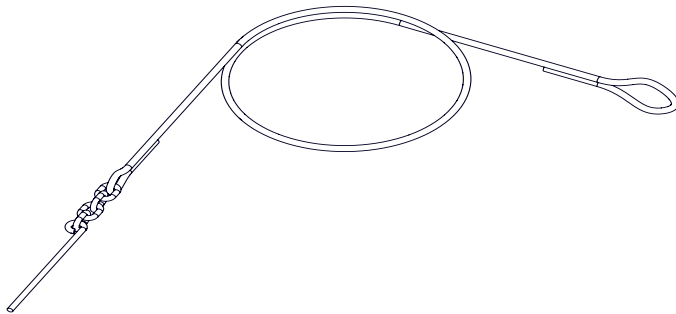
Accessories



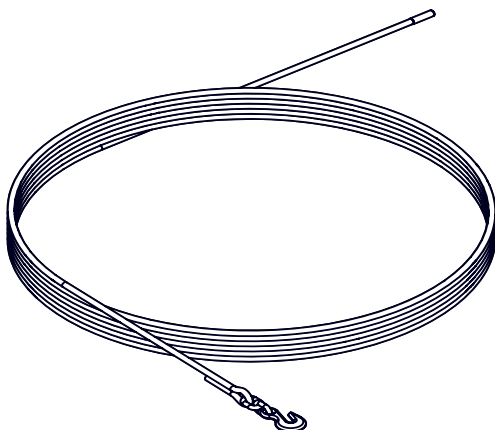
#5089A100 SELF RELEASING SNATCH BLOCK



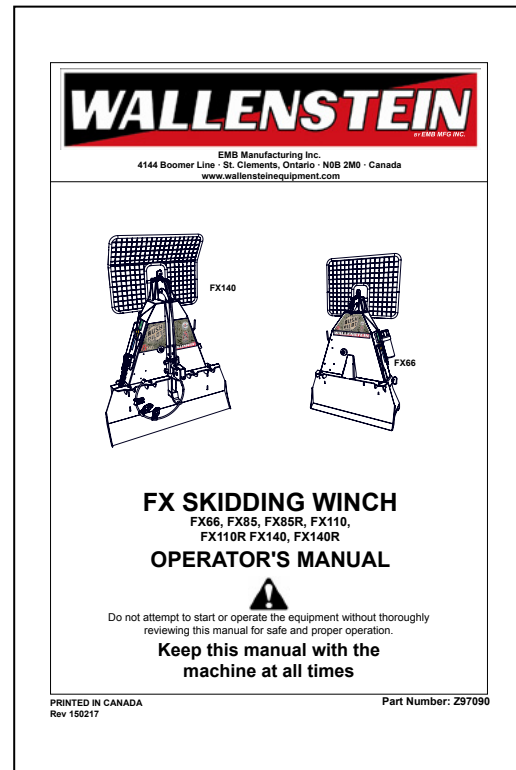
#Z99003 LOGGING TONGS



#Z92125 5 FT SYNTHETIC CHOKER WITH ROD CHAIN END
#Z92126 7 FT SYNTHETIC CHOKER WITH ROD CHAIN END



#Z92123 200 FT 7/16" SYNTHETIC MAINLINE WITH HOOK



#Z97090 OPERATORS MANUAL
Available as a download at
www.embmfg.com