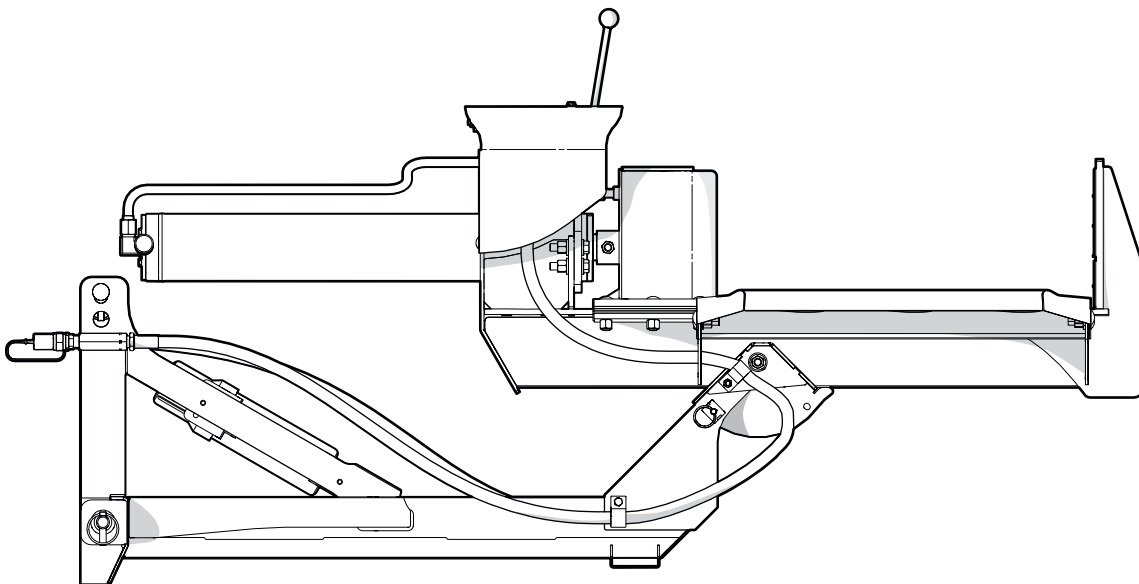


PARTS MANUAL

Serial number 1103258 and up

WX20V Log Splitter



Revision A - Nov-2024

Document number: 2020T500

WALLENSTEIN

Table of Contents

Introduction3
Model and Serial Number Location.....3
Main Parts.....4
Log Splitter Assembly5
Three-Point Hitch Assembly6
Hydraulic Circuit.....7
Z56209 Valve Components8
Label Locations9
Accessories10
Bolt Torque11
Hydraulic Fitting Torque.....12

Introduction

! WARNING!

For safety, operation, and maintenance information, see the Operator’s Manual for your product.

Only qualified people are approved to maintain the machine.

! WARNING!

Replace all safety labels that are missing, damaged, or illegible. If a component is replaced and it has a safety label on it, apply a safety label to the new component. If a person operates a machine with missing, damaged, or illegible safety labels it puts them at risk of serious injury or death.

W100

This document provides information about the original equipment manufacturer (OEM) components (parts). Always replace a part with the correct OEM part. For service, support, or to order parts, contact your local Wallenstein Equipment dealer or distributor.

Always provide the model and serial number of your Wallenstein product when you order parts, or request service or other information. The model and serial number location is shown in the following illustration.

Record the model and serial number of your product here:

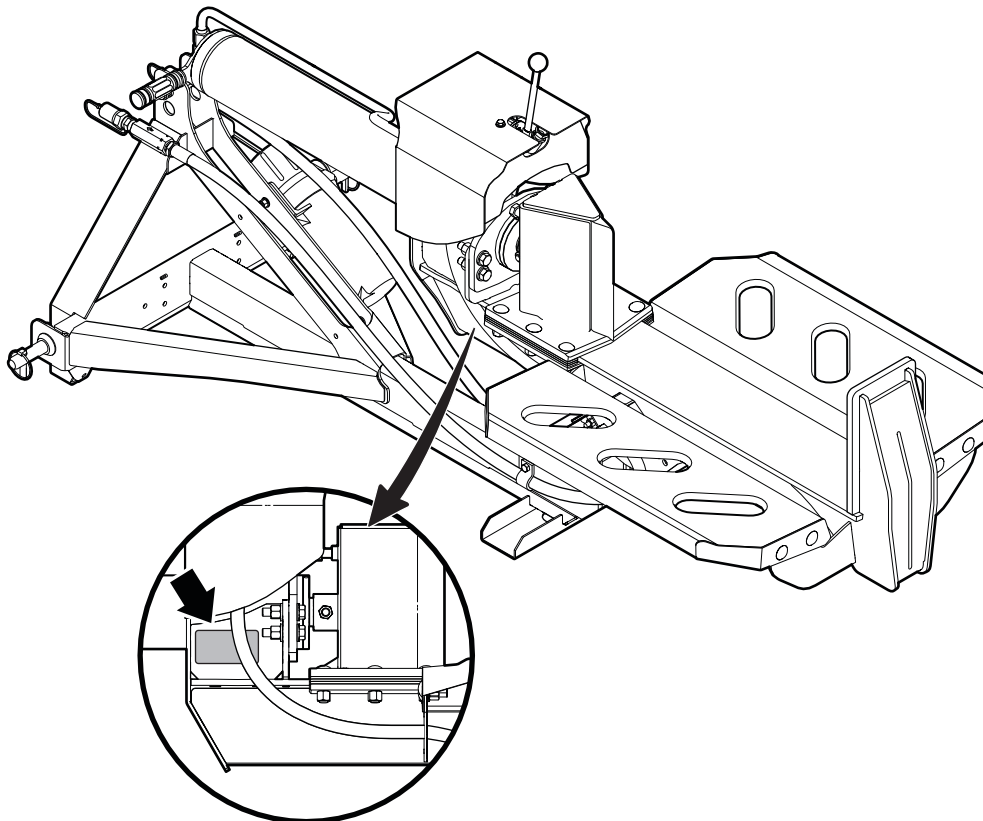
Model	
Serial Number	

The information contained in this document was current at the revision date noted on the bottom of each page. Wallenstein Equipment reserves the right to change product specifications at any time without notice. If your product specifications are different from the information in this document, contact your local dealer or distributor. To find a local dealer or distributor, go to WallensteinEquipment.com and select **Dealer Locator** at the bottom of the page.

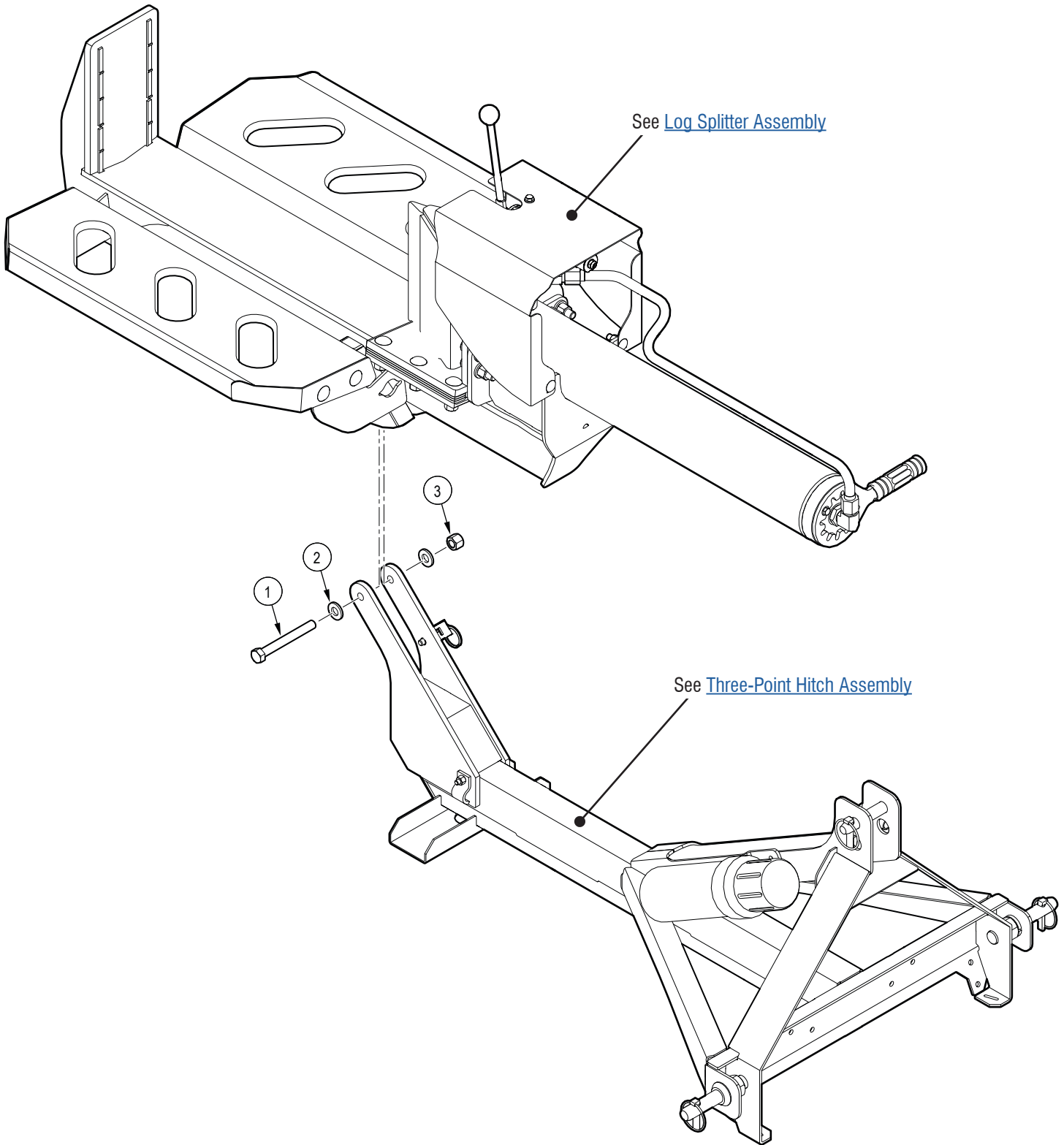
Wallenstein Equipment Inc. • © 2024. All rights reserved.

No part of this work may be copied, reproduced, replaced, distributed, published, displayed, modified, or transferred in any form or by any means except with the prior permission of Wallenstein Equipment Inc.

Model and Serial Number Location

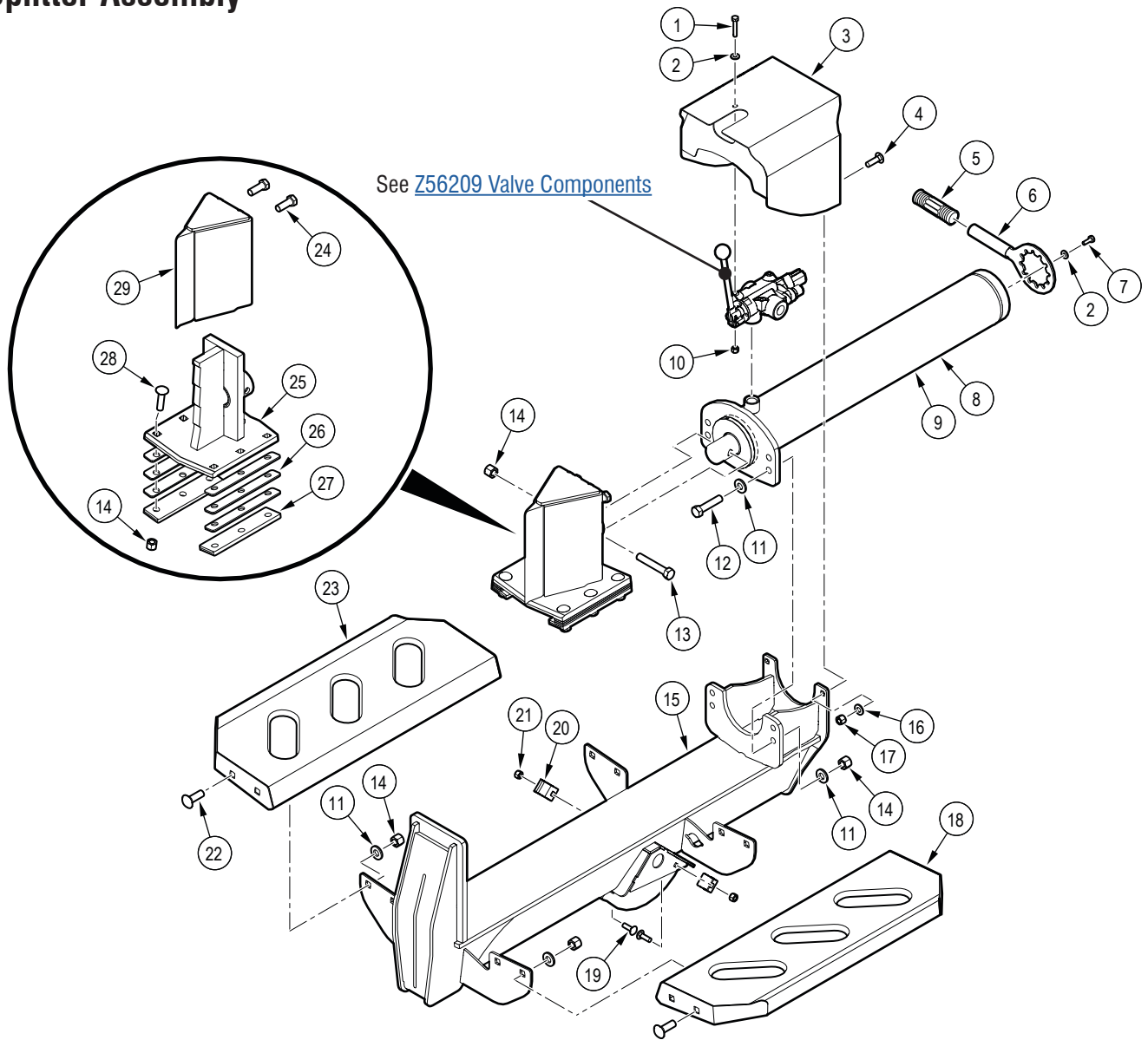


Main Parts



Item	Part number	Description	Quantity
1	Z71542	Hex Bolt 1/2" NC x 4-1/4"	1
2	Z73151G8	SAE Washer 1/2" Grade 8	2
3	Z72251	Hex Lock Nut 1/2" NC	1

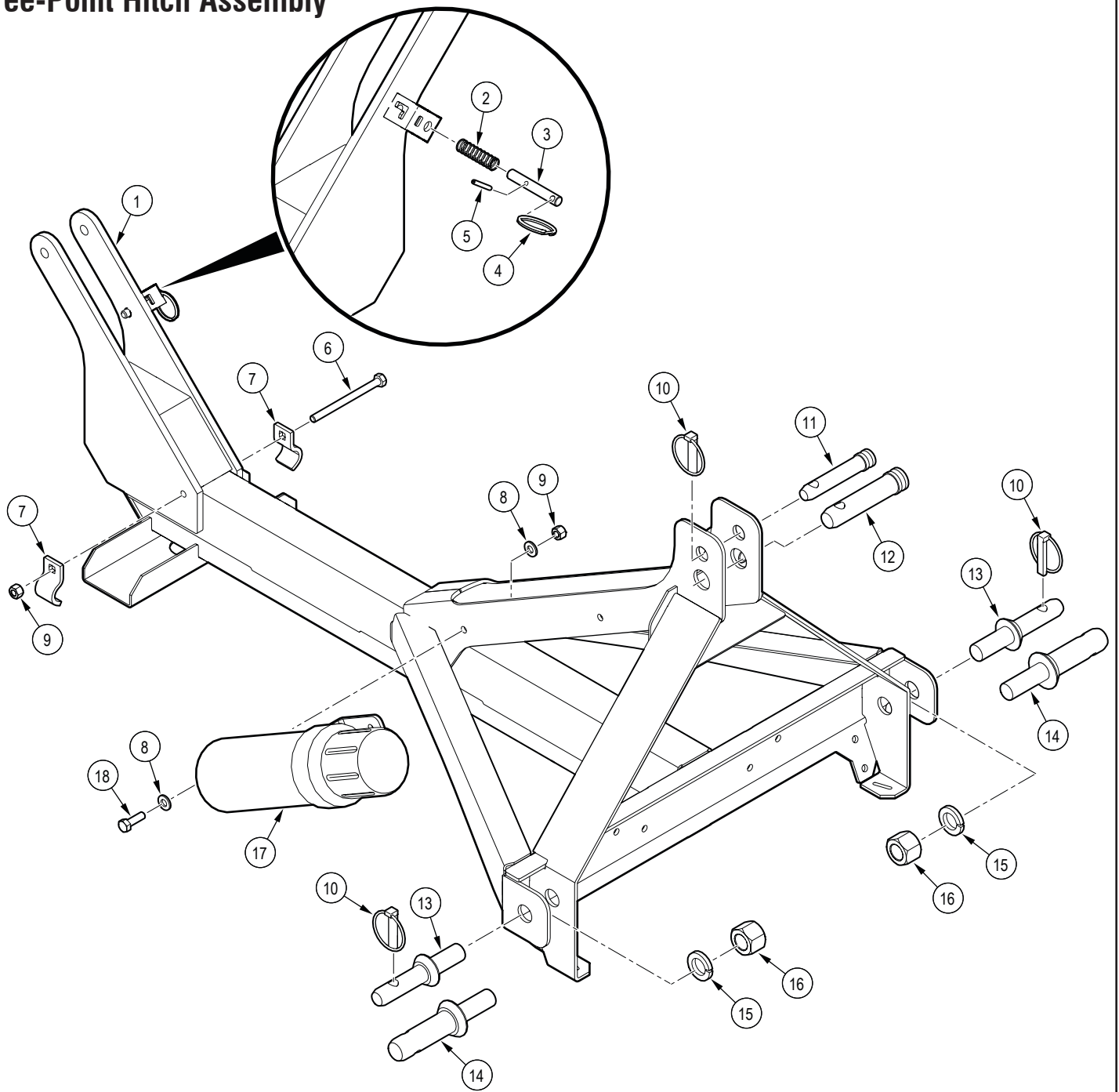
Log Splitter Assembly



Item	Part number	Description	Quantity
1	Z71115	Hex Bolt 1/4" NC x 1-1/2"	1
2	Z73111G8	SAE Washer 1/4" Grade 8	3
3	2074W616	Valve Guard	1
4	Z76232	Carriage Bolt 3/8" NC x 1-1/4"	2
5	Z19321	Handle Grip 1"	1
6	2074W613	Handle	1
7	Z71107	Hex Bolt 1/4" NC x 3/4"	2
8	2074C601	Cylinder 4" x 24" x 1-3/4"	1
9	SLK-4017	Cylinder Seal Kit (not shown)	1
10	Z72211	Hex Lock Nut 1/4" NC	1
11	Z73151G8	SAE Washer 1/2" Grade 8	16
12	Z71522	Hex Bolt 1/2" x 2-1/4"	4
13	Z71530	Hex Bolt 1/2" NC x 3"	1
14	Z72251	Hex Lock Nut 1/2" NC	19
15	2074W602	Split Bed	1

Item	Part number	Description	Quantity
16	Z73131G8	SAE Washer 3/8" Grade 8	2
17	Z72231	Hex Lock Nut 3/8" NC	2
18	2074W017	Log Shelf	1
19	Z76225	Carriage Bolt 5/16" NC x 1"	2
20	6011L128	Hose Clamp 1" x 3/8"	2
21	Z72221	Hex Lock Nut 5/16" NC	2
22	Z76251	Carriage Bolt 1/2" NC x 1-1/2"	8
23	2074W018	Log Shelf	1
24	Z71992G8	Hex Bolt 9/16" NF x 1-1/2" G8	2
25	2074W609	Wedge Base	1
26	2074L726	Spacer 0.150"	6
27	2074L724	Linear Bearing 3/8"	2
28	Z76255	Carriage Bolt 1/2" NC x 2"	6
29	2074W610	Two-Way Wedge	1

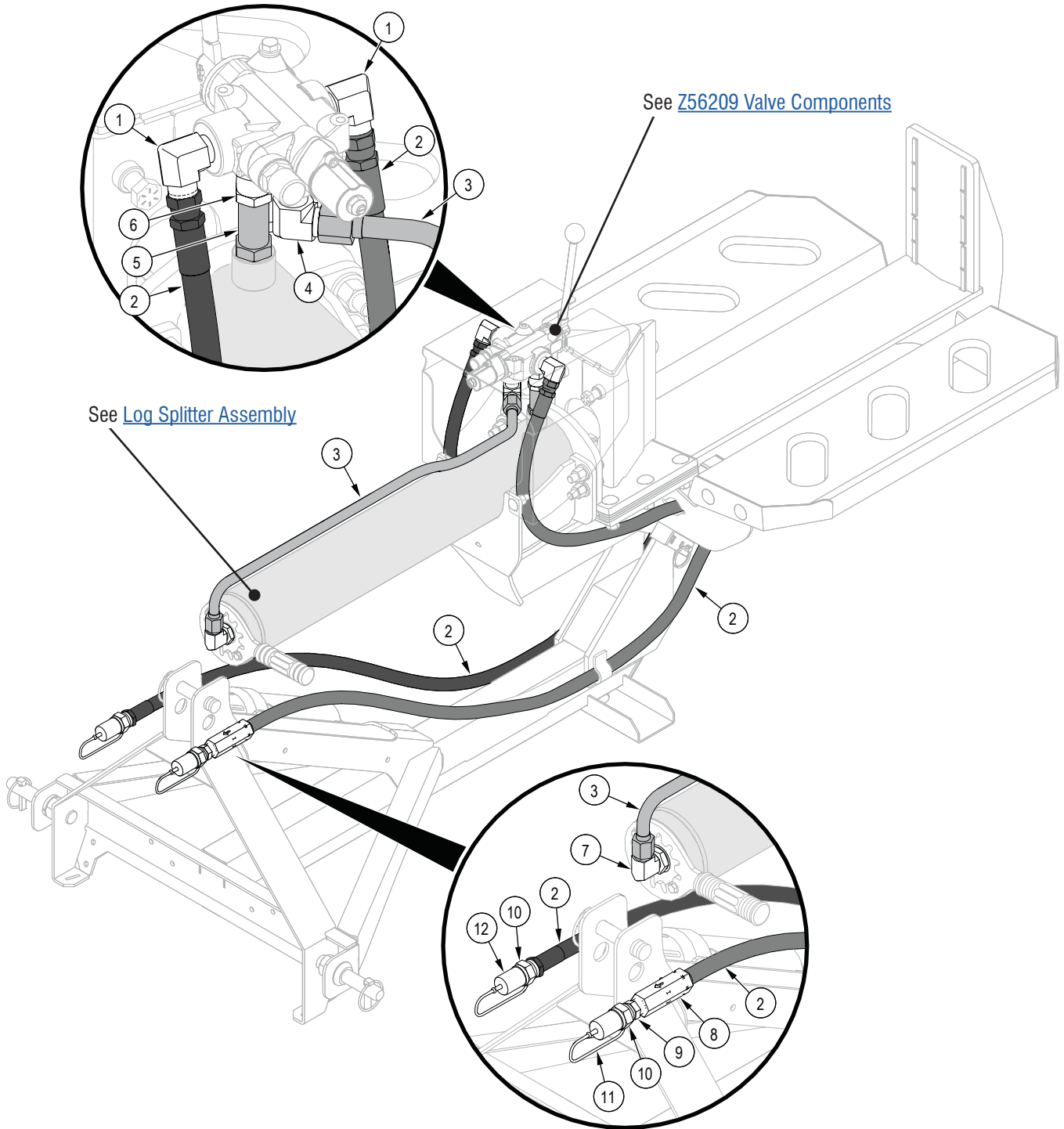
Three-Point Hitch Assembly



Item	Part number	Description	Quantity
1	2020W512	Three-Point Hitch Frame	1
2	Z32202	Compression Spring 0.48" OD x 1.75" x 0.045"	1
3	2074M204	Latch Pin	1
4	Z19924	Zinc-Plated Steel Split Ring 1-1/2" OD, 1-1/4" ID, 3/16" Thick	1
5	Z14141	Roll Pin 5/32" x 1-1/8"	1
6	Z71240	Hex Bolt 5/16" NC x 4"	1
7	6011L128	Hose Clamp 1" x 3/8"	2
8	Z73122G8	SAE Washer 5/16" Grade 8	4
9	Z72221	Hex Lock Nut 5/16" NC	3

Item	Part number	Description	Quantity
10	Z12140	Linchpin 7/16"	3
11	Z11121	Toplink Pin 3/4" x 2-3/4"	1
12	Z11141	Toplink Pin 1" x 3-3/16"	1
13	Z11431	Hitch Pin 7/8" x 1-3/4" x 7/8" NF (Cat 1)	2
14	Z11442	Hitch Pin 1-1/8" x 2-1/4" x 7/8" NF (Cat 2)	2
15	Z73381	Spring Washer 7/8"	2
16	Z72282	Hex Lock Nut 7/8" NF	2
17	Z96503	Document Tube 3-1/2" Short	1
18	Z71210	Hex Bolt 5/16" NC x 1"	2

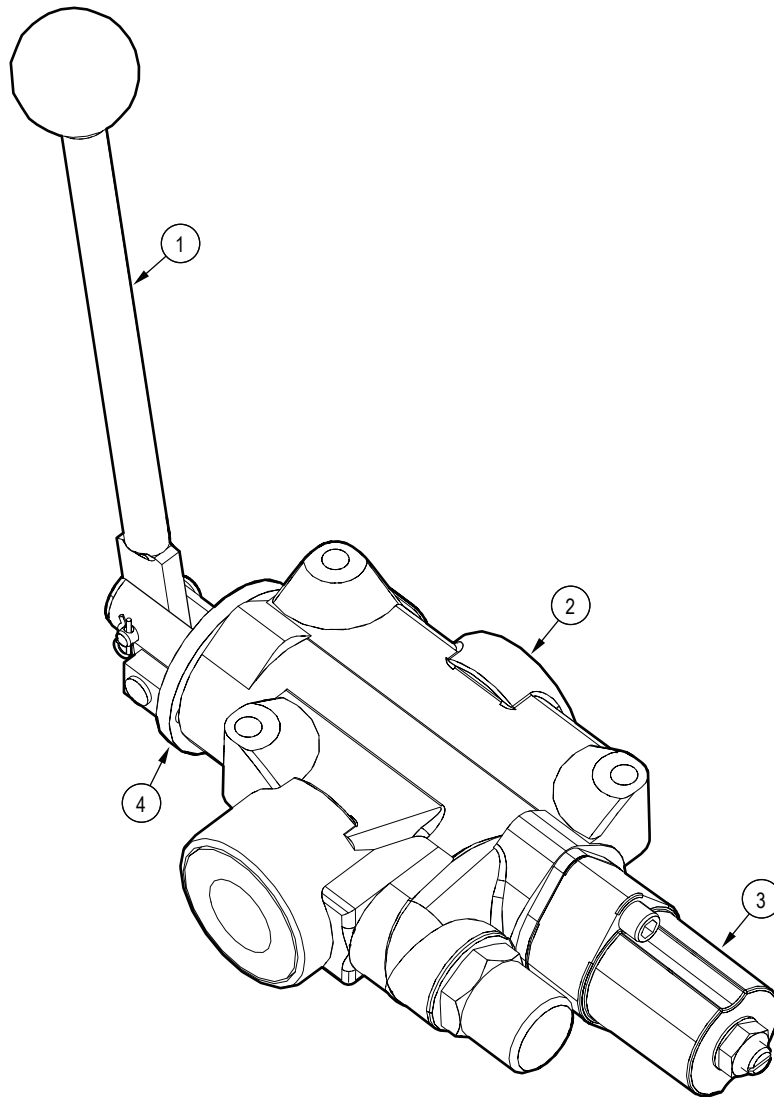
Hydraulic Circuit



Item	Part number	Description	Quantity
1	Z51451	Elbow 90 degrees MJIC x MP 0808	2
2	2020F501	1/2" Hose MP08 x FJICX08 x 116"	2
3	2074F608	Tube 5/8" FJICX10 x FJICX10	1
4	Z514503	Elbow 90 degrees MJIC x MP 1008	1
5	Z516424	Straight MJIC x MORB 1010 Long	1
6	Z51516	Straight MP x FJICX 0810	1
7	Z516509	Elbow 90 degrees MJIC x MORB 1012	1

Item	Part number	Description	Quantity
8	Z56102	Check Valve FP08 x OPSI	1
9	Z51122	Straight MP x MP 0808	1
10	Z51926	Quick Coupler FP08 x M ISO 5675 IRV	2
11	Z52832	Cap ISO 7241-1 x Black	1
12	Z52831	Cap ISO 7241-1 x Red	1

Z56209 Valve Components

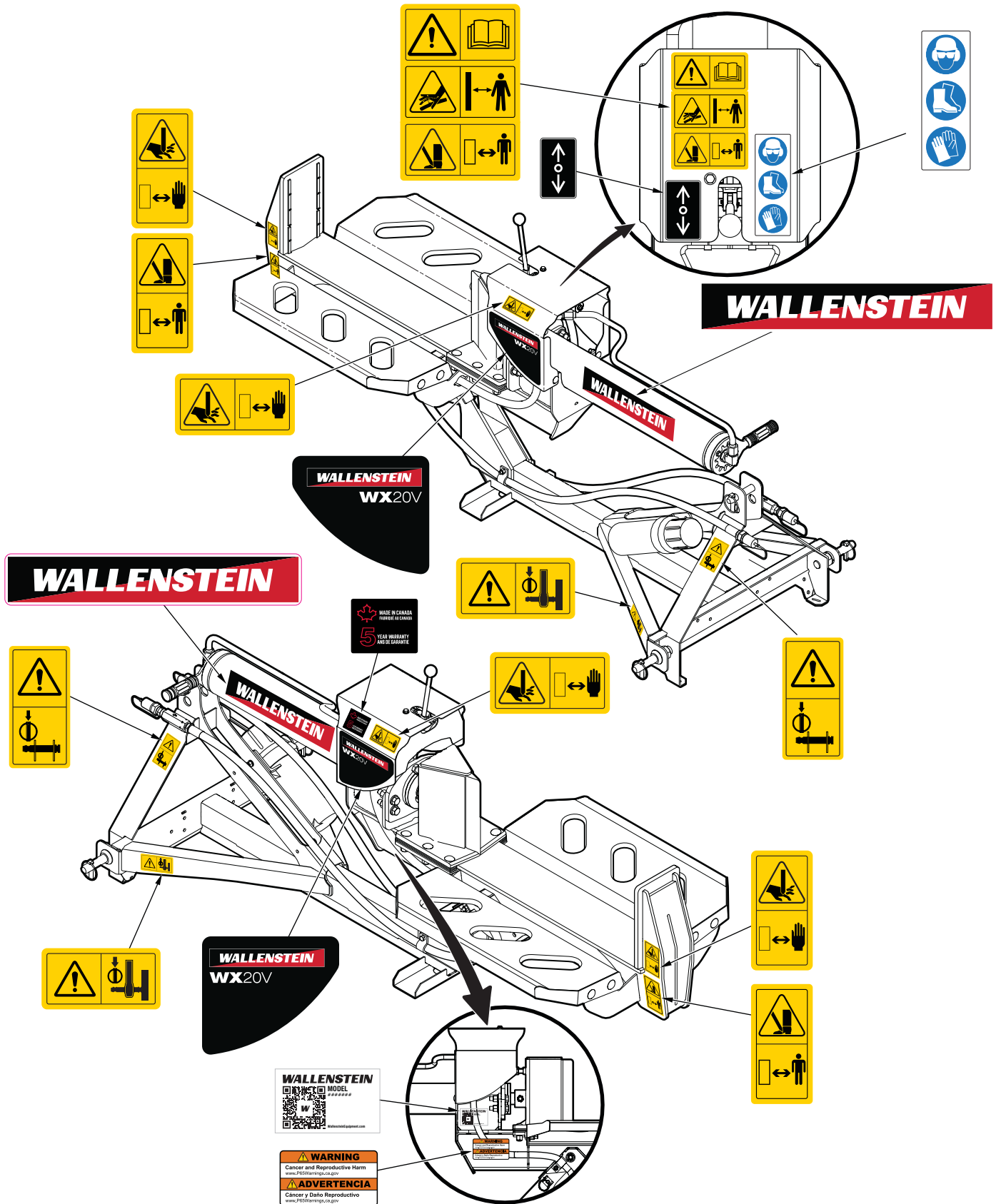


Item	Part number	Description	Quantity
1	SDC-HJ	Handle kit	1
2	LSJRS-K	General seal kit	1
3	LS-RK	Kick-out assembly with spool	1
4	P2322	Clevis bracket	1

Label Locations

IMPORTANT! If you replace a part that has a safety label on it, you must apply a new safety label. Immediately replace safety labels that are damaged, have been removed, or are illegible.

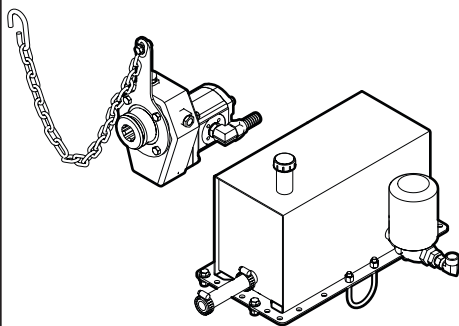
Contact your local Wallenstein Equipment dealer or distributor to order a safety label kit. Labels are not sold individually.



Accessories

For price and availability, contact your local Wallenstein dealer or go to WallensteinEquipment.com.

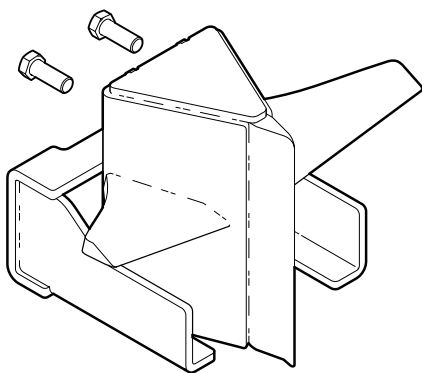
For accessory installation instructions, go to WallensteinEquipment.com. On the **Menu** select **Support**, and then select **Accessories**.



PTO pump kit W4181

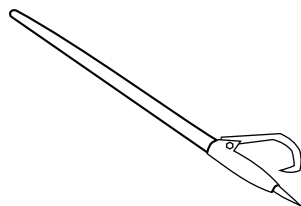
A power take-off (PTO) pump is necessary if your tractor does not have a remote hydraulic connection or has limited hydraulic capability and cannot provide hydraulic fluid flow of 11 gpm.

The PTO pump kit includes a hydraulic pump that connects to the PTO shaft, a hydraulic fluid tank with return hose, hydraulic fittings, and fasteners.



Four-way wedge with log stripper W4302

Split logs into four pieces with a single stroke.



48" log peavy Z99001

Use a log peavy to move logs and prevent injury to your hands.



All weather log splitter cover W4204

Heavy duty industrial material, made in Canada. Protects your log splitter from harsh elements.

Bolt Torque

IMPORTANT! If you replace hardware, use fasteners of the same grade.

IMPORTANT! The torque specifications in these tables are for non-greased or non-oiled threads. Do not grease or oil fastener threads unless otherwise indicated. When using a thread lock, increase the specified torque 5%.



Bolt grades are identified by the marks on the bolt head.

The bolt torque specification tables provide the correct torque settings for common bolts and capscrews. Tighten all bolts to the torque that is specified in the table, unless otherwise indicated. Check the bolt tightness periodically.

Imperial Bolt Torque Specifications

Bolt Diameter	Torque					
	SAE Gr. 2		SAE Gr. 5		SAE Gr. 8	
	lbf•ft	N•m	lbf•ft	N•m	lbf•ft	N•m
1/4 inch	6	8	9	12	12	17
5/16 inch	10	13	19	25	27	36
3/8 inch	20	27	33	45	45	63
7/16 inch	30	41	53	72	75	100
1/2 inch	45	61	80	110	115	155
9/16 inch	60	95	115	155	165	220
5/8 inch	95	128	160	215	220	305
3/4 inch	165	225	290	390	400	540
7/8 inch	170	230	420	570	650	880



SAE Gr. 2



SAE Gr. 5



SAE Gr. 8

Metric Bolt Torque Specifications

Bolt Diameter	Torque			
	Gr. 8.8		Gr. 10.9	
	lbf•ft	N•m	lbf•ft	N•m
M3	0.4	0.5	1.3	1.8
M4	2.2	3	3.3	4.5
M6	7	10	11	15
M8	18	25	26	35
M10	37	50	52	70
M12	66	90	92	125
M14	83	112	116	158
M16	166	225	229	310
M20	321	435	450	610
M30	1,103	1,495	1,550	2,100



8.8



10.9

Hydraulic Fitting Torque

Tighten flare-type tube fittings:

1. Check the flare and flare seat for defects that might cause leaks.
2. Align the tube with the fitting before tightening.
3. Hand-tighten the swivel nut until it is snug.
4. To prevent the tube from twisting, use two wrenches. Place one wrench on the connector body and tighten the swivel nut with the second wrench. Torque the fitting to the correct specification.

If a torque wrench is not available, use the flats from finger tight (FFFT) method.

Hydraulic Fitting Torque Specifications					
Tube size OD	Hex size across flats	Torque		Flats from finger tight	
		Inches	Inches	lbf•ft	N•m
3/16	7/16	6	8	2	1/6
1/4	9/16	11–12	15–17	2	1/6
5/16	5/8	14–16	19–22	2	1/6
3/8	11/16	20–22	27–30	1-1/4	1/6
1/2	7/8	44–48	59–65	1	1/6
5/8	1	50–58	68–79	1	1/6
3/4	1-1/4	79–88	107–119	1	1/8
1	1-5/8	117–125	158–170	1	1/8

Specifications are for non-lubricated connections.



A series of horizontal lines filling the majority of the page, intended for handwritten notes or calculations.



MAKING WORK FEEL MORE LIKE PLAY™

WallensteinEquipment.com

