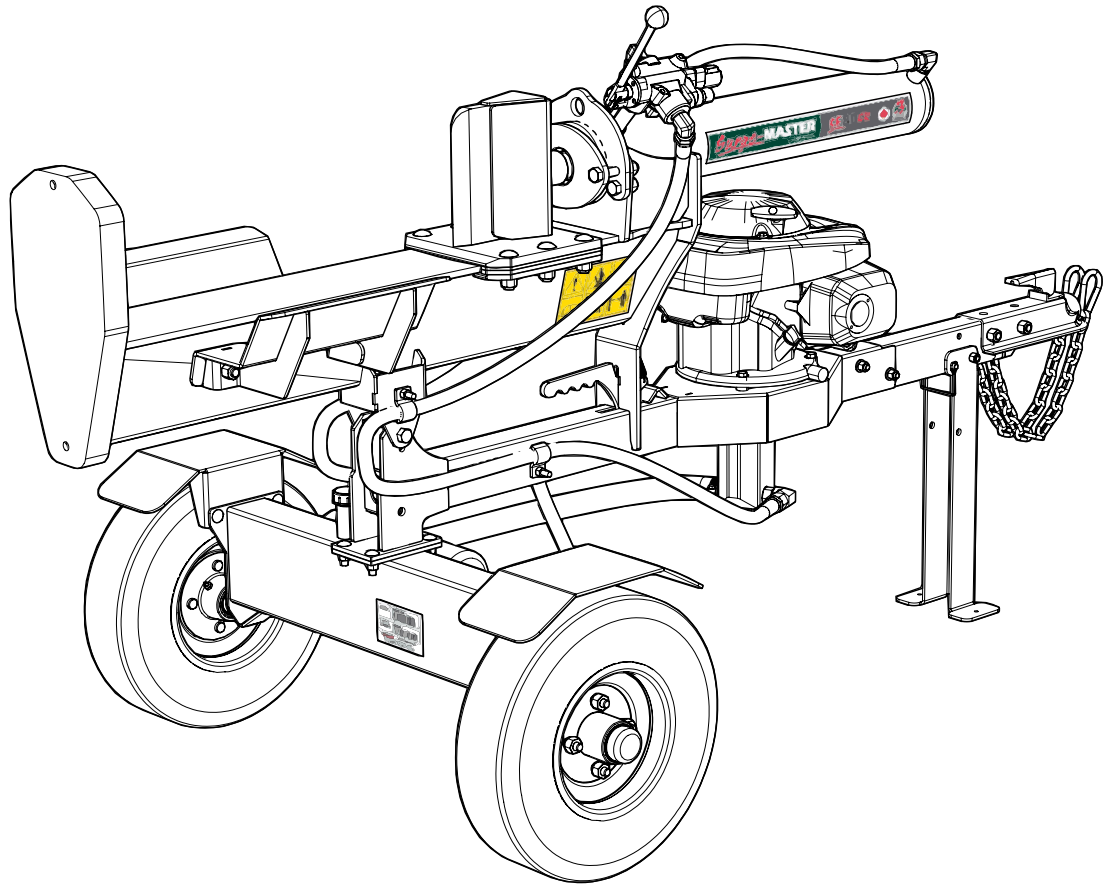




EMB Manufacturing Inc.
4144 Boomer Line · St. Clements, On · N0B 2M0 · Canada
Ph: (519) 699-9283 · Fax: (519) 699-4146
www.embmfg.com

SE80CR Trailer Log Splitter Parts Manual

S/N ##### & After



Refer to the operators
manual for safe
operation and
maintenance

Rev A2 140414

For threaded parts installation, refer to the torque charts in this manual.

Foreword

EMB Mfg. has prepared this parts manual to assist customers in ordering quality OEM replacement parts.

Proper and regular service and replacing old, worn or broken parts with the correct Wallenstein parts are essential to prolonging the life of your Wallenstein product. Please refer to this manual before ordering any replacement parts.

All information contained in this parts manual is based on the latest product specification available at the time of printing this manual. If your product differs from the specifications contained within this manual contact EMB Mfg. for information.

EMB reserves the right to alter specifications on their products at any time.

Reproduction of this parts manual of any kind is prohibited without prior written permission from EMB Mfg.

For parts and information please contact your dealer. If your dealer is no longer available please go to our website: <http://www.embmfg.com> and click on "FIND A DEALER NEAR YOU" for information on a local dealer.

Table of Contents

Bolt Torque.....	4
Hydraulic Fitting Torque	5
Wheel Lug Torque	5
Hitch Assembly	6
Main Assembly	7
Splitter Bed Assembly.....	8
Trailer Assembly.....	9
Hub Assembly.....	10
Valve Assembly.....	10
Valve Seal Kit	11
Cylinder Detail	11
Hydraulic Hose List	12
Hydraulic Schematic	12
Label Layout.....	13
Accessories.....	14

Bolt Torque

CHECKING BOLT TORQUE

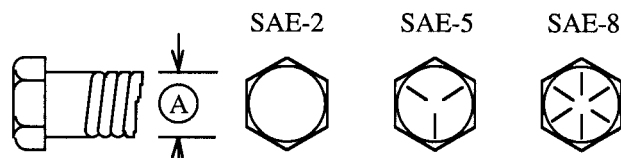
The tables shown below give correct torque values for various bolts and capscrews. Tighten all bolts to the torques specified in chart unless otherwise noted. Check tightness of bolts periodically, using bolt torque chart as a guide. Replace hardware with the same strength bolt.

Torque figures indicated above are valid for non-greased or non-oiled threads and heads unless otherwise specified. Therefore, do not grease or oil bolts or capscrews unless otherwise specified in this manual. When using locking elements, increase torque values by 5%.

* Torque value for bolts and capscrews are identified by their head markings.

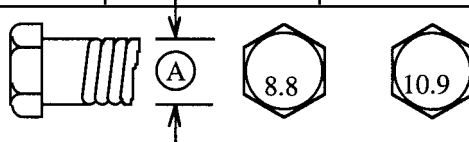
ENGLISH TORQUE SPECIFICATIONS

Bolt Diameter "A"	Bolt Torque*					
	SAE 2 (N.m) (lb-ft)		SAE 5 (N.m) (lb-ft)		SAE 8 (N.m) (lb-ft)	
1/4"	8	6	12	9	17	12
5/16"	13	10	25	19	36	27
3/8"	27	20	45	33	63	45
7/16"	41	30	72	53	100	75
1/2"	61	45	110	80	155	115
9/16"	95	60	155	115	220	165
5/8"	128	95	215	160	305	220
3/4"	225	165	390	290	540	400
7/8"	230	170	570	420	880	650
1"	345	225	850	630	1320	970



METRIC TORQUE SPECIFICATIONS

Bolt Diameter "A"	Bolt Torque*			
	8.8 (N.m) (lb-ft)		10.9 (N.m) (lb-ft)	
M3	.5	.4	1.8	1.3
M4	3	2.2	4.5	3.3
M5	6	4	9	7
M6	10	7	15	11
M8	25	18	35	26
M10	50	37	70	52
M12	90	66	125	92
M14	140	103	200	148
M16	225	166	310	229
M20	435	321	610	450
M24	750	553	1050	774
M30	1495	1103	2100	1550
M36	2600	1917	3675	2710



Hydraulic Fitting Torque

Tightening Flare Type Tube Fittings *

1. Check flare and flare seat for defects that might cause leakage.
2. Align tube with fitting before tightening.
3. Lubricate connection and hand tighten swivel nut until snug.
4. To prevent twisting the tube(s), use two wrenches. Place one wrench on the connector body and with the second tighten the swivel nut to the torque shown.

Tube Size OD (in.)	Nut Size Across Flats (in.)	Torque Value*		Recommended Turns To Tighten (After Finger Tightening)	
		(N.m)	(lb-ft)	(Flats)	(Turn)
3/16	7/16	8	6	1	1/6
1/4	9/16	12	9	1	1/6
5/16	5/8	16	12	1	1/6
3/8	11/16	24	18	1	1/6
1/2	7/8	46	34	1	1/6
5/8	1	62	46	1	1/6
3/4	1-1/4	102	75	3/4	1/8
7/8	1-3/8	122	90	3/4	1/8

The torque values shown are based on lubricated connections as in reassembly.

Wheel Lug Torque

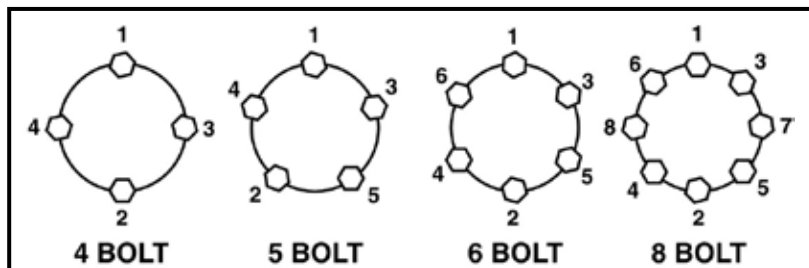
It is extremely important safety procedure to apply and maintain proper wheel mounting torque on your trailer axle. Torque wrenches are the best method to assure the proper amount of torque is being applied to a fastener.

Wheel lugs should be torqued before first road use and after each wheel removal. Check and re torque after the first 16Km (10 miles), 40Km (25 miles), and again at 80Km (50 miles). Check periodically thereafter.

Note: Wheel lugs must be applied and maintained at the proper torque levels to prevent loose wheels, broken studs, and possible dangerous separation of wheels from your axle.

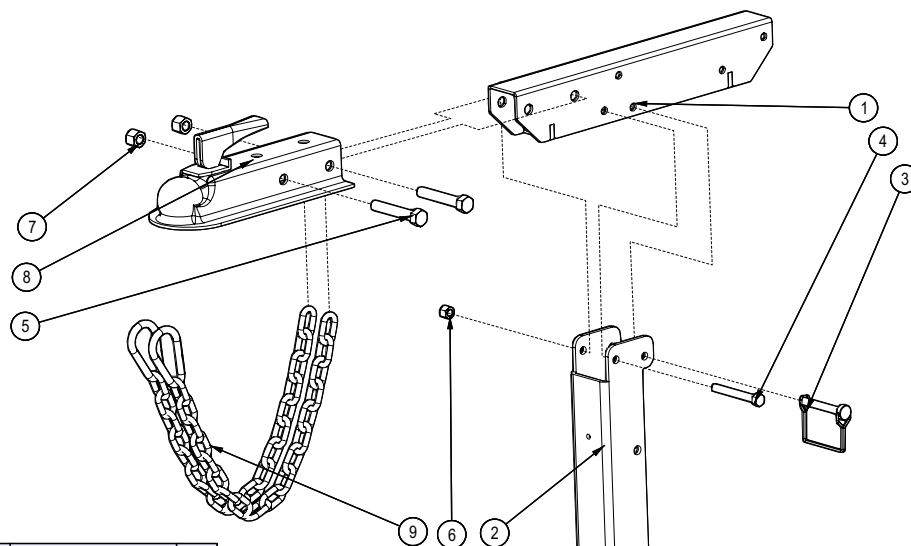
- Start all lugs by hand to prevent cross threading.
- Tighten lugs in sequence, per wheel lug torque sequence chart.
- The tightening of the fasteners should be done in stages. Following the recommended sequence, tighten fasteners per wheel torque requirements chart.

Wheel Size	Torque Unit	1st Stage	2nd Stage	3rd Stage
8"	ft-lbs	12 - 20	30 - 35	45 - 55
	Nm	16 - 26	39 - 45.5	58.5 - 71.5
12"	ft-lbs	20 - 25	35 - 40	50 - 60
	Nm	26 - 32.5	45.5 - 52	65 - 78
13"	ft-lbs	20 - 25	35 - 40	50 - 60
	Nm	26 - 32.5	45.5 - 52	65 - 78
14"	ft-lbs	20 - 25	50 - 60	90 - 120
	Nm	26 - 32.5	65 - 78	117 - 156
15"	ft-lbs	20 - 25	50 - 60	90 - 120
	Nm	26 - 32.5	65 - 78	117 - 156
16"	ft-lbs	20 - 25	50 - 60	90 - 120
	Nm	26 - 32.5	65 - 78	117 - 156



Wheel Lug Torque Sequence

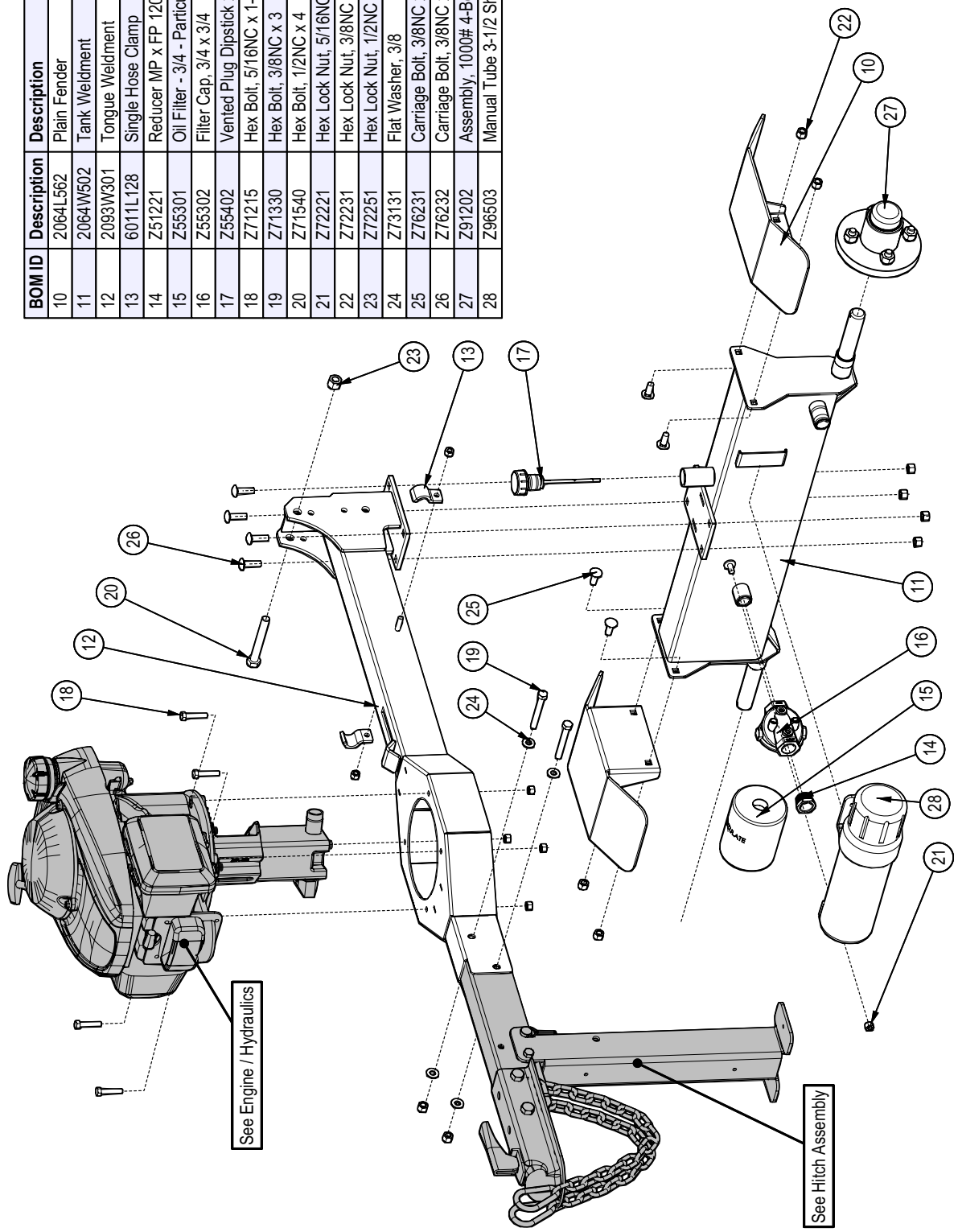
Hitch Assembly



BOM ID	Description	Description	Qty
1	2064W517	Hitch Beam	1
2	2064L575	Leg	1
3	Z12432	Snapper Pin 3/8 x 2-1/2	1
4	Z71330	Hex Bolt, 3/8NC x 3	1
5	Z71530	Hex Bolt, 1/2NC x 3	2
6	Z72231	Hex Lock Nut, 3/8NC	1
7	Z72251	Hex Lock Nut, 1/2NC	2
8	Z91614	2" Hitch Coupler	1
9	Z92303	Safety Chain 1/4 x 2'	2

Main Assembly

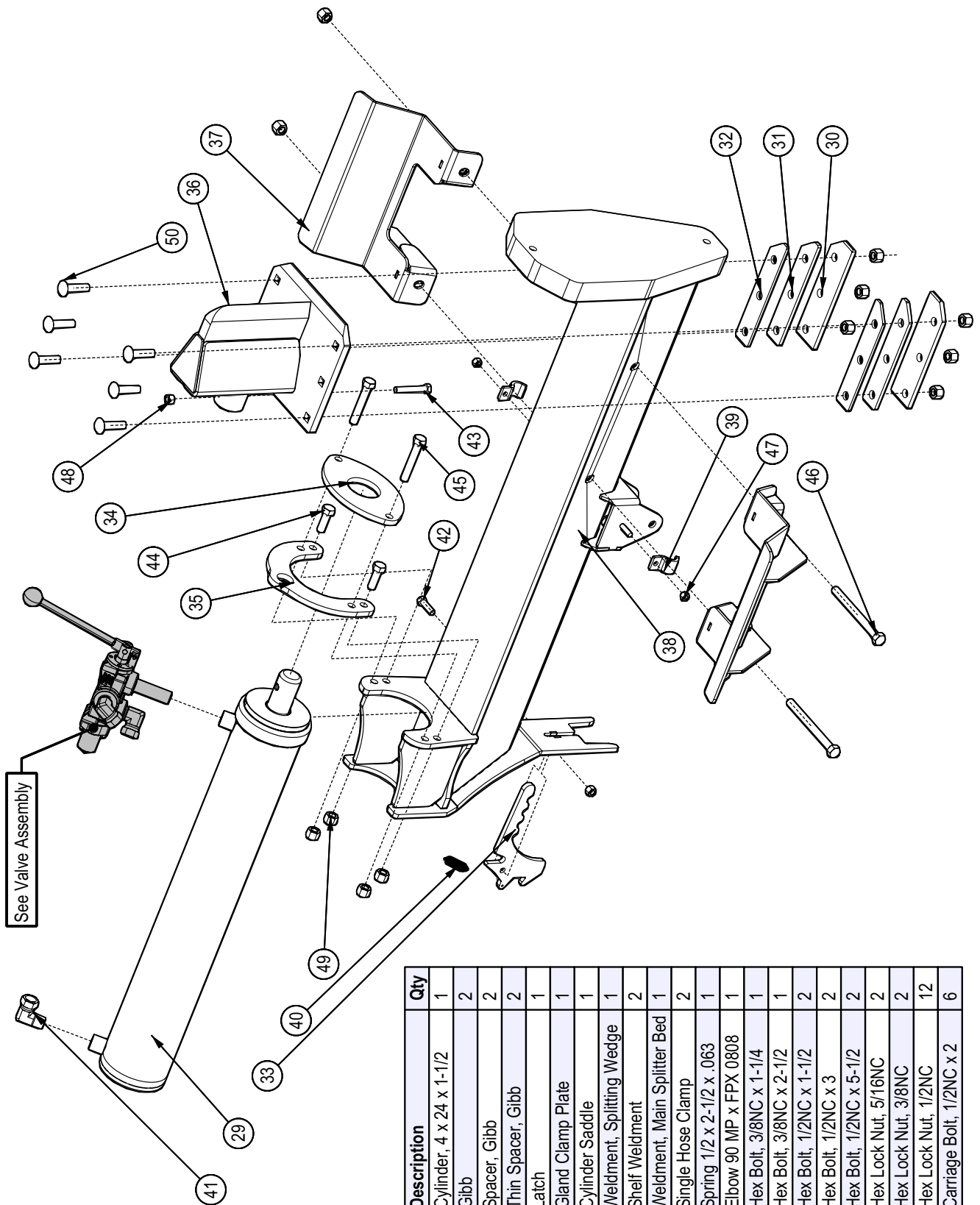
BOM ID	Description	Description	Qty
10	2064L562	Plain Fender	2
11	2064W502	Tank Weldment	1
12	2093W301	Tongue Weldment	1
13	6011L128	Single Hose Clamp	2
14	Z51221	Reducer MP x FP 1208	1
15	Z55301	Oil Filter - 3/4 - Particulate	1
16	Z55302	Filter Cap, 3/4 x 3/4	1
17	Z55402	Vented Plug Dipstick x 5	1
18	Z71215	Hex Bolt, 5/16NC x 1-1/2	4
19	Z71330	Hex Bolt, 3/8NC x 3	2
20	Z71540	Hex Bolt, 1/2NC x 4	1
21	Z7221	Hex Lock Nut, 5/16NC	7
22	Z72231	Hex Lock Nut, 3/8NC	10
23	Z72251	Hex Lock Nut, 1/2NC	1
24	Z73131	Flat Washer, 3/8	4
25	Z76231	Carriage Bolt, 3/8NC x 1	4
26	Z76232	Carriage Bolt, 3/8NC x 1-1/4	4
27	Z91202	Assembly, 1000# 4-Bolt Hub	1
28	Z96503	Manual Tube 3-1/2 Short	1



See Engine / Hydraulics

See Hitch Assembly

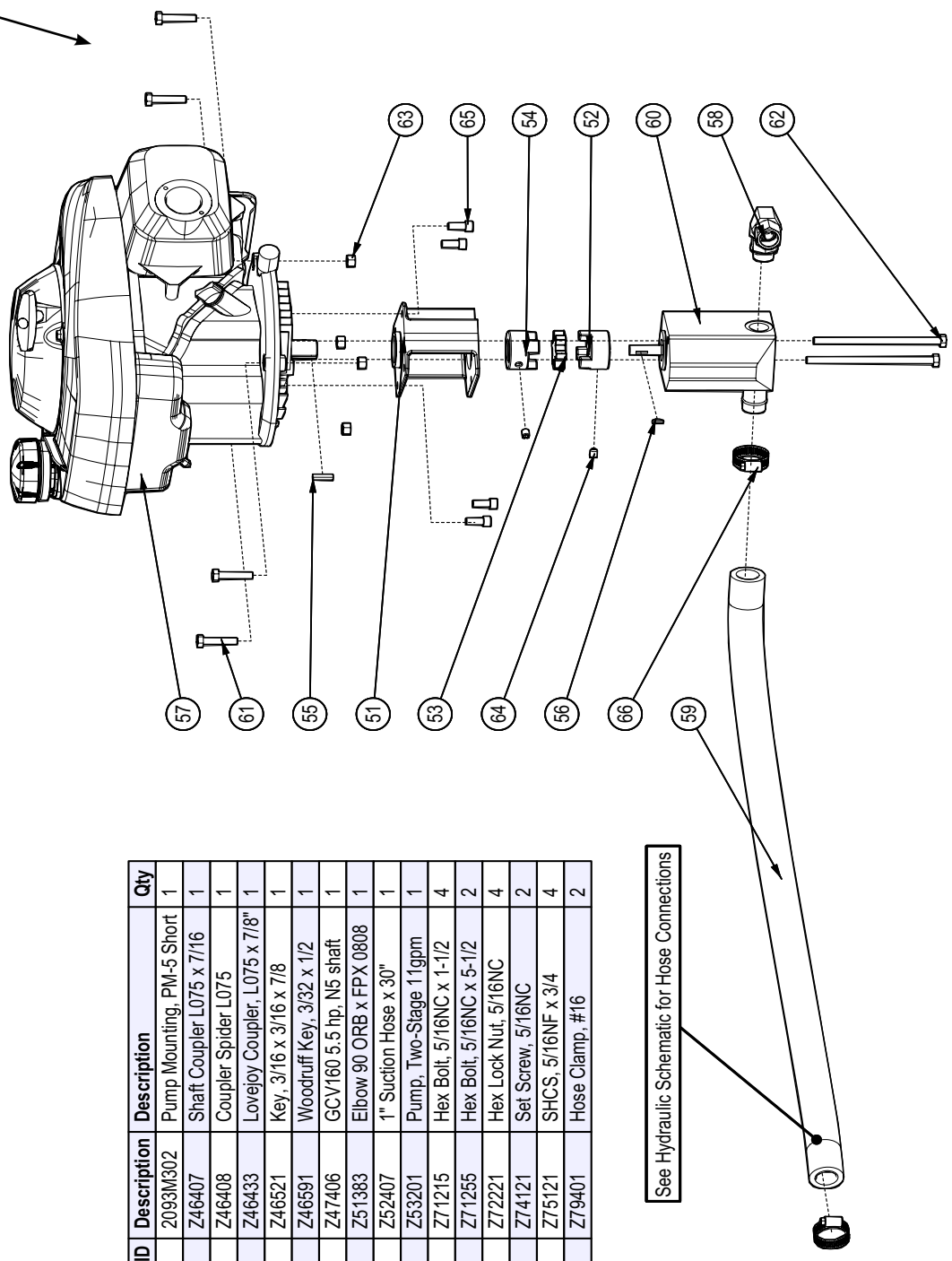
Splitter Bed Assembly



BOM ID	Description	Description	Qty
29	2011C101	Cylinder, 4 x 24 x 1-1/2	1
30	2064L509	Gibb	2
31	2064L511	Spacer, Gibb	2
32	2064L512	Thin Spacer, Gibb	2
33	2064L524	Latch	1
34	2064L563	Gland Clamp Plate	1
35	2064L564	Cylinder Saddle	1
36	2064W503	Weldment, Splitting Wedge	1
37	2064W510	Shelf Weldment	2
38	2064W515	Weldment, Main Splitter Bed	1
39	6011L128	Single Hose Clamp	2
40	Z31304	Spring 1/2 x 2-1/2 x .063	1
41	Z51331	Elbow 90 MP x FPX 0808	1
42	Z71312	Hex Bolt, 3/8NC x 1-1/4	1
43	Z71325	Hex Bolt, 3/8NC x 2-1/2	1
44	Z71515	Hex Bolt, 1/2NC x 1-1/2	2
45	Z71530	Hex Bolt, 1/2NC x 3	2
46	Z71555	Hex Bolt, 1/2NC x 5-1/2	2
47	Z72221	Hex Lock Nut, 5/16NC	2
48	Z72231	Hex Lock Nut, 3/8NC	2
49	Z72251	Hex Lock Nut, 1/2NC	12
50	Z76255	Carriage Bolt, 1/2NC x 2	6

Trailer Assembly

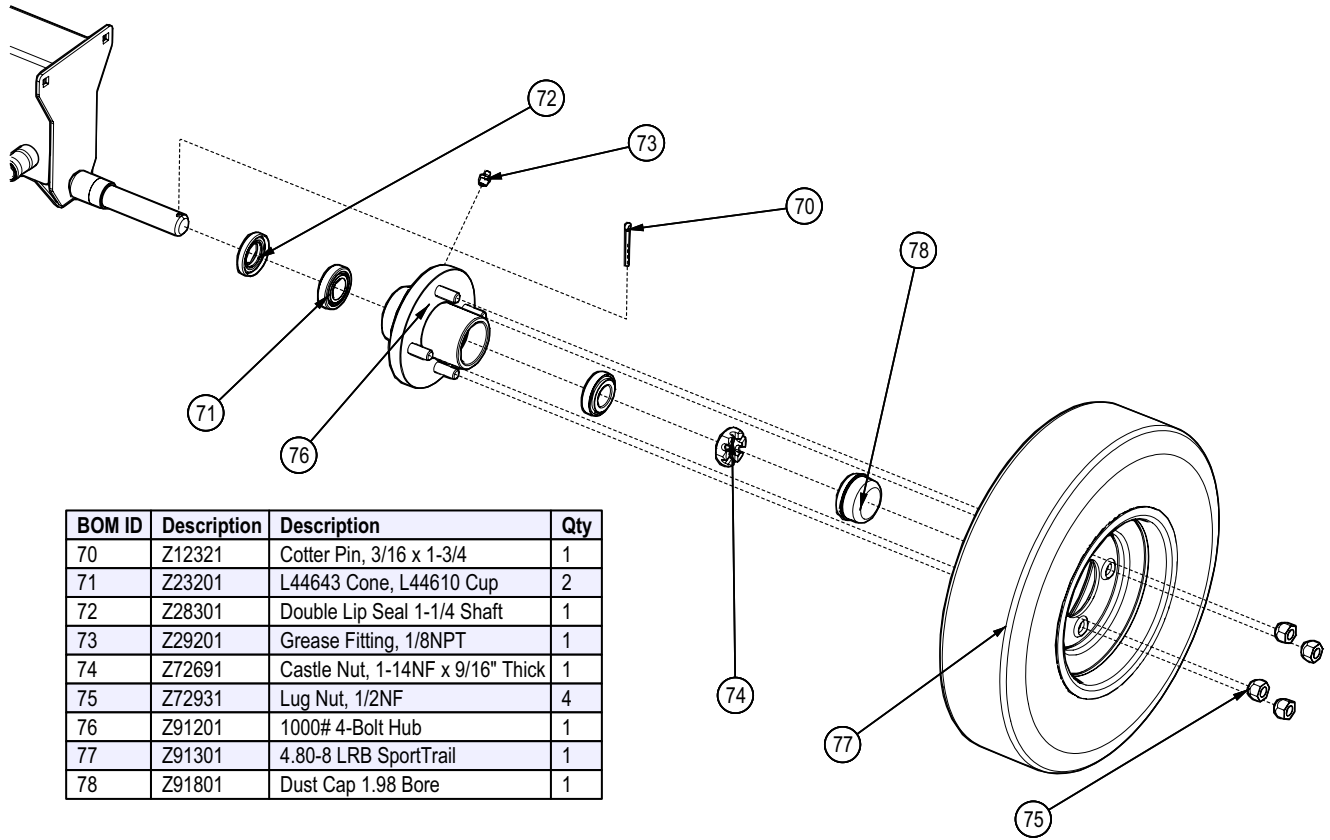
See Hub Ass'y



BOM ID	Description	Description	Qty
51	2093M302	Pump Mounting, PM-5 Short	1
52	Z46407	Shaft Coupler L075 x 7/16	1
53	Z46408	Coupler Spider L075	1
54	Z46433	Lovejoy Coupler, L075 x 7/8"	1
55	Z46521	Key, 3/16 x 3/16 x 7/8	1
56	Z46591	Woodruff Key, 3/32 x 1/2	1
57	Z47406	GCV160 5.5 hp, N5 shaft	1
58	Z51383	Elbow 90 ORB x FPX 0808	1
59	Z52407	1" Suction Hose x 30"	1
60	Z53201	Pump, Two-Stage 11gpm	1
61	Z71215	Hex Bolt, 5/16NC x 1-1/2	4
62	Z71255	Hex Bolt, 5/16NC x 5-1/2	2
63	Z72221	Hex Lock Nut, 5/16NC	4
64	Z74121	Set Screw, 5/16NC	2
65	Z75121	SHCS, 5/16NF x 3/4	4
66	Z79401	Hose Clamp, #16	2

See Hydraulic Schematic for Hose Connections

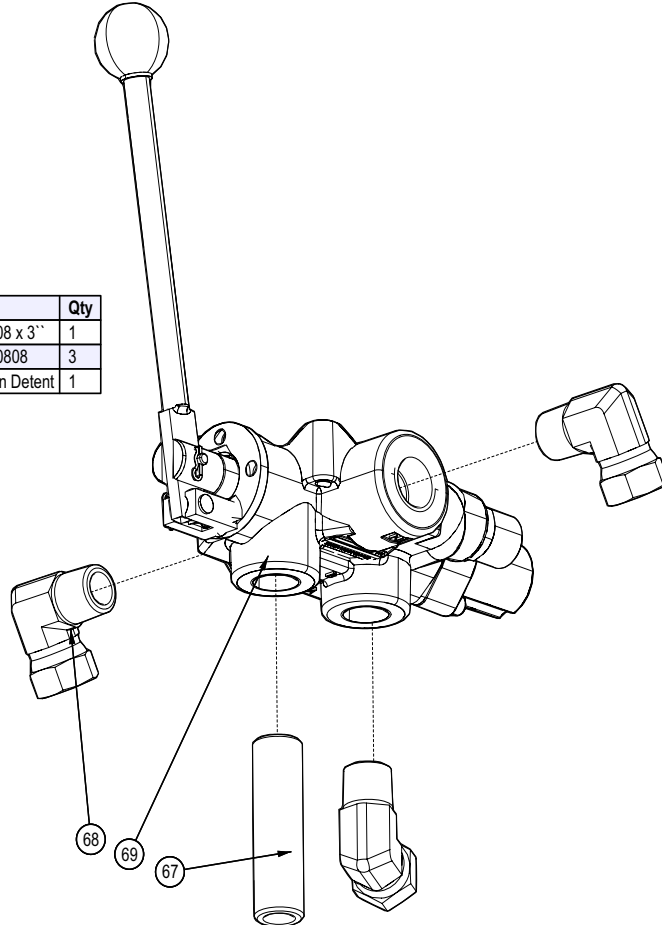
Hub Assembly



BOM ID	Description	Description	Qty
70	Z12321	Cotter Pin, 3/16 x 1-3/4	1
71	Z23201	L44643 Cone, L44610 Cup	2
72	Z28301	Double Lip Seal 1-1/4 Shaft	1
73	Z29201	Grease Fitting, 1/8NPT	1
74	Z72691	Castle Nut, 1-14NF x 9/16" Thick	1
75	Z72931	Lug Nut, 1/2NF	4
76	Z91201	1000# 4-Bolt Hub	1
77	Z91301	4.80-8 LRB SportTrail	1
78	Z91801	Dust Cap 1.98 Bore	1

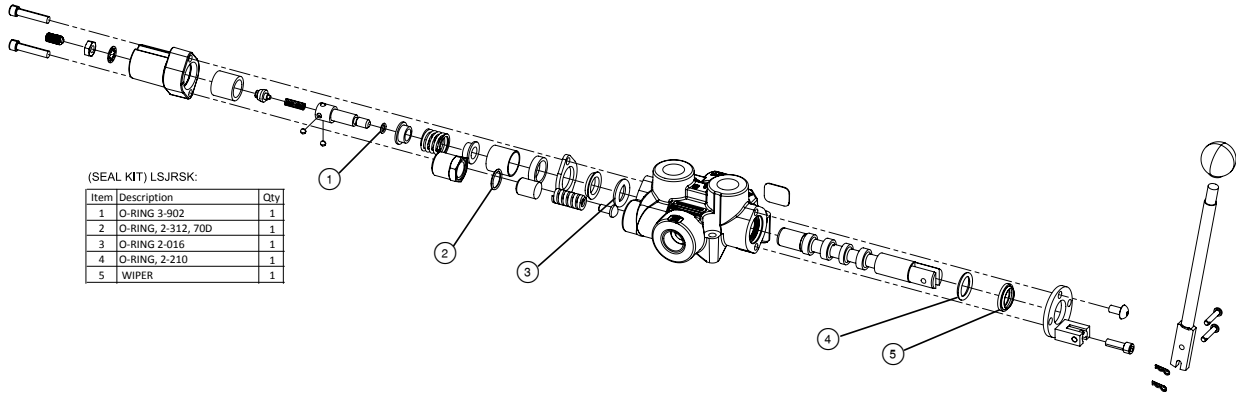
Valve Assembly

BOM ID	Description	Description	Qty
67	Z51113	Straight, MP08 x MP08 x 3"	1
68	Z51331	Elbow 90 MP x FPX 0808	3
69	Z56209	Valve, Single Function Detent	1



Valve Seal Kit

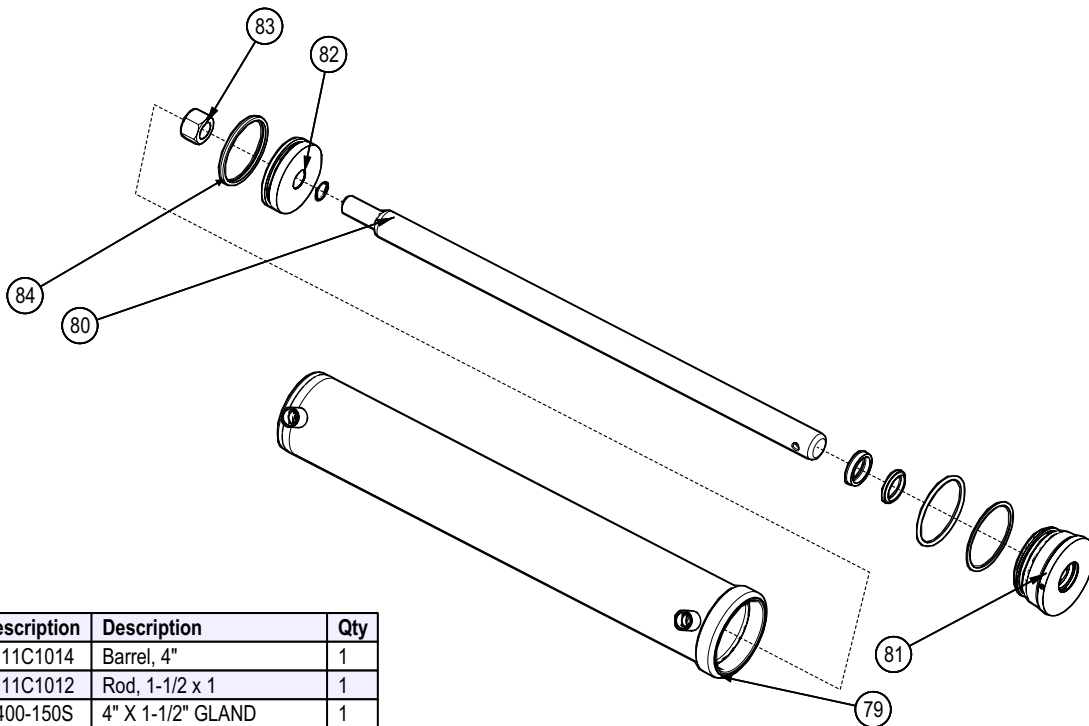
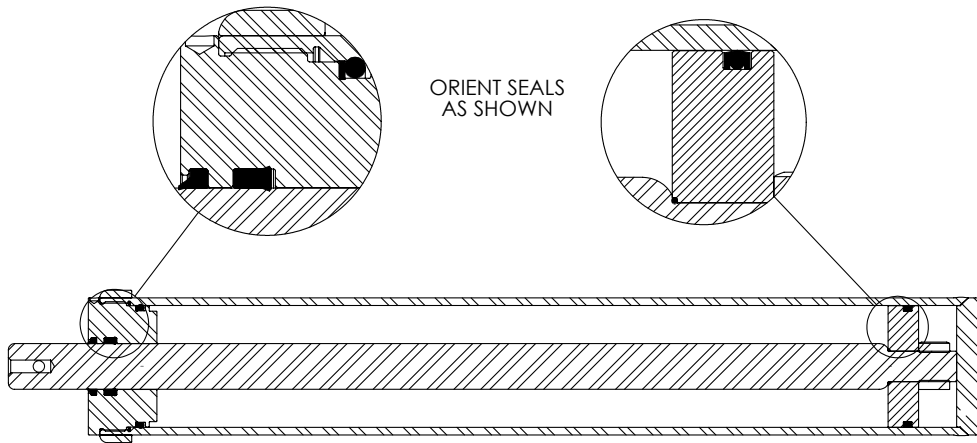
Seal kit for #Z56209 Valve:
#LSJRSK



(SEAL KIT) LSJRSK:

Item	Description	Qty
1	O-RING 3-902	1
2	O-RING 2-312, 70D	1
3	O-RING 2-016	1
4	O-RING 2-210	1
5	WIPER	1

Cylinder Detail

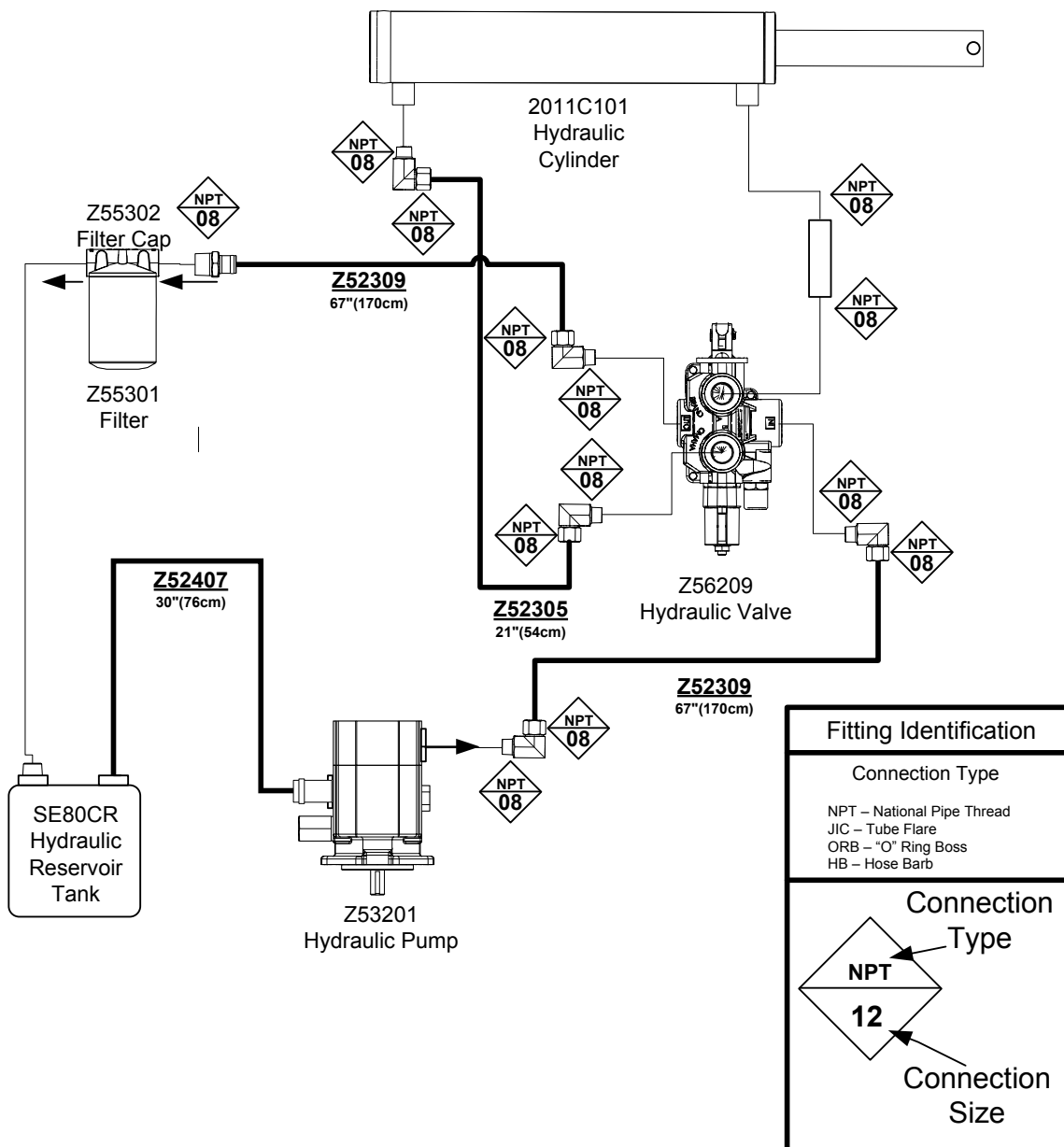


BOM ID	Description	Description	Qty
79	2011C1014	Barrel, 4"	1
80	2011C1012	Rod, 1-1/2 x 1	1
81	G400-150S	4" X 1-1/2" GLAND	1
82	P100-400SP	4" BORE PISTON	1
83	Z72292G8	Hex Lock Nut 1NF Grade 8	1
84	SLK-4015	Seal Kit, 4 x 1-1/2	1

Hydraulic Hose List

Part Number	Description	Qty
Z52309	1/2" Hose, MP08 x MP08 x 67"	2
Z52305	1/2" Hose, MP08 x MP08 x 21"	1
Z52407	1" Suction Hose x 30"	1

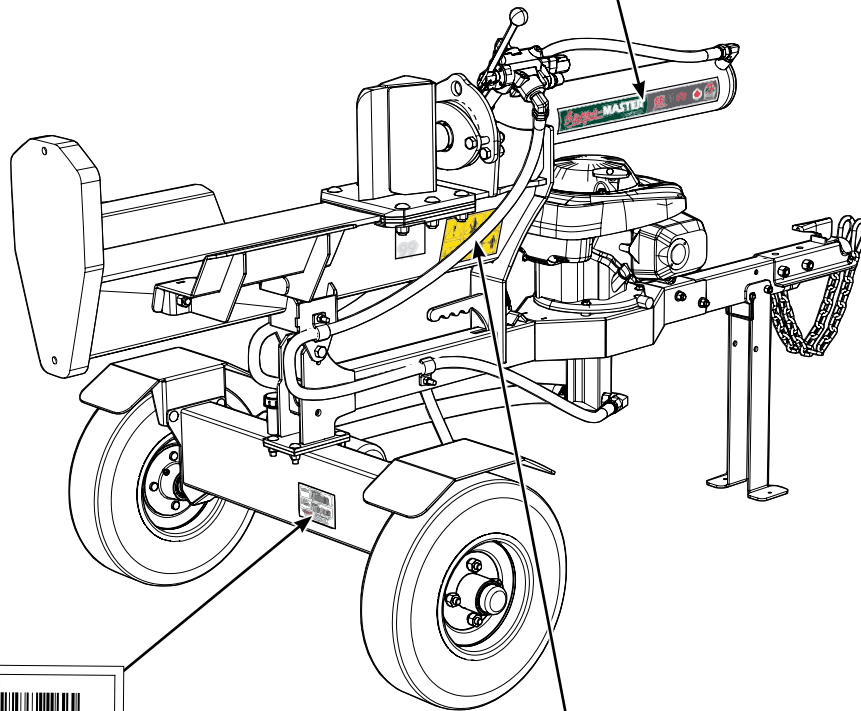
Hydraulic Schematic





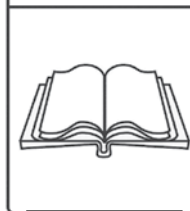
Label Layout



Z94708 x 2



MODEL: #####

 SERIAL NUMBER: #####

Serial Plate

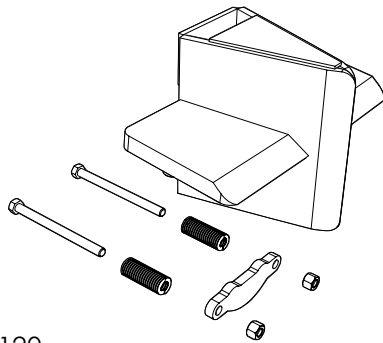


Z94119 x 2

Z94124 x 2

Z94123 x 2

Accessories



#4120

#4120 - 4 WAY WEDGE

Boost your productivity and make quick work out of logs by splitting four pieces at once. This is an ideal way to save time.



#Z97083 SE80CR TRAILER WOOD SPLITTER OPERATOR'S MANUAL

Available as a download at
www.surgemaster.com